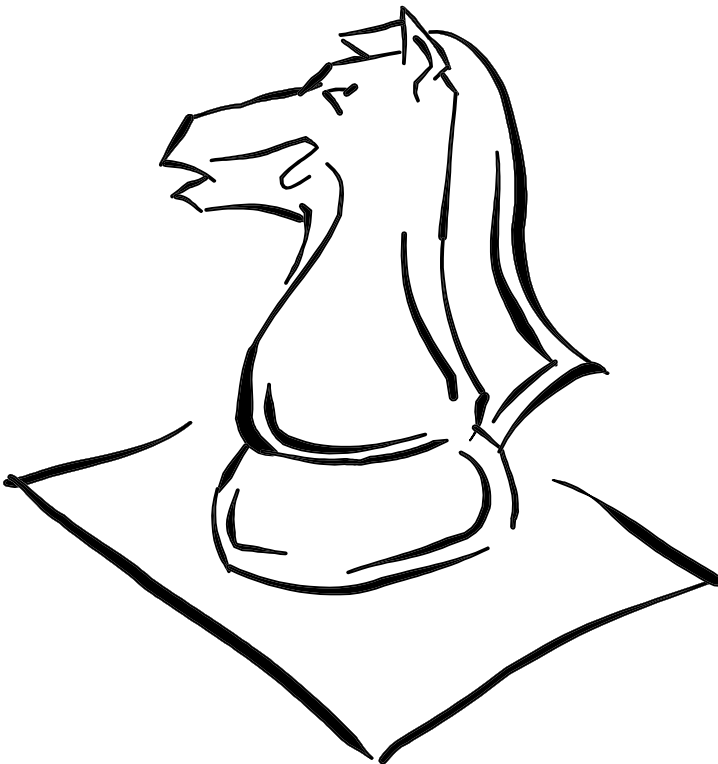


Palmetto Chess

Published by the South Carolina Chess Association

SUMMER 1996



Volume 31, Number 2

TABLE OF CONTENTS

The President's Page.....	3
Chess Expo 1995	4
Chess in the Next Millennium	5
Tournament News.....	7
South Carolina Games	9
Early SC Chess Champions	12
Inside the Rules.....	13
Crosstables	15
Upcoming Tournaments.....	25

A NOTE FROM THE EDITORS

We still welcome articles. If you always wanted to put in your two cents worth, we will print almost anything that is chess related and not in poor taste. We also welcome your games, annotated or not.


THE PRESIDENT'S PAGE

by John McCrary, SCCA President

I hope you enjoy my satire, *fused to remove* the rule “Chess in the next millen- against non-competitive nium” that is found in this draws. Furthermore, two issue. The frightening of the board members with thing is that it’s not that whom I talked expressed inconceivable! We need to an interest in *strengthening* take a good look at modern sanctions to stop what they trends and where they are agreed were unethical taking us. Common sense practices in this respect. still tells us

that a draw in zero games is not a game, but there are a few among us

who are prepared to fight for the “principle” that they have the right to draw at will without bothering to play. If that “principle” were ever fully established, tournament chess could be headed toward extinction; it is only the many ethical players, who would never do such a thing, who keep us going. The positive thing is that the USCF Policy Board in February re-



“We need to take a good look at modern trends and where they are taking us.”

The other part of my satire dealt with the world championship schism gone wild.

Consider the current reality:

the FIDE match between Karpov and Kamsky has been scheduled to occur in Baghdad, with Saddam Hussein seriously planning to move the first pawn!

The fact that Kamsky faces severe legal penalties if he goes does not seem to concern the new FIDE president, who seems determined to make his predecessor, Campomanes, look

(President continued on page 23)

Chess Expo 1995!!

*On the Grounds of the Mills House/Hampton House Complex
Columbia, SC October 28 & 29, 1995*

By Bill Floyd



very special event for Columbia Chess was held on October 28 & 29 on the Grounds of the Mills House/Hampton House Complex. As a part of Oktoberfest, we were provided with a large tent right in the center of the event where we held various activities continuously during the two days. We had seating capacity for 36 and over 200 people came by and played a game or two with our members. Over a dozen club members and South Carolina players came out to help, including Brent Bovay and John Dusky from Charleston.

The premier event was a tournament for chess newcomers, which was won by Jim Ferguson of Columbia with a score of 3 1/2. Tied for second with 3 were David Biggs of Greenville and Steven Gibson of Columbia. We had eleven players in all. A crosstable is on page 15.

This wasn't nearly as formal a process as when we run a USCF rated event. But the seven participants that finished the event seemed to thoroughly enjoy it and several have been to the club more than once since the event.


We have been invited back next year and will really work on our schedule of events with a year for planning. This year, we had just over a month and really had little idea what type of space we would have. Now that we know, we can really do some promotion there.

We will have three events for experienced players this time also: a handicap (see last issue for rules and description of

(Chess expo continued on page 18)

CHESS IN THE NEXT MILLENNIUM

By John McCrary

he year is 2038. The world's last surviving chess historian, John McCrary, has just been brought back to consciousness after a 40-year coma. After meeting his great grand-children, the 90-year old Rip Van Winkle figure has started to ask questions about modern chess. Chess Life gave live coverage of his awakening.

CL: It must be exciting to you to wake up after 40 years! A lot has happened in the chess world since you were hit by that truck in 1998.

JM: Yes, but I bet the basic game has not changed. Who is world champion now?

CL: The world champion? Oh yes, you are from the days when there was only one. Now there are 212 world champions recognized by 47 different world organizations.

JM: Did you say 212 world champions? How in the ...?

CL: Well, most of the 47 organizations have various categories, such as the G/5 world champ, the G/15 titlelist, the G/28 champ, etc. Then there are the correspondence champions, who play at the incredibly slow rate of G/90.

JM: "Correspondence chess," with a time limit

(Next continued on page 6)

(Next continued from page 5)

of 90 minutes for the game?

CL: Yes, by e-mail. The regular postal service was abolished in 2030, when they could no longer guarantee cross-town delivery in less than 21 days. Now, everyone communicates electronically.

JM: But if all the games, even “correspondence chess,” are played with fast time limits, what about the quality and soundness of play?

CL: Boy, you are old-fashioned! The PCA back in the 1990’s established the idea that chess can appeal to the mass media only as a fast-paced sport, like hockey. Slow time limits just do not cut it. The old idea of chess as art was completely sacrificed to that of chess as sport long ago.

JM: Okay, what about these 47 different world organizations? What happened to FIDE?

CL: Well, there were two pivotal events in the 1990’s that led to this proliferation of organizations. First, Kasparov in 1993 established the principle that a world champion can take his title and break away to form his own organization. Thus, any of our 212 world champions can, if he wishes, form a new association; even if he and his mother are the only members, his world title remains valid. The second pivotal event occurred in 1998, when Fide split into two because its member could not agree on a single dictator, I mean president. But then the two new organizations split again for the same reason, and then again. Then, some

(Next continued on page 21)

TOURNAMENT NEWS

The 1996 South Carolina Scholastic Championships

By John McCrary

The high school co-champions for South Carolina are Brent Bovay and Derek Gamble. Both finished with 5-0 scores in the field of 55 high school players. Bovay then won the rapid playoff game to gain an expense paid trip to the Denker tournament of high school champions in August in Alexandria, Virginia. The Governor's School for Science and Mathematics took the plaque for the best school team. Michael Robbins won the state middle-school championship with a 3-1 score.

The event was once again held at the popular site of Airport High School in Columbia. Airport coach Kurt Landrum made the arrangements for use of the spacious student center, with moveable tables, vending machines, and all the comforts a tournament could require, in a quiet, isolated setting. Scores of 4-1 were achieved by Paul Potylicki, Paul Brannon, Kevin Bathurst, Maurice Watkins, and Angel Serrano.

It is always a source of pride for me to see the development of scholastic

(Scholastic continued on page 8)

HYDER WINS 1995 SCCA POSTAL CHAMPIONSHIP

BY BILL FLOYD

**MANY TIME OTB
CHAMPION LEE
HYDER WAS THE
WINNER IN A
CLOSELY
CONTESTED 10
ROUND STATE
POSTAL
CHAMPIONSHIP.**

**BRENT BOVAY
WAS A HALF
POINT BEHIND
HYDER.**

**PAT HART
DIRECTED THE
EVENT.**



(Scholastic continued from page 7)
 chess in our state. The standard of play is higher each year, while the standards of behavior remain totally at the level of gentlemen and ladies. There are some adults in our state who would find our scholastic players useful role models in mature conduct, gentlemanly play, always doing one's best, (no grandmaster draws"), and accepting the outcome gracefully!

Good luck to Brent at the Denker Tournament!

Following are the high school players scoring at least .500 in the event:

- At 5-0: Brent Bovay, Low Country Academy; Derek Gamble, Sumter High.
- At 4-1: Kevin Bathurst, GSSM; Alexey Boldyshev, Academic Magnet; Paul Brannon, Academic Magnet; Paul Potylicki, Lexington High; Angel Serrano, Dreher High; Maurice Watkins, GSSM.
- At 3.5: David Chandler, GSSM; Billy Dewar, Dreher High; Jason Griffith, Saluda High; Victor Li, GSSM; James Smith, Greenville High.
- At 3-2: Clarence Alston, Dreher High; David Biggs, Eastside High; Blake Crosby, GSSM; Tripp Davidson, GSSM; Samuel Jackson, Sumter High; Matthew Malchano, GSSM; Michael Mallin, Dreher High; Buddy Martell, Saluda High; Matt Michano, GSSM; Jason Nease, Hilton Head; Wenjin Wang, Academic Magnet.
- At 2.5: Marshall Bowles, GSSM; Michael Fink, Sumter High; Stefan Gradinaru, GSSM; David Lai, Airport High; Kevin McDunn, Greenville High; Paul Sandefur, Middleton High.

SOUTH CAROLINA GAMES

Mark Brodie v Ross Colby

Midlands Open

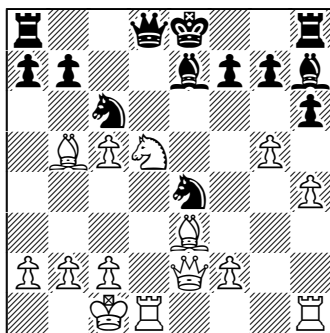
Caro Kann Advance B12

April 21, 1996

Annotated by Mark Brodie

1. e4 c6 2. d4 d5 3. e5 ♘f5
4. ♖c3 e6 5. g4 ♙g6 6. ♖
ge2 c5 7. h4 h6 8. ♙e3 ♖c6
9. dxc5 ♖xe5 10. ♖f4 ♙h7
(Kaprov felt it necessary to
play 10...a6) 11. ♙b5+ ♖c6
12. ♙e2 ♖f6 13. 0-0-0 ♙e7
14. g5 ♖e4 15. ♖fxd5!! exd5
16. ♖xd5

Position after 16. ♖xd5.



♙a5 (16...0-0!? 17. ♖f6 ♙f6
18. ♙d8 ♙d8 19. gh6 ♖) 17.
♙b1! ♖f8 (17...a6 18. ♙c6
bc6 19. ♖e7 ♖c3 20. bc3
♙b8 21. ♖c1 ♙a2 g6±) 18.
gxh6 g6 19. ♙xc6 bxc6
20. ♖xe7 (20...♙b8 21.
♙d4 ♖c3 22. ♙c3 ♙c3 23.

♙d8 +-) ♖c3+ 21. bxc3
♙b8+ 22. ♖c1 ♙a3+ 23.
♖d2 ♙d8+ 24. ♙d4 ♙xc5
25. ♖e1 ♙xd4 26. ♙xd4
♙xe7 27. ♙xe7+ ♖xe7 28.
♙a4 ♖f6 29. ♙xa7 ♙e8+ 30.
♖d2 ♙d8+ 31. ♖e3 ♙e8+
32. ♖d2 ♙e5 33. ♙g1 ♙f5
34. ♖e3 ♙c5 35. ♖d4 ♙d5+
36. ♖c4 ♙f5 37. ♙g4 ♙xf2
38. ♙c7 ♖f5 39. ♙xf7+
♖xg4 40. ♙xf2 ♖xh4 41.
♖c5 g5 42. ♖xc6 g4 43. ♙f7
♙e4+ 44. ♖d6 ♙g6 45. ♙g7
1-0.

It is with great pleasure that
we present the following fine
game by Cliff “Clubber”
Hyatt, who only recently re-
turned to tournament play.
Welcome back Cliff!!!

Cliff Hyatt v. T. Makarome

Midlands Open

Orangutan Opening

April 21, 1996

Annotated by Henry J. White

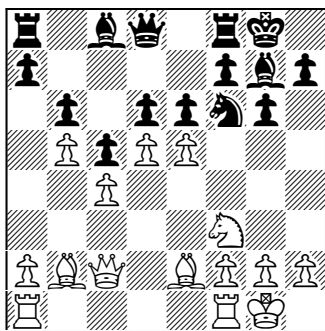
1. b4 (The Orangutan. It
dates back to the 19th cen-
tury and has been played
by the likes of Tartakover
and Pachman. Like most
irregular openings, the
Orangutan is double-
edged. On the one hand, it
starts play on a wing while
neglecting the center. On
the other, the queenside
fianchetto can be pro-

(SC games continued on page 10)

(SC games continued from page 9)
 mosing, and the b pawn does hamper black's queenside development.)
 d6 (Pachman advocated 1... a5, followed by f6 , d6, and the fianchetto of the king bishop. Also playable is 1...c6, 1...d5 or 1...e5.)
 2. a2 f6 3. e3 g6 4. a2 g7 5. f3 0-0 6. 0-0 b6 7. d4 a7 8. c4 bd7 9. bd2 c5 10. b5 e4 11. xe4 xe4 12. d2 b7 13. d5 f6 14. c2 c8 15. e4 e6 (e5 may have been better) 16. e5! (As Cliff would

often say, "Keeps the pot boiling.").

Position after 16. e5!



16... g4 17. exd6 axb2
 18. xb2 xd6 19. a4
 e5? (The pawn cannot be held on e5. Slightly better is 19... exd5 , but then white could develop pernicious activity in the e and d files with his rooks and queen.) 20. h3 (Puts the question to the bishop.) d

f6 21. xe5 (xe5 may be safer) xe5 22. xe5 e4
 (Better is e8 , then 23.f4 g5 24. d3 gxf4 25. xf4 xe5 26. xf6) 23. f3 c3
 (The knight heads into no man's land from which it will not return.) 24. d2 b7 25. c1 f6 26. c6 xc6 27. dxc6 (Better to capture toward the center with bxc6 .) xb5 28. cxb5 a6 29. c7 a7 30. d7 axb5 31. c8= q xc8 32. xa7 b4 33. b7 1-0.

M. Morris v Brent Bovay

Snowstorm

Sicilian Defense

February 27, 1996

1. e4 c5 2. f3 d6 3. d4 cxd4 4. xd4 f6 5. c3 a6 6. f4 c7 7. f3 c6 8. d3 e6 9. 0-0 e7 10. e1 0-0 11. h1 b5 12. e5 dxe 13. fxe $\text{d5}?$! 14. $\text{e4}!$ f5 15. xd5 fxe 16. xc7 a7 17. xb5 axb 18. xe4 xe5 19. e3 a4 20. d3 xd3 21. cxd f6 22. d4 b7 23. b3 a6 24. e5 xe5 25. xf8 xf8 26. dxe d5 27. f1 e8 28. a4 1/2-1/2.

J. Valentine v. B. Bovay

(SC games continued from page 10)

Snowstorm
Sicilian Defense
February 27, 1996

1. e4 c5 2. ♖f3 d6 3. d4
cxd4 4. ♜xd4 ♜f6 5. ♜c3 a6
6. ♜g5 e6 7. f4 ♜e7 8. ♜f3
♜c7 9. 0-0-0 ♜bd7 10. ♜d3
b5 11. ♜he1 ♜b7 12. h3
♜ac8 13. ♜b1 ♜c5 14. a3
♜b6 15. ♜e3 b4 16. axb
♜xb4 17. e5 dxe 18. fxe5
♜d5 19. ♜xd5 ♜xd5 20.
♜xe7 ♜xe7 21. ♜g5+ ♜f8
22. c3 ♜a4 23. c4 ♜xd3 24.
♜xd3 ♜xc4 25. ♜c3 ♜a2+
26. ♜c2 ♜xc3+ 27. ♜xc3
♜c4+ 28. ♜d2 ♜xd4+ 29.
♜c1 ♜c4+ 30. ♜d1 ♜d3+
31. ♜c1 ♜b3 32. ♜d2 ♜xd2
33. ♜xd2 ♜e7 34. ♜c1 ♜d8
35. ♜e3 ♜d5 36. g4 ♜d7 37.
♜f1 ♜e7 38. ♜c1 f6 39. ♜c7
♜d7 40. exf gxf 41. ♜c8
♜f7 42. h4 ♜b7 43. ♜c2 e5
44. ♜d2 ♜b3+ 45. ♜f2 ♜e6
46. g5 f5 47. ♜e1 d5 48. h5
♜h3 49. g6 hxg6 50. hxg6
♜xg6 51. ♜d6 ♜f6 52. ♜xa6
♜e5 53. b4 ♜c4 54. ♜a5
♜f4 55. b5 e3 0-1.

Will Smith v Brent Bovay
Midlands Open
Sicilian Defense
April 21, 1996

1. e4 c5 2. ♖f3 d6 3. ♜c3 e6
4. d4 cxd4 5. ♜xd4 a6 6. a4
♜f6 7. ♜e2 ♜e7 8. 0-0 0-0
9. f4 ♜c7 10. ♜e3 ♜bd7 11.

g4 ♜c5 12. ♜f3 ♜b8 13. g5
♜e8? (♜d7) 14. h4 b6 15. h5
♜b7 16. b4 ♜d7? (♜b3) 17.
♜d3 ♜c8 18. ♜d2 ♜c4 19.
♜e3 g6?? 20. ♜e2 ♜c7 21.
hxg hxg 22. ♜f2! ♜g7 23.
♜h1 ♜g8 24. ♜g4 e5 25.
♜e6+ fxe6 26. ♜xe6 ♜ef6
27. gxf6 ♜xf6 28. ♜ag1 ♜f8
29. fxe dxe 30. ♜h6 ♜e8 31.
♜xg6 ♜f8 32. ♜e1 ♜xe4 33.
♜h5 ♜d8 34. ♜h3 ♜xd2 35.
♜d3 ♜d6 36. ♜xd2 ♜e4??
37. ♜h4+ ♜e8 38. ♜xe4
♜d8 39. ♜d5 ♜f2+ 40. ♜e1
♜xc2 41. ♜g8+ 1-0.

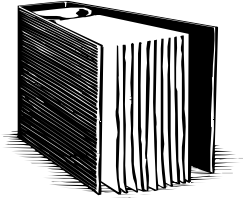
R. Scruggs v T. Trower
Midlands Open
April 20, 1996

1. d4 ♜f6 2. ♜f3 d5 3. g3 e6
4. ♜g2 c6 5. 0-0 ♜bd7 6.
♜bd2 ♜d6 7. c4 0-0 8. c5
♜c7 9. b4 a5 10. bxa5 ♜xa5
11. ♜b3 ♜a8 12. ♜c2 e5 13.
dxe5 ♜xe5 14. ♜xe5 ♜xe5
15. ♜b2 ♜e7 16. e3 ♜xb2
17. ♜xb2 ♜d7 18. ♜ac1 ♜e5
19. ♜fd1 ♜g4 20. ♜d2 ♜c4
21. ♜xc4 dxc4 22. ♜d4
♜xc5 23. ♜xb7 ♜fb8 24.
♜xc6 ♜b1+ 25. ♜f1 ♜xc6
26. ♜xc6 ♜h3 0-1.

EARLY SOUTH CAROLINA CHESS CHAMPIONS

Year	Champion	Site	Champion's Home Town
1926	Dr. W. Hampton	Columbia	Spartanburg
1927	James H. Rice, Jr.	Charleston	Wiggins
1928	Col. Oliver Bond	Sumter	Charleston
1929	Benjamin Johnson	Spartanburg	Spartanburg
1930	Elmer B. Hallman	Charleston	Spartanburg
1931	Edward Dashiell	Greenville	Spartanburg
1932	P. J. Walker	Charleston	Varnville
1933	Edward Dashiell	Spartanburg	Spartanburg
1948	Harold Mouzon Jr	Columbia	Charleston
1949	Paul L. Cromelin	Spartanburg	Columbia
1950	Harold Mouzon Jr	Charleston	Charleston
1951	Paul L. Cromelin	Columbia	Columbia
1952	Alex Edelsburg	Columbia	Columbia
1953	Rea B. Hayes	Columbia	Greenville
1954	Rea B. Hayes	Columbia	Greenville
1955	Ernest C. Hoenck	Columbia	Charleston Height
1956	Lanneau L. Foster	Columbia	Columbia
(Tie)	Alex Edelsburg	Columbia	Columbia
1957	Prof. R. G. Brown	Columbia	Hartsville
1958	Prof. R. G. Brown	Columbia	Hartsville

Editors' note: This table was originally published in an article entitled *History of the SCCA* by John C. McCrary, SCCA News, Volume xix, no. 4, October 1984.



INSIDE THE RULES

By Henry J. White

WINNING ON TIME

In the third round of last year's South Carolina Open tournament in Columbia, I was on the board next to Patrick Harley, who was playing a Master. As usual, I was paying more attention to nearby games than my own. The Master was in a desperate time scramble to make the first time control (35/90), when I heard Harley exclaim "Your flag is down!" Without hesitation, the Master said, "So what, your score sheet is incomplete." I thought to myself, but you don't have to keep score if either player has less than 5 minutes on his clock. Harley kept playing and did not challenge the Master's retort. I resolved then and there to start reading the rule book, something I had never done in my 14 years of playing tournament chess.

The USCF's *Official Rules of Chess* is in its 4th edition. The rules are designed to cover "[m]ost problems concerning rules that may arise during a chess game." Rule 1A. The rules concerning time forfeiture are found in Rule 13C, which contains 15 subparts.

I was right that a player with less than 5 minutes does not have to keep score. Rule 15B. However, the Master was right about Harley's score sheet. Rule 13C provides as follows:

The game is won by the player who properly claims that the opponent has not completed the prescribed number of moves in the allotted time, provided that the claimant has a reasonably complete score sheet when the flag falls....

Proper Claim

Rule 13C requires that the time forfeit be claimed "properly." In order to properly claim a win on time, the claimant should first stop both clocks and state the claim that his opponent has lost on time. Rule 13C5. If the opponent accepts the claim, the game is

(Rules continued on page 14)

CLAIMING A WIN ON TIME



- **STOP BOTH CLOCKS.**
- **CLAIM THE WIN.**
- **CALL TD.**
- **MUST HAVE REASONABLY COMPLETE SCORE SHEET (NO MORE THAN 3 MISSING OR INCOMPLETE MOVE PAIRS).**
- **IF SCORE SHEET NOT REASONABLY COMPLETE, 2 MINUTES WILL BE ADDED TO OPPONENT'S CLOCK AND NEW TIME CONTROL BEGINS.**

(Rules continued from page 13)

over. However, if the opponent does not, the claimant must get the tournament director. Rule 13C5.

Reasonably complete scoresheet

Rule 13C7 provides that “a reasonably complete score sheet is one that has no more than three missing or incomplete move pairs (consecutive moves, white and black or black and white).” If either side’s move is omitted or incomplete, the move pair is considered incomplete. Minor ambiguities or errors involving no more than one symbol do not affect whether the score is reasonably complete. However, “[m]oves that are indecipherable or recorded only with check marks are considered missing.” Rule 13C7.

Filling in moves with flag down

After either player has pointed out a flag is down, neither player can fill in or correct any previous move missing from the score sheet. If Harley had attempted to update his score sheet after the Master’s flag had fallen, such additions or corrections would not have been considered by the tournament director for purposes of determining whether the score sheet was reasonably complete. Rule 13C3.

If Harley had improperly filled in the missing moves after the Master’s flag had fallen, he could not win by time forfeit unless the director was certain

(Rules continued on page 24)

CROSSTABLES

1995 SCCA POSTAL CHAMPIONSHIP

Player	1	2	3	4	5	6	Total
01. Brent Bovay	X/X	W/W	W/W	W/W	W/L	D/W	7.0
02. Randy Bryant	L/L	X/X	D/L	L/L	L/L	L/L	0.5
03. Bill Corbett	L/L	D/W	X/X	W/D	W/W	W/L	6.0
04. Bill Floyd	L/W	W/W	L/D	X/X	L/W	D/D	5.5
05. Jim Kellim	D/L	W/W	L/L	W/L	X/X	L/L	3.5
06. Lee Hyder	W/D	W/W	L/W	D/D	W/W	X/X	7.5

CHESS EXPO 1995 COLUMBIA OCTOBER 28-29, 1995

Player	1	2	3	4	Total
01. Billy Dewars	W4	W5	D10	L8	2.5
02. David Biggs	W3	W9	W3	L10	3.0
03. Jason Smith	L2	W6	L2	BYE	2.0
04. John Knight	L1	L8	BYE	L5	1.0
05. John Fullwood	W9	L1	L8	W4	2.0
06. Lionel Grant	L7	L3	—	—	0.0
07. Richard Prescott	W6	L10	??-9	—	1.0
08. Steven Gibson	L10	W4	W5	W1	3.0
09. Joey Piucci	L5	BYE	??-7	—	1.0
10. Jim Ferguson	W8	W7	D1	W2	3.5
11. Mark Snyder	BYE	L2	—	—	1.0

1996 SCHOLASTIC CHAMPIONSHIPS

Player	1	2	3	4	5	Total
01. Brenton L. Bovay	W27	W34	W15	W4	W3	5.0
02. Derek Gamble	W52	W43	W14	W30	W10	5.0
03. Paul R. Potylicki	W49	W38	W16	W5	L1	4.0
04. Paul W. Brannon	W55	W22	W7	L1	W19	4.0
05. Kevin M. Bathurst	W39	W23	W25	L3	W24	4.0
06. Maurice Watkins	W48	W8	W9	L10	W14	4.0
07. Angel Serrano	W18	W11	L4	W35	W26	4.0
08. Alexey Boldyshev	W12	L6	W46	W28	W15	4.0
09. Jason H. Griffith	W40	W36	L6	W18	D12	3.5
10. James M. Smith	W50	W13	D30	W6	L2	3.5
11. David L. Chandler	W44	L7	D13	W25	W31	3.5
12. Victor K. Li	L8	W39	W21	W31	D9	3.5
13. Billy Dewar	W26	L10	D11	W47	W30	3.5
14. Buddy A. Martell	W47	W41	L2	W27	L6	3.0
15. David C. Biggs	W24	W19	L1	W23	L8	3.0
16. Forrest Davidson	W53	W21	L3	L24	W39	3.0
17. Samuel T. Jackson	L23	L47	W29	W48	W41	3.0
18. Matthew Michaud	L7	W52	W20	L9	W44	3.0
19. Blake A. Crosby	W35	L15	W38	W33	L4	3.0
20. Clarence Alston	L36	W49	L18	W40	W33	3.0
21. Wenjin Wang	W33	L16	L12	W49	W32	3.0
22. Matthew Malchano	W32	L4	L27	W38	W35	3.0
23. Jason Nease	W17	L5	W32	L15	W36	3.0
24. Michael P. Mallin	L15	W37	W34	W16	L5	3.0
25. Kevin McDunn	D29	W42	L5	L11	W47	2.5
26. Marshall Bowles	L13	W40	D47	W42	L7	2.5
27. Paul A. Sandefur	L1	W51	W22	L14	D28	2.5
28. Michael D. Fink	W45	L30	W41	L8	D27	2.5
29. David R. Lai	D25	L31	L17	W50	W42	2.5
30. Stefan Gradinaru	W37	W28	D10	L2	L13	2.5
31. Jae Min Purvis	L38	W29	W50	L12	L11	2.0
32. Ronald J. Boland	L22	W55	L23	W53	L21	2.0
33. Morgan Jones	L21	W48	W43	L19	L20	2.0
34. Xevin J. Kudra	W51	L1	L24	L44	W50	2.0
35. Willie F. McLeod	L19	W53	W44	L7	L22	2.0
36. Abe J. Crystal	W20	L9	L42	W51	L23	2.0
37. Lee Horan Carter	L30	L24	L48	W52	W53	2.0
38. Luther S. Wheeler	W31	L3	L19	L22	BYE	2.0

1996 SCHOLASTIC CONTINUED

Player	1	2	3	4	5	Total
39. Scott C. Adkins	L5	L12	W52	W46	L16	2.0
40. Jonathan Stewart	L9	L26	BYE	L20	W51	2.0
41. Jonathan Gunter	BYE	L14	L28	W43	L17	2.0
42. James E. Lambert	W54	L25	W36	L26	L29	2.0
43. Justin A. Dean	W46	L2	L33	L41	W49	2.0
44. Michael D. Houser	L11	W54	L35	W34	L18	2.0
45. Caleb B. Bedford	L28	L46	L49	W55	W54	2.0
46. Kenyon R. Maree	L43	W45	L8	L39	D48	1.5
47. Rick C. Stover	L14	W17	D26	L13	L25	1.5
48. Jonathan F. Mason	L6	L33	W37	L17	D46	1.5
49. Clint McKinney	L3	L20	W45	L21	L43	1.0
50. Chad E. Bennett	L10	BYE	L31	L29	L34	1.0
51. Trah Best	L34	L27	W55	L36	L40	1.0
52. Rodger Thompson	L2	L18	L39	L37	W55	1.0
53. Jonathan Torpey	L16	L35	W54	L32	L37	1.0
54. Suzanne M. Moore	L42	L44	L53	H	L45	0.5
55. Gordon E. Rains	L4	L32	L51	L45	L52	0.0

24TH SNOWSTORM

FEBRUARY 24-25, 1996

TD - DOUGLAS HOLMES

Player	1	2	3	4	5	Total
01. Matthew Morris	W18	D11	W9	W5	W13	4.5
02. Eugene Furman	W19	W39	W8	L37	W10	4.0
03. Lindsay Blanks	L21	D30	U	U	U	0.5
04. Patrick Hart	BYE	W32	BYE	U	U	2.0
05. Rob Feldstein	D40	W20	W12	L1	W14	3.5
06. Mark Galloway	W23	D13	D11	L15	U	2.0
07. John Valentine	D24	W40	L13	W32	D19	3.0
08. John Vonderlieth	W25	W15	L2	W18	D39	3.5
09. Harry Abrams	W27	D17	L1	L19	W26	2.5
10. Claude Corbett	W28	W21	L37	W24	L2	3.0
11. William Glickman	W29	D1	D6	L13	W30	3.0
12. Norman Neel	D30	W26	L5	W17	D23	3.0
13. Brenton Bovay	W31	D6	W7	W11	L1	3.5
14. Frederick Olmsted	L32	W28	D23	W26	L5	2.5
15. Bernhard Lindner	W33	L18	W22	W6	BYE	3.5

SNOWSTORM CONTINUED

Player	1	2	3	4	5	Total
16. John Haymond	W35	L37	BYE	L23	L17	1.5
17. Charles Ammons	W36	D9	L39	L12	W16	2.5
18. William Smith	L1	W31	W25	L8	W32	3.0
19. John Rogers	L2	W29	BYE	W9	D7	3.0
20. Bryan Rounds	BYE	L5	L32	BYE	D34	1.5
21. Donald Wilson	W3	L10	L30	W27	W36	3.0
22. William Pilaud	L37	W24	L15	L36	L28	1.0
23. Alvin Veronee, Jr.	L6	W33	D14	W16	D12	3.0
24. Julian Ford	D7	W38	BYE	L10	L35	2.0
25. Albert Carlson	L8	W36	L18	L35	W29	2.0
26. Jackson Kammerer	BYE	L12	WF	L14	L9	1.5
27. John Roberts	L9	W35	BYE	L21	U	1.5
28. James Walys	L10	L14	L36	L29	W22	1.0
29. Frank Abbott	L11	L19	L35	W28	L25	1.0
30. Tony Makarome	D12	D3	W21	L39	L11	2.0
31. Ken Crane	L13	L18	L34	U	U	0.0
32. John Loy	W14	L4	W20	L7	L18	2.0
33. Kenton Payne	L15	L23	LF	U	U	0.0
34. John Cross	L39	L22	W31	BYE	D20	2.0
35. Casey Phipps	L16	L27	W29	W25	W24	3.0
36. Clyde Baker	L17	L25	W28	W22	L21	2.0
37. Douglas Holmes	W22	W16	W10	W2	BYE	4.5
38. Kyle Oody	BYE	L24	U	U	U	0.5
39. David O'Bryant	W24	L2	W17	W30	D8	3.5
40. Michael Will	D5	L7	BYE	U	U	1.0

(Chess expo continued from page 4)

the “Floyd System”), a game/15 and a speed chess event. Times will be announced as soon as we get the schedule for the event, but count on an event at 11:00 am Saturday, one at

3:00 pm Saturday and one at 11:00 am Sunday near the end of October. We will have our event for newcomers at 2:00 pm Sunday. Only the game 15 will be rated and that will be

1996 MIDLANDS OPEN

APRIL 20-21, 1996

TD - BILL FLOYD

Player	1	2	3	4	5	Total
01. Daniel Liu	W12	W5	D6	W15	W2	4.5
02. Jack J. Berry	W23	W17	W9	W3	L1	4.0
03. Mark D. Brodie	W28	W10	W11	L2	W6	4.0
04. Todd Trower	W20	L11	W12	W22	W10	4.0
05. Patrick Harley	W30	L1	W23	W11	W16	4.0
06. Ross D. Colby	W22	W7	D1	W9	L3	3.5
07. William O. Smith	W33	L6	D19	W20	W15	3.5
08. Robert Osborne	W27	W16	L10	W19	W17	3.5
09. Harry Lee Abrams	W18	W21	L2	L6	W22	3.0
10. Richard Scruggs	W14	L3	W8	W13	L4	3.0
11. Mario Mercado	W31	W5	L3	L5	W18	3.0
12. Randall L. Altman	L1	W30	L4	W32	W24	3.0
13. Frank Abbott	W29	L15	W21	L10	W23	3.0
14. Paul Webb	L10	L23	W21	W24	BYE	3.0
15. Brenton L. Bovay	D19	W13	W16	L1	L7	2.5
16. Norman L. Neel	W25	D8	L15	W27	L5	2.5
17. James C. Hyatt	W26	L2	BYE	W28	L8	2.5
18. John G. Roberts	L9	W31	W24	BYE	L11	2.5
19. John Matthew Loy	D15	D24	D7	L8	W27	2.5
20. Justin Robason	L4	D29	W25	L7	W30	2.5
21. Charles F. Ammons	W32	L9	L13	W30	U	2.0
22. Anthony J. Brown	L6	W33	W26	L4	L9	2.0
23. Bruce C. Baker	L2	W14	L5	W26	L13	2.0
24. Robert Woodard	BYE	D19	L18	W14	L12	2.0
25. Nathan Barber	L16	L27	L20	W29	W32	2.0
26. Nick Loring	L17	BYE	L22	L23	W31	2.0
27. Jody Lipford	L8	W25	W29	L16	L19	2.0
28. Tony K. Makarome	L3	W32	BYE	L17	U	1.5
29. Michael Lafer	L13	D20	L27	L25	W33	1.5
30. William East	L5	L12	BYE	L21	L20	1.0
31. Bennie Cohen	L11	L18	L14	W33	L26	1.0
32. Chris Stonestreet	L21	L18	W33	L12	L25	1.0
33. Edmond Browning	L7	L22	L32	L31	L29	0.0

GREENVILLE COUNTY SWISS

MAY 5, 1996

TD - NORBERT C. THIEMANN

ASST. TD - BILL CORBETT

Player	1	2	3	Total
--------	---	---	---	-------

OPEN

01. Randal Ferguson	W7	W4	W3	3.0
02. Wayne Williams	D10	W13	W5	2.5
03. Ellis Jones	W6	W11	L1	2.0
04. David Garvey	W14	L1	W11	2.0
05. Brent Bovay	W12	W9	L2	2.0
06. Clark Barthel	L3	W15	W10	2.0
07. John Dusky	L1	D10	W13	1.5
08. Frederic Olmstead	L9	W12	H	1.5
09. Gary D. Newsom	W8	L5	U	1.0
10. Michael Landau	D2	D7	L6	1.0
11. Bill Floyd	W13	L3	L4	1.0
12. John Ringwood	L5	L8	H	0.5
13. Claude Corbett	L11	L2	L7	0.0
14. Dennis Chipman	L4	U	U	0.0
15. Albert Stasik	U	L6	U	0.0

UNDER 1600

01. Michael Smith	W22	W7	W6	3.0
02. John Rogers	W16	D9	W13	2.5
03. Brian Hastings	W17	W11	D4	2.5
04. Kenneth Pestka	X	W12	D3	2.5
05. Leroy Dillard	D14	W16	D9	2.0
06. Chris Jones	W18	W10	L1	2.0
07. Ronald E. Gaskins	W23	L1	W14	2.0
08. Jackson Kammerer	W19	L13	X	2.0
09. John Roberts	W25	D2	D5	2.0
10. Robert Anderson	W20	L6	W19	2.0
11. Stephen Reneke	W26	L3	W20	2.0
12. Joseph H. Feiler	W15	L4	W22	2.0
13. Kevin McDunn	W21	W8	L2	2.0
14. David Biggs	D5	W18	L7	1.5

GREENVILLE COUNTY SWISS CONTINUED

Player	1	2	3	Total
15. Lucas Johns	L12	D23	W25	1.5
16. Robert Gatton	L2	L5	BYE	1.0
17. Albert Stasik	L3	BYE	F	1.0
18. Charles Mayes	L6	L14	W23	1.0
19. Eric Hutchins	L8	W26	L10	1.0
20. Bennie Cohen	L10	W21	L11	1.0
21. Curtis Mills	L13	L20	W26	1.0
22. Britt Tulbet	L1	W25	L12	1.0
23. Chris Stonestreet	L7	D15	L18	0.5
24. Jeff Smith	F	U	U	0.0
25. Edmond Browning	L9	L22	L15	0.0
26. Greg Painter	L11	L19	L21	0.0

(Next continued from page 6)

of the world champions broke away from those organizations to form new groups. Thanks to the inflexible politicians and the break-away champions, we now have 47 world organizations. There is every hope that we will soon have more organizations and even more championships!

JM: Uh, nurse, I think I will skip supper tonight. How do you keep up with all these world champions? In my day, we had whole biographies devoted to them; that must be rather tricky these days.

CL: Well, it is not easy, since most of the titles are based on tournaments held monthly, on the one-game knockout system started by FIDE just before their big split. So, the champions change fairly often. But

(Next continued on page 22)

(Next continued from page 21)

we manage to get them all in our yearbook issue. There is a new book coming out, about the size of THE BASEBALL ENCYCLOPEDIA, which will contain a paragraph on each champion. That beats any biography based on just one champion!

JM: Moving right along, what about opening theory these days? I bet computers have had a big impact in this area.

CL: Well, the Ruy Lopez has been analyzed right through to the king-and-pawn ending, but that opening is rarely played. Nowadays, the Karpov gambit is favored. That is the opening based on Karpov's famous draw versus Leko in the mid-1990s, when the moves were 1. d4, draw agreed! That game revolutionized opening theory, spawning a host of imitations. Soon there were spin-off openings such as 1. Nf3, draw agreed, and 1. e4, draw agreed. Whole books were devoted to these systems, focusing mainly on the negotiation skills required before the games. Now we have a whole new set of openings, based on a major variation of the Karpov gambit. The basic moves of this new system are 1.d4, resigns! That system is irrefutable when played between friends under certain conditions.

JM: How do other sports regard these one-move "games"? No other sport has non-competitive contests!

CL: Other sports borrowed the idea from chess. The last Super Bowl had the teams agreeing to a tie right after the coin toss. Think of the suspense for the

(Next continued on page 23)

(President continued from page 3)

good! Furthermore, the new FIDE president plans to scrap the time honored world championship match system in favor of a knockout tournament of two-game matches held annually. Both Kasparov and Karpov have refused to consider playing in that event, which Karpov calls a “farce.” So how many champions will we wind up with then!

One last thing: the motto “gens una sumus” (we are one people) applies to all of us in this state. Shame to

(Next continued from page 22)

spectators. They drive hundreds of miles, never knowing whether the game will be played or not!

JM: Actually, that may have been more suspenseful than many of the Super Bowls in my day, now that I think of it. But I have one more question. You called me the last surviving chess historian. How can that be?

CL: Well, in this fast-paced world, no one has time to worry about traditions and “heritage.” So, the study of history essentially disappeared. They don’t even teach it in schools anymore. Say I’ve got to run. Do you have any more questions?

(Rules continued from page 14)

that Harley's time sheet would have been sufficient to win on time without the improper additions. Rule 13C4. If the director were unsure about the sufficiency of Harley's score without the improper additions, then he would have to give the benefit of the doubt to the Master and deny Harley's claim. Rule 13C4.

Pursuant to Rule 13C2, the Master could have called attention to his own flag before Harley did. This would have instituted the time forfeiture procedure and thereby prevented Harley from updating his score sheet.

Effect of improper claim

If Harley had stopped the clocks, claimed the win on time, but the tournament director concluded that his time sheet was not reasonably complete, then two minutes would have been added to the Master's clock and the game would have continued. Rule 13C11. Moreover, the next time control (G/60) would have then been in effect. Rule 13C11.

Both flags down

When Harley claimed the win on time, he did not stop the clocks as he should have. If his flag had fallen while waiting for the tournament director, his claim would have been void. Rule 13C6. That's why it is important to stop the clocks and then claim the win on time. If both flags fall, neither player can claim a win on time. If both fall during a sudden death time control, the game is drawn. Rules 14G and 16T. "A score sheet is not required to win on time in a sudden death control." Rule 15C.

Happy ending

Harley went on to beat the Master the old fashioned way: he forced him to resign!!

'96 SC OPEN

July 13th & 14th

SITE: Comfort Inn, 412 Mauldin Road / Exit 46 I-85,
Greenville, South Carolina. 864-277-6730.

ENTRY FEE: \$30 if received by July 11th: \$35 at site.

SCCA membership required, \$8 OSA.

PRIZES: \$700 guaranteed based on 40 players (excludes
“Scholastics U1400 K-12” option). \$250 - 1st: \$150 - 2d
(b/40). \$75 each for Classes A, B, C, & U1400. UNRated
based on performance rating.

TIME LIMIT: Game 100 (round 1 only): 35/90; SD/60
(rounds 2-5).

ROUNDS: **7/13/96** 9:30 - 1:30 - 7:30 **7/14/96** 9:30 - 3:30

REGISTRATION: 8:00 - 9:15am.

ENTER: Bill Corbett 400 Southerlin Road, Taylors, South
Carolina 864-895-2691. All checks payable to the
“Greenville Chess Club.”

MOTEL: Same as tournament site. Chess rate \$45 (1-2) +
\$5 for each additional person (mention SC Open/Chess).

**1/2 pint byes available for all rounds if requested before the 1st round begins.
Limit one bye per player.**

**Scholastics U1400 (K-12) may play for point prizes @ EF: \$5.00. Not eligible
for regular tournament or class prizes. Not part of b/40 prize guarantee.
Points and prizes are as follows: 2.0/\$10; 2.5/\$15; 3.0/\$20; 3.5/\$25; 4.0/\$30;
4.5/\$35; 5.0/\$40.**

NS NC W

ROCK HILL OPEN

August 3, 1996

4 ROUND SWISS

TIME CONTROL: G/60

SITE: Hampton Inn, I-77 Dave Lyle Blvd. (Exit 79),
Rock Hill, South Carolina.

ENTRY FEE: \$18 by 7/29/96, \$21 at site.

PRIZES: \$(b/36 entries): 50-25 each section, more
per entries.

REGISTRATION: 8:30 - 9:15 am.

ROUNDS: 9:30 - 12:30 - 2:45 - 5:00.

HOTEL RATE: \$55, 803-325-1100

ENTER: Pete Danker, 7119 Ridgewood Road, Fort
Mill, South Carolina 29715. 803-548-0955.

NS NC W

CHARLESTON CLASSIC XVI

August 24-25, 1996

SITE: Trident Technical College, Building 300, 7000 Rivers Avenue (Highway 52), North Charleston, South Carolina.

ENTRY FEE: \$30 by 8/21/96; \$35 at site; School (K-12) \$5.

USCF membership required.

PRIZES: \$900 (Guaranteed): 1st - \$180; 2nd - \$120; A-B-C-U1400 each \$100-50; USCF (only) to Top School entry; UNRated based on performance rating after round 4.

TIME LIMIT: Game 100 (round 1 only): 35/90; SD/60 (rounds 2-5).

ROUNDS: 10-2-7; 10-2:30.

ENTER: Charleston Chess Club, P.O. Box 634, Sullivan's Island, South Carolina 29482-0634 (803) 883-3783 (after 1 pm). Information also via Internet: "path@awod.com".

REGISTRATION: 9:00 - 9:55 am.

MOTELS: Knights Inn (803-744-4900 / 800-845-1927) \$27-\$31; Masters Economy Inn (803-744-3530 / 800-633-3434) \$32-\$39; Budget Inn (803-747-7691) \$32; (Prices subject to change).

Palmetto Chess is published quarterly by the South Carolina Chess Association, a non-profit membership organization that organizes and promotes chess competition in South Carolina. It is the official United States Chess Federation state affiliate chapter for South Carolina.

Membership is \$8 per year, or \$3 for juniors under age 19.

Officers of the South Carolina Chess Association are:

President- John McCrary, 564 Rainbow Circle, West Columbia 29070

Vice President- M. Lee Hyder, 33 Longwood Dr., Aiken 29803 E-mail m.hyder@genie.geis.com

Secretary- Bill Willard, 506 West North 4th Street, Seneca 29678

Treasurer- Pat Hart, PO Box 634, Sullivan's Island 29482 E-mail path@awod.com

Palmetto Chess is edited by:

Bill Floyd, 4315 Devereaux Road, Columbia 29205, and

Henry J. White, 320 Whitehurst Way, Columbia 29223 E-mail d4Nf6@aol.com

**Palmetto Chess
4315 Devereaux Road
Columbia, SC 29205**