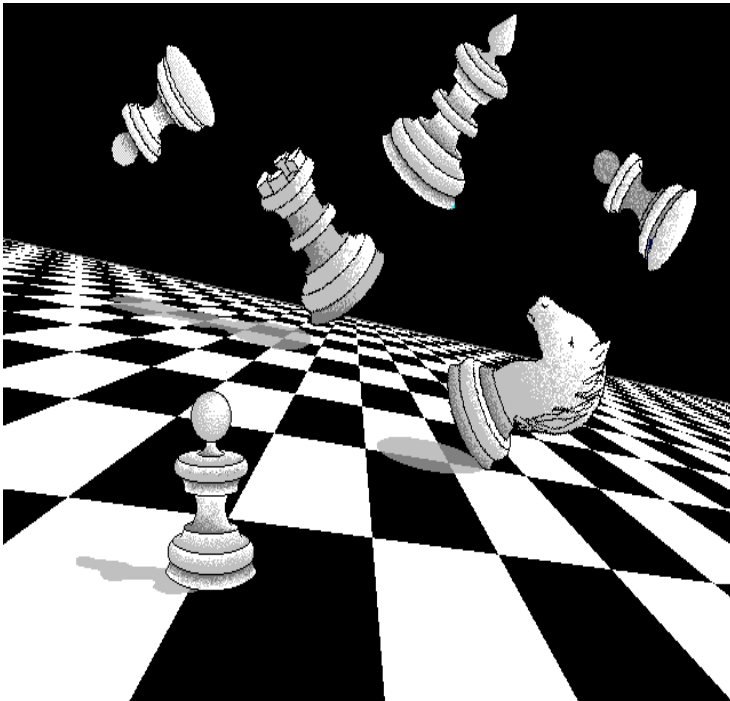


Palmetto Chess

Published by the South Carolina Chess Association

April 1997



Volume 32, Number 2

TABLE OF CONTENTS

The President's Page.....	3
Play Your Own Opening.....	4
Kasparov v Deeper Blue	7
SCCA Spotlight	8
From the Editor's Desk.....	11
South Carolina Games	12
Real World Champion?	15
Tournament News.....	16
Local Chess Clubs.....	18
Inside the Rules.....	20
SCCA Meeting Minutes.....	22
Crosstables	24
Upcoming Tournaments.....	29

EDITOR'S NOTE

Palmetto Chess very much welcomes letters, articles, game scores, artwork and any suggestions or comments you have regarding the marvelous game of chess.

The President's Page

By John McCrary

SCCA President

I am always impressed by the way in which our state maintains its standards of conduct, unlike so much of the chess world. Our players continue to play their best, without the grandmaster draws and sandbagging practices found many other places. We are maintaining our standards on our internet web sites as well. By contrast, some of the national web sites that feature chess political discussions are hotbeds of vulgar personal attacks and factless speculation. It seems that the internet, much like television, is a case of technology progressing more rap-

idly than our society has the wisdom to use. Think of the millions of dollars spent on television, only to broadcast *Roseanne* or the like. Similarly, one can use sophisticated

electronic technology, only to tune in to some mindless, unsophisticated gossip on the "net."

By contrast, the

USCF web site at www.uschess.org has contained candid, useful and accurate information about the governance of the USCF and its problems. A visit to that site, which contains much other information as well, is definitely recom-

"Unlike the USCF, we have balanced our budget, and unlike FIDE, we have maintained the integrity of our state championships!"

(President continued on page 27)

Play Your Own Opening!

Part II

By Lee Hyder



As a young player in Texas, I came to know Louis Dina, the Champion of Fort Worth. Dina was a strong expert who enjoyed playing unusual openings, one of which was the Marshall Gambit in the Center Counter Defense. One day he showed me how to play it, and some time later I got up the nerve to try it in a game. The result was favorable, and this opening became my mainstay for some years, and then—let me tell you the story.

The Marshall Gambit (I'm sure you know this) starts 1 e4 d5 2 exd5 Nf6. The idea is that if White tries to hold the pawn with 3 c4, Black plays 3--c6 and gets lots of play against the backward d-pawn. An example is given in the first game below. Otherwise, Black takes the pawn at d5 with his knight, and avoids losing time with his queen. Some lines wind up looking a lot like Alekhine's Defense: 3 d4 Nxd5 4 Nf3 g6 5 c4 Nb6. White gets lots of space, but his d-pawn becomes a target for counterplay.

At the time I took the defense up, the standard "refutation" of this line was 3 Bb5+ Bd7 4 Bc4 Bg4 5 f3 Bf5. This is now thought fairly harmless. There is a bizarre side variation that goes 4--b5, but after 5 Be2! White keeps the advantage.

It was fun playing this line; almost every game brought something new. I did pretty well, even against strong players. Why did I stop? I think there were two reasons. The first was the transposition 3 c4 c6 4 d4,

(Hyder continued on page 5)

(Hyder continued from page 4)

entering the Caro-Kann. This is a perfectly good opening for Black, but I didn't like it. The other was that I decided to play more aggressively.

In California I was usually an also-ran, an expert among strong masters. In the Southeast, I was contending for first place, and I wanted every half-point I could get. From thirty-five years of hindsight these are not convincing reasons, but they seemed compelling at the time.

Anyway, I've had fun going through the old games. Perhaps others may like to try this opening. At least it proves that when I suggest finding your own opening, I have practiced what I preach!

First, here's an example of the gambit line. My opponent, John Blackstone, later became California Junior Champion and a master.

Blackstone vs. Hyder: 1 e4 d5 2 exd5 Nf6 3 c4 c6 4 dxc6 Nxc6 5 Nc3 e5 6 d3 Bc5 7 Be2 Bf5 8 Be3?! Bxe3 9 fxe3 Qb6 10 Qd2 Rd8 11 a3 Bxd3 12 Bxd3 e4 13 Nxe4 Nxe4 14 Qe2 Nc5 15 Bf5 g6 16 b4? Nxb4 17 axb4 Qxb4+ 18 Kf1 Rd2 19 Qe1 gxf5 20 Ne2 Ne4 21 Rxa7 O-O 22 Rg1 Rfd1 23 Ra1 Qb2 24 Rb1 Qxb1 25 Resigns.

Some examples of the 3 Bb5+ line, against the redoubtable Henry Gross, the grand old master of San Francisco chess:

Gross-Hyder, team match, 1961: 1 e4 d5 2 exd5 Nf6 3 Bb5+ Bd7 4 Bc5 Bg4 5 f3 Bf5 6 Nc3 Nbd7 7 Bb3 (A few months later Gross played 7 d3 against me, and after Nb6 8 Bf4 Nfxd5 9 Nxd5 Nxd5 10 Qd2 Nxf4 11

(Hyder continued on page 6)

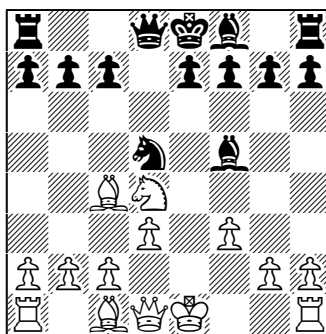
(Hyder continued from page 5)

Qxf4 got nothing special, except a game where he, the better player, eventually found a win!) **Nb6 8 Qe2 Qd7 9 Qe5 O-O-O 10 Nge2 Nxd5 11 a4 f6 12 Qg3 e6**; here too, Gross didn't have much. Gross later made some mistakes, and I won a long game.

But let me not claim I won them all. Against the midwestern master Fischheimer, I missed an important tactic: *Fischheimer-*

Hyder, U. S. Open, 1961:

1 e4 d5 2 exd5 Nf6 3 Bb5+ Bd7 4 Bc4 Bg4 5 f3 Bf5 6 Nc3 Nbd7 7 Nge2 Nb6 8 d3 Nxd5 9 Nxd5!? Nxd5 10 Nd4 (This move surprised me so much I missed the point; after 10--Bc8! White has nothing.)



Position after 10. Nd4

Bg6? 11 Bb5+ (again!) c6 12 Nxc6! and although Black hung on a while after **12--Qb6 13 Nd4+ Kd8**, it was all downhill from there.

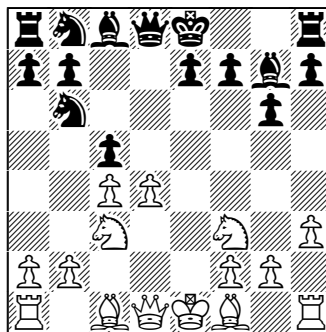
The line 4 d4 was and is considered good, and my games had a lot of different tries. Here's one that's a bit different, from a quad played in the town plaza of Sonoma, California: *Wood vs. Hyder, 1960:*

1 e4 d5 2 exd5 Nf6 3 Nf3 Nxd5 4 d4 g6 5 c4 Nb6 6 Nc3 Bg7 7 h3 c5!? see diagram on page 7 (I had decided that if White had spent a move for h3, I had time to get away with this: 8 dxc5 Qxd1+, 9 Nxd1 Na4.) **8 d5 O-O 9 Bg5 Qe8 10 Qc2 Na6 11 a3 e6 12 O-O-O (Risky!) exd5 13 cxd5 Bf5 14 Bd3 Bxd3 15 Rxd3 Qd7 16 d6 Nb4! 17 axb4 cxb4 18 Nd5 Nxd5 19 Rxd5 Rac8 20 Rc5 Rxc5 21 Qxc5 Rc8 22 Qxc8+ Qxc8+ 23 Kb1 b3 24 Rc1 Qf5+ 25 Ka1 Qa5+ 26 Resigns.**

(Hyder continued on page 7)

(Hyder continued from page 6)

There are other lines, such as 3 Nc3 Nxd5, a variation of Alekhine's Defense; after 4 Bc4 Black must play carefully. As in any other opening, there is a lot to learn, but with any opening you make your own, you will probably soon know more than your opponent!



Position after 7...c5!?

Kasparov v Deeper Blue

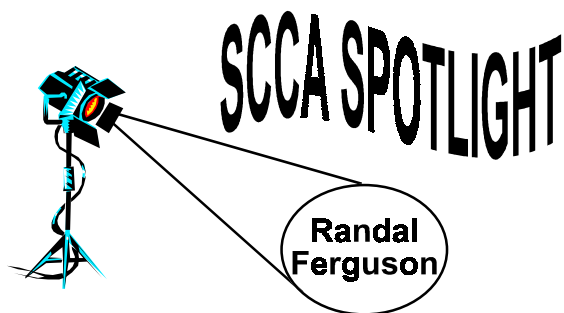
The Rematch



World Chess Champion Garry Kasparov is set to battle the IBM super computer known as Deeper Blue, which is the second generation of the original Deep Blue computer that Kasparov beat last year. The six game match will be held in New York City on May 3-11, 1997. The winner will receive \$700,000, while the loser takes home \$400,000.

Deeper Blue has a processing speed of 240 million moves per second. In a recent sparring session, Deeper Blue convincingly beat Deep Blue. The IBM team has vowed that they “will crush Kasparov like a bug.”

The games will be played on May 3, 4, 6, 7, 10, and 11, beginning at 3:00 PM EST. *For more information, visit the IBM web page at <http://www.chess.ibm.com>.*



Home: Greenville, SC

Birthplace: New Jersey

Age: 38

State Championships: 1987, 1996

Occupation: High School Teacher (German/History)

Education: B.M.E and M.M (Master of Music)

Hobbies: Chess, tennis, singing, conducting, computers

Last non-chess book read: *Who, Where, What, When and How of History*

Last movie seen: *Star Wars*

Current rating: 2251

Initial rating: 1571

Favorite chess player: Mikhail Tal

Favorite chess book: Fischer's *My 60 Memorable Games*

Advice to novice players: Find openings that fit your style

(Spotlight continued on page 9)

(Spotlight continued from page 8)

of play and stick with them, even when you occasionally lose with them.

Chess playing style: Tactical/open positions

Words to play by: Play *your* style.

Favorite opening: Sicilian Najdorf

Favorite TV show: Seinfeld

Favorite sports team: South Carolina Gamecocks!!! (Avid fan)

Started playing at age: 12-13

Marital status: married

Children: 2

Latest Accomplishment: Winning both the 1996 SC Open and Closed Championships.

Words that best describe me: Dependable, good sense of humor, enjoys life.

Favorite game: Annotated below.

Randal Ferguson (2251) v Miles Ardaman (2471)

Land of the Sky

February 6, 1993

Nimzovich Defense

Annotated by Randal Ferguson

1. e4 ♘c6 2. ♘f3 d6 3. d4 ♘g4 4. c3 ♘f6 5. ♘bd2
e6 6. ♖b3! (Pressuring the queenside to take advantage of
Black's early development of his Queen's bishop.) 6...♗c8

(Spotlight continued on page 10)

(Spotlight continued from page 9)

(Somewhat displacing the Queen.) 7. **Qd3** a6 8. 0-0 **Qe7** 9. **Re1** e5 10. **h3**

Qh5 11. **Re3** (Looks strange, but later on helps keep White's pawn formation in tact.) 11...**Qd7** 12. **Qe2** **Qg6** 13. **a4** (Trying to gain some queenside space.)

13...0-0 14. **Qf1** ed 15. **cd** **Qf6** 16. **Qd1** **Re8** 17.

Qg3 a5 (Here Nb4 a5 c5

would have been better, opening up the position to take advantage of Black's two bishops.) 18. **Qb5** (Wanting to exchange a Bishop for a Knight to limit Black's central pull.)

18...**Qb4** 19. **Qd7** **Qd7** 20. **Qd2** **Qa6** 21. **Qc3** d5!

22. e5 **Qe7** 23. **Re1** **Re6** 24. **Qe2** **Qa2** 25. **Qa1** **Qc3**

26. **bc3** **Qf5** (Rb2 was better.) 27. **g4** **Qc2** 28. **Qc2**

Qc2 29. **Qe1** **Qb3** 30. **f4** **Re6** 31. **Qf3** **Re8** 32. **f5**

(The Germans have a wonderful saying that goes: *Wer A sagt, muss auch B sagen*, which translates to *He who says A must also say B*. In other words, if you start with a plan,

you may as well plow through and finish it.) 32...**b5** (The saying applies to Black's plan. White expands on the king-side and Black on the queen-side.)

33. **ab** **Re5** 34. **Qf4** **a4** 35. **g5** **a3** 36. **f6** **Qf8**

(gxf6 was better) 37. **e6!** **fe?**

(Re6 giving up the exchange was Black's only hope.) 38.

f7+ **Qf7** (Forced, as 37...

Kh8 allows 39. Ne5 Ra6 40.

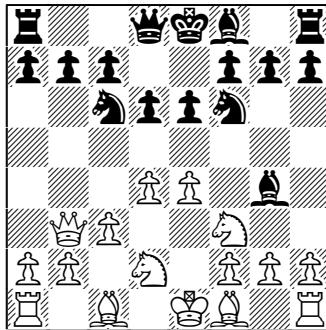
Nfg6+ hg6 41. Ng6+ Kh7 42.

Nf8+ Kh7 43. Ng6+ Kh7 44.

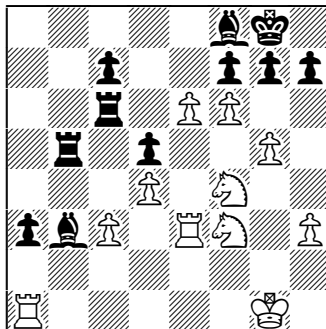
f8Q Kg6 45. Qe8+ and ca-

pitulation.) 39. **Qe5+** **Qg8**

40. **Qc6** **a2** 41. **Re2** **Qd6**



Position after 6. **Qb3!**



Position after 37. **e6!**

(Spotlight continued on page 14)

From the Editor's Desk

Floyd Steps Down as Editor

Due to other commitments, Bill Floyd has decided to step down as editor. I thoroughly enjoyed working with Bill and will miss him immensely.

When Bill and I agreed to serve as co-editors, neither of us really understood the tremendous amount of work required to produce this newsletter. Every issue I work on makes me appreciate even more the years of excellent service rendered by Lee Hyder. Of course, Bill's departure means even more work for me. However, he has indicated that he will be a regular contributor.

Not my Newsletter

In a recent conversation with Lindsay Blanks, he said that he would be kind enough to send me some game scores for "my newsletter." His comment struck a raw nerve. I pointed out that this newsletter is not mine, but instead belongs to the members of the South Carolina Chess Association. While Lindsay meant no harm, his words belie an attitude held by many that the newsletter is only the editor's concern. As a result, members don't see a need to make contributions to the newsletter, yet they complain about its shortcomings. It was this same apathy that prevented me from contributing anything to the newsletter prior to becoming editor. Please take some time to contribute a game score or article. Annotated games are especially cherished. However, every submission is greatly appreciated. I look forward to hearing from you.

South Carolina Games

Blanning v Bovay

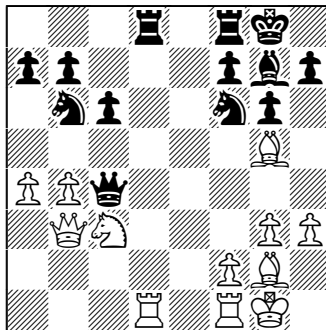
25th Snowstorm

Benko Opening

February 22, 1997

(Annotated by Henry J. White)

1. g3 (The Benko-Bilek-Barczay Opening, aka the King's Fianchetto Opening. It can easily transpose into any opening in which White fianchettoes his king bishop.) **1... ♟f6** **2. ♖g2 c6** **3. c4** (Better was 3. d4 d5 4. c4 dxc4 5. a4) **3... d5** **4. cxd ♟xd5** **5. ♟c3 g6** **6. d3 ♖g7** **7. ♖d2 ♟f6** **8. ♟f3 O-O** **9. O-O ♟bd7** **10. b4** (Played to keep the knight from c4. The problem with White's position is that the half open d-file makes it difficult for him to play e4, which would result in a backward pawn.) **10... ♟b6** **11. ♖b1 ♖g4** **12. h3 ♖xf3** **13. ♖xf3 ♟d7** **14. ♖g2** (Kh2 may have been better.) **14... e5** **15. a4 ♖ad8** (Creating tremendous pressure in the d-file.) **16. ♟b3 e4** **17. ♖g5 exd** **18. exd ♟xd3** **19. ♖bd1 ♟c4?** (A pawn up, Black is anxious to trade queens and win a ba-



Position after 19... ♟c4?

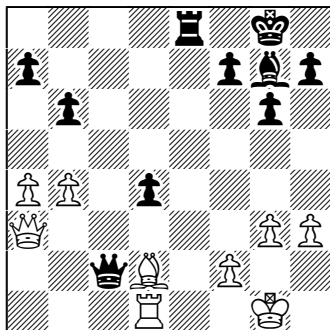
sic engine. However, this is premature as the position contains a bit of venom. Better was 19... Qf5.) **20. ♟a3??** (White misses a golden opportunity to mix things up. Trading queens results in a slow death. Much better was 20. Qxc4 Nxc4 21. Rxd8 Rxd8 22. Ne4! Nxe4 23. Bxd8 Nc3 24. Re1. The rook and two bishops should win for White.) **20... ♖xd1** **21. ♖xd1 ♟fd5** **22. ♟xd5 ♟xd5** **23. ♖xd5 cxd5** (A dangerous passed pawn has been created. "The passed pawn", said Nimzovich, "is a criminal who must be kept under lock and key.") **24. ♖e7 ♖e8** **25. ♖c5 b6** **26.**

(SC games continued on page 13)

(SC games continued from page 12)

♙e3 d4

27. ♙d2 ♖c2 (The Queen takes an aggressive position on the seventh rank. The position practically



Position after 27...♖c2

plays itself from here.)

28. ♖a1 d3 29. ♖c1 ♙b2 30. ♖b1 ♖e2 31. ♙e3 ♙c3 32. a5 ♖x b1 33. ♖x b1 d2 34. a x b 35. ♙x d2 ♙x d2 36. ♖b2 ♖e1+ 37. ♖g2 ♙g5 38. b5 ♙e7 39. f4 ♙c5 40. ♖f3 ♖c1 41. ♖g4 ♖c4 42. ♖g5 ♖g7 43. ♖g4 ♖b4 44. ♖d2 ♖x b5 45. ♖d7 ♖b2 46. ♖b7 ♖b3 47. f5 ♙f2 48. f x g h x g 49. h4 ♙x g3 0-1.

Williams (2175) v Neel (2116)

*25th Snowstorm
Center Counter Game
February 22, 1997*

1. e4 d5 2. exd ♗f6 3.

c4 e6 4. d x e ♙x e6 5. d4 ♙b4+ 6. ♙d2 ♖e7 7. ♙e2 O-O 8. d5 ♙f5 9. ♙x b4 ♖x b4+ 10. ♖d2 ♖e7 11. ♗c3 ♗bd7 12. ♗f3 ♗c5 13. O-O ♖f-e8 14. ♗d4 ♙g6 15. ♖ae1 ♖d7 16. f4 ♙e4 17. ♗f3 ♙x f3 18. ♙x f3 a6 19. ♖e5 ♖d6 20. b4 ♗e6 21. c5 ♖d7 22. ♖fd1 ♗f8 23. d6 c6 24. ♗a4 ♖ab8 25. ♗b6 ♖d8 26. ♖d1e1 ♖x e5 27. ♖x e5 ♗g6 28. ♖e1 ♗d7 29. ♗x d7 ♖x d7 30. ♙h5 b6 31. ♙x g6 h x g6 32. ♖e7 ♖f5 33. d7 ♖h7 34. ♖e8 1-0.

Rothstein v Yeoh

*25th Snowstorm
Sicilian Defense
February 22, 1997*

1. e4 c5 2. ♗f3 g6 3. c3 ♙g7 4. ♙c4 e6 5. O-O ♗e7 6. d4 c x d 7. c x d d5 8. ♙b5+ ♙d7 9. ♙x d7+ ♖x d7 10. e5 O-O 11. ♗c3 ♗c6 12. ♙d2 ♖ac8 13. ♗e2 ♖c7 14. ♖c1 ♖b6 15. ♙c3 ♖a6 16. a3 b5 17. ♖d3 ♗a5 18. g4 ♗ec6 19. ♙d2 ♗c4 20. ♖c2 ♖b6 21. ♙g5 f6 22. exf ♙x f6 23. ♙x f6 ♖x f6 24. h4 ♖cf8 25. ♗h2 ♖d8 26. g5 ♖f5 27. f3 e5 28. ♗g3 ♖f4 29. h5 ♖x g5 30. h x g h x g 31. ♖g2

(SC games continued on page 14)

(SC games continued from page 13)

♖×d4 32. ♜c2 ♜d2 33.
♖×d2 ♜×d2 34. ♜f2
♜×g3+ 35. ♜g2 ♜e1+
36. ♜f1 ♜×f1+ 37. ♜h2
♜×f3+ 38. ♜g3 ♜e7 39.
♜h3 ♜h1+ 40. ♜g3
♜h4++ 0-1.

Inman v Chandler

High School Championship

Sicilian Defense

March 8, 1997

1. e4 c5 2. ♜f3 ♜c6 3.
♜b5 d6 4. ♜×c6+ b×c6
5. 0-0 ♜f6 6. ♜c3 g6 7.
d3 ♜g7 8. ♜e3 ♜g4 9.
h3 ♜e6 10. ♜d2 0-0 11.
♜h6 ♜b6 12. ♜ab1 a5
13. a3 ♜a6 14. ♜×g7
♜×g7 15. e5 d×e5 16.
♜×e5 ♜d8 17. ♜e3 ♜c7
18. ♜×c5 h5 19. ♜e3
♜b8 20. ♜f3 ♜d6 21.
♜fe1 ♜ab6 22. ♜a4
♜b6 23. ♜c5 ♜×b2 24.
♜×e6+ 25. ♜×b2 ♜×b2
26. c4 ♜f7 27. ♜g5+
♜g8 28. ♜×e6+ ♜×e6
29. ♜×e6 ♜f8 30. ♜×c6
♜b3 31. c5 ♜×d3 32. a4
♜e8 33. ♜a6 ♜d5 34.
♜e6 ♜f7 35. c6 ♜×e6
36. c7+ ♜d7 37. ♜c6
♜c8 38. f3 ♜e8 39.

♜×g6 ♜×c7 40. g4 h×g4
41. h×g4 ♜d2 42. ♜g8
♜d7 43. g5 ♜a2 44. g6
♜f6 45. ♜h8 ♜e6 46.
♜f8 ♜c2 47. g7 ♜e5 48.
♜×f6 e×f6 49. g8= ♜ 1-
0.

Swinton v Inman

High School Championship

Caro-Kann

March 8, 1997

1. d4 c6 2. e3 d5 3. ♜c3
♜f5 4. ♜d3 ♜×d3 5.
♜×d3 e6 6. e4 ♜b4 7.
♜d2 d×e4 8. ♜×e4 ♜f6
9. ♜e2 ♜×d4 10. ♜f3
♜g4 11. g3 ♜bd2 12. a3
♜c5 13. ♜e3 ♜×e3 14.
♜×e3 0-0 15. ♜e5 ♜×e5
16. ♜×e5 ♜fd8 17. 0-0
♜h3 18. ♜ad1 ♜g4 19.
♜h5 ♜×h5 20. h4 g5 21.
♜×d8 ♜×d8 22. f3 g×h4
23. f×g4 ♜×g4 24. ♜e4
♜×e4 25. g×h4 ♜g4+ 26.
♜f2 ♜d2+ 27. ♜e3
♜e2+ 28. ♜f4 ♜×f1+
29. ♜e3 ♜f2+ 30. ♜e4
f5+ 31. ♜e5 ♜d4+ 32.
♜×e6 ♜d5+ 33. ♜f6
♜g2 34. h5 f4 35. h6
♜g5 36. c4 ♜e5 # 0-1.

(Spotlight continued from page 10)

42. ♜e6 ♜b6 43. ♜ed8 g6 44. ♜e8+ ♜g7 45. ♜f1
♜f4 46. ♜e6+ ♜f7 47. ♜e7+ ♜g8 48. ♜cd8 ♜a4
(Preventing mate on e8.) 49. ♜g7+ (Here, Black finally re-
signs, as 49...Kh8 50. Nf7 mate is too ugly for the Texas
Senior Master and State Champion to face.) 1-0.

WILL THE REAL WORLD CHAMPION PLEASE STAND UP?

By John McCrary

The world championship title does not go to the world's strongest player automatically, as there is no simple way to measure conclusively who is the strongest. Rather, the world championship goes to the person who is *generally recognized as the strongest*, by winning a system of competitions generally accepted as determining the title. Nowadays, there is no single accepted title

system, thanks to the PCA secession from FIDE, so there is no unequivocal designation of the world champion. There was confusion before the first accepted world championship match in 1886, as well.

But there were at least two other times since

1886 that no one has been sure who the world champion was. For example, can you name the man who was world champion for *one day*? The answer is Dr. Max Euwe, who held the title from 1935-1937. But he also held the title for one day in 1947! The reason was that the FIDE delegates, in a quandary about what to

**“Can you name
the man who was
world champion
for *one day*?”**

do with the vacated championship, (Alekhine had died in 1946 while holding the title), voted to restore the title to Euwe. But the Soviet delegation, arriving late, had the decision reversed the next day, leaving Euwe the only one-day reign in world championship history!

The other time no one was sure who was champion was in the final

(Continued on page 28)

TOURNAMENT NEWS

1997 SCHOLASTIC CHAMPIONSHIPS

BY HENRY J. WHITE

The South Carolina Scholastic Championships were held in Columbia on March 8, 1997. Fifty-nine enthusiastic students competed. The event was once again hosted by Airport High School. Even though Airport did not field a team this year, its faculty sponsor, Curt Landrum, was present the entire day. Michael Spohn of Sumter High School did a superb job organizing and directing the event. He was assisted by Don LeMaster and John McCrary.

High School Section

Jesse Inman of Spartanburg High, David Biggs of the Governor's School for Science and Mathematics, and Maurice Watkins tied for first place in the High School section, each with a score of 4.5. Inman defeated Biggs in a five-minute speed game playoff to take home the first place trophy. Biggs and Watkins took home the second and third place trophies respectively.

(Scholastic continued on page 17)

25TH SNOWSTORM SPECIAL

ON FEBRUARY 22-23, 1997, THE 25TH ANNUAL SNOWSTORM TOURNAMENT WAS HELD IN CHARLESTON, SOUTH CAROLINA. WAYNE WILLIAMS AND MICHAEL SHEAF TIED FOR FIRST IN THE SILVER ANNIVERSARY OF THIS CLASSIC LOWCOUNTRY TOURNAMENT. FORTY-TWO PLAYERS PARTICIPATED. LINDSAY BLANKS DIRECTED THE EVENT.



(Scholastic continued from page 16)

The High School section was very competitive. I enjoyed listening to the good-natured pre-game banter between the students. At one point before the second round, Inman “consoled” one of the other students that perhaps he could take home the first place trophy next year, because it was definitely going home with Inman this year. Inman made good on his boast.

The team competition was especially keen. The students took great pride in representing their schools. It was great to see so many young people excited about the royal game. The team trophy was again won by the Governor’s School, which has had a stranglehold on the team title for several years. The school’s coach, Dr. Clyde Smith, lamented that his team had so little time to study chess, due to the rigorous course of

study at the Governor’s School. The other teams are probably pleased that Dr. Smith’s troops don’t have more time to hone their already formidable skills. The final High School standings are as follows:

- 1. Governor’s School**
- 2. Spartanburg High**
- 3. Dreher**
- 4. CA Johnson**
- 5. Sumter High**
- 6. Saluda High**
- 7. Academic Magnet**

Elementary and Middle

Since there were only six students in the elementary section and five in the middle school section, the two were combined for pairing purposes. Tim Rankin of Greer and Joshua Brunson of Columbia tied for first place in the elementary school section, each with a score of 3.0. Trophies were awarded to each. David Williams from Carver Junior High went undefeated in winning the Middle School

LOCAL CHESS CLUBS

AIKEN

Contact: M. Lee Hyder, SCCA
Vice-President
33 Longwood Drive
Aiken, SC 29801
(803) 648-8924

each Thursday evening from
7:00 PM.

Contact Larry Thompson
(803) 691-9339

ANDERSON

The Blue Ridge Chess Club.
Contact: Bill Willard
(864) 882-7841 after 6:00 PM

CHARLESTON

The Charleston Chess Club
meets every Wednesday from
7:00 PM until closing in the
McDonald's restaurant at 1201
Sam Rittenberg Boulevard
(Highway 7) and Orange Grove
Road. (I-26 Exit #216).

If you can not make it to the
club on Wednesdays, or want to
play at other times, drop by The
Rainbow Cafe (282 King Street)
in downtown Charleston and
perhaps you can play on the big
board!

Contact: Patrick Hart
(path@awod.com)
1558 Periwinkle Drive
Mount Pleasant, SC 29464
(803) 849-8819

COLUMBIA

The City of Columbia Chess
Club meets at Lorick Park, 1751
Lorick Avenue (off North Main)

Some chessplayers have been
meeting informally at the Barnes
& Noble Bookstore on Harbison
Boulevard, across from the Co-
lumbiana Centre Mall. The
gatherings usually occur on Sat-
urday and Sunday afternoon.
Monthly tournaments are also
held. The store is one of the
best bookstores in the state, and
has an excellent selection of
chess books.

Contact: Allen Keitz
278-A Harbison Blvd
Columbia, SC 29212
(803) 749-9009

GREENVILLE

The Greenville Chess Club
meets at the Bobby Pearce Cen-
ter, 820 Townes Street Exten-
sion, each Thursday evening
from 7:30 PM.

Contact: Wayne Williams
402 Berea Forest Circle
Greenville, SC 29611
(864) 246-6363

E-mail: Norbert C. Thiemann

(Local Clubs continued on page 19)

(Local Clubs continued from page 18)
 (corea@pipeline.com)

GREER

The BMW Chess Club meets in the Employee Club of the BMW Manufacturing Corporation at 1400 Highway 101 South.

Contact: Horace Mays
 (864) 989-6000, Ext. 7334 or
 Fax: 989-5861

HARTSVILLE

The Hartsville Chess Club meets at 2120 Ousleydale Road each Thursday evening from 7:30 PM.

Contact: Billy Walters
 (803) 383-1089

MURRELLS INLET

The Murrells Inlet Chess Club meets at 341 Rum Gully Circle each Tuesday from 7:00 PM.

Contact: Ray Lewis
 (803) 651-8924

MYRTLE BEACH

The South Strand Chess Club meets at the Surfside Civic Center each Tuesday from 7:00 PM.

Contact: William Smith
 (803) 238-0853

NORTH AUGUSTA

The North Augusta Chess Club meets in the Riverview Park recreation center basement each

Wednesday evening from 7:00 PM.

Contact: M. Lee Hyder, SCCA
 Vice-President
 33 Longwood Drive
 Aiken, SC 29801
 (803) 648-8924

ROCK HILL

The Rock Hill Chess Club meets in the student center at York Technical College on Tuesday evening from 6:00 PM.

Contact: Pete Danker
 (803) 548-0955

SPARTANBURG

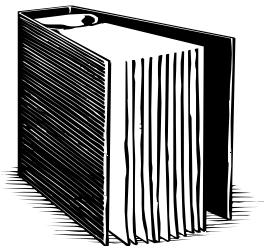
The Spartanburg Chess Club meets in Mimi's Uptown Deli, 180 East Main Street, each Tuesday evening from 7:30 PM.

Contact: David Williams (864) 573-9861; Spencer Matthews (864) 582-2551; club phone (864) 585-8332

WOODRUFF

The Woodruff Chess Club meets in the First Citizens Bank, corner of Pine Street & Main Street, each Monday evening from 7:00 PM.

Contact: Lloyd Angel
 (864) 476-7860



INSIDE THE RULES

By Henry J. White

TOUCH MOVE

The following query was posted on the internet by John Katic of Carleton, Canada:

This occurred on Board 1 of a High School Chess Tournament. Player A made his move but did not punch his clock.

Player B thought for a while then touched a piece which, if moved, would lose the game.

Player B argued that since his opponent had not completed his move by punching the clock, it really was not his move; therefore, touching the piece does not count and he should be allowed to move another piece.

My judgment was: The touched piece must be moved regardless of whether there is a clock or whether it was punched. Am I correct?

All the respondents on the internet agreed with Mr. Katic's judgment that Player B must move the touched piece. I must respectfully disagree.

(Rules continued on page 21)

(Rules continued from page 20)

Move Determination v Move Completion

The US Chess Federation's Official Rules of Chess (4th ed.) distinguishes between the determination and completion of a move. A player's move is "determined with no possibility of change when the player's hand has released the piece, and completed when that player punches the clock." Rule 9A. Under this approach, there is a period of time between the move's determination and its completion. In the query, Player B touched a piece during this interim period before his opponent had punched his clock. Does the touch rule apply during the period between move determination and completion?

The touch rule provides that "a player *on the move* who deliberately touches one or more pieces of the same color, in a manner which may reasonably be interpreted as the beginning of a move, must move or capture the first piece touched that can be moved or captured." Rule 10B (emphasis added). Here, was Player B on the move? If not, the touch move was not applicable and he was free to make another move. Rule 9G1 states that "[a]s soon as the player *completes* the move, it is the opponent's move. . . ." (emphasis added). Thus, Player B was not on the move because Player A had not yet completed his move by punching his clock. Accordingly, Player B was free to move another piece.

By not punching his clock, Player A retained the right to claim a draw by triple repetition of position, the 50-move rule, and insufficient losing chances in sudden death time pressure. Rule 9G1. The retention of these significant rights suggests that Player B should not be burdened with the touch rule until Player A had punched his clock and thereby released his right to

SCCA BUSINESS MEETING MINUTES

By Bill Willard
SCCA Secretary

John McCrary called the meeting to order at 2:30 pm on October 6, 1996.

Item 1. Introductions of State Officers, Newsletter Personnel, and Prominent State Players. In attendance were Justin Daniel, age 12, ranked #41 nationally in his age division, and Brent Bovay, age 18, ranked #45 in his age division.

Item 2. SCCA Survey. State Secretary Bill Willard reviewed the results of the SCCA Survey. Copies were made available to interested members. Discussion began on several issues, specifically the number of sections of the tournament, the amount of prizes in each section, and entry fees.

Straw polls (non-binding) were taken after the discussion. Results of the straw polls:

- † Entry fees: keep the same-21 votes; increase to \$35-\$40-12 votes.
- † Players playing up to be charged a higher entry fee: Yes-12 votes; No-20 votes.
- † Allowing all players to play up: Yes-19 votes; No-8 votes.
- † Number of sections: Two sections-6 votes; Three or more sections-19 votes. Note: the emphasis would be on dividing the lower section into smaller ranges, and class prizes would still be offered.

An ad hoc committee was appointed to make recommendations regarding the conditions for next year's (1997) State Championship structure. This committee

(Minutes continued on page 23)

(Minutes continued from page 22)

will take input from the survey and the discussion at the business meeting, then make a formal recommendation. Members of the committee are: Bill Corbett (Chair), Michael Spohn, Ronnie Farmer, Lindsay Blanks, Don LeMaster, and John McCrary (liason officer).

Item 3. Treasurer's Report. The SCCA treasury is in sound shape. Co-Editor of *Palmetto Chess*, Henry White, is donating the printing costs, and those members present offered their gratitude.

Item 4. Pat Hart presented a proposal allowing the state association to become co-sponsors with local clubs to subsidize local tournaments, particularly as insurance against losses. The following recommendations were made:

The SCCA authorizes a committee to develop guidelines to give financial support to local clubs and increase communication with local clubs. A standing committee will be designated for this purpose.

The recommendation was passed. Members of this committee are: Pat Hart (liaison officer), William Smith, Lee Hyder, Dennis Fish, and Lindsay Blanks. Proposed guidelines will be published in *Palmetto Chess* for review, and mail ballots will be sent to the membership for approval.

Item 5. Scholastic issues were discussed. Volunteers for the Scholastic committee were solicited. Brent Bovay, David Biggs, and Mike Smith volunteered, and Pani Wickramasinghe was asked to serve.

Item 6. The Nominating Committee recommended

(Minutes continued on page 28)

25th Snowstorm Special
February 22-23, 1997
TD-Lindsay Blanks

Player	Rating	1	2	3	4	5	Total
1. Wayne Williams	2175	W21	W13	W6	W5	D2	4.5
2. Michael Sheaf	2116	W22	W12	W8	W9	D1	4.5
3. Lindsay Blanks	2069	BYE	W26	L42	W40	-	2.5
4. Robert Feldstein	2000	W23	W17	L9	-	BYE	2.5
5. Brenton Bovay	1981	W24	W14	W10	L1	W42	4.0
6. Douglas Holmes	1956	W25	W19	L1	D17	W21	3.5
7. John Vonderlieth	1927	L27	W30	W24	W28	L11	3.0
8. Jon Pietras	1819	W28	W18	L2	D25	D32	3.0
9. Khay-Guan Yeoh	UNR.	W29	W27	W4	L2	D16	3.5
10. Ronald Whittington	1763	W30	W40	L5	D32	W25	3.5
11. Daniel Sheaf	1760	W31	L42	W27	W34	W7	4.0
12. Albert Errazo	1729	W32	L2	L25	W23	D28	2.5
13. Norman Neel	1725	W33	L1	L28	W22	W34	3.0
14. James Blanning	1700	W34	L5	L32	D24	-	1.5
15. James "Clubber" Hyatt	1700	D35	L16	BYE	W27	BYE	2.5
16. James Collins	1611	D36	W15	W35	D42	D9	3.5
17. Justin Daniel	1594	W37	L4	W33	D6	D41	3.0
18. Miklos Kiss	1553	W38	L8	L34	W29	W33	3.0
19. William Pilaud	1500	W39	L6	L40	L33	-	1.0
20. Richard Hartnett	1497	L40	L32	D30	BYE	W35	2.0
21. Frank Abbott	1491	L1	W31	D41	W35	L6	2.5
22. Donald Wilson	1463	L2	L34	W31	L13	LF	1.0
23. Clyde Baker	1444	L4	L33	W39	L12	W37	2.0
24. Anthony Brown	1430	L5	W38	L7	D14	D30	2.0
25. Kenneth Pestka, II	1427	L6	W37	W12	D8	L10	2.5
26. James Walyus	1401	BYE	L3	W36	L41	-	1.5
27. Jerry Rothstein	1400	W7	L9	L11	L15	D40	1.5
28. John Loy	1374	L8	W39	W13	L7	D12	2.5
29. Raymond Roberts	1349	L9	L41	W38	L18	BYE	1.5
30. Michael Lafer, Jr.	1257	L10	L7	D20	W37	D24	2.0
31. David Biggs	1177	L11	L21	L22	W36	W39	2.0
32. Paul Webb	1163	L12	W20	W14	D10	D8	3.0
33. Michael Lafer, Sr.	1108	L13	W23	L17	W19	L18	2.0
34. Meng-Yeng Lu	1097	L14	W22	W18	L11	L13	2.0
35. Johnny Billman	1004	D15	W36	L16	L21	L20	1.5

25th Snowstorm continued

Player	Rating	1	2	3	4	5	Total
36. Mon Whon Lu	836	D16	L35	L26	L31	WF	1.5
37. Steven Cleveland	645	L17	L25	BYE	L30	L23	1.0
38. Wallace Kartsen	UNR	L18	L24	L29	L39	-	0.0
39. Brian Neilson	UNR.	L19	L28	L23	W38	L31	1.0
40. Ernesto Cabiad	UNR.	W20	L10	W19	L3	D27	2.5
41. Joseph Soney	UNR.	L42	W29	D21	W26	D17	3.0
42. Hugh Howey	UNR.	W41	W11	W3	D16	L5	3.5

State Scholastic Championships**March 8, 1997****TD-Michael Spohn****High School**

Player	Rating	1	2	3	4	5	Total
1. Jesse Inman	1336	W21	W15	W14	W5	D2	4.5
2. David Biggs	1191	W44	W29	W16	W26	D1	4.5
3. Maurice Watkins	1130	W47	W39	W20	D7	W12	4.5
4. Michael Lafer	1307	W25	W43	L5	W29	W7	4.0
5. David Chandler	1077	W37	W10	W4	L1	W20	4.0
6. Matt Stone	UNR	W18	W19	L26	W15	W21	4.0
7. Chad Warren	1099	W22	W9	W8	D3	L4	3.5
8. Jabari Leslie	1056	W36	W11	L7	W34	D10	3.5
9. Clarence Alston	860	W45	L7	D11	W40	W23	3.5
10. Christoph Bergen	UNR	W27	L5	W38	W18	D8	3.5
11. Jonathan Fowler	UNR	W13	L8	D9	W39	W24	3.5
12. Erwin Hall	1220	W41	L20	W42	W19	L3	3.0
13. Paul Brannan	1129	L11	W37	W24	L21	W26	3.0
14. Omari Swinton	1099	W38	W42	L1	L20	W28	3.0
15. Christopher Jenkins	1013	W46	L1	W22	L6	W34	3.0
16. Michael Mallin	1011	W35	W34	L2	L23	W29	3.0
17. Derek Gamble	995	L34	W36	L21	W37	W33	3.0
18. Forrest Davidson	984	L6	W35	W30	L10	W32	3.0
19. Stefan Gradinaru	979	W33	L6	W32	L12	W31	3.0
20. Scott Adkins	952	W32	W12	L3	W14	L5	3.0
21. Walter Altman	916	L1	W46	W17	W13	L6	3.0
22. Ben Bruce	759	L7	W45	L15	W35	W27	3.0

High School continued

Player	Rating	1	2	3	4	5	Total
23. Terry L. Wells	UNR	L42	W38	W28	W16	L9	3.0
24. Willie McLeod	UNR	D26	W31	L13	W25	L11	2.5
25. Jonathan Mason	666	L4	W48	D39	L24	W40	2.5
26. Travis Garrett	UNR	D24	W27	W6	L2	L13	2.5
27. Michael Robbins	1048	L10	L26	W47	W36	L22	2.0
28. James Southard	958	L31	W33	L23	W30	L14	2.0
29. Christopher Jones	843	W30	L2	W31	L4	L16	2.0
30. Adrian Taylor	UNR	L29	W44	L18	L28	W41	2.0
31. Heath Carroll	UNR	W28	L24	L29	W43	L19	2.0
32. Michael Summer	UNR	L20	W41	L19	W47	L18	2.0
33. Michael Berry	UNR	L19	L28	W44	W42	L17	2.0
34. Brandon Fornwalt	UNR	W17	L16	W43	L8	L15	2.0
35. Trelas Heatley	UNR	L16	L18	W45	L22	W39	2.0
36. Chace Shealy	UNR	L8	L17	W48	L27	W44	2.0
37. Justin Miller	UNR	L5	L13	W46	L17	W42	2.0
38. Jonathan Williams	UNR	L14	L23	L10	W45	W43	2.0
39. James Lambert	805	W40	L3	D25	L11	L35	1.5
40. Matthew Bragg	UNR	L39	D47	W41	L9	L25	1.5
41. Jarrod Garceau	863	L12	L32	L40	W46	L30	1.0
42. Blake Crosby	837	W23	L14	L12	L33	L37	1.0
43. Charles Tyler	696	W48	L4	L34	L31	L38	1.0
44. Christopher Smoak	655	L2	L30	L33	W48	L36	1.0
45. Christopher Evans	UNR	L9	L22	L35	L38	W48	1.0
46. Mike Smith	UNR	L15	L21	L37	L41	W47	1.0
47. Sara Lemanski	610	L3	D40	L27	L32	L46	0.5
48. David Rogers	UNR	L43	L25	L36	L44	L45	0.0

Middle & Elementary

Player	Rating	1	2	3	4	5	Total
1. David Williams	1129	W5	W10	W6	W7	W3	5.0
2. Kenneth McNair	911	W11	W3	L7	W9	W6	4.0
3. Timmy Rankin	1052	W9	L2	W8	W5	L1	3.0
4. Joshua Brunson	UNR	L10	L5	BYE	W8	W9	3.0
5. Justin Foxworth	UNR	L1	W4	W11	L3	W7	3.0
6. David Sorrow	978	W8	D7	L1	W10	L2	2.5
7. Krista Williams	585	BYE	D6	W2	L1	L5	2.5
8. Daniel McEachern	UNR	L6	BYE	L3	L4	W11	2.0
9. Gerald Lancaster	UNR	L3	W11	W10	L2	L4	2.0
10. William Boyd	UNR	W4	L1	L9	L6	BYE	2.0
11. Donovan Hardy	UNR	L2	L9	L5	BYE	L8	1.0

(President continued from page 3)

mended.

I now have the unusual distinction that I chair three national committees, more than anyone else in the USCF. I chair the Hall of Fame, membership growth, and FIDE advisory committees, as well as serving as vice-chair of the Ethics Committee. Add to that my positions with the US Chess Trust, and you can see that my biggest problem is knowing how to organize my time! Pat Hart suggested that I take a refresher course in the "just say no" approach, and he has a point.

Needless to say, I am extremely grateful to the talented individuals within the SCCA who have taken on many of the responsibilities of SCCA activities. Our thriving scholastic program and the excellent appearance of *Palmetto Chess* are testimonies to the talents of our SCCA leaders. Unlike the USCF, we have balanced our budget, and unlike FIDE, we have maintained the integrity of our state championships!

Newcomers to the SCCA may be unaware of our state's chess heritage. Paul Morphy's father and uncle were Charleston natives, and a Morphy family gravestone still stands in a Charleston cemetery. It is located in the old Catholic churchyard behind the new downtown Omni, ten paces from the front fence on the right side, with an angel on the stone. Our first true state champion, Isaac Orchard, was well known to Steinitz, who mentioned Orchard in his writings. Most lists of our state champions, however, start with those recognized by the SCCA, which was not formed until 1926. Orchard predated the SCCA by several decades.

I look forward to seeing you all this fall at the state championship!

(Real World Champion continued from page 15)

months of 1920. Dr. Lasker, the defending champion, had resigned the world championship to Capablanca in June 1920. Capablanca made it clear that he accepted the title, but also was concerned that the chess world would not recognize him as champion just because the previous champion said he was! So, he persuaded Lasker to play a match anyway in 1921. The match negotiations were complicated by the question of just who was the champion and who was the challenger. Although both players agreed Capablanca was defending champion, the match terms carefully avoided the question of who would be champion in case of a tie match. Also, Lasker was given the larger prize regardless of result, a completely illogical arrangement for the man considered as the challenger. After Capablanca's easy win, the confusion was eliminated, and most consider 1921 as the end of Lasker's reign.

(Minutes continued from page 23)

the following nominations for officers and delegates:

President: John McCrary
 Vice President: Lee Hyder
 Secretary: Bill Willard
 Treasurer: Pat Hart
 USCF Delegate: John McCrary
 First Alternate: Lee Hyder
 Second Alternate: Bill Corbett

No floor nominations were made. All nominations, as listed above, were approved as read.
 The meeting adjourned at 3:37 pm.

Scholastic Quick Chess Championship April 19, 1997

Location: Sumter High School
2580 McCray's Mill Road

Rounds: 5 or 6 round swiss

Time Control: G10

Entry Fee: \$3.00

Trophies to 1st, 2nd, & 3rd individuals. 1st place team trophy.

USCF membership required.

Registration: 8:25 - 9:00am.

Rounds: 9:30, 10:00, 10:30, 11:00, 11:30, and 12:00.

Contact: Michael Spohn 803-469-9386 or 803-481-4480.

Adult open section: There will also be an open section for adults who want to play some quick chess with the same time control and round times. The entry fee will be \$5.00.

3rd Annual Gamecock Spring Classic April 19, 1997

The 3rd Annual Gamecock Spring Classic will be at Sumter High School, 2580 McCray's Mill Road, on Saturday April 19th. It will be a 3 round swiss G30, with a \$5.00 entry fee. Registration is between 8:25-9:00am and 12:30-1:00pm. Rounds 1:30, 2:45, and 4:00. There will be a cash prize of \$25.00, \$10.00 to each 8 man section. USCF membership required. Contact Michael Spohn at 803-469-9386 or 803-481-4480.

Rock Hill G/60 Championship

April 19, 1997

Number of Rounds: 4

Format: Round-Robin

Time Control: G/60

Prize Fund: \$50 first, \$25 second each section

Sections: 6-Player sections, per rating

Location: Hampton Inn
Exit 79, I-77 (Dave Lyle Blvd.)
Rock Hill, SC 29730
Hotel Room \$55 per night, mention tournament

Entry Fee: \$18 pre-entry, by 4/18/97, \$21 at site

Registration: 7:30-8:45

Games: 9-11:15-2-4

Entries: Pete Danker
7119 Ridgewood Road
Ft. Mill, SC 29715
803-548-0955 (after 5:30 pm)

NS; NC

Special Note: Special section(s) for documented ratings U-1000, if attendance allows. This rating must be documented in writing, either in the latest issue of the rating list, on the latest *Chess Life* label, or elsewhere.

Palmetto Chess is published quarterly by the South Carolina Chess Association, a non-profit membership organization that organizes and promotes chess competition in South Carolina. It is the US Chess Federation's official state affiliate chapter for South Carolina. Entire contents © 1997 by the South Carolina Chess Association. All rights reserved. Any reproduction in whole or in part, without the written permission of the South Carolina Chess Association, is prohibited.

Membership is \$8 per year, or \$3 for juniors under age 19.

Officers of the South Carolina Chess Association are:

President- **John McCrary**, 564 Rainbow Circle, West Columbia 29070 E-mail endofterainbow@msn.com

Vice President- **M. Lee Hyder**, 33 Longwood Dr., Aiken 29803 E-mail hyder@groupz.net

Secretary- **Bill Willard**, 506 West North 4th Street, Seneca 29678 E-mail bwillard@carol.net

Treasurer- **Pat Hart**, 1558 Periwinkle Drive, Mount Pleasant 29464 E-mail path@awod.com

Palmetto Chess is edited by:

Henry J. White, 320 Whitehurst Way, Columbia 29229 E-mail d4nf6@aol.com

Palmetto Chess
320 Whitehurst Way
Columbia, SC 29229