

# Palmetto Chess

Published by the South Carolina Chess Association

---

December 1997

---

*ferguson*



*wins again!!*

---

Volume 32, Number 4

---

## TABLE OF CONTENTS

|                                       |    |
|---------------------------------------|----|
| The President's Page.....             | 3  |
| Play Your Own Opening.....            | 4  |
| USCF Delegates' Meeting .....         | 6  |
| Treasurer's Report .....              | 8  |
| Palmetto Chess Colloquy.....          | 9  |
| Computer Software Review .....        | 10 |
| South Carolina Games .....            | 17 |
| Scholastic Report .....               | 19 |
| Tournament News.....                  | 20 |
| From the Editor's Desk.....           | 23 |
| Local Chess Clubs.....                | 24 |
| South Carolina's Chess Champions..... | 26 |
| Crosstables .....                     | 35 |
| Upcoming Tournaments.....             | 39 |

# The President's Page

By Michael Spohn

SCCA President

I want to thank Dr. John McCrary and Dr. Lee Hyder for everything they have done and continue to do for the SCCA and USCF. Their shoes will not be easy to fill. If you can, please take the opportunity to personally thank them for the work they have done for our chess association.

I want to congratulate John McCrary and Bill Willard for the wonderful job they did at our State Championship. It was definitely one of our best sites, and the turn out was excellent. As a result, we have already taken steps to procure the site again

for next year.

There were three main points raised at our annual meeting this year: (1) the addition of a youth section at the state championship; (2) the revival of the South Carolina Open Championship; and, (3) the sponsorship of more tournaments.

With your help we can make progress on each of these. Arrangements are already being made to procure the extra room we did not use at this year's State Championship so that it can be used next year for a youth section. It is my intention to have our scholastic competitors

***"It is my hope to eventually have one tournament each month somewhere in South Carolina."***

*(President continued on page 27)*

# Play Your Own Opening!

## Part IV

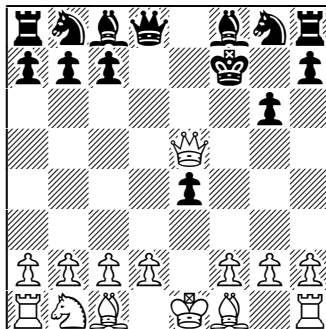
By Lee Hyder



It is a good idea, as you develop your own opening repertoire, to keep it to yourself, and avoid the temptation to show your prospective opponents how smart you are. (Remember, when I wrote about the Center Counter, it was an opening I used to play.) You will find a lot of master analysis on obscure openings that masters don't play, for that very reason. There are those, however, who can't resist the temptation of publicizing their findings, even though they plan to keep playing them. That gives the rest of us the chance to find the holes.

Consider, for example the rather amusing case of the Tennison Gambit. Many years ago a proponent of this obscure opening published some analysis promoting it in *The Chess Correspondent*, the magazine of the Correspondence Chess League of America. A critical line went:

1. Nf3 d5 2. e4?! dxe4 3. Ng5 and if now 3...e5, then 4. Nxf7!? Kxf7 5. Qh5+ g6 6. Qxe5, with lots of attack for the sacrificed material (Bc4+ is coming up). I decided White should not be able to get away with this, and after some study convinced myself that by a counter-



Position after 6. ♕xe5

(Hyder continued on page 5)

*(Hyder continued from page 4)*

sacrifice of the rook on h8 with **6...Be6**, Black could trap the White queen in the corner after **7. Qxh8 Bg7 8. Qxh7 Ng6**. I sent a letter to the editor pointing that out.

The funny part came when my opponent in a new correspondence game essayed the gambit between the time the first article was published and when my refutation was printed. He played the disastrous 6. Qxe5. Just at the time I made my sixth move (6...Be6!), the next issue was published! The best my opponent could find was 7. Nc3, but after 7...Bg7 his game went to pot in a hurry, and the Tennison gambit retreated into well-earned obscurity. You can be sure, though, that I would have kept quiet about the refutation if I had thought I would ever be playing against the Tennison.

Of course some people write books about such lines, and they are worth a read and some very critical analysis. Many years ago, after a trip to Central America, I acquired a little paper bound volume titled (in Spanish) *Chess in Guatemala*. There were a couple of odd opening ideas in it. One was the “Guatemalan Defense”: **1. e4 b6 2. d4 Ba6!?**, based on the premise that exchanging the f1 bishop gets rid of many of Black’s problems. Some games were given where Black did o.k., including one against Reuben Fine when he was touring Central America. Fine decided to avoid the exchange and played **3. c4**. The other line was a Caro-Kann idea: **1. e4 c6 2. d4 d5 3. e5 Bf5 4. h4**, so that the usual **4...e6** loses the bishop after **5. g4**. It seemed interesting, and it was; a year or two later Tal introduced it to master play in his match against Botvinnik. I’ve often wondered if Tal, a student of languages, also had a copy of the book.

*(Hyder continued on page 28)*

## THE USCF DELEGATES' MEETING

By John McCrary

**T**he US Chess Federation is governed somewhat like the United States in that it has a “congress” (called the Board of Delegates) that meets to set policies. The USCF Board of Delegates meets for a two-day session at the US Open. Like the US Congress, each state is entitled to representation based on its membership. South Carolina has only one Delegate, but large states may have a dozen. Like the US Congress, there are special committees that exercise powerful influence over particular areas of policy, and the chairmen of those

committees may have considerable power in their special areas. The meetings are regulated by strict and complicated rules of parliamentary procedure, and follow a precise agenda. Delegates must speak

---

**Delegate politics can be vicious; it is not unusual for speakers to be sarcastically “hooted down.”**

---

from microphones and may have points of order or attempts to cut off debate intrude into their attempts to address the body. Much is accomplished by “lobbying” in the halls, and there are identifiable factions and special-interest groups that almost resemble political parties. My daughter, Diana, even helped me as a “page” one year, keeping up with motions on the floor while I lobbied in the halls!

**Unlike Congress,** the Delegates are not constrained by a constitution as such, since the USCF bylaws may be quickly amended by the Delegates themselves. Delegate politics can be vicious; it is not unusual for speak-

*(Delegates continued on page 7)*

*(Delegates continued from page 6)*

ers to be sarcastically “hooted down.” The delegates themselves include some of the top leaders in chess: famous players like GM Arnold Denker and IM John Donaldson sit side-by-side with famous organizers like Bill Goichberg of the World Open, and Carol Jarecki, arbiter of the Kasparov-Deep Blue and the Kasparov-Anand matches.

Not surprisingly, “freshman” Delegates, like freshman congressmen, are usually intimidated. Even if they catch on to the parliamentary rules and the rapid pace of debate and get the courage to speak, they are likely to find that no one takes them too seriously; influence takes time to build, and “seniority” counts. I began going to the Delegates’ meetings in 1984, and have been every year (at my own expense) since 1986. Only recently have I built up the experience, credibility, and contacts to allow me to assume a leading role in the meetings. At this year’s meeting in Orlando, I found myself in the middle of things in one of the most productive meetings in recent times.

First, there was the **“Blue-ribbon proposal”** to make major changes in USCF governance. That proposal was made by a special panel charged with studying the way the USCF chooses its officers, among other things. A key idea in that proposal was to have the top officers of the USCF elected as a group to constitute a board, which then chooses the president, vice-president, etc. from among themselves, rather than have separate elections for each of these positions, as is done currently. This seemingly minor change is likely to have major practical significance, in that it would help the best overall people get elected, and create new checks and balances among these top officers.

*(Delegates continued on page 30)*

## 1997 TREASURER'S REPORT

By SCCA Treasurer Pat Hart

**BALANCE 9/30/96**      \$1,838.08

### INCOME

|                      |            |
|----------------------|------------|
| 1996 SC Championship | \$1,250.00 |
| USCF Dues            | \$570.00   |
| Dues                 | \$441.00   |
| USCF State Fund      | \$272.20   |
| 1997 SCCA Scholastic | \$183.00   |
| Interest             | \$23.67    |

### EXPENSES

|                       |            |
|-----------------------|------------|
| 1996 SC Championship  | \$1,091.21 |
| USCF Dues             | \$570.00   |
| Denker Tournament     | \$400.00   |
| 1997 SCCA Scholastic  | \$180.67   |
| Club Support          | \$100.00   |
| Affiliation Renewal   | \$40.00    |
| Scholastic Assistance | \$33.42    |
| Ballots               | \$27.00    |

**TOTAL INCOME**      \$2,739.87

**TOTAL EXPENSES**      \$2,442.30

**NET GAIN**      \$297.57

**BALANCE 9/30/97**      \$2,135.65



## **Palmetto Chess Colloquy:**

### **A candid conversation with former SCCA President John McCrary**

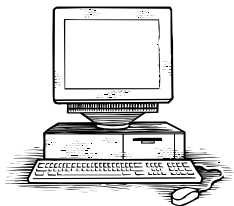
**Palmetto Chess:** Why did you decide not to seek reelection as SCCA President?

**McCrary:** I have become very busy at the national level since 1996, and found I no longer had enough time for everything. I was overlooking details in my presidential duties, and I could not devote creative resources to that job when I was pulled in so many directions. It was obviously time for a change, and there was new talent available, so the decision was easy.

**Palmetto Chess:** When and how did you first become involved in holding SCCA leadership positions?

**McCrary:** I did not initially seek such positions, but I kept showing up at the right place and time! In 1977, I got certified as a TD so that I could try out some new organizational ideas I had. To my surprise, I was almost immediately asked to direct the state championship that year, although I had never directed a tournament. It seems there was no other certified, non-controversial TD in the Midlands available, and they were just looking for one when I showed up! As a result of that lucky occurrence, I was soon appointed by the late Bill Dodgen, then SCCA president, as USCF Alternate Delegate from SC. Again I was surprised, as up to that point I had still done very little, and I did not think I deserved these appointments. I became familiar with USCF governance as a result of the Alternate Delegate's position. I was then offered a nomination for SCCA vice-president in 1978, but I had to refuse it and "retire" from organizational work until my wife finished two pregnancies and I got by my doctoral disser-

*(Colloquy continued on page 31)*



## COMPUTER SOFTWARE REVIEW

By: Henry J. White

### *Fritz 5*

Price: \$140.00

Order at [www.chessbaseusa.com](http://www.chessbaseusa.com)

I followed the Kasparov-Deeper Blue match on the Internet Chess Club. The ICC had several grandmasters giving real time commentary about the match. What astonished me the most was that each of these GMs would end his commentary by asking, "How does Fritz rate the position?" When I saw the greatest players in the world relying upon Fritz to assess their analysis, I knew that Fritz was a program I had to have. Fritz 5 costs a hefty \$140.00, but it's worth every penny.

The Fritz 5 user interface is simple and easy to use. My only complaint about the interface is that the control buttons are at the bottom of the screen and not at the top like most Windows programs.

Perhaps the best part of the user interface is the window that contains information about Fritz's thought processes. This window gives you the move Fritz is currently considering along with the best line

#### **System Requirements**

- **Windows 3.1, Windows 95 or Windows NT**
- **486 DX 66-MHz; Pentium 166 MHz recommended**
- **8 MB RAM ;32 recommended**
- **Double speed CD-ROM**
- **Windows compatible mouse**
- **SVGA 640x480, 256 video card or**

(Fritz continued on page 11)

*(Fritz continued from page 10)*

of play it has found so far. It also evaluates the position in pawn units. For instance, if the program is displaying a value of +1.30, Fritz considers the white position to be better by the equivalent of 1.3 pawns. This is the value the grandmasters were referring to during the Kasparov-Deeper Blue match.

Fritz 5 is a very strong program, having recently won the French CPU Chess Association Blitz Championship in Paris. It is the latest and strongest version of the Fritz family of chess engines. One of its predecessors, Fritz 3.10 tied for first with Kasparov in 1994 in one of the strongest blitz tournaments ever held. Fritz 3.10 won the World Computer Chess Championship in 1995, beating Deep Blue in the process. However, Fritz 5 has not yet been rated by the Swedish Chess Computer Association (SSDF). The SSDF is an independent organization dedicated to promoting chess computers and software related to chess. The SSDF maintains a widely reported rating system for chess software. The SSDF's web page is located at [www.home3.swipnet.se/~w-36794/ssdf](http://www.home3.swipnet.se/~w-36794/ssdf).

The Fritz 5 program is very versatile, allowing you to run other chess engines like Hiarcs, which currently is the SSDF's top rated program and a Kasparov favorite. In January the engine for Junior, which just won the world computer championship, will be available.

The calculating power of Fritz 5 is measured by what the program calls the "FritzMark." This is a test the program will run to determine the chess specific performance of your computer hardware. I run Fritz 5 on a Pentium MMX 180 MHz and achieved a FritzMark of 110, which means the program generates and evaluates 197,000 positions per second. The faster

*(Fritz continued on page 12)*

*(Fritz continued from page 11)*

your computer, the higher the FritzMark. Running Fritz 5 on a Pentium MMX 300 MHz is a frightening thought.

Fritz 5 has an amazing opening book of over one million opening positions. This opening book is organized in the form of a tree that tells you at a glance how often a particular move was played in grandmaster play and how successful it was. This tree is an amazing tool for studying openings. You can view a page from the tree at [www.chessbase.com](http://www.chessbase.com).

Along with the incredible chessplaying engine, Fritz 5 has a database of over 300,000 games, many of them annotated. You can search this database by a variety of criteria including opening and position. You can also build your own databases and collect games off the internet in a variety of formats.

One of the most amazing features of Fritz 5 is its ability to analyze games. It's like having a GM review your games. The following are two South Carolina games analyzed by Fritz 5. All the analysis and commentary is by Fritz 5.

**W: Bovay,B (1963) - B: Williams,W (2198) [E83]**

1997 State Championship

[Annotated by Fritz 5.00 (200s)]

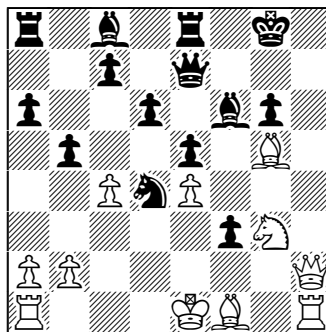
**1. d4 ♟f6 2. c4 g6 3. ♟c3 ♙g7 4. e4 d6 5. f3 0-0 6. ♙e3 ♟c6 7. ♟ge2 ♞e8 [7. ... a6 8. ♟c1 e5 9. d5 ♟d4 10. ♟b3 ♟xb3 11. ♞xb3 c5 12. dxc6 bxc6 13. 0-0-0 ♞e7 14. ♞b6 ♙b7 15. g4 ♞ab8 16. h4 ♞fc8 17. h5 ♟d5 18. exd5 cxd5 19. ♞xd5 ♙xd5 20. ♟xd5 ♞e6 21. ♞a7 ♞a8 22. ♞b7 ♞ab8 23. ♞a7 ♞a8 24. ♞b7 ½-½ Timman,J-Kasparov,G/Moscow 1981] 8. ♙d2 8. ...a6 Covers b5 9. h4 h5 10. ♟d5 b5 11.**

*(Fritz continued on page 13)*

(Fritz continued from page 12)

**g4** [11.  $\Delta$ xf6+  $\Delta$ xf6 12. cxb5 axb5=] **11. ... hxc4**  
[11. ... bxc4 12.  $\Delta$ xf6+  $\Delta$ xf6 13. gxh5 gxh5 14.  
 $\Delta$ f4+-] **12.  $\Delta$ xf6+  $\Delta$ xf6** [12. ... exf6?! 13. h5 gxf3  
14.  $\Delta$ g3 gxh5 15. cxb5 axb5 16.  $\Delta$ g1=] **13. h5 gxf3**  
A strong pawn **14.  $\Delta$ g3 e5 15. hxc6 fxc6** Prevents  
intrusion on f5+h5 [15. ...  $\Delta$ xd4 16.  $\Delta$ h2! keeping  
the advantage 16. ...  $\Delta$ h4 17. gxf7+  $\Delta$ xf7 18.  
 $\Delta$ xd4=; 15. ... exd4 16. gxf7+  $\Delta$ xf7 17.  $\Delta$ f2] **16.**  
 **$\Delta$ h2** The mate threat is Qh7 **16. ...  $\Delta$ e7** [16. ...  
 $\Delta$ xd4?? the pawn must remain untouched 17.  $\Delta$ h7+  
 $\Delta$ f8 18.  $\Delta$ h6+  $\Delta$ g7 19.  $\Delta$ xg7#] **17.  $\Delta$ g5--** [ $\Delta$ 17.  
d5!?  $\Delta$ d4 18. cxb5 axb5  
19.  $\Delta$ g5] **17. ...  $\Delta$ xd4!**

a fitting end to a beautiful game [17. ...  $\Delta$ xg5??  
Black cannot capture the bishop 18.  $\Delta$ h8+  $\Delta$ f7 19.  
 $\Delta$ h7+  $\Delta$ e6 20.  $\Delta$ h3#] **18.**  
**cxb5--** [18.  $\Delta$ h4 f2+!  
Black manoeuvres into a promising position  
(18. ...  $\Delta$ xg5 19.  $\Delta$ h8+  $\Delta$ f7  
20.  $\Delta$ h7+  $\Delta$ e6 21.



Position after 17...  $\Delta$ xd4!

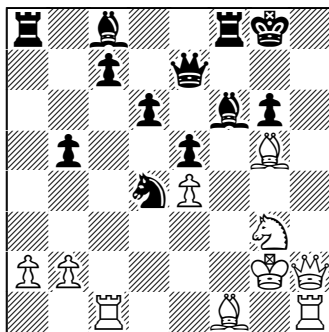
$\Delta$ h3+  $\Delta$ f5 22.  $\Delta$ xf5  $\Delta$ xh7 23.  $\Delta$ h6+  $\Delta$ e7 24.  $\Delta$ xh7+  
 $\Delta$ d8 25.  $\Delta$ f7+  $\Delta$ e7 26.  $\Delta$ xe5+  $\Delta$ f6 27.  $\Delta$ xg6+  $\Delta$ xe5  
28.  $\Delta$ xg5+  $\Delta$ xe4 29. 0-0-0  $\Delta$ e5 30.  $\Delta$ h4+  $\Delta$ g4 31.  
 $\Delta$ xg4+  $\Delta$ e3 32.  $\Delta$ d4+  $\Delta$ e2 33.  $\Delta$ d2#) 19.  $\Delta$ d1  
 $\Delta$ g4+ (19. ...  $\Delta$ xg5 20.  $\Delta$ h8+  $\Delta$ f7 21.  $\Delta$ h7+  $\Delta$ e6 22.  
 $\Delta$ h3+  $\Delta$ f5 23. exf5+  $\Delta$ d7 24.  $\Delta$ xe7+  $\Delta$ xe7 25.  $\Delta$ h7+  
 $\Delta$ d8 26.  $\Delta$ e4+-) 20.  $\Delta$ e2  $\Delta$ xe2 21.  $\Delta$ xf6  $\Delta$ f4+ 22.  $\Delta$   
c2  $\Delta$ d7 23.  $\Delta$ xf2  $\Delta$ h5+-] **18. ... axb5** [18. ...  $\Delta$ xg5??  
taking the bishop will lose the game 19.  $\Delta$ h8+  $\Delta$ f7  
20.  $\Delta$ c4+ d5 21.  $\Delta$ xd5+  $\Delta$ e6 22.  $\Delta$ h7#] **19.  $\Delta$ c1?**  
[ $\Delta$ 19.  $\Delta$ h4 f2+! Black goes into the lead 20.  $\Delta$ xf2+-]  
**19. ... f2+** [19. ...  $\Delta$ xg5?? the bishop is invulnerable  
20.  $\Delta$ h8+  $\Delta$ f7 21.  $\Delta$ h7+  $\Delta$ e6 22.  $\Delta$ h3+  $\Delta$ f5 23.  $\Delta$ xf5

(Fritz continued on page 14)

(Fritz continued from page 13)

♙d2+ 24. ♖xd2 ♗xh7 25. ♖xe8+ ♕f6 26. ♗d8+ ♖e6 27. ♖h6#] **20. ♖xf2 ♜f8**

[△ 20. ... ♜xa2!? keeps an even firmer grip 21. ♜b1 ♗f7 22. ♖g2-+] **21. ♖g2 ♖f3??±** a weak move, ruining a winning position [△ 21. ... ♜f7 Black would have gained the upper hand 22. ♗h6 ♜xa2 23. ♖xg6+ ♜g7 24. ♜h8+ ♖xh8 25. ♙xf6 ♜xb2+ 26. ♖h1 ♙g4+]



Position after 21. ♖g2

**22. ♙xf6!** White has managed to stay ahead. The mate threat is Qh8. White terminates the opponent with strong threats **22. ... ♖xh2** [22. ... ♜xf6 23. ♗h8+ ♕f7 24. ♜h7+ ♖e6 25. ♜xe7+ ♖xe7 26. ♜xc7+ ♙d7 27. ♖xa8 ♖e1+ 28. ♖h1 ♜xf1+ 29. ♖xf1 ♖d3 30. ♖g8 ♖f2+ 31. ♖g2 ♖xe4 32. ♖g7+ ♖e6 33. ♖xd7+ ♖d5 34. ♖e3+ ♖d4 35. ♖c2+ ♖d3 36. ♖h3+ ♖g3 37. ♖xg3+ ♖e2 38. ♖f2+ ♖d3 39. ♖e3#] **23. ♙xe7 ♜f7?** [△ 23. ... ♖xf1 24. ♙xf6 ♖xg3 25. ♖xg3 ♖xf8 26. ♜xc7 ♙e6+ -] **24. ♜xc7!** it's all over [24. ♖xh2?! ♜xe7 25. ♙xb5 ♙e6+ -] **24. ... ♖g4** [24. ... ♖xf1 25. ♜xf1 (25. ♖xf1?! ♙g4 26. ♜h6 ♙f3+ 27. ♖g3 ♙xe4+ -) 25. ... ♜xf1 26. ♖xf1+ -] **25. ♙xb5 ♖e3+** [25. ... ♙e6 doesn't get the cat off the tree 26. a4 ♜f2+ 27. ♖g1 ♜xb2 28. ♜h4+ -] **26. ♖g1 ♜xa2** [26. ... ♙e6 the last chance for counterplay 27. a4 ♙b3+ -] **27. ♜xc8+ ♖g7 28. ♙xd6** Threatening mate: Bxe5 **28. ... ♜a1+** **29. ♖f1** [△ 29. ♖h2 secures victory 29. ... ♖g4+ 30. ♖g2 ♖e3+ 31. ♖h3 ♜xh1+ 32. ♖xh1+ -] **29. ... ♜fxf1+** [29. ... ♜axf1+ does not save the day 30. ♙xf1 ♜xf1+ 31. ♖h2 ♖g4+ 32. ♖h3 ♜xh1+ 33. ♖xg4+ -] **30. ♙xf1** Do you see the mate threat? **30. ... ♜xf1+ 31. ♖h2**

(Fritz continued on page 15)

(Fritz continued from page 14)

**♠g4+ 32. ♖g3** Threatening mate... how?[32. ♖g3 ♜xh1 33. ♖xg4+-] **1-0.**

**W: Harden** (1995) - **B: Eubanks** (1910) [C11]

1997 State Championship,  
[Annotated by Fritz 5.00 (250s)]

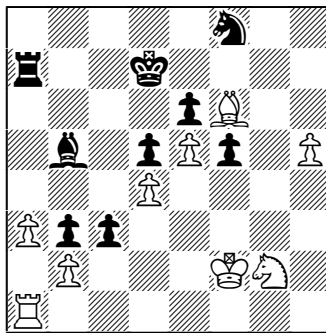
**1. e4 e6 2. d4 d5 3. ♠c3 ♠f6 4. e5 ♠fd7 5. f4** [5. ♠ce2 c5 6. f4 ♠c6 7. c3 ♜b6 (7. ... cxd4 8. cxd4 ♠b4+ 9. ♠d2 ♜b6 10. ♠f3 0-0 11. ♠xb4 ♜xb4+ 12. ♜d2 ♠b6 13. ♠c3 ♠d8 14. ♠b5 ♠d7 15. ♠d6 ♠ab8 16. ♠c1 ♜xd2+ 17. ♜xd2 Tarrasch,S-Noa,J/Hamburg 1885/1-0 (47)) 8. ♠f3 ♠e7 9. g3 f6 10. ♠h3 f5 11. 0-0 0-0 12. g4 g6 13. gxf5 gxf5 14. ♜h1 ♜h8 15. ♠g1 ♠f7 16. ♠g5 ♠xg5 17. ♠xg5 cxd4 18. ♜g1 ♠e7 19. ♠xd4 ♠f8 20. ♠f1 ♠d7 21. ♠e2 ♠fg6 22. ♜g3 ♠g8 23. b3 ♠c6 24. ♠e3 ♠xd4 25. ♠xd4 ♜a5 26. a4 a6 27. ♠g1 ♜d8 28. h4 ♜f8 29. h5 ♜h6 30. ♠f3 ♠fg7 31. ♜h2 ♠e7 32. ♠c5 ♠c6 33. ♜h4 ♠g6 34. ♠1g2 ♠e8 Duras,O-Spielmann,R/Bad Pistyan 1912/1-0 (49); 5. ♠f3 c5 6. dxc5 ♠c6 7. ♠f4 ♠xc5 8. ♠d3 f6 9. exf6 ♠xf6 10. 0-0 0-0 11. ♠e5 ♠d7 12. ♠xc6 ♠xc6 13. ♜e2 ♜e7 14. ♠ae1 ♠ae8 Spassky,B-Petrosian,T/Wch26-Moscow 1966/1-0 (68)] **5. ... a6** Covers b5 **6. ♠f3 c5** The thematic attack **7. ♠e3 ♠c6 8. ♠e2 g6 9. 0-0 b6 10. ♜d2 ♠e7 11. ♠ad1 ♠b7 12. g4 h5 13. ♠g5** [13. g5 ♠g7=] **13. ... hxg4 14. ♠xg4 ♠f5** The knight is not easily driven from f5 **15. ♠e2 ♠e7** Black should quickly conclude development. **16. c3 a5 17. ♠f2 ♠xg5** [♠17. ... cxd4!? is interesting 18. cxd4 ♠c8=] **18. fxg5 ♜c7 19. ♠xf5** [♠19. ♠df1!?= should not be overlooked] **19. ... gxf5** [Weaker is 19. ... exf5 20. ♠f4=] **20. g6** [20. ♠f4 ♠c8=] **20. ... fxg6 21. ♠g5** Traps the king in the center **21. ... ♜f7 22. ♠f4 b5 23. ♜d3 ♜c6 24. ♜g3 ♠ag8 25. ♠e1 ♜b6 26. ♠f6** Attacking the

(Fritz continued on page 16)

(Fritz continued from page 15)

backward pawn on g6 **26. ... ♖h7** **27. ♗h3 ♖e8**  
**28. ♗g5** A comfortable square for the white knight  
**28. ... ♖h5** **29. ♖e3 c4** Black gets more space **30.**  
**♗g2 ♗f8** **31. ♗h3 ♖c7** **32. ♗f4 ♖h7** **33. ♖f2**  
**♖d7** **34. ♖eg1** The pressure on the backward  
 pawn g6 grows [34. h4!?=] **34. ... b4** Black under-  
 mines the pawn chain **35. ♖e2 ♖a4** **36. cxb4**  
**axb4** **37. h4 ♗a6** **38. ♖a1** [38. ♖d1 ♖xa2 39. ♖a1  
 ♖xa1 40. ♖xa1 ♗b7=] **38. ... ♖c7** [38. ... c3 39. ♖d1  
 c2 40. ♖d2] **39. ♖d1 ♖xd1** **40. ♖xd1 ♗b5** **41.**  
**h5 ♖a7** [41. ... c3 42. bxc3 ♖xc3 43. h6=] **42. ♖a1**  
**g5** **43. ♗xg5** The passed pawn on h5 will quickly  
 become a dangerous weapon **43. ... ♖d7±** [43. ...  
 c3!? 44. bxc3 bxc3=] **44.**

**♗f6=** A beautiful  
 square! [44. ♗h6!?  
 ♖xg2+ 45. ♖xg2±] **44. ...**  
**♖xg2+** **45. ♗xg2** [45.  
 ♖xg2 c3 46. bxc3 bxc3=]  
**45. ... b3** **46. a3** White  
 gets kings attack **46. ...**  
**c3** **47. bxc3??-+** [47.  
 ♖e3 would save the  
 game 47. ... ♗c4 48. ♖c1  
 cxb2 49. ♖b1] **47. ...**



Position after 46. ... c3

**♗d3** **48. ♗g7 ♖e7** [48. ... ♗h7-+ keeps an even  
 firmer grip] **49. ♗f4 b2** **50. ♖g1 b1** **51. ♖xb1**  
**♗xb1** **52. h6?** [52. ♗xf8+ ♖xf8 53. ♗xe6+ ♖f7 54.  
 ♗d8+ ♖g7 55. e6-+] **52. ... ♖f7** [48. ... ♗h7-+ and  
 Black can celebrate victory] **53. ♗xf8 ♖xf8** **54.**  
**♗xe6+ ♖g8** **55. ♗g5 ♖xa3** **56. e6 ♖xc3??+-** in-  
 stead of simply winning the game [48. ... ♗c2-+  
 Black would have gained the upper hand] **57. h7+**  
**♖h8** [57. ... ♖g7 58. h8♖+ ♖xh8+.] **58. e7** Threat-  
 ening mate... how? **58. ... ♖c8** **59. ♗f7+!** a tough  
 check to counter **59. ... ♖xh7** **60. ♗d8 ♖c2+** **61.**  
**♖f3 ♖c3+** **62. ♖f4** [62. ♖f4 ♖e3 63. ♖xe3 f4+ 64.



## South Carolina Games

**W: Rankin,T** (1148)  
**B: Baker,D** (896) [B92]  
 1997 State Champion-  
 ship

1. e4 c5 2. ♘f3 d6 3.  
 d4 cxd4 4. ♘xd4 ♘f6  
 5. ♘c3 a6 6. ♙e2 e5 7.  
 ♘f3 ♙e7 8. 0-0 0-0 9.  
 ♙e3 ♘bd7 10. ♖d2  
 b5 11. a3 ♙b7 12.  
 ♙d3 ♖c7 13. ♖fd1  
 ♖d8 14. ♘h4 ♘xe4  
 15. ♙xe4 ♙xe4 16.  
 ♘xe4 ♙xh4 17.  
 ♖xd6 ♘f6 18. ♖xe5  
 ♖c8 19. ♖d2 ♘g4 20.  
 ♖h5 ♘xe3 21. ♖xh4  
 ♘f5 22. ♖g4 ♖a7 23.  
 ♖d5 ♘e7 24. ♖xc8  
 ♖xc8 25. ♖d3 ♖aa8  
 26. ♖ad1 h6 27. ♖c3  
 ♖e8 28. h3 ♘g6 29.  
 ♘d6 ♖e2 30. ♖f1 ♖e5  
 31. ♖c8+ ♖xc8 32.  
 ♘xc8 ♖g5 33. ♖d6  
 ♖c5 34. ♖d8+ ♖h7  
 35. c3 ♘e5 36. ♘b6  
 ♘c4 37. ♘xc4 ♖xc4  
 38. ♖d4 ♖c6 39. a4 ♖  
 g6 40. axb5 axb5 41.  
 ♖b4 ♖c5 42. ♖e2 ♖f6  
 43. ♖d3 ♖d5+ 44.  
 ♖d4 ♖xd4+ 45. ♖xd4  
 b4 46. ♖d5 bxc3 47.

bxc3 ♖e7 48. ♖c6 1-  
 0.

**W: Kammerer,J** (1338)  
**B: Rankin,T** (1148)  
 [D05] 1997 State Cham-  
 pionship

1. d4 d5 2. ♘f3 ♘f6 3.  
 e3 e6 4. c4 ♙e7 5.  
 ♘c3 0-0 6. ♙d2  
 ♘bd7 7. ♖c1 c5 8.  
 ♙d3 dxc4 9. ♙xc4  
 cxd4 10. exd4 ♘b6  
 11. ♙d3 ♘bd5 12. 0-0  
 ♘xc3 13. ♙xc3 b6 14.  
 ♙b1 ♙b7 15. ♖e1  
 ♖c8 16. a3 h6 17.  
 ♖d3 ♖d6 18. ♘e5  
 ♖d5 19. f3 ♖fd8 20.  
 ♘g4 g6 21. ♘e5 ♙d6  
 22. ♘xf7 ♖h5 23.  
 ♘xd8 ♖xh2+ 24. ♖f1  
 ♖h1+ 25. ♖e2 ♖xg2+  
 26. ♖d1 ♙xf3+ 27.  
 ♖e2 ♙xe2+ 28. ♖xe2  
 ♖xe2+ 29. ♖xe2  
 ♖xd8 30. ♙xg6 ♘d5  
 31. ♙d2 ♘f4+ 32.  
 ♙xf4 ♙xf4 33. ♖d1  
 ♖d6 34. ♙e4 h5 35. ♖  
 f3 ♙e5 36. ♖e3 h4 37.  
 ♖g1+ ♖f7 38. dxe5  
 ♖d8 39. b4 ♖h8 40.  
 b5 ♖c8 41. ♙c6 ♖g8  
 42. ♖xg8 ♖xg8 43. ♖

f4 ♖f7 44. ♜g5 h3 45. ♜h4 h2 46. ♜g5 ♜g7 47. a4 ♖f7 48. ♜h6 ♜f8 49. ♜g6 ♜e7 50. ♜g7 ♜d8 51. ♖f7 h1 ♜52. ♜xh1 ♜d7 53. ♜c6+ ♜c7 54. ♜xe6 a5 55. bxa6 1-0.

**W:** Hyder, L (2052)

**B:** Abrams, H (1929)

[E70] 1997 State Championship

1. c4 ♖f6 2. ♖c3 g6 3. e4 d6 4. d4 ♜g7 5. ♜g5 ♖bd7 6. f4 h6 7. ♜h4 0-0 8. ♜d3 e5 9. fxe5 dxe5 10. d5 ♖c5 11. ♜c2 g5 12. ♜f2 b6 13. h3 a5 14. ♖f3 ♖h5 15. ♖xe5 ♖f4 16. ♖c6 ♜f6 17. 0-0 ♖xh3+ 18. gxxh3 ♜xh3 19. ♜xc5 ♜xf1 20. ♜d4 ♜f4 21. ♜xf1 ♜xd4+ 22. ♖xd4 1-0.

**W:** McCarter, J (614) -

**B:** Willard, B (1197)

[C68]

1997 State Championship (1),

1. e4 e5 2. ♖f3 ♖c6 3. ♜b5 a6 4. ♜xc6 bxc6 5. 0-0 d6 6. d3 ♜e7 7.

♖c3 h6 8. ♜e3 ♜g5 9. ♜e1 ♜g4 10. h3 ♜xf3 11. gxf3 ♜xe3 12. fxe3 g5 13. ♜e2 h5 14. ♜ae1 g4 15. hxxg4 hxxg4 16. fxxg4 ♜h4 17. ♜h2 ♜xh2# 0-1.

**W:** Corbett, B (1889)

**B:** Hyder, L (2052) [B22]

1997 State Championship

1. e4 c5 2. c3 e6 3. d4 d5 4. exd5 exd5 5. ♖f3 ♖c6 6. ♜e3 cxd4 7. ♖xd4 ♖f6 8. ♜e2 ♜d6 9. ♖d2 ♖xd4 10. ♜xd4 0-0 11. ♖f3 ♖e4 12. 0-0 ♜e6 13. ♜c2 h6 14. ♜d3 ♖f6 15. ♜f5 ♜d7 16. ♖h4 ♖g4 17. h3 ♖e5 18. ♜xe6 fxe6 19. ♜ae1 ♖c6 20. ♖g6 ♜f7 21. ♜e2 ♜c8 22. ♜d3 ♖xd4 23. ♜xd4 ♜f6 24. ♖e5 ♜b5 25. ♜fe1 ♜c5 26. ♜d2 ♜d8 27. b4 ♜b6 28. c4 dxc4 29. ♜c3 ♜f4 30. ♜g3 ♜fd4 31. ♜g6 ♜e8 32. ♜c2 ♜c8 33. ♖g6 ♜d6 34. ♖f4 ♜f7 35. ♖xe6 ♜f6 36. ♖c5 ♜xc5 37. ♜xc4+ ♜f8 38. bxc5 ♜d4 39. ♜b5 ♜d7 40. ♜e4 ♜d5 41.

## SCCA Scholastic Report

By Michael Spohn

I had the privilege of directing two scholastic chess tournaments the past few weeks. On Nov. 8th we had 45 players from elementary to high school playing in the 7th Annual South Carolina Fall Scholastic. My congratulations to Michael Lafer Jr. for winning this event with a perfect a score of 5-0. Tim Rankin was the Middle School Champion at 4-1, while Rebecca Lemanski and William Inman were the Elementary School Champions with scores of 1-4 each. The Governor's School of Science and Mathematics scored 15 points to win the team trophy, with Spartanburg, Saluda, Sumter, C.A. Johnson and Scott's Branch close behind.

We had 39 players at the 4th Annual Gamecock Fall Scholastic, which was won by Jesse Inman with a perfect score of 5-0. We had no Middle School players at this event, but Alex Warren won 1st place Elementary with a score of 2-3. GSSM again took 1st place team honors with 14.5 points, followed closely by Spartanburg, Sumter, Crestwood, Georgetown, and Scott's Branch.

The thing that impressed me the most was that in both tournaments there were not enough Middle and Elementary players to have their own section, yet their scores were outstanding considering they played mostly High School players. Moreover, if everyone who attended the SC Fall Scholastic had attended the Gamecock Fall Scholastic, we easily could have had 70 players present. The next Scholastic Tournament will be the Lower State Championships at Sumter High School in February.

**Hope to see you there.**

# TOURNAMENT NEWS

## THE 1997 SOUTH CAROLINA CHESS CHAMPIONSHIPS

By John McCrary  
Chief Tournament Director

**R**andal Ferguson, a rated master and a well-respected gentleman, has won the title of South Carolina Chess Champion once again. Randy's 4.5-0.5 bested a 17-player section contending for the state's top honors. Norman Hammer won the title of South Carolina Amateur Champion, with a 4.5-0.5 score in that 16-player section. Gil Holmes, also with 4.5-0.5, took the title in the 22-player Reserve section. The total of 55 entrants was one of the larger recent attendances, and the Days Inn was easily the best tournament site in memory for this event. The room was large enough to accommodate all the players and even allowed plenty of elbow room at the boards, and the lighting was exceptional for the night games. The players all behaved in the usual South Carolina tradition of good sportsmanship, and there were no unpleasant incidents. The

*(News continued on page 21)*

## 17TH CHARLESTON CLASSIC

ON AUGUST 23-24, 1997, THE 17TH ANNUAL CHARLESTON CLASSIC WAS HELD IN CHARLESTON, SOUTH CAROLINA. FOR THE FIRST TIME THE FORMAT WAS A ROUND ROBIN SECTIONAL. HENRY WHITE, JAMES COLLINS, DONALD WILSON, AND JOHNNY BILLMAN WERE THE SECTION WINNERS. TWENTY-FOUR PLAYERS PARTICIPATED. LINDSAY BLANKS DIRECTED THE EVENT.



*(News continued from page 20)*

one TD's decision that was appealed was handled in an amicable manner by all concerned.

Thanks to the large turnout, the prize fund was increased from the \$750 advertised to a total of \$1,010. The format was changed from previous years thanks to the recommendations of a player committee headed by Bill Corbett. While some had reasonable concerns about certain of the changes, such as the G/90 first-round time control in the top section, there is no doubt that the tournament had more balanced numbers of players in the three sections, and ran more smoothly by the clock than before, as a result of the committee recommendations.

Special thanks go to Bill Willard and Kay McCrary, whose efficient handling of registration duties allowed the first round to start only 15 minutes late, undoubtedly a record for this event! Bill provided invaluable assistance throughout the tournament, contributing greatly to its smooth running. Michael Spohn and Lee Hyder served also as backup directors and were invaluable.

Pat Hart was unable to attend due to a family illness, but he was the recipient of a special award given at the beginning of the fifth round. Pat has been for years one of the most reliable and accurate state treasurers anywhere in the USCF. Our money is in safe hands with this man! He has been the leading figure in putting South Carolina chess "on-line" in the electronic highway called the internet, and in fact has been years ahead of most of us in that area. Add to all that his many organizational achievements, and his modest and diplomatic manner that has quieted many a potential controversy, and anyone can easily see why this award

*(News continued on page 22)*

*(News continued from page 21)*

was not only merited, but long overdue!

## **Morton wins GSSM September Open**

**By Clyde Smith**

**J**ason Morton of North Augusta won clear first place among twenty-eight players from around South Carolina who competed at the Governor's School for Science and Mathematics (GSSM) in Hartsville on September 20, 1997, in the GSSM September Open. Morton, a junior at GSSM, won four and drew once in the five round Swiss tournament. A draw with Michael Spohn of Sumter was the only blemish on Morton's record. Three players tied for second place with 4-1 scores: Michael Lafer, Jr., and Michael Lafer, Sr., of Florence and Tim King of Hartsville. Lafer, Jr., and King both lost only to Morton, the latter game a nail-biter settled with mere seconds on the clock. King dealt Lafer, Sr. his only loss. Jesse Inman of Spartanburg and Spohn finished next with 3.5 points. Spohn's only defeat came at the hands of Chris Schenck, a resident of Spartanburg who attends GSSM. This game earned Schenck the trophy for Biggest Upset (based on rating difference). Four GSSM students tied for the distinction of First Unrated with records of 3-2. They were Mark Ammons of Easley, Elizabeth Bly of Florence, Jason Harvey of Pinopolis, and Aubry Threlkeld

---

**“Nothing is so healthy as a thrashing at the proper time, and from few won games have I learned as much as I have from my defeats.”**

*J. R. Capablanca*

## From the Editor's Desk

### The man

A great sports figure is known for saying, "To be the Man, you have to beat the Man." Well, for the second year in a row, Greenville Master Randal Ferguson has won the South Carolina chess championship and continues to be "the Man". Congratulations Randal on winning your third state championship.

### Help yourself by helping me

I want to thank John McCrary and Lee Hyder for all the materials they submitted to *Palmetto Chess* this year. Interestingly, everything they submitted was unsolicited. This newsletter would be an impossible burden for me without their efforts. As former *Palmetto Chess* editors, they understand how difficult it is to publish this newsletter. While I am thankful for their support, I remain frustrated by the continued unwillingness of our membership to submit materials. I especially need annotated games. Once again, I call upon our members to send in annotated materials.

When you help others, you also help yourself. For example, it is well known that one of the best ways to improve at chess is by thoroughly analyzing your own games. So, by taking the time to annotate your own games and having the analysis published in *Palmetto Chess*, you help improve your game and at the same time make this newsletter a better publication.

*Palmetto Chess* will be published in January, April, July and October next year.

**HAPPY HOLIDAYS!!!**

## LOCAL CHESS CLUBS

### AIKEN

Contact: M. Lee Hyder, SCCA  
Vice-President  
33 Longwood Drive  
Aiken, SC 29801  
(803) 648-8924

each Thursday evening from  
7:00 PM.

Contact: Larry Thompson  
(803) 691-9339

### ANDERSON

The Blue Ridge Chess Club.  
Contact: Bill Willard  
(864) 882-7841 after 6:00 PM

### CHARLESTON

The Charleston Chess Club  
meets every Wednesday from  
7:00 PM until closing in the  
McDonald's restaurant at 1201  
Sam Rittenberg Boulevard  
(Highway 7) and Orange Grove  
Road. (I-26 Exit #216).

If you can not make it to the  
club on Wednesdays, or want to  
play at other times, drop by The  
Rainbow Cafe (282 King Street)  
in downtown Charleston and  
perhaps you can play on the big  
board!

Contact: Patrick Hart  
(path@awod.com)  
1558 Periwinkle Drive  
Mount Pleasant, SC 29464  
(803) 849-8819

### COLUMBIA

The City of Columbia Chess  
Club meets at Lorick Park, 1751  
Lorick Avenue (off North Main)

Some chessplayers have been  
meeting informally at the Barnes  
& Noble Bookstore on Harbison  
Boulevard, across from the Co-  
lumbiana Centre Mall. The  
gatherings usually occur on Sat-  
urday and Sunday afternoon.  
Monthly tournaments are also  
held. The store is one of the  
best bookstores in the state, and  
has an excellent selection of  
chess books.

278-A Harbison Blvd  
Columbia, SC 29212  
(803) 749-9009

### GREENVILLE

The Greenville Chess Club  
meets at the Bobby Pearce Cen-  
ter, 820 Townes Street Exten-  
sion, each Thursday evening  
from 7:30 PM.

Contact: Wayne Williams  
402 Berea Forest Circle  
Greenville, SC 29611  
(864) 246-6363

### GREER

*(Local Clubs continued on page 25)*



*(Local Clubs continued from page 24)*

The BMW Chess Club meets in the Employee Club of the BMW Manufacturing Corporation at 1400 Highway 101 South.

Contact: Horace Mays  
(864) 989-6000, Ext. 7334 or Fax:  
989-5861

### **HARTSVILLE**

The Hartsville Chess Club meets in Room 201 of the Center Theater, 212 N. 5th Street, each Thursday evening from 7:30 PM.

Contact: Clyde Smith  
(803) 383-3937

### **MURRELLS INLET**

The Murrells Inlet Chess Club meets at 341 Rum Gully Circle each Tuesday from 7:00 PM.

Contact: Ray Lewis  
(803) 651-8924

### **MYRTLE BEACH**

The South Strand Chess Club meets at the Surfside Civic Center each Tuesday from 7:00 PM.

Contact: William Smith  
(803) 238-0853

### **NORTH AUGUSTA**

The North Augusta Chess Club meets in the Riverview Park recreation center basement each Wednesday evening from 7:00 PM.

Contact: M. Lee Hyder, SCCA  
Vice-President  
33 Longwood Drive  
Aiken, SC 29801  
(803) 648-8924

### **ROCK HILL**

The Rock Hill Chess Club meets in the student center at York Technical College on Tuesday evening from 6:00 PM.

Contact: Pete Danker  
(803) 548-0955

### **SPARTANBURG**

The Spartanburg Chess Club meets in Mimi's Uptown Deli, 180 East Main Street, each Tuesday evening from 7:30 PM.

Contact: David Williams (864)  
573-9861; Spencer Matthews  
(864) 582-2551; club phone (864)  
585-8332

### **WOODRUFF**

The Woodruff Chess Club meets in the First Citizens Bank, corner of Pine Street & Main Street, each Monday evening from 7:00 PM.

Contact: Lloyd Angel  
(864) 476-7860

## SOUTH CAROLINA'S CHESS CHAMPIONS

|                            |                      |
|----------------------------|----------------------|
| 1926:Dr. W.H. Morton       | Lee Hyder            |
| 1927:James Henry Rice, Jr. | James Addison        |
| 1928:Col. Oliver J. Bond   | 1976:Fred Alsbrook   |
| 1929:B.O. Johnson          | 1977:Paul Tinkler    |
| 1930:E.B. Hallman          | 1978:Lee Hyder       |
| 1931:Edward L. Dashiell    | 1979:Edward McCauley |
| 1932:P.J. Walker           | Richard Cohen        |
| 1933:Edward L. Dashiell    | Patrick Hart         |
| 1948:Harold A. Mouzon, Jr. | 1980:Klaus Pohl      |
| 1949:Paul L. Cromelin      | 1981:Jeff Smeltzer   |
| 1950:Harold A. Mouzon, Jr. | 1982:Klaus Pohl      |
| 1951:Paul L. Cromelin      | 1983:Klaus Pohl      |
| 1952:Alex Edelsburg        | David Erb            |
| 1953:Rea B. Hayes          | Joseph Zeimet        |
| 1954:Rea B. Hayes          | 1984:Wayne Williams  |
| 1955:Ernest E. Hoenck      | 1985:Thomas Krause   |
| 1956:Lanneau L. Foster     | Klaus Pohl           |
| Alex Edelsburg             | Wayne Williams       |
| 1957:R. Grady Brown        | 1986:Klaus Pohl      |
| 1958:R. Grady Brown        | 1987:Dennis Fish     |
| 1959:Harold A. Mouzon, Jr. | Randal Ferguson      |
| 1960:Peter Grant           | Wayne Williams       |
| Lanneau Foster             | 1988:Klaus Pohl      |
| Alex Edelsburg             | 1989:Wayne Williams  |
| 1961:John G. Wallenburg    | Lee Hyder            |
| 1962:Lanneau L. Foster     | Doug Holmes          |
| 1963:Dr. Steven Shaw       | 1990:Charles Walter  |
| 1964:Lee Hyder             | Dennis Fish          |
| 1965:John A. Chalmers      | Mark Brodie          |
| Alex Edelsburg             | Jimmy Hill           |
| 1966:Lee Hyder             | 1991:Klaus Pohl      |
| 1967:Lee Hyder             | 1992:Klaus Pohl      |
| Alex Edelsburg             | Lindsay Blanks       |
| 1968:Lee Hyder             | 1993:Philip Laren    |
| 1969:Spencer Matthews      | Klaus Pohl           |
| 1970:Charles Walter        | 1994:Lindsay Blanks  |
| 1971:Otto Estenger         | 1995:Wayne Williams  |
| 1972:Otto Estenger         | Pat Hart             |
| Charles Walter             | 1996:Randal Ferguson |
| 1973:Jeff Smeltzer         | 1997:Randal Ferguson |
| Charles Walter             |                      |
| 1974:Charles Walter        |                      |
| 1975:Jeff Smeltzer         |                      |

*(President continued from page 3)*

compete in a separate room to reduce any possible disturbances that our younger competitors might unintentionally make. As always, anyone can play in our regular sections as they have in the past. Let me assure you the priority here is to promote and enhance our State Championship, not to make it into a scholastic tournament.

We need to revive the South Carolina Open Championship, and I'm calling for a volunteer to organize the event. If you are interested, please let me know at the earliest possible date so that we can restore this event to our calendar.

Everyone wants us to increase the number of tournaments in our state. This is not an easy issue to address and is related to the previous problem, our Open Championship. At this time we simply do not have enough people to organize any more events. For the larger tournaments it is almost impossible to be the organizer and the tournament director as well. It is my intention to attack this problem the same way we have approached our scholastic chess program, which is growing at a tremendous rate.

First, we need to focus on the tournaments we have now and strengthen them. Second, we need to find people who are willing to organize tournaments. Third, we need to increase our pool of tournament directors. Lastly, with this started, we can then look at creating new tournaments.

We currently have eleven solid scholastic tournaments. This will help us in the future. In contrast, we have only four regular tournaments: the Snowstorm and Classic in Charleston, the state closed in Columbia, and the state open in Greenville. Most of our clubs host

*(President continued on page 28)*

*(President continued from page 27)*

smaller tournaments at one time or another. What I would like to do is create a list of up-coming tournaments so that our players are better advised of when and where the next tournament will be. It is my hope to eventually have one tournament each month somewhere in South Carolina. These tournaments must be annual. In this way, all one has to do is think what month it is and they will have a good idea of where to go and when. That is the big key. Otherwise, turnout for our tournaments will always be low. One of our local chess clubs, the Rock Hill Chess Club, is thinking in this fashion. They have a nice format for a new tournament in the early spring time frame. They are committed to doing it not only for this year, but in the years to come. Keep your eyes and ears open for this one.

**Your opinions, views and comments are important and welcome. You can contact me at the ad-**

---

*(Hyder continued from page 5)*

I picked up another line from a book by a chap named G. Gunderam, titled (in German) *New Ways in the Openings*. I used it in skittles for a while, but before trying it in tournaments I kept looking at it until I found the line I didn't like. This was a variation of the Philidor which went **1. e4 e5 2. Nf3 d6 3. d4 Qe7!?**. Routine play by White lets Black consolidate and advance on the kingside with a considerable attack. However, after some home analysis I found **4. dxe5 dxe5 5. b3!**, which leaves Black with some permanent problems after, for example **5... Nc6 6. Ba3 Qf6 7. Bxf8**. It may be tenable, but it isn't fun, and so I abandoned it.

What made me think of all this is the May 12 issue of *Inside Chess*, in which a chap by the name of Richard

*(Hyder continued on page 29)*

*(Hyder continued from page 28)*

Moody took out a half page ad in order to publicize his ideas, *Chess for the 21st Century*. Moody also likes to play his queen to the e-file, but with White, and so plays Qe2 in many positions before his f1 bishop is out. This sort of thing has a respectable pedigree: Chigorin played Qe2 as his second move against the French Defense on occasion. But Moody claims an advantage from these lines. Although I doubt that I will every play (or meet) Moody, who lives in the state of New York, it is fun to see what one could play against lines such as: **1. e4 e5 2. Nf3 d6 3. Qe2!?**. Now Moody gives **3...Nc6 4. c3 Bg4 5. Qe3**, and claims an advantage that just isn't there after **5...g6!**, when Black takes over the initiative. Or consider: **1. e4 Nc6 2. c4 e5 3. f4**, where Moody claims an advantage after **3...exf4 4. d4**. But after **3...Bc5**, we have a very good line for Black of the king's gambit declined. Or consider this Sicilian line: **1. e4 c5 2. Nf3 d6 3. d4 cxd4 4. Nxd4 Nf6 5. Nc6 g6 6. Bd3 Bg7 7. Nce2 Nc6 8. c3**, where Moody concludes "with advantage because Black's bishop is dead." Of course, after **8...O-O 9. O-O d5** we have another situation, summarized by Reuben Fine: "If Black can play d5 in the Sicilian without disadvantage, he has equalized." That looks good here, too.

Not everything Moody found is questionable. He suggested in the Center Counter the following line: **1. e4 d5 2. exd5 Nf6 3. c4 c6 4. dxc6 Nxc6 5. f4!?** to prevent e5. Not bad, though after **5...e5 6. fxe5 Ng4 7. Be2 Nxe5 8. Nc3 Bf5** Black still has some compensation for the pawn.

Finally, Moody analyzed a line in the French which I had looked at it earlier: **1. e4 e6 2. d4 d5 3. e5 c5 4. f4!?**. Now Moody gives **4...cxd4 5. Nf3** "with advantage".

*(Hyder continued on page 30)*

*(Hyder continued from page 29)*

This is one that will perhaps require testing to evaluate, but most French players will feel happy after **5...Nc6 6. Nxd4 Bc5 7. c3 Nge7**.

There are lessons here: some original ideas are good, but a lot aren't. Many of them may be good against an opponent seeing them for the first time, but there's a risk he'll find something you haven't. Most of all, there is no substitute for critical analysis, and for best

---

*(Delegates continued from page 7)*

Other parts of the Blue-ribbon proposal would have reduced the size of the Board of Delegates and other changes.

I favored parts of this proposal, but not other parts. It seemed logical to me therefore to identify and pass the best elements of the plan, and scrap the not-so-good parts, in a compromise approach. What I found, however, was that some Delegates wanted to scrap the *whole* plan because they did not like some of its parts! Given that attitude, plus the complexity of the entire proposal, we seemed likely to have a chaotic meeting which would wind up accomplishing nothing. I then decided to make myself into a "bridge" person who could get different factions talking to each other, rather than just among themselves, in order to facilitate the forging of a compromise proposal. I was a good candidate for this "bridging" function, because I have managed to avoid squabbles and maintain friendships that span the different factions that run through the Delegates. To my pleasant surprise, my "bridging" function did contribute to the Delegates achieving an orderly compromise on the Blue-ribbon proposal.

**The USCF Code of Ethics** was revised, with myself

*(Delegates continued on page 31)*

*(Delegates continued from page 30)*

as the principal author of that revision. The main idea of the revision was to clarify the sometimes ambiguous wording of the previous code. I also authored a totally new code, which set standards of conduct for the Policy Board of the USCF. The top seven officers of the USCF constitute this board. The last three Policy Boards have been notoriously dysfunctional, wrapped up in political squabbles that have been carried to incredible lengths. In authoring this code, I merely listed mistakes that past Boards had made, and summarized the proper behaviors into a few general principles. Part of my idea was to create a basis by which recall of Board members might be done in the future, since a recall method is being written into the blue-ribbon changes.

**The World Championship** was the subject of another of my motions. In a nutshell, it establishes that the USCF may no longer recognize Kasparov's title after one more year, if it is not based on a *bona fide* world chess organization, which the PCA has never really become. That motion was another in a series of motions pertaining to preserving the world championship, which I have authored each year since 1994.

In all, it was a meaningful year for change in USCF

---

*(Colloquy continued from page 9)*

tation and my mother's death from cancer. I returned to organized chess in January 1983, and the moment I walked in the club door I was appointed editor of the *SCCA News* by president Bill Floyd; Lee Hyder had just resigned the position! In 1984, I went to my first USCF Delegates' meeting, and remained active since then as Delegate. I was elected to the first of my eight

*(Colloquy continued on page 32)*

*(Colloquy continued from page 31)*

presidential terms in 1987.

**Palmetto Chess:** What are the major changes you've seen in the SCCA over the years?

**McCrary:** Of course, our dynamic scholastic program is the biggest change, as scholastic chess was completely dormant in this state when I became president in 1987. I have done little personally in that area except to use the resources of the SCCA to support our scholastic organizers: Doug Holmes, Bill Corbett, Wayne Williams, Clyde Smith, Michael Spohn, Dean Roesner, and Henry White, to name a few. Another change in the SCCA is that our top players have become stronger; I organized the tourney in 1978 that produced our first rated master. We have created the titles of state high-school individual champion and state correspondence champion. One thing that has not changed, I am proud to say, is the high ethical standards of our players. The non-competitive draw is rarer in this state than virtually anywhere else.

**Palmetto Chess:** Please describe the positions you currently hold in the USCF?

**McCrary:** I now hold ten different national positions within the USCF. I chair three national committees; no other person in the USCF chairs more than one. I chair the FIDE Advisory Committee, which includes GM Yerlominsky, GM Arnold Denker, IM John Donaldson, and Carol Jarecki, (arbiter of the Kasparov matches), among its membership. I also chair the Ethics Committee and the Hall-of-Fame Committee. I also belong to the Historian's Committee, the Outreach Committee, and the Bylaws Committee. I am a Trustee of the US Charitable Chess Trust, as well as secretary and a vice-president of the Trust. I am Delegate from South Caro-

*(Colloquy continued on page 33)*



*(Colloquy continued from page 32)*

lina to the USCF. Each of these ten positions has distinct duties. In the past year, I also acted as a special consultant and a sort of temporary ombudsman for USCF personnel issues. My Hall-of-Fame Chairmanship has allowed me to make a number of famous friends. For example, just tonight I received a personal, hand-written Christmas message from Arthur Dake, the world's oldest living grandmaster.

**Palmetto Chess:** Why have you volunteered so much of your time to the SCCA and USCF?

**McCrary:** I enjoy both the sense of accomplishment and the creative challenges. There is nothing "routine" about leadership positions at any level in chess; each leader creates his own program and leaves the stamp of his individual creativity on the job. It is that constant creative challenge that I find very stimulating.

**Palmetto Chess:** You are South Carolina's first correspondence champion. Have your many volunteer activities detracted from you ability to play in either over the board or postal tournaments?

**McCrary:** I have been a correspondence specialist for years, (currently rated 2010), as I was never satisfied with my OTB games even when I won. At present, though, I am hesitant to resume correspondence play because I fear that I no longer have time. By the way, I recently had the pleasant surprise of finding one of my correspondence wins published in the new book, *Castling To Win*.

**Palmetto Chess:** As the SCCA and USCF approach the new millennium, what are the greatest challenges you see ahead?

**McCrary:** There are millions of casual players now, but we have not bridged the gap at all to get them into

*(Colloquy continued on page 34)*

(Colloquy continued from page 33)

organized chess. We must make more aggressive use of the many new media opportunities, particularly at the national level, to encourage membership, then we must offer attractive and varied services to keep them in once they join. That is a short description of a huge topic.

**Palmetto Chess:** You have an international reputation as a chess historian. I even noticed your name appears in the 1992 *Oxford Companion to Chess* under the entries for “tournament” and “Benjamin Franklin.” Over the years you’ve also written many historical pieces for *Palmetto Chess*. What other historical work have you done, and how did you develop this interest in chess history?

**McCrary:** I am cited in the new book by Soltis and McCormick on the history of the US Championship, 1845-1996, and in several other books. I have published close to 20 articles in *Chess Life* over the years, and was cited in British Chess Magazine several times in the 1980’s. There is an interesting connection between my interest in chess history and the best-selling book, *Midnight in the Garden of Good and Evil*. One of the houses mentioned in that book is the Hamilton-Turner mansion in Savannah. Back in 1963, my sister lived in that mansion as a renter! She and Ms. Turner were for a while the only occupants of that spooky old place. Around March of 1963, when I was 14, my parents and I spent a weekend visit there. I happened upon a copy of *The Golden Treasury of Chess* in a Savannah drugstore while on the trip. I remember vividly taking it back to the mansion and reading its historical chapter introductions and going through its old games. My interest in chess history really caught fire in Savannah

(Colloquy continued on page 38)

**Charleston Classic XVII**  
**August 23-24, 1997**  
**TD-Lindsay Blanks**  
**Sectional Round Robin**

| Player             | Rating | 1  | 2 | 3 | 4 | 5 | 6 | Total |
|--------------------|--------|----|---|---|---|---|---|-------|
| 1. Douglas Holmes  | 1992   | X  | 1 | 1 | ½ | 0 | ½ | 3.0   |
| 2. Brenton Bovay   | 1963   | 0  | X | ½ | 0 | ½ | ½ | 1.5   |
| 3. Melvin Hammer   | 1900   | 0  | ½ | X | ½ | 0 | ½ | 1.5   |
| 4. Keith Eubanks   | 1846   | ½  | 1 | ½ | X | 0 | 1 | 3.0   |
| 5. Henry White     | 1839   | 1  | ½ | 1 | 1 | X | 0 | 3.5   |
| 6. D. DiMantova    | 1811   | ½  | ½ | ½ | 0 | 1 | X | 2.5   |
|                    |        |    |   |   |   |   |   |       |
| 1. Daniel Sheaf    | 1734   | X  | 0 | 1 | 0 | 0 | 1 | 2.0   |
| 2. James Collins   | 1651   | 1  | X | 1 | ½ | 1 | 1 | 4.5   |
| 3. Michael Will    | 1595   | 0  | 0 | X | 1 | ½ | 1 | 2.5   |
| 4. John Crawford   | 1521   | 1  | ½ | 0 | X | 0 | 1 | 2.5   |
| 5. Robert Osbourne | 1502   | 1  | 0 | ½ | 1 | X | 0 | 2.5   |
| 6. Thomas Greene   | 1476   | 0  | 0 | 0 | 0 | 1 | X | 1.0   |
|                    |        |    |   |   |   |   |   |       |
| 1. John Loy        | 1452   | X  | ½ | 0 | 1 | 0 | 1 | 2.5   |
| 2. Donald Wilson   | 1471   | ½  | X | 1 | 1 | 1 | 0 | 3.5   |
| 3. Anthony Brown   | 1419   | 1  | 0 | X | ½ | 0 | 1 | 2.5   |
| 4. William Pilaud  | 1412   | 0  | 0 | ½ | X | 1 | 0 | 1.5   |
| 5. Clyde Baker     | 1401   | 1  | 0 | 1 | 0 | X | 1 | 3.0   |
| 6. Raymond Roberts | 1336   | 0  | 1 | 0 | 1 | 0 | X | 2.0   |
|                    |        |    |   |   |   |   |   |       |
| 1. Connie Le Crow  | 1331   | X  | 1 | 0 | 1 | 1 | 1 | 4.0   |
| 2. Joseph Feiler   | 1198   | 0  | X | 0 | 1 | 1 | 1 | 3.0   |
| 3. Johnny Billman  | 1130   | 1. | 1 | X | ½ | 1 | 1 | 4.5   |
| 4. Brian Neilson   | 929    | 0  | 0 | ½ | X | 0 | 0 | 0.5   |
| 5. Paul Sandefur   | 871    | 0  | 0 | 0 | 1 | X | 1 | 2.0   |
| 6. Brian Roach     | UNR    | 0  | 0 | 0 | 1 | 0 | X | 1.0   |

## Hartsville September Open

### September 20, 1997

| Player                  | Rating | 1   | 2   | 3   | 4   | 5   | Total |
|-------------------------|--------|-----|-----|-----|-----|-----|-------|
| 01. Jason G. Morton     | 1162   | W27 | W22 | W2  | D6  | W4  | 4.5   |
| 02. Michael Lafer       | 1393   | W21 | W17 | L1  | W16 | W8  | 4.0   |
| 03. Michael B. Lafer    | 1224   | W23 | W9  | W14 | L4  | W13 | 4.0   |
| 04. Timothy W. King     | 1200   | W13 | W18 | W8  | W3  | L1  | 4.0   |
| 05. Jesse Inman         | 1367   | H   | L14 | W25 | W10 | W12 | 3.5   |
| 06. Michael Spohn       | 1268   | W16 | L8  | W12 | D1  | W15 | 3.5   |
| 07. Maurice Watkins     | 1165   | L12 | W21 | L11 | W26 | W18 | 3.0   |
| 08. Christopher Schenck | 916    | W24 | W6  | L4  | W11 | L2  | 3.0   |
| 09. Ben A. Bruce        | 838    | W10 | L3  | L13 | W19 | W17 | 3.0   |
| 10. Mark S. Ammons      | Unr.   | L9  | W23 | W18 | L5  | W25 | 3.0   |
| 11. Elizabeth Bly       | Unr.   | L17 | W24 | W7  | L8  | W20 | 3.0   |
| 12. Jason D. Harvey     | Unr.   | W7  | W19 | L6  | W17 | L5  | 3.0   |
| 13. Aubry Threlkeld     | Unr.   | L4  | W28 | W9  | W14 | L3  | 3.0   |
| 14. Chad N. Warren      | 1108   | W25 | W5  | L3  | L13 | D16 | 2.5   |
| 15. Benjamin Sykes      | Unr.   | H   | L27 | W23 | W24 | L6  | 2.5   |
| 16. David E. Smith      | Unr.   | L6  | W26 | W20 | L2  | D14 | 2.5   |
| 17. Walter Altman       | 956    | W11 | L2  | W27 | L12 | L9  | 2.0   |
| 18. Thea J. Warringer   | 817    | W26 | L4  | L10 | W21 | L7  | 2.0   |
| 19. Ponnoreay Pich      | Unr.   | H   | L12 | D21 | L9  | W27 | 2.0   |
| 20. Jarrett Dunn        | Unr.   | H   | D25 | L16 | W27 | L11 | 2.0   |
| 21. James E. Lambert    | 782    | L2  | L7  | D19 | L18 | W28 | 1.5   |
| 22. Frederick Haynes    | 707    | H   | L1  | L24 | L25 | W26 | 1.5   |
| 23. Sara Ann Lemanski   | 580    | L3  | L10 | L15 | W28 | D24 | 1.5   |
| 24. Roby Pavlakovich    | Unr.   | L8  | L11 | W22 | L15 | D23 | 1.5   |
| 25. Christopher Kettrey | Unr.   | L14 | D20 | L5  | W22 | L10 | 1.5   |
| 26. Michael A. Bishop   | Unr.   | L18 | L16 | W28 | L7  | L22 | 1.0   |
| 27. Taylor R. Bunn      | Unr.   | L1  | W15 | L17 | L20 | L19 | 1.0   |
| 28. Robbie M. Odam      | Unr.   | H   | L13 | L26 | L23 | L21 | 0.5   |

# 1997 SC CHAMPIONSHIPS

## October 18-19, 1997

### TD-John McCrary

#### Championship Section

| Player                | Rating | 1   | 2   | 3   | 4   | 5   | Total |
|-----------------------|--------|-----|-----|-----|-----|-----|-------|
| 01. Randal Ferguson   | 2251   | W17 | W4  | W2  | W9  | D3  | 4.5   |
| 02. Gary B. Hardin    | 1995   | W14 | W10 | L1  | D12 | W4  | 3.5   |
| 03. Brenton Bovay     | 1906   | W5  | D11 | D9  | W10 | D1  | 3.5   |
| 04. Kyle Oody         | 1900   | X   | L1  | W6  | W11 | L2  | 3.0   |
| 05. Wayne Williams    | 2198   | L3  | D12 | W15 | D8  | D10 | 2.5   |
| 06. Lee Hyder         | 2052   | W13 | L9  | L4  | W14 | D8  | 2.5   |
| 07. Gregory Frady     | 2024   | F   | W14 | L10 | W15 | D11 | 2.5   |
| 08. Doug Holmes       | 1956   | L11 | W13 | H   | D5  | D6  | 2.5   |
| 09. Claude Corbett    | 1894   | F   | W6  | D3  | L1  | W12 | 2.5   |
| 10. Keith Eubanks     | 1866   | W15 | L2  | W7  | L3  | D5  | 2.5   |
| 11. John Dusky        | 1840   | W8  | D3  | D12 | L4  | D7  | 2.5   |
| 12. Patrick Harley    | 1769   | B   | D5  | D11 | D2  | L9  | 2.5   |
| 13. Harry Abrams      | 1929   | L6  | L8  | L14 | W16 | W15 | 2.0   |
| 14. Winston Reed      | 1883   | L2  | L7  | W13 | L6  | B   | 2.0   |
| 15. Dominic DiMantova | 1823   | L10 | W17 | L5  | L7  | L13 | 1.0   |
| 16. Curtis Graham     | 2030   | U   | U   | U   | L13 | U   | 0.0   |
| 17. Lindsay Blanks    | 1986   | L1  | L15 | U   | U   | U   | 0.0   |

#### Amateur Section

| Player                    | Rating | 1   | 2   | 3   | 4   | 5   | Total |
|---------------------------|--------|-----|-----|-----|-----|-----|-------|
| 01. Melvin Hammer         | 1733   | W16 | W10 | W3  | D2  | W6  | 4.5   |
| 02. Michael Lafer         | 1379   | W11 | W14 | W9  | D1  | D3  | 4.0   |
| 03. Fred Olmsted          | 1625   | W15 | W6  | L1  | W5  | D2  | 3.5   |
| 04. Pat McCartney         | 1414   | D14 | W15 | L5  | W11 | W8  | 3.5   |
| 05. Randall Altman        | 1446   | W8  | D9  | W4  | L3  | D10 | 3.0   |
| 06. John Loy              | 1444   | W7  | L3  | W12 | W10 | L1  | 3.0   |
| 07. George Williams       | 1711   | L6  | L8  | D14 | W16 | W12 | 2.5   |
| 08. James "Clubber" Hyatt | 1670   | L5  | W7  | H   | W9  | L4  | 2.5   |
| 09. John Rogers           | 1588   | W13 | D5  | L2  | L8  | W14 | 2.5   |
| 10. Pete Danker           | 1477   | W12 | L1  | W13 | L6  | D5  | 2.5   |
| 11. John Roberts          | 1475   | L2  | L13 | W16 | L4  | W15 | 2.0   |
| 12. John Brown            | 1366   | L10 | W16 | L6  | W13 | L7  | 2.0   |
| 13. James Smith           | 1365   | L9  | W11 | L10 | L12 | W16 | 2.0   |
| 14. Brian Hastings        | 1589   | D4  | L2  | D7  | D15 | L9  | 1.5   |
| 15. Andrew Jackson        | 1441   | L3  | L4  | B   | D14 | L11 | 1.5   |
| 16. William Pilaud        | 1429   | L1  | L12 | L11 | L7  | L13 | 0.0   |

### Reserve Section

| Player               | Rating | 1   | 2   | 3   | 4   | 5   | Total |
|----------------------|--------|-----|-----|-----|-----|-----|-------|
| 01. Gil Holmes       | 1360   | W9  | W19 | W4  | W5  | D3  | 4.5   |
| 02. Jackson Kammerer | 1351   | W10 | L4  | W8  | W13 | W6  | 4.0   |
| 03. David Biggs      | 1324   | W11 | W14 | D5  | W7  | D1  | 4.0   |
| 04. Michael B. Lafer | 1233   | W13 | W2  | L1  | W11 | D7  | 3.5   |
| 05. Ralph Sandifer   | 1336   | W22 | W18 | D3  | L1  | D8  | 3.0   |
| 06. Billy Pattillo   | 1285   | L12 | W20 | W9  | W15 | L2  | 3.0   |
| 07. Michael Spohn    | 1261   | W15 | D8  | W12 | L3  | D4  | 3.0   |
| 08. Tim Rankin       | 1148   | W16 | D7  | L2  | W12 | B5  | 3.0   |
| 09. Kenny Matthews   | 1070   | L1  | W17 | L6  | W18 | W15 | 3.0   |
| 10. Ronnie Farmer    | 1107   | L2  | D12 | L13 | W21 | W16 | 2.5   |
| 11. Drew Tweito      | 1042   | L3  | W21 | W18 | L4  | D13 | 2.5   |
| 12. David Baker      | 896    | W6  | D10 | L7  | L8  | W17 | 2.5   |
| 13. Joe Griffin      | Unr    | L4  | W22 | W10 | L2  | D11 | 2.5   |
| 14. Bill Willard     | 1197   | W21 | L3  | L15 | L16 | W18 | 2.0   |
| 15. Paul Sandefur    | 884    | L7  | W16 | W14 | L6  | L9  | 2.0   |
| 16. Saul O' Conner   | Unr    | L8  | L15 | W20 | W14 | L10 | 2.0   |
| 17. Randy Soles      | Unr    | L19 | L9  | H   | W20 | L12 | 1.5   |
| 18. James Lord       | 1242   | W20 | L5  | L11 | L9  | L14 | 1.0   |
| 19. Chuck Cameron    | 1155   | W17 | L1  | U   | U   | U   | 1.0   |
| 20. Jennifer Dusky   | 657    | L18 | L6  | L16 | L17 | W21 | 1.0   |
| 21. Joey McCarter    | Unr    | L14 | L11 | X   | L10 | L20 | 1.0   |
| 22. Thomas Perryman  | 1075   | L5  | L13 | F   | U   | U   | 0.0   |

---

*(Colloquy continued from page 34)*

that weekend. In 1975, while a student at Georgia, I accidentally discovered a complete set of *The Illustrated London News* while looking for something else. I recognized it as having the old columns of Howard Staunton from the 1840's, and I began reading reading them all. Very shortly thereafter, my wife and I visited her sister at Penn State. I met IM Donald Byrne there, and he put me in touch with a bookseller who had many very old chess books. I was a serious historian from then on.

**Palmetto Chess:** Finally, do you have any advice for

## 1998 Scholastic Tournaments

- ♣ **4th Annual GSSM Winter Classic**, January 17, 1998, at the Governor's School for Science and Mathematics in Hartsville, South Carolina on the Coker College campus. Contact Dr. Clyde Smith (803) 383-3937.
- ♣ **South Carolina Scholastic Chess State Championship**, Airport High School in Columbia, South Carolina, Saturday, March 7, 1998. 5 round swiss; \$5.00 entry fee. Registration 8:25-9:00 am. Rounds 9:30, 10:45, 1:00, 2:15, and 3:30. Trophies to 1st, 2nd, and 3rd individual High School; 1st and 2d Middle School; 1st and 2d Elementary School and 1st and 2d High School team trophy. The top eight (8) finishers in the high school section will qualify for the South Carolina High School Championship. USCF membership required. Send all inquiries to SCCA President Michael Spohn (address on back cover).
- ♣ **South Carolina High School Chess Championship**, Sumter High School, Sumter, South Carolina. Date and time to be announced (a tentative date is March 21, 1998). 3 round swiss; invitations only to the top eight (8) qualifiers from the SC Scholastic Championships. Registration 9:00. Rounds 9:30, 1:00, 3:30. Trophies to 1st, 2nd, and 3rd. Contact SCCA President Michael Spohn (address on back cover).
- ♣ **South Carolina Scholastic Quick Chess State Championship**, Sumter High School, Sumter South Carolina, Saturday, April 25, 1998. 5 or 6 round swiss; G10. \$5.00 entry fee. Registration 8:25-9:00. Rounds 9:30, 10:00, 10:30, 11:00, 11:30, and 12:00. Trophies to 1st, 2nd, and 3rd individuals and 1st place team trophy. USCF membership required.
- ♣ **1st Annual Sumter County Scholastic Championship**, Sumter High School, Sumter, South Carolina. Date and time to be announced (a tentative date is Saturday, May 2, 1997). 5 round swiss. \$5.00 entry fee. Registration 8:25-9:00. Rounds 9:30, 10:45, 1:00, 2:15, 3:30. Trophies to 1st, 2nd, and 3rd individual High School, 1st and 2nd Middle School and 1st and 2nd Elementary School and 1st and 2nd High School team trophy. Only Sumter County residents or natives are eligible to win 1st place, including the team award.

*Palmetto Chess* is published quarterly by the South Carolina Chess Association, a non-profit membership organization that organizes and promotes chess competition in South Carolina. It is the US Chess Federation's official state affiliate chapter for South Carolina. Entire contents © 1997 by the South Carolina Chess Association. All rights reserved. Any reproduction in whole or in part, without the written permission of the South Carolina Chess Association, is prohibited.

**Membership is \$8 per year, or \$3 for juniors under age 19.**

Officers of the South Carolina Chess Association are:

President- **Michael Spohn**, 6855 Peach Orchard Road, Dalzell 29040

Vice President- **Henry J. White**, 320 Whitehurst Way, Columbia 29229 E-mail d4nf6@aol.com

Secretary- **Bill Willard**, 506 West North 4th Street, Seneca 29678 E-mail bwillard@carol.net

Treasurer- **Pat Hart**, 1558 Periwinkle Drive, Mount Pleasant 29464 E-mail path@awod.com

*Palmetto Chess* is edited by:

**Henry J. White**, 320 Whitehurst Way, Columbia 29229 E-mail d4nf6@aol.com

**Palmetto Chess**  
**320 Whitehurst Way**  
**Columbia, SC 29229**