

Palmetto Chess

Published by the South Carolina Chess Association

July 1999



SCCA Tournaments
Charleston Classic XIX
Charleston, SC
August 21-22

SC Championships
Columbia, SC
October 30-31

Volume 34, Number 3

TABLE OF CONTENTS

The President's Page.....	3
The View From "C" Level.....	4
Lucky PET	6
Tournament News.....	8
Attacking the Uncastled King.....	10
From the Editor's Desk.....	12
South Carolina Games	13
Cross Tables.....	16
Upcoming Events.....	18

"If you ever get belted and see three fighters through a haze, go after the one in the middle. That's what ruined me — I went after the two guys on the end."

Max Baer, Heavyweight boxer

"I wasn't sure what square to take the rook to. Because there were three alternatives (c8, d8, and e8), I decided to go for the middle one."

Jan Timman, NIC 1998 No.2

The President's Page

By Michael Spohn

SCCA President

Greetings everyone. I hope you had an enjoyable July 4th. I have good news to share. In the previous issue I mentioned that we would have to consider raising our membership fees by a large amount. I am pleased to say that we will only have to look at a

\$2.00 increase. Henry will provide the details in this issue of *Palmetto Chess*. Please take a look at what your officers are proposing. Pat and Henry have made some costs saving moves that will allow only a \$2.00 increase while still providing a good product. Remember that this will be voted on at the next annual meeting held during the SC

State Championships this October 30-31st.

Pete Danker did a tremendous job organizing and assisting me in directing the SC Open on June

11-13th in Rock Hill. He had all sorts of nice door prizes for our players, and he found solutions to the

unexpected things that crop up during a major tournament. I owe Pete a personal "thank you" for how he handled a tired and grumpy TD (yours truly) who was worn out before the SC Open even started. My hat is off to him and his club for what they have accomplished in Rock Hill with very little fanfare or

We have had two very successful events since the last issue. The SC Scholastic Championship and SC Open had 88 and 70 participants respectively.

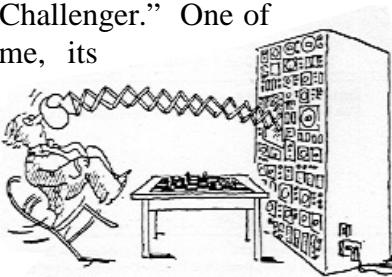
(President continued on page 14)

The View From “C” Level

By Pete Danker

To be honest, I began writing this about the various computer chess programs on the market today, but it suddenly dawned on me that I had absolutely no idea what I was talking about. While some may point out that fact has never seemed to bother me before, this time it did. The variety, styles, strengths, and functions were just too many to name. What I do want to discuss is the effect they have on the lower-rated player.

My first experience with an electronic chess machine was the “Fidelity Chess Challenger.” One of the strongest of its time, its playing strength depended on the amount of time you gave it to “think,” or process options; five seconds equaled around a 1200



rating, twenty seconds around 1400, and so forth. It could be set to take up to eight hours to move. Rather primitive by today’s standards, but it would still give the average “C” player a run for his money. Since the inception and adoption of the RISC and TASC processing speeds and analysis depths, this particular program, while still fun to play, cannot be considered a serious training or study aid.

Though I have six chess-playing programs on my computer, I do not use them for analysis of my past games, because there simply seems to be no point. We, as “C” players, are best served using them to study basic opening variations, since that is where we cannot respond correctly. As an example, I ask that you fol-

(C-Level continued on page 5)

(C-Level continued from page 4)

low along as I play Fritz 4 in the “Advanced Levels” mode, G/30. I will add my own observations.

(282) Danker,P – Fritz 4 [B92]

1.e4 c5 2.♘f3 d6 3.d4 cxd4 4.♘xd4 ♘f6 5.♘c3 a6 6.♙e2 e5 7.♘f3 h6 8.0-0 ♙e7 9.a4 At this point, I noticed that Fritz had been annotating the game. I shut down the feature after making my ninth move, one that I would not have made had the program not shown it to me. From this point, I am flying solo. **9...♚c7 10.♚d3** The queen is an expensive security guard for the pawn on d4, but the c3 knight is already a liability rather than an asset. **10...0-0 11.♘d5** This will eliminate one of his attacking pieces, and my knight wasn't much good for anything else. **11...♘xd5 12.exd5** NOW I see

f5 coming, it's just a matter of time. **12...♙d7 13.c4 f5 14.♚c3** Not hard to see that fork coming. This thing uses every piece on the board! **14...♙f6 (diagram) 15.♚c2** This may have been unnecessary. I wonder if 15. b4 e4 16. Nd4 is better. **15...e4**



Danker v. Fritz4 after 14...f6

The aforementioned continuation had to be better than having to block my own dark bishop. Now, the b2 pawn can't move for a while. **16.♘d2 ♙e8 17.♖b1** In order to play b4 followed by Bb2. Too much to do in too little time. **17...♙d4 18.♙h1** The inevitable, eventual e3 push can't be good for my game. **18...b5** Yeah, like I don't have enough problems. **19.b3 ♚b6 20. axb5 axb5 21.cxb5 ♙xb5 22.♙xb5 ♚xb5** Okay, now I have a semi-open b-file, and his queen off

(C-Level continued on page 15)

Lucky PET: A Look Back at the 1977 State Championship

“A good player is always lucky.”

Capablanca

Law school professors are a particularly odious group. Over the course of a semester they place tremendous reading assignments on law students. They teach in a so-called “Socratic” method where they ask questions without giving any answers. Through this dialogue, they claim to teach students “how to think like a lawyer.” The student’s grade is then based on one exam given in each class at the end of the semester. For the fall semester, these brutal exams fall in early December. No law student ever has a good Thanksgiving because he’s too busy preparing for exams. It would be unthinkable for a law student to compete in a major chess tournament on the eve of exams, much less win it. Well, in November 1977, a twenty-four year old third year law student competed in and won our state championship. Who was this daring student: Paul E. Tinkler, aka, “PET” on the Internet Chess Club. When recently asked about his amazing win in 1977, Tinkler modestly said he was “just lucky.”



Paul E. Tinkler, circa 1977

Our 1977 state championship was held on November 11-13 at the recreation center in Camden, South Carolina. Forty players competed.. John McCrary and

(Lucky PET continued on page 7)

(Lucky PET continued from page 6)

Richard Stucker directed the tournament.

Tinkler, then rated only 1691, was the fourth highest rated player in the top section, behind Klaus Pohl (2094), Marvin Chappell (1843), and William McClain (1819). Tinkler began his drive through the field with a win over Doug Taffinder of Charleston. He then faced Klaus Pohl in the second round. Pohl blundered and Tinkler methodically pressed home the win in 61 moves. Having defeated the highest rated player, Tinkler then faced the sec-

ond highest, Marvin Chappell, in round three. After Chappell resigned, onlookers began to speculate about a Class B player becoming our

**“Luck is what happens
when preparation
meets opportunity.”**

Elmer G. Leterman

state champion. In the fourth round on Sunday morning, Tinkler defeated third-ranked William McClain to move within one game of winning the tournament.

He then battled Claude Corbett in the final round. On his fourth move, Tinkler nervously hung a piece. His drive for the state crown appeared over. But, as quickly as the fickle chess gods took from Tinkler, they gave back when Corbett blundered. With the game’s balance restored, Tinkler cruised to victory with his trademark precision. He finished with a perfect score.

Tinkler went on to graduate from law school in 1978. In 1985, only eight years after his amazing state championship performance, he won a landmark employment law case before the South Carolina Supreme Court.

Today he is a partner in the firm of Wallace & Tinkler and is one of the finest lawyers in South Carolina. He recently won a seat on Charleston’s City Council. Apparently, he’s still “lucky.”

TOURNAMENT NEWS

Scholastic Championships

The 1999 Scholastic Championships were held in Columbia on March 6 at Airport High School. Eighty-eight students participated: 45 from high school, 22 middle, and 21 elementary.

There was a five-way tie for first in the high school section, with Chad Warren, James McDougall, Stephen Ammons, Michael Berry, and Bryce Howard each scoring 5.0. Tim Rankin dominated the middle school section with a perfect score. Daniel McEachern won the elementary school section.

The following are our individual grade champions:

12th Grade: James MacDougall

11th Grade: Michael Berry

10th Grade: David Williams

9th Grade: Elliot Shields

8th Grade: Samuel Bush

7th Grade: Drew Tweit

6th Grade: Tristan Cullen

5th Grade: Katherine Chester

4th Grade: Josh Street

3rd Grade: Anna Evans

2nd Grade: Randy Stone

1st Grade: Alaric Bruce

Kindergarten: Hayden Raabe

(News continued on page 9)

SHEAF WINS SOUTH CAROLINA OPEN

THE 1999 SOUTH CAROLINA OPEN WAS HELD IN ROCK HILL, SOUTH CAROLINA ON JUNE 11-13. THE OPEN SECTION WAS WON BY MIKE SHEAF, WHO SCORED 4.0 IN THE FIVE ROUND SWISS EVENT. DON HOFFER WON THE AMATEUR SECTION WITH A 4.5 SCORE, AND DANIEL SOLAREZ DOMINATED THE RESERVE SECTION WITH A PERFECT SCORE. SEVENTY PLAYERS COMPETED IN SOUTH CAROLINA'S LARGEST OPEN TOURNAMENT. THE EVENT WAS DIRECTED BY MICHAEL SPOHN AND PETE DANKER.



(News continued from page 8)

The Governor's School for Science and Mathematics reclaimed the High School team title, with Saluda High and Sumter High finishing second and third respectively. Ladies Middle School won the Middle School team title, and Wilder Elementary in Sumter won the Elementary School title.



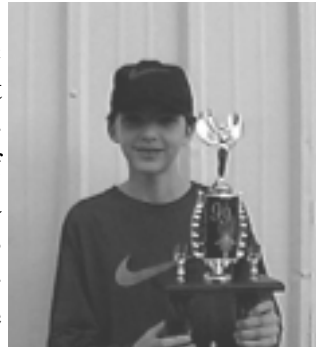
Daniel McEachern
Elementary School Champion

Lower State Championships

Our Lower State Scholastic championships were held on February 13, 1999, at Scott's Branch High. Aseem Sood finished first with a perfect score. Aubry Threlkeld finished second. The Governor's School won the team title with Sumter High finishing second.

Mid-State Championships

The Mid-State Scholastic Championships were held at Sumter High School on February 20. James McDougall of Lexington came in first with a perfect score. Scott Adkins and Jed Hubbard tied for second. Sumter High won the team title with the Governor's School finishing second.



Tim Rankin
Middle School Champion

Scholastic Quick Chess

The Scholastic Quick Chess Championships were held in Sumter on April 17. Chad Warren finished first with a perfect score. James MacDougall, Scott Adkins, Anthony Mott, and Brandon Miller tied for second.

Attacking the Uncastled King

By Henry J. White

"In the openings, bring your pieces out quickly, and castle early in the game, generally on the kingside. Castling usually makes the position of your king safer."

Capablanca

Castling is a very useful move. It gets your king out of the center of the board where he is a target. It allows you to complete the coordination of your pieces. As long as your king remains on his original square, it is difficult for your pieces to move between the king and queen sides of the board, especially movement of the rooks. Whenever your opponent has allowed his king to linger in the center, look for opportunities to attack. If you have a way of taking away your opponent's right to castle, by making his king or rook move for instance, you should generally do so.

In deciding whether to press the attack against the uncastled king, Grandmasters Lev Alburt and Sam Palatnik set forth two rules in the fourth volume of Alburt's *Comprehensive Chess Course*: "First, you have to have superior development. Second, you must grab hold of the initiative." Let's see these general principles at work in tournament play.

(195) White,H (1764) - Fish,D (2128) [E38]

SC Championship Columbia, SC (4), 1991

1.d4 ♟f6 2.c4 e6 3.♟c3 ♘b4 4.♚c2 c5 5.dxc5 ♘xc5 6.♟f3 d5 7.♙g5 ♚b6 8.e3 ♟e4 9.♟xe4 dxe4 10.♟d2 ♘b4 11.0-0-0 h6 12.♙f4 f5 13. ♙e2 ♟c6 Here, my development is complete while my opponent has yet to develop his queenside, and more importantly, he has yet to castle. I immediately grabbed the opportunity to keep him

(Attacking continued on page 11)

(Attacking continued from page 10)

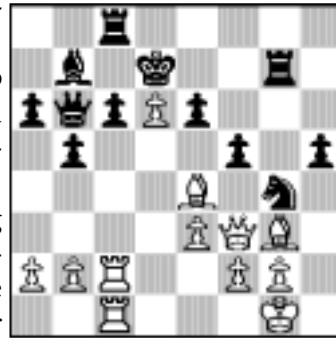
from castling. **14. Qh5+** ♔
e7 (diagram) Now, with my opponent unable to castle, I started looking for ways to seize the initiative. I didn't want to give him time to castle the long way by Rd8 followed by walking his king to safety by Kf7 and Kg8. The quickest



White v. Fish after 14...Ke7

way to seize the initiative is to sacrifice something. It was the great Alekhine who said that having your opponent's uncastled king under attack is often worth a piece. I decided to test Alekhine's advice. **15. Qxe4 e5 16. Qg3 fxe4 17. Qxe4 Qd6 18. Qg6 Bg8 19. Qh4+** I missed the mate by 19. Qxd6, but mate could still not be avoided. **1-0.**

In this year's Land of the Sky, I reached the following position against Otie West in the first round. I've done a pretty good job tying my opponent down on the queenside by pressuring the pawn on c6. With my opponent's king stuck in the center, I decided to seize the initiative by giving up my bishop for two pawns. I was optimistic



White v. West after 25...Rc8

that I would also win a third pawn. **26. Qxf5 Bf7 27. Qxe6+ Qxe6 28. Qe4+ Qd7 29. Bc5** It was vital to keep his bishop bottled up. Moreover, c5 served as a good springboard to get my rook over to the kingside where it could join the attack. **29... Bcf8 30. Bxh5 Qf6 31. Qf5+ Qe8 32. Qe6+ Qd8 33. Qh4 Qa8 34. Bh6 Qb7 35. Bxf6 Bxf6 36. Qxf6+ Bxf6 37. Qxf6+ Qd7 38. Bc5 1-0.**

From the Editor's Desk

Dues Increase

I have proposed a budget to the officers of the SCCA in which I will produce four issues of this newsletter with a minimum of twenty pages per issue for a total of \$600.00 per year. Each issue will cost approximately \$150 to copy and mail. Our problem is that we generate only a little more than \$600.00 per year from our membership dues.

Our last dues increase occurred at the 1988 Annual Meeting when we raised dues from the then \$6.00 to our current \$8.00. The junior membership dues stayed at \$3.00, where it currently remains. The last time the association paid all of the newsletter costs was in 1994, when we paid \$460.00 to produce and mail *Palmetto Chess*. So, our costs have increased but our dues have remained the same. Accordingly, your officers are going to propose at our next Annual Meeting that both our regular and junior dues be increased \$2.00. Our dues would then be \$10.00 for regular memberships and \$5.00 for junior memberships.

SC Open Best Games

As an incentive for players to submit game scores, I (along with an anonymous donor) sponsored a \$60.00 prize fund for the three best games played at the SC Open. The games I selected can be found on page 13. The winners of these games have each been sent a check for \$20.00.

Apology to Gary Hardin

In the last issue I made a mistake and neglected to publish two very well played games submitted by Gary Hardin. I then promised to publish them in this issue, but ran out of space. To add insult to injury, one of the games I am publishing in this issue is one he lost. However, the two games he submitted are in the database at our website.

South Carolina Games

(281) Hardin,G (2033) – Collins,J (1816) [B56]

SC Open Rock Hill, SC (5), 6/13/1999

1.e4 c5 2.♟f3 ♘c6 3.d4 cxd4 4.♞xd4 d6 5.♞c3 ♗d7
6.♗e3 ♟f6 7.f4 g6 8.♞f3 ♗g7 9.h3 ♞a5 10.♞b3 ♞d8
11.a3 ♖c8 12.♗d3 ♜a5 13.♞d2 a6 14.♞f2 ♖c6 15.
♞d5 ♞c8 16.♞b4 ♖c5 17.0-0 ♖h5 18.♗e2 ♗b5 19.
♗xh5 ♗xf1 20.♖xf1 ♞xh5 21.g4 ♟f6 22.e5 ♞xg4 23.
hxg4 ♞xg4+ 24.♞g2 ♞xg2+ 25.♞xg2 dxe5 26.fxe5
♗xe5 27.♞d3 ♗g7 28.♗c5 h5 29.♟f3 ♘c6 30.♖e1 f6
31.♟f4 ♟f7 32.♞e6 ♗h6 33.b4 g5 34.♞fd4 ♞e5 35.
♞c7 ♖d8 36.♖e2 ♞g6 37.♟f1 e5 38.♟f5 ♖d1+ 39.♟f2
♗f8 40.♗xf8 ♞xf8 41.c4 ♖d7 42.♞d5 ♞e6 43.♞b6
♖d3 44.a4 ♟f4 45.♖c2 h4 46.b5 ♞g6 47.♞e3 h3 48.
c5 h2 49.♖c1 ♖d2+ 50.♟f3 ♞e2 51.♖h1 ♞g1+ 52.♟f4
e4 ♖d4# 0-1.

(272) Carter,J (1296) – Moss,W (1366) [B07]

SC Open Rock Hill, SC (4), 6/13/1999

1.e4 d6 2.♟f3 ♟f6 3.♞c3 g6 4.♗c4 ♗g7 5.d3 c6 6.
♗g5 0-0 7.0-0 b5 8.♗b3 ♞bd7 9.d4 ♗a6 10.♖e1 c5
11.a3 c4 12.♗a2 ♖e8 13.♞d2 ♞b6 14.b4 ♗b7 15.
♞e3 ♞g4 16.♞f4 ♞xf2 17.♞xf2 ♗xd4+ 18.♞xd4 e5
19.♞d2 exd4 20.♞d5 ♗xd5 21.exd5 ♞e5 22.h3 c3
23.♞d1 d3+ 24.♗e3 dxc2 25.♞xc2 ♞d8 26.♞g1 ♖c8
27.♞e2 ♞h4 28.♞xb5 ♞g3 29.♞e2 c2 30.♖ac1 f5 31.
♗b3 f4 32.♗xf4 ♞xb3 33.♖a1 ♞xd5 34.♞d2 ♞xd2
35.♗xd2 ♞d3 36.♖f1 ♖c7 37.♗c1 ♖e1 38.♖xe1
♞xe1 39.♟f1 ♞d3 40.♞e2 ♞e5 41.♞d2 ♖f7 42.♞e2
d5 43.♖a2 d4 44.♞e1 d3 45.♗e3 ♞c4 46.♗d2 ♖e7+
0-1.

(275) MacDougall,J (1331) – Koester,J [C57]

SC Open Rock Hill, SC (5), 6/13/1999

1.e4 e5 2.♟f3 ♘c6 3.♗c4 ♟f6 4.♞g5 d5 5.exd5
♞xd5 6.♞xf7 ♟xf7 7.♞f3+ ♞f6 8.♗xd5+ ♞e8 9.

(Games continued on page 14)

(Games continued from page 13)

♙xc6+ ♖xc6 10.♙h5+ g6 11.♙xe5+ ♗e6 12.0-0 ♖g8
13.♖e1 ♜d7 14.d4 ♗g7 15.♙e4 ♗f5 16.♙e7+ ♜c8
17.♙f7 ♖f8 18.♙xg7 ♜d6 19.♗f4 ♜d8 20.♗xc7 ♖e8
21.♗c3 ♖xe1+ 22.♖xe1 ♜d7 23.♙f8+ ♜xc7 24.♙xa8
♜xd4 25.♗b5+ 1-0.

(President continued from page 3)

recognition. It is because of Pete's hard work that we attract so many people from across the nation to the SC Open. People like Pete make things happen in this state.

We have had two successful events since the last issue. The SC Scholastic Championship and SC Open had 88 and 70 participants respectively. Slowly but surely our tournaments are starting to grow. The day is coming when we will have several tournaments with a field of over 100 players. One of the reasons for this is simply the hard work put in by people across this state. Unfortunately, space does not allow me to name everyone who deserves to be recognized. Hopefully, these hard workers know how much I appreciate their efforts.

If you do not have a tournament in your area and would like one, talk to me and I will see what I can do. With your help along with our dedicated organizers around the state, we can increase the number and size of our tournaments. I have a lot of wonderful friends who have proven what you can do if you really put your heart into it.

Lastly, if you are willing, I would like to serve you again next year as President of the South Carolina Chess Association.

Lord willing, I will see you at the Charleston Classic in August or the State Championships in October.

(C-Level continued from page 5)

the a7-g1 diagonal. I probably should play 23. Qc4 and see what happens, but instead. . . **23. ♖c4 ♜c8** **24. ♗e2** I should have played Bf4 instead. Notice that the knight is still pinned, worse than ever. **24... ♗xd5** **25. ♖f4 ♖c6** Now I can take the d-pawn, but how. If I wait, Fritz will play Be5 and we break even. **26. ♜fd1** Pinning the bishop and threatening a big-time fork at b6. **26... ♗e6** Which way should I take the pawn? **27. ♖xd6** I took this way because he must move his c8 rook. **27... ♜d8** **28. ♖c4 ♖f6** **29. ♜d6** Challenging his right to the open file. **29... ♜xd6** Recapture with the knight or bishop? I don't know. **30. ♖xd6 ♖d4** **31. ♗d1 ♖b5** Nice try, but I'm the fork specialist, fella! **32. ♖b4 ♜a2** **33. ♗e1** Be1 was probably the best move. It protects the bishop and leaves the queen on the open file. **33... ♖d4** **34. ♖e3** I had to do something about Nc2. **34... f4** The pawn storm begins. **35. ♖c4 e3** **36. fxe3** Now, the real lesson begins. Watch closely and take notes. **36... f3!!** If I take the knight, 37. exd4, he plays 37...fxg2+ 38. Bxd4+ Ouch! **37. gxf3 ♖xf3!!** I either lose my queen or get mated at h2. If I want to try my luck with two pieces against his lone queen with 38. Qg3, he plays 38...Qe4!! I've seen enough. I must note here that I didn't go into this game with a fatalistic view expecting to lose, though it may seem as such. I played the best moves I could see. Notice that the opening sequence was sound for nine moves before I got out of the book, and notice how quickly the program started taking advantage. That is what modern chess programs do: they may tell us what to play, but they don't tell us why. So, get the most from your program, and don't be ashamed to use the take-back option. Finally, like it or not, computers and computer chess are here to stay. Let's use them to our advantage. **0-1.**

South Carolina Open

June 11-13, 1999

TD: Michael Spohn

	Open Section	Rating	Rd 1	Rd 2	Rd 3	Rd 4	Rd 5	Score
01.	Sheaf, Mike	2128	W8	D9	W2	D3	W4	4.0
02.	Kleist, Frederick	2040	W10	W4	L1	W12	D3	3.5
03.	Cunningham, R.	2243	D12	D6	W11	D1	D2	3.0
04.	Noble, Matthew	2216	W7	L2	W6	W9	L1	3.0
05.	Liu, Daniel (4)	2060	-H-	L12	W7	D8	W10	3.0
06.	Vonderlieth, John	1913	W14	D3	L4	W15	D8	3.0
07.	Bourne, Darrel F.	1783	L1	-B-	W15	D5	D6	3.0
08.	Collins, James	1816	L4	W14	L5	-B-	W9	3.0
09.	Hardin, Gary B	2033	W11	D1	-H-	L4	L7	2.0
10.	Newsome, Gary	1913	L2	-H-	D13	W11	L5	2.0
11.	McCartney, P.	1891	L9	W13	L3	L10	-B-	2.0
12.,	Oody, Kyle	1824	D3	W5	-H-	L2	-N-	2.0
13.	Stewart, Ben	1761	D15	L11	D10	D14	-H-	2.0
14.	Curcuru, Michael	1742	L6	L7	-B-	D13	-H-	2.0
15.	Lombard, Ralph	1927	D13	-H-	L8	L6	-U-	1.0
	Amateur Section	Rating	Rd 1	Rd 2	Rd 3	Rd 4	Rd 5	Score
01.	Solarez, Daniel	1390	W10	W16	W9	W8	W5	5.0
02.	Eggers, Graydon	1387	L20	W25	W15	W21	W10	4.0
03.	Carter, Jeremy R	1296	W33	W22	W14	L5	W13	4.0
04.	Brown, Brandon	0938	L8	W28	W26	W9	W7	4.0
05.	Moss, William	1366	W12	D15	W17	W3	L1	3.5
06.	Mac Dougall,	1331	D29	L17	W25	W15	W19	3.5
07.	Cameron, Chuck	1357	D17	D29	W11	W20	L4	3.0
08.	Rothstein, Jerry	1353	W4	W20	W21	L1	-U-	3.0
09.	Evans, Anthony	1265	W23	W27	L1	L4	W17	3.0

	Amateur Section	Rating	Rd 1	Rd 2	Rd 3	Rd 4	Rd 5	Score
10.	Keller, Laurin	1198	L1	W24	W27	W14	L2	3.0
11.	Morse, Rob	1000	L26	W33	L7	W23	W18	3.0
12.	Thielen, Thomas	0997	L5	L13	-B-	W27	W20	3.0
13.	Hands, James S.	Unr.	L15	W12	W19	X18	L3	3.0
14.	Johnson, Sean	Unr.	W32	W18	L3	L10	W21	3.0
15.	Nash, William	1244	W13	D5	L2	L6	W22	2.5
16.	Rhodes, Samuel	1230	W28	L1	-H-	L17	W27	2.5
17.	Bambara, Nick	1106	D7	W6	L5	W16	L9	2.5
18.	Jones, Chris	1248	W24	L14	W22	F13	L11	2.0
19.	Koester, James	1195	L27	W23	L13	W24	L6	2.0
20.	Mahaffay, Jeffrey	1165	W2	L8	W29	L7	L12	2.0
21.	Khan, Victor	1127	W31	W26	L8	L2	L14	2.0
22.	Brown, Terry	0830	-B-	L3	L18	W29	L15	2.0
23.	Dunn, Kevin G.	Unr.	L9	L19	W28	L11	W29	2.0
24.	Varney, Wesley	Unr.	L18	L10	W33	L19	W28	2.0
25.	O'Conner, Saul	0811	D30	L2	L6	L28	-B-	1.5
26.	Yutz, Eddie	1315	W11	L21	L4	-U-	-U-	1.0
27.	Morse, Jared	0645	W19	L9	L10	L12	L16	1.0
28.	Bruce, Alaric	Unr.	L16	L4	L23	W25	L24	1.0
29.	Halliday Jr, R.	Unr.	D6	D7	L20	L22	L23	1.0
30.	LeCraw, RC	1273	D25	-U-	-U-	-U-	-U-	0.5
31.	Moss, William	1366	L21	-U-	-U-	-U-	-U-	0.0
32.	LeCraw, RC	1273	L14	-U-	-U-	-U-	-U-	0.0
33.	Siragusa, Sonny	Unr.	L3	L11	L24	-N-	-N-	0.0

	Reserve Section	Rating	Rd 1	Rd 2	Rd 3	Rd 4	Rd 5	Score
01.	Hofer, Don	1425	-B-	W22	W4	D3	W6	4.5
02.	Thompson, James	1720	W20	L5	W16	W9	W8	4.0
03.	Whittington, R.	1650	W10	W15	W6	D1	-H-	4.0
04.	Holmes, Gil	1600	-H-	W18	L1	W19	W13	3.5
05.	Jones, Jeffrey	1597	W21	W2	W8	L6	-H-	3.5
06.	Bader, Andras	1724	W11	W9	L3	W5	L1	3.0
07.	Ahmed, Zakir	1719	L15	D17	W21	D16	W14	3.0
08.	Griffin, David	1668	W12	W13	L5	W14	L2	3.0
09.	Rogers, John	1564	W17	L6	W15	L2	W16	3.0
10.	Haymond, John	1400	L3	L11	-B-	W21	W18	3.0
11.	Carlson, Albert P.	1481	L6	W10	L14	W15	-H-	2.5
12.	Jenkins, David	1471	L8	L14	D20	W22	W19	2.5
13.	Roberts, John G	1457	W14	L8	-H-	W18	L4	2.5
14.	Abron, Michael	1550	L13	W12	W11	L8	L7	2.0
15.	Garrett, Daniel	1534	W7	L3	L9	L11	W20	2.0
16.	Rankin, Tim	1509	D22	W19	L2	D7	L9	2.0
17.	De Bell, Jerome	1468	L9	D7	L18	D20	W21	2.0
18.	McKern, Carl	1525	D19	L4	W17	L13	L10	1.5
19.	Dillard, Leroy	1400	D18	L16	W22	L4	L12	1.5
20.	Bass, Tommy N.	1473	L2	L21	D12	D17	L15	1.0
21.	Pilaud, William	1400	L5	W20	L7	L10	L17	1.0
22.	Hyatt, James C.	1600	D16	L1	L19	L12	U	0.5

FALL SCHOLASTIC: NOVEMBER 20

5SS. G30. Lorick Park, 1751 Lorick Ave., Columbia, SC. 3 Sections. High School: trophies to 1st-3rd place, 1st Under 1000 & 1st-2nd place team. Middle School: trophies to 1st-2nd place. Elementary School: trophies to 1st-3rd, 1st Unrated. EF: \$5. **USCF** membership required. (Special for first time elementary players - EF & USCF \$15. Registration: 8:30-9:30. Rounds: 10-1-2-3-4. Enter: **SCCA**, 6855 Peach Orchard Road, Dalzell, SC 29040. (803) 469-9386. **Mike Spohn**

CHARLESTON CLASSIC XIX

AUGUST 21 - 22

5-RR (6-player sections according to ratings from the top down).

SITE

"The Court" at the Knight's Inn 2355 Aviation Avenue & I-26 (exit #211), Charleston, South Carolina [\$31.50 (double bed) - \$40.50] (843) 744-4900

ENTRY FEE

\$30 by 8/18/99; \$35 at site.

USCF membership required.

PRIZES

1st = \$125 (guaranteed)

TIME CONTROL

GAME 90 (Round 1 only) 35/90; SD/60 (Rounds 2 - 5).

ROUNDS

10 - 2 - 7; 9:30 - 2:30. (scheduled start times - may play sooner)

ENTER

Charleston Chess Club c/o **Patrick Hart** 1558 Periwinkle Drive Mount Pleasant, SC 29466-9146

(843) 849-0177 (after 1:00 PM).

REGISTRATION

9:00 - 9:50 AM.

ALTERNATE MOTELS

Masters Economy Inn [\$39.00 - \$49.00] 6100 Rivers Avenue (843) 744-3530

SOUTH CAROLINA CHAMPIONSHIPS

OCTOBER 30 - 31

5SS. Round 1 G90, Rounds 2-5 35/90, SD/60. Days Inn Southeast, 7300 Garners Ferry Road (at I-77), Columbia, SC. \$\$900 b/40. 4 Sections. Championship: trophy to 1st and 2nd place SC residents. \$100-60-40; A: \$60-40. Amateur (U1800): trophy to 1st. \$100-60-40; C: \$60-40. Reserve (U1400): trophy to 1st. \$100-60-40; U1200: \$60-40. Junior (U20 years of age): trophy to 1st place as our Junior champion. One year free USCF membership (no withdrawals) to all in Junior Section. EF: \$30 if received by 10/25; \$35 at site; \$25 for Junior Section. Registration: 9-9:50. Rounds: 10-2:30-7:30, 9-2:00. SCCA membership required: \$8-\$3; Other states accepted. **USCF** membership required. Hotel: \$51. (803) 783-5500. More \$\$ per entries. Unrateds will be based on performance rating after 4th round. The Annual Meeting will be held from 1-2 pm after round 1. Enter: **SCCA**, 6855 Peach Orchard Road, Dalzell, SC 29040. (803) 469-9386. **Mike Spohn**

Palmetto Chess is published quarterly by the South Carolina Chess Association, a non-profit membership organization that sponsors and promotes chess competition in South Carolina. It is the US Chess Federation's official state affiliate chapter for South Carolina. Entire contents © 1999 by the South Carolina Chess Association. All rights reserved. Any reproduction in whole or in part, without the written permission of the South Carolina Chess Association, is prohibited.

Membership is \$8 per year, or \$3 for juniors under age 19.

Officers of the South Carolina Chess Association are:

President- **Michael Spohn**, 6855 Peach Orchard Road, Dalzell 29040

E-mail: mikespohn@hotmail.com

Vice President- **Henry J. White**, 320 Whitehurst Way, Columbia 29229

E-mail: d4nf6@aol.com

Secretary- **Bill Willard**, 506 West North 4th Street, Seneca 29678 E-

mail: bwillard@carol.net

Treasurer- **Patrick Hart**, 1558 Periwinkle Drive, Mount Pleasant 29466

E-mail: path@awod.com

Palmetto Chess is edited by:

Henry J. White, 320 Whitehurst Way, Columbia 29229 E-mail:

d4nf6@aol.com

Palmetto Chess
320 Whitehurst Way
Columbia, SC 29229