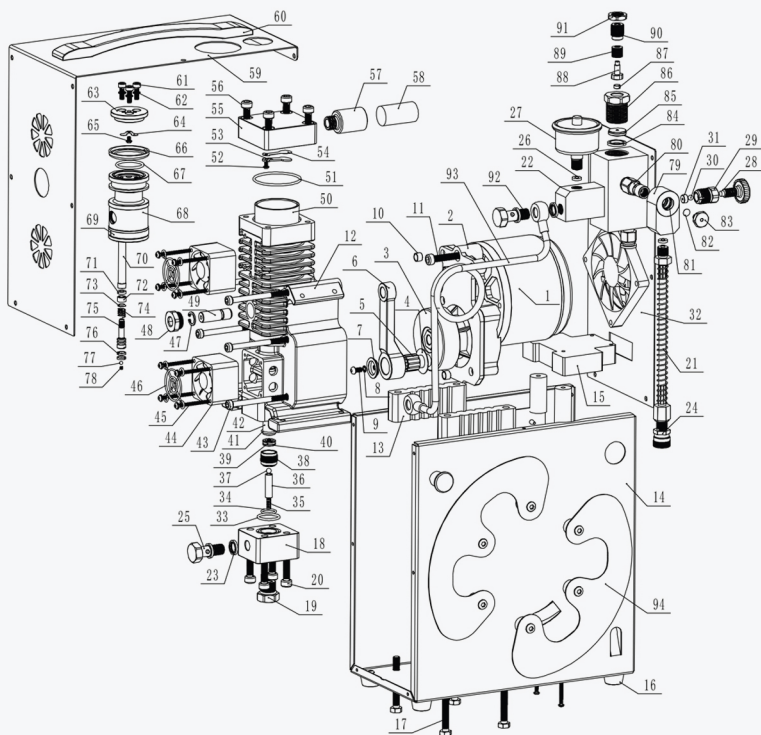


### 3 Diagram and spare parts list :



S/N	Name	S/N	Name	S/N	Name
1	Motor	33	O-ring 22*2	65	M3*4 round head inner hex screw
2	Motor cover	34	O-ring 15*1.5	66	Primary piston ring
3	crankshaft	35	spring	67	O-ring 27*2
4	Copper pads	36	Spring seat	68	Primary piston
5	Centripetal bearings	37	Check valve	69	Guide ring
6	Connecting rod	38	One-way seat	70	High pressure rod
7	Connecting rod retaining rings	39	O-ring 12*1.5	71	High pressure piston ring pad
8	M4 bomb pad	40	One-way valve pad	72	High pressure piston rings
9	M4*8 round head inner hex screw	41	O-ring 15*1.5	73	High pressure piston copper pads
10	Positioning sleeve	42	High pressure tubes	74	High pressure piston springs
11	M6*30 hex screw	43	M5*70 hex screw	75	High pressure piston
12	Chassis	44	Cooling fan	76	High pressure piston opening ring
13	Shock absorber pads	45	M3*35 screws	77	High pressure spool
14	Shell-bottom	46	Fan retainer net	78	spring
15	switch	47	Circlips	79	Output connector
16	Bottom foot	48	Threaded plugs	80	Output screw
17	M6*40 hex screw	49	Connecting rod pins	81	O-ring 17*2.5
18	High pressure cylinder head	50	First-stage cylinder liner	82	Explosion-proof film
19	Check valve nut	51	O-ring 46*2	83	Explosion-proof nuts
20	M6*30 hex screw	52	M3*6 round head hexagon screw	84	Composite washers
21	High pressure hose	53	Check valve flap	85	Pressure seat
22	Filter adapters	54	Valve plate	86	Pressure seat nut
23	Composite washers	55	First-stage cylinder head	87	Pressure valve pads
24	Quick couplings	56	M6*25 hex screw	88	Pressure adjustment core
25	Articulated connectors	57	Intake filter	89	Disc spring
26	Gaskets	58	Filter cotton	90	Pressure adjustment studs
27	Pressure gauges	59	Shell - top	91	Lock nut
28	Bleed valve	60	handle	92	Articulated connectors
29	Deflated nut	61	M4*12 hex screw	93	High pressure link tube
30	5mm steel ball	62	M4 composite washer	94	Winding reels
31	Bleed valve gas pads	63	Piston platen		
32	Enclosure-panel	64	V-shaped valve plate		