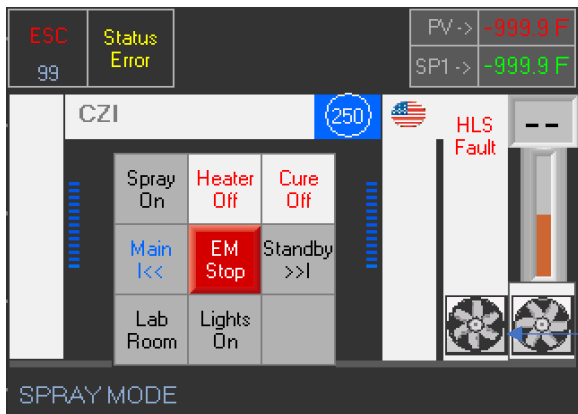




# V570 VFD'S

## VFD'S SETTINGS

### V570 CONTROL DISPLAY



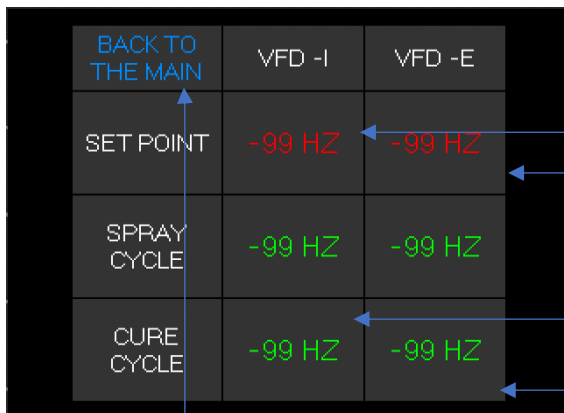
Hold the Left Blower for 4 seconds to get the VFD display

To improve and adjust the airflow in the spray booth, it is recommended to keep the VFD-I according to the factory settings .

If the spray booth has negative pressure it is recommended to reduce the VFD-E by one HZ at a time

If the spray booth has positive pressure is recommended to increase the VFD-E by one HZ at a time

### VFD'S SETTINGS for adjust the airflow



#### Spray Cycle Settings

VFD-I Press the green numbers to change HZ  
(SPRAY CYCLE MIN 45 MAX 58 HZ)

VFD-E Press the green numbers to change HZ  
(SPRAY CYCLE MIN 35 MAX 55 HZ)

#### Cure Cycle Settings

VFD-I Press the green numbers to change HZ  
(CURE CYCLE MIN 45 MAX 50 HZ)

VFD-E Press the green numbers to change HZ  
(CURE CYCLE MIN 25 MAX 40 HZ)

Press to Return to the last display