

SmartZone

By:

CureZone Inc.net

Wiring Diagram

MODEL					
CZ_V570_240V_3PH_10HP_10HP					
CUSTOMER	REMOTE MODEL	VOLTAGE INPUT	PH	VFD-I	VFD-E

INDEX

INDEX	1
3PH FEED	2
120V FEED	3
DRAWING	4
VFD'S	5
HEATER	6
REMOTE CONTROL	7
LEGEND	8
BOM	9



ALL DRAWINGS AND SPECIFICATIONS SHALL REMAIN THE PROPERTY OF CUREZONE INC. SHALL BE SURRENDERED UPON REQUEST. ALL INFORMATION CONTAINED HEREIN SHALL BE DEEMED CONFIDENTIAL THESE DRAWING AND SPECIFICATION MAY NOT BE REPRODUCED, COPIED EXPRESS, WRITTEN PERMISSION OF CUREZONE INC

DRAWN Dante Mondragon

ISSUED CZ_V570_240V_3PH_10HP_10HP

SIZE	FSCM NO	DWG NO	REV
		2022	DM
SCALE	1 in : 1 in	INDEX	SHEET 1

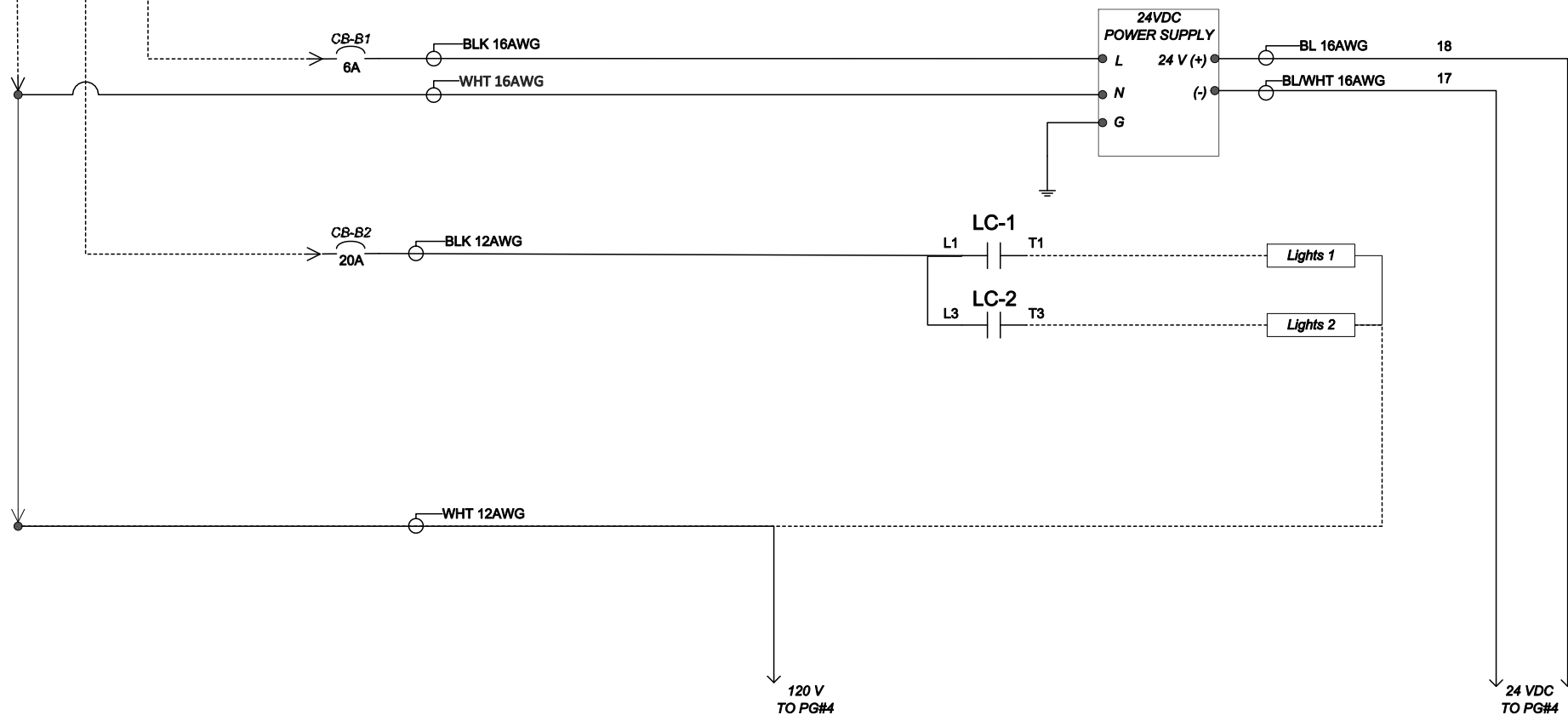
2-115V. 1 PH
60HZ.
INCOMING PROVIDED
BY OTHERS

PROVIDE BRANCH SHORT CIRCUIT
AND GROUND FAULT
PROTECTION PER NEC 430-53C
FOLLOW THE MAIN FUSE OR MAIN
CIRCUIT BREAKER SELECTION

120 V
FROM PG#2

VFDS					
DRIVE	INPUT	Wire Gauges (AWG)			CB
		L1/L2	T1/T2	GND	
T1	120V	16	16	14	CB-B1
LIGHTS	120V	12	12	14	CB-B2

N L1 L2

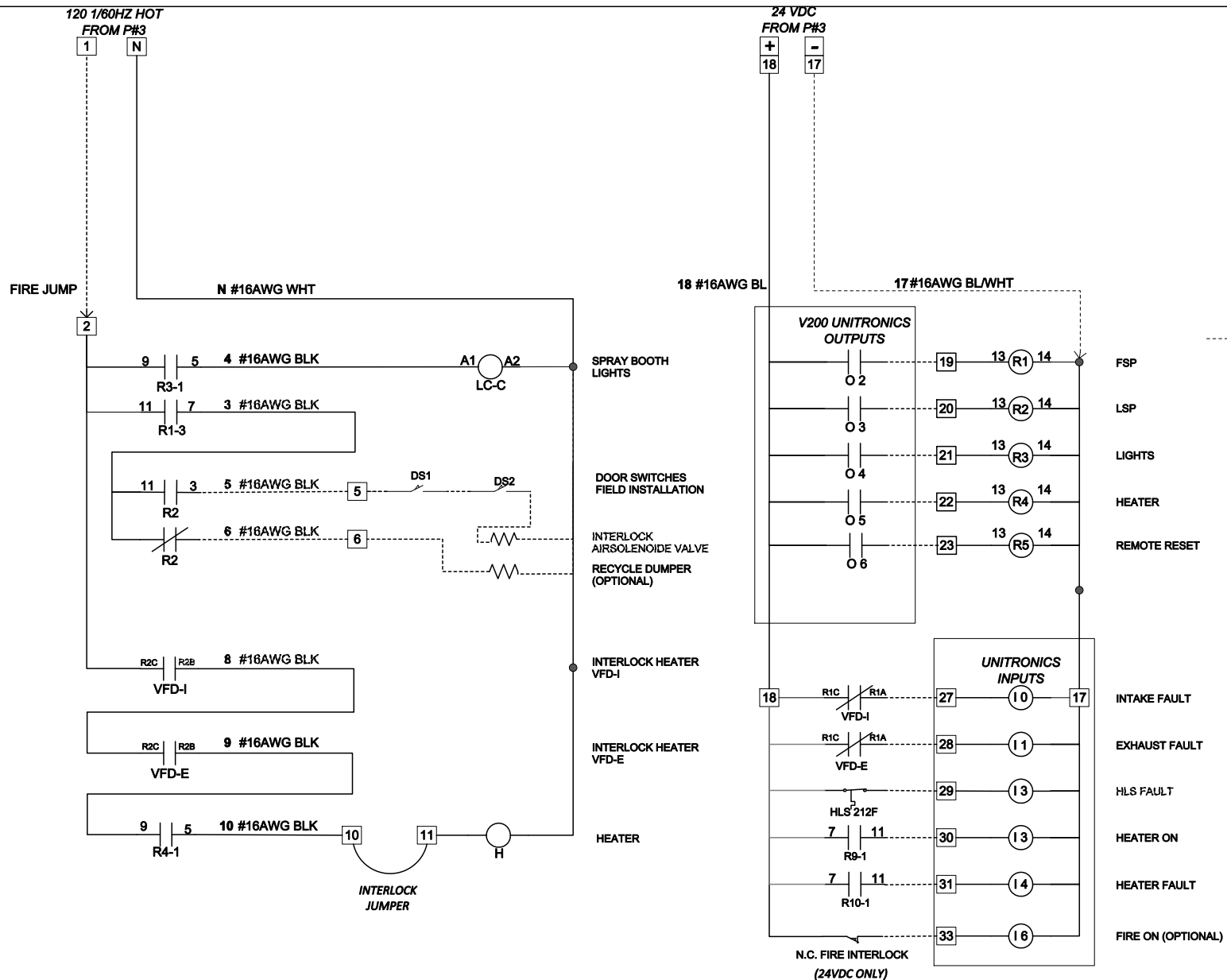


ALL DRAWINGS AND SPECIFICATIONS SHALL REMAIN THE PROPERTY OF
CUREZONE INC. SHALL BE SURRENDERED UPON REQUEST. ALL INFORMATION
CONTAINED HEREIN SHALL BE DEEMED CONFIDENTIAL. THESE DRAWING AND
SPECIFICATION MAY NOT BE REPRODUCED, COPIED EXPRESS, WRITTEN
PERMISSION OF CUREZONE INC

DRAWN Dante Mondragon

ISSUED CZ_V570_240V_3PH_10HP_10HP

SIZE	FSCM NO	DWG NO	REV
		2022	DM
SCALE	1 in : 1 in	120V FEED	SHEET
			3



PROVIDE BRANCH SHORT CIRCUIT AND GROUND FAULT PROTECTION PER NEC 430-53C FOLLOW THE MAIN FUSE OR MAIN CIRCUIT BREAKER SELECTION

HAVE A QUALIFIED ELECTRICIAN INSTALL WIRING ACCORDING NFPA 33. NEC AND LOCAL REGULATIONS

DOOR SWITCH USED ON TERMINAL 5,6 MUST BE RATED 120 VAC AND 100 VA

PROVIDED BY OTHERS

PROVIDED WITH PANEL

FIELD WIRING

TO REMOTE CONTROL

DOOR SWITCH BY OTHERS

RECYCLE DUMPER BY OTHERS

L3

L

X

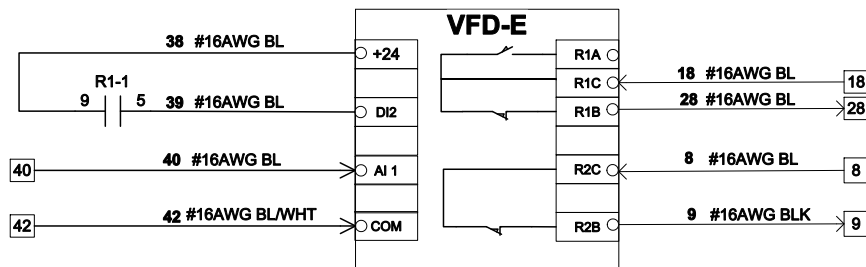
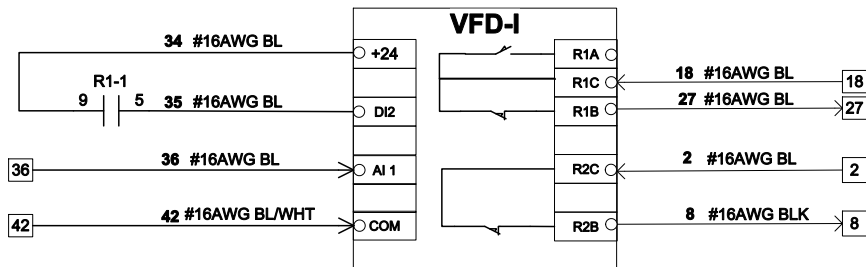


ALL DRAWINGS AND SPECIFICATIONS SHALL REMAIN THE PROPERTY OF CUREZONE INC. SHALL BE SURRENDERED UPON REQUEST. ALL INFORMATION CONTAINED HEREIN SHALL BE DEEMED CONFIDENTIAL. THESE DRAWING AND SPECIFICATION MAY NOT BE REPRODUCED, COPIED EXPRESS, WRITTEN PERMISSION OF CUREZONE INC.

DRAWN Dante Mondragon

ISSUED CZ_V570_240V_3PH_10HP_10HP

SIZE	FSCM NO	DWG NO	REV
		2022	DM
SCALE	1 in : 1 in	CONTROL PANEL	SHEET
			4



Exhaust blower capacity
Spray 13,000 SCFM (m3/h)
Cure 6,500 SCFM (m3/h)

PROVIDE BRANCH SHORT CIRCUIT AND GROUND FAULT PROTECTION PER NEC 430-53C FOLLOW THE MAIN FUSE OR MAIN CIRCUIT BREAKER SELECTION

HAVE A QUALIFIED ELECTRICIAN INSTALL WIRING ACCORDING NFPA 33, NEC AND LOCAL REGULATIONS

DOOR SWITCH USED ON TERMINAL 5,6 MUST BE RATED 120 VAC AND 100 VA

PROVIDED BY OTHERS

PROVIDED WITH PANEL

FIELD WIRING

TO REMOTE CONTROL

DOOR SWITCH BY OTHERS

RECYCLE DUMPER BY OTHERS

CAUTION: This appliance is designed and approved for the about conditions. Prior to any change in the solvent type, solvent loading or oven operating temperature, recheck and document that the above exhaust capacity is sufficient to maintain appliance atmosphere at or below 25% LFL

VFD-I SETTINGS

PAR	SETTING	NEW
SET		
Acc	30 SEC	
Dec	30 SEC	
Lsp	30.0 HZ	
Hsp	60.0 HZ	
Ftd	20.0 HZ	
DRC		
R2	Fta	
FLT		
OPL	Uf9	

VFD-E SETTINGS

PAR	SETTING	NEW
SET		
Acc	30 SEC	
Dec	30 SEC	
Lsp	30.0 HZ	
Hsp	60.0 HZ	
Ftd	20.0 HZ	
DRC		
R2	Fta	
FLT		
OPL	Uf9	



ALL DRAWINGS AND SPECIFICATIONS SHALL REMAIN THE PROPERTY OF CUREZONE INC. SHALL BE SURRENDERED UPON REQUEST. ALL INFORMATION CONTAINED HEREIN SHALL BE DEEMED CONFIDENTIAL. THESE DRAWING AND SPECIFICATION MAY NOT BE REPRODUCED, COPIED EXPRESS, WRITTEN PERMISSION OF CUREZONE INC

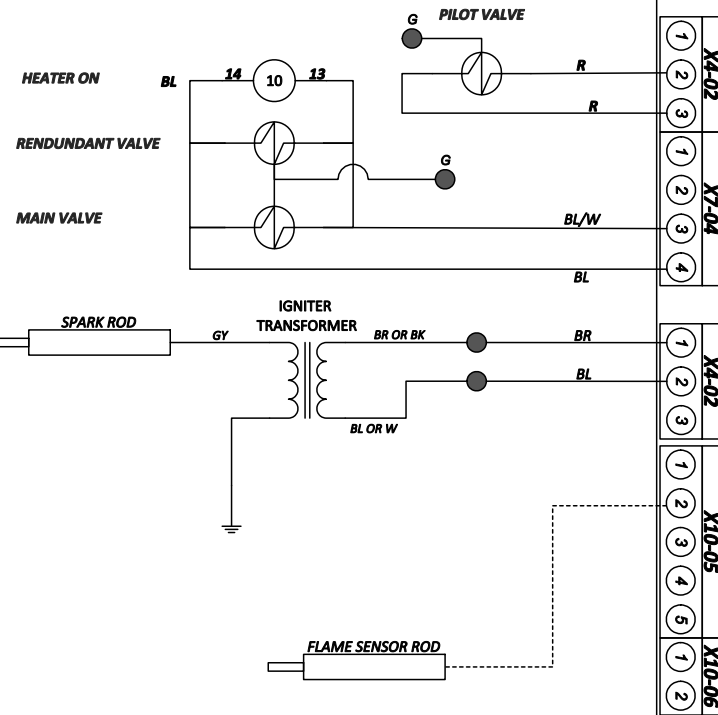
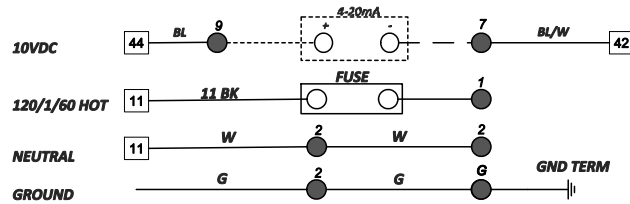
DRAWN Dante Mondragon

ISSUED CZ_V570_240V_3PH_10HP_10HP

SIZE	FSCM NO	DWG NO	REV
		2022	DM
SCALE	1 in : 1 in	VFD'S	SHEET 5

LEGEND

- SOLID: WIRING AND COMPONENTS BY MIDCO
 - - - DASHED: WIRING AND COMPONENTS BY INSTALLER
 ● SOLID ROUND: TERMINAL TRIP
 ○ OPEN ROUND: COMPONENT TERMINAL
 JUMPER NOTE: IF CIRCUIT IS USED; REMOVE JUMPER
 ○ FUSE ○ 5-20mm 6.3A SLOW BLOW FUSE



NOTES:

- 1) WIRE FLAME ROD OR UV SCANNER (NOT BOTH)
- 2) DO NOT CONNECT WIRES TO ANY UN-USED TERMINALS.

2	1	3	2	1	4	3	2	1	4	3	2	1
X65	X66	X76	X56									

SIEMENS
LME71.000A1

PME71.111A1

DISPLAY

OFF - Standby, waiting for call for heat

P24 - Fan motor on, actuator opens in high-fire

P30 - Prepurging

P36 - Actuator closes to ignition position

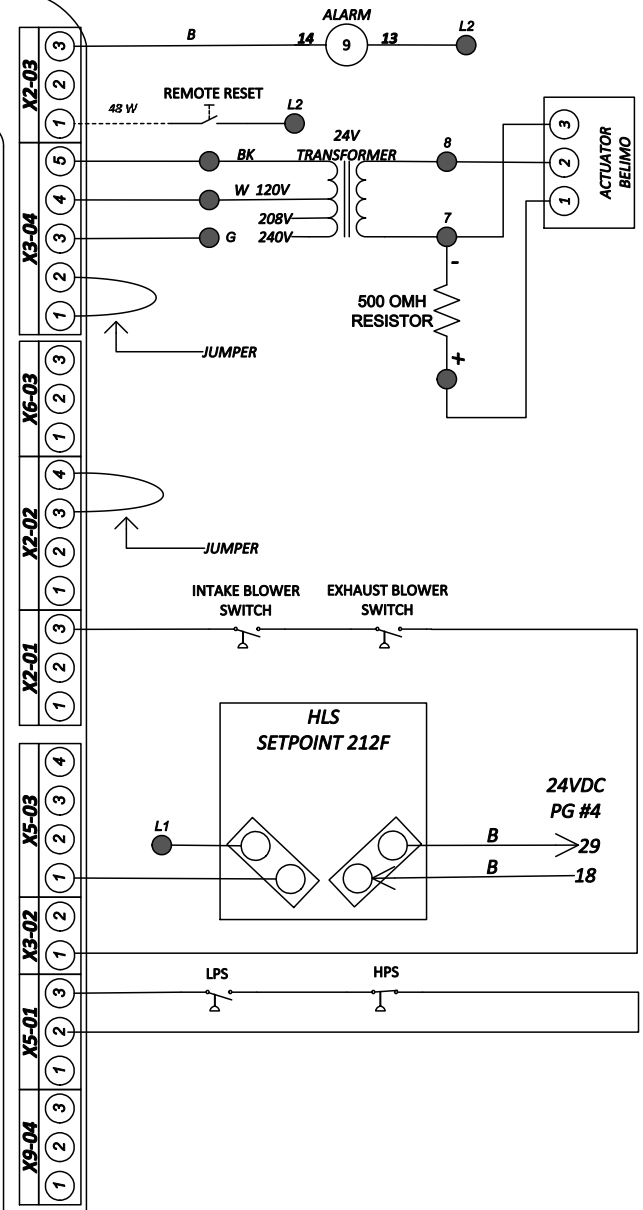
P40 - Ignition, Gas valve on

P44 - Pilot Stabilize

P74 - Post Purging

oP - Operating, Modulating operation

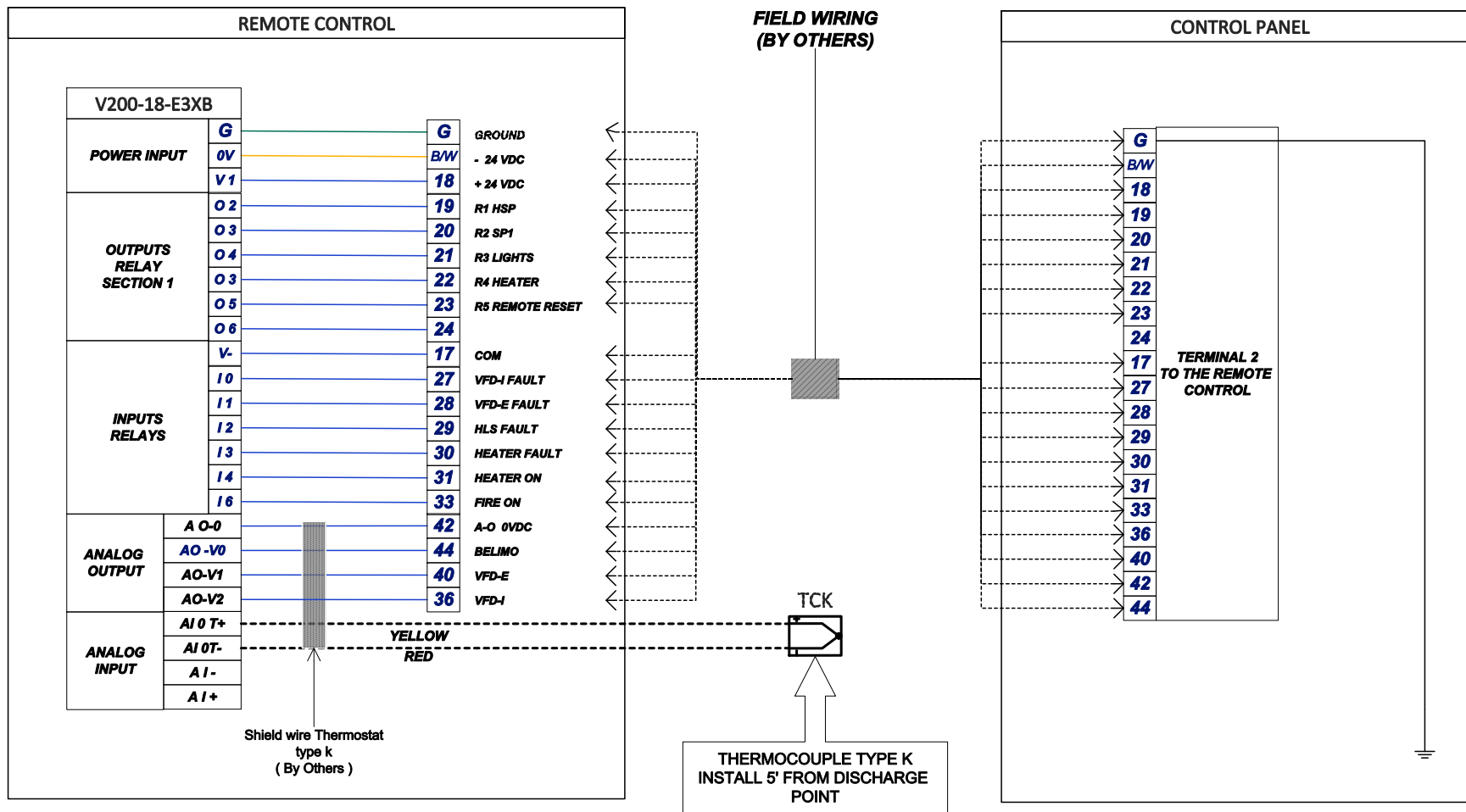
Loc - Lockout



ALL DRAWINGS AND SPECIFICATIONS SHALL REMAIN THE PROPERTY OF CUREZONE INC. SHALL BE SURRENDERED UPON REQUEST. ALL INFORMATION CONTAINED HEREIN SHALL BE DEEMED CONFIDENTIAL. THESE DRAWING AND SPECIFICATION MAY NOT BE REPRODUCED, COPIED, EXPRESS, WRITTEN PERMISSION OF CUREZONE INC.

DRAWN Dante Mondragon
 ISSUED CZ_V570_240V_3PH_10HP_10HP

SIZE	FSCM NO	DWG NO	REV
		2022	DM
SCALE	1 in : 1 in	HEATER	SHEET 6



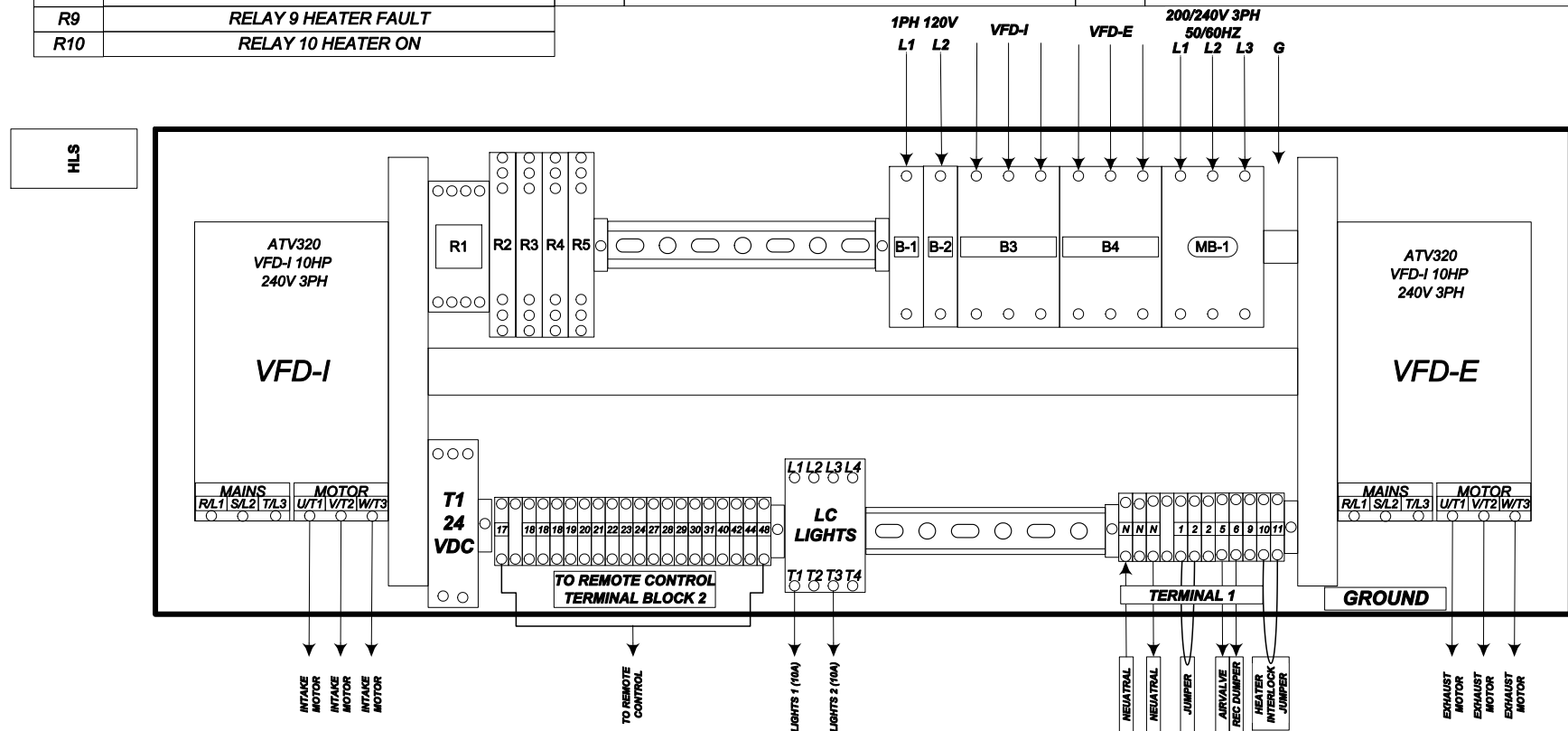
ALL DRAWINGS AND SPECIFICATIONS SHALL REMAIN THE PROPERTY OF CUREZONE INC. SHALL BE SURRENDERED UPON REQUEST. ALL INFORMATION CONTAINED HEREIN SHALL BE DEEMED CONFIDENTIAL. THESE DRAWING AND SPECIFICATION MAY NOT BE REPRODUCED, COPIED, EXPRESS, WRITTEN PERMISSION OF CUREZONE INC.

DRAWN Dante Mondragon

ISSUED CZ_V570_240V_3PH_10HP_10HP

SIZE	FSCM NO	DWG NO	REV
		2022	DM
SCALE	1 in : 1 in	REMOTE CONTROL	SHEET
			7

VFD-I	VARIABLE FREQUENCY DRIVE -INTAKE	LC	LIGHTS CONTACTOR	B1	CONTROL BREAKER 6A
VFD-E	VARIABLE FREQUENCY DRIVE -EXHAUST	E-AFS	EXHAUST AIRFLOW SWITCH	B2	LIGHTS BREAKER 25A
R1	RELAY 1 HSP	I-AFS	INTAKE AIRFLOW SWITCH	B3	INTAKE BREAKER 35A
R2	RELAY 2 SP1	TC-K	THERMOCOUPLE TYPE-K	B4	EXHAUST BREAKER 35A
R3	RELSY 3 LIGHTS	I-F	INTAKE FILTERS	MB-1	MAIN BREAKER
R4	RELAY 4 HEATER	E-F	EXHAUST FILTERS	H	HEATER CONTACTOR
R5	RELAY 5 REMOTE RESET	-----	BY OTHERS	NB	NEUTRAL BLOCK
		HLS	HIGH LIMIT SWITCHS		
R9	RELAY 9 HEATER FAULT				
R10	RELAY 10 HEATER ON				



ALL DRAWINGS AND SPECIFICATIONS SHALL REMAIN THE PROPERTY OF CUREZONE INC. SHALL BE SURRENDERED UPON REQUEST. ALL INFORMATION CONTAINED HEREIN SHALL BE DEEMED CONFIDENTIAL. THESE DRAWING AND SPECIFICATION MAY NOT BE REPRODUCED, COPIED, EXPRESS, WRITTEN PERMISSION OF CUREZONE INC.

DRAWN Dante Mondragon

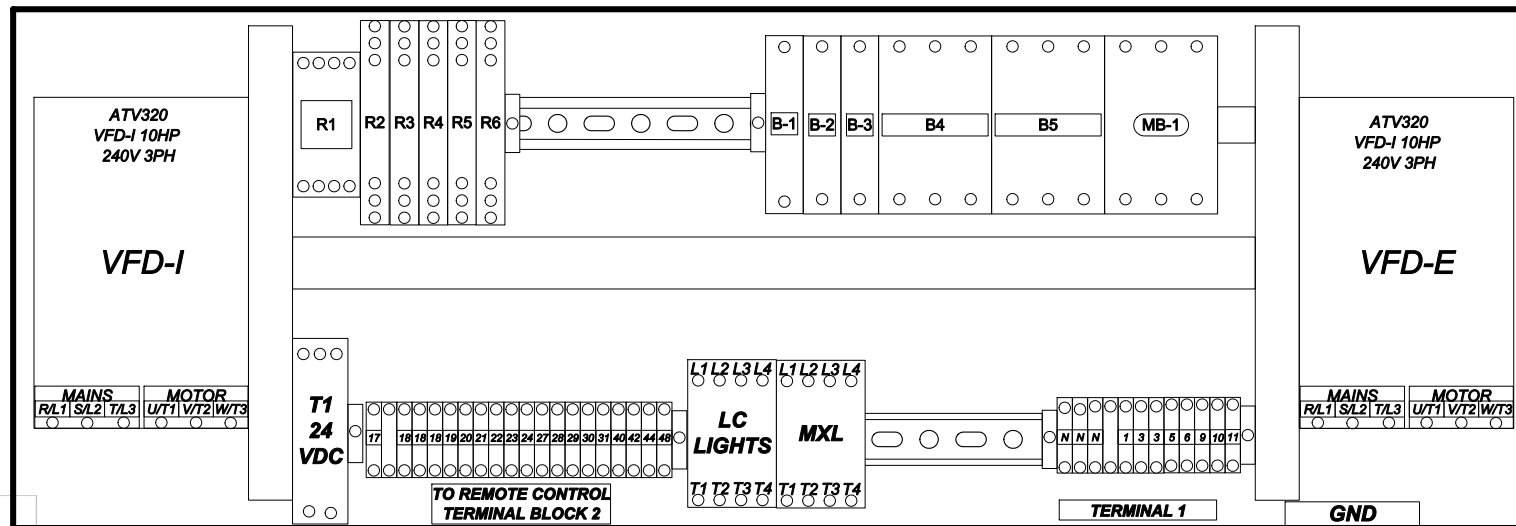
ISSUED CZ_V570_240V_3PH_10HP_10HP

SIZE	FSCM NO	DWG NO	REV
		2022	DM
SCALE	1 in : 1 in	LEGEND	SHEET
			8

BILL OF MATERIAL

ITEM	QTY.	MARK	PART NUMBER	ITEM DESCRIPTION	REMARKS
1	1	MB-1	E1043192	Mersen UL98 Non-fusible Disconnect Switch, Front operated, 3-pole, panel mount, 100A	UL
2	1	B1	MCB4-L40-1P-C6	Mini Circuit Breaker, UL 489, 1-Pole, 6A	UL
3	1	B2-B3	MCB4-L40-1P-C20	Mini Circuit Breaker, UL 489, 1-Pole, 20A	UL
4	1	B3	MCB4-L2D-3P-C35	Mini Circuit Breaker, UL 489, 3-Pole, 35A	UL
5	1	B4	MCB4-L2D-3P-C35	Mini Circuit Breaker, UL 489, 3-Pole, 35A	UL
6	1	VFD-I	ATV320U22M3C	ATV320 Compact drive IP20 3PH-240V 3PH	UL
7	1	VFD-E	ATV320U22M3C	ATV320 Compact drive IP20 3PH-240V 3PH	UL
8	1	T1	PS5R-VC24	Power Supply 30W 24VDC DIN	UL
9	1	R1	MY4-AC110/120	Omron General Purpose Relay, 120V AC Coil	UL
10	1		PYF14AE	Omron Relay Socket	UL
11	4	R2-R6	RV8H-L-D24	IDEC Relay RV 6mm Assembled 24vdc	UL
12	1	LC	LC1D09KUE	TeSys D Contactor 9A 100-250VAC/DC	UL
13	23		115 116 07	Terminal Block Gray	UL
14	2		118 368 16	FEM6 Grey end section	UL
15	8		206 351 16	BAM2 End Stop Grey Din 3	UL
16	1	GND	PK23GTA	Equipment Grounding Bar kit	UL
17	1	V570	V570-57-T20B-J	Vision 570 Operator interface, 5.7" TFT Display, Flat	UL
18	1	V200	V200-18-E3XC	I/O Outputs and Inputs	UL
19	1	HSL	39121549	High Limit Switch 212F SetPoint	UL
20	1	TCK	TTW00181	Thermocouple Type K 6" Probe Length	UL
21	1				
22	1				
23	1				
24	1				

HLS



ALL DRAWINGS AND SPECIFICATIONS SHALL REMAIN THE PROPERTY OF CUREZONE INC. SHALL BE SURRENDERED UPON REQUEST. ALL INFORMATION CONTAINED HEREIN SHALL BE DEEMED CONFIDENTIAL. THESE DRAWING AND SPECIFICATION MAY NOT BE REPRODUCED, COPIED EXPRESS, WRITTEN PERMISSION OF CUREZONE INC

DRAWN Dante Mondragon

ISSUED CZ_V570_240V_3PH_10HP_10HP

SIZE	FSCM NO	DWG NO	REV
		2022	DM
SCALE	1 in : 1 in	BOM	SHEET
			9