



DESSERTO

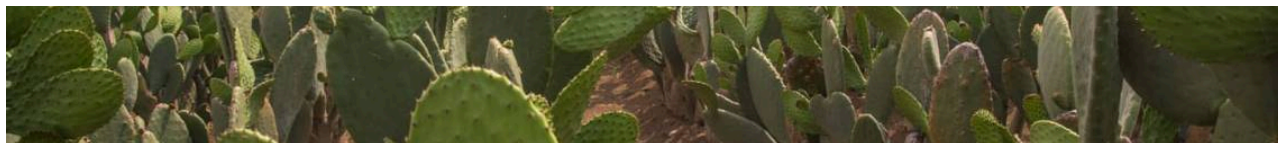
CATALOGUE 2025



A D R I A N O D I M A R T I

Being conscious of the negative impact that industries are causing to the environment through the use of animal and synthetic leather, and the lack of sustainable alternative materials available to meet an ever-growing industrial demand, we created Desserto®, a sustainable, cactus-based biomaterial often distinguished by its remarkable softness to the touch and its performance across a wide variety of applications, while complying with the most rigorous quality and environmental standards in the industry. Desserto®, headquartered in Guadalajara, México, will be celebrating its seventh anniversary in April 2026.

Since its official launch, it has received important international awards such as the Green Product Award, MCFW Sustainable Fashion Award, PETA Compassionate Business Award, Good Design Award, Innovation Award by Architectural Digest and Samsung, and the USDA BioPreferred Program Champion. It also received a special mention as second runner-up and category favorite for materials at the LVMH Innovation Award. Desserto® is committed to creating new sustainable solutions and promoting ethical practices throughout industry value chains, helping build a better and more responsible fashion industry.



MADE IN MEXICO

EXW
Mexico

DESSERTO **CACTUS**[®] - BASED BIOMATERIALS

These materials are characterized for being suitable for a wide range of applications from accessories, handbags, garments and residential furniture. If you're interested in requesting a customized finish, contact your commercial executive. **NEW RELEASES:** Desserto materials create based on seasonal trends and subject to stock availability.



ELASTICITY	●	●	●	○	○
SOFTNESS	●	●	●	●	○
GLOSS	●	●	●	●	○
MATE	●	●	●	●	●
RECYCLED	●	○	○	○	○
BIO+	●	●	●	●	○

SKU: 10123

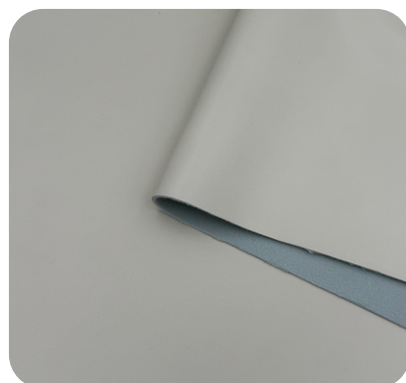
COLOR: BLACK
TEXTURE: ROCKPORT
PRICE: \$12 USD/LM (1X1.4M)
THICKNESS: 0.5 MM (+/- 10%)
BACKING: 100% POLYESTER
BACKING TYPE: KNIT
LIMITED STOCK



ELASTICITY	●	●	●	●	○
SOFTNESS	●	●	●	●	○
GLOSS	●	●	●	●	○
MATE	●	●	○	○	○
RECYCLED	●	●	○	○	○
BIO+	●	●	●	○	○

SKU: 70002

COLOR: BONE AGAVE
TEXTURE: DANIELLA
PRECE: \$15 USD/LM (1X1.4M)
THICKNESS: 1.2 MM (+/- 10%)
BACKING: 100% POLYESTER
BACKING TYPE: KNIT
LIMITED STOCK



ELASTICITY	●	●	●	●	○
SOFTNESS	●	●	●	●	○
GLOSS	●	●	●	○	○
MATE	●	●	●	○	○
RECYCLED	●	●	○	○	○
BIO+	●	●	●	●	○

SKU: 70003

COLOR: BLUE AGAVE
TEXTURE: DOLLARO
PRECE: \$15 USD/LM (1X1.4M)
THICKNESS: 1.4 MM (+/- 10%)
BACKING: 100% POLYESTER
BACKING TYPE: KNIT
LIMITED STOCK



Ced (MJ) Cumulative Energy Demand
Cradle to gate (per m2 leather)
*-Desserto 34.33
-Animal leather 335.84
-PU 92.93



GHG Carbon (KGC02EQ.)
Cradle to gate (per m2 leather)
*-Desserto 1.39
-Animal leather 27.30
-PU 4.81



Water Use (M3)
Cradle to gate (per m2 leather)
*-Desserto 0.02
-Animal leather 32.95
-PU 2.93



Ghg Carbon With Waste Incineration (KGC02EQ.)
Cradle to gate (per m2 leather)
*-Desserto 1.80
-Animal leather 27.30
-PU 5.85



MADE IN MEXICO

EXW
Mexico

DESSERTO **CACTUS**[®] - BASED BIOMATERIALS

These materials are characterized for being suitable for a wide range of applications from accessories, handbags, garments and residential furniture. If you're interested in requesting a customized finish, contact your commercial executive. **NEW RELEASES:** Desserto materials create based on seasonal trends and subject to stock availability.



SKU: 10012

COLOR: BLACK
TEXTURE: RUSTIC
PRECE: \$19 USD/LM (1X1.4M)
THICKNESS: 0.5 MM (+/- 10%)
BACKING: 100% RECYCLED POLIÉSTER
BACKING TYPE: KNIT



SKU: 70001

COLOR: BLACK
TEXTURE: COACHMAN
PRICE: \$18 USD/LM (1X1.4M)
THICKNESS: 1.2 MM (+/- 10%)
BACKING: 100% POLYESTER
BACKING TYPE: KNIT
LIMITED STOCK



SKU: 10121

COLOR: MOCHA MOUSSE
TEXTURE: CABRETA
PRECE: \$24 USD/LM (1X1.4M)
THICKNESS: 1.6 MM (+/- 10%)
BACKING: 100% POLYESTER
BACKING TYPE: NON WOVEN
LIMITED STOCK



Ced (MJ) Cumulative Energy Demand
 Cradle to gate (per m2 leather)
 *-Desserto 34.33
 -Animal leather 335.84
 -PU 92.93



GHG Carbon (KGC02EQ.)
 Cradle to gate (per m2 leather)
 *-Desserto 1.39
 -Animal leather 27.30
 -PU 4.81



Water Use (M3)
 Cradle to gate (per m2 leather)
 *-Desserto 0.02
 -Animal leather 32.95
 -PU 2.93



Ghg Carbon With Waste Incineration (KGC02EQ.)
 Cradle to gate (per m2 leather)
 *-Desserto 1.80
 -Animal leather 27.30
 -PU 5.85

MADE IN MEXICO

EXW
Mexico

DESSERTO **CACTUS**[®] - BASED BIOMATERIALS

These materials are characterized for being suitable for a wide range of applications from accessories, handbags, garments and residential furniture. If you're interested in requesting a customized finish, contact your commercial executive. **NEW RELEASES:** Desserto materials create based on seasonal trends and subject to stock availability.



ELASTICITY	●●●●○
SOFTNESS	●●●●●
GLOSS	●●●○○
MATE	●●●○○
RECYCLED	●●●●●
BIO+	●●●○○

SKU: 10116

COLOR: BLACK
TEXTURE: FREEPORT
PRICE: \$28 USD/LM (1X1.4M)
THICKNESS: 0.60 MM (+/- 10%)
BACKING: 100% RECYCLED NYLON
BACKING TYPE: KNIT
LIMITED STOCK



ELASTICITY	●●●●○
SOFTNESS	●●●●●
GLOSS	●●●○○
MATE	●●○○○
RECYCLED	●●●●●
BIO+	●●●○○

SKU: 10118

COLOR: BLACK
TEXTURE: FREEPORT MATTE
PRICE: \$28 USD/LM (1X1.4M)
THICKNESS: 0.60 MM (+/- 10%)
BACKING: 100% RECYCLED NYLON
BACKING TYPE: KNIT
LIMITED STOCK



ELASTICITY	●●●○○
SOFTNESS	●●●●●
GLOSS	●●●○○
MATE	●○○○○
RECYCLED	●●○○○
BIO+	●●●○○

SKU: 10130

COLOR: OCEAN BLUE
TEXTURE: ROCKPORT
PRICE: \$28 USD/LM (1X1.4M)
THICKNESS: 1 MM (+/- 10%)
BACKING: 50% POLIESTER/
50% COTTON
BACKING TYPE: KNIT
LIMITED STOCK



Ced (MJ) Cumulative Energy Demand
Cradle to gate (per m2 leather)
*-Desserto 34.33
-Animal leather 335.84
-PU 92.93



GHG Carbon (KGC02EQ.)
Cradle to gate (per m2 leather)
*-Desserto 1.39
-Animal leather 27.30
-PU 4.81



Water Use (M3)
Cradle to gate (per m2 leather)
*-Desserto 0.02
-Animal leather 32.95
-PU 2.93



Ghg Carbon With Waste Incineration (KGC02EQ.)
Cradle to gate (per m2 leather)
*-Desserto 1.80
-Animal leather 27.30
-PU 5.85

The customer is responsible to test the product before using it, to confirm that the material is adequate for the process and final product use.
*White tones and/or similar colors are subject to higher variations due to the natural color of the cactus used in the material production. These variations do not constitute manufacturing defects but are inherent to the sourcing and processing of the biomaterial; therefore, they shall not be considered grounds for claims.

MADE IN MEXICO

EXW
Mexico

DESSERTO CACTUS® - BASED BIOMATERIALS

These materials are characterized for being suitable for a wide range of applications from accessories, handbags, garments and residential furniture. If you're interested in requesting a customized finish, contact your commercial executive. NEW RELEASES: Desserto materials create based on seasonal trends and subject to stock availability.



ELASTICITY	●●●○○
SOFTNESS	●●●●●
GLOSS	●○○○○
MATE	●●●●●
RECYCLED	●●○○○
BIO+	●●●●○

SKU: 10002

COLOR: BLACK
TEXTURE: ROCKPORT
PRICE: \$30 USD/LM (1X1.4M)
THICKNESS: 1.0 MM (+/- 10%)
BACKING: 50% POLIESTER/
 50% COTTON
BACKING TYPE: KNIT
MOQ: NO



ELASTICITY	●●●○○
SOFTNESS	●●●●●
GLOSS	●●●●○
MATE	●●○○○
RECYCLED	●●○○○
BIO+	●●●●○

SKU: 10005

COLOR: GREEN
TEXTURE: HELEN
PRECE: \$30 USD/LM (1X1.4M)
THICKNESS: 1.0 MM (+/- 10%)
BACKING: 50% POLIESTER/
 50% COTTON
BACKING TYPE: KNIT
MOQ: NO



ELASTICITY	●○○○○
SOFTNESS	●●●○○
GLOSS	●●●○○
MATE	●●●○○
RECYCLED	●○○○○
BIO+	●●●●○

SKU: 10011

COLOR: BLACK
TEXTURE: FREEPORT
PRECE: \$32 USD/LM (1X1.4M)
THICKNESS: 1.0 MM (+/- 10%)
BACKING: 100% COTTON
BACKING TYPE: WOVEN
MOQ: NO



Ced (MJ) Cumulative Energy Demand
 Cradle to gate (per m2 leather)
 *-Desserto 34.33
 -Animal leather 335.84
 -PU 92.93



GHG Carbon (KGC02EQ.)
 Cradle to gate (per m2 leather)
 *-Desserto 1.39
 -Animal leather 27.30
 -PU 4.81



Water Use (M3)
 Cradle to gate (per m2 leather)
 *-Desserto 0.02
 -Animal leather 32.95
 -PU 2.93



Ghg Carbon With Waste Incineration (KGC02EQ.)
 Cradle to gate (per m2 leather)
 *-Desserto 1.80
 -Animal leather 27.30
 -PU 5.85



MADE IN MEXICO

EXW
Mexico

DESSERTO **CACTUS**[®] - BASED BIOMATERIALS

These materials are characterized for being suitable for a wide range of applications from accessories, handbags, garments and residential furniture. If you're interested in requesting a customized finish, contact your commercial executive. **NEW RELEASES:** Desserto materials create based on seasonal trends and subject to stock availability.



ELASTICITY	●	○	○	○	○
SOFTNESS	●	●	●	○	○
GLOSS	●	●	●	○	○
MATE	●	●	●	○	○
RECYCLED	●	○	○	○	○
BIO+	●	●	●	●	○

SKU: 10025

COLOR: FERRERO
TEXTURE: FREEPORT
PRICE: \$34 USD/LM (1X1.4M)
THICKNESS: 1 MM (+/- 10%)
BACKING: 100% COTTON
BACKING TYPE: WOVEN
LIMITED STOCK



ELASTICITY	●	○	○	○	○
SOFTNESS	●	●	●	○	○
GLOSS	●	●	●	○	○
MATE	●	●	●	○	○
RECYCLED	●	○	○	○	○
BIO+	●	●	●	●	○

SKU: 10028

COLOR: BROWN BITONE
TEXTURE: FREEPORT
PRICE: \$35 USD/LM (1X1.4M)
THICKNESS: 1.0 MM (+/- 10%)
BACKING: 100% COTTON
BACKING TYPE: WOVEN
LIMITED STOCK



ELASTICITY	●	○	○	○	○
SOFTNESS	●	●	●	○	○
GLOSS	●	●	●	○	○
MATE	●	●	●	○	○
RECYCLED	●	○	○	○	○
BIO+	●	●	●	●	○

SKU: 10107

COLOR: SANDSHELL
TEXTURE: FREEPORT
PRICE: \$34 USD/LM (1X1.4M)
THICKNESS: 1 MM (+/- 10%)
BACKING: 100% COTTON
BACKING TYPE: WOVEN
LIMITED STOCK



Ced (MJ) Cumulative Energy Demand
Cradle to gate (per m2 leather)
*-Desserto 34.33
-Animal leather 335.84
-PU 92.93



GHG Carbon (KGC02EQ.)
Cradle to gate (per m2 leather)
*-Desserto 1.39
-Animal leather 27.30
-PU 4.81



Water Use (M3)
Cradle to gate (per m2 leather)
*-Desserto 0.02
-Animal leather 32.95
-PU 2.93



Ghg Carbon With Waste Incineration (KGC02EQ.)
Cradle to gate (per m2 leather)
*-Desserto 1.80
-Animal leather 27.30
-PU 5.85



MADE IN MEXICO

EXW
Mexico

DESSERTO CACTUS® - BASED BIOMATERIALS

These materials are characterized for being suitable for a wide range of applications from accessories, handbags, garments and residential furniture. If you're interested in requesting a customized finish, contact your commercial executive. NEW RELEASES: Desserto materials create based on seasonal trends and subject to stock availability.



ELASTICITY	●●●●○
SOFTNESS	●●●○○
GLOSS	●●●●○
MATE	●○○○○
RECYCLED	●●●●●
BIO+	●●●●○

SKU:20102

COLOR: PINK
TEXTURE: HELEN
PRICE: \$17 USD/LM (1X1.4M)
THICKNESS: 0.5 MM (+/- 10%)
BACKING: 100% RECYCLED POLYESTER
BACKING TYPE: KNIT
LIMITED STOCK



ELASTICITY	●●●○○
SOFTNESS	●●●●●
GLOSS	●○○○○
MATE	●●●●○
RECYCLED	●●●●○
BIO+	●●●●○

SKU: 10098

COLOR: OLIVE
TEXTURE: SAFFIANO
PRICE: \$32 USD/LM (1X1.4M)
THICKNESS: 1.3 MM (+/- 10%)
BACKING: 50% POLIESTER 50% COTTON
BACKING TYPE: KNIT
LIMITED STOCK



ELASTICITY	●○○○○
SOFTNESS	●●●○○
GLOSS	●●●○○
MATE	●●●○○
RECYCLED	●○○○○
BIO+	●●●●○

SKU: 10108

COLOR: PINE GREEN
TEXTURE: FREEPORT
PRECE: \$33 USD/LM (1X1.4M)
THICKNESS: 1.0 MM (+/- 10%)
BACKING: 100% COTTON
BACKING TYPE: WOVEN
MOQ: NO



Ced (MJ) Cumulative Energy Demand
Cradle to gate (per m2 leather)
*-Desserto 34.33
-Animal leather 335.84
-PU 92.93



GHG Carbon (KGC02EQ.)
Cradle to gate (per m2 leather)
*-Desserto 1.39
-Animal leather 27.30
-PU 4.81



Water Use (M3)
Cradle to gate (per m2 leather)
*-Desserto 0.02
-Animal leather 32.95
-PU 2.93



Ghg Carbon With Waste Incineration (KGC02EQ.)
Cradle to gate (per m2 leather)
*-Desserto 1.80
-Animal leather 27.30
-PU 5.85



MADE IN MEXICO

EXW
Mexico

DESSERTO **CACTUS**[®] - BASED BIOMATERIALS

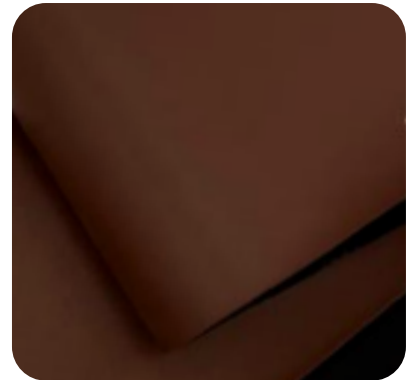
These materials are characterized for being suitable for a wide range of applications from accessories, handbags, garments and residential furniture. If you're interested in requesting a customized finish, contact your commercial executive. **NEW RELEASES:** Desserto materials create based on seasonal trends and subject to stock availability.



ELASTICITY	●	○	○	○	○
SOFTNESS	●	●	●	○	○
GLOSS	●	●	●	○	○
MATE	●	●	●	○	○
RECYCLED	●	○	○	○	○
BIO+	●	●	●	●	○

SKU: 10126

COLOR: MEDIUM BROWN
TEXTURE: FREEPORT
PRICE: \$34 USD/LM (1X1.4M)
THICKNESS: 1 MM (+/- 10%)
BACKING: 100% COTTON
BACKING TYPE: WOVEN
 LIMITED STOCK



ELASTICITY	●	○	○	○	○
SOFTNESS	●	●	●	○	○
GLOSS	●	●	●	○	○
MATE	●	●	●	○	○
RECYCLED	●	○	○	○	○
BIO+	●	●	●	●	○

SKU:10125

COLOR: MEDIUM BROWN
TEXTURE: ROCKPORT
PRICE: \$34 USD/LM (1X1.4M)
THICKNESS: 1 MM (+/- 10%)
BACKING: 100% COTTON
BACKING TYPE: WOVEN
 LIMITED STOCK



ELASTICITY	●	○	○	○	○
SOFTNESS	●	●	●	●	○
GLOSS	●	●	●	○	○
MATE	●	●	●	○	○
RECYCLED	●	○	○	○	○
BIO+	●	●	●	●	○

SKU: 30001

COLOR: BLACK
TEXTURE: FREEPORT
PRECE: \$47 USD/LM (1X1.4M)
THICKNESS: 1.3 MM (+/- 10%)
BACKING: 100% COTTON
BACKING TYPE: WOVEN
MOQ: NO



Ced (MJ) Cumulative Energy Demand
 Cradle to gate (per m2 leather)
 *-Desserto 34.33
 -Animal leather 335.84
 -PU 92.93



GHG Carbon (KGC02EQ.)
 Cradle to gate (per m2 leather)
 *-Desserto 1.39
 -Animal leather 27.30
 -PU 4.81



Water Use (M3)
 Cradle to gate (per m2 leather)
 *-Desserto 0.02
 -Animal leather 32.95
 -PU 2.93



Ghg Carbon With Waste Incineration (KGC02EQ.)
 Cradle to gate (per m2 leather)
 *-Desserto 1.80
 -Animal leather 27.30
 -PU 5.85



MADE IN MEXICO

EXW
Mexico

DESSERTO **CACTUS**[®] - BASED BIOMATERIALS

These materials are characterized for being suitable for a wide range of applications from accesories, handbags, garments and residential furniture. If you're interested in requesting a customized finish, contact your commercial executive. **NEW RELEASES:** Desserto materials create based on seasonal trends and subject to stock availability.



ELASTICITY	●●●○○
SOFTNESS	●●●●●
GLOSS	●●●●○
MATE	●●○○○
RECYCLED	●●○○○
BIO+	●●●●○

SKU: 60001

COLOR: BLACK
TEXTURE: HELEN
PRECE: \$45 USD/LM (1X1.4M)
THICKNESS: 1.2 MM (+/- 10%)
BACKING: 100% RECYCLED COTTON
BACKING TYPE: KNIT
MOQ: NO



ELASTICITY	●●●○○
SOFTNESS	●●●●●
GLOSS	●○○○○
MATE	●●●●●
RECYCLED	●○○○○
BIO+	●●●●○

SKU:60002

COLOR: BLACK
TEXTURE: ROMA
PRECE: \$40 USD/LM (1X1.4M)
THICKNESS: 1.26 MM (+/- 10%)
BACKING: 100% RECYCLED COTTON
BACKING TYPE: KNIT
LIMITED STOCK



Ced (MJ) Cumulative Energy Demand
 Cradle to gate (per m2 leather)
 *-Desserto 34.33
 -Animal leather 335.84
 -PU 92.93



GHG Carbon (KGC02EQ.)
 Cradle to gate (per m2 leather)
 *-Desserto 1.39
 -Animal leather 27.30
 -PU 4.81



Water Use (M3)
 Cradle to gate (per m2 leather)
 *-Desserto 0.02
 -Animal leather 32.95
 -PU 2.93



Ghg Carbon With Waste Incineration (KGC02EQ.)
 Cradle to gate (per m2 leather)
 *-Desserto 1.80
 -Animal leather 27.30
 -PU 5.85



MADE IN MEXICO

EXW
Mexico

DESSERTO **AGAVE**® - BASED BIOMATERIALS

Desserto Agave is a sustainable, plant-based material crafted from tequila production by-product. It is dedicated to the beverage industry and ideal for hospitality applications such as accessories, aprons, bags, boxes and promotionals.



ELASTICITY	●●●○○
SOFTNESS	●●●●○
GLOSS	●●○○○
MATE	●●●○○
RECYCLED	●●●●●
BIO+	●●●●○

SKU: 80001

COLOR: BLACK
TEXTURE: CABOT
PRECE: \$40 USD/LM (1X1.4M)
THICKNESS: 1.3 MM (+/- 10%)
BACKING: 100% RECYCLED COTTON
BACKING TYPE: KNIT
 LIMITED STOCK



ELASTICITY	●●●○○
SOFTNESS	●●●●○
GLOSS	●●○○○
MATE	●●●○○
RECYCLED	●●●●●
BIO+	●●●●○

SKU: 80002

COLOR: CLAY
TEXTURE: CABOT
PRECE: \$40 USD/LM (1X1.4M)
THICKNESS: 1.3 MM (+/- 10%)
BACKING: 100% RECYCLED COTTON
BACKING TYPE: KNIT
 LIMITED STOCK



Ced (MJ) Cumulative Energy Demand

Cradle to gate (per m2 leather)
 *-Desserto 34.33
 -Animal leather 335.84
 -PU 92.93



GHG Carbon (KGC02EQ.)

Cradle to gate (per m2 leather)
 *-Desserto 1.39
 -Animal leather 27.30
 -PU 4.81



Water Use (M3)

Cradle to gate (per m2 leather)
 *-Desserto 0.02
 -Animal leather 32.95
 -PU 2.93



Ghg Carbon With Waste Incineration (KGC02EQ.)

Cradle to gate (per m2 leather)
 *-Desserto 1.80
 -Animal leather 27.30
 -PU 5.85



MADE IN ITALY

EXW
Italy

DESSERTO CACTUS® - BASED BIOMATERIALS

Desserto materials produced in Italy and created for general and footwear applications



ELASTICITY	●	○	○	○	○
SOFTNESS	●	●	○	○	○
GLOSS	●	●	●	○	○
MATE	●	●	●	○	○
RECYCLED	●	○	○	○	○
BIO+	●	●	●	○	○

SKU: ITA-001

COLOR: *OFF WHITE
TEXTURE: FREEPORT
PRECE: \$33 EUR/LM (1X1.4M)
THICKNESS: 1.2 MM (+/- 10%)
BACKING: 55% POLYESTER/45% COTTON
BACKING TYPE: WOVEN



ELASTICITY	●	○	○	○	○
SOFTNESS	●	●	○	○	○
GLOSS	●	●	●	○	○
MATE	●	●	●	○	○
RECYCLED	●	○	○	○	○
BIO+	●	●	●	○	○

SKU: ITA-002

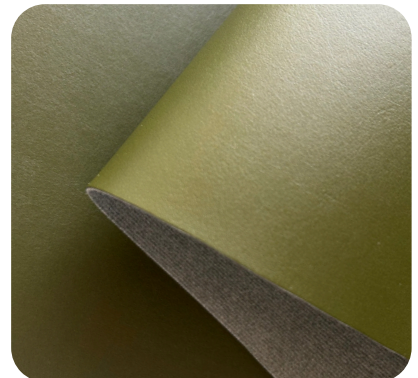
COLOR: BLACK
TEXTURE: RFREEPORT
PRICE: \$33 EUR/LM (1X1.4M)
THICKNESS: 1.2 MM (+/- 10%)
BACKING: 55% POLYESTER/45% COTTON
BACKING TYPE: WOVEN



ELASTICITY	●	○	○	○	○
SOFTNESS	●	●	○	○	○
GLOSS	●	●	●	○	○
MATE	●	●	●	○	○
RECYCLED	●	○	○	○	○
BIO+	●	●	●	○	○

SKU: ITA-012

COLOR: GREEN
TEXTURE: FREEPORT
PRICE: \$33 EUR/LM (1X1.4M)
THICKNESS: 1.2 MM (+/- 10%)
BACKING: 55% POLYESTER/45% COTTON
BACKING TYPE: WOVEN



Ced (MJ) Cumulative Energy Demand

Cradle to gate (per m2 leather)
 *-Desserto 34.33
 -Animal leather 335.84
 -PU 92.93



GHG Carbon (KGC02EQ.)

Cradle to gate (per m2 leather)
 *-Desserto 1.39
 -Animal leather 27.30
 -PU 4.81



Water Use (M3)

Cradle to gate (per m2 leather)
 *-Desserto 0.02
 -Animal leather 32.95
 -PU 2.93



Ghg Carbon With Waste Incineration (KGC02EQ.)

Cradle to gate (per m2 leather)
 *-Desserto 1.80
 -Animal leather 27.30
 -PU 5.85

The customer is responsible to test the product before using it, to confirm that the material is adequate for the process and final product use.

*White tones and/or similar colors are subject to higher variations due to the natural color of the cactus used in the material production. These variations do not constitute manufacturing defects but are inherent to the sourcing and processing of the biomaterial; therefore, they shall not be considered grounds for claims.



MADE IN ITALY

EXW
Italy

DESSERTO CACTUS® - BASED BIOMATERIALS

Desserto materials produced in Italy and created for general and footwear applications



ELASTICITY	● ○ ○ ○ ○
SOFTNESS	● ● ○ ○ ○
GLOSS	● ● ● ○ ○
MATE	● ● ○ ○ ○
RECYCLED	● ○ ○ ○ ○
BIO+	● ● ● ○ ○

SKU: ITA-046

COLOR: BLACK
TEXTURE: SAFFIANO
PRECE: \$33 EUR/LM (1X1.4M)
THICKNESS: 1.2 MM (+/- 10%)
BACKING: 55% POLYESTER/45% COTTON
BACKING TYPE: WOVEN



ELASTICITY	● ● ● ○ ○
SOFTNESS	● ● ● ○ ○
GLOSS	● ○ ○ ○ ○
MATE	● ● ● ● ○
RECYCLED	● ● ● ● ●
BIO+	● ● ● ○ ○

SKU: ITA-402

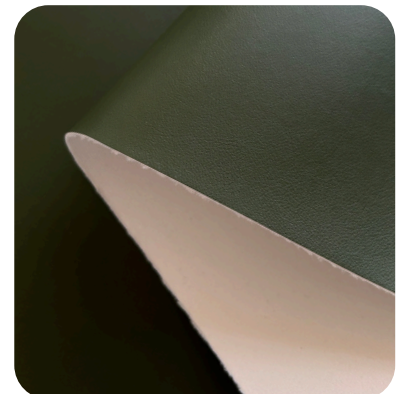
COLOR: BLACK
TEXTURE: ROCKPORT
PRECE: \$38 EUR/LM (1X1.4M)
THICKNESS: 1.3 MM (+/- 10%)
BACKING: 100% RECYCLED POLYESTER
BACKING TYPE: KNIT



ELASTICITY	● ● ● ○ ○
SOFTNESS	● ● ● ○ ○
GLOSS	● ● ● ● ○
MATE	● ○ ○ ○ ○
RECYCLED	● ● ● ● ●
BIO+	● ● ● ○ ○

SKU: ITA-411

COLOR: GREEN
TEXTURE: HELEN
PRECE: \$38 EUR/LM (1X1.4M)
THICKNESS: 1.3 MM (+/- 10%)
BACKING: 100% RECYCLED POLYESTER
BACKING TYPE: KNIT



Ced (MJ) Cumulative Energy Demand
 Cradle to gate (per m2 leather)
 *-Desserto 34.33
 -Animal leather 335.84
 -PU 92.93



GHG Carbon (KGC02EQ.)
 Cradle to gate (per m2 leather)
 *-Desserto 1.39
 -Animal leather 27.30
 -PU 4.81



Water Use (M3)
 Cradle to gate (per m2 leather)
 *-Desserto 0.02
 -Animal leather 32.95
 -PU 2.93



Ghg Carbon With Waste Incineration (KGC02EQ.)
 Cradle to gate (per m2 leather)
 *-Desserto 1.80
 -Animal leather 27.30
 -PU 5.85

MADE IN ITALY

EXW
Italy

DESSERTO CACTUS® - BASED BIOMATERIALS

Desserto materials produced in Italy and created for general and footwear applications



ELASTICITY	●●●○○
SOFTNESS	●●●○○
GLOSS	●●●●○
MATE	●○○○○
RECYCLED	●●●●●
BIO+	●●●○○

SKU: ITA-443

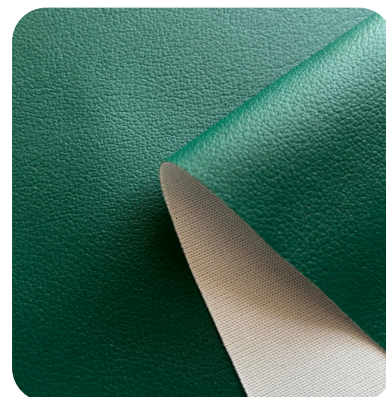
COLOR: SANDSHELL
TEXTURE: FREEPORT
PRECE: \$36 EUR/LM (1X1.4M)
THICKNESS: 1 MM (+/- 10%)
BACKING: 100% RECYCLED POLYESTER
BACKING TYPE: KNIT



ELASTICITY	●●●○○
SOFTNESS	●●●○○
GLOSS	●●●○○
MATE	●●○○○
RECYCLED	●●●●●
BIO+	●●●○○

SKU: ITA-10013

COLOR: GREEN
TEXTURE: R86
PRECE: \$23 EUR/LM (1X1.4M)
THICKNESS: 0.5 MM (+/- 10%)
BACKING: 100% RECYCLED POLYESTER
BACKING TYPE: KNIT



Ced (MJ) Cumulative Energy Demand
 Cradle to gate (per m2 leather)
 *-Desserto 34.33
 -Animal leather 335.84
 -PU 92.93



GHG Carbon (KGC02EQ.)
 Cradle to gate (per m2 leather)
 *-Desserto 1.39
 -Animal leather 27.30
 -PU 4.81



Water Use (M3)
 Cradle to gate (per m2 leather)
 *-Desserto 0.02
 -Animal leather 32.95
 -PU 2.93



Ghg Carbon With Waste Incineration (KGC02EQ.)
 Cradle to gate (per m2 leather)
 *-Desserto 1.80
 -Animal leather 27.30
 -PU 5.85

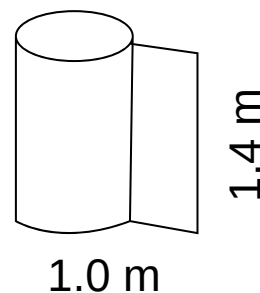
IMPORTANT TO KNOW



We offer a wide variety of materials free of Minimum Order Quantity (MOQ) and we can also customize materials to meet our customer's needs in terms of color, thickness, backing and performance. Please note that our prices are EXW, and shipping is not included. All stock materials are subject to change with out prior notice in terms of availability, price, thickness, color variation, texture, backing, etc. Any modification of a SKU shown at this catalogue is considered as bespoke project.

If you need a specific material for a long-term production, we suggest doing customized production in order to avoid any possible change. Each customization material comes with a MOQ according the volume requested:

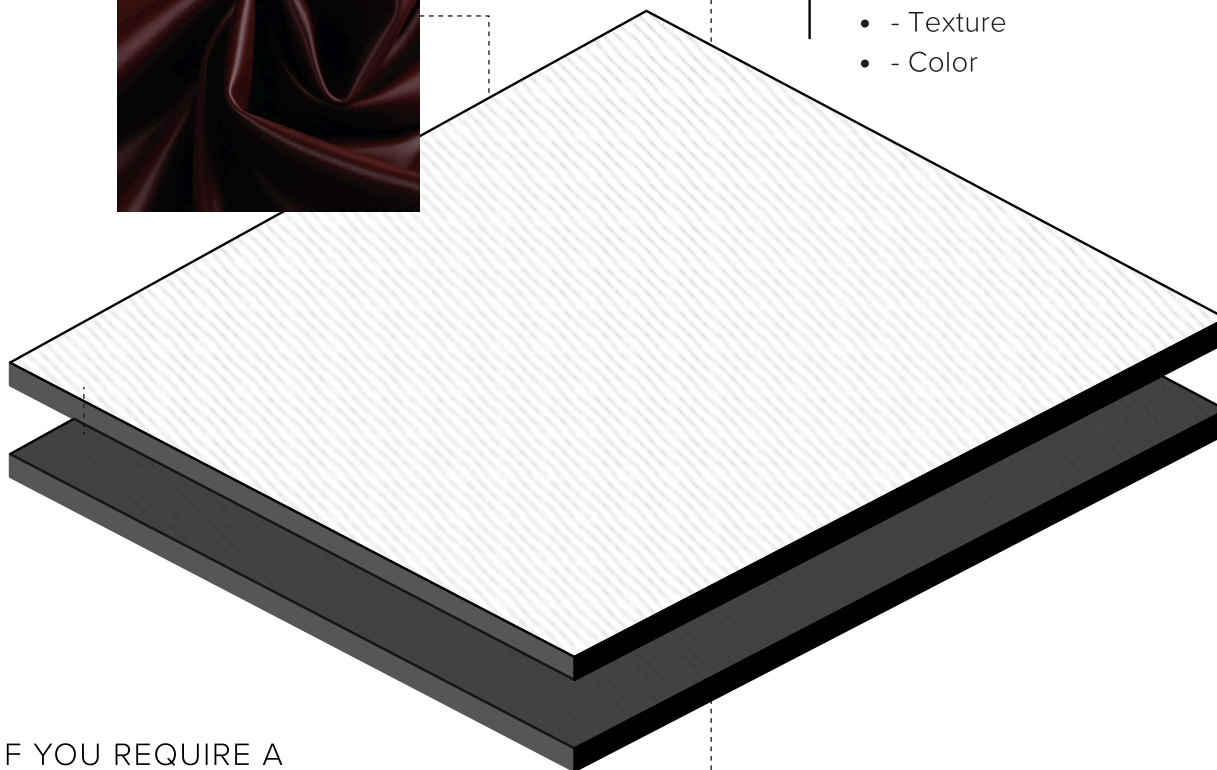
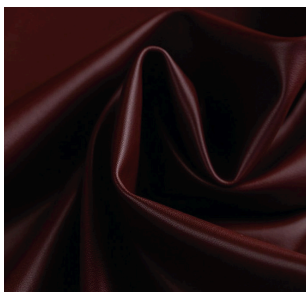
- - First customized production its required a MOQ of 300 lineal meters for mexican productions and 50 lineal meters for italian productions.
- - In Mexico, the second customized production its required a MOQ of 500 lineal meters. For Italian productions, the second customized production it's required a MOQ of 300 lineal meters.
- - Our linear meter size is 1 x 1.4 m (+/- 3%).



CUSTOMIZED MATERIALS

Customize our materials to meet your specific needs with a variety of options, ensuring the perfect fit for any project:

- - Backing Type
- - Mechanical Properties
- - Overall Resistance
- - Bio-Based Content
- - Thickness
- - Softness
- - Texture
- - Color



IF YOU REQUIRE A A CUSTOM MATERIAL

Your development will be subjected to a MOQ of 300 linear meters in Mexico and 50 linear meters in Italy.

A Lab Dip size sample will be developed for your approval prior to production, development fee is USD \$100.00 for aesthetics (per lab-dip or / and texture), if further technical characteristics are required, costs may vary.

CERTIFICATIONS AND COMPLIANCES



GLOBAL PRESS

VegNews **vegconomist** FASH ONUNITED

The Guardian **Forbes** **VOGUE** **BAZAR**

ICONIC COLLABORATIONS

FOSSIL **lululemon** **EVERLANE** **ALLSAINTS**



THE PERFECT BALANCE BETWEEN SUSTAINABILITY AND PERFORMANCE

TOP 10

SUSTAINABLE FACTS

OF DESSERTO'S ORGANIC CACTUS FEEDSTOCK:



1. Biodiversity amelioration in the region.
2. Reverts Land Use Change (LUC).
3. Enrichment of soil micro-flora and micro-fauna through native and typical organic cactus afforestation.
4. Huge savings in water as no irrigation is applied.
5. Environmental preservation as no chemicals are used like herbicides or pesticides.
6. Cactus is left unharmed to enable repeated harvesting from the same plant.
7. Energy savings by drying the feed-stock in a solarium.
8. No cross-industry conflict as the byproduct is directed to the food industry in an increased value form which is more attractive, and stimulates the agricultural sector to plant more cactus.
9. Full vision and traceability of the farm to ensure sustainable social practices.
10. Technological enhancements at the fields.

Cactus is a natural carbon sink, it has a great CO₂ absorption capacity. From our 14 acres, we are able to absorb 8,100 tons of CO₂/year, while at the farm we only generate 15.30 tons of CO₂ annually.

DESSERTO AGAVE

Innovative alternative to leather that reduces the production waste of Tequila — Limited edition

Tequila production has contributed to the agricultural and industrial development in Mexico, especially in the State of Jalisco. This innovation expands the economic benefits of the region and the people involved in the tequila value chain by creating conditions for economic development to thrive in harmony with the environment and society. Through this project, the agave- tequila production chain has the opportunity to join the fashion industry in a sustainable and responsible way through a plant-based alternative to leather which features the by-product of the tequila industry.

From the tequila industry

Sustainability is the main objective of the Mexican company Adriano Di Marti, the developer of the cactus- based biomaterials as an alternative to leather Desserto (for the fashion industry) and Deserttex (for the automotive industry). Developing ambitious strategies and plans to remain as a leader in the biomaterials industry has lead to a new limited edition Desserto variant made out of Agave to be launched this summer 2023.

Tequila joins fashion

Tequila production has contributed to the agricultural and industrial development in Mexico, especially in the State of Jalisco. This innovation expands the economic benefits of the region and the people involved in the tequila value chain by creating conditions for economic development to thrive in harmony with the environment and society. Through this project, the agave- tequila production chain has the opportunity to join the fashion industry in a sustainable and responsible way.

A gift from Mexico to the world'

For the tequila industry it is clear that to maintain and protect the Appellation of Origin it is fundamental to preserve a healthy and clean environment. In this regard, the agave- tequila production chain's interest are perfectly aligned with Adriano Di Marti's commitment to preserve natural resources for future generations.

Adriano Di Marti company has been committed from its conception to an ambitious objective to become a low carbon solution provider in the biomaterials industry. In this process, the tequila industry can play an important role. Being the most representative product of the country and 'a gift from Mexico to the world', tequila must become a gift produced with care regarding the holistic sustainability principles. The time that the Agave plant spends in the field goes from 6 to 7 years. Then, the agave is turned into tequila. The fiber instead of being wasted its given the chance to be up-cycled for making the limited edition Desserto Agave biomaterials as an alternative to leather.





DESSERTO
CATALOGUE
2026

DESSERTO CARE |

Caring of your
Desserto fabric

This product is highly organic, and as your skin it requires care[®]

Use only water base adhesive, do not use solvents.

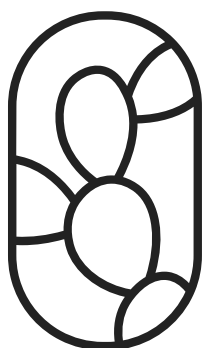
- To maintain clean materials and with a good appearance, use a mild soap solution and remove it completely using white cotton cloth dampened in water. All light colors require more frequent cleaning.
- Do not clean with solvents such as alcohol, acetone, paint thinner, bleach, oils, vinegar, waxes, silicones, armor all, stove (continental soda) or detergent cleaners, as these cause permanent damage in the material.
- Do not mark the furniture with an ink pen, ink could be absorbed into the product causing a permanent stain.
- For spills such as beer, wine, juices, soft drinks liquor, coffee, tea or chocolate simply clean the stain with a solution of mild liquid shampoo type cleaner water, dilute according to the instructions for use. Rinse with a cloth soaked in water to remove completely the excess. Dry the surface with a dry white cotton cloth.
- Clean the spill soon as possible especially if liquid has strong color.
- Sauce stains should be cleaned immediately to prevent staining.
- Prevent contact with suntan oils. In case this happens clean as soon as possible with liquid soap, try shampoo.
- Our products are protected to not transfer color to other materials, however some accessories with poor coloration could transfer to our materials, if this happens, immediately wipe the stain with shampoo and a white cotton cloth.
- You can also use a solution of half water and half disinfectant. Preferably free of chlorine. Then rinse with water and dry.
- Use a solution using 0.5% hypochlorite of sodium in water, rinse with water and dry.

IMPORTANT TO KNOW...

- The customer is responsible to test the product before using it, to conform that the material is adequate for the process and final product use.
- Any warranty given by the clients to their final consumer without prior written agreement with Desserto remains under the strict responsibility of the client.
- The product data or thickness of the product at stock may vary without notice.
- The color deviation from lab dips and productions is $E < 2$.
- Desserto materials endure up to 170 degrees Celsius.



THANK YOU



@desserto.pelle



@desserto.pelle



@desserto.agave

www.desserto.com

Desserto Europe SRL

Via Savona 127A, 20144 Milano Italy

(+39) 348 459 7754

Adriano Di Marti S.A. de C.V.

Av. Faro #2350, Int 8l, Guadalajara, Jalisco. 44550

México (+52) 3328134267

info@desserto.com.mx