

STATEMENT OF QUALIFICATIONS FOR: CIVIL ENGINEERING SERVICES

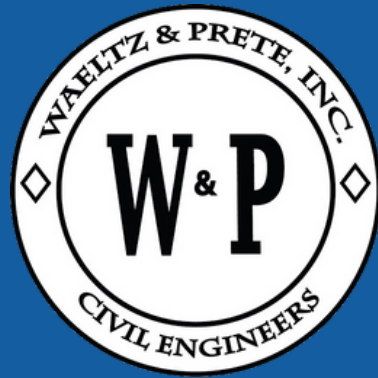
SUBMITTED BY:



WAELTZ & PRETE, INC.
CIVIL ENGINEERS

211 N. A.W. GRIMES BLVD.
ROUND ROCK, TX. 78665
PH (512) 505-8953
FIRM TX. REG. #F-10308





WAELTZ & PRETE, INC.
Civil Engineers
211 N. A.W. Grimes Blvd.
Round Rock, TX 78665
512.505.8953

FIRM INFORMATION

Waeltz & Prete is committed to providing you with the best engineering services. We approach every project with a focus on functionality, aesthetics, and cost. Waeltz & Prete has established itself as a leader in the industry. Ingenuity, an eye for solutions and a can do attitude make Waeltz & Prete the obvious choice for your engineering services.

In May of 2008, Mr. Bill Waeltz and Mr. Tony Prete formed the firm of Waeltz & Prete, Inc. – Civil Engineers, located at 3000 Joe DiMaggio Blvd., #72 in Round Rock, Texas. In 2013, Mr. Waeltz passed away after battling cancer. The firm still continues on bearing his name as a tribute.

Mr. Prete has 18 years of experience in engineering and project management here in **ROUND ROCK, TEXAS**. Mr. Prete is a licensed Engineer in the State of Texas & Oklahoma. Mr. Prete is the only licensed Professional Engineer in the firm, which puts Waeltz & Prete in the unique position to offer our clients Principal level experience and involvement throughout the entire project. His personal attention is given to all client relationships, project management, day to day operations, and design.

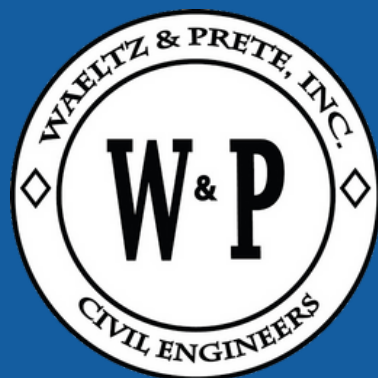
Waeltz & Prete are involved in civic and professional organizations. The firm is a member of both the Greater Austin Contractors & Engineers Association (ACEA) and the City of Round Rock's Chamber of Commerce. The firm routinely provides sponsorship for community organizations such as Hope Alliance and youth sports leagues. Additionally, the firm has specifically given back to the Round Rock community by



providing pro bono engineering services for the City's Play for All Abilities Park.

The firm's project experience includes water and wastewater improvements, roadway and street reconstruction, municipal and county roadway and infrastructure improvements, municipal parks and trail systems, commercial and residential development, drainage improvements, hydrology and hydraulics analysis, project management and construction administration services.

Based upon the firm's current work load, Waeltz & Prete would be able to begin work on this project immediately. The firm has a permanent staff of 5 employees.



WAELTZ & PRETE, INC.
Civil Engineers
211 N. A.W. Grimes Blvd.
Round Rock, TX 78665
512.505.8953



TECHNICAL EXPERTISE

Waeltz & Prete, Inc. has compiled an extremely qualified and experienced team of professionals to meet and exceed the needs of their clients. The following is a summary of the Firm's technical expertise and qualifications:

Project Management:

Waeltz & Prete is knowledgeable and experienced in managing construction projects from inception through construction. Our experience in the project management role includes the scoping of projects, contract negotiations, scheduling, and managing sub consultants. Additionally, as Project Managers, we have routinely prepared project construction budgets, production schedules, prepared permit applications and overseen the assembly of plans from sub consultants for the permit approval process. On past projects we have been the lead to secure permits from a wide variety of jurisdictions. Permits such as; construction permits for public and commercial improvements from local municipalities, utility and driveway permits for construction within State right-of-ways, construction permits within the Union Pacific Railroad right-of-way, approvals as related to floodplains from local Floodplain Administrators, approvals from the Texas Commission on Environmental Quality (TCEQ) for Water Pollution Abatement Plans, Sewerage Collections System Plans, and Storm Water Prevention Pollution Plans.

Public Involvement:

Waeltz & Prete has experience with public input and involvement. Our experience includes the preparation of exhibits for public meetings, meeting with citizens one-on-one, answering their questions, addressing their concerns, and acting as the liaison between the client and the public. We have the ability to coordinate, assist, and actively administer public input meetings.

Water and Wastewater Utility Design:

Waeltz & Prete have a considerable amount of experience in the design of water and wastewater systems. We are extensively knowledgeable with applicable design standards such as the City of Austin's Design and Construction Standards-Utility Criteria Manual, Texas Administrative Code [Title 30] Part1[Chapter 290 (Public Drinking Water) & Chapter 217 (Design Criteria for Sewerage Systems)].

Typical services that we have performed are the engineering analysis for water and wastewater distribution and collection systems. These types of analysis include utility line sizing and capacity analysis. Other services that we routinely provide are the planning of route alignments & configurations for water and wastewater lines. Our design expertise includes calculations for joint restraints and thrust blocking; placement of manholes, valves, and fire hydrants; selection of pipe materials; sizing of air/vacuum release valves, water meters, backflow preventers, pressure reducing valves; specifying precast concrete structures, remote transmitting units (RTU), concrete retards, boring and jacking, and lastly small lift station designs.





WAELTZ & PRETE, INC.
Civil Engineers
211 N. A.W. Grimes Blvd.
Round Rock, TX 78665
512.505.8953

TECHNICAL EXPERTISE

Drainage & Water Quality Design:

Waeltz and Prete have an overwhelming amount of experience in storm water management. Our experience includes the analysis and design of channels, floodplains, storm sewer systems, detention ponds, & water quality facilities.

We use the state of the art computer modeling systems to aid in our drainage designs. The software packages that we typically use in our drainage analysis are: Army Corps of Engineer's HEC-HMS & HEC-RAS; Boss International's-Storm Net; Haestad Methods - Flow Master, Culvert Master, & Storm Cad.

Our engineering analysis and design expertise include the design and calculations for the planning of route alignments & configurations for storm sewer lines, storm sewer line sizing and capacity analysis, storm inlet capacity analysis, watershed analysis for detention ponds and outlet structure sizing, water quality designs for wet pond, sand filter ponds, bio-swales, and vegetative filter stripes.

Grading Design:

Waeltz and Prete have an extensive amount of grading experience. We have prepared grading plans for a multitude of projects. Examples of these projects are site plans with parking lots, park projects, and roads.



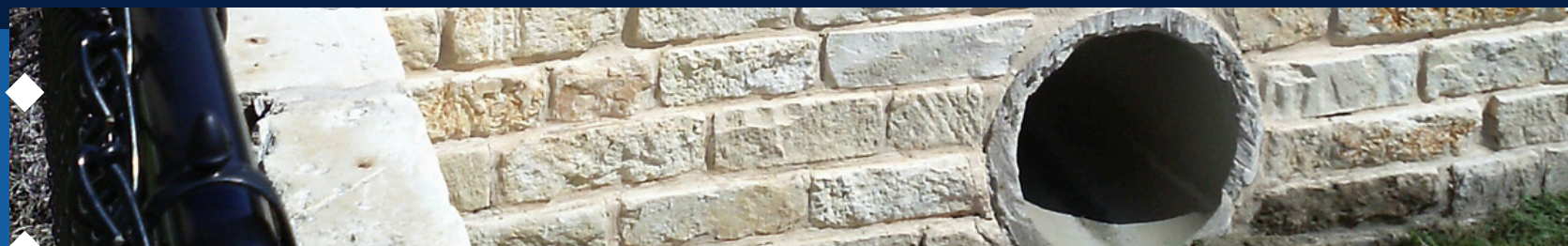
Our grading plans account for the requirements of the American Disabilities Act (ADA) & the Texas Department of Licensing and Regulations (TDLR), when required.

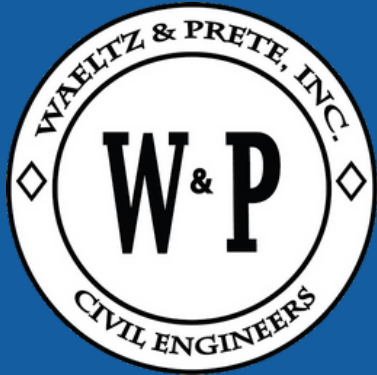
Miscellaneous Services:

Additional design/engineering work that is ancillary to the engineering design that we are qualified to perform are traffic control plans, development of Sewerage Collection System plans (SCS) and Water Pollution Abatement Plans (WPAP), preparation of erosion and sedimentation control plans and Storm Water Pollution Prevention Plans (SWPPP).

Contract and Construction Management:

Waeltz & Prete have an extensive amount of experience with Contract and Construction Management. We are well versed in the preparation of contract documents and specifications for the bidding process. Routine services that we provide are the posting of public notices to the bidders, administer the pre-bid meetings, monitor the bid opening, check contractor references, prepare bid tabulations, and make recommendations for awarding the project. During the construction process, we provide services to perform reviews of submittals and pay applications, administer progress meetings, prepare punch lists, determine substantial completion of the project, and oversee the preparation of "As-Built" plans.



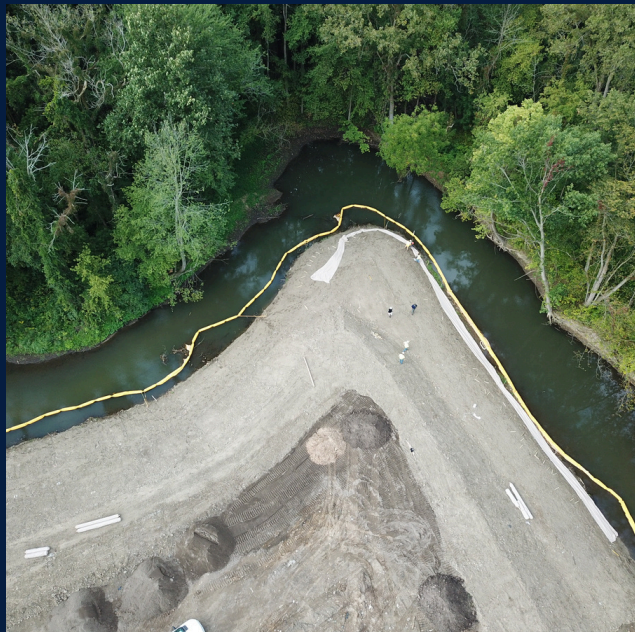


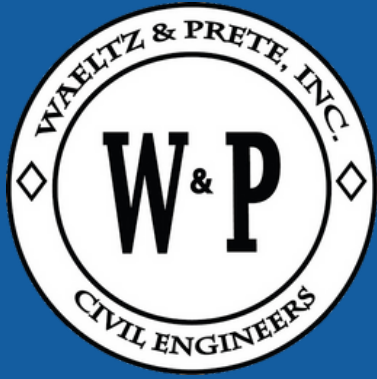
WAELTZ & PRETE, INC.
Civil Engineers
211 N. A.W. Grimes Blvd.
Round Rock, TX 78665
512.505.8953



TECHNICAL EXPERTISE

Waeltz & Prete, Inc. has the *Technical Expertise* and the resources to successfully complete the project in a timely manner.





WAELTZ & PRETE, INC.
Civil Engineers
211 N. A.W. Grimes Blvd.
Round Rock, TX 78665
512.505.8953

RESUME



Antonio A. Prete, P.E.
President - Waeltz & Prete, Inc.
Round Rock, Texas

Registration:

Professional Engineer (Texas #93759)- 2004
Professional Engineer (Oklahoma #24786)- 2010
Certified Floodplain Manager (CFM)-Certification No.0965-06N
Certified Professional in Erosion and Sedimentation Control (CPESC)-Certification No.5379

Education:

Bachelor of Science Civil Engineering, University of Texas at Austin- 1999

Continuing Education:

HEC-RAS, University of Texas Center for Life Long Engineering Education, 1999
HEC-RAS, Unsteady Flow (Advanced Features), University of Texas, 2001
HEC-HMS, Flood Plain Hydrology Systems, Haestad Methods, 2002
Storm Water Management: Permitting & Regulatory Overview Training course conducted at Texas A & M University, Bryan, Texas, 2003
FEMA Approval Process, Haestad Methods, 2003
404 Permit Training, US Army Corps of Engineers, 2005
Certified Floodplain Managers Course, FEMA/TFMA, 2006
Certified Professional in Erosion & Sedimentation Control (CPESC), Training Course, 2009

Current Assessment:

President of Waeltz & Prete, Inc. and Registered Professional Engineer in Round Rock Texas.

Experience:

Design and construction plan preparation for civil works projects such as site developments, streets/roads, drainage facilities, water and wastewater distribution/collection systems, and water detention/quality controls. In addition, duties include hydrology, hydraulic, and water modeling with HEC-HMS, HEC-RAS & WaterCad, respectively. Preparation of feasibility reports, technical reports, proposals, man hour estimates, project budgets, schedules, and construction cost estimates.

Affiliations:

Board Member Planning & Zoning Commission, Elgin, TX



WAELTZ & PRETE, INC.
Civil Engineers
211 N. A.W. Grimes Blvd.
Round Rock, TX 78665
512.505.8953

RELEVANT PROJECT LIST

Below is an abbreviated list of projects that Waeltz & Prete has completed or that are under design/review/construction within the City of Round Rock.

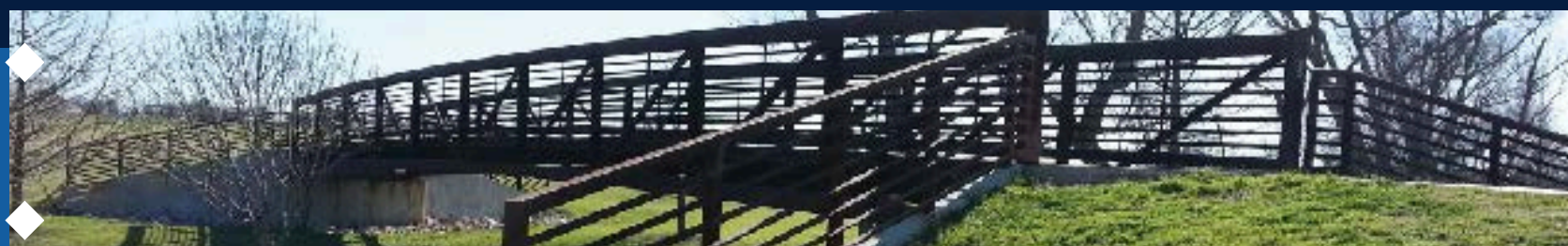
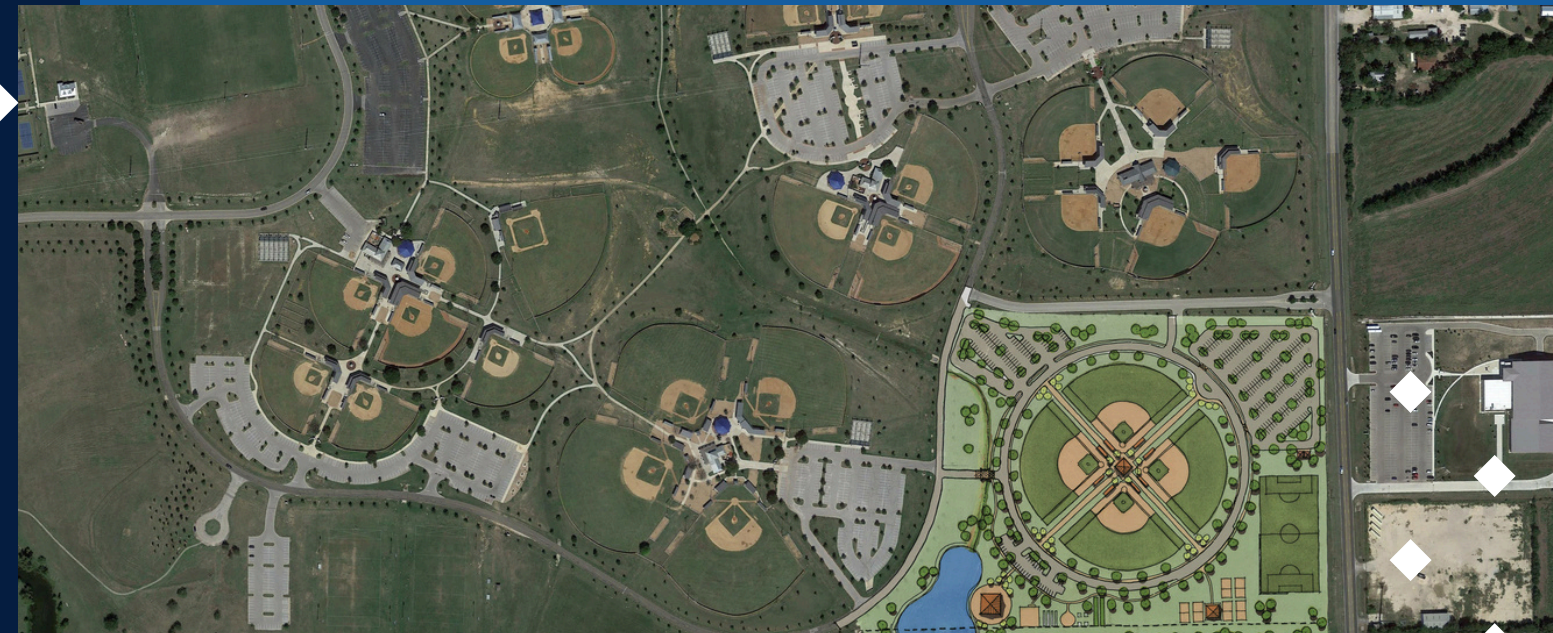
Completed for Private Developer:

Site Plan – Texas A&M Health Center
Arbor Place Construction Phase
Stony Point Church Drainage Study
Site Plan – Fellowship at Forest Creek
Site Plan – Stonehaven Apartments
Site Plan – Rocking J Business Park
Site Plan – Oakwood Surgery Center
Site Plan – YMCA Boles Family Park Pavilion
Site Plan – St. John Vianney Phase 1, 1A, 2
Site Plan – Harmony Hill Preschool
Site Plan – NIR Investments
Site Plan – Keller Williams Realty
Site Plan – Five Faithful Talents
Site Plan – Hilton Hotel, La Frontera
Site Plan – AYS parking lot Addition

Site Plan - South University
Site Plan - Odyssey Technical Solutions
Site Plan - Frontera Ridge, La Frontera
Frontera Drive, La Frontera
Site Plan - Meridian School
Site Plan - Town Place Suites
Site Plan - Emerald Lawns
Site Plan - High Rock Ph 1 & 2
Site Plan - Greenlawn Plaza
Sheraton Hotel WW Analysis

Completed for City of Round Rock:

Brushy Creek Gaps Trial
Kenny Fort 16" Wtr Ln
Red Bud Road Improvements PH 5
Chandler Creek WW Interceptor
Site Plan - Buck Egger Park
Site Plan - Play for All Abilities
A.W. Grimes Median Improvements
Reuse Transmission Main
Lake Creek Park Water & Wastewater
Site Plan - Rabb House Driveway
Site Plan - Veterans Park
Site Plan - Mesa Park
Red Bud Right Turn Lane
Round Rock West Park
Site Plan - Clay Madsen





WAELTZ & PRETE, INC.
Civil Engineers
211 N. A.W. Grimes Blvd.
Round Rock, TX 78665
512.505.8953

REFERENCES

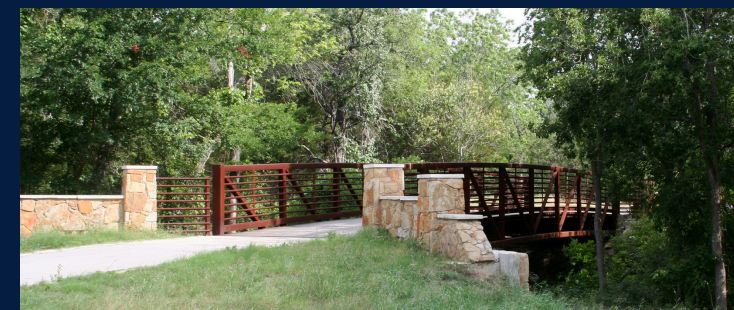
LATON CARR, P.E., C.F.M.
City Engineer
City of Round Rock
2008 Enterprise Dr.
Round Rock, TX 78664
512.218.3238
lcarr@roundrocktexas.gov

KATIE BAKER, PLA, ASLA
Manager-Parks Development
City of Round Rock
301 W. Bagdad Ave #250
Round Rock, TX 78664
512.341.3355
kbaker@roundrocktexas.gov

BEN WHITE
Development Manager
Central Southwest Texas Development, LLC
1703 west 5th Street, Suite 850
Austin, TX 78703 512.412.3992
bwhite@cswwdevelopment.com

DAVID LEHMANN
Georgetown Autohaus
1 Indian Meadows Dr.
Round Rock, TX 78665
916.220.2876
mini92truckin@gmail.com

RYAN HANSANWAT
President
MODE Design Company
103 Wood Ln.
Cedar Park, TX 78613
512.733.1150
ryan@modedc.us



DAVID WOLF
Managing Director
Wolf Creek Sporting Club, LLC
700 County Road 143
Georgetown, TX 78633
512.930.9653
wolfcreeksportingclub@gmail.com





WAELTZ & PRETE, INC.

CIVIL ENGINEERS

211 N. A.W. GRIMES BLVD.

ROUND ROCK, TX. 78665

PH (512) 505-8953

FIRM TX. REG. #F-10308