

ADDENDUM NO. 02
PROJECT NAME: Logan Regional Hospital Inpatient Pharmacy Expansion
PROJECT NUMBER: 25-0135

The original specifications and drawings dated June 26, 2025, for the project above are amended in Addendum No. 02, dated September 09, 2025.

Receipt of this addendum shall be acknowledged by inserting its number and date in the space provided on the bid form.

This addendum consists of the following:

ARCHITECTURAL ADDENDUM ITEMS:

- Finish schedule clarification for both base and alternative bid in the material management area
 - A701- Updated finish floor plan to show finishes for existing areas in Material Management, new finishes in Material Management, and new finishes in corridor. Added keynote table to sheet.
- RF-01 flooring type clarifications
 - A710- Updated the finish schedule with new resilient flooring product type.
- Acoustic flooring base clarifications
 - Acoustic base is not needed for flooring installation. Please refer to the resilient flooring specifications for details.
- Specifications clarifications - missing flooring section
 - 09 6516 Resilient Flooring Specifications - please see the specifications for Resilient flooring requirements.

MECHANICAL ADDENDUM ITEMS:

- Vendor prior approval requirements for listed mechanical items.



ADDENDUM 2

DATE: September 9, 2025

PROJECT NO: 250220

PROJECT: LRH Inpatient Pharmacy Remodel

The following revision, additions, deletions, and/or items of clarification shall hereby be included as an integral part of the Contract Documents for the above-listed project and shall be fully binding. All other requirements of the original plans and specification shall remain in effect in their respective order.

PRIOR APPROVALS

The following manufacturers, trade names and products are allowed to bid on a name brand only basis with the provision that they completely satisfy all and every requirement of the drawings, specifications and all addenda shall conform to the design, quality and standards specified, established and required for the complete and satisfactory installation and performance of the building and all its respective parts.

| <u>Item</u> | <u>Manufacturer</u> | <u>Comments</u> |
|---------------------------|--------------------------------|-----------------|
| Test & Balance Contractor | Building Control Systems (BCS) | Approved |

SECTION 096516
RESILIENT HOMOGENEOUS VINYL SHEET FLOORING

PART 1 - GENERAL

1.1 RELATED DOCUMENTS

- A. Drawings and general provisions of the Contract, including General and Supplementary Conditions and Division 01 Specification Sections, apply to this Section.

1.2 SUMMARY

- A. Section Includes:
 - 1. Resilient Homogeneous Vinyl Sheet Flooring.

1.3 SUBMITTALS

- A. Product Data: For each type of product indicated.
- B. LEED Submittals:
 - 1. Product Data for Credit EQ 4.1: For adhesives, include printed statement of VOC content and chemical components.
- C. Samples for Initial Selection: For each type of product indicated.
- D. Samples for Verification: For each type of product indicated, in manufacturer's standard-size samples of each resilient product color, texture, and pattern required.
- E. Product Schedule: For resilient products. Use same designations indicated on Drawings.

1.4 QUALITY ASSURANCE

- A. Installation Qualification: Contractors for floor covering installation should be experienced in managing commercial flooring projects and provide professional installers, qualified to install the various flooring materials specified. An installer is "qualified" if trained, or a certified by Tarkett or a certified INSTALL (International Standards & Training Alliance) resilient floor covering installer.
- B. Mockups: Provide resilient products with mockups specified in other Sections.

1.5 DELIVERY, STORAGE, AND HANDLING

- A. Store resilient products and installation materials in dry spaces protected from the weather, with ambient temperatures maintained within range recommended by Tarkett, but not less than 55 deg F (13 deg C) or more than 85 deg F (29 deg C).

1.6 PROJECT CONDITIONS

- A. Install resilient products after other finishing operations, including painting, have been completed.
- B. Maintain ambient temperatures within range recommended by Tarkett, but not less than 65 deg F (18 deg C) or more than 85 deg F (29 deg C) in spaces to receive resilient products during the following time periods:
 - 1. 48 hours before installation.
 - 2. During installation.
 - 3. 48 hours after installation.
- C. Maintain the ambient relative humidity between 40% and 60% during installation.
- D. Until Substantial Completion, maintain ambient temperatures within range recommended by Tarkett, but not less than 55 deg F (13 deg C) or more than 85 deg F (29 deg C).

PART 2 - PRODUCTS

2.1 RESILIENT SHEET FLOORING

Manufacturer:

Tarkett North America Phone: (800) 899-8916
30000 Aurora Rd. (440) 543-8916
Solon, Ohio 44139
Web: www.tarkettna.com

2.2 IQ HOMOGENOUS VINYL SHEET FLOORING WITH PUR

- A. Basis-of-Design Product: Subject to compliance with requirements, provide Tarkett **iQ Optima**.
- B. Sheet Standard: ASTM F1913, Standard Specification for Vinyl Sheet Floor Covering Without Backing.
- C. Thickness/Wearlayer: 0.080 inch (2.0 mm).
- D. For size specify: [6 ft. 6 inches (2 m)]

- E. Colors and Patterns: **[As selected by Architect; RE: Finish Schedule]**
- F. Test data:
 - 1. Flexibility (ASTM F137): Passes
 - 2. Chemical Resistance (ASTM F925): Passes
 - 3. Static Load Limit (ASTM F 970): Passes 250 psi
 - 4. Resistance to Heat (ASTM F1514): $\Delta E \leq 8$
 - 5. Resistance to Light (ASTM F1515): $\Delta E \leq 8$
 - 6. Residual Indentation (ASTM F1914): Passes
 - 7. Static Coefficient of Friction (ASTM D 2047): ≥ 0.5 SCOF
 - 8. Flamability (ASTM E648, Critical Radiant Flux): Class 1 (≥ 0.45 W/cm²)
 - 9. Limited Commercial Warranty: 20 years

2.3 INSTALLATION MATERIALS

- A. Trowelable Leveling and Patching Compounds: Latex-modified, Portland cement based or blended hydraulic-cement-based formulation.
- B. Adhesives: As recommended by Tarkett to meet site conditions
 - 1. Tarkett 906 Conductive Adhesive (For use with iQ Granit SD and Toro SC)
 - 2. Tarkett 925 Resilient Flooring Adhesive
 - 3. Tarkett 975 Two-Part Urethane Adhesive
 - 4. Tarkett 901 SpraySmart Adhesive
 - 5. Tarkett RollSmart Adhesive
 - 6. Cold Weld Liquid

PART 3 - EXECUTION

3.1 EXAMINATION

- A. Examine substrates, with Installer present, for compliance with requirements for maximum moisture content and other conditions affecting performance of the work.
- B. Verify that finishes of substrates comply with tolerances and other requirements specified in other Sections and that substrates are free of cracks, ridges, depressions, scale, and foreign deposits that might interfere with adhesion of resilient products.
- C. Proceed with installation only after unsatisfactory conditions have been corrected.

3.2 PREPARATION

- A. Prepare substrates according to Tarkett written instructions to ensure proper adhesion of Resilient Flooring.
 - 1. Prepare concrete substrates in accordance with ASTM F 710.
 - a. Concrete floors must be free of dust, solvent, paint, wax, oil, grease, residual adhesive, adhesive removers, film-forming curing compounds, silicate penetrating curing compounds, sealing, hardening or parting compounds, alkaline salts, excessive carbonation or laitence, mold, mildew, and other foreign materials that may affect dissipation rate of moisture from the concrete, discoloration or adhesive bonding.
 - b. Mechanically remove contamination on the substrate that may cause damage to the resilient flooring material. Permanent and non-permanent markers, pens, crayons, paint, etc., must not be used to write on the back of the flooring material or used to mark the substrate as they could bleed through and stain the flooring material.
 - c. Perform moisture testing as recommended by manufacturer. Proceed with installation only after substrates have been tested and meet the minimum requirements from the manufacturer in accordance with ASTM F1869 Standard Test Method for Measuring Moisture Vapor Emission Rate of Concrete Subfloor Using Anhydrous Calcium Chloride or ASTM F2170 Standard Test Method for Determining Relative Humidity in Concrete Floor Slabs Using in situ Probes.
 - d. A pH test for alkalinity must be conducted on the concrete floor prior to installation with results between 7 and 9. If the test results are not within the acceptable range, then installation must not proceed until the problem has been corrected.
 - 2. Wood subfloors must have a minimum 18" (45.7 cm) of cross-ventilated space beneath the bottom of the joist.
 - a. The floor must be rigid, free of movement.

- b. Single wood and tongue and groove subfloors should be covered with ¼" (6.4 mm) or ½" (12.7 mm) APA approved underlayment plywood.
 - 1) Use ¼" (6.4 mm) thick underlayment panels for boards with a face width of 3" (76 mm) or less.
 - 2) Use ½" (12.7 mm) thick underlayment panels for boards with a face width wider than 3" (76 mm).
 - c. Do not install over OSB (Oriented Strand Board), particle board, chipboard, lauan or composite type underlayments.
 - B. Fill cracks, holes, depressions and irregularities in the substrate with good quality Portland cement based underlayment leveling and patching compound and remove bumps and ridges to produce a uniform and smooth substrate.
 - C. Floor covering shall not be installed over expansion joints.
 - D. Do not install resilient products until they are same temperature as the space where they are to be installed.
 - 1. Move resilient products and installation materials into spaces where they will be installed at least 48 hours in advance of installation.
 - E. Sweep and vacuum clean substrates to be covered by resilient products immediately before installation.

3.3 RESILIENT SHEET FLOORING INSTALLATION

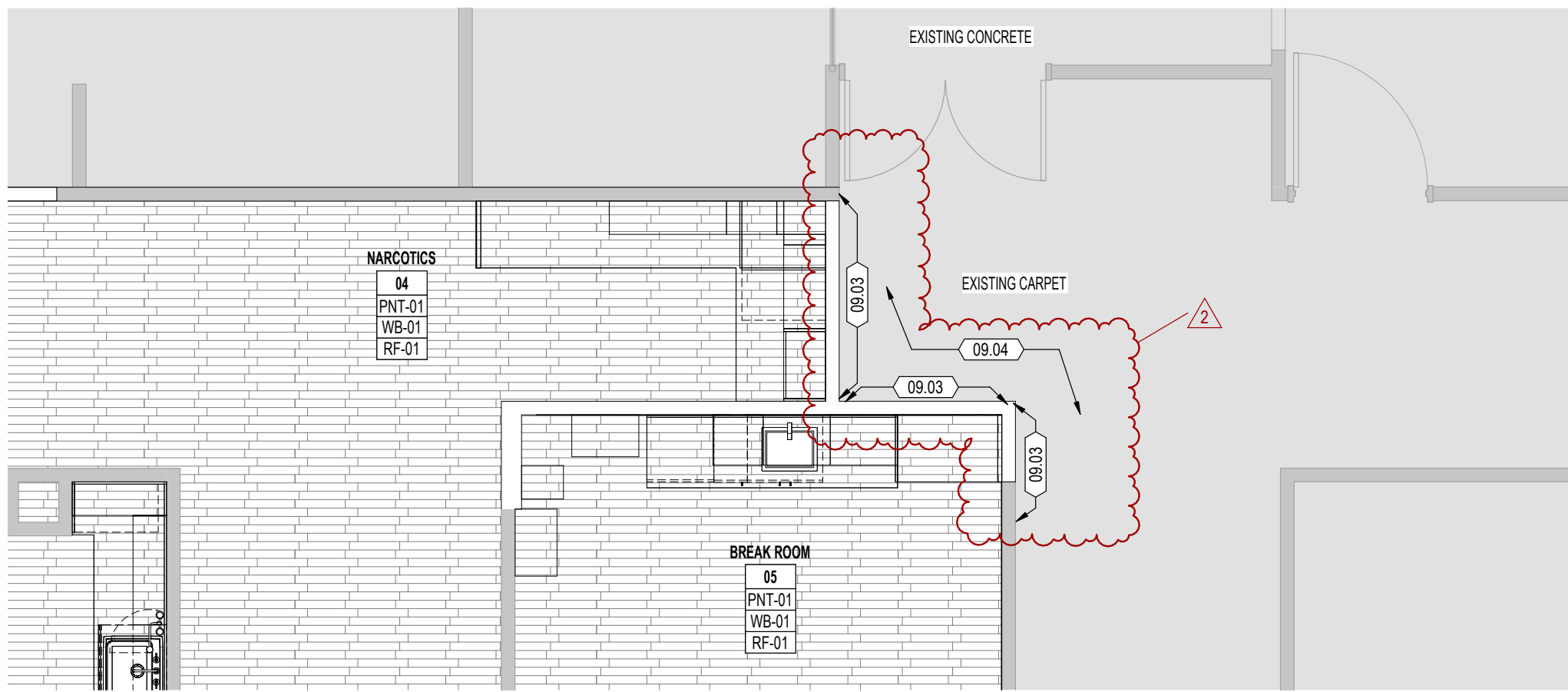
- A. Comply with manufacturer's written instructions for installing resilient sheet flooring.
- B. Resilient Sheet Flooring:
 - 1. Install with Tarkett adhesive specified for the site conditions and follow adhesive label for proper use.
 - 2. Install rolls in sequential order following roll numbers on the labels.
 - 3. Reverse non-pattern sheets as referenced in the Tarket Installation Instructions.
 - 4. Roll the flooring in both directions using a 100 pound three-section roller.
 - 5. Vinyl sheet flooring must be welded.

Note: It is recommended to heat weld seams to provide a more sterile and water tight seam.
 - 6. Tarkett Resilient Sheet Flooring may be flash coved.
 - a. Use Johnsonite CFS-00-A Cove Filler Strip.
 - b. Net fit flooring material into the appropriate Johnsonite cove cap.

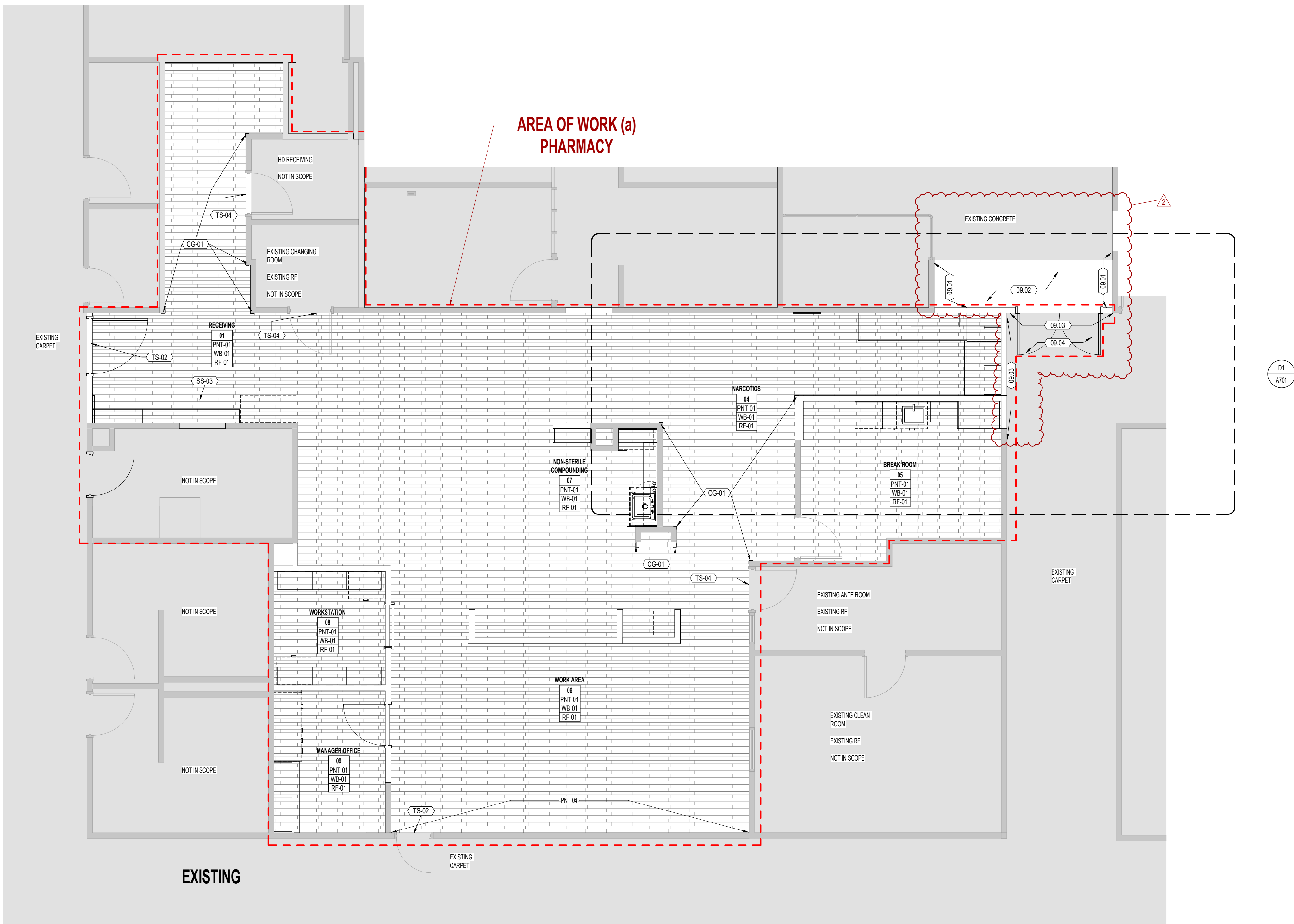
3.4 CLEANING AND PROTECTION

- A. Comply with manufacturer's written instructions for cleaning and protection of resilient products.
- B. Perform the following operations immediately after completing resilient product installation:
 - 1. Remove adhesive and other blemishes from exposed surfaces.
 - 2. Sweep and vacuum surfaces thoroughly.
 - 3. Damp-mop surfaces to remove marks and soil.
- C. Protect resilient products from mars, marks, indentations, and other damage from construction operations and placement of equipment and fixtures during remainder of construction period.
 - 1. No traffic for 24 hours after installation.
 - 2. No heavy traffic, rolling loads, or furniture placement for 72 hours after installation.
- D. Wait 72 hours after installation before performing initial cleaning.
- E. A regular maintenance program must be started after the initial cleaning.

END OF SECTION 09 6516



D1 L01- PHARMACY FINISH PLAN - BID ALT. 1
1/4" = 1'-0"



A1 L01- PHARMACY FINISH PLAN
1/4" = 1'-0"

GENERAL NOTES - FINISH

1. SEE FLOOR PLANS FOR INTERIOR ELEVATIONS
2. ALL MATERIALS TO BE INSTALLED PER SPECIFIC MANUFACTURER'S INSTALLATION RECOMMENDATIONS
3. FLOORING MATERIAL TRANSITIONS TO OCCUR AT CENTERLINE OF DOOR THRESHOLDS, UNLESS NOTED OTHERWISE
4. PREPARE FLOORS/WALLS TO RECEIVE FINISH MATERIAL. REFER TO MANUFACTURER'S RECOMMENDATIONS FOR SURFACE PREPARATION. NOTIFY ARCHITECT IF CONDITIONS ARE INADEQUATE FOR REQUIRED INSTALLATION
5. SEE DIMENSION PLAN SHEET SERIES A120 FOR WALL TYPE LOCATIONS. SEE SHEET SERIES A800 FOR WALL TYPE AND ASSEMBLY DESCRIPTIONS
6. CONTRACTOR TO PROVIDE SOLID BLOOMING AT ALL CASEWORK, FIXED FURNISHINGS, AND EQUIPMENT. COORDINATE WITH ELEVATIONS, SECTIONS, FURNITURE, FIXTURE SHEETS, AND SPECIFICATIONS
7. SEE SHEET SERIES A800 FOR TYPICAL DETAILS
8. TILE INSTALLER TO FOLLOW T&A ANSI GUIDELINES
9. ALL FLOORING MATERIALS ARE TO RUN WALL TO WALL AND BENEATH CASEWORK
10. VERIFY LOCATION OF POINT OR ORIGIN OF TILE AND CONTROL JOINTS ON SHOP DRAWINGS AND WITH ARCHITECT ON-SITE PRIOR TO INSTALLATION
11. ALL GROUT TO BE SEALED
12. GENERAL CONTRACTOR TO COORDINATE POWER/DATE PLACEMENT WITH FURNITURE PROVIDER
13. LEVEL & FINISH REQUIRED FOR ALL WALL GRAPHIC AND WALLCOVERING LOCATIONS. SEE FINISH PLANS AND ELEVATIONS FOR LOCATIONS
14. ALL METAL STUD WALLS TO DECK ABOVE, UNLESS NOTED OTHERWISE. SEE SHEET SERIES A800 FOR WALL TYPES
15. PROVIDE DEFLECTION TRACKS AT ALL STUD WALLS. SEE DETAILS ON SHEET SERIES A800
16. ALL EXPOSED METAL TO BE INSTALLED PER SPECIFIC MANUFACTURER'S INSTALLATION RECOMMENDATIONS
17. CREATE A CLEAN, STRAIGHT TRANSITION LINE FROM POLISHED SEALED CONCRETE FLOORING TO SEALED CONCRETE FLOORING UNDER DOORS. USE APPROPRIATE MEANS TO ACHIEVE A CLEAN TRANSITION

KEYED NOTES

| | |
|-------|--|
| 09-01 | PANT NEWLY ADDED WALLS IN MATERIAL MANAGEMENT ROOM TO MATCH EXISTING PANT ON WALLS IN MATERIAL MANAGEMENT. PATCH AND REPAIR ADJACENT WALLS IF NECESSARY. CONTRACTOR TO COORDINATE WITH OWNER |
| 09-02 | NEWLY ADDED FLOOR AREA IN MATERIAL MANAGEMENT ROOM TO MATCH EXISTING CONCRETE FLOOR FINISH. PATCH AND REPAIR ADJACENT FLOOR SURFACES AS NECESSARY. CONTRACTOR SHALL COORDINATE WITH OWNER |
| 09-03 | PANT NEWLY ADDED WALLS IN CORRIDOR TO MATCH EXISTING PANT ON WALLS IN CORRIDOR. PATCH AND REPAIR ADJACENT WALLS IF NECESSARY. CONTRACTOR TO COORDINATE WITH OWNER |
| 09-04 | PATCH AND REPAIR EXISTING CARPET IN CORRIDOR AS NECESSARY. INSTALL WALL BASE TO NEWLY ADDED WALLS IN CORRIDOR TO MATCH EXISTING WALL BASE HEIGHT. CONTRACTOR SHALL COORDINATE WITH OWNER REGARDING AVAILABILITY OF ATTACHED MATERIALS PRIOR TO PROCUREMENT |
| CG-01 | CORNER GUARD. RE: FINISH SCHEDULE |
| SS-03 | SOLID SURFACE. RE: FINISH SCHEDULE |
| TS-02 | METAL FLOOR TRANSITION. RE: FINISH SCHEDULE |
| TS-04 | RUBBER FLOOR TRANSITION. RE: FINISH SCHEDULE |

FLOOR FINISH LEGEND

| RF-01 | SHEET VINYL RESILIENT FLOORING |
|-------|--------------------------------|
| - | MATCH EXISTING |
| | |
| | |
| | |
| | |
| | |
| | |
| | |
| | |
| | |

* SEE ENLARGED FINISH PLANS + INTERIOR ELEVATIONS + FINISH SCHEDULE SHEET FOR MORE INFORMATION *

FINISH KEY

TYP. ROOM FINISH TAG

| Room Name | Room Number |
|-----------|----------------------------------|
| WV | WALL FINISH |
| W | BASE FINISH |
| B | FLOOR FINISH |
| F | |
| * | MULTIPLE FINISHES: SEE ELEVATION |

ACCENT TAG

| Extent of Finish Scope | Finish Code |
|------------------------|--|
| XX-XX | REFER TO FINISH SCHEDULE FOR BASIS OF DESIGN |

NOTE: INDICATES MAIN FIELD FINISH. ASSUME THIS FINISH IN ENTIRE AREA UNLESS AN ACCENT IS CALLED OUT IN PLANS OR ELEVATION



360 west aspen avenue
salt lake city, utah 84101
801 532 4422

UNLESS A PROFESSIONAL SEAL WITH SIGNATURE AND DATE IS AFFIXED, THIS DOCUMENT IS PRELIMINARY AND IS NOT INTENDED FOR CONSTRUCTION, RECORDING PURPOSES, OR IMPLEMENTATION

project:
LRH Inpatient Pharmacy Expansion

Logan Regional Hospital
1400 N 500 E
Logan, UT 84341

project #: 25.0135
date: 06/26/2025
revisions:
1 Add 1 - DHHS Plan Review & 08/26/2025
ELECT. GC
2 Add 2 - FINISHES 09/09/2025

title:
LEVEL 01 - PHARMACY FINISH PLAN

sheet:
A701
100% CONSTRUCTION DOCUMENTS

Autodesk Docs | LRH Inpatient Pharmacy Expansion | 05/2025 | 48 of 141

C

D

E

| FINISH SCHEDULE | | | | | | | |
|---|---|------------------|--|-------------------------|---|---|---|
| CODE | PRODUCT TYPE | MANUFACTURER | STYLE | COLOR | FINISH NOTES/REMARKS | SPECIFICATION | |
| DIVISION 06 - WOODS, PLASTICS & COMPOSITES | | | | | | | |
| PL-01 | PLASTIC LAMINATE | LAMINART | | MYSTIC WOOD 3066-VT | BASE CABINET, VELVA TEX FINISH | VERTICAL GRAIN WITH EXPOSED MATCHING EDGE BANDING (SHEET SIZE 4'x8') | |
| PL-03 | PLASTIC LAMINATE | LAMINART | | MYSTIC WOOD 3066-VT | UPPER CABINETS, VELVA TEX FINISH | VERTICAL GRAIN WITH EXPOSED MATCHING EDGE BANDING (SHEET SIZE 4'x8') | |
| PL-04 | PLASTIC LAMINATE | STEELCASE | | VIRGINIA WALNUT | | STEELCASE MIDWEST FURNITURE PACKAGE | |
| DIVISION 09 - BASE & TRANSITIONS | | | | | | | |
| TS-02 | METAL FLOOR TRANSITION STRIP | SCHLUTER | SCHEME | SATIN ANODIZED ALUMINUM | TO BE SELECTED FROM MANUFACTURERS FULL LINE OF COLORS | HEIGHT TO MATCH MATERIAL THICKNESS. INSTALL PER MANUFACTURERS INSTRUCTIONS. | |
| TS-04 | RUBBER FLOOR TRANSITION | ROPPE | #38 FLOOR EDGE TRIM | | | 100% VULCANIZED RUBBER TRANSITION STRIP. | |
| WB-01 | FLOORING WALL BASE | TARKETT | IQ OPTIMA ACOUSTIC | DARK SAND 807 | CONTRACTOR TO SUPPLY COORDINATING HEAT WELD & TRIM COLORS PRIOR TO INSTALLATION | | |
| DIVISION 09 - CEILINGS | | | | | | | |
| ACF-01 | ACOUSTICAL CEILING PANEL | ARMSTRONG | ULTIMATE HEALTH ZONE | WHITE 1938 | FINE TEXTURE | 24" X 24" | |
| DIVISION 09 - FLOORS | | | | | | | |
| IF-01 | SHEET VINYL RESILIENT FLOORING | TARKETT | IQ OPTIMA | DARK SAND 807 | HEAT WELD ALL SEAMS WITH MANUFACTURER RECOMMENDED | HEAT WELDED WITH COVERED BASE | |
| DIVISION 09 - PAINT & WALLCOVERING | | | | | | | |
| PNT-01 | FIELD WALL PAINT | SHERWIN WILLIAMS | | PURE WHITE SW 7005 | SATIN FINISH | MUST BE AN EPOXY, ACRYLIC OR OTHER NON-POROUS SEALANT TYPE. MUST BE ABLE TO WITHSTAND FREQUENT DISINFECTION, LOW VOC AND LOW-COLOR. | |
| PNT-02 | FIELD CEILING PAINT | SHERWIN WILLIAMS | | PURE WHITE SW 7005 | FLAT FINISH | MUST BE AN EPOXY, ACRYLIC OR OTHER NON-POROUS SEALANT TYPE. MUST BE ABLE TO WITHSTAND FREQUENT DISINFECTION, LOW VOC AND LOW-COLOR. | |
| PNT-03 | TRIM PAINT (HOLLOW METAL FRAMES) | SHERWIN WILLIAMS | | PURE WHITE SW 7005 | SEMI-GLOSS FINISH | MUST BE AN EPOXY, ACRYLIC OR OTHER NON-POROUS SEALANT TYPE. MUST BE ABLE TO WITHSTAND FREQUENT DISINFECTION, LOW VOC AND LOW-COLOR. | |
| PNT-03a | TRIM PAINT (HOLLOW METAL FRAMES) | SHERWIN WILLIAMS | | WORLDLY GRAY SW 7043 | SEMI-GLOSS FINISH | MUST BE AN EPOXY, ACRYLIC OR OTHER NON-POROUS SEALANT TYPE. MUST BE ABLE TO WITHSTAND FREQUENT DISINFECTION, LOW VOC AND LOW-COLOR. | |
| PNT-04 | ACCENT PAINT | SHERWIN WILLIAMS | | WORLDLY GRAY SW 7043 | SATIN FINISH | MUST BE AN EPOXY, ACRYLIC OR OTHER NON-POROUS SEALANT TYPE. MUST BE ABLE TO WITHSTAND FREQUENT DISINFECTION, LOW VOC AND LOW-COLOR. | |
| DIVISION 10 - SPECIALTIES | | | | | | | |
| CG-01 | CORNER GUARD | INPRO | TAPE ON CORNER GUARD 3348 | FEATHER 0238 | | ANGLE: 90 DEGREES, WING SIZE: 3", HEIGHT: 4" | |
| LK-01 | LOCKERS | SPACESAVER | DAY USE LOCKERS | DESIGNER GREY DG (2) | STANDARD SMOOTH FINISH | LAMINATE DOOR, LOCK SYSTEM: CUMAR COMBI PRO WITH MASTER KEY | |
| DIVISION 12 - FURNISHINGS | | | | | | | |
| SS-01 | SOLID SURFACE COUNTERTOP | LX HAUSIYS | LG H-AMACS | LUNAR SAND G108 | | TYPICAL SPLASH 4" H. RE. INTERIOR ELEVATIONS PER AREA. PER INTERMOUNTAIN HEALTH 2019 DESIGN GUIDELINES, SECTION 5.5.2 INPATIENT PHARMACY SUITE, NO EXPOSED WOOD IS ALLOWED INCLUDING UNCOATED MDF. THIS WOULD INCLUDE THE UNDERSIDE OF COUNTERS OR CABINETS. | |
| SS-02 | SOLID SURFACE COUNTERTOP BACKSPLASH | LX HAUSIYS | LG H-AMACS | LUNAR SAND G108 | | SEE INTERIOR ELEVATIONS PER AREA FOR DEVIATION OF HEIGHT. | |
| SS-03 | SOLID SURFACE COUNTERTOP | LX HAUSIYS | LG H-AMACS | ARMADILLO GT009 | | TYPICAL SPLASH 4" H. RE. INTERIOR ELEVATIONS PER AREA. | |
| ACCESSORY SCHEDULE | | | | | | | |
| SCHEDULED MATERIALS AND FINISHES SHALL BE USED FOR BASIS OF DESIGN U.N.O. | | | | | | | |
| CODE | PRODUCT TYPE | MANUFACTURER | MAKE/MODEL | Type | Count | FINISH | COMMENTS |
| 10-03 | COAT HOOK | AMEROCK | 14700308B | COAT HOOK | 5 | MATTE BLACK | CONTRACTOR PROVIDED / CONTRACTOR INSTALLED. INSTALL PER MANUFACTURERS RECOMMENDATIONS. SEE G003 FOR MOUNTING HEIGHTS. |
| 10-05 | ADJUSTABLE DRYING ROD | DESIGN HOUSE | 200045 | ADJUSTABLE DRYING ROD | 2 | | CONTRACTOR PROVIDED / CONTRACTOR INSTALLED. INSTALL PER MANUFACTURERS RECOMMENDATIONS. |
| HARDWARE SCHEDULE | | | | | | | |
| PRODUCT TYPE | MODEL | FINISH | SPECIFICATIONS | | | | |
| CABINET PULL | AMEROCK BPSP279610 | SATIN NICKEL | BLACKROCK COLLECTION (18MM) OVERALL 7.25" L x 1.25" D x 1.0-3.0" GRASP | | | | |
| GROWMET | NOCKETT TEG-348 | BLACK BRN | TG FLIP-TOP SERIES 2" HOLE GROWMET CAP AND LINER | | | | |
| CASEWORK CONCEALED BRACKET | ADM HARDWARE 1.0" CONCEALED BRACKET C15 | BLACK 909-38 | 1" THICKNESS X 15" D X 12" H | | | | |

GENERAL NOTES - FINISH

- SEE FLOOR PLANS FOR INTERIOR ELEVATIONS
- ALL MATERIALS TO BE INSTALLED PER SPECIFIC MANUFACTURER'S INSTALLATION RECOMMENDATIONS
- FLOORING MATERIAL TRANSITIONS TO OCCUR AT CENTERLINE OF DOOR THRESHOLDS, UNLESS NOTED OTHERWISE
- PREPARE FLOORS/WALLS TO RECEIVE FINISH MATERIAL. REFER TO MANUFACTURER'S RECOMMENDATIONS FOR SURFACE PREPARATION. NOTIFY ARCHITECT IF CONDITIONS ARE INADEQUATE FOR REQUIRED INSTALLATION
- SEE DIMENSION PLAN SHEET SERIES A100 FOR WALL TYPE LOCATIONS. SEE SHEET SERIES A000 FOR WALL TYPE AND ASSEMBLY DESCRIPTIONS
- CONTRACTOR TO PROVIDE SOLID BLOODING AT ALL CASEWORK, FIXED FURNISHINGS, AND EQUIPMENT. COORDINATE WITH ELEVATIONS, SECTIONS, FURNITURE, TEXTURE SHEETS, AND SPECIFICATIONS
- SEE SHEET SERIES A000 FOR TYPICAL DETAILS
- TILE INSTALLER TO FOLLOW TONA & ANSI GUIDELINES
- ALL FLOORING MATERIALS ARE TO RUN WALL TO WALL AND BENEATH CASEWORK
- VERIFY LOCATION OF POINT OR ORIGIN OF TILE AND CONTROL JOINTS ON SHOP DRAWINGS AND WITH ARCHITECT ON-SITE PRIOR TO INSTALLATION
- ALL GROUT TO BE SEALED
- GENERAL CONTRACTOR TO COORDINATE POWER/DATA PLACEMENT WITH FURNITURE PROVIDER
- LEVEL & FINISH REQUIRED FOR ALL WALL GRAPHIC AND WALLCOVERING LOCATIONS. SEE FINISH PLANS AND ELEVATIONS FOR LOCATIONS
- ALL METAL STUD WALLS TO DECK ABOVE, UNLESS NOTED OTHERWISE. SEE SHEET SERIES A000 FOR WALL TYPES
- PROVIDE DEFLECTION TRACKS AT ALL STUD WALLS. SEE DETAILS ON SHEET SERIES A000
- ALL EXPOSED METAL TO BE INSTALLED PER SPECIFIC MANUFACTURER'S INSTALLATION RECOMMENDATIONS
- CREATE A CLEAN, STRAIGHT TRANSITION LINE FROM POLISHED SEALED CONCRETE FLOORING TO SEALED CONCRETE FLOORING UNDER DOORS. USE APPROPRIATE MEANS TO ACHIEVE A CLEAN TRANSITION



360 west aspen avenue
salt lake city, utah 84101
801 532 4422

UNLESS A PROFESSIONAL SEAL WITH SIGNATURE AND DATE IS AFFIXED, THIS DOCUMENT IS PRELIMINARY AND IS NOT INTENDED FOR CONSTRUCTION, RECORDING PURPOSES, OR IMPLEMENTATION

THE DESIGNS SHOWN AND DESCRIBED HEREIN INCLUDING ALL TECHNICAL DRAWINGS, GRAPHIC REPRESENTATIONS & MODELS THEREOF, ARE PROPRIETARY & CAN NOT BE COPIED, DUPLICATED, OR COMMERCIALY EXPLOITED IN WHOLE OR IN PART WITHOUT THE SOLE AND EXPRESS WRITTEN PERMISSION FROM METHOD STUDIO INC.

project:

LRH Inpatient
Pharmacy
Expansion

Logan Regional Hospital
1400 N 500 E
Logan, UT 84341

project #: 25.0135

date: 06/26/2025

revisions:

- | | | |
|---|--------------------------------------|------------|
| 1 | Add 1 - DHHS Plan Review & ELECT. GC | 06/26/2025 |
| 2 | Add 2 - FINISHES | 06/26/2025 |

title:

FINISH
SCHEDULES,
ACCESSORY
SCHEDULES

sheet:

A710

100% CONSTRUCTION
DOCUMENTS