

ADDENDUM NO. 03

To:	Brent Murray	From:	Josh Barsdorf
Company:	Vero Architecture		
Date:	June 1, 2026		
Project:	IH Layton Hospital Sleep Lab Remodel		

The following changes as described below are issued as an addendum to the construction documents prior to bid submittal due date. The contractors are responsible to ensure all addendum additions and/or changes are included in their bid.

Alternate equipment manufacturers stand approved in name only. Inclusion here in no way relieves the supplier from complying with all other engineering, weight, spatial, and quality requirements of equipment indicated in the contract documents. Contractors using products from alternate manufacturers shall refer to Specifications for detailed contractor responsibilities related to the use of alternate brands not used as the Basis of Design

If selected, the prior approved lighting products will be reviewed again during the submittal review process. If it's subsequently determined that the prior approved products are not equivalent to the basis of design light fixtures, the products will be rejected, and the Contractor shall be required to provide a product equivalent to the basis of design light fixture. All lighting products must comply with a maximum of 30-day lead time. [Revise as needed.](#)

Drawings

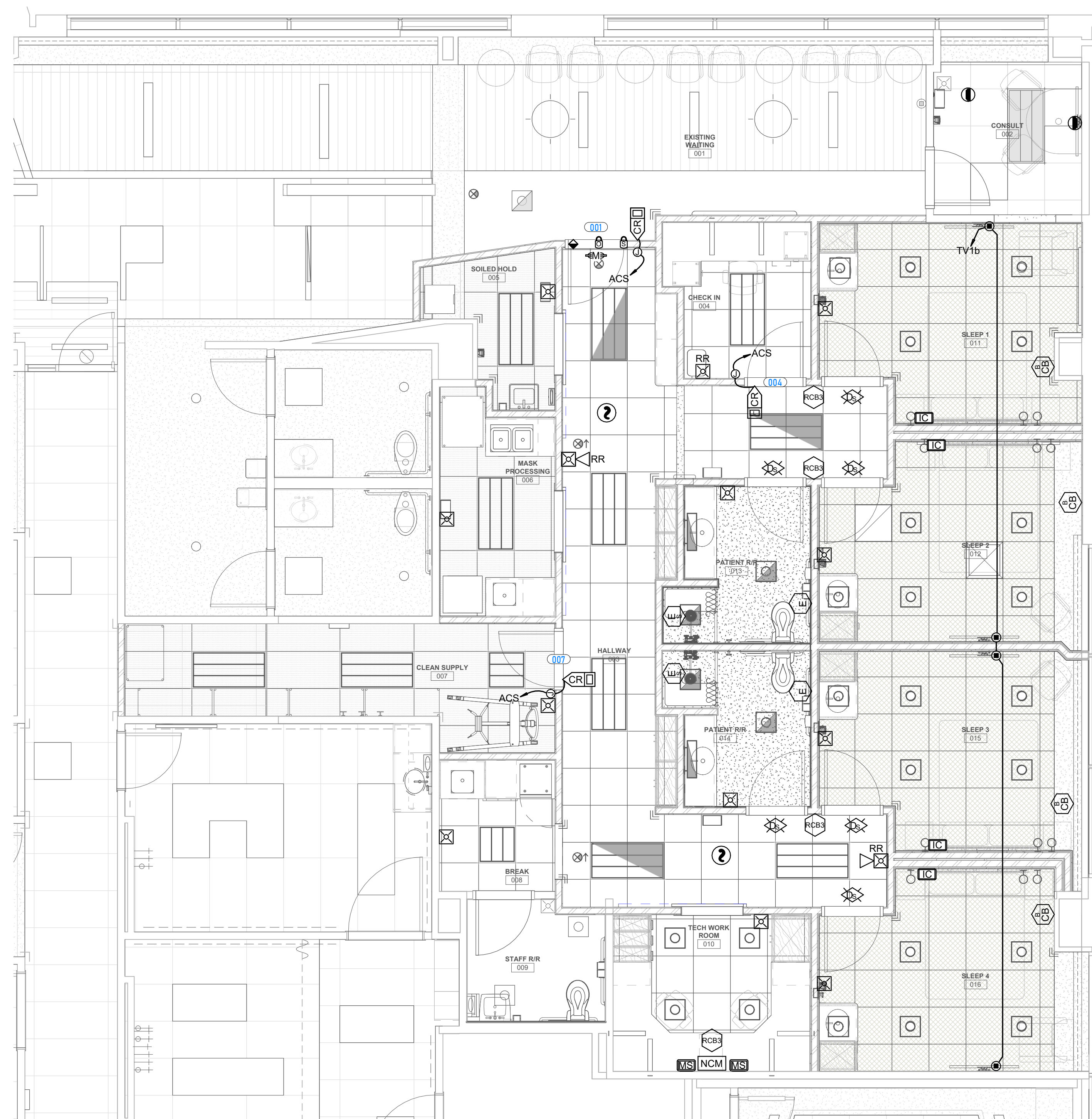
Sheet EY101

1. Revised keynote #11 to clarify fire alarm device raceway requirements.

Attachments

<< EY101 – LEVEL 1 AUXILIARY PLAN >>

End of Addendum



1 LEVEL 1 AUXILIARY PLAN
SCALE: 1/4" = 1'-0"

GENERAL SHEET NOTES

- 1 ALL PATHWAYS FOR LOW VOLTAGE CABLING NOT REQUIRED TO BE IN CONDUITS SHALL BE ROUTED IN J-HOOK PATHWAYS. CONCEAL ALL PATHWAYS ABOVE ACCESSIBLE CEILING SPACES. DO NOT RUN CABLES IN EXPOSED AREAS. WHERE CONCEALMENT IS NOT POSSIBLE IN EXPOSED AREAS, CONTRACTOR SHALL PROVIDE CONDUIT TO ROUTE CABLING WHERE VISIBLE. ALL CONDUIT SHALL BE PAINTED TO MATCH CEILING AND PROVIDED WITH PROTECTIVE BUSHINGS. REFER TO TELECOM RACEWAY PLANS FOR ADDITIONAL INFORMATION.
- 2 SECURITY JUNCTION BOX LOCATIONS ARE FOR REFERENCE PURPOSES ONLY. LOCATION OF JUNCTION BOX TO BE INSTALLED IN AN ACCESSIBLE CEILING SPACE ALLOWING FOR SERVICEABILITY.
- 3 ACCESS CONTROL CABLING TO BE PLENUM RATED.
- 4 SECURITY CONTRACTOR TO COORDINATE WITH DOOR HARDWARE CONTRACTOR FOR ELECTRIC LOCK TYPE, INTERFACE, AND VOLTAGE REQUIREMENTS. CONTRACTOR SHALL REVIEW ALL DOOR HARDWARE ROUGH-IN INFORMATION AGAINST THE DOOR HARDWARE SPECIFICATION AND DOOR HARDWARE SCHEDULE TO VERIFY DOOR ROUGH-IN PRIOR TO CONSTRUCTION.
- 5 SECURITY CABLING SHALL BE RATED FOR THE AREA AND ENVIRONMENT IT IS INSTALLED. REFER TO SPECIFICATIONS FOR CABLING REQUIREMENTS.
- 6 PATHWAYS FOR ACCESS CONTROL MAY SHARE JUNCTION BOXES AND CONDUIT. CONDUIT MUST BE SIZED APPROPRIATELY BASED ON CABLE FILL.
- 7 SEE ARCHITECTURAL ELEVATIONS AND REFLECTED CEILING PLANS FOR DEVICE LOCATIONS. IF NOT SHOWN ON ARCHITECTURAL DRAWINGS LOCATE PER TYPICAL DEVICE MOUNTING DETAILS ON SHEET EE701. ALL CEILING MOUNTED DEVICES SHALL ALIGN WITH OTHER DEVICES ON CEILING.
- 8 COORDINATE MOUNTING LOCATION OF UNDER DESK PANIC BUTTON WITH FURNITURE DRAWINGS, ARCHITECT AND OWNER PRIOR TO ROUGH-IN AND FINAL INSTALLATION.
- 9 CAMERAS SHOWN IN MAGENTA ARE DUPLICATES OF FLOORPLAN CAMERAS AND ARE TO BE USED FOR SITE COVERAGE PURPOSES ONLY.
- 10 CONTRACTOR TO CONDUCT ANY FIRE ALARM TESTING AS REQUIRED BY NFPA 72 (4.7.2).
- 11 FIRE ALARM DEVICE CIRCUITS TO BE RUN IN FACTORY-FINISHED RED CONDUIT (3/4" CND Min).

SHEET KEYNOTES



1480 ORCHARD DRIVE
BOUNTIFUL, UT 84010
SUITE #105
VERO-ARCH.COM

SPECTRUM ENGINEERS
324 S. State St., Suite 400
Salt Lake City, UT 84111
801-678-7077
801-328-5151
fax: 801-328-5155
www.spectrum-engineers.com

CONSULTANTS

INTERMOUNTAIN HEALTH
LAYTON HOSPITAL SLEEP LAB REMODEL
201 WEST LAYTON PARKWAY
LAYTON, UT 84041

BID SET
PROJECT STATUS



ISSUE DATE: 2026.04.30
PROJECT NO: 25028
PROJECT PHASE:
DRAWN BY: JRB
CHECKED BY: JRW

#	DATE	DESCRIPTION
1	05/29/26	Addendum #02
2	06/01/26	Addendum #03

LEVEL 1 AUXILIARY PLAN

SHEET NAME
EY101
SHEET NUMBER