



## ADDENDUM #01

**Job:** IHC World Trade Center – Floor 19  
**Job Number:** 20170641  
**Date:** February 5, 2018

### DISCIPLINES

Mechanical Engineering  
 Electrical Engineering  
 Technology Design  
 Acoustical Engineering  
 Lighting Design  
 Theatre Design  
 Fire Protection Engineering  
 Building Commissioning

## ELECTRICAL – DIV 26

### GENERAL

1. Telecommunications, Security Cameras and Access Control bids shall be submitted directly to IHC.
2. AV bids shall be submitted to the General Contractor.

### DRAWINGS

#### SHEET - EP119

1. Power to ADA doors.

#### SHEET - EL119

1. Exit sign wiring modified.

#### SHEET - ET001

1. System Responsibility Matrix added.

#### SHEET - EY119

1. Updated door types and keynotes.

#### SHEET - EY601

1. Updated VSS and ACS schedules and diagrams.

### PRIOR APPROVALS

Approval of equipment from catalog information indicated brand name and general characteristics are acceptable to the Engineer, but does not relieve the Contractor of the responsibility of providing equipment and accessories as specified unless specific mention of departments from specifications was made in the submittal and acknowledged in writing by the Engineer. Quantities and dimensions are not checked. We are retaining one set of submittal data for our files.

<u>SECTION</u>	<u>ITEM</u>	<u>MANUFACTURER</u>	<u>COMMENT</u>
260500	P1	OCL – Contractor Allowance	\$1,032 each.
<b>Type</b>	<b>MFG</b>	<b>Part</b>	
E1-1	Isolite	EUG AC G 1C	
E1-2	Isolite	EUG AC G 2M	
G-1	Lithonia Lighting	2RTL2 33L EZ1 LP835	
G-12	Lithonia Lighting	2RTL4 48L EZ1 LP835	
RL-16	Selux	L36 1B25 35 LW FF 06 WH UNV DIM	
SS-1	Lithonia Lighting	CLX L48 5000LM SEF RDL	

### SALT LAKE CITY

324 S. State Street  
 Suite 400  
 Salt Lake City, UT 84111  
 phone: 801-328-5151  
 fax: 801-328-5155

### PHOENIX

1501 W. Fountainhead Parkway  
 Suite 340  
 Tempe, AZ 85282  
 phone: 480-621-3444  
 fax: 480-621-3445

www.spectrum-engineers.com  
 800-678-7077



**SPECTRUM**  
ENGINEERS

**DISCIPLINES**

Mechanical Engineering  
Electrical Engineering  
Technology Design  
Acoustical Engineering  
Lighting Design  
Theatre Design  
Fire Protection Engineering  
Building Commissioning

**CENTERS OF**

**ENGINEERING EXCELLENCE**

Healthcare  
Higher Education  
K-12 Education  
Government  
Houses of Worship  
Special Projects

**SALT LAKE CITY**

324 S. State Street  
Suite 400  
Salt Lake City, UT 84111  
phone: 801-328-5151  
fax: 801-328-5155

**PHOENIX**

1501 W. Fountainhead Parkway  
Suite 340  
Tempe, AZ 85282  
phone: 480-621-3444  
fax: 480-621-3445

www.spectrum-engineers.com  
800-678-7077

<b>Type</b>	<b>MFG</b>
E1-1	LSI
E1-2	LSI
G-1	LSI
G-12	LSI
RL-16	FINELITE
SS-1	LSI

<b>Type</b>	<b>MFG</b>
E1-1	Evenlite
E1-2	Evenlite
G-1	Metalux
G-12	Metalux
RL-16	Neo-Ray
SS-1	Metalux

<b>Type</b>	<b>MFG</b>
E1-1	Compass Products
E1-2	Compass Products
G-1	Columbia Lighting
G-12	Columbia Lighting

**Part**  
VE U 6 G 1C WB SA  
VE U 6 G 2M WB SA  
ASC22 LED HO WW UE  
ASC24 LED SS WW UE  
HP-2-SM-6'-B-F-UNV-C4-SC  
SDL 4 LED HO NW UE

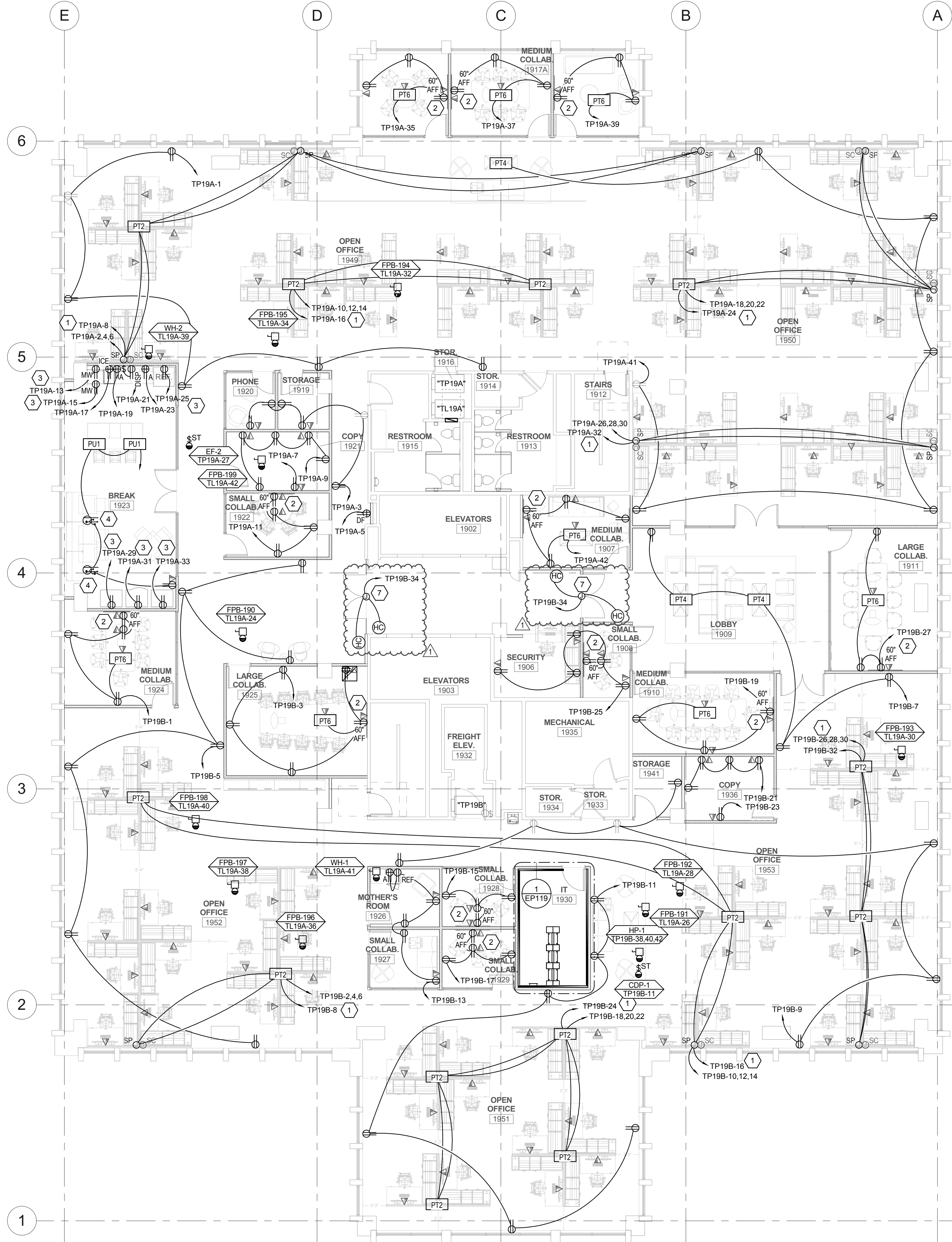
**Part**  
TEXZEMG1C  
TEXZEMG2M  
22AC-LD5-34-UNV-L835-CD1-U  
24AC-LD5-48-UNV-L835-CD1-U  
S121-DR-1-35-\*\*-0096-1-U-DD-1-SCBA  
4SNLED-LD5-50SL-LW-UNV-L835-  
CD1-U

**Part**  
CELS1GN  
CELS2GN  
LEPC22-35MLG-LL-EDU  
LEPC24-35MLG-LL-ED1U

**END OF ADDENDUM**

C:\Users\ids\Other Documents\Revit Local Files\2017\20170641 - Elec WTC Central R17\_ids\_spectrum-engineers.com.rvt

2/5/2018 9:18:34 AM ALL IDEAS, DESIGN, ARRANGEMENTS AND PLANS INDICATED OR REPRESENTED BY THE DRAWING ARE OWNED BY AND THE PROPERTY OF A/C ARCHITECTS P.C. AND SHALL BE KEPT IN CONFIDENCE. NO PART OF THIS DRAWING SHALL BE REPRODUCED OR TRANSMITTED IN ANY FORM OR BY ANY MEANS, ELECTRONIC OR MECHANICAL, WITHOUT WRITTEN CONSENT OF A/C ARCHITECTS P.C. WRITTEN DIMENSIONS ON THESE DRAWINGS SHALL HAVE PRECEDENCE OVER SCALE DIMENSIONS. CONTRACTORS SHALL VERIFY AND BE RESPONSIBLE FOR ALL DIMENSIONS AND CONDITIONS ON THE JOB AND THE OFFICE MUST BE NOTIFIED OF ANY VARIATION FROM THE DIMENSIONS AND CONDITIONS SHOWN BY THESE DRAWINGS. WARNING: REPRODUCTION VIOLATES U.S.C. SEC. 505. UNAUTHORIZED REPRODUCTION IS A CRIMINAL OFFENSE UNDER 18 U.S.C. SEC. 505. UNAUTHORIZED REPRODUCTION MAY CONSTITUTE TRADE SECRET VIOLATION UNDER 18 U.S.C. SEC. 1832 AND OTHER LAWS.

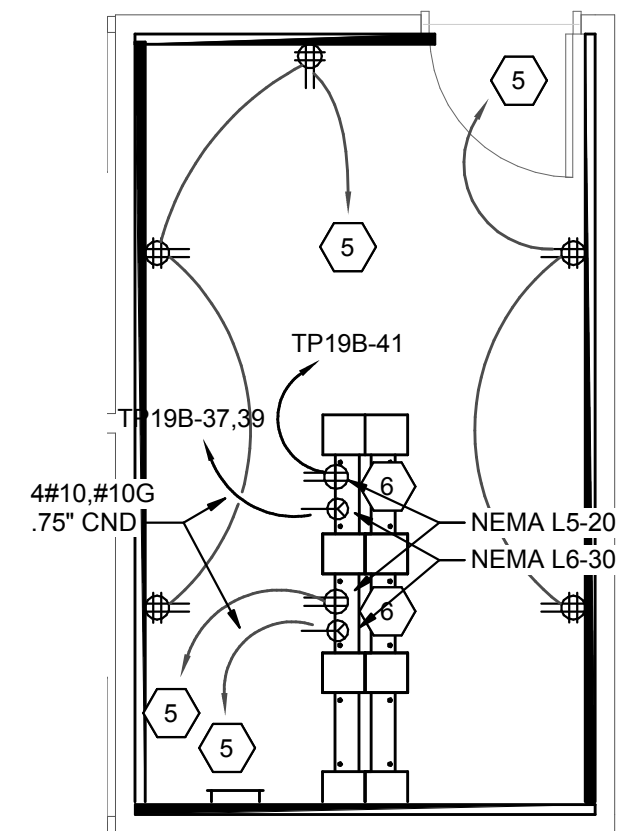


**A1** LEVEL 19 POWER PLAN  
SCALE: 1/8" = 1'-0"

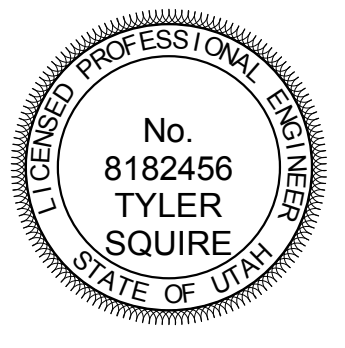
- ### SHEET KEYNOTES
- 1 PROVIDE ELECTRICAL CONNECTIONS TO SYSTEMS FURNITURE. DESIGN IS BASED ON 4 CIRCUIT/8 WIRE SYSTEM (3 CIRCUITS, SHARED OVERSIZED NEUTRAL AND GROUND, PLUS 1 CIRCUIT WITH DEDICATED NEUTRAL AND GROUND). VERIFY WIRING CONFIGURATION AND FEED POINT WITH SYSTEMS FURNITURE INSTALLER PRIOR TO INSTALLATION. COORDINATE WITH FURNITURE INSTALLER SUCH THAT CIRCUITS ARE UNIFORMLY DISTRIBUTED TO NO MORE THAN 3 WORKSTATIONS PER CIRCUIT AND EACH WORKSTATION ONLY HAVING AVAILABLE ITS ASSIGNED CIRCUIT. COPIER OR PRINTERS LOCATED IN A GROUP OF WORKSTATIONS SHALL RECEIVE A DEDICATED CIRCUIT.
  - 2 PROVIDE ELECTRICAL AND DATA RECEPTACLE MOUNTED IN AV BACKBOX FOR AV MONITOR. COORDINATE WITH ARCHITECTURAL DETAILS AND AV INSTALLER.
  - 3 PROVIDE GFI CIRCUIT BREAKER IN PANEL INDICATED.
  - 4 ELECTRICAL RECEPTACLE MOUNTED IN FACE OF BENCH. COORDINATE INSTALLATION WITH BENCH INSTALLERS.
  - 5 CIRCUIT TO UPS PANEL IN IT ROOM ON FLOOR BELOW.
  - 6 MOUNTED ELECTRICAL DEVICES ABOVE THE TELECOMM RACKS. COORDINATE EXACT LOCATION WITH TELECOMM INSTALLERS.
  - 7 PROVIDE ELECTRICAL CONNECTIONS TO ADA DOOR OPERATORS. COORDINATE MOUNTING LOCATION WITH THE ARCHITECT PRIOR TO ROUGH-IN.

- ### GENERAL SHEET NOTES
- 1 LOCATIONS OF ALL POKE-THRU AND SYSTEMS FURNITURE JUNCTION BOXES SHOWN SHALL BE VERIFIED WITH THE FURNITURE VENDOR AND ARCHITECT PRIOR TO INSTALLATION.
  - 2 LOCATIONS OF MECHANICAL EQUIPMENT SHOWN IS APPROXIMATE. COORDINATE THE EXACT LOCATIONS OF ALL MECHANICAL EQUIPMENT WITH THE MECHANICAL INSTALLER PRIOR TO ROUGH-IN.

**1** ENLARGED IT 1930 POWER PLAN  
SCALE: 1/4" = 1'-0"



703 east 1700 south  
salt lake city, utah 84105  
www.ajcarchitects.com



ARCHITECT / CONSULTANT  
**SPECTRUM ENGINEERS**  
324 S. State St., Suite 400  
Salt Lake City, UT 84111  
801-678-7077  
801-328-5151  
fax: 801-328-5155  
www.spectrum-engineers.com

PROJECT DESCRIPTION  
**INTERMOUNTAIN HEALTHCARE WORLD TRADE CENTER FLOOR 19**

60 SOUTH TEMPLE, SALT LAKE CITY, UTAH 84111  
AHJ STAMP

SHEET NAME:  
**LEVEL 19 POWER PLAN**

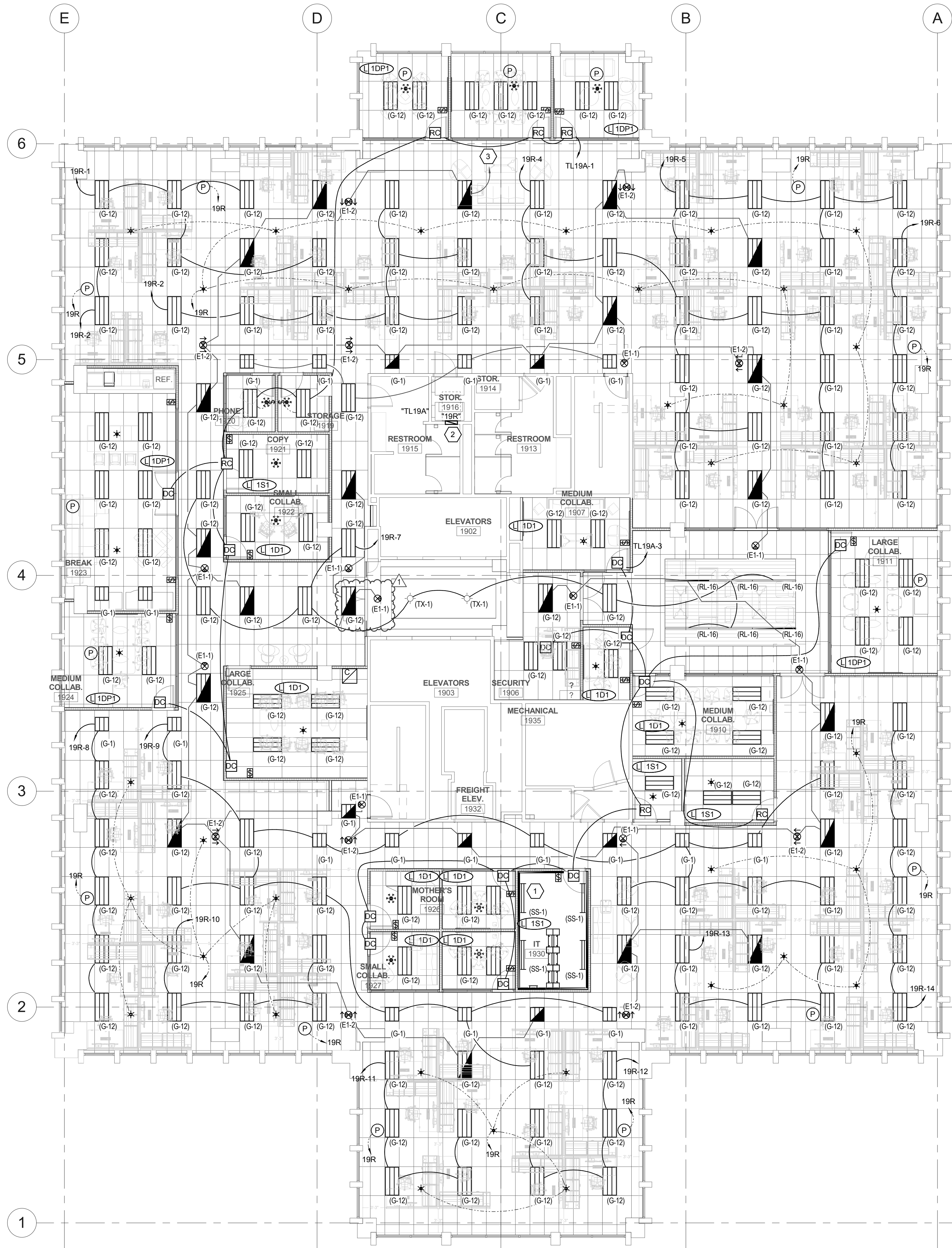
MARK	DATE	DESCRIPTION
1	2/5/2018	ADD #01
		8

ISSUE DATE: 12/23/09  
ISSUE TYPE: 100% CD  
DRAWN BY: Author  
CHECKED BY: Checker  
PROJECT#: 1750

SHEET NUMBER:  
**EP119**

C:\Users\tds\Other Documents\Revit Local Files\2017\20170641 - Elec WTC Central R17.tds\_spectrum-engineers.com.rvt

2/5/2018 9:18:18 AM ALL IDEAS, DESIGN, ARRANGEMENTS AND PLANS INDICATED OR REFERENCED BY THE DRAWING ARE OWNED BY AND THE PROPERTY OF A/C ARCHITECTS P.C. AND WERE CREATED, DEVELOPED, AND DEVELOPED FOR USE AND IN CONNECTION WITH THE SPECIFIC PROJECT. NONE OF THE IDEAS, DESIGN, ARRANGEMENTS OR PLANS SHALL BE USED BY OR DISCLOSED TO ANY PERSON, FIRM, OR CORPORATION FOR ANY PURPOSE WITHOUT THE WRITTEN CONSENT OF A/C ARCHITECTS P.C. WRITTEN DIMENSIONS ON THESE DRAWINGS SHALL HAVE PRECEDENCE OVER SCALE DIMENSIONS. CONTRACTORS SHALL VERIFY AND BE RESPONSIBLE FOR ALL DIMENSIONS AND CONDITIONS ON THE JOB AND THIS OFFICE MUST BE NOTIFIED OF ANY VARIATION FROM THE DIMENSIONS AND CONDITIONS SHOWN BY THESE DRAWINGS. WARNINGS: REPRODUCTION OF THIS DOCUMENT IS PROHIBITED WITHOUT THE WRITTEN CONSENT OF A/C ARCHITECTS P.C. UNAUTHORIZED DISCLOSURE MAY CONSTITUTE TRADE SECRET VIOLATION UNDER U.S.C. SEC. 505. UNAUTHORIZED DISCLOSURE MAY CONSTITUTE TRADE SECRET VIOLATION UNDER U.S.C. SEC. 505. UNAUTHORIZED DISCLOSURE MAY CONSTITUTE TRADE SECRET VIOLATION UNDER U.S.C. SEC. 505. UNAUTHORIZED DISCLOSURE MAY CONSTITUTE TRADE SECRET VIOLATION UNDER U.S.C. SEC. 505.



**A1** LEVEL 19 LIGHTING PLAN  
SCALE: 1/8" = 1'-0"

SHEET KEYNOTES	
1	WALL MOUNT LED STRIPLIGHTS IN THE IT ROOM. COORDINATE MOUNTING LOCATION WITH THE IT INSTALLERS.
2	PROVIDE NEW RECESSED RELAY PANEL MOUNTED ON REAR WALL OF ELECTRICAL ROOM.
3	CONNECT TO EXISTING EMERGENCY CIRCUIT PREVIOUSLY FEEDING EMERGENCY LIGHTING ON THIS FLOOR.

GENERAL SHEET NOTES	
1	CIRCUIT ALL EXIT SIGNS TO AN UNSWITCHED LEG OF THE EMERGENCY CIRCUIT INDICATED.
2	PROVIDE FULL-RANGE DIMMING AND DIMMING SWITCHES OF ALL FIXTURES IN THE PROJECT. PROVIDE AUTOMATIC DIMMING OF ALL FIXTURES LOCATED IN THE DAYLIGHT ZONES IN RESPONSE TO THE PHOTOCELLS LOCATED ALONG THE SAME FACADE.



ajc architects

703 east 1700 south  
salt lake city, utah 84105  
www.ajcarchitects.com



ARCHITECT / CONSULTANT

**SPECTRUM ENGINEERS**  
324 S. State St., Suite 400  
Salt Lake City, UT 84111  
800-678-7077  
801-328-5151  
fax: 801-328-5155  
www.spectrum-engineers.com

PROJECT DESCRIPTION

**INTERMOUNTAIN  
HEALTHCARE  
WORLD TRADE  
CENTER FLOOR 19**

60 SOUTH TEMPLE, SALT LAKE CITY,  
UTAH 84111  
AHJ STAMP

SHEET NAME:

**LEVEL 19 LIGHTING  
PLAN**

REVISIONS		
MARK	DATE	DESCRIPTION
1	2/5/2018	ADD #01
	8	

ISSUE DATE: 12/23/09  
ISSUE TYPE: 100% CD  
DRAWN BY: Author  
CHECKED BY: Checker  
PROJECT#: 1750

SHEET NUMBER:

**EL119**

## EQUIPMENT/CABLE LIST

THE ITEMS INDICATED BELOW SHALL NOT BE CONSTRUED AS A "BILL OF MATERIALS". THIS LIST IDENTIFIES ITEMS OF SIGNIFICANCE USED DURING THE DESIGN OF THE CABLING INSTALLATION. WHERE THE ITEMS INDICATED ARE ONE PORTION OF AN ASSEMBLY, THE ENTIRE ASSEMBLY SHALL BE PROVIDED UNLESS SPECIFIED OTHERWISE. PROVIDE ALL MISCELLANEOUS HARDWARE AND SUPPORTS WHICH MAY NOT BE LISTED HERE, FOR A COMPLETE INSTALLATION. COMPARE CATALOG NUMBERS WITH DESCRIPTIONS AND NOTIFY ENGINEER OF DISCREPANCIES PRIOR TO BID. IF CATALOG NUMBERS DO NOT MATCH DESCRIPTIONS, THE DESCRIPTIONS TAKE PRECEDENCE. PROVIDE COMPLETE SUBMITTAL FOR APPROVAL PRIOR TO PURCHASING ANY EQUIPMENT OR CABLE. REFER TO SPECIFICATIONS FOR ADDITIONAL REQUIREMENTS.

SYMBOL	ITEM DESCRIPTION	ACCEPTABLE TYPES
	STATION CABLE, DATA - CATEGORY 6A FUTP PLENUM, BLUE, DATA	SIEMON 9A6P4-A5-06-R1A
	STATION CABLE, DATA - CATEGORY 6A FUTP PLENUM, YELLOW, WIRELESS DATA	SIEMON 9A6P4-A5-05-R1A
	STATION CABLE, DATA - CATEGORY 6A FUTP PLENUM, GREEN VENDOR NETWORK	SIEMON 9A6P4-A5-07-R1A
	25 PAIR CATEGORY 3 RISER CABLE, GRAY	GENERAL CABLE 2133033 OR EQUAL
	FIBER OPTIC CABLE, SINGLE-MODE, 12 STRAND, ARMORED, PLENUM CABLE, YELLOW	SIEMON 9B08P012LE205A
	LC CONNECTOR, SIMPLEX SINGLE-MODE	SIEMON FC1-LC-SM-802
▽	VOICE OUTLET, SINGLE GANG FACEPLATE, WHITE W/WALL HUNG PHONE MOUNTING STUDS, ONE POSITION W/CATEGORY 6A INSERT	SIEMON MX-WP-Z6AS-SS
▽	DATA OUTLET, SINGLE GANG FACEPLATE, WHITE, 2 POSITION	SIEMON 10GMX-FPS02-02
	CATEGORY 6A JACK - DATA, BLUE	SIEMON Z6A-S06
F	DATA OUTLET, FURNITURE FACEPLATE, BLACK	SIEMON MX-UMA-01
	CATERGRPU 6A JACK - DATA, BLUE	SIEMON Z6A-S06
	BLANK MODULE, BLACK	SIEMON MX-BL-01
WAP	DATA OUTLET, SURFACE MOUNT BOX, WHITE, 2 POSITION	SIEMON MX-SMZ2-02
	CATEGORY 6A JACK - DATA, YELLOW	SIEMON Z6A-S05
	DATA OUTLET, SURFACE MOUNT BOX, WHITE, 1 POSITION	SIEMON MX-SMZ1-02
	CATEGORY 6A JACK - DATA, BLUE	SIEMON Z6A-S06
SPPT	48 PORT, 1RU ANGLE PATCH PANEL WITH OUTLETS	SIEMON Z6AS-PA-48
RPP1	48 PORT, 2RU ANGLE PATCH PANEL, 110 STYLE	SIEMON HD5-48A
FPP1	FIBER PATCH PANEL, 3RU	SIEMON RIC3-48-01
	SIX POSITION FIBER ADAPTOR PANEL, LC	SIEMON RIC-F-LCU12-01C
HWM	BLANK ADAPTER PLATE, BLACK	SIEMON RIG-F-BLNK-01
	HORIZONTAL WIRE MANAGERS, 4RU	PANDUIT NCMHAEF4
WWM	VERTICAL WIRE MANAGERS, DOUBLE SIDED, BLACK	CHATSWORTH 40096-703
	EQUIPMENT RACK, 7' x 19", 45RU, BLACK	CHATSWORTH 55053-703
	CABLE RUNWAY - 24", BLACK WITH ALL REQUIRED MOUNTING ACCESSORIES	CHATSWORTH 10250-724
	CABLE RUNWAY - 18", BLACK WITH ALL REQUIRED MOUNTING ACCESSORIES	CHATSWORTH 10250-718
	BUTT SPLICE KIT, BLACK	CHATSWORTH 11301-701
	JUNCTION SPLICE KIT, BLACK	CHATSWORTH 11302-701
	FOOT KIT, BLACK	CHATSWORTH 11309-701
	6" CHANNEL RACK TO RUNWAY, BLACK	CHATSWORTH 12409-724
	TRIANGLE BRACKETS, BLACK	CHATSWORTH 11746-724
	END CLOSING KIT, CABLE RUNWAY, BLACK	CHATSWORTH 11700-724
	WALL ANGLE SUPPORT KIT, CABLE RUNWAY, BLACK	CHATSWORTH 11421-724
	CABLE RUNWAY ELEVATION KIT, 6"	CHATSWORTH 10506-706
	CABLE RUNWAY RADIUS DROP	CHATSWORTH 12100-712
	STATION PATCH CABLE, CAT 6A SHIELDED, BLUE, 5'	SIEMON ZM6A-S0506
	STATION PATCH CABLE, CAT 6A SHIELDED, BLUE, 7'	SIEMON ZM6A-S0706
	STATION PATCH CABLE, CAT 6A SHIELDED, BLUE, 10'	SIEMON ZM6A-S1006
	STATION PATCH CABLE, CAT 5E, BLUE, 5'	SIEMON MC5-8T-05-B06C
	STATION PATCH CABLE, CAT 5E, BLUE, 7'	SIEMON MC5-8T-07-B06C
	STATION PATCH CABLE, CAT 5E, BLUE, 10'	SIEMON MC5-8T-10-B06C
	PATCH CABLE, FIBER, SINGLEMODE DUPLEX W/ LC CONNECTORS, YELLOW, 3 METER	J2-LCLCP-03
	PATCH CABLE, FIBER, SINGLEMODE DUPLEX W/ LC CONNECTORS, YELLOW, 5 METER	J2-LCLCP-05
	PLYWOOD BACKBOARD, 4' X 8', GRADE AC, FIRE TREATED & PAINTED	
	TELECOMMUNICATIONS MAIN GROUNDING BUS BAR	
	TELECOMMUNICATIONS GROUNDING BUS BAR	

NOTE: ALL RACKS, LADDER, PATCH PANELS AND ACCESSORIES SHALL BE BLACK IN COLOR.

### CABLE/OUTLET COLOR SCHEDULE

COLOR	TYPE
BLACK	TV COAX
BLUE	ANALOG PHONE
BLUE	DATA
BLUE	IP SECURITY CAMERAS
GREY	SECURITY CARD READERS
ORANGE	CLINICAL ENGINEERING / NURSE CALL
RED	FIRE SYSTEMS
RED	FORESEER
WHITE	PUBLIC ADDRESS
YELLOW	WIRELESS
GREEN	VENDOR NETWORK

## ABBREVIATIONS

NOTE: ALL ABBREVIATIONS MAY NOT BE USED.

A	AUGMENTED
CAT	CATEGORY
E	ENHANCED
EA	EACH
ER	EQUIPMENT ROOM
FPP	FIBER PATCH PANEL
GIG	GIGA HERTZ
HWM	HORIZONTAL WIRE MANAGEMENT
NIC	NOT IN CONTRACT
OE	OWNER ELECTRONICS
PNM	PLENUM
PR	PAIR
PS	POWER SUPPLY
RPP	RISER PATCH PANEL
SPP	STATION PATCH PANEL
TDR	TELECOMMUNICATIONS DISTRIBUTION ROOM
TYP	TYPICAL
VWM	VERTICAL WIRE MANAGEMENT

## DEFINITIONS

NOTE: ALL DEFINITIONS MAY NOT BE USED.

INDICATED: THE TERM "INDICATED" REFERS TO GRAPHIC REPRESENTATIONS, NOTES, OR SCHEDULES ON THE DRAWINGS, OTHER PARAGRAPHS OR SCHEDULES IN THE SPECIFICATIONS, AND SIMILAR REQUIREMENTS IN THE CONTRACT DOCUMENTS. WHERE TERMS SUCH AS "SHOWN", "NOTED", "SCHEDULED", AND "SPECIFIED" ARE USED, IT IS TO HELP THE READER LOCATE THE REFERENCE. NO LIMITATION ON LOCATION IS INTENDED.

DIRECTED: TERMS SUCH AS "DIRECTED", "REQUESTED", "AUTHORIZED", "SELECTED", "APPROVED", "REQUIRED", AND "PERMITTED" MEAN "DIRECTED BY THE ENGINEER", "REQUESTED BY THE ENGINEER", AND SIMILAR PHRASES.

APPROVE: THE TERM "APPROVED", WHERE USED IN CONJUNCTION WITH THE ENGINEER'S ACTION ON THE CONTRACTOR'S SUBMITTALS, APPLICATIONS, AND REQUESTS, IS LIMITED TO THE ENGINEER'S DUTIES AND RESPONSIBILITIES AS STATED IN GENERAL AND SUPPLEMENTARY CONDITIONS.

FURNISH: THE TERM "FURNISH" IS USED TO MEAN "SUPPLY AND DELIVER TO THE PROJECT SITE, READY FOR UNLOADING, UNPACKING, ASSEMBLY, INSTALLATION, AND SIMILAR OPERATIONS."

INSTALL: THE TERM "INSTALL" IS USED TO DESCRIBE OPERATIONS AT PROJECT SITE INCLUDING THE ACTUAL UNLOADING, UNPACKING, ASSEMBLY, ERECTION, PLACING, ANCHORING, APPLYING, WORKING TO DIMENSION, FINISHING, CURING, PROTECTING, CLEANING, AND SIMILAR OPERATIONS."

PROVIDE: THE TERM "PROVIDE" MEANS "TO FURNISH AND INSTALL, COMPLETE AND READY FOR THE INTENDED USE."

INSTALLER: AN "INSTALLER" IS THE CONTRACTOR OR AN ENTITY ENGAGED BY THE CONTRACTOR, EITHER AS AN EMPLOYEE, SUBCONTRACTOR, OR SUB-SUBCONTRACTOR, FOR PERFORMANCE OF A PARTICULAR CONSTRUCTION ACTIVITY, INCLUDING INSTALLATION, ERECTION, APPLICATION, AND SIMILAR OPERATIONS. INSTALLERS ARE REQUIRED TO BE EXPERIENCED IN THE OPERATIONS THEY ARE ENGAGED TO PERFORM.

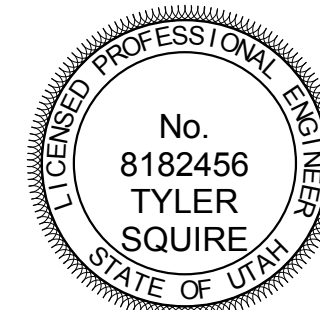
ELECTRONIC SYSTEMS: THE TERM "ELECTRONIC SYSTEMS" IS USED TO DESCRIBE ALL LOW VOLTAGE SYSTEMS GENERALLY REFERRED TO AS "SPECIAL SYSTEMS". THESE SYSTEMS INCLUDE BUT ARE NOT NECESSARILY LIMITED TO ALL SYSTEMS WHICH UTILIZE VOLTAGES OF LESS THAN 71 VOLTS SUCH AS SOUND SYSTEMS, VIDEO SYSTEMS, TV SYSTEMS, SECURITY SYSTEMS, VOICE AND DATA CABLING SYSTEMS, ETC...

## GENERAL PROJECT NOTES

- UNLESS OTHERWISE NOTED, INSTALL ALL CABLE INSIDE RACEWAY SYSTEMS. WHERE RACEWAY SYSTEMS HAVE NOT BEEN PROVIDED OR SPECIFIED, INSTALL CABLE THROUGH THE SPECIFIED "CADDY" CLIPS AT THE MINIMUM INTERVALS IDENTIFIED IN THE SPECIFICATIONS. SUPPORT "CADDY" CLIPS DIRECTLY FROM THE BUILDING STRUCTURE, NOT FROM OTHER BUILDING SYSTEM SUPPORT WIRES OR CABLE.
- PROVIDE PLENUM RATED CABLE IN ALL AIR PLENUMS. IF A PLENUM RATED CABLE IS NOT SPECIFIED, PROVIDE THE PLENUM RATED EQUIVALENT TO THE SPECIFIED CABLE.
- LABEL ALL CABLE INSTALLED UNDER THIS CONTRACT REGARDLESS OF LENGTH.
- THE EQUIPMENT LABELING IDENTIFIED ON DETAILS IN THESE DRAWINGS ARE EXAMPLES ONLY OF THE ACTUAL LABELING WHICH IS REQUIRED AS PART OF THIS CONTRACT. PRIOR TO FABRICATION, SUBMIT THE NOMENCLATURE FOR ALL LABELS TO THE OWNER FOR REVIEW. THIS REQUIREMENT INCLUDES BUT IS NOT LIMITED TO ALL CABLE LABELING, AND ALL EQUIPMENT LABELING.
- IF OUTLET IS TERMINATED IN CEILING SPACE, LABEL THE T-BAR GRID WITH THE OUTLET NUMBER FOR EASY LOCATION AND IDENTIFICATION.
- GROUND ALL EQUIPMENT RACKS INSTALLED UNDER THIS CONTRACT IN COMPLIANCE WITH THE CONTRACT DOCUMENTS.
- PROVIDE THE QUANTITY OF PATCH PANELS REQUIRED +20% FOR THE TOTAL DATA OUTLETS SHOWN ON FLOOR PLANS FOR THE PARTICULAR LEVEL.
- RACK SPACE ALLOCATION SHOULD BE FOLLOWED PER DRAWINGS. IF YOU HAVE A SYSTEM THAT HAS NO RACK SPACE ALLOCATED PLEASE CALL BOE SAUSED0 AT 801-707-3805
- ENSURE ALL BASKET TRAY AND COMMUNICATIONS CONDUITS HAVE BEEN GROUNDED TO THE TEG/TDR, USING A MINIMUM #6 CU.
- CONTRACTOR TO LOOSELY BUNDLE ALL CABLES TOGETHER BY FLOOR OR ORIGINATION.
- FOR EVERY CABLE PULL SPECIFIED, COIL 15' OF EXCESS CABLE AT THE STATION END FOR FUTURE USE AND 3'-0" OF EXCESS CABLE AT THE TDR END. NEATLY COIL AND SECURE CABLE ABOVE THE CEILING OR BELOW FLOOR WHERE APPLICABLE.
- COORDINATE WITH ALL SUBS TO ENSURE THAT ALL CABLES ARE PROTECTED FROM ANY DIRECT PAINT OR INCIDENTAL OVERSPRAY.



703 east 1700 south  
salt lake city, utah 84105  
www.ajcarchitects.com



ARCHITECT / CONSULTANT



PROJECT DESCRIPTION

**INTERMOUNTAIN  
HEALTHCARE  
WORLD TRADE  
CENTER FLOOR 19**

60 SOUTH TEMPLE, SALT LAKE CITY,  
UTAH 84111  
AHJ SIAMP

SHEET NAME:

**TELECOM SCHEDULES  
AND NOTES**

REVISIONS

MARK	DATE	DESCRIPTION
1	2/5/201	ADD #01
		8

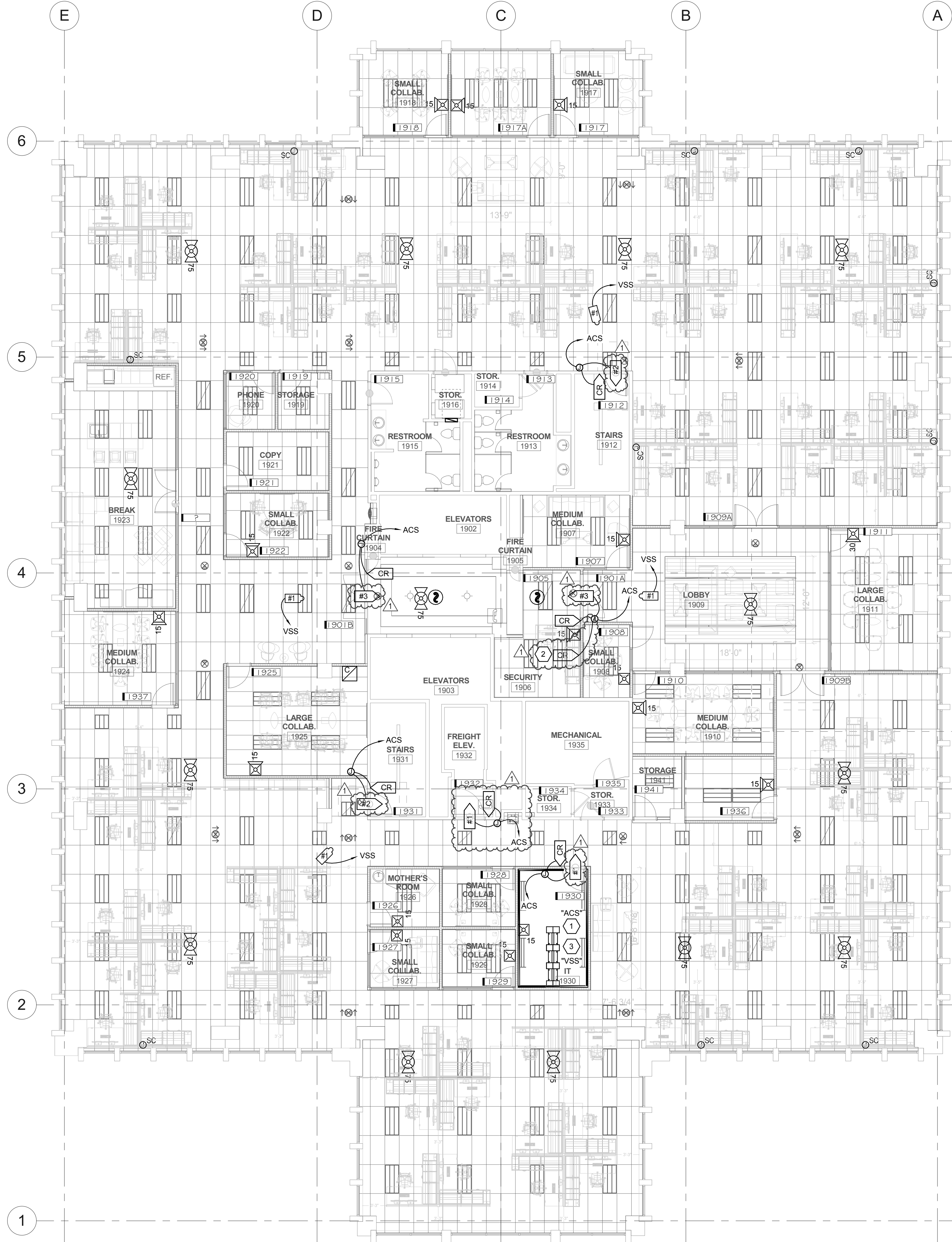
ISSUE DATE: 1/19/2018  
ISSUE TYPE: 100% CD  
DRAWN BY: SJT  
CHECKED BY: JDA  
PROJECT#: 1750

SHEET NUMBER:

ET001

C:\Users\jds\Other Documents\Revit Local Files\2017\20170641 - Elec WTC Central R17\_1ds\_spectrum-engineers.com.rvt

2/5/2018 9:18:51 AM ALL IDEAS, DESIGN, ARRANGEMENTS AND PLANS INDICATED OR REPRESENTED BY THE DRAWING ARE OWNED BY AND THE PROPERTY OF A/C ARCHITECTS P.C. AND WERE CREATED, DEVELOPED, AND DEVELOPED FOR THE ON AND IN CONNECTION WITH THE SPECIFIED PROJECT. NONE OF THE IDEAS, DESIGN, ARRANGEMENTS OR PLANS SHALL BE USED BY OR DISCLOSED TO ANY PERSON, FIRM, OR CORPORATION FOR ANY PURPOSE WHATSOEVER WITHOUT WRITTEN CONSENT OF A/C ARCHITECTS P.C. WRITTEN DIMENSIONS ON THESE DRAWINGS SHALL HAVE PRECEDENCE OVER SCALE DIMENSIONS. COMMERCIALS SHALL VERIFY AND BE RESPONSIBLE FOR ALL DIMENSIONS AND CONDITIONS ON THE JOB AND THIS OFFICE MUST BE NOTIFIED OF ANY VARIATION FROM THE DIMENSIONS AND CONDITIONS SHOWN BY THESE DRAWINGS. WARNING: REPRODUCTION OF THIS DOCUMENT IS PROHIBITED WITHOUT THE WRITTEN PERMISSION OF A/C ARCHITECTS P.C. UNAUTHORIZED REPRODUCTION MAY CONSTITUTE TRADE SECRET VIOLATION UNDER U.S.C. SEC. 505. UNAUTHORIZED REPRODUCTION MAY CONSTITUTE TRADE SECRET VIOLATION UNDER U.S.C. SEC. 505. UNAUTHORIZED REPRODUCTION MAY CONSTITUTE TRADE SECRET VIOLATION UNDER U.S.C. SEC. 505. UNAUTHORIZED REPRODUCTION MAY CONSTITUTE TRADE SECRET VIOLATION UNDER U.S.C. SEC. 505.



**1 LEVEL 19 AUXILIARY PLAN**  
SCALE: 1/8" = 1'-0"

**SHEET KEYNOTES**

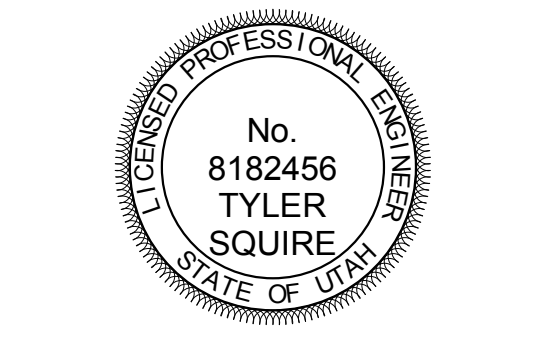
- ACCESS CONTROL SYSTEM SHALL BE RACK MOUNTED EQUIPMENT.
- PROVIDE "REQUEST TO OPEN" CARD READER FOR LOBBY DOORS LOCK/ADA OPERATION. BOTH DOORS 2200A AND 2200B SHALL BE OPERATED BY THE SAME CARD READER.
- PROVIDE CARD READER FOR LOBBY DOORS 'LOCKDOWN' FUNCTION.

**GENERAL SHEET NOTES**

- ALL FIRE ALARM WORK MUST BE COMPLETED BY PST.



703 east 1700 south  
salt lake city, utah 84105  
www.ajcarchitects.com



ARCHITECT / CONSULTANT  
**SPECTRUM ENGINEERS**  
324 S. State St., Suite 400  
Salt Lake City, UT 84111  
801-678-7077  
801-328-5151  
fax: 801-328-5155  
www.spectrum-engineers.com

PROJECT DESCRIPTION  
**INTERMOUNTAIN HEALTHCARE WORLD TRADE CENTER FLOOR 19**

60 SOUTH TEMPLE, SALT LAKE CITY, UTAH 84111  
AHJ STAMP

SHEET NAME:  
**LEVEL 19 AUXILIARY PLAN**

REVISIONS

MARK	DATE	DESCRIPTION
1	2/5/201	ADD #01
	8	

ISSUE DATE: 1/19/2018  
ISSUE TYPE: 100% CD  
DRAWN BY: Author  
CHECKED BY: Checker  
PROJECT#: 1750

SHEET NUMBER:

**EY119**

C:\Users\tds\Other Documents\Revit Local Files\2017\20170641 - Elec WTC Central R17\_tds\_spectrum-engineers\_com.rvt  
 2/5/2018 9:20:18 AM  
 ALL IDEAS, DESIGNS, ARRANGEMENTS AND PLANS INDICATED OR REPRESENTED BY THE DRAWING ARE OWNED BY AND THE PROPERTY OF A/C ARCHITECTS P.C. AND DEVELOPED FOR THE USE AND IN CONNECTION WITH THE SPECIFIC PROJECT. NONE OF THE IDEAS, DESIGNS, ARRANGEMENTS OR PLANS SHALL BE USED BY OR DECIDED TO ANY PERSON, FIRM, OR CORPORATION FOR ANY PURPOSE WHATSOEVER WITHOUT WRITTEN CONSENT OF A/C ARCHITECTS P.C. WRITTEN DIMENSIONS ON THESE DRAWINGS SHALL HAVE PRECEDENCE OVER SCALE DIMENSIONS. CONTRACTORS SHALL VERIFY AND BE RESPONSIBLE FOR ALL DIMENSIONS AND CONDITIONS ON THE JOB AND THE OFFICE MUST BE NOTIFIED OF ANY VARIATIONS FROM THE DIMENSIONS AND CONDITIONS SHOWN BY THESE DRAWINGS. WARNING: REPRODUCTION OR TRANSMISSION OF THIS DOCUMENT IS PROHIBITED WITHOUT WRITTEN CONSENT OF A/C ARCHITECTS P.C.

- ### NOTES
- PROVIDE RACEWAY AND EQUIPMENT AS INDICATED FOR CARD ACCESS DOOR TYPE INDICATED. REFER TO SECTION 281300 AND CARD ACCESS LOCK CONTROL DETAILS FOR ADDITIONAL REQUIREMENTS.
  - PROVIDE CONCEALED .75" C TYPICAL FOR LINES SHOWN TO DEVICE BOXES ON PROTECTED SIDE AND UNPROTECTED SIDE ELEVATIONS.
  - CONFIRM CORRECT CARD ACCESS DOOR RACEWAY, LOCK VOLTAGE, AND EXIT SWITCH CURRENT RATING (2 AMPS MIN.) WITH DIV. 8 FURNISHED CARD ACCESS DOOR HARDWARE PER DIV. 8 DOOR HARDWARE SPECIFICATIONS.
  - LOCATE CARD READER BOX AS INDICATED ON FLOOR PLANS. RACEWAY AND BOXES BY DIV. 26. REFER TO 281300 FOR CARD ACCESS SYSTEM REQUIREMENTS.
  - DOUBLE 4SQ J-BOX ON PROTECTED SIDE OF DOORWAY (SIDE OPPOSITE OF CARD READER) ABOVE ACCESSIBLE CEILING OR IN OTHER ACCESSIBLE LOCATION. PROVIDE COVER FOR J-BOX.
  - ELECTRIC LOCKING HARDWARE (MAG LOCKS, ELECTRIC STRIKES, POWER TRANSFER HINGES, ETC.) BY DIV 8. REVIEW DOOR HARDWARE FURNISHED AND VERIFY LOCK VOLTAGES AND OPERATIONAL FUNCTIONALITY OF LOCKS. CONTACT ENGINEER WITH QUESTIONS OR CONCERNS.

- ### ABBREVIATIONS
- DBL = DOUBLE
  - DIR = DIRECTION
  - HDWR = HARDWARE
  - C = CONDUIT
  - 4SQ = FOUR SQUARE
  - W/ = WITH
  - 1G = 1 GANG
  - PWR = POWER
  - ACC = ACCESSIBLE
  - OCC = OCCUPANCY
  - TYP = TYPICAL
  - L/PS = LOCK POWER SUPPLY
  - CR = CARD READER
  - CI = DOOR CONTACT INDICATOR
  - EPT = ELECTRIC POWER TRANSFER
  - ES = ELECTRIC STRIKE
  - ED = EXIT DEVICE
  - ML = ELECTROMAGNETIC LOCK
  - KS = KEY SWITCH
  - ACS = ACCESS CONTROL SYSTEM
  - EL = ELECTRIC LOCKSET
  - MD = MOTION DETECTOR
  - TLC = TIME/SYSTEM LOCK CONTROL
  - ELC = EMERGENCY LOCK CONTROL
  - IDS = INTRUSION DETECTION SYSTEM
  - ADA = AUTO DOOR OPENER
  - REX = REQUEST TO EXIT
  - FA = FIRE ALARM SYSTEM
  - OFF = OBTAIN FROM PLANS
  - A/R = AS REQUIRED
  - EED = ELECTRIC EXIT DEVICE (SEE SECTION 87100)
  - AEL = ACCESS ELECTRIC LOCKSET (SEE SECTION 87100)
  - FH = FRAME HARNESS
  - DH = DOOR HARNESS
  - EH = ELECTRIC HINGE
  - LA = ELECTROLYNX ADAPTOR
  - CNT = CONTROLLER
  - HO = ELECTROMAGNETIC HOLDER
  - PTE = PUSH TO EXIT BUTTON (MAGLOCK)
  - RTO = REQUEST TO OPEN

### CARD ACCESS DOOR TYPE SCHEDULE

DOOR TYPE #	SYMBOL	DESCRIPTION	PROTECTED SIDE ELEVATION	UNPROTECTED SIDE ELEVATION	LOCK TYPE(S)	DIVISION OF WORK AND COMMENTS
TYPE 1		SINGLE DOOR, 1 CARD READER (FREE EGRESS)			ELECTRIC STRIKE W/LOCKSET	<b>SECURITY CONTRACTOR PROVIDES:</b> • CR, L/PS, CI, MD <b>HARDWARE CONTRACTOR PROVIDES:</b> • ES <b>LOCK CONTROLLED BY:</b> • CR
TYPE 2		SINGLE DOOR, 1 CARD READER, (FREE EGRESS)			ELECTRIC LOCKSET	<b>SECURITY CONTRACTOR PROVIDES:</b> • CR, L/PS <b>HARDWARE CONTRACTOR PROVIDES:</b> • EL <b>LOCK CONTROLLED BY:</b> • CR, FA
TYPE 3		DOUBLE DOOR, 1 CARD READER WITH AUTO OPENER			MAG LOCK W/ AUTO OPENER	<b>SECURITY CONTRACTOR PROVIDES:</b> • CR, MD, L/PS, RTO, PTE <b>HARDWARE CONTRACTOR PROVIDES:</b> • ML, ADA <b>LOCK CONTROLLED BY:</b> • CR, ADA, PTE, TLC, FA, RTO

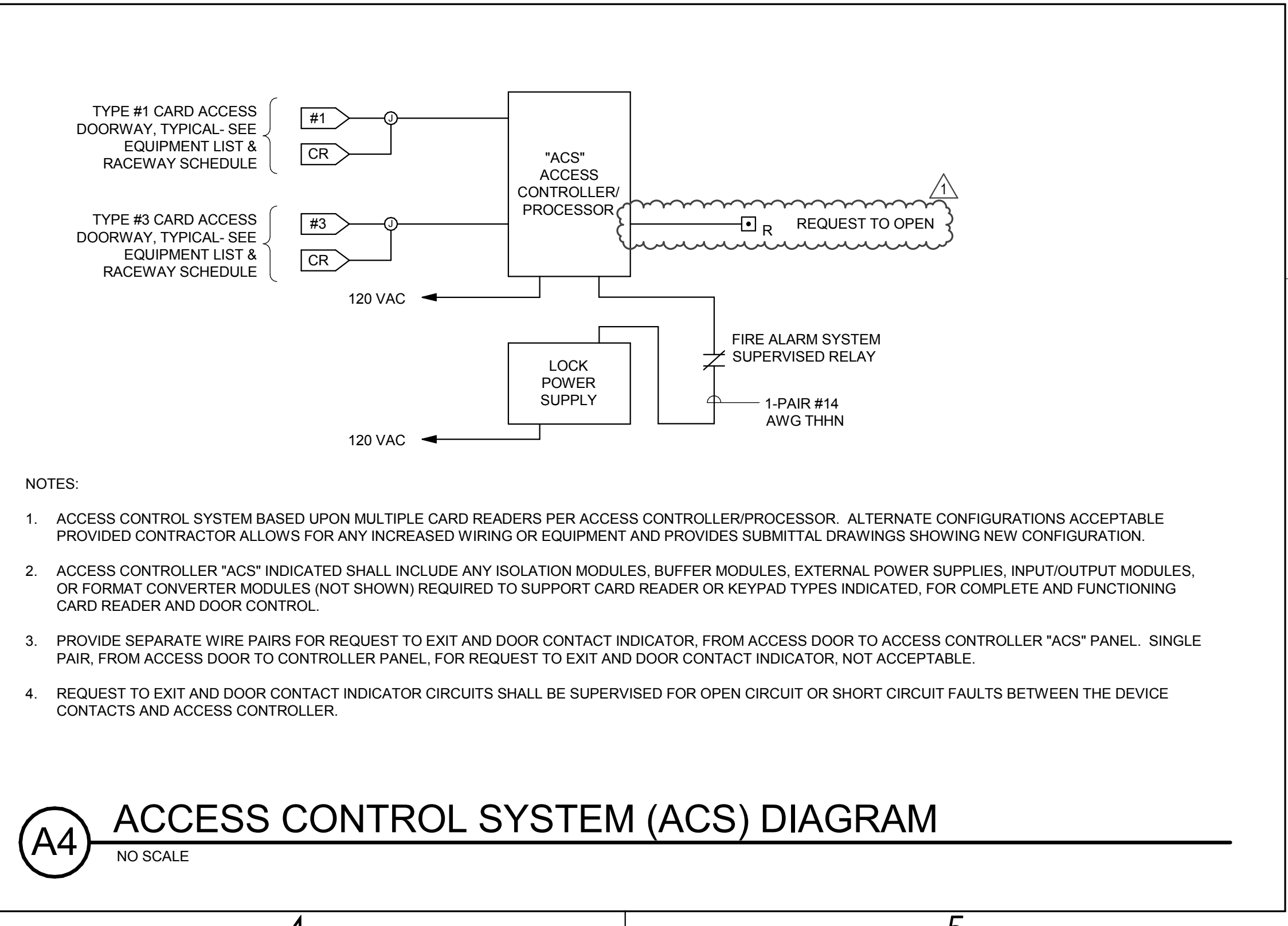
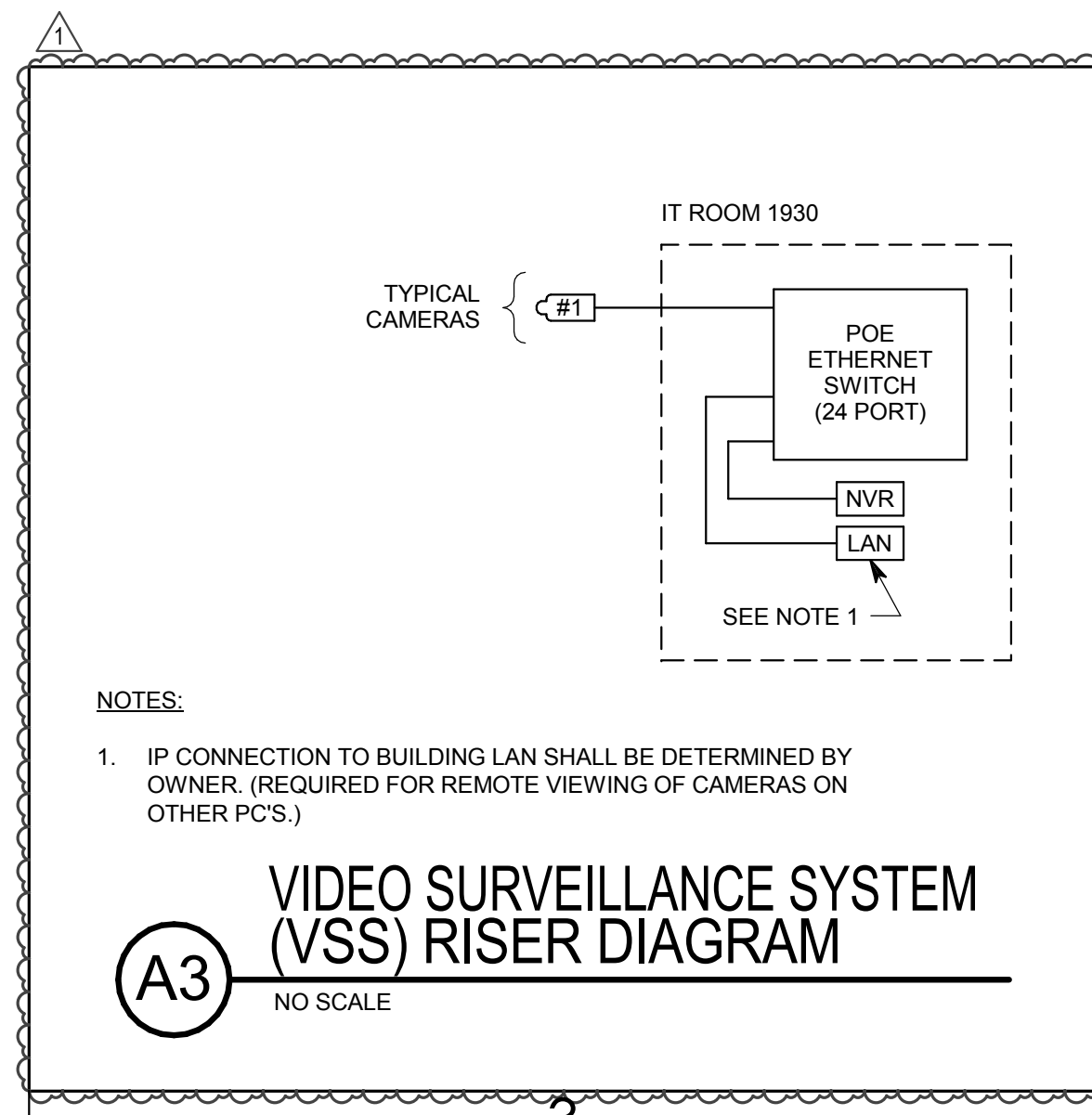
### VSS CAMERA SCHEDULE

TYPE	INTERIOR (INT)/ EXTERIOR (EXT)	DESCRIPTION	AXIS MODEL #
1	INT	FIXED DOME, VARIFOCAL, CEILING MOUNT	P3374

### SECURITY EQUIPMENT SCHEDULE

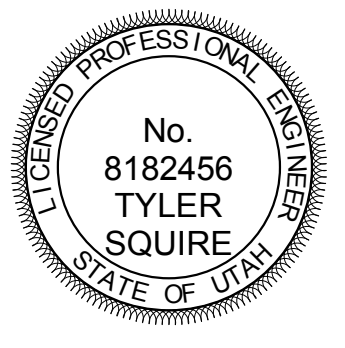
SYMBOL	DESCRIPTION	MOUNTING *	ROUGH-IN	QTY	ACCEPTABLE TYPES
	CARD READER	40"	4SQ W/ 1G RING	OFF	SEE SECTION 281300
	CARD ACCESS DOOR TYPE, TYPICAL. REFER TO CARD ACCESS DOOR TYPE SCHEDULE.	SEE SCHEDULE	SEE SCHEDULE	OFF	REFER TO CARD ACCESS DOOR TYPE SCHEDULE & SECTION 281300
#1 symbol	VSS CAMERA/ENCLOSURE TYPE, TYPICAL. REFER TO VSS CAMERA/ENCLOSURE TYPE SCHEDULE.	SEE SCHEDULE	SEE SCHEDULE	OFF	SEE VSS CAMERA/ENCLOSURE TYPE SCHEDULE
	CARD ACCESS CONTROLLERS & PWR SUPPLIES	72"	4"x4" GUTTER & STUBS AIR	A/R	SEE SECTION 281300

\* COORDINATE MOUNTING HEIGHTS WITH ARCHITECTURAL ELEVATIONS BEFORE INSTALLATION.



**ajc architects**

703 east 1700 south  
salt lake city, utah 84105  
www.ajcarchitects.com



ARCHITECT / CONSULTANT

**SPECTRUM ENGINEERS**  
 324 S. State St., Suite 400  
 Salt Lake City, UT 84111  
 801-678-7077  
 801-328-5151  
 fax: 801-328-5155  
 www.spectrum-engineers.com

PROJECT DESCRIPTION

**INTERMOUNTAIN HEALTHCARE WORLD TRADE CENTER FLOOR 19**

60 SOUTH TEMPLE, SALT LAKE CITY, UTAH 84111  
AHJ STAMP

SHEET NAME:

**AUXILIARY RISER DIAGRAMS**

REVISIONS

MARK	DATE	DESCRIPTION
1	2/5/2018	ADD #01
		8

ISSUE DATE: 1/19/2018  
 ISSUE TYPE: 100% CD  
 DRAWN BY: Author  
 CHECKED BY: Checker  
 PROJECT#: 1750

SHEET NUMBER:

**EY601**