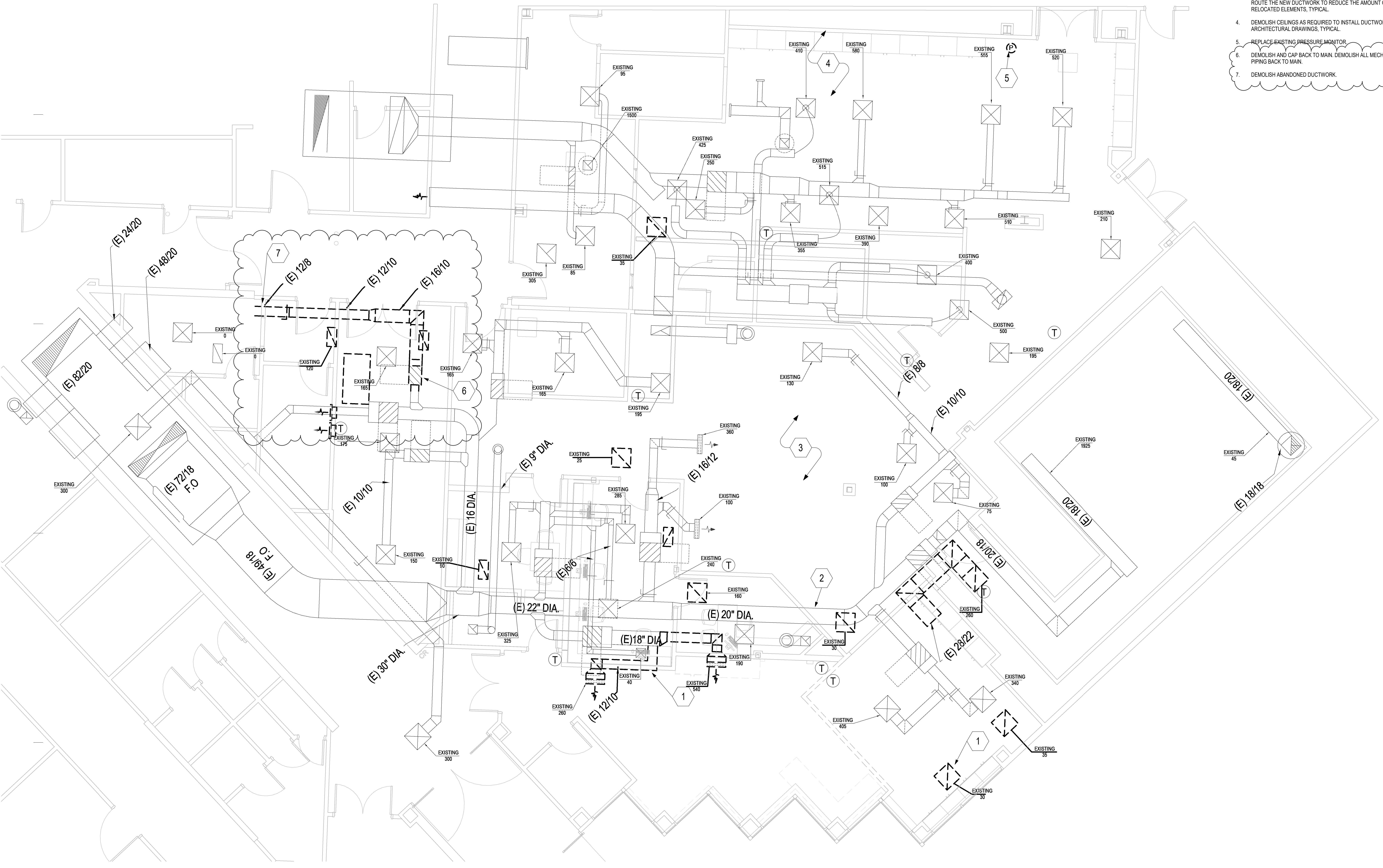




- KEYED NOTES**
- ELEMENTS SHOWN DARK AND DASHED TO BE DEMOLISHED, TYPICAL.
  - EXISTING ELEMENTS SHOWN LIGHT TO REMAIN, TYPICAL.
  - CONTRACTOR WILL BE RESPONSIBLE TO FIELD VERIFY ALL EXISTING CONDITIONS. ANY PIPING, PLUMBING, CONTROL VALVES, MEDICAL GASSES, CONDUIT, DUCTWORK, ETC. THAT IS IN THE PATH OF THE NEW RETURN DUCT SHALL BE RELOCATED. ROUTE THE NEW DUCTWORK TO REDUCE THE AMOUNT OF RELOCATED ELEMENTS, TYPICAL.
  - DEMOLISH CEILINGS AS REQUIRED TO INSTALL DUCTWORK. SEE ARCHITECTURAL DRAWINGS, TYPICAL.
  - REPLACE EXISTING PRESSURE MONITOR.
  - DEMOLISH AND CAP BACK TO MAIN. DEMOLISH ALL MECHANICAL PIPING BACK TO MAIN.
  - DEMOLISH ABANDONED DUCTWORK.



**1** MECHANICAL DEMO PLAN LEVEL 1  
SCALE: 1/4" = 1'-0"



Intermountain Health Care  
**TOSH**  
Central Processing Remodel

5848 South 300 East  
Murray, Utah 84107

NJRA Project # 19234.00  
Construction Documents Aug 18, 2020  
1 Addendum # 2 09-16-20

**MECHANICAL  
DEMO PLAN  
LEVEL 1**

**MD101**

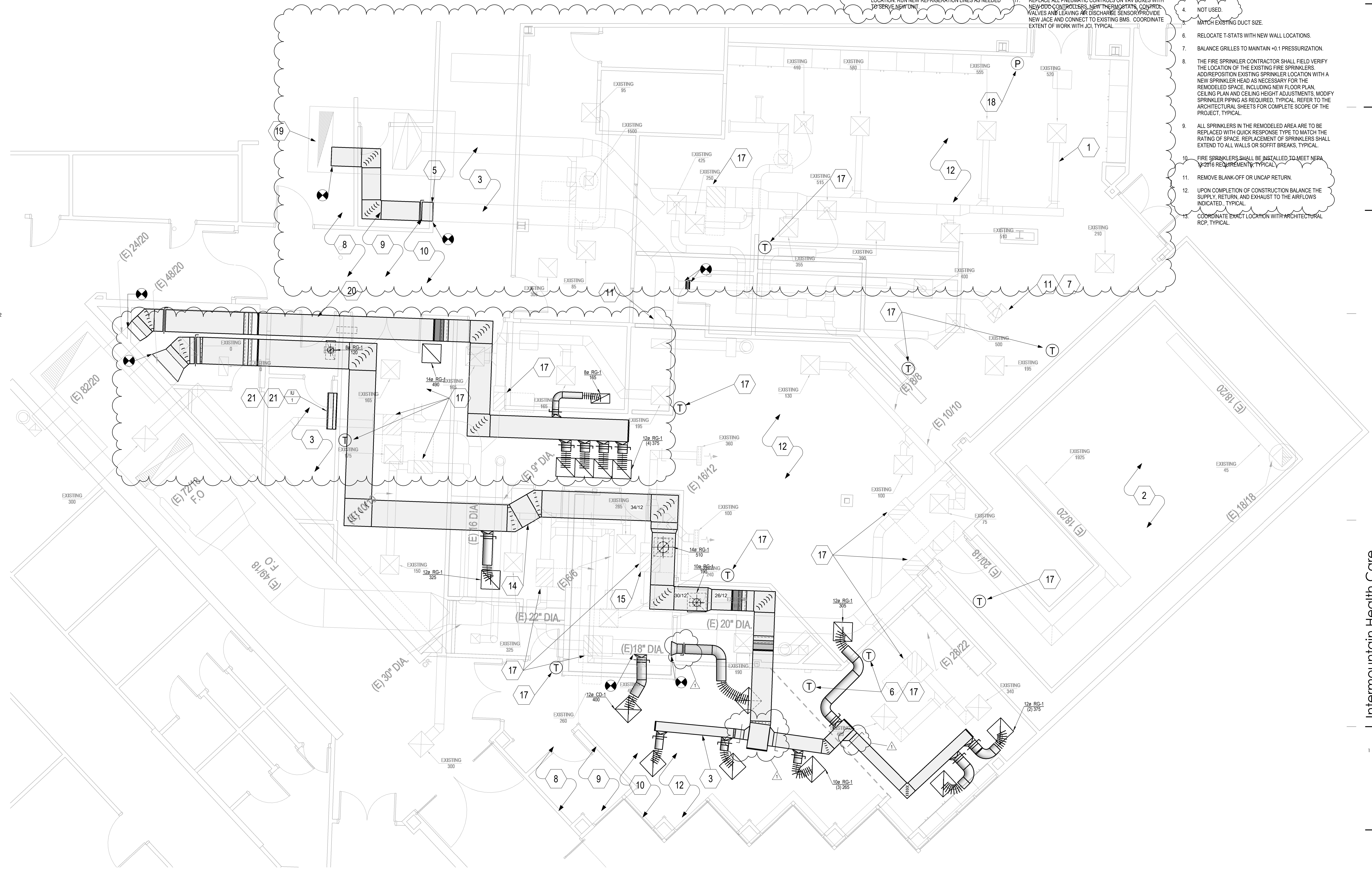
9/16/2020 9:26:54 AM



**KEYED NOTES**

1. EXISTING ELEMENTS SHOWN LIGHT TO REMAIN, TYPICAL.
2. REBALANCE ROOM TO BE 6 ACH (680 CFM).
3. CONTRACTOR WILL BE RESPONSIBLE TO FIELD VERIFY ALL EXISTING CONDITIONS. ANY PIPING, PLUMBING, CONTROL VALVES, MEDICAL GASSES, CONDUIT, DUCTWORK, ETC. THAT IS IN THE PATH OF THE NEW RETURN DUCT SHALL BE RELOCATED. ROUTE THE NEW DUCTWORK TO REDUCE THE AMOUNT OF RELOCATED ELEMENTS, TYPICAL.
4. NOT USED.
5. MATCH EXISTING DUCT SIZE.
6. RELOCATE T-STATS WITH NEW WALL LOCATIONS.
7. BALANCE GRILLES TO MAINTAIN +0.1 PRESSURIZATION.
8. THE FIRE SPRINKLER CONTRACTOR SHALL FIELD VERIFY THE LOCATION OF THE EXISTING FIRE SPRINKLERS. ADD/REPOSITION EXISTING SPRINKLER LOCATION WITH A NEW SPRINKLER HEAD AS NECESSARY FOR THE REMODELED SPACE, INCLUDING NEW FLOOR PLAN, CEILING PLAN AND CEILING HEIGHT ADJUSTMENTS. MODIFY SPRINKLER PIPING AS REQUIRED. TYPICAL REFER TO THE ARCHITECTURAL SHEETS FOR COMPLETE SCOPE OF THE PROJECT, TYPICAL.
9. ALL SPRINKLERS IN THE REMODELED AREA ARE TO BE REPLACED WITH QUICK RESPONSE TYPE TO MATCH THE RATING OF SPACE. REPLACEMENT OF SPRINKLERS SHALL EXTEND TO ALL WALLS OR SOFFIT BREAKS, TYPICAL.
10. FIRE SPRINKLERS SHALL BE INSTALLED TO MEET NFPA 13-2016 REQUIREMENTS, TYPICAL.
11. REMOVE BLANK-OFF OR UNCAP RETURN.
12. UPON COMPLETION OF CONSTRUCTION BALANCE THE SUPPLY, RETURN, AND EXHAUST TO THE AIRFLOWS INDICATED, TYPICAL.
13. COORDINATE EXACT LOCATION WITH ARCHITECTURAL RCP, TYPICAL.

14. PROVIDE OFFSETS IN DUCTWORK TO AVOID STRUCTURE. GENERALLY RETURN WILL NEED TO BE TIGHT TO STRUCTURE TO AVOID EXISTING SYSTEMS. HOWEVER, EXISTING SYSTEMS WILL NEED TO BE RELOCATED TO ACCOMMODATE NEW DUCTWORK. TYPICAL. CONTRACTOR RESPONSIBLE FOR ADDING IN ALL NECESSARY OFFSETS FOR ROUTING OF DUCTWORK.
15. RELOCATE EXISTING VAV BOXES THAT IS IN THE PATH OF THE RETURN PATH.
16. REBALANCE REGISTER TO BE NEUTRAL.
17. REPLACE ALL PNEUMATIC CONTROLS ON VAV BOXES WITH NEW GFCI CONTROLS. LIGHT THERMOSTATS, CONTROL VALVES AND LEAVING AIR DISCHARGE SENSOR. PROVIDE NEW JACE AND CONNECT TO EXISTING BMS. COORDINATE EXTENT OF WORK WITH JCI, TYPICAL.
18. PROVIDE NEW DIGITAL PRESSURE MONITOR. INTERCONNECT TO BMS.
19. EXTEND BOTTOM OF DUCT AND CAP.
20. DEMOLISH ABANDONED PLUMBING AND MEDICAL GAS LINES BACK TO MAIN AND CAP.
21. RUN CONDENSATE TO SAME LOCATION AS EXISTING SPLIT SYSTEM.
22. DEMOLISH EXISTING CONDENSING UNIT DEMOLISHED INDOOR UNIT. INSTALL NEW OUTDOOR UNIT AT SAME LOCATION. RUN NEW REFRIGERATION LINES AS NEEDED TO SERVE LIGHT UNIT.



**1 MECHANICAL PLAN LEVEL 1**  
SCALE: 1/4" = 1'-0"

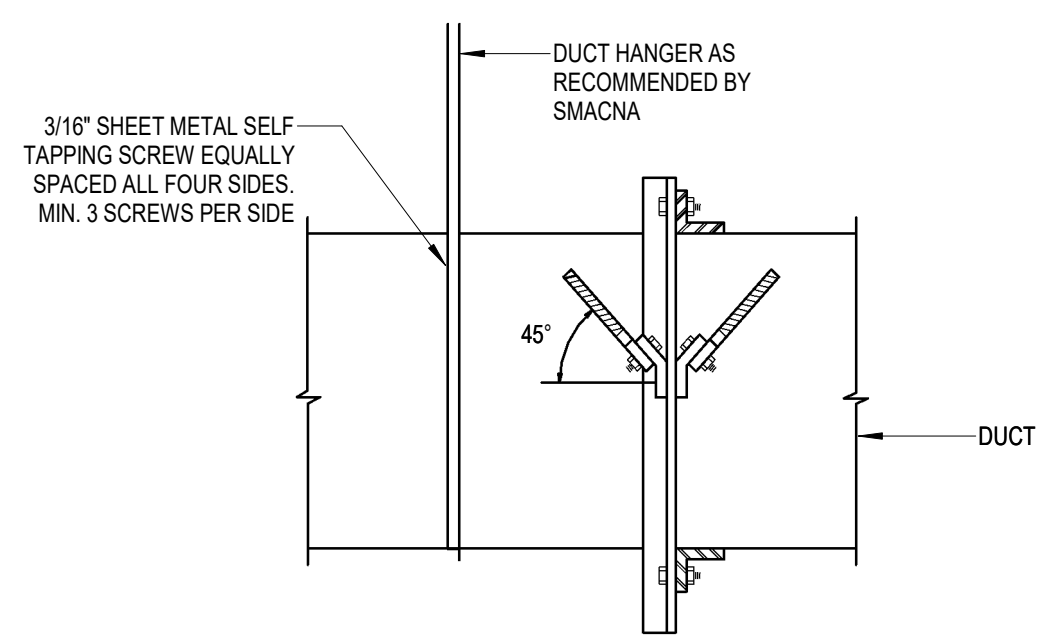
9/16/2020 9:26:59 AM



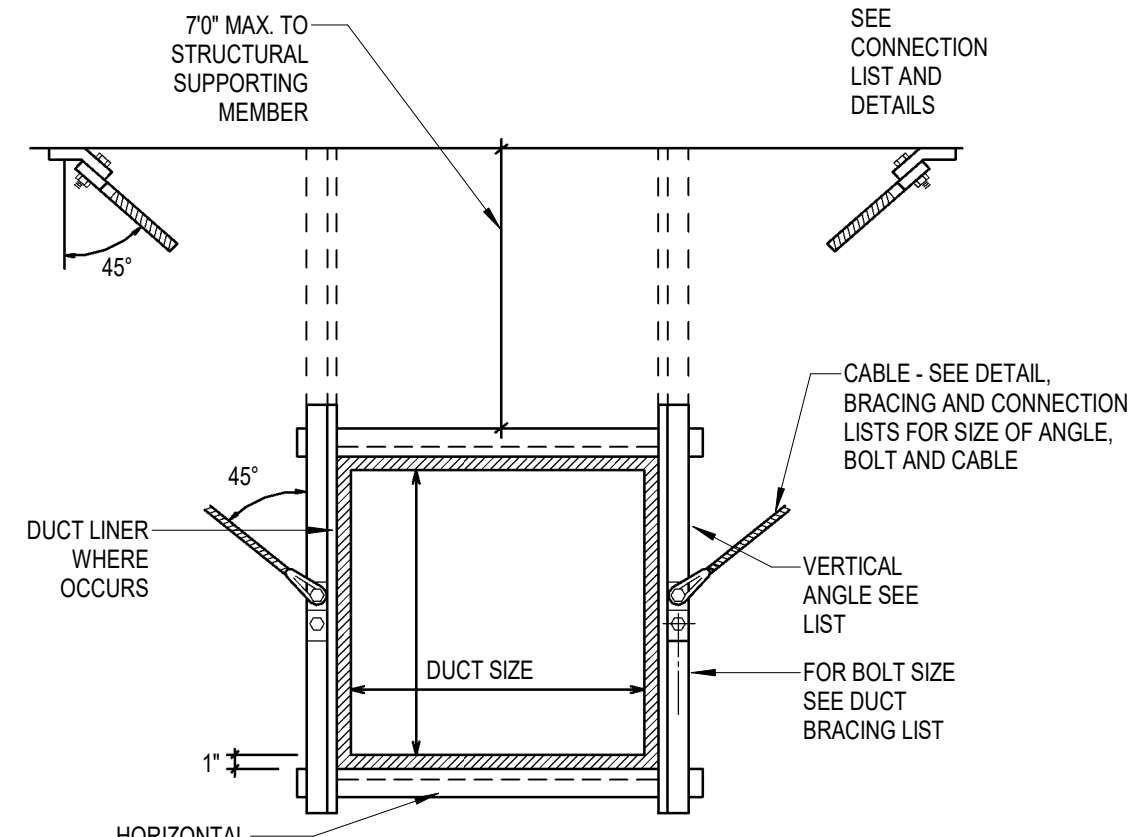
DIFFUSERS, REGISTERS, AND GRILLES			
DIFFUSER CALLOUT	MANUFACTURER	MODEL	DESCRIPTION
CD-1	PRICE	SCD	LOUVER FACE (3-CONE) CEILING DIFFUSERS. ADJUSTABLE AIR PATTERN. C.W./O.B.D. FRAME SHALL BE FOR LAY-IN 24X24 MOUNTING.
RG-1	PRICE	PDDR	PERFORATED GRILLE: FRAME SHALL BE FOR LAY-IN MOUNTING OR SURFACE MOUNT AS REQUIRED BY CEILING TYPE. LAY-IN FRAMES SHALL BE 24"X24" OR 24"X12". HARD LID CEILING TO BE 24"X24" OR 12"X12" AS REQUIRED TO FIT CEILING SPACE AVAILABLE WITH LAY-IN PLASTER FRAME. FINISH AS SELECTED BY ARCHITECT.

VRF SCHEDULE																			
INDOOR UNIT							OUTDOOR UNIT												
ID	MANUFACTURER/ AND MODEL NUMBER	LOCATION	CORRECTED COOLING CAPACITY (BTUH)	MAX CFM	DIMENSIONS W" x H" x D"	WEIGHT (LBS.)	AMPS (MCA)	VOLTS/PH/Hz	ID	MANUFACTURER/ AND MODEL NUMBER	LOCATION	CORRECTED COOLING CAPACITY (BTUH)	DIMENSIONS W" x H" x D"	WEIGHT (LBS.)	AMPS (MCA)	VOLTS/PH/Hz	LIQUID	GAS	NOTES
IU-1	DAIKIN PKA-A36KA7	DATA (125)	30,463	920	41" x 14" x 12"	55	POWERED BY OUTDOOR	208/1/60	OU-1A	DAIKIN PLY-A36NKA7	ROOF	33143	41" x 52" x 13"	255	25	208/1/60	S/B	S/B	1-7

1. CAPACITIES RATED AT THE FOLLOWING OUTDOOR CONDITIONS: COOLING - 95 DEG. F. D.B., 75 DEG. F. W.B.  
2. CAPACITIES RATED AT THE FOLLOWING INDOOR CONDITIONS: COOLING - 80 DEG. F. D.B., 67 DEG. F. W.B.  
3. PROVIDE LOW AMBIENT HEAD CONTROLLER TO ALLOW COOLING OPERATION DOWN TO 0 DEG. F. D.B.  
4. R410A REFRIGERANT.  
5. WIRELESS REMOTE CONTROLLER. PROVIDE WALL MOUNTED HOLDER.  
6. PROVIDE ACCESSORY CONDENSATE PUMP FOR INDOOR UNIT.  
7. VERIFY ID NUMBER WITH EXISTING EQUIPMENT.



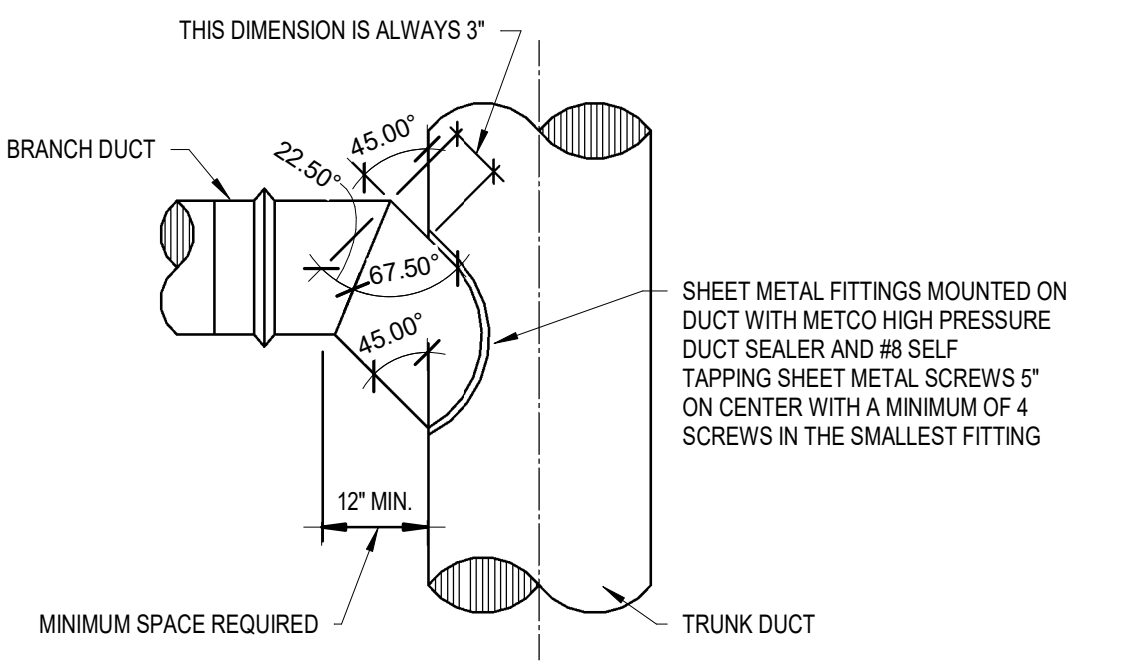
SIDE VIEW



FRONT VIEW

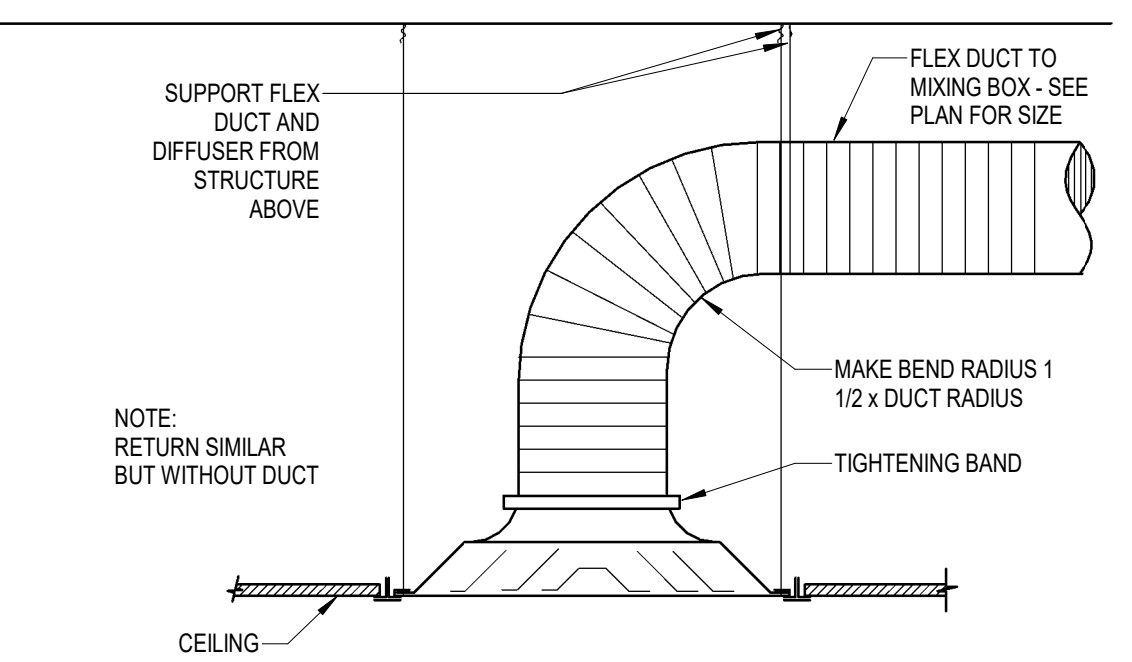
1 CABLE BRACING FOR RECTANGULAR DUCTS

N.T.S.



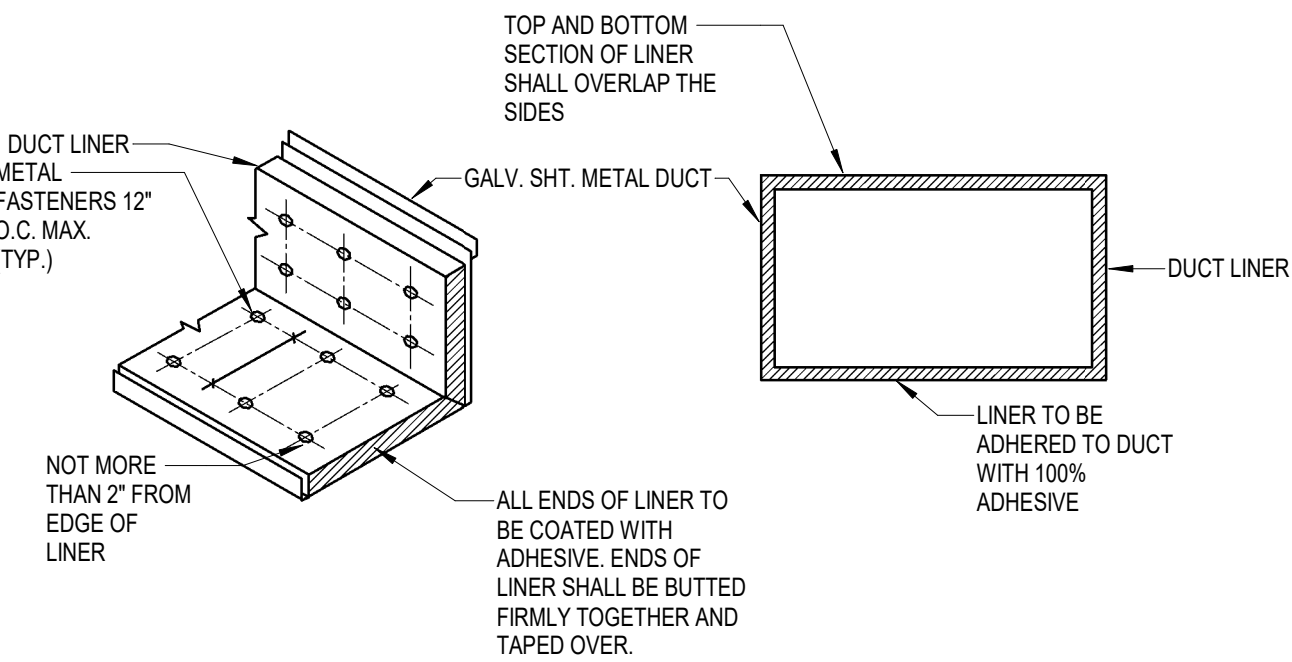
2 CONSTRUCTION OF 45-90 DEGREE TEE FITTING AND MOUNTING

N.T.S.



3 DIFFUSER CONNECTION DETAIL

N.T.S.



4 DUCT LINER DETAIL

N.T.S.

Intermountain Health Care  
TOSH  
Central Processing Remodel

5848 South 300 East  
Murray, Utah 84107

NJRA Project # 19234.00  
Construction Documents Aug 18, 2020  
1 Addendum # 2 09-16-20

MECHANICAL  
DETAILS/SCHEDULE

MH501