



Addendum #2

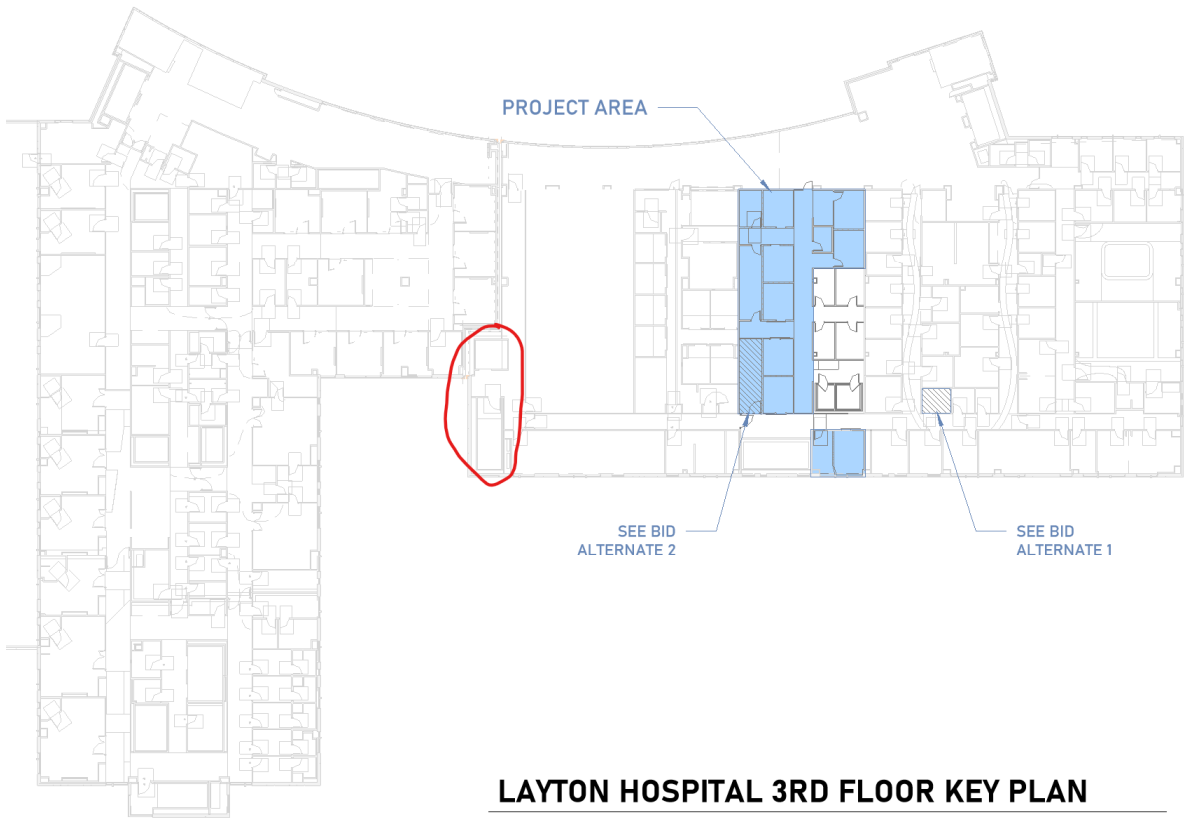
May 29, 2026

project: Intermountain Health Layton Hospital
PCH Exam Expansion
201 West Layton Parkway
Layton, Utah 84041

The following revisions, clarifications, and/or additions shall become part of the construction documents for the above-referenced project. In the case of any conflict between the drawings, specifications and this addendum, this addendum shall govern. This addendum becomes part of the bid documents and the cost to install all items covered herein shall be included in the Contractor's bid proposal.

QUESTION / ANSWER:

- On sheet EP201, the cable tray at the bottom is noted as existing and it a lighter color. Is the 12"x4" cable tray that branches off of the existing tray also existing? The Keynote refers only to the 3-tier J-hook pathway. But this branch of the cable tray is a darker color possibly referring to it as new
 - Clarified cable tray to reflect existing in project area, see updated EP201 and electrical narrative.
- REF 2/A501. Please confirm that no insulation will be required above ceiling.
 - That wall type is only used in 2 areas of this project, at the staff work area to hallway and the restroom. Due to the fact we have a hard lid ceiling in the restroom and that nobody but staff will be traversing the hallway we are okay removing the insulation shown. See updated detail 2/A501 that removes the insulation.
- Please provide how the work area will be accessible for work to be completed? Stairs or elevator? If elevator will it be dedicated for construction use only
 - Per the on-site walk there is a 5,000 lb back of house elevator that can be used. It will not be dedicated for construction use, staff can also use this elevator. There is an adjacent stairway with direct access to the back corridor that will be the primary access path to the project area.



If any further clarification is needed please contact Curt Hawkes or I.

Brent Murray, AIA
801.209.0892
brent@vero-arch.com



ADDENDUM NO. 02

To:	Brent Murray	From:	Josh Barsdorf
Company:	Vero Architecture		
Date:	May 29, 2026		
Project:	IH Layton Hospital PCH Exam Expansion		

The following changes as described below are issued as an addendum to the construction documents prior to bid submittal due date. The contractors are responsible to ensure all addendum additions and/or changes are included in their bid.

Alternate equipment manufacturers stand approved in name only. Inclusion here in no way relieves the supplier from complying with all other engineering, weight, spatial, and quality requirements of equipment indicated in the contract documents. Contractors using products from alternate manufacturers shall refer to Specifications for detailed contractor responsibilities related to the use of alternate brands not used as the Basis of Design

If selected, the prior approved lighting products will be reviewed again during the submittal review process. If it's subsequently determined that the prior approved products are not equivalent to the basis of design light fixtures, the products will be rejected, and the Contractor shall be required to provide a product equivalent to the basis of design light fixture. All lighting products must comply with a maximum of 30-day lead time. [Revise as needed.](#)

Drawings

Sheet EP201

1. Clarified cable tray to reflect as existing in project area.

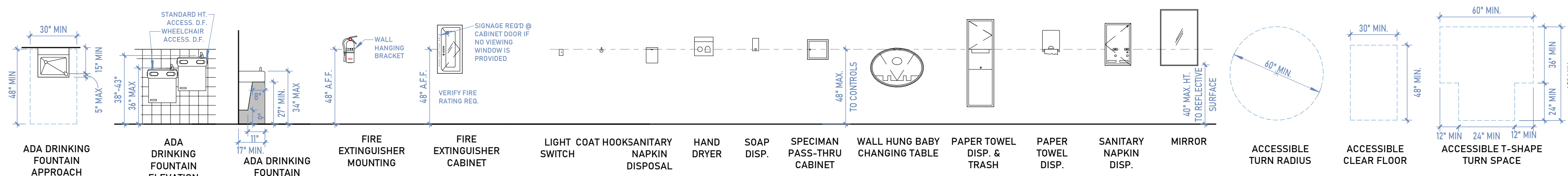
Attachments

<< EP201 – LEVEL 3 ELECTRICAL RACEWAY CEILING PLAN >>

End of Addendum

ISSUE DATE:	04/30/2026
PROJECT NO:	25010
PROJECT PHASE:	
DRAWN BY:	DF
CHECKED BY:	BM

#	DATE	DESCRIPTION
1	2026.04.13	DHHS COMMENTS
2	2026.05.15	ADDENDUM 1
3	2026.05.29	ADDENDUM 2

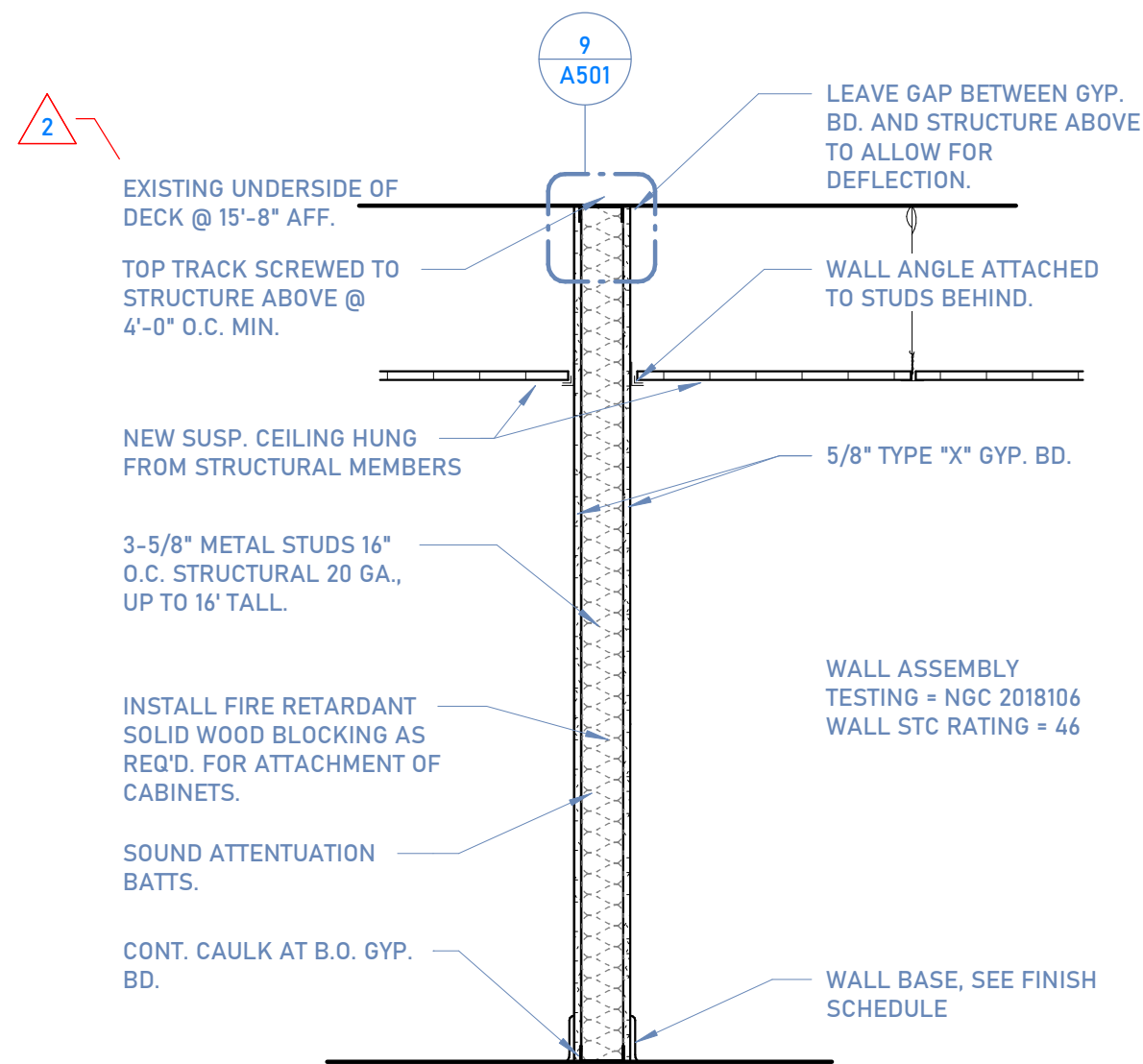
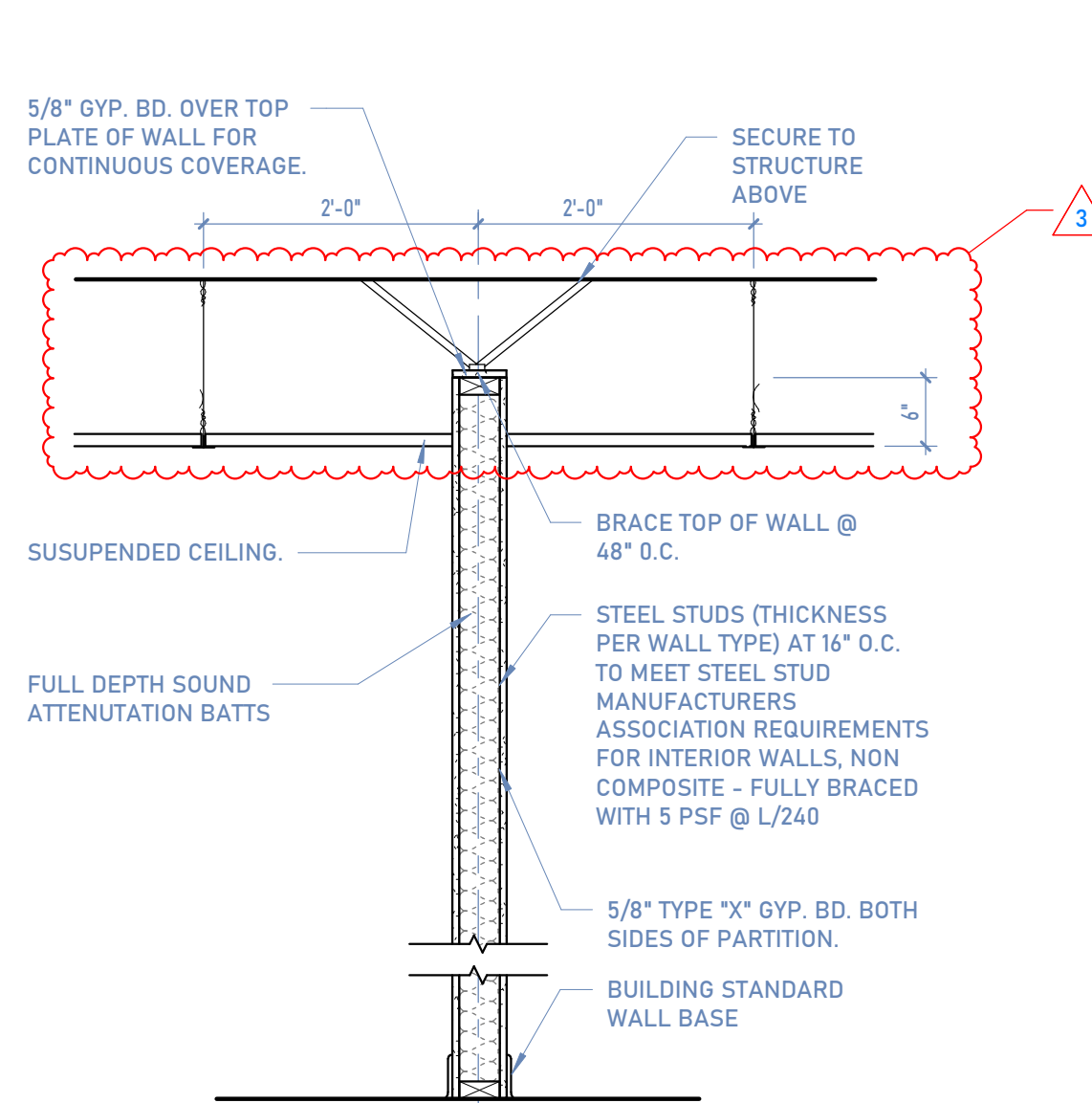


1 STANDARD MOUNTING HEIGHTS

1/ A501 | SCALE: 1/4" = 1'-0"

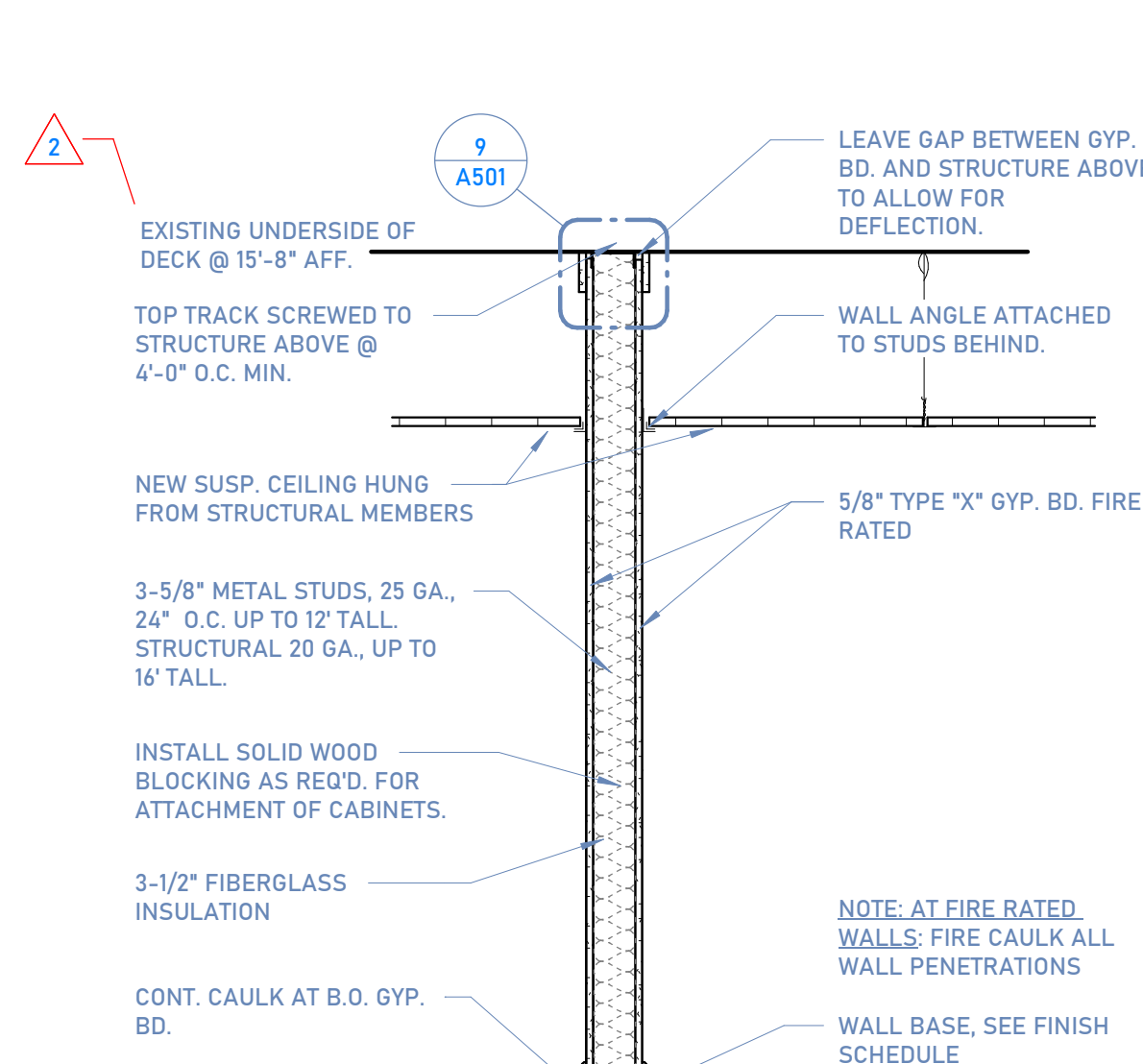
2 PARTITION - PLENUM HEIGHT

2/ A501 | SCALE: 3/4" = 1'-0"



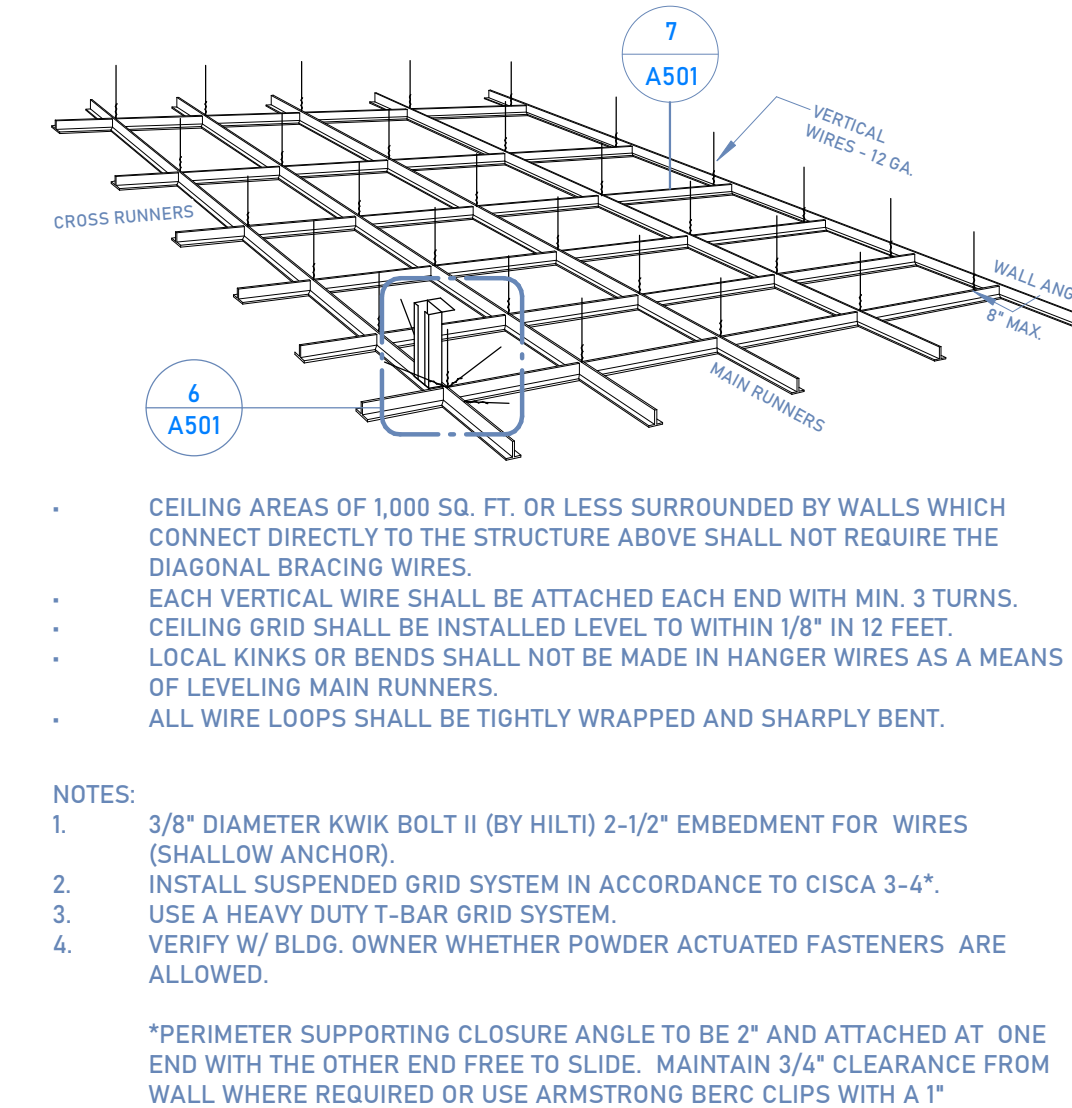
3 PARTITION - DEMISING WALL

3/ A501 | SCALE: 3/4" = 1'-0"



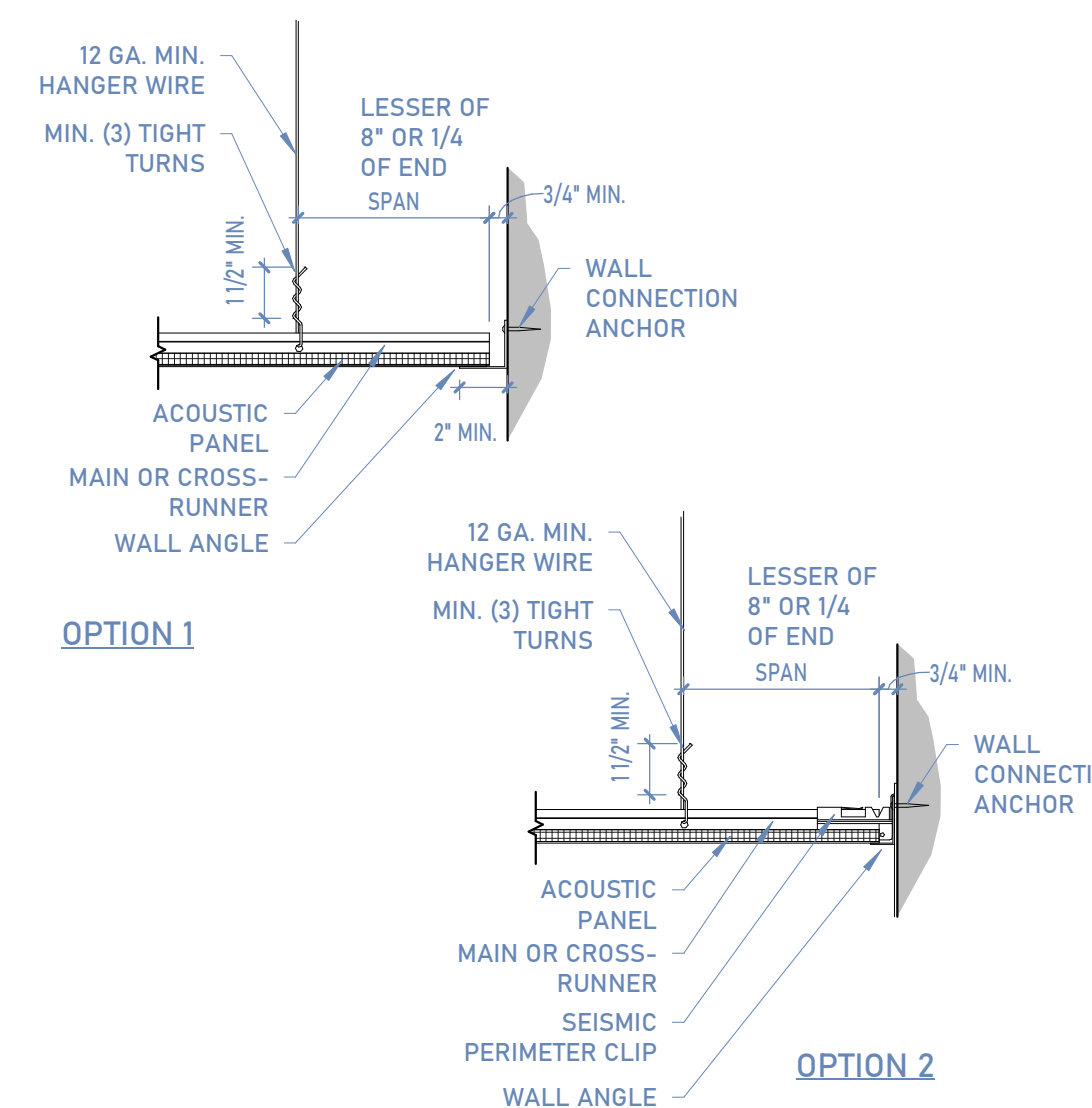
4 PARTITION - UL U419 1-HOUR

4/ A501 | SCALE: 3/4" = 1'-0"



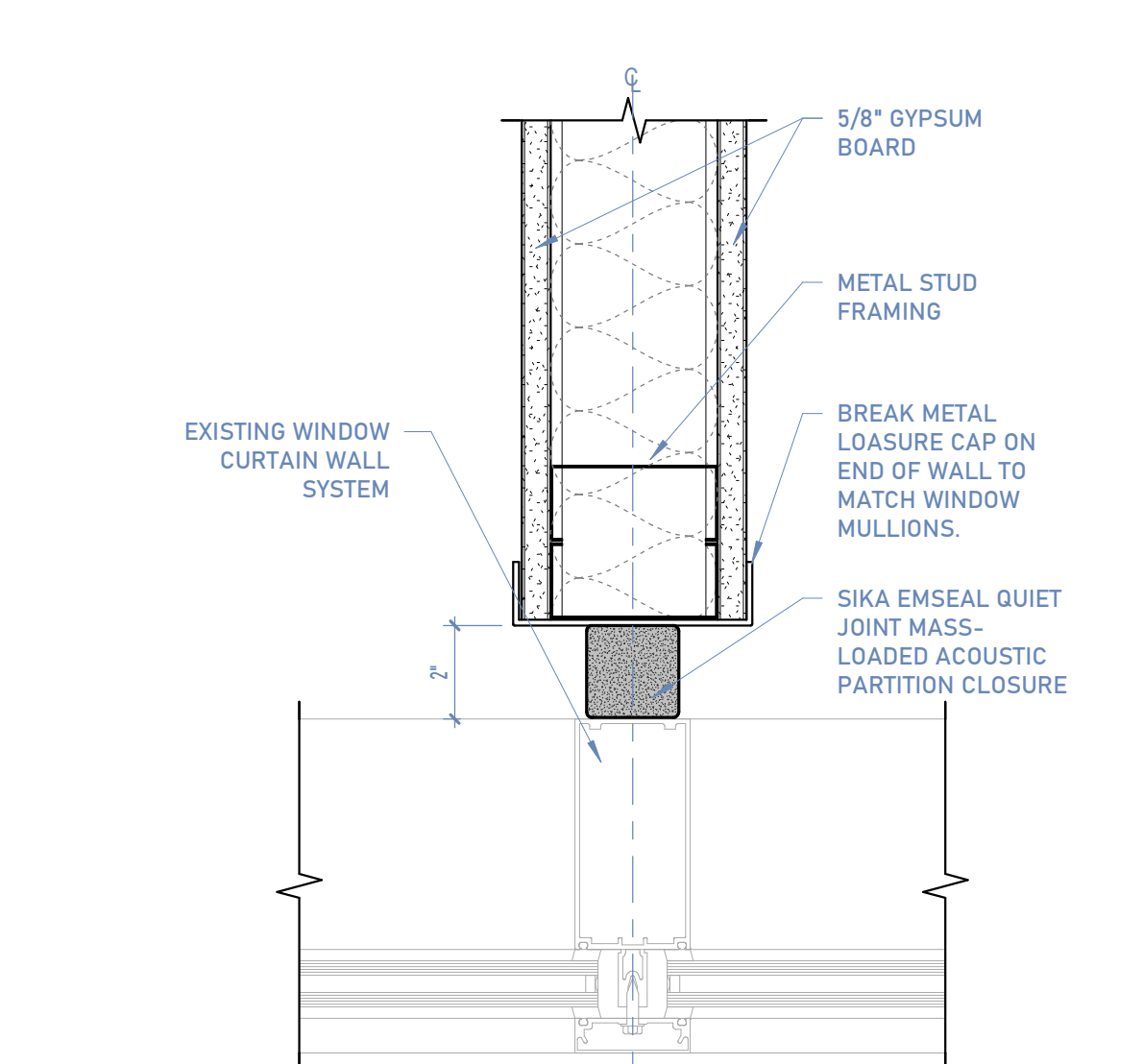
5 SUSPENDED CEILING DETAIL

5/ A501 | SCALE: 1" = 1'-0"



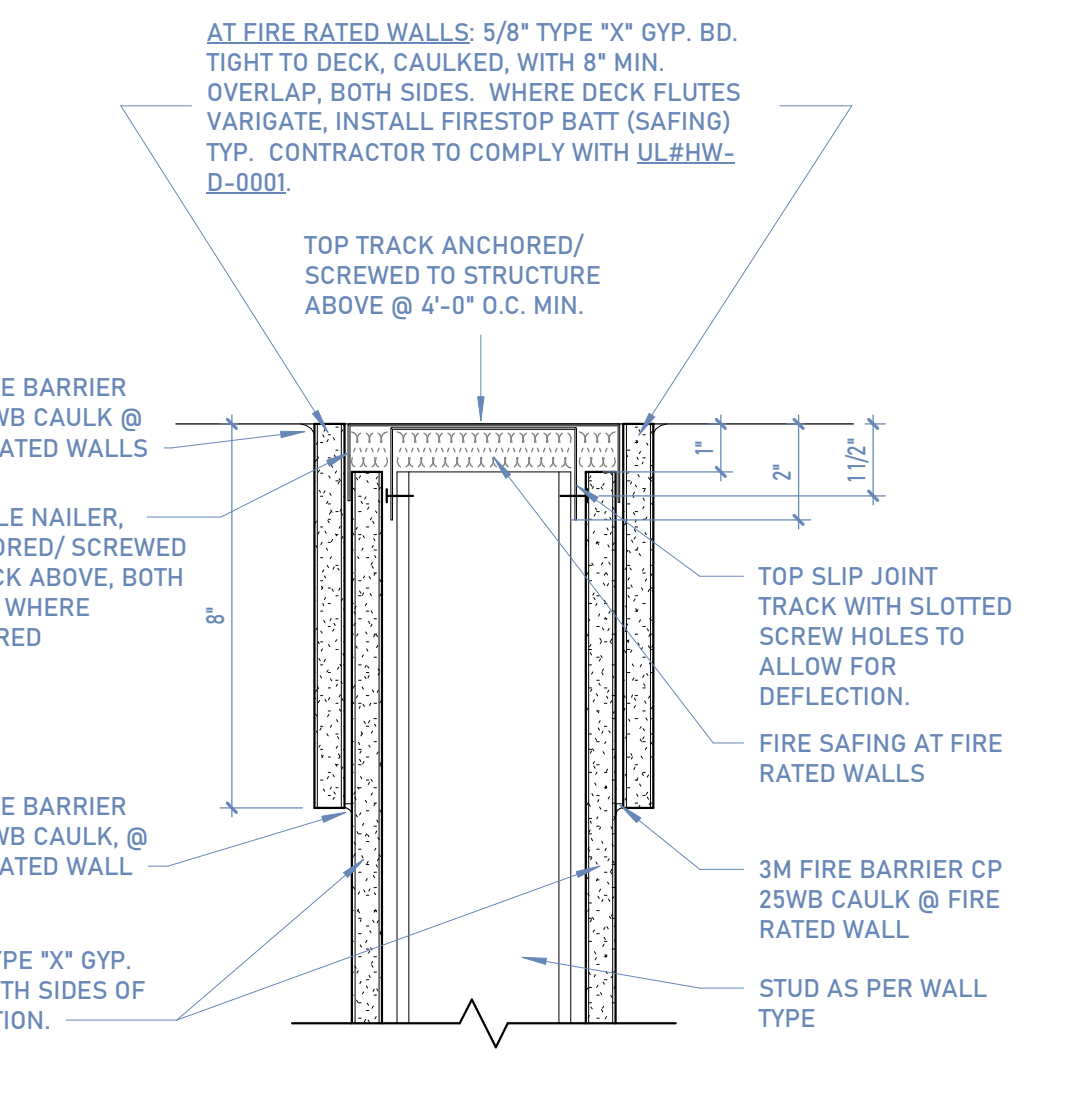
7 CEILING SEISMIC EDGE DETAIL

7/ A501 | SCALE: 1/2" = 1'-0"



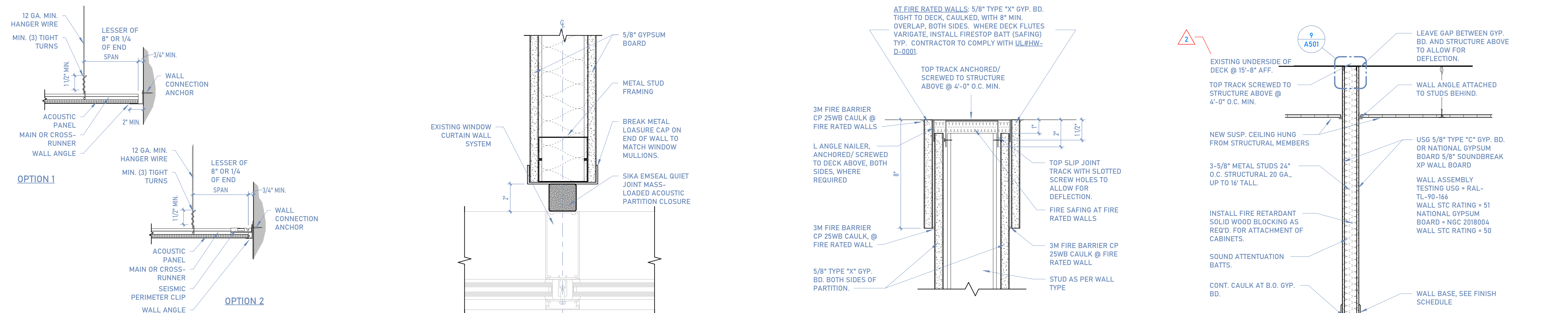
8 WALL CAP AT MULLION

8/ A501 | SCALE: 3" = 1'-0"



9 SLIP JOINT

9/ A501 | SCALE: 3" = 1'-0"



10 PARTITION - STC RATED WALL

10/ A501 | SCALE: 3/4" = 1'-0"



1480 ORCHARD DRIVE
BOUNTIFUL, UT 84010
SUITE #105
VERO-ARCH.COM

SPECTRUM
ENGINEERS
324 S. State St., Suite 400
Salt Lake City, UT 84111
801-478-7077
801-328-5151
fax: 801-328-5155
www.spectrum-engineers.com

CONSULTANTS

INTERMOUNTAIN HEALTH
**LAYTON HOSPITAL PCH EXAM
EXPANSION**
201 WEST LAYTON PARKWAY
LAYTON, UT 84041

BID SET

PROJECT STATUS



ARCHITECT STAMP

ISSUE DATE: 04/30/2026
PROJECT NO: 25010
PROJECT PHASE:
DRAWN BY: JRB
CHECKED BY: Checker

#	DATE	DESCRIPTION
2	05/29/26	Addendum 2

**LEVEL 3
ELECTRICAL
RACEWAY CEILING
PLAN**
SHEET NAME

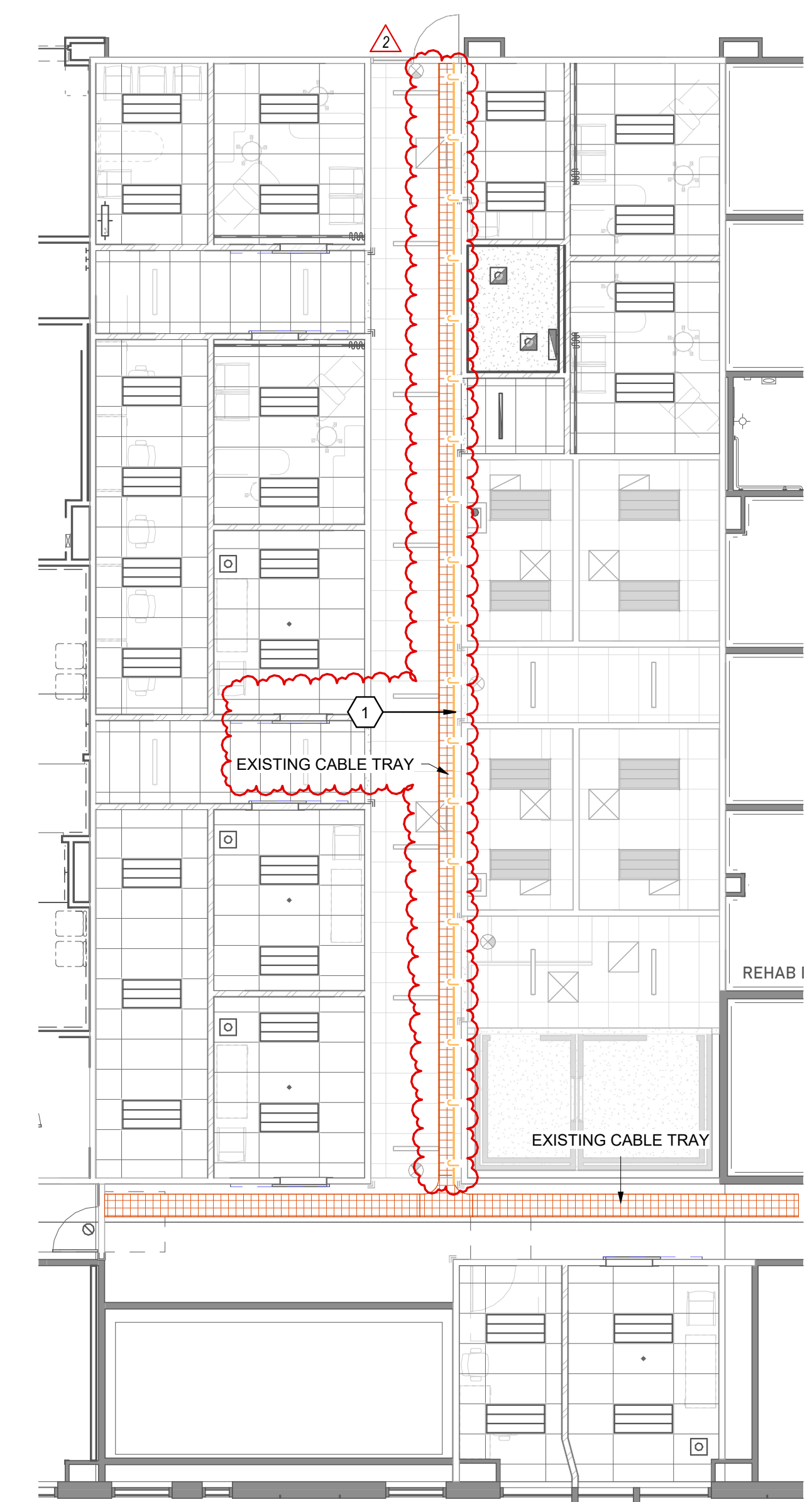
EP201

SHEET NUMBER

GENERAL SHEET NOTES

SHEET KEYNOTES

1 CONTRACTOR TO PROVIDE AND INSTALL 3-TIER 4" J-HOOK PATHWAYS FOR ANCILLARY LOW VOLTAGE SYSTEMS.



1 LEVEL 3 ELECTRICAL RACEWAY PLAN
SCALE: 1/8" = 1'-0"

5/29/2026 7:59:43 AM