

ASSA ABLOY

ASSA ABLOY ENTRANCE SYSTEMS
1900 AIRPORT ROAD
MONROE, NC 28110
PHONE: 1-866-237-2687
SPECDESK.NA.ENTRANCE@ASSAABLOY.COM

ASSA ABLOY VERSAMAX ICU

OVERHEAD CONCEALED FULL BREAKOUT TRACKLESS
UL 1784 SMOKE CERTIFIED NARROW STILE SINGLE SLIDE
DOOR SYSTEM

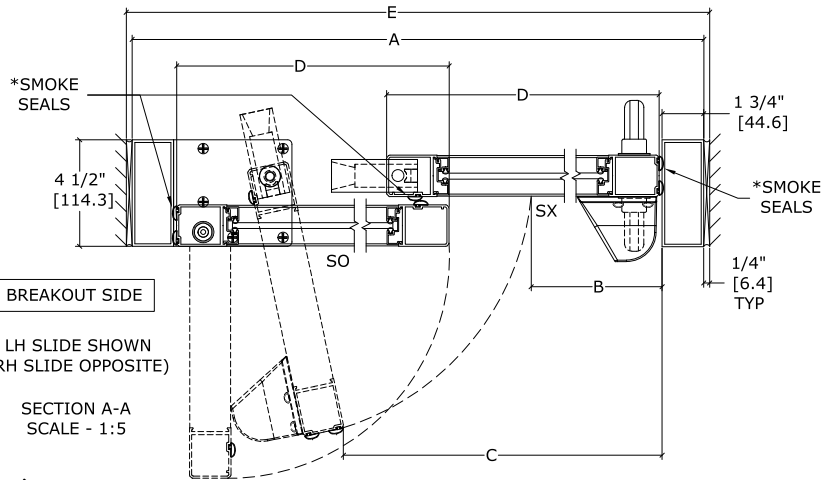
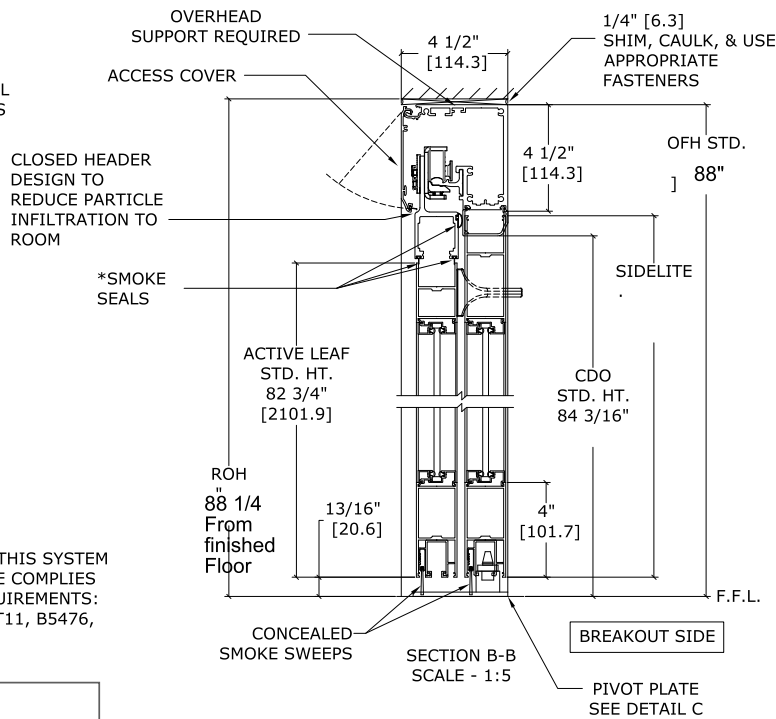
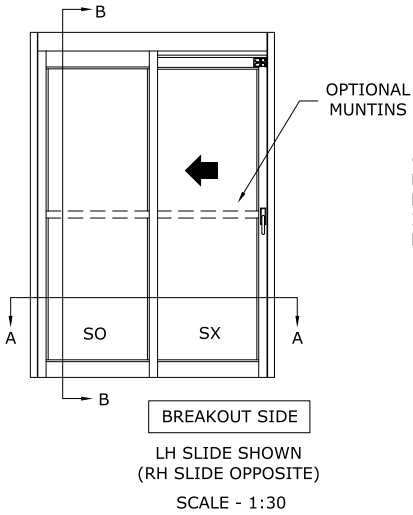
**U.S. PATENT
8,096,342 B2**

DIMENSIONS FOR 1/4" [6.4] GLASS

MODEL NO.	OVERALL FRAME WIDTH (A)	CLEAR DOOR OPENING WIDTH (B)	BREAKOUT OPENING (C)	ACTIVE & SIDELITE LEAF WIDTH (D)	ROUGH OPENING WIDTH (E)
96"	96"	41 1/2"	83 1/4"		96 1/2"

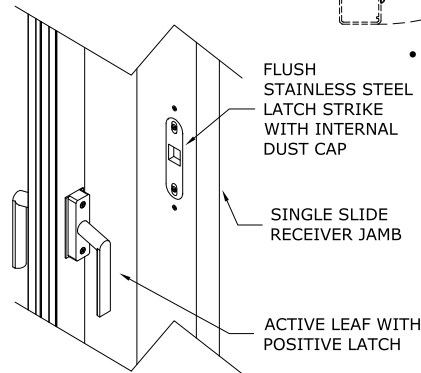
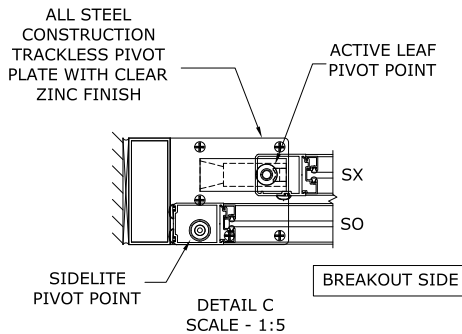
KEY:	(A/2)-6 7/16" (A/2)-[163.5]	A-12 11/16" A-[322.3]	(A/2)-9/16" (A/2)-[14.7]	A+1/2" A+[12.7]
------	--------------------------------	--------------------------	-----------------------------	--------------------

- ① - MEETS OR EXCEEDS DIMENSIONAL REQUIREMENTS OF NFPA SECTION 18.2.3.6(1) CODE
- ② - MEETS OR EXCEEDS DIMENSIONAL REQUIREMENTS OF CBC 2007 1008.1.1 CODE



* SEALS: FACTORY APPLIED SEALS USED ON THIS SYSTEM TO SLOW OR RESTRICT PASSAGE OF SMOKE COMPLIES TO ONE OR MORE OF THE FOLLOWING REQUIREMENTS: UL1784, ANSI/NFPA105 2007, UBC7-2, PART11, B5476, UL10B, UL10C, UBC7-2 PART 1 & B5476.

Overall Frame Width 96
Mounting Height 88
Clear Door Opening Width 41.55
Clear Door Opening Height 82.4375
Handing Left Hand Single
Guide System Trackless Bottom Guide
Finish Clear Anodized - Class 1
Door Stile Narrow Stile
Glass Stop Above Muntin 1/4" Glass Stop Above Muntin
Glass Stop Below Muntin 1/4" Glass Stop Below Muntin
Bottom Rail 10" Bottom Rail
Muntins 1-3/4" Muntin
Muntin Bar Centerline 41.25
Frame Type Jambs
Frame Depth 1-3/4" Jamb Tubes
Catch Nurse Assist - Magnetic Catch
Handle / Latch Options Positive Latch Assembly

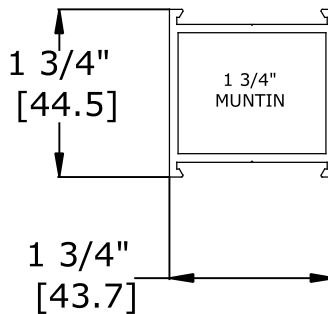
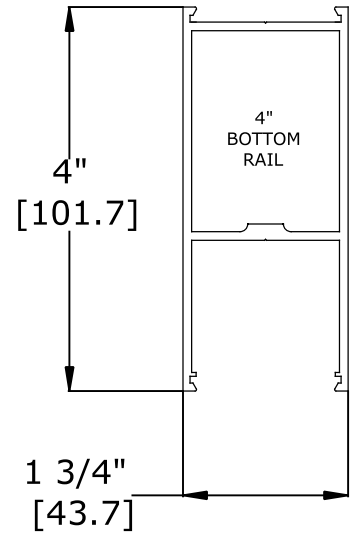


- DOORS WILL ONLY BREAK OUT WHEN IN THE FULLY OPEN POSITION.

REFER TO RELEVANT [LOCAL, STATE, NATIONAL, OR AHJ] BUILDING CODE FOR MIN DOOR HEIGHT & MIN/MAX WIDTH ALLOWABLE FOR EGRESS REQUIREMENT IN CONJUNCTION WITH TABLE.

DWG NO. 1016198	DRN BY DBN	DATE 10/16/18	CHK BY CLW	DATE 10/16/18	REV. 3.0	DATE 10/16/18
-----------------	------------	---------------	------------	---------------	----------	---------------

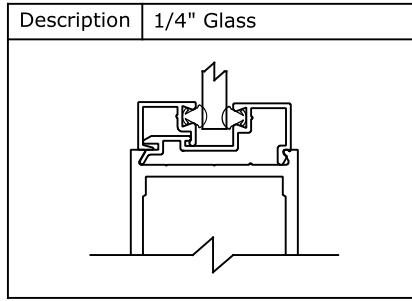
ASSA ABLOY



NOTES:

- MEDIUM AND WIDE STILE PACKAGES COME STANDARD WITH 7" BOTTOM RAIL.
- 1 3/4" MUNTIN STANDARD WHEN MUNTIN SELECTED.

DWG NO. 1016566											
DRN BY	DBN	DATE	02/22/17	CHK BY	CLW	DATE	03/03/17	REV.	2.0	DATE	05/24/17

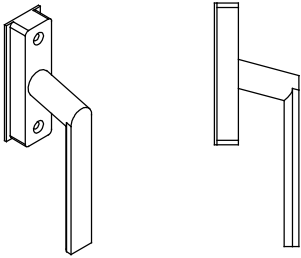


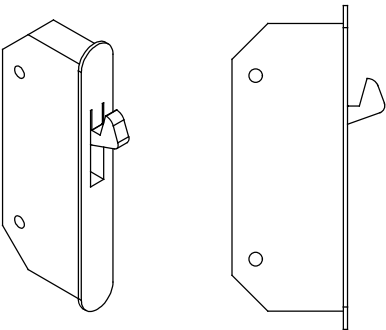
NOTES:

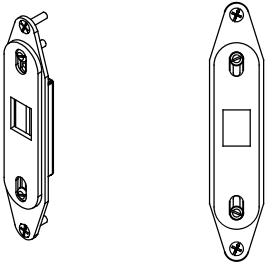
- 1/4" SLOPED GLASS STANDARD WITH CLEAN ROOM PACKAGE.

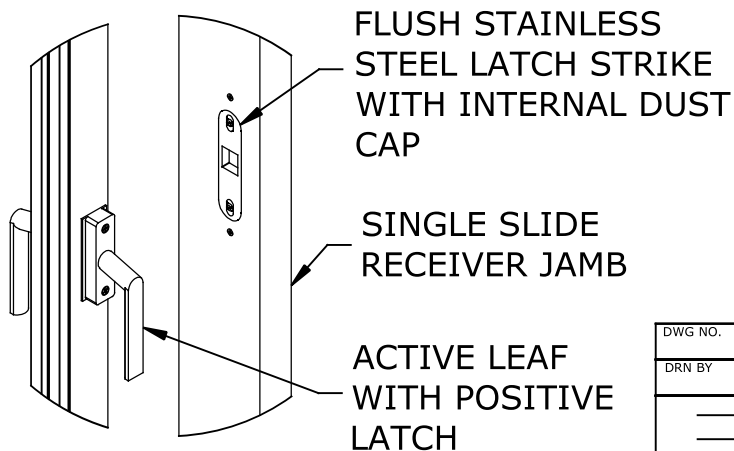
SCALE 1:1

DWG NO. 1016565											
DRN BY	DBN	DATE	02/22/17	CHK BY	CLW	DATE	03/03/17	REV.	2.0	DATE	05/24/17
ASSA ABLOY											

Description	Positive Latch Handle Set	
Remarks	<ul style="list-style-type: none"> • Available in Clear and Dark Bronze finishes. • Available with Anti-Microbial Coating 	

Description	Positive Latch Lock	
Remarks		

Description	ICU Flush Mounted Keeper Kit	
Remarks	<ul style="list-style-type: none"> • Stainless steel finish 	



DWG NO. 1016553											
DRN BY	DBN	DATE	02/22/17	CHK BY	CLW	DATE	03/03/17	REV.	2.0	DATE	05/24/17