

ADDENDUM

Date Issued:	November 11, 2025
Project:	Intermountain Health Riverton Hospital L&D Upgrade 3741 W. 12600 S. Riverton, UT 84065
Addendum Number:	1

The Contractors submitting proposals on the above-captioned project shall be governed by the following addendum, changes and explanations to the drawings and specifications and shall submit their bids in accordance therewith.

Item Number	General Items Description
1	This addendum includes clarifications emailed from Sarah Stroud on Nov. 7 th and changes to the construction documents to reflect those clarifications.
2	Phasing. Project to include 3 phases, each including 3 patient rooms.
3	Toilet Room Wall Niches. Two niches are needed in each toilet room. Locations are shown on sheet A401 with product information.
4	Trim should not be used with wainscot panel wall protection. Seal top edge with caulk.
5	Ceiling tile product change.
Sheet Number	Drawings
Architectural Drawings	
A129	Phase Plan – Level 3
A401	Enlarged Views – Floor Plan & Elevations
A402	Enlarged Views – Finish Plan & Schedule

Attachments:

A129, A401, and A402
Clarifications email from Sarah Stroud on Nov. 7th

11/12/2025 10:20:44 AM

1 Floor Plan Level 2
SCALE: 1/4" = 1'-0"



KEYED NOTES

LEGEND - PHASE

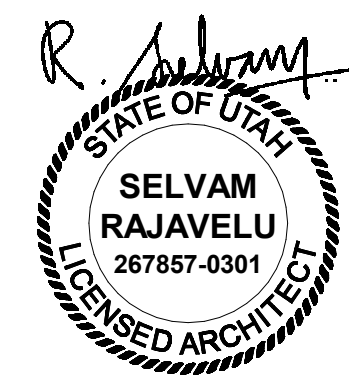
- PHASE 1
- PHASE 2
- PHASE 3

GENERAL NOTES

- A. SEE SHEET G003 AND G005 FOR SYMBOLS, GENERAL NOTES AND LEGEND.
- B. SEE SHEET A505A FOR CABINET LEGEND.
- E. SEE SHEET A402 FOR FINISH SCHEDULE AND GENERAL NOTES.



NJRA Architects, Inc.
5223 S. Ascension Way, Suite 350
Murray, Utah 84123
801.364.9259
www.njraarchitects.com



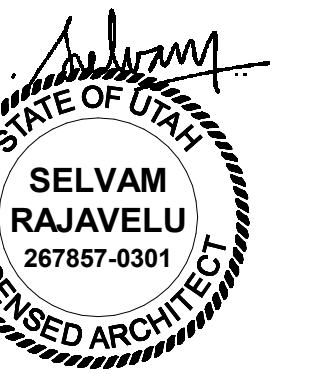
Intermountain Health
Riverton Hospital
L & D Upgrade

3741 W 12600 S
Riverton, UT 84065

NJRA Project # 25238.00
Construction Documents Oct. 28, 2025
Addendum 1 Nov 11, 2025

Phase Plan -
Level 3

A129



02.02 SKYTRON LIGHT CONTROLS. EXISTING TO BE REMOVED AND REINSTALLED.

02.07 EXISTING MEDGAS OUTLETS TO REMAIN. PROTECT DURING CONSTRUCTION.

02.09 WINDOW, EXISTING TO REMAIN. PROTECT WINDOW FROM DAMAGE DURING CONSTRUCTION.

06.01 NEW CABINET. SEE CABINET LEGEND ON SHEET 1/A505A, AND INTERIOR ELEVATIONS, FOR CABINET TYPES SUCH AS BASE CABINETS, WALL CABINETS, TALL CABINETS, ETC.

06.03 NEW MOBILE CABINET. SEE CABINERY LEGEND ON SHEET A505A.

06.05 CONTRACTOR TO FIELD VERIFY CABINET DIMENSIONS FOR EACH LDR ROOM AND MAKE ANY NEEDED ADJUSTMENTS FOR EXISTING MED GAS LOCATIONS BEFORE ORDERING CABINETS.

06.17 SOLID SURFACE INTEGRAL SKIN ON SOLID SURFACE COUNTERTOP. BASIS OF DESIGN: CORIAN VALLEYVIEW 804P. GLACIER WHITE.

08.01 DOOR AND DOOR FRAME, EXISTING TO REMAIN PROTECT DURING CONSTRUCTION.

09.01 PLASTIC LAMINATE FINISH TO EXTEND TO FASCIA PANEL/SOFFIT ABOVE.

09.07 FLOOR COVERING. SEE FINISH FLOOR PLANS FOR FLOOR COVERING INDICATED WITH A FINISH FLAG (AS FI, F2, F3, ETC.). SEE FINISH SCHEDULE OF SHEET A505A FOR MATERIAL, SIZE, COLOR, ETC. FOR EACH FLOOR FINISH FLAG.

09.08 WALL BASE. SEE FINISH FLOOR PLANS FOR WALL BASE TYPE INDICATED WITH A WALL BASE FLAG (AS B1, B2, B3, ETC.). SEE FINISH SCHEDULE ON SHEET A402 FOR MATERIAL, SIZE, COLOR, ETC. FOR EACH WALL BASE FLAG.

09.09 WALL FINISH. SEE FINISH FLOOR PLANS FOR WALL FINISH INDICATED WITH A WALL FINISH TAG (AS W1, W2, W3, ETC.). SEE FINISH SCHEDULE ON SHEET A505A FOR MATERIAL, SIZE, COLOR, ETC. FOR EACH WALL FINISH TAG.

09.18 WALL PROTECTION. SEE FINISH FLOOR PLAN FOR WAINSCOT, CORNER GUARDS, ETC. INDICATED WITH A TAG AS W1, WP2, ETC. SEE FINISH SCHEDULE FOR MATERIAL, TYPE, COLOR, ETC.

10.01 REMOVE AND RE-INSTALL GRAB BARS, TYPICAL, AS REQUIRED FOR WATER CLOSET, SHOWER, ETC. SEE RELEVANT DETAILS 1/G0033 AND 1/G004 FOR MOUNTING HEIGHT, LOCATION, ETC.

10.03 REMOVE AND RE-INSTALL TOWEL DISPENSER, CONTRACTOR SHALL PROVIDE BACKING IN WALL AS REQUIRED. SEE RELEVANT DETAILS 1/G0033 AND 1/G004 FOR MOUNTING HEIGHT, LOCATION, ETC.

10.04 REMOVE AND RE-INSTALL SOAP DISPENSER, CONTRACTOR SHALL PROVIDE BACKING FOR ALL DOWNER JUDICIAL DISPENSER ITEMS. SEE RELEVANT DETAILS 1/G0033 AND 1/G004 FOR MOUNTING HEIGHT, LOCATION, ETC.

10.06 REMOVE AND RE-INSTALL PAPER TOWEL DISPENSER, CONTRACTOR SHALL PROVIDE BACKING IN WALL AS REQUIRED. SEE RELEVANT DETAILS 1/G0033 AND 1/G004 FOR MOUNTING HEIGHT, LOCATION, ETC.

10.16 WALL NICHES. CONTRACTOR TO MODIFY WALL FRAMING AS REQUIRED, BASES OF DESIGN FURNISH, FINISH SHOWER NICHES. SOLID SURFACE SHOWER NICHES. FINISH TILE, NICHES. SEE FINISH SCHEDULE FOR MATERIAL, TYPE, COLOR, ETC.

11.02 REMOVE AND RE-INSTALL EXISTING EQUIPMENT BAR.

12.01 FURNITURE, NOT IN CONTRACT, OWNER FURNISHED ORIENTED FINISHED.

22.02 MOTION SENSOR FAUCET. SEE PLUMBING AND ELECTRICAL DRAWINGS.

22.03 MEDGAS OUTLET. SEE PLUMBING AND ELECTRICAL DRAWINGS.

26.01 NURSE CALL. SEE ELECTRICAL DRAWINGS FOR LOCATION AND ALL REQUIREMENTS. RE-USE EXISTING UNLESS NOTED OTHERWISE.

26.02 NURSE CALL, EXISTING TO REMAIN.

26.04 POWER AND DATA OUTLETS. SEE ELECTRICAL DRAWINGS FOR LOCATION AND QUANTITY.

26.05 TV OUTLET. SEE ELECTRICAL DRAWINGS.

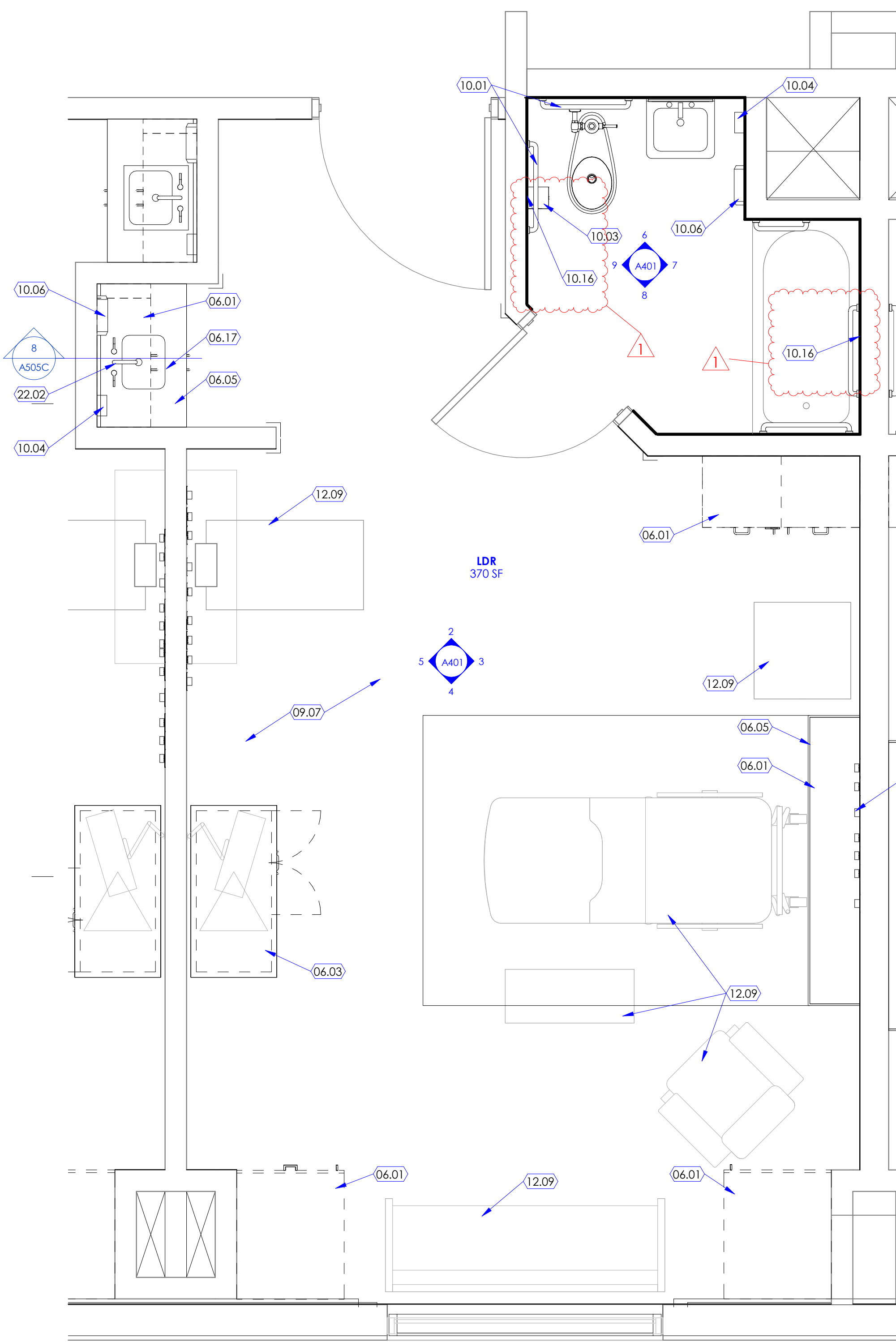
A. SEE SHEET G003 AND G005 FOR SYMBOLS, GENERAL NOTES AND LEGEND.
B. SEE SHEET A505A FOR CABINET LEGEND.
E. SEE SHEET A402 FOR FINISH SCHEDULE AND GENERAL NOTES.

Intermountain Health
Riverton Hospital
L & D Upgrade

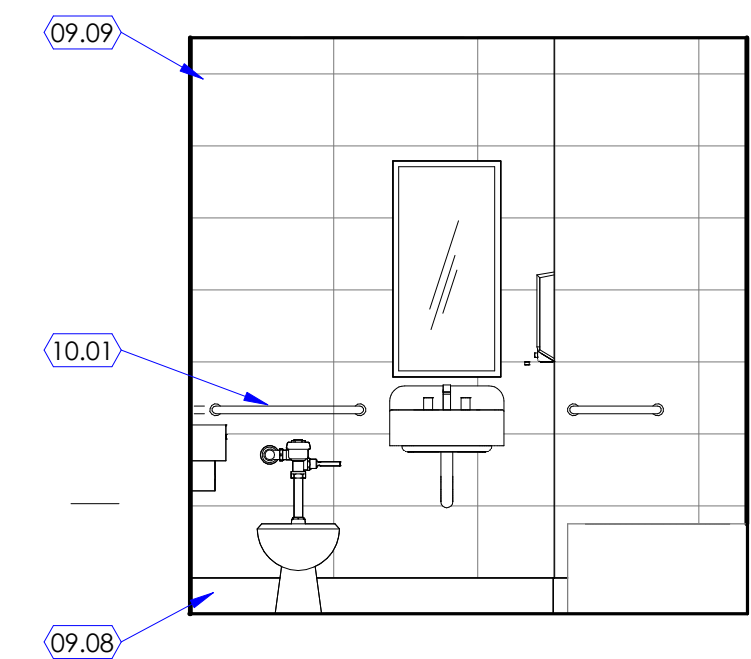
UJA Project #	25238.00
Construction Documents	Oct. 28, 2025
Addendum 1	Nov 11, 2025

Enlarged Views- Floor Plan & Elevations

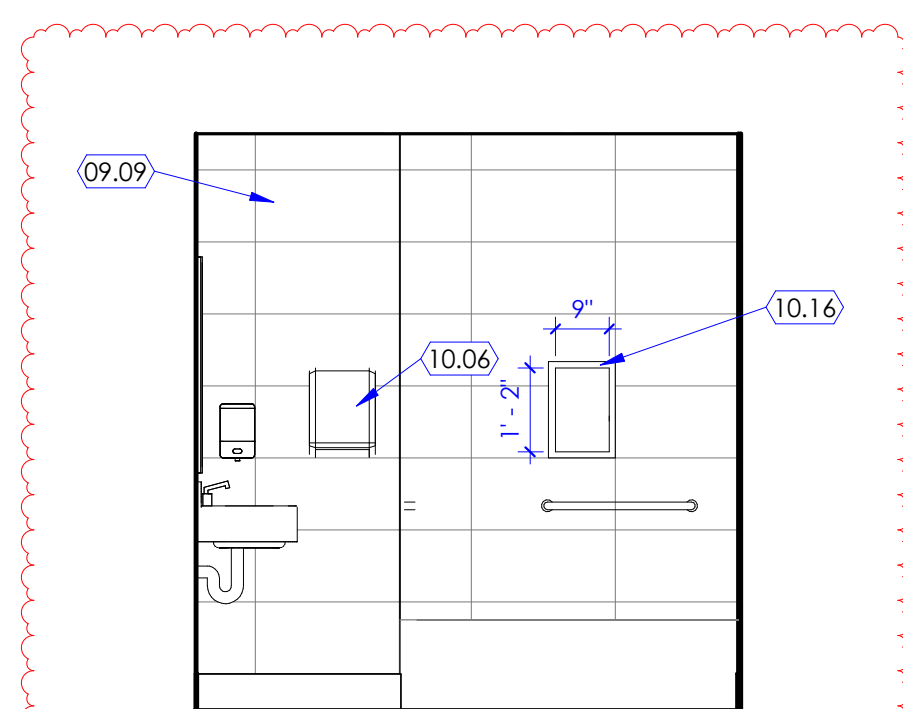
A401



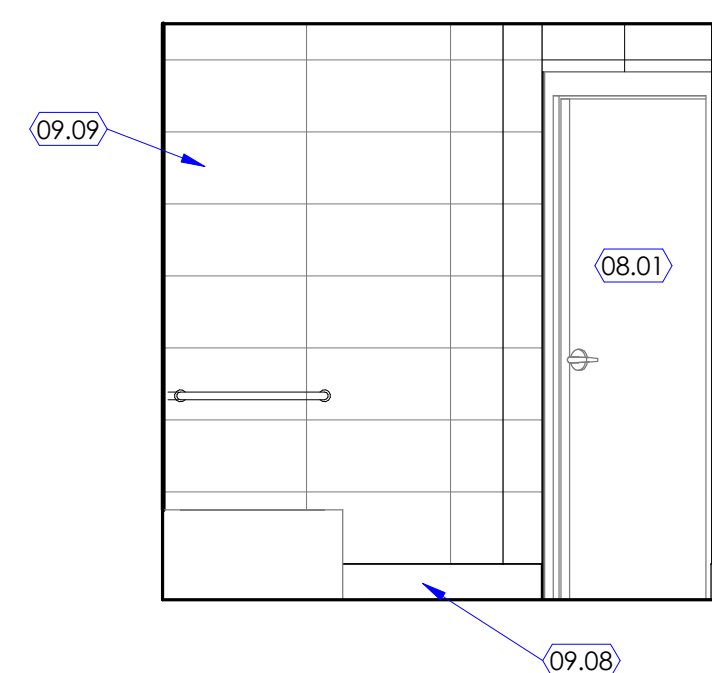
1 L&R Enlarged Floor Plan
SCALE: 1/2" = 1'-0"



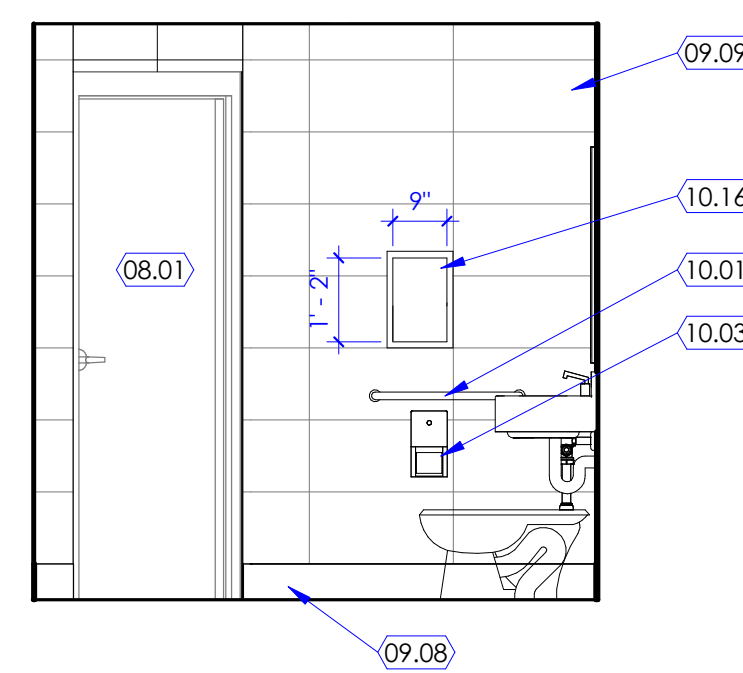
6 Toilet



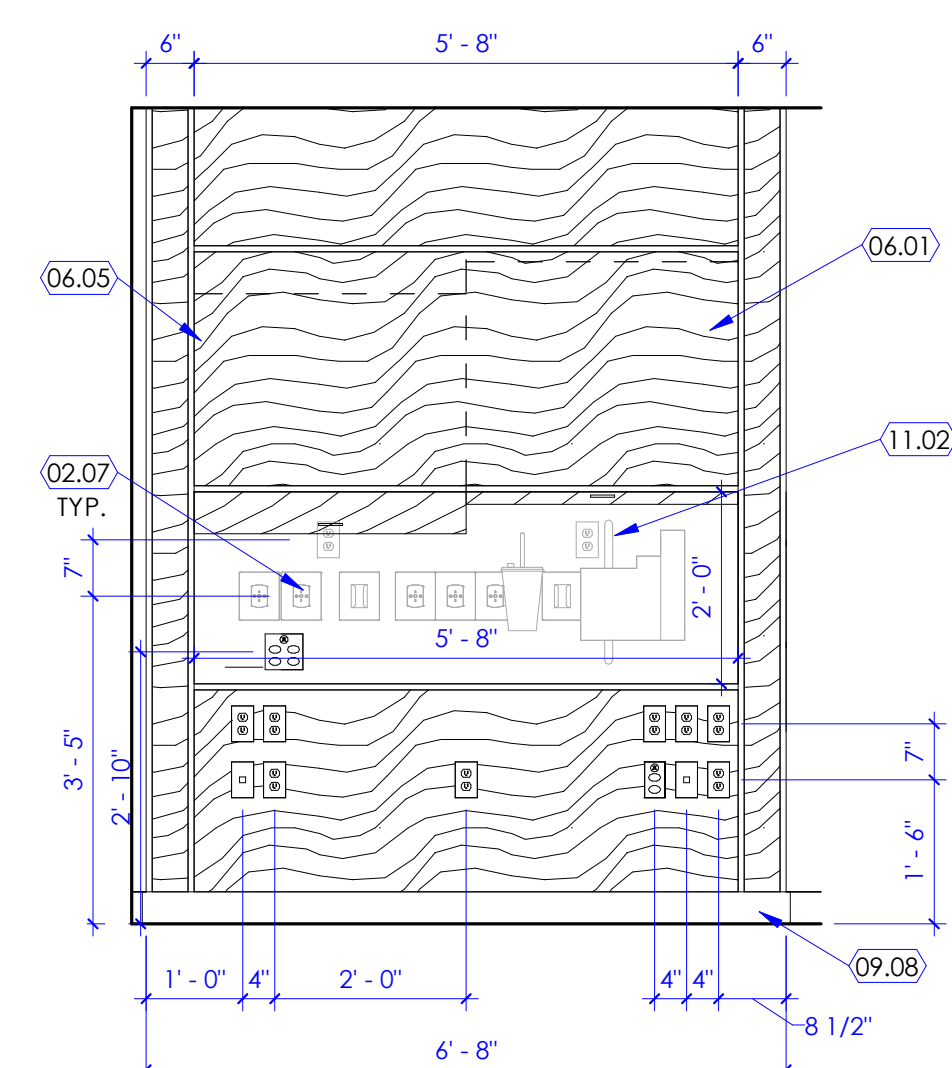
7 Toilet



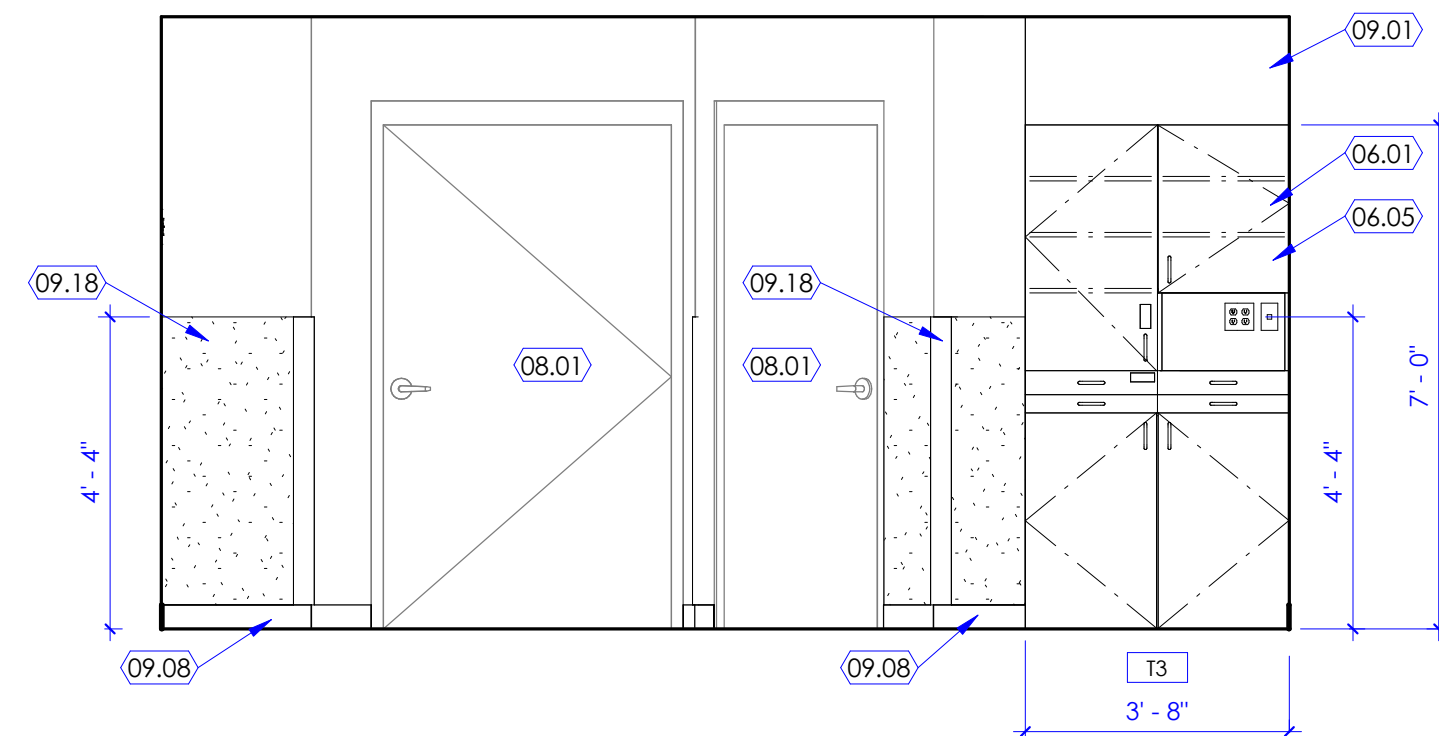
8 Toilet



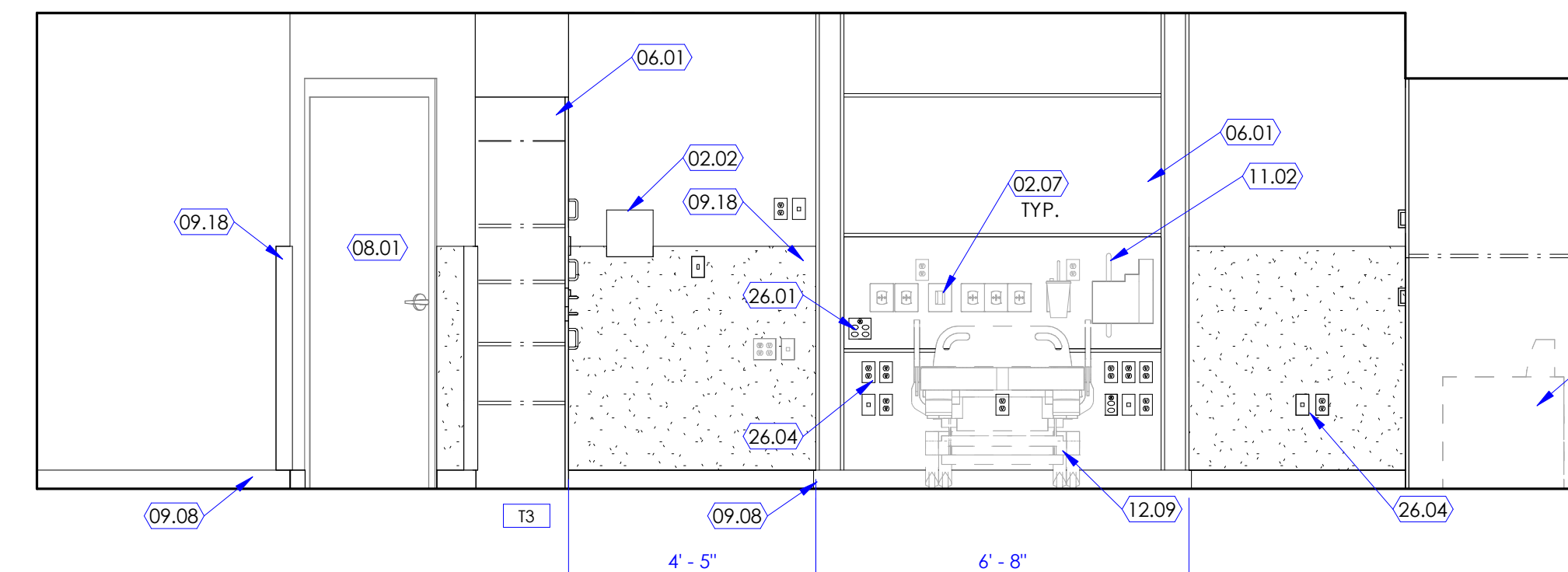
9 Toilet



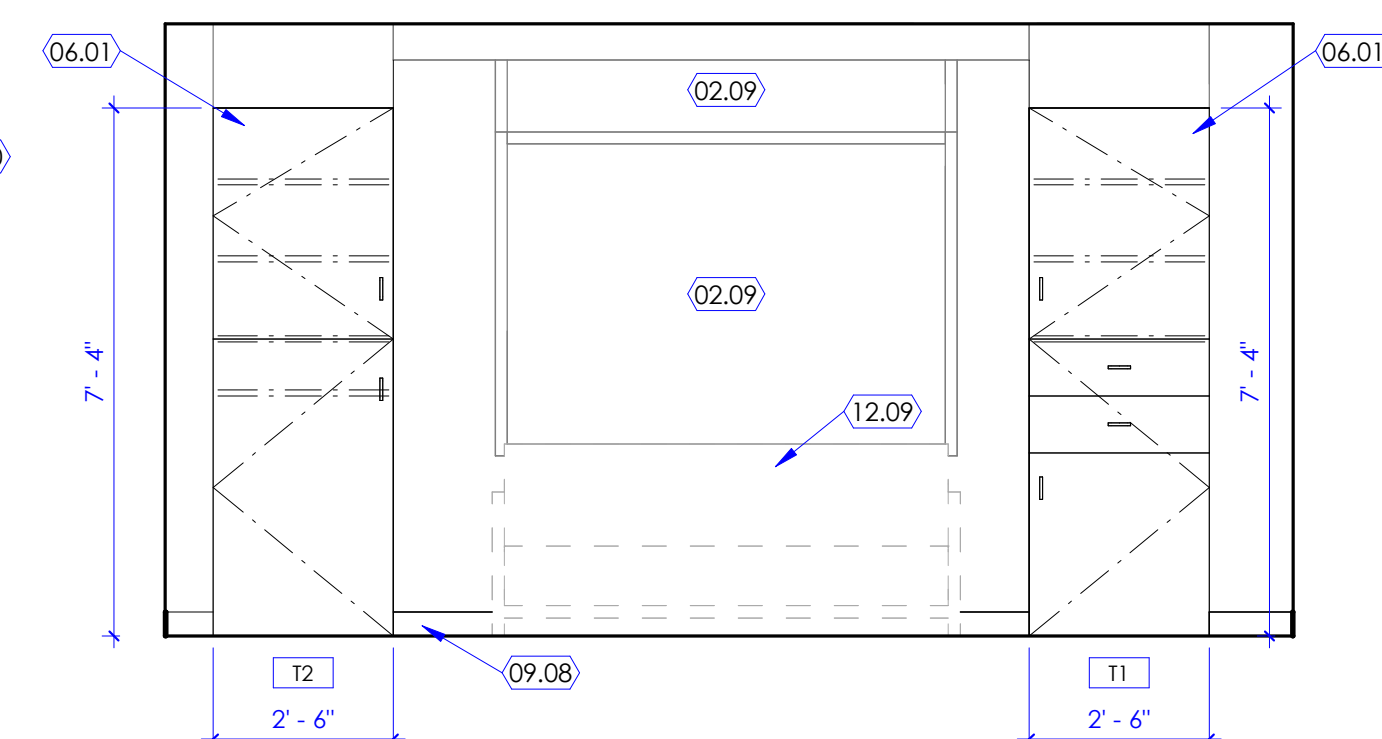
10 Patient Room Head Wall Detail



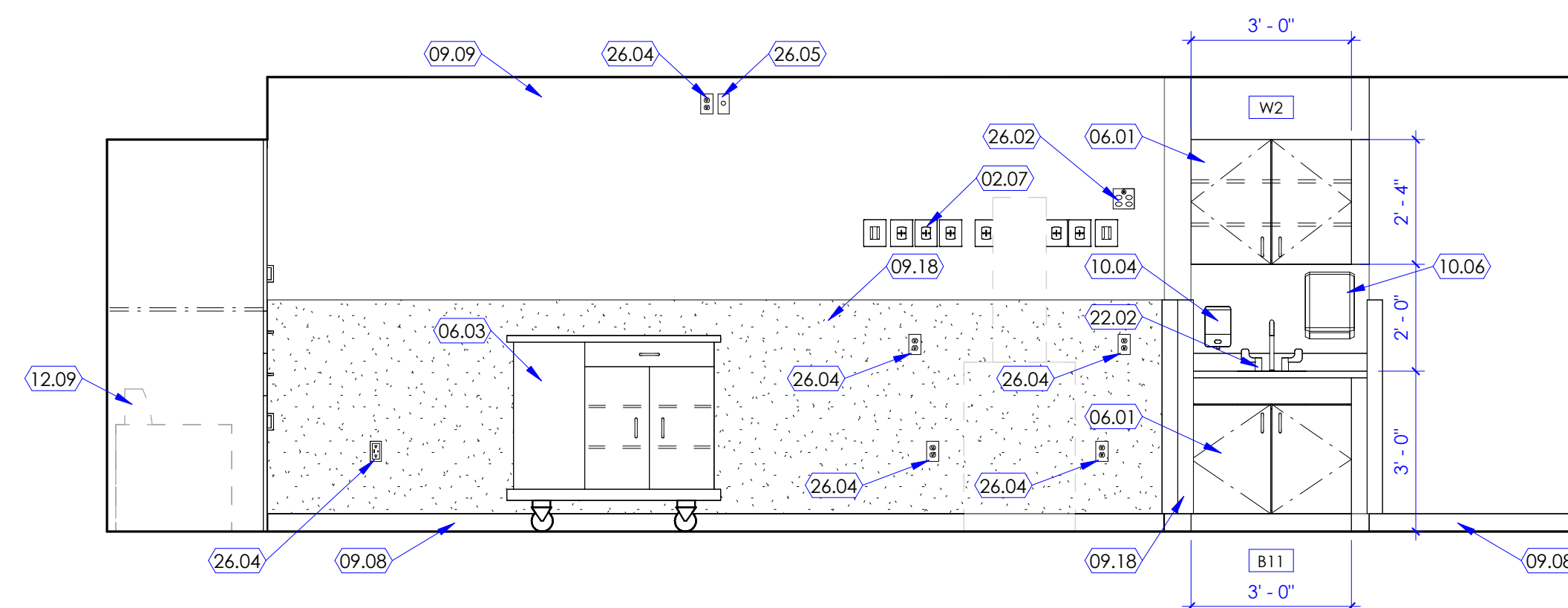
2 Labor & Delivery



3 Labor & Delivery

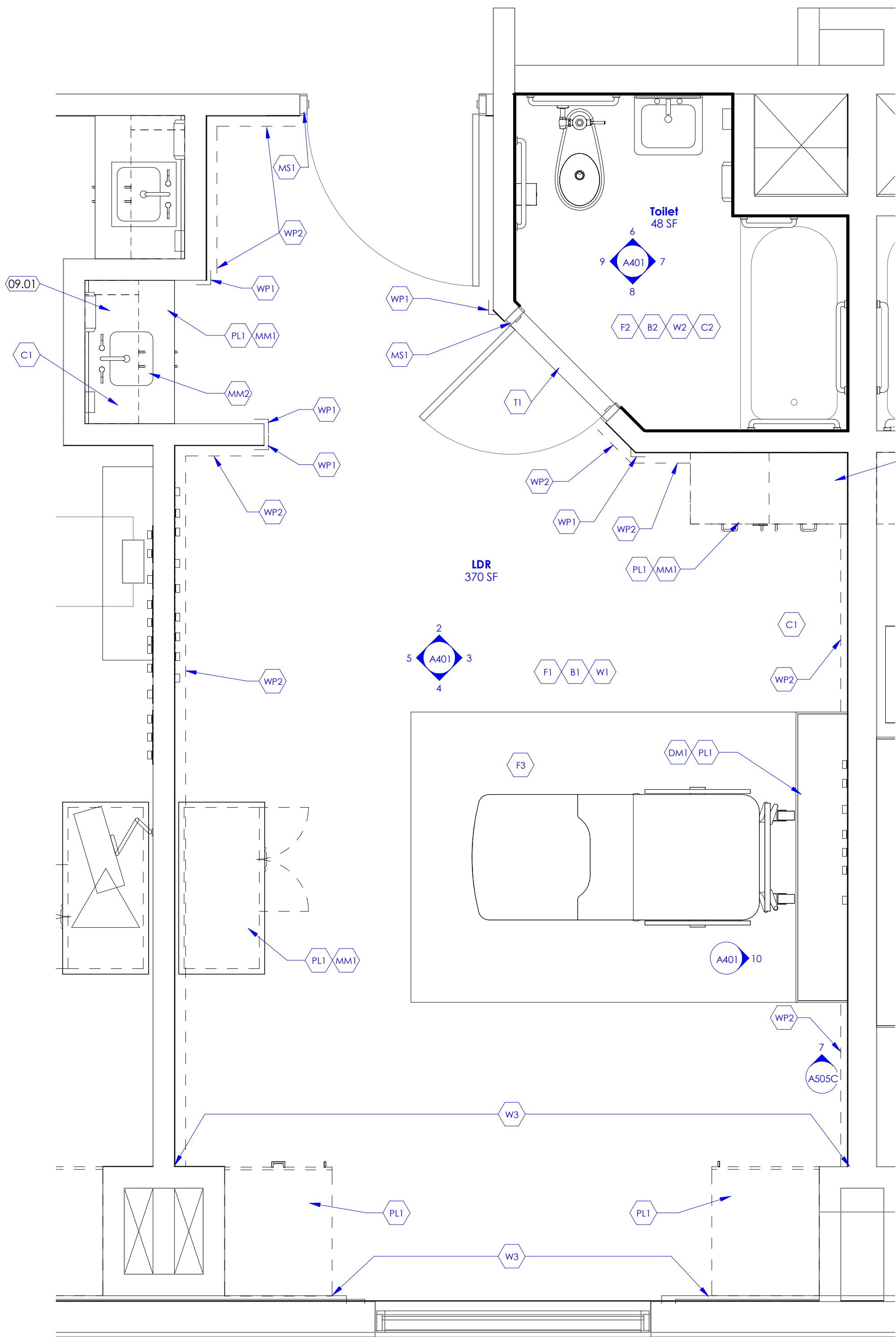


4 Labor & Delivery
SCALE: 3/8" = 1'-0"



5 Labor & Delivery
SCALE: 3/8" = 1'-0"

11/12/2025 10:20:49 AM



1 Enlarged Finish Plan
SCALE: 1/2" = 1'-0"

FINISH SCHEDULE							
TAG	FINISH TYPE	SIZE	MATERIAL DESCRIPTION	MANUFACTURER	STYLE	MODEL #	COMMENTS
F1	FLOOR FINISH		SHEET VINYL	TARKETT	IQ OPTIMA	807	-
F2	FLOOR FINISH	12" X 12" SHEET	PORCELAIN TILE	CROSSVILLE	NOTORIOUS	NTR06, MOSAICS	3
F3	FLOOR FINISH		SHEET VINYL - ACCENT	TARKETT	IQ OPTIMA	977	-
B1	WALL BASE	4" HIGH	COVED SHEET VINYL	TARKETT	IQ OPTIMA	-	1
B2	WALL BASE	6" HIGH	PORCELAIN TILE	CROSSVILLE	NOTORIOUS	-	3
W1	WALL FINISH		PAINT	SHERWIN WILLIAMS	SATIN FINISH	SW 7008	-
W2	WALL FINISH	12" X 24"	PORCELAIN TILE	CROSSVILLE	NOTORIOUS	NTR01	4
W3	WALL FINISH		PAINT - ACCENT	SHERWIN WILLIAMS	SATIN FINISH	SW 6201	-
C1	CEILING FINISH	24" X 48"	ACOUSTICAL CEILING TILES AND GRID	CERTAINTED	SYMPHONY M COLLECTION	1220-IOF-1	7
C2	CEILING FINISH		PAINTED GYPSUM CEILING	SHERWIN WILLIAMS	SEMI-GLOSS FINISH	SW-7008	-
MS1	MISC. SURFACE FINISH		PAINTED HOLLOW METAL DOOR FRAME	SHERWIN WILLIAMS	SEMI-GLOSS FINISH	SW 7008	-
PL1	PLASTIC LAMINATE FINISH		PLASTIC LAMINATE SHEET OVER SUBSTRATE	LAMINART	VELLUM FINISH	3056-E	2
MM1	MONOLITHIC MATERIAL		SOLID SURFACE	CORIAN SOLID SURFACE	-	-	2
MM2	MONOLITHIC MATERIAL		SOLID SURFACE INTEGRAL SINK	CORIAN SOLID SURFACE	-	804P	-
WP1	WALL PROTECTION	3" LEGS	CORNER GUARD	INPRO ARCHITECTURAL PRODUCTS	150 HIGH IMPACT CORNER GUARD	0103	5
WP2	WALL PROTECTION	0.040" THICKNESS	WAINSCOT PANEL	INPRO ARCHITECTURAL PRODUCTS	PALLADIUM RIGID SHEET	0103	6, 8
T1	THRESHOLD		QUARTZ THRESHOLD	CORIAN QUARTZ	-	-	-
DM1	DECORATIVE METAL		METAL TRIM AT REVEAL	WILSONART	DECORATIVE METALS	6251	-

KEYED NOTES

09.01 PLASTIC LAMINATE FINISH TO EXTEND TO FASCIA PANEL/SOFFIT ABOVE.

COMMENTS

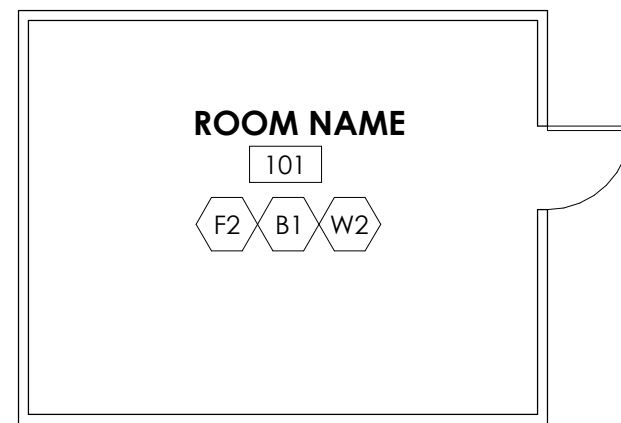
- TOP EDGE OF COVED SHEET VINYL TO BE FINISHED WITH AN ALUMINUM CAP. CONTINUE SHEET VINYL FLOORING COLOR INTO COVED SHEET VINYL BASE.
- BEFORE ORDERING MILLWORK FINISH MATERIALS, CONFIRM SELECTION WITH ARCHITECT. OWNER MAY RESELECT PLASTIC LAMINATE AND SOLID SURFACE FINISHES.
- USE GROUT MAPEI COLOR #47 CHARCOAL OR SIMILAR. INSTALL MOSAIC SHEETS ON FLOOR IN A SQUARE JOINT PATTERN.
- USE GROUT MAPEI COLOR #93 WARM GRAY OR SIMILAR. INSTALL WALL TILE IN A SQUARE JOINT PATTERN.
- CORNER GUARDS TO SPAN FROM TOP OF WALL BASE TO 4'-4" A.F.F. AND ALIGN WITH TOP OF WAINCOT PANEL WHERE OCCURS.
- WAINSCOT PANEL TO SPAN FROM TOP OF WALL BASE TO 4'-4" A.F.F. AND ALIGN WITH TOP OF CORNER GUARDS WHERE OCCURS.
- SEE REFLECTED CEILING PLAN FOR GRID ORIENTATION AND TILE LAYOUT.
- SEAL TOP EDGE OF WALL PROTECTION WITH A THIN CONTINUOUS BEAD OF CAULK. DO NOT USE TRIM.

GENERAL NOTES

- BASIS OF DESIGN FOR FINISHES: FINISHES INDICATED ON THE FINISH SCHEDULE ARE BASED ON THE NAMED MANUFACTURER AND THEIR PRODUCTS. SUBJECT TO COMPLIANCE WITH REQUIREMENTS, PROVIDE THE NAMED PRODUCT OR A COMPARABLE PRODUCT BY ONE OF THE APPROVED MANUFACTURERS LISTED IN THE PROJECT MANUAL. SEE RELEVANT SPECIFICATION SECTION.
- SEE "SAMPLE LAYOUTS" INDICATED ON FINISH PLANS FOR CLARIFICATION ON HOW DIFFERENT TYPES OF REQUIRED FINISHES ARE INDICATED WITH FINISH TAGS FOR FLOORS, WALLS, MISCELLANEOUS SURFACE, ETC. SEE FINISH FLOOR PLANS FOR REQUIRED FINISHES (INDICATED WITH FINISH TAGS SUCH AS F1, B1, W1, ETC.).
- LINE OF TRANSITION BETWEEN DIFFERENT TYPES OF FLOOR COVERING IS INDICATED ON THE FINISH FLOOR PLANS. IN PLACES WHERE TWO DIFFERENT FLOOR COVERINGS ABUT EACH OTHER, CONTRACTOR SHALL FOLLOW THE RELEVANT APPLICABLE "FLOOR COVERING TRANSITION DETAILS" INDICATED IN THIS CONSTRUCTION DOCUMENTS, WHERE TWO ROOMS ARE REQUIRED TO HAVE DIFFERENT FLOOR COVERINGS, LINE OF TRANSITION SHALL TYPICALLY OCCUR BELOW THE CENTER OF THE DOOR (LOCATED BETWEEN THE TWO ROOMS). AS THESE TRANSITION LINES ARE NOT INDICATED BELOW THE DOOR ON THE FINISH FLOOR PLANS, CONTRACTOR SHALL PROVIDE METAL TRANSITION STRIP (MANUFACTURED BY SCHLUTER OR EQUIVALENT) AS REQUIRED, AT EXTERIOR DOORS, PROVIDE ALUMINUM THRESHOLD MATCHING THE DOORWAY. FOR REMODEL PROJECTS, COORDINATE WITH DEMOLITION FLOOR PLAN AND NEW FLOOR PLAN TO DETERMINE WHERE NEW ABUTS EXISTING FLOOR COVERING THAT IS SCHEDULED TO REMAIN.
- LINE OF TRANSITION BETWEEN DIFFERENT TYPES OF WALL FINISH IS INDICATED ON THE INTERIOR ELEVATIONS AND FINISH FLOOR PLANS. FOR REQUIRED WALL PROTECTION TYPE (INDICATED WITH TAG WP1, WP2, ETC.), ON WALLS, COORDINATE WITH FINISH FLOOR PLANS AND INTERIOR ELEVATIONS.
- THERE ARE MISCELLANEOUS SURFACES THAT ARE EXPOSED AND WILL REQUIRE A FINISH. SUCH MISCELLANEOUS SURFACES ARE INDICATED IN THE DRAWINGS WITH FINISH TAGS SUCH AS MS1, MS2, ETC.
- PAINT ALL EXPOSED VISIBLE ITEMS SUCH AS METAL DECK, STEEL ANGLES, STEEL BEAMS, STEEL TRUSSES, MISC. STEEL ITEMS, PIPES, CONDUITS, ETC. UNLESS SPECIFICALLY NOTED AS A SURFACE NOT TO BE PAINTED, OR IF NATURAL FINISH IS REQUIRED, PAINT SURFACES USING FIELD COLORS AND ACCENT COLORS SPECIFIED BY THE ARCHITECT. DO NOT PAINT CONCEALED SURFACES, FINISHED METAL SURFACES, OPERATING PARTS, AND PRE-FINISHED ITEMS. VERIFY PAINTING SURFACE (SUCH AS STEEL, CONCRETE, MASONRY, GYPSUM BOARD, WOOD, ETC.) AND USE THE APPROPRIATE PAINT AND METHOD INDICATED IN THE PROJECT MANUAL UNDER RELEVANT SPECIFICATION SECTION. ALL HOLLOW METAL DOOR AND WINDOW FRAMES SHALL BE PAINTED. USE SEMI-GLOSS FINISH ON DOOR FRAMES.
- IN ROOMS AND AREAS WHERE GYPSUM BOARD CEILING IS INDICATED, PAINT CEILING WITH THE SAME COLOR AND TYPE AS ADJACENT WALLS. IN WET ROOMS (LIKE RESTROOM, KITCHEN, ETC.) WHERE EPOXY PAINT IS INDICATED AS A REQUIREMENT ON WALLS, PAINT CEILINGS AND SOFFITS WITH EPOXY TYPE PAINT. ALL GYPSUM BOARD SOFFITS SHALL BE PAINTED. COORDINATE ACCENT COLOR LOCATIONS WITH ARCHITECT WHEREVER INDICATED.
- SEE INTERIOR ELEVATIONS FOR PLASTIC LAMINATE FINISHES OVER CABINETS, COUNTERTOPS, WALLS, ETC. PLASTIC LAMINATE FINISHES ARE INDICATED AS PL1, PL2, ETC. COUNTERTOPS THAT ARE MONOLITHIC MATERIAL (SUCH AS SOLID SURFACE, QUARTZ, ETC. AND NOT PLASTIC LAMINATE WRAPPED), ARE INDICATED AS MM1, MM2, ETC.
- WHERE PORCELAIN AND/OR CERAMIC TILE FINISHES ARE INDICATED, PROVIDE METAL EDGE STRIPS (MANUFACTURED BY SCHLUTER OR EQUIVALENT) AT ALL OUTSIDE VERTICAL CORNERS AND TOP OF WAINSCOT.
- IN ROOMS AND AREAS (SUCH AS TOILET ROOMS, SHOWERS, ETC.) WHERE CERAMIC OR PORCELAIN TILES ARE INDICATED FOR WALL AND FLOOR FINISH, INSTALL BOTTOM ROW OF WALL TILE FIRST PER DETAIL 1/A603B. PROVIDE QUARTZ THRESHOLD AT DOORS TO TOILET ROOMS THAT ARE USED BY MULTIPLE USERS. SEE DETAILS 3 & 4 SHEET A603B.
- WHERE GYPSUM BOARD WALL ABUTS MASONRY WALL, PROVIDE REVEAL AS PER DETAIL 2/A603B.

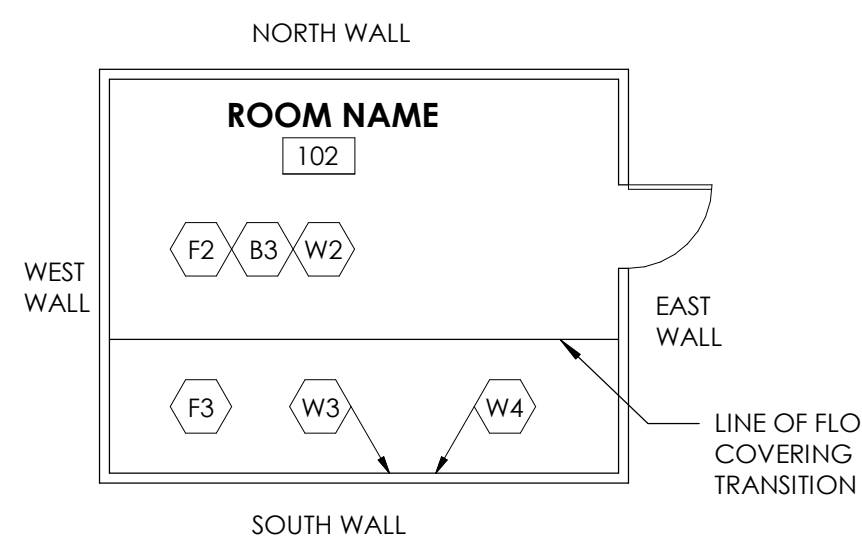
SAMPLE LAYOUTS

SAMPLE LAYOUT 1



NOTE: AS INDICATED IN ROOM NUMBER 101, MAJORITY OF THE ROOMS IN THE PROJECT SHALL HAVE A SINGLE TYPE OF FLOOR FINISH, WALL BASE AND WALL FINISH. WALL FINISH INDICATED AS "W2" SHALL APPLY TO ALL FOUR WALLS FROM FLOOR TO CEILING.

SAMPLE LAYOUT 2



NOTE: AS INDICATED IN ROOM NUMBER 102, SOME ROOMS SHALL HAVE MULTIPLE FLOOR AND WALL FINISHES. SEE GENERAL NOTE "C" ON SHEET A603A FOR FLOOR COVERING TRANSITIONS. THE WALL FINISH INDICATED AS "W2" IN THE ROOM (WITHOUT AN ARROW POINTING TO ANY SPECIFIC WALL) SHALL APPLY TO THE WEST, NORTH AND EAST WALL WHERE WALL FINISHES ARE INDICATED WITH AN ARROW POINTING TO THE SOUTH SIDE. WALL SHALL HAVE MULTIPLE FINISHES SUCH AS "W3" AND "W4". SEE INTERIOR ELEVATIONS FOR TRANSITION DETAILS BETWEEN "W3" AND "W4".

GENERAL NOTES

- SEE SHEET G003 AND G005 FOR SYMBOLS, GENERAL NOTES AND LEGEND.
- SEE SHEET A505A FOR CABINET LEGEND.
- SEE SHEET A402 FOR FINISH SCHEDULE AND GENERAL NOTES.

Melissa Allen

To: Sarah Stroud
Subject: RE: Riverton L&D Clarifications as of 11/7/2025

From: Sarah Stroud <Sarah.Stroud@imail.org>
Sent: Friday, November 7, 2025 3:41 PM
To: Sarah Stroud <Sarah.Stroud@imail.org>
Subject: Riverton L&D Clarifications as of 11/7/2025

Good afternoon,

Thank you all for attending the bid walk and for your great questions, here are some clarifications we can offer right away:

Phasing: We do want to start with rooms 1,2,3, it's logical that we then move to 4,5,6, with 7,8,9 last?

Construction Route: please note that we will want a covered dumpster near the utility (CUP) building, the route is attached and includes at least two badge scans to enter/exit? All teams on-site will need at least two badged staff?

Badging: The process includes an email to your employee, they will set up a (free) profile with Symplr, may be required to upload ID + photo? Then they will come on-site for their photo and badge? Not a difficult process but it takes a fair amount of coordination?

ICRA: This will likely be a level IV, our Infection Prevention Nurse typically requests:

- Hardwall containment not exceeding 3' into the corridor

- Ante-room for donning/doffing bunny suits

- Bunny suits, head and shoe covers inside the containment (provided by the Hospital)

- Negative air machines (2-3): doubled up to discharge into hallway

- (2) sticky mats regularly maintained

- Air testing at each phase

Restroom wall Niche: (2) are needed, should be made from tile, see attached email for photo and dimensions?

Trimless wall protection: IH is moving away from top side horizontal trim on Acrovyn as it creates a dust shelf, it should be caulked instead?

Ceiling Tiles: see attached photo of the ceiling tile type?

Where possible we will include these details in the revised plans, but I wanted to get them to you as soon as possible?

Best wishes,

Sarah Stroud

Facilities Manager, Riverton Hospital

Office (801) 285-2101 | Cell (801) 598-4274

