

## ADDENDUM

Date Issued:	Sep 19, 2025
Project:	Intermountain Health Layton Hospital - Mammography 201 W Layton Pkwy, Layton, UT 84041
Addendum Number:	1

The Contractors submitting proposals on the above-captioned project shall be governed by the following addendum, changes and explanations to the drawings and specifications and shall submit their bids in accordance therewith.

Item Number	General Items Description
1	<p>Questions by contractors and their response:</p> <p><b>Question #1:</b> What is the quantity of attic stock available for tile? Is it safe to assume there is sufficient to complete the entire scope of work for bidding purposes?  <b>Response from owner:</b> Ryan Grant with Layton Hospital checked the attic stock and verified that there is enough tile to complete the entire scope of work for this project.</p> <p><b>Question #2:</b> Please confirm that concrete chipping is to be preformed at night, otherwise please confirm all scope can be completed during normal hours for bidding purposes  <b>Response from owner:</b> We will want all concrete cutting/chipping to be completed after hours at night.</p> <p><b>Question #3:</b> Please confirm there is no p type wall on this project  <b>Response:</b> Confirmed. No wall type 'P' in this project</p> <p><b>Question #4:</b> Will door switch for Selenia be required as it is listed as optional.  <b>Response:</b> See electrical addendum.</p> <p><b>Question #5:</b> Please confirm deck height  <b>Response:</b> Floor to Floor height is 16'-0"</p> <p><b>Question #6:</b> On wall type D3 for existing wall it is understood that Radiology read room needs to be topped out at 2 hour rated but that is marked in every room. For existing walls in other rooms labeled D3 will there need to be any added framing/drywall?  <b>Response:</b> The wall between Mammo A106 and Radiology Read A111 is a new 2-hour rated wall. The wall between Mammo A106 and the existing Radiologist Room</p>

Item Number	General Items Description
	<p>11306 will need to be upgraded to a 2-hour rated wall. All other walls marked as 'D3' are existing 2-hour fire-rated walls. These are labeled 'D3' to indicate that any penetrations through them must comply with the requirements of wall type 'D3'. No additional framing or drywall is required for these existing 'D3' walls.</p> <p><b>Question #7:</b> Please confirm the jamb studs &amp; headers for doors are 3 5/8" 18 ga studs &amp; for the header over patient sub-wait will be 14 ga as per detail 5/6 on A502A Wall Details.</p> <p><b>Response:</b> Confirmed. Jamb studs and headers for door openings up to 4'-6" are to be 18 GA, per details 7/A502A and 6/A502A. The header over the patient sub-wait exceeds 8'-0"—please follow the third condition (8'-1" to 14'-0") under detail 6/A502A, which requires 14 GA studs.</p> <p><b>Question #8:</b> Please confirm if contractor is providing Access control, nurse call, and fire alarm. If so, who is the preferred/ current provider for those systems?</p> <p><b>Response:</b> See electrical addendum.</p> <p><b>Question #9:</b> Who is the current/preferred controls contractor?</p> <p><b>Response:</b> See mechanical addendum.</p> <p><b>Question #10:</b> Sheet EP 100 Overall Power Plan. What will be required for ICRA and off hours work for these conduit runs. The conduits that go back to the ELEC Room will most likely need to run on the existing conduit rack. There is a large amount of 5' wide supply and return duct in this area and the route through it is on the rack. The CT and Clean Linen supply will need to be shutdown to accommodate the route. Also, the imaging hallway is busy with patients. The conduit will pass through the 2hr fire envelope near the electrical room and 2# lead shielded walls.</p> <p><b>Response:</b> All work outside of the Mammo Suite is to be performed after hours or on weekends. As discussed during the pre-bid walkthrough, please use a Hepacart for any work in areas outside of the Mammo Suite. This applies to all med gas tie-ins as well as electrical, mechanical, and plumbing work. Any penetrations through fire-rated walls must be properly fire-caulked. Penetrations through lead-shielded walls must be patched using the same lead lining material that was penetrated.</p> <p><b>Question #11:</b> Sheet M101. In the Radiology reading room there is a duct in the new 2hr wall. Should this existing exhaust duct be moved into the room? It will allow the wall to go to the deck and eliminate one FSD through the new wall.</p> <p><b>Response:</b> See mechanical and electrical addendum.</p> <p><b>Question #13:</b> Sheet A112 Radiologist 11306. Would you mind showing ceiling repair at the wall we are upgrading to 2hr</p> <p><b>Response:</b> Yes. See attached Sheet A112</p>

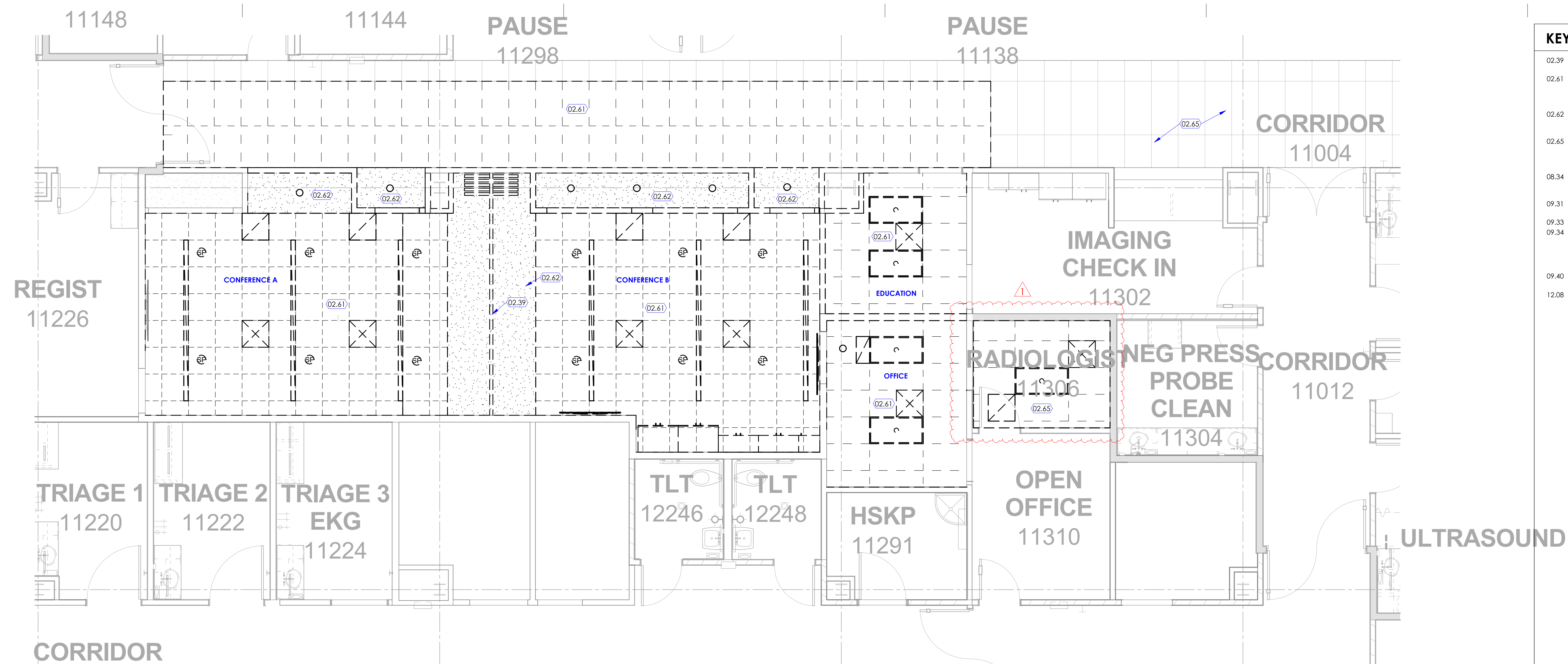
Sheet Number	Drawings
<b>Architectural Drawings</b>	
A112	Remove and reinstall ceiling tiles, grids, lights, and diffusers in Radiologist Room 11306 to upgrade existing wall to a 2-HR fire rated wall. Re-install ceiling tiles, grids to match existing layout. Clean lights and diffusers before reinstallation.
<b>Mechanical Drawings</b>	
See Mechanical Addendum 01	
<b>Electrical Drawings</b>	
See Electrical Addendum 01	

**Attachments:**

Architectural Drawings: A111

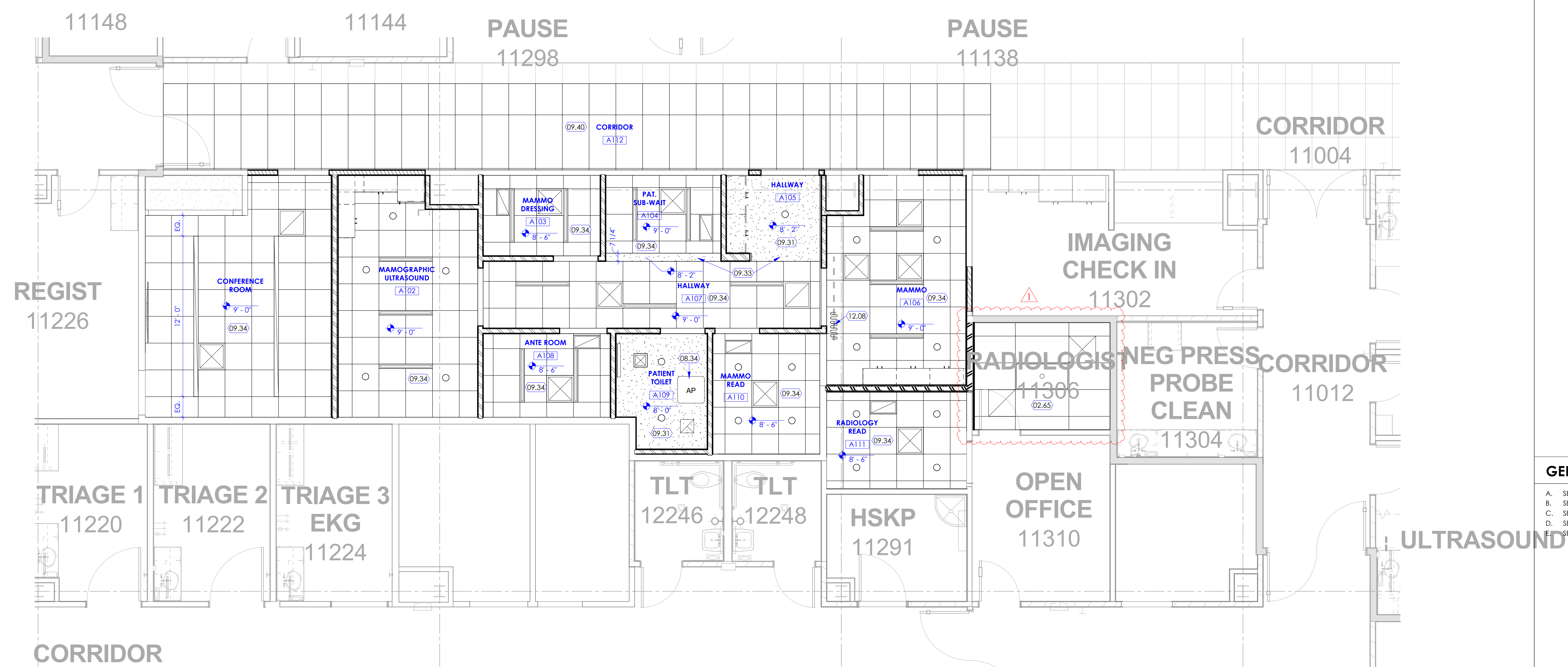
Mechanical Drawings: See Mechanical Addendum 01

Electrical Drawings: See Electrical Addendum 01



1 Demolition Ceiling Plan Level 1  
SCALE: 1/4" = 1'-0"

SCALE: 1/4" = 1'-0"



2 Reflected Ceiling Plan Level 1  
SCALE: 1/4" = 1'-0"

SCALE: 1/4" = 1'-0"

## KEYED NOTES

- |       |  |
|-------|--|
| 02.39 | COMPLETELY REMOVE OPERABLE PANEL PARTIAL, INCLUDING ITS SUPPORT STRUCTURE, OVERHEAD BEAMS AND ALL ASSOCIATED ACCESSORIES.  |
| 02.61 | REMOVE EXISTING CEILING TILES AND GRIDS, LIGHT FIXTURES, HVAC DIFFUSERS, REARERIES AND OTHER ACCESSORIES. DISPOSE OF ALL DEBRIS TO THE SALVAGE CEMENTING TILES, LIGHT FIXTURES AND HVAC GRILLS AND RETURN TO OWNER.  |
| 02.62 | REMOVE EXISTING GYPSUM BOARD SOFFIT/CEILING AND FRAMING SYSTEM, INCLUDING ALL EXISTING LIGHT FIXTURES, HVAC DIFFUSERS, SPEAKERS AND OTHER CEILING MOUNTED ITEMS. REFER TO MEP DRAWINGS.  |
| 02.65 | REMOVE EXISTING CEILING TILES AND GRIDS, LIGHT FIXTURES, HVAC DIFFUSERS, REARERIES FOR A/C. ACQUIRED FOR FUTURE PROJECT. RE-INSTALL AFTER ALL ABOVE CEILING WORK IS COMPLETE. REPLACE TO MATCH EXISTING IF AVAILABLE DURING CONSTRUCTION.  |
| 02.84 | 24 " X 24 " GRC ACCESS PANEL, BASIS OF DESIGN: STEALTH CELING DROP-PANLS MODEL NUMBER AP-DP-2424, ROUGH OPENING PER MFR, COORDINATE LOCATION OF ACCESS PANELS WITH M/E/P.  |
| 09.31 | GYPSUM BOARD CEILING, SEE DETAIL 14/A5033A. SEE MEP DRAWINGS FOR LIGHTS AND DIFFUSERS.   |
| 09.33 | GYPSUM BOARD HEADER, SEE DETAIL 6/A5033A.  |
| 09.34 | ACOUSTIC CEILING TILES AND GRIDS, CEILING TILES TO BE ARMSTRONG TRIMMABLE TYPE 15'X15' TILE. 15'X15' SQUARE EDGE DETAIL: SQUARE LAY-IN, GRIDS SHALL BE 5/16" PREDLUX E-EXPOSED HEAVY DUTY, ANGLE JOINTS SHALL BE 5/16" PREDLUX E-EXPOSED HEAVY DUTY, DETAILS ON SHEET A5033A. SEE MEP DRAWINGS FOR LIGHTS AND DIFFUSERS. |
| 09.40 | NEW 24 "X24 " CEILING TILES AND GRIDS TO MATCH ADJACENT DETAILS, SEE M/E/P DRAWINGS FOR LIGHTS AND DIFFUSERS.  |
| 12.08 | FINISH CURVED WALL, SEE DETAIL 14/FW1. SEE FINISH SCHEDULE AND PROJECT MANUAL, SEE DETAIL 14/A5033A.   |

## GENERAL NOTES

- A. SEE SHEET G003 AND G005 FOR SYMBOLS, GENERAL NOTES AND LEGEND.
- B. SEE SHEET A505A FOR CABINET LEGEND.
- C. SEE SHEET A601A FOR DOOR SCHEDULE.
- D. SEE SHEET A602A FOR WINDOW SCHEDULE.
- E. SEE SHEET A603A FOR FINISH SCHEDULE AND GENERAL NOTES.

**ADDENDUM #1****DATE:** September 19, 2025**PROJECT NO:** 250580**PROJECT:** Intermountain Layton Hospital Mammography Remodel

---

The following revision, additions, deletions, and/or items of clarification shall hereby be included as an integral part of the Contract Documents for the above-listed project and shall be fully binding. All other requirements of the original plans and specification shall remain in effect in their respective order.

**DIVISION – 21,22,23,26****DRAWINGS****SHEET - M101**

1. Relocated existing exhaust located above wall between Mammography room and Rad Reading room to eliminate the need for a fire smoke damper.

**SPECIFICATIONS****SECTION – 230900 INSTRUMENTATION AND CONTROL FOR HVAC**

1. Part 2 – Products, paragraph 2.1 A: The existing system at Layton Hospital is a Johnson Control Metasys system. The controls vendor and contractor should therefore be changed from the stated Siemens Controls system to a Johnson Controls Metasys system to be installed by the Johnson Controls home office. No other vendors will be allowed.

**PRIOR APPROVALS**

The following manufacturers, trade names and products are allowed to bid on a name brand only basis with the provision that they completely satisfy all and every requirement of the drawings, specifications and all addenda shall conform to the design, quality and standards specified, established and required for the complete and satisfactory installation and performance of the building and all its respective parts.

<b><u>Item</u></b>	<b><u>Manufacturer</u></b>	<b><u>Comments</u></b>
Water Closets	Slone	Approved
Lavatories	Slone	Approved
Duct Mounted Access Doors	United Enertech	Approved
Flexible Duct	JP Lamborn	Approved
High Efficiency Take-Offs	Southwark	Approved
Test and Balancing	BCS	Approved

End of Addendum

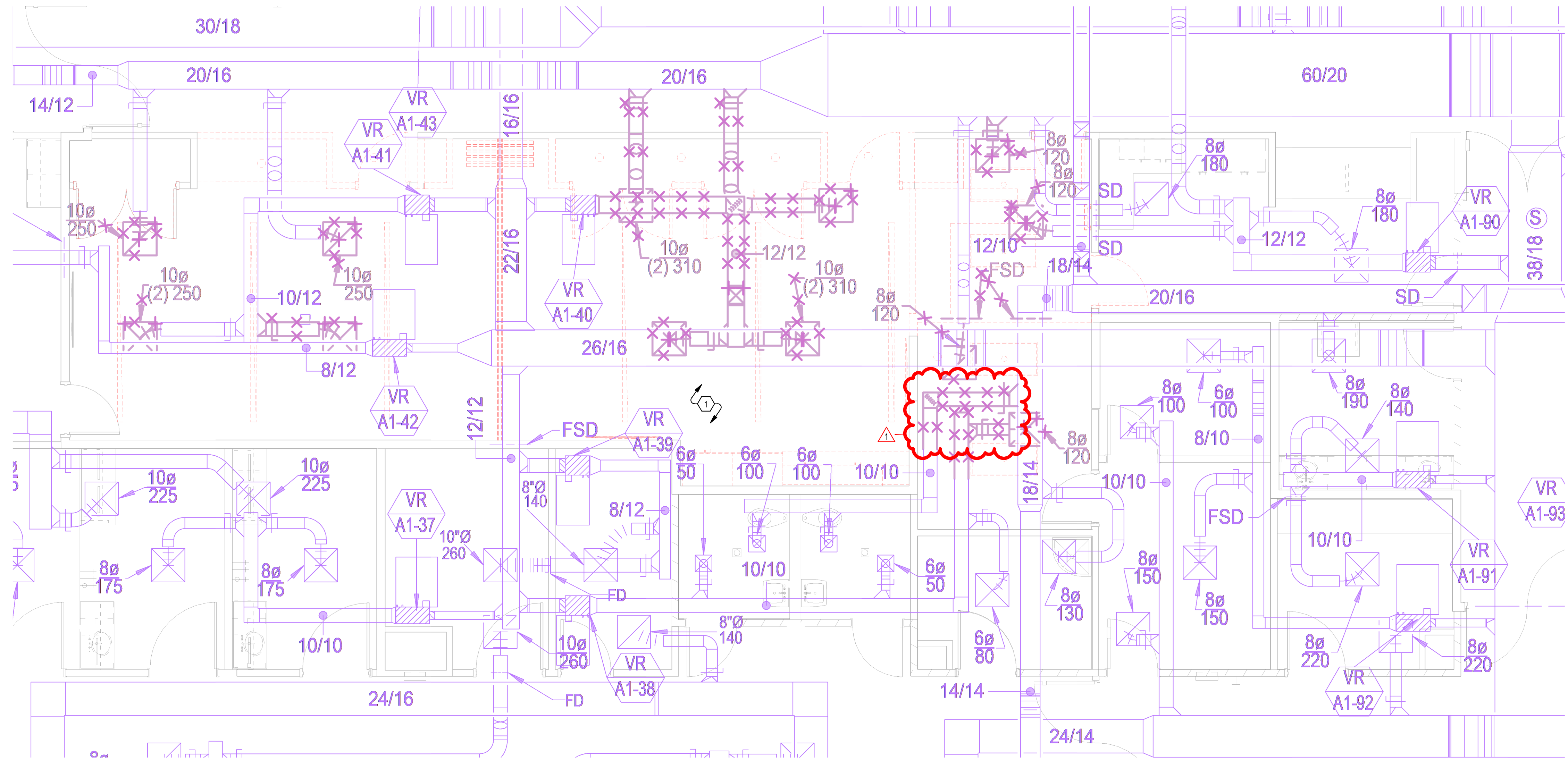
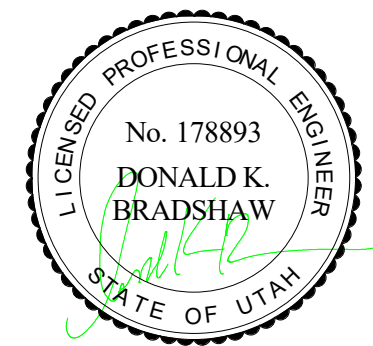




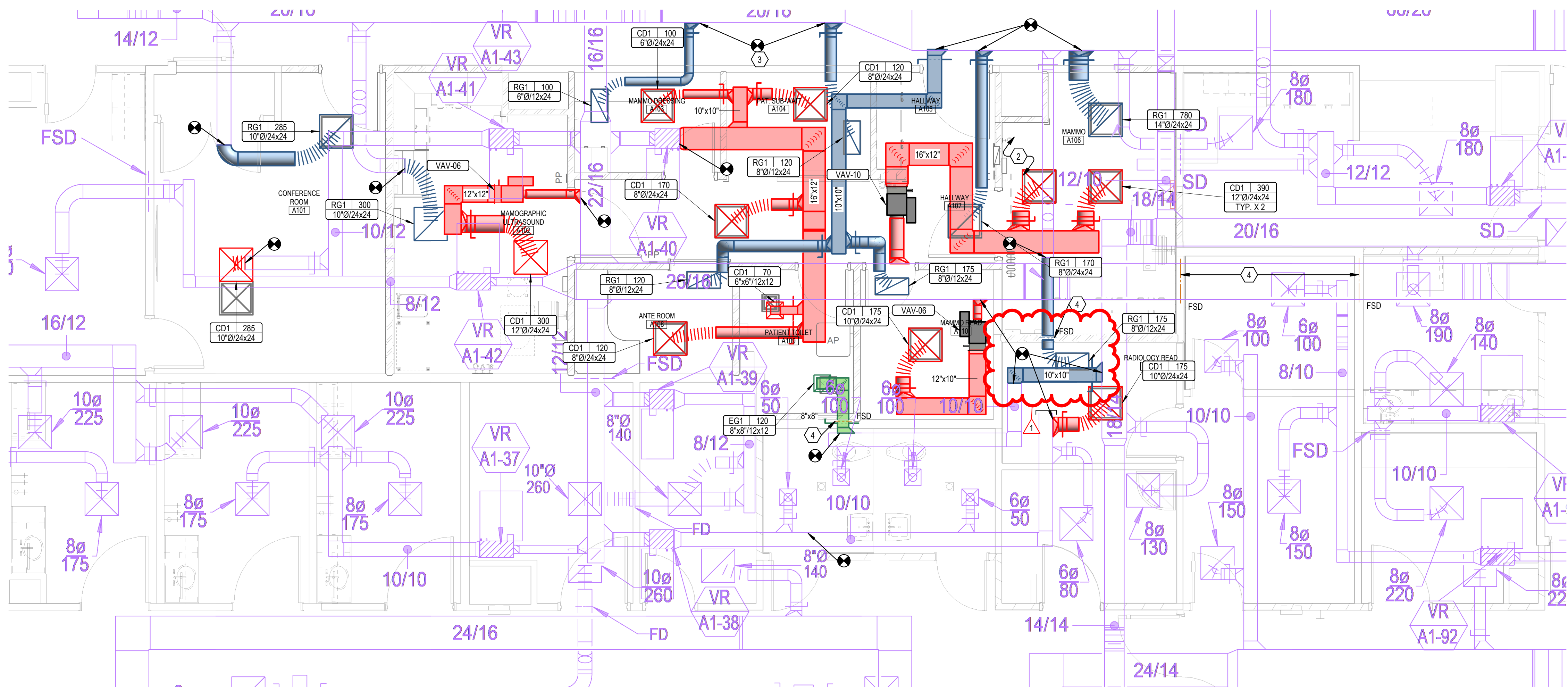
- KEYNOTES**
- EXISTING SHOWN PURPLE AND LIGHT TO REMAIN, ITEMS SHOWN DARK AND CROSSED OUT TO BE REMOVED. CAP ALL UNUSED DUCTWORK. FIELD VERIFY EXISTING CONDITIONS. TYPICAL.
  - EXISTING SHOWN PURPLE AND LIGHT TO REMAIN, NEW WORK SHOWN COLORED AND DARK. FIELD VERIFY EXISTING CONDITIONS. TYPICAL.
  - CONNECT TO EXISTING DUCT AT APPROXIMATELY THIS POINT. FIELD VERIFY EXISTING CONDITIONS. TYPICAL.
  - INSTALL NEW FIRE/SMOKE DAMPER ALONG 2 HR RATED WALL.

**NJRA**  
ARCHITECTS

NJRA Architects, Inc.  
5223 S. Ascension Way, Suite 350  
Murray, Utah 84123  
801.364.9259  
www.njraarchitects.com



1  
M101  
LEVEL 1 MECHANICAL DEMO PLAN  
1/4" = 1'-0"



2  
M101  
LEVEL 1 MECHANICAL HVAC PLAN  
1/4" = 1'-0"

Intermountain Health  
Layton Hospital Mammography

201 W Layton Pkwy  
Layton, UT 84041

NJRA Project # 24236  
Construction Documents Aug 01, 2025  
Addendum #1 09/18/2025

LEVEL 1 HVAC  
DEMO AND  
NEW PLANS

M101





Mechanical Engineering  
Electrical Engineering  
Technology Engineering  
Acoustical Engineering  
Lighting Design  
Theatre Design  
Fire Protection Engineering  
Building Commissioning

Salt Lake City | Phoenix | St. Louis | Baltimore  
[p] 800-678-7077  
www.spectrum-engineers.com

## Electrical Addendum #1

---

<b>Date:</b>	September 18, 2025	<b>From:</b>	Jason Worthen
<b>To:</b>	Shailesh Munot	<b>Email:</b>	<a href="mailto:Jason.worthen@speceng.com">Jason.worthen@speceng.com</a>
<b>Company:</b>	NJRA Architects	<b>Phone:</b>	801-834-9973
<b>Job:</b>	Layton Hospital Mammography	<b>Re:</b>	
<b>Job No:</b>	250358		
<b>Cc:</b>			

---

This Addendum shall be considered part of the Contract Documents and Project Manual for the above mentioned project as though it had been issued at the same time and shall be incorporated integrally therewith. Where provisions of the following supplementary data differ from those of the original Contract Documents and Project Manual, the Addendum shall govern and take precedence.

---

### Questions

1. Will door switch for Selenia be required as it is listed as optional.?
  - No the door switch will not be required.
2. Please confirm if contractor is providing Access control, nurse call, and fire alarm. If so, who is the preferred/ current provider for those systems?
  - The contractor will be providing Access control, it will be adding on to the Lenel system the only approved vendor is Convergent.
  - Video surveillance to be included in the contractor's scope, this will also need to be installed by Convergent.
  - Nurse Call will be Baxter, formerly Hill-Rom. Nurse call devices will be furnished, installed and programmed by Baxter under a separate contract with the owner. All rough-in and cabling will need to be provided and installed by the contractor. Cabling will need to meet Intermountain division 27 specifications. Contractor will need to coordinate with Baxter during the construction process.
  - Fire Alarm manufacturer is Siemens and will need to be installed by a Siemens vendor.



Mechanical Engineering  
Electrical Engineering  
Technology Engineering  
Acoustical Engineering  
Lighting Design  
Theatre Design  
Fire Protection Engineering  
Building Commissioning

Salt Lake City | Phoenix | St. Louis | Baltimore  
[p] 800-678-7077  
www.spectrum-engineers.com

## Drawings

1. EL601 – Interior Lighting Fixture Schedule
  - a. Added more approved manufacturers to the lighting fixture schedule.
2. EY101 – Level 1 Auxiliary Plan
  - a. Removed one smoke damper to match the mechanical plans.

END OF ADDENDUM

Attachments < EL601, EY101 >



INTERIOR LIGHTING FIXTURE SCHEDULE											
GENERAL NOTES											
<div><div><div><div>HEIGHT</div><div>DIAMETER</div></div><div><div>LENGTH</div><div>WIDTH</div></div></div><div><div>1. SUBSTITUTIONS AND/OR EQUAL FIXTURES MUST RECEIVE APPROVAL PRIOR TO BIDDING, THEY MUST BE SUBMITTED TO THE ENGINEER NO LESS THAN 2 WEEKS PRIOR TO BID OPENING.</div><div>2. SAMPLES MUST BE PROVIDED FOR ANY AND ALL FIXTURES UPON A/E REQUEST PRIOR TO RELEASING FIXTURES.</div><div>3. ALL FIXTURES SHALL BE LISTED AND APPROVED FOR THEIR INTENDED USE AND LOCATION.</div><div>4. VERIFY THE PROPER MOUNTING KITS OR ACCESSORIES TO FACILITATE INSTALLATION AS SHOWN AT EACH LOCATION ON THE DRAWINGS.</div><div>5. COMPLY WITH THE "INTERIOR LIGHTING" SECTION OF THE SPECIFICATIONS.</div><div>6. ALL LIGHT FIXTURES TO BE EITHER "DLC" OR "LIGHTING FACTS" LISTED OR TO BE APPROVED BY ARCHITECT/ENGINEER AND OWNER.</div><div>7. CONTRACTOR ALLOWANCE PRICES ARE ACCURATE WHEN THIS JOB WAS SPECIFIED. CONTRACTOR AND ELECTRICAL DISTRIBUTOR SHALL VERIFY THIS ALLOWANCE AND REPORT ANY PROBLEMS TO THE ENGINEER BEFORE THE BID. ALLOWANCE PRICE MAY OR MAY NOT INCLUDE LAMP(S) OR FREIGHT AS NOTED, AND DO NOT INCLUDE ANY TAXES.</div></div></div>											
ID	DESCRIPTION	SIZE (NOMINAL)	DELIVERED DIRECT LUMENS	LUMINAIRE DELIVERED INDIRECT LUMENS	COLOR TEMP	CRI	TYPE	VOLTAGE	WATTS	MANUFACTURER (CATALOG SERIES)	
(D4D)	DESCRIPTION: 4" ROUND, RECESSED LED DOWNLIGHT, SEMI-SPECULAR REFLECTOR MOUNTING: CEILING, RECESSED FINISH: WHITE TRIM FINISH OPTICS: - OPTIONS: DIM TO DARK EM: -	LENGTH: - WIDTH: - DEPTH: - DIAMETER: 0' - 4"	1,600		3500K	90	DIM TO DARK	120/277	22	GOTHAM (V04D15LM3K90CRIMDDARK)MVOL 7271010PARLS8FW1 LIGHTOLIER (4RN CAL1593SM210200U CARDLCD) COOPER (LD4C20DE010 ELAC10200354LBW2H1B26)	
(D6)	DESCRIPTION: 6" ROUND, RECESSED LED DOWNLIGHT, SEMI-SPECULAR REFLECTOR MOUNTING: CEILING, RECESSED FINISH: WHITE TRIM FINISH OPTICS: - OPTIONS: - EM: -	LENGTH: - WIDTH: - DEPTH: - DIAMETER: 0' - 6"	1,500		3500K	90	0-10V DIMMING (1%)	120/277	19	GOTHAM (EVO 35/15 AR LSS MWD MVOLT G21 TRW) HALO (HC615D010HM612835 61MDHW7) LIGHTOLIER (6RNP6RDL15835CCZ10U)	
(D6M)	DESCRIPTION: 6" ROUND, RECESSED LED DOWNLIGHT, SEMI-SPECULAR REFLECTOR MOUNTING: CEILING, RECESSED FINISH: WHITE TRIM FINISH OPTICS: - OPTIONS: - EM: -	LENGTH: - WIDTH: - DEPTH: - DIAMETER: 0' - 6"	2,000		3500K	90	0-10V DIMMING (1%)	120/277	23	GOTHAM (EVO 35/15 AR LSS MWD MVOLT G21 TRW) HALO (HC615D010HM612835 61MDHW7) LIGHTOLIER (6RNP6RDL15835CCZ10U)	
(ER)	DESCRIPTION: X-RAY IN USE LIGHT MOUNTING: WALL FINISH: SCBA OPTICS: - OPTIONS: - EM: -	LENGTH: - WIDTH: - DEPTH: -			RED		NO DIMMING	120/277	3	KENALL (METMSU MW R X-RAY IN USE DT) LITHONIA (LOM P W 1 R 120-277 SW16 X-RAY IN USE) CHLORIDE (AMS GW XRAY IN USE RFR) EMERGENSEE (SEEXEL-1-G-C-A-CUST OM-XRAY IN USE) EXITRONIX (VEX-U-LB-WH-SS12)	
(LG4)	DESCRIPTION: 4" X 4" LINEAR RECESSED SLOT, GRID MOUNT MOUNTING: CEILING, RECESSED FINISH: SCBA OPTICS: - OPTIONS: - EM: -	LENGTH: 4' - 0" WIDTH: 0' - 4" DEPTH: -	3,200		3500K	90	0-10V DIMMING (1%)	120/277	25	PINNACLE (E4A-835-4-GX-U-OL1-1-W) NEORAY (S124DR) MARK LIGHTING (SL4L)	
(SW2)	DESCRIPTION: 2' LED VANITY LIGHT, SATIN CHROME FINISH, 2.25" WIDE MOUNTING: SURFACE, WALL FINISH: SCBA OPTICS: - OPTIONS: - EM: -	LENGTH: 2' - 0" WIDTH: 0' - 2.25" DEPTH: -	2,000		3500K	90	NO DIMMING	120/277	19	EDGE LIGHT (TW12-S11-1RE-36"-35K-CH) EUREKA (3541-35-LED-17.40-120/277-SC-WH) LBL (LW496-OP-XX-LED-277) WAC (WS-77363) 81651W08P10V-LED-226 LIGHTWAY (NEQV-426-LED-02C-3-STANDARD- FINISH) AFX (TADV2404LAJDSN)	
(UC2)	DESCRIPTION: 2' LED UNDERCABINET LIGHT MOUNTING: SURFACE FINISH: SCBA OPTICS: - OPTIONS: - EM: -	LENGTH: 2' - 0" WIDTH: - DEPTH: -	600		3500K	90	NO DIMMING	120/277	8	DAY-BRITE (LINC5100E-L28-935-UNV-WHG-DIM) KENALL (ALUCLED-1-MW-11L35K-24-277) AIREY-THOMPSON (13HC-N-35K-24-2-3-D11) KELVIX (UC22 3040 010V 120/277 WH)	



NJRA Architects, Inc.  
5223 S. Ascension Way, Suite 350  
Murray, Utah 84123  
801.364.9259  
www.njraarchitects.com



Intermountain Health  
Layton Hospital  
Mammography

201 W Layton Pkwy  
Layton, UT 84041

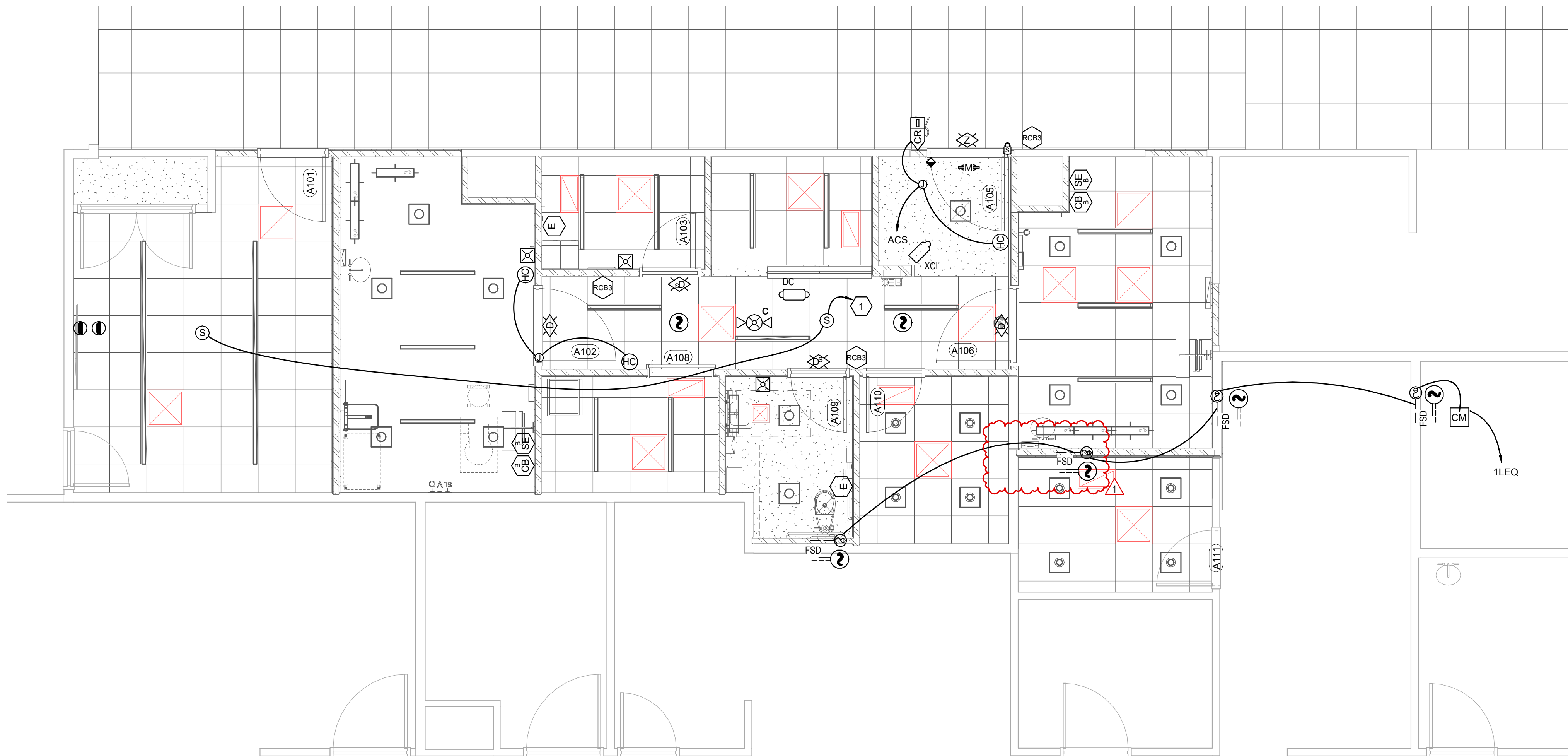
NJRA Project # 24236.00  
Construction Documents Aug 1, 2025  
Addendum #1 09/18/2025

INTERIOR  
LIGHTING  
FIXTURE  
SCHEDULE

EL601

A:\odesk\_Docs\230358 - Intermountain Layton Hospital Mammography & Echocardiography\230358 Elec Central.rvt  
9/18/2025 1:40:05 PM

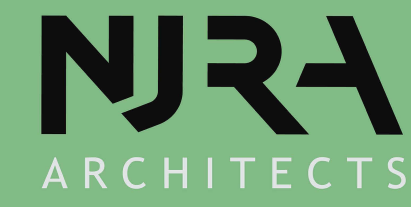
1 LEVEL 1 AUXILIARY PLAN  
SCALE: 1/4" = 1'-0"



GENERAL SHEET NOTES

SHEET KEYNOTES

- 1 CONNECT TO EXISTING IP PAGING SYSTEM IN CORRIDOR.



NJRA Architects, Inc.  
5223 S. Ascension Way, Suite 350  
Murray, Utah 84123  
801.364.9259  
www.njraarchitects.com



Intermountain Health  
Layton Hospital  
Mammography

201 W. Layton Pkwy  
Layton, UT 84041

NJRA Project # 24236.00  
Construction Documents Aug 1, 2025  
Addendum #1 09/18/2025

LEVEL 1  
AUXILIARY  
PLAN

EY101