



# ADDENDUM 004

---

<b>project</b>	Intermountain Alta View Hospital Acute Rehab Unit	<b>project no</b>	19740.00
<b>date</b>	2021-01-25	<b>no. pages</b>	
<b>owner</b>	Intermountain Medical Group Support		
<b>contractor</b>			
<b>bid date</b>	2021-01-26	<b>bid time</b>	4:00 pm

---

This Addendum shall be considered part of the Contract Documents and Project Manual for the above mentioned project as though it had been issued at the same time and shall be incorporated integrally therewith. Where provisions of the following supplementary data differ from those of the original Contract Documents and Project Manual, the Addendum shall govern and take precedence.

---

## general

### 4.1 **FLOORING IN ROOMS LD110 & LD111:**

1. For bidding purposes, consider a sheet vinyl flooring with 6" covered base in these 2 rooms (until the Owner selects / approves flooring and wall base finishes in these rooms).
2. No flooring or wall base changes in room LD112.

## drawings

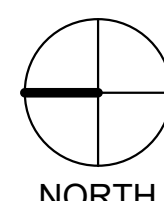
item	sheet#	description
4.1	AD110.1	<b><u>DEMOLITION PLAN - LEVEL 1 / LEVEL 2</u></b> <ol style="list-style-type: none"><li>1. Existing carpet flooring and wall base to remain (some keynotes were deleted for clarity).</li></ol>
4.2	A110.1	<b><u>ANNOTATED PLAN - LEVEL 1 / LEVEL 2</u></b> <ol style="list-style-type: none"><li>1. REFER to revised elevation call-outs in rooms LD101 to LD109, for clarity.</li><li>2. DELETED elevation A3.</li></ol>
4.3	A406	<b><u>ENLARGED PLANS + ELEVATIONS</u></b> <ol style="list-style-type: none"><li>1. REVISED keynotes in elevation A4 ELEV.4 - LD111 (W1125), for clarity.</li><li>2. UPDATED room name / number in elevation callouts, for clarity</li><li>3. NEW added elevation E3 ELEV. - ROOMS LD101 TO 109, for clarity.</li></ol>
4.4	A407	<b><u>ENLARGED PLANS + ELEVATIONS</u></b> <ol style="list-style-type: none"><li>1. REVISED keynotes in elevation E4 ELEV.3 - LD110 (W1124), for clarity.</li></ol>

2. UPDATED room name / number in elevation call-outs, for clarity
3. REVISED keynote in elevation B6 ELEV. 2 - OFFICE W1337, for clarity.

**End of Addendum 004**



**C3 LEVEL 1 - DEMOLITION PLAN**  
SCALE: 1/8" = 1'-0"



**KEYED NOTES**

- 200.0 SEE TYPICAL PATIENT ROOM DEMOLITION NOTES
- 210.0 EXISTING PLUMBING, REMOVE & DISPOSE IN ITS ENTIRETY, CAP UTILITY LINES AS NEEDED
- 215.1 EXISTING PLUMBING, REMOVE & DISPOSE IN ITS ENTIRETY, CAP UTILITY LINES AS NEEDED
- 215.2 EXISTING MED GAS OUTLETS, REMOVE & DISPOSE, CAP PIPES ABOVE CEILING
- 218.0 EXISTING WINDOW/DOOR/FRAME, PROTECT AS NECESSARY, REPAIR AS REQUIRED
- 218.1 EXISTING WINDOW/DOOR/FRAME, REMOVE & DISPOSE IN ITS ENTIRETY, DISPOAL FOR PROTECTION OF ADJACENT SPACES.
- 218.3 EXISTING DOOR/FRAME, REMOVE, SALVAGE & RELOCATE (SEE PLANS)
- 219.0 EXISTING MILLWORK, REMOVE, PROTECT IN PLACE
- 219.1 EXISTING MILLWORK, REMOVE & DISPOSE IN ITS ENTIRETY
- 221.0 EXISTING STUD WALL, REMOVE & DISPOSE IN ITS ENTIRETY
- 221.1 EXISTING STUD WALL, REMOVE & DISPOSE IN ITS ENTIRETY
- 221.2 EXISTING WALL PATCH AND PAINT TO MATCH EXISTING
- 222.1 EXISTING FLOORING, REMOVE & DISPOSE IN ITS ENTIRETY
- 223.1 EXISTING BASE, REMOVE & DISPOSE IN ITS ENTIRETY
- 225.1 EXISTING TILE WALL, REMOVE & DISPOSE IN ITS ENTIRETY, PREPARE WALL FOR NEW FINISH
- 226.1 EXISTING MEDICAL GASES (WALL), REMOVE IN ITS ENTIRETY, CAP PIPES IN PLACE
- 227.1 EXISTING CURBS AND FLOORING, REMOVE & DISPOSE IN ITS ENTIRETY
- 227.2 EXISTING SHOWER UNIT, REMOVE & DISPOSE OF IN ITS ENTIRETY
- 229.0 EXISTING DRINKING FOUNTAIN, REMOVE, SALVAGE & RELOCATE (SEE PLANS)
- 230.1 EXISTING NURSE CALL, REMOVE & DISPOSE IN ITS ENTIRETY
- 234.1 REMOVE EXISTING CONCRETE TOPPING (ABOUT 1" DEEP) AND PREPARE FOR NEW INTEGRATED SOLID SURFACE SHOWER PAN AND DRAIN. SEE PLUMBING DRAWINGS FOR ADDITIONAL INFORMATION.
- 238.0 EXISTING WALL MOUNTED SCRUB SHELVES, REMOVE & SALVAGE
- 240.0 REMOVE EXISTING SHOWER INSERT AND CURBING IN ITS ENTIRETY, PREPARE FOR NEW INTEGRATED SOLID SURFACE SHOWER INSERT (RECESSED)

**GENERAL DEMOLITION NOTES**

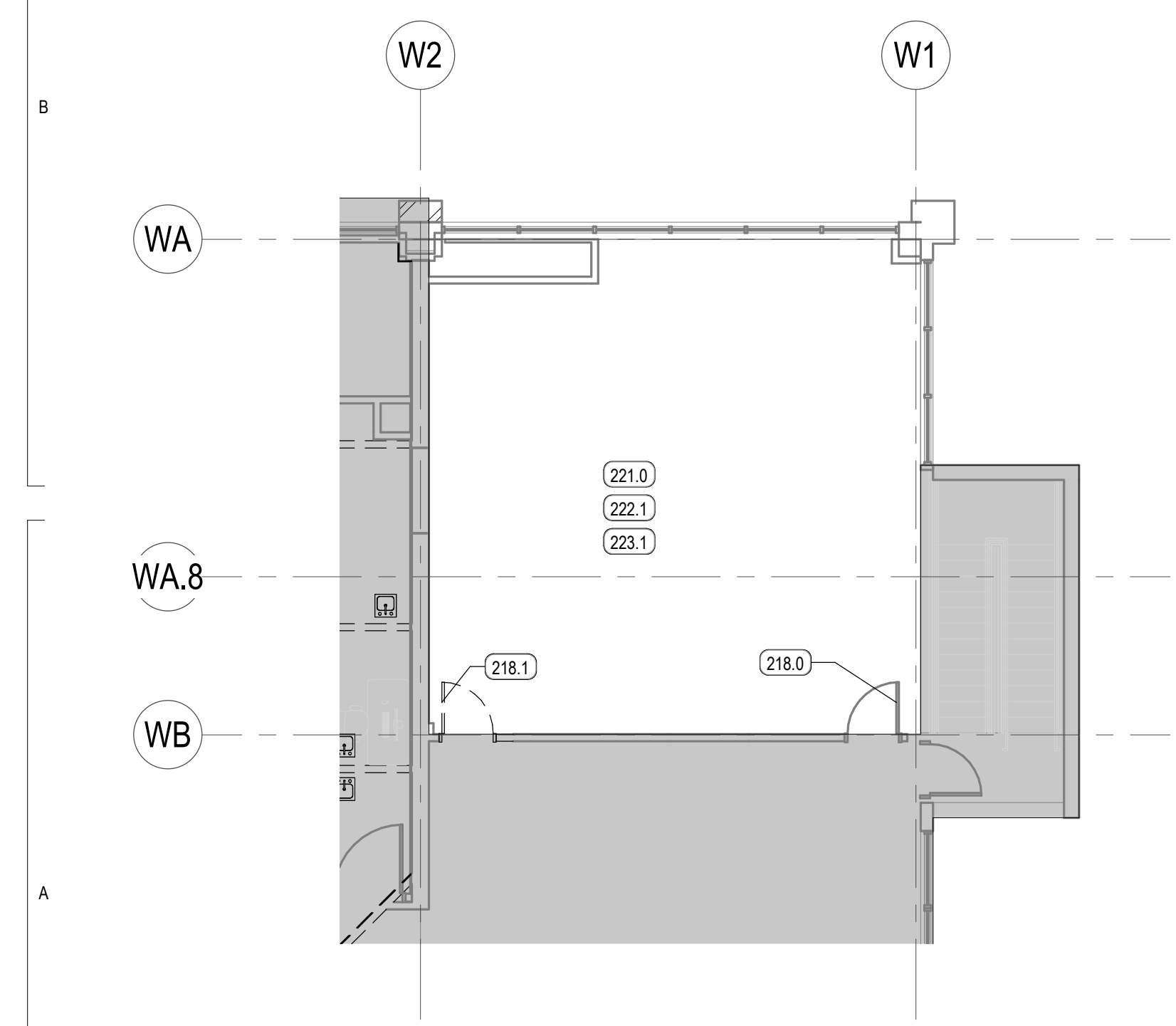
1. FIELD VERIFY DIMENSIONS AND CONDITIONS INCLUDING EXISTING UTILITIES PRIOR TO BIDDING. BRING DIFFERING DIMENSIONS AND CONDITIONS TO ARCHITECT'S ATTENTION PRIOR TO BIDDING.
2. A HAZARDOUS MATERIAL SURVEY IS AVAILABLE FROM THE OWNER. ABATEMENT MUST BE COMPLETED PRIOR TO DEMOLITION OF BUILDINGS OR BUILDING ELEMENTS.
3. PROVIDE DUSTPROOF ENCLOSURES AT PERIMETER OF CONSTRUCTION & DEMOLITION FOR PROTECTION OF ADJACENT SPACES.
4. COORDINATE MAINTENANCE OF FIRE EGRESS FOR OCCUPANTS IN EXISTING BUILDING WITH THE OWNER AND FIRE MARSHAL. PROVIDE NECESSARY TEMPORARY WALLS OR ENCLOSURES, EMERGENCY LIGHTS, ETC., FOR THE DURATION OF CONSTRUCTION.
5. BRING TO ARCHITECT'S ATTENTION EXISTING CONDITIONS THAT PRESENT ANY CODE VIOLATIONS, INCORRECT CONSTRUCTION OR SAFETY PROBLEMS.
6. MAINTAIN EXISTING FIRE RATINGS, AND ASSOCIATED FIRE PROTECTION SYSTEMS (I.E. FIRE SPRINKLERS AND FIRE ALARM SYSTEMS) THROUGHOUT CONSTRUCTION. COORDINATE ANY INTERRUPTION TO THESE SYSTEMS WITH THE OWNER AND FIRE MARSHAL. PROVIDE FIRE WATCH REQUIREMENTS ASSOCIATED WITH INTERRUPTIONS TO THESE SYSTEMS.
7. PROTECT EXISTING STRUCTURE, FINISHES, AND SITE ELEMENTS NOT SCHEDULED FOR DEMOLITION. RESTORE DAMAGED ITEMS TO THEIR ORIGINAL CONDITION OR REPLACE AT CONTRACTOR'S EXPENSE.
8. REMOVE BUILDINGS TO BE DEMOLISHED IN THEIR ENTIRETY, INCLUDING CONCRETE FOOTINGS AND FOUNDATIONS. DISPOSE PER CITY REQUIREMENTS.
9. REMOVE AND DISPOSE SELECTIVE DEMOLITION MATERIAL PER CITY REQUIREMENTS.
10. SALVAGE MATERIAL WHERE INDICATED. REMOVE ITEMS FROM CURRENT LOCATIONS & PREPARE FOR TRANSPORT BY THE OWNER.

**GENERAL PLAN DEMOLITION NOTES**

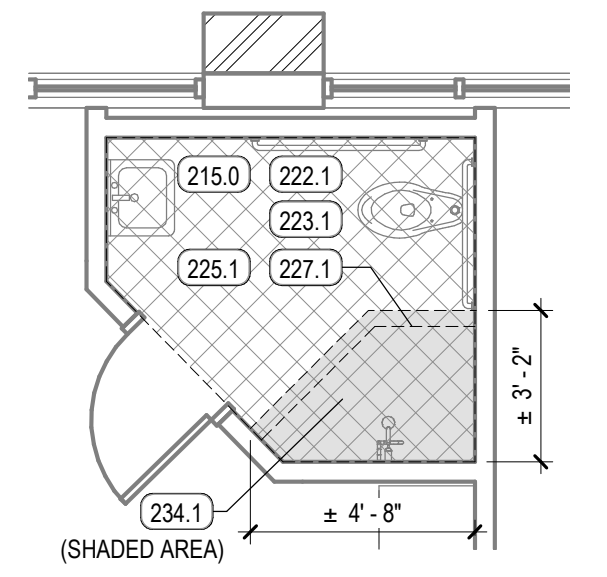
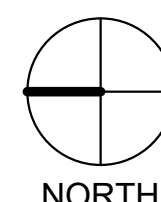
1. REFER TO CIVIL, STRUCTURAL, MECHANICAL AND/OR ELECTRICAL PLANS FOR REQUIRED ADDITIONAL DEMOLITION
2. MAINTAIN EXISTING FIRE RATINGS THROUGHOUT CONSTRUCTION
3. DO NOT DISTURB EXISTING FIRE RATED ELEMENTS INCLUDING FIREPROOFING, PATCH/REPAIR, DAMAGED OR DISTURBED ITEMS.
4. AFTER DEMOLITION, PRIOR TO FINISH, PATCH AND REPAIR EXISTING WALLS TO PROVIDE SMOOTH SURFACE SUITABLE FOR PAINTING OR WALL COVERINGS.
5. PATCH & LEVEL EXISTING CONCRETE SLABS FOR NEW FINISHES WITH FLOOR LEVELING COMPOUND.
6. FIELD VERIFY AND COORDINATE SAW CUTTING OF THE CONCRETE FLOOR SLAB WITH PLUMBING AND ELECTRICAL.
7. REPLACE SLAB AND TRENCH BY COMPACTING CLEAN GRAVEL IN 8 INCH LIFTS. DRILL #4 EPOXY-COATED REBAR INTO EXISTING SLAB @ 12 INCH OC. POUR SLAB TO PROVIDE A SMOOTH EVEN FLOOR.
8. WHERE ELECTRICAL CIRCUIT CONTINUITY IS INTERRUPTED, BUT MUST BE MAINTAINED, MAKE NECESSARY MODIFICATIONS TO MAINTAIN CIRCUIT INTEGRITY.
9. REMOVE ELECTRICAL BOXES BEHIND RELOCATED MILLWORK AND CAP AS REQUIRED.
10. CAP EXISTING DUCT WORK FOR DUST CONTROL.

**DEMOLITION LEGEND**

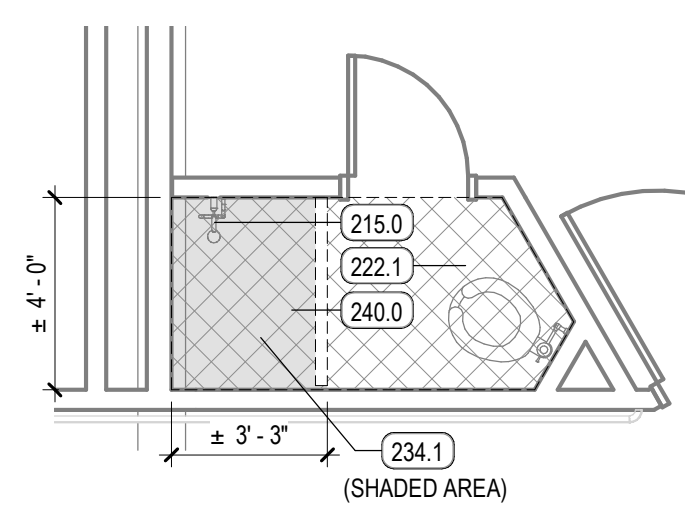
- HALF-TONE LINE DENOTES ITEMS TO REMAIN
- - - DASHED LINE DENOTES ITEMS TO BE DEMOLISHED
- AREA TO REMAIN UNDISTURBED DURING CONSTRUCTION
- ▨ AREA TO BE DEMOLISHED (PER PLANS)



**A1 LEVEL 2 - DEMOLITION PLAN**  
SCALE: 1/8" = 1'-0"



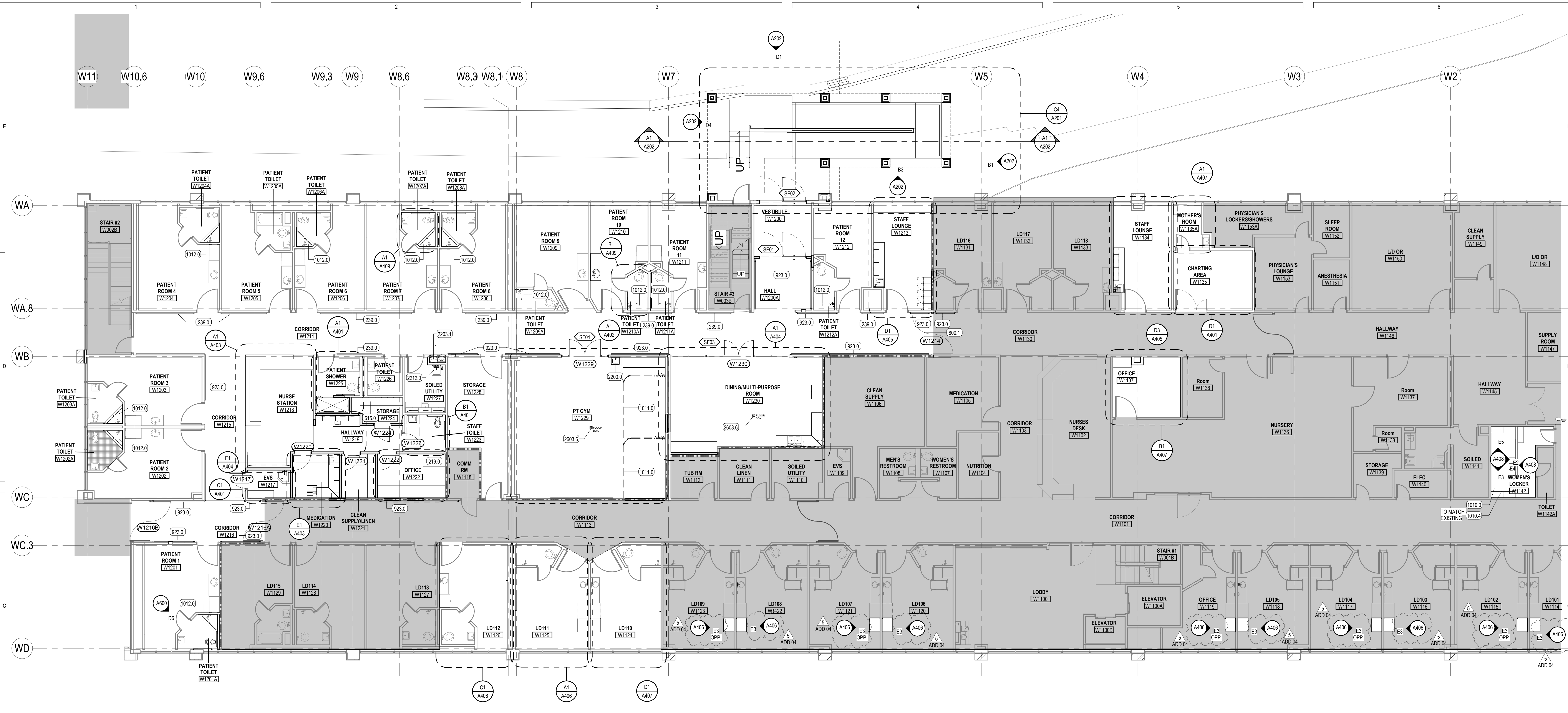
**A3 LEVEL 1 - ENLARGED PATIENT TOILET TYPE 1 DEMOLITION PLAN, TYP.**  
SCALE: 1/4" = 1'-0"



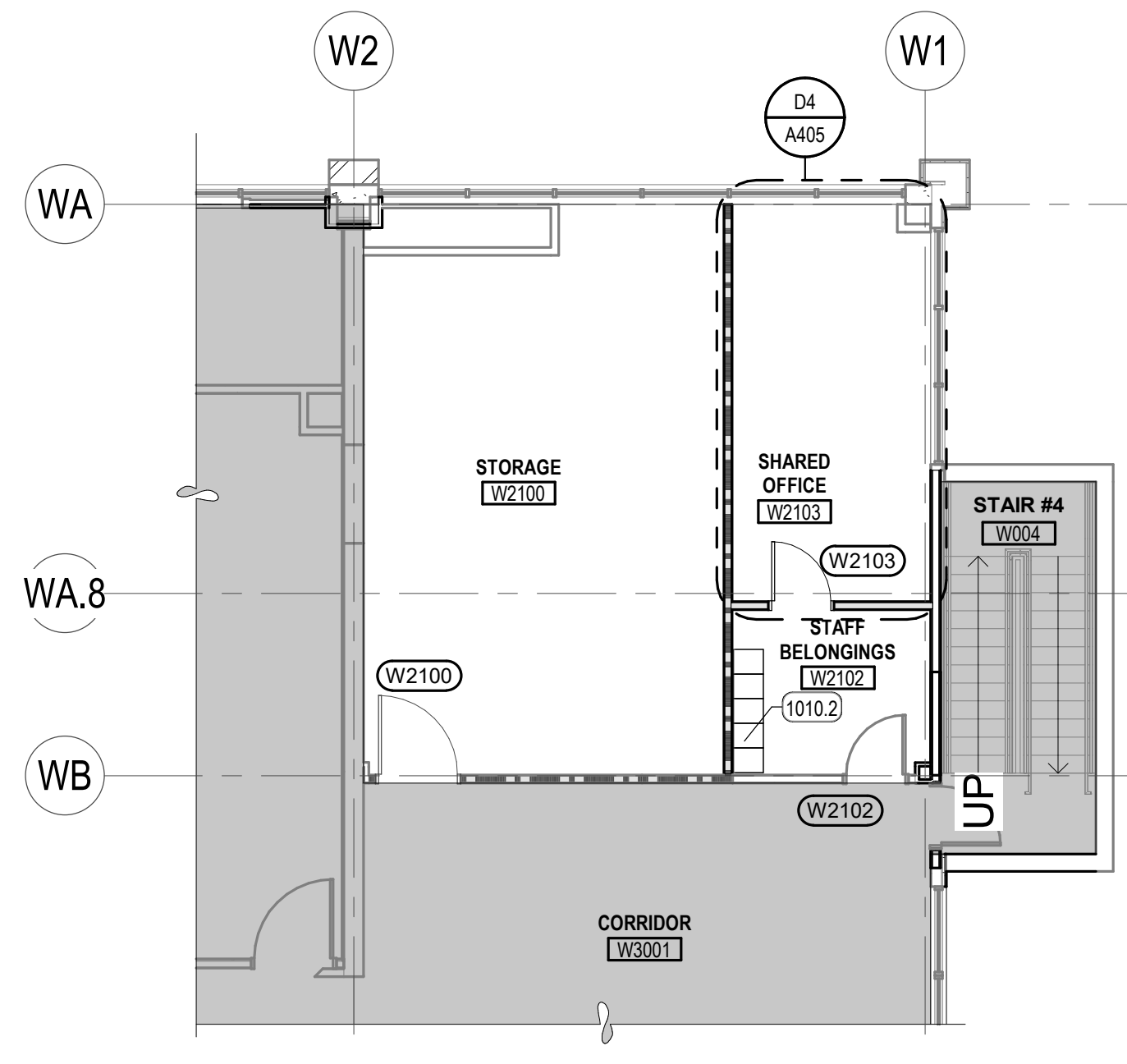
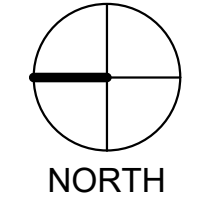
**A4 LEVEL 1 - ENLARGED PATIENT TOILET TYPE 2 DEMOLITION PLAN, TYP.**  
SCALE: 1/4" = 1'-0"

REV	DATE	DESCRIPTION
1	01.11.21	ADD 01
4	01.22.21	ADD 03
5	01.25.21	ADD 04

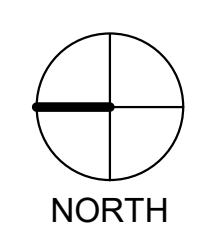
VCBO NUMBER: 19740.00  
CLIENT NUMBER:  
DATE: 15 DECEMBER 2020



**C3 LEVEL 1 - ANNOTATED PLAN**  
SCALE: 1/8" = 1'-0"



**A2 LEVEL 2 - ANNOTATED PLAN**  
SCALE: 1/8" = 1'-0"



**PLAN NOTES**

- WHERE FLOOR DRAINS ARE INSTALLED THE FLOOR IS TO SLOPE TO THE DRAIN. THE MAXIMUM SLOPE IS NOT TO EXCEED 2% WHILE THE MINIMUM SLOPE IS NOT TO BE LESS THAN 1%.
- SEE SHEET **A572** FOR TYPICAL FLOORING TRANSITION DETAILS.
- THE CONTRACTOR IS TO ENSURE THAT BETWEEN ANY FINISH FLOOR ELEVATION TO 36" A.F.F. ALL GUARDRAILS ARE TO BE CONSTRUCTED AND INSTALLED SO THAT A 4 3/8" SPHERE WILL NOT PASS BETWEEN ANY TWO ADJACENT GUARDRAIL COMPONENTS OR BETWEEN THE EDGE OF A GUARDRAIL AND ALL ADJACENT BUILDING ELEMENT SUCH AS A WALL OR FLOOR. AN 4 3/8" DIAMETER SPHERE IS NOT TO PASS BETWEEN THE ABOVE MENTIONED COMPONENTS AND ELEMENTS FROM AN ELEVATION 36" A.F.F. AND HIGHER.

**KEYED NOTES**

- 219.0 EXISTING MILLWORK TO REMAIN, PROTECT IN PLACE
- 239.0 EXISTING HIGH IMPACT PVC HANDRAIL TO REMAIN, PROTECT IN PLACE
- 615.0 ADJUSTABLE SHELVING
- 800.1 EXISTING & SALVAGED DOOR AND FRAME RELOCATED TO THIS LOCATION
- 923.0 HIGH IMPACT PVC HANDRAIL
- 1010.0 LOCKERS, METAL/PLASTIC
- 1010.2 LOCKERS, DOUBLE TIER
- 1010.4 LOCKER, ADA ACCESSIBLE
- 1011.0 PRIVACY CURTAIN, CEILING MOUNTED
- 1012.0 INTEGRATED SOLID SURFACE SHOWER PAD WITH SOLID SURFACE WALLS FABRICATION, RECESS SLAB BY 1" IN SHOWER PAN AREA. COORDINATE WITH PLUMBING DRAWINGS FOR DRAIN REQUIREMENTS AND LOCATION
- 2200.0 SINK + FAUCET
- 2203.1 EXISTING & SALVAGED DRINKING FOUNTAIN REINSTALLED AT THIS LOCATION
- 2212.0 CLINICAL SERVICE SINK (HOPPER)
- 2603.6 ELECTRICAL FLOOR BOX, SEE ELECTRICAL

REV	DATE	DESCRIPTION
1	01.11.21	ADD 01
2	01.20.21	CITY REVIEW
3	01.20.21	UDOH REVIEW
4	01.22.21	ADD 03
5	01.25.21	ADD 04

VCBO NUMBER: 19740.00  
CLIENT NUMBER:  
DATE: 15 DECEMBER 2020

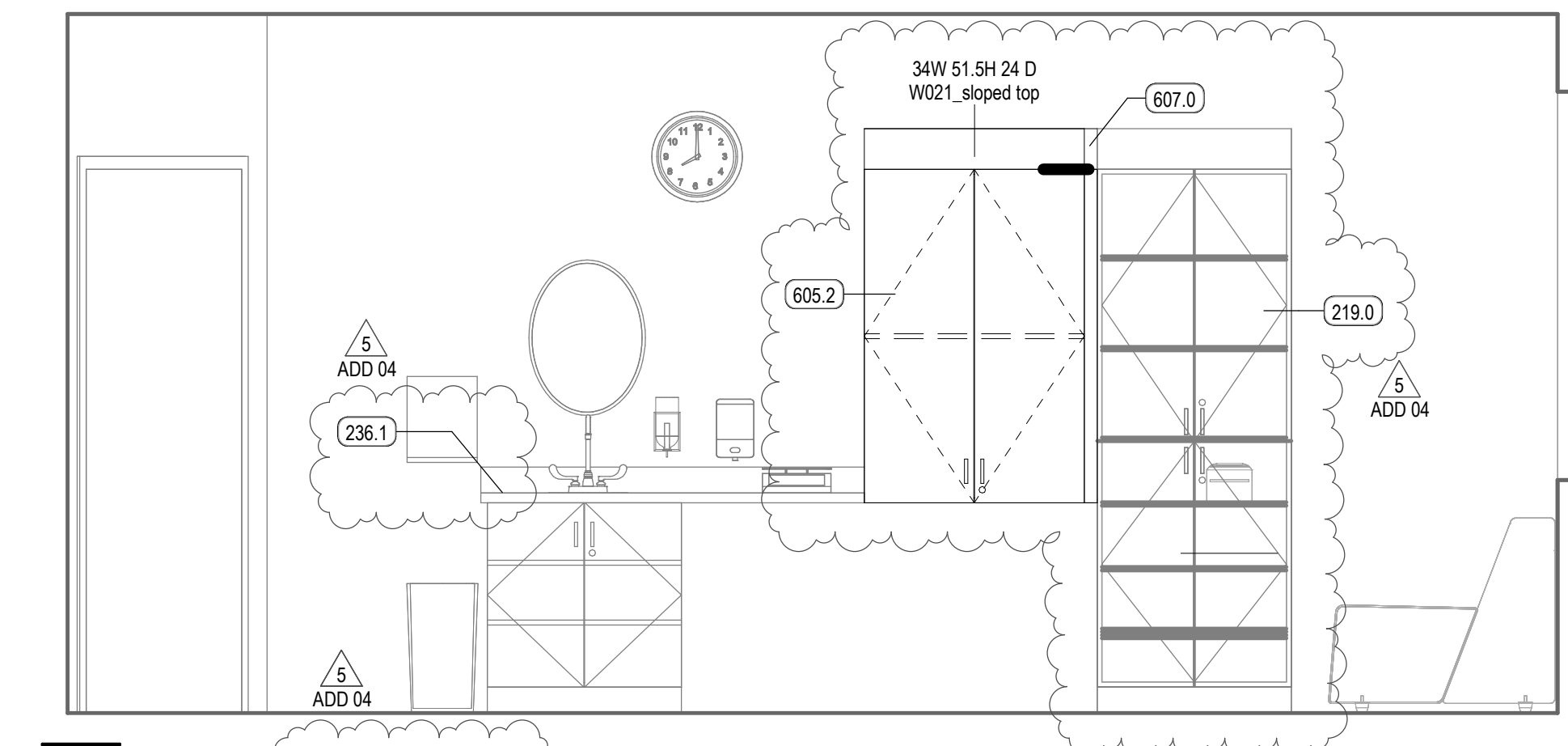
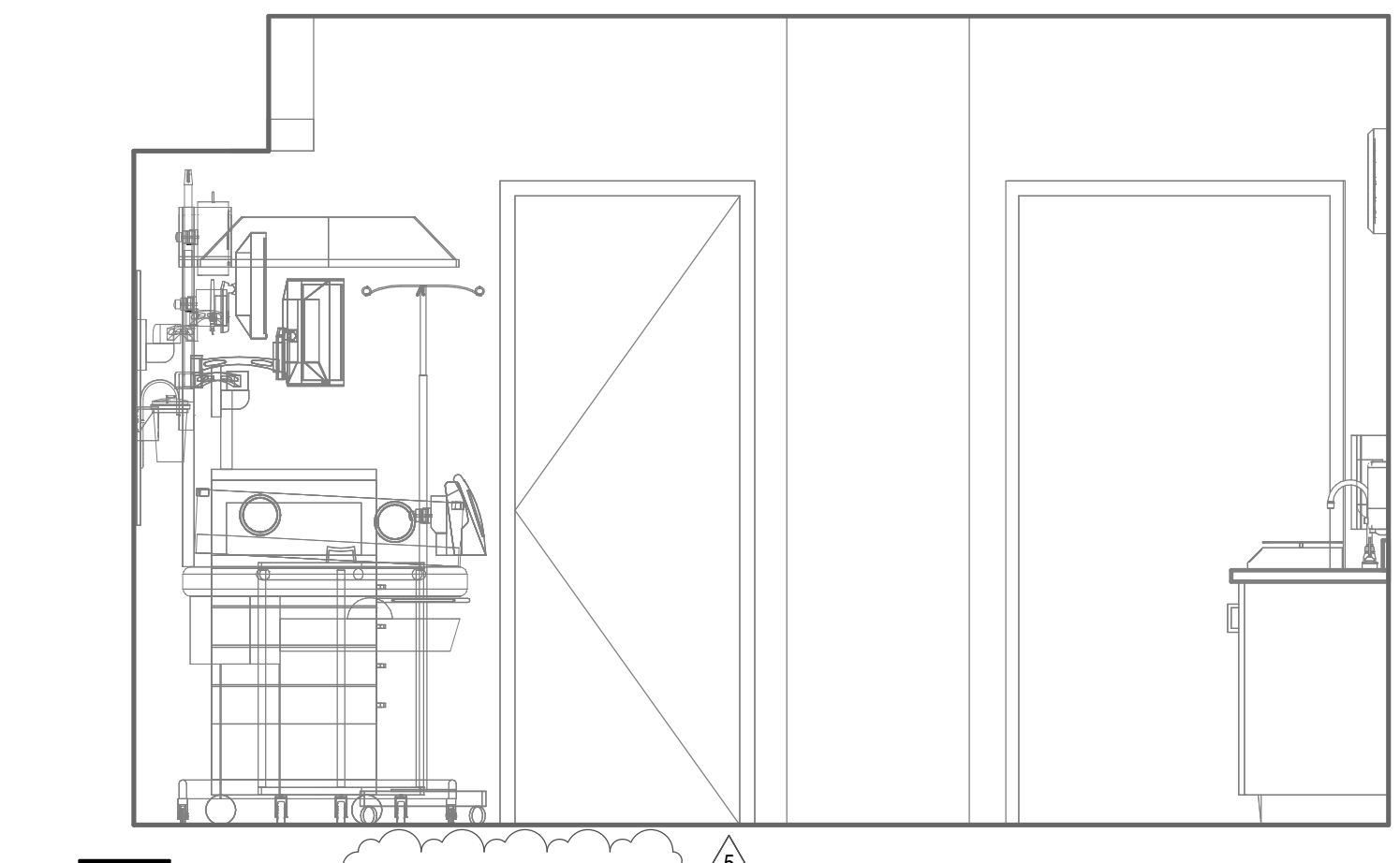
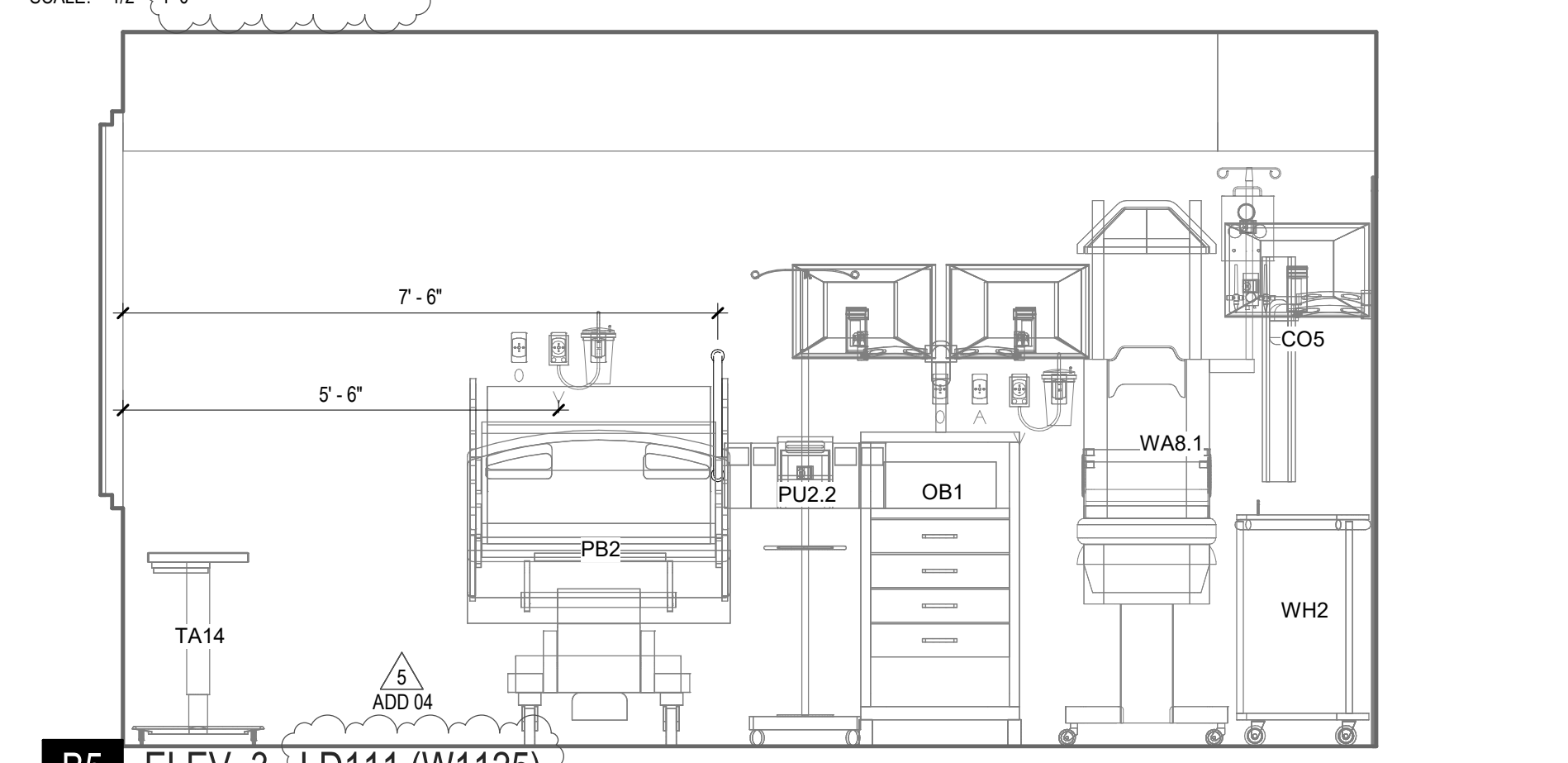
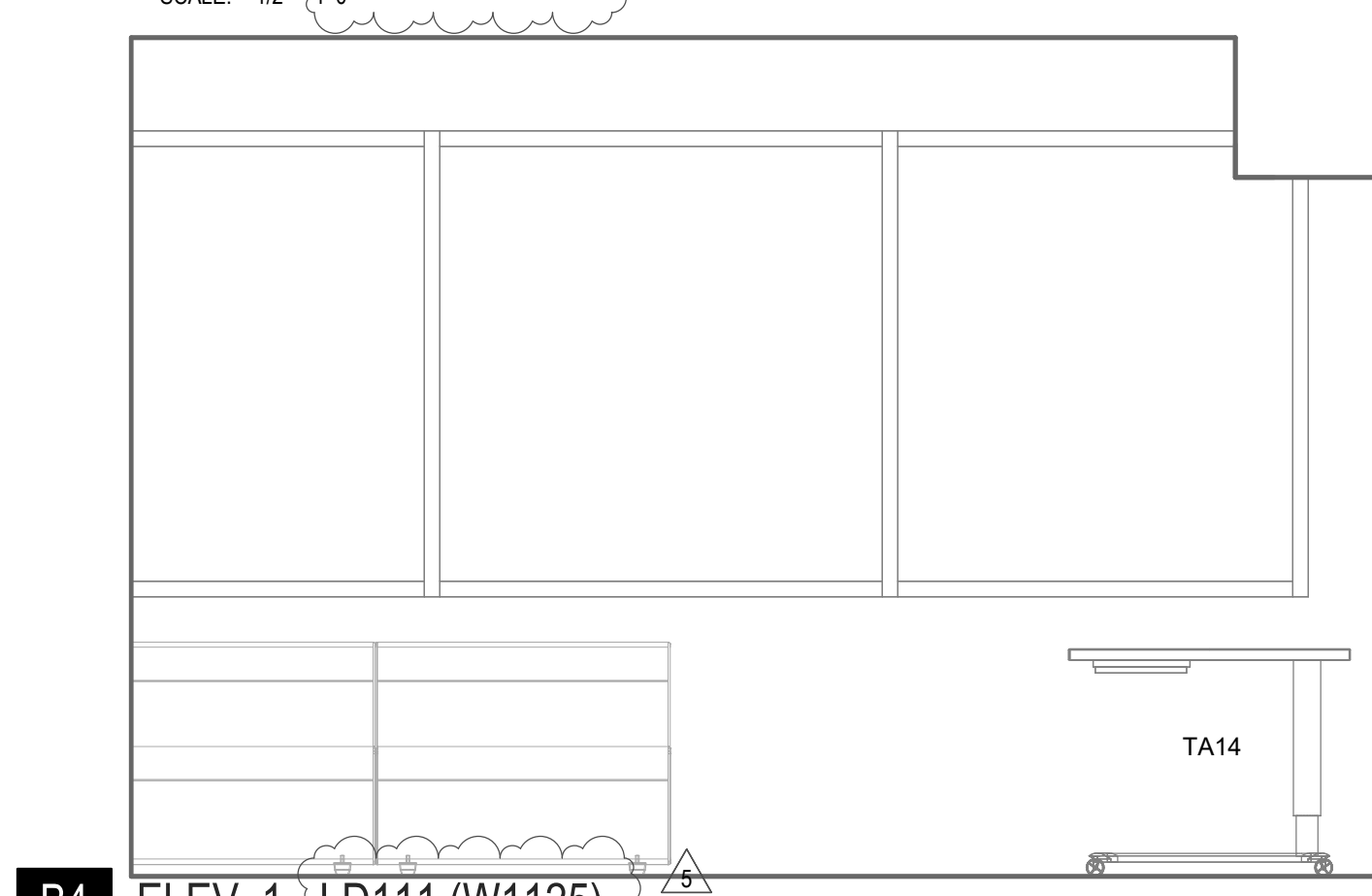
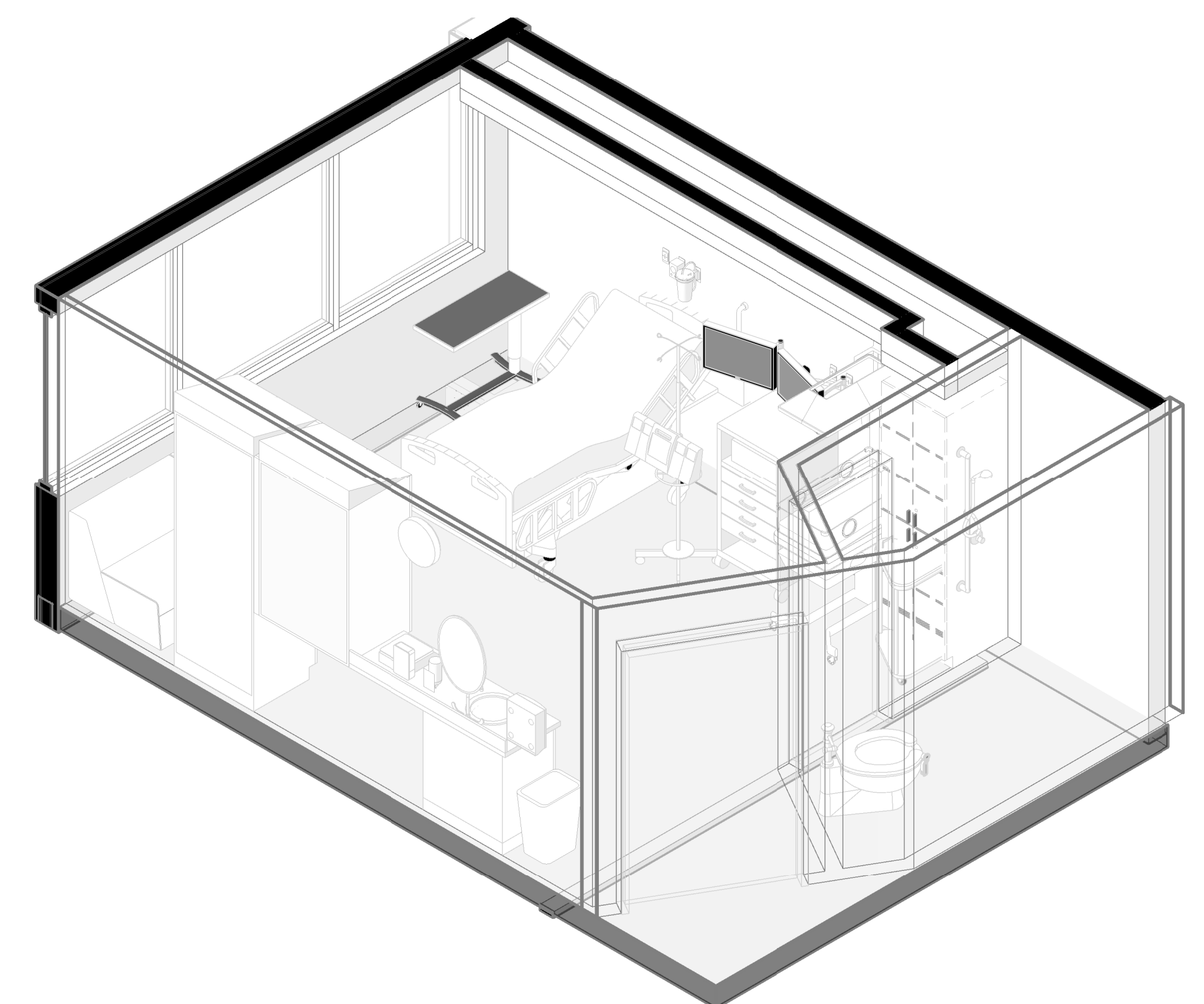
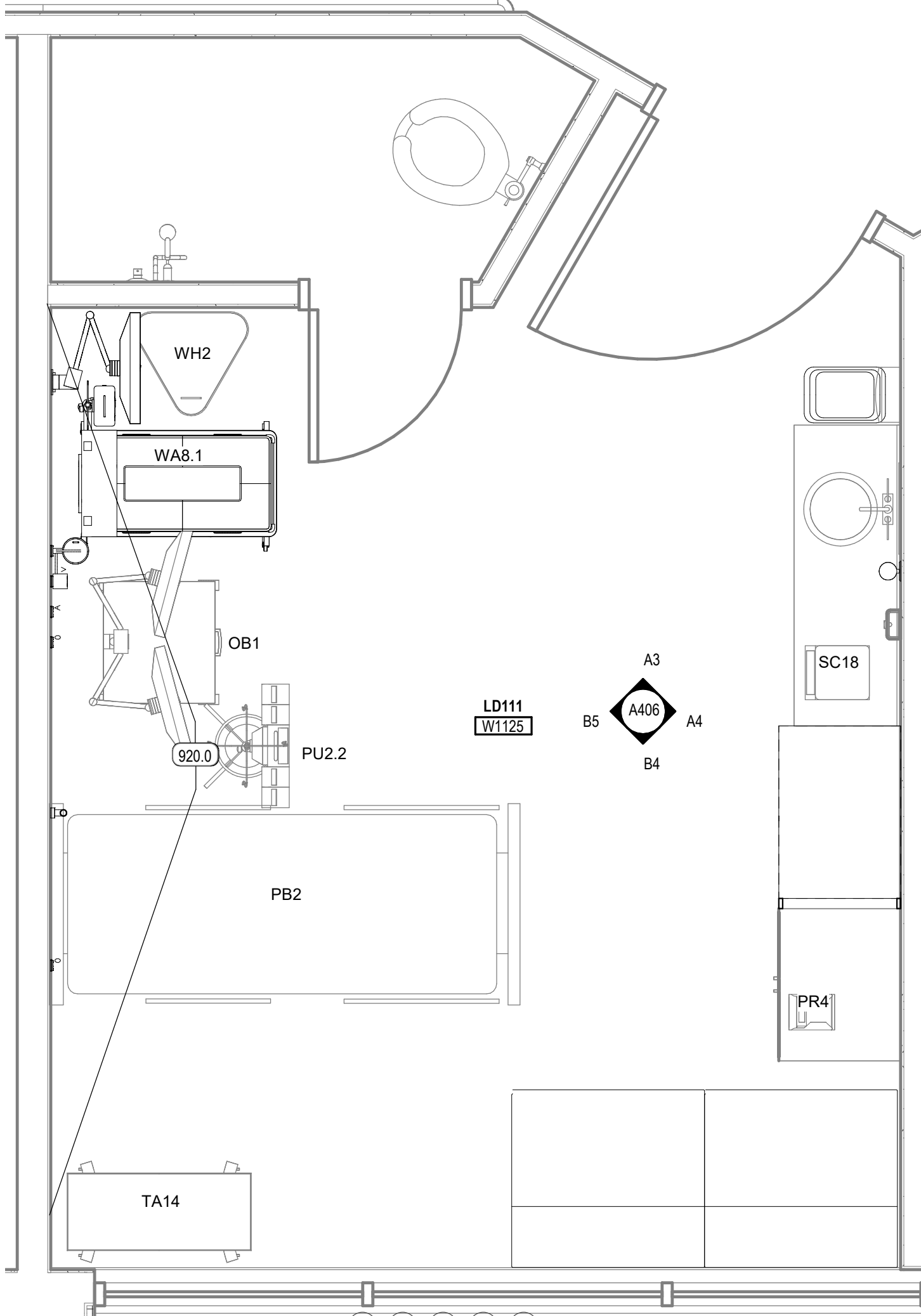
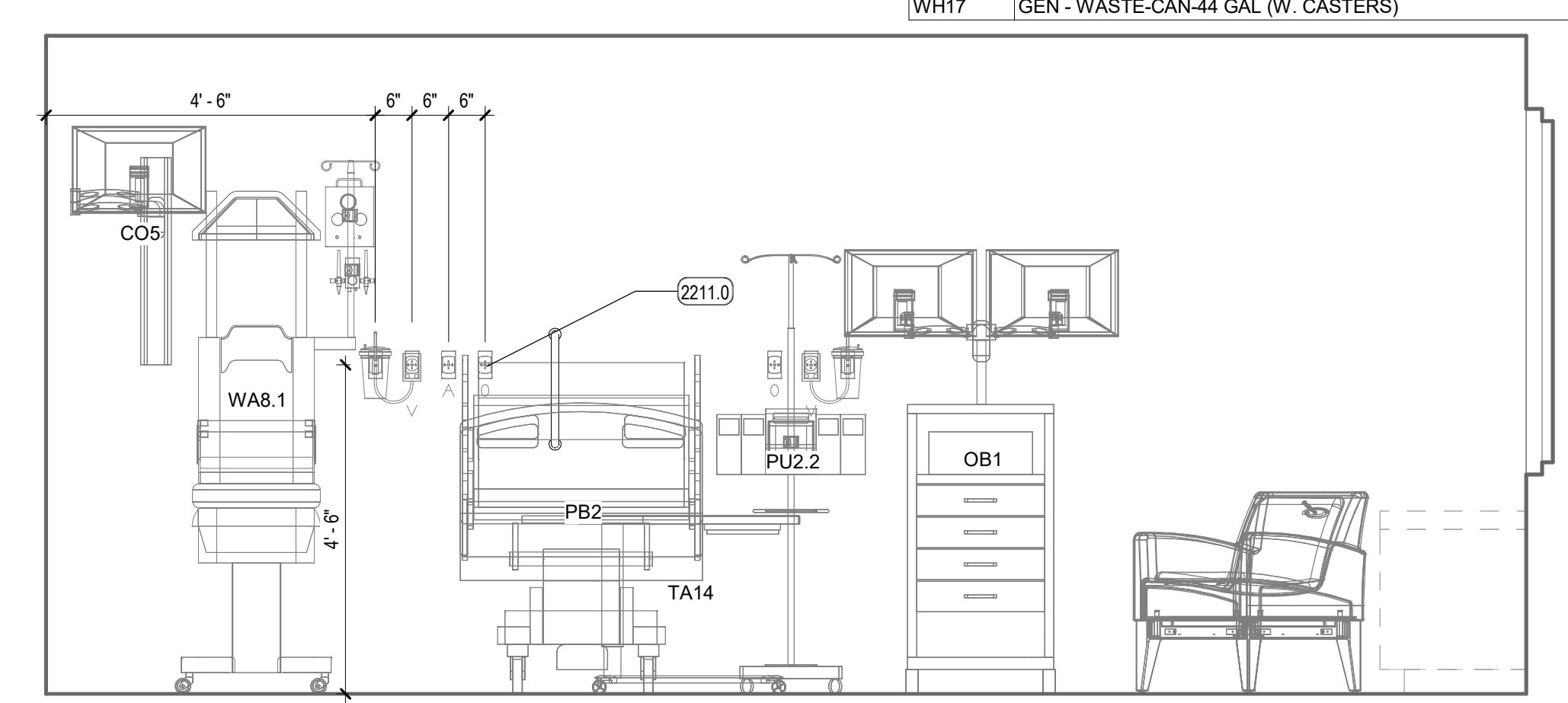
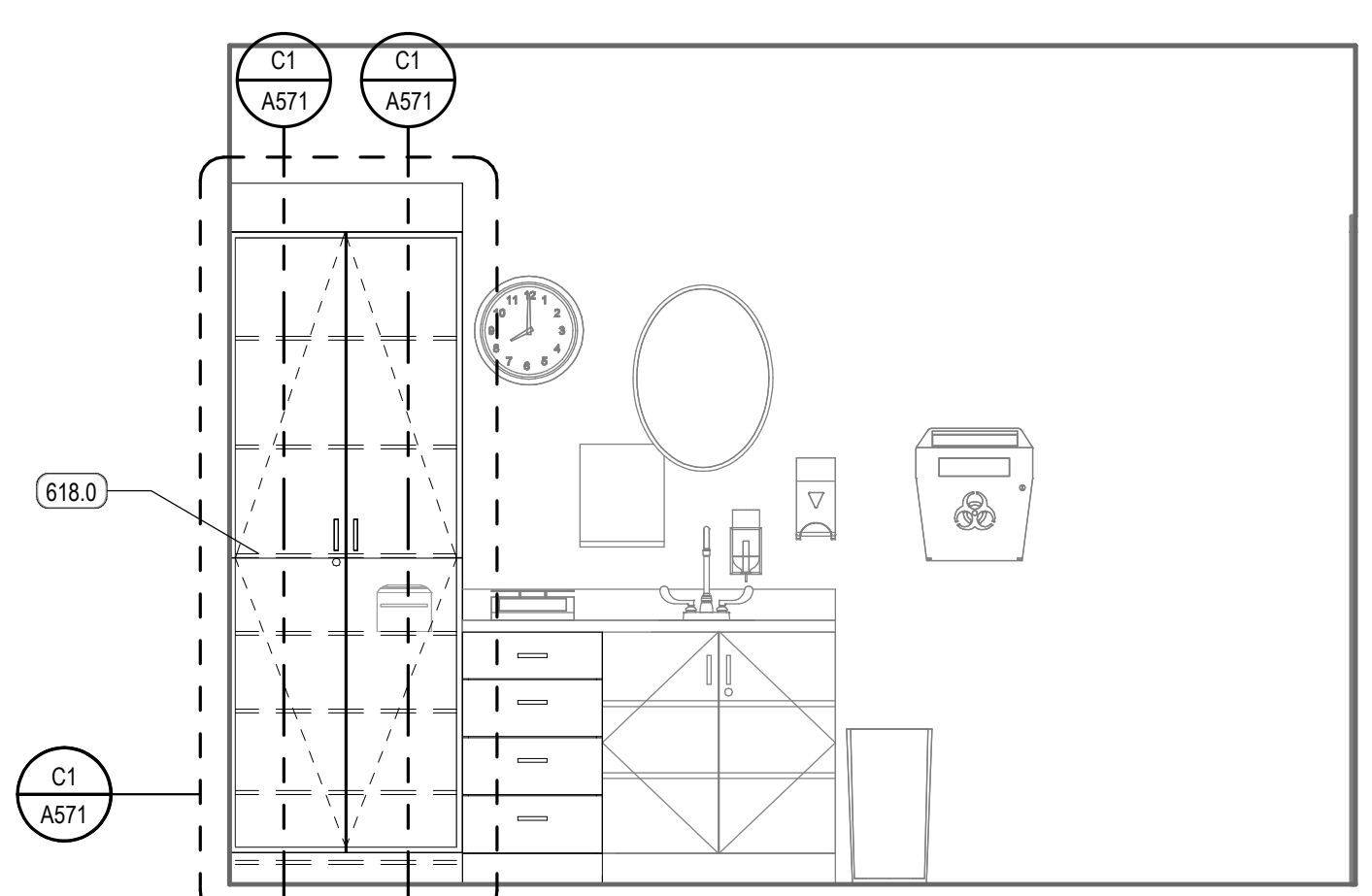
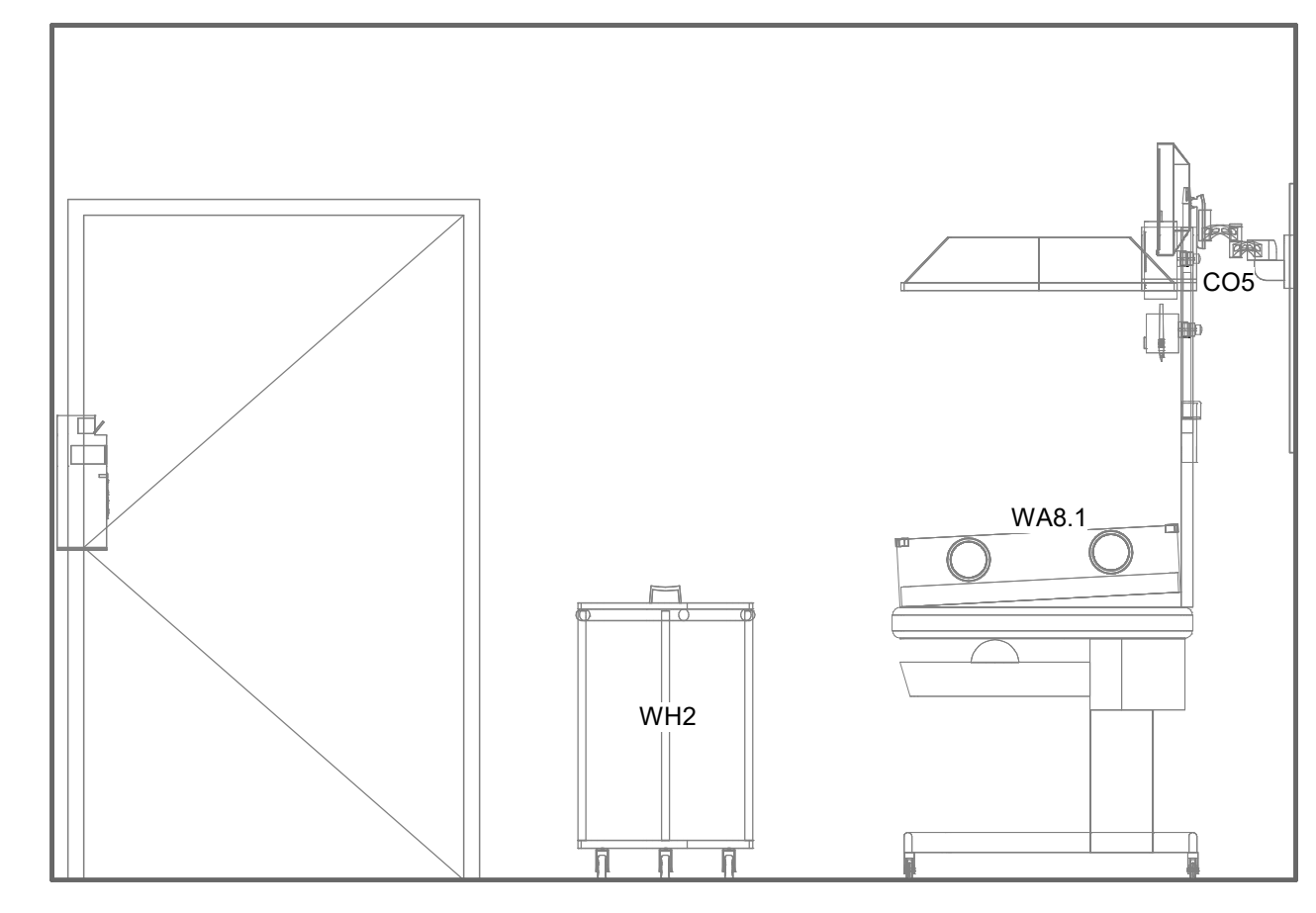
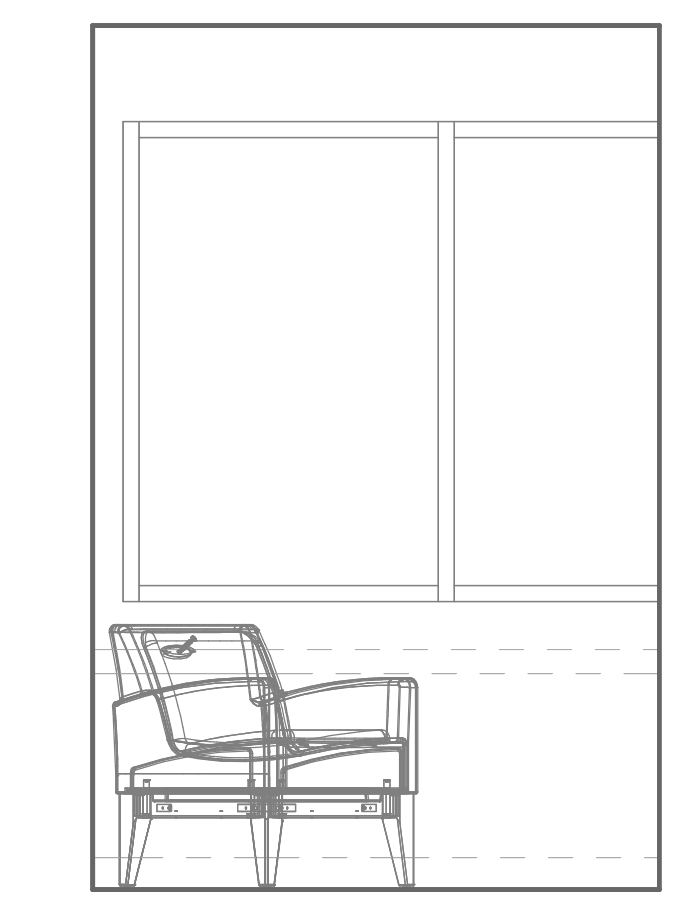
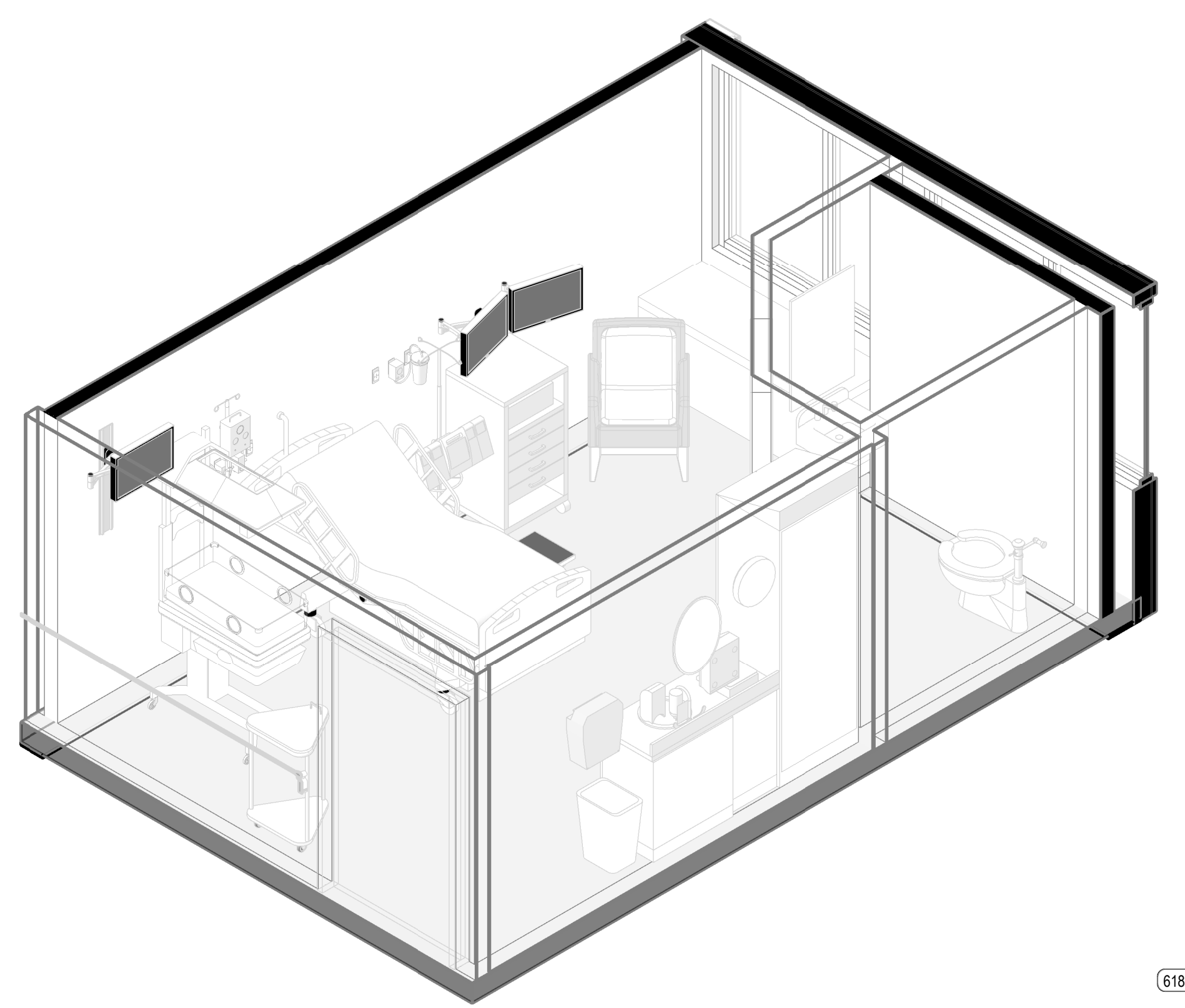
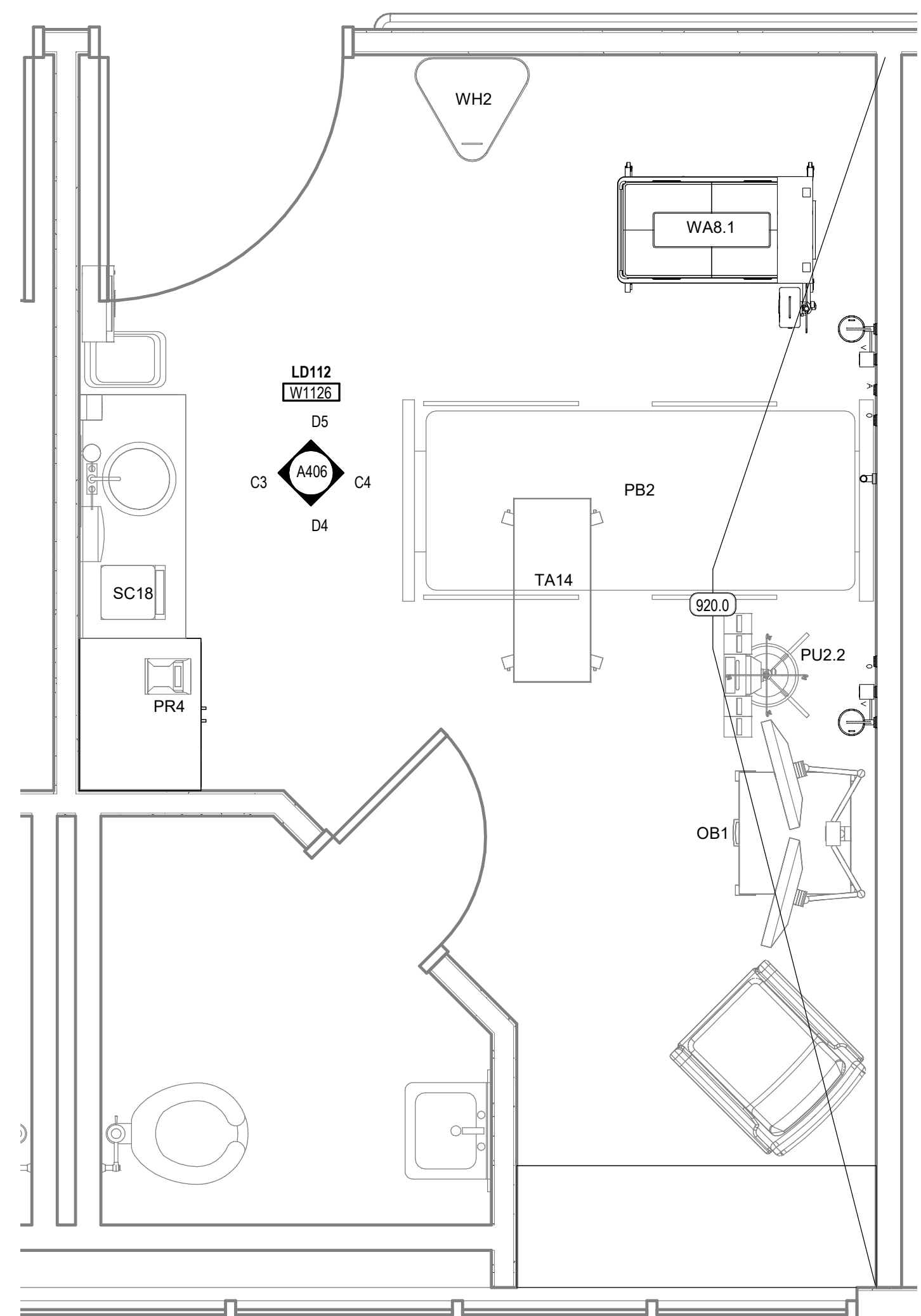
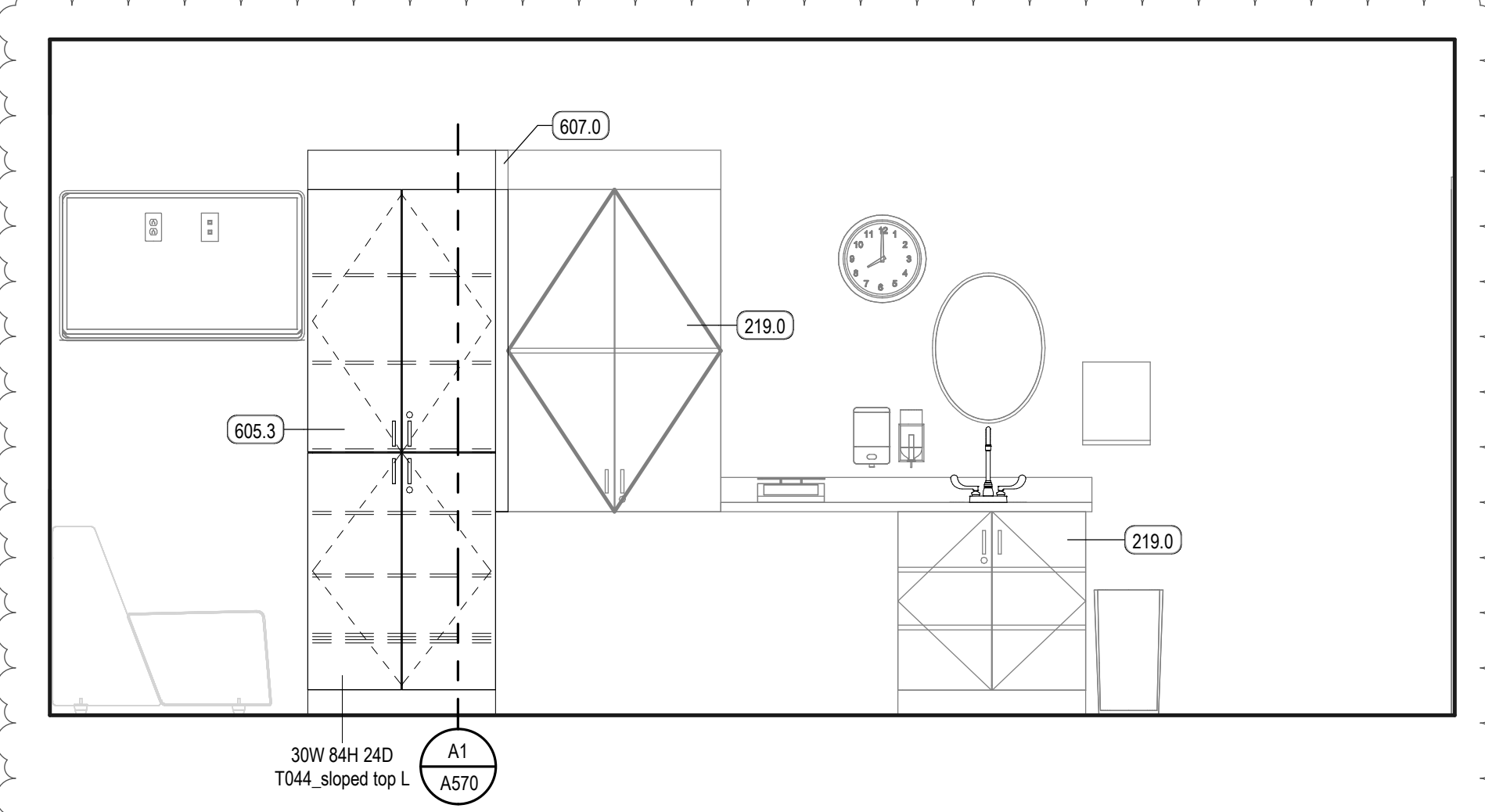
**EQUIPMENT LEGEND**

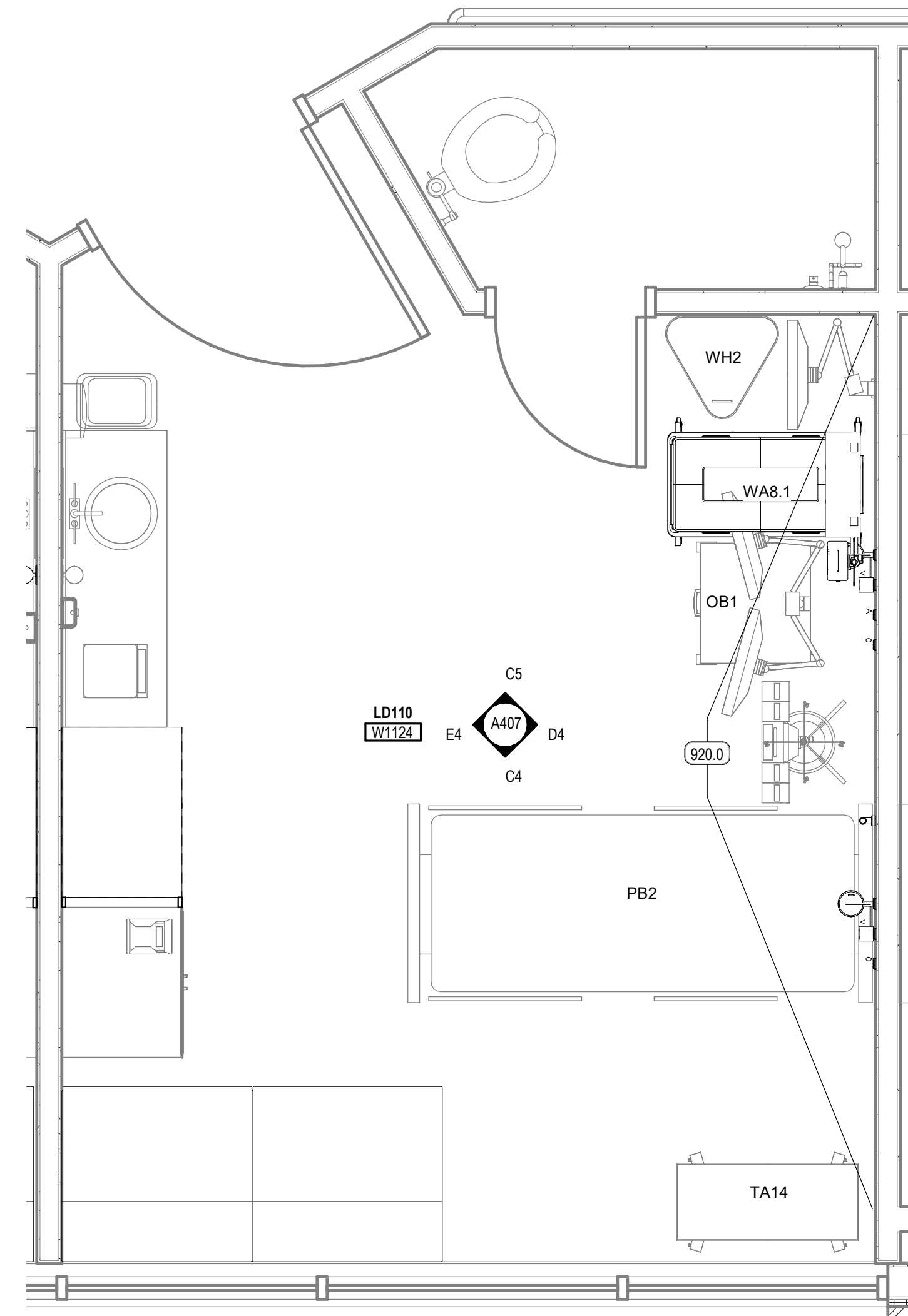
EQUIPMENT CATEGORIES - ABBREVIATIONS

CODE	DESCRIPTION
MED	MEDICAL
GYM	GYMNASIUM
COM	COMMERCIAL
GEN	GENERAL
OFF	OFFICE
FUR	FURNITURE (NIC)
A	MED - MED GAS-WALL-AIR 2
CA1	MED - CART-CRASH
CA4	MED - CART-EXAM + PROCEDURE
CA10.2	GEN - CART-STORAGE-FULL HEIGHT 24 X 48
CA19	GEN - CART-UTILITY-PARTIAL HEIGHT
CB5	MED - CABINET-NARCOTIC-FULL HEIGHT-SINGLE UNIT
CK2	GEN - CLOCK-WALL-ANALOG-WIRELESS
CO1	OFF - COMPUTER-WALL STATION
CO3	GEN - COMPUTER WORKSTATION-MOBILE
CO4	GEN - COMPUTER WORKSTATION-WALL MOUNTED
CO6	GEN - COMPUTER MONITOR-WORKSTATION-WALL MOUNTED
D11	GEN - DISPENSER-PAPER TOWEL
D14	MED - DISPENSER-HAND SANITIZER
D17	MED - DISPENSER-GLOVE-TRIPLE
D13	GEN - WINDOW PASS-THROUGH (PHARMACY)
DM5	GEN - DISPENSER-WATER-FREESTANDING (HOT / COLD)
DW1	COM - DISHWASHER-RESIDENTIAL
F55	COM - FOOD SERVICE-TOASTER
FS11	COM - FOOD SERVICE-COFFEE BREWER (12 CUP)
GY1	GYM - TREADMILL
GY7	GYM - UPPER BODY EXERCISER
GY16	GYM - NUSTEP MACHINE
GY33	GYM - PARALLEL BARS
GY63	GYM - STAIRCASE-EXERCISER
HD3	MED - BIOLOGICAL SAFETY CABINET + BENCHTOP-60"
HD5	MED - HOOD-LAMINAR FLOW + WORKSTATION
IM1	COM - ICE MACHINE-COUNTER
LF1.2	MED - LIFT-PATIENT-CEILING MOUNTED-CURVED RAIL
LF2.2	MED - LIFT-PATIENT-CEILING MOUNTED-TRAVERSE (STANDARD)
LF2.3	MED - LIFT-PATIENT-CEILING MOUNTED-TRAVERSE (BARIATRIC)
LF3.2	MED - LIFTER-PATIENT-MOBILE
MU1	OFF - MULTIFUNCTION-FREESTANDING
MU3	OFF - MULTIFUNCTION-DESKTOP
MW1	COM - MICROWAVE-COUNTER
MW2	COM - MICROWAVE-COUNTER
O	MED - MED GAS-WALL-OXYGEN 2
OB1	MED - CART-INFANT MONITOR
PB2	MED - BED-PATIENT-TRANSPORT
PR4	OFF - PRINTER-LABEL
PU2.2	MED - STAND - CARE INFUSION PUMP WITH MED INFUSION PUMP
RE3	COM - REFRIGERATOR-UNDERCOUNTER
RE5	COM - REFRIGERATOR-SINGLE-FULL HEIGHT-RESIDENTIAL
RE5.1	COM - REFRIGERATOR-SINGLE-FULL HEIGHT-RESIDENTIAL
RE14	COM - REFRIGERATOR-FULL HEIGHT-DOUBLE DOOR
RE19	MED - REFRIGERATOR-FULL HEIGHT-LAB-SINGLE DOOR
RE22	COM - FREEZER-SINGLE DOOR-FULL HEIGHT-LAB RATED
RE32	SE - UNDER COUNTER REFRIGERATOR ADA - NIC
RG1	COM - RANGE-ELECTRIC W. OVEN
SC11	MED - SCALE-WHEELCHAIR + STAND ON-PORTABLE
SC18	MED - SCALE-DIGITAL-LAB-PORTABLE
SL5	MED - BENCH-GOWNING (PHARMACY)
TA14	MED - TABLE-OVERBED-PATIENT
TA27	MED - PLINTH-TREATMENT (7' X 7')
TV2	GEN - TELEVISION-WALL MOUNTED (42")
TV3	GEN - TELEVISION-WALL MOUNTED (55")
VISC	MED - MED GAS-WALL-VACUUM-SUCTION-CANISTER
WA8.1	MED - WARMER-INFANT-WITH AIRBLENDER-RESUSCITATION NEOPUFF SYSTEMS
WC1	GEN - WHEELCHAIR
WH2	MED - HAMPER-LINEN
WH17	GEN - WASTE-CAN-44 GAL (W. CASTERS)

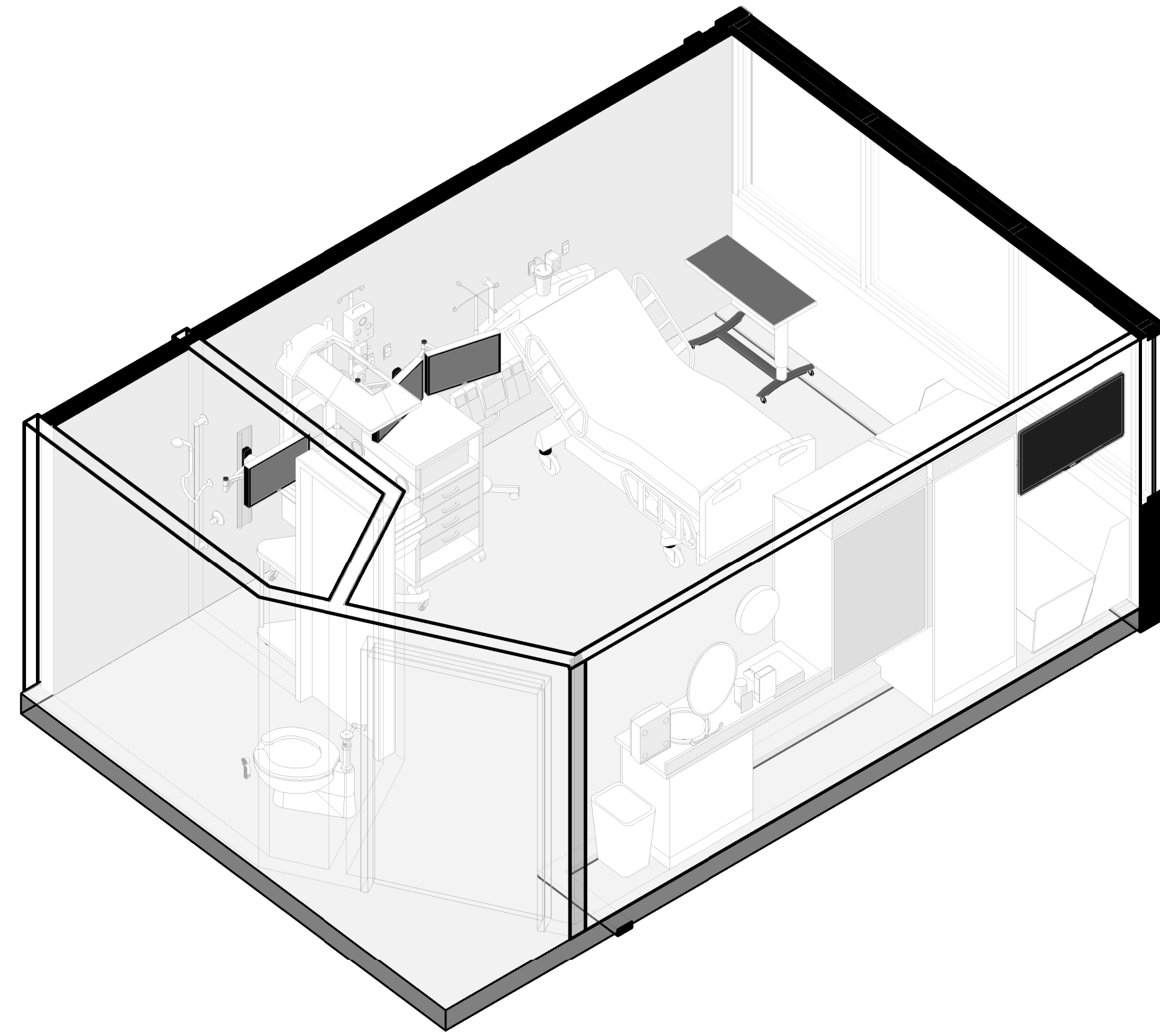
**KEYED NOTES**

- 219.0 EXISTING MILLWORK TO REMAIN. PROTECT IN PLACE
- 236.1 EXISTING SOLID SURFACE COUNTERTOP. REMOVE, MODIFY AND REINSTALL. ADD INTEGRAL SOLID SURFACE SIDE SPLASH AGAINST NEW CABINET TO MATCH SOLID SURFACE COUNTERTOPS IN EXISTING ROOMS.
- 605.2 MILLWORK WALL MOUNTED UPPER CABINET WITH BLOCKING
- 605.3 MILLWORK WALL MOUNTED TALL CABINET WITH BLOCKING
- 607.0 MILLWORK FILLER PANEL
- 618.0 MILLWORK MODIFY EXISTING TALL CABINET. SEE PLANS
- 920.0 SCHEDULED PAINT
- 2211.0 MED GASES

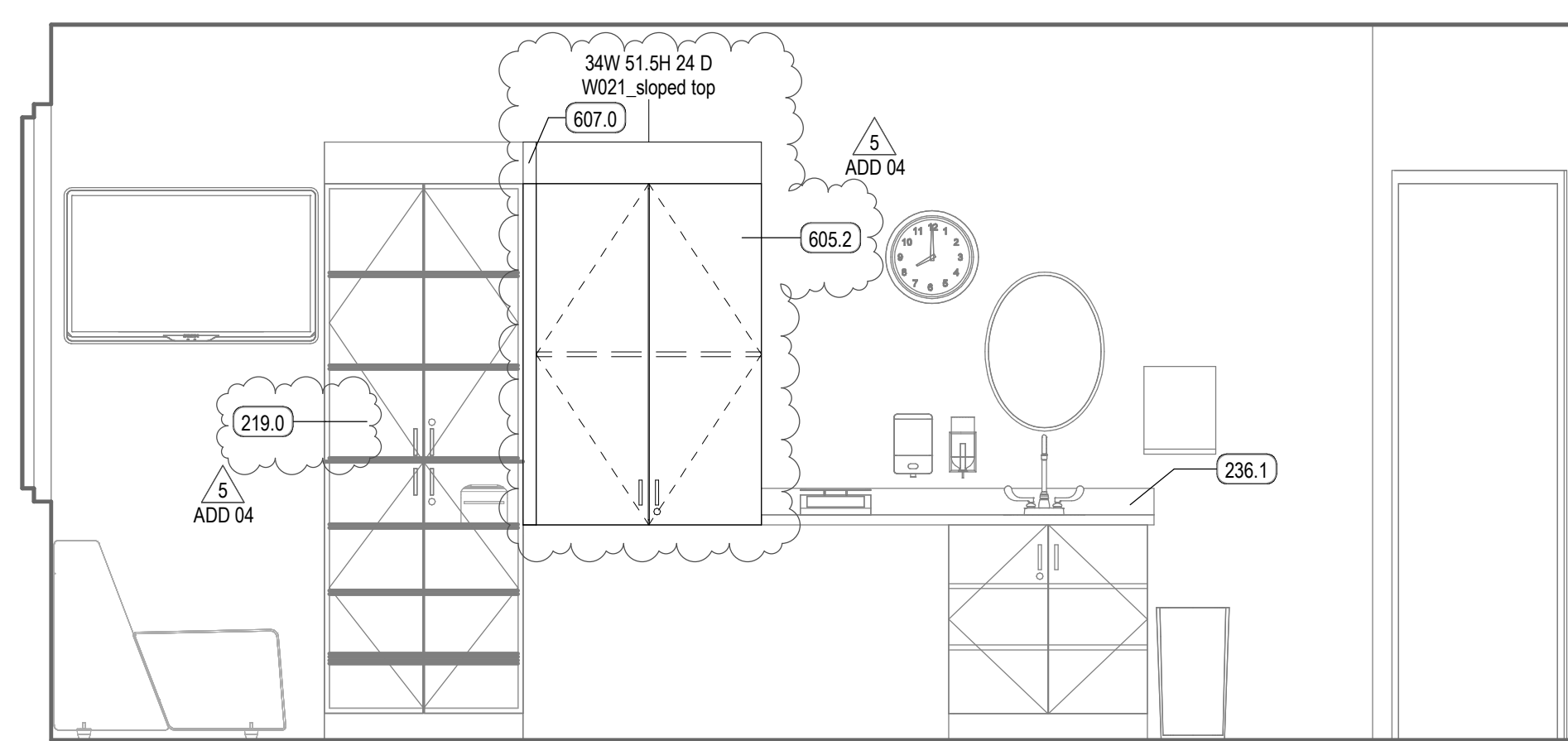




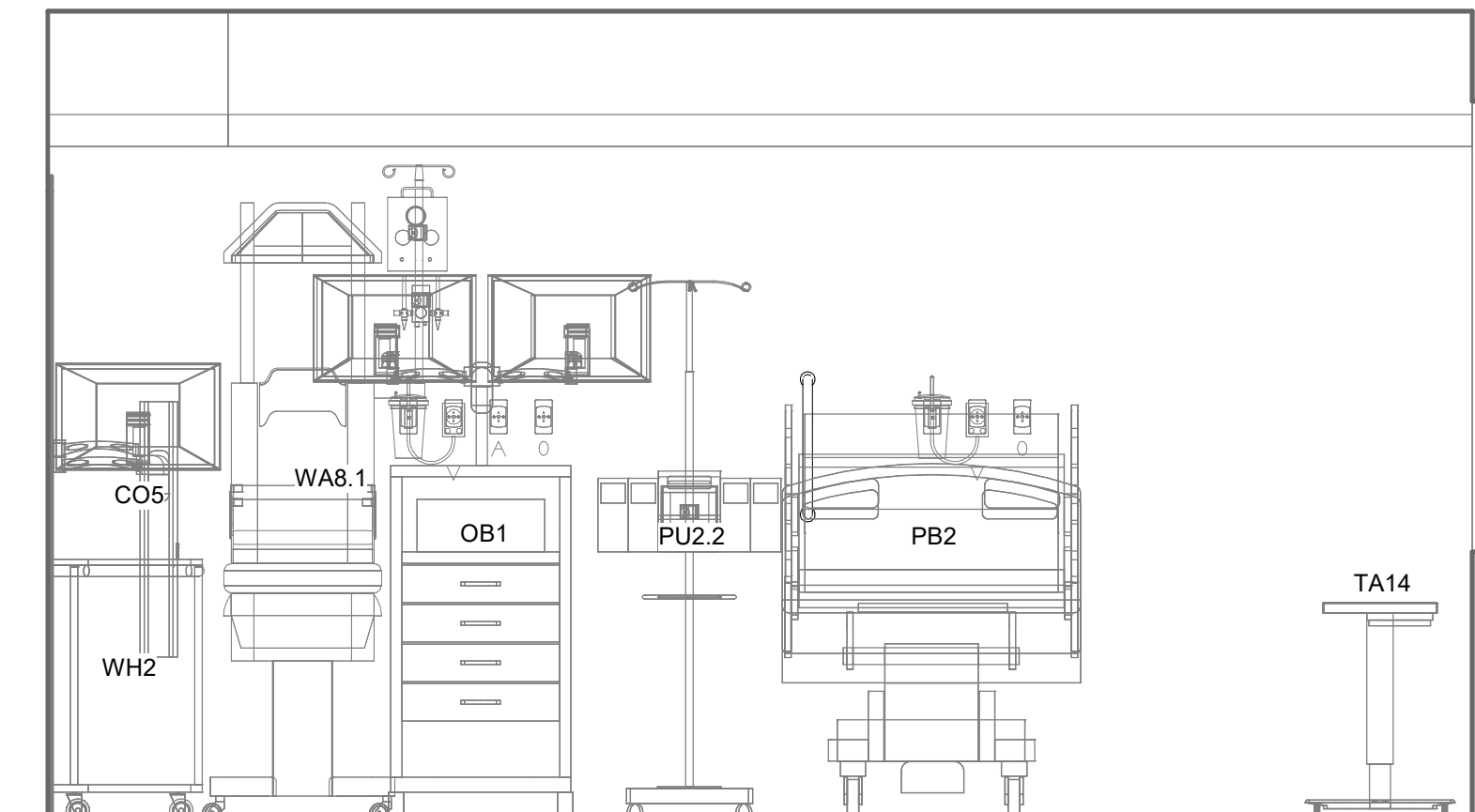
**D1 ENLARGED PLAN - LD110 (W1124)**  
SCALE: 1/2" = 1'-0"



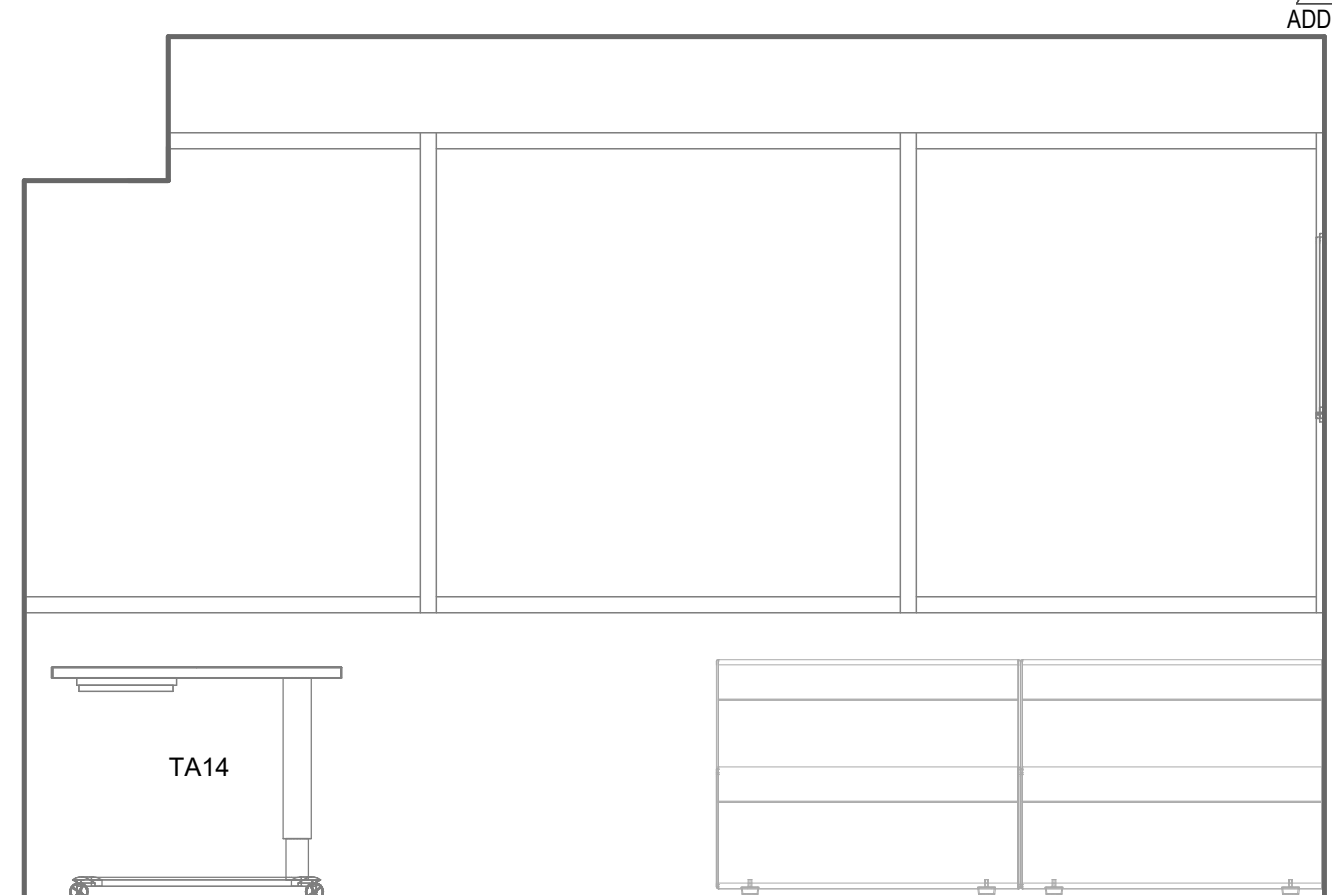
**D2 LD110 (W1124) - 3D VIEW**  
SCALE: 1/2" = 1'-0"



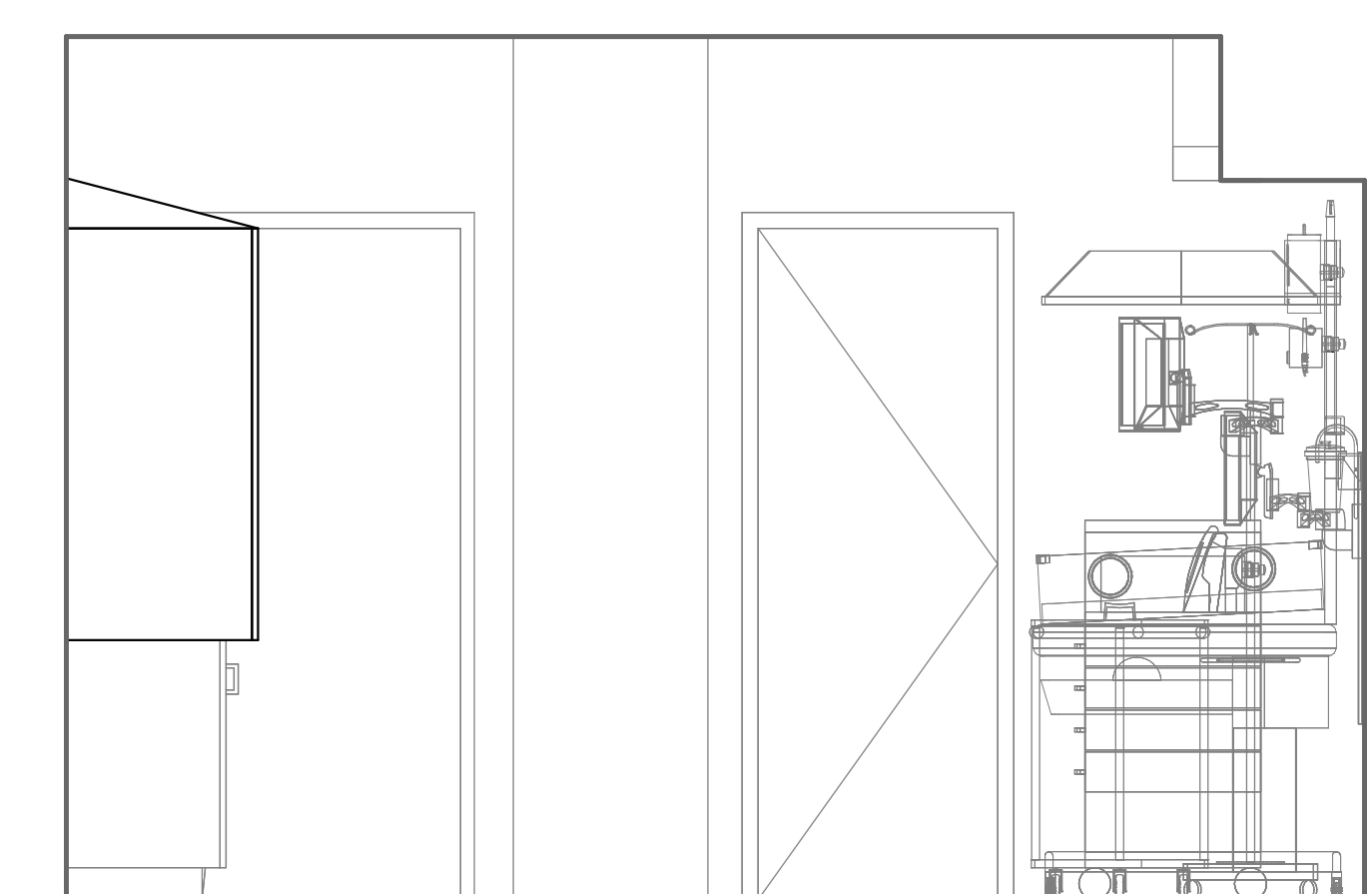
**E4 ELEV. 3 - LD110 (W1124)**  
SCALE: 1/2" = 1'-0"



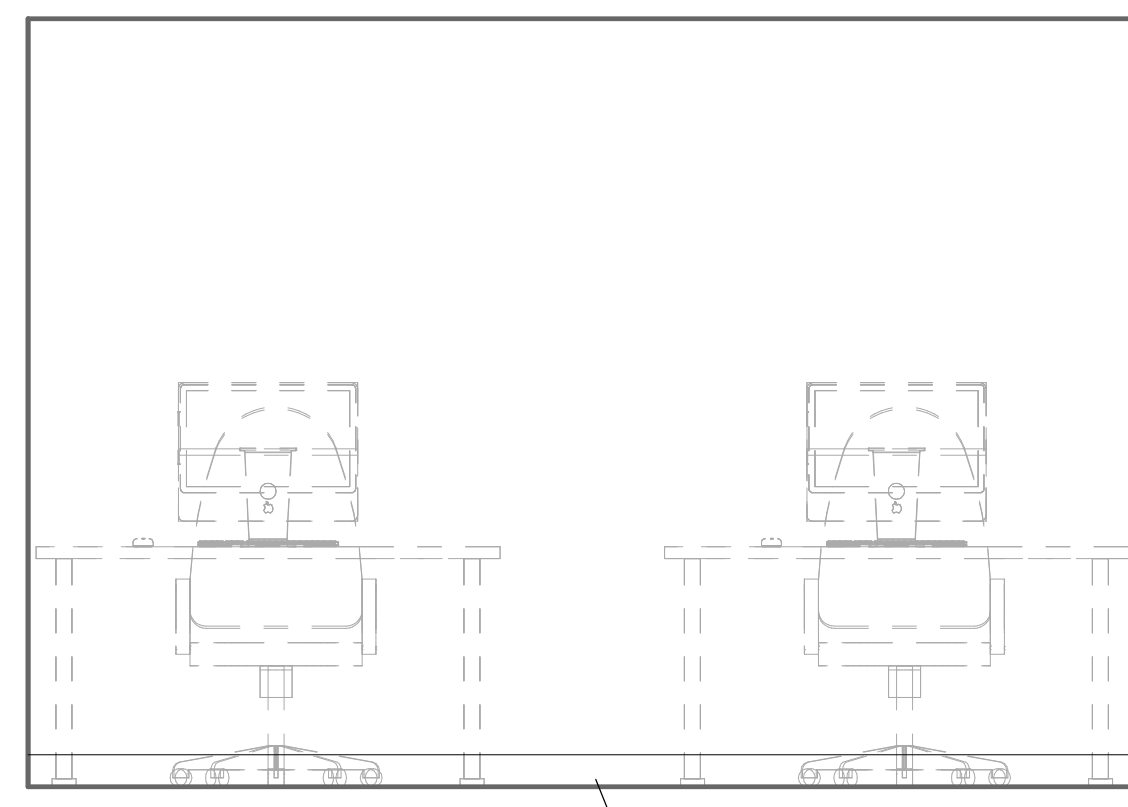
**D4 ELEV. 4 - LD110 (W1124)**  
SCALE: 1/2" = 1'-0"



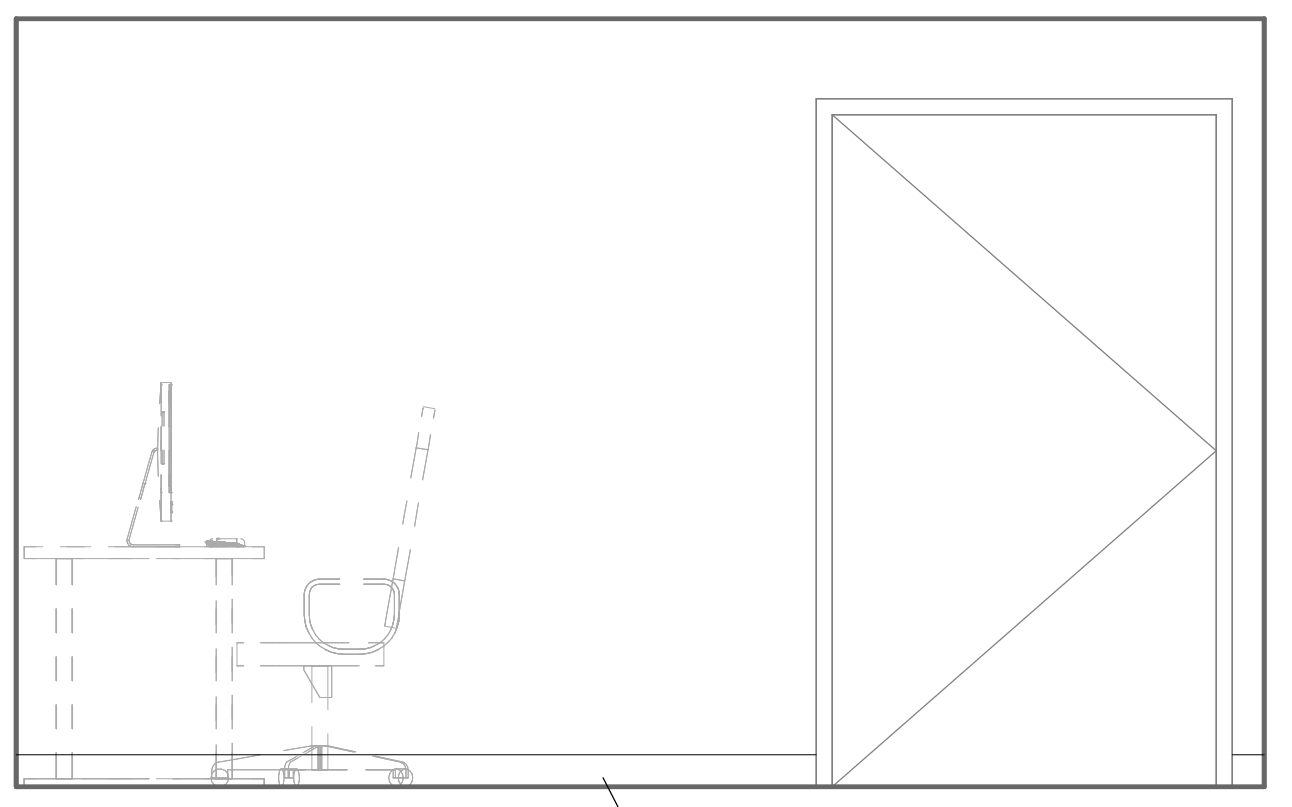
**C4 ELEV. 1 - LD110 (W1124)**  
SCALE: 1/2" = 1'-0"



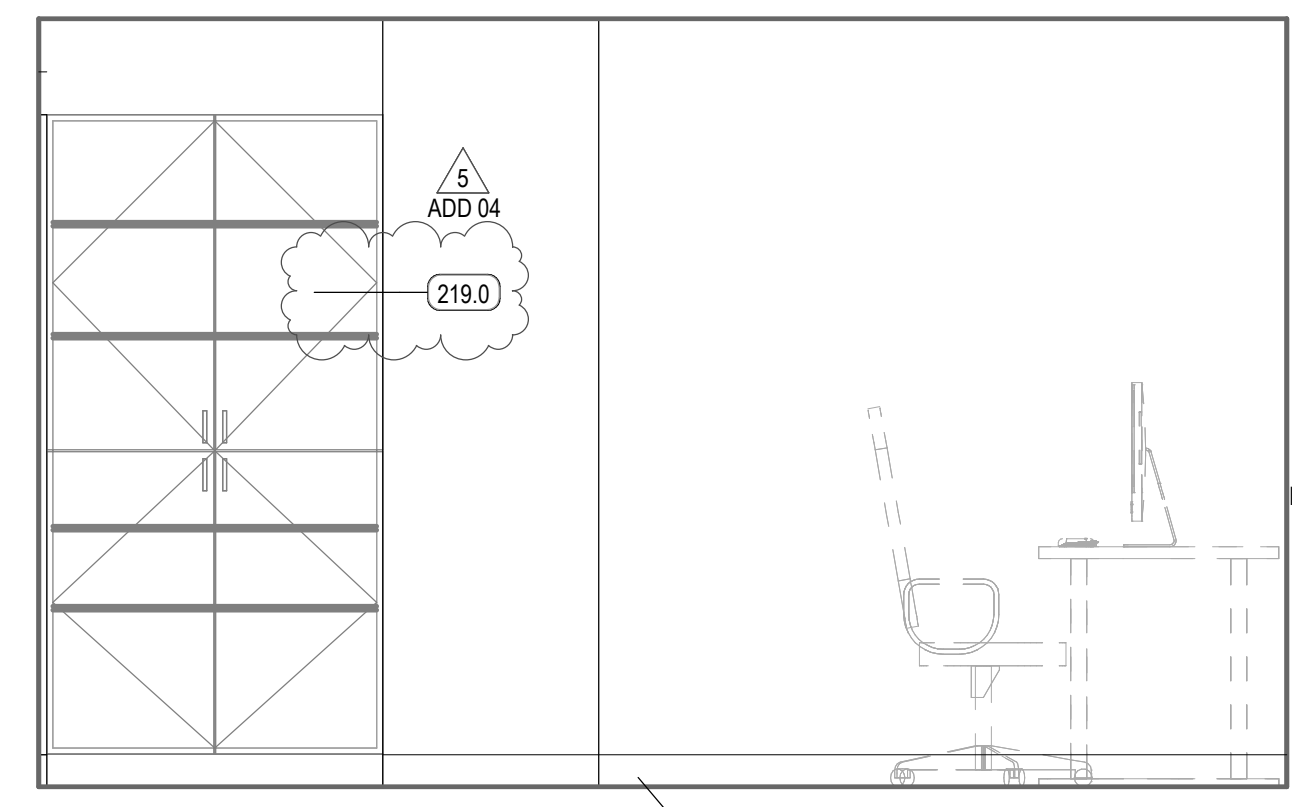
**C5 ELEV. 2 - LD110 (W1124)**  
SCALE: 1/2" = 1'-0"



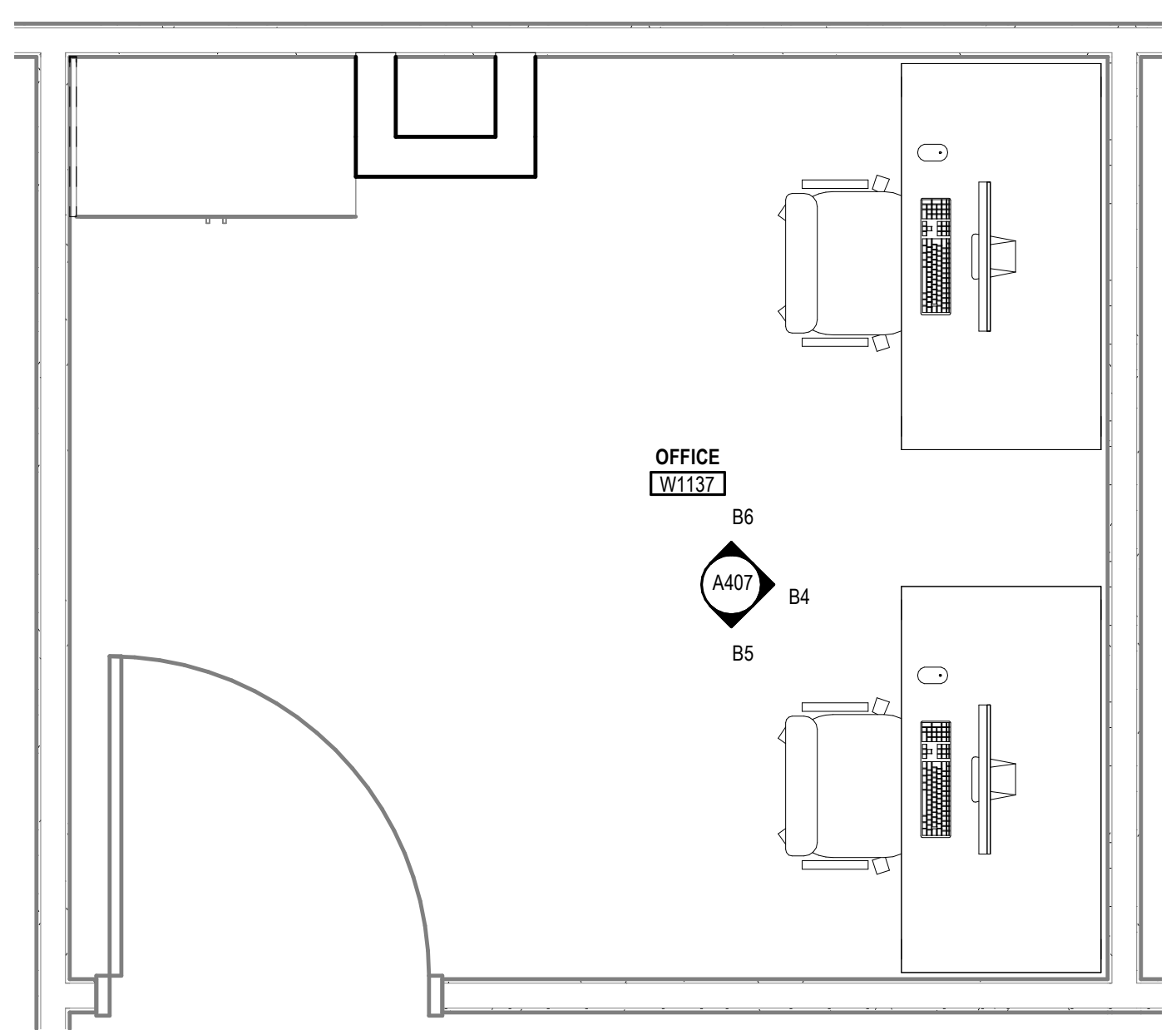
**B4 ELEV. 3 - LD110 (W1124)**  
SCALE: 1/2" = 1'-0"



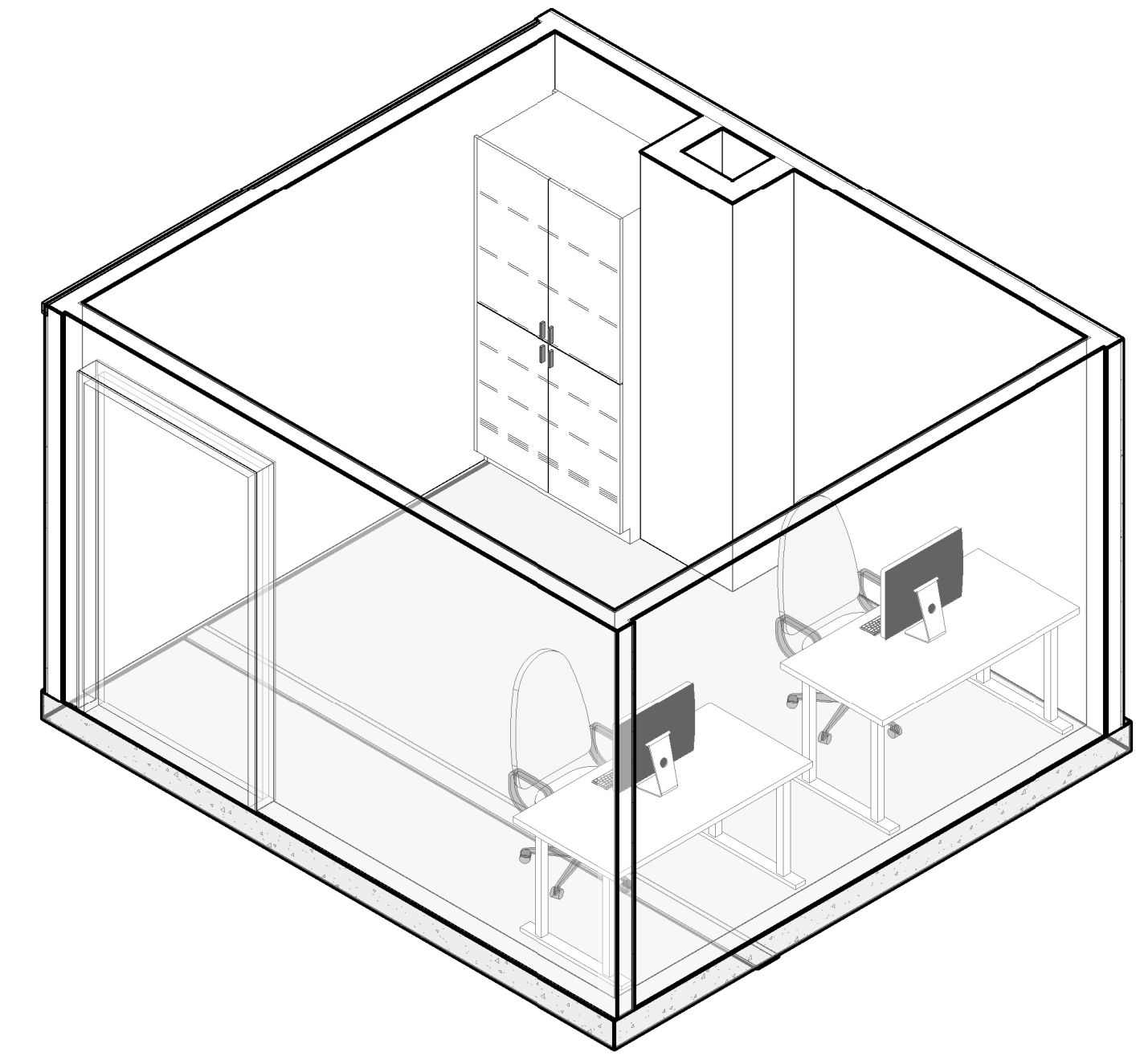
**B5 ELEV. 1 - LD110 (W1124)**  
SCALE: 1/2" = 1'-0"



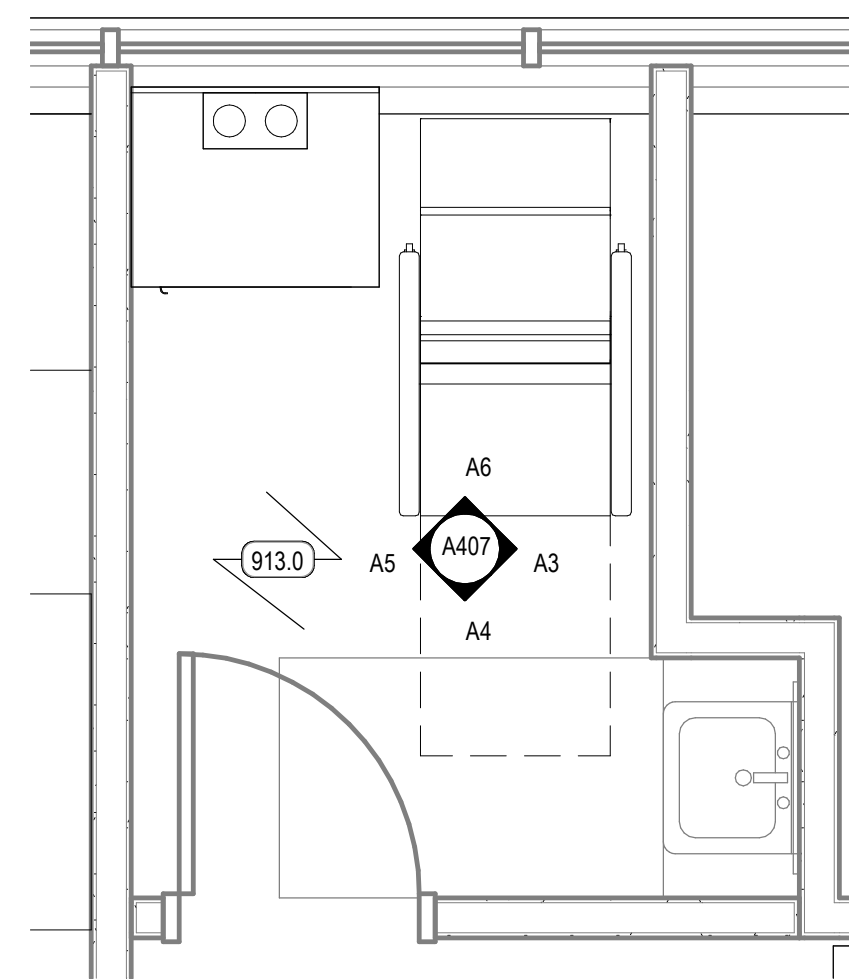
**B6 ELEV. 2 - LD110 (W1124)**  
SCALE: 1/2" = 1'-0"



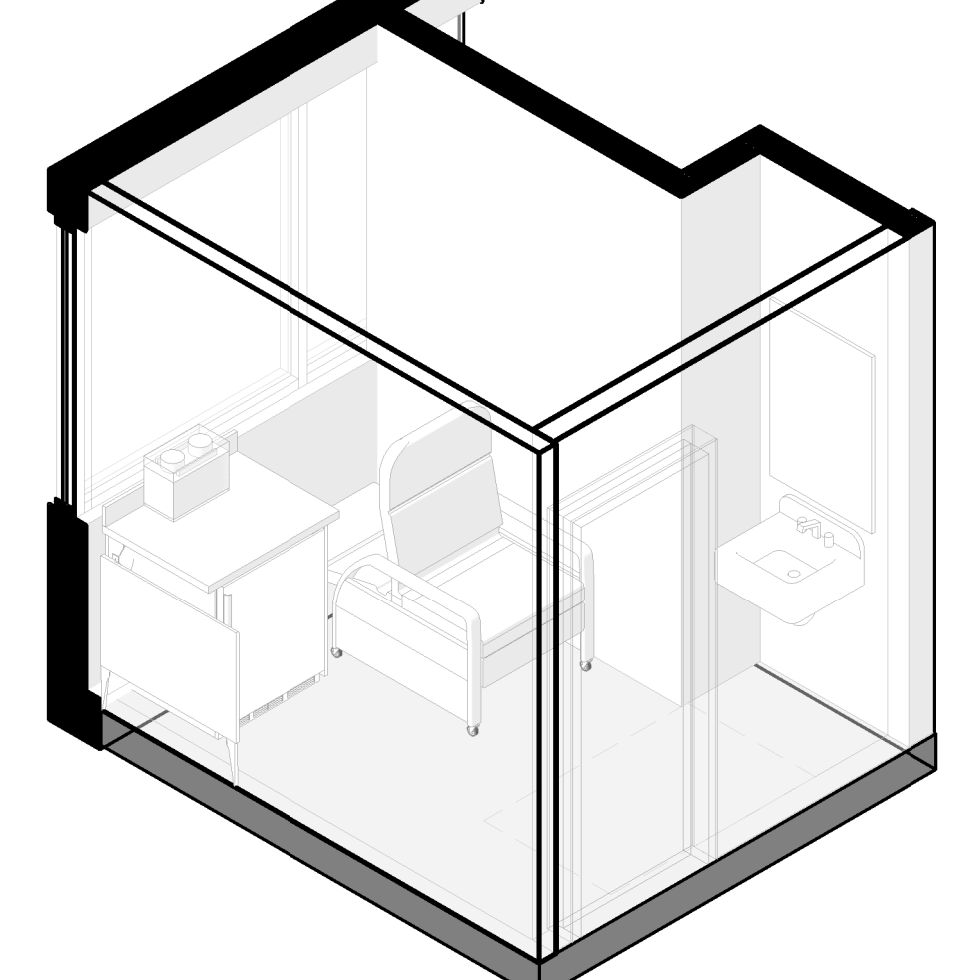
**B1 ENLARGED PLAN - OFFICE W1137**  
SCALE: 1/2" = 1'-0"



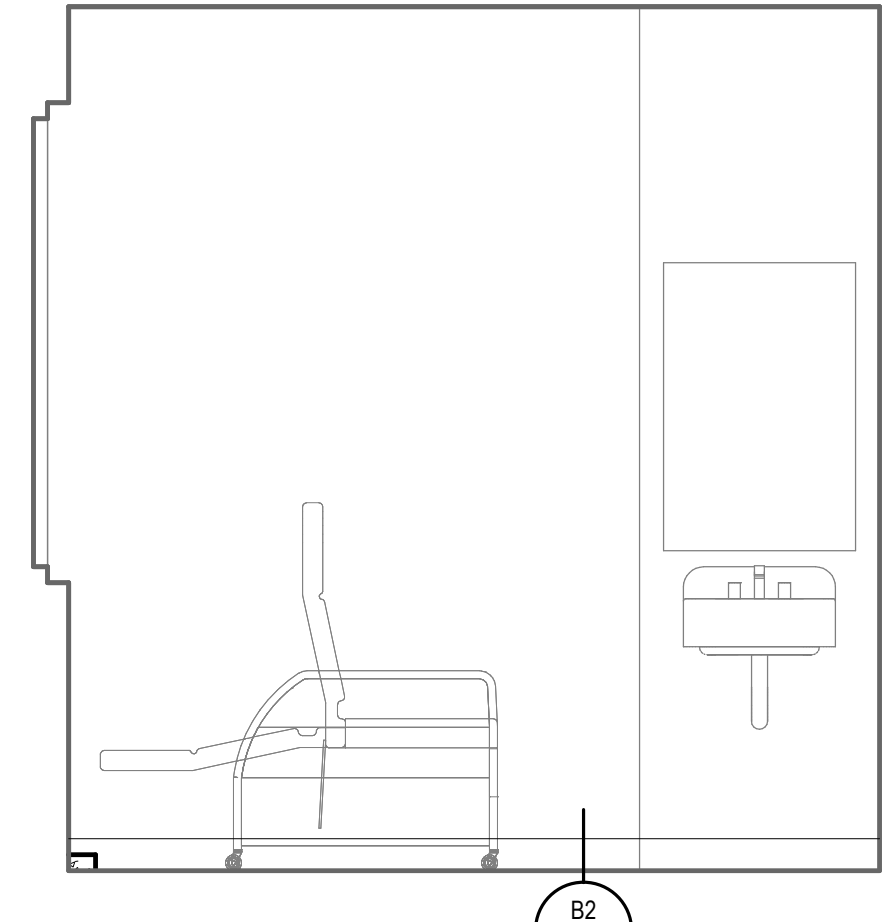
**B2 OFFICE W1137 - 3D VIEW**  
SCALE: 1/2" = 1'-0"



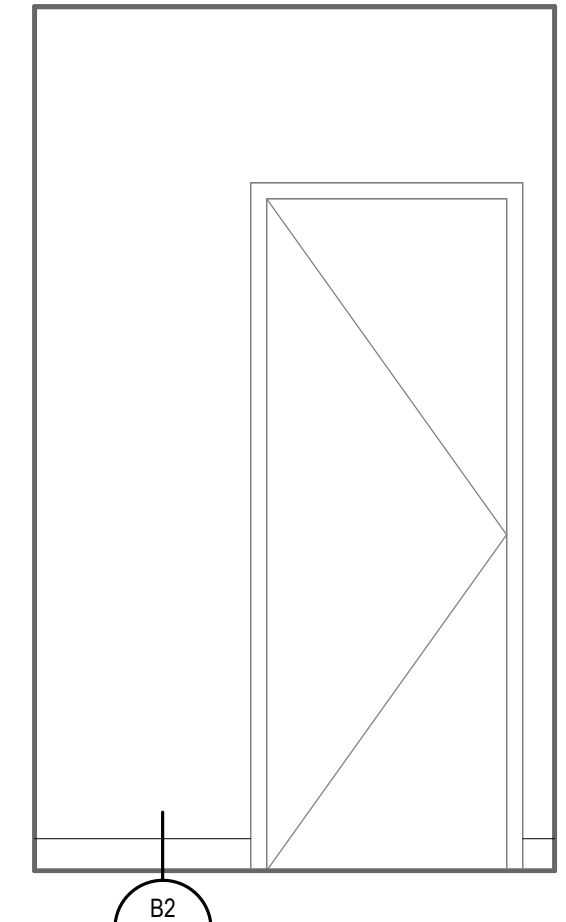
**A1 ENLARGED PLAN - LACTATION ROOM**  
SCALE: 1/2" = 1'-0"



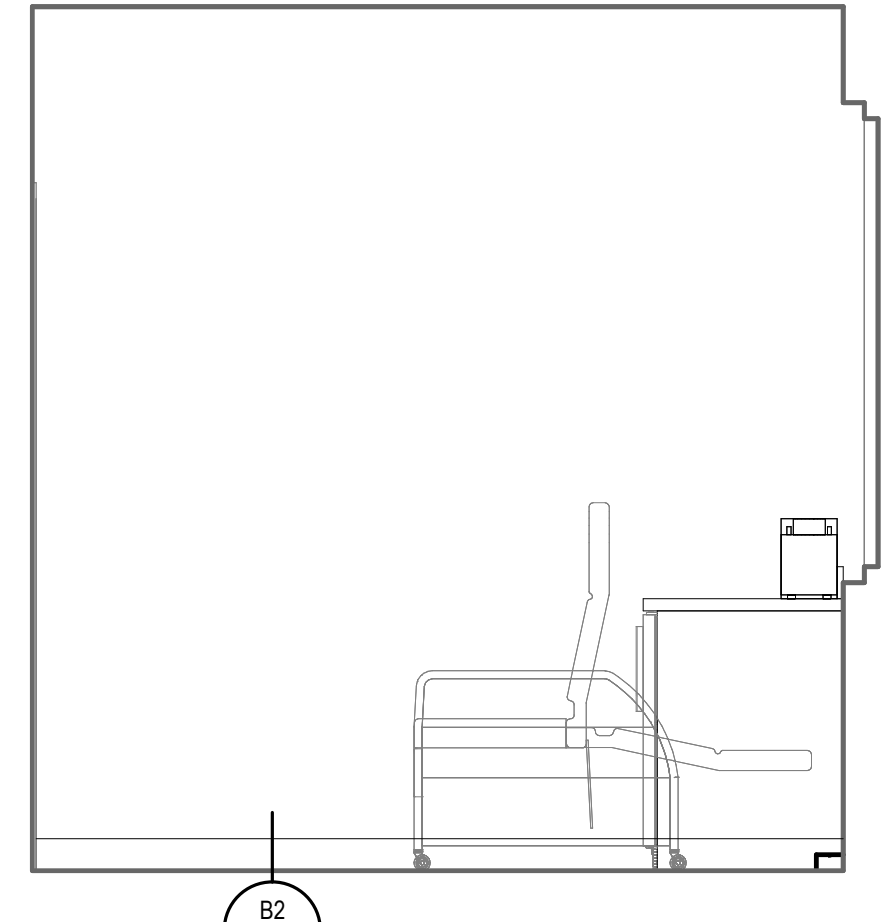
**A2 LACTATION ROOM - 3D VIEW**  
SCALE: 1/2" = 1'-0"



**A3 ELEV. 1 - LACTATION ROOM**  
SCALE: 1/2" = 1'-0"



**A4 ELEV. 2 - LACTATION ROOM**  
SCALE: 1/2" = 1'-0"



**A5 ELEV. 3 - LACTATION ROOM**  
SCALE: 1/2" = 1'-0"

**EQUIPMENT LEGEND**

EQUIPMENT CATEGORIES - ABBREVIATIONS

CODE	DESCRIPTION
MED	MEDICAL
GYM	GYMNASIUM
COM	COMMERCIAL
GEN	GENERAL
OFF	OFFICE
FUR	FURNITURE (NIC)
A	MED - MED GAS-WALL-AIR 2
CA1	MED - CART-CRASH
CA4	MED - CART-EXAM + PROCEDURE
CA10.2	GEN - CART-STORAGE-FULL HEIGHT 24 X 48
CA19	GEN - CART-UTILITY-PARTIAL HEIGHT
CB5	MED - CABINET-NARCOTIC-FULL HEIGHT-SINGLE UNIT
CK2	GEN - CLOCK-WALL-ANALOG-WIRELESS
CO1	OFF - COMPUTER-WALL STATION
CO3	GEN - COMPUTER WORKSTATION-MOBILE
CO4	GEN - COMPUTER WORKSTATION-WALL MOUNTED
CO5	GEN - COMPUTER MONITOR-WORKSTATION-WALL MOUNTED
DI1	GEN - DISPENSER-PAPER TOWEL
DI4	MED - DISPENSER-HAND SANITIZER
DI7	MED - DISPENSER-GLOVE-TRIPLE
DI23	GEN - WINDOW PASS-THROUGH (PHARMACY)
DM5	GEN - DISPENSER-WATER-FREESTANDING (HOT / COLD)
DW1	COM - DISHWASHER-RESIDENTIAL
FS5	COM - FOOD SERVICE-TOASTER
FS11	COM - FOOD SERVICE-COFFEE BREWER (12 CUP)
GY1	GYM - TREADMILL
GY7	GYM - UPPER BODY EXERCISER
GY16	GYM - NUSTEP MACHINE
GY53	GYM - PARALLEL BARS
GY63	GYM - STAIRCASE-EXERCISER
HD3	MED - BIOLOGICAL SAFETY CABINET + BENCHTOP-60"
HD5	MED - HOOD-LAMINAR FLOW + WORKSTATION
IM1	COM - ICE MACHINE-COUNTER
LF1.2	MED - LIFT-PATIENT-CEILING MOUNTED-CURVED RAIL
LF2.2	MED - LIFT-PATIENT-CEILING MOUNTED-STANDARD
LF2.3	MED - LIFT-PATIENT-CEILING MOUNTED-TRAVERSE (BARIATRIC)
LF2	MED - LIFTER-PATIENT-MOBILE
MU1	OFF - MULTIFUNCTION-FREESTANDING
MU3	OFF - MULTIFUNCTION-DESKTOP
MW1	COM - MICROWAVE-COUNTER
MW2	COM - MICROWAVE-COUNTER
O	MED - MED GAS-WALL-OXYGEN 2
OB1	MED - CART-INFANT MONITOR
PB2	MED - BED-PATIENT-TRANSPORT
PR4	OFF - PRINTER-LABEL
PU2.2	MED - STAND - CARE INFUSION PUMP-WITH MED INFUSION PUMP
RE3	COM - REFRIGERATOR-UNDERCOUNTER
RE5	COM - REFRIGERATOR-SINGLE-FULL HEIGHT-RESIDENTIAL
RE5.1	COM - REFRIGERATOR-SINGLE-FULL HEIGHT-RESIDENTIAL
RE14	COM - REFRIGERATOR-FULL HEIGHT-DOUBLE DOOR
RE19	MED - REFRIGERATOR-FULL HEIGHT-LAB-SINGLE DOOR
RE22	COM - FREEZER-SINGLE DOOR-FULL HEIGHT-LAB RATED
RE32	SE - Under Counter Refrigerator ADA - NIC
RO1	COM - RANGE-ELECTRIC W. OVEN
SC11	MED - SCALE-WHEELCHAIR + STAND ON-PORTABLE
SC18	MED - SCALE-DIGITAL-LAB-PORTABLE
SL5	MED - BENCH-GOWNING (PHARMACY)
TA14	MED - TABLE-OVERBED-PATIENT
TA27	MED - PALNTH-TREATMENT (7' X 7')
TV2	GEN - TELEVISION-WALL MOUNTED (42")
TV3	GEN - TELEVISION-WALL MOUNTED (55")
VISC	MED - MED GAS-WALL-VACUUM-SUCTION CANISTER
WA8.1	MED - WARMER-INFANT-WITH AIRBLENDE- RESUSCITATION NEOPURIF SYSTEMS
WC1	GEN - WHEELCHAIR
WH2	MED - HAMPER-LINEN
WH17	GEN - WASTE-CAN-44 GAL. (W. CASTERS)

**KEYED NOTES**

- 219.0 EXISTING MILLWORK TO REMAIN, PROTECT IN PLACE
- 236.1 EXISTING SOLID SURFACE COUNTERTOP; REMOVE, MODIFY AND REINSTALL ADD INTEGRAL SOLID SURFACE SIDE SPLASH AGAINST NEW CABINET TO MATCH SOLID SURFACE COUNTERTOPS IN EXISTING ROOMS
- 605.2 MILLWORK, WALL MOUNTED UPPER CABINET WITH BLOCKING
- 607.0 MILLWORK, FILLER PANEL
- 912.0 SCHEDULED BASE
- 913.0 SCHEDULED FLOOR FINISH
- 920.0 SCHEDULED PAINT

REV	DATE	DESCRIPTION
1	01.11.21	ADD 01
4	01.22.21	ADD 03
5	01.25.21	ADD 04

VCBO NUMBER: 19740.00  
CLIENT NUMBER:  
DATE: 15 DECEMBER 2020