

ADDENDUM

Date Issued:	Jul 2, 2024
Project:	Intermountain Health McKay Dee Hospital – Mammography Scan Room Addition 4401 Harrison Blvd Ogden, UT 84403
Addendum Number:	1

The Contractors submitting proposals on the above-captioned project shall be governed by the following addendum, changes and explanations to the drawings and specifications and shall submit their bids in accordance therewith.

Item Number	General Items Description
	<p>Questions from Bidders:</p> <p>Question #1: Adding additional ICRA not indicated on the drawing set was talked about on the walk. Please indicate where this is needed to complete a full containment. Response: See Demolition floor plan Sheet A111</p> <p>Question #2: ED101 Sheet Note 7 states "REMOVE ALL ABANDONED RACEWAY, CONDUIT, WIRING AND CABLING WHETHER ABANDONED PREVIOUS TO THIS PROJECT OR AS A RESULT OF THIS PROJECT. NOT ALL ABANDONED ITEMS ARE SHOWN ON THESE PLANS AND FIELD VERIFICATION OF DEMOLITION SCOPE EXTENT IS REQUIRED. Because this is unquantifiable, is an allowance for this portion of the work acceptable? Response: Yes, please include an allowance of \$5,000 in your proposals for this work.</p> <p>Question #3: The Demo sheets call for the Ceiling grid to remain and tile to be removed and replaced. But in the finish schedule it calls for new tile and matching grid. Please confirm there is to be new grid and tile throughout. Response: Yes, please provide new grids and new 2' x 2' ceiling tiles throughout. Ceiling tiles in the Reception A110, Mammo Exam #3 A111, Interview A112, Work A113, and Corridor A114 to be ACT Type 1 – Armstrong Ultima Health Zone 1935. Ceiling tiles in the Waiting/Lobby, Corridor A116, and Corridor A147 to match adjacent existing. For bidding purpose please bid these as ACT Type 1 but will need to be field verified to match adjacent existing. See updated finish plan Sheet A117</p> <p>Question #4: What is the floor to deck height on Level 4? Response: 15'-0".</p> <p>Question #5: The bid form in the specifications is different than the one provided in the document log. Are we to replace the one from the document log with the one from the specifications? Response: No. Please use the one provided in the document log.</p>

Item Number	General Items Description
	<p>Question #6: For the existing fire sprinkler system, please confirm how the heads are attached. i.e(Flex drops or hard piped)</p> <p>Response: The existing fire sprinkler heads are on hard piped arm-over connections.</p>

Sheet Number	Drawings
Architectural Drawings	
A111	Added new ICRA walls.
A116	Provided clarification on new ceiling tiles an grids. Also see answer o Question #3 above.
Electrical Drawings	
	See attached electrical addendum #01

Attachments:

Architectural Drawings: A111, and A116.
 Architectural Specification: 012100 Allowances
 Electrical Addendum #01

SECTION 012100 - ALLOWANCES

PART 1 - GENERAL

1.1 RELATED DOCUMENTS

- A. Drawings and general provisions of the Contract, including General and Supplementary Conditions and Division 1 Specification Sections, apply to this Section.

1.2 SUMMARY

- A. Section includes administrative and procedural requirements governing allowances.
- B. Types of allowances include the following:
 - 1. Lump-sum allowances.

1.3 DEFINITIONS

- A. Allowance is a quantity of work or dollar amount established in lieu of additional requirements, used to defer selection of actual materials and equipment to a later date when direction will be provided to Contractor. If necessary, additional requirements will be issued by Change Order.

1.4 SELECTION AND PURCHASE

- A. At the earliest practical date after award of the Contract, advise Architect of the date when final selection, or purchase and delivery, of each product or system described by an allowance must be completed by the Owner to avoid delaying the Work.
- B. At Architect's request, obtain proposals for each allowance for use in making final selections. Include recommendations that are relevant to performing the Work.
- C. Purchase products and systems selected by Architect from the designated supplier.

1.5 ACTION SUBMITTALS

- A. Submit proposals for purchase of products or systems included in allowances in the form specified for Change Orders.

1.6 INFORMATIONAL SUBMITTALS

- A. Submit invoices or delivery slips to show actual quantities of materials delivered to the site for use in fulfillment of each allowance.
- B. Submit time sheets and other documentation to show labor time and cost for installation of allowance items that include installation as part of the allowance.

- C. Coordinate and process submittals for allowance items in same manner as for other portions of the Work.

1.7 LUMP-SUM ALLOWANCES

- A. Allowance shall include cost to Contractor of specific products and materials ordered by Owner or selected by Architect under allowance and shall include taxes, freight, and delivery to Project site.
- B. Unless otherwise indicated, Contractor's costs for receiving and handling at Project site, labor, installation, overhead and profit, and similar costs related to products and materials ordered by Owner or selected by Architect under allowance shall be included **as part of the Contract Sum** and not part of the allowance.
- C. Unused Materials: Return unused materials purchased under an allowance to manufacturer or supplier for credit to Owner, after installation has been completed and accepted.
 - 1. If requested by Architect, retain and prepare unused material for storage by Owner. Deliver unused material to Owner's storage space as directed.

1.8 ADJUSTMENT OF ALLOWANCES

- A. Allowance Adjustment: To adjust allowance amounts, prepare a Change Order proposal based on the difference between purchase amount and the allowance, multiplied by final measurement of work-in-place where applicable. If applicable, include reasonable allowances for cutting losses, tolerances, mixing wastes, normal product imperfections, and similar margins.
 - 1. Include installation costs in purchase amount only where indicated as part of the allowance.
 - 2. If requested, prepare explanation and documentation to substantiate distribution of overhead costs and other markups.
 - 3. Submit substantiation of a change in scope of Work, if any, claimed in Change Orders related to unit-cost allowances.
 - 4. Owner reserves the right to establish the quantity of work-in-place by independent quantity survey, measure, or count.
- B. Submit claims for increased costs because of a change in scope or nature of the allowance described in the Contract Documents, whether for the purchase order amount or Contractor's handling, labor, installation, overhead, and profit.
 - 1. Do not include Contractor's or subcontractor's indirect expense in the Change Order cost amount unless it is clearly shown that the nature or extent of Work has changed from what could have been foreseen from information in the Contract Documents.
 - 2. No change to Contractor's indirect expense is permitted for selection of higher- or lower-priced materials or systems of the same scope and nature as originally indicated.

PART 2 - PRODUCTS (Not Used)

PART 3 - EXECUTION

3.1 EXAMINATION

- A. Examine products covered by an allowance promptly on delivery for damage or defects. Return damaged or defective products to manufacturer for replacement.

3.2 PREPARATION

- A. Coordinate materials and their installation for each allowance with related materials and installations to ensure that each allowance item is completely integrated and interfaced with related work.

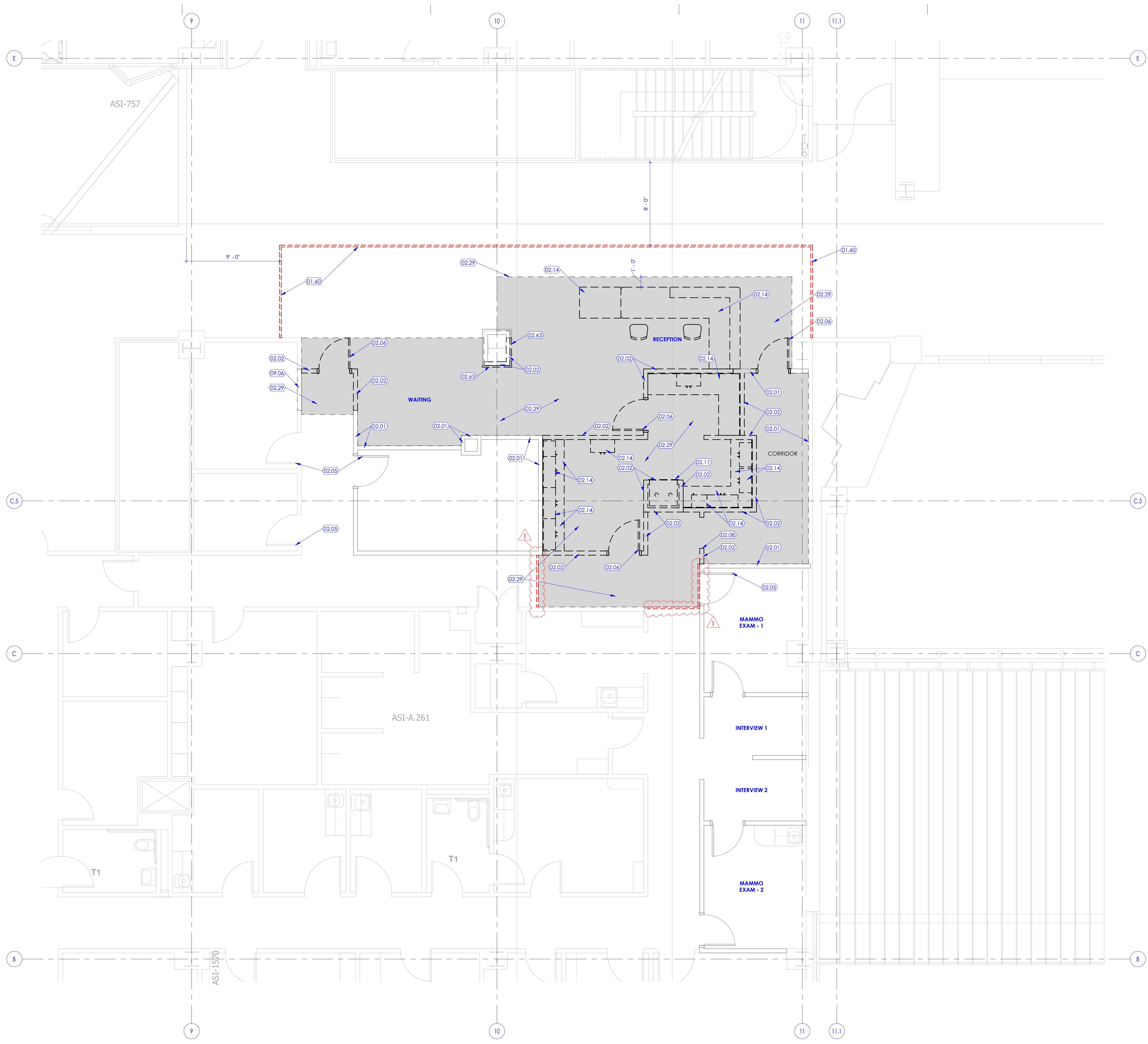
3.3 SCHEDULE OF ALLOWANCES

- A. **Allowance No. 1** (Lump-Sum Allowance): Include the sum of \$75,000.00 for the rework of the pneumatic tube station.

- B. **Allowance No. 2** (Lump-Sum Allowance): Include the sum of \$5,000.00 for the removal of abandoned raceway, conduits, wiring and cabling whether abandoned previous to this project or as a result of this project.

ADD#01

END OF SECTION 012100



KEYED NOTES

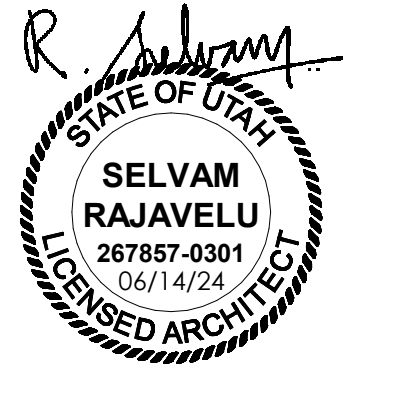
- 01.60 DASHED LINE INDICATES FLOOR TO CEILING DUST PROOF CONSTRUCTION BARRIER TO PREVENT DUST AND DIRT MIGRATION AND TO SEPARATE AREAS OCCUPIED BY THE OWNER FROM FUMES AND NOISE. CONSTRUCTION BARRIER TO BE ERRECTED WITH 3 5/8" 20 GA. MTL STUDS @ 16" O.C. FRAMING WITH 5/8" TYPE 'X' GYPSUM BOARD ON BOTH SIDES. TAPE & SEAL ALL JOINTS AND OPENINGS. SEAL JOINTS AT PERIMETER. PAINT WALL ON EXISTING CORRIDOR SIDE. PARTITION TO BE EQUIPPED WITH 4'-0" LOCKABLE MAN DOOR WITH STICKY MATS ON BOTH SIDES OF DOOR. COORDINATE WITH OWNER FOR EXACT LOCATION OF CONSTRUCTION BARRIER. PRE-FABRICATED RIGID ICRA BARRIERS ARE ALSO ACCEPTABLE. OTHER ICRA PERMITS MAY BE REQUIRED. COORDINATE WITH FACILITIES AND INFECTION PREVENTION.
- 02.01 WALL, EXISTING TO REMAIN. PROTECT WALL FROM DAMAGE DURING CONSTRUCTION.
- 02.02 WALL, EXISTING INDICATED WITH DASHED LINE TO BE REMOVED.
- 02.05 DOOR, EXISTING TO REMAIN. PROTECT DOOR FROM DAMAGE DURING CONSTRUCTION.
- 02.06 DOOR AND DOOR FRAME, EXISTING INDICATED WITH DASHED LINE TO BE REMOVED. DOOR FRAME SHALL BE REMOVED UNLESS NOTED OTHERWISE.
- 02.08 DOOR FRAME, EXISTING INDICATED WITH DASHED LINE TO BE REMOVED.
- 02.11 EXISTING PNEUMATIC TUBE STATION TO BE REMOVED AND SALVAGED. CONTRACTOR TO COORDINATE WITH SWISSLOG.
- 02.14 CABINET AND COUNTERTOP, EXISTING INDICATED WITH DASHED LINE TO BE REMOVED.
- 02.29 REMOVE CARPET TILE FLOORING AND BASE IN THIS AREA AND PREP FOR NEW FLOOR FINISHES - SEE FINISH FLOOR PLAN AND FINISH SCHEDULE.
- 02.63 CAREFULLY REMOVE WOOD VENEER PANEL AT COLUMN FURRING. CUT AND MODIFY PANEL PER NEW WALL CONSTRUCTION.
- 09.06 UPGRADE WALL TO A 1-HR FIRE RATED WALL. SEE WALL TYPE 'C3'.

GENERAL NOTES

- A. SEE SHEET G003 AND G005 FOR SYMBOLS, GENERAL NOTES AND LEGEND.
- B. SEE SHEET A505A FOR CABINET LEGEND.
- C. SEE SHEET A601A FOR DOOR SCHEDULE.
- D. SEE SHEET A603A FOR FINISH SCHEDULE AND GENERAL NOTES.



NJRA Architects, Inc.
5223 S. Ascension Way, Suite 350
Murray, Utah 84123
801.364.9259
www.njraarchitects.com



Intermountain Health
 McKay Dee Hospital
 Mammography Scan Room Addition

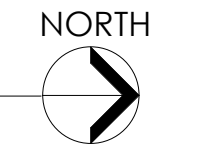
4401 Harrison Blvd
 Ogden, UT 84403

NJRA Project # 23220.00
Construction Documents June 14, 2024
1 Addendum#01 Jul 2, 2024

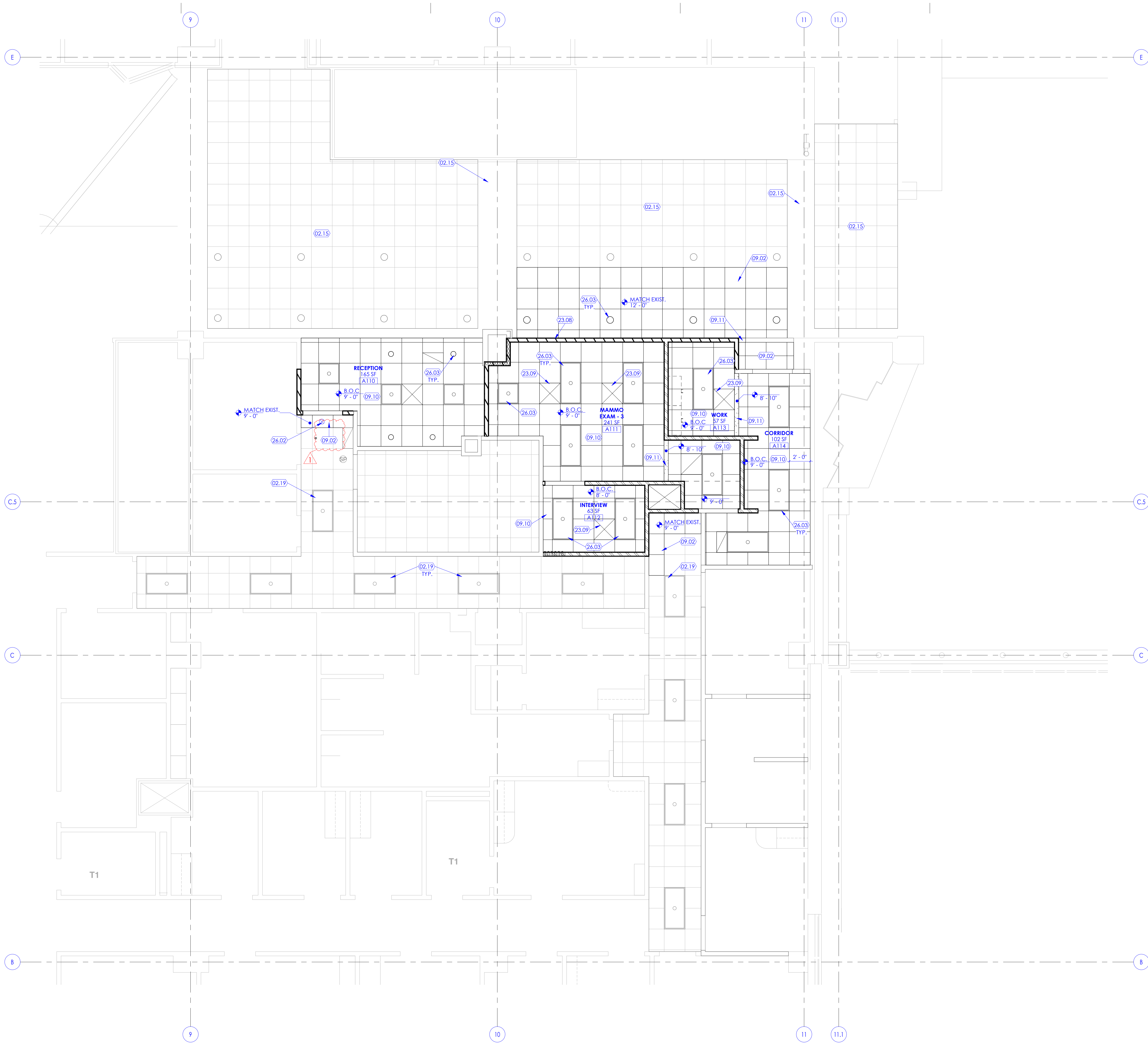
Demolition
Floor Plan
Level 4

A111

1 Demolition Floor Plan Level 4
SCALE: 1/4" = 1'-0"



7/1/2024 4:09:48 PM

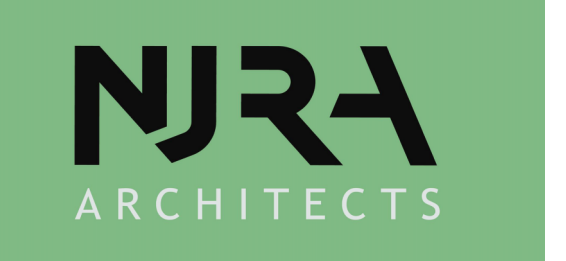


KEYED NOTES

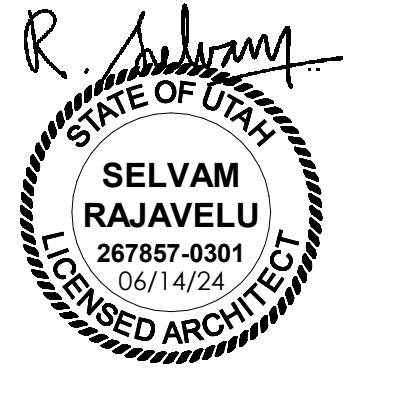
- 02.15 CEILING, EXISTING TO REMAIN. PROTECT CEILING FROM DAMAGE DURING CONSTRUCTION.
- 02.19 LIGHT FIXTURE, EXISTING TO REMAIN.
- 09.02 PROVIDE NEW CEILING TILES AND NEW CEILING GRIDS. NEW CEILING TILES TO MATCH EXISTING COLOR & FINISH.
- 09.10 CEILING: SEE REFLECTED CEILING PLANS FOR CEILING HEIGHT AND CEILING TYPE INDICATED WITH A CEILING TAG (AS C1, C2, C3, ETC.). SEE FINISH SCHEDULE ON SHEET A603A FOR MATERIAL, SIZE, COLOR, ETC. FOR EACH CEILING TAG.
- 09.11 GYPSUM BOARD HEADER. SEE DETAIL 4/A503A UNLESS NOTED OTHERWISE WITH A SEPARATE SPECIFIC DETAIL.
- 23.08 EXTEND EXISTING DUCTWORK TO NEW WALL. REINSTALL SALVAGED GRILL, SEE MECHANICAL DRAWINGS.
- 23.09 MECHANICAL DIFFUSER. SEE MECHANICAL DRAWINGS.
- 26.02 EXIT SIGN TO BE RE-INSTALLED. SEE ELECTRICAL DRAWINGS.
- 26.03 LIGHT FIXTURE. SEE ELECTRICAL DRAWINGS.

GENERAL NOTES

- A. SEE SHEET G003 AND G005 FOR SYMBOLS, GENERAL NOTES AND LEGEND.
- B. SEE SHEET A505A FOR CABINET LEGEND.
- C. SEE SHEET A601A FOR DOOR SCHEDULE.
- D. SEE SHEET A603A FOR FINISH SCHEDULE AND GENERAL NOTES.



NJRA Architects, Inc.
5223 S. Ascension Way, Suite 350
Murray, Utah 84123
801.364.9259
www.njraarchitects.com



Intermountain Health
 McKay Dee Hospital
 Mammography Scan Room Addition

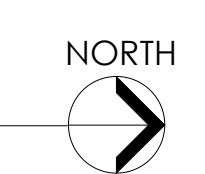
4401 Harrison Blvd
 Ogden, UT 84403

NJRA Project # 23220.00
Construction Documents June 14, 2024
1 Addendum#01 Jul 2, 2024

Reflected Ceiling Plan
Level 4

A116

1 Reflected Ceiling Plan Level 4
SCALE: 1/4" = 1'-0"



7/1/2024 4:09:50 PM



Mechanical Engineering
Electrical Engineering
Technology Engineering
Acoustical Engineering
Lighting Design
Theatre Design
Fire Protection Engineering
Building Commissioning

Salt Lake City | Phoenix | St. Louis | Baltimore
[p] 800-678-7077
www.spectrum-engineers.com

Electrical Addendum #1

Date: July 1, 2024
To: Shailesh Munot
Company: NJRA Architects
Job: IH McKay-Dee Mammography
Job No: 240069
Cc:

From: Jason Worthen
Email: Jason.worthen@speceng.com
Phone: 801-401-8442
Re:

This Addendum shall be considered part of the Contract Documents and Project Manual for the above mentioned project as though it had been issued at the same time and shall be incorporated integrally therewith. Where provisions of the following supplementary data differ from those of the original Contract Documents and Project Manual, the Addendum shall govern and take precedence.

Questions

1. The electrical sheet is missing a fire damper.
 - a. This has been added to the electrical sheet.

2. ED101 Sheet Note 7 states, "REMOVE ALL ABANDONED RACEWAY, CONDUIT, WIRING AND CABLING WHETHER ABANDONED PREVIOUS TO THIS PROJECT OR AS A RESULT OF THIS PROJECT. NOT ALL ABANDONED ITEMS ARE SHOWN ON THESE PLANS, AND FIELD VERIFICATION OF DEMOLITION SCOPE EXTENT IS REQUIRED. Because this is unquantifiable, is an allowance for this portion of the work acceptable?
 - a. Yes, this is acceptable. We don't expect there to be a significant amount of abandoned electrical in the scope of the project. Provide a \$5,000 allowance.

Drawings

1. EL601: Interior Lighting Fixture Schedule
 - a. Added additional approved manufacturers.

2. EY01: Level 4 Auxiliary Plan
 - a. Added power for missing fire smoke damper.

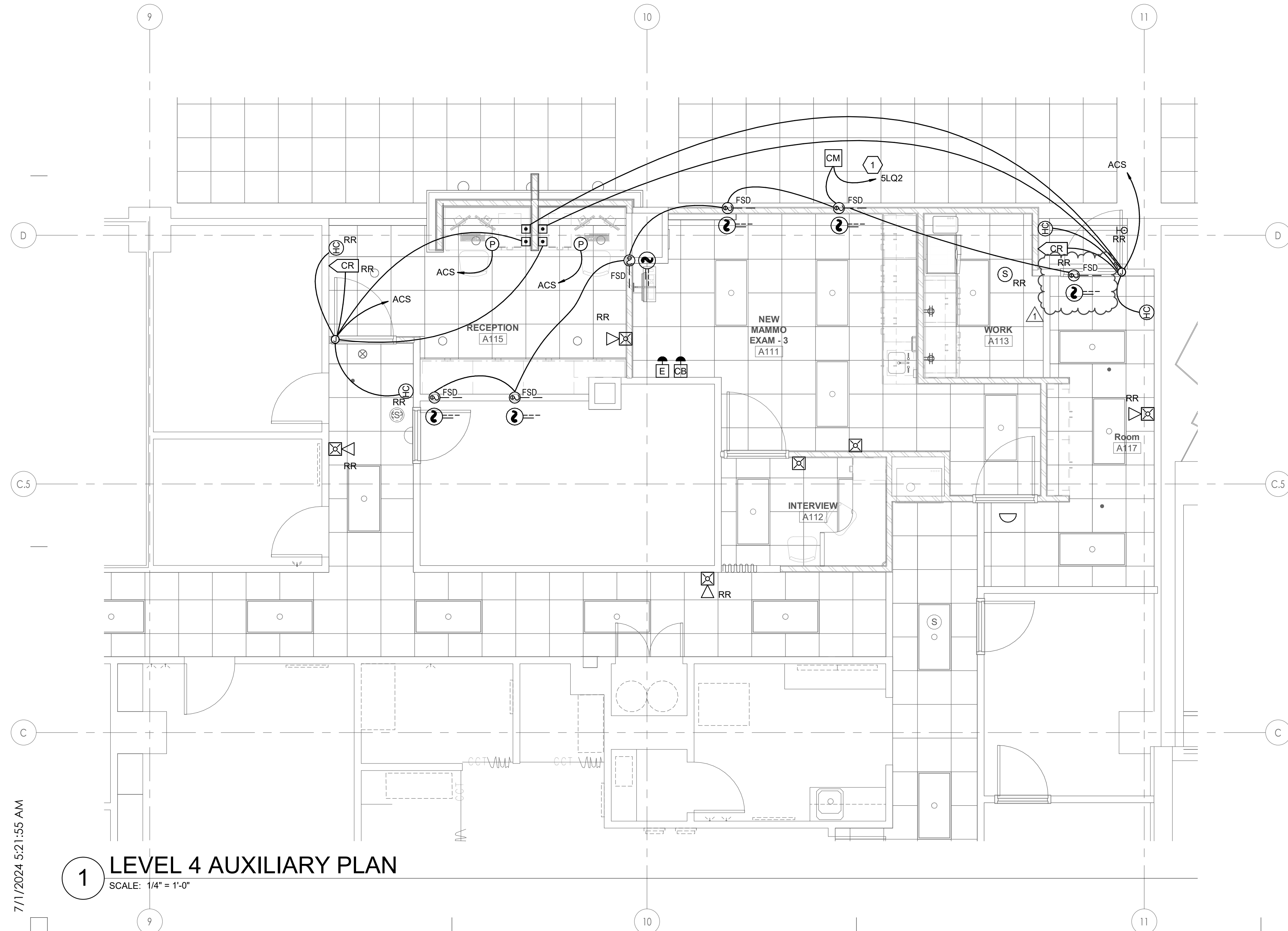
END OF ADDENDUM

Attachments < EL601, EY101 >



INTERIOR LIGHTING FIXTURE SCHEDULE										
GENERAL NOTES										
		<ol style="list-style-type: none"> SUBSTITUTIONS AND/OR EQUAL FIXTURES MUST RECEIVE APPROVAL PRIOR TO BIDDING. THEY MUST BE SUBMITTED TO THE ENGINEER NO LESS THAN 2 WEEKS PRIOR TO BID OPENING. SAMPLES MUST BE PROVIDED FOR ANY AND ALL FIXTURES UPON A/E REQUEST PRIOR TO RELEASING FIXTURES. ALL FIXTURES SHALL BE LISTED AND APPROVED FOR THEIR INTENDED USE AND LOCATION. VERIFY THE PROPER MOUNTING KITS OR ACCESSORIES TO FACILITATE INSTALLATION AS SHOWN AT EACH LOCATION ON THE DRAWINGS. COMPLY WITH THE "INTERIOR LIGHTING" SECTION OF THE SPECIFICATIONS. ALL LIGHT FIXTURES TO BE EITHER "DLC" OR "LIGHTING FACTS" LISTED OR TO BE APPROVED BY ARCHITECT/ENGINEER AND OWNER. CONTRACTOR ALLOWANCE PRICES ARE ACCURATE WHEN THIS JOB WAS SPECIFIED. CONTRACTOR AND ELECTRICAL DISTRIBUTOR SHALL VERIFY THIS ALLOWANCE AND REPORT ANY PROBLEMS TO THE ENGINEER BEFORE THE BID. ALLOWANCE PRICE MAY OR MAY NOT INCLUDE LAMP(S) OR FREIGHT AS NOTED, AND DO NOT INCLUDE ANY TAXES. 								
ID	DESCRIPTION	SIZE (NOMINAL)	DELIVERED DIRECT LUMENS	DELIVERED INDIRECT LUMENS	COLOR TEMP	CRI	TYPE	VOLTAGE	WATTS	MANUFACTURER (CATALOG SERIES)
(D6)	DESCRIPTION: 6" ROUND, RECESSED LED DOWNLIGHT, SEMI-SPECULAR REFLECTOR MOUNTING: CEILING, RECESSED FINISH: WHITE TRIM FINISH OPTICS: - OPTIONS: - EM: -	LENGTH: - WIDTH: - DEPTH: 6" - 6"	1,500		3500K		DIMMING (1%)	120/277	18	SOTHAM (EVO3515 AR LSS MWD MVOLT G21 TRV) HALO (HCB1SD010HM612835 61MDHWF) LIGHTOLIER (GRNPRDL15835CC210U) VANT (VEDSCR)
(E1)	DESCRIPTION: EXIT SIGN, EDGE LIT LED ACRYLIC, SINGLE FACE, GREEN LETTERING MOUNTING: UNIVERSAL MOUNTING FINISH: BRUSHED ALUMINUM FINISH OPTICS: - OPTIONS: AC ONLY EM: -	LENGTH: - WIDTH: - DEPTH: -			GREEN		NO DIMMING	120/277	3	DUAL-LITE (AECGWA) EVENLITE (TEX-AC-G-2M) EMERGENSEE (SEEKLRN) BARON (S900U)
(ER)	DESCRIPTION: X-RAY IN USE LIGHT MOUNTING: WALL FINISH: SCBA OPTICS: - OPTIONS: - EM: -	LENGTH: - WIDTH: - DEPTH: -			RED		NO DIMMING	120/277	3	KENALL (METSU MW R X-RAY IN USE DT) LITHONIA (LGM P W 1 R 120-277 SW16 X-RAY IN USE) CHLORIDE (AMS GW X-RAY IN USE RFR) EMERGENSEE (SEEKEL-1-G-C-A-CUST-OM-XRAY IN USE) DUAL-LITE (EVE) BARON (84)
(FG22)	DESCRIPTION: 2' X 2' LED FLAT PANEL, GRID LAY-IN MOUNTING: CEILING, RECESSED FINISH: SCBA OPTICS: - OPTIONS: - EM: -	LENGTH: 2' - 0" WIDTH: 2' - 0" DEPTH: -	3,400		3500K		0-10V DIMMING (1%)	120/277	40	DAYBRITE (2PF238L840WDSUNV DIM) LITHONIA (EPANL) TRULY GREEN SOLUTIONS (88240-35-5-F) COLUMBIA (CBT22)
(FG24)	DESCRIPTION: 2' X 4' LED FLAT PANEL, GRID LAY-IN MOUNTING: CEILING, RECESSED FINISH: SCBA OPTICS: - OPTIONS: - EM: -	LENGTH: 4' - 0" WIDTH: 2' - 0" DEPTH: -	4,300		4000K		0-10V DIMMING (1%)	120/277	50	DAYBRITE (2PF243L8354DSUNV DIM) LITHONIA (EPANL) TRULY GREEN SOLUTIONS (88240-35-5-F) COLUMBIA (CBT24)
(LT)	DESCRIPTION: LINEAR, CONTINUOUS LENGTH TAPE LIGHT W/ CHANNEL AND SEAMLESS WHITE LENS MOUNTING: SURFACE FINISH: SILVER OPTICS: - OPTIONS: - EM: -	LENGTH: 5' 7" WIDTH: 0.75" DEPTH: 0.5"	200		3500K	80		120/277	18	KELVIK (8924XX-DL-35K-WH-CP-SV-ULV) ACOL (CHAS1) OMNILIGHT (GEN2)
(UC2)	DESCRIPTION: 2' LED UNDERCABINET LIGHT MOUNTING: SURFACE FINISH: SCBA OPTICS: - OPTIONS: - EM: -	LENGTH: 2' - 0" WIDTH: - DEPTH: -	600		4000K		ELV DIMMING	120/277	8	DAY-BRITE (LINES106E-L28-935-UNV-WHG-DIM) KENALL (AJUCLED-1-MW-11135K-24-277) AIREY-TOMPSON (13HC-N-35K-24-2-3-D11) KELVIK (UC22-3040 010V 120/277 WH)

LIGHTING/SPACE CONTROL TYPE SCHEDULE																				
WIRING LEGEND		APPROVED MANUFACTURERS	LIGHTING CONTROL ID	GENERAL NOTES																
<p>— LINE VOLTAGE WIRING</p> <p>- - - 0-10V WIRING</p> <p>----- CATSE CABLING</p> <p>— WIRING BY OTHERS</p> <p>○ TWP SEGMENT NETWORK CABLING</p>		<ol style="list-style-type: none"> WATTSTOPPER (BASIS OF DESIGN) NLIGHT HUBBELL BUILDING AUTOMATION GREENGATE 	<ol style="list-style-type: none"> # = NUMBER OF ZONES D = DIMMING, S = SWITCHING P = DAYLIGHT PHOTOCELL L = PLUG LOAD CONTROLLER # = INSTANCE 	<ol style="list-style-type: none"> COORDINATE INITIAL PROGRAMMING WITH OWNER AND MODIFY CONTROL TIMES AND OPERATION AS REQUESTED BY OWNER. PROVIDE FINE TUNING PROGRAMMING AND ADJUSTMENTS UPON REQUEST BY OWNER WITHIN FIRST 6 MONTHS AFTER SUBSTANTIAL COMPLETION. PROVIDE CUSTOMIZED ENGRAVED PERMANENT BUTTON LABELS ON EACH SWITCH, LABEL TO MATCH BUTTON LABEL ID OR AS DIRECTED BY OWNER. PART NUMBERS SHOWN ARE BASED ON WATTSTOPPER AS THE BASIS OF DESIGN. ALL APPROVED MANUFACTURERS ARE SUBJECT TO MEETING ALL FUNCTIONS AND CAPABILITIES OF THE BASIS OF DESIGN SYSTEM AND PRODUCTS. FAILURE TO MEET THESE SHALL REQUIRE THE CONTRACTOR TO PROVIDE A SYSTEM THAT DOES AT NOT ADDITIONAL COST. REFER TO PLANS FOR LOCATIONS AND QUANTITIES OF DEVICES. INSTALL ONE OF EACH CONTROL TYPE WITH PROGRAMMING, ADJUST, AND OBTAIN OWNERS APPROVAL PRIOR TO PROGRAMMING THE REMAINING CONTROLS. WIRING MAY VARY BETWEEN MANUFACTURERS. CONTRACTOR IS RESPONSIBLE FOR PROVIDING THE REQUIRED WIRING THAT WILL BOTH MEET THE MANUFACTURERS REQUIREMENTS AND MATCH WITH THE SHOWN SYSTEM. PROVIDE COMPLETE SHOP DRAWING SUBMITTALS INCLUDING OCCUPANCY SENSOR LAYOUT AND COVERAGE PATTERNS. PROVIDE ADDITIONAL SENSORS AS REQUIRED FOR 100% COVERAGE OF SPACES WITH OCCUPANCY SENSOR CONTROL. 																
ID	DETAIL	LIGHTS ON CONTROL	LIGHTS OFF CONTROL	LIGHTING CONTROL TYPE	DAYLIGHT SENSOR SETTING (FC)	TIME DELAY TO OFF (MIN.)	BAS AUX RELAY SIGNAL	PLUG LOAD CONTROLLER	NETWORKED CONTROLS	BUTTON_1	BUTTON_2	BUTTON_3	BUTTON_4	BUTTON_5	BUTTON_6	BUTTON_7	BUTTON_8	BUTTON_9	NOTES	
1D1				DIMMING 0-10V		15	RELAY CLOSED ON OCCUPANCY			FUNCTION: PRESS TOP-ON, HOLD TOP-RAISE LABEL ID: TOP-*										
2D1				DIMMING 0-10V		15	RELAY CLOSED ON OCCUPANCY			TOGGLE PRESS TOP-ON, PRESS BOTTOM-OFF, HOLD TOP-RAISE, HOLD BOTTOM-OFF/LOWER*	FUNCTION: PRESS- SCENE #01 ZONE "a" 75% DIMMING LABEL ID: "PRE #1"	FUNCTION: PRESS- SCENE #02 ZONE "b" 50% DIMMING LABEL ID: "PRE #2"	FUNCTION: PRESS- SELECT ZONE "a" FOR DIMMING LABEL ID: "ZONE a"	FUNCTION: PRESS- SELECT ZONE "b" FOR DIMMING LABEL ID: "ZONE b"						



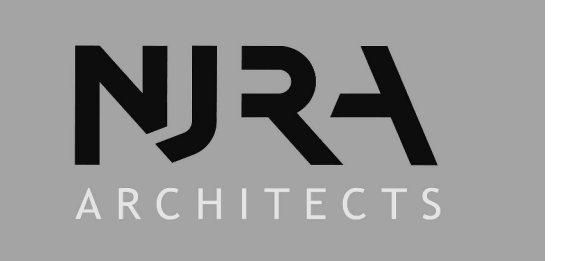
1 LEVEL 4 AUXILIARY PLAN
SCALE: 1/4" = 1'-0"

7/11/2024 5:21:55 AM

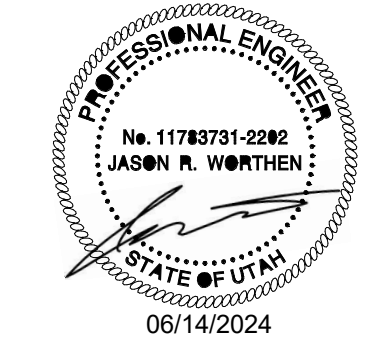
GENERAL SHEET NOTES

SHEET KEYNOTES

1 PROVIDE NEW 20A/1P CIRCUIT FROM EQUIPMENT BRANCH PANEL LOCATED IN MECHANICAL PENTHOUSE.



NJRA Architects, Inc.
5223 S. Ascension Way, Suite 350
Murray, Utah 84123
801.364.9259
www.njraarchitects.com



324 S. State St., Suite 400
Salt Lake City, UT 84111
800-678-7077
801-328-5151
fax: 801-328-5155
www.spectrum-engineers.com

Intermountain Health
McKay Dee Hospital
Mammography Scan Room Addition

4401 Harrison Blvd
Ogden, UT 84403

NJRA Project # 23220.00
Construction Documents Jun. 14, 2024
Addendum #1 07/01/24

**LEVEL 4
AUXILIARY
PLAN**

EY101