



# ADDENDUM

Date:	March 9, 2020
Project:	Mountainstar- Ogden Regional Medical Center <b>Psych Exam Remodel</b> 5475 South 500 East Ogden, Utah 84405
Addendum Number:	<b>1</b>

The Contractors submitting proposals on the above-captioned project shall be governed by the following addendum, changes and explanations to the drawings and specifications and shall submit their bids in accordance therewith.

Item Number	General Items Description
1	We have attached a copy of the sign-up sheet from the Pre-bid walkthrough held on Monday March 2 <sup>nd</sup> at 1:00 pm at ORMC for your reference.
2	Contractor is required to provide bond on this project. Please refer to the project manual for bid documents & forms from HCA and AIA for more information. Bid Bond required is 5% of the bid amount.
3	All permit fees shall be paid by the Owner. Do not include in the bid.
4	From the available information Contractor to note that roof deck height in the remodel area is about 13 feet from floor. This dimension is provided for reference only. As notified by Owner during pre-bid if contractor feels necessary contractor is encouraged to check out above ceiling space in the remodel area before bidding.
5	As discussed during pre-bid walkthrough, Contractor to note that the new remodel area is not on grade and there is lower level of the hospital for this portion that is existing in the material management area of the hospital in the "Supply Chain Director's office". Core drill existing concrete floor slab on metal deck to run Plumbing and drain lines to the new sink location. Remove portion of lay-in ceiling at the director's office as required at lower level to access and install the drain lines. Re-install ceiling tile and grid back in place after all work is completed to match adjacent existing. Coordinate work with Owner.
6	Contractor to note that the areas of the hospital adjacent to the remodel area will remain operational during construction. Off hour work if required may be arranged through owner's representative on a need basis.
7	Contractor to note that there is existing layer of Type- 'X' gypsum board sheathing above the ceiling at the underside of the roof joist for a rated roof assembly that shall remain in place where exists. Patch repair & caulk to original condition where punctured for installation of structural support, HVAC duct etc. and other work.
8	Mechanical Engineer VBFA has notified that contrary to the requirement of "Hydraulic Re-calcs" noted on sheet ME003 Plumbing & Fire protection specifications, Hydraulic Re-calculations will <b>NOT</b> be required for this project as it is estimated that change to hydraulic demand will be negligible due to the size of the project.
9	The project shall be inspected by the Department of Health during and after construction is completed. Contractor shall follow ICRA (Infection Control Risk assessment) guidelines



Item Number	General Items Description
	that is standard procedure for construction in a healthcare I2-Occupancy facility. Contractor shall build the dust partition as noted in the plans and provide walk off sticky mats at the doors. Contractor is also required to maintain negative pressure in the remodel area during construction to avoid dust and dirt migration into the adjacent occupied spaces of the hospital.
10	See attached Mechanical Addendum #1 from VBFA Engineers.
11	See attached Electrical Addendum #1 from Spectrum Engineers.

Sheet Number	Drawings
<b>Architectural Drawings</b>	
A111	Sheet A111- New & Demo Floor & Ceiling Plan sheet has been revised. See attached revised sheet with revisions clouded.
A112	Sheet A112- Finish floor Plan sheet has been revised. See attached revised sheet with revisions clouded.
A251	Sheet A251- Interior Elevation Sheet has been revised. See attached revised sheet with revisions clouded.
A506A	Sheet A506A- Details sheet has been revised. See attached revised sheet with revisions clouded.
A601A	Sheet A601A- Door Schedule sheet has been revised. See attached revised sheet with revisions clouded.
<b>Mechanical &amp; Plumbing Drawings</b>	
MH102	Sheet MH102- Mechanical Plan has been revised. See attached revised sheet with revisions clouded.
MH202	Sheet MH202- Mechanical Reflected Ceiling Plan has been revised. See attached sheet with revisions clouded.
MH601	Sheet MH601- Mechanical Schedules has been revised. See attached sheet with revisions clouded.
PP102	Sheet PP102- Plumbing Plans has been revised. See attached sheet with revisions clouded.
<b>Electrical Drawings</b>	
EP101	Sheet EP101- Level 1 Power Plan has been revised. See attached sheet with revisions clouded.

**Attachments:**

Documents: Pre-bid sign-up sheet, Mechanical Addendum #1 letter from VBFA Engineers, Electrical Addendum#1 letter from Spectrum Engineers.

Drawings: Revised Sheet A111, A112, A251, A506A, A601A, MH102, MH202, MH601, PP102 & EP601.

ORMC - PSYCH EXAM - Pre-Bid Walk

1:00 PM March 2, 2020

Name	Company	Email	Phone
Craig Saunders	Saunders Const.	saunderscoinc@tda.com	801-782-7830
Ryan Davis	Cameron Construction	RDAVIS@CameronConstruction.com	801-268-3586
Russ Clark	Stacey Construction	RCLARK@STACEYCL.COM	801-941-5081
Calvin	SQUIRES CONST	calvin@squires-construction.com	801-725-8407
SOURABH SINHA	NJRA	SOUSINE@NJRAARCHITECTS.COM	801-364-9259



Corporate Office  
Salt Lake City  
181 E. 5600 S. Suite 130  
Murray, UT 84107  
T 801 530 3148  
F 801 530 3150

## MEMORANDUM

**DATE:** March 9, 2020

**TO:** Sourabh Sinha  
NJRA Architects

**FROM:** Kevin McEntire

**PROJECT NO.** 19607

**PROJECT:** ORMC Psych Exam Remodel

**RE:** Addendum #1

St. George  
230 N. 1680 E.  
Building V  
St. George, UT 84770  
T 435 674 4800  
F 435 674 2708

Logan  
40 W. Cache Valley Blvd.  
Building 1, Suite B  
Logan, UT 84341  
T 435 752 5081  
F 435 752 0335

Arizona  
1602 S. Priest Drive  
Suite #103  
Tempe, AZ 85281  
T 480 889 5075  
F 480 889 5076

---

The following changes have been made to the mechanical drawings as part of addendum #1:

1. Sheet MH102 – Psych Exam Mechanical Plans
  - a. Keyed notes #3 & 5 have been updated to call for the existing 24x24 supply diffuser in Patient Toilet A113 to be removed and replaced with a new 12x24 supply diffuser.
  - b. Psych Exam Mechanical Plan - Patient Toilet A113
    - i. The supply diffuser in this room is now called out as a new CD-2 diffuser.
2. Sheet MH202 – Psych Exam Reflected Ceiling Plans
  - a. Psych Exam Reflected Ceiling Plan - Patient Toilet A113
    - i. The new CD-2 supply diffuser is now shown in its new location in this room.
3. Sheet MH601 – Mechanical Schedules
  - a. Grilles, Registers, and Diffusers
    - i. Diffuser CD-2 has been added to this schedule.
4. Sheet PP102 – Psych Exam Plumbing Plans
  - a. Keyed notes #1, 4, & 7 have been updated to call for core drilling in lieu of saw cutting to install the new waste piping. These notes now also explain that the waste piping work will need to be done in the ceiling of the floor below.

### PRINCIPALS

**Mechanical:** Kim P. Harris, PE | Richard G. Reeder, PE, LEED AP BD+C | Byron R. Torgersen, PE | Jeffrey S. Watkins, PE | Donald K. Bradshaw, PE, CPD | Wade W. Bennion, PE, LEED AP | Steven T. Shepherd, PE, LEED AP | Benjamin L. Davis, PE | Ladd M. Birch, PE | Michael S. Mooney | Brad W. Rosenhan, PE | Ray D. Vernon, PE, LEED AP BD+C | Jed H. Lyman, PE | Scot E. Muir, PE, LEED AP BD+C | Brad J. Welch, PE, LEED GA, | J. Howard Van Boerum, PE, FACEC (emeritus) | John D. Frank, PE (emeritus)

**Electrical:** Ryan C. Van Voast, PE

**Civil and Fire Protection:** David P. Baranowski, PE



**SPECTRUM**  
ENGINEERS

### Addendum #1

**Project:** ORMC ED Psych Exam Room Remodel    **From:** Jason Worthen  
**Project No:** 20191105    **Date:** March 06, 2020

---

#### DISCIPLINES

Mechanical Engineering  
Electrical Engineering  
Technology Design  
Acoustical Engineering  
Lighting Design  
Theatre Design  
Fire Protection Engineering  
Building Commissioning

### DRAWINGS

#### EP101 (See attached sheet)

1. Moved the power and data for computer to the South wall.

#### CENTERS OF ENGINEERING EXCELLENCE

Healthcare  
Higher Education  
K-12 Education  
Government  
Houses of Worship  
Special Projects

#### SALT LAKE CITY

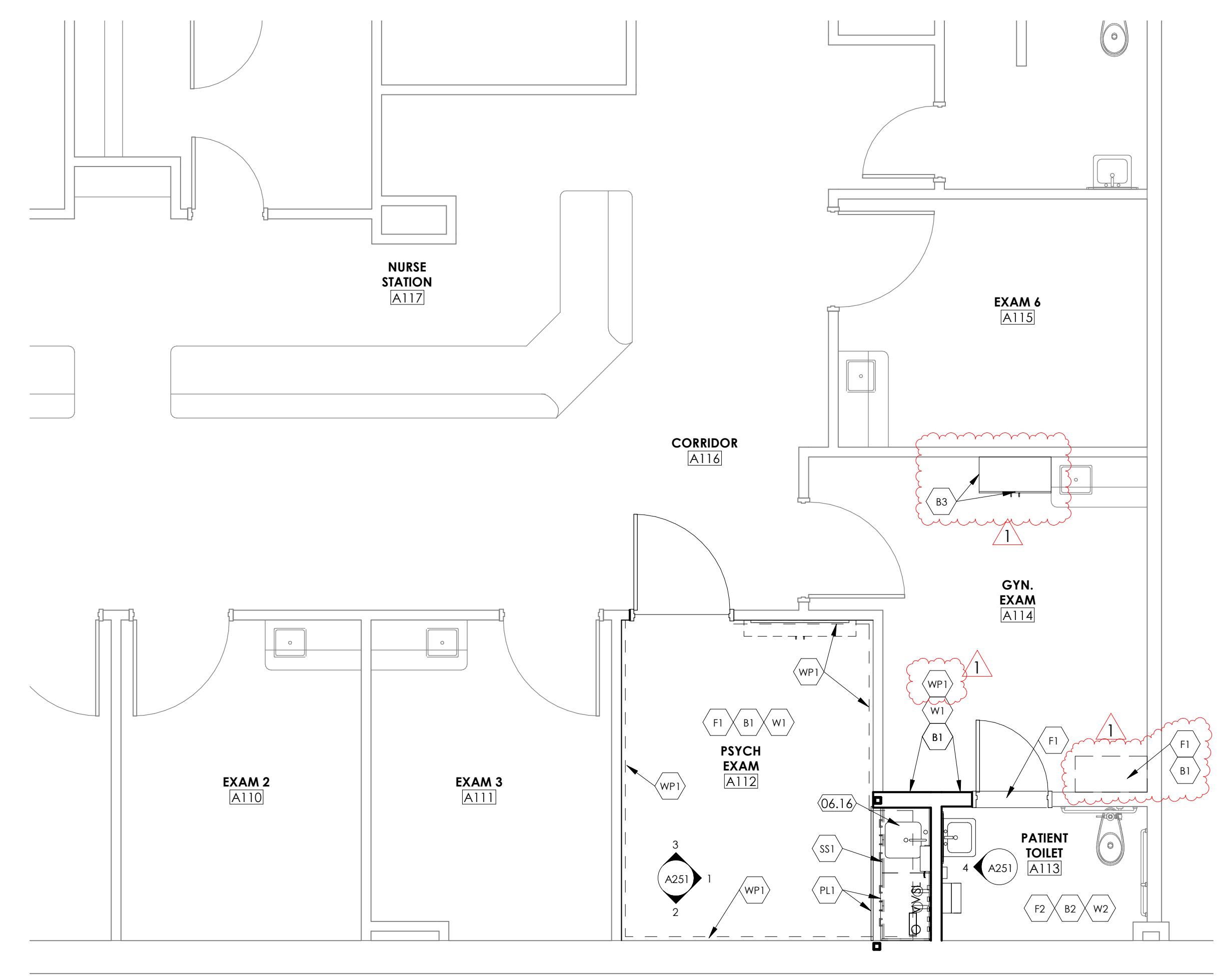
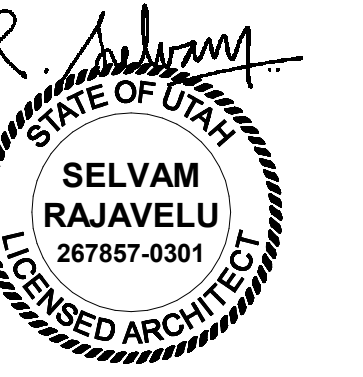
324 S. State Street  
Suite 400  
Salt Lake City, UT 84111  
phone: 801-328-5151  
fax: 801-328-5155

#### PHOENIX

1501 W. Fountainhead Parkway  
Suite 340  
Tempe, AZ 85282  
phone: 480-621-3444  
fax: 480-621-3445

www.spectrum-engineers.com  
800-678-7077





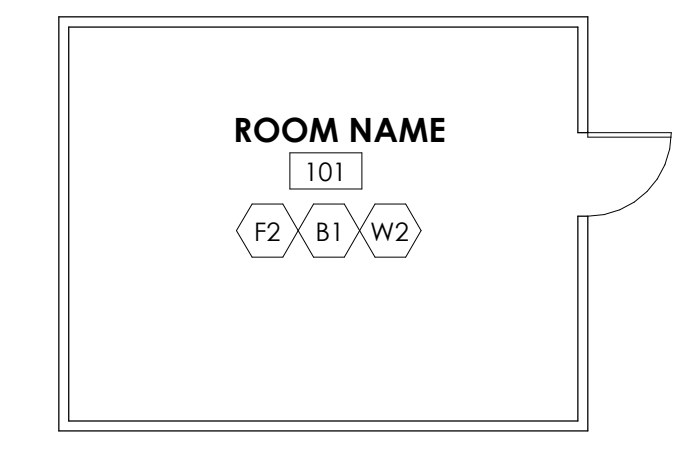
1 Finish Floor Plan Level 1 - Overall  
SCALE: 1/4" = 1'-0"

**KEYED NOTES**

06.16 SOLID SURFACE INTEGRAL SINK. BASIS OF DESIGN: SAMSUNG STARON A1181 SINK, COLOR 'BRIGHT WHITE' BW010. FIELD VERIFY TO MATCH HOSPITAL STANDARD. SEE PLUMBING DRAWINGS FOR PLUMBING LINES, FAUCET AND OTHER REQUIREMENTS.

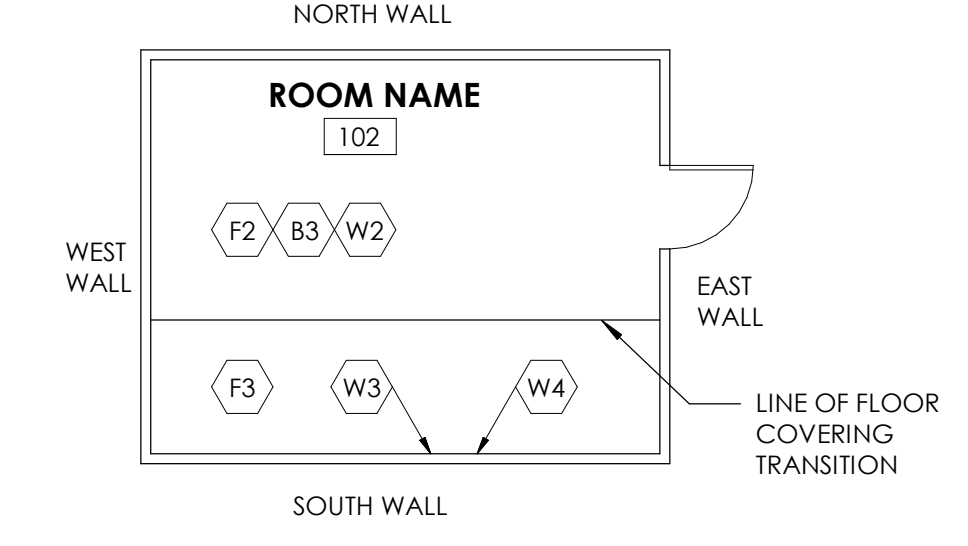
**FINISH PLAN - SAMPLE LAYOUT**

**SAMPLE LAYOUT 1**



**NOTE:** AS INDICATED IN ROOM NUMBER 101, MAJORITY OF THE ROOMS IN THE PROJECT SHALL HAVE A SINGLE TYPE OF FLOOR FINISH, WALL BASE AND WALL FINISH. WALL FINISH INDICATED AS "W2" SHALL APPLY TO ALL FOUR WALLS FROM FLOOR TO CEILING.

**SAMPLE LAYOUT 2**



**NOTE:** AS INDICATED IN ROOM NUMBER 102, SOME ROOMS SHALL HAVE MULTIPLE FLOOR AND WALL FINISHES. SEE GENERAL NOTE "C" ON SHEET A603A FOR FLOOR COVERING TRANSITIONS. THE WALL FINISH INDICATED AS "W2" IN THE ROOM (WITHOUT AN ARROW POINTING TO ANY SPECIFIC WALL) SHALL APPLY TO THE WEST, NORTH AND EAST WALL, WHERE WALL FINISHES ARE INDICATED WITH AN ARROW POINTING TO THE SOUTH SIDE. WALL SHALL HAVE MULTIPLE FINISHES SUCH AS "W3" AND "W4". SEE INTERIOR ELEVATIONS FOR TRANSITION DETAILS BETWEEN "W3" AND "W4".

**GENERAL NOTES**

- A. SEE SHEET G003 AND G005 FOR SYMBOLS, GENERAL NOTES AND LEGEND.
- B. SEE SHEET A505A FOR CABINET LEGEND.
- C. SEE SHEET A601A FOR DOOR SCHEDULE.
- D. SEE SHEET A602A FOR WINDOW SCHEDULE.
- E. SEE SHEET A603A FOR FINISH SCHEDULE AND GENERAL NOTES.

**FINISH SCHEDULE**

TAG	FINISH TYPE	SIZE	MATERIAL DESCRIPTION	MANUFACTURER	STYLE	MODEL #	COLOR	COMMENTS
F1	FLOOR FINISH		HOMOGENEOUS SHEET VINYL	MANNINGTON COMMERCIAL	-	-	-	1
F2	FLOOR FINISH		CERAMIC TILE (EXISTING)	DALTILE	-	-	-	4
B1	WALL BASE	4" HIGH	COVERED HOMOGENEOUS SHEET VINYL	MANNINGTON COMMERCIAL	-	-	-	1
B2	WALL BASE	4" HIGH	COVERED CERAMIC TILE	DALTILE	-	-	-	2,5
B3	WALL BASE	4" HIGH	RUBBER BASE	ROPPE	-	-	-	1
W1	WALL FINISH		PAINT	SHERWIN WILLIAMS	-	-	-	1
W2	WALL FINISH		PAINT - EPOXY TYPE	SHERWIN WILLIAMS	-	-	-	2
WP1	WALL PROTECTION		WAINSCOT PANEL 0.06" THICK RIGID VINYL	CONSTRUCTION SPECIALTIES ACROVYN	-	-	-	3
SS1	SOLID SURFACE		SOLID SURFACE (COUNTERTOP)	CORIAN SOLID SURFACE	-	-	-	1
PL1	PLASTIC LAMINATE FINISH		PLASTIC LAMINATE (VERTICAL) CABINET.	WILSONART	-	-	-	1

**COMMENTS**

1. NEW FINISH TO MATCH ADJACENT EXISTING EXAM ROOMS.
2. NEW FINISH TO MATCH EXISTING RESTROOM.
3. WALL PROTECTION WAINSCOT TO SPAN FROM TOP OF BASE TO MATCH HEIGHT IN ADJACENT EXISTING EXAM ROOMS.
4. EXISTING CERAMIC FLOOR TILE TO RENAIL, PATCH & REPAIR AS REQUIRED TO MATCH WITH ADJACENT EXISTING.
5. NEW CERAMIC TILE BASE REQUIRED AT NEW WALL LOCATION ONLY.

**GENERAL NOTES**

- A. BASIS-OF-DESIGN FOR FINISHES: FINISHES INDICATED ON THE FINISH SCHEDULE ARE BASED ON THE NAMED MANUFACTURER AND THEIR PRODUCTS. SUBJECT TO COMPLIANCE WITH REQUIREMENTS, PROVIDE THE NAMED PRODUCT OR A COMPARABLE PRODUCT BY ONE OF THE APPROVED MANUFACTURERS LISTED IN THE PROJECT MANUAL. SEE RELEVANT SPECIFICATION SECTION.
- B. SEE "SAMPLE LAYOUTS" INDICATED ON FINISH PLANS FOR CLARIFICATION ON HOW DIFFERENT TYPES OF REQUIRED FINISHES ARE INDICATED WITH FINISH TAGS FOR FLOORS, WALLS, MISCELLANEOUS SURFACE, ETC. SEE FINISH FLOOR PLANS FOR REQUIRED FINISHES (INDICATED WITH FINISH TAGS SUCH AS F1, B1, W1, ETC.).
- C. LINE OF TRANSITION BETWEEN DIFFERENT TYPES OF FLOOR COVERING IS INDICATED ON THE FINISH FLOOR PLANS. IN PLACES WHERE TWO DIFFERENT FLOOR COVERINGS ABUTS EACH OTHER, CONTRACTOR SHALL FOLLOW THE RELEVANT APPLICABLE "FLOOR COVERING TRANSITION DETAILS" INDICATED IN THIS CONSTRUCTION DOCUMENTS, WHERE TWO ROOMS ARE REQUIRED TO HAVE DIFFERENT FLOOR COVERINGS. LINE OF TRANSITION SHALL TYPICALLY OCCUR BELOW THE CENTER OF THE DOOR (LOCATED BETWEEN THE TWO ROOMS), AS THESE TRANSITION LINES ARE NOT INDICATED BELOW THE DOOR ON THE FINISH FLOOR PLANS, CONTRACTOR SHALL PROVIDE METAL TRANSITION STRIP (MANUFACTURED BY SCHLUTER OR EQUIVALENT) AS REQUIRED. AT EXTERIOR DOORS, PROVIDE ALUMINUM THRESHOLD MATCHING THE DOORWAY. FOR REMODEL PROJECTS, COORDINATE WITH DEMOLITION FLOOR PLAN AND NEW FLOOR PLAN TO DETERMINE WHERE NEW ABUTS EXISTING FLOOR COVERING THAT IS SCHEDULED TO REMAIN.
- D. LINE OF TRANSITION BETWEEN DIFFERENT TYPES OF WALL FINISH IS INDICATED ON THE INTERIOR ELEVATIONS AND FINISH FLOOR PLANS. FOR REQUIRED WALL PROTECTION TYPE (INDICATED WITH TAG WP1, WP2, ETC.), ON WALLS. COORDINATE WITH FINISH FLOOR PLANS AND INTERIOR ELEVATIONS.
- E. THERE ARE MISCELLANEOUS SURFACES THAT ARE EXPOSED AND WILL REQUIRE A FINISH. SUCH MISCELLANEOUS SURFACES ARE INDICATED IN THE DRAWINGS WITH FINISH TAGS SUCH AS MS1, MS2, ETC.
- F. PAINT ALL EXPOSED VISIBLE ITEMS SUCH AS METAL DECK, STEEL ANGLES, STEEL BEAMS, STEEL TRUSSES, MISC. STEEL ITEMS, PIPES, CONDUITS, ETC. UNLESS SPECIFICALLY NOTED AS A SURFACE NOT TO BE PAINTED, OR IF NATURAL FINISH IS REQUIRED. PAINT SURFACES USING FIELD COLORS AND ACCENT COLORS SPECIFIED BY THE ARCHITECT. DO NOT PAINT COLETTED SURFACES, FINISHED METAL SURFACES, OPERATING PARTS, AND PRE-FINISHED ITEMS. VERIFY PAINTING SURFACE (SUCH AS STEEL, CONCRETE, MASONRY, GYPSUM BOARD, WOOD, ETC.) AND USE THE APPROPRIATE PAINT AND METHOD INDICATED IN THE PROJECT MANUAL UNDER RELEVANT SPECIFICATION SECTION. ALL HOLLOW METAL DOOR AND WINDOW FRAMES SHALL BE PAINTED. USE SEMI-GLOSS FINISH ON DOOR FRAMES.
- G. IN ROOMS AND AREAS WHERE GYPSUM BOARD CEILING IS INDICATED, PAINT CEILING WITH THE SAME COLOR AND TYPE AS ADJACENT WALLS. IN WET ROOMS (LIKE RESTROOM, KITCHEN, ETC.) WHERE EPOXY PAINT IS INDICATED AS A REQUIREMENT ON WALLS, PAINT CEILING AND SOFFITS WITH EPOXY TYPE PAINT. ALL GYPSUM BOARD SOFFITS SHALL BE PAINTED. COORDINATE ACCENT COLOR LOCATIONS WITH ARCHITECT WHEREVER INDICATED.
- H. SEE INTERIOR ELEVATIONS FOR PLASTIC LAMINATE FINISHES OVER CABINETS, COUNTERTOPS, WALLS, ETC. PLASTIC LAMINATE FINISHES ARE INDICATED AS PL1, PL2, ETC. COUNTERTOPS THAT ARE MONOLITHIC MATERIAL (SUCH AS SOLID SURFACE, QUARTZ, ETC. AND NOT PLASTIC LAMINATE WRAPPED), ARE INDICATED AS WM1, WM2, ETC.
- I. WHERE PORCELAIN AND/OR CERAMIC TILE FINISHES ARE INDICATED, PROVIDE METAL EDGE STRIPS (MANUFACTURED BY SCHLUTER OR EQUIVALENT) AT ALL OUTSIDE VERTICAL CORNERS AND TOP OF WAINSCOT.
- J. IN ROOMS AND AREAS (SUCH AS TOILET ROOMS, SHOWERS, ETC.) WHERE CERAMIC OR PORCELAIN TILES ARE INDICATED FOR WALL AND FLOOR FINISH, INSTALL BOTTOM ROW OF WALL TILE FIRST PER DETAIL 1/A603B. PROVIDE QUARTZ THRESHOLD AT DOORS TO TOILET ROOMS THAT ARE USED BY MULTIPLE USERS. SEE DETAILS 3 & 4 SHEET A603B.
- K. WHERE GYPSUM BOARD WALL ABUTS MASONRY WALL, PROVIDE REVEAL AS PER DETAIL 2/A603B.

Ogden Regional Medical Center  
Psych Exam Remodel

5475 South 500 East  
Ogden, UT 84405

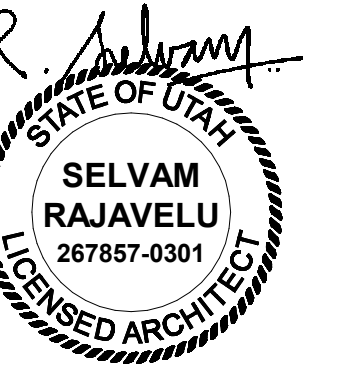
NJRA Project # 19301.00  
Construction Documents Feb 19, 2020  
1 Addendum #1 March 9, 2020

Psych Exam  
Finish Floor  
Plan

A112



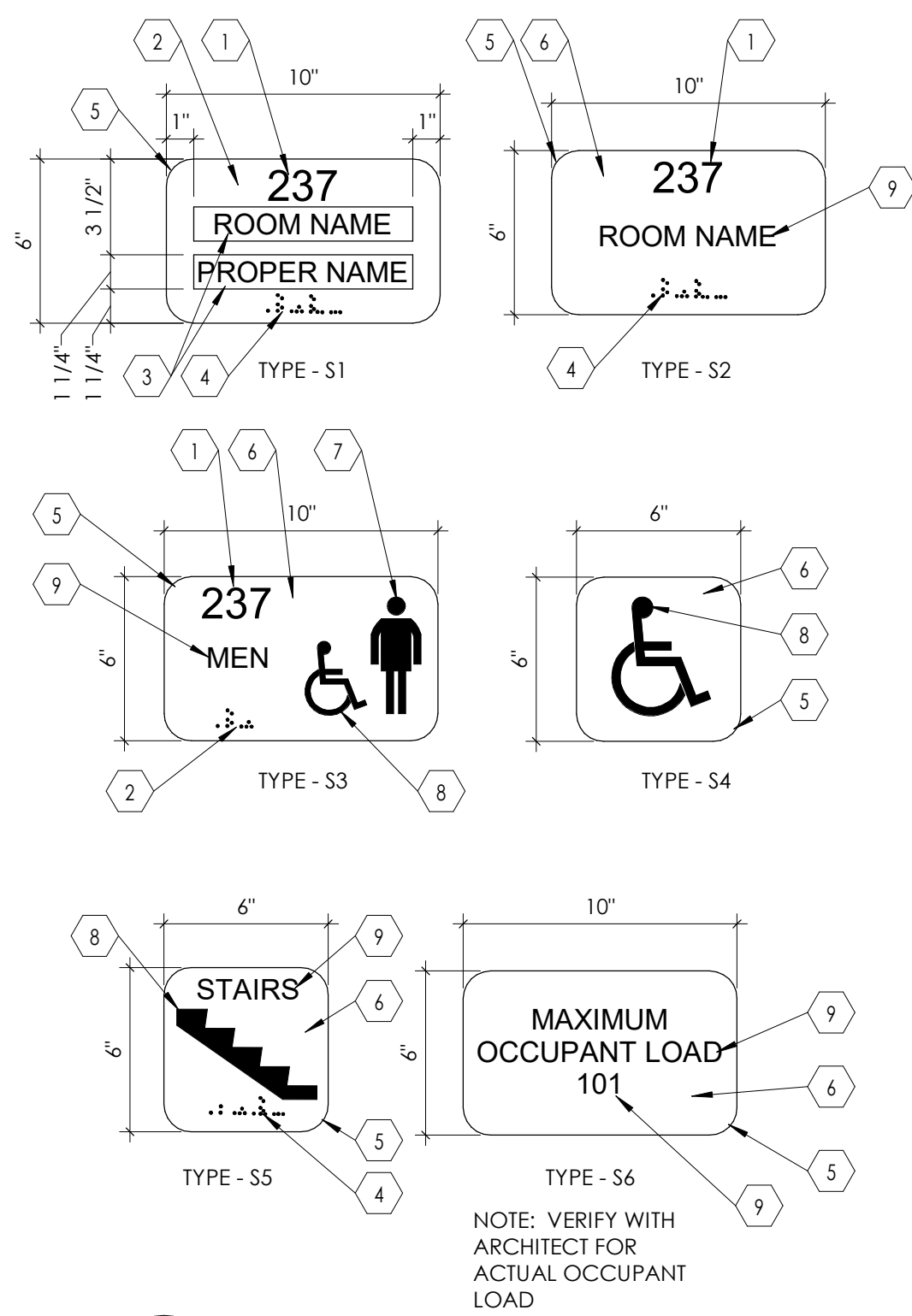




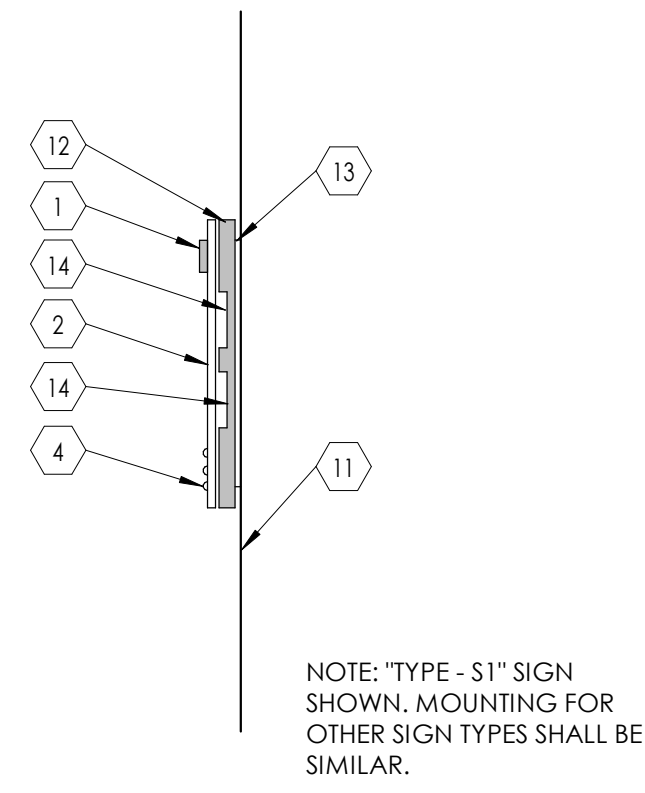
**KEYED NOTES**

- ROOM NUMBER (1/32" RAISED TEXT CHARACTERS, HELVETICA FONT, MATTE FINISHED OPAQUE ACRYLIC SHEET) ATTACHED TO FRONT PANEL.
- MATTE FINISHED OPAQUE ACRYLIC FRONT PANEL (WITH TRANSPARENT WINDOW) ATTACHED TO BASE PANEL.
- TRANSPARENT WINDOW FOR TEXT INSERT (HELVETICA FONT). TEXT INSERT SHALL BE FURNISHED AND INSTALLED BY SIGN CONTRACTOR.
- BRILLE CHARACTERS AS PER ADA (AMERICANS WITH DISABILITIES ACT) REQUIREMENTS DENOTING ROOM NUMBER AND NAME.
- RADIUS CORNER, 1" TYPICAL.
- MATTE FINISHED OPAQUE ACRYLIC FRONT PANEL ATTACHED TO BASE PANEL.
- PROVIDE APPROPRIATE SYMBOL FOR MEN, WOMEN, UNISEX, BOYS AND GIRLS TOILET ROOM AS OCCURS.
- PROVIDE APPROPRIATE SYMBOL FOR STAIR, DISABLED SIGN, ETC., AS INDICATED.
- ROOM NAME (1/32" RAISED TEXT CHARACTERS, HELVETICA FONT, MATTE FINISHED OPAQUE ACRYLIC SHEET) ATTACHED TO FRONT PANEL.
- PROVIDE DISABLED SYMBOL AS INDICATED IN THE SIGN FOR ALL ROOMS THAT ARE WHEEL CHAIR ACCESSIBLE.
- LINE OF WALL.
- MATTE FINISHED, OPAQUE ACRYLIC SHEET BASE PANEL ATTACHED TO SHIM PLATE.
- SHIM PLATE, ALUMINUM, 1/4" THICK, CONCEALED, WITH PRE-DRILLED HOLES FOR COUNTERSUNK FASTENERS, USE APPROPRIATE FASTENERS DEPENDING ON THE SUBSTRATE.
- RECESS 1/16" FOR TEXT INSERT, FOR SIGN "TYPE - S1" ONLY.
- SIGNAGE, O.F.O.I.
- SIGN AT ALL ACCESSIBLE LOCATION, O.F.O.I.
- DOOR FRAME, SEE DOOR SCHEDULE.
- DOOR, SEE DOOR SCHEDULE.
- OPENING IN WALL.
- LINE OF FLOOR.

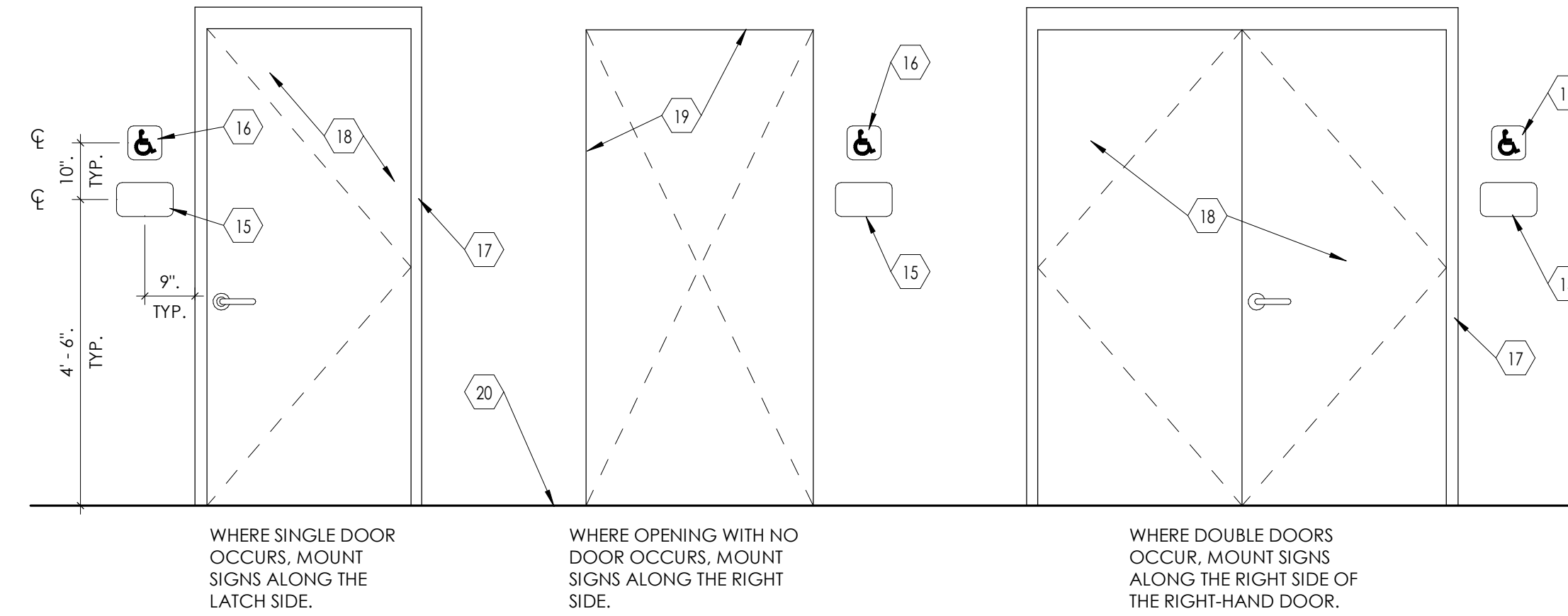
- NOTE:
- PROVIDE ROOM SIGN AT EACH DOORWAY OR A WALL OPENING LEADING TO A ROOM. SEE FINISH FLOOR PLAN FOR REQUIRED NUMBER OF SIGNS, SIGN TYPE, ROOM NAMES, ETC.
  - SIGN CONTRACTOR SHALL COORDINATE WITH OWNER AND PROVIDE TEXT INSERTS FOR OCCUPANTS PROPER NAME FOR ALL "TYPE S1" WALL SIGNS.
  - ALL COLORS SHALL BE SELECTED BY ARCHITECT AND MOUNTED ON WALL OR DOOR PER DETAIL 'B'.



**A Sign Types**  
SCALE: 2" = 1'-0"



**B Sign Mounting**  
SCALE: 3" = 1'-0"

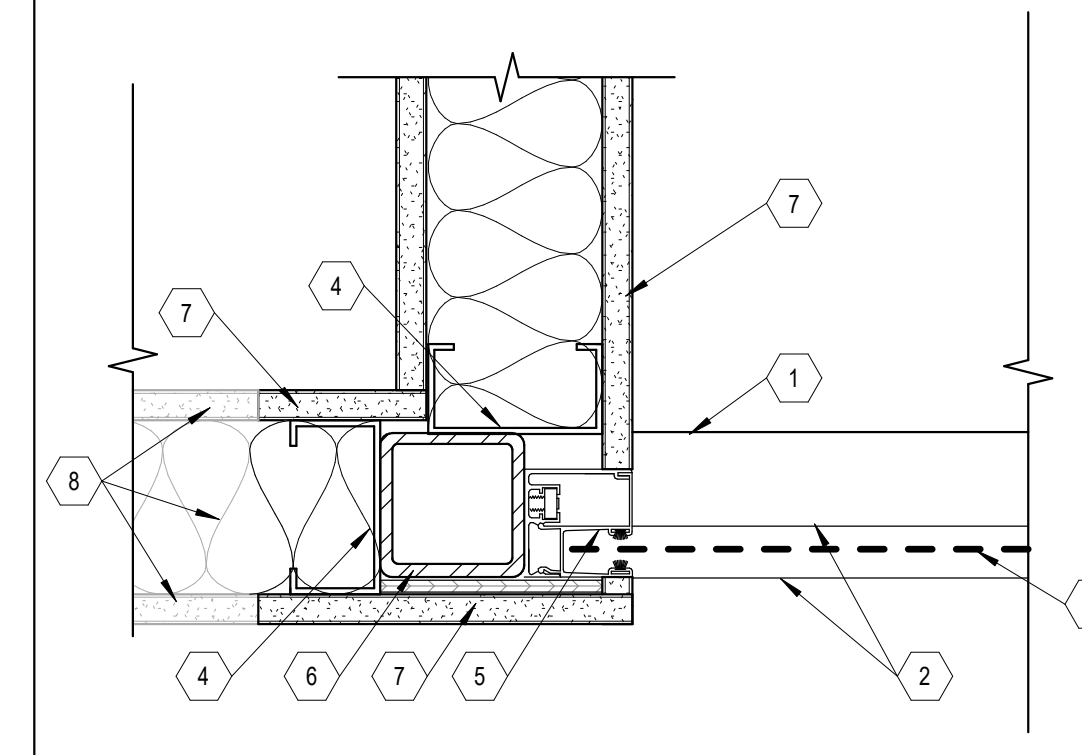


**C Sign Mounting Elevations**  
SCALE: 1/2" = 1'-0"

**1 Room Signage Detail**  
SCALE: N.T.S.

**KEY NOTES**

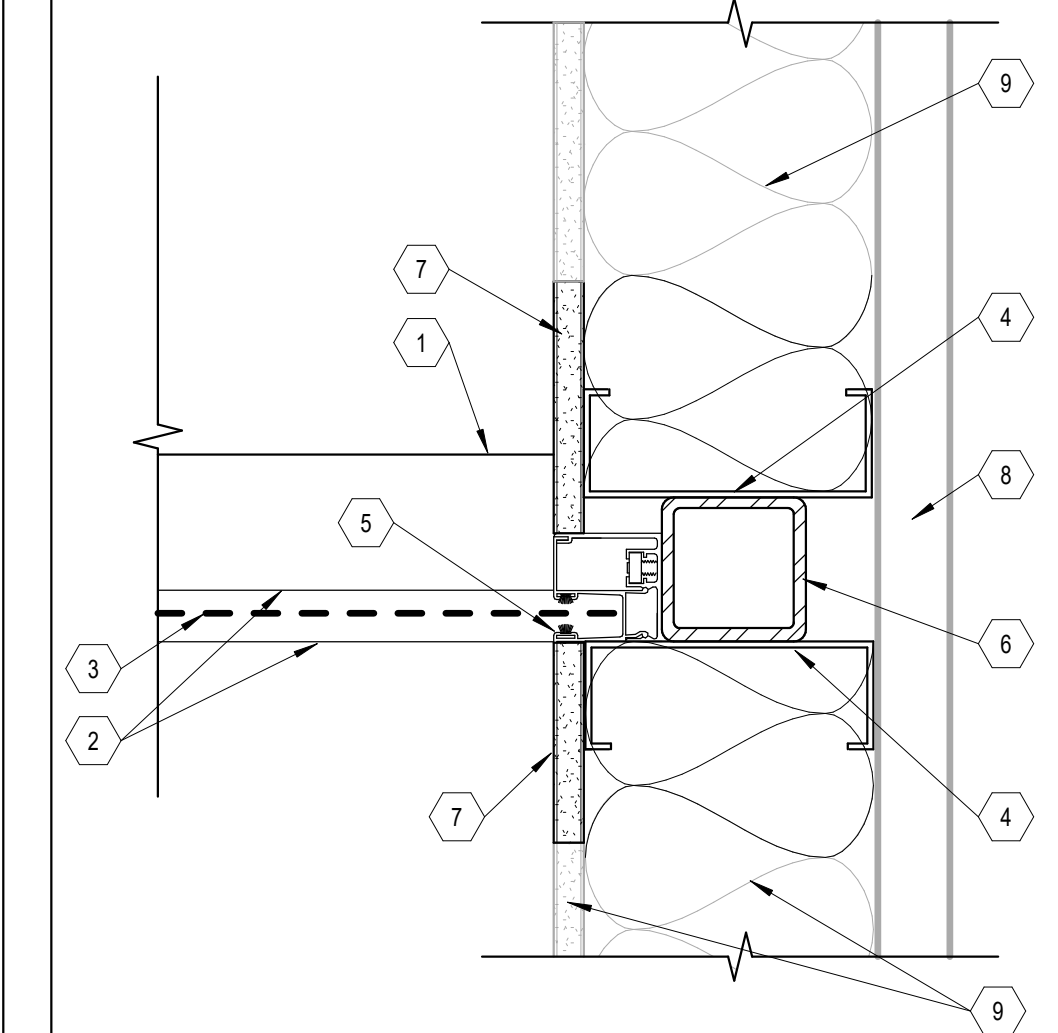
- SOLID SURFACE COUNTER. SEE FLOOR PLAN FOR MORE INFORMATION. SEE DETAIL 3/A506A.
- LINE INDICATES GYPSUM DOOR POCKET ABOVE.
- COILING ROLL UP DOOR. SEE FLOOR PLAN AND DOOR SCHEDULE.
- METAL STUD, 3 5/8" OR 6" THICK, 20 GAUGE AT 16" O.C. WITH BATT INSULATION. FIELD VERIFY AND MATCH EXISTING WALL.
- ALUMINUM GUIDES FOR ROLL UP DOOR.
- TUBE STEEL POST, 3" X 3" X 1/4" TUBE STEEL POST. SEE DETAIL 5/A506A FOR ATTACHMENT.
- ALUMINUM GUIDES FOR ROLL UP DOOR.
- TUBE STEEL POST, 3" X 3" X 1/4" TUBE STEEL POST. SEE DETAIL 5/A506A FOR ATTACHMENT.
- TYPE 'X' GYPSUM BOARD, 5/8" THICK, TYPICAL. PATCH, REPAIR TO MATCH EXISTING.
- EXISTING EXTERIOR FINISH TO REMAIN.
- EXISTING WALL ASSEMBLY TO REMAIN.



**2 Detail at Left Guide**  
SCALE: 3" = 1'-0"

**KEY NOTES**

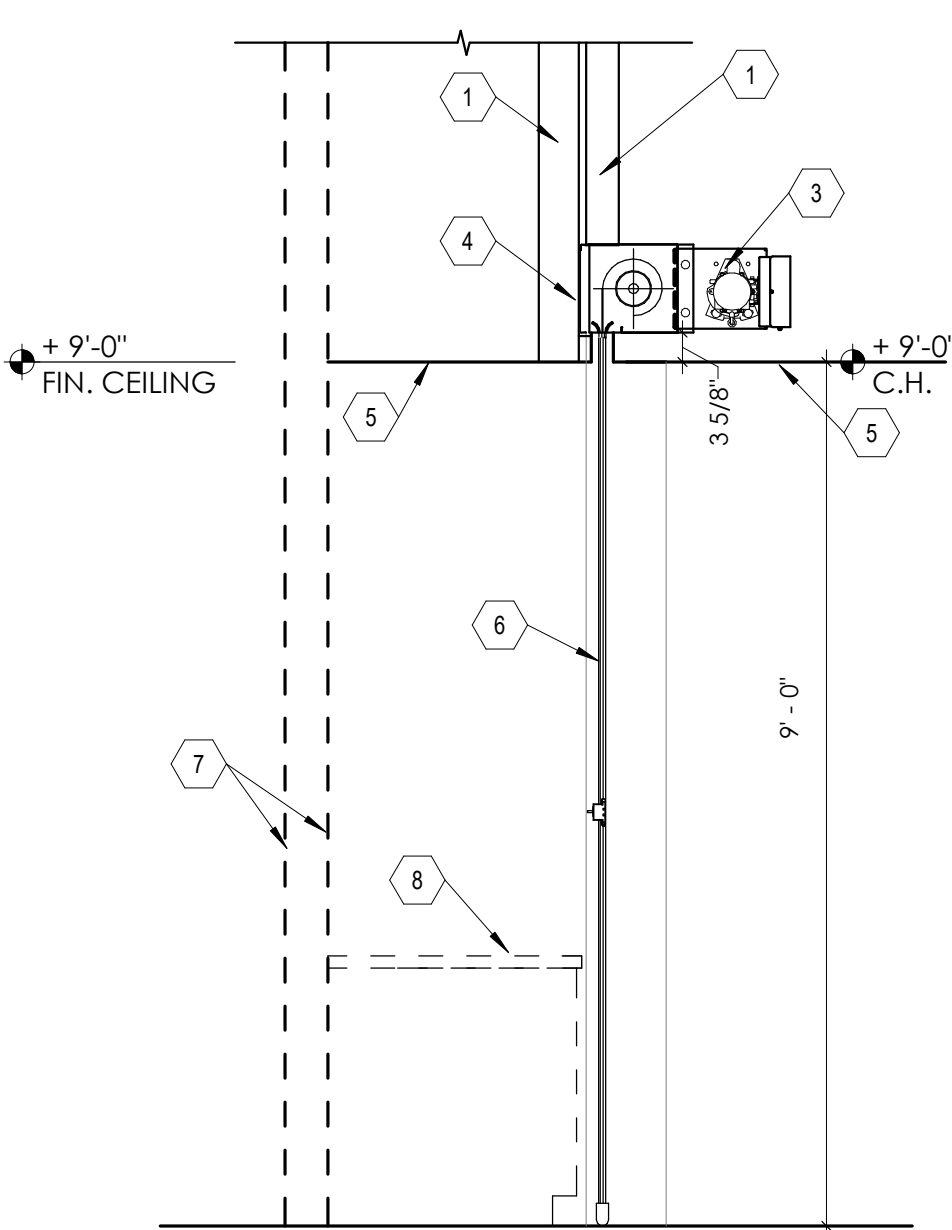
- SOLID SURFACE COUNTER. SEE FLOOR PLAN FOR MORE INFORMATION. SEE DETAIL 3/A506A.
- DASH LINE INDICATES GYPSUM DOOR POCKET ABOVE.
- COILING ROLL UP DOOR. SEE FLOOR PLAN FOR DETAILS.
- METAL STUD, 6" THICK, 20 GAUGE AT 16" O.C. WITH R-19 BATT INSULATION. FIELD VERIFY AND MATCH EXISTING WALL.
- ALUMINUM GUIDES FOR ROLL UP DOOR.
- TUBE STEEL POST, 3" X 3" X 1/4" TUBE STEEL POST. SEE DETAIL 5/A506A FOR ATTACHMENT.
- TYPE 'X' GYPSUM BOARD, 5/8" THICK, TYPICAL. PATCH, REPAIR TO MATCH EXISTING.
- EXISTING EXTERIOR FINISH TO REMAIN.
- EXISTING WALL ASSEMBLY TO REMAIN.



**3 Detail at Right Guide**  
SCALE: 3" = 1'-0"

**KEY NOTES**

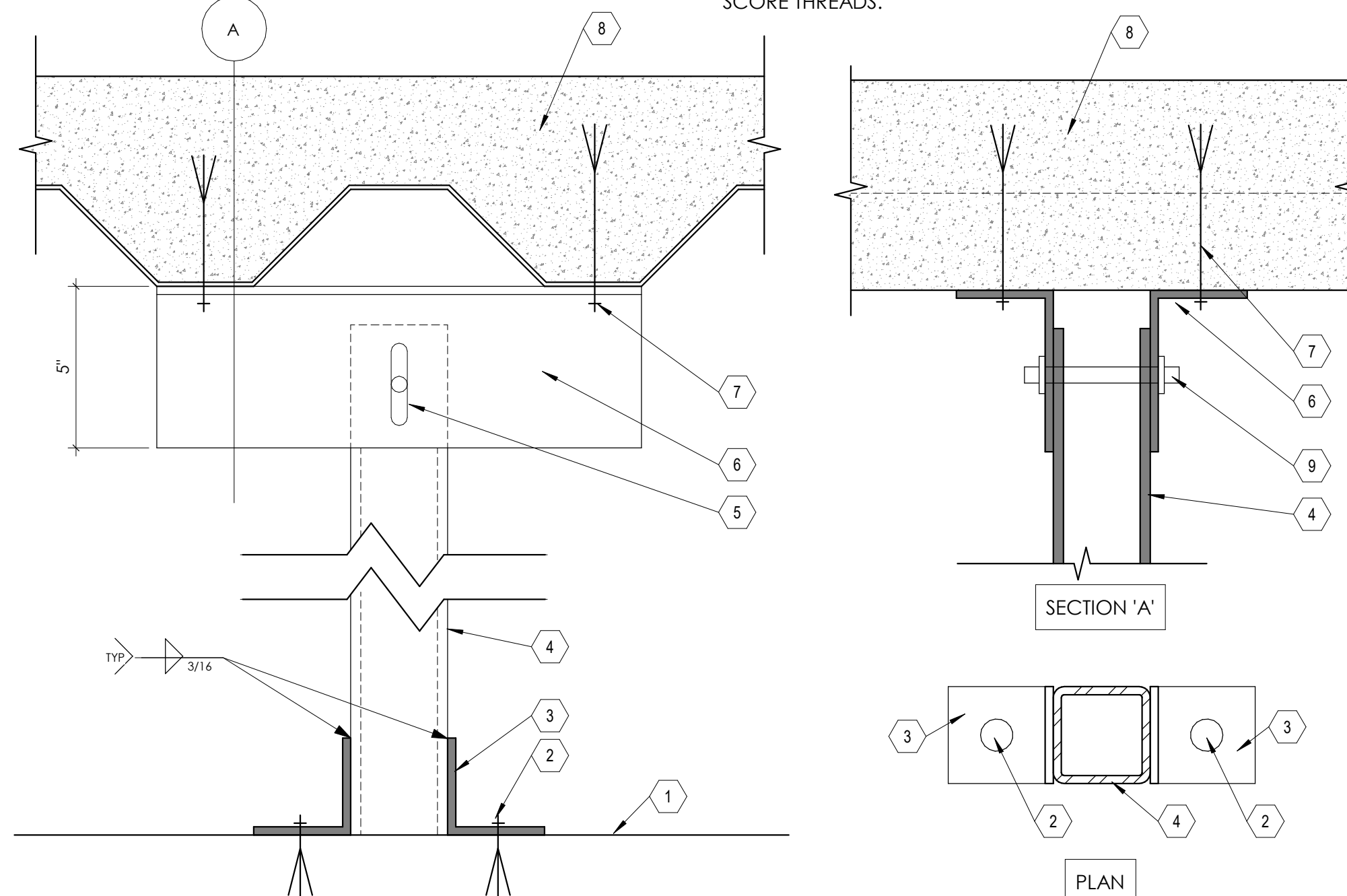
- NEW 3 5/8" METAL STUD FRAMED WALL ABOVE CEILING ANCHORED TO STRUCTURAL ABOVE. SEE WALL TYPE AND DETAILS SHEET FOR ANCHORAGE AND BRACING REQUIREMENTS. ANGLED CROSS BRACING TO BE ABOVE CEILING. WALL SHALL ALIGN WITH COILING DOOR OPENING. NEW DOOR HOOD SHALL ATTACH TO THE WALL.
- NOT USED.
- GALVANIZED STEEL HOOD WITH GALVANEX COATING SYSTEM.
- NEW 1 1/2" DEEP, 18 GAUGE, CONTINUOUS BACKING PLATE ATTACHED TO METAL STUDS WITH THREE #10 SHEET METAL SCREWS AT EACH STUD. CENTER BACKING ON HOOD. COORDINATE WITH COILING DOOR SUPPLIER.
- GYPSUM BOARD CEILING. COORDINATE WITH COILING DOOR SUPPLIER. SEE REFLECTED CEILING PLAN. PROVIDE ACCESS PANEL TO SERVICE DOOR AT THE CEILING TO MEET THE REQUIRED OF THE MANUFACTURER.
- MOTORIZED COILING ROLL UP DOOR. SEE FLOOR PLAN AND SPECIFICATIONS. SEE DETAIL 2/A506A, 3/A506A & 5/A506A FOR STRUCTURAL SUPPORT DETAILS. SEE ELECTRICAL DRAWINGS.
- DASHED LINE INDICATES WALL. SEE FLOOR PLAN AND WALL TYPES.
- SOLID SURFACE COUNTERTOP AND PLASTIC LAMINATE CABINET. SEE INTERIOR ELEVATIONS FOR MORE INFORMATION.



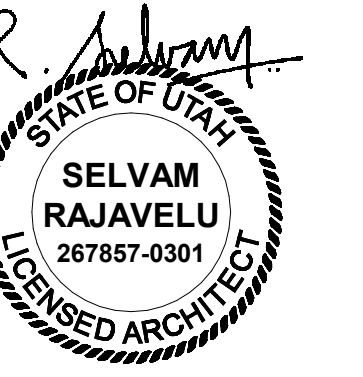
**4 Section Thru. Coiling Door**  
SCALE: 1/2" = 1'-0"

**KEY NOTES**

- EXISTING CONCRETE FLOOR SLAB ON METAL DECK.
- EXPANSION BOLT, 1/2" DIAMETER, EMBED BOLT 3".
- 1" SHAPED ANGLE 3" X 3" X 1/4" X 3" LONG TYP. (EACH SIDE)
- H.S.S 3" X 3" X 1/4".
- STANDARD HOLE IN ANGLE. 2 1/2" LONG SLOTTED HOLE IN H.S.S.
- 1" SHAPED ANGLE 5" X 3" X 1/4" X 1 1/2" LONG EACH SIDE WELDED TO METAL DECK ABOVE.
- EXPANSION BOLT, 1/2" DIAMETER, EMBED BOLT 3 1/2" TYP. ANCHOR TO ATTACH TO ROOF STRUCTURE ABOVE.
- EXISTING ROOF STRUCTURE AND METAL DECK ABOVE.
- 3/4" DIAMETER A307 BOLT. INSTALL NUT FINGER TIGHT AND SCORE THREADS.

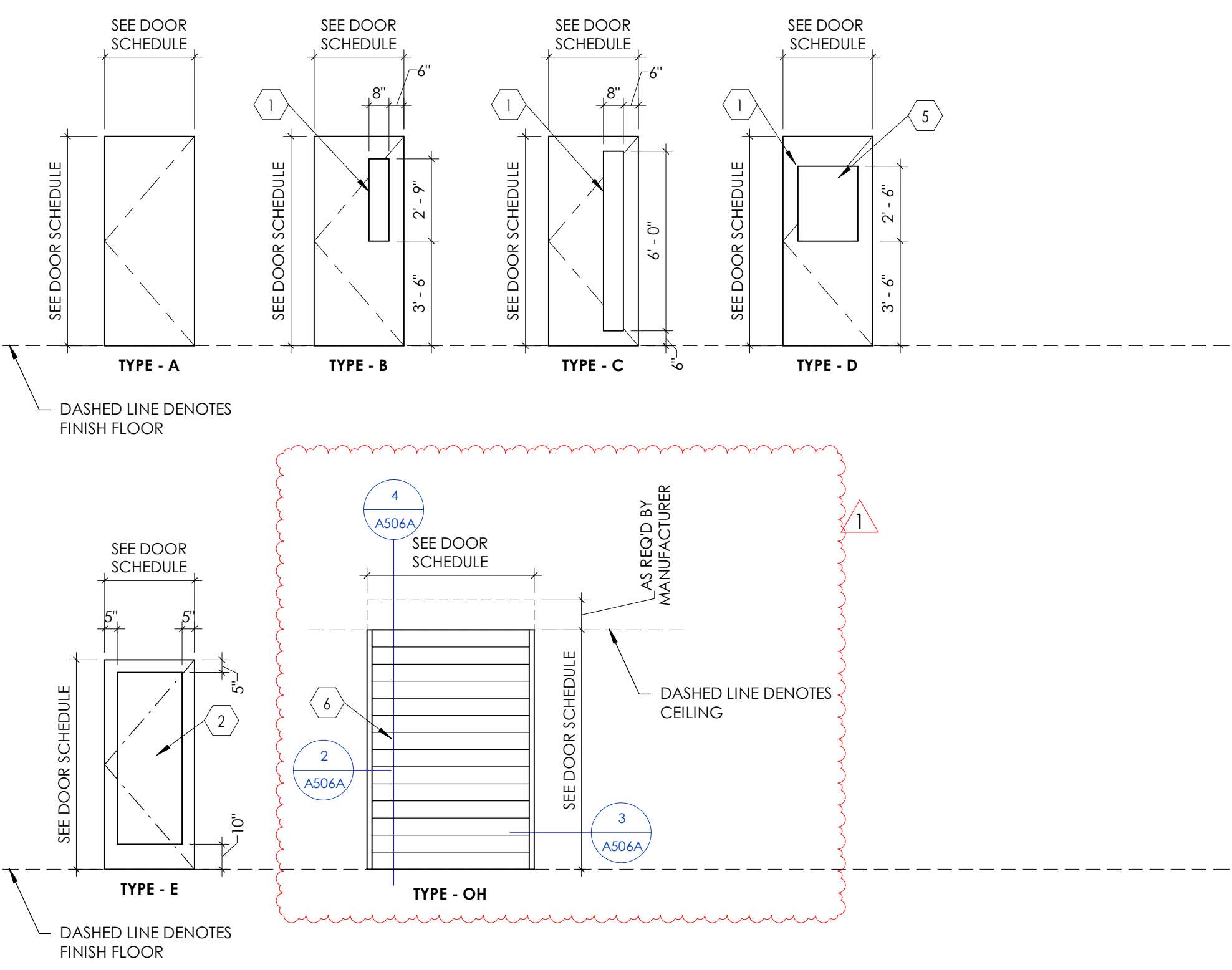


**5 Tubular Steel Connection**  
SCALE: 3" = 1'-0"



**KEYED NOTES**

- VISION PANEL, GLAZING IN VISION PANEL SHALL BE 1" THICK, CLEAR, LAMINATED, TEMPERED. GLAZING FOR WOOD DOOR, PROVIDE WOOD TRIM FRAME FLUSH WITH THE FACE OF THE DOOR. AROUND THE VISION PANEL OPENING, STAIN AND SPECIES OF WOOD TRIM SHALL MATCH WOOD DOOR. FOR HOLLOW METAL DOOR, PROVIDE METAL TRIM AROUND VISION PANEL. GLAZING SHALL BE FIRE RATED IF DOORS ARE REQUIRED TO BE FIRE RATED.
- FOR EXTERIOR DOORS OF THIS TYPE, GLAZING SHALL BE TINTED, INSULATED, TEMPERED, LOW E, AND 1" THICK. FOR INTERIOR DOORS OF THIS TYPE, GLAZING SHALL BE CLEAR, TEMPERED AND 1/4" THICK.
- STAINLESS STEEL WELDED WIRE MESH (15 GAUGE) ATTACHED TO DOOR, PROVIDE FRAME AROUND THE OPENING IN DOOR TO SECURE THE MESH IN PLACE.
- METAL LOUVER IN DOOR FOR VENTILATION.
- INTEGRAL BLIND REQUIRED IN GLAZING AT THIS DOOR WITH CONTROLS ON HALLWAY SIDE.
- MOTORIZED ALUMINUM ROLL UP DOOR, PROVIDE LOCK & REQUIRED DOOR HARDWARE. CONCEAL DOOR HOUSING & MOTOR ABOVE CEILING. SEE ELECTRICAL DRAWINGS, SECURED DOOR & HOUSING TO STRUCTURE ABOVE AS REQUIRED BY THE DOOR MANUFACTURER.



**1 Door Types** NOTE: REFER TO "DOOR SCHEDULE" TABLE FOR DOOR TYPES REQUIRED FOR THIS PROJECT. SOME DOOR TYPE ELEVATIONS INDICATED ABOVE, MAY NOT BE APPLICABLE TO THIS PROJECT.  
SCALE: 1/4" = 1'-0"

**DOOR SCHEDULE**

DOOR #	# OF PANELS	DOOR				SIZE		FRAME			DETAILS				DOOR #	FIRE RATING (MINUTES)	HARDWARE GROUP	COMMENTS
		W1	W2	HEIGHT	THICKNESS	MATERIAL	TYPE (1/A601A)	TYPE (2/A601A)	DEPTH	MATERIAL	JAMB	HEAD	THRESHOLD					
A112	1	4'-0"		7'-0"	1 3/4"	WD	D	1	5 7/8"	HM				A112		1		
A113	1	3'-0"		7'-0"	1 3/4"	WD	A	1	8 1/4"	HM				A113		2		
A129	MFR	5'-7"		9'-0"		ALUM	OH			ALUM				A129		MFR	1, 2	

- COMMENTS:
- MOTORIZED ALUMINUM ROLL UP COILING DOOR.
  - PROVIDE MANUFACTURER APPROVED ANTI-LIGATURE LOCK AND HARDWARE AT THIS DOOR.

**DOOR HARDWARE SCHEDULE**

**HARDWARE GROUP 1**

DOORS: A112

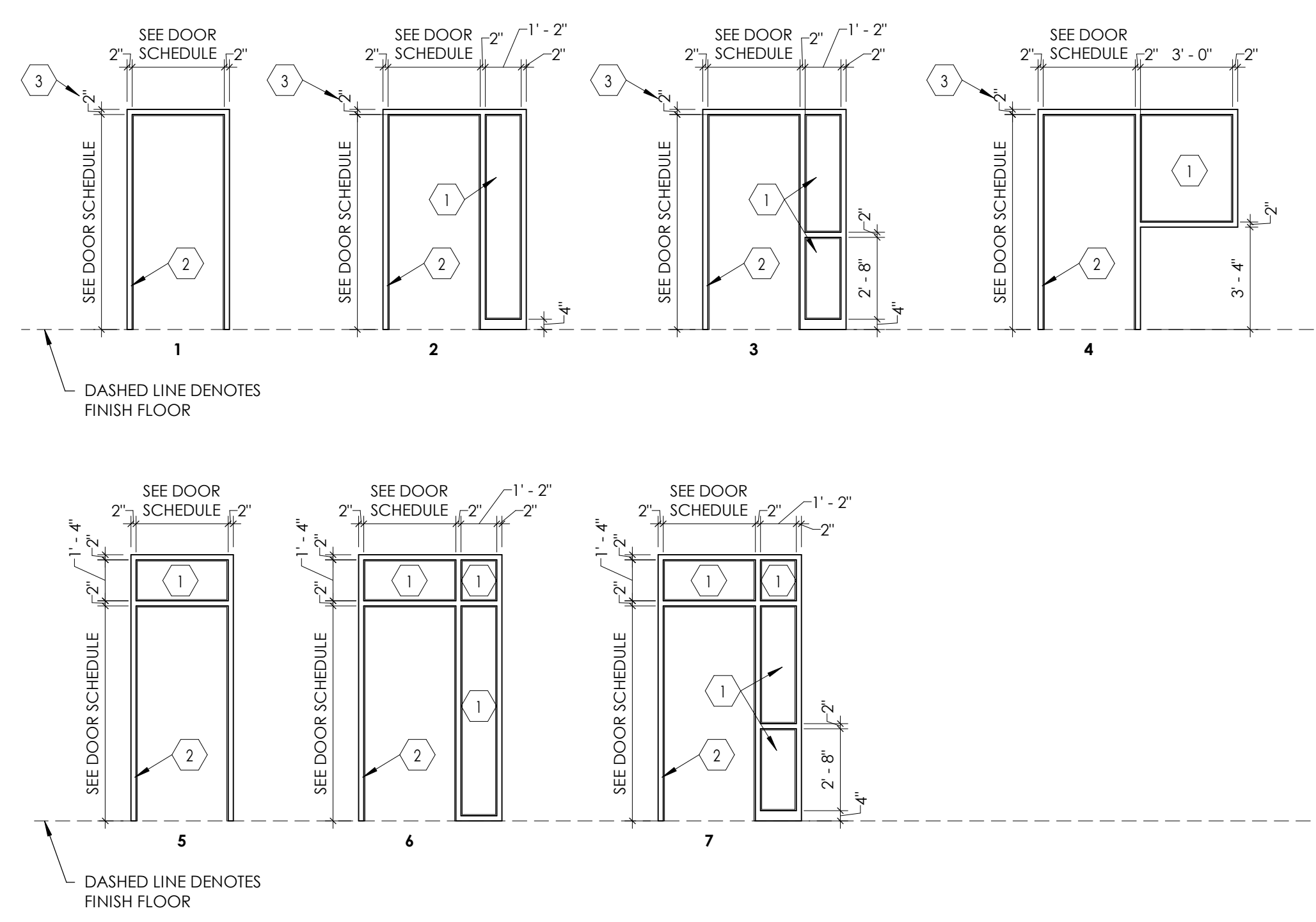
QTY	HARDWARE	MODEL	
1	CONTINUOUS HINGE	FM300	US26D
1	PRIVACY SET LOCKSET	1955S x L	US32D
1	DOOR CLOSER	4040 XP	689
1	KICK PLATE	12" x 2" LDW	630
1	SILENCERS	608	

**HARDWARE GROUP 2**

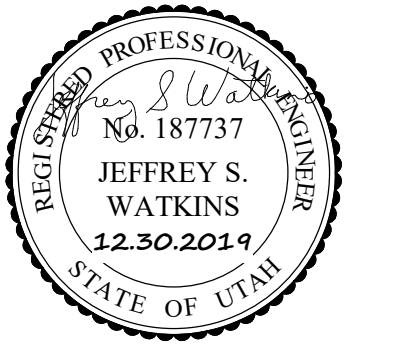
DOORS: A113  
RE-USE EXISTING HARDWARE.

**KEYED NOTES**

- GLAZING SHALL BE CLEAR, TEMPERED, AND 1/4" THICK.
- DOOR FRAME, SEE DOOR SCHEDULE.
- WHERE DOOR OCCURS AT MASONRY WALL (8" HIGH, C.M.U. BLOCKS), AND WITH A TYPICAL DOOR HEIGHT OF 7'-0", USE 4" FRAME AS FRAME HEAD INSTEAD OF THE STANDARD 2" FRAME.

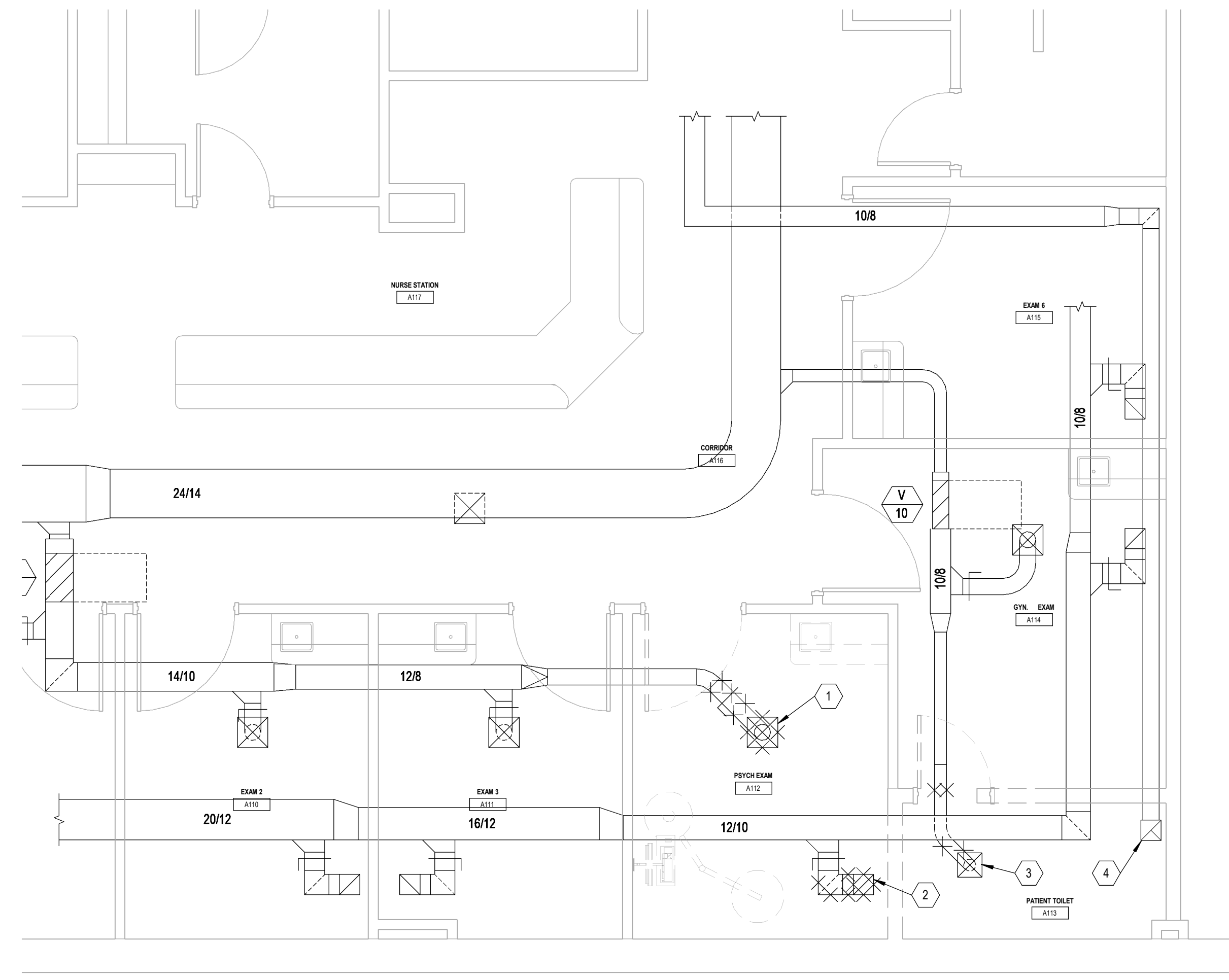


**2 Frame Types** NOTE: REFER TO "DOOR SCHEDULE" FOR FRAME TYPES REQUIRED FOR THIS PROJECT. SOME FRAME TYPE ELEVATIONS INDICATED ABOVE MAY NOT BE APPLICABLE TO THIS PROJECT.  
SCALE: 1/4" = 1'-0"

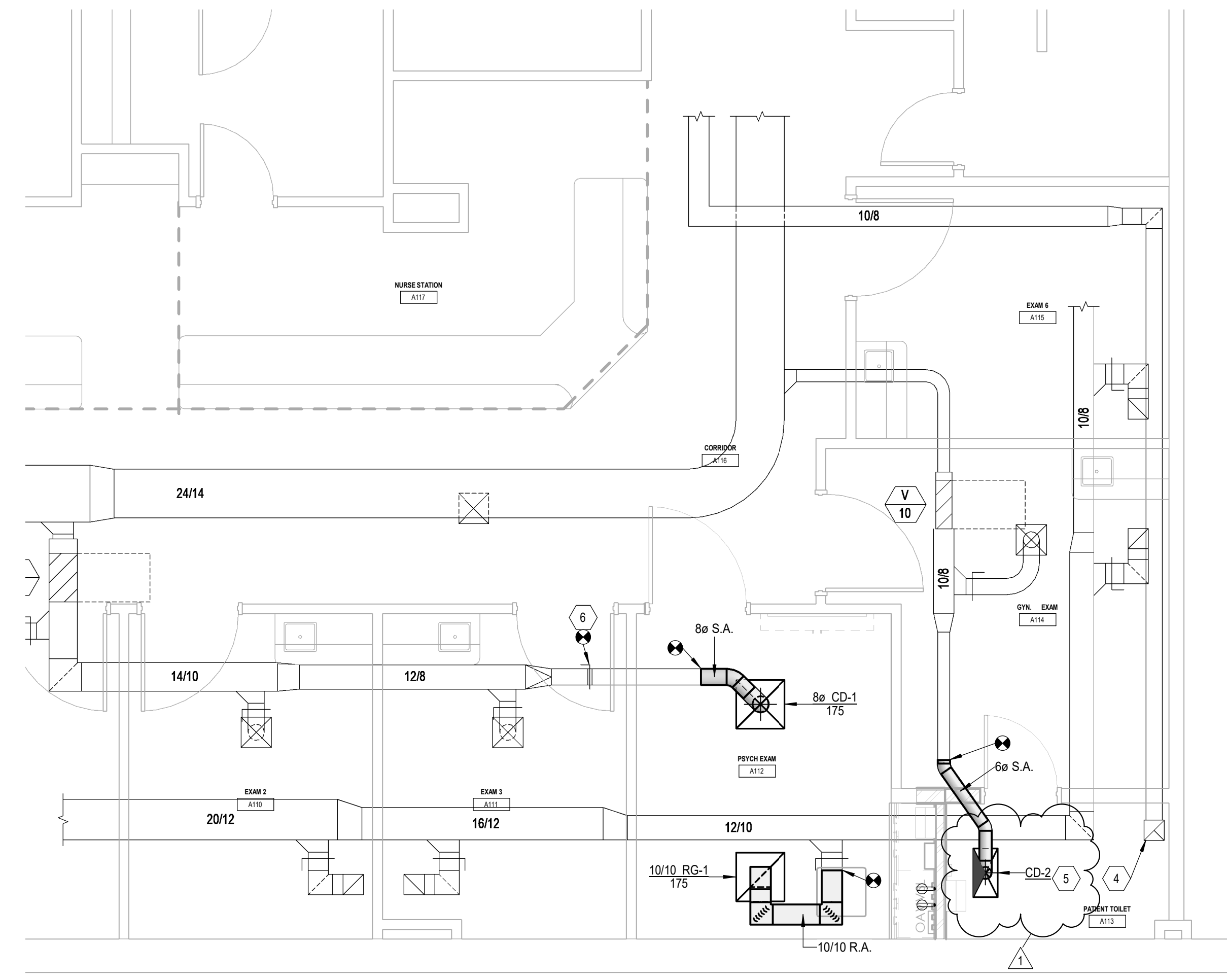


**KEYED NOTES**

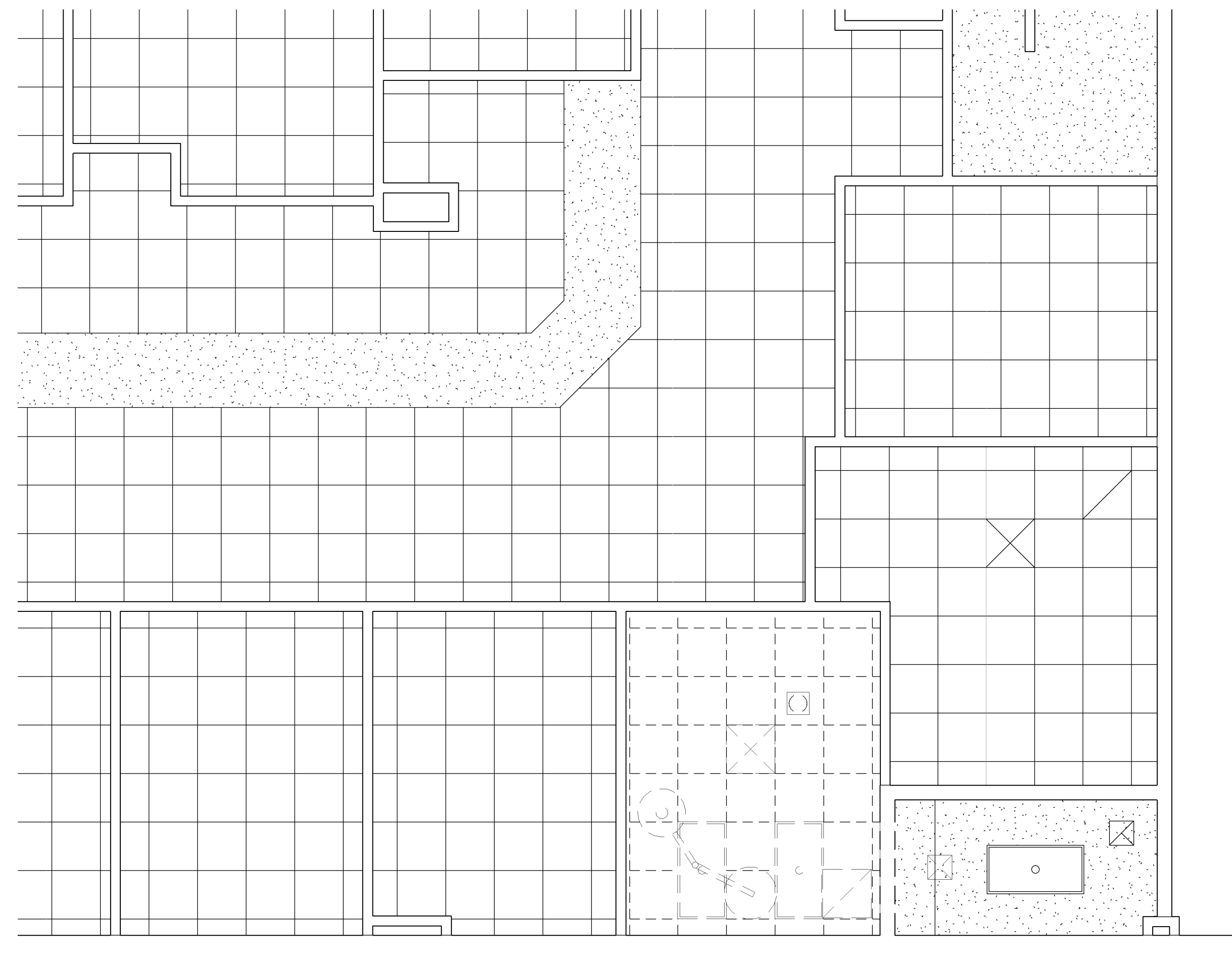
1. THIS EXISTING SUPPLY DIFFUSER IS TO BE REMOVED. MEASURE THE MAXIMUM AIRFLOW OF THE EXISTING DIFFUSER PRIOR TO REMOVAL. DEMOLISH THE ASSOCIATED SUPPLY AIR DUCTWORK BACK TO THE APPROXIMATE LOCATION SHOWN.
2. THIS EXISTING RETURN GRILLE IS TO BE REMOVED. MEASURE THE MAXIMUM AIRFLOW OF THE EXISTING RETURN GRILLE PRIOR TO REMOVAL. DEMOLISH THE ASSOCIATED RETURN AIR DUCTWORK BACK TO THE APPROXIMATE LOCATION SHOWN.
3. THIS EXISTING 24x24 SUPPLY DIFFUSER IS TO BE REMOVED. MEASURE THE MAXIMUM AIRFLOW OF THE EXISTING DIFFUSER PRIOR TO REMOVAL. DEMOLISH THE ASSOCIATED SUPPLY AIR DUCTWORK BACK TO THE APPROXIMATE LOCATION SHOWN.
4. THIS EXISTING EXHAUST AIR GRILLE IS TO REMAIN IN SERVICE. PROTECT FROM DAMAGE.
5. INSTALL THE NEW 12x24 SUPPLY AIR DIFFUSER IN THIS LOCATION. AFTER THE CONSTRUCTION HAS BEEN COMPLETED, REBALANCE THE MAXIMUM AIRFLOW THROUGH THIS NEW DIFFUSER TO THE PREVIOUSLY MEASURED VALUE.
6. INSTALL THE MANUAL BALANCING DAMPER FOR THE SUPPLY DIFFUSER SERVING PSYCH EXAM A112 IN THE DUCTWORK ABOVE THE CEILING IN EXAM 3. THE DIFFUSER AIRFLOW NEEDS TO BE ABLE TO BE BALANCED WITHOUT GOING THROUGH THE HARD LID CEILING IN PSYCH EXAM A112.



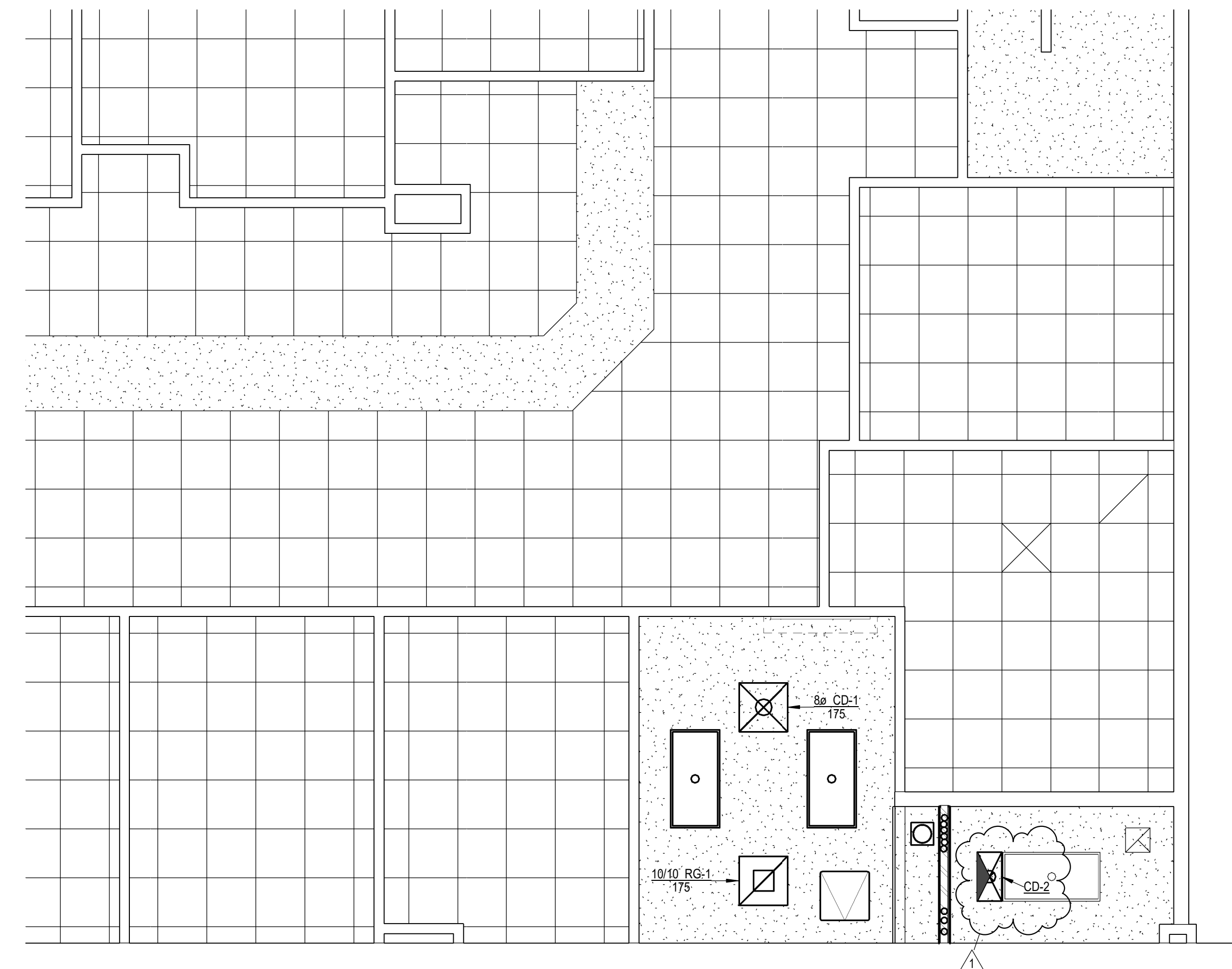
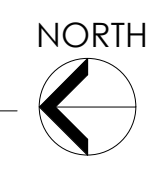
**1 PSYCH EXAM DEMOLITION PLAN**  
SCALE: 1/4" = 1'-0"  
NORTH



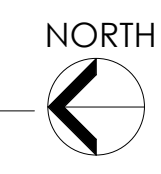
**2 PSYCH EXAM MECHANICAL PLAN**  
SCALE: 1/4" = 1'-0"  
NORTH



1 PSYCH EXAM REFLECTED CEILING DEMOLITION PLAN  
SCALE: 1/4" = 1'-0"



2 PSYCH EXAM REFLECTED CEILING PLAN  
SCALE: 1/4" = 1'-0"

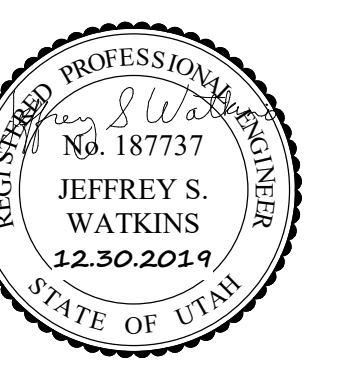


# KEYED NOTES

1. ..



NJRA Architects, Inc.  
5272 S. College Drive, Suite 104  
Murray, Utah 84123  
801.364.9259  
www.njraarchitects.com



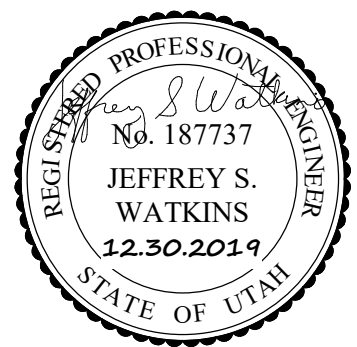
Ogden Regional Medical Center  
Psych Exam Remodel

5475 South 500 East  
Ogden, UT 84405

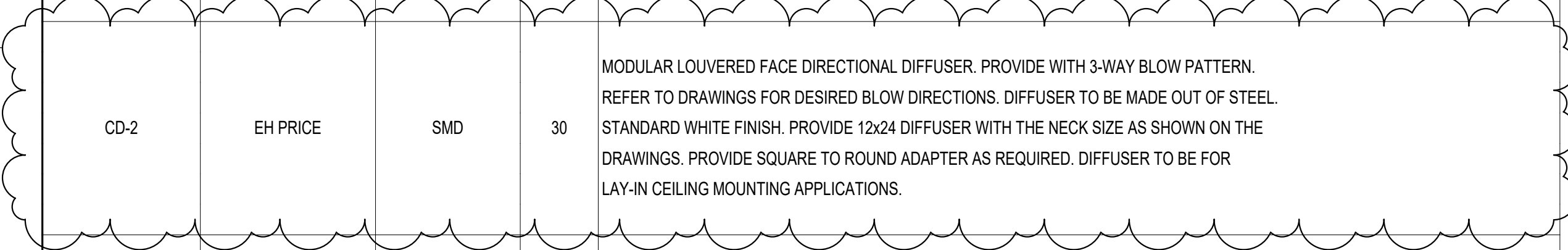
NJRA Project # 19301.00  
Construction Documents 12/30/19  
Addendum #1 03/09/2020

PSYCH EXAM  
REFLECTED  
CEILING  
PLANS

MH202

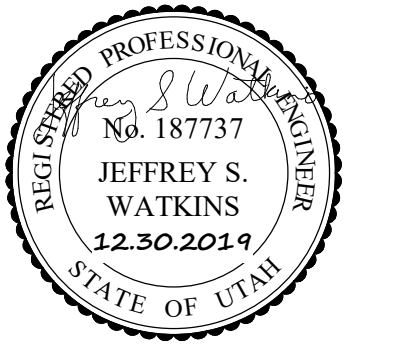


GRILLES, REGISTERS AND DIFFUSERS				
ID	MANUFACTURER	MODEL	MAX NC	DESCRIPTION
CD-1	EH PRICE	MSRRCD	30	MAXIMUM SECURITY RISK RESISTANT CEILING DIFFUSER. PROVIDE WITH 4-WAY BLOW PATTERN. COUNTERSUCK HOLES IN FACE WITH #12 X 2" LONG TAMPER-PROOF SCREWS. 12 GAUGE HOT ROLLED STEEL CONSTRUCTION. STANDARD WHITE FINISH. PROVIDE 18"18 GRILLE SIZE. NECK SIZE AS SHOWN ON DRAWINGS. PROVIDE SQUARE TO ROUND ADAPTER.
CD-2	EH PRICE	SMD	30	MODULAR LOUVERED FACE DIRECTIONAL DIFFUSER. PROVIDE WITH 3-WAY BLOW PATTERN. REFER TO DRAWINGS FOR DESIRED BLOW DIRECTIONS. DIFFUSER TO BE MADE OUT OF STEEL. STANDARD WHITE FINISH. PROVIDE 12x24 DIFFUSER WITH THE NECK SIZE AS SHOWN ON THE DRAWINGS. PROVIDE SQUARE TO ROUND ADAPTER AS REQUIRED. DIFFUSER TO BE FOR LAY-IN CEILING MOUNTING APPLICATIONS.
RG-1	EH PRICE	MSRRP	30	MAXIMUM SECURITY RISK RESISTANT PERFORATED GRILLE. FACE PLATE SHALL BE 3/16" HOT ROLLED STEEL WITH 3/16" DIAMETER HOLES STAGGERED 60 DEGREES ON 9/32" CENTERS. CONTINUOUSLY WELDED SEAMS. FASTEN TO CEILING USING #12 X 1-1/2" LONG TAMPER-PROOF SCREWS. WITH OPTION CS 12 SPNR (PLATED STEEL), STANDARD WHITE FINISH. PROVIDE 24x24 OR 12x24 GRILLES AS SHOWN ON DRAWINGS. NECK SIZE AS SHOWN ON DRAWINGS. PROVIDE SQUARE TO ROUND ADAPTER.
EG-1	EH PRICE	MSRRP	30	MAXIMUM SECURITY RISK RESISTANT PERFORATED GRILLE. FACE PLATE SHALL BE 3/16" HOT ROLLED STEEL WITH 3/16" DIAMETER HOLES STAGGERED 60 DEGREES ON 9/32" CENTERS. CONTINUOUSLY WELDED SEAMS. FASTEN TO CEILING USING #12 X 1-1/2" LONG TAMPER-PROOF SCREWS. WITH OPTION CS 12 SPNR (PLATED STEEL), STANDARD WHITE FINISH. PROVIDE 24x24 OR 12x24 GRILLES AS SHOWN ON DRAWINGS. NECK SIZE AS SHOWN ON DRAWINGS. PROVIDE SQUARE TO ROUND ADAPTER.



PLUMBING FIXTURE SCHEDULE							
ID	FIXTURE	DCW (IN)	DHW (IN)	W (IN)	V (IN)	DESCRIPTION	NOTES
S-1	PSYCH EXAM ROOM SINK	1/2	1/2	2	1-1/2	INTEGRAL SINK, ANTI-LIGATURE FAUCET	SINK: SOLID SURFACE INTEGRAL SINK PROVIDED BY OTHERS. BSP #SF390 ANTI-LIGATURE SENSOR FAUCET WITH 1.5 GPM FLOW CONTROL. WATTS LFUSG-BM2 THERMOSTATIC MIXING VALVE WITH SLOAN EFT-470-A CHECK VALVES ON HOT AND COLD LINES. FLEXIBLE STAINLESS STEEL SUPPLIES WITH LOOSE KEY ANGLE STOPS. CHICAGO 327-XCP OPEN-GRID STRAINER AND CAST BRASS P-TRAP WITH CLEAN OUT PLUG. COVER ALL EXPOSED PIPING BENEATH THE SINK WITH A LAV SHIELD. PROTECTIVE LAVATORY ENCLOSURE BY TRUE-BRO OR EQUIVALENT. INSTALLED WITH TAMPER PROOF SCREWS. COLOR TO BE WHITE.

1. ALL UNDER GROUND WASTE AND VENT SHALL BE 2" OR GREATER.

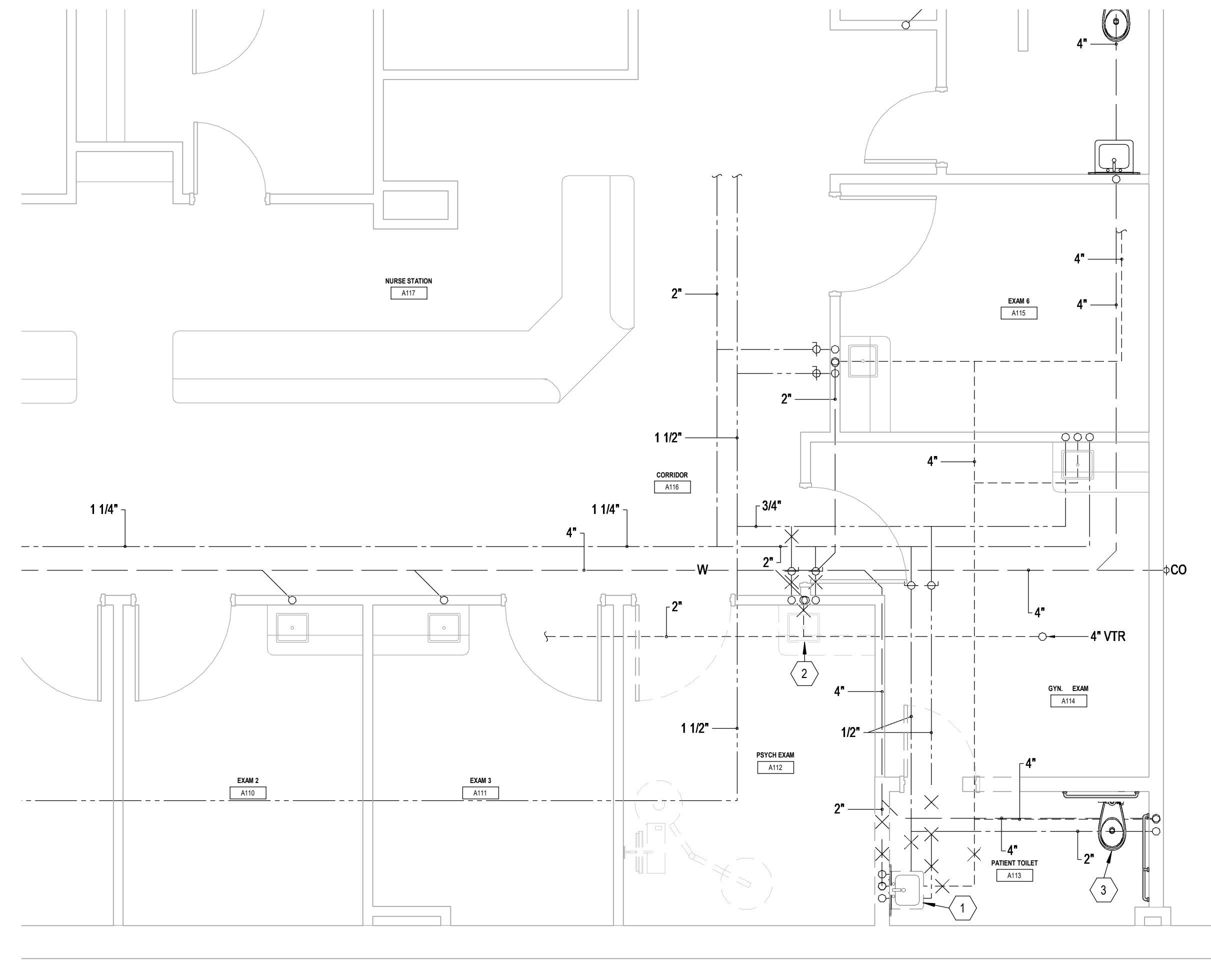


**KEYED NOTES**

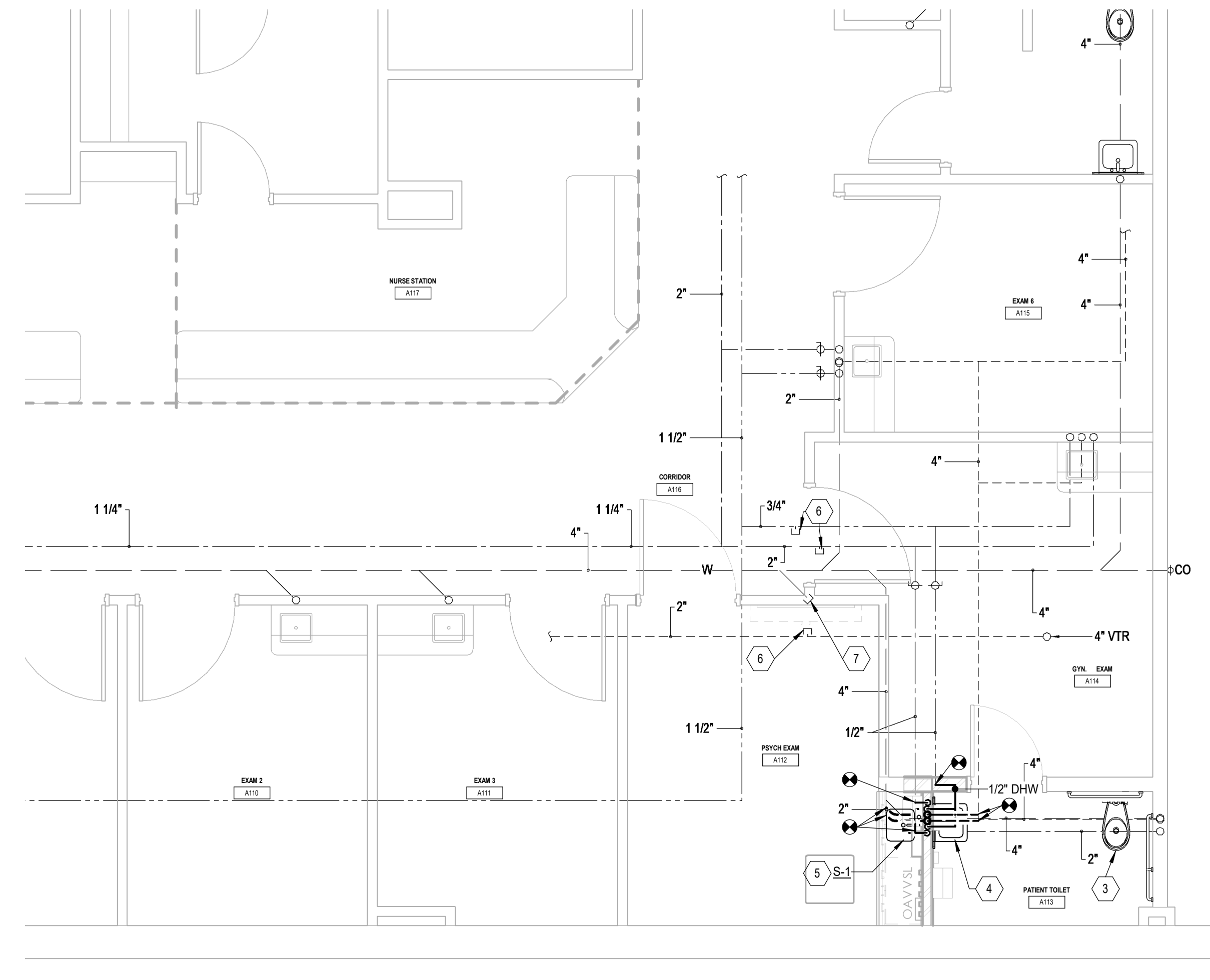
1. THIS EXISTING LAVATORY IS TO BE REMOVED AND REINSTALLED IN A NEW LOCATION IN PATIENT TOILET A113. PROTECT FROM DAMAGE. DEMOLISH THE ASSOCIATED SUPPLY, DRAIN, & VENT PIPING BACK TO THE APPROXIMATE LOCATIONS SHOWN. CORE DRILL THE FLOOR AS REQUIRED TO EXTEND THE DRAIN PIPING OVER TO THE SINK'S NEW LOCATION IN PATIENT TOILET A113. FIELD VERIFY THE EXTENT OF WORK.
2. THIS EXISTING SINK IS TO BE REMOVED AND SALVAGED FOR THE OWNER. PROTECT FROM DAMAGE. THIS SINK WILL NOT BE REINSTALLED IN PSYCH ROOM A112. DEMOLISH THE ASSOCIATED SUPPLY, DRAIN, & VENT PIPING BACK TO THE APPROXIMATE LOCATIONS SHOWN.
3. THIS EXISTING WATER CLOSET IS TO REMAIN IN SERVICE. PROTECT FROM DAMAGE.
4. REINSTALL THE SALVAGED LAVATORY IN THIS LOCATION. CONNECT THE SUPPLY, DRAIN, AND VENT PIPING BACK INTO THEIR RESPECTIVE EXISTING MAINS. CORE DRILL THE FLOOR AS REQUIRED TO EXTEND THE DRAIN PIPING OVER TO THE SINK'S NEW LOCATION. THE WASTE PIPING WORK WILL NEED TO OCCUR IN THE CEILING OF THE FLOOR BELOW. CAREFULLY COORDINATE WHEN TO REMOVE THE CEILING OF THE FLOOR BELOW TO COMPLETE THIS WORK. PATCH AND REPAIR THE FLOOR TO MATCH THE SURROUNDING FLOOR. FIELD VERIFY THE EXTENT OF WORK.
5. NEW SINK TO BE INSTALLED WITH AN ANTI-SPLASH FAUCET. SEE PLUMBING FIXTURE SCHEDULE FOR DETAILS.
6. CAP THE EXISTING SUPPLY & VENT PIPING ABOVE THE CEILING IN THIS APPROXIMATE LOCATION.
7. CAP THE EXISTING DRAIN PIPING BELOW THE FLOOR IN THIS LOCATION. PATCH AND REPAIR THE FLOOR AND WALL TO MATCH THE SURROUNDING FLOOR AND WALL. THIS WORK WILL NEED TO OCCUR IN THE CEILING OF THE FLOOR BELOW. CAREFULLY COORDINATE WHEN TO REMOVE THE CEILING OF THE FLOOR BELOW TO COMPLETE THIS WORK. FIELD VERIFY THE EXTENT OF WORK.

**FIRE PROTECTION NOTES**

1. REMOVE AND REPLACE SPRINKLER HEADS IN PSYCH EXAM A112 & PATIENT TOILET A133. RELOCATE FIRE SPRINKLER HEADS AS REQUIRED PER NFPA 13 2016. FIELD VERIFY THE EXTENT OF WORK.
2. THE NEW FIRE SPRINKLER HEADS IN PATIENT TOILET A113 ARE TO MATCH EXISTING SPRINKLERS.
3. PROVIDE NEW INSTITUTIONAL STYLE SPRINKLER HEADS IN HARD LID CEILING FOR PSYCH EXAM A112.
4. CONTRACTOR SHALL PROVIDE HYDRAULIC ANALYSIS OF THE SYSTEM. IF THE ORIGINAL DESIGN INTENT IS ALTERED. FOR EXAMPLE, FLEXIBLE DROPS ARE ADDED WHERE HARD PIPE DROPS WERE ORIGINALLY INSTALLED.



**1 PSYCH EXAM PLUMBING DEMOLITION PLAN**  
SCALE: 1/4" = 1'-0"



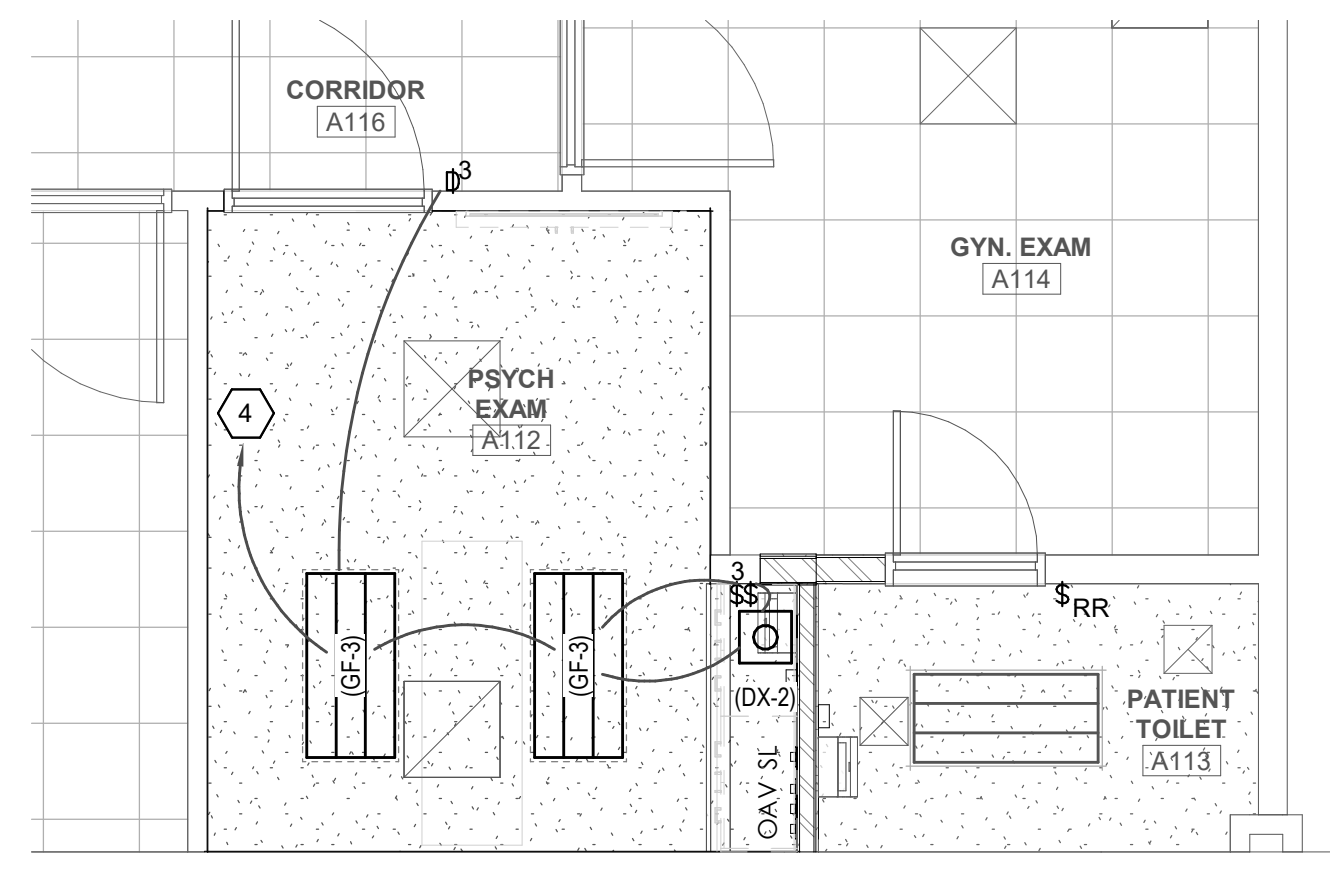
**2 PSYCH EXAM PLUMBING PLAN**  
SCALE: 1/4" = 1'-0"



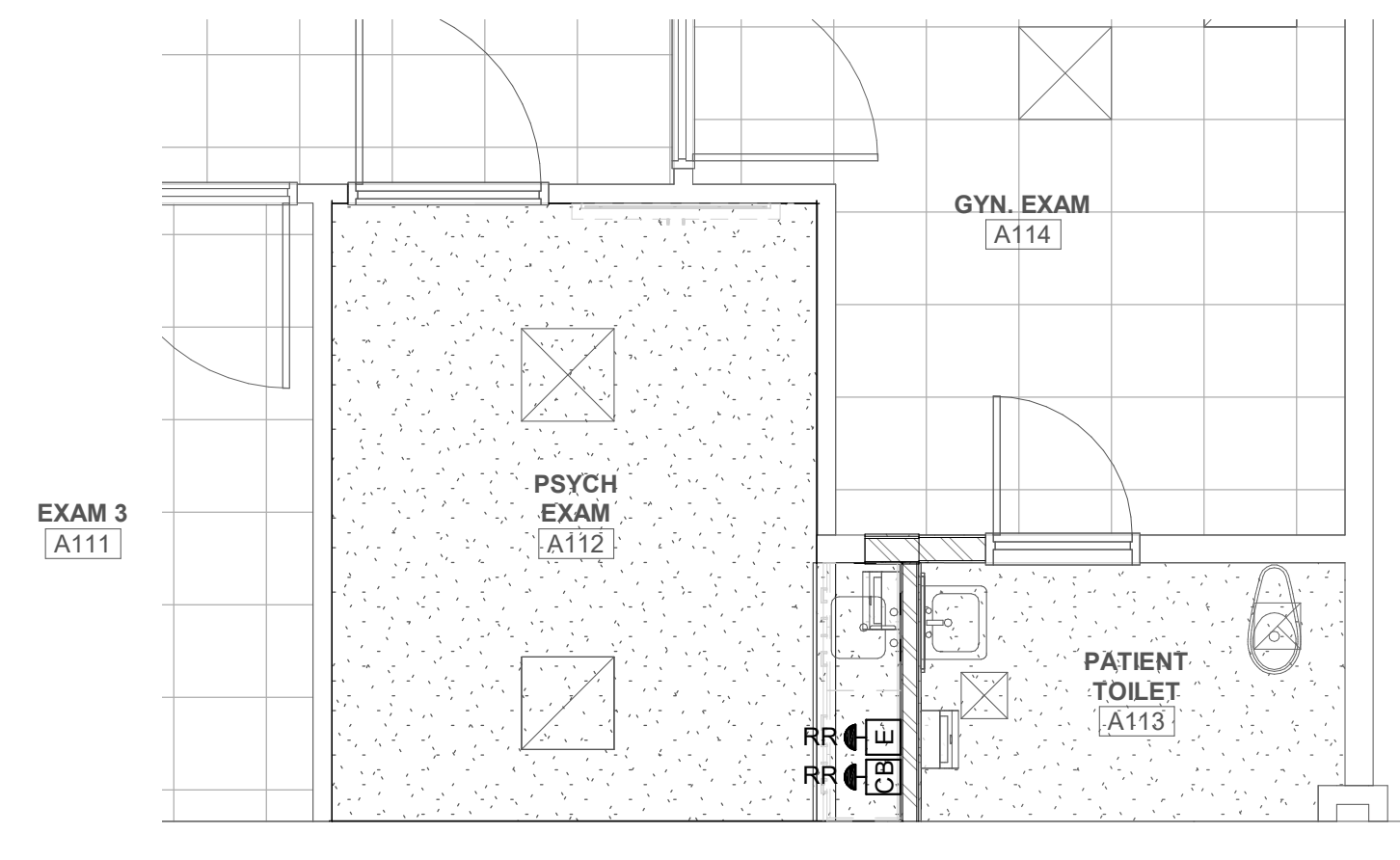
**GENERAL SHEET NOTES**

**SHEET KEYNOTES**

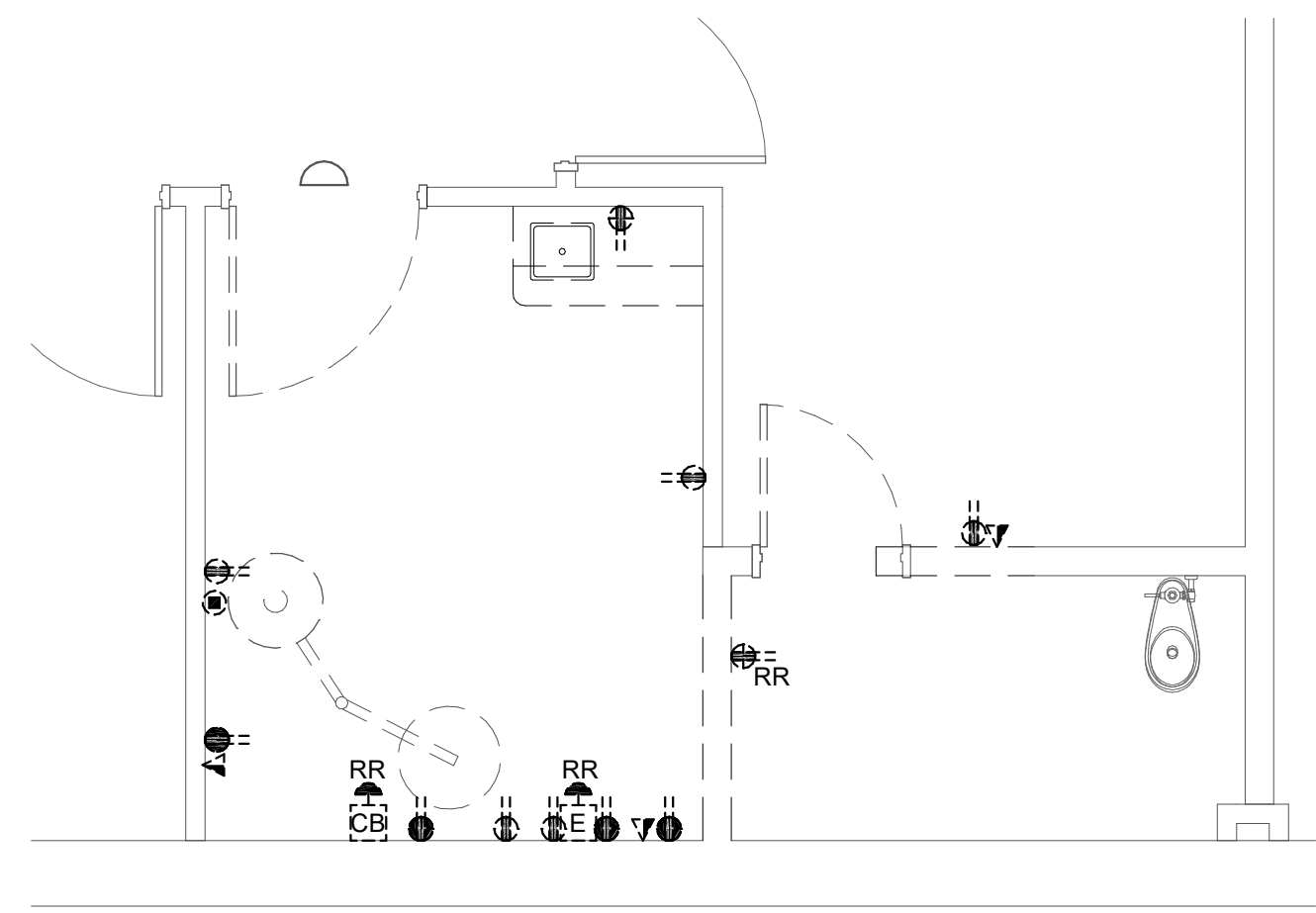
- 1 PROVIDE 120V CIRCUIT FOR ROLL-UP DOOR.
- 2 PROVIDE SINGLE GANG BACKBOX AND .75" CONDUIT RAN TO THE ROLL-UP DOOR FOR THE KEYED SWITCH CONTROL.
- 3 CONNECT TO EXISTING 120V EMERGENCY RECEPTACLE CIRCUIT IN THE ROOM.
- 4 CONNECT TO EXISTING LIGHTING CIRCUIT THAT PREVIOUSLY FED THE LIGHT FIXTURES IN THE ROOM.
- 5 DEMOLISH EXISTING EXAM LIGHT.



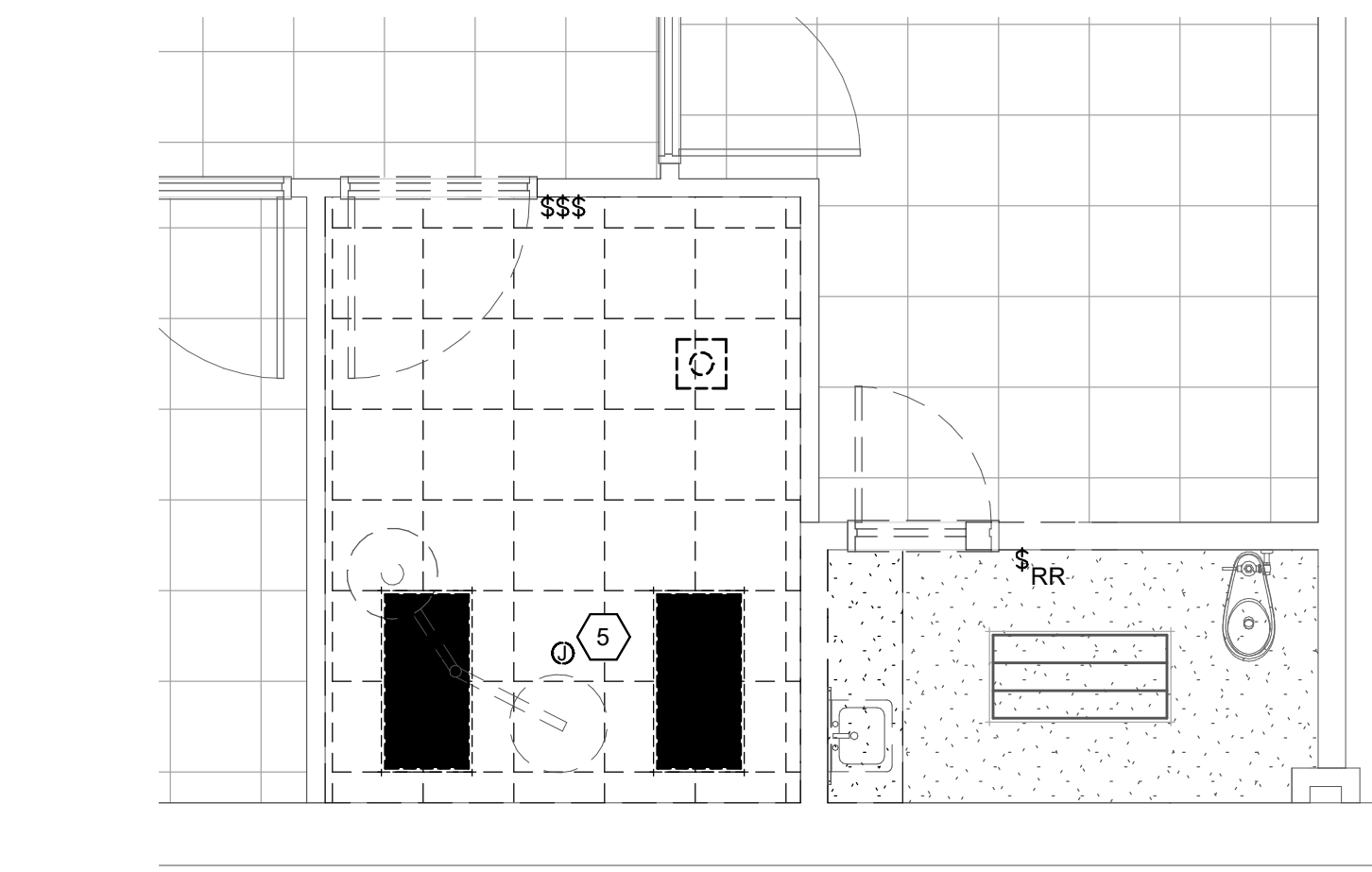
**4 LEVEL 1 LIGHTING PLAN**  
SCALE: 1/4" = 1'-0"



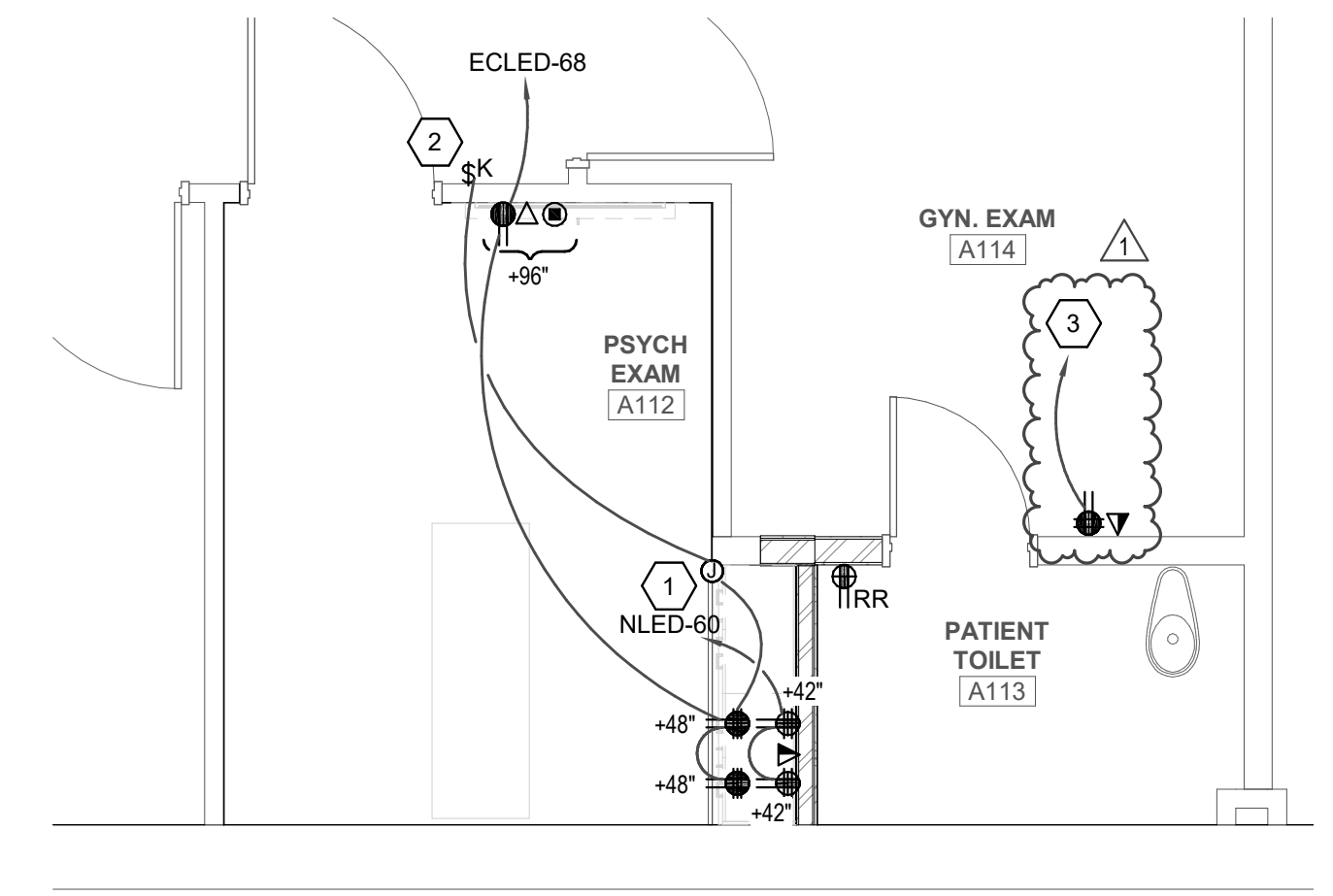
**5 LEVEL 1 AUXILIARY PLAN**  
SCALE: 1/4" = 1'-0"



**1 LEVEL 1 ELECTRICAL DEMOLITION PLAN**  
SCALE: 1/4" = 1'-0"



**2 LEVEL 1 CEILING DEMOLITION PLAN**  
SCALE: 1/4" = 1'-0"



**3 LEVEL 1 POWER PLAN**  
SCALE: 1/4" = 1'-0"

3/6/2020 3:16:38 PM