



ADDENDUM

Date:	March 10, 2020
Project:	Mountainstar- Ogden Regional Medical Center Psych Exam Remodel 5475 South 500 East Ogden, Utah 84405
Addendum Number:	2

The Contractors submitting proposals on the above-captioned project shall be governed by the following addendum, changes and explanations to the drawings and specifications and shall submit their bids in accordance therewith.

Item Number	General Items Description
1	Contractor to note that the project bid date as noted in the Notice to contractor is Thursday March 12th at 2:00 pm . Email or deliver bids to Bobby Braun with the Hospital Administration email: bobby.braun@mountainstarhealth.com . See notice to contractor for more information.
2	Contractor to note that the roll up coiling door in the Psych exam room is motorized and operated by the switch outside the room and therefore separate lock is not required at the door.
3	Contractor to note that the existing Nurse call system at the exam room is "Rauland" system that is being relocated. Contact to include in the bid.
4	Hospital preferred vendor for Voice Data and Communications Cabling is "Five 9's". Contact Vendor to include in the bid.
5	Hospital preferred vendor for Video Camera work is "Structure Works". Contact Vendor to include in the bid.
6	See attached Electrical Addendum #2 from Spectrum Engineers.

Sheet Number	Drawings
Electrical Drawings	
EP101	Sheet EP101- Level 1 Power Plan has been revised. See attached sheet with revisions clouded.
EL601	Sheet EL601- Lighting Fixture Schedule has been revised. See attached sheet with revisions clouded.

Attachments:

Documents: Electrical Addendum#2 letter from Spectrum Engineers.

Drawings: Revised Sheet EP101 & EL601.



SPECTRUM
ENGINEERS

Addendum #2

Project: ORMC ED Psych Exam Room Remodel **From:** Jason Worthen
Project No: 20191105 **Date:** March 06, 2020

DISCIPLINES

Mechanical Engineering
Electrical Engineering
Technology Design
Acoustical Engineering
Lighting Design
Theatre Design
Fire Protection Engineering
Building Commissioning

QUESTIONS

1. Are there any preferred installers for telecommunications cabling?
Owner preferred installer for telecom voice data is "Five 9's".
2. Does the auto door tie into the existing security system?
No the roll-up door does not tie into a security system.

DRAWINGS

EP101 (See attached sheet)

1. Added a camera in the exam room.

EL601 (See attached sheet)

2. Revised description of GF-3.
3. Added additional fixture options.

CENTERS OF ENGINEERING EXCELLENCE

Healthcare
Higher Education
K-12 Education
Government
Houses of Worship
Special Projects

SALT LAKE CITY

324 S. State Street
Suite 400
Salt Lake City, UT 84111
phone: 801-328-5151
fax: 801-328-5155

PHOENIX

1501 W. Fountainhead Parkway
Suite 340
Tempe, AZ 85282
phone: 480-621-3444
fax: 480-621-3445

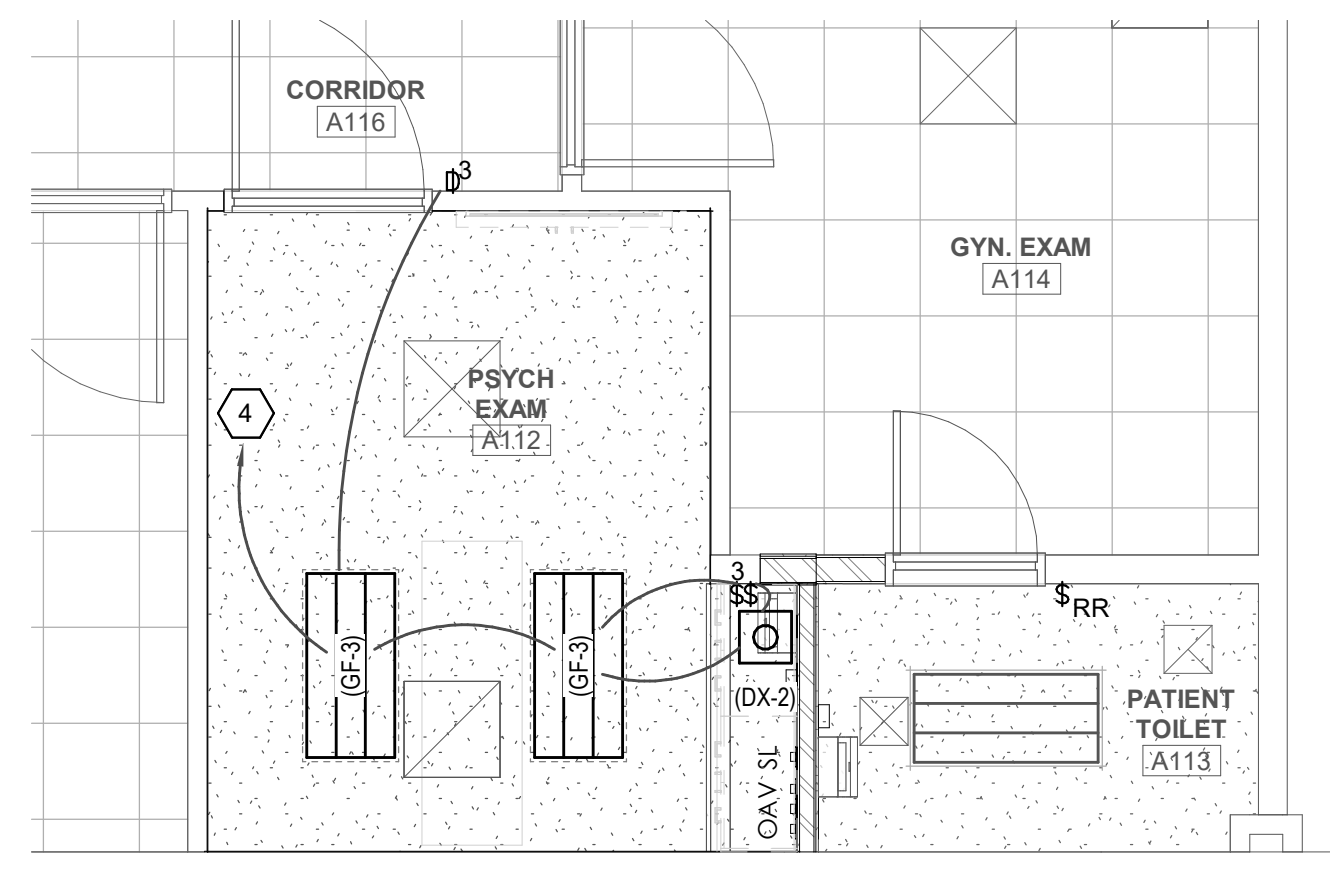
www.spectrum-engineers.com
800-678-7077



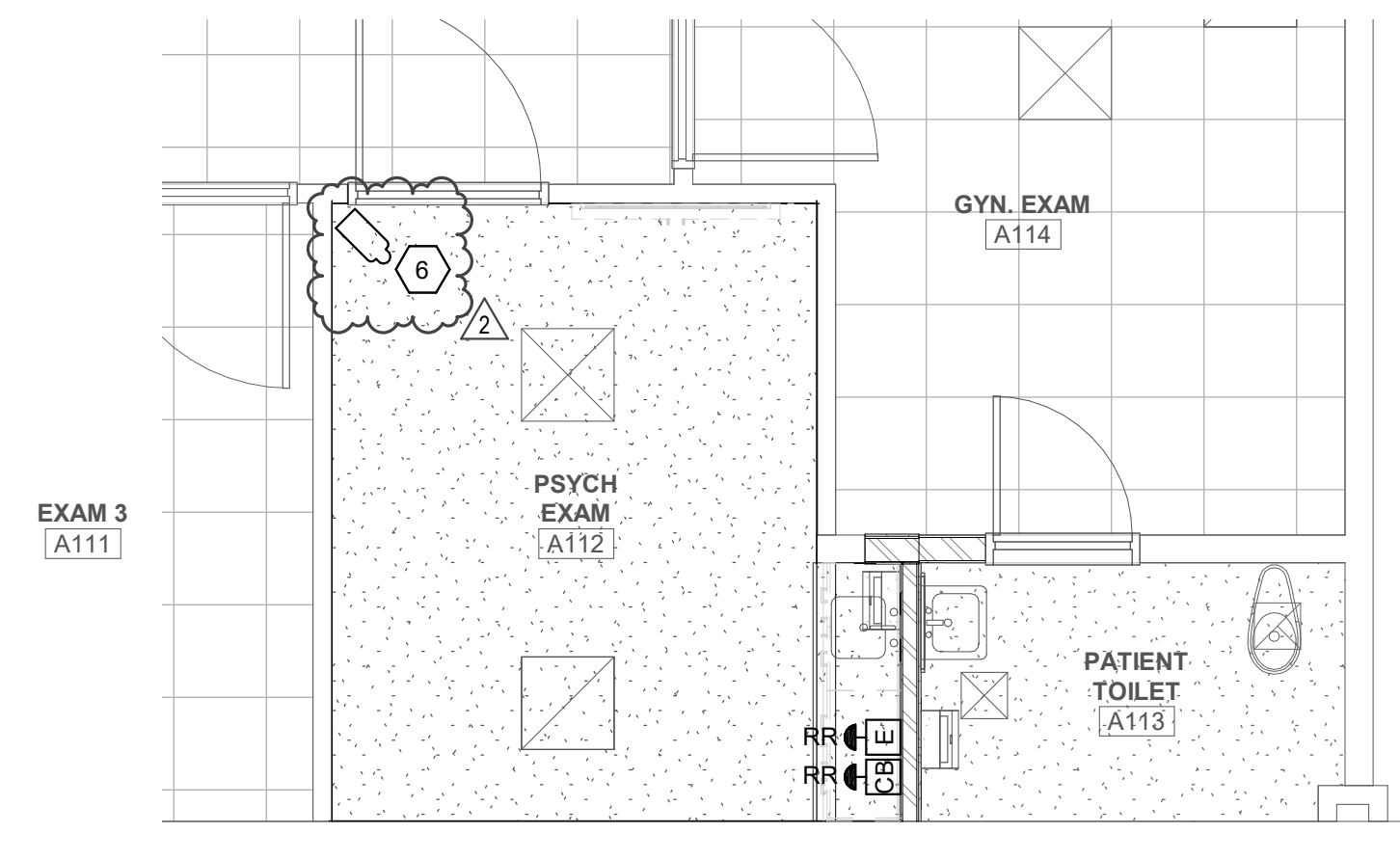
GENERAL SHEET NOTES

SHEET KEYNOTES

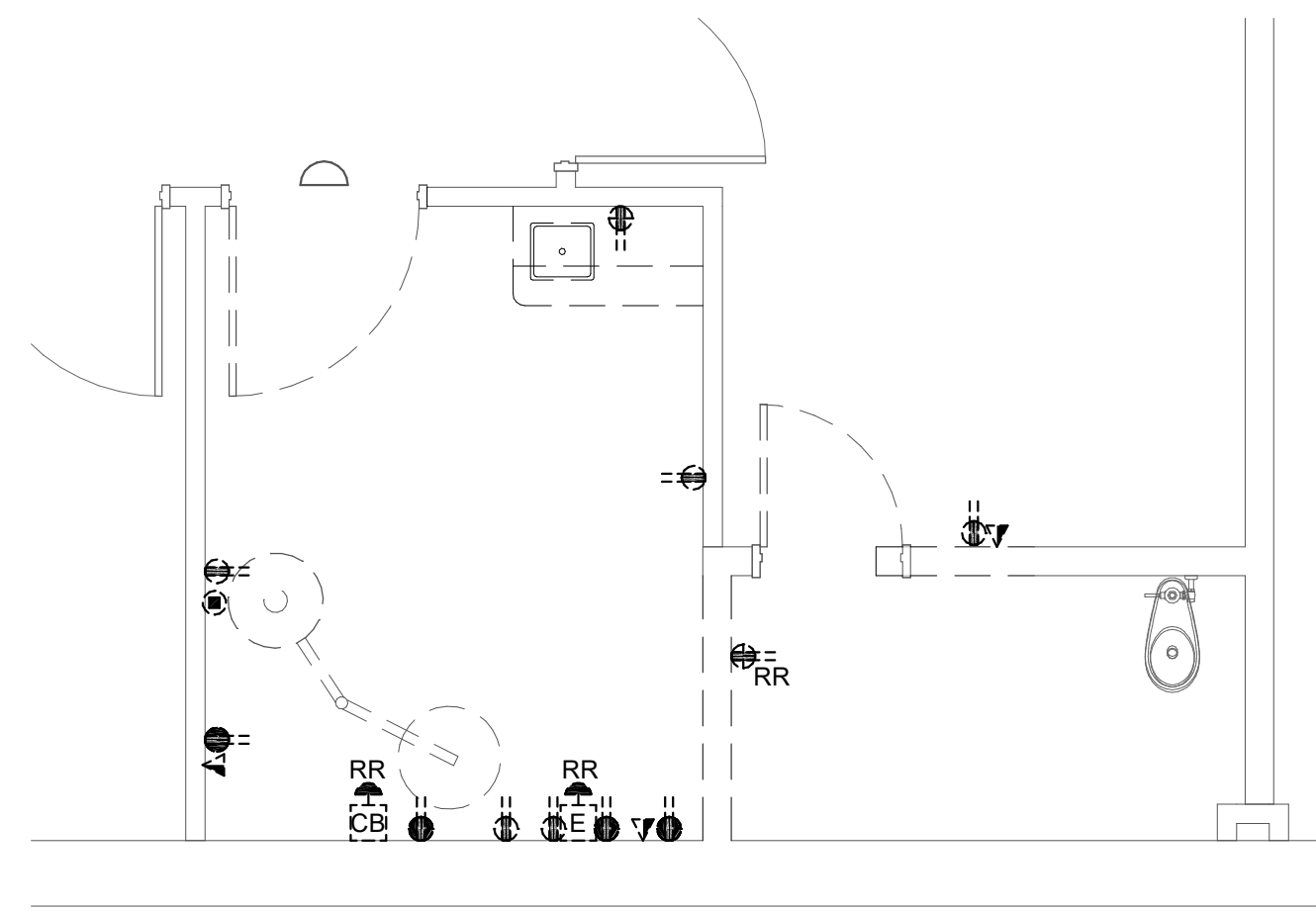
- 1 PROVIDE 120V CIRCUIT FOR ROLL-UP DOOR.
- 2 PROVIDE SINGLE GANG BACKBOX AND .75" CONDUIT RAN TO THE ROLL-UP DOOR FOR THE KEYED SWITCH CONTROL.
- 3 CONNECT TO EXISTING 120V EMERGENCY RECEPTACLE CIRCUIT IN THE ROOM.
- 4 CONNECT TO EXISTING LIGHTING CIRCUIT THAT PREVIOUSLY FED THE LIGHT FIXTURES IN THE ROOM.
- 5 DEMOLISH EXISTING EXAM LIGHT.
- 6 PROVIDE CISCO 6020 SECURITY CAMERA CONNECTED TO HOSPITAL VIDEO SURVEILLANCE SYSTEM. PROVIDE ANTI LIGATURE CAMERA ENCLOSURE.



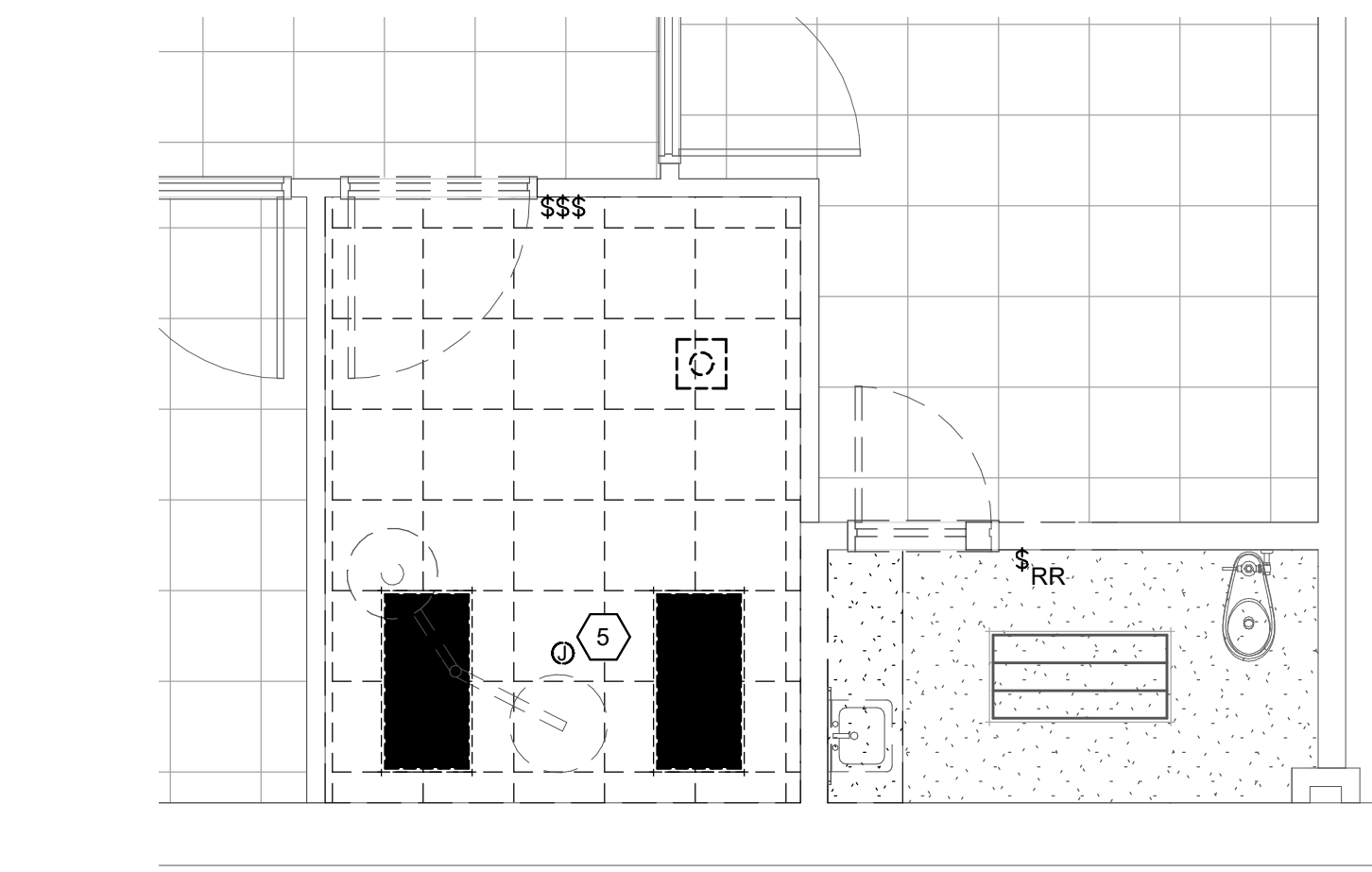
4 LEVEL 1 LIGHTING PLAN
SCALE: 1/4" = 1'-0"



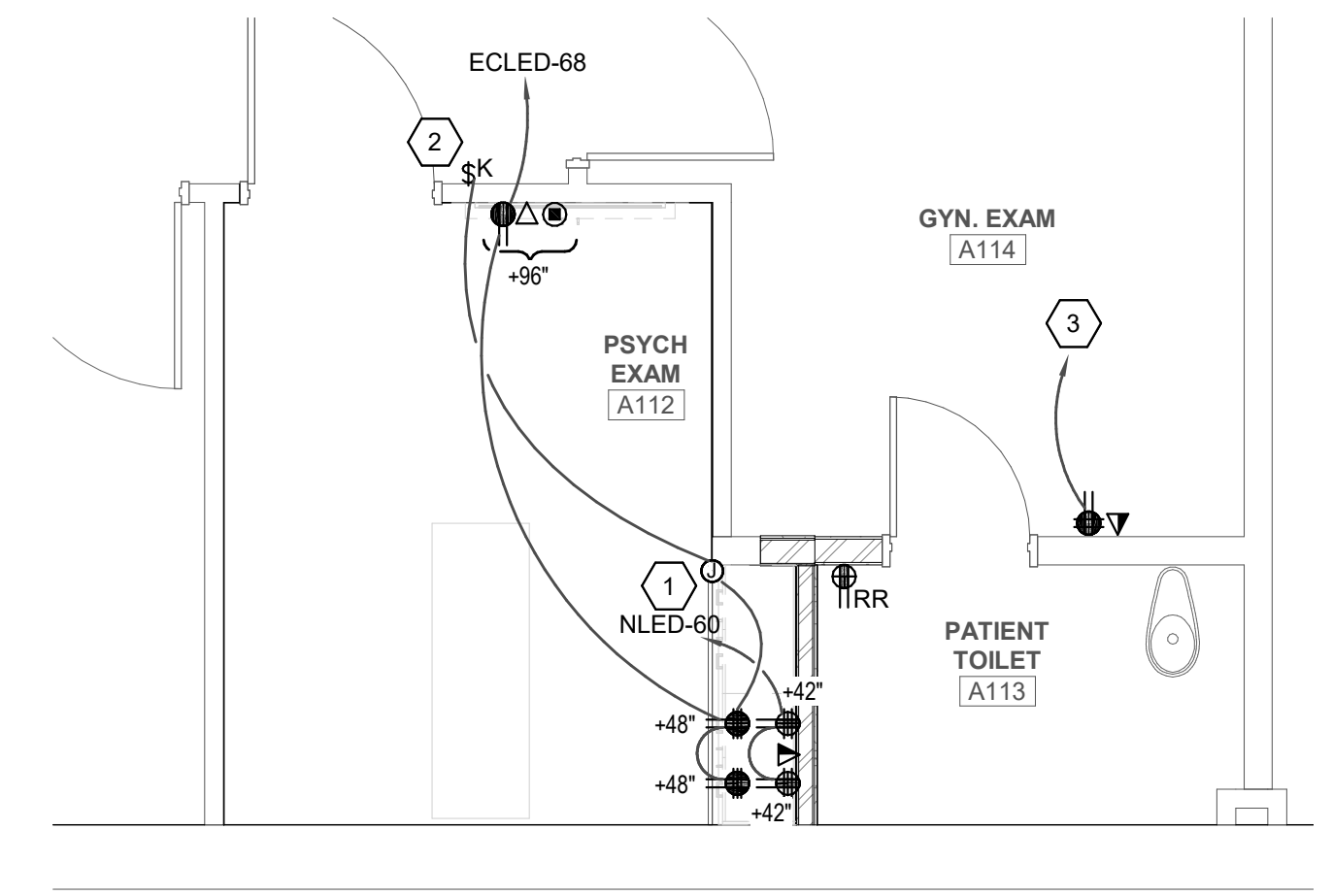
5 LEVEL 1 AUXILIARY PLAN
SCALE: 1/4" = 1'-0"



1 LEVEL 1 ELECTRICAL DEMOLITION PLAN
SCALE: 1/4" = 1'-0"



2 LEVEL 1 CEILING DEMOLITION PLAN
SCALE: 1/4" = 1'-0"



3 LEVEL 1 POWER PLAN
SCALE: 1/4" = 1'-0"

3/10/2020 3:05:52 PM



INTERIOR LIGHTING FIXTURE SCHEDULE

ABBREVIATIONS				GENERAL NOTES			
MOUNTING B - BASE C - CEILING F - FLANGE G - GRID P - PENDANT PL - POLE R - RECESSED S - SURFACE W - WALL 	LUMINAIRE OPTIONS ARHR - AIR RETURN AND HEAT REJECTION DL - DAMP LOCATION EQC - EARTHQUAKE CLIPS F - FUSING HLD - HINGED AND LATCHED DOOR HS - HOUSE SIDE SHIELD PS - PHOTOCCELL SWITCH QRS - QUARTZ RESTRIKE ST - STATIC WG - WIRE GUARD WL - WET LOCATION	FINISH MW - MATTE WHITE BL - BLACK SL - SILVER GL - GOLD CL - CLEAR PW - PAINTED WHITE EA - EXTRUDED ALUMINUM S - STEEL GS - GALVANIZED STEEL C - CAST CBA - COLOR BY ARCHITECT SCBA - STANDARD COLOR BY ARCHITECT CCA - CUSTOM COLOR BY ARCHITECT FS - MEETS FEDERAL STANDARD 208D TP - THERMALLY PROTECTED FL - FLUSH R - REGRESS M - MITERED	DIFFUSER/LENS BA - ACRYLIC #THICK #DA - ACRYLIC #THICK (OPAL) GC - GLASS (CLEAR) GL - GLASS (OPAL) GF - GLASS (FROSTED) SGL - SOFT GLOW LENS HPL - HIGH PERFORMANCE LENS DO - DROP OPAL CGL - CONVEX GLASS LENS S - SATIN LENS	REFLECTOR OP - NONE/OPEN SP - SPECULAR SS - SEMI-SPECULAR D - DIFFUSE (WHITE ENAMEL) SC - SPECULAR (COLORED) PR - PRISMATIC FDR - FULL DEPTH REFLECTOR DS - DIFFUSE (SEM SPECULAR) SILVER LI - LOW IRIDESCENT IR - IRIDESCENT SL - SILVER GL - GOLD CA - CLEAR ALZAK	<ol style="list-style-type: none"> PROVIDE UNIT PRICES AND FIXTURE BRAND SELECTED FOR ADD/DELETE CHANGES FOR EACH FIXTURE TYPES SHOWN WITHIN 48 BUSINESS HOURS OF THE BID DATE. FAILURE TO COMPLY WITH THIS REQUIREMENT MAY DISQUALIFY THE PRODUCTS AND EMPOWER THE ENGINEER TO DETERMINE FAIR VALUE FOR FIXTURE AND INSTALLATION CHANGES, WITHOUT FURTHER INPUT FROM THE CONTRACTOR OR INSTALLER. CONTRACTOR ALLOWANCE PRICES ARE ACCURATE WHEN THIS JOB WAS SPECIFIED. CONTRACTOR AND ELECTRICAL DISTRIBUTOR SHALL VERIFY THIS ALLOWANCE AND REPORT ANY PROBLEMS TO THE ENGINEER BEFORE THE BID. ALLOWANCE PRICE MAY OR MAY NOT INCLUDE LAMP(S) OR FREIGHT AS NOTED, AND DO NOT INCLUDE ANY TAXES. SUBSTITUTIONS AND/OR EQUAL FIXTURES MUST RECEIVE APPROVAL PRIOR TO BIDDING. THEY MUST BE SUBMITTED TO THE ENGINEER NO LESS THAN 2 WEEKS PRIOR TO BID OPENING. SAMPLES MUST BE PROVIDED FOR ANY AND ALL FIXTURES UPON A/E REQUEST PRIOR TO RELEASING FIXTURES. ALL FIXTURES SHALL BE LISTED AND APPROVED FOR THEIR INTENDED USE AND LOCATION. VERIFY THE PROPER MOUNTING KITS OR ACCESSORIES TO FACILITATE INSTALLATION AS SHOWN AT EACH LOCATION ON THE DRAWINGS. COMPLY WITH THE "INTERIOR LIGHTING" SECTION OF THE SPECIFICATIONS. REFER TO SPECIFICATIONS FOR IMPORTANT TECHNICAL REQUIREMENTS FOR LIGHTING FIXTURES, DRIVERS, AND LAMPS. ALL LIGHT FIXTURES TO BE EITHER "DLC" OR "LIGHTING FACTS" LISTED OR TO BE APPROVED BY ARCHITECT/ENGINEER AND OWNER. 		
NOTES				1			

ID	DESCRIPTION	NOMINAL SIZE				MOUNTING	TYPE	COLOR TEMP	CRI	DIMMER CONFIGURATION	VOLTAGE	WATTS	FINISH	FIXTURE LUMENS	DIFFUSER/LENS	REFLECTOR	OPTIONS	NOTES	MANUFACTURER (CATALOG SERIES)				
		LENGTH	DEPTH	HEIGHT	DIAMETER / APERTURE														OPTION 1	OPTION 2	OPTION 3	OPTION 4	
(DX-2)	6" ROUND, RECESSED LED DOWNLIGHT, SEMI-SPECULAR REFLECTOR, WHITE TRIM FINISH	-	-	-	0' - 6"	CR	LED	3500K		0-10V DIMMING (10%)	120/277	23	-	2000						GOTHAM (EVO-3520-6AR-WD-LSS-MVOLT-EZ10)	LITON (LHALD625C071-D10/LRA-1059WFS1-099-1257)	PORTFOLIO (LD6B20D010/EU6B10206-035/6LBW2H/HB26)	LIGHTTOLIER (RRL P6RDL20835CLZ10 U)
(GF-3)	2' X 4' LED TROFFER, FLANGE MOUNT, BEHAVIORAL HEALTH FIXTURE, VANDAL RESISTANT, ANTI-LIGATURE	4' - 0"	2' - 0"	-	-	CR	LED	3500K		0-10V DIMMING (10%)	120/277	72	-	6700		FLANGE KIT				KENALL (MMA0244-F-B-FA-67L3E-K-DCC-DV-AMF)	NEW STAR (AATB R 24 HC18 OC - 1 L3 35 1C UN DM)		