

Project: Heber Valley Hospital Fluoroscopy Replacement
Addendum 1

Date: August 8, 2024

To: Contractors/Subcontractors

From: HKS Architects, Inc
90 South 400 West, Suite 110
Salt Lake City, Utah 84101
(801) 532-2393

The Pricing Documents shall be amended and/or revised by Addendum hereinafter specified and all Work affected by this Addendum shall be included.

Except as may otherwise be described, labor and materials for the Work hereinafter shall conform to all requirements of the original Contract Documents.

Pages of Addendum: 11 each pages or sheets

General Items:

The Owner has indicated that it would be acceptable to use the toilet room that is adjacent to the room being remodeled as an ante room for the ICRA barrier / containment strategy.

Clarifications:

1. On sheet EP101 the GE panel on the wall is shown in the control area. GE drawing shows it out in the room
 - a. GE panel, item 1, shall be in the main room, as indicated on GE drawing 13/16, and will be provided by GE
2. Are we using an of the floor duct for the new set up?
 - a. GE indicates they can reuse all the floor duct, conduits and wall ducts, with new openings, to accommodate the equipment location
 - i. Contractor to provide new grommeted openings noted on the GE drawings
3. Are we going to paint the wall duct?
 - a. Yes, the wall duct should be painted
4. GE drawings show a power and data behind the digital systems cabinet. EP101 sheet doesn't.
 - a. Provide data and electrical behind item 14 on GE drawing 13/16 as indicated. Provide dedicated circuit to outlet.
5. Contractor shall plan off-hour shutdown to tie the new electrical into its new permanent breaker. Coordinate with Owner.
6. Contractor shall verify the size of the new conduit required for the new feeders indicated for the new service
7. Contractor shall provide new sink, faucet, and piping as indicated on the drawings

8. Suggested support for the new transformer is indicated on EP101, with suitable slotted channel framing materials between beams (fastened to beam bottom flange), with vertical rods and slotted channel framing under the transformer, braced for seismic movement as required.
 - a. Existing beams have a spray applied fireproofing material on them. Spray applied fireproofing material shall be patched where disturbed by new support anchorages, etc.

Architectural Clarifications:

Sheet A2.01 Floor Plan

Keyed note PW in lower corner of room has been changed to PWL, with added locations

Information on sink remodel work has been added to this plan

Additional notes have been added to this plan

Sheet A3.50 Demolition Plan

Additional notes have been added to this plan

End of Addendum

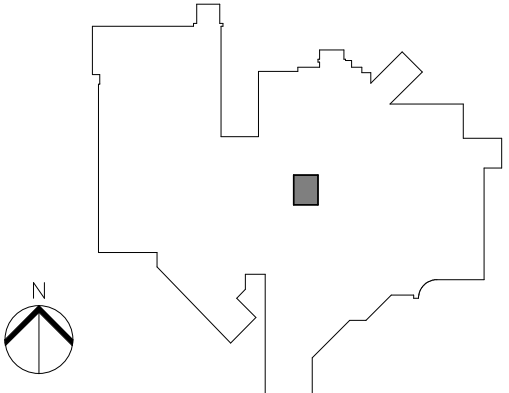
Attachments:

A2.01, A3.50

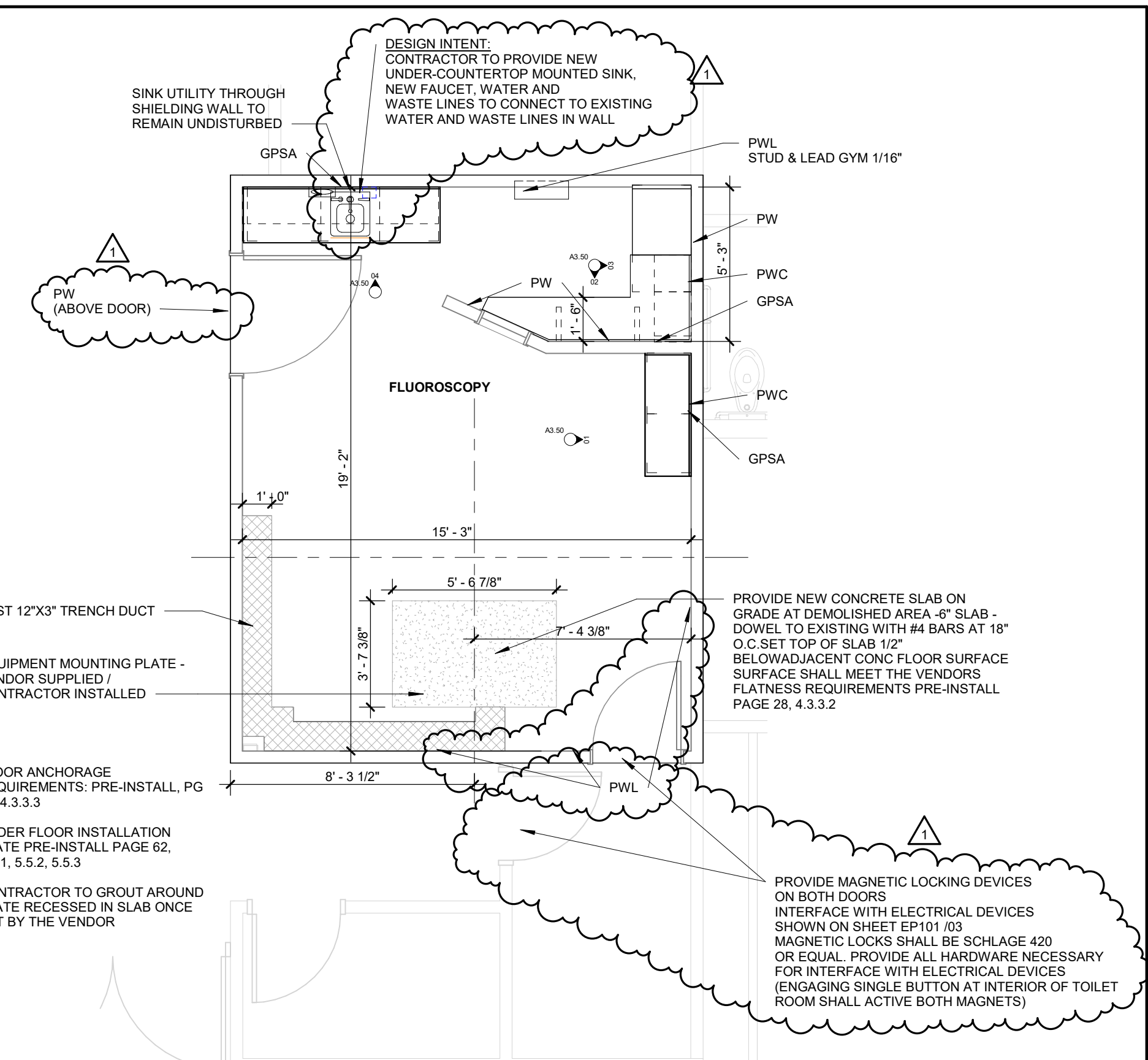
Under-countertop sink information

Faucet information

ED101, EP101



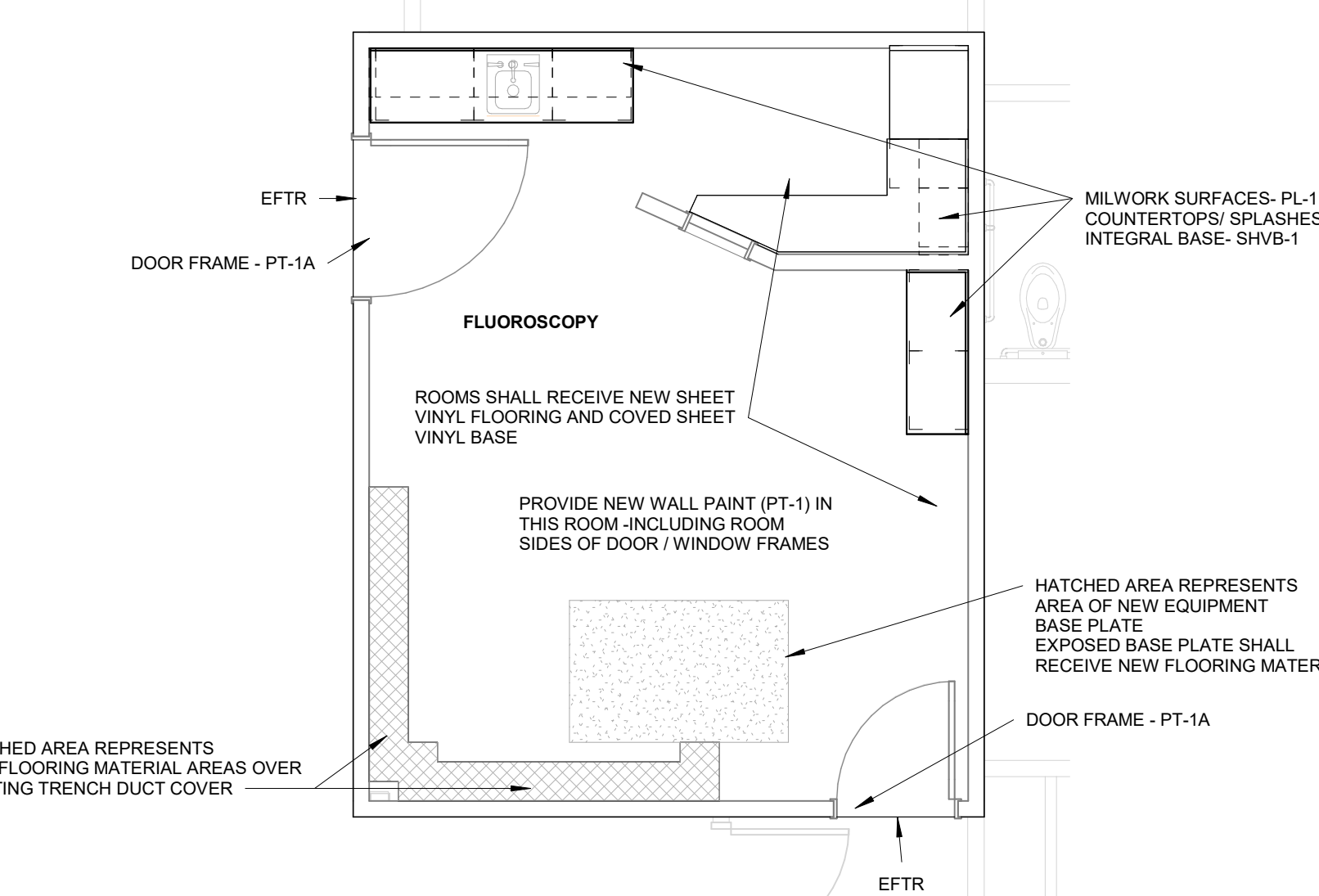
REVISION NO.	DESCRIPTION	DATE
1	ADDENDUM 1	8/8/2024



01 FLUOROSCOPY REMODEL PLAN
1/4" = 1'-0"

- FLOOR PLAN GENERAL NOTES / KEYED NOTES**
- DIMENSIONS INDICATED ARE TO FINISHED FACE OF GYPSUM BOARD
 - PATCH WALLS WHERE DISTURBED BY REMOVAL OF SHEET VINYL BASE, CABINET REMOVAL, UTILITY WORK, ETC.
 - INDICATES INTERIOR ELEVATIONS IN THIS ROOM. SEE SHEET A3.0N
- PW** - PATCH EXISTING GYP BD WALL AS NECESSARY AFTER INSTALLATION OF UTILITIES AND/OR WHERE EXISTING WALLS ARE REMOVED OR MODIFIED. NOT ALL LOCATIONS MAY BE INDICATED. COORDINATE WITH DEMOLITION AND UTILITY DRAWINGS. NOTE EXTENT OF PATCH MAY BE NOTED ON DRAWINGS
- PWL** - PATCH EXISTING LEAD WALL AS NECESSARY AFTER INSTALLATION OF UTILITIES AND/OR WHERE EXISTING WALLS ARE REMOVED OR MODIFIED. NOT ALL LOCATIONS MAY BE INDICATED. COORDINATE WITH DEMOLITION AND UTILITY DRAWINGS. NOTE EXTENT OF PATCH MAY BE NOTED ON DRAWINGS
- PWC** - PATCH EXISTING GYP BD WALL BEHIND CABINET AS NECESSARY
- EXSW** - EXISTING METAL STUD WALL SHALL BE PATCHED AND REPAIRED LEAD SHIELDING REPAIRED AFTER REMOVAL OF EQUIPMENT (SEE ON PICTURE A2.0108)
- WIEP** - WALL INFILL WHERE ELECTRICAL PANEL IS REMOVED AS NOTED IN A2.0107. PROVIDE WALL FRAMING AND 1/8" LEAD SHIELDED GYP BD AT INFILL LAP SHIELDING APPROPRIATELY

- FINISH PLAN NOTES / KEYED NOTES**
- CONTRACTOR SHALL REMOVE ACCESSORIES, ETC. BEFORE PAINTING, AND REPLACE ACCESSORIES, ETC. AFTER PAINTING
- EFTR** - EXTENT OF FINISHED VS NEW FLOORING AT EXISTING OPENINGS. TRANSITION OCCURS AT EXISTING FLOORING EXTENT



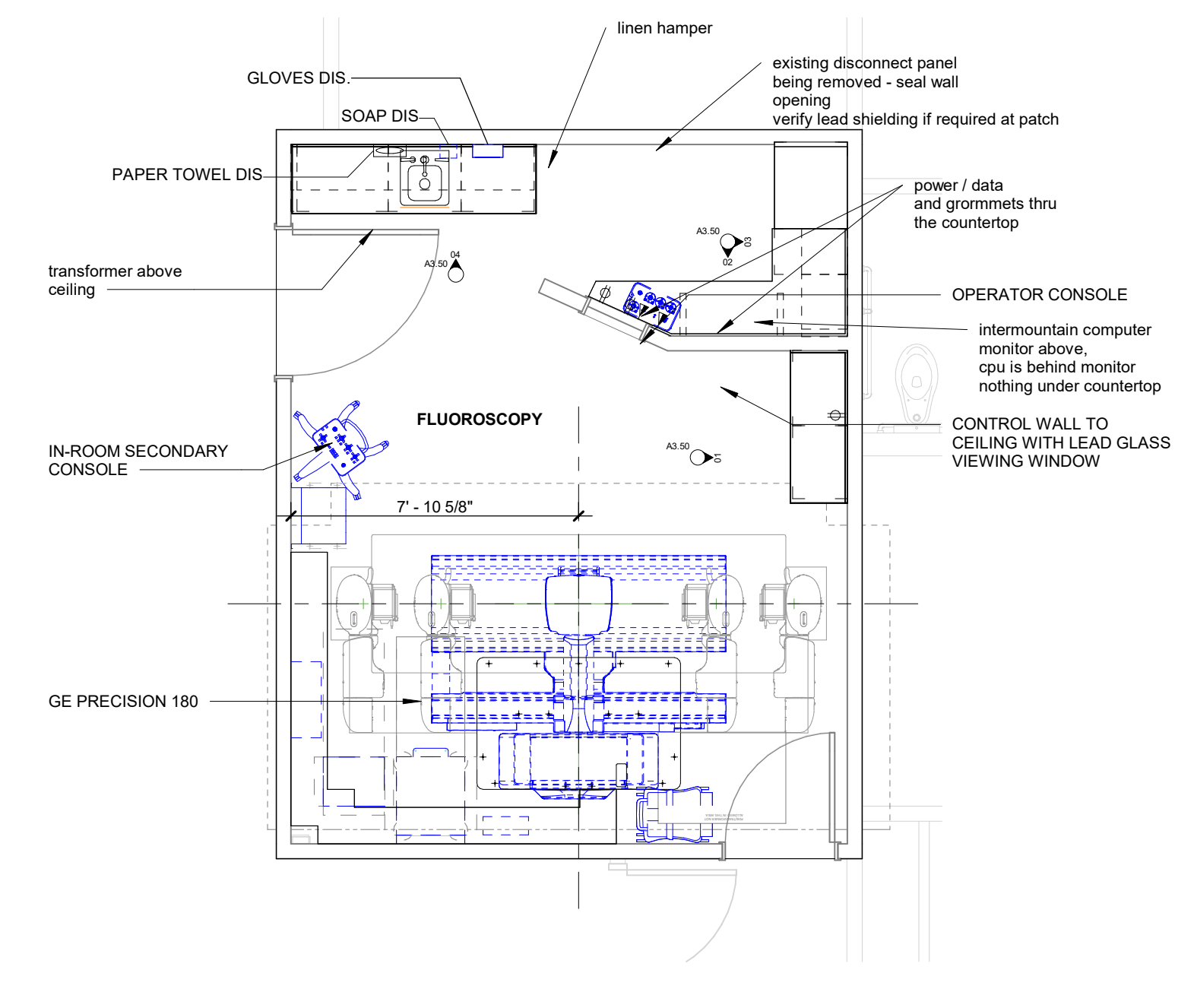
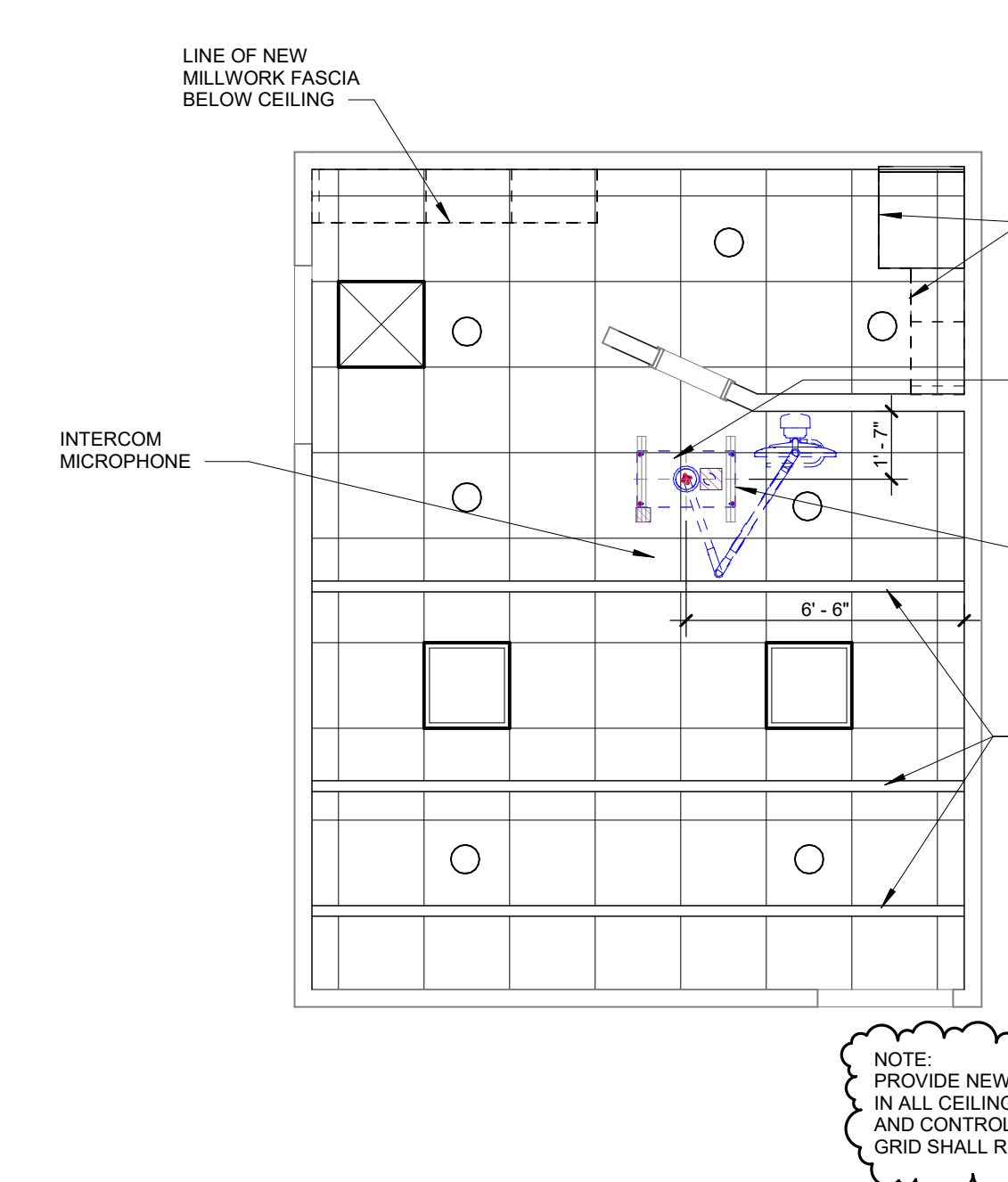
04 FLUOROSCOPY REMODEL FINISH PLAN
1/4" = 1'-0"

CEILING SYMBOL LEGEND

	GYPSUM BOARD CEILING		CHANDELIER
	GYPSUM BOARD CEILING		CONTROL JOINTS
	SUPPLY AIR		EXIT SIGN - HATCH INDICATES EXIT TEXT & ARROW INDICATES DIRECTION
	RETURN AIR		FIRE ALARM / STROBE
	EXHAUST AIR		SPEAKER
	ACCESS PANEL		SPRINKLER
	FLUORESCENT LIGHT		PROJECTOR
	SUSPENDED LIGHT		WALL WASHER
	SUSPENDED FLUORESCENT LIGHT		PENDANT TYPE LIGHT FIXTURE
	WALL MOUNTED FIXTURE		WALL MOUNTED LIGHT FIXTURE
			DOWNLIGHT
			STRIP LIGHT

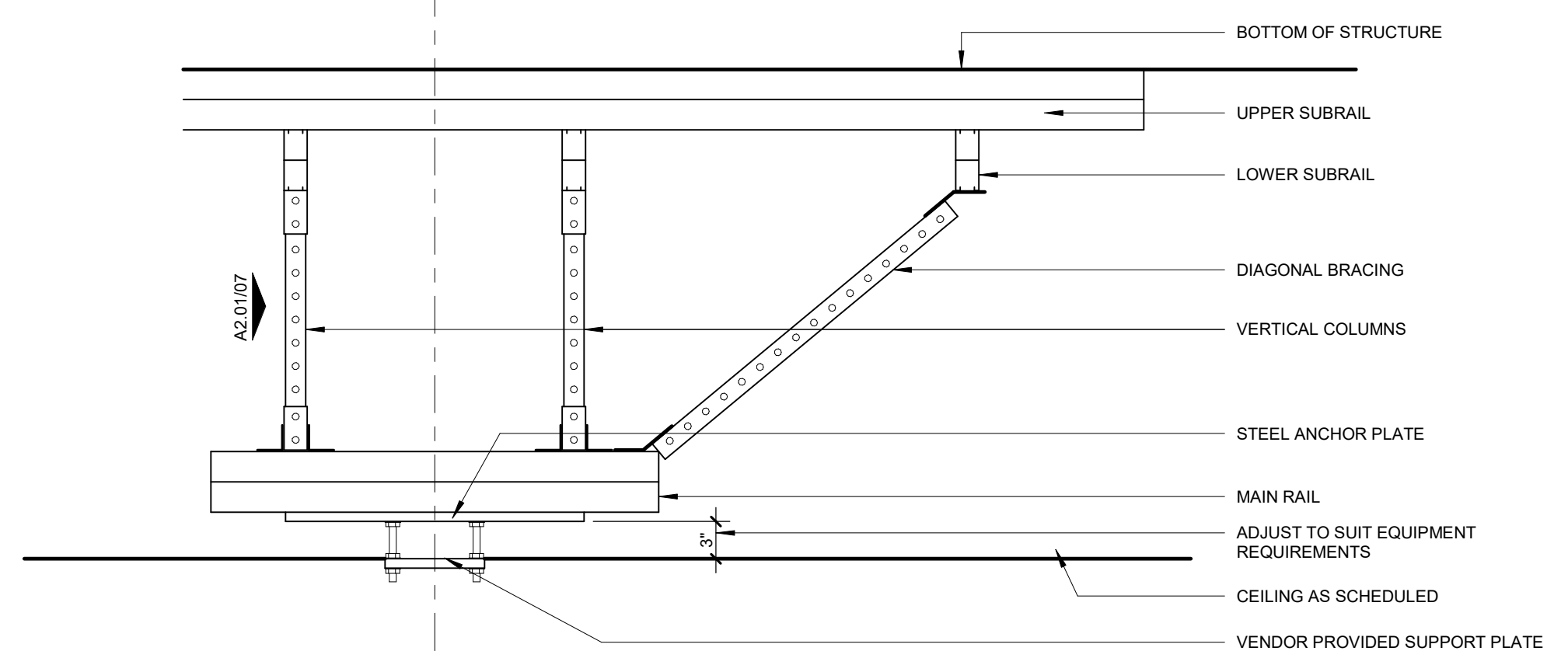
- REFLECTED CEILING NOTES / KEYED NOTES**
- CEILING HEIGHTS ARE AS INDICATED BY #.#.#
 - LIGHTS, DIFFUSERS, EXIT SIGNS, SMOKE DETECTORS, SPEAKERS, STROBES AND MISCELLANEOUS DEVICES SHALL BE CENTERED IN THE CEILING TILE IN WHICH THEY OCCUR, UNLESS NOTED OTHERWISE.
- EXIST** - INDICATES EXISTING CEILING / MATERIALS TO REMAIN
- CJ** - CONTROL JOINT LOCATIONS IN GYPSUM BOARD ASSEMBLIES IN WALLS THAT INTERSECTS BULKHEADS
- WF** - DESIGNATES LOCATIONS WHERE THE WALL OR TALL CABINETS MILLWORK FASCIA EXTENDS TO CEILING (NOTED FOR REFERENCE / COORDINATION)
- LLU** - LIGHTS LINE UP
- VLIS** - CENTER LIGHT IN CEILING SPACE
- CSF** - CEILING START POINT

03 FLUOROSCOPY REMODEL RCP
1/4" = 1'-0"

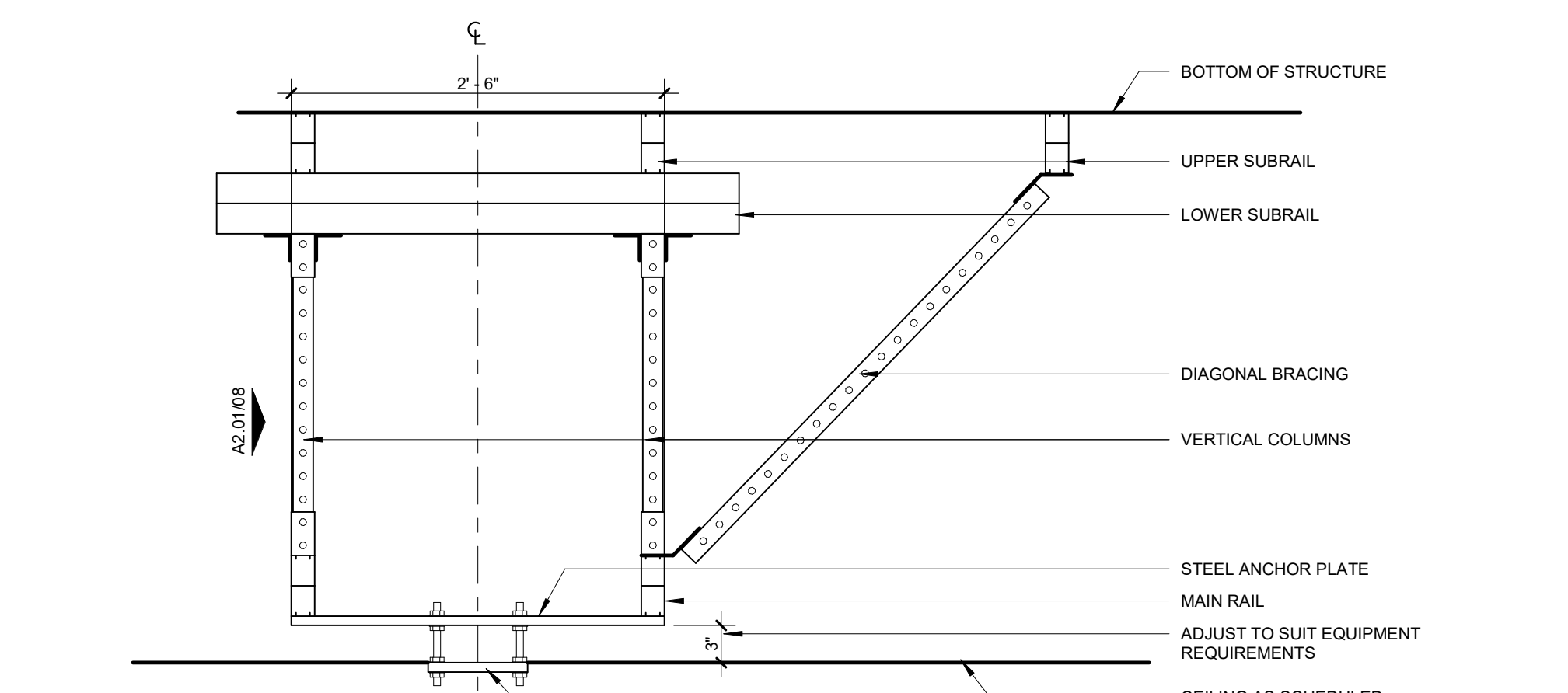


05 FLUOROSCOPY REMODEL EQUIP PLAN
1/4" = 1'-0"

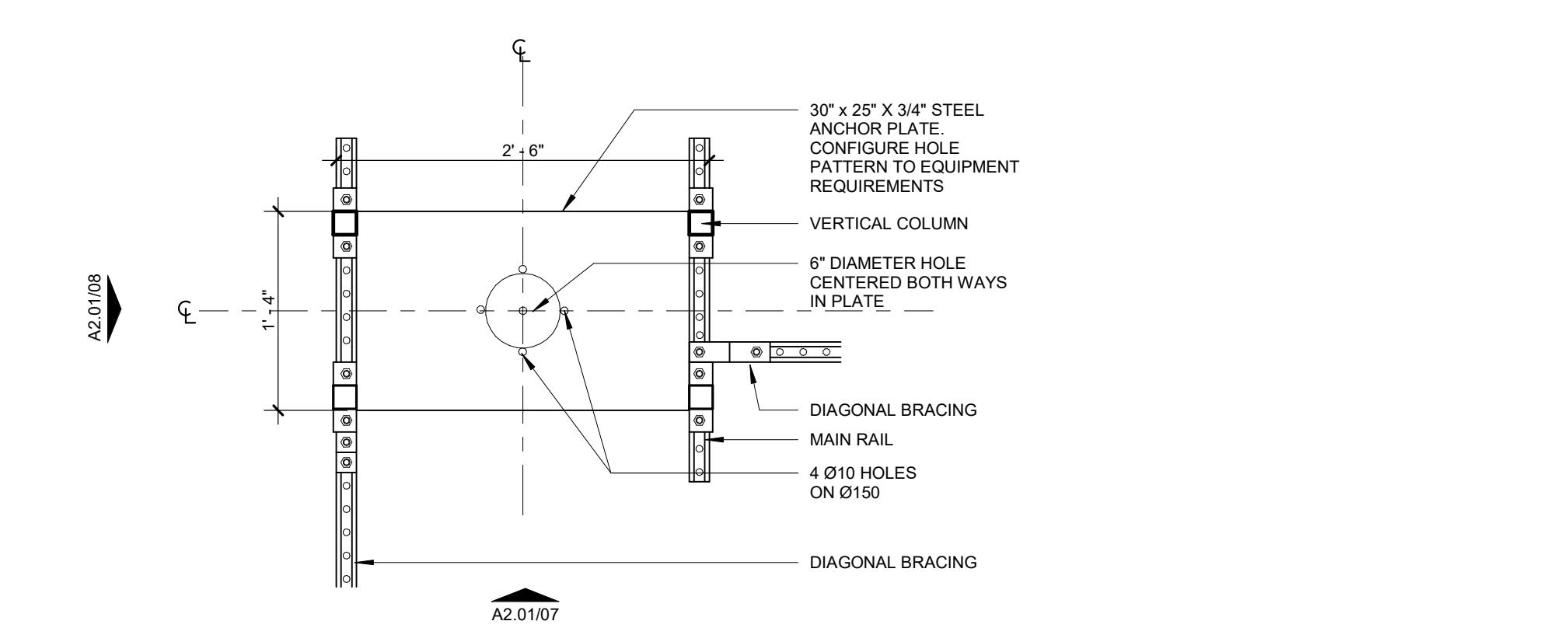
- EQUIPMENT GENERAL NOTES**
- REFER TO EQUIPMENT LIST FOR EQUIPMENT THAT MAY OCCUR AT EQUIPMENT AND SUPPLY ALCOVES
 - IT EQUIPMENT (IE PRINTERS, COPIERS) ARE OFFICE
 - FURNISHINGS ARE INDICATED ON THESE SHEETS FOR SPACIAL REFERENCE IN RELATION TO EQUIPMENT. REFER TO FURNITURE PLANS FOR SPECIFIC FURNITURE LAYOUTS / INFORMATION
 - ROOMS WITH THE NOTE TO "REF. #N#F" SHALL HAVE THE SAME EQUIPMENT AS THE ROOM REFERENCED
 - REFER TO SHEET A3.21 - 3.23 ENLARGED TOILET ROOMS FOR EQUIPMENT ITEMS IN THOSE ROOMS
 - SEE INT' LOCATIONS INDICATE AREAS WHICH MAY NOT SHOW ALL OF THE EQUIPMENT OR ACCESSORY ITEMS IN THIS AREA. REFER TO INTERIOR ELEVATIONS FOR THOSE ITEMS
 - SEE LOCATIONS ARE ELECTRICAL FLOOR BOXES. SHOWN FOR COORDINATION WITH FURNISHINGS. BOXES ARE DIMENSIONED ON THE FLOOR PLANS. SEE ELECTRICAL FOR BOX TYPE



08 CEILING MONITOR SUPPORT- SIDE VIEW
1" = 1'-0"



07 CEILING MONITOR SUPPORT- FRONT VIEW
1" = 1'-0"



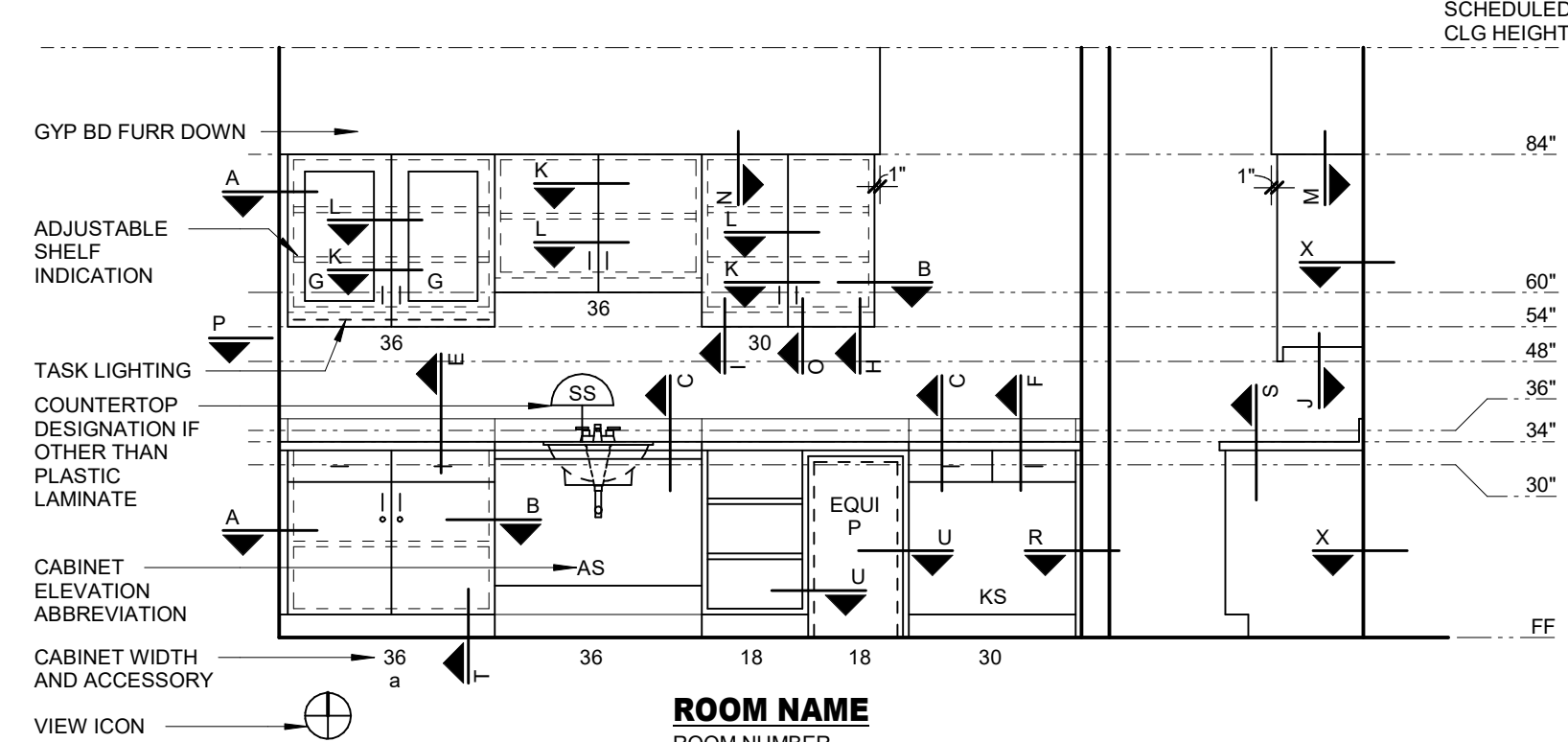
06 CEILING MONITOR SUPPORT- PLAN
1" = 1'-0"

FINISH MATERIALS SCHEDULE

FINISH CODE	MANUFACTURER	STYLE/COLOR	NOTES
ACT-1	USG	STYLE: ECLIPSE, 24"X24", WHITE, STRAIGHT EDGE, 15X16" HEAVY DUTY GRID SYSTEM, WHITE	
SHV-1	MANNINGTON	STYLE: - BIOSPEC MD, TOASTED SESAME 15333	TYPICAL SHEET VINYL FLOORING
PT-1	SHERWIN WILLIAMS	STYLE/COLOR: BISCUIT 6112, EGG SHELL	TYPICAL PAINT FOR WALLS
PL-1	PIONITE	STYLE/COLOR: PIONITE WW011, KINGSKEY, RUN GRAIN VERTICAL	TYPICAL PLASTIC LAMINATE VERTICAL SURFACES
SSM-1	LG HAUSYS	STYLE: HI-MACS, PORTLAND	TYPICAL SOLID SURFACE COUNTERTOPS / SPLASHES
PT-2	SHERWIN WILLIAMS	STYLE/COLOR: SHERWIN WILLIAMS, MATCH EXISTING DARKER BROWN COLOR	ACCENT PAINT, WHERE INDICATED
SHVB-1	MANNINGTON	STYLE: - BIOSPEC MD, TOASTED SESAME 15333	INTEGRAL BASE AT SHV-1
PT-1A	SHERWIN WILLIAMS	STYLE / COLOR: SW WEATHER SHINGLE	DOOR FRAMES, WINDOW FRAMES

CABINET LEGEND

CABINET ELEVATION LEGEND



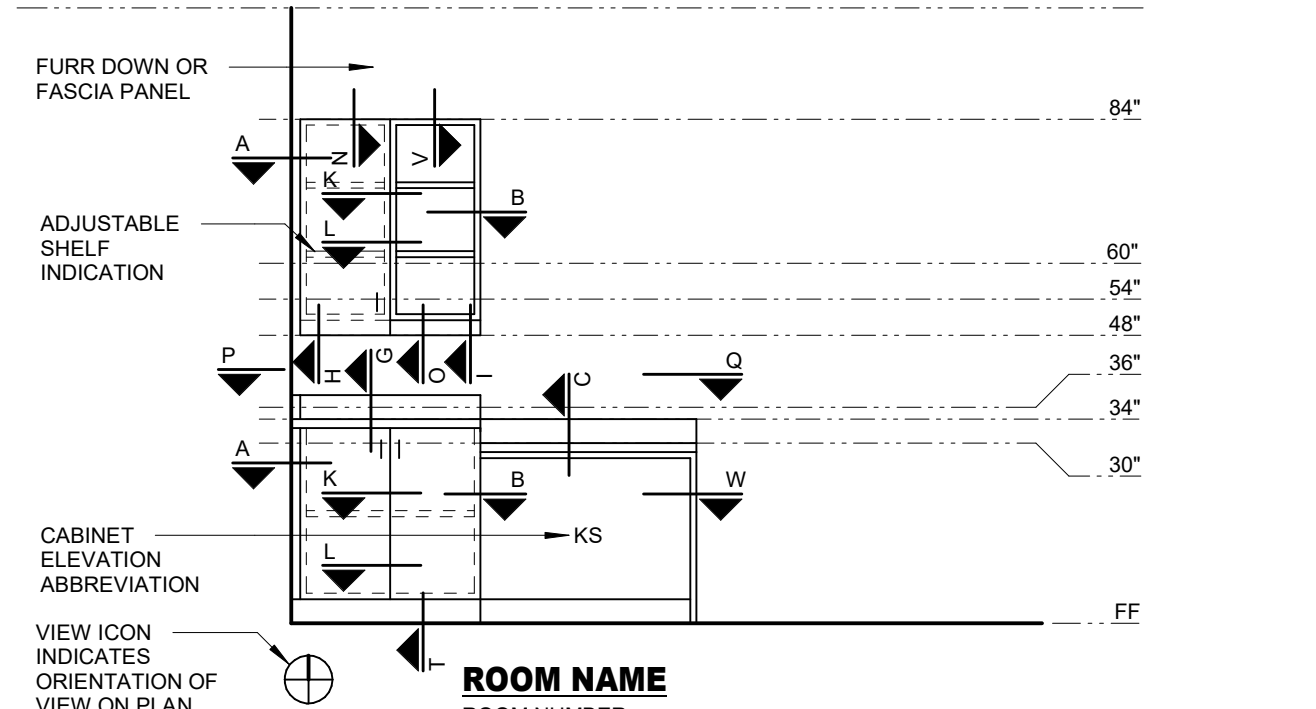
ACCESSORY LEGEND (LOWER CASE LETTERS ONLY)

- a - DRAWER / CABINET LOCK
- b - WASTE CHUTE - 6" DIA HOLE IN COUNTERTOP
- c - SLIDING WRITING SHELF
- d - GROMMET
- e - PLUMB CLAD PANEL INSERT TO MATCH CABINET DOOR / DRAWERS
- f - COUNTERTOP SUPPORT BRACE - SEE CABINET DETAIL 'Y'

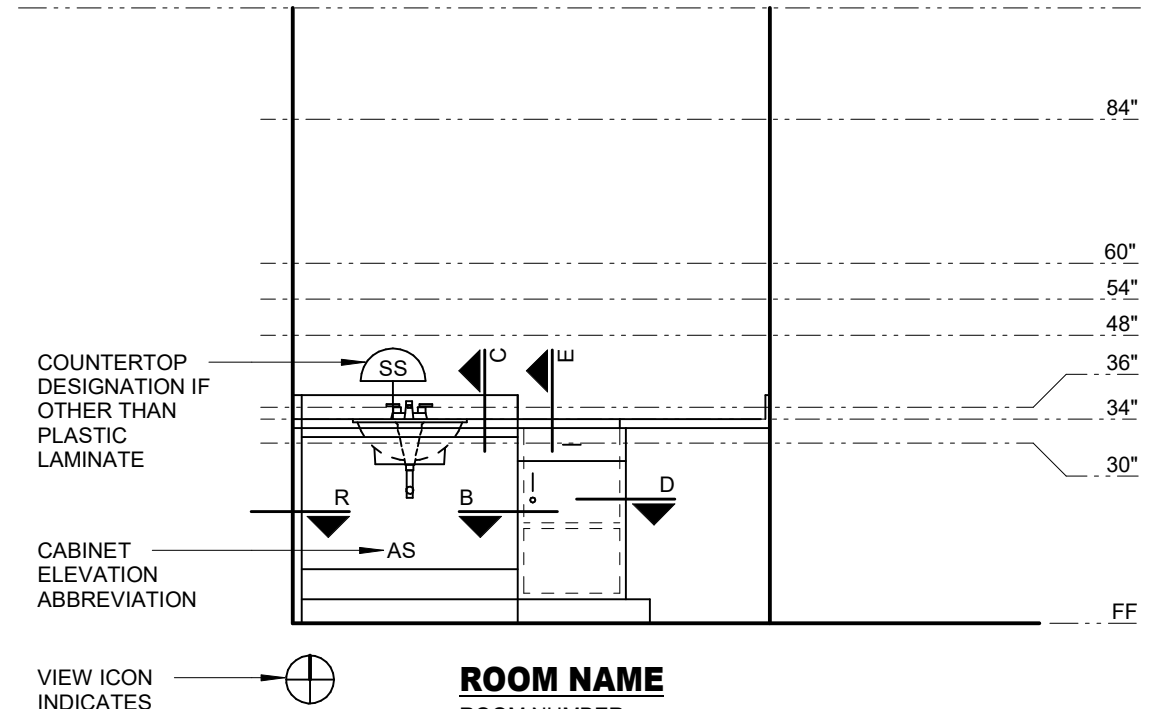
ELEVATION ABBREVIATION LEGEND

- AS - ACCESSIBLE SINK
- F - FILE DRAWER
- FS - FIXED SHELF
- FP - FILLER PANEL
- KB - KEYBOARD DRAWER
- KS - KNEE SPACE
- G - GLASS FRONT
- TL - TASK LIGHTING

CABINET ELEVATION LEGEND



CABINET ELEVATION LEGEND

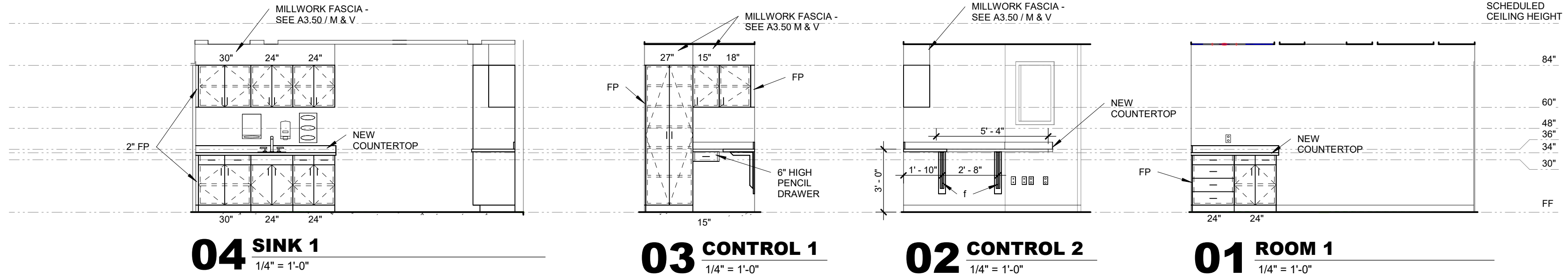
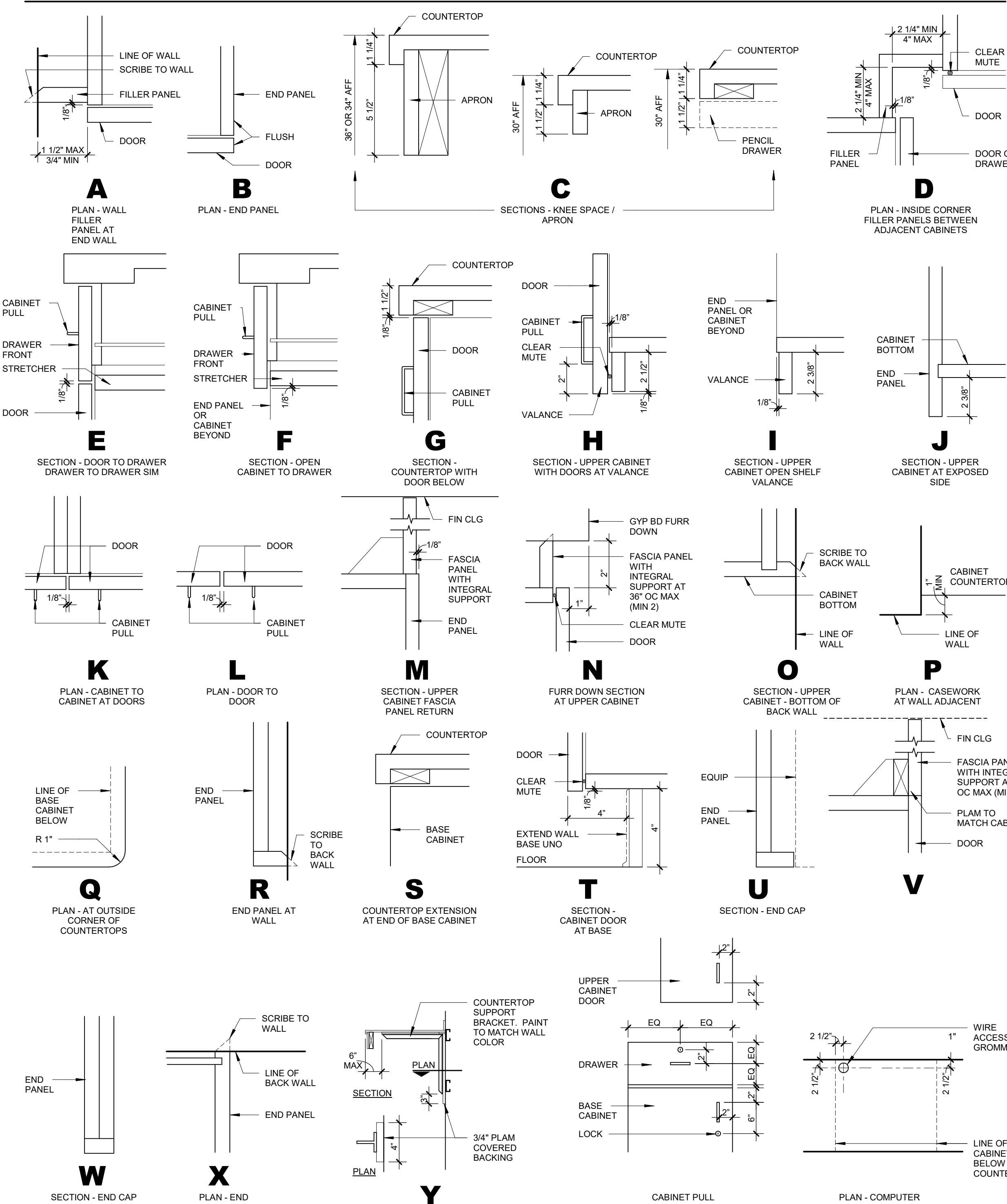


CABINET GENERAL NOTES

- CABINET WIDTHS TO BE BASED ON MODULE INCREMENTS OF 3" UNO.
- PROVIDE FILLER PANELS TO FINISH OUT TO SCRIBE CABINETS TO WALL.
- PROVIDE FILLER PANELS AND TRIM WHERE EQUIPMENT IS LOCATED WITHIN CABINETS.
- PROVIDE FINISHED END PANELS END RETURNS AT OPEN ENDED CABINETS, KNEE SPACES, AND ACCESSIBLE SINKS.
- PROVIDE 1 1/2" THICK FINISHED END PANEL AT FREE STANDING END OF ACCESSIBLE SINKS AND KNEE SPACES.
- WHEN FILLER PANELS ARE REQUIRED AT BOTH ENDS OF CASEWORK TERMINATION, BOTH FILLER PANELS SHALL BE EQUAL WIDTH.
- PROVIDE WALL BRACKET SUPPORTS AT 36" OC MAX TO SUPPORT COUNTERTOP AT CONTINUOUS KNEE SPACE.
- PROVIDE END SPLASH WHEN COUNTERTOP IS ADJACENT TO WALL AT SIDES.

- PROVIDE HOLES FOR GROMMETS IN COUNTERTOPS AND AT THE FOLLOWING LOCATIONS:
 - 1 EACH WIRE ACCESS HOLE WITH GROMMET AT KNEE SPACE.
 - WIRE ACCESS HOLES WITH GROMMETS AS INDICATED.
- PROVIDE ADJUSTABLE SHELVES IN CABINETS AT THE FOLLOWING LOCATIONS UNO ON ELEVATIONS:
 - BASE CABINET - 1 SHELF
 - FULL HEIGHT CABINET - 5 SHELVES, 1 FIXED
 - WALL CABINET - 1 SHELF AT 24" HIGH, 2 SHELVES AT TALLER CABINETS
 - NOTE: ALL SHELVES TO BE 1" THICK
- GLASS FRONTS TO BE 1/4" THICK CLEAR TEMPERED GLASS UNO.
- PROVIDE AN APRON AT ALL KNEE SPACES 30" OR HIGHER UNO.

ARCHITECTURAL CABINET TYPICAL DETAILS



DEMOLITION LEGEND

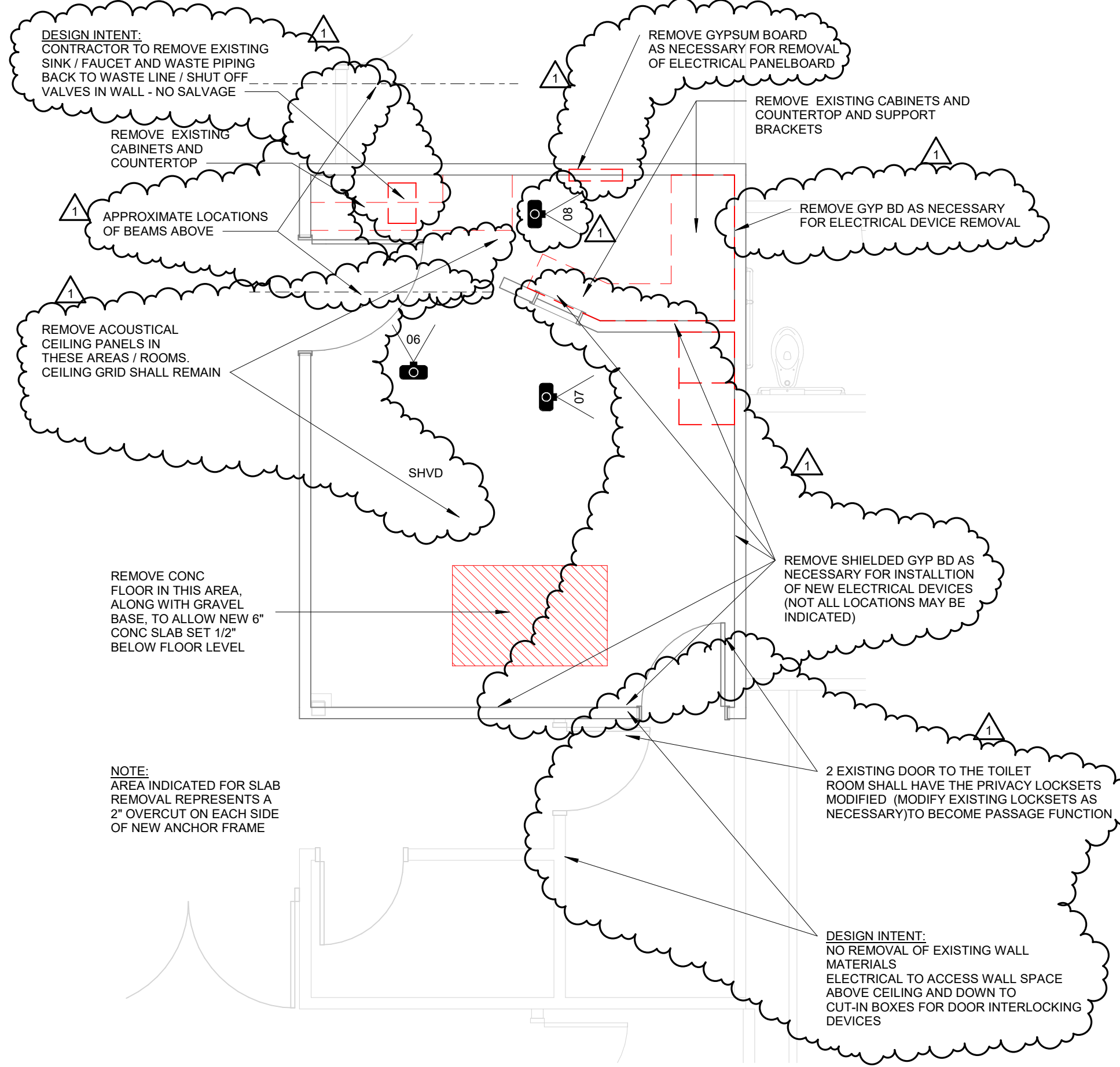
- INDICATES WALLS TO BE REMOVED (WALLS EXTEND TO ABOVE CEILING TYP)
- MILLWORK, DOORS, ETC. TO BE REMOVED, TYP SEE DEMOLITION NOTES FOR SPECIFIC INFORMATION CONCERNING ITEMS INDICATED.
- DOOR AND/OR FRAME TO BE REMOVED, SEE DEMOLITION NOTES FOR SPECIFIC INFORMATION ABOUT OPENINGS

DEMOLITION NOTES

- DEMOLITION SHALL INCLUDE REMOVAL OF ALL FLOORING ADHESIVES DOWN TO CONCRETE SLAB ON GRADE, READY FOR FINAL FLOOR FINISH
- OWNER SHALL REMOVE ALL EQUIPMENT AND ACCESSORIES FROM AREAS BEING REMODELED THIS INCLUDES, BUT IS NOT LIMITED TO, MEDICAL EQUIPMENT, CHART HOLDERS, SIGNAGE, BROCHURE RACKS, TOILET ACCESSORIES, PICTURES, COMPUTER EQUIPMENT, ETC.
- ITEMS TO BE SALVAGED ARE DESIGNATED ON THE PLANS OR AS NOTED BELOW:
 - (A) REFER TO UTILITY DRAWINGS FOR ITEMS UNDER VARIOUS DISPLINES TO BE SALVAGED
- DEMOLITION SHALL FOLLOW OWNER'S ICRA REQUIREMENTS. TEMPORARY WALLS SHALL SEAL AGAINST EXISTING ROOF DECK. REMOVE AND REPLACE EXISTING STICK PILED INSULATION AT UNDERSIDE OF ROOF DECK AS NECESSARY FOR PROPER WALL SEAL.
- REFER TO FINISH PLAN FOR FLOORING REMOVAL EXTENTS WHERE PARTIAL REMOVAL IS REQUIRED
- REFER TO ROOF DEMOLITION PLAN FOR ROOF ELEMENTS / ROOF DEMOLITION PICTURES
- DEMOLITION AREA PICTURES ARE INDICATED BY SYMBOL REFER TO PICTURE INDICATED NEXT TO SYMBOL.

DEMOLITION KEYED NOTES

- SHVD - SHEET VINYL FLOORING AND INTEGRAL COVE BASE TO BE REMOVED. COORDINATE EXTENT AT EXISTING ROOMS WITH FINISH PLAN
- SPSA - GYPSUM BOARD REMOVAL ON WALLS IN THIS ROOM AS NECESSARY FOR UTILITY WORK IN WALL CAVITY. COORDINATE EXTENT WITH UTILITY DRAWINGS (NOT ALL LOCATIONS ARE NOTED)
- SGOZ - SLAB ON GRADE DEMOLITION FOR UNDERSLAB UTILITY DEMOLITION / REMODEL WORK. APPROXIMATE AREA SHOWN HATCHED.



05 FLUOROSCOPY DEMO PLAN



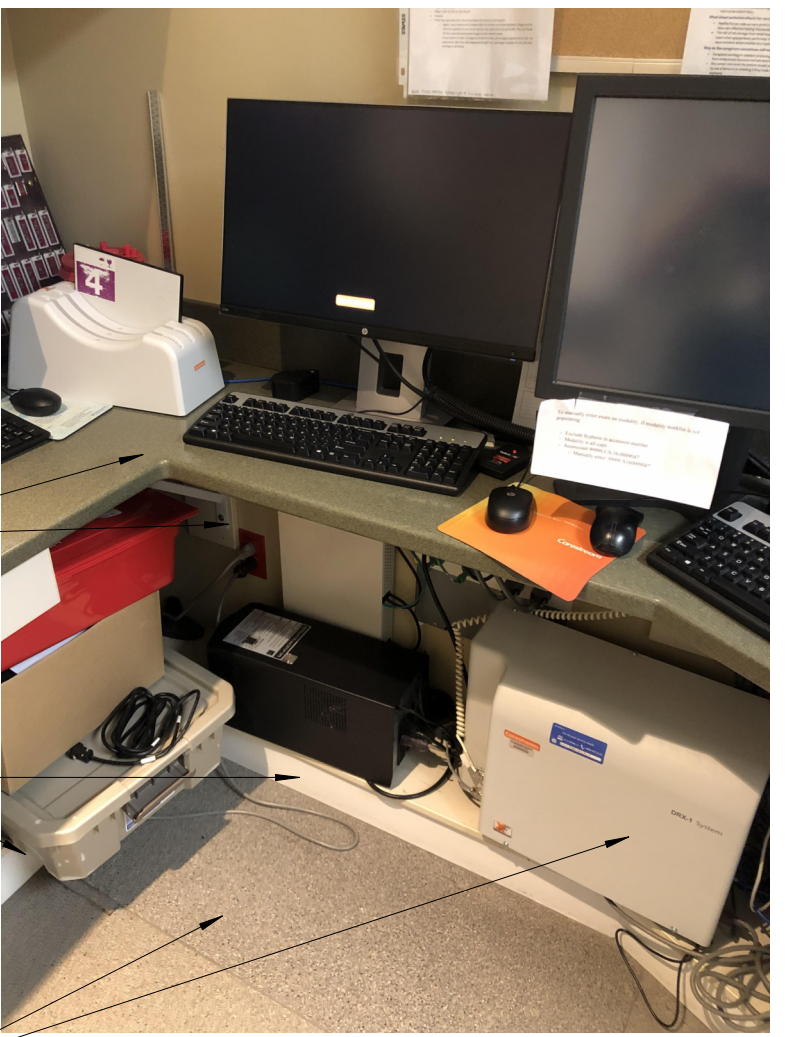
06 DEMO 1
1/4" = 1'-0"



07 DEMO 2
1/4" = 1'-0"

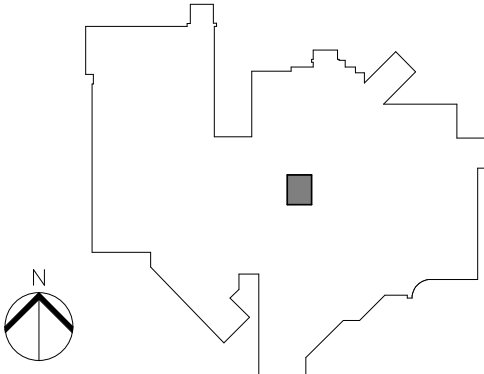


08 DEMO 3
1/4" = 1'-0"



SEAL & SIGNATURE

KEY PLAN



REVISION NO.	DESCRIPTION	DATE
1	ADDENDUM 1	8/8/2024

HKS PROJECT NUMBER
26651.000
DATE
06/20/2024
ISSUE
CONSTRUCTION DOCUMENTS
SHEET TITLE
DEMOLITION PLAN / CABINET INFORMATION / INTERIOR ELEVATIONS

PRODUCT SPECIFICATIONS

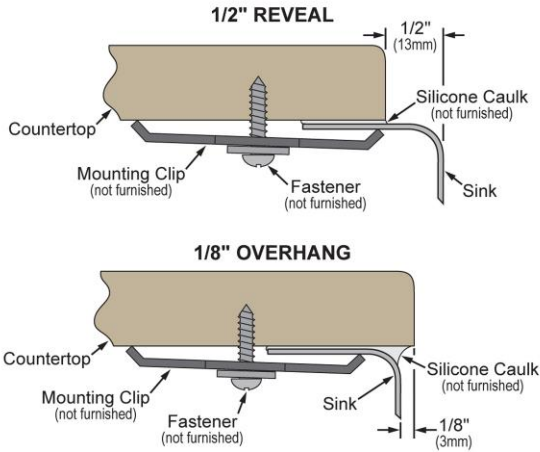
Lustertone[®] Classic Stainless Steel, 14-1/2" x 14-1/2" x 5-1/2" Single Bowl Undermount ADA Sink w/Perfect Drain[®]. Sink is manufactured from 18 gauge 304 Stainless Steel with a Lustrous Satin finish, Center drain placement, and Bottom only pads.

Installation Type:	Undermount
Material:	304 Stainless Steel
Special Features:	Perfect Drain
Finish:	Lustrous Satin
Gauge:	18
Sound Deadening:	Bottom only pads
Number of Bowls:	1
Sink Dimensions:	14-1/2" x 14-1/2" x 5-1/2"
Bowl 1 Dimensions:	12" x 12" x 5-3/8"
Drain Size:	3-1/2" (89mm)
Drain Location:	Center
Minimum Cabinet Size:	18"
Template Included:	Yes
Cutout Template #:	1000001423

Template is available for download at [elkay.com](#). CAD software will be required to open the template.

Perfect Drain: Seamlessly welded stainless steel collar eliminates the gap between a traditional drain and the sink for a more sanitary and gap free installation. Select garbage disposers can be installed on either sink bowl for user convenience. Please see our Garbage Disposer Compatibility Guide.

Installation Profile:



Designed to affix to the underside of any solid surface countertop.

PART: _____ QTY: _____

PROJECT: _____

CONTACT: _____

DATE: _____

NOTES: _____

APPROVAL: _____

In keeping with our policy of continuing product improvement, Elkay reserves the right to change product specifications without notice. Please visit [elkay.com](#) for the most current version of Elkay product specification sheets. This specification describes an Elkay product with design, quality, and functional benefits to the user. When making a comparison of other producers' offerings, be certain these features are not overlooked.



Included with Product: One LKPD1 Perfect Drain and strainer.

A Century of Tradition and Quality. For more than 100 years, Elkay has been making innovative products and providing exceptional customer care. We take pride in offering plumbing products that make life easier, inspire change and leave the world a better place.



Product Compliance: ADA & ICC A117.1
ASME A112.19.3/CSA B45.4
Accessory: ASME A112.18.2/CSA B125.2

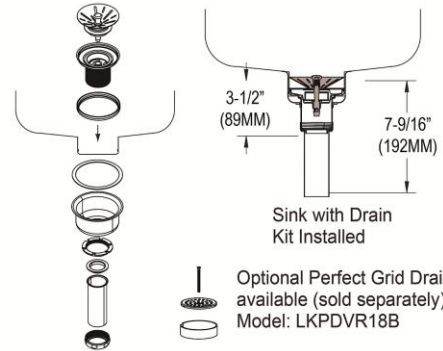
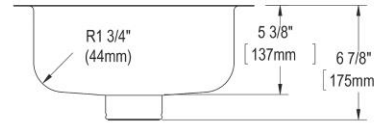
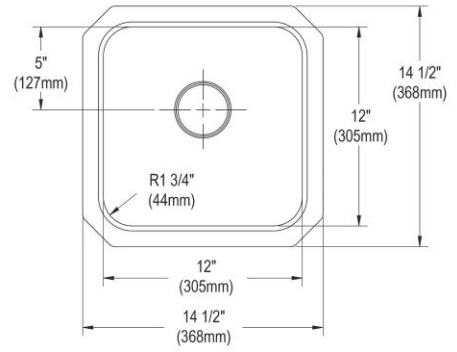
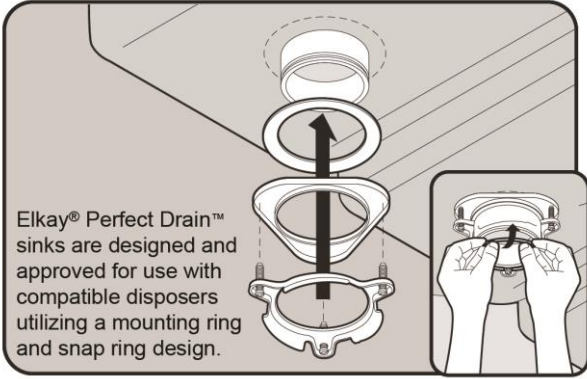






Sinks are listed by IAPMO[®] as meeting the applicable requirements of the Uniform Plumbing Code[®], International Plumbing Code[®], and National Plumbing Code of Canada.







Complies with ADA & ICC A117.1 accessibility requirements when installed according to the requirements outlined in these standards.

- [Clean and Care Manual \(PDF\)](#)
- [Installation Instructions \(PDF\) - 1000005239](#)
- [Installation Instructions \(PDF\) - 74180289 Disposer](#)
- [Installation Instructions \(PDF\) - 74180340-USA Drain](#)
- [Installation Instructions \(PDF\) - Garbage Disposer Compatibility Guide](#)
- [Warranty \(PDF\)](#)



Included Accessories		
LKPD1	Perfect Drain [®] Fitting Type 304 Stainless Steel Body and Strainer Spec Sheet (PDF)	
Optional Accessories		
CB912	Hardwood 12-7/8" x 10-1/8" x 1" Cutting Board Spec Sheet (PDF)	
LKDS99	3-1/2" Garbage Disposal Stopper / Strainer for use with Perfect Drain [®] -Chrome Polished Stainless Steel Spec Sheet (PDF)	
LKPDAD18B	Perfect Drain [®] Chrome Plated Brass Body Strainer and LKADOS Tailpiece Spec Sheet (PDF)	

In keeping with our policy of continuing product improvement, Elkay reserves the right to change product specifications without notice. Please visit elkay.com for the most current version of Elkay product specification sheets. This specification describes an Elkay product with design, quality, and functional benefits to the user. When making a comparison of other producers' offerings, be certain these features are not overlooked.

LKPDVR18B	Perfect Drain [®] Chrome Plated Brass Body Vandal-resistant Strainer Spec Sheet (PDF)	
LKGT1042	Elkay Gourmet Single Hole Bar Faucet Pull-out Spray and Lever Handle Spec Sheet (PDF)	
LKW RB1209SS	Elkay Stainless Steel 8" x 11" x 7" Rinsing Basket Spec Sheet (PDF)	
LKWUCSS	Elkay [®] Stainless Steel 3-1/2" x 5-1/8" x 4-3/8" Utensil Caddy Spec Sheet (PDF)	

In keeping with our policy of continuing product improvement, Elkay reserves the right to change product specifications without notice. Please visit elkay.com for the most current version of Elkay product specification sheets. This specification describes an Elkay product with design, quality, and functional benefits to the user. When making a comparison of other producers' offerings, be certain these features are not overlooked.

Manual Sink Faucets 786-GN8FCXKABCP

Product Type

Deck-mounted manual faucet with 8" centers

Features & Specifications

- 1.5 GPM (5.7 L/min) laminar flow control insert in spout inlet
- Handles include color-coded index
- 8" fixed centers
- 8" rigid/swing gooseneck spout with ~~1.5 GPM flow control~~
- Vandal Proof 4" wristblade handle
- Ceramic 1/4-turn operating cartridge, left-hand
- Ceramic 1/4-turn operating cartridge, right-hand
- ECAST® design provides durable cast brass construction with total lead content equal to or less than 0.25% by weighted average
- Complies with the requirements of the Buy American Act of 1933.
- CFNow! Item Ships in 3 Days

0.5 GPM LAMINATE FLOW CONTROL

PROVIDE WATTS
LFUSG-B-M2
THERMOSTATIC MIXING
VALVE WITH SLOAN
BASYS EFTT-470-A
CHECK VALVES ON HOT
AND COLD WATER

PROVIDE CHICAGO
327-XCP OPEN GRID
STRAINER AND CAST
BRASS P-TRAP WITH
CLEAN OUT PLUG





Performance Specification

- Rated Operating Pressure: 20-125 PSI
- Rated Operating Temperature: 40-140°F

Warranty

- 5-Year Limited Cartridge Warranty
- Lifetime Limited Faucet Warranty
- 1-Year Limited Finish Warranty

Codes & Standards

-  ADA ANSI/ICC A117.1
-  ASME A112.18.1/CSA B125.1
-  NSF/ANSI/CAN 61: Q ≤ 1
-  Certified to WaterSense by ICC-ES

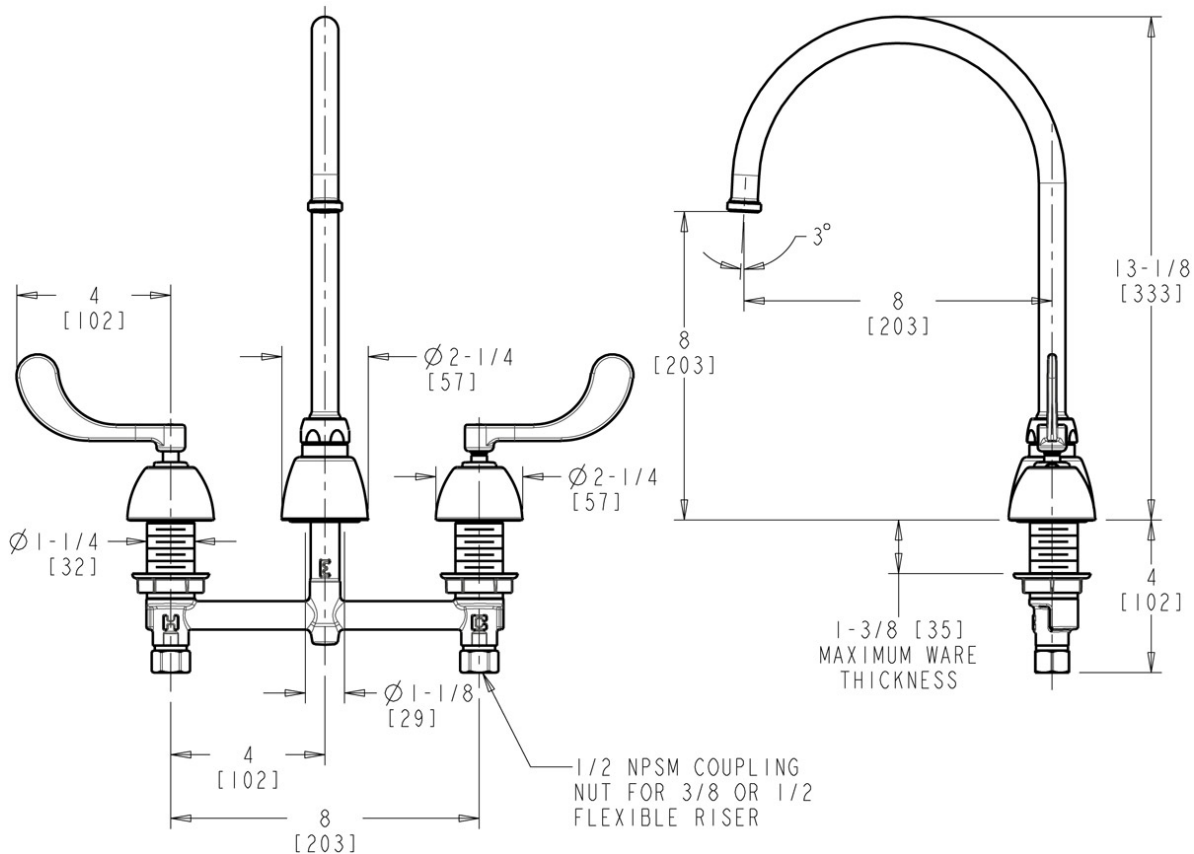


ECAST

ECAST products are intended for installation where state laws and local codes mandate lead content levels or in any location where lead content is a concern.

Architect/Engineer Specification

Chicago Faucets No. 786-GN8FCXKABCP, Sink Faucet for hot and cold water, concealed deck-mount with 8" fixed centers, chrome plated. Rigid/swing gooseneck spout with flow control, 8" center-to-center. 1.5 GPM (5.7 L/min) laminar flow control insert in spout inlet. 4" metal, vandal-proof, wristblade handles with sixteen-point, tapered broach and secured blue and red index buttons. Ceramic quarter-turn cartridge, features square, tapered stem. 1/2" NPSM supply inlets and coupling nut for 3/8" or 1/2" flexible riser. ECAST® construction with less than 0.25% lead content by weighted average. This product meets ADA ANSI/ICC A117.1 requirements and is tested and certified to industry standards: ASME A112.18.1/CSA B125.1, and Certified to NSF/ANSI 61, Section 9.



Operation and Maintenance

Installation should be in accordance with local plumbing codes. Flush all pipes thoroughly before installation. After installation, remove spout outlet or flow control and flush faucet thoroughly to clear any debris. Care should be taken when cleaning the product. Do not use abrasive cleaners, chemicals or solvents as they can result in surface damage. Use mild soap and warm water for cleaning and protecting the life of Chicago Faucet products. For specific operation and maintenance refer to the installation instructions and repair parts documents that are located at www.chicagofaucets.com.

Chicago Faucets, member of the Geberit Group, is the leading brand of commercial faucets and fittings in the United States, offering a complete range of products for schools, laboratories, hospitals, office buildings, food service, airports and sport facilities. Call 1.800.TECTRUE or 1.847.803.5000 Option 1 for installation or other technical assistance.



TITLE BLOCK VERSION: 20210830
 MODEL: C:\Users\jacob@hks.com\SPECTRUM\ENGINEERS\Documents\240421\Elec2\Level 1\Replac\Replac.dwg
 PRINT DATE: 06/26/2024 10:27:23 AM
 TEMPLATE VERSION: 21124

GENERAL SHEET NOTES

- 1 UNLESS NOTED OTHERWISE REMOVE ALL LIGHTING FIXTURES DEVICES AND EQUIPMENT SHOWN DASHED. REMOVE CONDUIT AND WIRING BACK TO PANELBOARD OF ORIGIN OR TO FIRST ACTIVE DEVICE THAT REMAINS.
- 2 PRIOR TO SUBMITTING BID, VISIT THE SITE AND FIELD VERIFY THE EXTENT OF ELECTRICAL DEMOLITION WORK TO MEET THE INTENT OF THE BID DOCUMENTS AND INCLUDE ALL COSTS IN BID.
- 3 PRIOR TO REMOVAL OF ANY ELECTRICAL EQUIPMENT OR WIRING, FIELD VERIFY THAT THE EQUIPMENT OR WIRING IS INACTIVE OR NO LONGER IN USE.
- 4 REMOVE ALL ABANDONED RACEWAY, CONDUIT, WIRING AND CABLING WHETHER ABANDONED PREVIOUS TO THIS PROJECT OR AS A RESULT OF THIS PROJECT. NOT ALL ABANDONED ITEMS ARE SHOWN ON THESE PLANS AND FIELD VERIFICATION OF DEMOLITION SCOPE EXTENT IS REQUIRED.
- 5 DEVICES MARKED "RR" ARE TO BE REMOVED AND RELOCATED PER NEW PLANS. EXTEND CIRCUITING AS REQUIRED FOR RELOCATION.
- 6 REMOVE FEEDERS FOR ALL DEMOLISHED PANELS, DISCONNECTS, ETC. BACK TO SOURCE
- 7 ALL ITEMS INDICATED TO REMAIN SHALL BE PROTECTED DURING ALL PHASES OF CONSTRUCTION.
- 8 CONTRACTOR TO TRACE AND LABEL ALL EXISTING LOADS TO REMAIN, THAT ARE CURRENTLY FED FROM PANELS THAT ARE BEING DEMOLISHED IN THIS PHASE. THESE LOADS TO BE RE-FED FROM NEW PANELS IN NEXT PHASE.

HKS

ARCHITECT
 HKS ARCHITECTS, INC.
 222 MAIN ST, ST #230
 SALT LAKE CITY, UTAH 84101

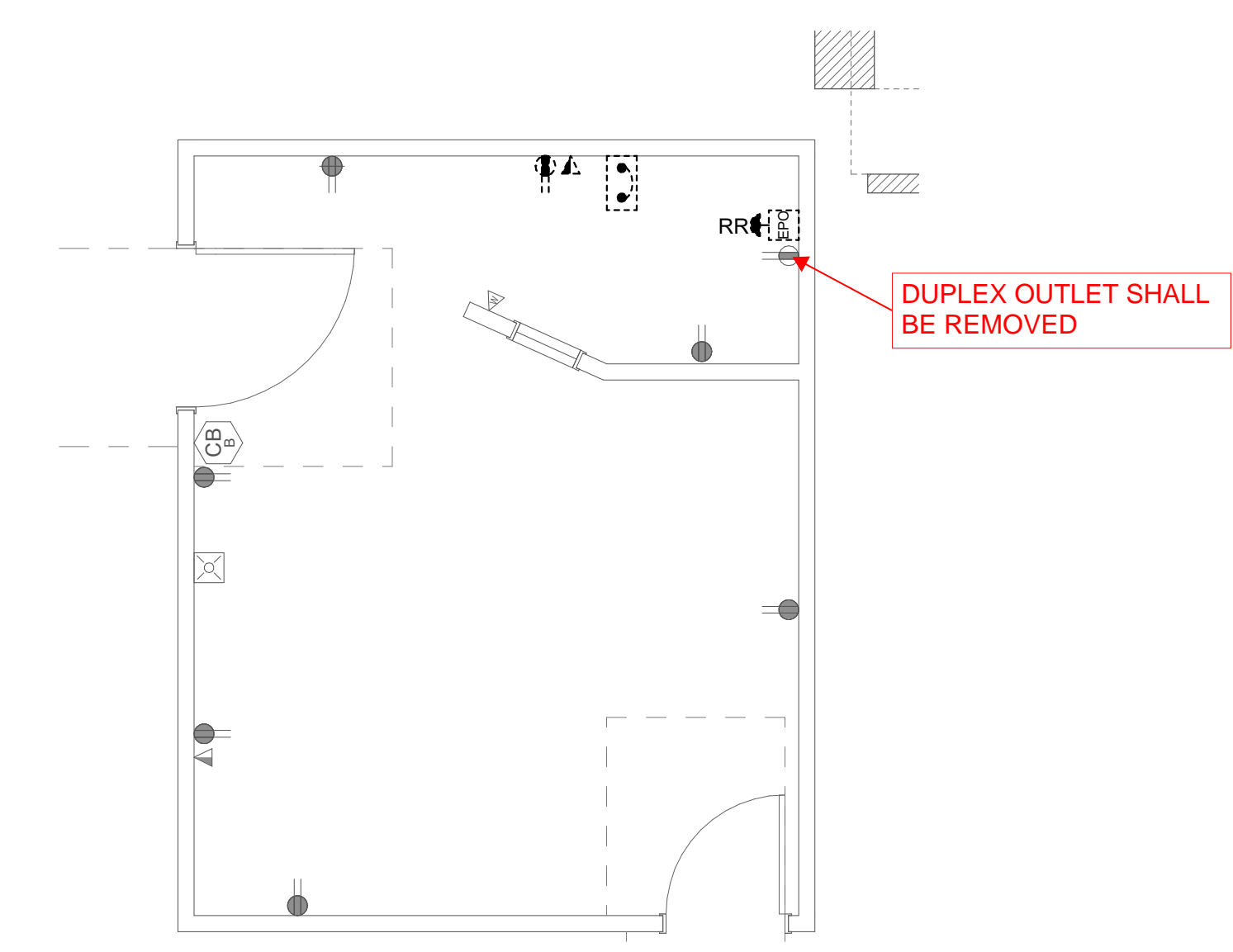
CON1-DISCIPLINE
 CON1-COMPANY
 CON1-ADDRESS1
 CON1-ADDRESS2

CON2-DISCIPLINE
 CON2-COMPANY
 CON2-ADDRESS1
 CON2-ADDRESS2

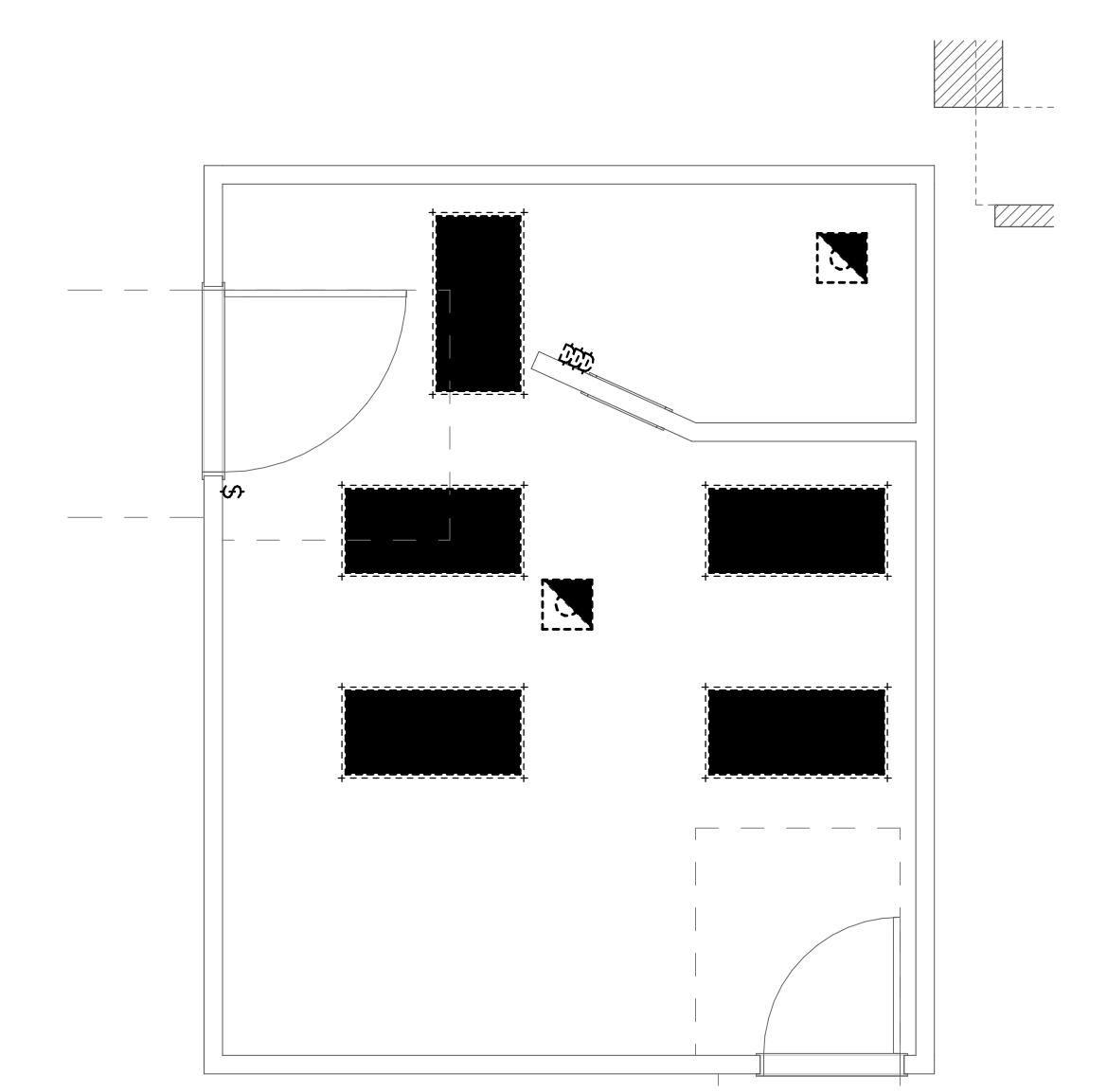
CON3-DISCIPLINE
 CON3-COMPANY
 CON3-ADDRESS1
 CON3-ADDRESS2

CON4-DISCIPLINE
 CON4-COMPANY
 CON4-ADDRESS1
 CON4-ADDRESS2

SHEET KEYNOTES



2 LEVEL 1 ELECTRICAL DEMOLITION PLAN
 SCALE: 1/4" = 1'-0"



1 LEVEL 1 CEILING DEMOLITION PLAN
 SCALE: 1/4" = 1'-0"

HEBER FLUORO REPLACEMENT

SEAL & SIGNATURE

SPECTRUM ENGINEERS
 324 S. State St., Suite 400
 Salt Lake City, UT 84111
 801-328-7077
 801-328-5151
 fax: 801-328-5155
 www.spectrum-engineers.com

KEY PLAN

REVISION NO.	DESCRIPTION	DATE

HKS PROJECT NUMBER
26651.000
 DATE
06/26/24
 ISSUE

SHEET TITLE
LEVEL 1 ELECTRICAL DEMOLITION PLAN

SHEET NO.
ED101

TITLE BLOCK VERSION: 20210830
 MODEL: C:\Users\mdund\OneDrive\SPECTRUM\ENGINEERING\Documents\240421\Elec2\Level 1\Replaces\Replaces.rvt
 PRINT DATE: 06/26/2024 10:22:50 AM TEMPLATE VERSION: 21124

GENERAL SHEET NOTES

- 1 ALL RECEPTACLES WITHIN 6' OF THE EDGE OF A SINK SHALL BE GFCI PROTECTED.
- 2 ALL WIRING IN PATIENT CARE AREAS SHALL MEET THE REQUIREMENTS OF NEC 517.13.
- 3 CONTRACTOR TO REFER TO GE IMAGING DRAWINGS FOR ADDITIONAL RESPONSIBILITIES.
- 4 PROVIDE DEDICATED NEUTRALS FOR ALL BRANCH CIRCUITS.

HKS

ARCHITECT
 HKS ARCHITECTS, INC.
 222 MAIN ST, ST #230
 SALT LAKE CITY, UTAH 84101

CON1-DISCIPLINE
 CON1-COMPANY
 CON1-ADDRESS1
 CON1-ADDRESS2

CON2-DISCIPLINE
 CON2-COMPANY
 CON2-ADDRESS1
 CON2-ADDRESS2

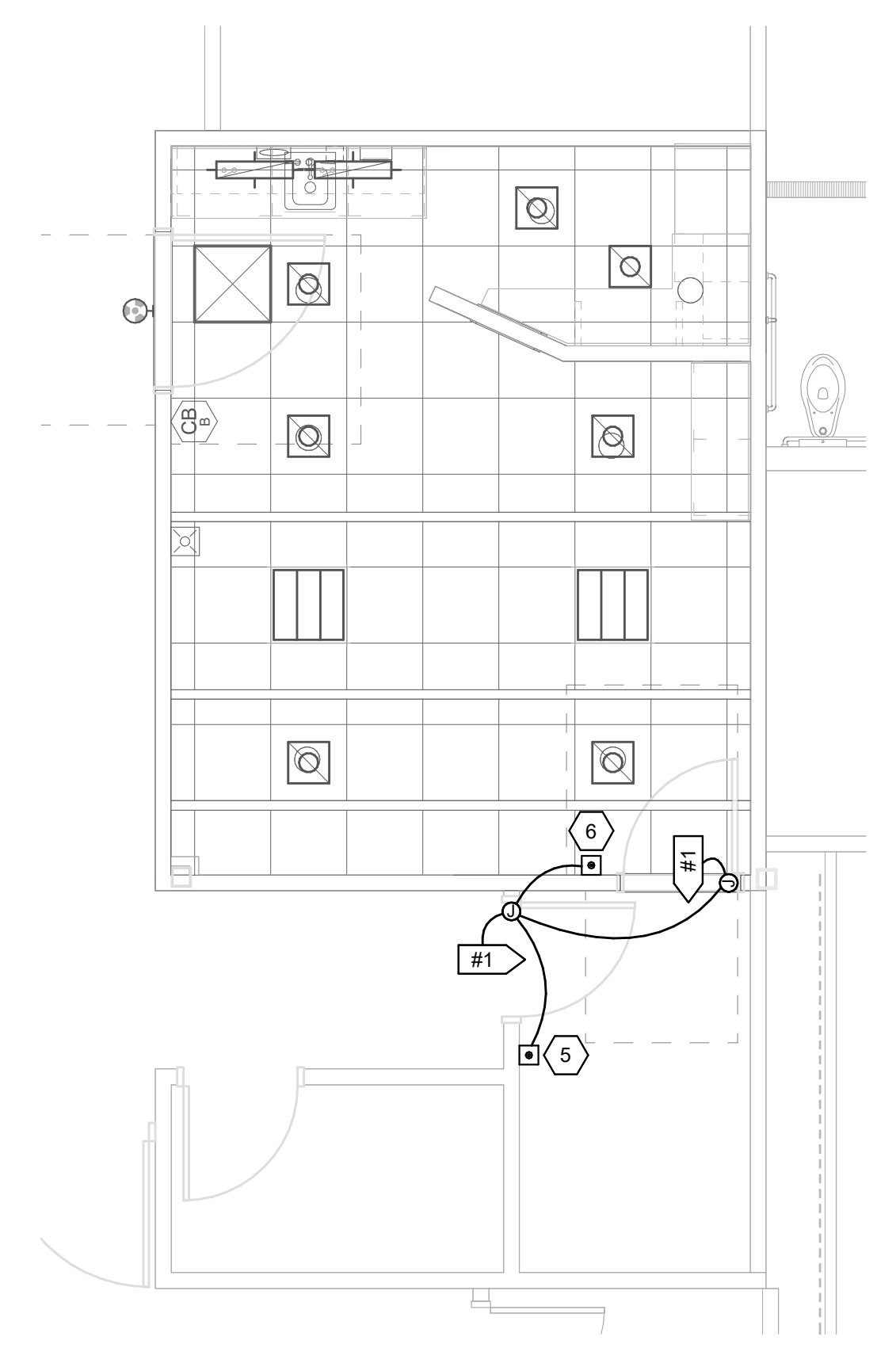
CON3-DISCIPLINE
 CON3-COMPANY
 CON3-ADDRESS1
 CON3-ADDRESS2

CON4-DISCIPLINE
 CON4-COMPANY
 CON4-ADDRESS1
 CON4-ADDRESS2

SHEET KEYNOTES

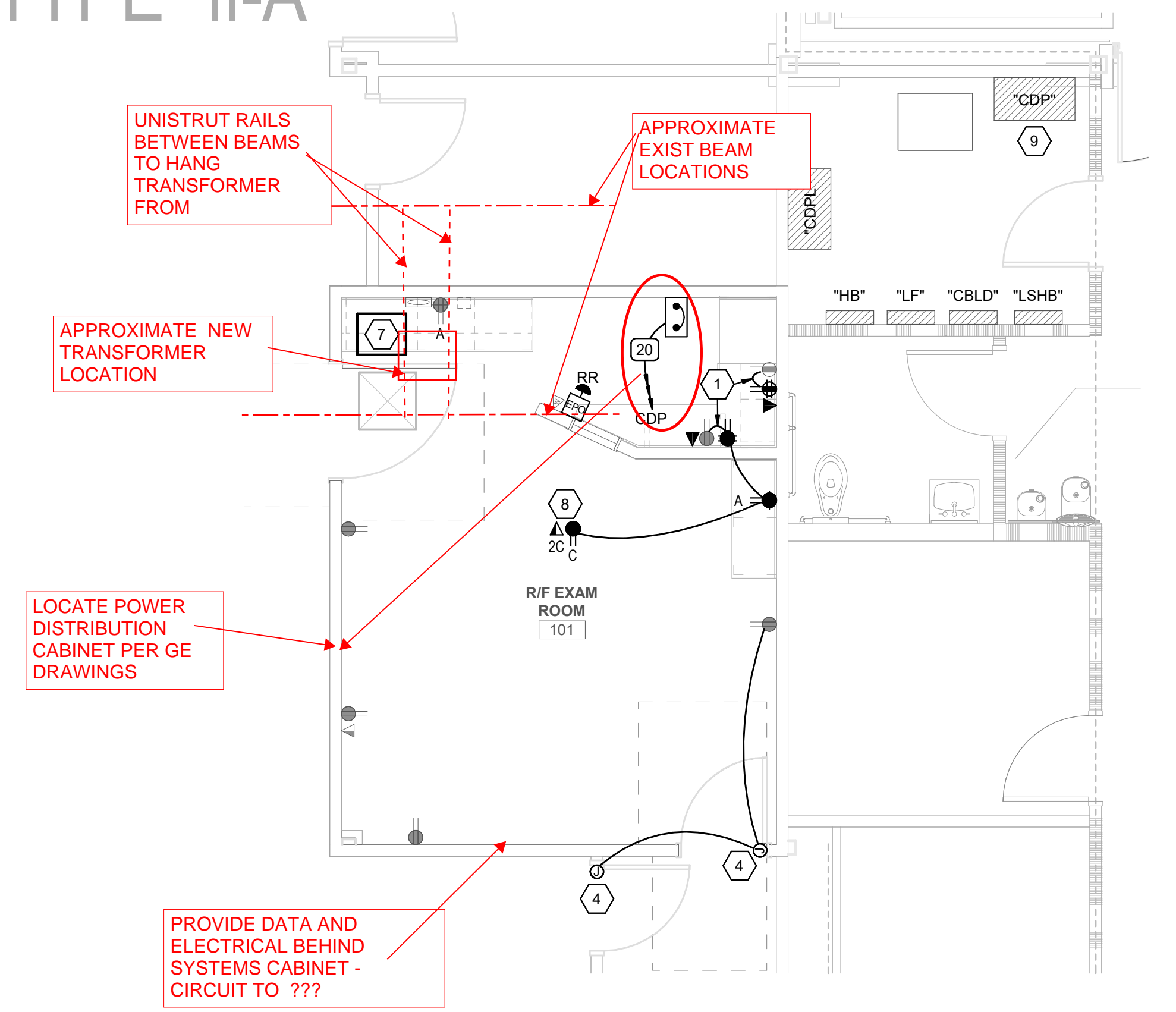
- 1 CONNECT TO THE EXISTING 120V CIRCUIT FEEDING THIS SPACE.
- 2 CONNECT TO THE EXISTING LIGHTING CIRCUIT THAT PREVIOUSLY FED THIS SPACE.
- 3 CONNECT TO A NEARBY 120V CIRCUIT. REFER TO GE DRAWING FOR ADDITIONAL "IN-USE" LIGHT REQUIREMENTS.
- 4 PROVIDE 120V CIRCUIT TO 24V TRANSFORMER FOR ELECTRICAL LOCKS.
- 5 PROVIDE PUSH BUTTON TO LOCK BOTH PATIENT TOILET DOORS.
- 6 PROVIDE PUSH BUTTON TO UNLOCK PATIENT TOILET DOORS.
- 7 MOUNT THE GE 15KVA TRANSFORMER ON UNISTRUT IN THE CEILING SPACE. PROVIDE A DISCONNECT ADJACENT TO THE EQUIPMENT.
- 8 PROVIDE 120V POWER AND DATA FOR THE BOOM.
- 9 PROVIDE A NEW 100/3P FRN FUSE IN THE EXISTING SIEMENS PANEL CDP.

LOCATION INDICATED FOR THE TRANSFORMER SHALL BE MODIFIED AS SHOWN (LOCATION SHOWN IS A MORE VACANT SPACE ABOVE THE CEILING). CONTRACTOR SHALL PROVIDE UNISTRUT RAILS (APPROPRIATE SIZED) BETWEEN EXISTING BEAMS TO SUPPORT THE TRANSFORMER

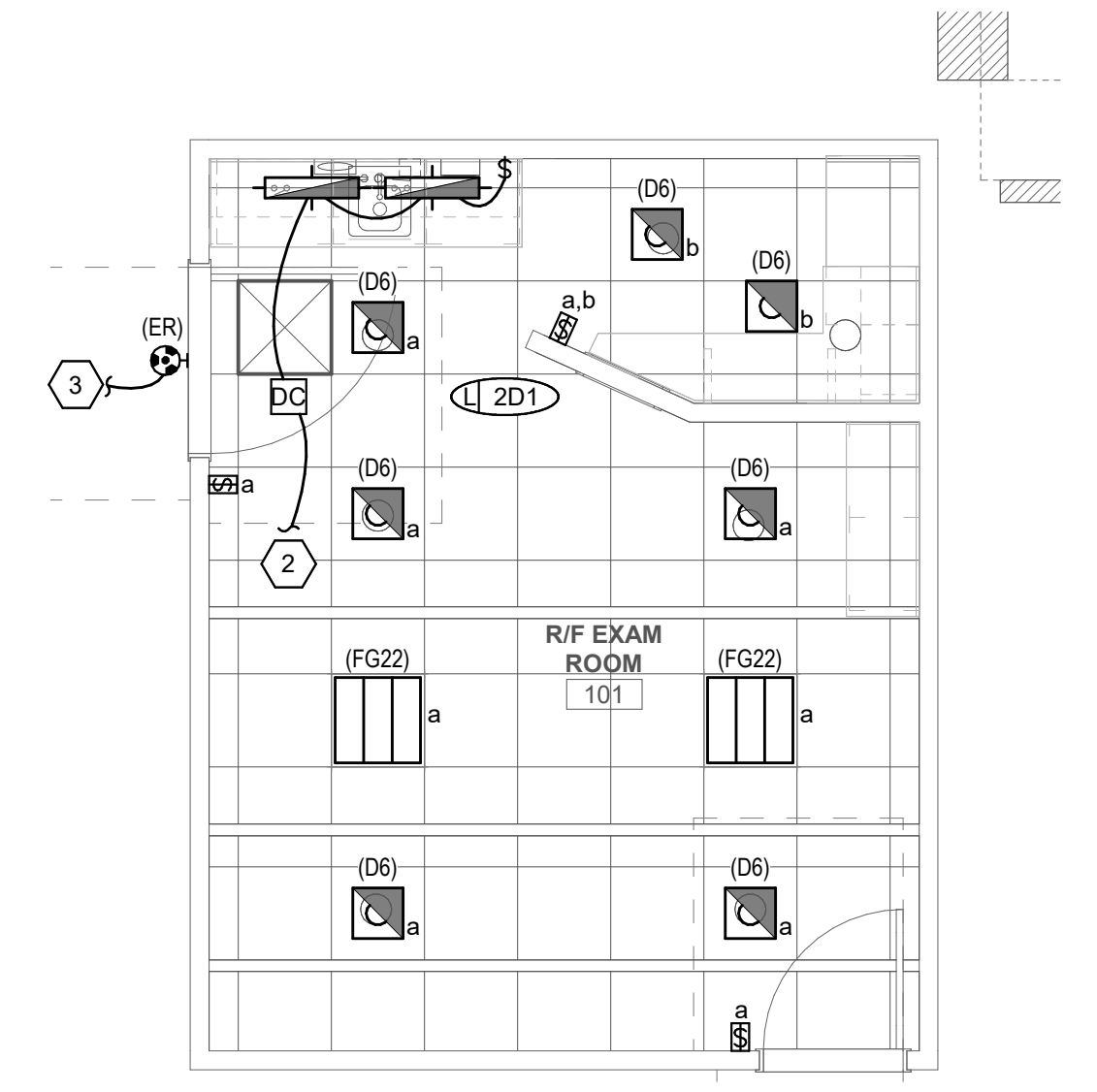


3 LEVEL 1 AUXILIARY PLAN
 SCALE: 1/4" = 1'-0"

CONSTRUCTION TYPE "II-A"



1 LEVEL 1 POWER PLAN
 SCALE: 1/4" = 1'-0"



2 LEVEL 1 LIGHTING PLAN
 SCALE: 1/4" = 1'-0"

HEBER FLUORO REPLACEMENT
 PROJECT ADDRESS:

SEAL & SIGNATURE

SPECTRUM ENGINEERS
 324 S. State St., Suite 400
 Salt Lake City, UT 84111
 801-476-7077
 801-328-5151
 fax: 801-328-5155
 www.spectrum-engineers.com

KEY PLAN

REVISION NO.	DESCRIPTION	DATE

HKS PROJECT NUMBER
26651.000
 DATE
06/26/24
 ISSUE

SHEET TITLE
LEVEL 1 ELECTRICAL PLANS

SHEET NO.
EP101