

ADDENDUM

Project: West Point Jr Seminary

Project No.: 501-9425-22020101

Addendum No.: 3

Project Address: 4342 W 920 S St, West Point, UT

Date: 5/24/2024

Owner: Corporation of the Presiding Bishop of The Church of Jesus Christ of Latter-day Saints, a Utah corporation sole

From (Architect): Uncommon Architects

Instructions to Prospective Bidders:

This Addendum forms a part of the Contract Documents and modifies the original Bidding Documents and/or prior Addenda as noted below. All conditions, requirements, materials and workmanship are to be as described in the Contract Documents unless specifically stated otherwise. This Addendum consists of 5 page(s) and the attached drawing(s), Sheet(s) listed below, dated 5/24/2024

1. Changes to prior Addenda:

- a.
- b.

2. Changes to Bidding Requirements:

- a.
- b.

3. Changes to Conditions of the Contract:

- a.
- b.

4. Changes to Specifications:

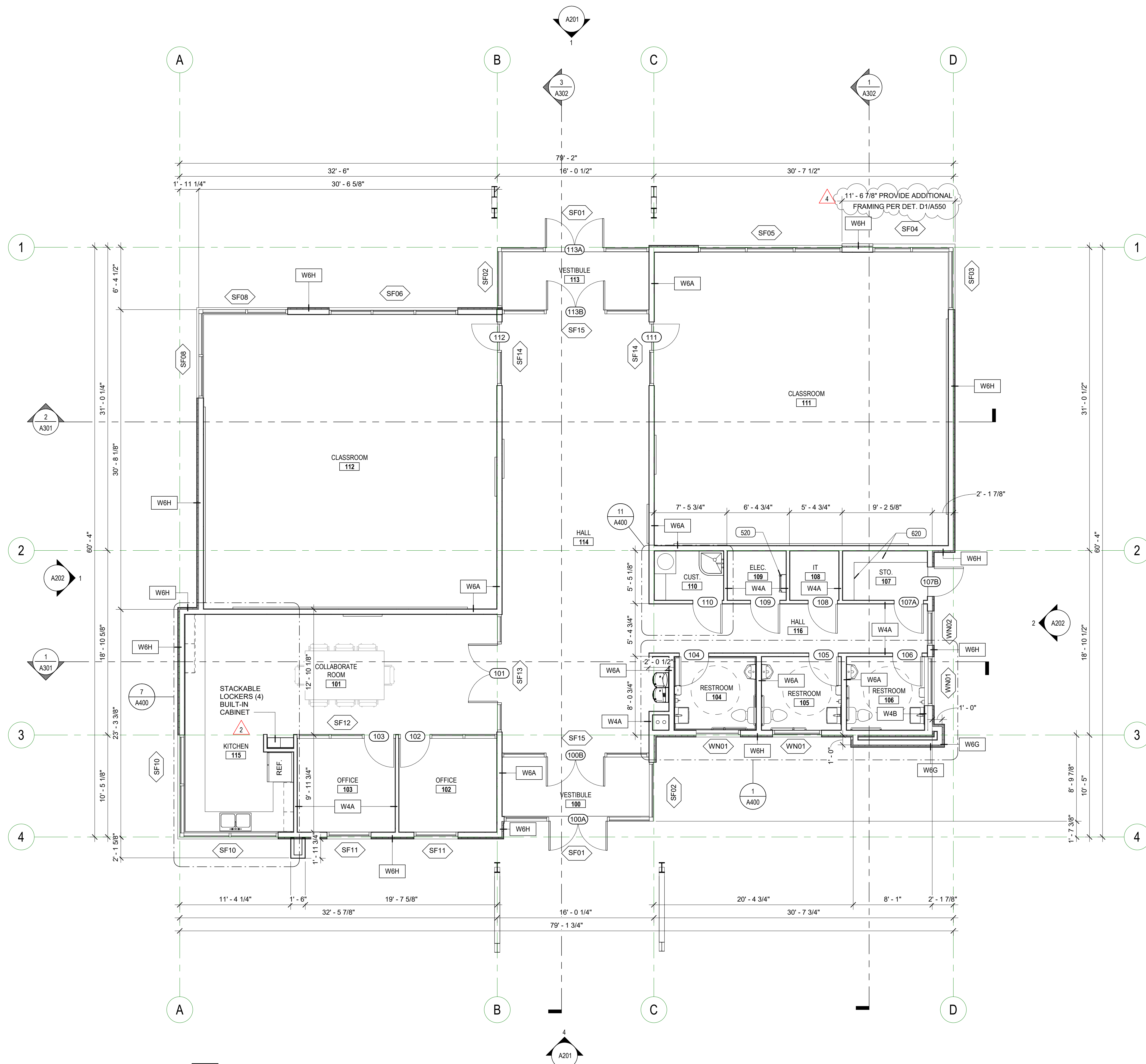
- a.
- b.

5. Changes to Drawings:

- a. Sheet A110.1 – Note added to clarify where a portion of the North wall is to be furred out. The intent is to have the two different stone colors, shown on the exterior elevations, be on different planes rather than flushed.
- b. Sheet A510 – Cap stone added at the window sills where stone veneer occurs
- c. Sheet A550 – New Detail D1 added – transition from stone veneer to aluminum siding for the portion of the wall that's being furred out.
- d. Sheet P002 – Revised Storm drain calc

End of Addendum

5/24/2024 4:03:32 PM



1 FLOOR PLAN - LEVEL 01
 3/16" = 1'-0"

DIMENSION NOTES

1. DIMENSIONS ARE GIVEN TO EXTERIOR FACE OF FOUNDATION WALL UNO
2. DIMENSIONS ARE TO FACE OF INTERIOR STUD WALL
3. PERIMETER GRIDS ARE PLACED AT EXTERIOR FACE OF MASONRY UNO
4. TOP OF FOUNDATION WALL TO BE AT 100' - 0" UNO

KEYED NOTE

- 520 ROOF ACCESS LADDER.
- 620 ADJUSTABLE SHELVES STARTING AT 18" ABOVE FLOOR UP TO 7'-0" HT. WITH PROTECTIVE EDGES, TYP.



684 W. CENTER ST.
 MIDVALE, UT 84047
 uncommonarch.com
 (801) 417-9951



THE CHURCH OF
JESUS CHRIST
 OF LATTER-DAY SAINTS

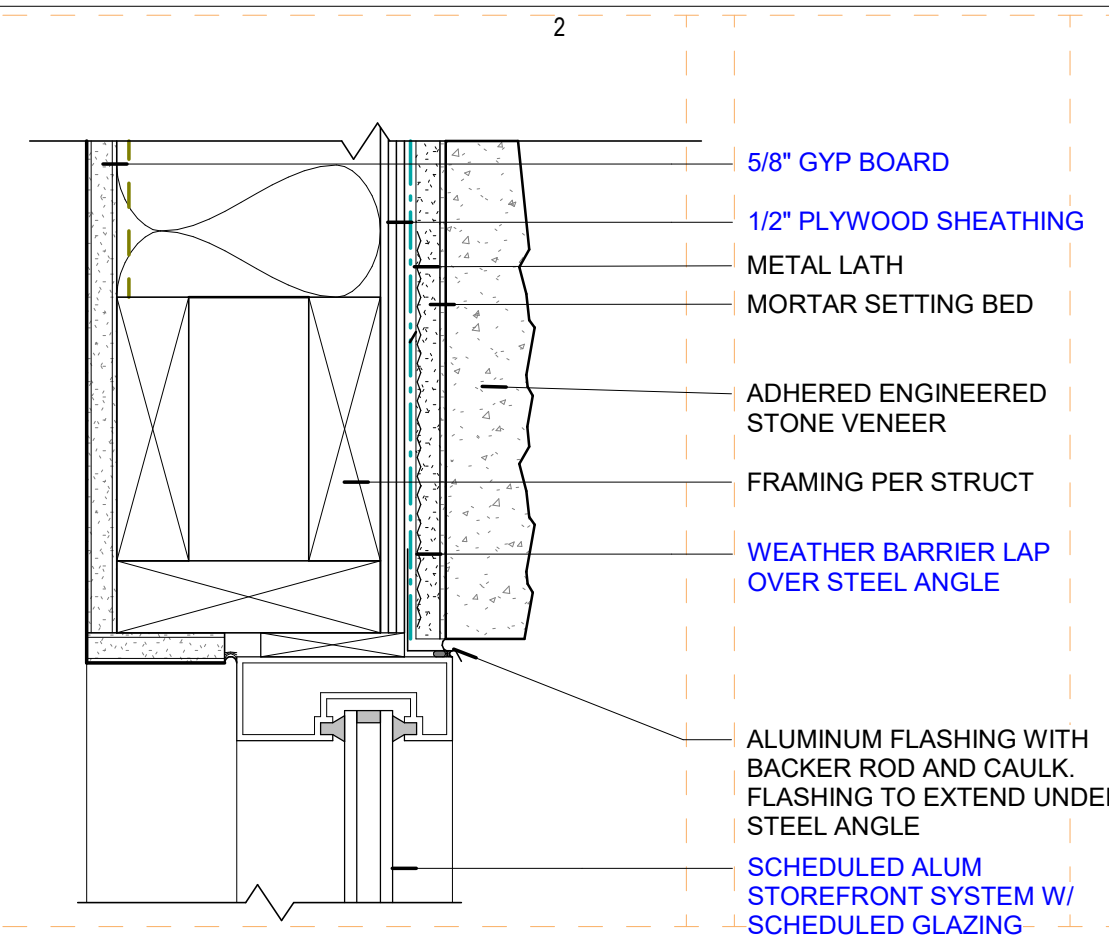
WEST POINT SEMINARY
 4342 W 920 SOUTH ST., WEST POINT, UTAH
 BID SET

JOB NUMBER: 501-9425
OWNER: The Church of Jesus Christ of Latter-Day Saints
DATE: 05.08.2024

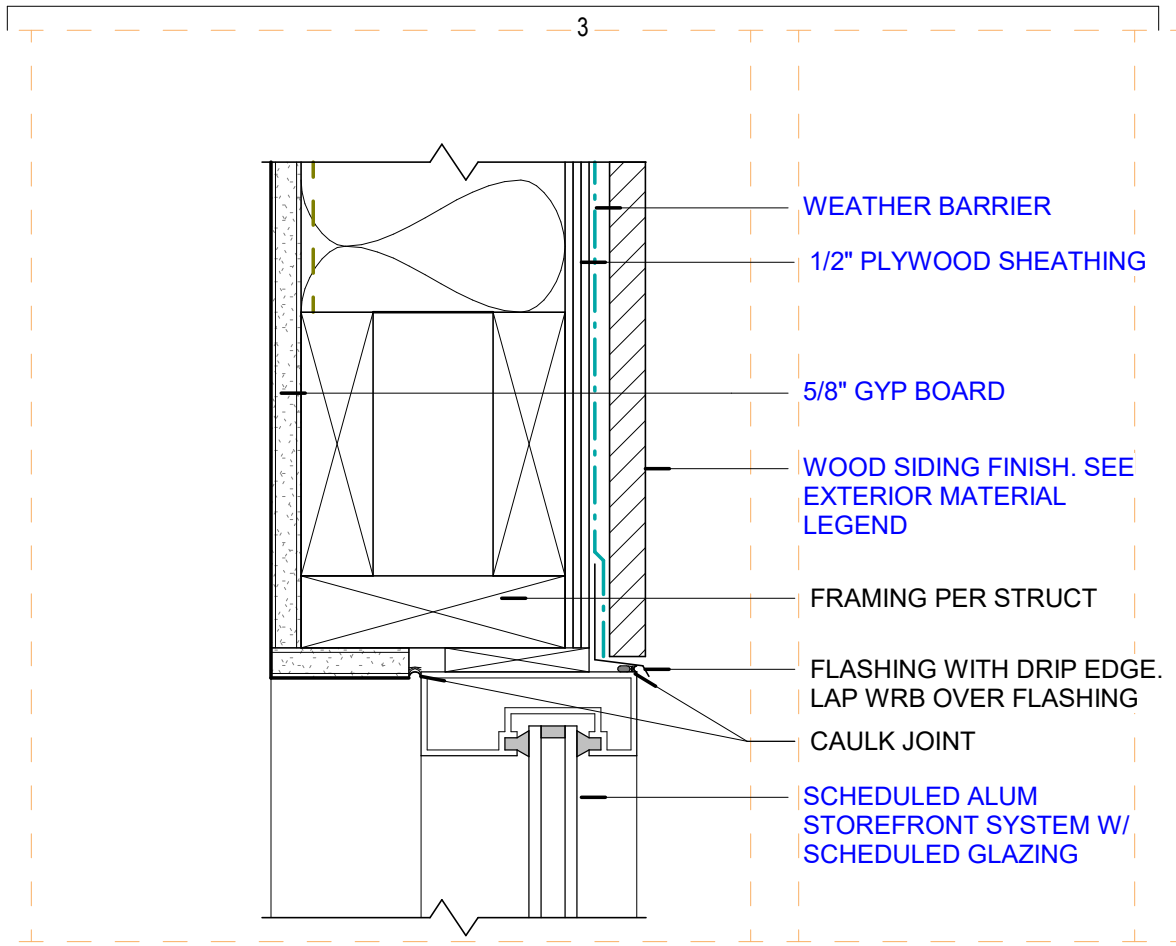
REV	DATE	DESCRIPTION
2	5/17	Addendum 1
4	Date 4	Addendum 3

ANNOTATED
 PLAN - LEVEL 01

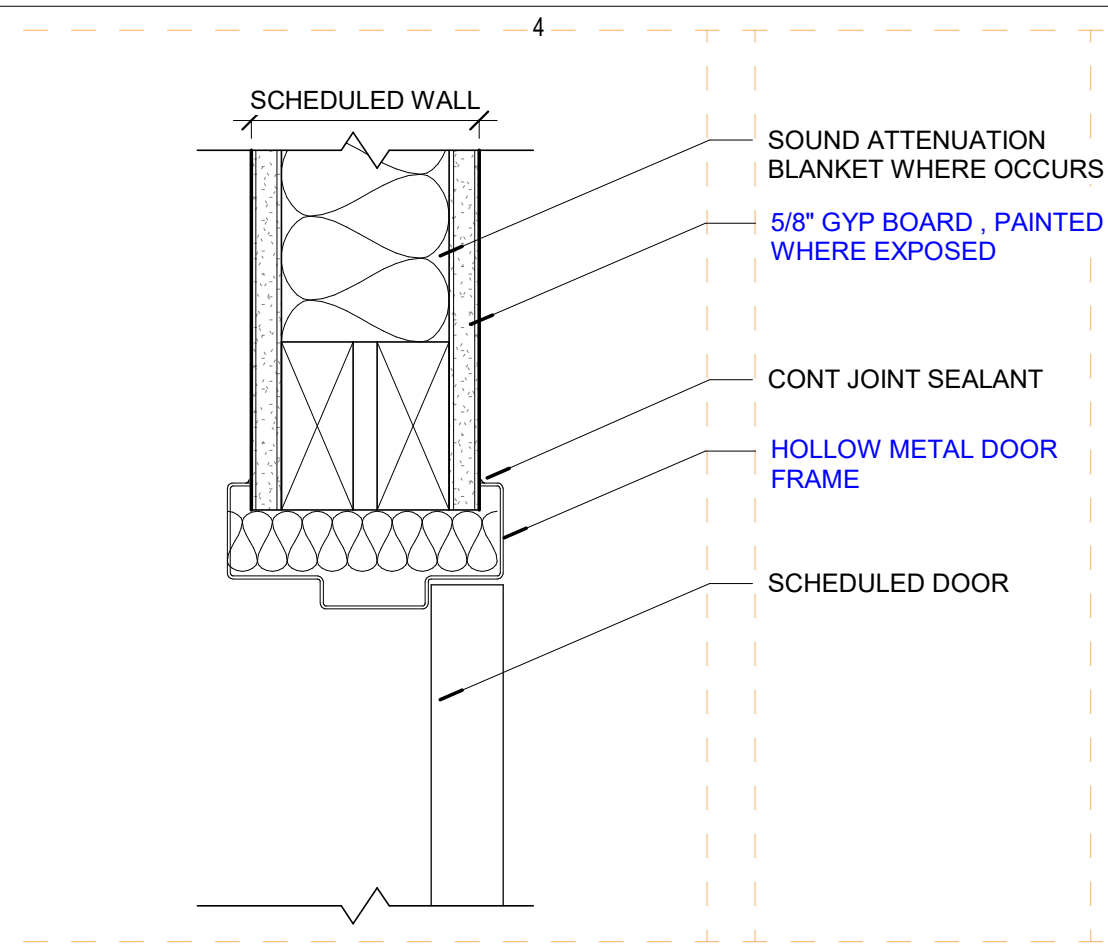
A110.1



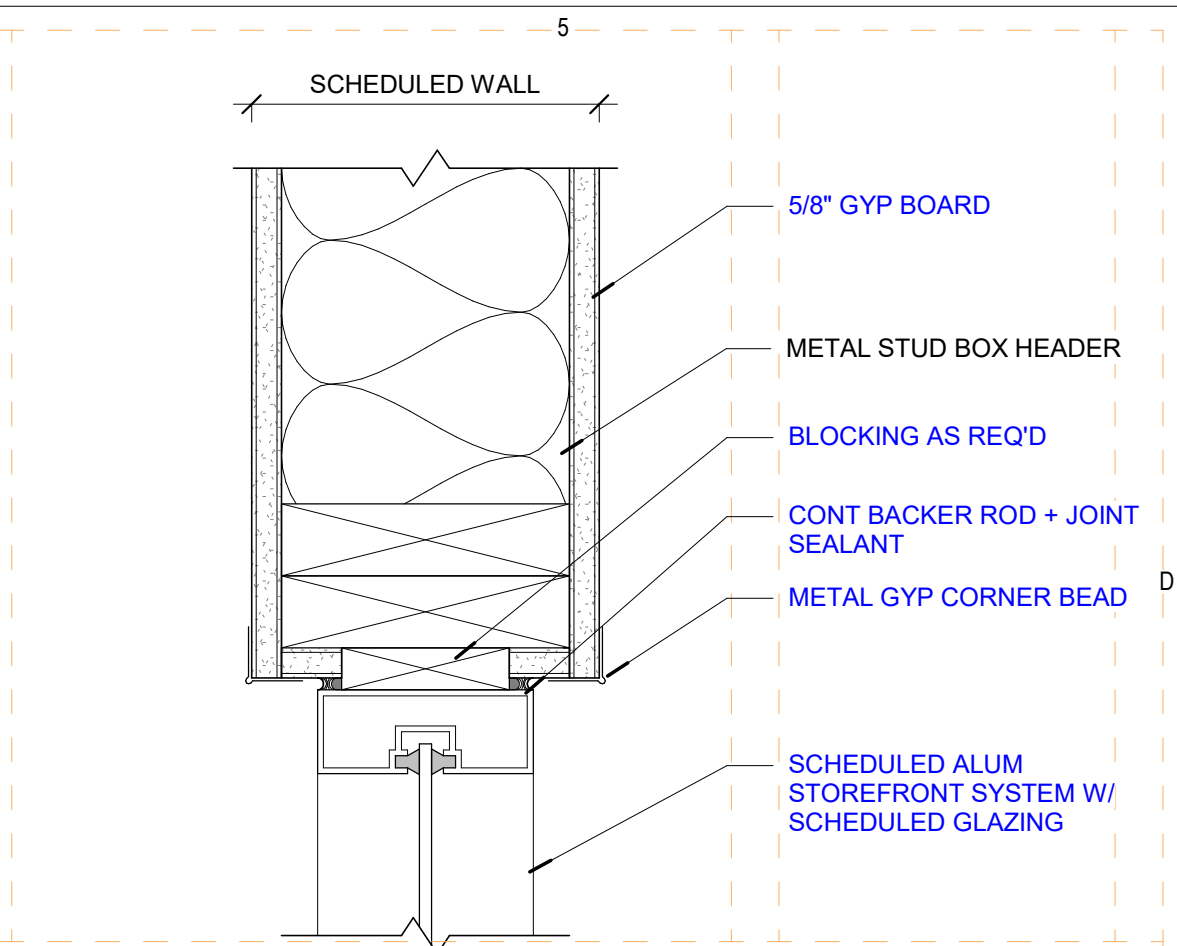
15 STOREFRONT - EXT - HEAD - STONE
3" = 1'-0"



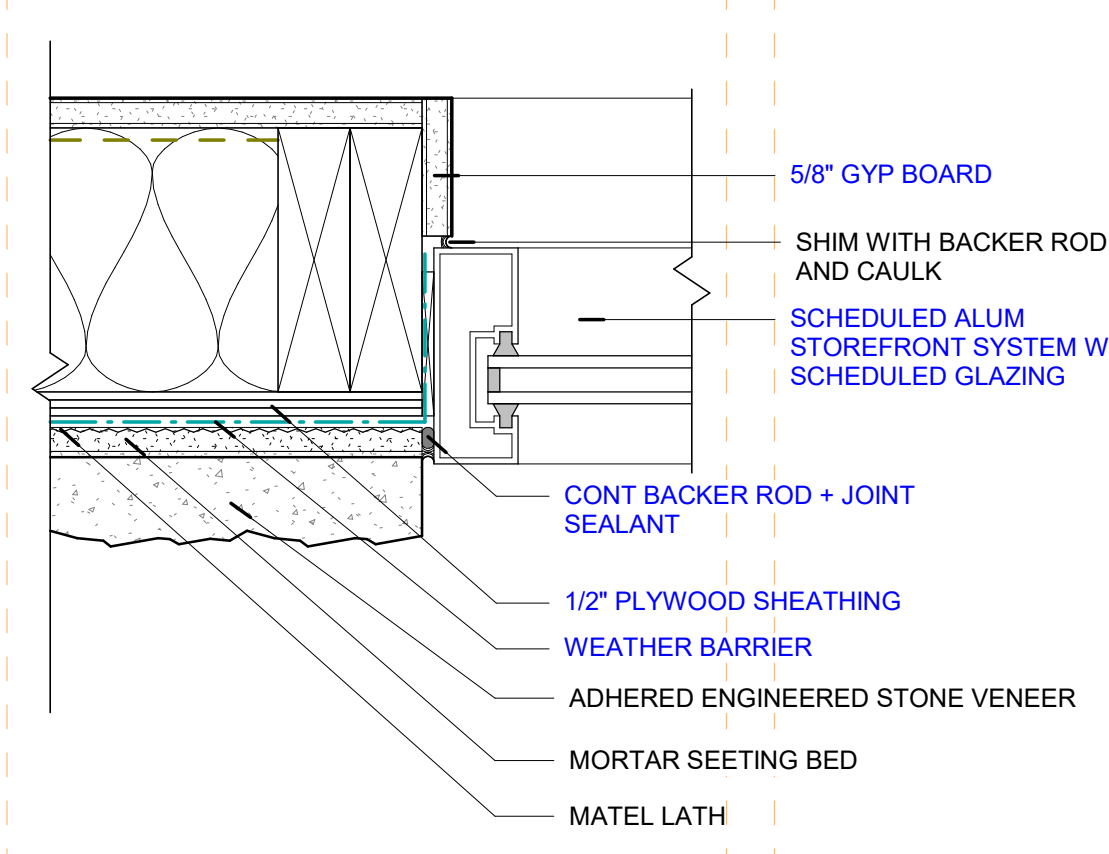
8 STOREFRONT - EXT - HEAD - ALUMINUM
3" = 1'-0"



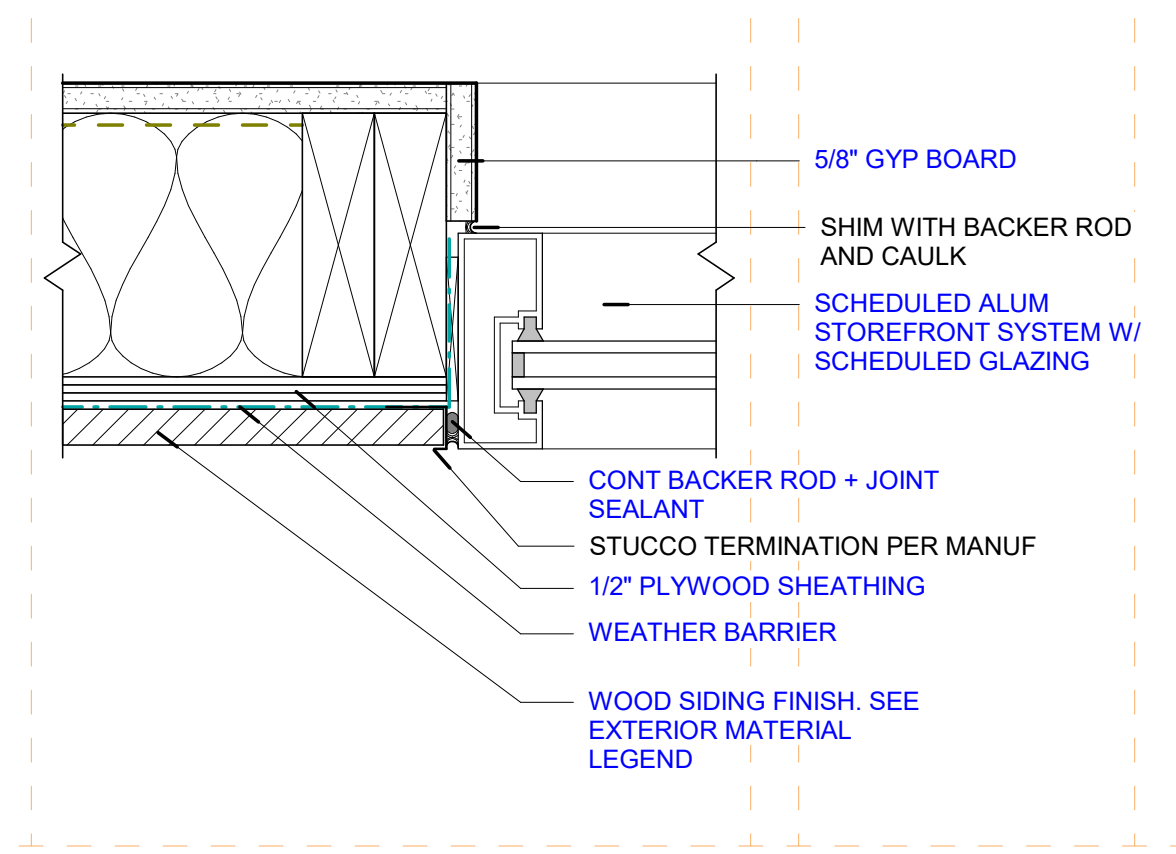
6 HM DOOR - HEAD
3" = 1'-0"



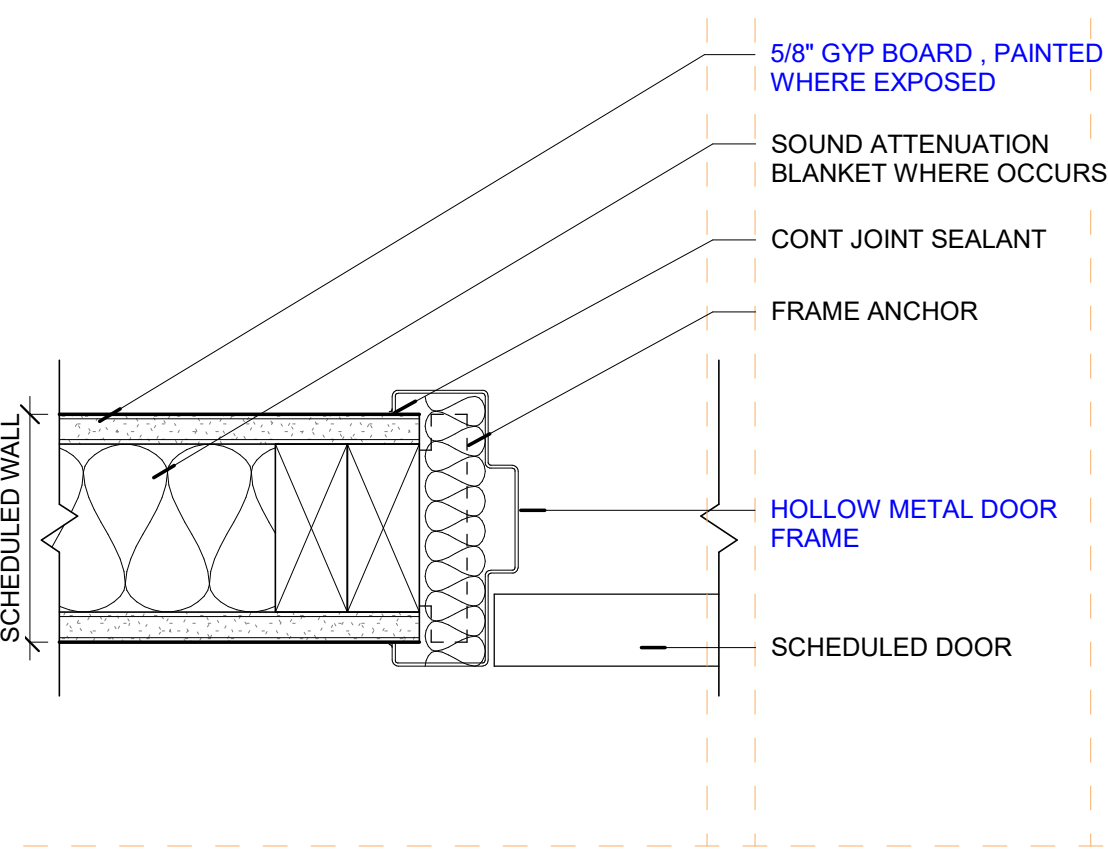
1 STOREFRONT - INT - HEAD
3" = 1'-0"



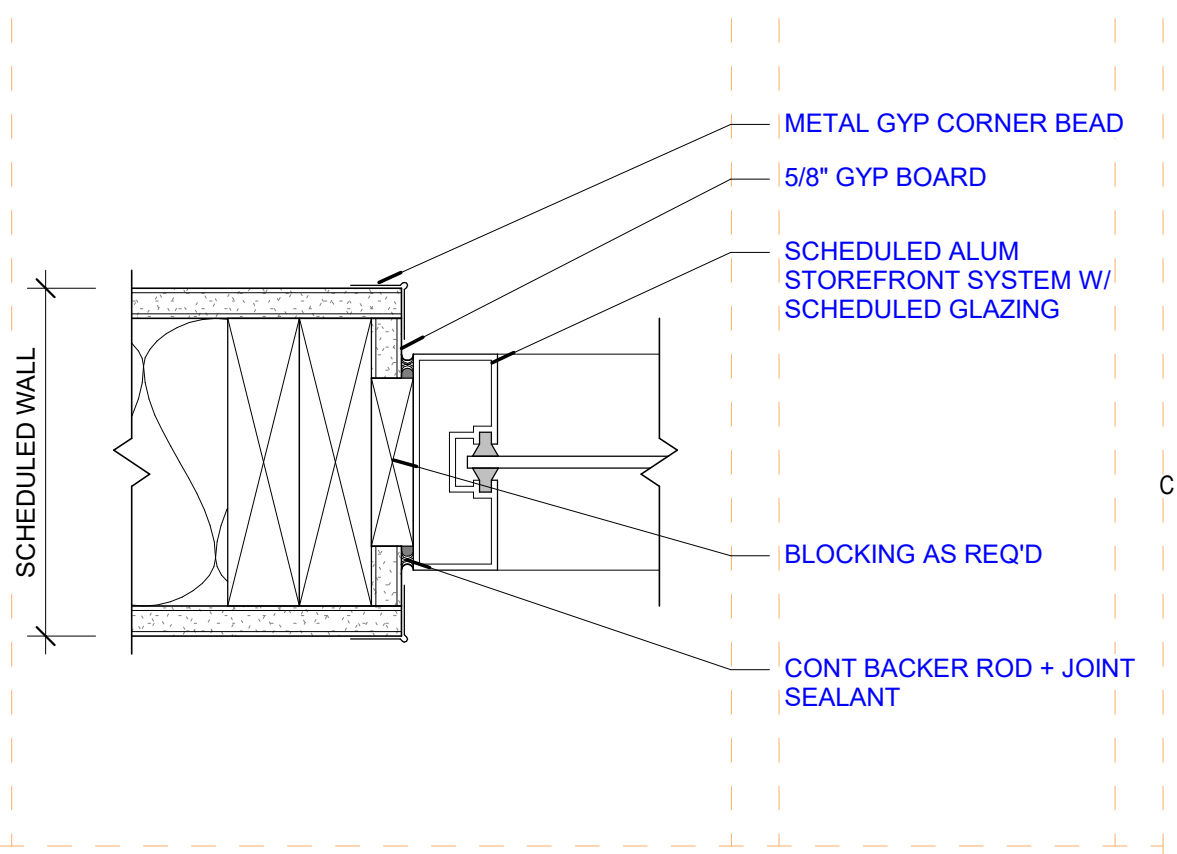
16 STOREFRONT - EXT - JAMB - STONE
3" = 1'-0"



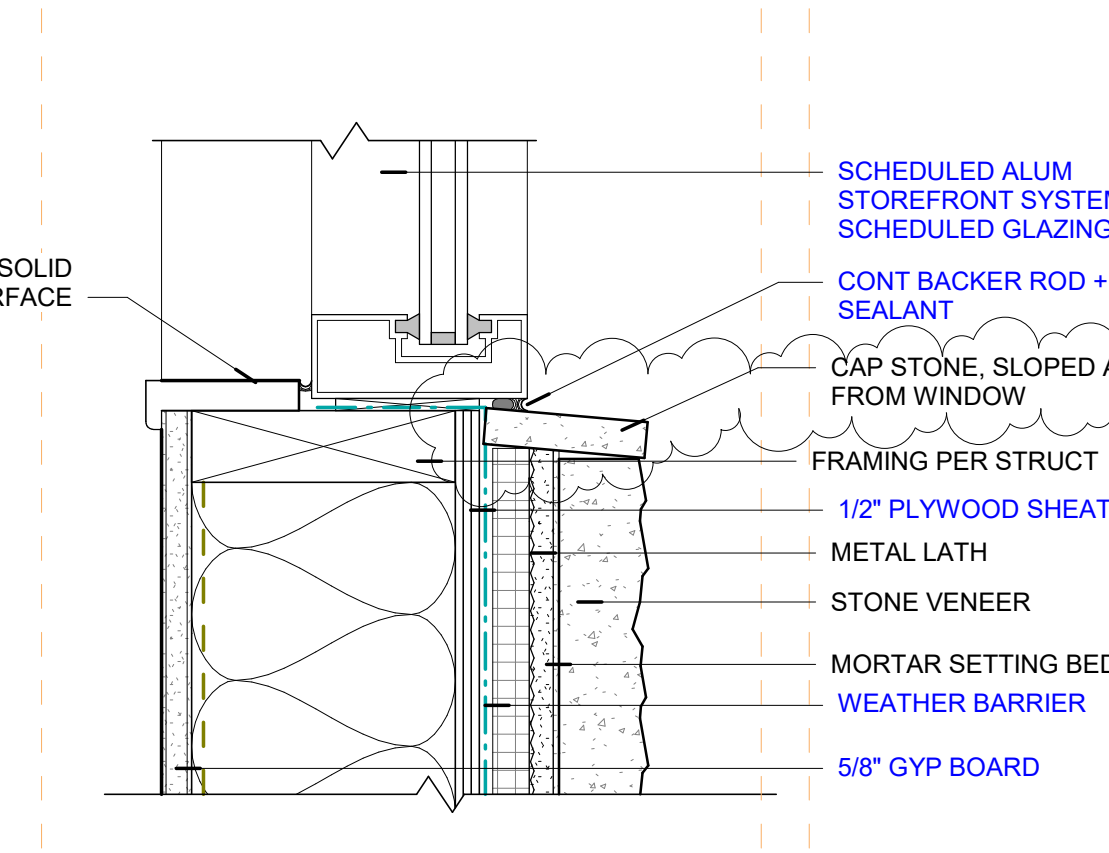
10 STOREFRONT - EXT - JAMB - ALUMINUM
3" = 1'-0"



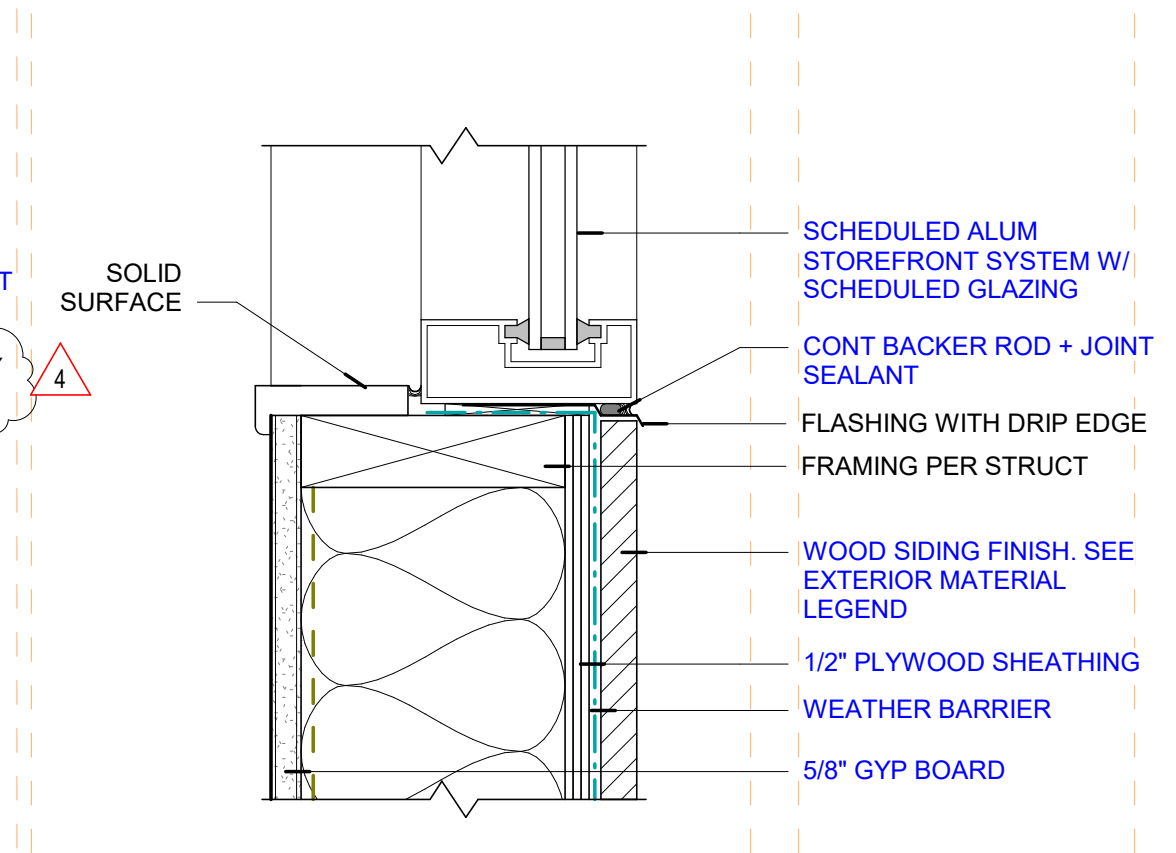
7 HM DOOR - JAMB
3" = 1'-0"



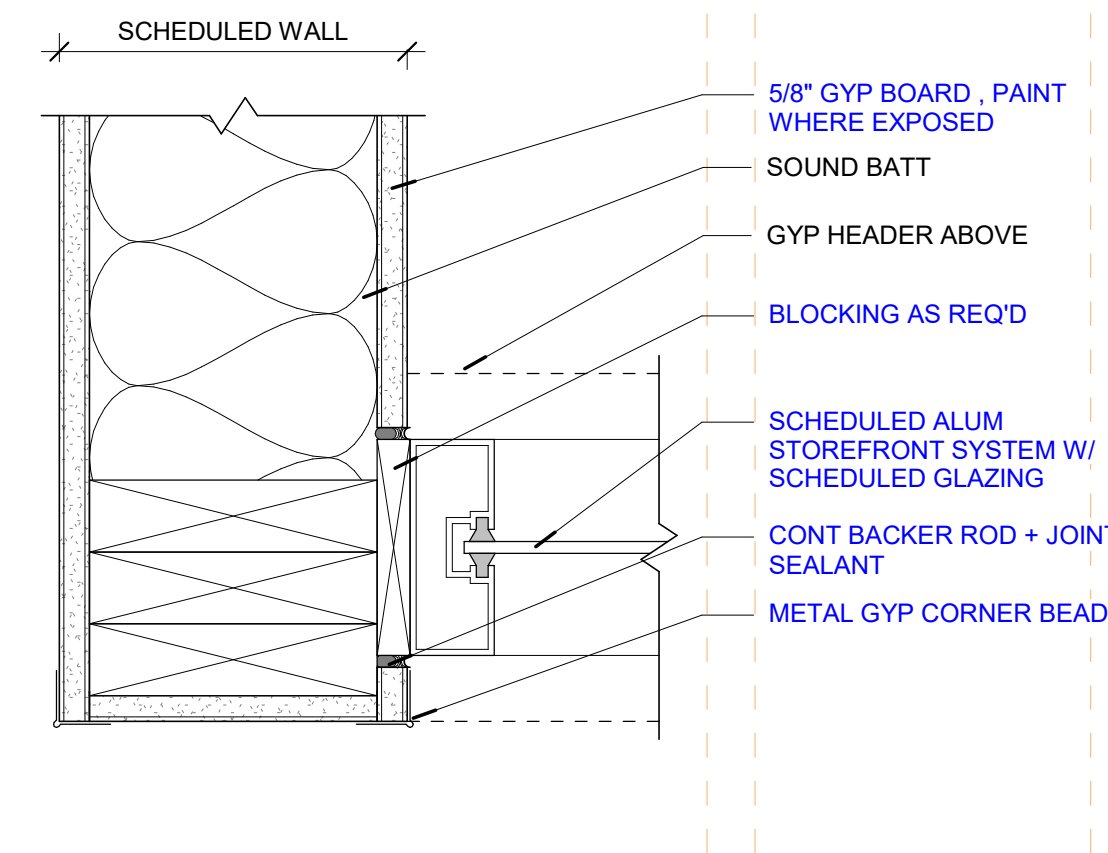
2 STOREFRONT - INT - JAMB
3" = 1'-0"



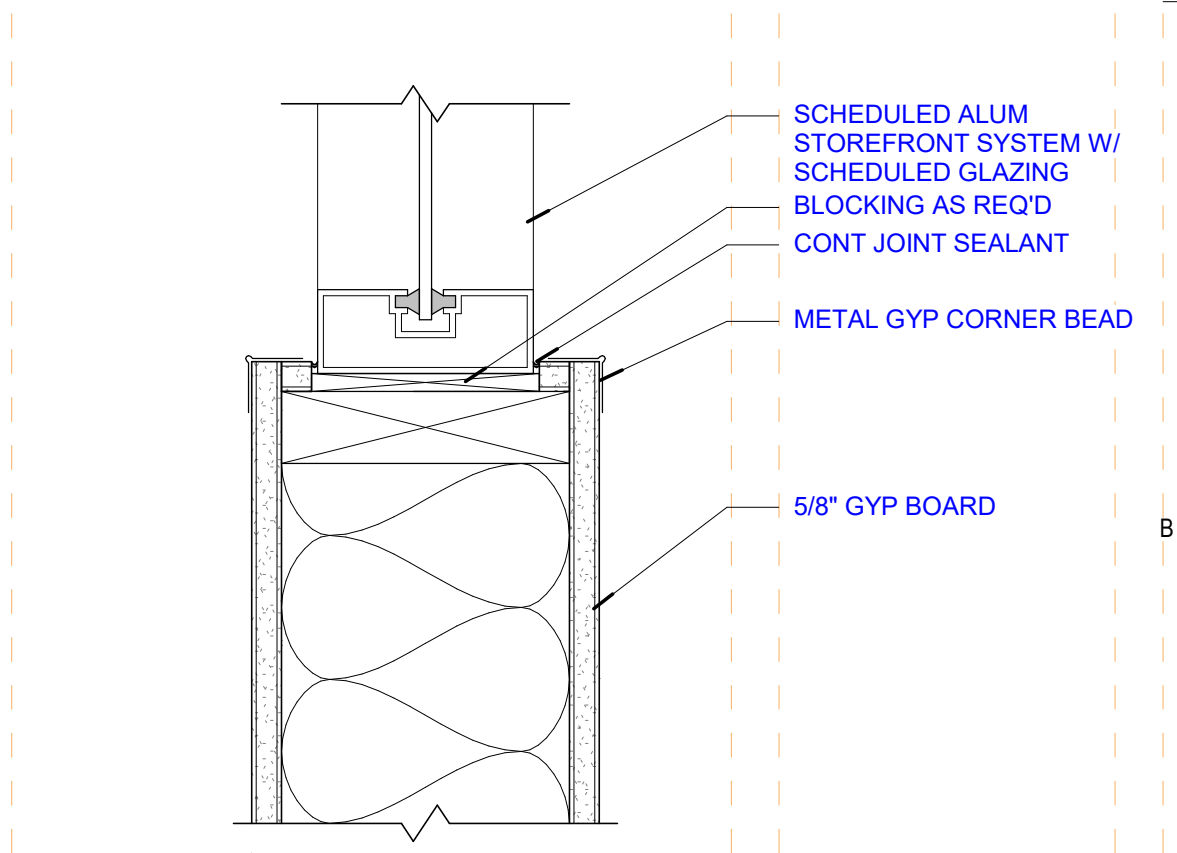
17 STOREFRONT - EXT - SILL - STONE
3" = 1'-0"



9 STOREFRONT - EXT - SILL - ALUMINUM
3" = 1'-0"



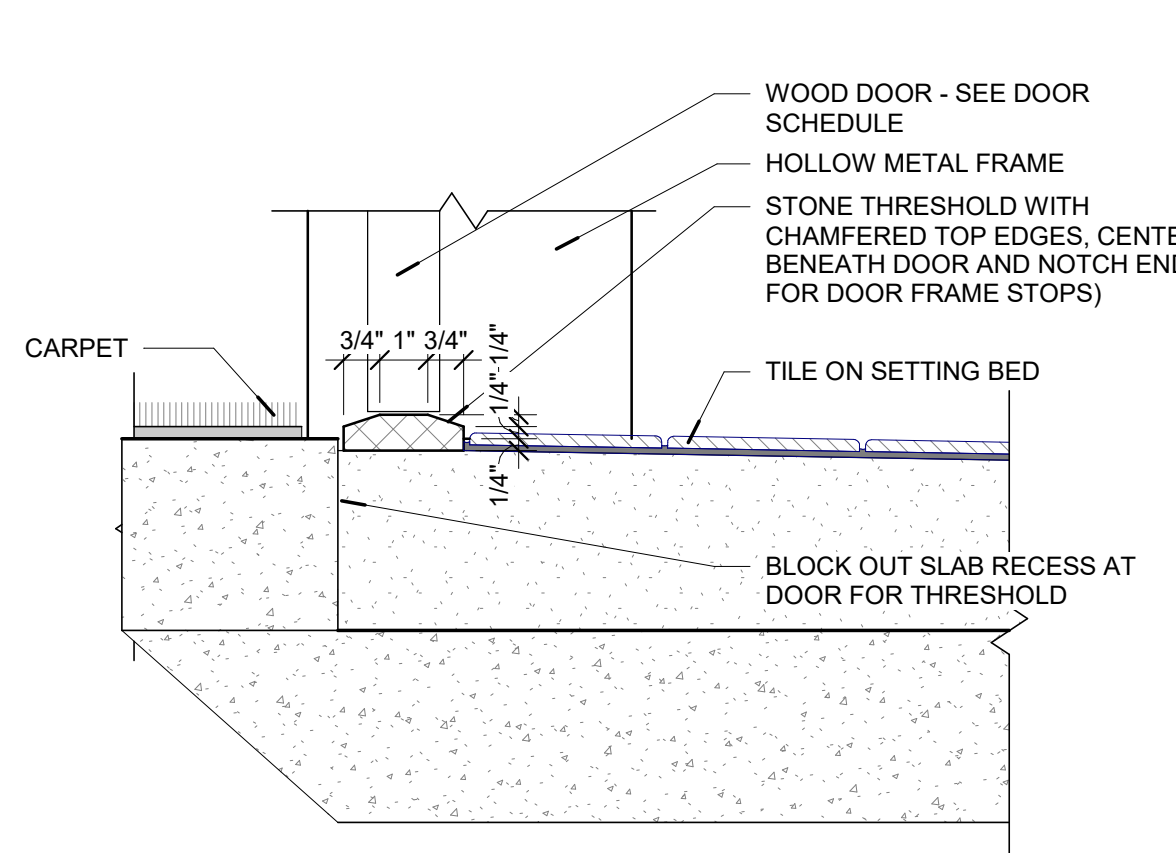
3 STOREFRONT - INT - JAMB - WALL TERMINATION
3" = 1'-0"



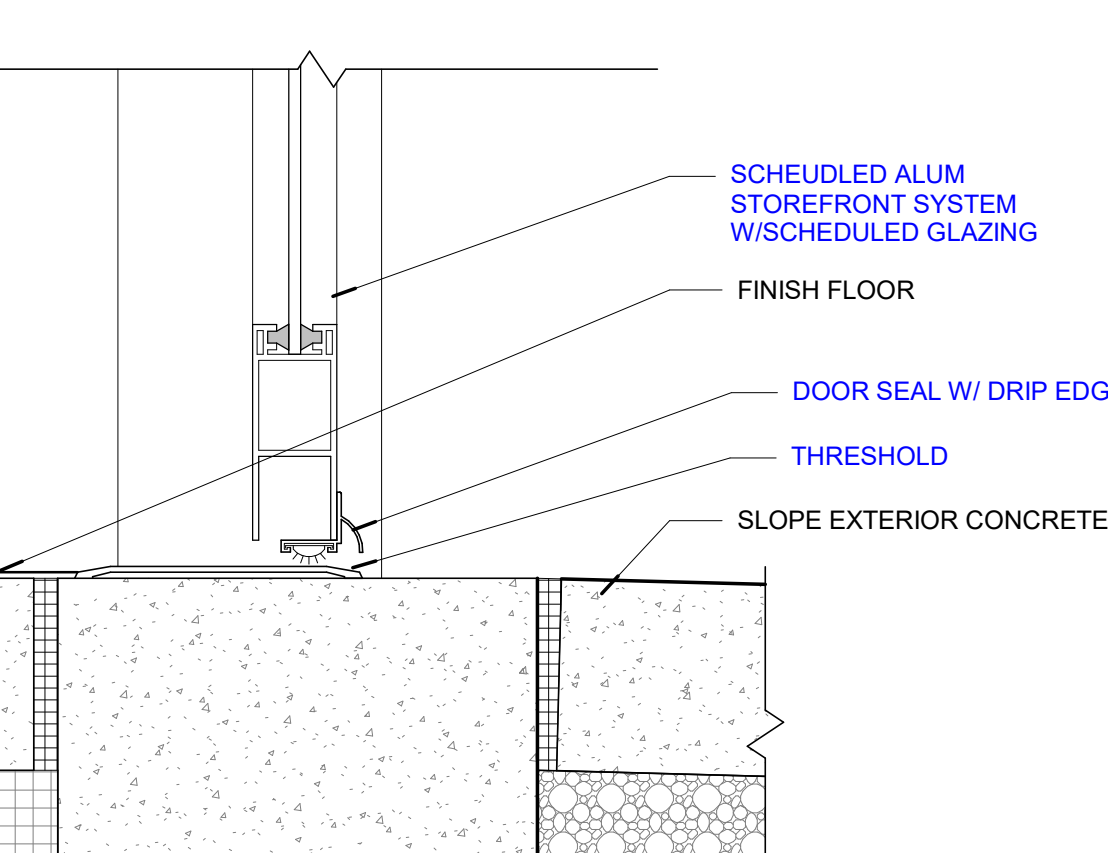
4 STOREFRONT - INT - SILL
3" = 1'-0"



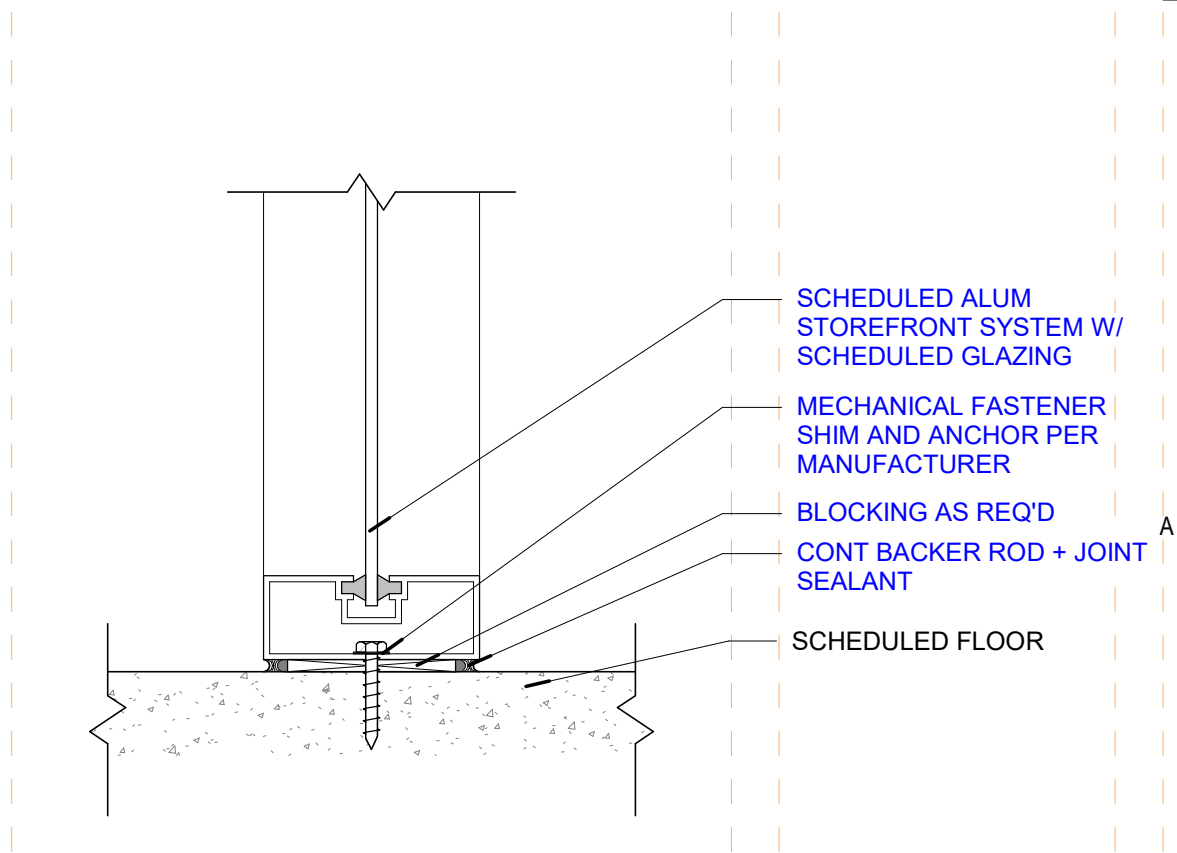
11 STONE THRESHOLD - CARPET TO TILE
3" = 1'-0"



14 STOREFRONT - EXT - THRESHOLD
3" = 1'-0"



14 STOREFRONT - EXT - THRESHOLD
3" = 1'-0"

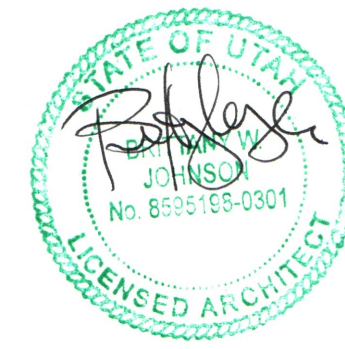


5 STOREFRONT - INT - SILL - SLAB
3" = 1'-0"



uncommon
architects

684 W. CENTER ST.
MIDVALE, UT 84047



THE CHURCH OF
JESUS CHRIST
OF LATTER-DAY SAINTS

WEST POINT SEMINARY

4342 W 920 SOUTH ST., WEST POINT, UTAH

BID SET

JOB NUMBER: 501-9425

OWNER: Latter-Day Saints

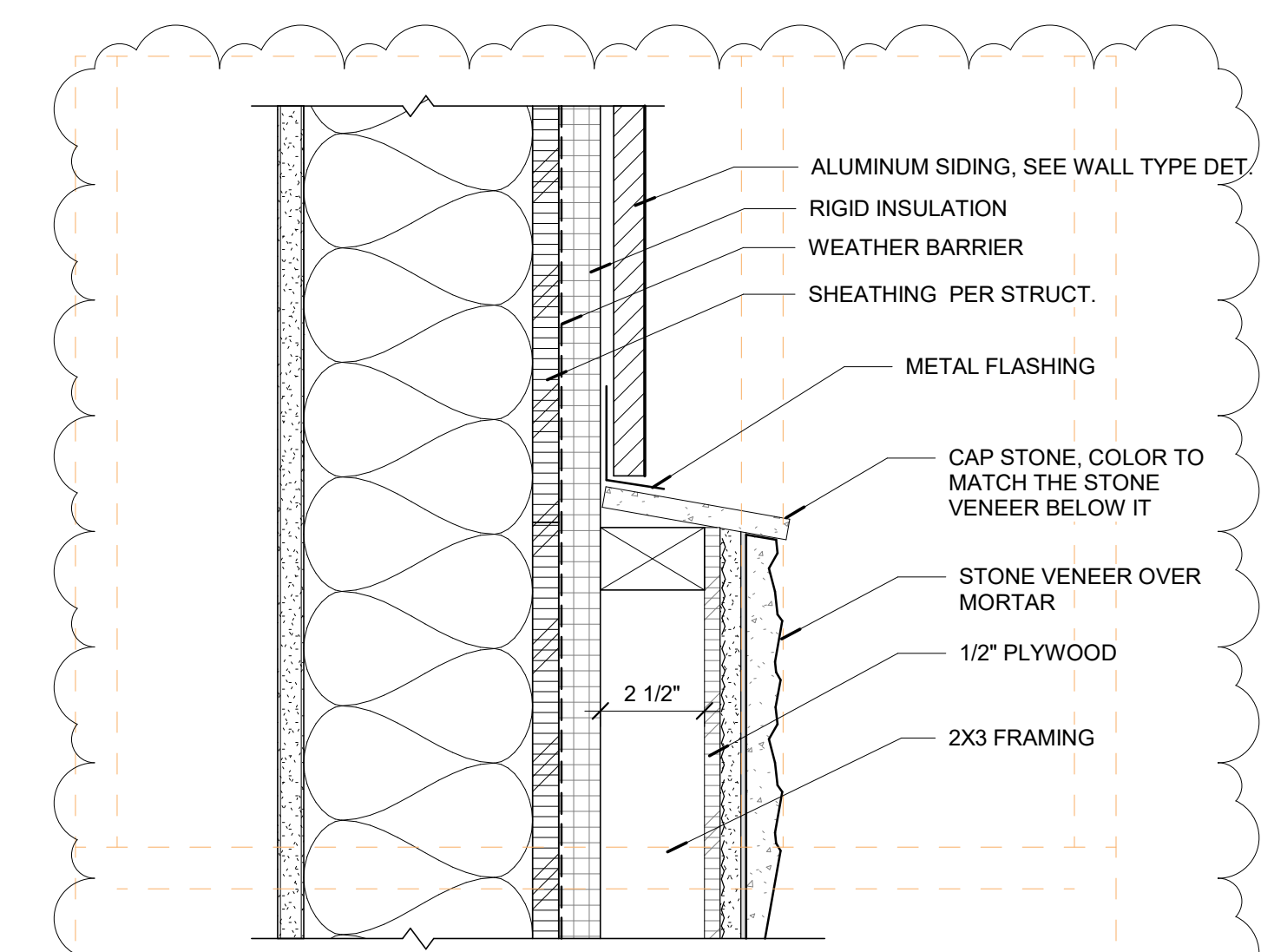
The Church of Jesus Christ of Latter-Day Saints

DATE: 05.08.2024

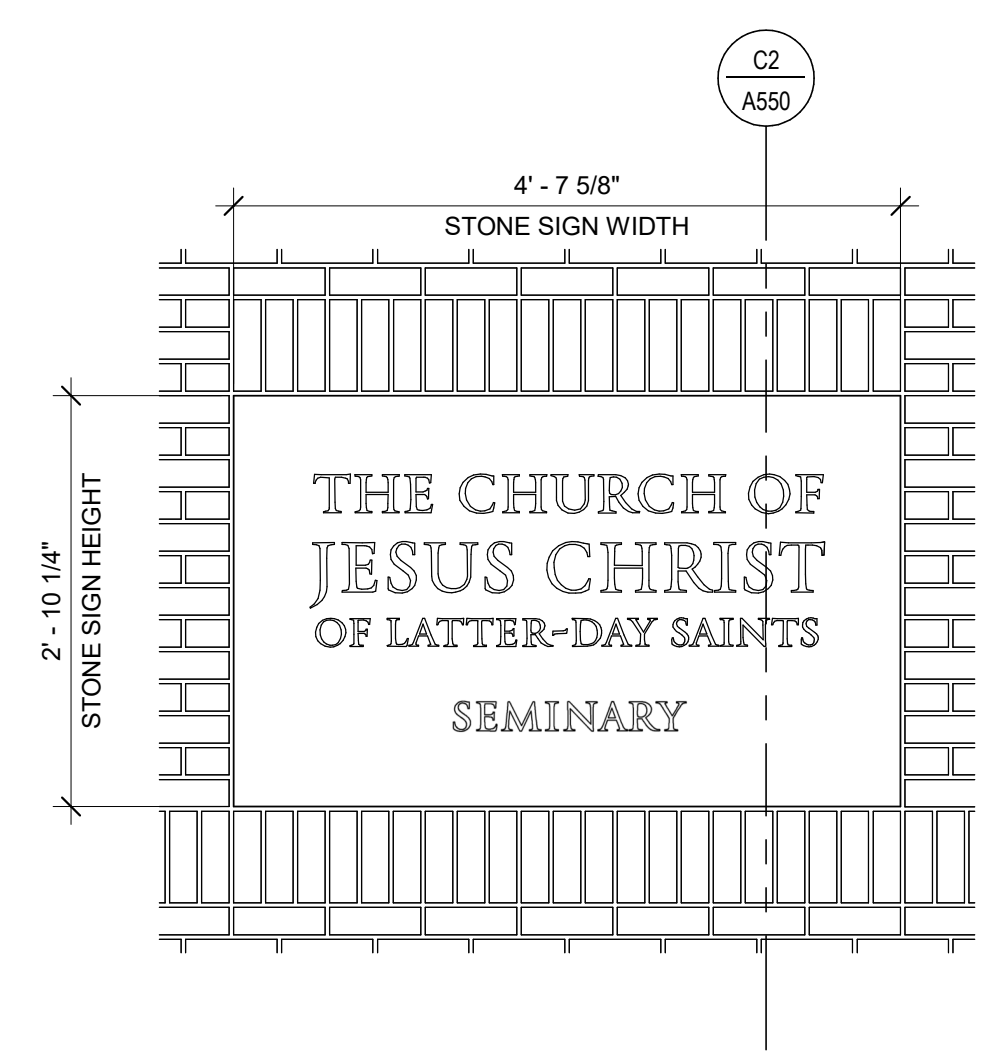
REV DATE DESCRIPTION
4 Date 4 Addendum 3

EXTERIOR
DETAIL

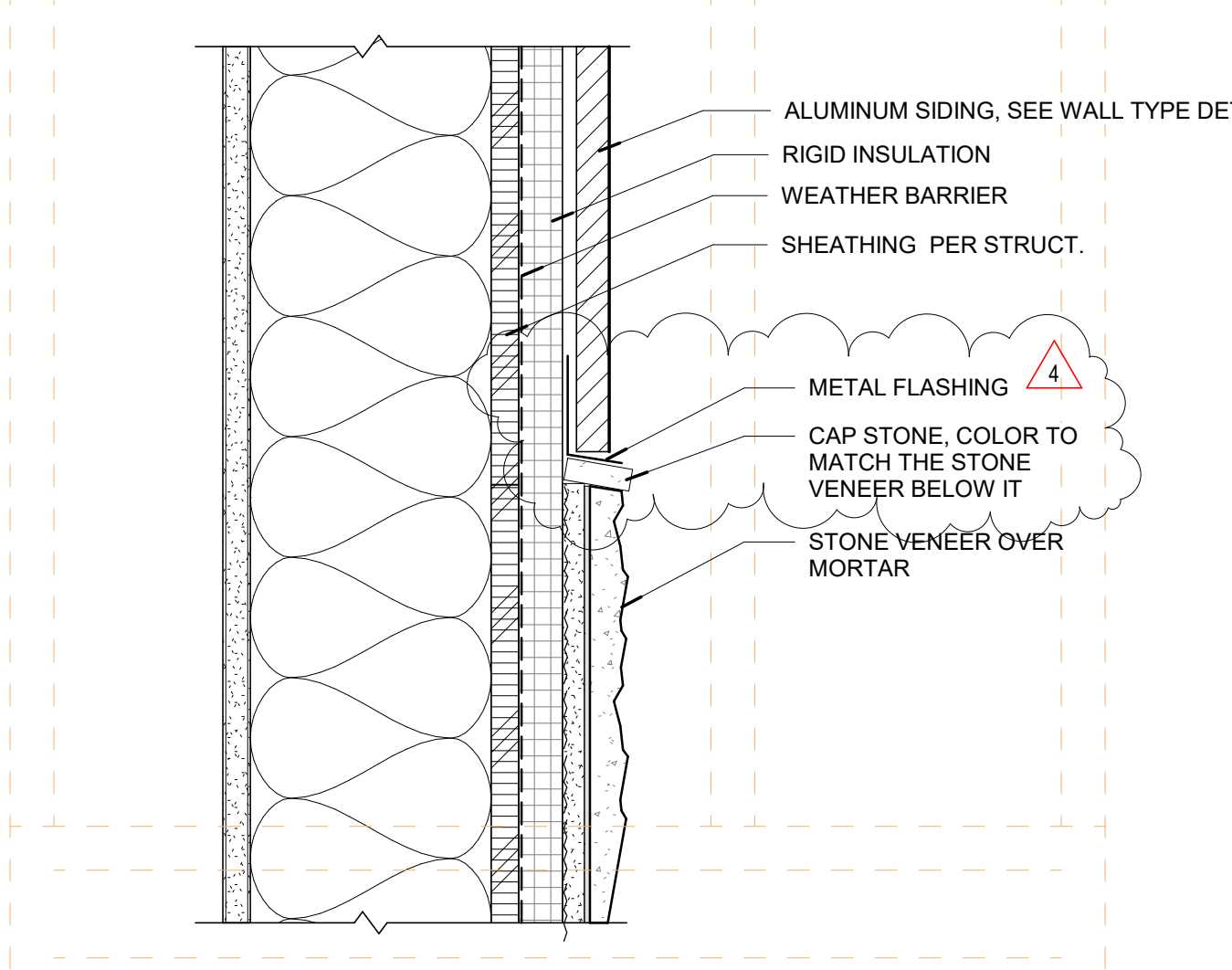
A550



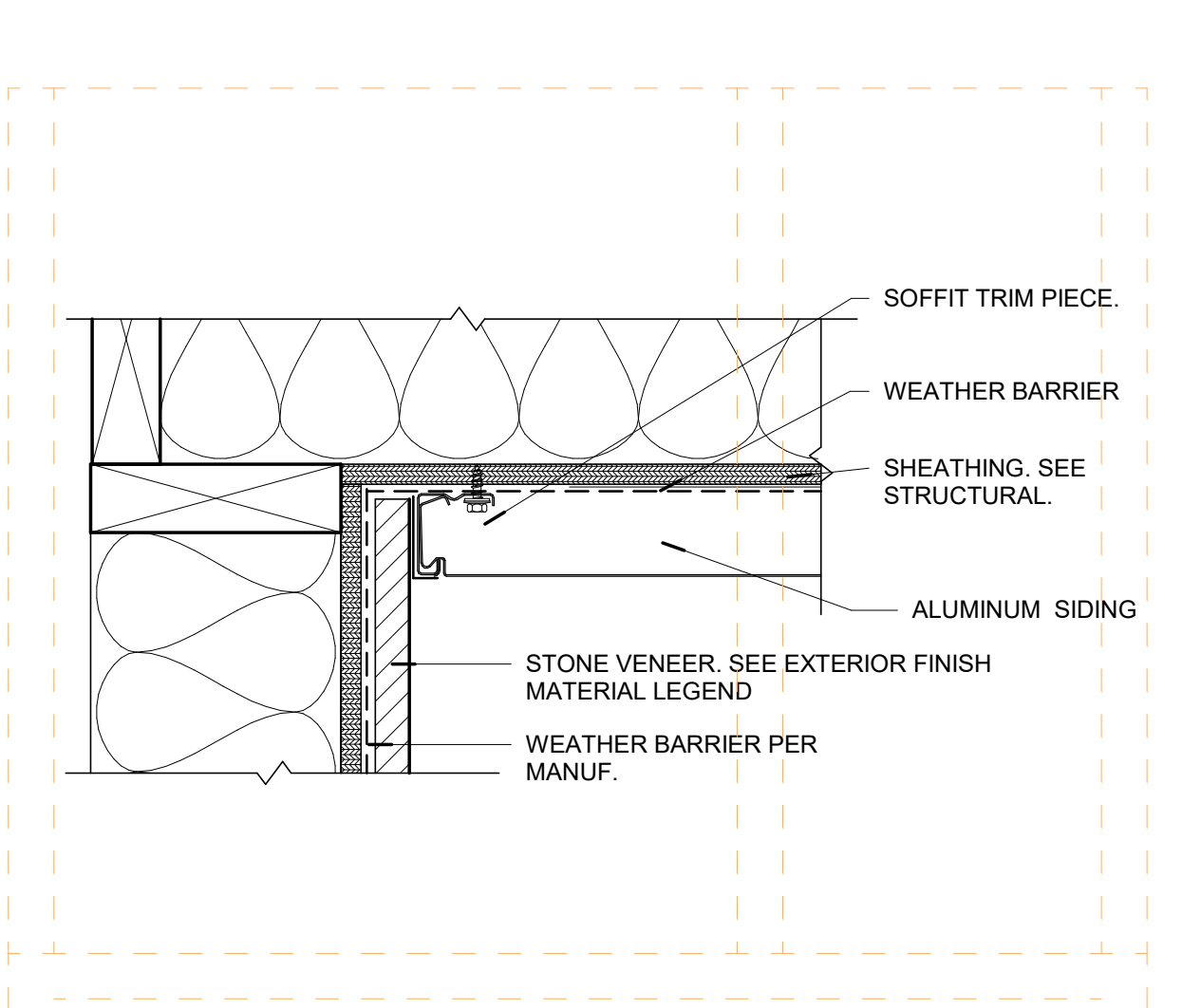
D1 ALUMINUM TO STONE TRANSITION - 2
3" = 1'-0"



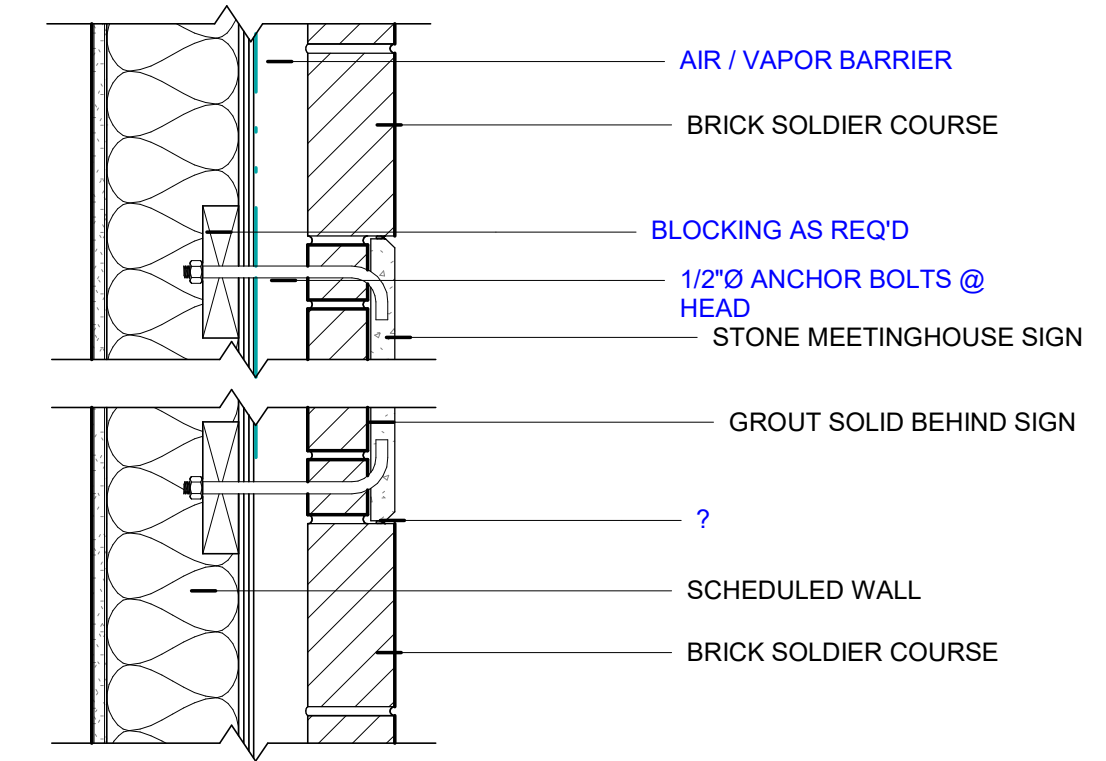
C2 SEMINARY - STONE SIGN
3/4" = 1'-0"



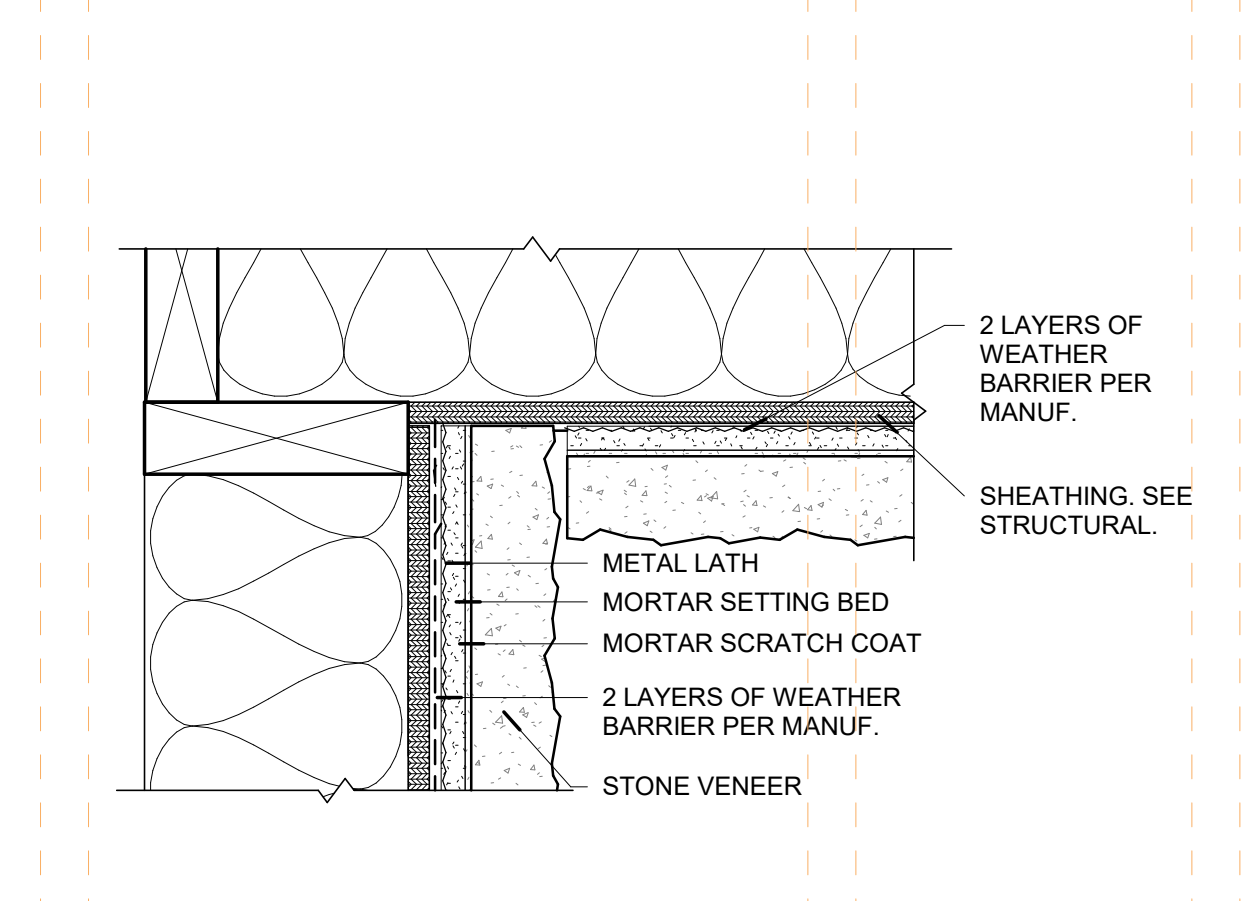
D4 ALUMINUM TO STONE TRANSITION
3" = 1'-0"



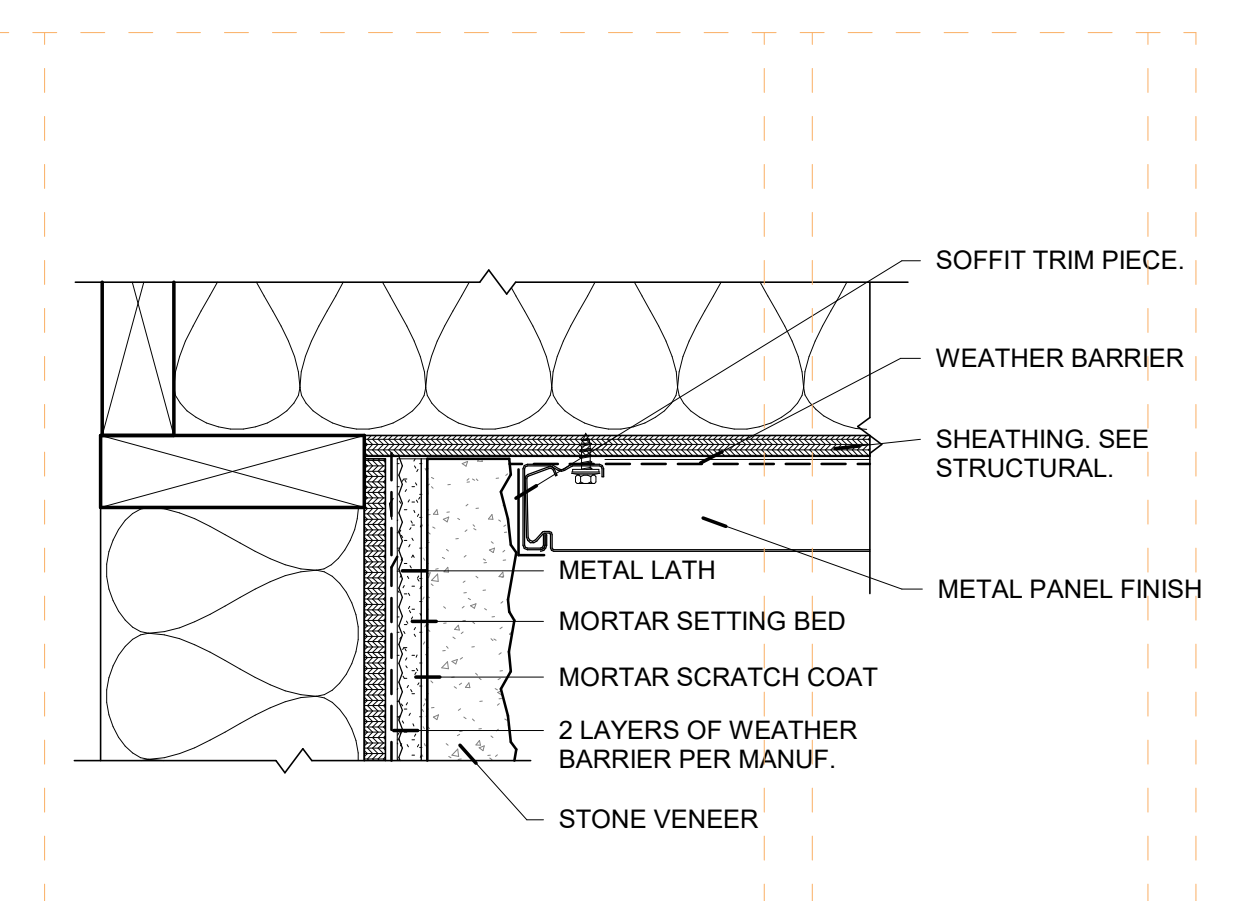
D5 STONE TO WOOD
3" = 1'-0"



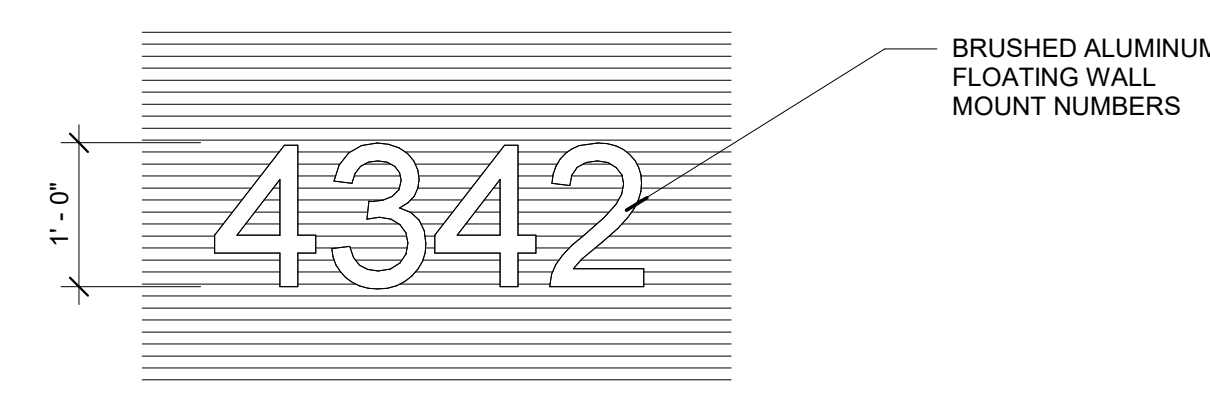
C2 SEMINARY - STONE SIGN SECTION
1 1/2" = 1'-0"



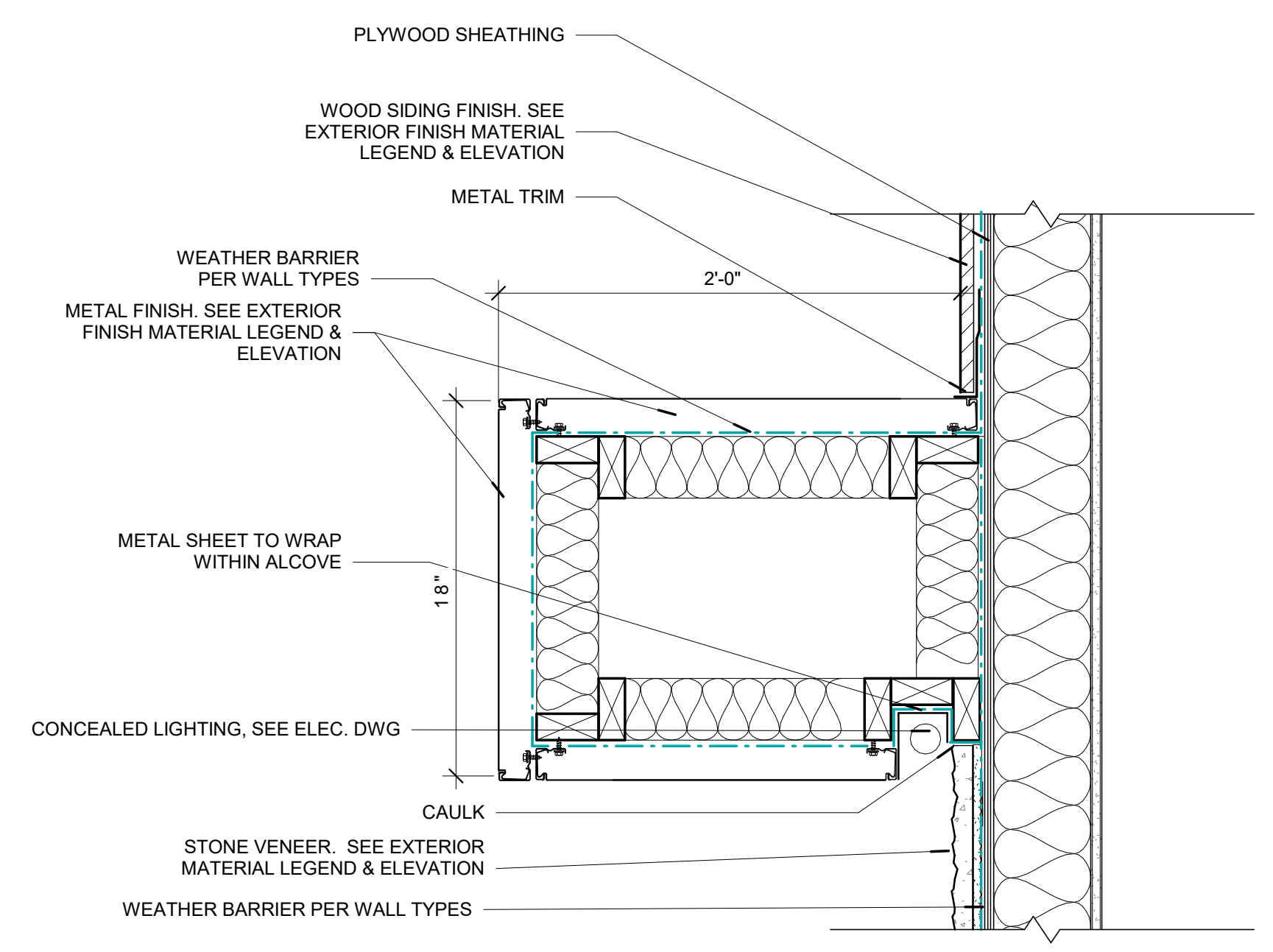
C4 STONE TO STONE
3" = 1'-0"



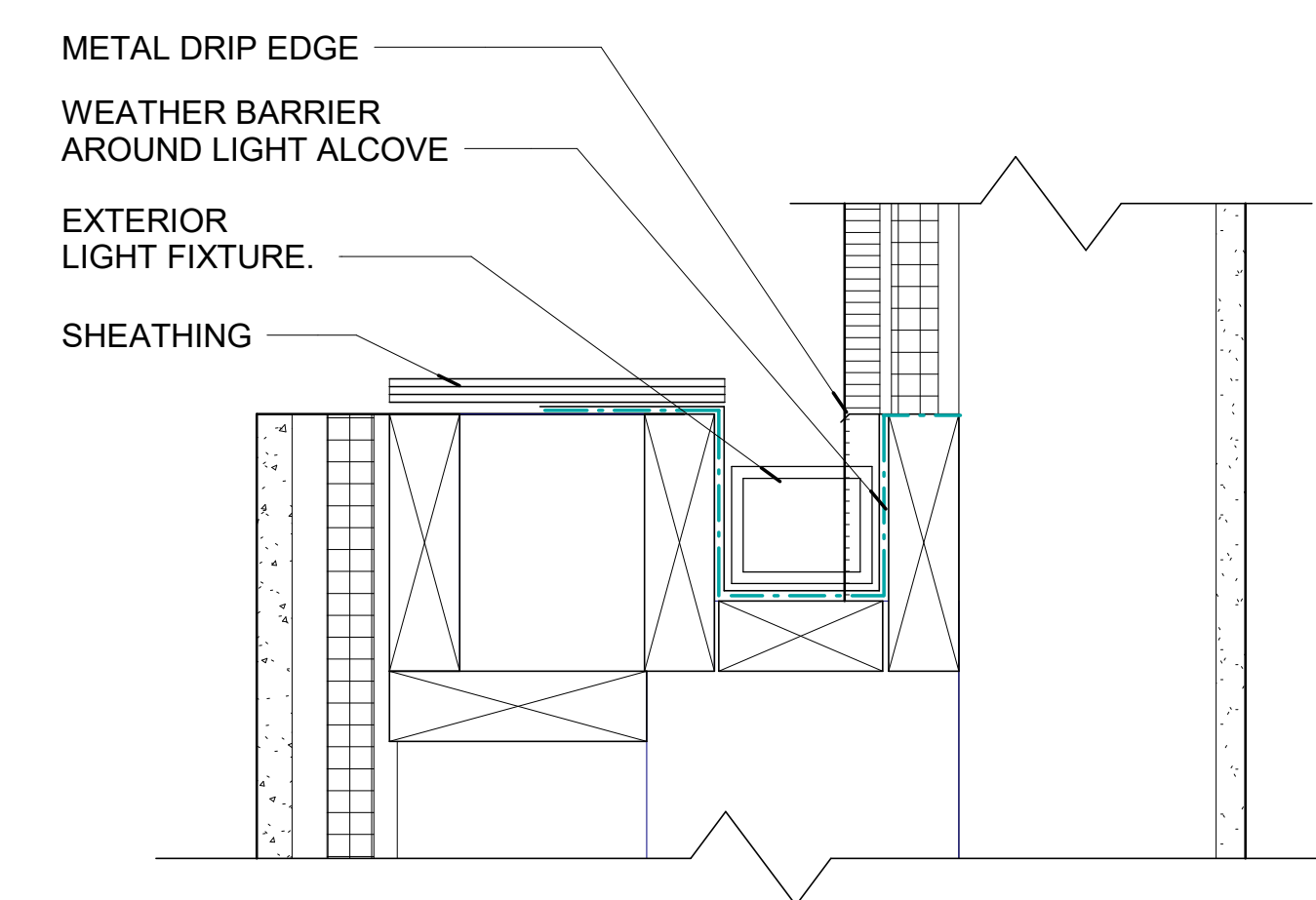
C5 STONE TO METAL
3" = 1'-0"



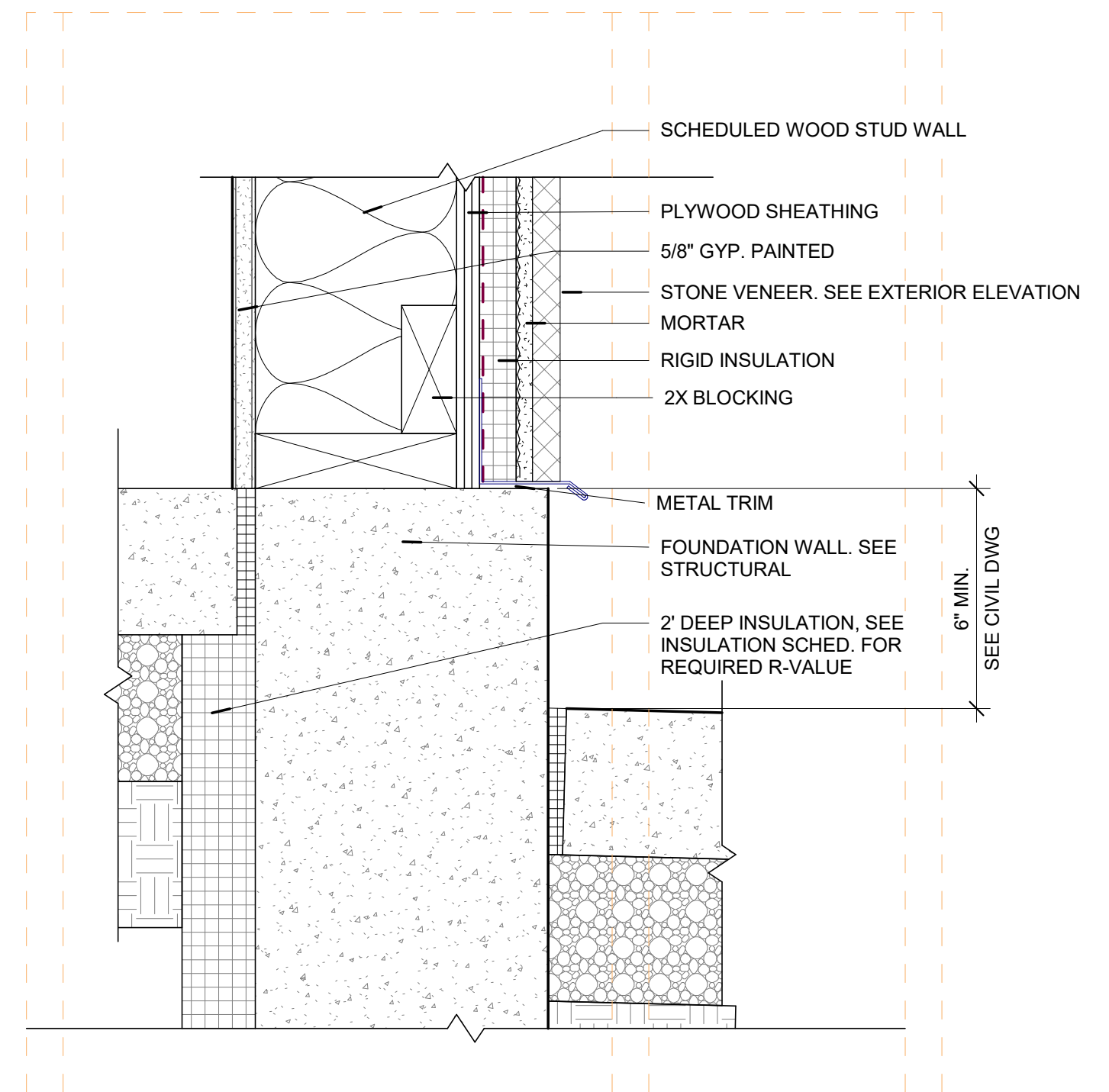
B4 ADDRESS SIGN
3/4" = 1'-0"



A2 WALL HANGOVER DETAILS
1 1/2" = 1'-0"



A4 LIGHT ALCOVE DETAIL
3" = 1'-0"



A1 FOUNDATION - STONE - TYP
3" = 1'-0"

5/24/2024 4:03:33 PM



uncommon
architects

684 W CENTER ST.
MIDVALE, UT 84047

uncommonarch.com
(801) 417-0951

THE CHURCH OF
JESUS CHRIST
OF LATTER-DAY SAINTS



SPECTRUM
ENGINEERS
324 S. State St., Suite 400
Salt Lake City, UT 84111
800-678-7077
801-328-5151
fax: 801-328-5155
www.spectrum-engineers.com

WEST POINT SEMINARY

4342 W 920 SOUTH ST., WEST POINT, UTAH

PLAN CHECK

JOB NUMBER: 501-9425
OWNER:

The Church of Jesus Christ of LDS

DATE: 02.15.2024

REV	DATE	DESCRIPTION
1	05.03.2024	CITY COMMENTS
3	05.24.2024	ADDENDUM #2

PLUMBING
CALCULATIONS

P002

TOTAL DOMESTIC WATER DEMAND

BASIS OF DESIGN:			REMARKS:			
CODE: 2021 IPC TOTAL PIPE SIZE: 1-1/4" TOTAL FLOW: 31 GPM (TABLE E103.3(3)) PIPE FRICTION: 6.5 PSI/100 FT. (FIGURE E103.3(5)) PIPE VELOCITY: 6.1 FPS (FIGURE E103.3(5))			(1) THE WATER SERVICE PIPE SHALL BE HORIZONTALLY SEPARATED FROM THE BUILDING SEWER PIPING BY A MINIMUM OF 5'-0" PER IPC 603.2. (2) AN APPROVED WATER PRESSURE-REDUCING VALVE CONFORMING TO ASSE 1003 OR CSA B356 WITH A STRAINER SHALL BE INSTALLED WHENEVER THE WATER PRESSURE WITHIN A BUILDING EXCEEDS 80 PSI STATIC.			
LABEL	DESCRIPTION	QUANTITY	OCCUPANCY	TYPE OF SUPPLY CONTROL	TOTAL WATER SUPPLY FIXTURE UNITS (WSFU)	SUMMED TOTAL WATER SUPPLY FIXTURE UNITS (WSFU)
DF	DRINKING FOUNTAIN	1	OFFICES, ETC.	3/8" VALVE	1	1
KS	KITCHEN SINK	1	PRIVATE	FAUCET	1.4	1.4
LAV	LAVATORY	3	PUBLIC	FAUCET	2	6
MOP	SERVICE SINK	1	OFFICES, ETC.	FAUCET	3	3
UR	URINAL	3	PUBLIC	3/4" FLUSHOMETER VALVE	5	15
WC-A	WATER CLOSET, FLUSHOMETER TANK, PUBLIC OR PRIVATE	3	PUBLIC	FLUSH TANK	2.2	6.6
TOTAL		12				33

SANITARY SEWER DEMAND

BASIS OF DESIGN:			REMARKS:		
CODE: 2021 IPC BUILDING DRAIN SIZE: 4" MIN. SLOPE: 1/8" PER FOOT MAX DFUs ON MAIN: 180 (TABLE 710.1(1))			(1) ANY PIPING 2-1/2" OR LESS IN SIZE SHALL HAVE A MINIMUM SLOPE OF 1/4" PER FOOT.		
LABEL	DESCRIPTION	QUANTITY	MINIMUM SIZE OF TRAP (INCHES)	DRAINAGE FIXTURE UNIT (DFU)	SUMMED DRAINAGE FIXTURE UNITS (DFU)
DF	DRINKING FOUNTAIN	1	1 1/2"	1	1
FD	FLOOR DRAINS	4	2"	2	8
KS	KITCHEN SINK	1	1 1/2"	2	2
LAV	LAVATORY	3	1 1/4"	1	3
MOP	SERVICE SINK	1	3"	2	2
UR	URINAL	3	INT.	4	12
WC-A	WATER CLOSET, FLUSHOMETER TANK, PUBLIC OR PRIVATE	3	INT.	3	9
TOTAL		16			37

NATURAL GAS DEMAND

BASIS OF DESIGN:			REMARKS:			
CODE: 2021 IFGC METHOD: LONGEST LENGTH INLET PRESSURE: 2 LB. INLET PIPE SIZE: 3/4" LONGEST LENGTH: 100 FT.			(1) GAS PRESSURE REGULATOR SHALL BE LOCATED 10'-0" AWAY FROM THE EQUIPMENT.			
LABEL	DESCRIPTION	QUANTITY	MAXIMUM GAS CAPACITY (BTU)	EQUIPMENT GAS CAPACITY (CFH)	SUMMED EQUIPMENT GAS CAPACITY (CFH)	PIPE SIZE
						2 LB. @ XXX FT. 4 OZ. @ 10 FT.
RTU-1	8.5 TON ROOFTOP UNIT	1	165,480	186	186	1/2" 3/4"
RTU-2	7.5 TON ROOFTOP UNIT	1	165,480	186	186	1/2" 3/4"
RTU-3	6 TON ROOFTOP UNIT	1	124,110	139	139	1/2" 1/2"
TOTAL		3			511	

STORM DRAIN CALCULATIONS

ROOF ID LEGEND			REMARKS:				
			(1) RAINFALL RATE = 1.3 IN/HR (2) TOTAL AREA = ROOF AREA + (1/2 * PARAPET AREA) PER 2021 IPC 1106.4. (3) SLOPE = 1/8" PER FOOT (4) MAXIMUM AMOUNT OF GPM ALLOWED ON 3" PIPE = 55 GPM PER 2021 IPC 1106.2.				
ROOF ID	ROOF	AREA [FT ²]	TOTAL	GPM	PIPE SIZE [INCH]		REMARKS
CANOPY NORTH	447	75	485	6.55	2	2	ALL
CANOPY SOUTH LEFT	490	132	556	7.51	2	2	ALL
CANOPY SOUTH RIGHT	45	0	45	0.61	2	2	ALL
ROOF 1	181	311	337	4.55	2	2	ALL
ROOF 2	267	270	402	5.43	2	2	ALL
ROOF 3	419	436	637	8.60	2	2	ALL
ROOF 4	1263	0	1263	17.06	2	2	ALL
TOTAL		--	3725	50.31	3	3	ALL