



ARCHITECT'S SUPPLEMENTAL INSTRUCTIONS 001

project	Intermountain Alta View Fountain Design	project no	21010.00
date	2021-09-20	no. pages	4
owner	Intermountain Medical Group Support		
contractor	Saunders Construction Inc.		
reference	ASI 001 - Waterproofing / Concrete / Electrical Revisions		

attention	Mark Richins Ed Saunders JoanEllen Creamer Michael Rail	firm(s)	Intermountain Medical Group Support Saunders Construction Inc. VCBO Architecture, LLC VCBO Architecture, LLC
------------------	--	----------------	---

The work shall be carried out in accordance with the following supplemental instructions issued in accordance with the Contract Documents without change in the Contract Sum or Contract Time. Proceeding with the Work in accordance with these instructions indicates your acknowledgement that there will be no change in the Contract Sum or Contract Time.

1.1

A110 - ENLARGED PLAN + ELEVATIONS

- DETAIL A4 - Revise dimensions as clouded. Add dimensions to locate center of radiused dimensions.
- DETAIL A4 - Clarified fountain wall adjacent to the Women's Center.
- DETAIL B2 - Revised drawing to show waterproofing.
- DETAIL B2 - Clarified fountain wall adjacent to the Women's Center.
- DETAIL C4 - Revised wall thickness as clouded.
- DETAIL C4 - Revised drawing to show waterproofing.
- DETAIL C4 - Revised drawing to show waterstop.
- DETAIL C4 - Revised drawing to show revised grate/gravel note.
- DETAIL D2 - Revised drawing to show waterstop.
- DETAIL D2 - Revised wall thickness as clouded.
- DETAIL D2 - Revised drawing to show waterproofing.

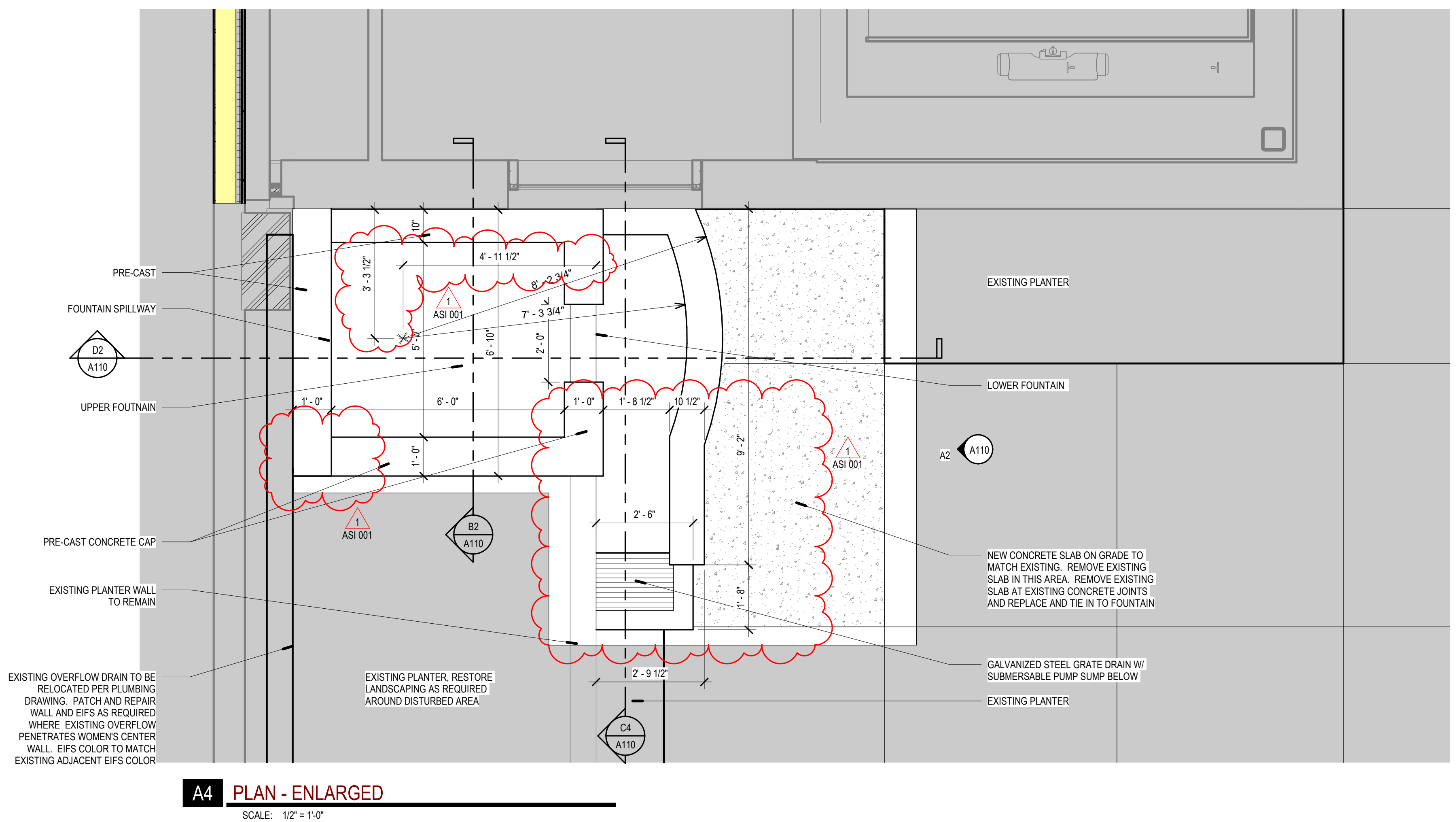
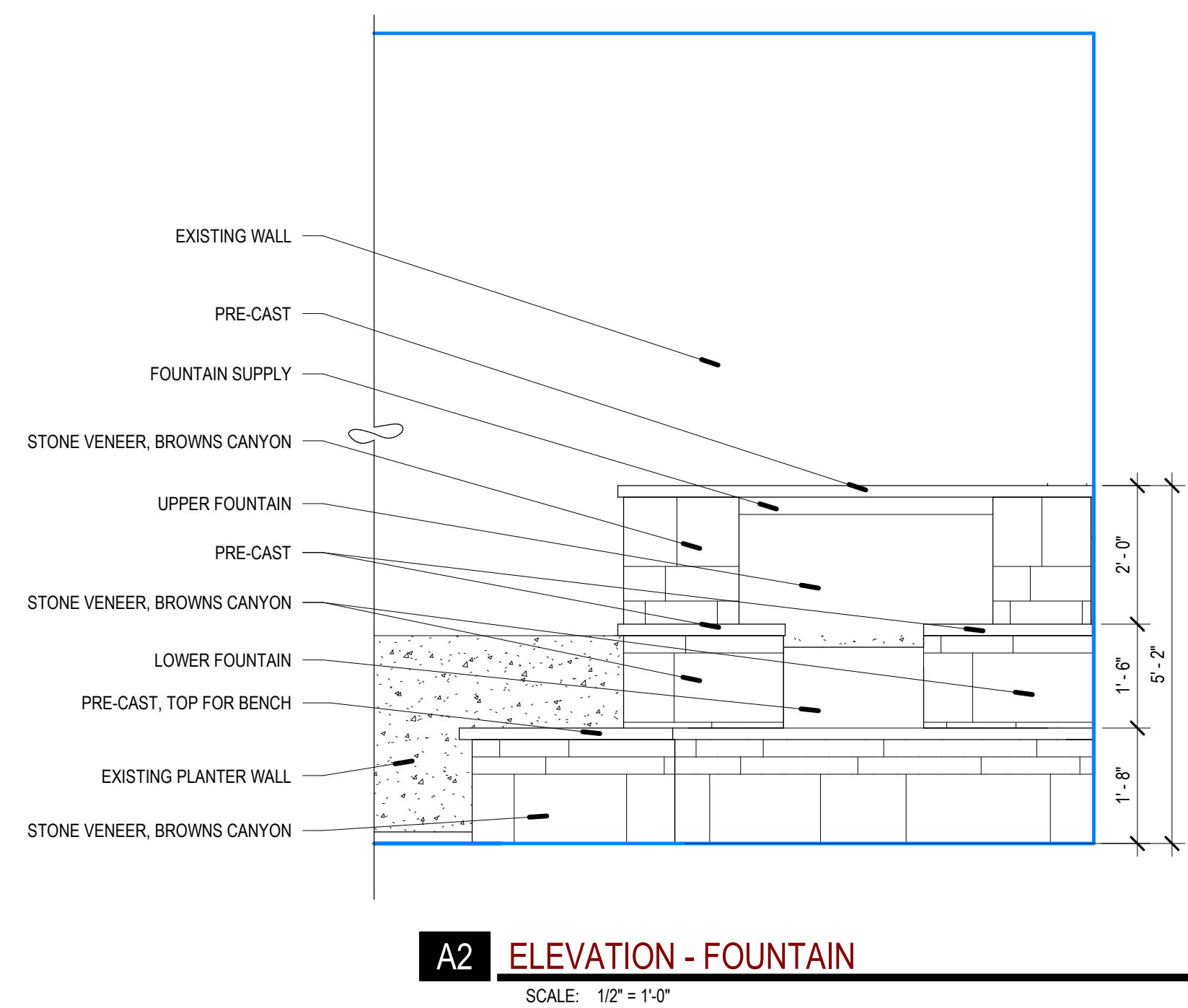
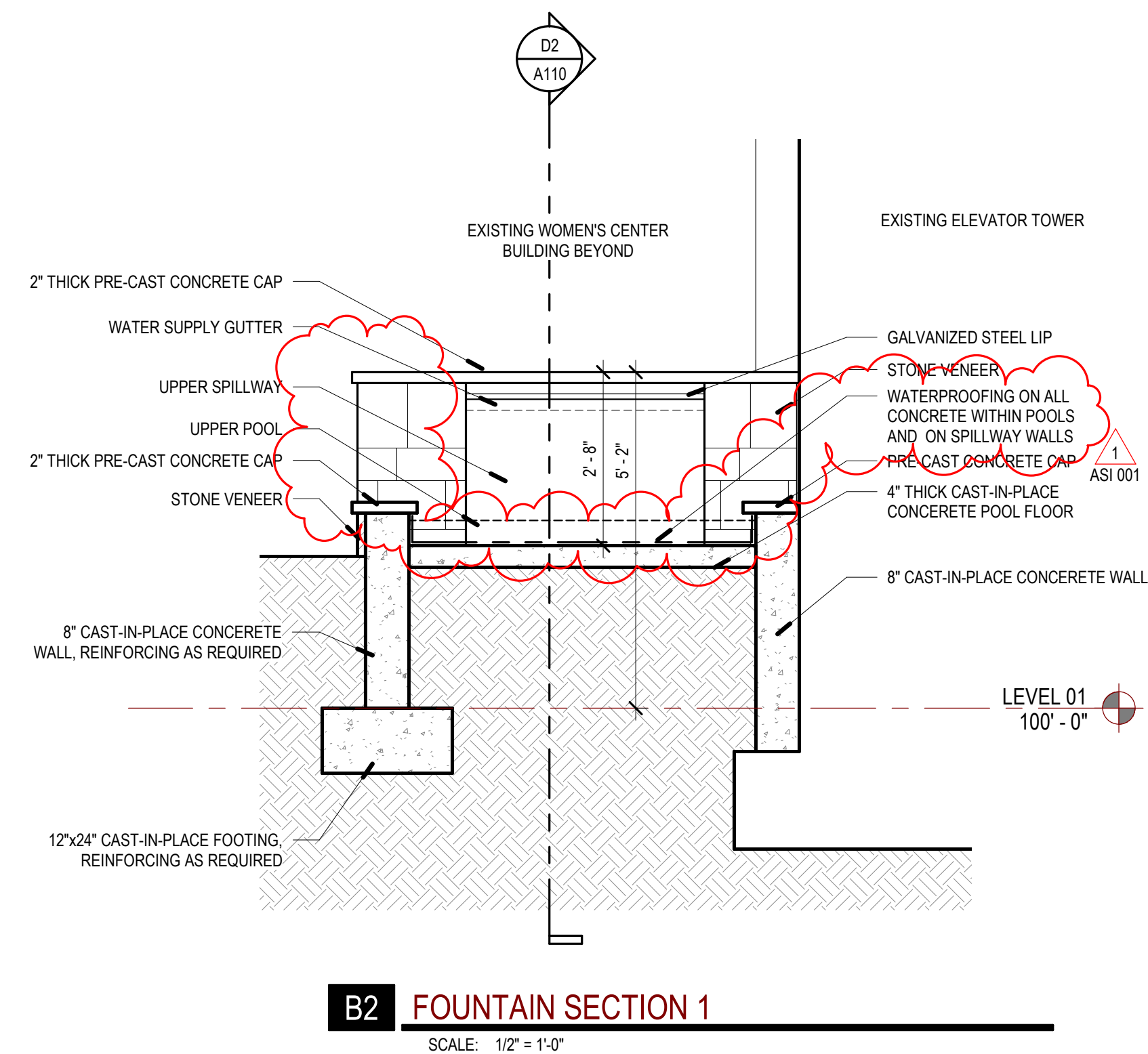
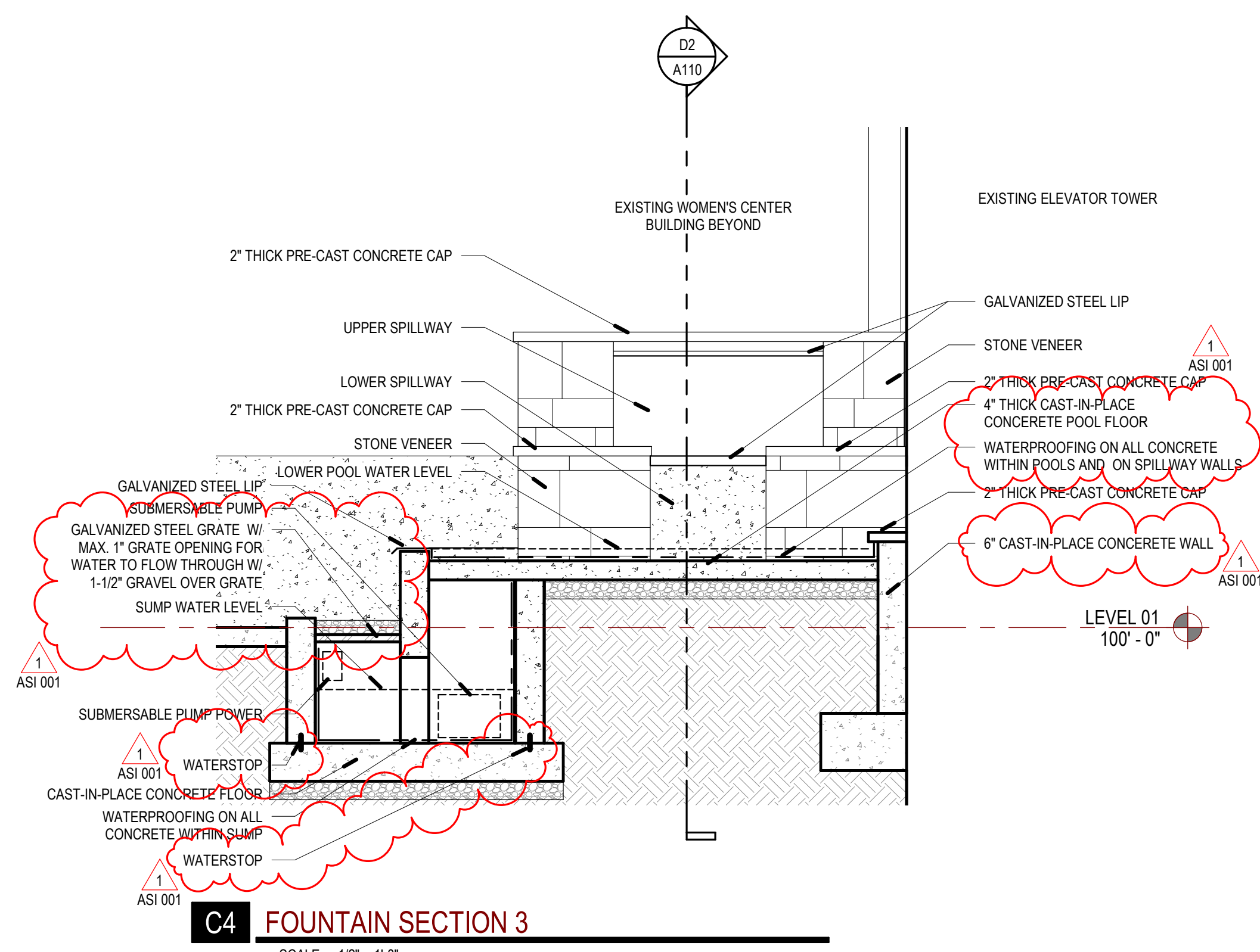
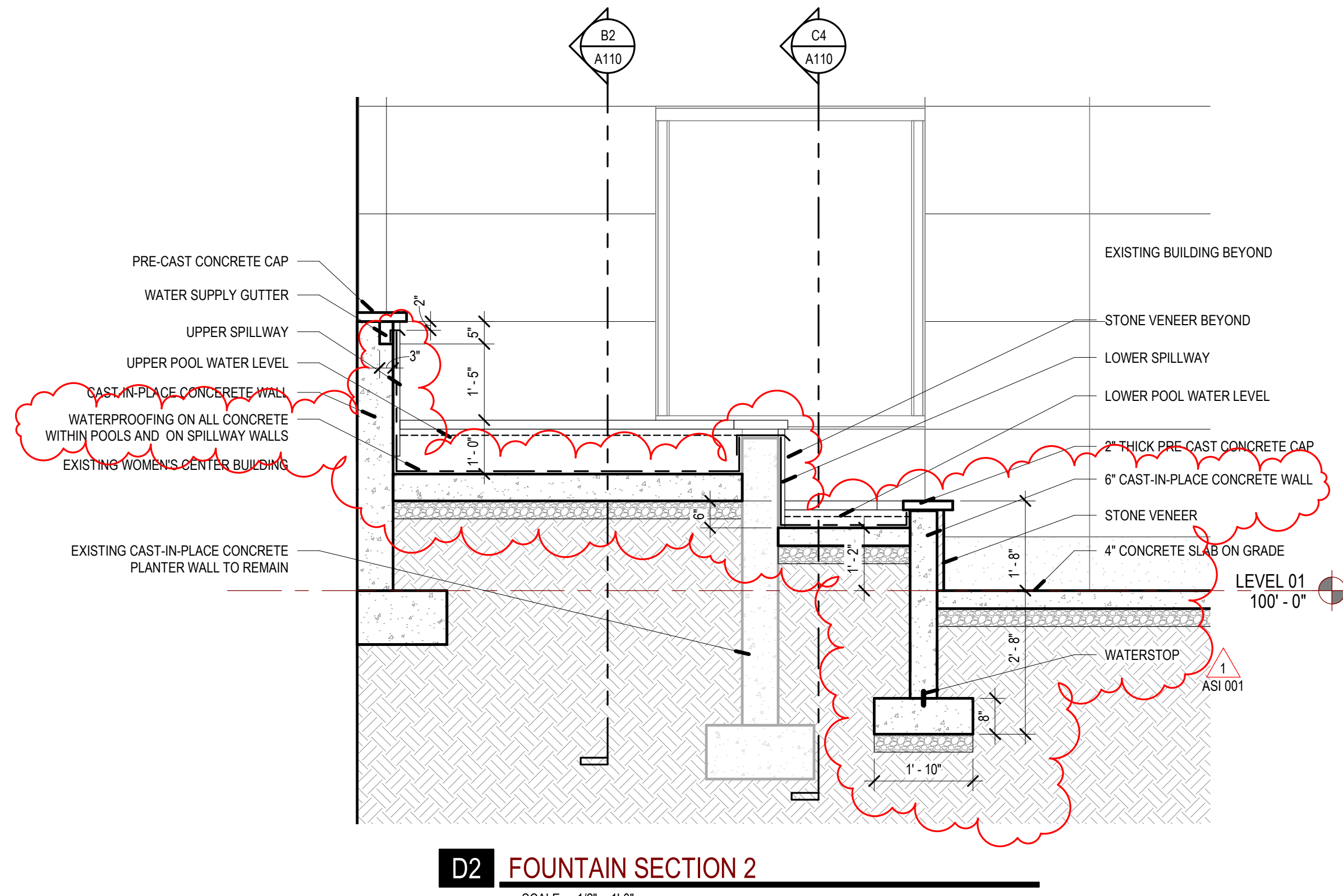
1.2

See included Electrical Narrative and Drawing.

If the Contractor believes the ASI warrants a change in the Contract Time or the Contract Sum, notify the Architect and Owner in writing within 10 calendar days of receipt of the ASI.

A handwritten signature in blue ink, appearing to read 'Michael Rail AIA', written over a horizontal line.

Michael Rail AIA



REV	DATE	DESCRIPTION
1	2021-08-8	ASI 001

VCBO NUMBER:	21010
CLIENT NUMBER:	00000
DATE:	2021-06-25



Mechanical Engineering
Electrical Engineering
Technology Engineering
Acoustical Engineering
Lighting Design
Theatre Design
Fire Protection Engineering
Building Commissioning

Salt Lake City | Phoenix | St. Louis | Baltimore
[p] 800-678-7077
www.spectrum-engineers.com

ASI - #01

Date:	September 20, 2021	From:	Peter Johansen, PE, LEED AP
Job:	Intermountain Alta View Fountain Design	Email:	PEJ@spectrum-engineers.com
Job No.	210323	Phone:	801-401-8422

Supplementary Instruction:

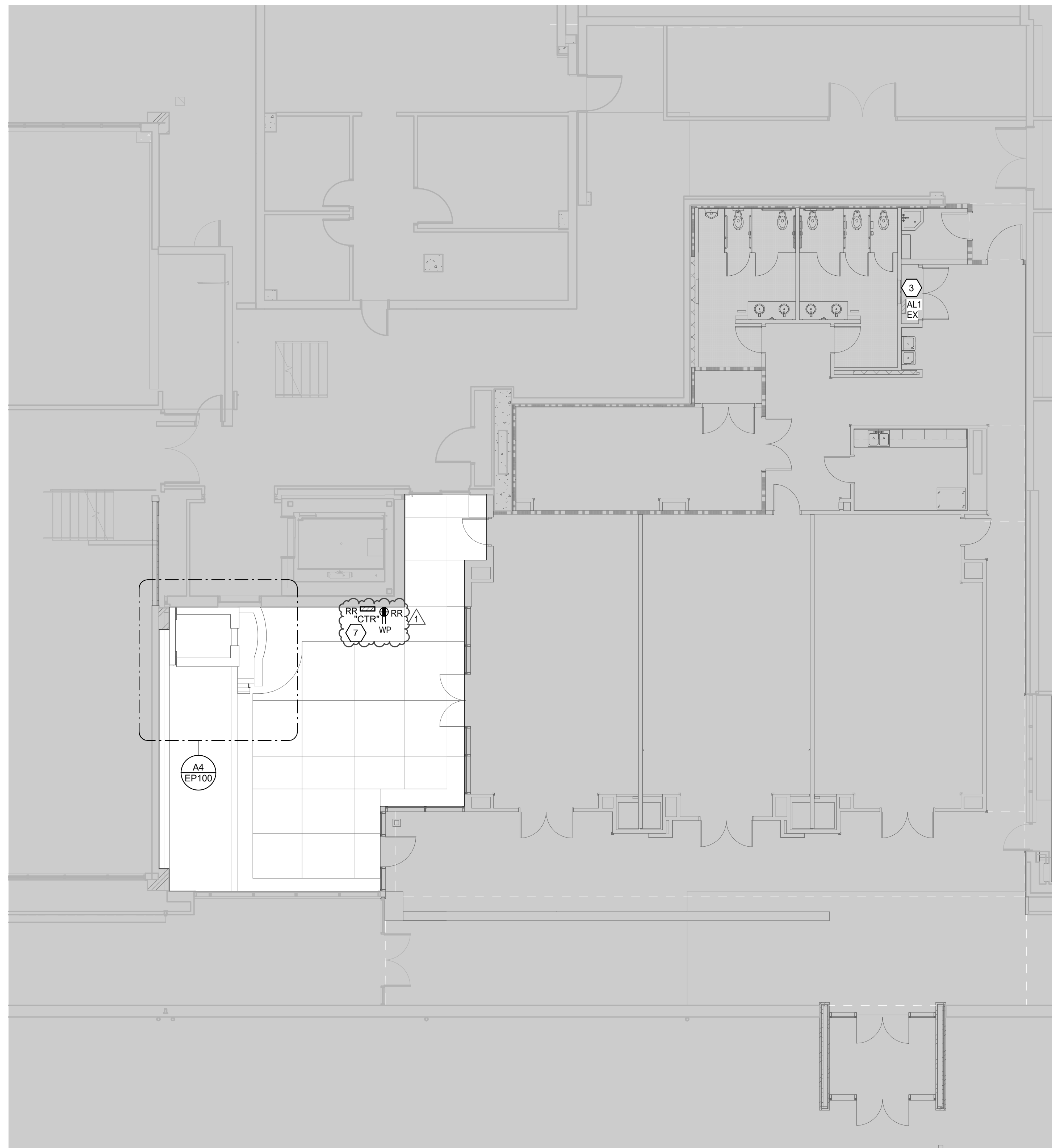
1. EP100 – Power Plan – Level 1 – Overall
 - a. See the rearranged keynotes.
 - b. See the added keynote #6, instructional keynote for lighting circuiting.
 - c. See the added keynote #7, instructional keynote for fountain control box.

GENERAL SHEET NOTES

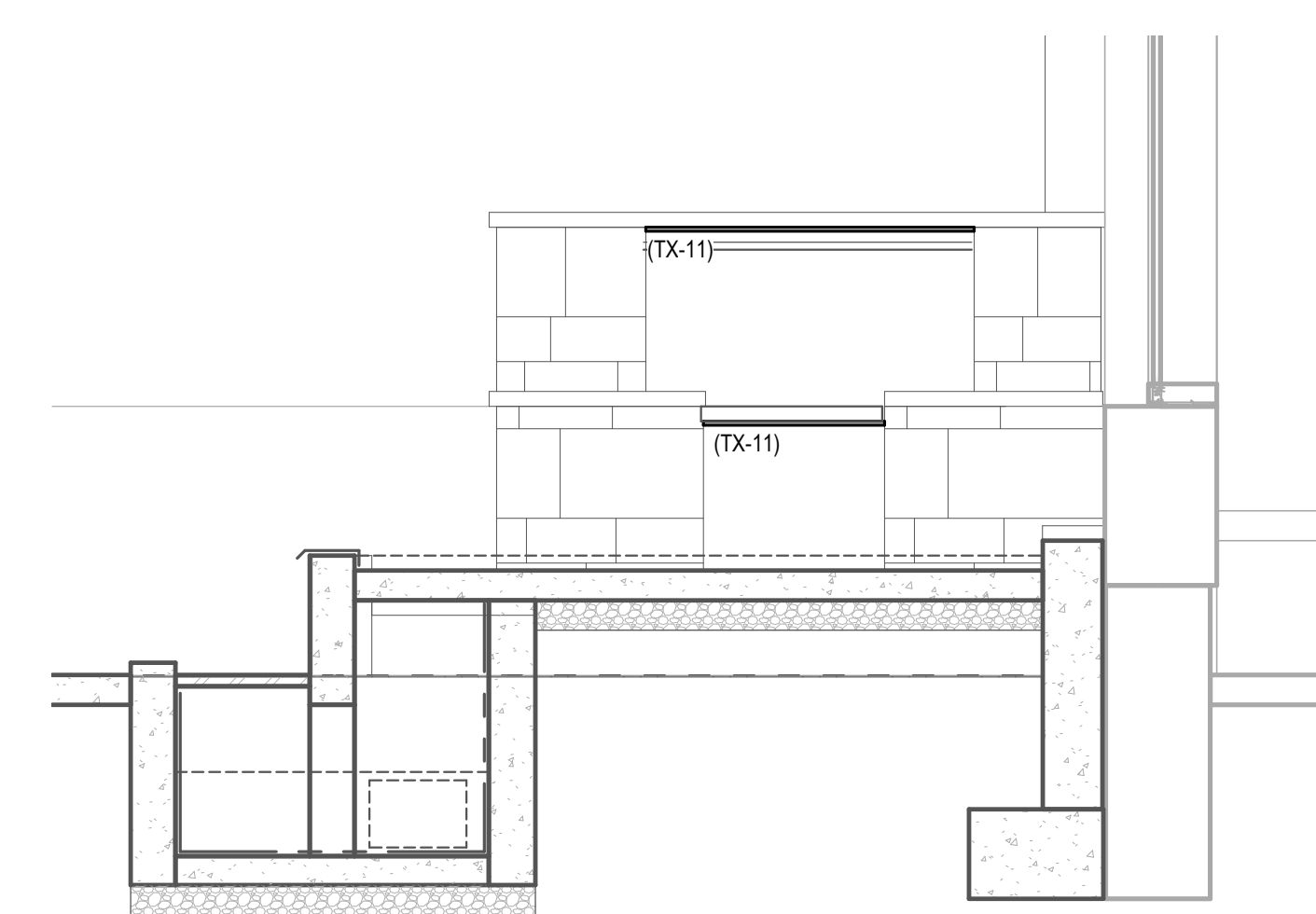
- 1 CIRCUIT FOR FOUNTAIN CONDUCTORS: TWO #10 CU TWHN, #10 GR, .75" CONDUIT.
-
- SHEET KEYNOTES**
- 1 STUB CONDUIT OUT HERE TO FEED THE FOUNTAIN.
 - 2 PROVIDE DISCONNECT TOGGLE SWITCHES IN WEATHER PROOF ENCLOSURE FOR PUMP AND FOUNTAIN LIGHTS. RECESS J-BOX FOR SWITCH WITH WEATHERPROOF COVER INTO STONE WALL OF FOUNTAIN. DO NOT USE SURFACE MOUNT RACEWAY.
 - 3 PROVIDE GFI BREAKER IN EXISTING PANEL AL1.
 - 4 3/4 HP 120 VOLT FOUNTAIN PUMP.
 - 5 PROVIDE A DOUBLE GANG J-BOX LISTED FOR UNDERWATER APPLICATIONS (JP-55/3/4) OR EQUIVALENT. LIGHTS AND PUMP WILL RUN BACK TO THE SAME J-BOX, BUT WILL BE SWITCHED SEPARATELY.
 - 6 CIRCUIT FOUNTAIN LIGHTS FIXTURES TO EXISTING CIRCUIT FEEDING RELOCATED RECEPTACLE SERVING LANDSCAPE LIGHTING CONTROL BOX.
 - 7 RELOCATE RECEPTACLE AND LANDSCAPE LIGHTING CONTROL BOX. EXTEND LANDSCAPE LIGHTING LOW VOLTAGE CABLING TO NEW LOCATION. DO NOT LEAVE A J-BOX BEHIND THE FOUNTAIN WHERE RECEPTACLE WAS PREVIOUSLY LOCATED.

REV	DATE	DESCRIPTION
1	09/20/21	RSI #01

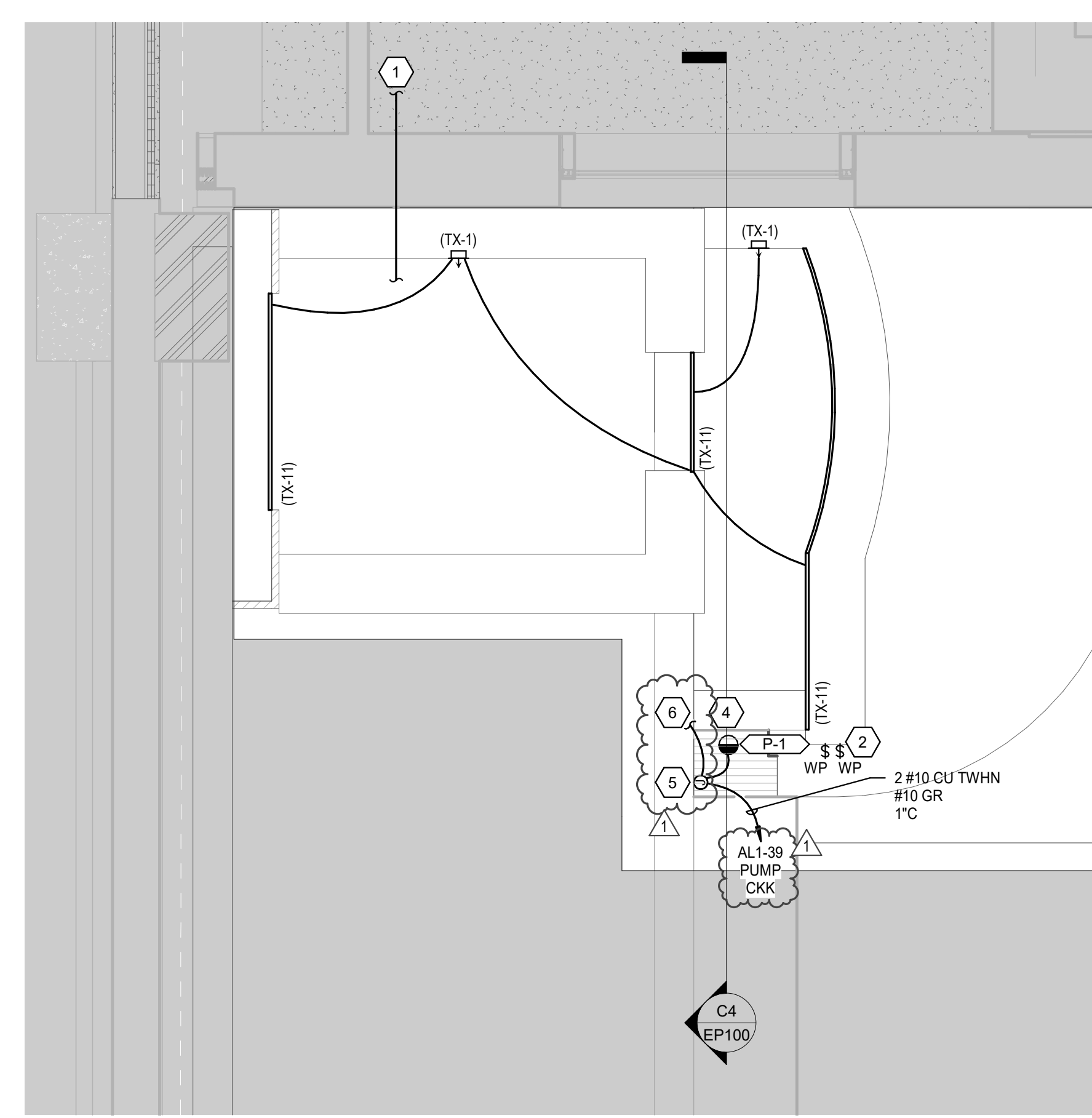
VCBO NUMBER: 21010
CLIENT NUMBER: 00000
DATE: 2021.06.25



A1 POWER PLAN - LEVEL 1 - OVERALL
SCALE: 1/8" = 1'-0"



C4 FOUNTAIN SECTION
SCALE: 1/2" = 1'-0"



A4 POWER PLAN - ENLARGED
SCALE: 1/2" = 1'-0"