



Mechanical Engineering
Electrical Engineering
Technology Engineering
Acoustical Engineering
Lighting Design
Theatre Design
Fire Protection Engineering
Building Commissioning

Salt Lake City | Phoenix | St. Louis | Baltimore
[p] 800-678-7077
www.spectrum-engineers.com

Electrical Addendum #2

Date:	September 12, 2024	From:	Brendan Arita
To:	Gary Blazzard	Email:	Brendan.arita@speceng.com
Company:	HKS Architects	Phone:	801-401-8476
Job:	Intermountain Layton Projects		
Job No:	240095		

This Addendum shall be considered part of the Contract Documents and Project Manual for the above-mentioned project as though it had been issued at the same time and shall be incorporated integrally therewith. Where provisions of the following supplementary data differ from those of the original Contract Documents and Project Manual, the Addendum shall govern and take precedence.

Electrical Addendum

Questions – Answers

1. Plan page EP109 lighting plan shows some 2x2 light fixtures noted as TG22 but that is not listed on the lighting schedule. Maybe they are supposed to be FG22?
 - a. The fixture type has been added the fixture schedule.
2. Plan page EP106 note #8 shows running power to panel XRY2 but I don't see where it shows the location of that panel. Also on that page, there are symbols K1 and K2 towards the bottom right of the power plan. I don't see where those symbols are noted anywhere and I'm not sure what they are. There is a K1 on the Steris drawing page EP502 top left detail but there isn't a K2 listed so I don't know if that's the same thing.
 - a. That is correct only K1 should be shown. I have attached the revised drawings to more accurately reflect the Steris drawings. I have added the location of XRY1 & XRY2 on EP104 as part of this addendum.
3. The panel schedules on page EP601 show isolation panels OR4A and OR4B so I'm assuming those are existing panels in that OR4 room since there isn't a one-line diagram showing that they are new.
 - a. That is correct. Panel OR4A & OR4B are existing isolation panels with added breakers. Refer to the panel schedule for the new breaker requirements.



Mechanical Engineering
Electrical Engineering
Technology Engineering
Acoustical Engineering
Lighting Design
Theatre Design
Fire Protection Engineering
Building Commissioning

Salt Lake City | Phoenix | St. Louis | Baltimore
[p] 800-678-7077
www.spectrum-engineers.com

Drawings

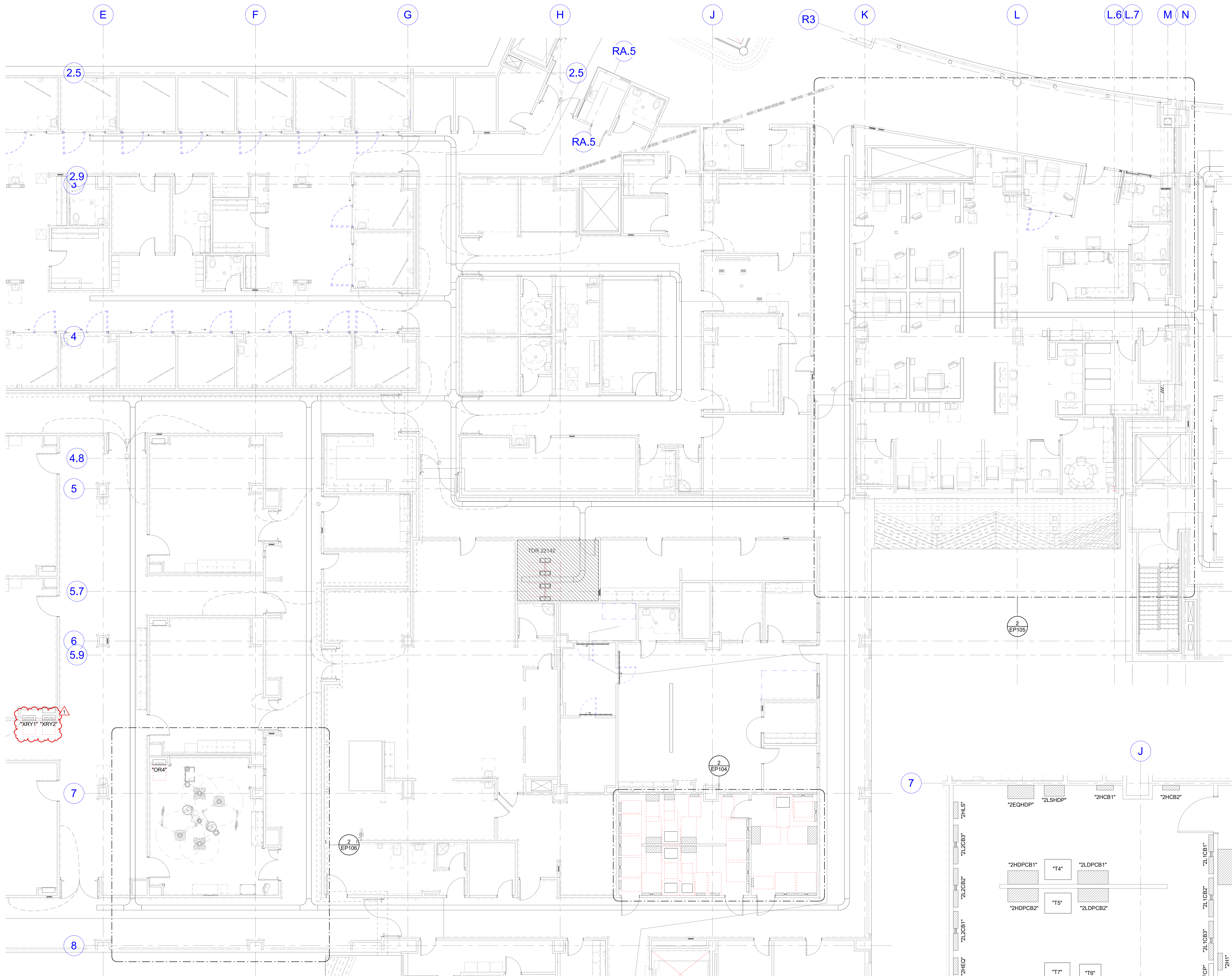
1. EP104 – Level 2 Overall Power Plan
 - a. Added the existing panels XRY1 & XRY2.
2. EP106 – OR Electrical Plans
 - a. Removed the K2 lighting controller.
3. EL601 – Interior Lighting Fixture Schedule
 - a. Added fixture type for TG22.

PLOT DATE:
9/22/2024 5:58:53 PM

TEMPLATE VERSION

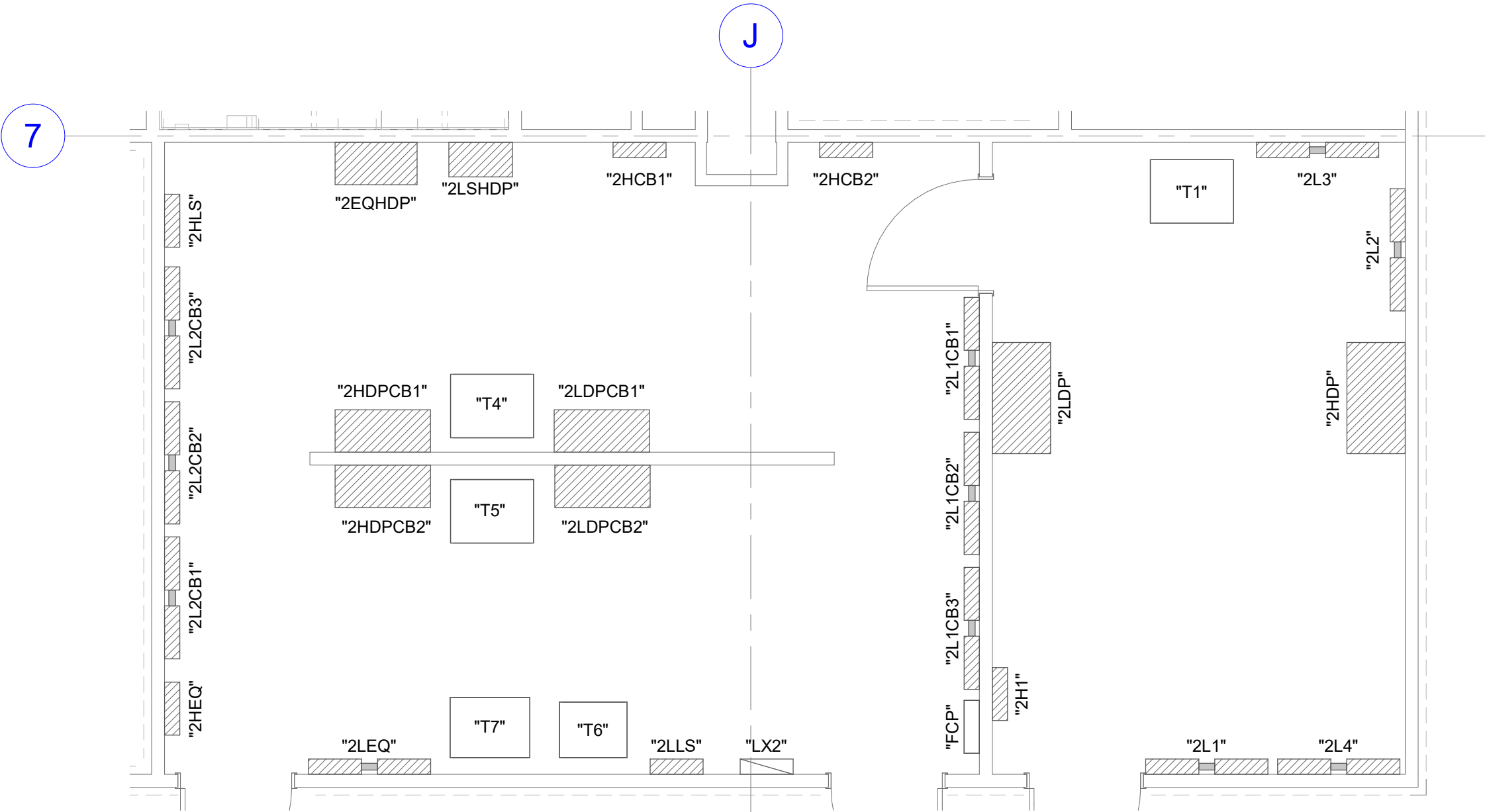
1 LEVEL 2 OVERALL POWER PLAN

SCALE: 1/8" = 1'-0"



2 LEVEL 2 EXISTING ELECTRICAL ROOM

SCALE: 1/4" = 1'-0"



GENERAL SHEET NOTES

- 1 PROVIDE DEDICATED NEUTRALS FOR ALL BRANCH CIRCUITS.
- 2 ALL RECEPTACLES WITHIN 6" OF THE EDGE OF A SINK SHALL BE GFCI PROTECTED.
- 3 ALL WIRING IN PATIENT CARE AREAS SHALL MEET THE REQUIREMENTS OF NEC 517.13.

SHEET KEYNOTES

HKS

ARCHITECT

HKS ARCHITECTS, INC.
222 SOUTH MAIN, SUITE 230
SALT LAKE CITY, UT 84101

STRUCTURAL ENGINEER

REAVELEY ENGINEERS & ASSOCIATES
675 EAST 500 SOUTH, SUITE 400
SALT LAKE CITY, UTAH 84102

MECHANICAL ENGINEER

VAN BOERUM & FRANK ASSOCIATES, INC.
181 EAST 5600 SOUTH, SUITE 130
MURRAY, UTAH 84107

ELECTRICAL ENGINEER

SPECTRUM ENGINEERS, INC.
324 SOUTH STATE STREET, SUITE 400
SALT LAKE CITY, UTAH 84111

SPECTRUM
ENGINEERS
324 S. State St., Suite 400
Salt Lake City, UT 84111
801-328-7077
801-328-5151
fax: 801-328-5155
www.spectrum-engineers.com



LAYTON HOSPITAL MISC PROJECTS

KEY PLAN

REVISION	NO.	DESCRIPTION	DATE
1	Addendum #02		08/12/24

HKS PROJECT NUMBER

26404.000

DATE

08/15/24

ISSUE

CONSTRUCTION

DRAWINGS

SHEET TITLE

**LEVEL 2 OVERALL
POWER PLAN**

SHEET NO.

EP104

© 2008 HKS, INC.

1	PROVIDE DEDICATED NEUTRALS FOR ALL BRANCH CIRCUITS.
2	ALL RECEPTACLES WITHIN 6" OF THE EDGE OF A SINK SHALL BE GFCI PROTECTED
3	ALL WIRING IN PATIENT CARE AREAS SHALL MEET THE REQUIREMENTS OF NEC 517.13.

- 1 120 VOLT CABLE POWER SUPPLY FOR OR ROOM SURGERICAL LIGHT. RUN LOW VOLTAGE CABLE TO CONTROL PANEL AND TO STERIS LIGHTING BOOM. SEE STERIS DRAWINGS FOR INSTALLATION INSTRUCTIONS.
- 2 POWER AND DATA FOR PAX.
- 3 DATA IN CEILING FOR CAMERA.
- 4 PROVIDE THE FOLLOWING TO ANESTHESIA BOOM: THREE ISOLATED 120 VOLT CIRCUITS, FROM CRITICAL BRANCH #1, AND TWO ISOLATED 20 AMP CIRCUITS FROM CRITICAL BRANCH #2 AND SIX DATA DROPS. SEE STERIS DRAWING MGB01 FOR ADDITIONAL CONTRACTOR INSTALLATION RESPONSIBILITIES.
- 5 PROVIDE THE FOLLOWING TO EQUIPMENT BOOM: FOUR EMERGENCY ISOLATED 12 VOLT CIRCUITS, FOUR DATA DROPS.
- 6 PROVIDE DATA IN CEILING FOR ROOM STATUS CAMERA.
- 7 POWER FOR ELAPSED TIME AND CURRENT TIME DIGITAL CLOCKS. RESET BUTTON WILL MOUNT ABOVE COUNTER AT NURSE CHART STATION.
- 8 16 3R 30' X4' RAY-UTLEY W/ DRA-1 LIM SIGNAL AND PLUG CONTROL. TYPE RX2R CIRCUIT TO LASER ISOLATION PANELS IN STERILE CORE. PROVIDE REMOTE MONITOR WITH RECEPTACLE. XRY2 FEED LASER RECEPTACLES LOCATED IN OR-OPS AND OR-OPS.
- 9 120V POWER FOR EMS BRAKES.
- 10 PROVIDE 120V POWER TO MONITOR/LIGHT BOOM LSD01. SEE STERIS DRAWINGS FOR ADDITIONAL CONTRACTOR INSTALLATION RESPONSIBILITIES AUDIO/VIDEO CONNECTIONS, AC LINE VOLTAGE AND DC CONNECTION AND COMMUNICATION CABLEING.
- 11 PROVIDE KEYSWITCH AT 72" AFF FOR TESTING BATTERY PACKS IN EACH OR.
- 12 PROVIDE BATTERY PACK IN TWO G101 FIXTURES.



INTERIOR LIGHTING FIXTURE SCHEDULE												
GENERAL NOTES												
<div><div></div><div></div></div>		<div>1. SUBSTITUTIONS AND/OR EQUAL FIXTURES MUST RECEIVE APPROVAL PRIOR TO BIDDING, THEY MUST BE SUBMITTED TO THE ENGINEER NO LESS THAN 2 WEEKS PRIOR TO BID OPENING.</div> <div>2. SAMPLES MUST BE PROVIDED FOR ANY AND ALL FIXTURES UPON A/E REQUEST PRIOR TO RELEASING FIXTURES.</div> <div>3. ALL FIXTURES SHALL BE LISTED AND APPROVED FOR THEIR INTENDED USE AND LOCATION.</div> <div>4. VERIFY THE PROPER MOUNTING KITS OR ACCESSORIES TO FACILITATE INSTALLATION AS SHOWN AT EACH LOCATION ON THE DRAWINGS.</div> <div>5. COMPLY WITH THE "INTERIOR LIGHTING" SECTION OF THE SPECIFICATIONS.</div> <div>6. ALL LIGHT FIXTURES TO BE EITHER "DLC" OR "LIGHTING FACTS" LISTED OR TO BE APPROVED BY ARCHITECT/ENGINEER AND OWNER.</div> <div>7. CONTRACTOR ALLOWANCE PRICES ARE ACCURATE WHEN THIS JOB WAS SPECIFIED. CONTRACTOR AND ELECTRICAL DISTRIBUTOR SHALL VERIFY THIS ALLOWANCE AND REPORT ANY PROBLEMS TO THE ENGINEER BEFORE THE BID. ALLOWANCE PRICE MAY OR MAY NOT INCLUDE LAMP(S) OR FREIGHT AS NOTED, AND DO NOT INCLUDE ANY TAXES.</div>										
ID	DESCRIPTION	SIZE (NOMINAL)	LUMINAIRE DELIVERED DIRECT LUMENS	LUMINAIRE DELIVERED INDIRECT LUMENS	COLOR TEMP	CRI	DRIVER TYPE	VOLTAGE	WATTS	MANUFACTURER (CATALOG SERIES)		
(D6)	DESCRIPTION: 6" ROUND, RECESSED LED DOWNLIGHT, SEMI-SPECULAR REFLECTOR MOUNTING: CEILING, RECESSED FINISH: WHITE TRIM FINISH OPTICS: - OPTIONS: - EM: -	LENGTH: - WIDTH: - DEPTH: 0" - 6" DIAMETER: 0" - 6"	1,500		3500K		0-10V DIMMING (1%)	120/277	19	GOTHAM (EVO 35/15 AR LSS MWD MVOLT G21 TRW) HALO (HC615D010HM612835 61MDHWF) LIGHTOLIER (6RNP6RDL15835CC210U)		
(D6-S)	DESCRIPTION: 6" ROUND, RECESSED LED SHOWER DOWNLIGHT, LENSED MOUNTING: CEILING, RECESSED FINISH: WHITE TRIM FINISH OPTICS: - OPTIONS: - EM: -	LENGTH: - WIDTH: - DEPTH: - DIAMETER: 0" - 6"	1,500		3500K		0-10V DIMMING (1%)	120/277	19	GOTHAM (EVO-35/15-6DFR) LITON (LHALD) HALO (HC615) INTENSE (SSG3DOR)		
(D6M)	DESCRIPTION: 6" ROUND, RECESSED LED DOWNLIGHT, SEMI-SPECULAR REFLECTOR MOUNTING: CEILING, RECESSED FINISH: WHITE TRIM FINISH OPTICS: - OPTIONS: - EM: -	LENGTH: - WIDTH: - DEPTH: - DIAMETER: 0" - 6"	2,000		3500K		0-10V DIMMING (1%)	120/277	23	GOTHAM (EVO 35/15 AR LSS MWD MVOLT G21 TRW) HALO (HC615D010HM612835 61MDHWF) LIGHTOLIER (6RNP6RDL15835CC210U)		
(DX6)	DESCRIPTION: 6" ROUND, RECESSED LED LENSED SURGICAL DOWNLIGHT, WET LOCATION, REGRESSED LENS, WHITE REFLECTOR FINISH: WHITE TRIM FINISH OPTICS: - OPTIONS: - EM: -	LENGTH: - WIDTH: - DEPTH: - DIAMETER: 0" - 6"	2,000		3500K		0-10V DIMMING (1%)	120/277	23	GOTHAM (EVO 35/20 6WR WD MVO LT EZ10)		
(EGF101)	DESCRIPTION: 2' X 4' LED SURGICAL TROFFER MOUNTING: CEILING, RECESSED FINISH: - OPTICS: - OPTIONS: - BATTERY PACK, FLANGE KIT EM: -	LENGTH: 4' - 0" WIDTH: 2' - 0" DEPTH: -	16,000		3500K		0-10V DIMMING (1%)	120/277	200	KENALL (M4SEDI-14-76L35K-DCC-DV-2F-PAH-ASYM (LEL)) KURTZON (ML-OR) NEW STAR(SSSF24-HCOC-L8351-A-UN-DM)		
(FG22)	DESCRIPTION: 2' X 2' LED FLAT PANEL, GRID LAY-IN MOUNTING: CEILING, RECESSED FINISH: SCBA OPTICS: - OPTIONS: - EM: -	LENGTH: 2' - 0" WIDTH: 2' - 0" DEPTH: -	3,400		3500K		0-10V DIMMING (1%)	120/277	40	DAYBRITE (2FP238L840WDSUNVDM) LITHONIA (EPANL) TRULY GREEN SOLUTIONS (882440-35-S-F)		
(FG24)	DESCRIPTION: 2' X 4' LED FLAT PANEL, GRID LAY-IN MOUNTING: CEILING, RECESSED FINISH: SCBA OPTICS: - OPTIONS: - EM: -	LENGTH: 4' - 0" WIDTH: 2' - 0" DEPTH: -	4,300		3500K		0-10V DIMMING (1%)	120/277	50	DAYBRITE (2FP243L8345DSUNV DIM) LITHONIA (EPANL) TRULY GREEN SOLUTIONS (882440-35-S-F)		
(GF14)	DESCRIPTION: 1' X 4' LED SURGICAL TROFFER MOUNTING: CEILING, RECESSED FINISH: - OPTICS: - OPTIONS: - FLANGE KIT EM: -	LENGTH: 4' - 0" WIDTH: 1' - 0" DEPTH: -	8,000		3500K		0-10V DIMMING (1%)	120/277	100	KENALL (M4SEDI-14-76L35K-DCC-DV-2F-PAH-ASYM (LEL))		
(GF101)	DESCRIPTION: 2' X 4' LED SURGICAL TROFFER MOUNTING: CEILING, RECESSED FINISH: - OPTICS: - OPTIONS: - FLANGE KIT EM: -	LENGTH: 4' - 0" WIDTH: 2' - 0" DEPTH: -	16,000		3500K		0-10V DIMMING (1%)	120/277	200	KENALL (M4SEDI-24-76L35K-DCC-DV-2F-PAH-ASYM (LEL)) KURTZON (ML-OR) NEW STAR(SSSF24-HCOC-L8351-A-UN-DM)		
(LG4)	DESCRIPTION: 4" X 4' LINEAR RECESSED SLOT, GRID MOUNT MOUNTING: CEILING, RECESSED FINISH: SCBA OPTICS: - OPTIONS: - EM: -	LENGTH: 4" - 0" WIDTH: 0" - 4" DEPTH: -	2,000		3500K		0-10V DIMMING (1%)	120/277	22	PINNACLE (E4A-835-4'-GX-U-OL-1-1-W) NECRAY (S12ADR) MARK LIGHTING (SL4L)		
(LG8)	DESCRIPTION: 4" X 8' LINEAR RECESSED SLOT, GRID MOUNT MOUNTING: CEILING, RECESSED FINISH: SCBA OPTICS: - OPTIONS: - EM: -	LENGTH: 8" - 0" WIDTH: 0" - 4" DEPTH: -	4,000		3500K		0-10V DIMMING (1%)	120/277	48	PINNACLE (E4A-835-8'-GX-U-OL-1-1-W) NECRAY (S12ADR) MARK LIGHTING (SL4L)		
(NR)	DESCRIPTION: LED NIGHTLIGHT, RECESSED IN WALL, AMBER MOUNTING: RECESSED, WALL FINISH: WHITE GLOSS FINISH OPTICS: - OPTIONS: TORX HEAD WITH CENTER PIN FASTENERS, HIGH IMPACT ACRYLIC LENS EM: -	LENGTH: 0" - 2.5" WIDTH: 0" - 3" DEPTH: -	150		AMBER		NO DIMMING	120/277	5	KENNALL (MCSL-HR-MW-2L35K-DV) HEALTHCARE (HNL610-MV-LED-AMB-TR-FW) NEW STAR (HNL HH LA UN NF ND AM)		
(PC4)	DESCRIPTION: 4" PENDANT STEM CYLINDER MOUNTING: PENDANT FINISH: SCBA OPTICS: CLEAR REFLECTOR, MATTE DIFFUSE, MEDIUM WIDE DISTRIBUTION OPTIONS: COORDINATE WITH ARCHITECT IN FIELD FOR SUSPENSION HEIGHT EM: NONE	HEIGHT: 9" DIAMETER: 6.5" APERTURE: 4"	1,500		3000K	80	0-10V DIMMING (1%)	120/277V	14	GOTHAM (EVO4PC) PORTFOLIO (LER48) LIGHTOLIER (C4PDL)		
(PE1)	DESCRIPTION: LAY-IN GRID MOUNT, AMBIENT/READING AND EXAM LIGHT WITH 2 DIRECTIONAL READING LIGHTS, INGRESS BARRIER DOOR, ANTIMICROBIAL FINISH ON EXPOSED SURFACES, 7400 LUMEN EXAM LIGHT, 4000 LUMEN AMBIENT LIGHT MOUNTING: RECESSED FINISH: - OPTICS: - OPTIONS: EXAM, AMBIENT, READING EM: -	LENGTH: 4' - 0" WIDTH: 2' - 0" DEPTH: -	11,400		3500K		0-10V DIMMING (1%)	120/277	135	KENALL (MPCADE24-G-45L/80L40K-DCC-DV-1 B-AC-AMF-LRL) NEW STAR (SMDOS-HC-L340-L240-RL-UN) HEALTHCARE (HPT624-G-UNV-PAH-LED40-FC100-LV D-AC-DIM-AM-SL)		
(PE-3)	DESCRIPTION: LABOR AND DELIVERY MOTORIZED PROCEDURE LIGHT MOUNTING: RECESSED FINISH: - OPTICS: - OPTIONS: - EM: -	LENGTH: 2' - 0" WIDTH: 2' - 0" DEPTH: -	8,000		3500K	80	-	120/277	280	OWNER FURNISHED CONTRACTOR INSTALLED		
(SC2)	DESCRIPTION: 2" CYLINDER MOUNTING: WALL FINISH: SCBA OPTICS: CLEAR REFLECTOR, MATTE DIFFUSE, MEDIUM DISTRIBUTION OPTIONS: - EM: NONE	HEIGHT: 5" DIAMETER: 3" APERTURE: 2"	1,500		3000K	80	LED (0-10V DIMMING) 1%	120/277V	14	GOTHAM (EVO4SC) SENSO (652) LIGHTOLIER (C2CPSDL)		
(SW2)	DESCRIPTION: 2' LED VANITY LIGHT, SATIN CHROME FINISH, 2.25" WIDE MOUNTING: SURFACE, WALL FINISH: SCBA OPTICS: - OPTIONS: - EM: -	LENGTH: 2' - 0" WIDTH: 0" - 2.25" DEPTH: -	2,000		3500K		NO DIMMING	120/277	19	EDGE LIGHT (TW12-S11-1RE-36"-35K-CH) EUREKA (3541-35-LED-17-40-120/277-SC-WH) LBL (LW496-OP-XX-LED-277) WAC (WS-77363) BIRCHWOOD (NOL-LED-225)		
(TG22)	DESCRIPTION: 2' X 2' LED TROFFER, EDGE LIT PANELS, GRID LAY-IN MOUNTING: CEILING, RECESSED FINISH: SCBA OPTICS: - OPTIONS: - EM: -	LENGTH: 2' - 0" WIDTH: 2' - 0" DEPTH: -	3,400		4000K		0-10V DIMMING (1%)	120/277	40	METALUX (22EN-LD2-25-UNV-L835-CD1-U) HE WILLIAMS (AP-22-L43/R35-DIM1-JUM) LITHONIA (ENVX 2X2 HRGC 4000LM 80 DRI 35K MIN1 ZT MVOLT)		
(TG24)	DESCRIPTION: 2' X 4' LED TROFFER, EDGE LIT PANELS, GRID LAY-IN MOUNTING: CEILING, RECESSED FINISH: SCBA OPTICS: - OPTIONS: - EM: -	LENGTH: 4' - 0" WIDTH: 2' - 0" DEPTH: -	4,300		3500K		0-10V DIMMING (1%)	120/277	60	METALUX (24EN-LD2-45-UNV-L835-CD1-U) HE WILLIAMS (AP-22-L43/R35-DIM1-JUM) LITHONIA (ENVX)		
(TG24H)	DESCRIPTION: 2' X 4' LED TROFFER, EDGE LIT PANELS, GRID LAY-IN MOUNTING: CEILING, RECESSED FINISH: SCBA OPTICS: - OPTIONS: - EM: -	LENGTH: 4' - 0" WIDTH: 2' - 0" DEPTH: -	6,700		3500K		0-10V DIMMING (1%)	120/277	60	METALUX (24EN-LD2-45-UNV-L835-CD1-U) HE WILLIAMS (AP-22-L43/R35-DIM1-JUM) LITHONIA (ENVX)		
(UC2)	DESCRIPTION: 2' LED UNDERCABINET LIGHT MOUNTING: SURFACE FINISH: SCBA OPTICS: - OPTIONS: - EM: -	LENGTH: 2' - 0" WIDTH: - DEPTH: -	600		3500K		ELV DIMMING	120/277	8	DAY-BRITE (LINC5100E-L28-935-UNV-WHG-DIM) KENALL (ALUCLED-1-MW-11L35K-24-277) AIREY-THOMPSON (13HC-N-35K-24-2-3-D11) KELVIX (UC22-3040 010V 120/277 WH)		
(WB1)	DESCRIPTION: 2' LED PATIENT ROOM VANITY LIGHT, SATIN CHROME FINISH: SURFACE, WALL FINISH: SCBA OPTICS: - OPTIONS: - EM: -	LENGTH: 2' - 0" WIDTH: 0" - 2.25" DEPTH: -	2,000		3500K		LED (0-10V DIMMING) 1%	120/277	21	LUMINI (EXPV 24 HE45M0 40 F1 WNI) BROWNLEE (1276 NT H16 40K AMF)		

