





## ARCHITECT

HKS ARCHITECTS, INC.  
222 SOUTH MAIN, SUITE 230  
SALT LAKE CITY, UT 84101

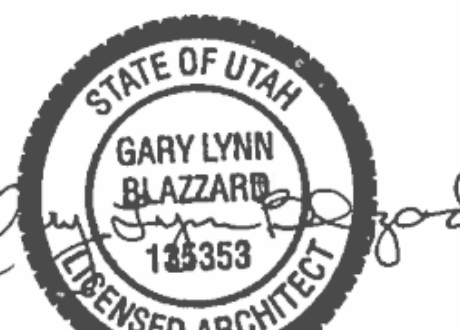
## STRUCTURAL ENGINEER

REAVELEY ENGINEERS & ASSOCIATES  
675 EAST 500 SOUTH, SUITE 400  
SALT LAKE CITY, UTAH 84102

## MECHANICAL ENGINEER

VAN BOERUM & FRANK ASSOCIATES, INC.  
181 EAST 5600 SOUTH, SUITE 130  
MURRAY, UTAH 84107

## ELECTRICAL ENGINEER

SPECTRUM ENGINEERS, INC.  
324 SOUTH STATE STREET, SUITE 400  
SALT LAKE CITY, UTAH 84111LAYTON HOSPITAL  
MISC PROJECTS

KEY PLAN

REVISION  
NO. DESCRIPTION DATE

HKS PROJECT NUMBER

26404.000

DATE

8/15/2024

ISSUE

CONSTRUCTION

DOCUMENTS

SHEET TITLE

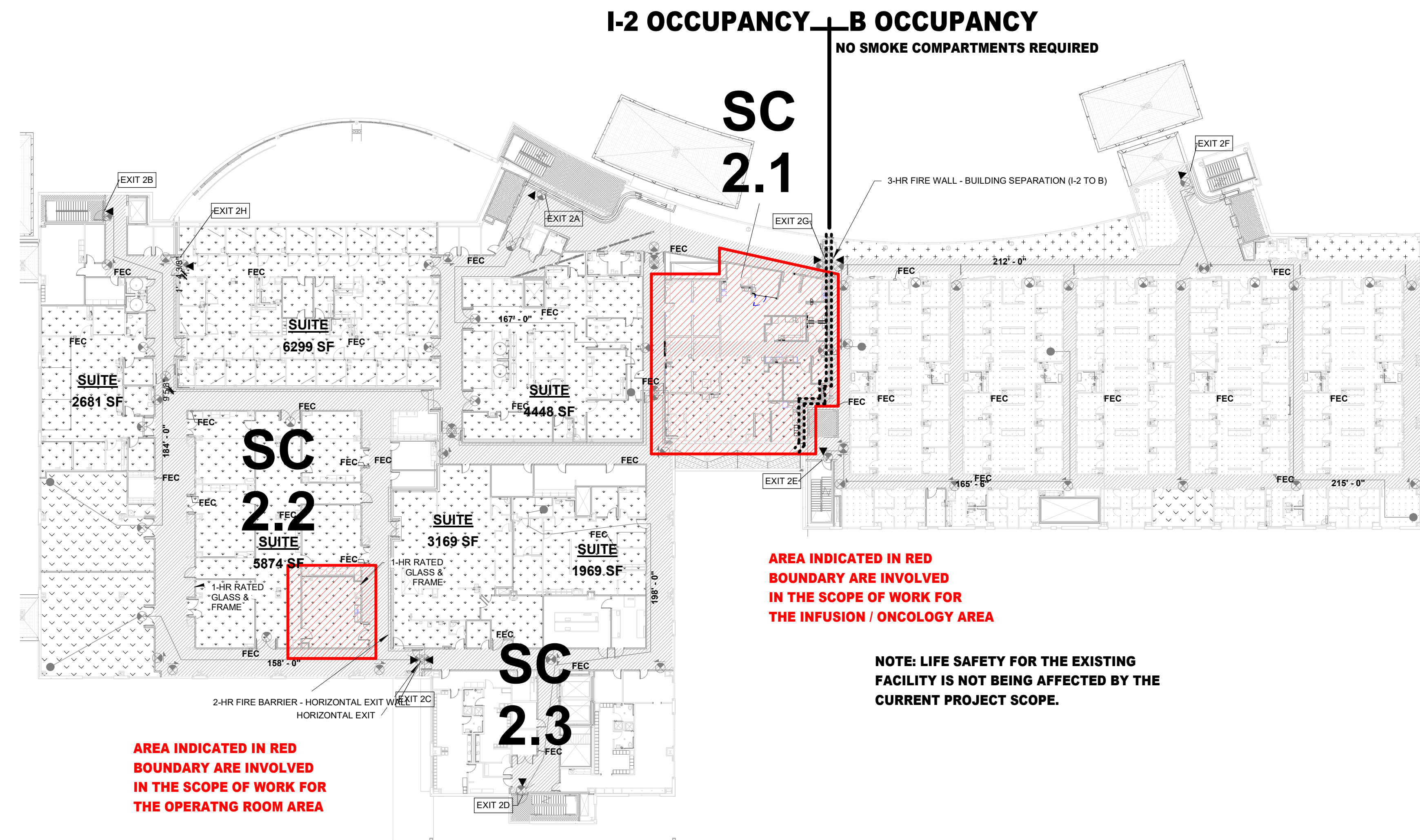
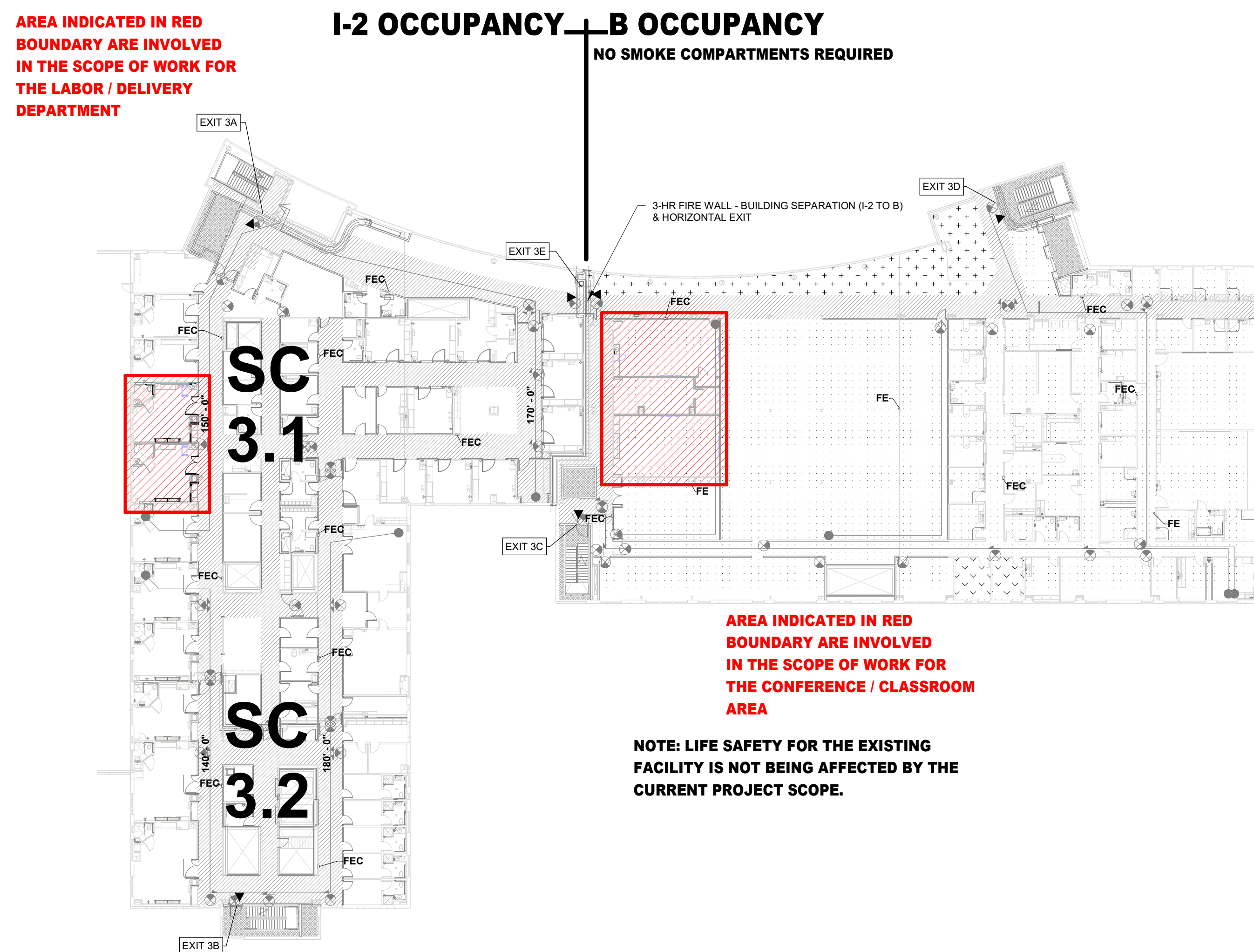
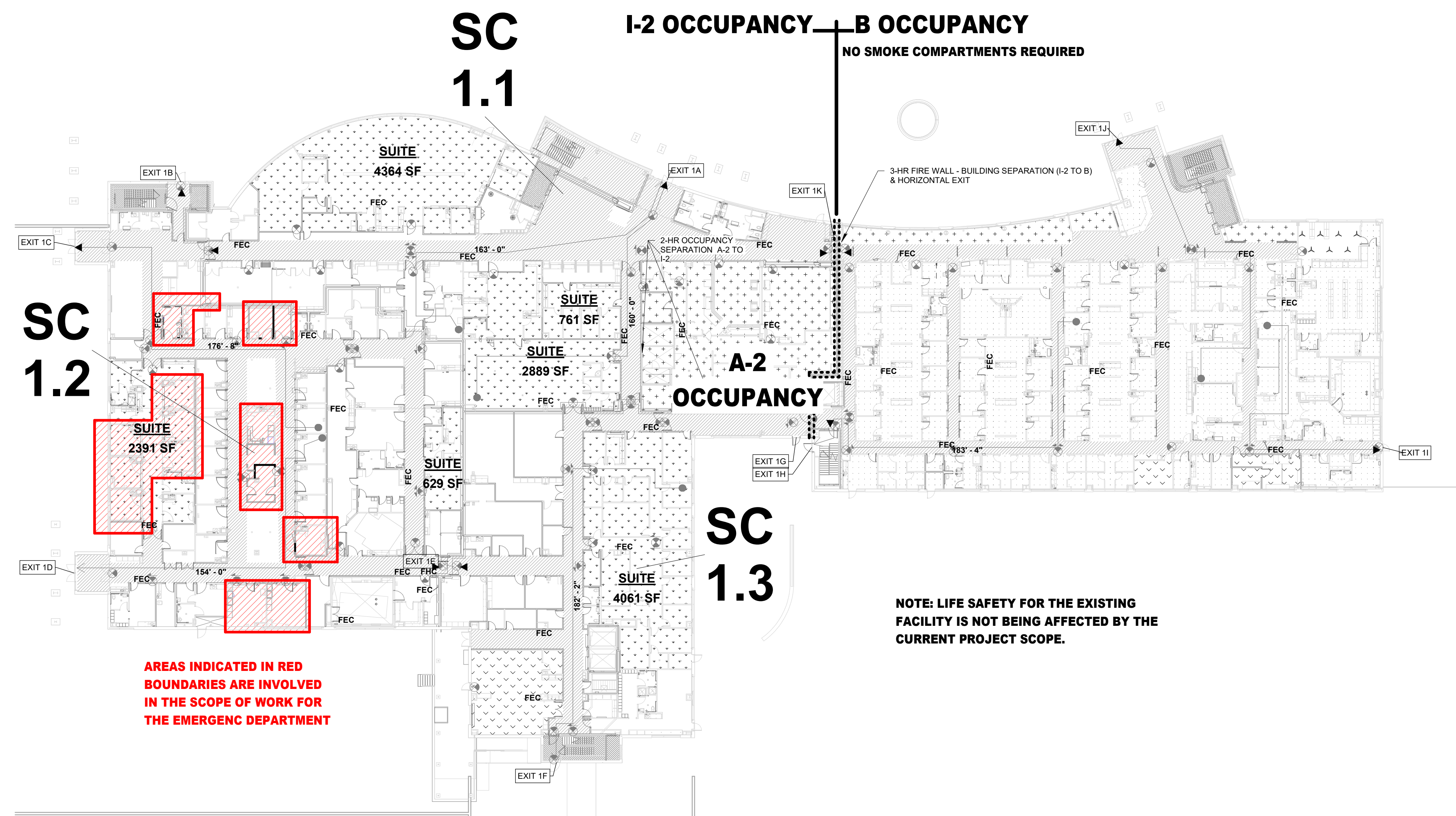
LIFE SAFETY

PLANS

SHEET NO.

ALS.01

LIFE SAFETY PLAN LEGEND			
1 HR FIRE BARRIER	EXIT ENCLOSURE	RETAIL	
1 HR FIRE / SMOKE BARRIER	EXIT CORRIDOR	STORAGE	
2 HR FIRE / SMOKE BARRIER	SUITE		
SMOKE PARTITION (NON RATED)	BUSINESS OCCUPANCY		
SMOKE COMPARTMENT WALL	ASSEMBLY		
HORIZONTAL EXIT WALL	FIRE DEPARTMENT CONNECTION		
OCCUPANCY SEPARATION WALL	FIRE EXTINGUISHER CABINET		
	FIRE EXTINGUISHER		
	TRAVEL DISTANCE FROM THE MOST REMOTE POINT TO THE CLOSEST EXIT		
	TRAVEL DISTANCE WITHIN A SMOKE ZONE TO AN ADJACENT SMOKE ZONE		
	EXIT SIGN - HATCH INDICATES EXIT		
	TEXT AND ARROW INDICATES DIRECTION		

02 LIFE SAFETY PLAN - LEVEL 2 OR & INFUSION  
1" = 30'-0"03 LIFE SAFETY PLAN - LEVEL 3- LDR & CONF ROOM  
1" = 30'-0"01 LIFE SAFETY PLAN - LEVEL 1 ED  
1" = 30'-0"



## ARCHITECT

HKS ARCHITECTS, INC.  
222 SOUTH MAIN, SUITE 230  
SALT LAKE CITY, UT 84101

## STRUCTURAL ENGINEER

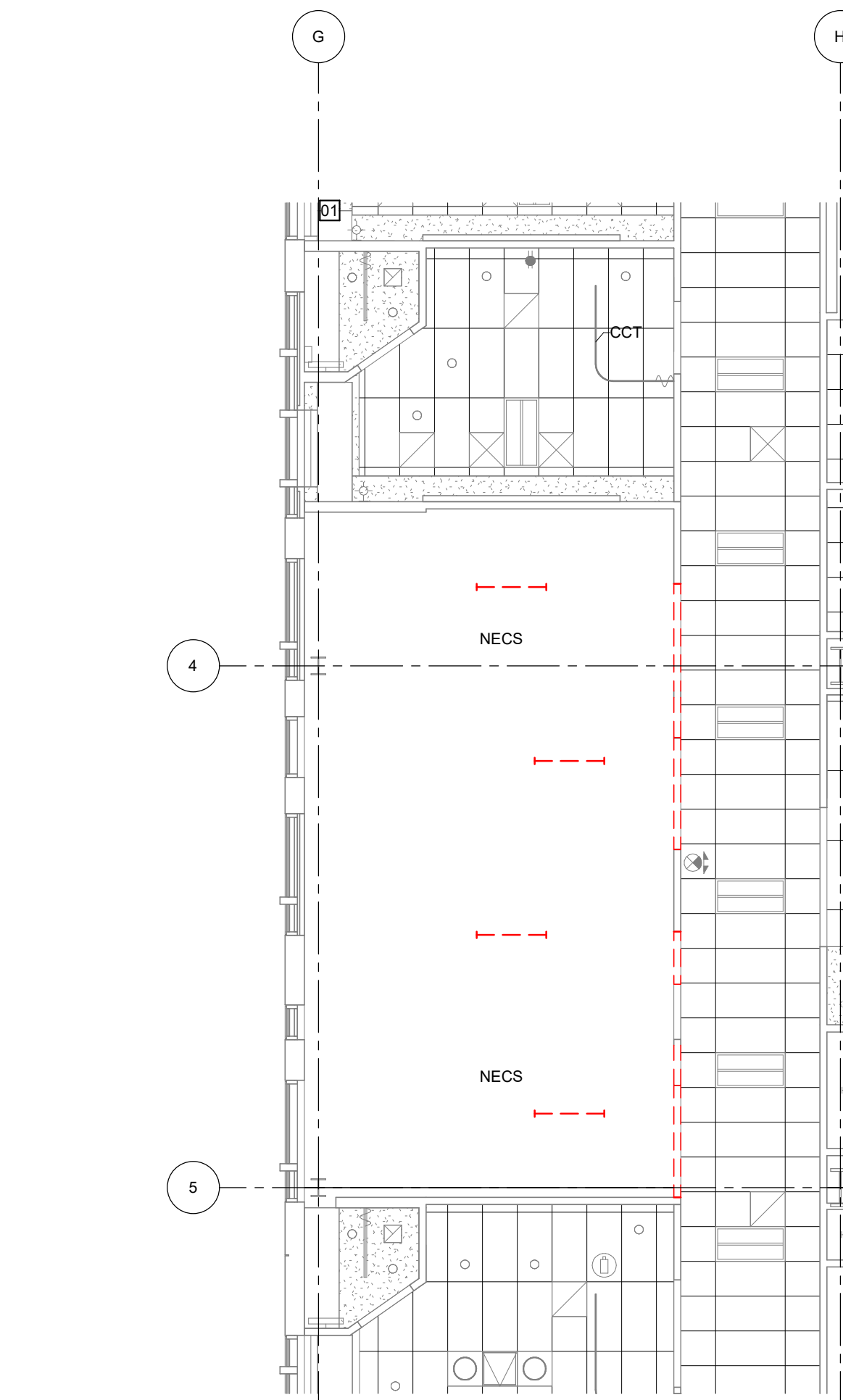
REAVELEY ENGINEERS & ASSOCIATES  
675 EAST 500 SOUTH, SUITE 400  
SALT LAKE CITY, UTAH 84102

## MECHANICAL ENGINEER

VAN BOERUM & FRANK ASSOCIATES, INC.  
181 EAST 5600 SOUTH, SUITE 130  
MURRAY, UTAH 84107

## ELECTRICAL ENGINEER

SPECTRUM ENGINEERS, INC.  
324 SOUTH STATE STREET, SUITE 400  
SALT LAKE CITY, UTAH 84111

**03 LDR CORRIDOR DEMO PICTS**  
1/4" = 1'-0"**02 LEVEL 3 LDR DEMO RCP PLAN**  
1/8" = 1'-0"**REFLECTED CEILING DEMOLITION KEYED NOTES** (GENERIC FOR ENTIRE PROJECT)

- ACPD** - ACOUSTICAL PANEL CEILING SYSTEM IN THIS ROOM / AREA SHALL BE REMOVED, INCLUDING WIRE SUSPENSION, WHERE A PORTION OF THE CEILING IS REMOVED. COORDINATE WITH REFLECTED CEILING REMODEL PLAN.
- FDCG** - FURRED DOWN GYP BD CEILING ELEMENT, INCLUDING FRAMING, SHALL BE REMOVED.
- GBKD** - GYPSUM BOARD BULKHEAD TO BE REMOVED, INCLUDING ALL FRAMING.
- GYPD** - GYPSUM BOARD ON HORIZONTAL METAL STUD FRAMING, SHALL BE REMOVED, INCLUDING THE METAL STUD FRAMING.
- CCCTD** - CUBICLE CURTAIN TRACK / CURTAIN SHALL BE REMOVED - SALVAGE TO OWNER.
- WGQD** - WOOD GRILLE CEILING SYSTEM SHALL BE REMOVED.
- CSAN** - CEILING SYSTEM REMOVAL AS NECESSARY FOR INSTALLATION OF NEW LIGHTS AND ACCOMPANYING SUPPORT SYSTEM.
- NECS** - NO EXISTING CEILING SYSTEM IN THIS AREA.

**REFLECTED CEILING DEMOLITION LEGEND**

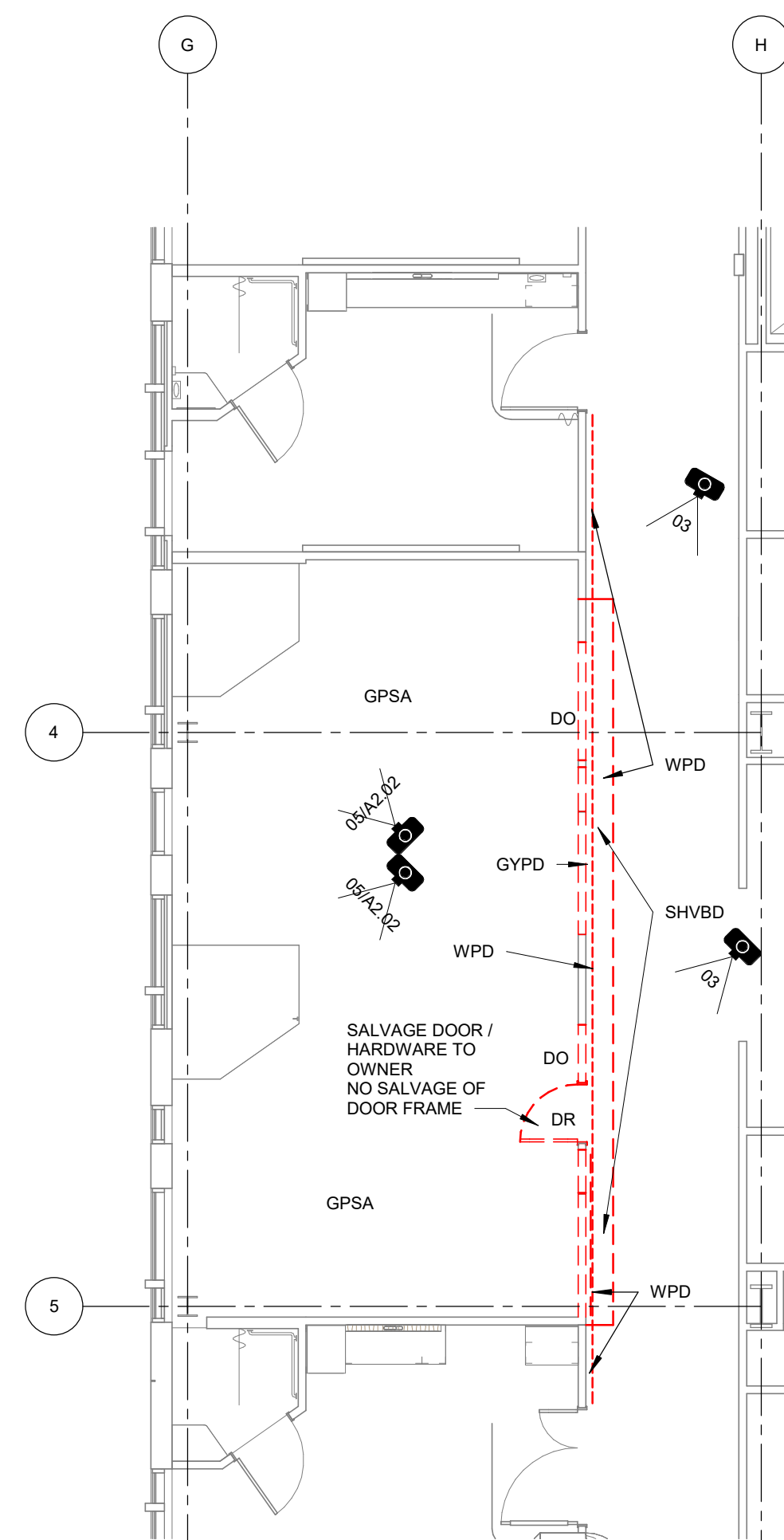
--- INDICATES ELEMENTS TO BE REMOVED

**REFLECTED CEILING DEMOLITION NOTES**

- SYMBOL W/ NUMBER INDICATES PHOTO FOR REFERENCE. REFER TO CORRESPONDING PICTURE NUMBER ON SHEET.

- CEILING DEMOLITION SHALL INCLUDE ALL SUPPORT STRUCTURE, INCLUDING WIRES BRIDGING ELEMENTS TO STRUCTURE, ETC.
- OWNER SHALL REMOVE ALL EQUIPMENT AND ACCESSORIES FROM AREAS BEING REMODELED. THIS INCLUDES, BUT IS NOT LIMITED TO, MEDICAL EQUIPMENT, CHART HOLDERS, SIGNAGE, BROCHURE RACKS, TOILET ACCESSORIES, PICTURES, COMPUTER EQUIPMENT, ETC.
- ITEMS TO BE SALVAGED ARE DESIGNATED ON THE PLANS OR AS NOTED BELOW. (REFER TO UTILITY DRAWINGS FOR ITEMS UNDER VARIOUS DISCIPLINES TO BE SALVAGED)
- BULKHEAD / FURRED DOWN AREA (S) DEMOLITION NOTED SHALL INCLUDE ALL FRAMING / SUPPORT STRUCTURE, BRIDGING ELEMENTS TO STRUCTURE, ETC.

ANY DAMAGE OCCURRING TO THE CEILING GRID PANELS IN THE CORRIDOR DURING DEMOLITION MUST BE REPAIRED OR REPLACED TO MATCH EXISTING CONDITIONS.

**01 LEVEL 3 LDR DEMO PLAN**  
1/8" = 1'-0"**DEMOLITION KEYED NOTES** (GENERIC FOR ENTIRE PROJECT)

- ACPD** - ACOUSTICAL PANEL CEILING SYSTEM TO BE REMOVED.
- CBD** - CARPET WALL BASE IN THIS ROOM / AREA SHALL BE REMOVED.
- CGD** - CORNER GUARD / ASSOCIATED RETAINER SHALL BE REMOVED. SALVAGE FOR RE-INSTALLATION.
- DO** - NEW DOOR OPENING LOCATION IN EXISTING WALL. COORDINATE WITH REMODEL DRAWINGS.
- DR** - DOOR & FRAME TO BE REMOVED. ONLY NOTED WHERE WALL IS TO REMAIN (UNLESS NOTED OTHERWISE).
- GPSSA** - GYPSUM BOARD REMOVAL ON WALLS IN THIS ROOM AS NECESSARY FOR UTILITY WORK IN WALL CAVITY. COORDINATE EXTENT WITH UTILITY DRAWINGS (NOT ALL LOCATIONS ARE NOTED).
- GYPSW** - GYPSUM BOARD SHALL BE REMOVED FROM ENTIRE WALL FRAMING TO REMAIN.
- NE** - NO EXISTING FLOORING IN THIS AREA.
- NE** - NO EXISTING BASE IN THIS AREA.
- MCW** - MILLWORK BASE / WALL / TALL CABINETS AND COUNTERTOP TO BE REMOVED.
- RBD** - RUBBER BASE IN THIS ROOM SHALL BE REMOVED.
- SHVD** - SHEET VINYL FLOORING WITH ASSOCIATED RUBBER BASE IN THIS AREA TO BE REMOVED. COORDINATE EXTENT AT EXISTING ROOMS WITH REMODEL FINISH PLAN.
- SHVD AC** - SHEET VINYL FLOOR / BASE DEMOLITION AS NECESSARY FOR INSTALLATION OF NEW CABINETS / BASE.
- SHVDG** - SHEET VINYL FLOORING, WITH INTEGRAL COVERED BASE, TO BE REMOVED IN THIS AREA.
- TILE** - PORCELAIN TILE FLOOR SHALL BE REMOVED.
- WBD** - WINDOW & FRAME TO BE REMOVED.
- WPD** - WALL PROTECTION MATERIAL (EXTENT INDICATED) TO BE REMOVED. REMOVE GYP BD BEHIND WALL PROTECTION BACK TO STUD FRAMING (FULL HEIGHT OF WALL PROTECTION) WHERE EXISTING FLOORING IS TO REMAIN. REMOVE GYP BD FROM ABOVE FLOORING BASE TO ABOVE WALL PROTECTION.
- WPTD** - WALL PROTECTION TO REMAIN. AT DOOR OPENING WALL SHALL BE DEMOLISHED FROM THE INSIDE, AND WALL CUT AS NECESSARY TO MAINTAIN THE WALL PROTECTION SIDE OF THE WALL. COORDINATE WITH KEYED NOTE "NO WPT" ON REMODEL PLAN.
- WLD** - WALL DEMOLITION AS NECESSARY FOR CHANGE OF RETURN AIR GRILLE LOCATION.
- WVD** - ENTIRE WALL TO BE REMOVED (CALLED OUT FOR CLARIFICATION. NOT ALL WALLS REMOVED ARE CALLED OUT).
- AWPD** - ACOUSTICAL WALL PANELS AND MOUNTING CLIPS SHALL BE REMOVED FROM THIS ROOM. SALVAGE FOR RE-INSTALLATION.

**DEMOLITION LEGEND**

- INDICATES WALLS TO BE REMOVED (WALLS EXTEND TO ABOVE CEILING TYP).
- MILLWORK, DOORS, ETC. TO BE REMOVED. TYP SEE DEMOLITION NOTES FOR SPECIFIC INFORMATION CONCERNING ITEMS INDICATED.
- DOOR AND/OR FRAME TO BE REMOVED. SEE DEMOLITION NOTES FOR SPECIFIC INFORMATION ABOUT OPENINGS.

**DEMOLITION NOTES**

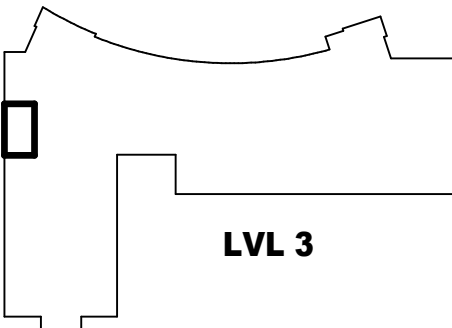
- SYMBOL W/ NUMBER INDICATES PHOTO FOR REFERENCE. REFER TO CORRESPONDING PICTURE NUMBER ON SHEET.

- DEMOLITION SHALL INCLUDE REMOVAL OF ALL FLOORING ADHESIVES DOWN TO CONCRETE SLAB FINISH, AND PREPARED FOR FINAL FLOOR FINISH.
- OWNER SHALL REMOVE ALL EQUIPMENT AND ACCESSORIES FROM AREAS BEING REMODELED. THIS INCLUDES, BUT IS NOT LIMITED TO, MEDICAL EQUIPMENT, CHART HOLDERS, SIGNAGE, BROCHURE RACKS, TOILET ACCESSORIES, PICTURES, COMPUTER EQUIPMENT, ETC. (REFER TO UTILITY DRAWINGS FOR ITEMS UNDER VARIOUS DISCIPLINES TO BE SALVAGED).
- ITEMS TO BE SALVAGED ARE DESIGNATED ON THE PLANS OR AS NOTED BELOW.
- DEMOLITION SHALL FOLLOW OWNER'S ICRA REQUIREMENTS. TEMPORARY WALLS SHALL SEAL AGAINST EXISTING FLOOR / ROOF DECK.
- REFER TO FINISH PLAN FOR FLOORING REMOVAL EXTENTS WHERE PARTIAL REMOVAL IS REQUIRED.

**LAYTON HOSPITAL  
MISC PROJECTS**

8/15/2024

## KEY PLAN



LVL 3

REVISION NO. DESCRIPTION DATE

HKS PROJECT NUMBER

**26404.000**

DATE

**8/15/2024**

ISSUE

**CONSTRUCTION  
DOCUMENTS**

SHEET TITLE

**LDR DEMOLITION  
PLANS**

SHEET NO.

**A2.01**



## ARCHITECT

HKS ARCHITECTS, INC.  
222 SOUTH MAIN, SUITE 230  
SALT LAKE CITY, UT 84101

## STRUCTURAL ENGINEER

REAVELEY ENGINEERS & ASSOCIATES  
675 EAST 500 SOUTH, SUITE 400  
SALT LAKE CITY, UTAH 84102

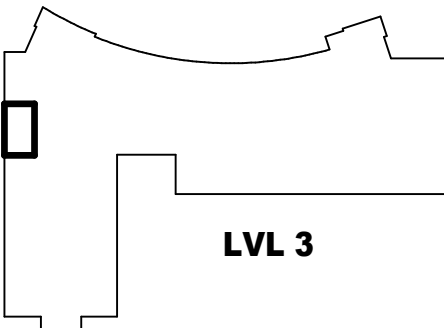
## MECHANICAL ENGINEER

VAN BOERUM & FRANK ASSOCIATES, INC.  
181 EAST 5600 SOUTH, SUITE 130  
MURRAY, UTAH 84107

## ELECTRICAL ENGINEER

SPECTRUM ENGINEERS, INC.  
324 SOUTH STATE STREET, SUITE 400  
SALT LAKE CITY, UTAH 84111LAYTON HOSPITAL  
MISC PROJECTS

KEY PLAN

REVISION  
NO. DESCRIPTION DATE

HKS PROJECT NUMBER

26404.000

DATE

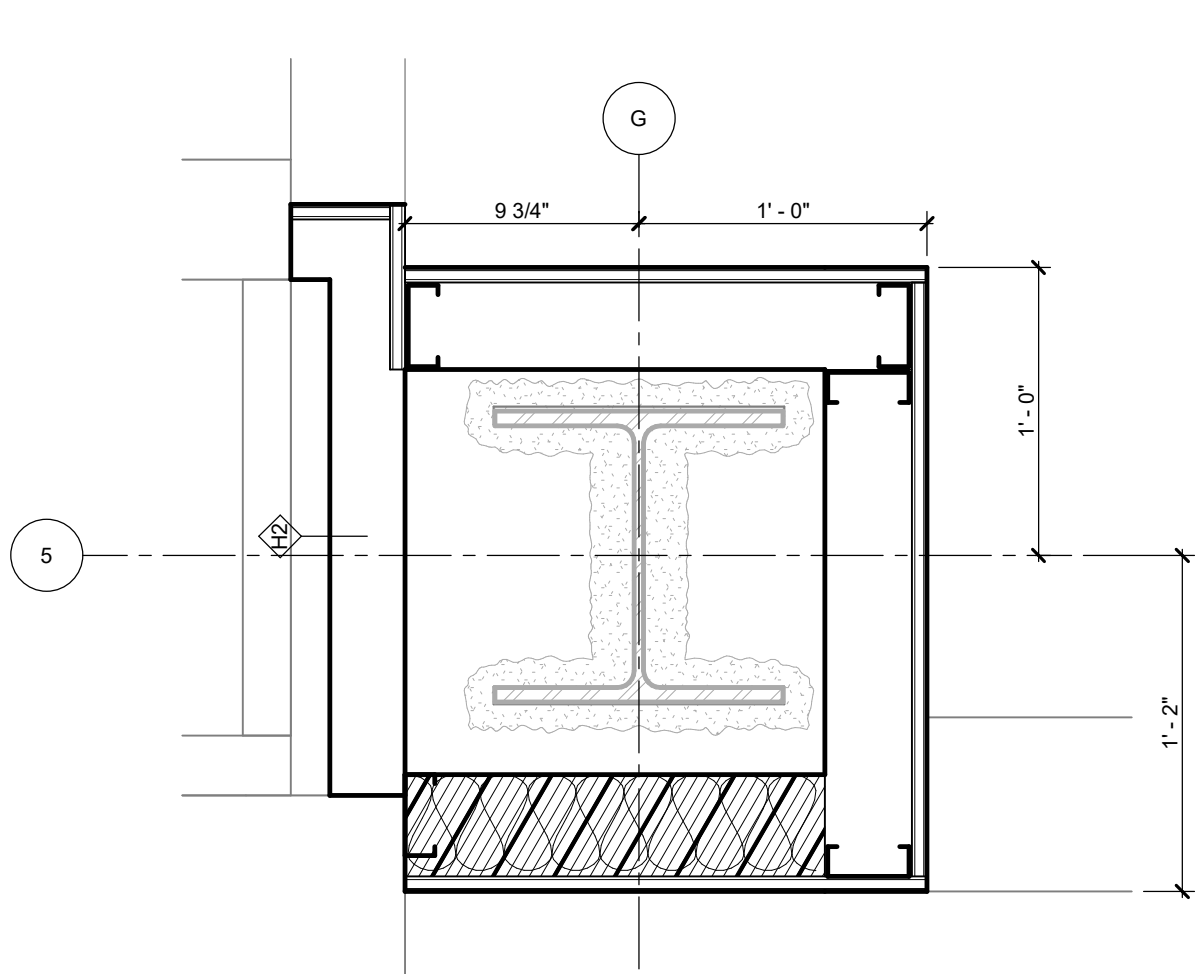
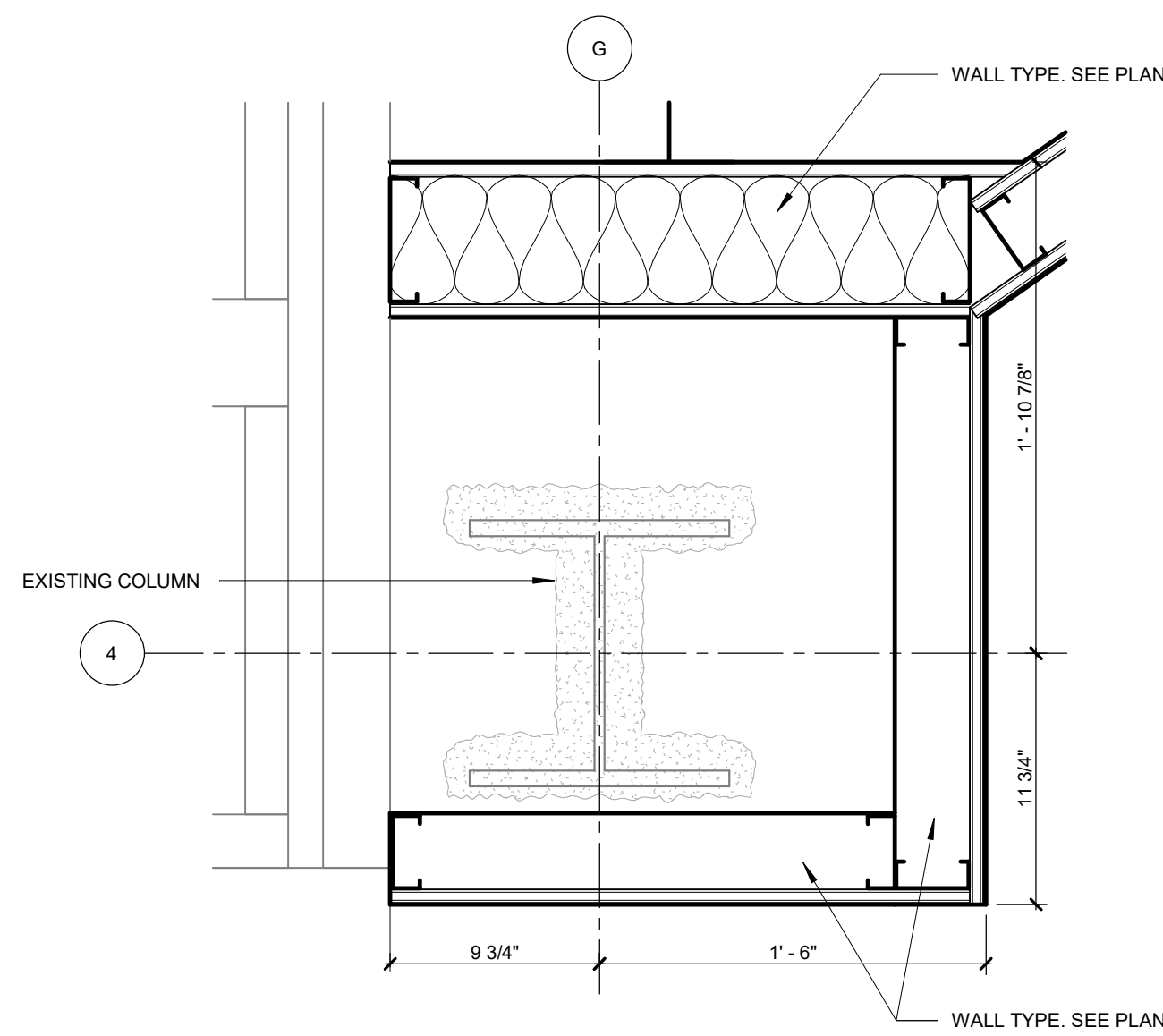
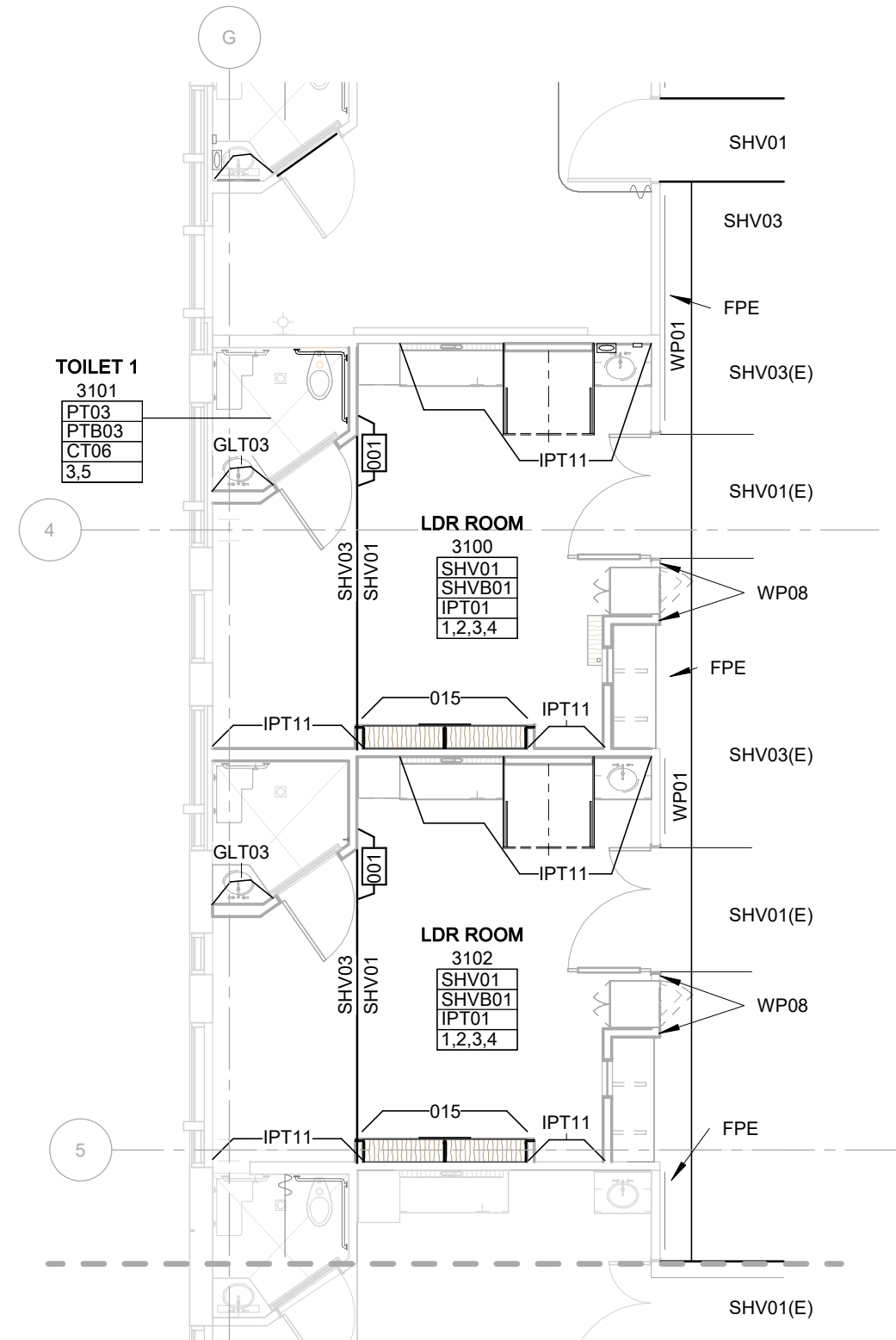
8/15/2024

ISSUE

CONSTRUCTION  
DOCUMENTS  
SHEET TITLE  
LDR REMODEL  
PLANS

SHEET NO.

A2.02

05 LDR EXISTING  
1/4" = 1'-0"METAL WINDOW SILLS  
TO REMAIN08 LDR COLUMN WRAP DETAIL 1  
1 1/2" = 1'-0"09 LDR COLUMN WRAP DETAIL 2  
1 1/2" = 1'-0"04 LEVEL 3 LDR REMODEL FINISH PLAN  
1/8" = 1'-0"

## INTERIOR MATERIALS LEGEND

CPT	CARPET TILE
CT	CERAMIC TILE
PT	PORCELAIN TILE
CTB	CERAMIC TILE BASE
PTB	PORCELAIN TILE BASE
IP101	INTERIOR HOLLOW METAL DOORS
SHV	SHEET VINYL FLOORING
SHVB	SHEET VINYL BASE
WP	WALL PROTECTION ASSEMBLY

## LDR INTERIOR FINISH PLAN NOTES

- 001 ALIGN FLOOR TRANSITION WITH ADJACENT WALL OR EDGE OF MILLWORK  
015 REFER TO ENLARGED ROOM SHEETS A2.80-A2.91 FOR HEADWALL & FOOTWALL ELEVATIONS TO SHOW DESIGN & FINISHES.

## LDR INTERIOR FINISH REMARKS

- MULTIPLE FLOOR FINISHES IN THIS AREA. REFER TO PLANS FOR MORE INFORMATION.
- MULTIPLE BASE FINISHES IN THIS AREA. REFER TO PLANS AND ELEVATIONS FOR MORE INFORMATION.
- MULTIPLE WALL FINISHES IN THIS AREA. REFER TO PLANS AND ELEVATIONS FOR MORE INFORMATION.
- INTEGRAL COVE BASE IN THIS AREA. (IF COVED BASE - FIELD VERIFY W/ EXISTING)
- EPOXY PAINT TO BE USED AT THIS LOCATION.
- EPOXY PAINT TO BE USED AT THIS LOCATION ABOVE WALL FINISH UNLESS NOTED OTHERWISE.
- PORCELAIN TILE TO BE INSTALLED FULL HEIGHT AT WET WALL AND BEHIND SINK LOCATIONS.
- PORCELAIN TILE TO BE INSTALLED 6" ABOVE PORCELAIN TILE COVE BASE CAPPED WITH METAL TRIM PIECE (MT2) AT ALL OTHER WALLS. TILE TO BE INSTALLED IN STACKED INSTALLATION.
- INTEGRAL COVED BASE SHALL BE 6" HIGH.
- ALL PENETRATIONS IN THIS AREA INCLUDING LIGHTING, HVAC, PLUMBING, ETC THROUGH CEILINGS OR WALLS MUST BE SEALED.

## INTERIOR MATERIALS LEGEND

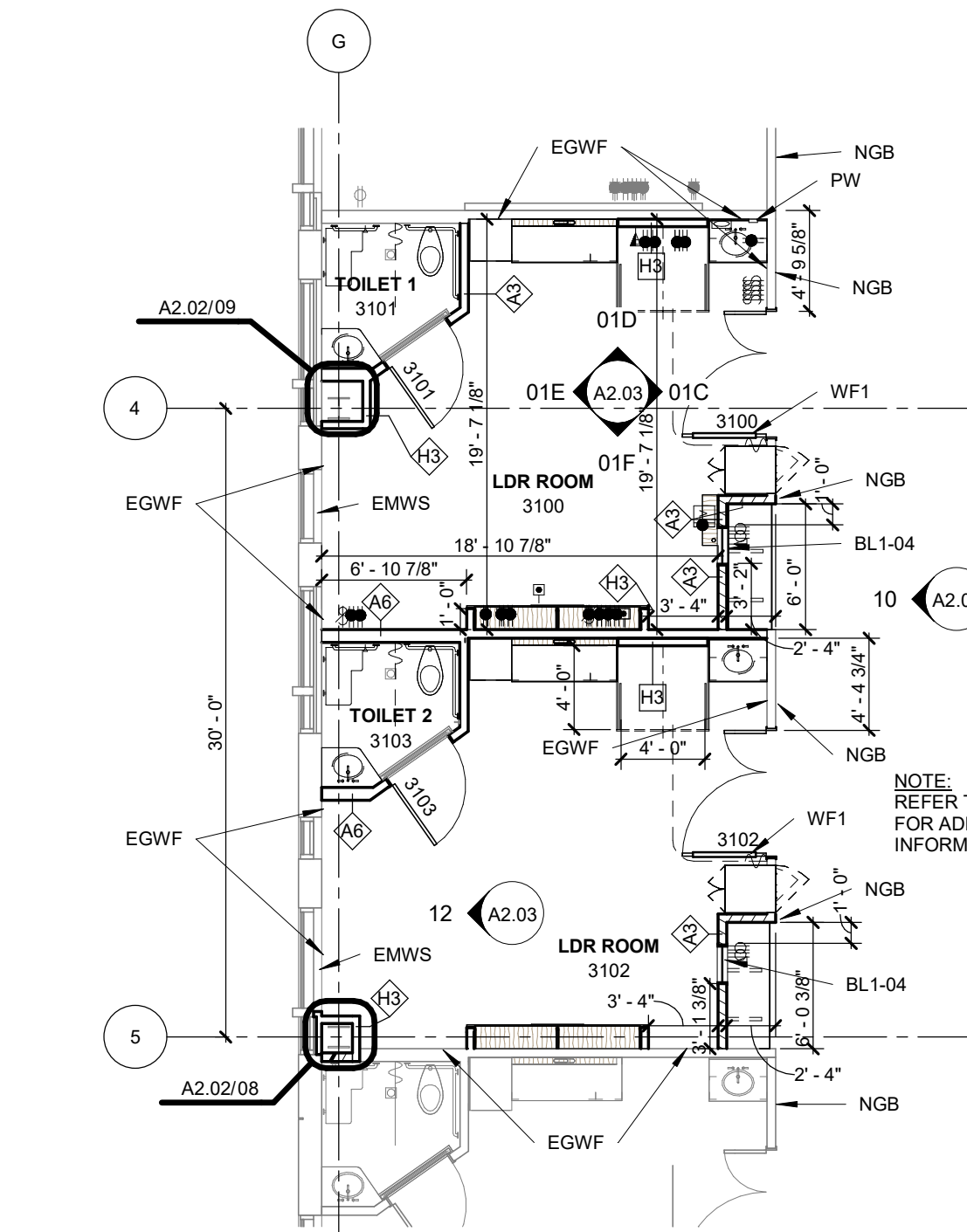
ACT	ACOUSTICAL CEILING TILE
AWP	ACOUSTICAL WALL PANEL
CB	CARPET BASE
CC	CUBICAL CURTAIN
CG	CORNER GUARD
CLC	COLUMN COVER
CPT	CARPET TILE
CR	CRASH RAIL
CT	CERAMIC TILE
CTB	CERAMIC TILE BASE
DG	DECORATIVE GLAZING
DP	DECORATIVE PANEL
EG	ENTRANCE GRILL
EPB	EPOXY BASE
EPT	EPOXY PAINT
FL	FILM
FWC	FABRIC WALL COVERING
GL	GLAZING
GLT	GLASS TILE
GYP	GYPSUM WALL BOARD
HR	HAND RAIL
IP1	INTERIOR PAINT
IP1	INTERIOR PAINT
MT	METAL TRIM
MTG	METAL TRIM
CHR	ORNAMENTAL HANDRAILRAILINGS
PE	PASSENGER ELEVATOR
PL	PLASTIC LAMINATE
PT	PORCELAIN TILE
PTB	PORCELAIN TILE BASE

## INTERIOR MATERIALS LEGEND

QT	QUARRY TILE
QTB	QUARRY TILE BASE
QZ	QUARTZ SURFACE
RB	RESILIENT BASE
RS	ROLLER SHADE
SC	SEALED CONCRETE
SDG	SUSPENDED DECORATIVE GRID
SDT	STATIC DISSIPATIVE TILE
SE	SERVICE ELEVATOR
SHR	SHEET RUBBER FLOORING
SHRB	SHEET RUBBER BASE
SHV	SHEET VINYL FLOORING
SHVB	SHEET VINYL BASE
SS	STAINLESS STEEL
SSB	STAINLESS STEEL BASE
SSF	SOLID SURFACE FABRICATIONS
ST	STONE
SWP	SHEET WALL PROTECTION
TC	TRAFFIC COATING
TF	TACKABLE FABRIC
TLP	TOILET PARTITION
TZ	TERRAZZO
TZB	TERRAZZO BASE
UP	UPHOLSTERY
VCT	VINYL COMPOSITION TILE
WC	WALL COVERING
WDC	WOOD CEILING
WDS	WOOD SLAT WALL
WM	WALK OFF MAT
WP	WALL PROTECTION ASSEMBLY

## INTERIOR TYPICAL FINISHES

IP101	HOLLOW METAL FRAMES
IP101	GYPSUM BOARD HORIZONTAL SOFFIT SURFACES AND CEILINGS
IP101	INTERIOR HOLLOW METAL DOORS
IP106	EXPOSED DUCTWORK
IP106	REFINISHED GRILLES/DIFFUSERS ON EXPOSED DUCTWORK
WD01	INTERIOR WOOD DOORS
WD01	VERTICAL CASEWORK/MILLWORK TO BE PLASTIC LAMINATE, UNLESS NOTED OTHERWISE
P101	HORIZONTAL COUNTERTOPS TO BE SOLID SURFACE UNLESS NOTED OTHERWISE
SSP01	GYPSUM BOARD WALLS, UNLESS NOTED OTHERWISE

01 LEVEL 3 LDR REMODEL PLAN  
1/8" = 1'-0"

## FLOOR PLAN KEYED NOTES (GENERIC FOR ENTIRE PROJECT)

- NDL** - NEW DOOR LOCATION IN EXISTING WALL. MODIFY WALL FRAMING AS NECESSARY FOR NEW DOOR OPENING. PATCH ADJACENT WALL MATERIALS AS NECESSARY.
- NDLWP** - NEW DOOR LOCATION IN EXISTING WALL PROTECTION. DESIGN INTENT IS TO MAINTAIN THE EXISTING WALL PROTECTION. MODIFY THE FRAMING FROM THE INTERIOR WALL TO MAINTAIN THE WALL PROTECTION WALL GYPSUM BOARD, ETC.
- CR** - CARD READER LOCATION, SHOWN FOR PLAN REFERENCE / COORDINATION
- CRADD** - CARD READER LOCATION THAT ACTIVATES AN AUTO DOOR OPERATOR
- AUTO (PUSH)** - AUTO DOOR OPERATOR ACTIVATION LOCATION (PUSH PLATE)
- WANDZ** - AUTO DOOR OPERATOR HAND SWIPE OPERATOR LOCATION
- WST** - WALL TYPE STUD FRAMING INDICATED SHALL BE SET DIRECTLY AGAINST FACE OF ADJACENT WALL ASSEMBLY
- WSS** - WALL TYPE STUD FRAMING INDICATED SHALL BE SET 3/4" AWAY FROM FACE OF ADJACENT WALL ASSEMBLY
- EQS** - FACE OF STUD
- IGWR** - DESIGNATIONS IN ROOMS INDICATE GYPSUM BOARD HAS BEEN REMOVED FOR DEMOLITION WORK ON WALLS IN THIS ROOM AND SHALL BE PATCHED TO MATCH ADJACENT CONSTRUCTION. COORDINATE EXTENT WITH DEMOLITION DRAWINGS
- PW** - LOCATIONS INDICATE WALL AREAS AFFECTED BY DEMOLITION OR REMODEL AND SHALL BE PROVIDED WITH NEW MATERIALS TO INTEGRATE INTO EXISTING ADJACENT MATERIALS AND FINISHES. COORDINATE WITH UTILITY DRAWINGS. NOT ALL LOCATIONS ARE INDICATED
- NGR** - DESIGNATIONS ARE LOCATIONS WHERE GYPSUM BOARD HAS BEEN REMOVED FROM METAL STUD FRAMING. PROVIDE NEW GYPSUM BOARD AND FINISH AT THESE LOCATIONS
- AT** - AT NEW TILE SUBSTRATES PROVIDE APPROPRIATE TILE BACKER GYPSUM BOARD
- CT** - CONTROL JOINT LOCATION IN GYPSUM BOARD WALL. SEE A3.12 CONTROL JOINTS AT DOOR FRAMES FOR JOINT LOCATIONS NOTED AT DOOR OPENINGS
- EE** - ELECTRICAL FLOOR BOX. REFER TO EQUIPMENT AND FURNISHINGS PLANS FOR LOCATIONS IN RELATION TO THOSE ELEMENTS
- WLL** - WALL INDICATED LINES UP WITH ADJACENT COLUMN ENCLOSURE WALL, OR OTHER ADJACENT WALL CONSTRUCTION
- PHW** - PARTIAL HEIGHT WALL (NO TYPE WALL) - SEE A3.07
- RE** - RECESSED FLOOR SCALE LOCATION. FILL FRAME AFTER REMOVAL OF SCALE WITH 4,000 PSI CONCRETE
- EGWF** - EXISTING GYPSUM BOARD HAS A LEVEL 2 FINISH. COMPLETE FINISH ON WALL TO A LEVEL 5 FINISH IN THE CONFERENCE ROOMS AND LEVEL 4 FINISH IN OTHER ROOMS
- EMWS** - EXISTING METAL WINDOW SILL. INTEGRAL TO THE EXTERIOR GLAZING SYSTEM SHALL REMAIN. WORK AROUND SILL AT JAMBS (SEAL SILL TO VERTICAL GYP BD AS PART OF FINISH)
- TE** - DESIGNATION NEXT TO CIRCLE INDICATES AN ELECTRICAL FLOOR BOX LOCATION. DIMENSION IS TO CENTERLINE OF BOX
- EBF** - EXISTING ELECTRICAL FLOOR BOX OPENING. FILL WITH CONCRETE TO MEET FLOOR FIRE RATING REQUIREMENTS. NOT ALL BOXES MAY BE SHOWN
- WIDZ** - INFILL WALL AREA WHERE WINDOW HAS BEEN REMOVED. MATCH ADJACENT WALL CONSTRUCTION (NOTED). INFILL SHOULD BE TO CEILING LEVEL WITH EXISTING WALL CONSTRUCTION ABOVE
- WNY** - NEW WALL INFILL BETWEEN EXISTING WALL AREAS. WALL SHALL BE FULL HEIGHT. WALL TYPE AS INDICATED. INTEGRATE WALL MATERIALS INTO ADJACENT EXISTING MATERIALS

## FLOOR PLAN NOTES (GENERIC FOR ENTIRE PROJECT)

- PARTITIONS SHALL BE AS TAGGED. REFER TO SHEET A3.08 FOR PARTITION INFORMATION. DIMENSIONS ARE TO FACE OF GYPSUM BOARD, UNLESS NOTED OTHERWISE
- WALL TYPES INDICATED WITH 'E' BESIDE TYPE ARE EXISTING WALLS. WITH WALL TYPE INDICATED
- EQUIPMENT AND ACCESSORY INFORMATION. SEE SHEET A2.30 AND A2.30. ITEMS WHICH REQUIRE WALL BACKING ARE INDICATED ON THAT SHEET
- DESIGNATION OR SEGMENTS OF THIS DESIGNATION. INDICATES INTERIOR ELEVATIONS OF MILLWORK OR OTHER CONDITIONS IN THIS ROOM. SEE SHEETS A3.51, A3.52 AND A3.53 FOR ELEVATIONS
- PROVIDE ACOUSTIC PUTTY PAKS AT WALL PENETRATIONS IN ALL SOUND RATED PARTITIONS - SEE A3.07/10
- PATCH WALLS WHERE DISTURBED BY REMOVAL OF SHEET VINYL BASE, CABINET REMOVAL, UTILITY WORK, ETC.
- WHERE SPRAYED ON FIREPROOFING IS DISTURBED WITH NEW WORK ABOVE CEILING, FIREPROOFING SHALL BE PATCHED / RESTORED TO ORIGINAL REQUIREMENTS
- INTEGRAL SINKS NOTED ON INTERIOR ELEVATIONS SHALL BE PROVIDED AS PART OF THE SOLID SURFACE COUNTERTOP FABRICATION. COORDINATE WITH PLUMBING DRAWINGS

## REFLECTED CEILING NOTES / KEYED NOTES

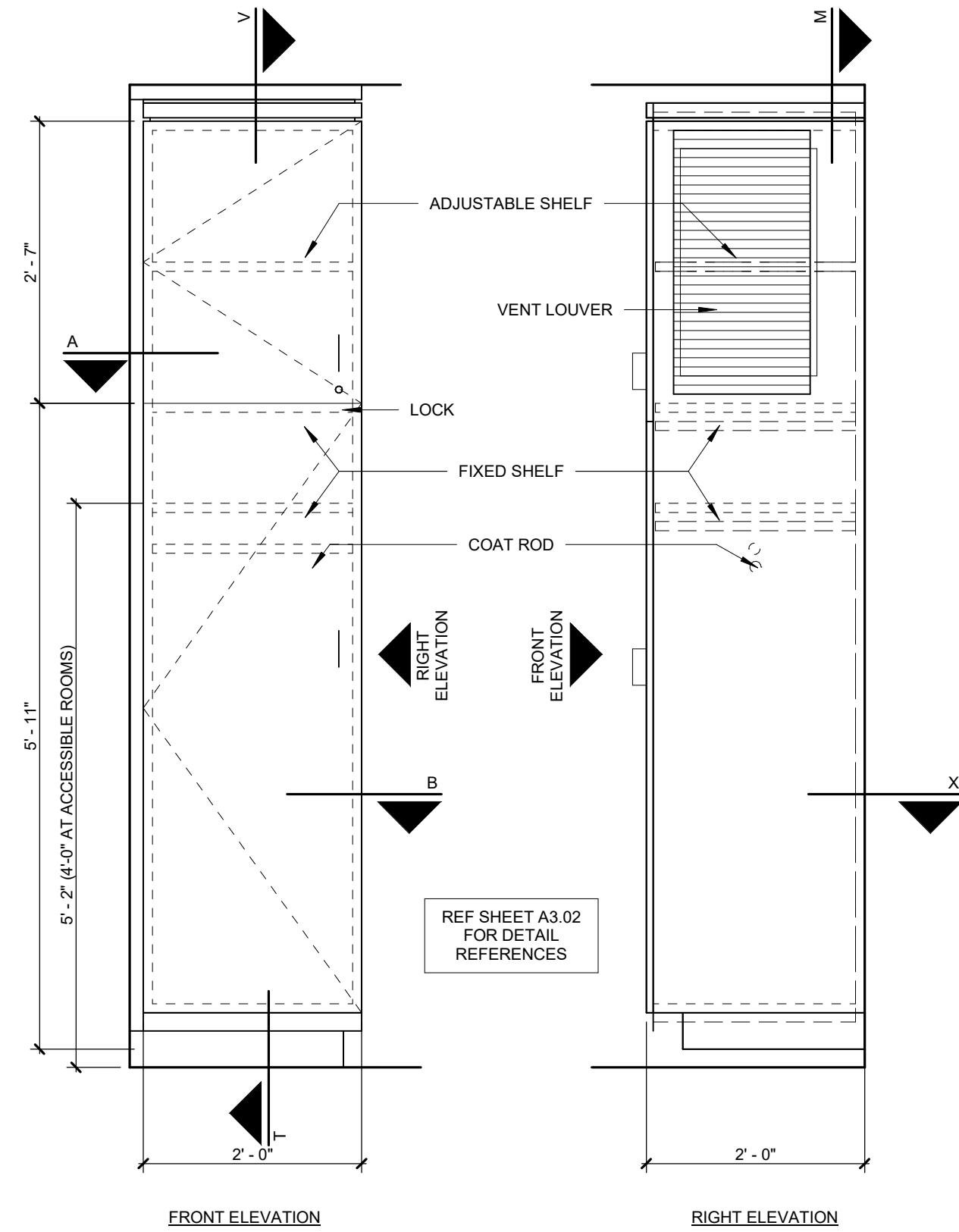
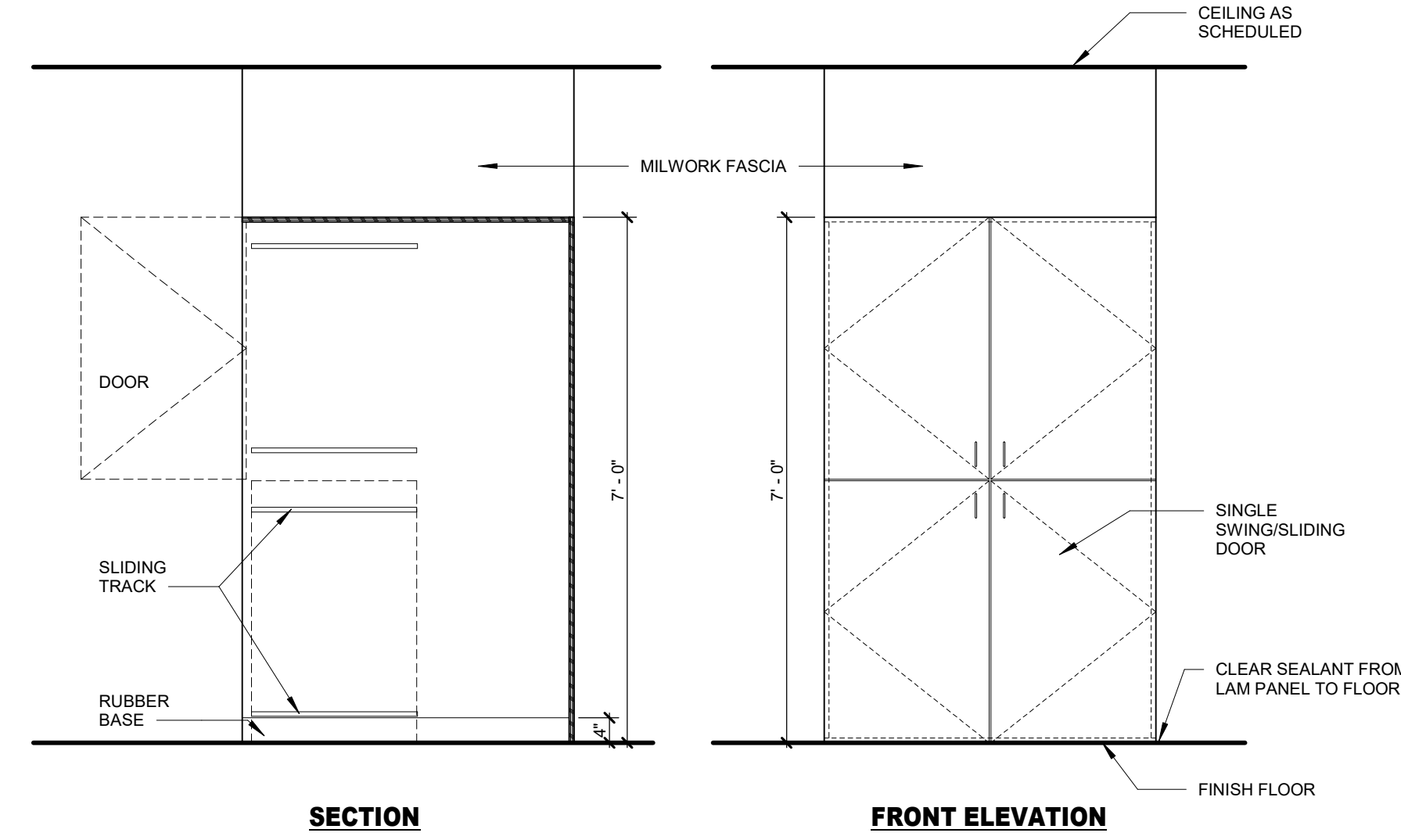
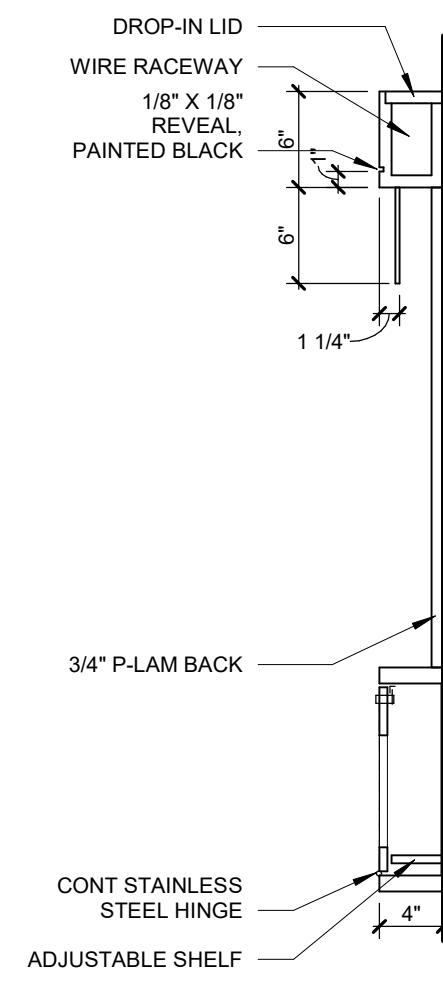
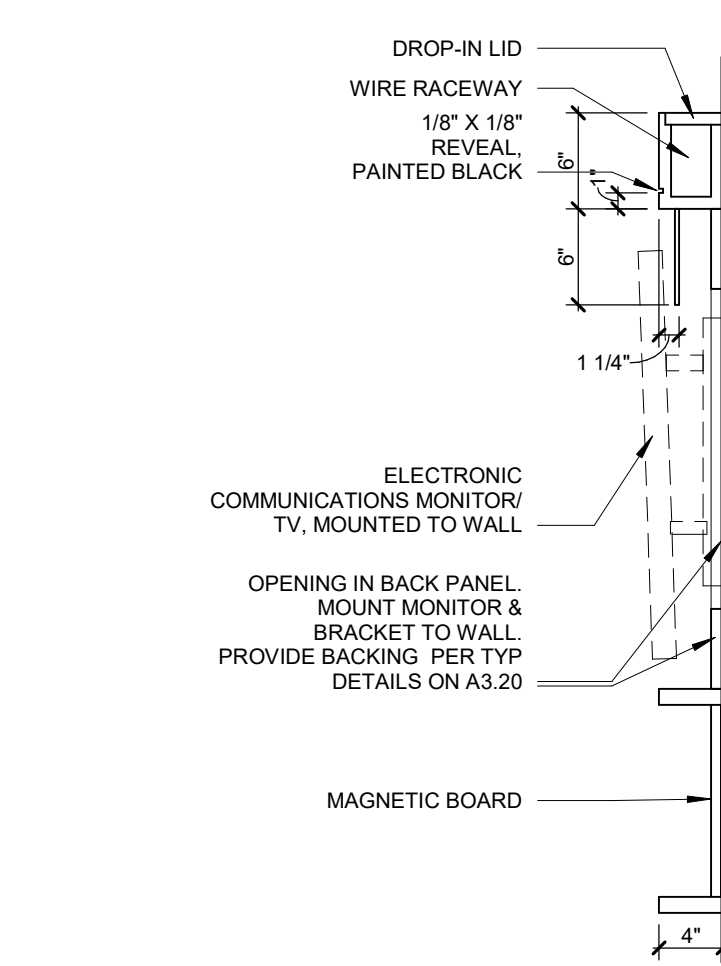
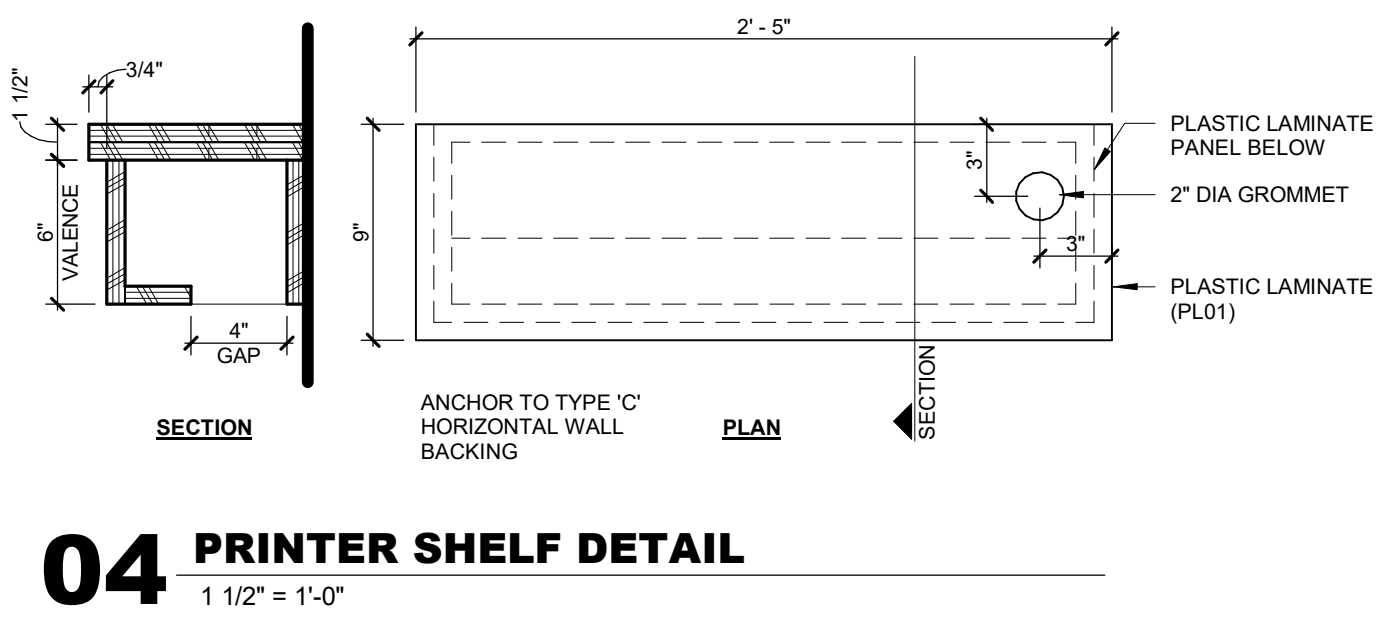
1. CEILING HEIGHTS ARE AS INDICATED BY - #48"
2. BK - CEILING BULKHEAD. SEE A3.04
3. BK2 - FURR DOWN. SEE A3.04
3. BK3 - FURR DOWN. SEE A3.04
3. WHERE 'ACTD' CEILING PANELS ARE PROVIDED, THE CEILING GRID SHALL BE THE HOT DIPPED GALVANIZED STEEL SUSPENSION SYSTEM
4. IN THE CASE OF MINOR DISCREPANCIES BETWEEN MEP AND ARCHITECTURAL DOCUMENTS IN THE LOCATION OF CEILING MOUNTED COMPONENTS, THE ARCHITECTURAL REFLECTED CEILING PLAN SHALL GOVERN. IN THE CASE OF MAJOR DISCREPANCIES, THE ARCHITECT SHALL BE NOTIFIED AS SOON AS THE DISCREPANCY IS DISCOVERED PRIOR TO PROCEEDING WITH THE WORK.
5. LIGHTS, DIFFUSERS, EXIT SIGNS, SMOKE DETECTORS, SPEAKERS, STROBES AND MISCELLANEOUS DEVICES SHALL BE CENTERED IN THE CEILING TILE IN WHICH THEY OCCUR, UNLESS NOTED OR INDICATED OTHERWISE.
6. PAINT ACCESS DOORS WITH SAME PAINT MATERIALS AS NOTED FOR THE CEILING FINISH
7. REFER TO SHEET A3.05, 'INTERIOR DESIGN SELECTION SUMMARY' FOR CEILING MATERIALS NOTED
- ZSP** - CEILING STARTING POINT
- ZSE** - DESIGNATES LOCATIONS WHERE THE WALL OR TALL CABINETS MILLWORK FASCIA EXTENDS TO CEILING (NOTED FOR REFERENCE / COORDINATION)
- PC** - PATCH CEILING SYSTEM / PROVIDE NEW CEILING SYSTEM (INTEGRATE INTO EXISTING SYSTEM), WHERE DISTURBED BY DEMOLITION OR REMODEL WORK
- ETC** - INDICATES EXISTING CEILING / MATERIALS TO REMAIN
- NC** - NEW CEILING SYSTEM (SHOWN IN EXIST AREAS TO CLARIFY NEW CONSTRUCTION) NOTE THAT NEW CEILING SYSTEM HAS ALIGNMENT WITH EXISTING SYSTEM WHERE NO NOTE OCCURS ADJACENT TO AN EXISTING CEILING SYSTEM TO REMAIN
- CC** - CUBICLE CURTAIN / TRACK (OFC)
- PLS** - DESIGNATES A PROCEDURE LIGHT LOCATION. PROVIDE A LIGHT SUPPORT PER SPS04/ B3 - BS AT THIS LOCATION
- NOTE: LIGHT SUPPORTS ARE SHOWN AS THOUGH THERE ARE NO OBSTRUCTING ELEMENTS ABOVE. FIELD VERIFY EXISTING ELEMENTS AND ADJUST WIDTH OF SUPPORTING HORIZONTAL AND VERTICAL SUPPORTS ACCORDINGLY
- CT** - CONTROL JOINT LOCATIONS IN GYPSUM BOARD ASSEMBLIES
- IN** - IN WALLS THAT INTERSECT BULKHEADS
- EBK** - EXISTING GYPSUM BOARD BULKHEAD TO REMAIN
- WLT** - BULKHEAD WALL EDGE LINES UP WITH WALL AT FLOOR - COORDINATE LOCATIONS / DIMENSIONS
- IGCC** - EXISTING GYPSUM BOARD CEILING SYSTEM TO REMAIN
- NSC** - NEW GYPSUM BOARD CEILING SYSTEM
- PCCS** - PATCH EXISTING CEILING SYSTEM WHERE NEW WALL IS PROVIDED
- JVT** - PROVIDE NEW V TRACK / CARRIER (72" LONG) - SEE A3.04/06
- SET 10" OFF HEADWALL, CENTERED ON BED CENTERLINE
- AD2C** - CEILING ACCESS, 24" X 24", GASKETED, PAINT TO MATCH CEILING FINISH

02 LEVEL 3 LDR REMODEL RCP PLAN  
1/8" = 1'-0"03 LEVEL 3 LDR EQUIPMENT PLAN  
1/8" = 1'-0"

## EQUIPMENT NOTES

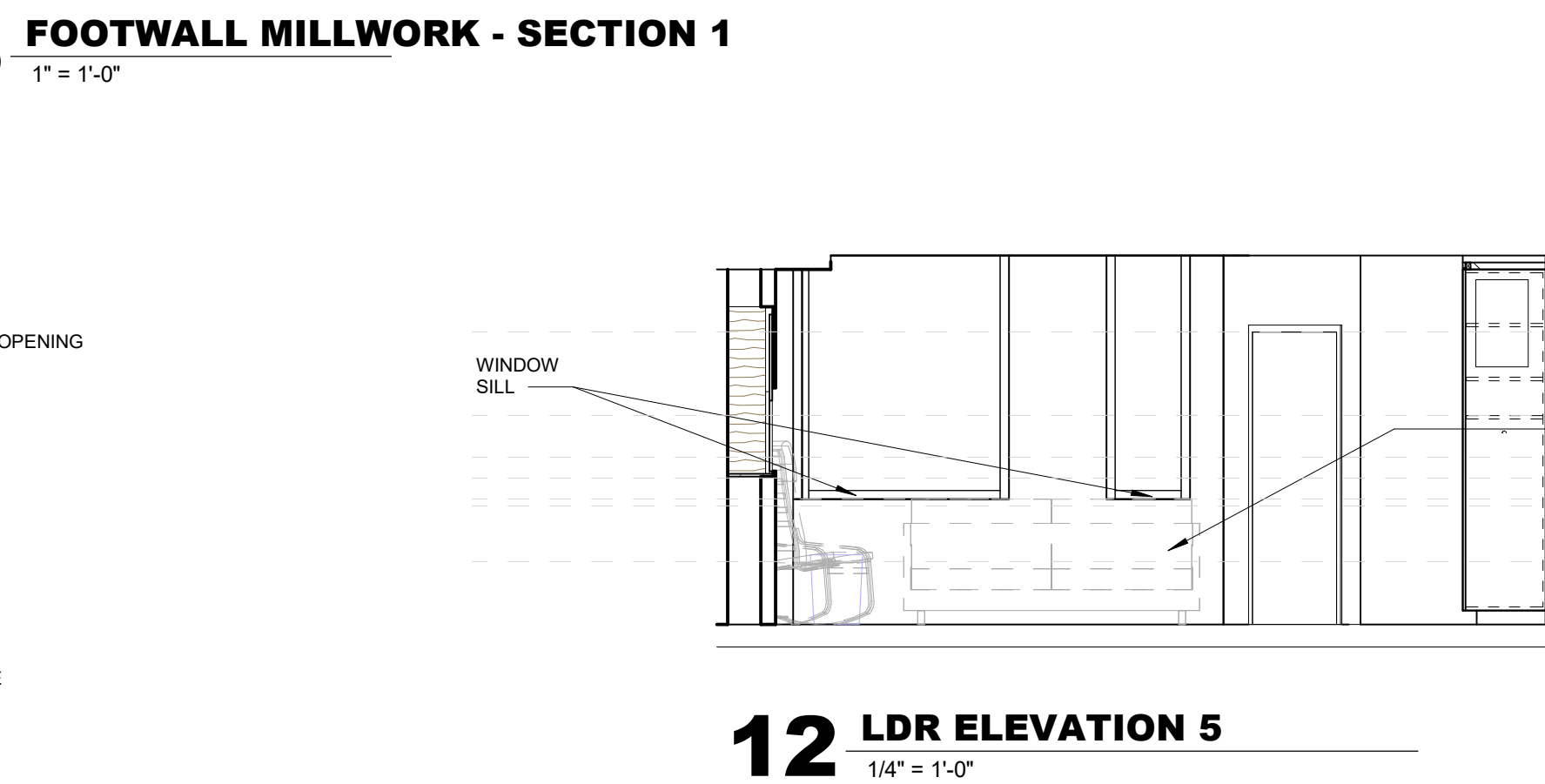
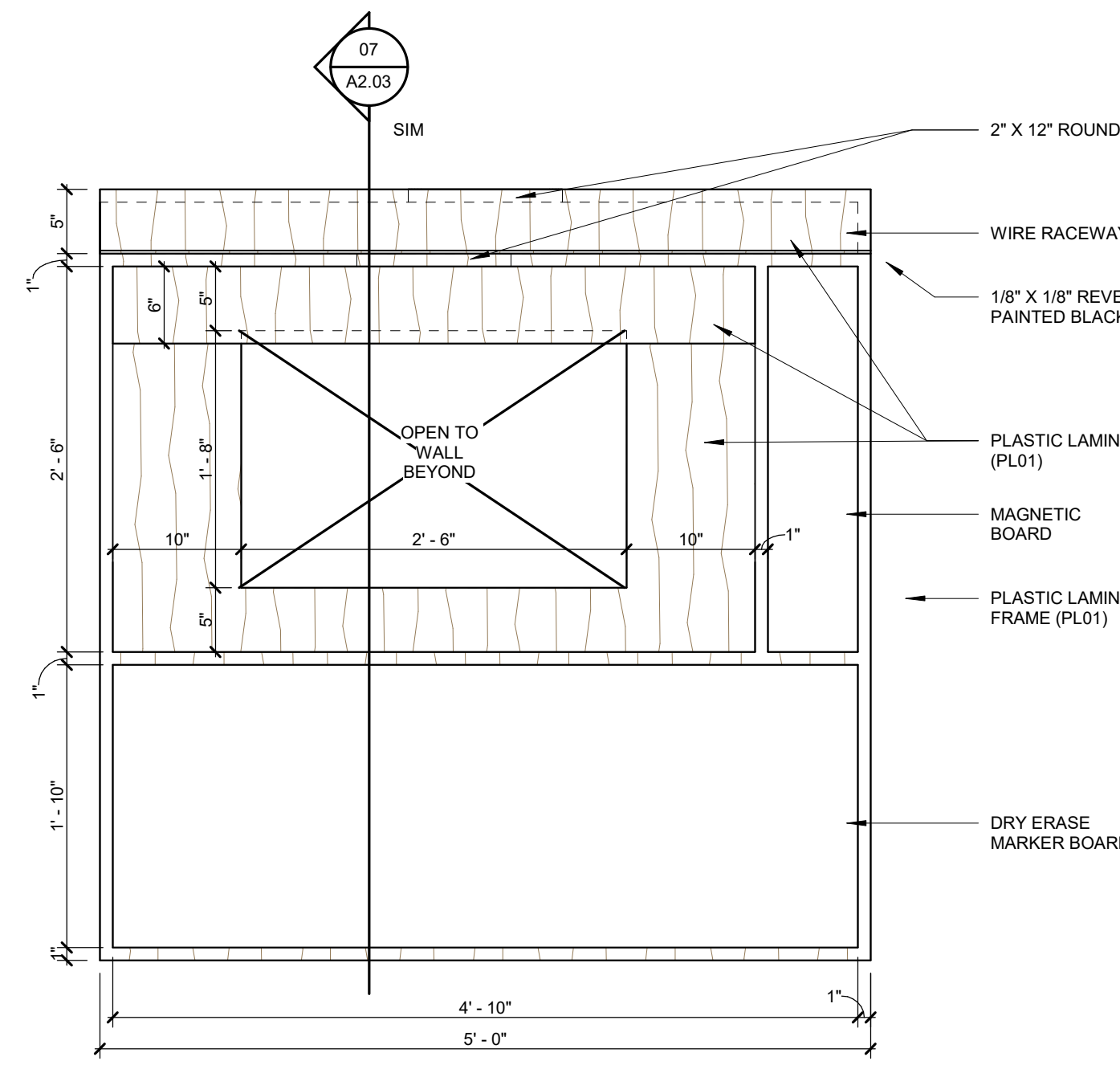
1. REFER TO SHEET EQ.1 FOR EQUIPMENT ITEMS AND RESPONSIBILITIES FOR EQUIPMENT FOR THE LDR AREA



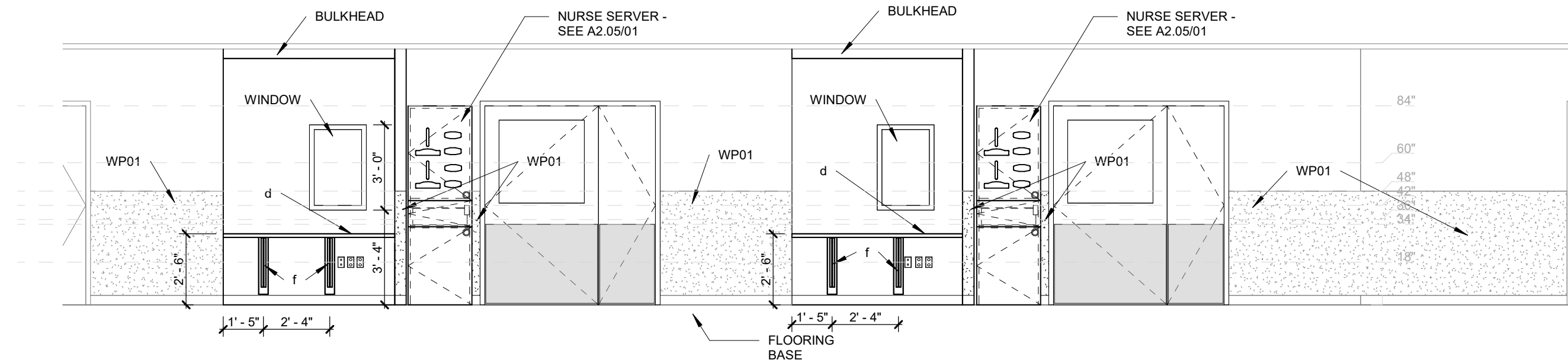


**07 FOOTWALL MILLWORK - SECTION 2**  
1" = 1'-0"

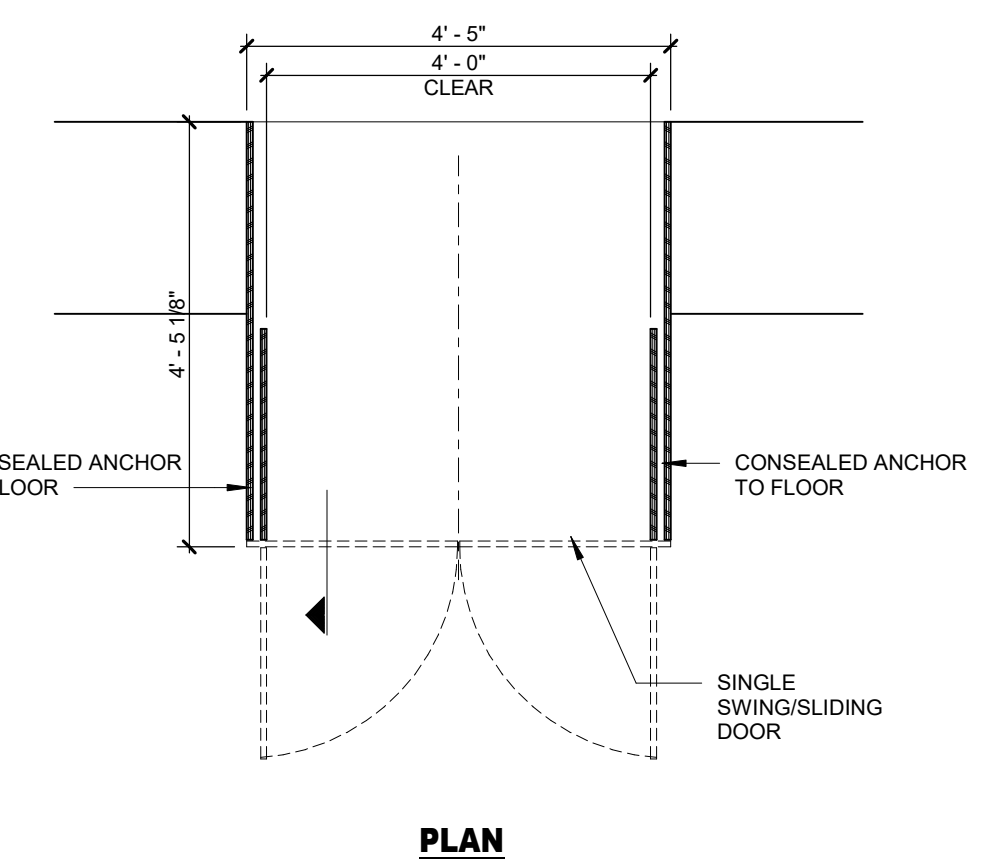
**06 FOOTWALL MILLWORK - SECTION 1**  
1" = 1'-0"



**12 LDR ELEVATION 5**  
1/4" = 1'-0"

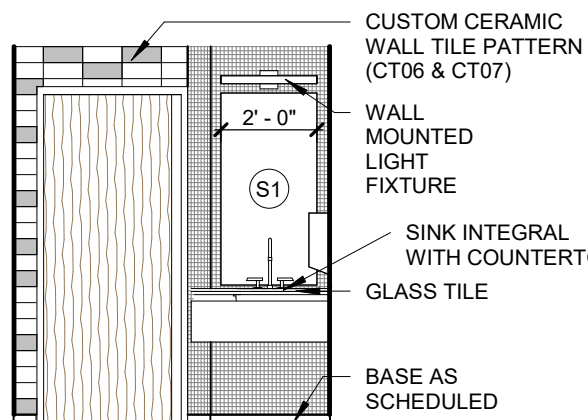


**10 LDR CORRIDOR ELEV**  
1/4" = 1'-0"

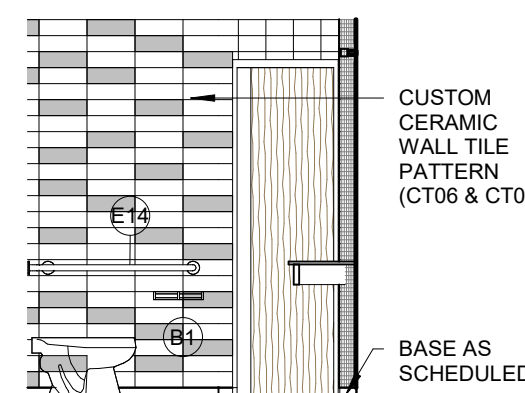


**08 LDR WARMER CABINET**  
1/2" = 1'-0"

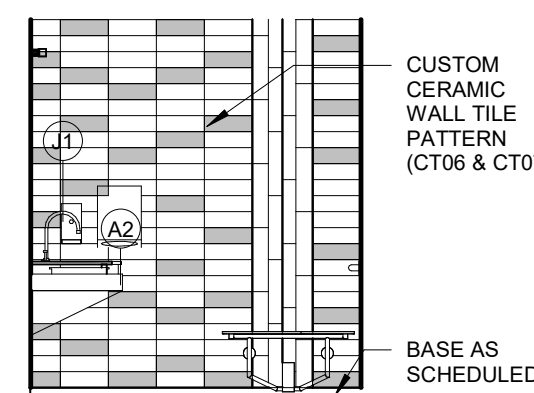
**05 PAT RM WARDROBE & A/V CABINET**  
3/4" = 1'-0"



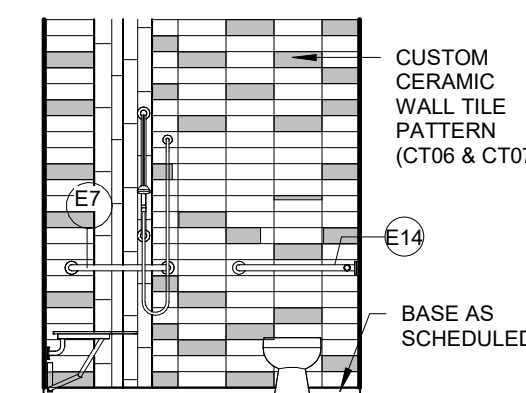
**02F TYP PATIENT TLT/ SHWR RM - SINK WALL**  
1/4" = 1'-0"



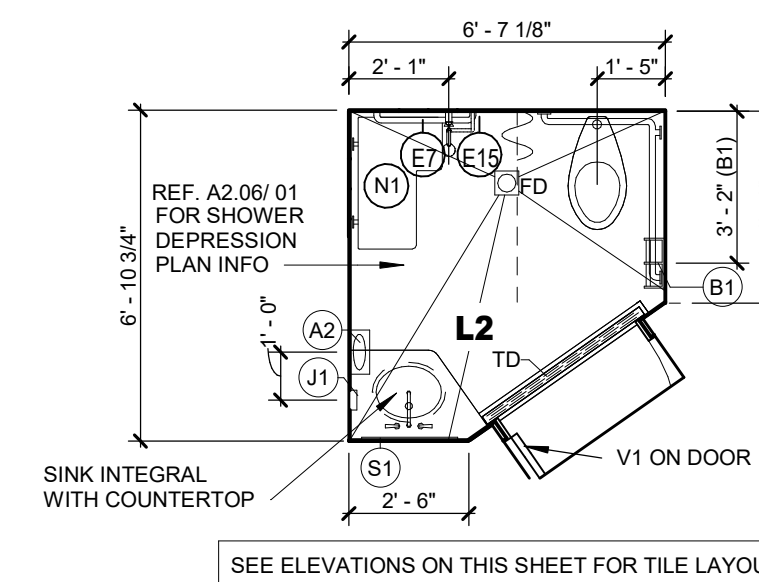
**02D TYP PATIENT TLT/ SHWR RM - TOILET SIDE WALL**  
1/4" = 1'-0"



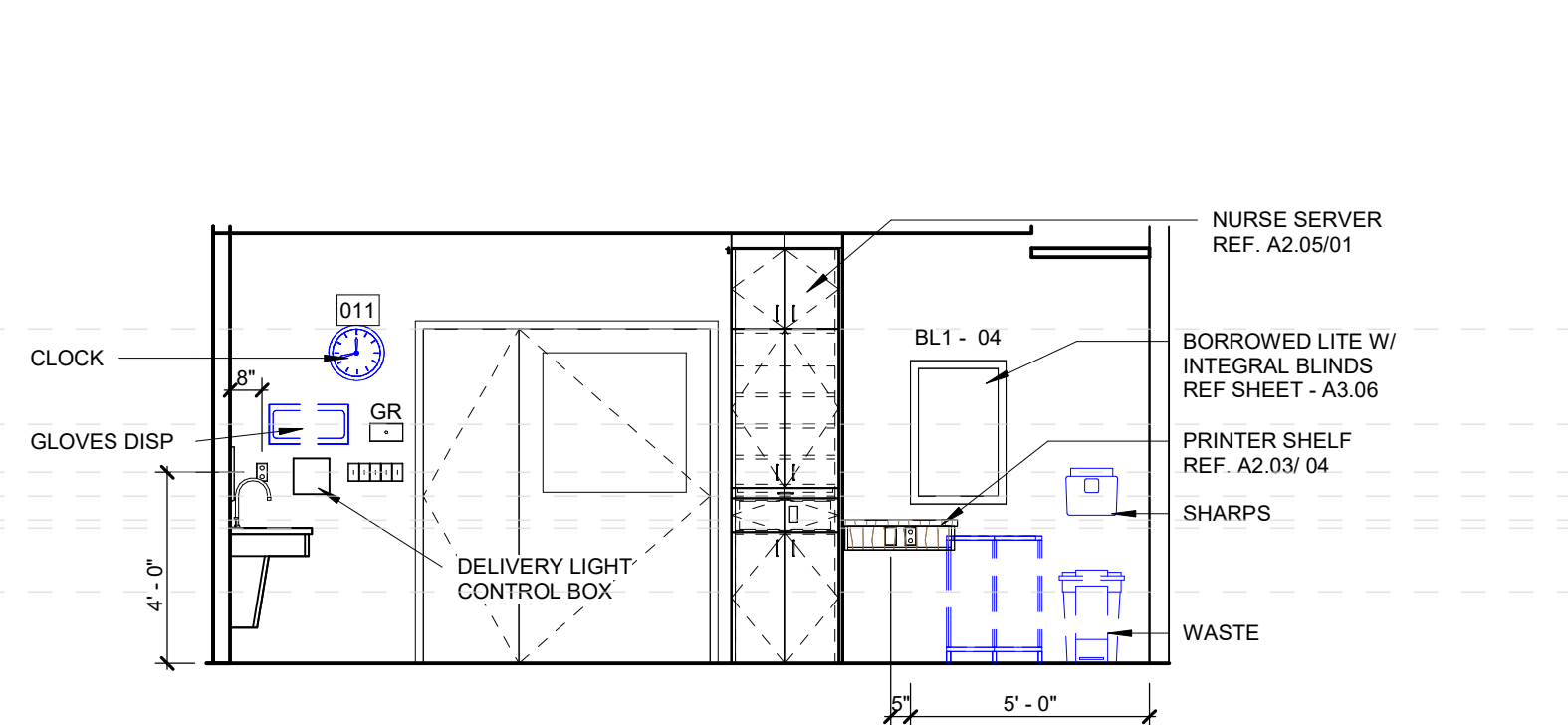
**02C TYP PATIENT TLT/SHWR RM - SINK SIDE WALL**  
1/4" = 1'-0"



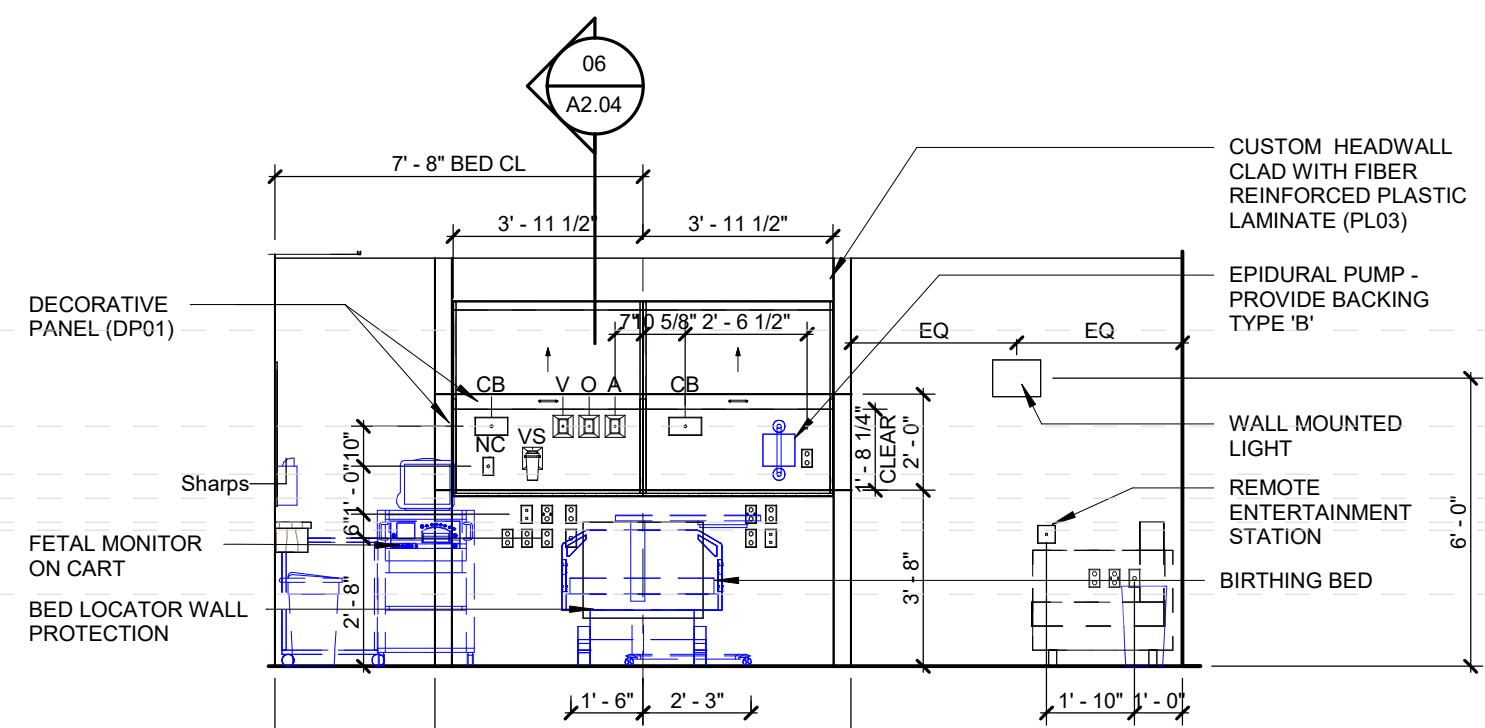
**02B TYP PATIENT TLT/SHWR RM - TOILET WALL**  
1/4" = 1'-0"



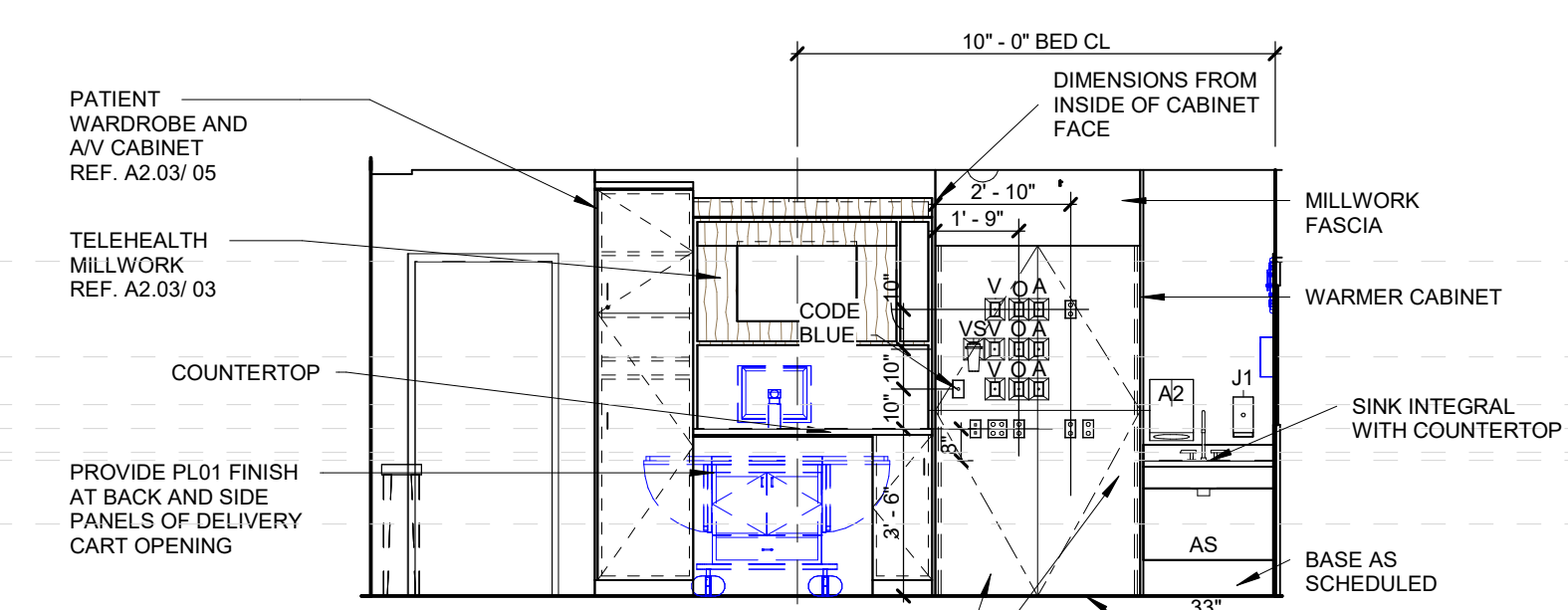
**02A TOILET ROOM TYPE T5**  
1/4" = 1'-0"



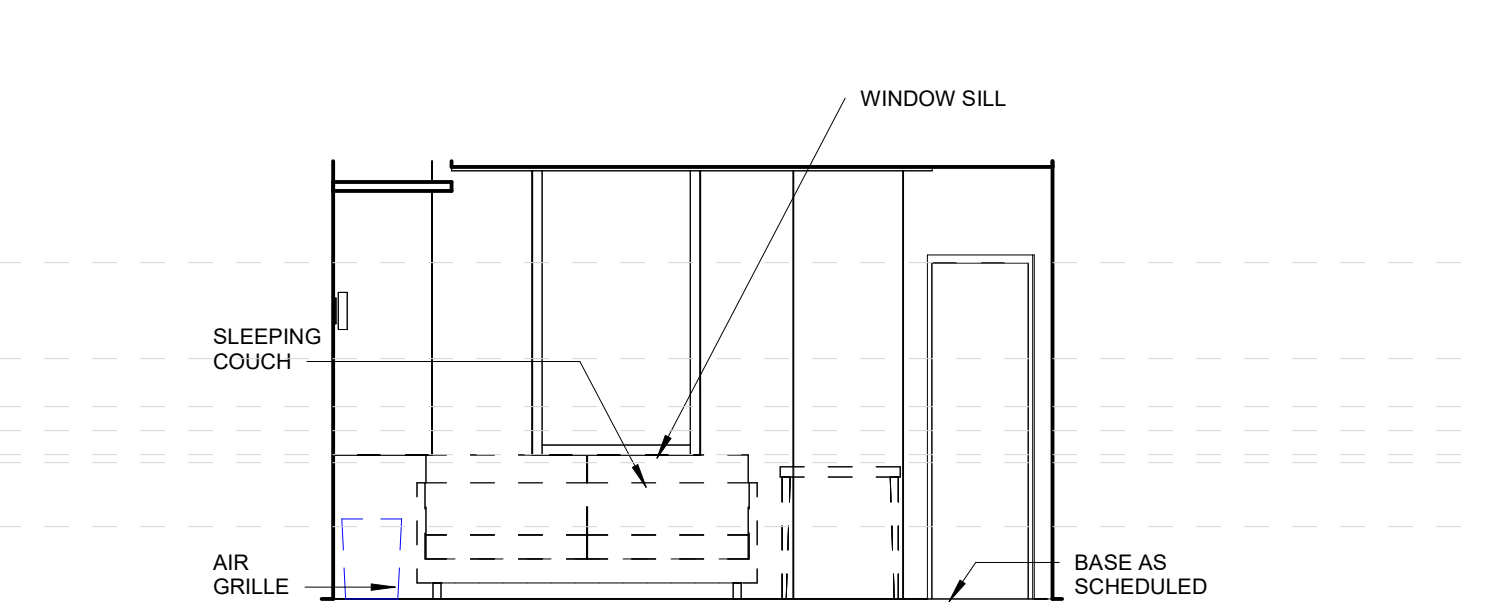
**01C LDR ELEVATION 1**  
1/4" = 1'-0"



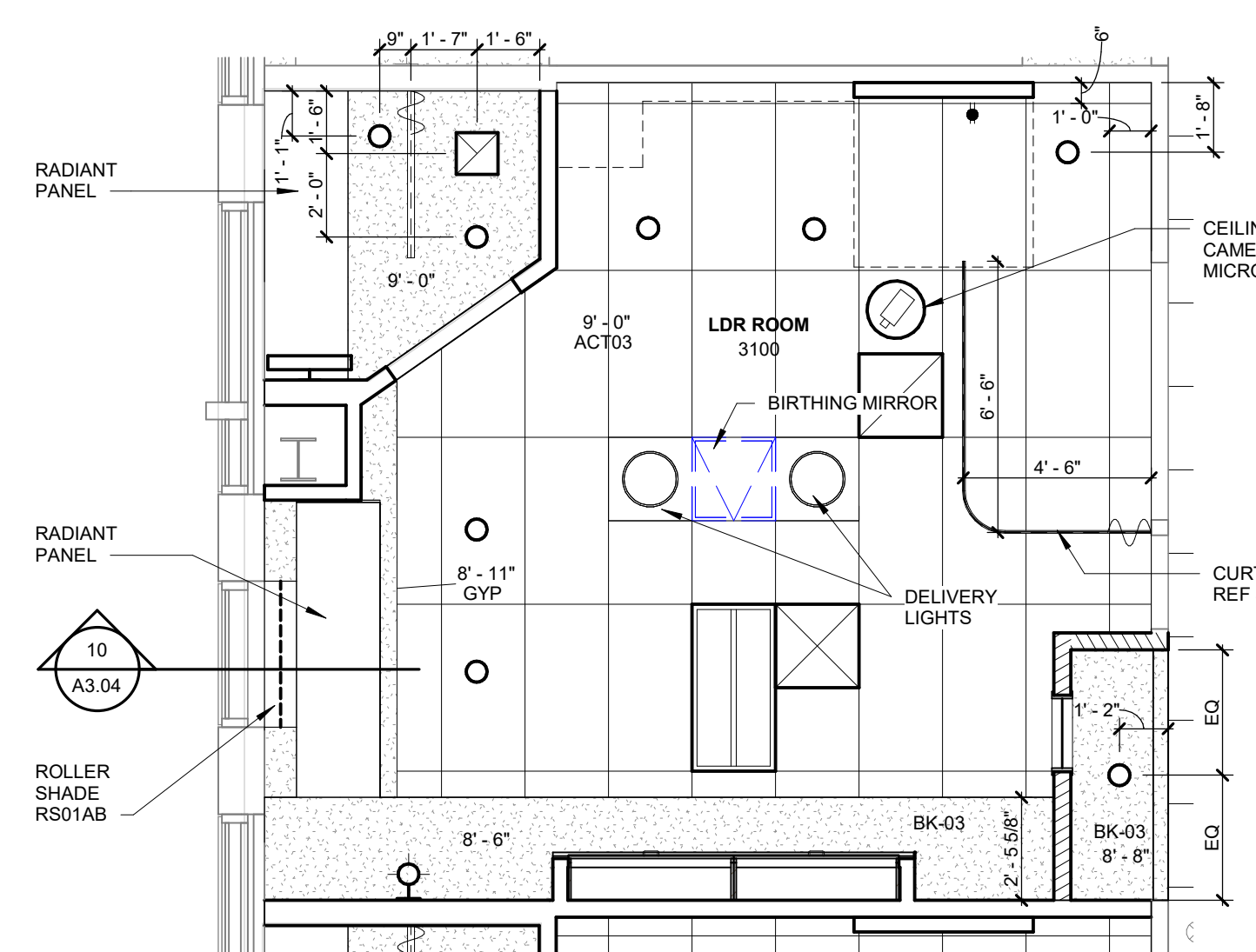
**01F LDR ELEVATION 4**  
1/4" = 1'-0"



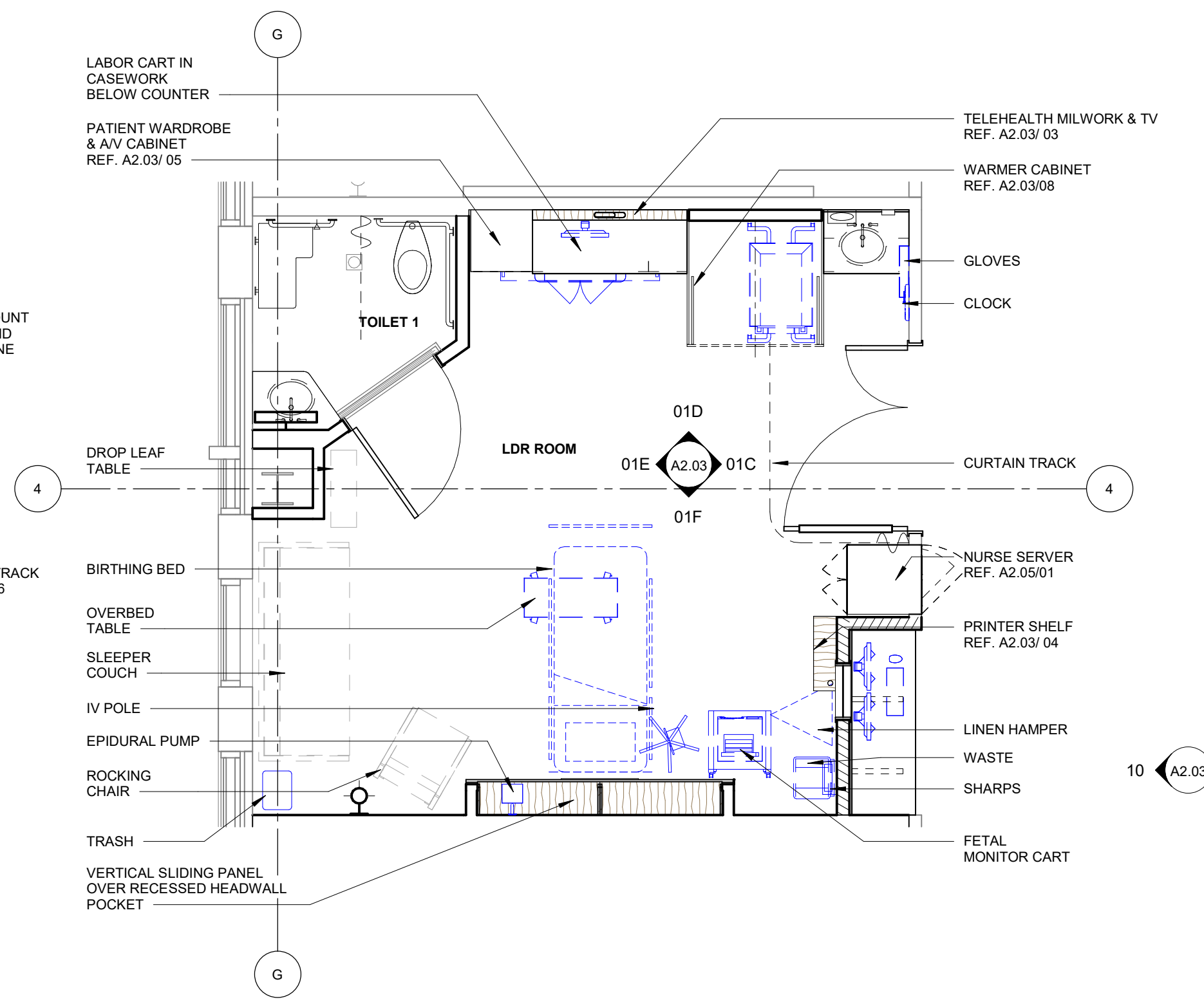
**01D LDR ELEVATION 2**  
1/4" = 1'-0"



**01E LDR ELEVATION 3**  
1/4" = 1'-0"

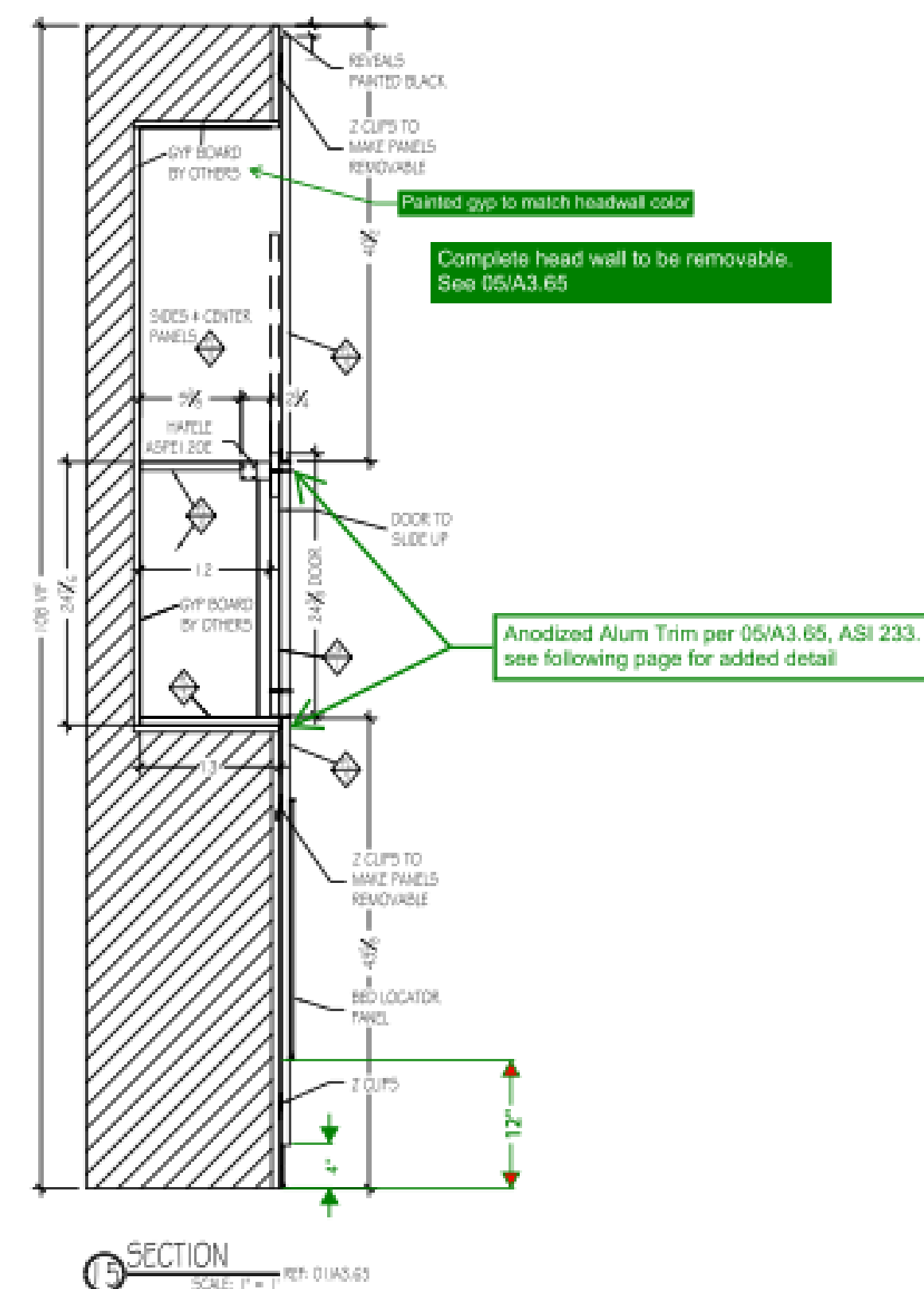
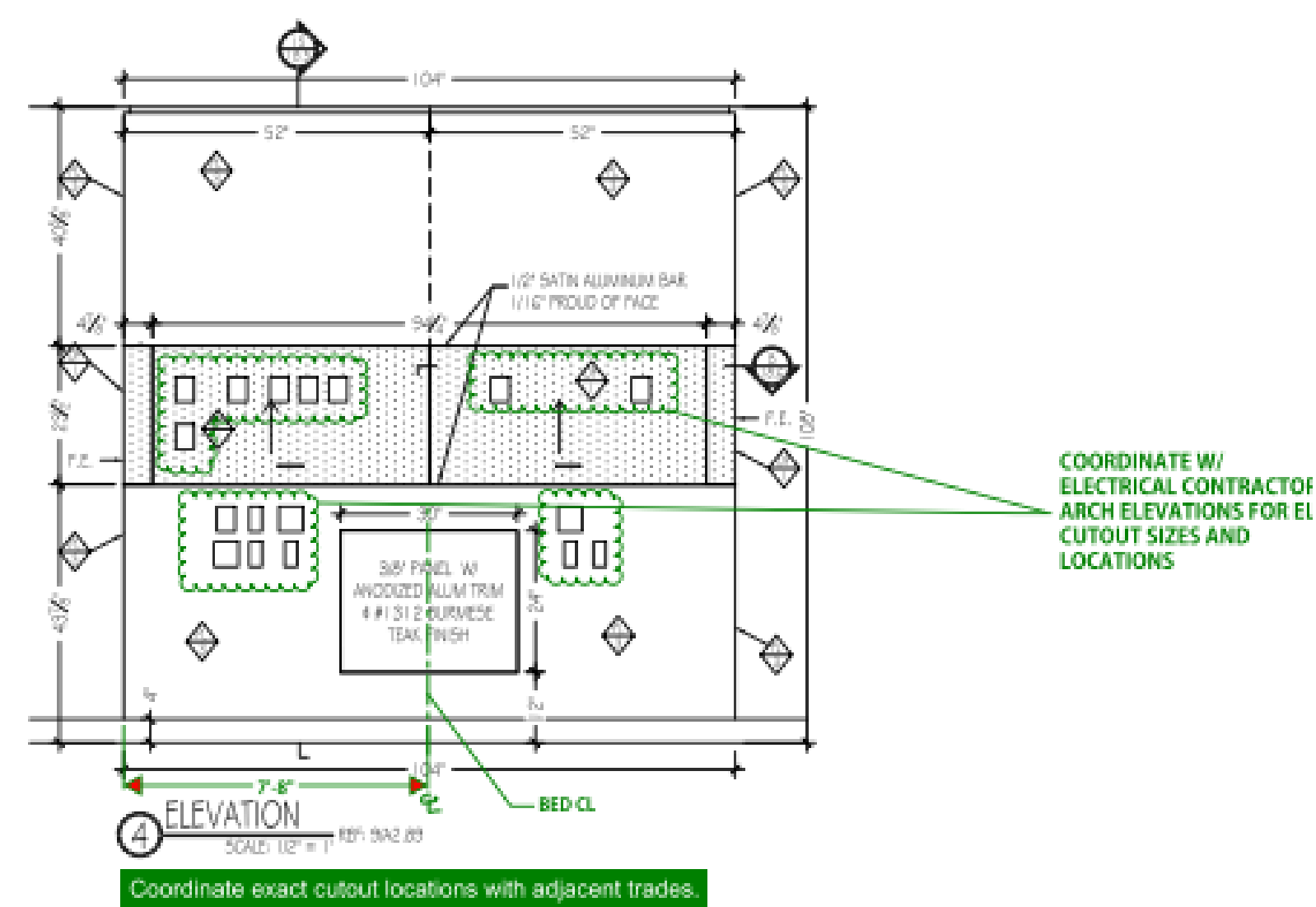
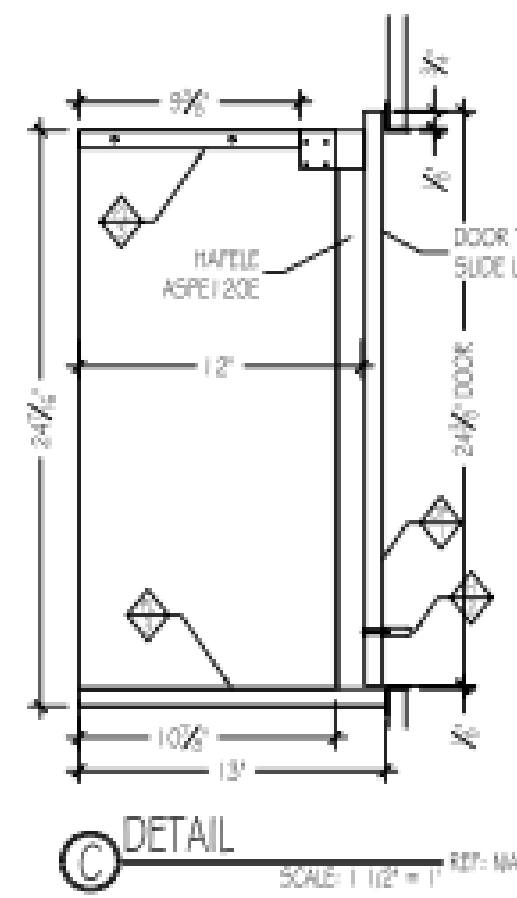
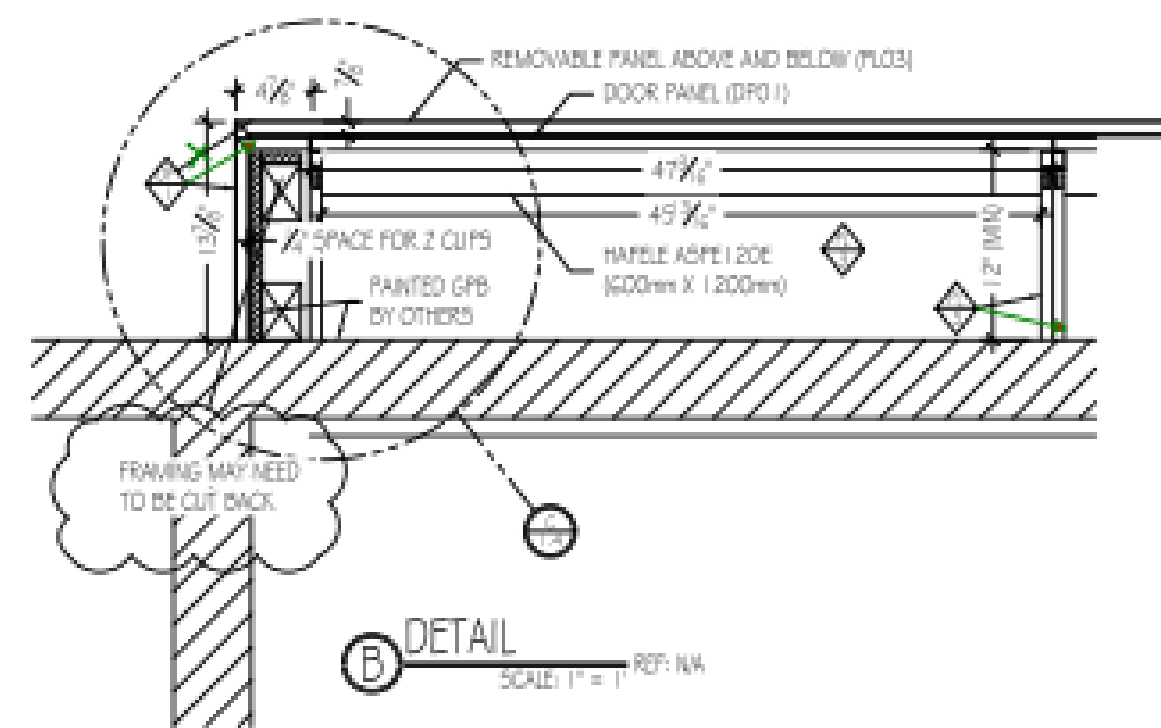
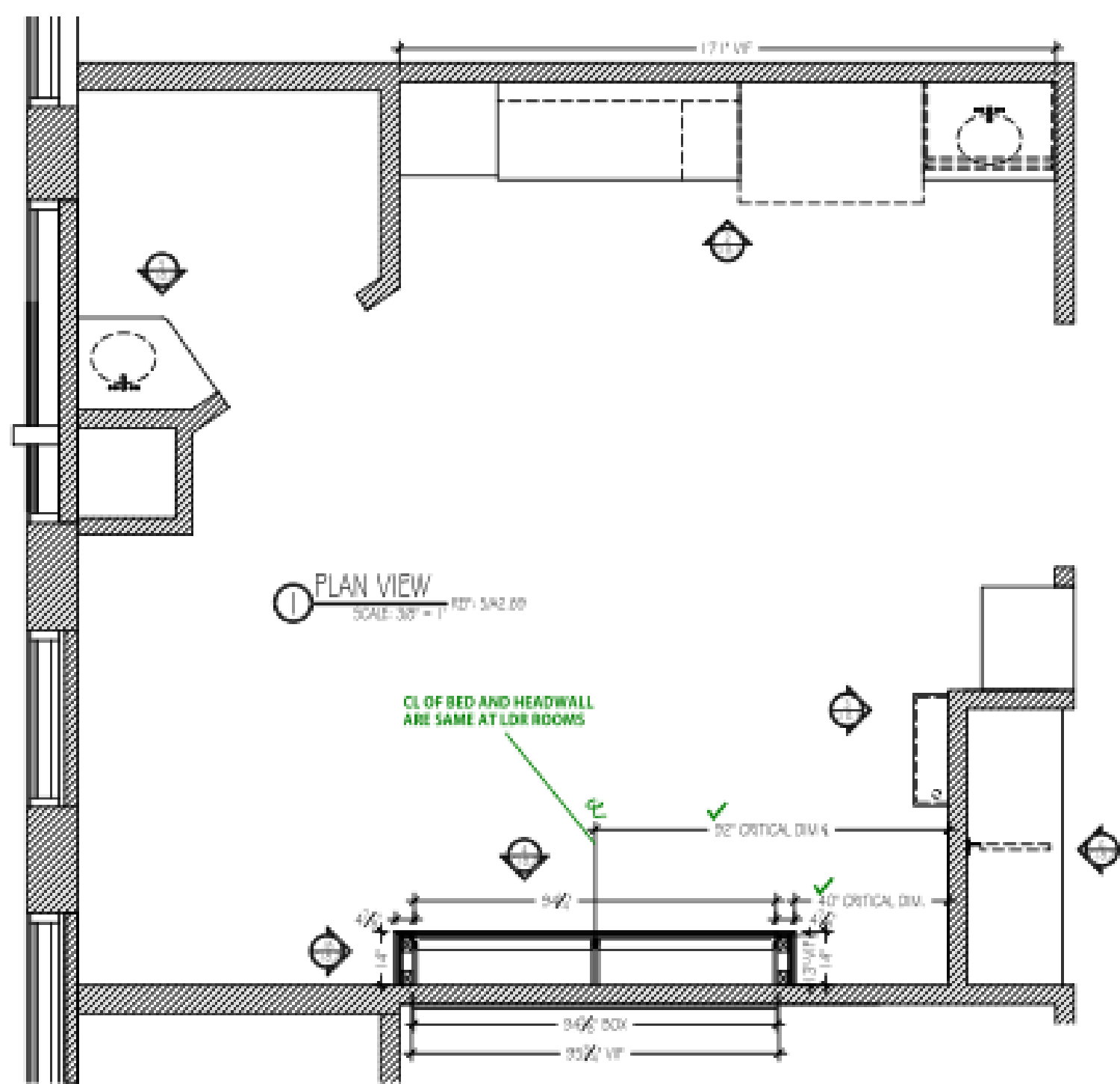
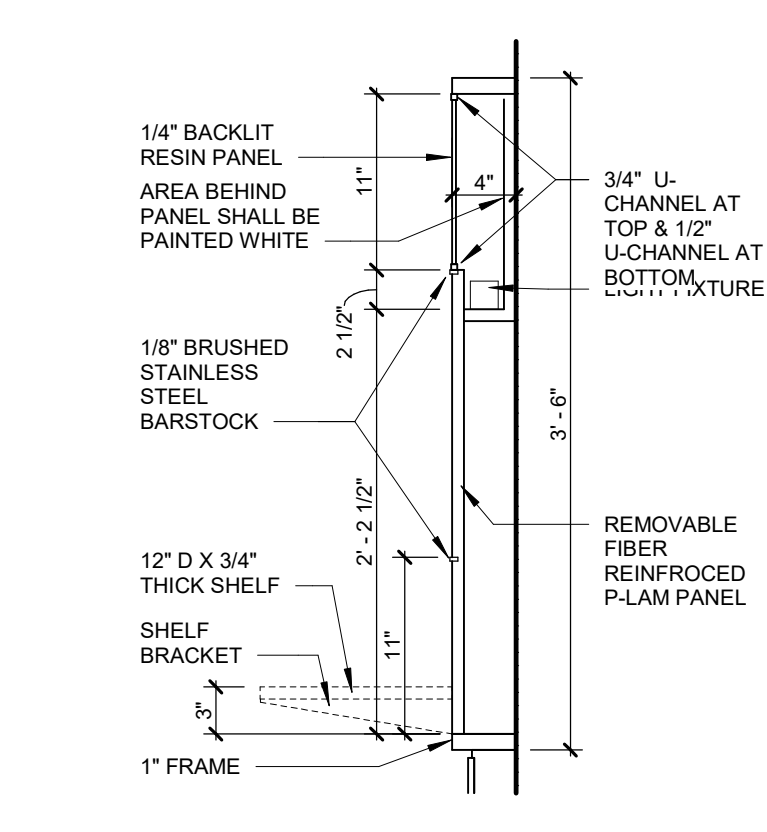
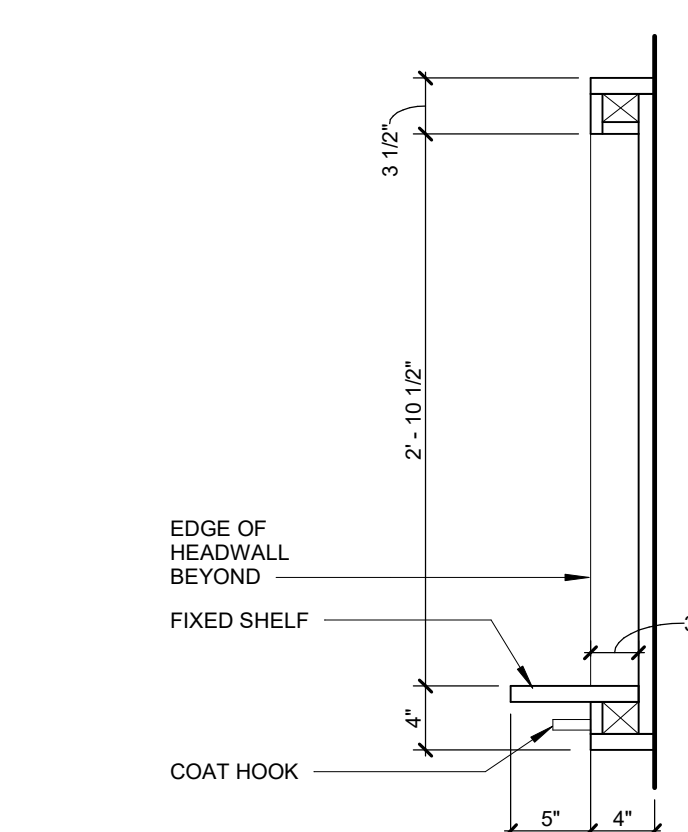
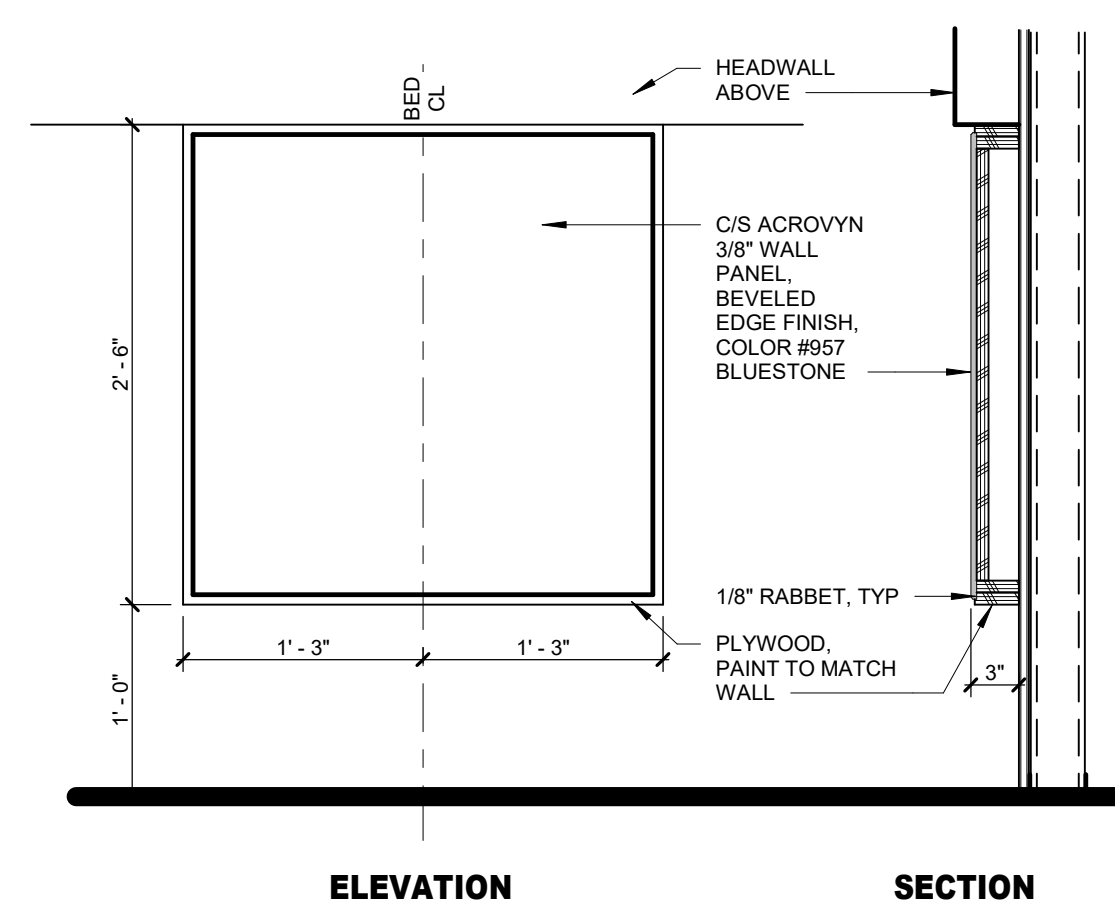
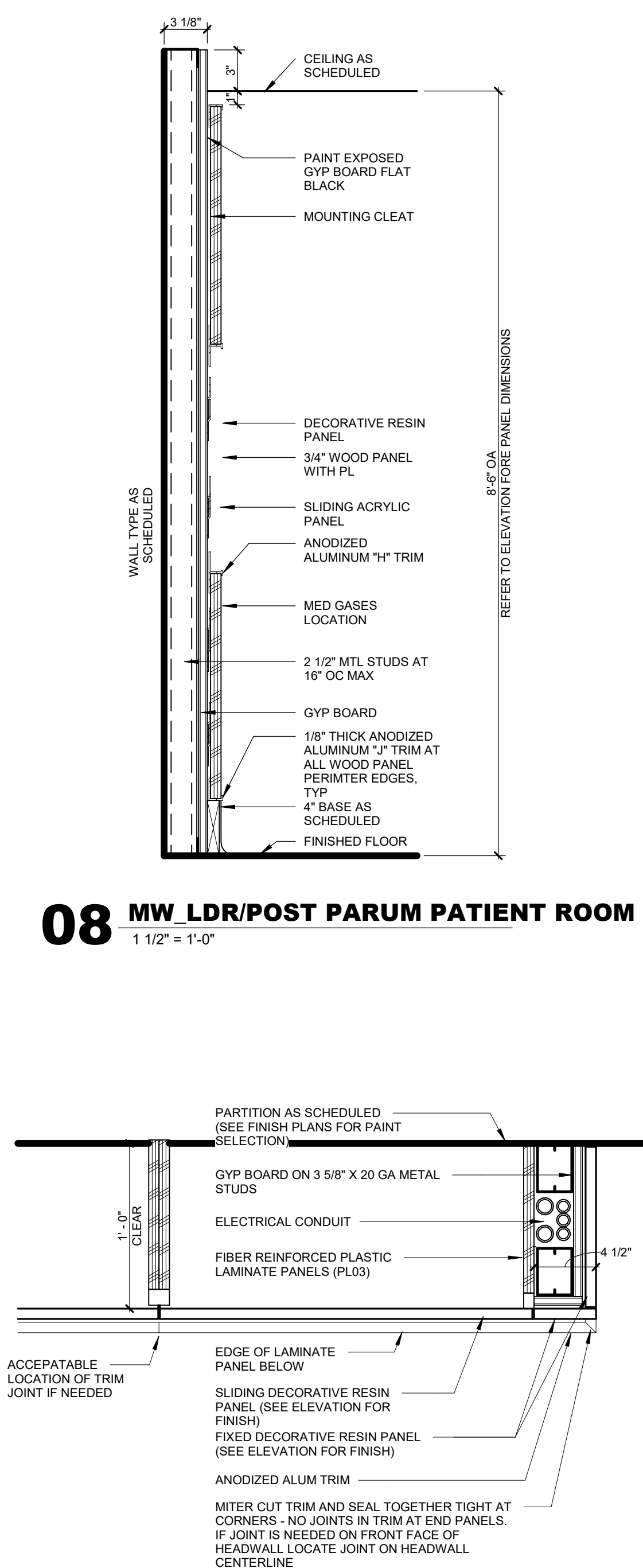
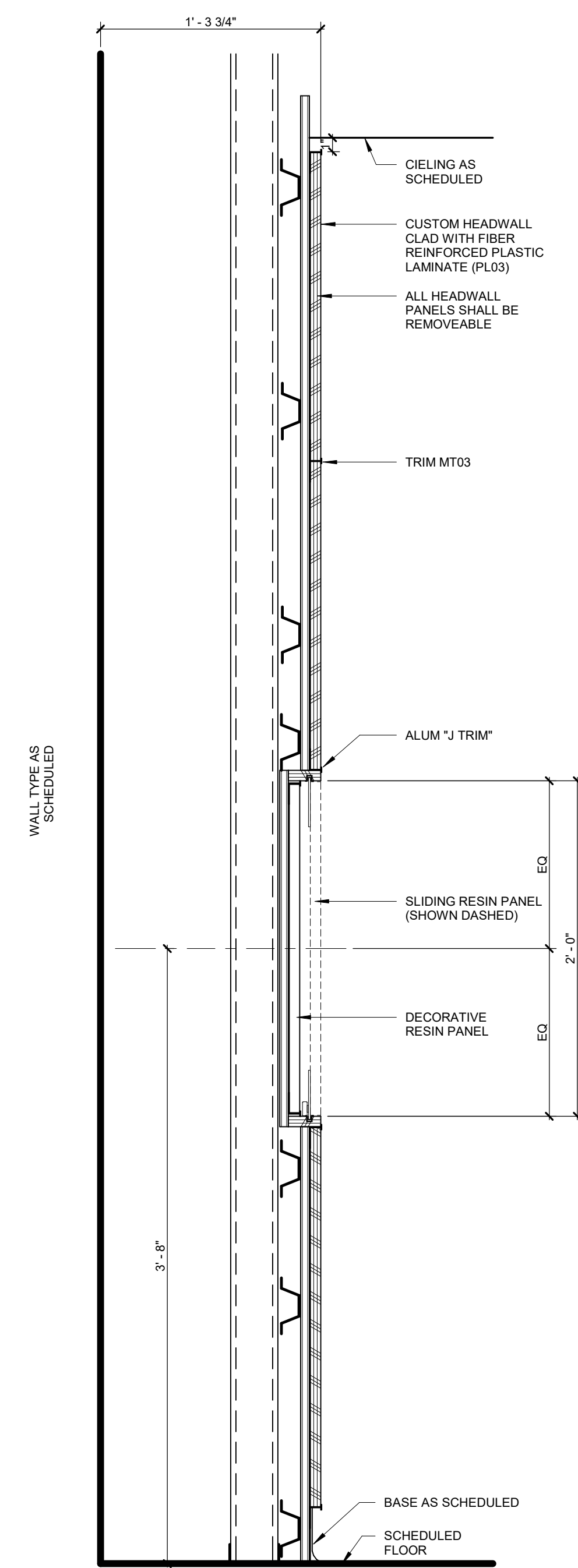
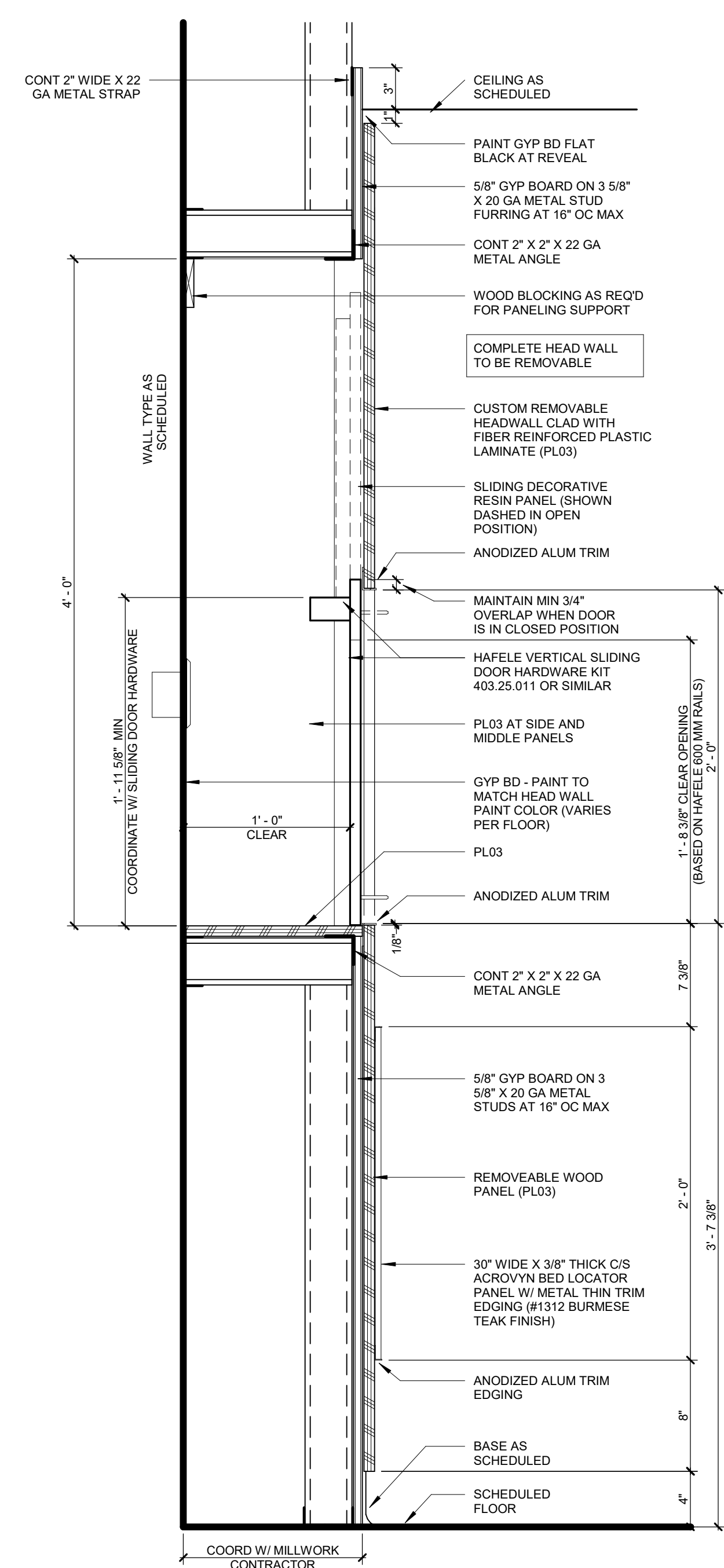


**01B LDR REMODEL ENLARGED RCP**  
1/4" = 1'-0"



**01A LDR ENLARGED PLAN**  
1/4" = 1'-0"

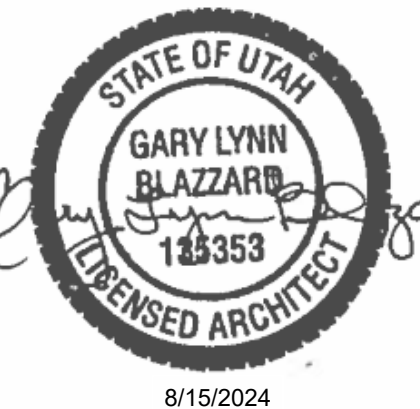


[illegible]

- ACoustical CEILING TILE (ACT03)
- DRYWALL SOFFIT
- MANUAL DUAL ROLLER SHADES BEYOND
- STAINLESS STEEL REVEAL
- ACCENT PAINT (PT0X)
- FIBER REINFORCED PLASTIC LAMINATE TO MATCH FL01
- SLIDING RESIN PANEL (DECORATIVE) (DP01) TO HIDE MED GASES
- SLIDING RESIN PANEL (DECORATIVE) (DP01)
- FURNITURE BY OWNER
- SHEET VINYL FLOORING (SHU02)
- SHEET VINYL FLOORING (SHU01)



LAYTON HOSPITAL  
MISC PROJECTS

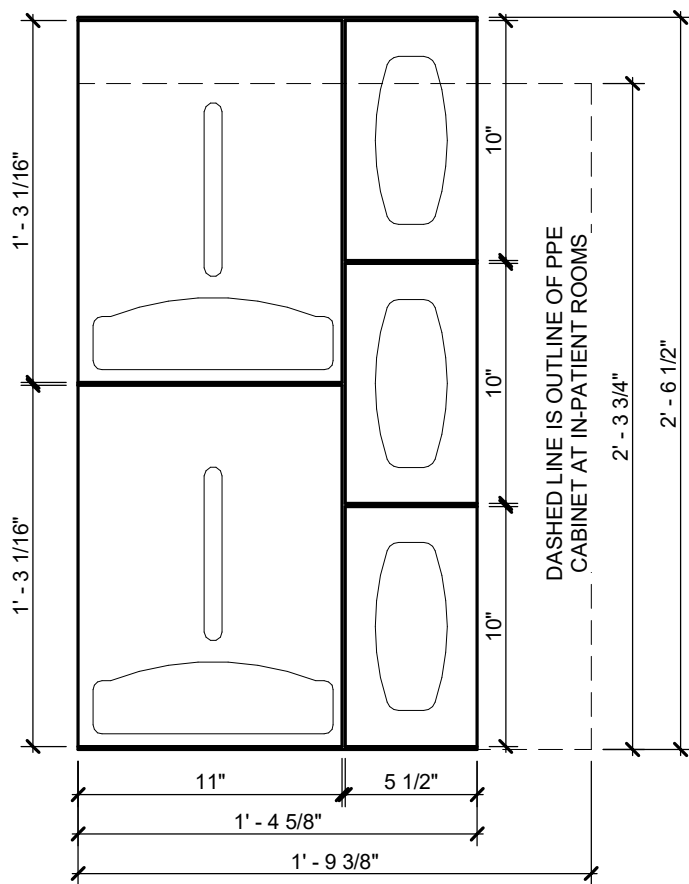


KEY PLAN

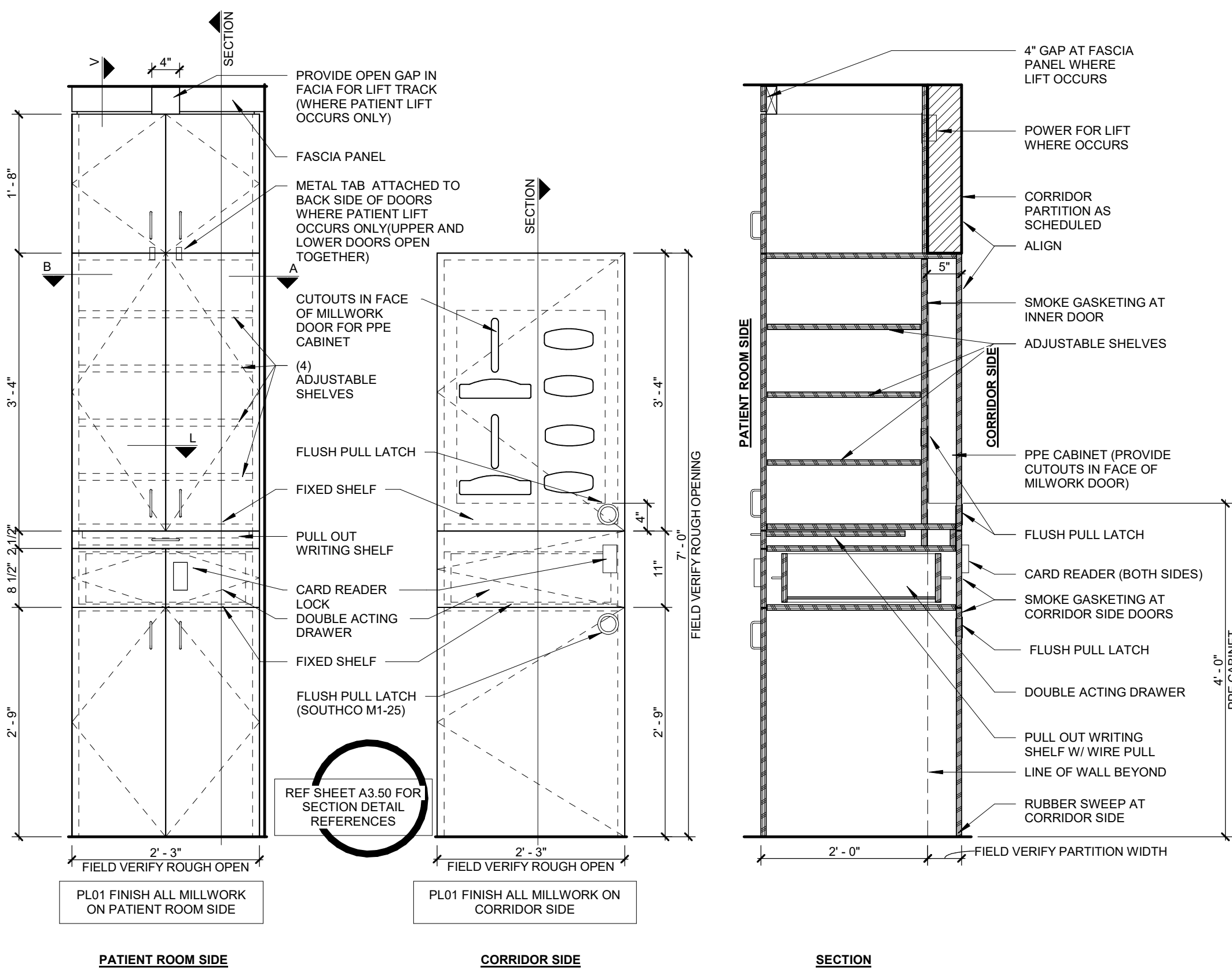
REVISION	NO.	DESCRIPTION	DATE

HKS PROJECT NUMBER  
**26404.000**  
DATE  
**8/15/2024**  
ISSUE  
**CONSTRUCTION DOCUMENTS**  
SHEET TITLE  
**LDR MILWORK DETAILS - NURSE SERVER**  
SHEET NO.

**A2.05**



**02 NURSE SERVER PPE ARRANGEMENT**  
1 1/2" = 1'-0"



**01 TYP PATIENT ROOM NURSE SERVER**  
3/4" = 1'-0"



HKS PROJECT NUMBER  
**26404.000**

DATE  
**8/15/2024**

ISSUE  
**CONSTRUCTION  
DOCUMENTS**

SHEET TITLE  
**LDR SHOWER  
DETAILS -WITH  
SLAB DEPRESSION**

SHEET NO.

© 2008 HKS, INC.





