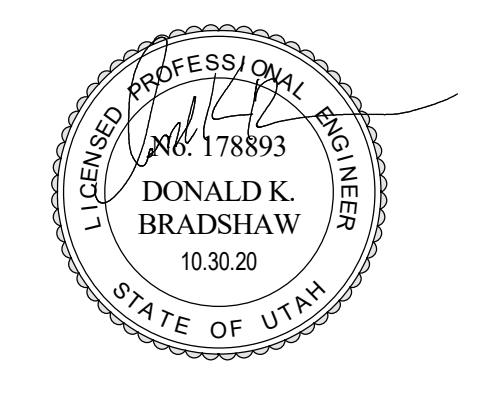


KEYED NOTES



181 East 6600 South  
Murray, Utah 84107  
O: (801) 530-3148  
F: (801) 530-3150  
www.vcbo.com  
Vofa project #: 20360

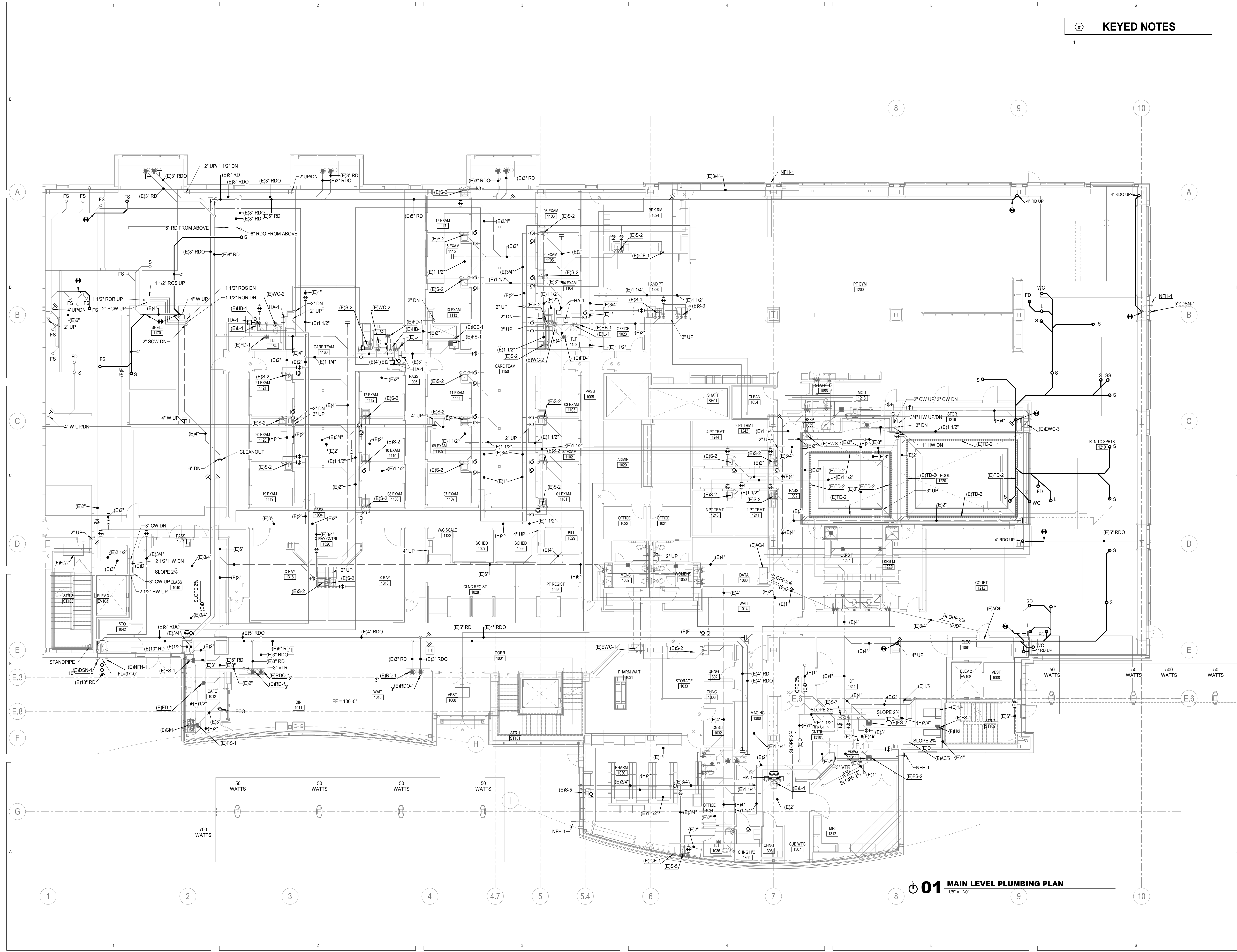
REV	DATE	DESCRIPTION

VCBO NUMBER: 20320  
CLIENT NUMBER: 20360  
DATE: 2020.10.30

**MCKAY-DEE AMBULATORY SURGERY CENTER EXPANSION**  
INTERMOUNTAIN HEALTHCARE  
3895 MEDICAL DRIVE, OGDEN, UTAH 84403  
CONSTRUCTION DOCUMENTS

MAIN LEVEL PLUMBING PLAN

P110.1



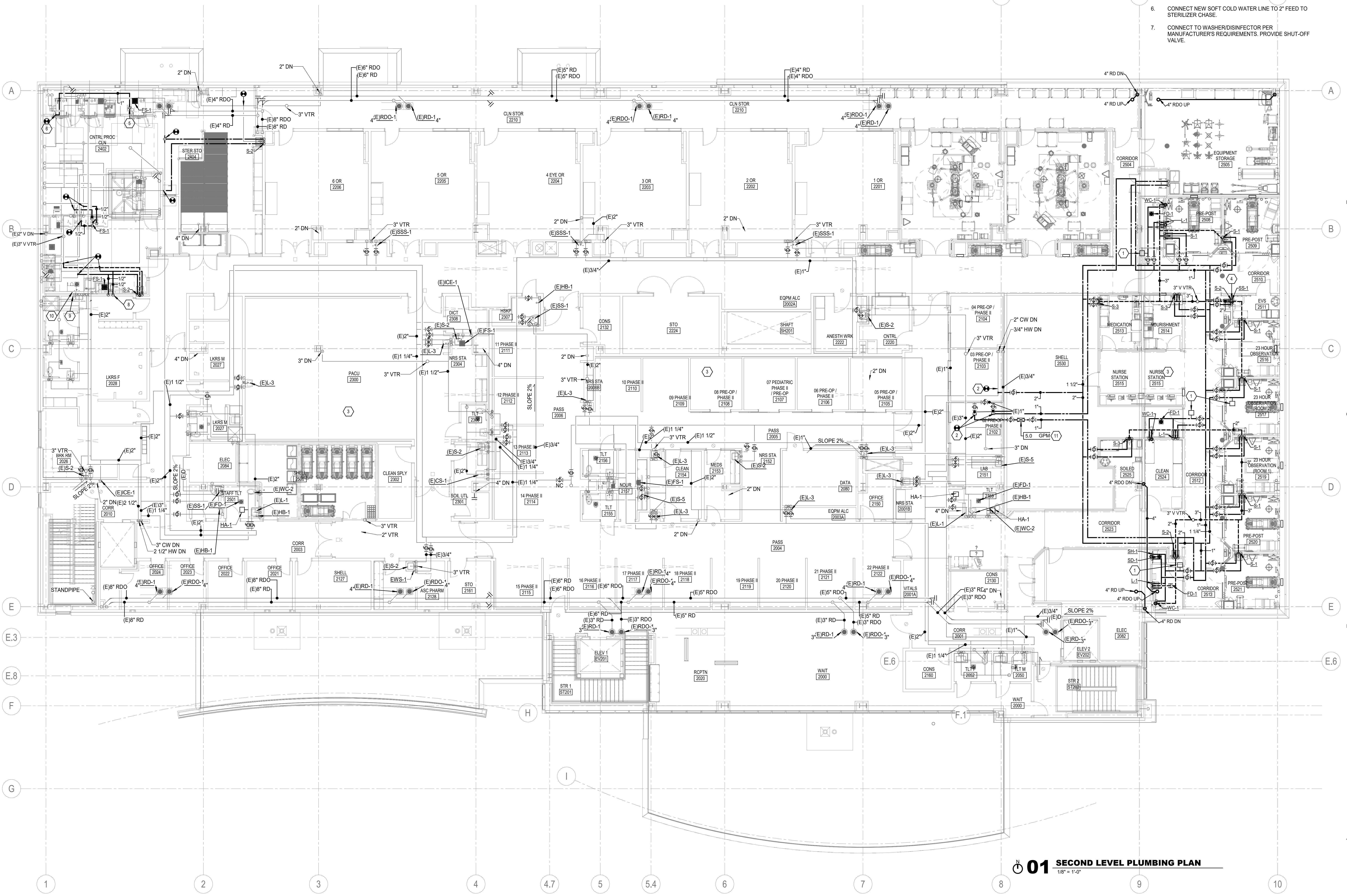
**01 MAIN LEVEL PLUMBING PLAN**  
1/8" = 1'-0"

REV	DATE	DESCRIPTION

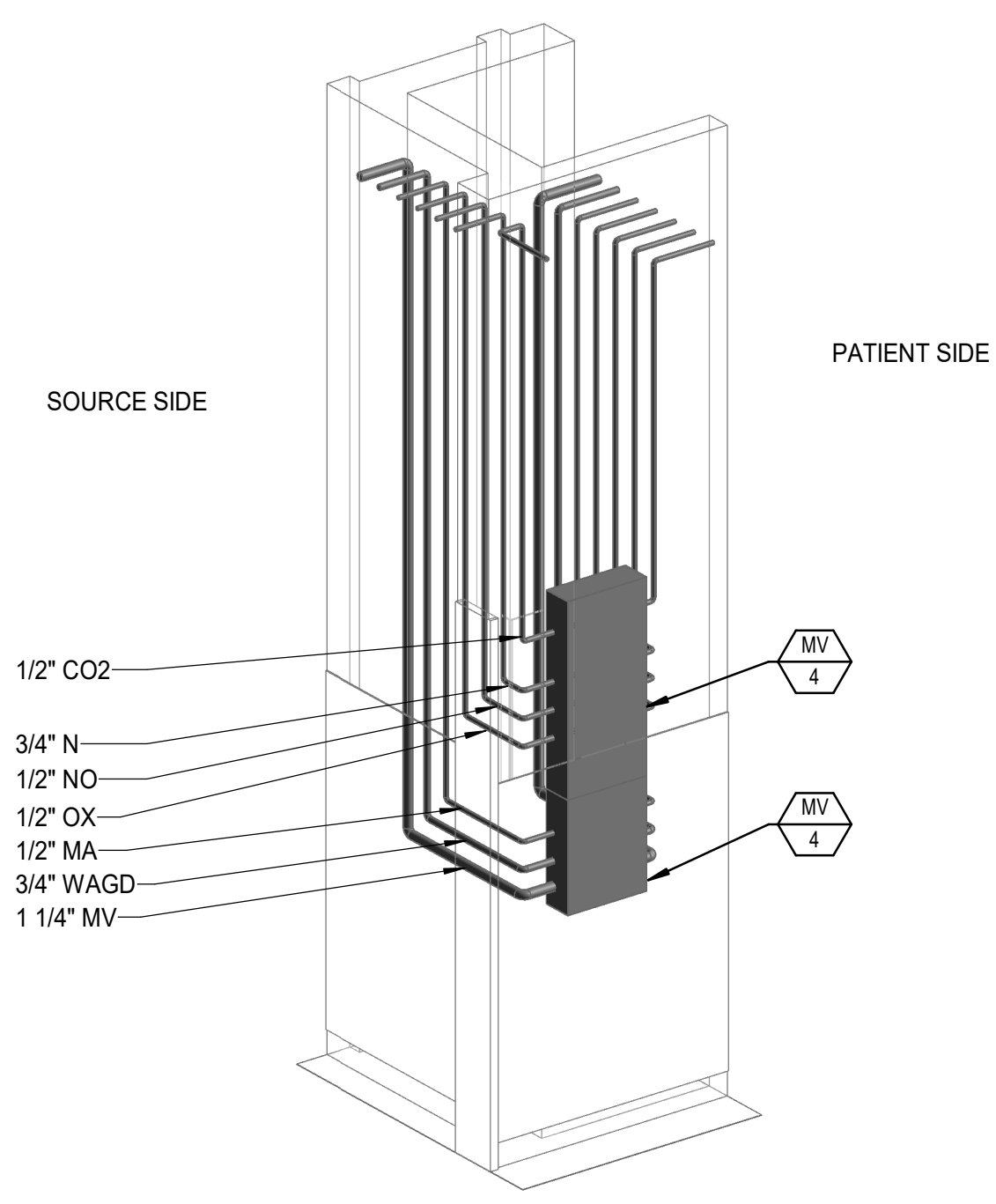
VCBO NUMBER:	20320
CLIENT NUMBER:	20360
DATE:	2020.10.30

- KEYED NOTES**
- CONNECT TO SINK FAUCETS. PROVIDE STOPS AND SUPPLIES. EXTEND SINK WASTE PIPING TO FLOOR SINK.
  - REWORK EXISTING PIPING TO SERVE ULTRASONIC CLEANER AND NEPTUNE STATION. PROVIDE STOPS AND SUPPLIES.
  - REINSTALL WALL WASTE BOX FOR NEPTUNE SYSTEM. REWORK REMAINING WASTELINE FROM REMOVED SINK.
  - CALIBRATED CIRCUIT SETTER. SET TO FLOW INDICATED.

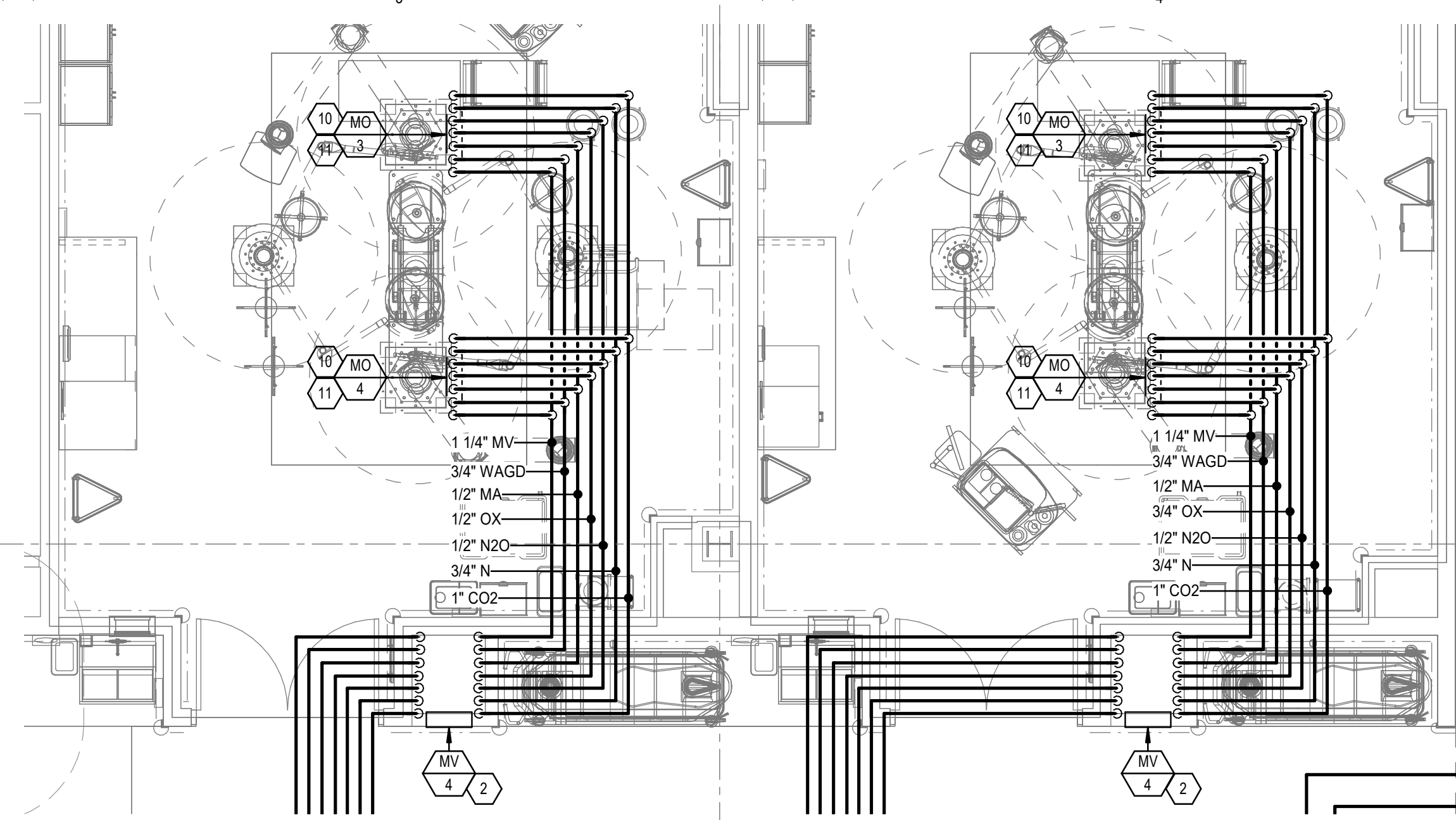
- KEYED NOTES**
- WATER HAMMER ARRESTOR. INSTALL IN ACCESSIBLE LOCATION.
  - NEW CONNECTION TO EXISTING DOMESTIC WATER PIPING.
  - NEW WORK SHOWN DARK, EXISTING WORK SHOWN LIGHT.
  - SUPPLY BACK TO BACK FIXTURES FROM SAME PLUMBING DROP.
  - CONNECT TO STERILIZER PER MANUFACTURER'S REQUIREMENTS. PROVIDE SHUT-OFF VALVE.
  - CONNECT NEW SOFT COLD WATER LINE TO 2" FEED TO STERILIZER CHASE.
  - CONNECT TO WASHER/DISINFECTOR PER MANUFACTURER'S REQUIREMENTS. PROVIDE SHUT-OFF VALVE.



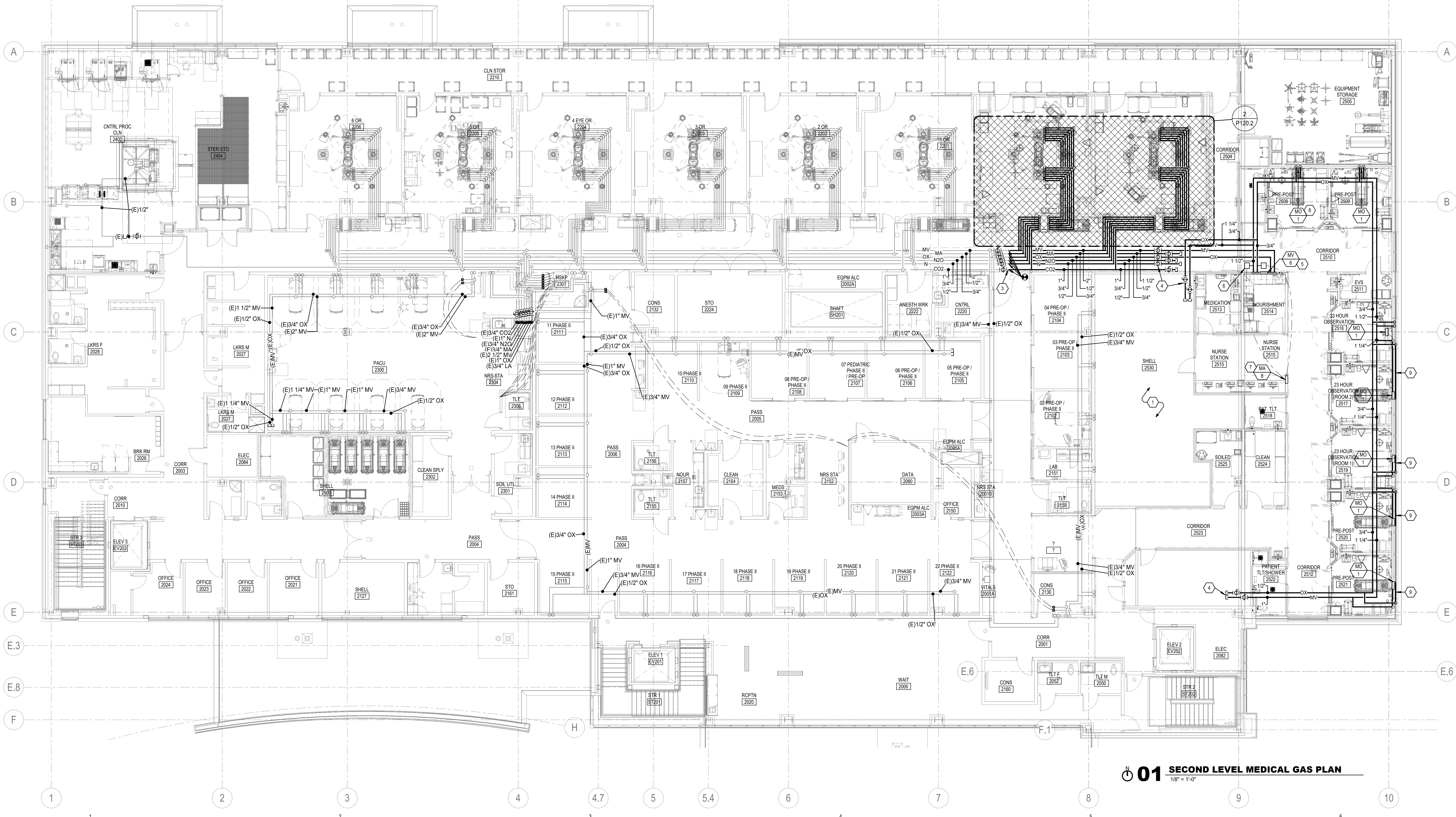
**01 SECOND LEVEL PLUMBING PLAN**  
1/8" = 1'-0"



**3 TYPICAL ZONE VALVE BOX PIPE CHASE SCHEMATIC**



**2 ENLARGED SECOND LEVEL MEDICAL GAS PLAN**  
1/4" = 1'-0"



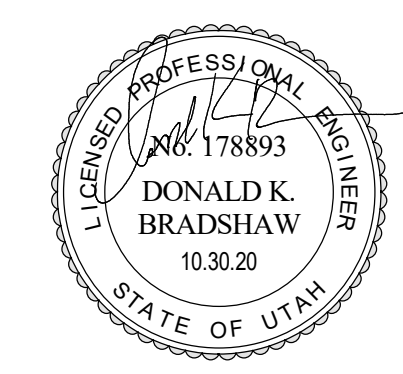
**01 SECOND LEVEL MEDICAL GAS PLAN**  
1/8" = 1'-0"

**KEYED NOTES**

- EXISTING SHOWN LIGHT TO REMAIN. NEW WORK IS SHOWN DARK. FIELD VERIFY EXISTING CONDITIONS AND CONNECTION POINTS. TYPICAL.
- SEE 1/4 SCALE PLANS FOR DETAILED LAYOUT.
- CONNECT TO EXISTING MEDICAL GAS PIPING AT THIS POINT. FIELD VERIFY EXISTING CONDITIONS.
- PROVIDE LOCKABLE SHUT OFF ISOLATION VALVES ON MEDICAL GAS PIPING. PROVIDE 18" STUBBED AND CAPPED PIPE FOR FUTURE POSSIBLE EXTENSION ON UNUSED PIPING. PROVIDE FRANGIBLE LOCKS ON ALL VALVES. TYPICAL.
- MEDICAL GAS ZONE VALVE BOX. SEE SCHEDULES. SEE DETAILS FOR MOUNTING HEIGHTS.
- MEDICAL GAS ALARM PRESSURE SWITCHES. CONTROL CONTRACTOR TO WIRE TO MEDICAL GAS ALARM PANEL.
- MEDICAL GAS ALARM PANEL. SEE SCHEDULES. COORDINATE MOUNTING LOCATION WITH ARCHITECTURAL ELEVATIONS.
- MEDICAL GAS OUTLETS BEHIND PATIENT BED. SEE SCHEDULES FOR TYPE, COUNT AND FINAL PIPE SIZE. COORDINATE MOUNTING LOCATION WITH ARCHITECTURAL ELEVATIONS. TYPICAL.
- DROP MEDICAL GAS PIPING NEAR COLUMN. RUN HORIZONTAL UNDER WINDOW TO FINAL LOCATION OF MEDICAL GAS OUTLETS. COORDINATE ROUTING WITH ALL OTHER TRADES. TYPICAL FOR LOCATIONS UNDER WINDOWS.
- CONNECT MEDICAL GAS PIPING TO BOOM PER MANUFACTURER'S REQUIREMENTS. PROVIDE AND INSTALL CHECK VALVES AT EACH CONNECTION POINT.
- CONNECT NITROGEN TO BOOM BRAKE PER MANUFACTURER'S REQUIREMENTS. PROVIDE AND INSTALL CHECK VALVE AND PRESSURE REGULATOR. REGULATE PRESSURE FROM 180 PSIG TO 40 PSIG.

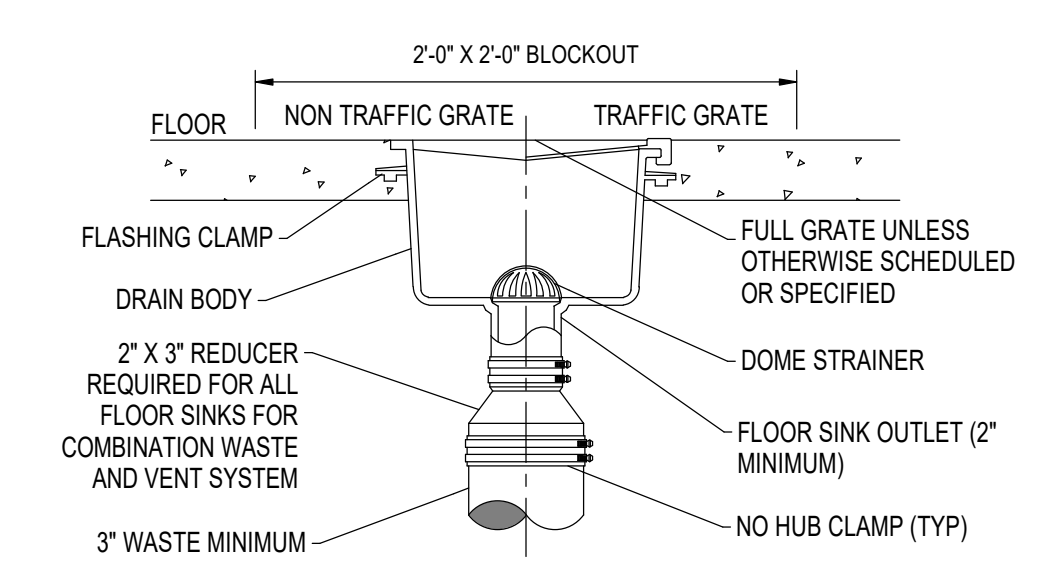
REV	DATE	DESCRIPTION

VCBO NUMBER: 20320  
CLIENT NUMBER: 20360  
DATE: 2020.10.30

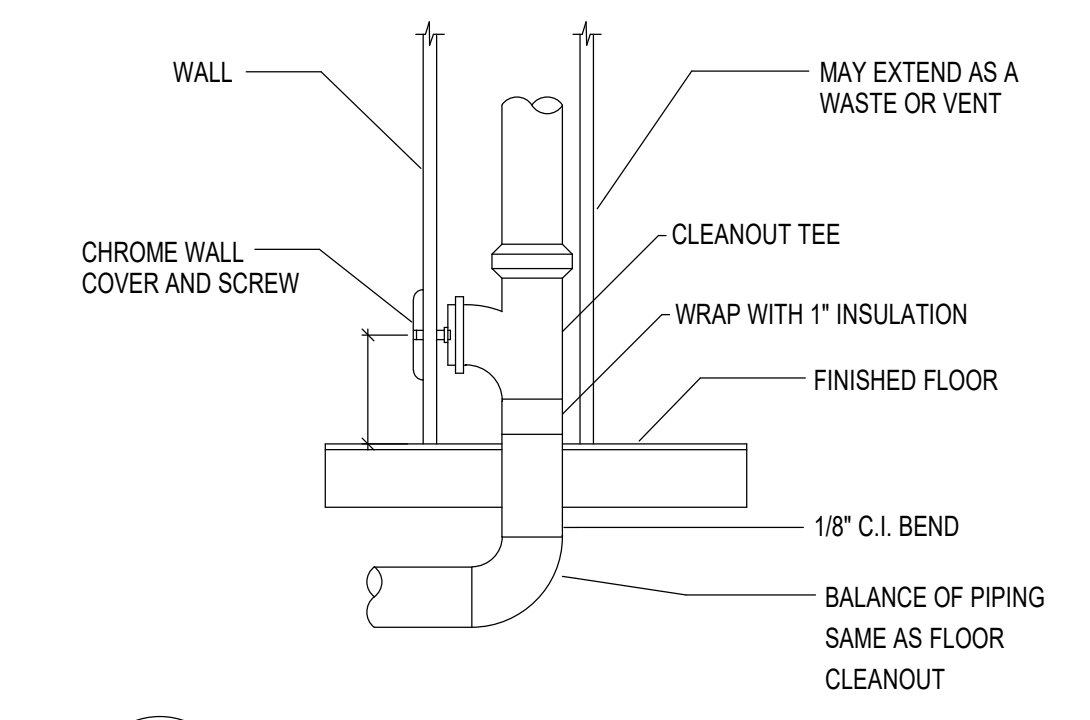


REV	DATE	DESCRIPTION

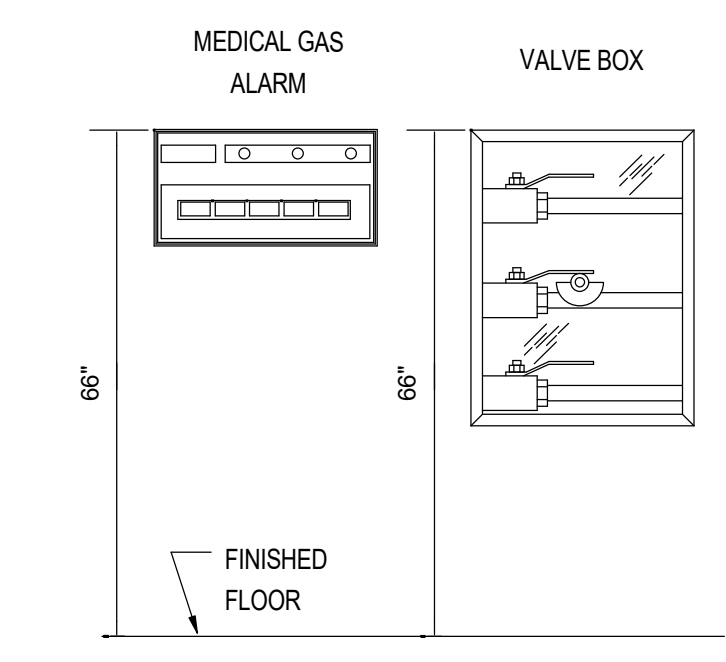
VCBO NUMBER:	20320
CLIENT NUMBER:	20360
DATE:	2020.10.30



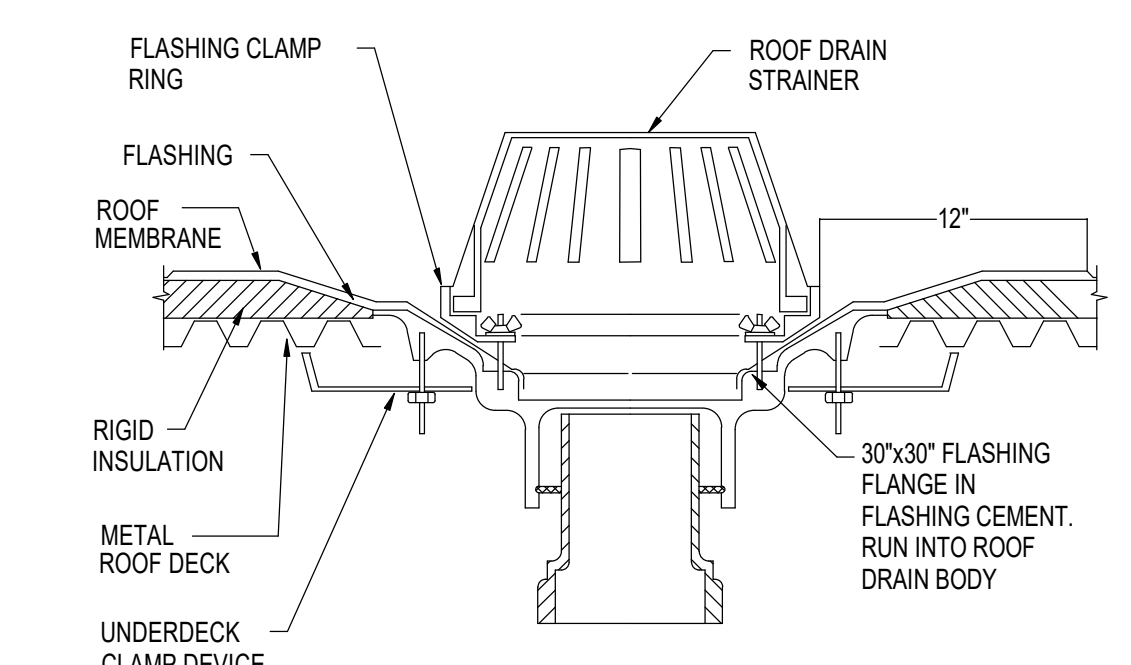
**4 FLOOR SINK**  
P501 NO SCALE



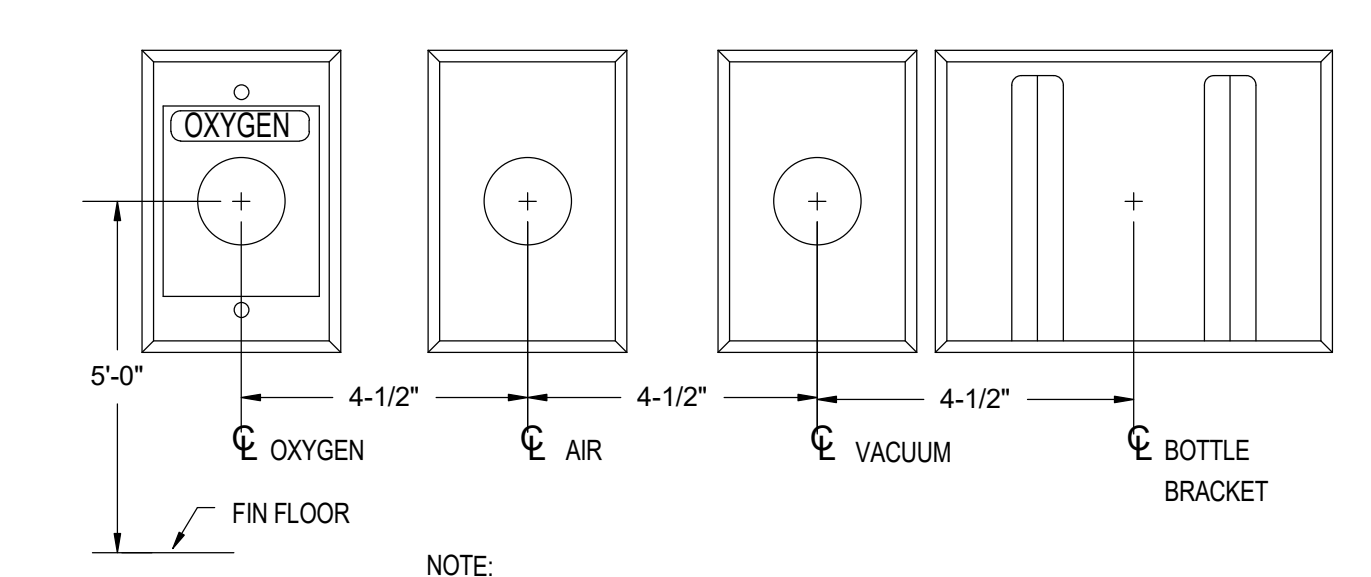
**1 WALL CLEANOUT DETAIL**  
P501 NO SCALE



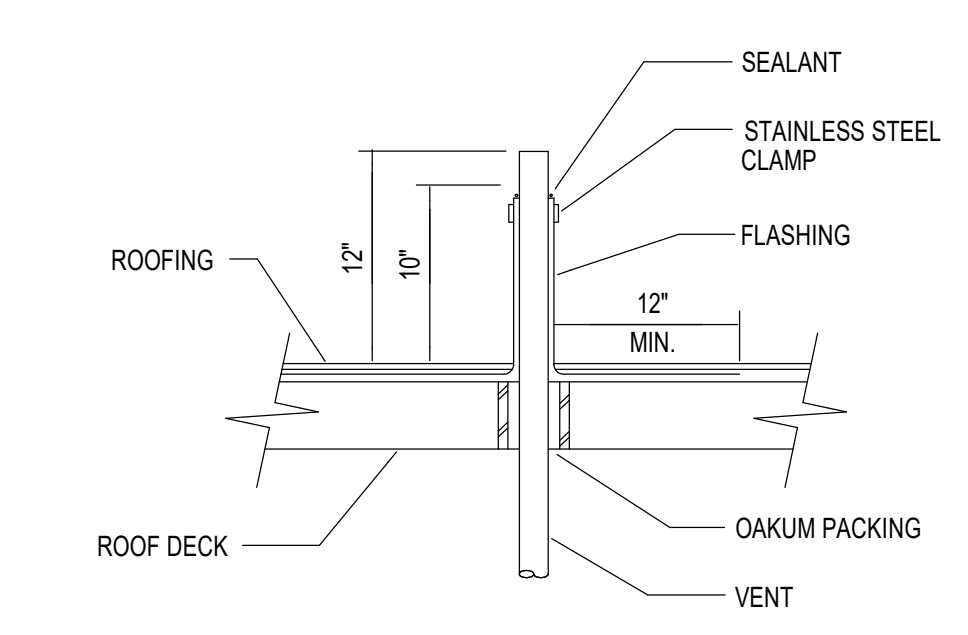
**5 MEDICAL GAS MOUNTING HEIGHT DETAIL**  
P501 NO SCALE



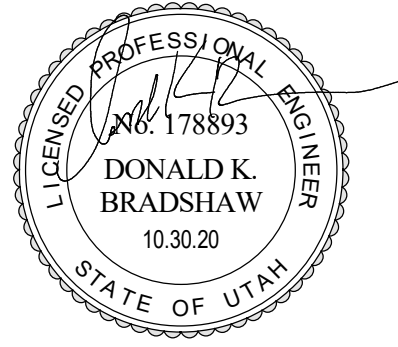
**2 ROOF DRAIN**  
P501 NO SCALE



**6 OXYGEN, AIR AND VACUUM OUTLET SPACING**  
P501 NO SCALE



**3 VENT THRU ROOF FLASHING & SLEEVING**  
P501 NO SCALE



REV	DATE	DESCRIPTION

VCBO NUMBER:	20320
CLIENT NUMBER:	20360
DATE:	2020.10.30

**MEDICAL GAS OUTLETS SCHEDULE**

SYMBOL	ROOM TYPE	# OF OUTLETS								PIPE DROP SIZE TO OUTLET(S)					REMARKS		
		OX	MA	MV	N	N2O	CO2	WAGD	OX	MA	MV	N	N2O	CO2		WAGD	
MO-1	PRE/POST 23 HR OBS	--	1	1	--	--	--	--	1/2"	--	--	3/4"	--	--	--	--	1.2
MO-3	O.R BOOM	-	1	2	1	-	1	--	--	1/2"	1"	3/4"	--	1/2"	--	--	1.3,4
MO-4	O.R ANESTHESIA BOOM	3	2	2	--	1	--	1	1/2"	1/2"	1"	--	1/2"	--	3/4"	--	1.3,4

- UNLESS NOTED OTHERWISE, ALL OUTLETS ARE CHEMETRON-STYLE QUICK-CONNECTS - SEE ARCHITECTURAL DRAWINGS FOR EXACT LOCATIONS AND ELEVATIONS  
OUTLETS IN "MEDICAL EQUIPMENT" ARE SUPPLIED WITH THE PIECE OF EQUIPMENT
- PIPE DROP SIZES ARE FOR ONE SET OF OUTLETS
  - WALL MOUNTED OUTLETS
  - OUTLETS IN OWNER-PROVIDED, CEILING-MOUNTED BOOM.
  - CONNECT INSTRUMENT AIR TO BOOM/COLUMN PNEUMATIC BRAKE. PROVIDE AND INSTALL 150 PSIG TO 45 PSIG PRESSURE REGULATOR ON INSTRUMENT AIR INLET

**PLUMBING FIXTURE SCHEDULE**

ID	FIXTURE	CW (IN)	HW (IN)	W (IN)	V (IN)	NOTES	FIXTURE SPECIFICATIONS
WC-1	WATER CLOSET	1	-	4	2	FLOOR MOUNTED, FLUSH VALVE, ADA	WATER CLOSET (FLOOR MOUNTED, FLUSH VALVE, ADA COMPLIANT): KOHLER K4405, HIGH-LINE TOILET, VITREOUS CHINA, 1.28 GALLON FLUSH, ELONGATED BOWL DESIGN, 17-1/2" HIGH, SIPHON JET FLUSHING, 2-1/4" PASSAGEWAY, 1-1/2" TOP SPUD AND 5/248 BOLT CAPS. BEMIS 3155-C "DURAGUARD" WHITE, SOLID PLASTIC, OPEN-FRONT SEAT, LESS COVER. SLOAN ROYAL MODEL 111-1-28 LOW CONSUMPTION 1.28 GPF MANUAL FLUSH VALVE.
L-1	LAVATORY	1/2	1/2	1 1/2	1 1/2	WALL HUNG, ADA, WRIST BLADES	PRIVATE LAVATORY (WALL HUNG, ADA): KOHLER K2006, KINGSTON, 21 X 18-INCH WALL HUNG, VITREOUS CHINA LAVATORY, CHICAGO NO. 786-GNFCABCP CERAMIC QUARTER TURN OPERATING CARTRIDGE WITH 4" WRIST BLADE HANDLES AND 8" RIGID GOOSENECK SPOUT WITH 1.0 GPM LAMINAR FLOW CONTROL, INSERT IN SPOUT INLET, OPEN-GRID STRAINER, POWERS 480 TEMPERING VALVE UNDER COUNTER THERMOSTATIC MIXING VALVE ON HOT WATER LINE WITH ZURN MODEL SXL STRAINERS AND ADDITIONAL ZURN MODEL ADXL CHECK VALVES ON HOT AND COLD WATER INLETS, FLEXIBLE SUPPLIES WITH LOOSE KEY CONTROL, 1/4" TURN STOPS, CAST BRASS P-TRAP WITH CLEANOUT PLUG, CONCEALED ARM CHAIR CARRIER WITH FOOT SUPPORT, PROVIDE ADA COMPLIANT UNDER COUNTER PIPING VANDAL PROTECTION BY TRUE-BRO IMPACT RESISTANT LAV GUARD WITH TAMPER PROOF FASTENERS. MAINTAIN REQUIRED ADA CLEARANCES. PROVIDE 120V AC TRANSFORMER FOR SINGLE OR MULTIPLE FAUCETS AS REQUIRED.
S-1	WORK SINK	1/2	1/2	2	1 1/2	WALL HUNG, ADA, SENSOR FAUCET	KOHLER K2007, KINGSTON, 21 X 18-INCH WALL HUNG, VITREOUS CHINA LAVATORY, CHICAGO 116.428 AB.1 SENSOR FAUCET WITH ADJUSTABLE TEMPERATURE CONTROL MIXER, 1.5 GPM GOOSENECK FAUCET WITH FLOW CONTROL IN BASE OF SPOUT, PROVIDE WITH 12 V AC TRANSFORMER, OPEN-GRID STRAINER, LFUSG-B-M2 THERMOSTATIC MIXING VALVE WITH SLOAN BASYS ETF-470-A SINGEL CHECKS IN HOT AND COLD SUPPLIES, FLEXIBLE SUPPLIES WITH LOOSE KEY CONTROL, 1/4" TURN STOPS, CAST BRASS P-TRAP WITH CLEANOUT PLUG, CONCEALED ARM CHAIR CARRIER WITH FOOT SUPPORT, PROVIDE ADA COMPLIANT UNDER COUNTER PIPING VANDAL PROTECTION BY TRUE-BRO IMPACT RESISTANT LAV GUARD WITH TAMPER PROOF FASTENERS. MAINTAIN REQUIRED ADA CLEARANCES.
S-2	WORK SINK	1/2	1/2	2	1 1/2	WALL HUNG, GOOSENECK, WRIST BLADES, ADA	LAVATORY: KOHLER K2030, GREENWICH, 20" X 18", VITREOUS CHINA, WITH FRONT OVERFLOW, 4" CENTERS, CHICAGO 786-GNFCABCP FAUCET, WITH WRIST BLADE HANDLES, GN8 RIGID/SWING GOOSENECK SPOUT WITH 1.5 GPM LAMINAR FLOW CONTROL IN SPOUT INLET, FIX SPOUT RIGID, WATTS LFUSG-B-M2 THERMOSTATIC MIXING VALVE WITH SLOAN BASYS ETF-470-A SINGEL CHECKS IN HOT AND COLD SUPPLIES, LOOSE KEY ANGLE STOPS WITH CHROME PLATED COPPER SUPPLIES AND 17 GA. CAST BRASS, CHICAGO 327-ACP OPEN-GRID STRAINER AND CAST BRASS P-TRAP WITH CLEAN OUT PLUG, SMITH 0700-Z CONCEALED ARM CHAIR CARRIER WITH FOOT SUPPORT, PROVIDE ADA COMPLIANT UNDER COUNTER PIPING WRAP BY TRUE-BRO, COLOR TO BE WHITE.
S-3	WORK SINK	1/2	1/2	2	2	SS COUNTER MOUNT, GOOSENECK, WRIST BLADES	WORK SINK: JUST SL-2122-A-GR 18" X 18" X 7-1/2" DEEP BOWL (INSIDE DIMENSIONS), COUNTER MOUNT SINGLE COMPARTMENT 18 GA. STAINLESS STEEL SINK, 8" CENTERS DRILLING, PROVIDE CHICAGO 786-GNFCABCP FAUCET, NO. 317 4" WRIST BLADES, GN8 RIGID/SWING CONVERTIBLE GOOSE NECK WITH 1.5 GPM FC LAMINAR FLOW CONTROL IN SPOUT BASE AND PLAIN END SPOUT RING, FIX SPOUT RIGID, PROVIDE FLEXIBLE STAINLESS STEEL SUPPLIES WITH LOOSE KEY ANGLE STOPS, JUST J-35 STAINLESS STEEL CUP STRAINER AND CAST BRASS P-TRAP WITH CLEAN-OUT PLUG.
SH-1	SHOWER VALVE	1/2	1/2	-	-	WALL MOUNTED PRESSURE BALANCING VALVE, ADA	STAFF SHOWER (ADA COMPLIANT): SYMMONS 5505-T600B-36-V-X-231-1.5 TEMP/TROL, PACKAGED LOW FLOW 1.5 GPM SHOWER UNIT WITH HAND SPRAY AND HOSE, PRESSURE BALANCE PISTON OPERATED VALVE, 4-231 SUPER SHOWERHEAD WITH ADJUSTABLE SPRAY, 300S ARM, FS HAND SPRAY UNIT WITH FLEXIBLE HOSE, SYMMONS 36" T600B ADA GRAB AND SLIDE BAR FOR HAND SHOWER MOUNTING, WALL CONNECTION AND IN-LINE VACUUM BREAKER, 4-458 LEVERTROL DIVERTER, DOUBLE OUTLET WITH VOLUME CONTROL, FOR SHOWER HEAD AND HAND SPRAY.
SS-1	SERVICE SINK	1/2	1/2	3	1 1/2	FLOOR MOUNTED CORNER	SERVICE SINK (FLOOR MOUNTED): KOHLER K6710, WHITBY, 28 X 28-INCH, ENAMELED CAST IRON FLOOR-MOUNTED CORNER MODEL, K9146-3" DRAIN WITH STRAINER, NO. K8940 REMOVABLE VINYL-COATED RIM GUARD, CHICAGO 897 FAUCET WITH VACUUM BREAKER, SCREWDRIVER STOPS IN SHANKS, 5 FOOT RUBBER HOSE AND 653 WALL HOOK.
FD-1	FLOOR DRAIN	-	-	2	1 1/2	GENERAL USE FLOOR DRAIN	FLOOR DRAIN: SMITH FIGURE 2005YB FLOOR DRAIN WITH CAST IRON BODY AND FLASHING COLLAR WITH 6-INCH SQUARE NICKEL BRONZE ADJUSTABLE STRAINER HEAD WITH SECURED GRATE. PROVIDE TRAP GUARD TYPE TRAP SEAL DEVICE.
FD-2	SHOWER DRAIN	-	-	2	1 1/2	CHROME PLATED GRATE	SHOWER DRAIN: SMITH 2005Y-CP FLOOR DRAIN WITH CAST IRON BODY AND FLASHING COLLAR WITH 6-INCH SQUARE CHROME PLATED ADJUSTABLE STRAINER STRAINER HEAD WITH SECURED GRATE.
FS-1	FLOOR SINK	-	-	3	1 1/2	FOR STERILIZER AND WASHER	FLOOR SINK: SMITH FIGURE 310Y CAST IRON FLANGED RECEPTOR WITH ACID RESISTANT INTERIOR COATING, NICKEL BRONZE RIM AND SECURED 1/2 GRATE AND ALUMINUM DOME BOTTOM STRAINER.
RD-1	ROOF DRAIN	-	-	-	-	SEE PLANS FOR SIZE	ROOF DRAIN: SMITH FIGURE 1010Y-R-C-OD CAST IRON BODY WITH COMBINED FLASHING CLAMP AND CAST IRON GRAVEL STOP, CAST IRON DOME, EXTENSION, SUMP RECEIVER AND UNDERDECK CLAMP.
RDD-1	ROOF DRAIN OVERFLOW	-	-	-	-	SEE PLANS FOR SIZE	ROOF DRAIN: SMITH FIGURE 1010Y-R-C-OD CAST IRON BODY WITH COMBINED FLASHING CLAMP AND CAST IRON GRAVEL STOP, CAST IRON DOME, EXTENSION, SUMP RECEIVER AND UNDERDECK CLAMP, 2" WATER DAM.

- ALL UNDER GROUND WASTE AND VENT SHALL BE 2" OR GREATER PER DRAWINGS.
- PROVIDE SINK COMPLETE WITH ALL MOUNTED BED PAN WASHER WITH FOOT PEDAL CONTROLS

**MEDICAL GAS ALARM PANEL SCHEDULE**

SYMBOL	STATIONS MONITORED	LOCATION	SERVICES TO BE MONITORED						REMARKS
			OX	MA	MV	N2O	CO2	N	
MA-7	PRE/POST 23 HR	REGISTRATION	X	--	X	--	--	--	1.2

- COORDINATE EXACT LOCATION WITH ARCHITECTURAL
- DEDICATED WIRING FROM SOURCE SIGNALS TO ALARM

**MEDICAL GAS VALVE SCHEDULE**

SYMBOL	AREA SERVED	PIPE SIZE							REMARKS
		OX	MA	MV	N	N2O	CO2	WAGD	
MV-6	PRE/POST 23 HR	--	3/4"	1-1/2"	--	--	--	--	1
MV-4	OPERATING ROOMS	1/2"	1/2"	1-1/4"	1/2"	1/2"	1/2"	3/4"	1.2

- WITH GAUGES
- STACKED VALVE BOXES: N2O, N, CO2 IN ONE BOX AND OX, MA, WAGD, MV IN THE OTHER. WRAP PIPING BEHIND THE VALVE BOX IN THE CONCEALED POCKET, AS REQUIRED TO FIT IN THE AVAILABLE HORIZONTAL DIMENSION OF THE WALL

SYMBOLS LEGEND REFERENCE AND LINE SYMBOLS. Table with 2 columns: SYMBOL, DESCRIPTION. Includes items like AS E-501, AS E-201, ROOM NAME, REVISION INDICATOR, EQUIPMENT INDICATOR, BREAK symbols, MATCH LINE, NEW LINE, HIDDEN FEATURES, DEMOLITION LINE, CONTRACT LIMIT, ELECTRICAL EQUIPMENT INDICATOR, EQUIPMENT INDICATOR, WIRING METHODS, BRANCH CIRCUIT, FLEXIBLE WIRING, WIRING AND/OR RACEWAY, CONDUIT STUB, CONDUIT & CONDUIT (CC) SCHEDULE INDICATOR, ADA ACCESS PUSH PLATE, JUNCTION BOX, JUNCTION BOX, SYSTEMS FURNITURE COMMUNICATION CONNECTION, JUNCTION BOX, SYSTEMS FURNITURE POWER CONNECTION, JUNCTION BOX, DUCT UNDERFLOOR, TRIPLE, DOUBLE OR SINGLE DUCT SYSTEM, PULL BOX, CABLE TRAY ABOVE ACCESSIBLE CEILING, WIREWAY, EARTH GROUND, JUNCTION BOX, CEILING, LADDER RACK, CABLE TRAY BELOW ACCESSIBLE FLOOR, MECHANICAL EQUIPMENT CONNECTION, ELECTRIC VEHICLE CHARGING STATION.

SYMBOLS LEGEND WIRING DEVICES. Table with 2 columns: SYMBOL, DESCRIPTION. Includes items like RECEPTACLE, DUPLEX, CEILING, RECEPTACLE, DUPLEX, DEDICATED CIRCUIT, RECEPTACLE, DUPLEX WITH GROUND FAULT CIRCUIT INTERRUPTER, DRINKING FOUNTAIN, RECEPTACLE, DUPLEX, SWITCHED, RECEPTACLE, DUPLEX, FLOOR, UNDER CARPET, RECEPTACLE, DUPLEX WITH GROUND FAULT CIRCUIT INTERRUPTER, WET LABEL, RECEPTACLE, DUPLEX, WEATHERPROOF, RECEPTACLE, DUPLEX ON EMERGENCY POWER, RECEPTACLE, DUPLEX, CONNECTED TO UPS, RECEPTACLE, DUPLEX WITH GROUND FAULT CIRCUIT INTERRUPTER, RECEPTACLE, DUPLEX WITH GROUND FAULT CIRCUIT INTERRUPTER, HOSPITAL GRADE, RECEPTACLE, DUPLEX WITH GROUND FAULT CIRCUIT INTERRUPTER, RECEPTACLE, DUPLEX WITH GROUND FAULT CIRCUIT INTERRUPTER, WEATHERPROOF, RECEPTACLE, DUPLEX, RECESSED, RECEPTACLE, DUPLEX, SWITCHED, RECESSED, RECEPTACLE, QUADRAPLEX, RECEPTACLE, QUADRAPLEX, HOSPITAL GRADE, RECEPTACLE, QUADRAPLEX, CONNECTED TO UPS, RECEPTACLE, QUADRAPLEX WITH GROUND FAULT CIRCUIT INTERRUPTER, RECEPTACLE, QUADRAPLEX WITH GROUND FAULT CIRCUIT INTERRUPTER, HOSPITAL GRADE, RECEPTACLE, QUADRAPLEX WITH GROUND FAULT CIRCUIT INTERRUPTER, SPECIAL PURPOSE, PROVIDE RECEPTACLE TO MATCH EQUIPMENT PLUG, RECEPTACLE, SPECIAL PURPOSE ON EMERGENCY POWER, RECEPTACLE, DRYER, RECEPTACLE, RANGE, MULTI-OUTLET ASSEMBLY, DROP CORD, THERMOSTAT, FLUSH FLOOR BOX, POWER POLE, FLUSH FIRE RATED POKE THRU, SWITCH, DIMMER, SWITCH, SINGLE POLE, SWITCH, DOUBLE POLE, SWITCH, THREE-WAY, SWITCH, FOUR-WAY, SWITCH, DOOR, SWITCH, KEY OPERATED, SWITCH, LOW VOLTAGE MASTER, SWITCH, MOMENTARY, SWITCH, OCCUPANCY SENSOR, SWITCH, PILOT LIGHT, SWITCH, TIMER OPERATED, SWITCH, WEATHERPROOF, RECEPTACLE, DUPLEX, TAMPER RESISTANT, RECEPTACLE, QUADRAPLEX WITH GROUND FAULT CIRCUIT INTERRUPTER, HOSPITAL GRADE, RECEPTACLE, QUADRAPLEX WITH GROUND FAULT CIRCUIT INTERRUPTER, HOSPITAL GRADE ON EMERGENCY POWER, RECEPTACLE, DUPLEX WITH GROUND FAULT CIRCUIT INTERRUPTER, CONNECTED TO UPS, RECEPTACLE, DUPLEX, RECESSED, RECEPTACLE, DUPLEX, RECESSED, AUTOMATICALLY CONTROLLED THROUGH TIME OR OCCUPANCY BASED CONTROLS, RECEPTACLE, QUADRAPLEX, RECESSED, AUTOMATICALLY CONTROLLED THROUGH TIME OR OCCUPANCY BASED CONTROLS, INDICATES A RECEPTACLE IS AUTOMATICALLY CONTROLLED THROUGH TIME OR OCCUPANCY BASED CONTROLS.

SYMBOLS LEGEND SITE ELECTRICAL AND COMMUNICATIONS UTILITIES. Table with 2 columns: SYMBOL, DESCRIPTION. Includes items like THIN LINE, SINGLE PHASE, TWO-CONDUCTOR, LIGHTNING ARRESTOR, UTILITY POLE, UTILITY, DISTRIBUTION SWITCH, UTILITY, PRIMARY ELECTRICAL HAND HOLE, UTILITY SERVICES, MANHOLE, UTILITY, COMMUNICATIONS MANHOLE, UTILITY, ELECTRICAL MANHOLE, UTILITY, TELEPHONE MANHOLE, PRECAST CONCRETE, COMMUNICATION VAULT, PRECAST CONCRETE, ELECTRICAL VAULT, PRECAST CONCRETE, TELEPHONE VAULT, PRECAST CONCRETE, MANHOLE, TRANSFORMER VAULT, PRECAST CONCRETE, TRANSFORMER PAD, HAND HOLE, SUBSTATION, TRANSFORMER, FUSE WITH RATING, DISCONNECT, FUSED, DISCONNECT, NONFUSED, DISCONNECT WITH FUSE AND MOTOR STARTER COMBINATION, OVERLOAD RELAY, STARTER, CIRCUIT BREAKER, MOLDED CASE, CIRCUIT BREAKER, MOLDED CASE WITH SHUNT TRIP, CIRCUIT BREAKER, MOTOR CIRCUIT PROTECTION, CIRCUIT BREAKER, SOLID STATE, CIRCUIT BREAKER, SOLID STATE WITH GROUND FAULT PROTECTION, MOTOR, COMBINATION RESIDENTIAL EXHAUST FANLIGHT, EXHAUST FAN OUTLET, HEATER, ELECTRIC RESISTANCE, TRANSFORMER, TRANSFORMER, CURRENT, BATTERY, CAPACITOR, DELTA CONNECTION, WYE CONNECTION, PANELBOARD, PANELBOARD WITH MAIN LUGS ONLY, PANELBOARD WITH MAIN CIRCUIT BREAKER, PANELBOARD WITH MAIN LUGS ONLY AND SURGE PROTECTION WITH CIRCUIT BREAKER.

SYMBOLS LEGEND ELECTRICAL POWER AND DISTRIBUTION. Table with 2 columns: SYMBOL, DESCRIPTION. Includes items like CT CABINET PER UTILITY'S REQUIREMENTS, TRANSFER SWITCH, DIGITAL MULTIMETER, SERVICE ENTRANCE SURGE PROTECTION, GENERATOR, ANNUNCIATOR, GENERATOR, POWER, METER, BROAD BAND FILTER, VARIABLE FREQUENCY MOTOR CONTROLLER, DIODE, AERIAL SERVICE WEATHER HEAD, DISCONNECT SWITCH, STARTER, COMBINATION WITH DISCONNECT SWITCH, STARTER OR MOTOR CONTROLLER, PUSHBUTTON, PUSHBUTTONS, MOTOR CONTROL, PANELBOARD CABINET, FLUSH MOUNTED, PANELBOARD CABINET, SURFACE MOUNTED, 1 SECTION, PANELBOARD CABINET, SURFACE MOUNTED, 2 SECTION, DISTRIBUTION PANEL OR SWITCHBOARD, LIGHTING RELAY, LIGHTING CONTROL STATION, DIMMING ENTRY STATION, CENTRAL PROCESSOR UNIT, SWITCH, TOGGLE MOTOR STARTER WITH OVERLOAD PROTECTION, TRANSFORMER, BUSWAY, DUCT, TROLLEY, RELAY CONTACT, RELAY CONTACT, PUSHBUTTON, PUSHBUTTON, PRESSURE SWITCH, PRESSURE SWITCH, SWITCH, SWITCH, SWITCH, SWITCH, SWITCH, SPECIALIZED TRANSFER SWITCH, ACCESSIBLE DOOR ENTRY PUSH PLATE OPERATOR, CIRCUIT BREAKER, DRAW OUT, GENERATOR ENGINE START MONITORING SYSTEM GENERATOR MODULE, GENERATOR ENGINE START MONITORING SYSTEM ATS MODULE, PHASE ROTATION MONITOR, PANELBOARD, PANELBOARD WITH MAIN CIRCUIT BREAKER, PANELBOARD WITH MAIN AND SUB FEED CIRCUIT BREAKER, PANELBOARD WITH MAIN LUGS ONLY AND SURGE PROTECTION WITH CIRCUIT BREAKER.

ABBREVIATIONS. Table with 2 columns: SYMBOL, DESCRIPTION. Lists various abbreviations such as SINGLE POLE, SINGLE-PHASE, TWO-CONDUCTOR, KILOVOLT, KILOWATT AMPERE, KILOWATT AMPERE REACTIVE, KILOWATT HOUR, KILOWATT HOUR, LIGHT EMITTING DIODE, LIQUID TIGHT FLEXIBLE METAL CONDUIT, LIQUID TIGHT FLEXIBLE NONMETALLIC CONDUIT, LIQUID TIGHT FLEXIBLE METAL CONDUIT, LIQUID TIGHT FLEXIBLE NONMETALLIC CONDUIT, LOW PRESSURE SODIUM LOCKED ROTOR AMPS, LIGHTING, LOW VOLTAGE, ANTENNA TELEVISION SYSTEM, MAXIMUM, METAL CLAD, MAIN CIRCUIT AMPS, MAIN CIRCUIT BREAKER, MAIN CIRCUIT CENTER, MOTOR CIRCUIT PROTECTION, MAIN DISTRIBUTION PANEL, MOTOR GENERATOR, MANHOLE, MINIMUM, NIGHT LIGHT, MAIN LUGS ONLY, MAXIMUM OVERCURRENT PROTECTION, MANUAL TRANSFER SWITCH, NOT APPLICABLE, NORMALLY CLOSED, NATIONAL ELECTRICAL CODE, NATIONAL ELECTRICAL MANUFACTURERS ASSOCIATION, NATIONAL FIRE PROTECTION ASSOCIATION, NOT IN CONTRACT, OVER CURRENT PROTECTION, OVERCURRENT PROTECTION, CONTRACTOR FINISHED/OWNER INSTALLED, OWNER FINISHED/OWNER INSTALLED, NATIONAL FIRE PROTECTION ASSOCIATION, OFFICER, OBTAIN FROM PLANS, OVERHEAD (COILING) DOOR, OVERLOAD, PUSHBUTTON, POWER FACTOR, PHASE, PANEL, POTENTIAL TRANSFORMER, PAN/TILT/ZOOM, QUANTITY, REMOVE, REFLECTED CEILING PLAN, RIGID METAL CONDUIT, RIGID NONMETAL CONDUIT, REVOLUTIONS PER MINUTE, RELOCATE AND RELOCATE START/STOP, SHORT CIRCUIT AMPS, STANDARD COLOR AS SELECTED BY ARCHITECT, SQUARE FOOT (FEET), STANDARD FINISH AS SELECTED BY ARCHITECT, SURGE PROTECTIVE DEVICE, SINGLE POLE, DOUBLE THROW, SPECIFICATION, SINGLE POLE, SINGLE THROW, SINGLE THROW, SWITCHBOARD, SWITCHGEAR, TWIST LOCK, TELEPHONE POLE, TWISTED PAIR, TELEPHONE TERMINAL BOARD, TELEVISION, TRANSIENT VOLTAGE SURGE SUPPRESSER, TYPICAL, UNDERFLOOR, UNDERGROUND, UNINTERRUPTIBLE POWER SUPPLY, VOLTS, VOLT AMPERE, VARIABLE FREQUENCY MOTOR CONTROLLER, WITH, WITHOUT, WEATHERPROOF, TRANSFORMER.

GENERAL ELECTRICAL NOTES. 1. CLARIFICATION METHODS: AT THE TIME OF BIDDING, BIDDERS SHALL FAMILIARIZE THEMSELVES WITH THE DRAWINGS AND SPECIFICATIONS... 2. OWNER FURNISHED ITEMS: THE OWNER WILL FURNISH MATERIAL AND EQUIPMENT AS INDICATED IN THE CONTRACT DOCUMENTS... 3. EXPOSED STRUCTURE AREAS (EXCLUDING MECHANICAL, ELECTRICAL, AND COMMUNICATION SPACES)... 4. SUBMITTALS: PROVIDE ORIGINAL ELECTRONIC PDF FORMAT, BOUND, BOOKMARKED... 5. REFLECTED CEILING PLANS: COORDINATE THE LOCATION OF LIGHT FIXTURES WITH THE ARCHITECTURAL REFLECTED CEILING PLANS... 6. ALL WORK SHALL BE DONE ACCORDING TO THE CURRENT NATIONAL ELECTRIC CODE (NEC), IBC, NFPA, AND IFC... SITE COORDINATION. THE LOCATION, CAPACITY, AND VOLTAGE OF THE LINES ARE ALL IN ACCORDANCE WITH DATA GIVEN THIS OFFICE BY THE UTILITY COMPANY... TELEPHONE UTILITY. PERSON CONTACTED: - DATE: - PHONE NUMBER: - ADDRESS: - EMAIL: - CENTURYLINK. PERSON CONTACTED: - DATE: - PHONE NUMBER: - ADDRESS: - EMAIL: - AT&T BROADBAND SERVICES. PERSON CONTACTED: - DATE: - PHONE NUMBER: - ADDRESS: - CITY, STATE, ZIP: - EMAIL: - TYPE OF UTILITY. PERSON CONTACTED: - DATE: - PHONE NUMBER: - ADDRESS: - CITY, STATE, ZIP: - EMAIL: - ELECTRICAL SHEET INDEX. SHEET INDEX, ABBREVIATIONS, AND GENERAL NOTES. SYMBOLS LEGEND. PANEL SCHEDULES. TYPICAL MOUNTING HEIGHT DETAILS. DEMOLITION POWER PLAN - LEVEL 02. DEMOLITION LIGHTING PLAN - LEVEL 02. POWER PLAN - LEVEL 02. ENLARGED TYPICAL POWER PLANS. ONE-LINE DIAGRAM. LIGHTING PLAN - LEVEL 02. TELECOM DETAILS. INTERIOR LIGHTING FIXTURE SCHEDULE. LIGHTING CONTROL SCHEDULES. TELECOM SCHEDULES AND NOTES. TELECOM PLAN - LEVEL 02. ENLARGED TELECOM PLANS. TELECOM EQUIPMENT RACK ELEVATIONS. TELECOM DETAILS. TELECOM EQUIPMENT RACK GROUPING DETAIL. TELECOM RISER DIAGRAMS. LEVEL 2 AUXILIARY PLAN. AUXILIARY DIAGRAMS. ACCESS CONTROL DOOR SCHEDULE. LEVEL 2 SYSTEMS PLAN. SYSTEMS DIAGRAMS. LEVEL 2 FIRE ALARM PLAN. FIRE ALARM RISER.

### SYMBOLS LEGEND

SYMBOL	DESCRIPTION
<b>LIGHTING (REFER TO FIXTURE SCHEDULE FOR SYMBOLS)</b>	
01 (W-3)	FIXTURE IDENTIFICATION (W-3) INDICATES FIXTURE TYPE AS SCHEDULED.
02 (W-3)	FIXTURE IDENTIFICATION, EMERGENCY WITH BATTERY PACK, CONNECTED TO GENERATOR AS INDICATED: (W-3) INDICATES FIXTURE TYPE AS SCHEDULED.
03 EM	EMERGENCY.
04 NL	NIGHT LIGHT: DO NOT SWITCH.
05 ↑	EGRESS DIRECTION ARROW (EXIT SIGNS).
06 LV	LOW VOLTAGE LIGHTING TRANSFORMER.
07	EXIT SIGN: SINGLE FACE, CEILING MOUNTED
08	EXIT SIGN: SINGLE FACE, WALL MOUNTED
09	EXIT SIGN: DOUBLE FACE, CEILING MOUNTED
10	EXIT SIGN: DOUBLE FACE, WALL MOUNTED
<b>LIGHTING CONTROL</b>	
01 *	OCCUPANCY SENSOR, DUAL TECHNOLOGY, OMNI-DIRECTIONAL, CEILING.
02 *	OCCUPANCY SENSOR, DUAL TECHNOLOGY, WALL.
03	OCCUPANCY SENSOR, DUAL TECHNOLOGY, DIRECTIONAL.
04 *	OCCUPANCY SENSOR, ULTRASONIC, OMNI-DIRECTIONAL, CEILING.
05	OCCUPANCY SENSOR CONTROL RELAY.
06 *	VACANCY SENSOR, DUAL TECHNOLOGY, OMNI-DIRECTIONAL, CEILING.
07 *	VACANCY SENSOR, DUAL TECHNOLOGY, WALL.
08 P	PHOTOCELL.
09 TC	TIME CLOCK.
10 HR	HOUSE RELAY SCHEDULE INDICATOR.
11 101	LITE TOUCH STATION INDICATOR.
12	CEILING FAN.
13 SP	OCCUPANCY SENSOR, SWITCH PACK.
14	SWITCH/OCCUPANCY SENSOR COMBO, DUAL TECHNOLOGY, WALL.
15	SWITCH/VACANCY SENSOR COMBO, DUAL TECHNOLOGY, WALL.
16	DIMMER SWITCH/OCCUPANCY SENSOR COMBO, DUAL TECHNOLOGY, WALL.
17	DIMMER SWITCH/VACANCY SENSOR COMBO, DUAL TECHNOLOGY, WALL.
18 a,b	LOW VOLTAGE DIGITAL LIGHTING CONTROL SWITCH: LETTER "a,b" INDICATES ZONING WHERE SHOWN (REFER TO PLANS, SCHEDULES, AND DETAILS FOR EXACT BUTTON CONFIGURATION AND PROGRAMMING REQUIREMENTS)
19 DC	DIGITAL LIGHTING DIMMING CONTROLLER
20 LC	DIGITAL PLUG LOAD CONTROLLER
21 LS	LIGHTING NETWORK SWITCH.
22 NR	LIGHTING NETWORK ROUTER.
23 RC	DIGITAL LIGHTING ROOM CONTROLLER
24 SM	LIGHTING NETWORK SEGMENT MANAGER
25	LIGHTING SPACE CONTROL TYPE: X INDICATES TYPE. SEE SCHEDULE / DIAGRAM.
<b>STRUCTURED CABLING</b>	
01 X	TELEPHONE, WALL MOUNTED ("X" INDICATES QUANTITY OF CABLES)
02 (W)	DATA CONNECTION: WIRELESS ACCESS POINT (WAP), REQUIRES (2) DATA DROPS PER DEVICE
03 W	TELEPHONE, WALL MOUNTED: WALL PHONE.
04 X	OUTLET, DATA COMMUNICATION ("X" INDICATES QUANTITY OF CABLES)
05	OUTLET, BUILDING STANDARD COMBINATION TELEPHONE/ DATA COMMUNICATION.
06	TWO-WAY EMERGENCY COMMUNICATION DEVICE PER IBC, WALL MOUNTED IN RECESSED BOX.
07	TELEPHONE TERMINAL BOARD, FIRE TREATED PLYWOOD PAINTED.
08	LAN RACK, FLOOR STANDING.
09	DATA CABLE, CATEGORY 6A (ONE-LINE DIAGRAM).
10	VOICE CABLE, CATEGORY 3 (ONE-LINE DIAGRAM).
<b>STRUCTURED CABLING IHC</b>	
01	IHC COMMUNICATIONS DEVICE (1 DATA).
02	IHC COMMUNICATIONS DEVICE (1 DATA / 1 ANALOG).
03	IHC COMMUNICATIONS DEVICE (1 DATA WALL PHONE).
04	IHC COMMUNICATIONS DEVICE (2 DATA).
05	IHC COMMUNICATIONS DEVICE (3 DATA).
06	IHC COMMUNICATIONS DEVICE (4 DATA).
07	IHC COMMUNICATIONS DEVICE (6 DATA).
08	IHC COMMUNICATIONS DEVICE PHYSIOLOGICAL MONITOR (1 DATA).
09	IHC COMMUNICATIONS DEVICE WIRELESS ACCESS POINT (2 DATA).

### SYMBOLS LEGEND

SYMBOL	DESCRIPTION
<b>FIRE ALARM</b>	
01 FSA	FIRE SYSTEM ANNUCIATOR.
02 FCP	FIRE ALARM CONTROL PANEL, SEMI-RECESSED.
03 FFS	FIRE ALARM NOTIFICATION POWER SUPPLY.
04 FTR	FIRE ALARM TRANSPONDER OR TRANSMITTER.
05 HVA	SMOKE CONTROL PANEL.
06 C	AUTOMATIC DOOR CLOSERS: DOOR CLOSERS SHALL BE FURNISHED WITH DOOR HARDWARE AND CONNECTED TO BY FIRE ALARM INSTALLERS.
07 CM	CONTROL MODULE.
08 MM	MONITOR MODULE.
09 P	FIRE ALARM MANUAL PULL STATION.
10 R	SHUT DOWN RELAY. INSTALL RELAY IN CONTROL CIRCUIT OF EQUIPMENT TO BE CONTROLLED IN THE EVENT OF A FIRE.
11	MAGNETIC DOOR HOLDER.
12 LA	FIRE SERVICE OR EMERGENCY TELEPHONE STATION, ACCESSIBLE.
13 LH	FIRE SERVICE OR EMERGENCY TELEPHONE STATION, HANDSET.
14 LR	FIRE SERVICE OR EMERGENCY TELEPHONE STATION, JACK.
15	DETECTOR, SMOKE.
16 A	DETECTOR, SMOKE WITH AUXILIARY CONTACT.
17 BR	DETECTOR, SMOKE, BEAM RECEIVER.
18 BT	DETECTOR, SMOKE, BEAM TRANSMITTER.
19 E	DETECTOR, SMOKE, ELEVATOR RECALL DESIGNATION.
20 G	DETECTOR, SMOKE WITH GUARD.
21 R	DETECTOR, SMOKE, RESIDENTIAL.
22	DETECTOR, SMOKE, DUCT WITH HOUSING AND SAMPLING TUBE.
23	DETECTOR, HEAT.
24	INDICATOR LAMP.
25	STROBE.
26 75	STROBE: SUBSCRIPT INDICATES CANDELA RATING.
27 WP	ALARM, HORN/SPEAKER, WEATHERPROOF.
28	ALARM, HORN/STROBE, ONE ASSEMBLY.
29 75	ALARM, HORN/STROBE, ONE ASSEMBLY, SUBSCRIPT INDICATES CANDELA RATING.
30 C	ALARM, CHIME/STROBE, ONE ASSEMBLY.
31 G	ALARM, HORN/STROBE WITH GUARD, ONE ASSEMBLY.
32 M	ALARM, MINI HORN/STROBE, ONE ASSEMBLY.
33	SPEAKER, EVACUATION.
34 E	SPEAKER, EVACUATION, COMBINATION STROBE.
35	DETECTOR, FLOW SWITCH: FLOW SWITCHES SHALL BE PROVIDED AND INSTALLED WITH FIRE SPRINKLER SYSTEM AND SHALL BE CONNECTED TO LOCATIONS SHOWN ON THE FIRE SPRINKLER SHOP DRAWINGS.
36	DETECTOR, TAMPER SWITCH WITH VALVE: TAMPER SWITCHES SHALL BE PROVIDED AND INSTALLED WITH FIRE SPRINKLER SYSTEM AND SHALL BE CONNECTED TO LOCATIONS SHOWN ON THE FIRE SPRINKLER SHOP DRAWINGS.
37	SMOKE DAMPER.
38	FIRE AND SMOKE DAMPER.
39 FSD	BELL (GONG).
40 CO	DETECTOR, CARBON MONOXIDE.
41	DETECTOR, SMOKE/STROBE, RESIDENTIAL.
42 75	ALARM, HORN/STROBE: ONE ASSEMBLY, CEILING MOUNTED, SUBSCRIPT INDICATES CANDELA RATING.
43 75	ALARM, HORN, CEILING MOUNTED, SUBSCRIPT INDICATES CANDELA RATING.
44 75	ALARM, STROBE, CEILING MOUNTED, SUBSCRIPT INDICATES CANDELA RATING.

### SYMBOLS LEGEND

SYMBOL	DESCRIPTION
<b>TECHNOLOGY SYSTEMS</b>	
01	TECHNOLOGY SYSTEM CABLE. SEE SPECIFIC JOB EQUIPMENT LIST FOR APPLICABLE DESIGNATIONS. EXAMPLES: C = CONTROL CABLE G = GROUND CABLE, 10 AWG, 1 CONDUCTOR, GREEN INSULATED M = MICROPHONE CABLE S = SPEAKER CABLE, 70 VOLT SYSTEM Z = SPEAKER CABLE, 8 OHM SYSTEM
02	SPEAKER, CEILING MOUNTED.
03	SPEAKER, WALL MOUNTED.
04 S <sub>4</sub>	SPEAKER, 4".
05 S <sub>6</sub>	SPEAKER, 6".
06 S <sub>8</sub>	SPEAKER, 8".
07 S <sub>12</sub>	SPEAKER, 12".
08 S <sub>B</sub>	SPEAKER, BLIND MOUNT.
09 S <sub>E</sub>	SPEAKER, EXISTING.
10 S <sub>H</sub>	HORN.
11 S <sub>HW</sub>	HORN, WEATHER RESISTANT.
12 S <sub>M</sub>	SPEAKER, MASKING.
13 S <sub>R</sub>	SPEAKER, RECESSED.
14 S <sub>S</sub>	SPEAKER, SURFACE.
15 HXX	SPEAKER, USER DEFINED.
16	SPEAKER, HIGH FREQUENCY.
17	SPEAKER, LOW FREQUENCY.
18	SPEAKER ENCLOSURE (CLUSTER).
19	CALL SWITCH, INTERCOM.
20	MICROPHONE, TABLE OR LECTERN MOUNTED.
21	EQUIPMENT CABINET.
22	MEDIA CONNECTION PLATE.
23	AUDIO/VISUAL OUTLET.
24	SCREEN, PROJECTION, CEILING MOUNTED.
25	PROJECTOR, CEILING MOUNTED.
26	VIDEO CONFERENCING CAMERA.
27 CP	CONTROL PANEL.
28 M	MICROPHONE INPUT.
29 MD	MICROPHONE INPUT, FLOOR MOUNTED.
30 R	REMOTE CONTROL INPUT.
31	POWER SWITCH.
32 S	SPEAKER SWITCH OR INPUT.
33 SV	SOURCE SWITCH/VOLUME CONTROL.
34 T	TAPE RECORD OUTPUT.
35 V	VOLUME CONTROL.
36 HC	HUB CABINET.
37 M	VIDEO MONITOR.
38 ADA	AUDIO DISTRIBUTION AMPLIFIER.
39 APP	AUDIO PATCH PANEL.
40 CPW	CONNECTION PANEL.
41 DVD	DIGITAL VERSATILE DISC (DVD) PLAYER.
42 EP	ASSISTED LISTENING EMITTER PANEL.
43 K	SIGNAL RELAY DPDT WITH SOCKET.
44 LD	LINE DRIVER (VARIZONE DIGITAL PAGING SYSTEM).
45 PAM	POWER AMP MODULE (VARIZONE DIGITAL PAGING SYSTEM).
46 RDA	RGBHV DISTRIBUTION AMPLIFIER.
47 RM	REMOTE CONTROL PANEL.
48 RMS	RGBHV MATRIX SWITCHER.
49 TVSS	TRANSIENT VOLTAGE SURGE SUPPRESSER, AC LINE CONDITIONER.
50 VCR	VIDEO CASSETTE RECORDER.
51 VDA	COMPOSITE VIDEO DISTRIBUTION AMPLIFIER.
52 VMS	COMPOSITE VIDEO MATRIX SWITCHER.
53 VPP	VIDEO PATCH PANEL.
54 YMS	S-VIDEO MATRIX SWITCHER.
55 PA	AMPLIFIER (ONE-LINE DIAGRAM).
56 PB	POWER BRIDGE (VARIZONE DIGITAL PAGING SYSTEM).
57	TERMINATOR (VARIZONE DIGITAL PAGING SYSTEM).
58	DIODE (ONE-LINE DIAGRAM).
59 IM	TRANSFORMER, ISOLATION/MATCHING (ONE-LINE DIAGRAM).
60 MW	TRANSFORMER, # WATT (ONE-LINE DIAGRAM).
61	MICROPHONE, HANDHELD (ONE-LINE DIAGRAM).
62 A	AUXILIARY INPUT.
63 IR	INFRARED SENSOR.
64 CP	HDMI FEMALE RECEPTACLE. CONTRACTOR TO RUN HDMI CABLING BETWEEN HDMI RECEPTACLES IN A ROOM.

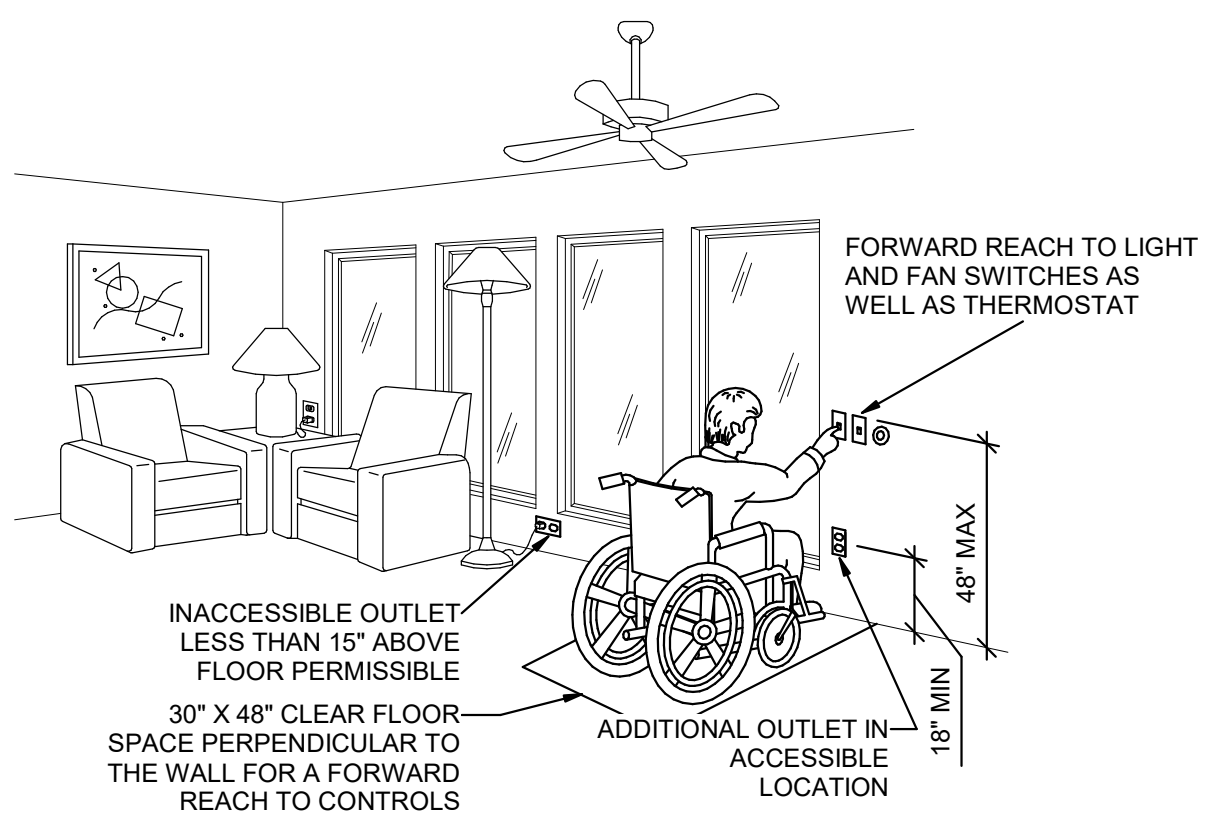
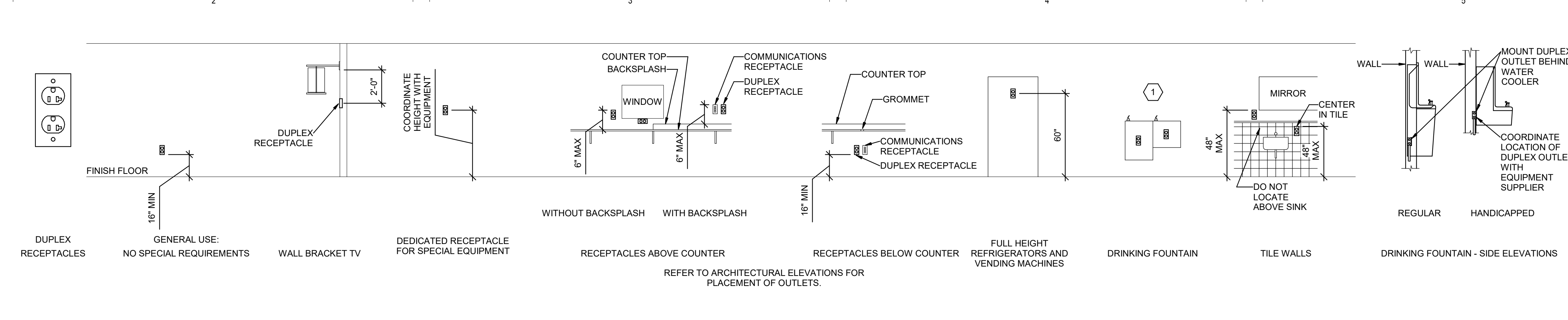
### SYMBOLS LEGEND

SYMBOL	DESCRIPTION
<b>CLOCK</b>	
01	CLOCK.
02	CLOCK, SURFACE WITH WIRE GUARD.
<b>NURSE CALL</b>	
01	JUNCTION BOX.
02	CORRIDOR LIGHT.
03	BATHROOM PULL CORD STATION.
04	DUTY STATION.
05	EMERGENCY ASSISTANCE CALL STATION.
06 CB	EMERGENCY ASSISTANCE CODE BLUE CALL STATION.
07	PATIENT STATION.
08	STAFF STATION.
09 NCM	TOUCH SCREEN NURSE CALL MASTER STATION.
10 ZLC	ZONE LIGHT CONTROLLER.
11 CU	NURSE CALL AREA CONTROL UNIT & POWER SUPPLIES.
<b>CCTV</b>	
01	CCTV CABLE, POWER.
02	CCTV CABLE, VIDEO SIGNAL.
03	CCTV HEADEND EQUIPMENT.
04 M	CCTV MONITOR.
05	CCTV CAMERA/ENCLOSURE WITH LENS, TYPICAL. SEE SCHEDULE.
06 PTZ	CCTV CAMERA WITH PAN, TILT AND ZOOM.
07	360° PANNING CAMERA TRANSVERSE ANGLE.
<b>SECURITY</b>	
01	SECURITY CABLE. SEE EQUIPMENT SCHEDULE FOR CABLE TYPE.
02 ACC	ACCESS CONTROL HEADEND EQUIPMENT.
03 CTR	SECURITY CONTROL PANEL.
04 SEC	INTRUSION DETECTION HEADEND EQUIPMENT.
05 #1	CARD ACCESS DOOR TYPE #1 OR AS NOTED. SEE SCHEDULE.
06 CR	CARD READER.
07 KCR	KEYPAD/CARD READER COMBINATION.
08	DOOR SWITCH, BALANCED MAGNETIC CONTROL.
09 ER	EXIT REQUEST.
10 RL	REMOTE DOOR RELEASE BUTTON.
11	BELL.
12	BUZZER.
13	BUZZER, COMBINATION BELL.
14	SENSOR, BURIED VEHICULAR.
15	SENSOR, GLASS BREAK.
16	SENSOR, VOLUMETRIC.
17 CA	CONTROLLED ACCESS POINT.
18	INTERCOM STATION.
19	DUAL TECHNOLOGY PASSIVE INFRARED SENSOR AND ULTRASONIC MOTION DETECTOR.
20	PASSIVE INFRARED SENSOR.
21 P	PANIC DURESS SWITCH.
22 U	ULTRASONIC MOTION DETECTOR.
23 AP	ANNUNCIATOR PANEL.
24 MSI	MASTER STATION, INTERCOM.
<b>TV DISTRIBUTION</b>	
01	TV DISTRIBUTION CABLE, INDIVIDUAL DROPS.
02 TR	TV DISTRIBUTION CABLE, TRUNK.
03 CMB	COMBINER.
04 DC	DIRECTIONAL COUPLER.
05 DA	DISTRIBUTION AMPLIFIER (ONE-LINE DIAGRAM).
06 SPL	SPLITTER (ONE-LINE DIAGRAM).
07	TV OUTLET.
08	SATELLITE ANTENNA.
09	TV ANTENNA (ONE-LINE DIAGRAM).
10	TERMINATOR, 75 OHM (TV DISTRIBUTION).



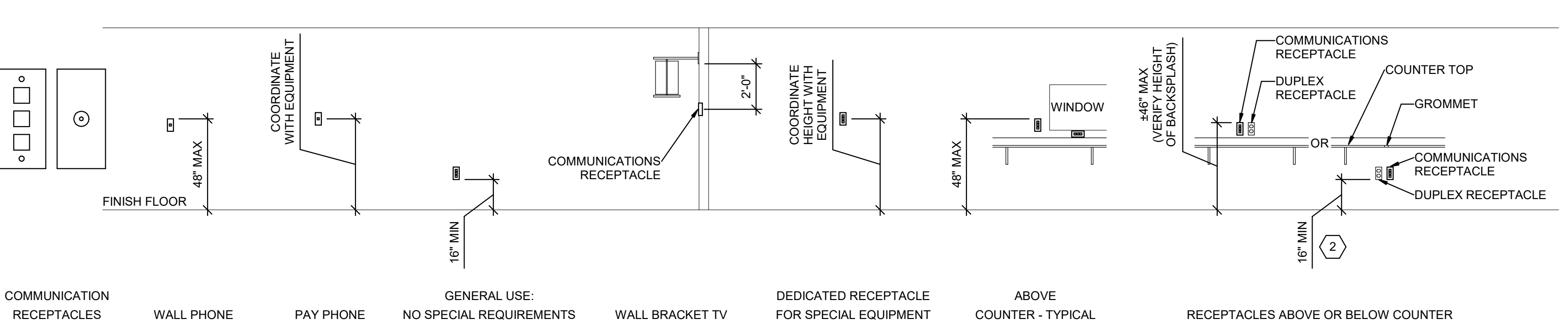
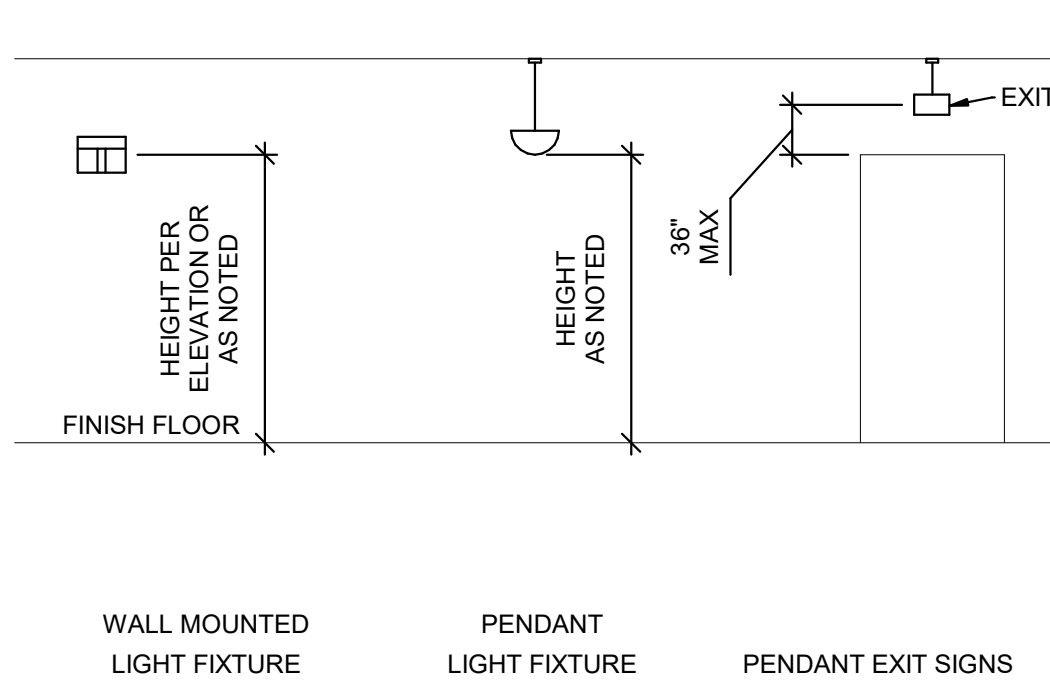


**E2 RECEPTACLE MOUNTING DETAILS**  
SCALE: NTS

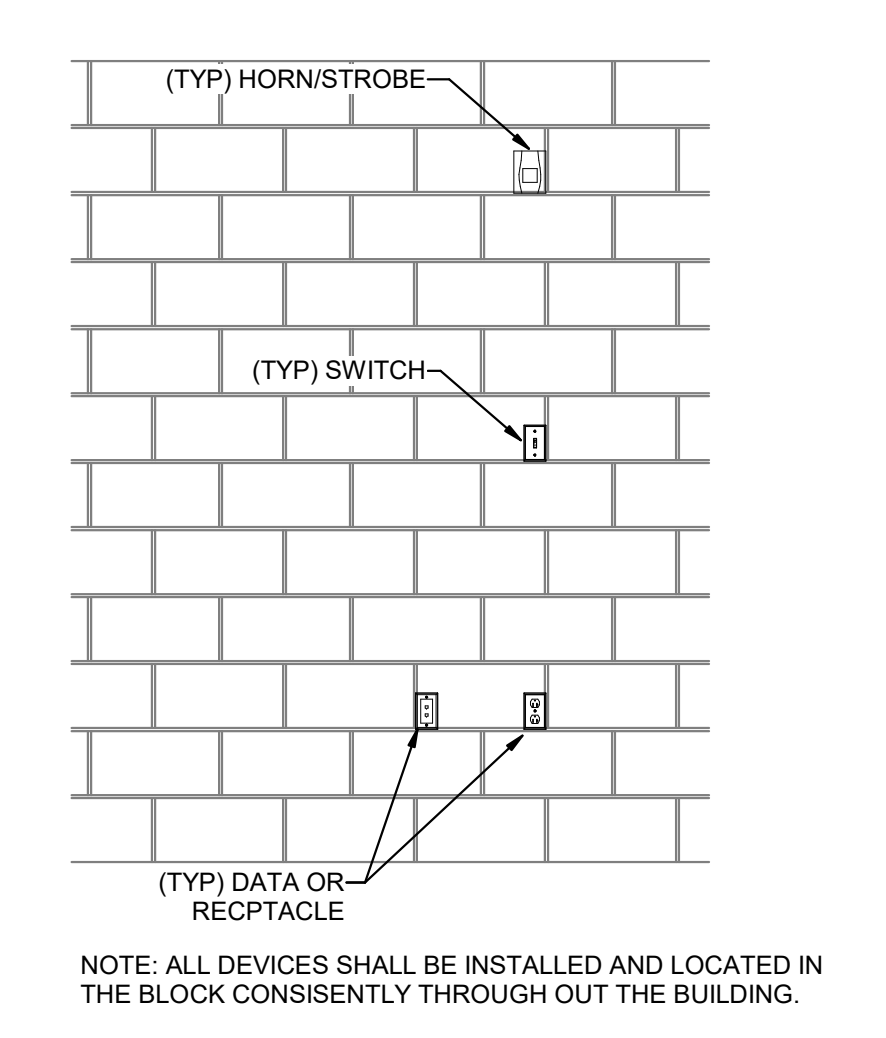


**D2 ADA DETAIL**  
SCALE: NTS

**D3 SWITCH MOUNTING DETAILS**  
SCALE: NTS

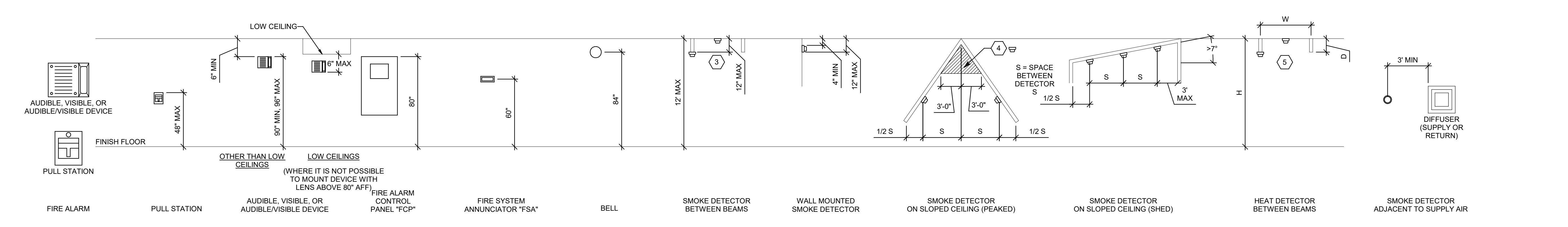


**C1 CMU DEVICE MOUNTING ALIGNMENT DETAIL**  
SCALE: NTS

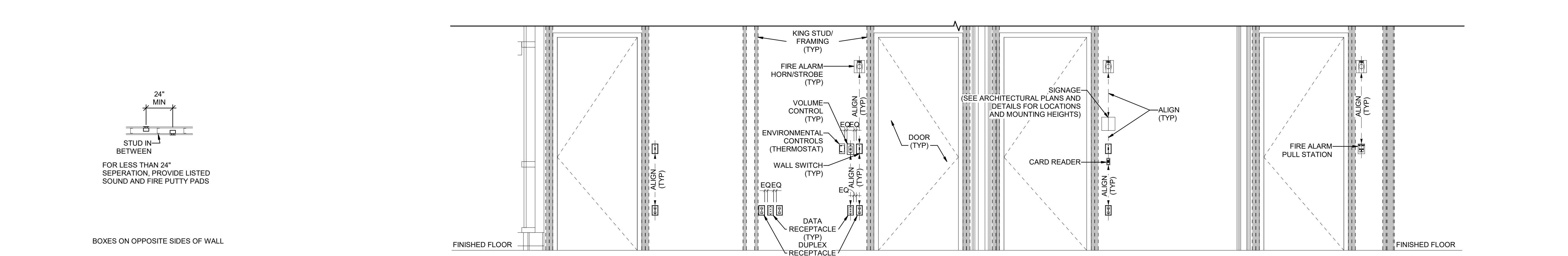


**C2 LIGHTING MOUNTING DETAILS**  
SCALE: NTS

**C3 COMMUNICATIONS MOUNTING DETAILS**  
SCALE: NTS

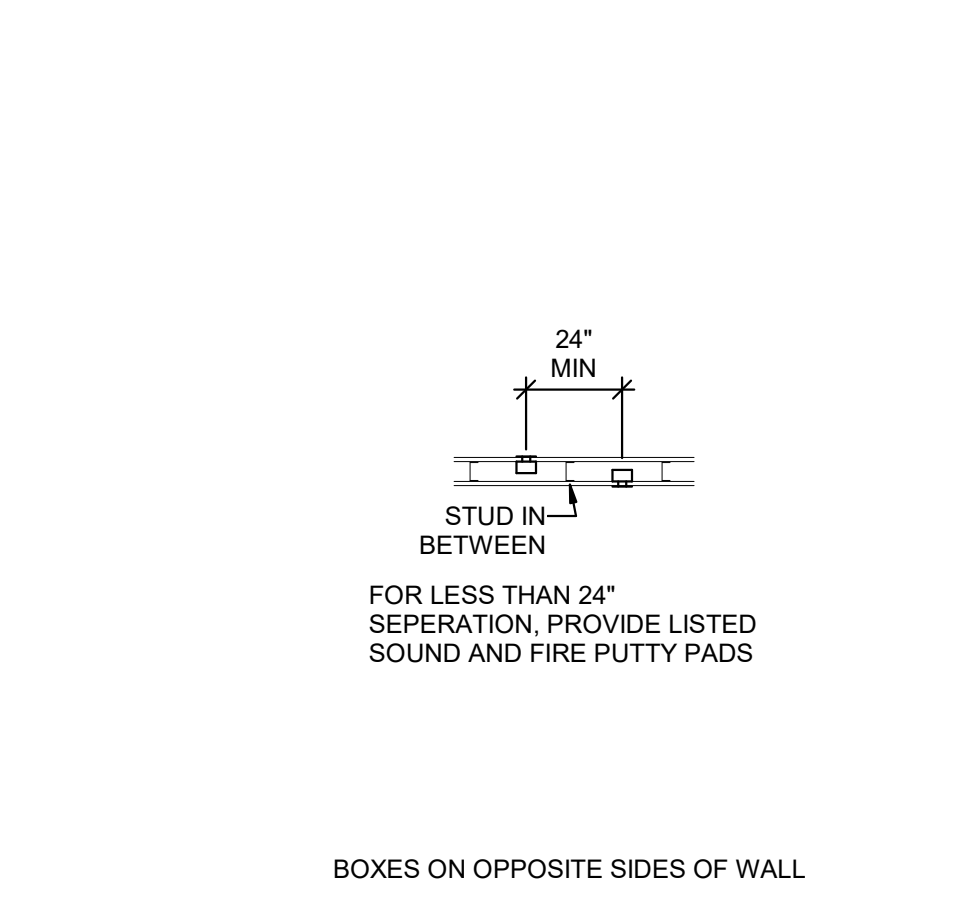


**B1 FIRE ALARM MOUNTING DETAILS**  
SCALE: NTS



**A1 BOX MOUNTING DETAILS**  
SCALE: NTS

**A2 TYPICAL WALL MOUNTED DEVICES ALIGNMENT DETAIL**  
SCALE: NTS



**GENERAL SHEET NOTES**

1. DETERMINE MOUNTING HEIGHTS OF ELECTRICAL AND ELECTRONIC EQUIPMENT IN THE FOLLOWING ORDER OF PRIORITY:
  - 1 - ELEVATIONS (ARCHITECTURAL, ELECTRICAL, MECHANICAL, ETC).
  - 2 - EQUIPMENT SHOP DRAWINGS.
  - 3 - FIELD INSTRUCTIONS.
2. LOCATE RECEPTACLES SERVING THE SAME TYPE OF USE AT A UNIFORM HEIGHT UNLESS DIRECTED OTHERWISE.
3. MECHANICAL, ELECTRICAL, AND COMMUNICATION ROOMS: COORDINATE LOCATION OF LIGHTING AND POWER RECEPTACLES WITH EQUIPMENT, PIPING, AND DUCTWORK. DO NOT INSTALL RECEPTACLES BEHIND EQUIPMENT OR WHERE OTHERWISE INACCESSIBLE. POSITION LIGHTING REGARDLESS OF WHERE SHOWN ON DRAWING TO PROVIDE PROPER ILLUMINATION.
4. MOUNT RECEPTACLE BOXES FOR SWITCHES AND RECEPTACLES WITH LONG AXIS OF THE DEVICE VERTICAL UNLESS OTHERWISE INDICATED.
5. SET BOXES WITH PLASTER RINGS FLUSH WITH FINISHED SURFACE.
6. LOCATE BOX COVERS OR DEVICE PLATES SO THEY WILL NOT SPAN DIFFERENT TYPES OF BUILDING FINISHES EITHER VERTICALLY OR HORIZONTALLY.
7. VERIFY ALL DOOR CONDITIONS ON ARCHITECTURAL DRAWINGS PRIOR TO INSTALLING SWITCHES.
8. LOCATE WIRING DEVICES WHICH ARE ADJACENT AND ARE COMPATIBLE VOLTAGES IN ONE PLATE.
9. WHERE DEVICES ARE LOCATED IN CLOSE PROXIMITY OF THE SAME VERTICAL PLANE, ALIGN DEVICES VERTICALLY PER THE TYPICAL WALL MOUNTED DEVICES ALIGNMENT DETAIL, UNLESS OTHERWISE INDICATED.

**SHEET KEYNOTES**

1. LOCATE RECEPTACLES BEHIND DRINKING FOUNTAINS.
2. REFER TO ARCHITECTURAL ELEVATIONS FOR PLACEMENT OF OUTLETS.
3. LOCATE AT BOTTOM OF BEAMS (OR JOISTS) OR AT CEILING. (REDUCE SPACING BY 3 PERPENDICULAR TO BEAM OR JOIST DIRECTION.) FOR OTHER CONDITIONS, REFER TO NFPA 72.
4. LOCATE DETECTOR ANYWHERE IN SHADED AREA BUT NOT IN TOP 4" OF PEAK.
5. LOCATE AT BOTTOM OF BEAMS IF  $DH < .1$  OR  $WH < .4$ , OTHERWISE, LOCATE IN BEAM POCKET. FOR  $D > 4$  REDUCE SPACING .33 PERPENDICULAR TO BEAMS.

REV	DATE	DESCRIPTION

VCBO NUMBER: 20320  
CLIENT NUMBER:  
DATE: OCT. 30 2020

C:\Users\baal\Documents\200446 ELEC CENTRAL\_baal\F07.rvt

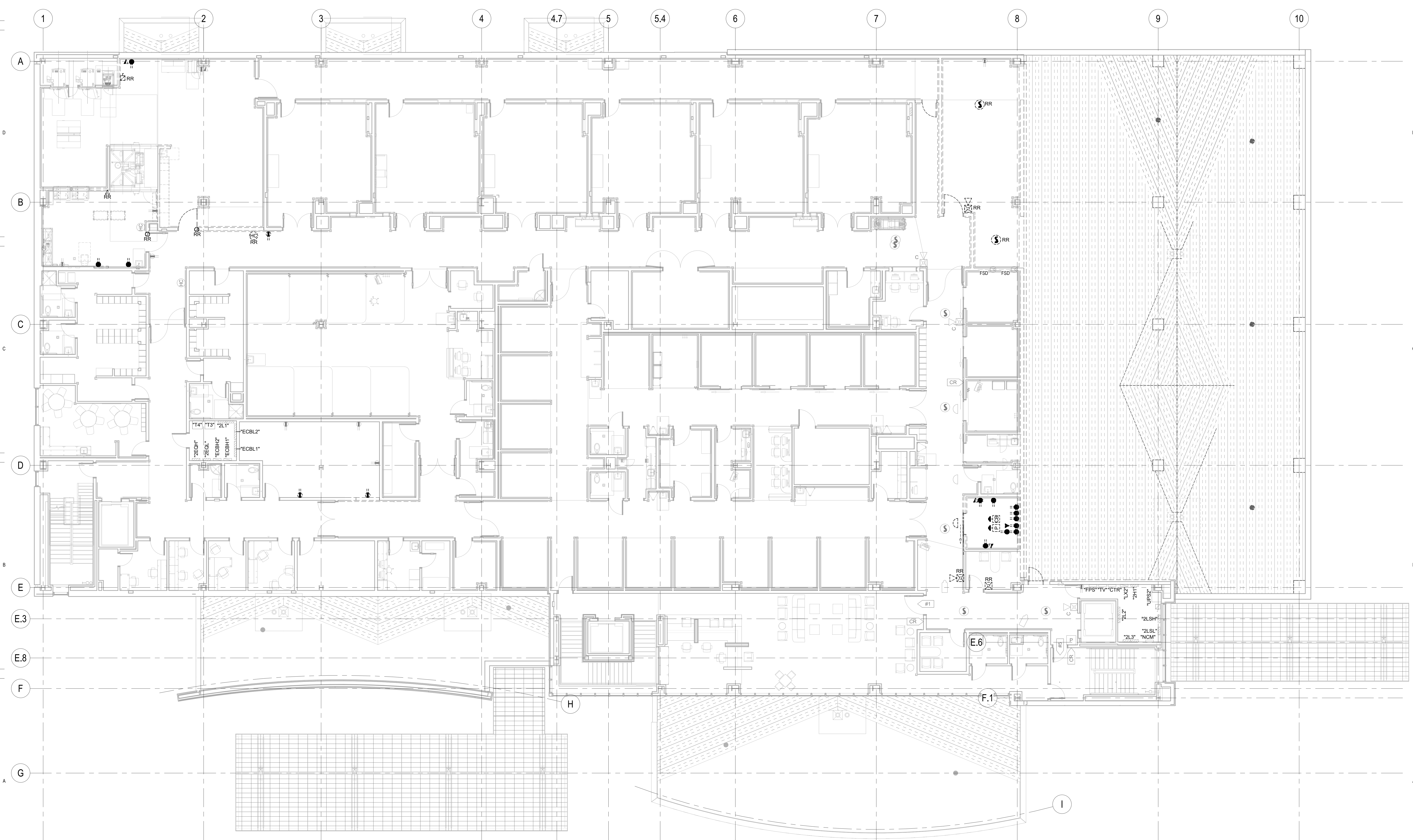
**SHEET KEYNOTES**

**GENERAL SHEET NOTES**

**GENERAL SHEET NOTES**

- 1 UNLESS NOTED OTHERWISE REMOVE ALL LIGHTING FIXTURES DEVICES AND EQUIPMENT SHOWN DASHED. REMOVE CONDUIT AND WIRING BACK TO PANELBOARD OF ORIGIN OR TO FIRST ACTIVE DEVICE THAT REMAINS.
- 2 SALVAGE ALL LIGHT FIXTURES, TWIST-LOCK RECEPTACLES AND WALL PLATES, CEILING SPEAKERS AND SECURITY AND FIRE ALARM DEVICES TO OWNER. PROTECT SALVAGED EQUIPMENT FROM DAMAGE.
- 3 PRIOR TO SUBMITTING BID, VISIT THE SITE AND FIELD VERIFY THE EXTENT OF ELECTRICAL DEMOLITION WORK TO MEET THE INTENT OF THE BID DOCUMENTS AND INCLUDE ALL COSTS IN BID.
- 4 PRIOR TO REMOVAL OF ANY ELECTRICAL EQUIPMENT OR WIRING, FIELD VERIFY THAT THE EQUIPMENT OR WIRING IS INACTIVE OR NO LONGER IN USE.
- 5 REMOVE ALL DEVICES, RACEWAYS AND WIRING FROM WALLS TO BE REMOVED. WHERE ACTIVE RACEWAYS OCCUR IN WALLS TO BE REMOVED, REROUTE THE RACEWAY WITH ASSOCIATED WIRING TO KEEP THE CIRCUIT OPERATIONAL.
- 6 REMOVE ALL FIRE ALARM DEVICES WHERE EXISTING WALLS AND CEILINGS ARE BEING REMOVED, WITH ASSOCIATED CONDUIT AND WIRING. EXISTING FIRE ALARM DEVICES AND SYSTEM NOT INDICATED FOR REMOVAL SHALL REMAIN ACTIVE THROUGHOUT DEMOLITION AND CONSTRUCTION UNTIL THE NEW SYSTEM IS TESTED AND OPERATIONAL. MAINTAIN ALL CLASS A FIRE ALARM INITIATING AND INDICATING LOOPS WHERE EXISTING DEVICES ARE REMOVED.

- 7 REMOVE ALL ABANDONED RACEWAY, CONDUIT, WIRING AND CABLING WHETHER ABANDONED PREVIOUS TO THIS PROJECT OR AS A RESULT OF THIS PROJECT. NOT ALL ABANDONED ITEMS ARE SHOWN ON THESE PLANS AND FIELD VERIFICATION OF DEMOLITION SCOPE EXTENT IS REQUIRED.
- 8 DEVICES MARKED "RR" ARE TO BE REMOVED AND RELOCATED PER NEW PLANS. EXTEND CIRCUITING AS REQUIRED FOR RELOCATION.
- 9 REFER TO ARCHITECTURAL DRAWINGS FOR REMOVAL OF MOTORS, CONDUIT, CONDUCTOR AND CONTROL WIRING ASSOCIATED WITH EXISTING MOTORIZED DOORS, PARTITIONS AND LIGHTING.
- 10 DEMOLISH ALL WIFI ACCESS POINTS WHETHER SHOWN ON DRAWINGS OR NOT WITHIN SCOPE OF WORK AREA.
- 11 REMOVE FEEDERS FOR ALL DEMOLISHED PANELS, DISCONNECTS, ETC. BACK TO SOURCE.
- 12 ALL ITEMS INDICATED TO REMAIN SHALL BE PROTECTED DURING ALL PHASES OF CONSTRUCTION.
- 13 CONTRACTOR TO TRACE AND LABEL ALL EXISTING LOADS TO REMAIN, THAT ARE CURRENTLY FED FROM PANELS THAT ARE BEING DEMOLISHED IN THIS PHASE. THESE LOADS TO BE RE-FED FROM NEW PANELS IN NEXT PHASE.
- 14 ALL HVAC UNITS TO BE REMOVED BY MECHANICAL CONTRACTOR UNLESS NOTED OTHERWISE. REMOVE ALL ASSOCIATED RACEWAYS AND CONDUCTORS BACK TO SOURCE.



**A1 DEMOLITION POWER PLAN - LEVEL 02**  
SCALE: 1/8" = 1'-0"



REV	DATE	DESCRIPTION

VCBO NUMBER: 20320  
CLIENT NUMBER:  
DATE: OCT. 30 2020

**MCKAY-DEE AMBULATORY SURGERY CENTER EXPANSION**  
INTERMOUNTAIN HEALTHCARE  
3895 MEDICAL DRIVE, OGDEN, UTAH 84403  
CONSTRUCTION DOCUMENTS

C:\Users\baal\Documents\200446 ELEC CENTRAL\_baal\F07.rvt

**SHEET KEYNOTES**

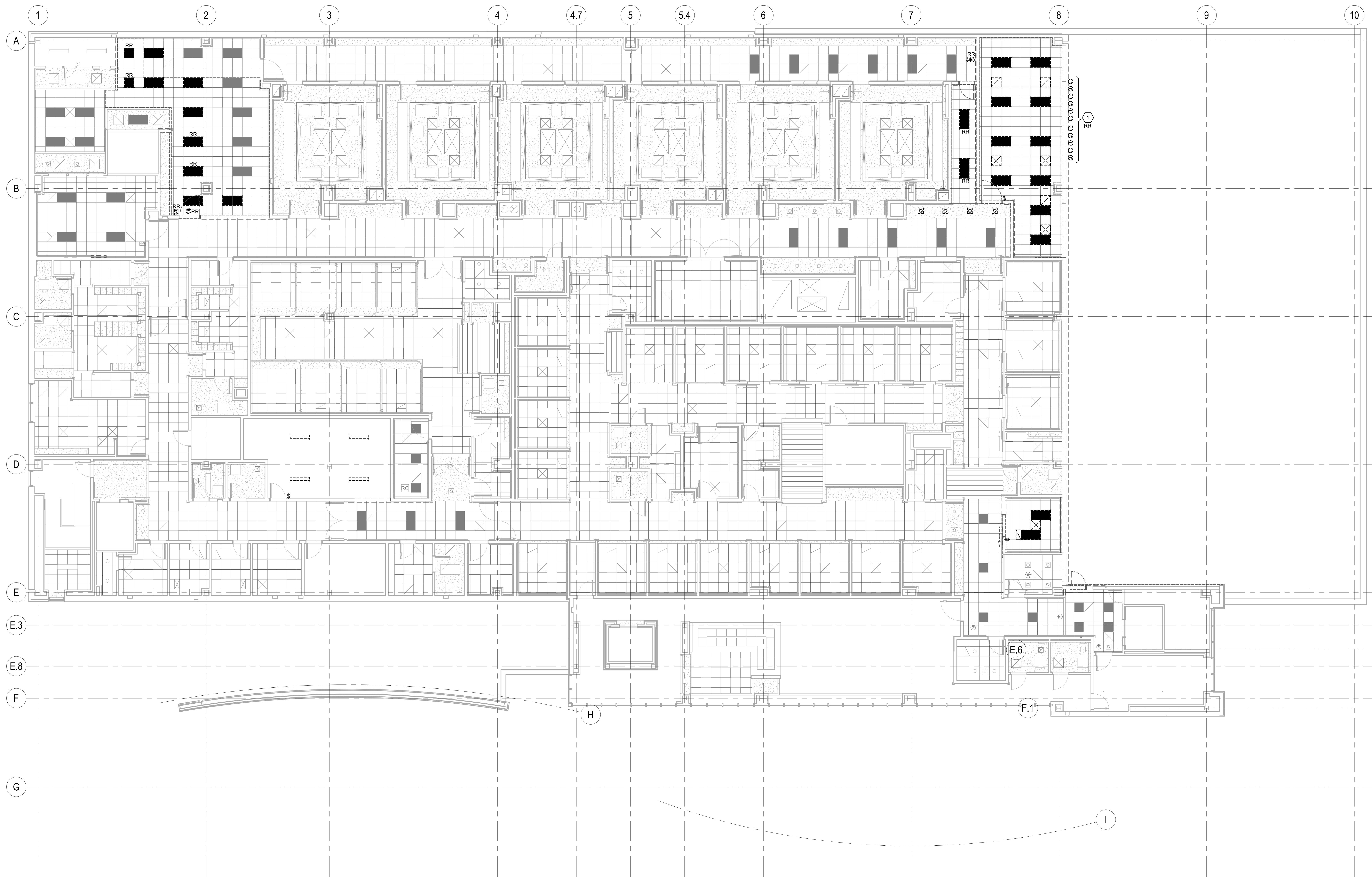
- 1 RELOCATE POWER FOR EXTERIOR SIGN. EXTEND CIRCUITING TO NEW LOCATION.

**GENERAL SHEET NOTES**

- 1 UNLESS NOTED OTHERWISE REMOVE ALL LIGHTING FIXTURES DEVICES AND EQUIPMENT SHOWN DASHED. REMOVE CONDUIT AND WIRING BACK TO PANELBOARD OF ORIGIN OR TO FIRST ACTIVE DEVICE THAT REMAINS.
- 2 SALVAGE ALL LIGHT FIXTURES, TWIST-LOCK RECEPTACLES AND WALL PLATES, CEILING SPEAKERS AND SECURITY AND FIRE ALARM DEVICES TO OWNER. PROTECT SALVAGED EQUIPMENT FROM DAMAGE.
- 3 PRIOR TO SUBMITTING BID, VISIT THE SITE AND FIELD VERIFY THE EXTENT OF ELECTRICAL DEMOLITION WORK TO MEET THE INTENT OF THE BID DOCUMENTS AND INCLUDE ALL COSTS IN BID.
- 4 PRIOR TO REMOVAL OF ANY ELECTRICAL EQUIPMENT OR WIRING, FIELD VERIFY THAT THE EQUIPMENT OR WIRING IS INACTIVE OR NO LONGER IN USE.
- 5 REMOVE ALL DEVICES, RACEWAYS AND WIRING FROM WALLS TO BE REMOVED. WHERE ACTIVE RACEWAYS OCCUR IN WALLS TO BE REMOVED, REROUT THE RACEWAY WITH ASSOCIATED WIRING TO KEEP THE CIRCUIT OPERATIONAL.
- 6 REMOVE ALL FIRE ALARM DEVICES WHERE EXISTING WALLS AND CEILINGS ARE BEING REMOVED, WITH ASSOCIATED CONDUIT AND WIRING. EXISTING FIRE ALARM DEVICES AND SYSTEM NOT INDICATED FOR REMOVAL SHALL REMAIN ACTIVE THROUGHOUT DEMOLITION AND CONSTRUCTION UNTIL THE NEW SYSTEM IS TESTED AND OPERATIONAL. MAINTAIN ALL CLASS A FIRE ALARM INITIATING AND INDICATING LOOPS WHERE EXISTING DEVICES ARE REMOVED.

**GENERAL SHEET NOTES**

- 7 REMOVE ALL ABANDONED RACEWAY, CONDUIT, WIRING AND CABLING WHETHER ABANDONED PREVIOUS TO THIS PROJECT OR AS A RESULT OF THIS PROJECT. NOT ALL ABANDONED ITEMS ARE SHOWN ON THESE PLANS AND FIELD VERIFICATION OF DEMOLITION SCOPE EXTENT IS REQUIRED.
- 8 DEVICES MARKED "RR" ARE TO BE REMOVED AND RELOCATED PER NEW PLANS. EXTEND CIRCUITING AS REQUIRED FOR RELOCATION.
- 9 REFER TO ARCHITECTURAL DRAWINGS FOR REMOVAL OF MOTORS, CONDUIT, CONDUCTOR AND CONTROL WIRING ASSOCIATED WITH EXISTING MOTORIZED DOORS, PARTITIONS AND LIGHTING.
- 10 DEMOLISH ALL WIFI ACCESS POINTS WHETHER SHOWN ON DRAWINGS OR NOT WITHIN SCOPE OF WORK AREA.
- 11 REMOVE FEEDERS FOR ALL DEMOLISHED PANELS, DISCONNECTS, ETC. BACK TO SOURCE.
- 12 ALL ITEMS INDICATED TO REMAIN SHALL BE PROTECTED DURING ALL PHASES OF CONSTRUCTION.
- 13 CONTRACTOR TO TRACE AND LABEL ALL EXISTING LOADS TO REMAIN THAT ARE CURRENTLY FED FROM PANELS THAT ARE BEING DEMOLISHED IN THIS PHASE. THESE LOADS TO BE RE-FED FROM NEW PANELS IN NEXT PHASE.
- 14 ALL HVAC UNITS TO BE REMOVED BY MECHANICAL CONTRACTOR UNLESS NOTED OTHERWISE. REMOVE ALL ASSOCIATED RACEWAYS AND CONDUCTORS BACK TO SOURCE.



**A1** DEMOLITION LIGHTING PLAN - LEVEL 02  
SCALE: 1/8" = 1'-0"



**SPECTRUM ENGINEERS**  
324 S. State St., Suite 400  
Salt Lake City, UT 84111  
801-578-7077  
801-328-5151  
fax: 801-328-5155  
www.spectrum-engineers.com

**MCKAY-DEE AMBULATORY SURGERY CENTER EXPANSION**  
INTERMOUNTAIN HEALTHCARE  
3895 MEDICAL DRIVE, OGDEN, UTAH 84403  
CONSTRUCTION DOCUMENTS

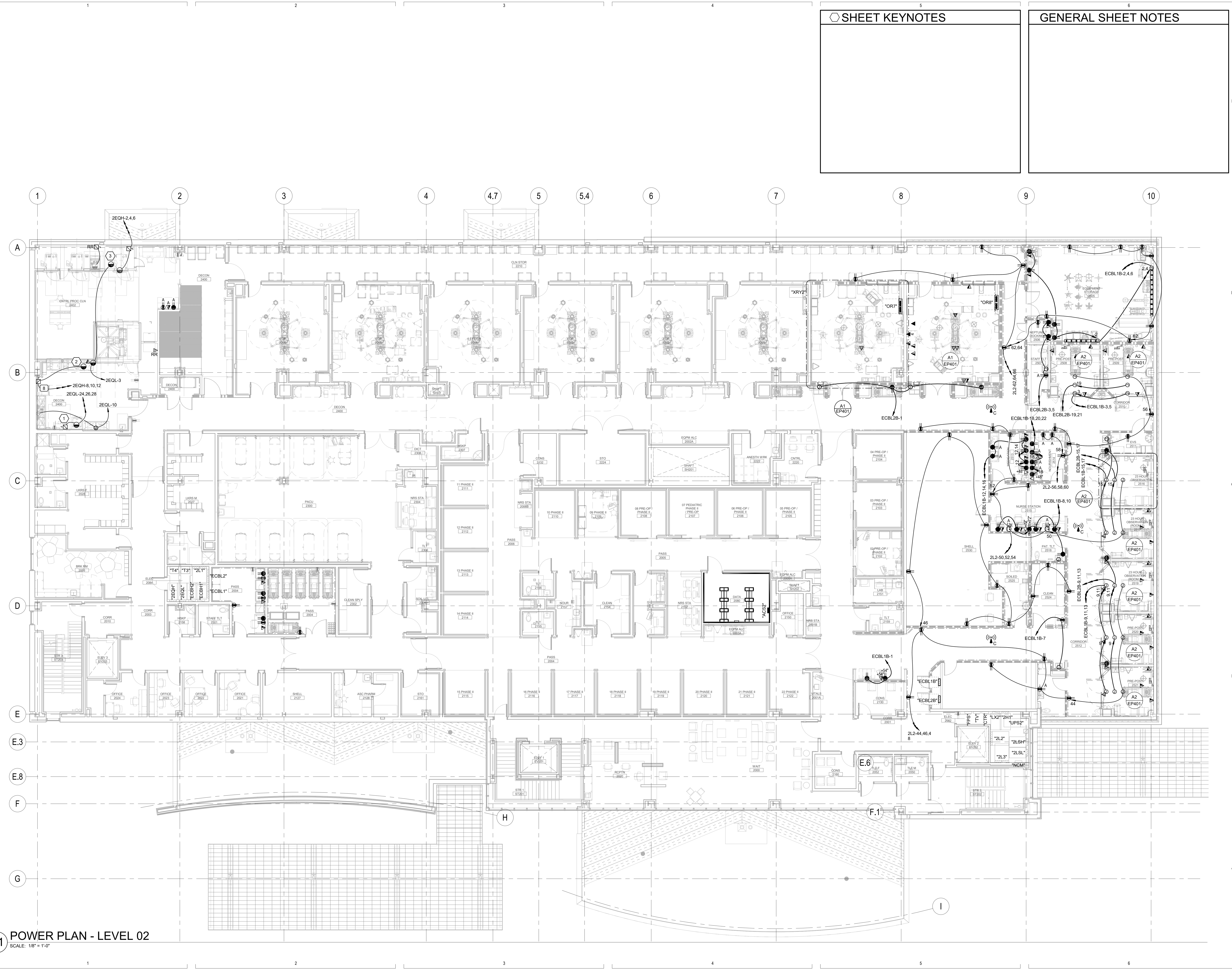
C:\Users\baal\Documents\200446 ELEC CENTRAL\_baal\F07.rvt

SHEET KEYNOTES

GENERAL SHEET NOTES

Table with columns: REV, DATE, DESCRIPTION

VCBO NUMBER: 20320 CLIENT NUMBER: DATE: OCT. 30 2020



A1 POWER PLAN - LEVEL 02 SCALE: 1/8" = 1'-0"

C:\Users\baal\Documents\200446 ELEC CENTRAL\_baal\F07.rvt