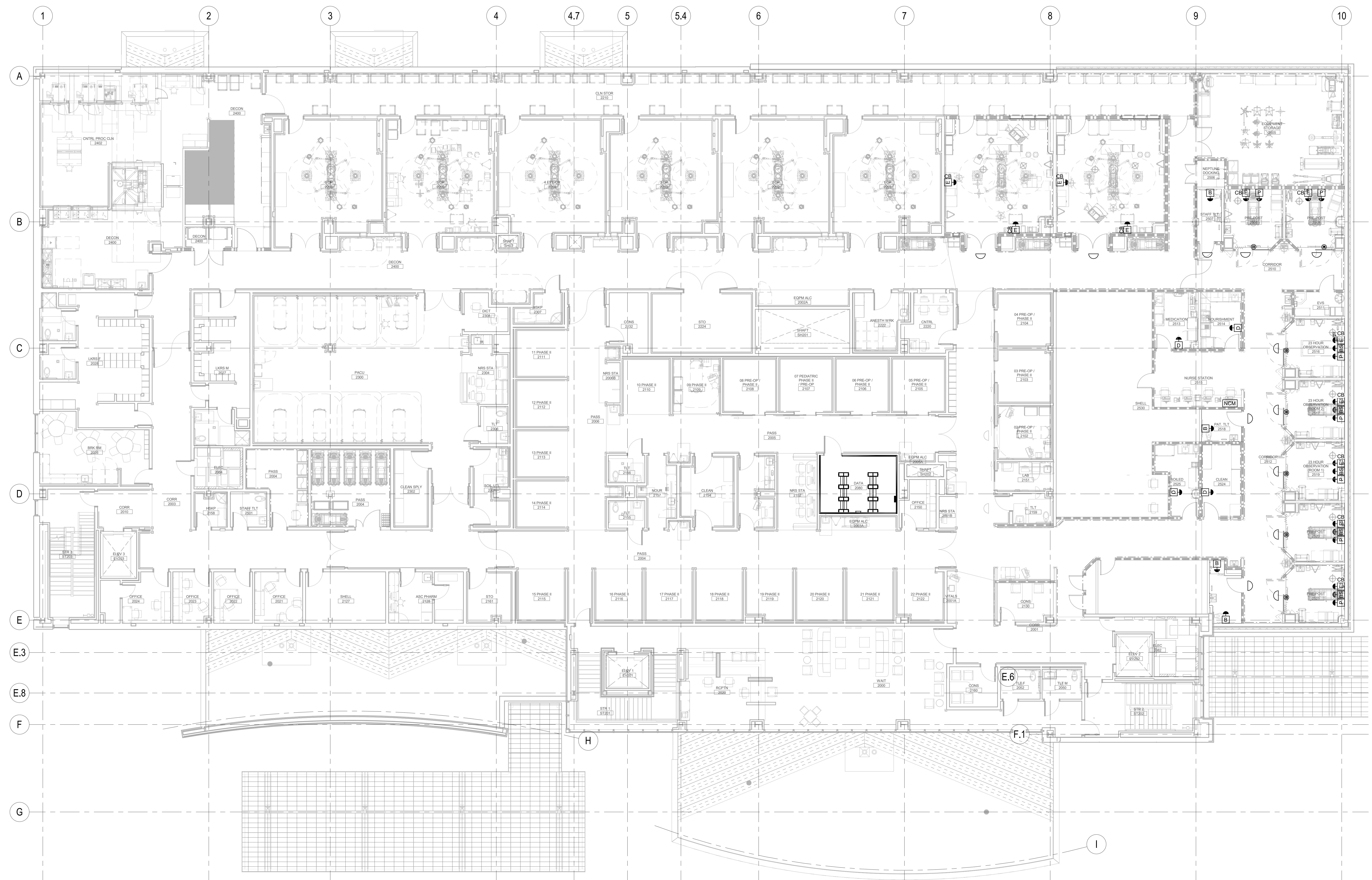


REV	DATE	DESCRIPTION

VCBO NUMBER: 20320
CLIENT NUMBER:
DATE: OCT. 30 2020

SHEET KEYNOTES

GENERAL SHEET NOTES



A1 SYSTEMS PLAN - LEVEL 02
SCALE: 1/8" = 1'-0"

C:\Users\baal\Documents\20046 ELEC CENTRAL_baal\F07.rvt

NURSE CALL SYSTEM NOTES

- NURSE CALL WORK. PROVIDE THE NECESSARY NUMBER OF CONTROL UNITS (ACU) FOR THE NUMBER OF MASTER STATIONS AND DEVICES SHOWN ON DRAWINGS +20%. PROVIDE DEVICES AS INDICATED ON FLOOR PLANS AND PROVIDE CABLES AS REQUIRED PER MANUFACTURER'S WRITTEN INSTRUCTIONS. REFER TO RISER, SCHEDULE, AND 275223 FOR ADDITIONAL REQUIREMENTS.
- MAXIMUM OF 8 CORRIDOR DOME LIGHTS PER ZONE OF COMMON POWER.
- COMPLETE AREA CONTROL UNIT ROOM-NUMBER PROGRAMMING WORK SHEET AND COORDINATE WITH HEAD OF STAFF IN EACH AREA BEFORE PROGRAMMING AREA CONTROL UNIT.
- PROVIDE ONLY MANUFACTURER RECOMMENDED MULTI-CONDUCTOR CABLES IN CONDUCTOR COUNTS INDICATED.
- INSULATE ALL UNUSED CONDUCTOR ENDS TO PREVENT SHORTING.
- USE BUTT-SPLICES OR INSULATED CRIMP CAP TERMINALS FOR ALL CONNECTIONS. DO NOT USE WIRE NUTS.
- UTILIZE CABLE TRAY AS SHOWN ON POWER PLAN. PROVIDE PLENUM RATED CABLES.
- PROVIDE PILLOW SPEAKER WITH TV AND LIGHTING CONTROL FOR EVERY BED STATION.
- PROVIDE .75" CONDUIT WIRING TO EACH DEVICE OR TO ACCESSIBLE CEILING.
- ISOLATE ANNUNCIATION WIRES TO EMERGENCY STATIONS BY TWO DIFFERENT AREA CONTROL UNITS WITH DIODES.
- SUBSCRIPTS ON DOME LAMPS SHOWN IN FLOOR PLANS INDICATE WHICH NURSE CALL MASTER THE ROOM DEVICES ARE ASSIGNED TO.
- TWO SEPARATE NURSE CALL SYSTEMS SHALL BE INSTALLED - ONE FOR THE MAIN MEDICAL CENTER AND ONE FOR THE SECOND LEVEL SURGICAL AREA.

NURSE CALL DEVICE SCHEDULE

SYMBOL	DESCRIPTION	MOUNTING HEIGHT	BOXES	INSTRUCTIONS
NCM	NURSE CALL MASTER	DESK TOP, RECEPTACLE AT 18"*	4 SQ. W/ 1-GANG RING	PROVIDE .75" C TO ACC. CEILING.
ACU	AREA CONTROL UNIT	-	EQUIPMENT CABINET	WALL MOUNT
D	DUTY STATION	54"	3-GANG DEEP	PROVIDE .75" C TO ACC. CEILING.
CB	CODE BLUE BUTTON	54"	4 SQ. W/ 1-GANG RING	PROVIDE .75" C TO ACC. CEILING.
B	BATH STATION	36"	4 SQ. W/ 1-GANG RING	PROVIDE .75" C TO ACC. CEILING.
E CB	COMBINATION EMERGENCY STAFF ASSIST/CODE BLUE	54"	4 SQ. W/ 1-GANG RING	PROVIDE .75" C TO ACC. CEILING.
P	PATIENT STATION AND PILLOW SPEAKER	54"	4 SQ. W/ 1-GANG RING	PROVIDE .75" C TO ACC. CEILING.
☺	CORRIDOR DOME LAMP	6" ABOVE DOOR (CEILING)	4 SQ. W/ 2-GANG RING	PROVIDE 1" C TO CORRIDOR ACC. CEILING AND 1" C TO ROOM ACC. CEILING.

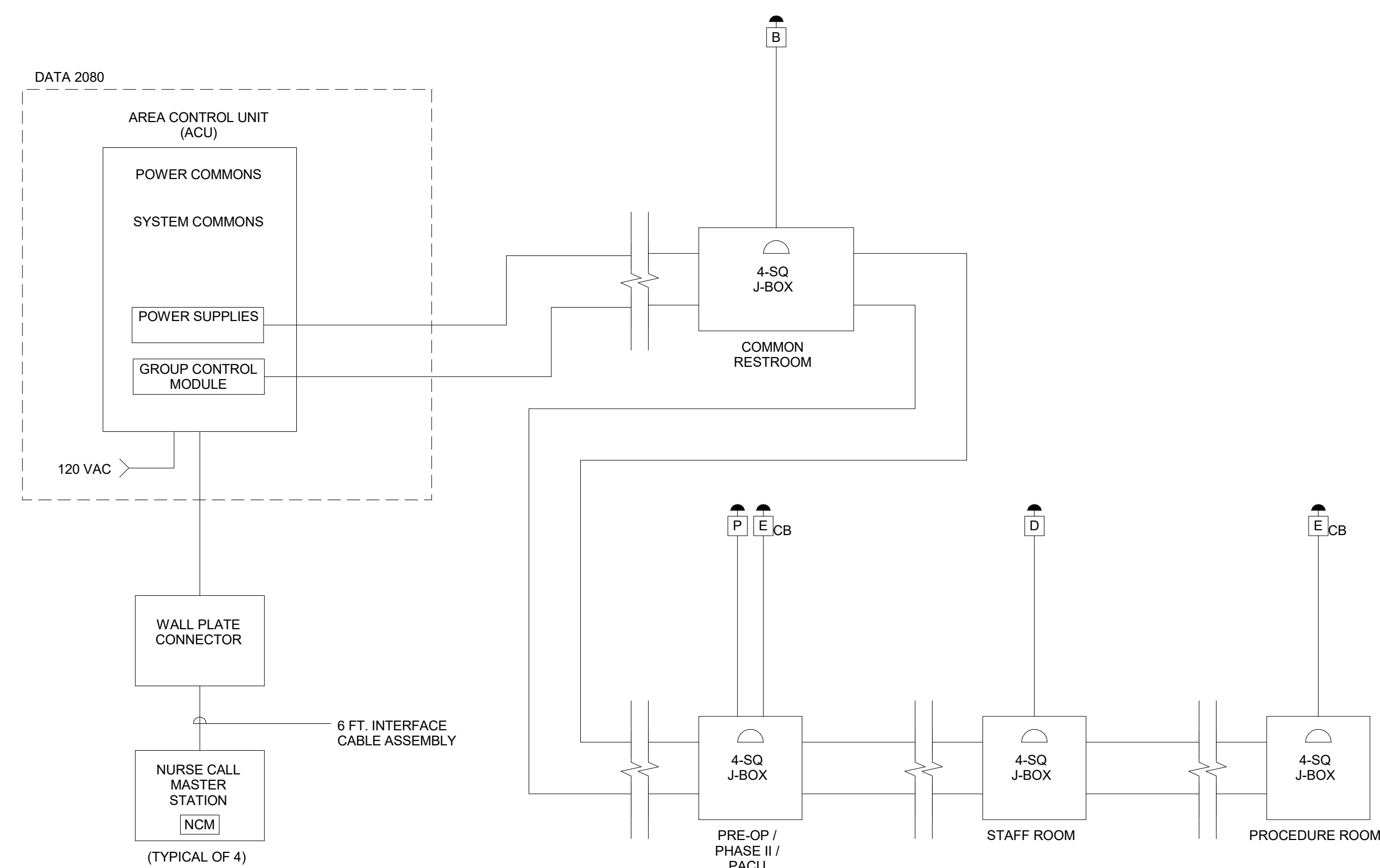
* COORDINATE LOCATION WITH FURNITURE.

REV DATE DESCRIPTION

VCBO NUMBER: 20320
CLIENT NUMBER:
DATE: OCT. 30 2020

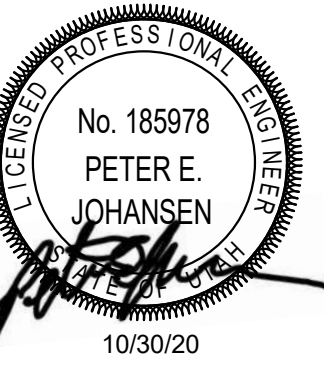
MCKAY-DEE AMBULATORY SURGERY CENTER EXPANSION
INTERMOUNTAIN HEALTHCARE
3895 MEDICAL DRIVE, OGDEN, UTAH 84403
CONSTRUCTION DOCUMENTS

SYSTEMS DIAGRAMS



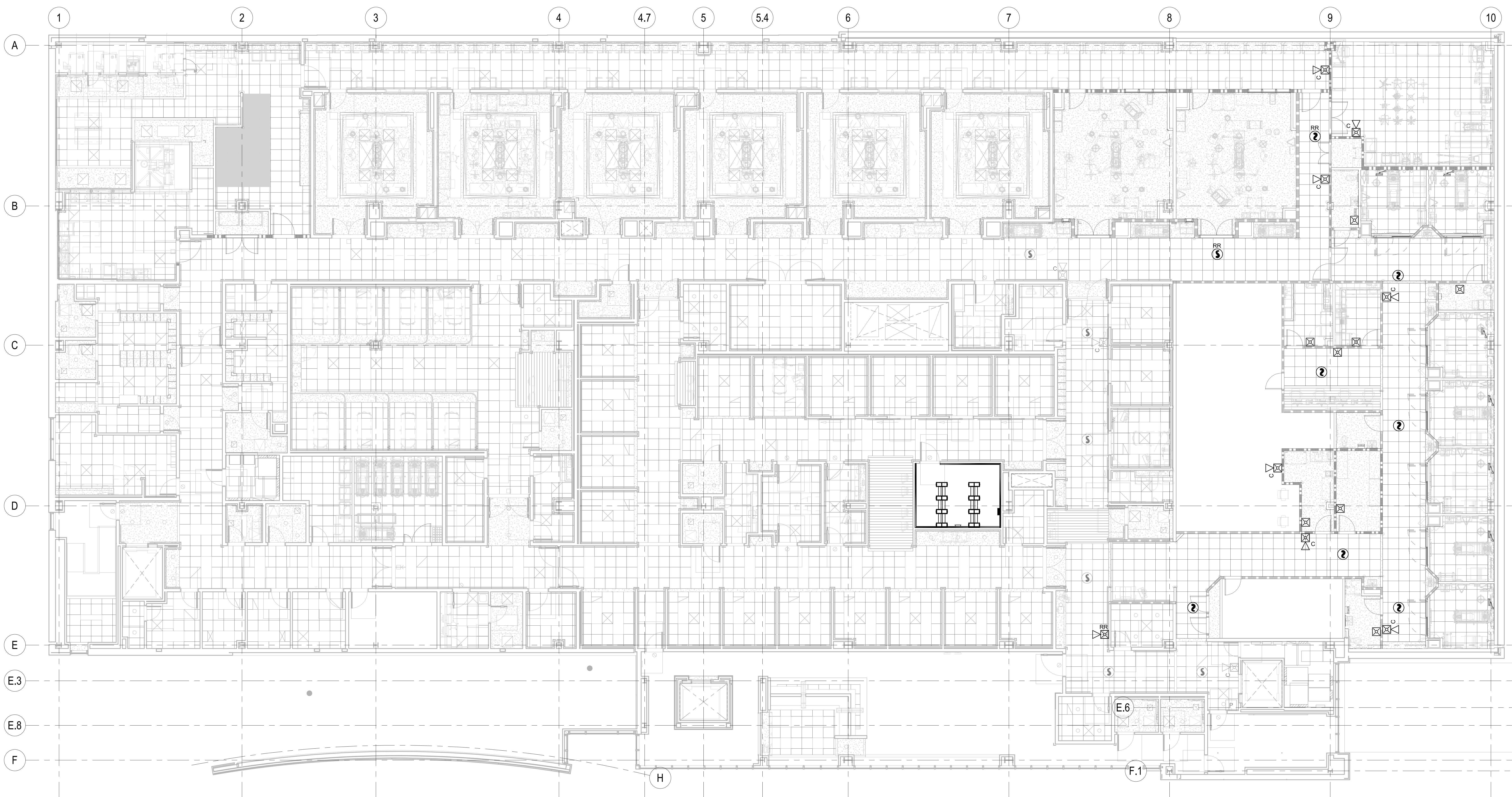
FOR SECOND LEVEL SURGICAL (RAULAND 5)

SHEET KEYNOTES	GENERAL SHEET NOTES



REV	DATE	DESCRIPTION

VCBO NUMBER: 20320
CLIENT NUMBER:
DATE: OCT. 30 2020



A1 LEVEL 2 FIRE ALARM PLAN
SCALE: 1/8" = 1'-0"

C:\Users\baal\Documents\200446 ELEC CENTRAL_baal\F07.rvt

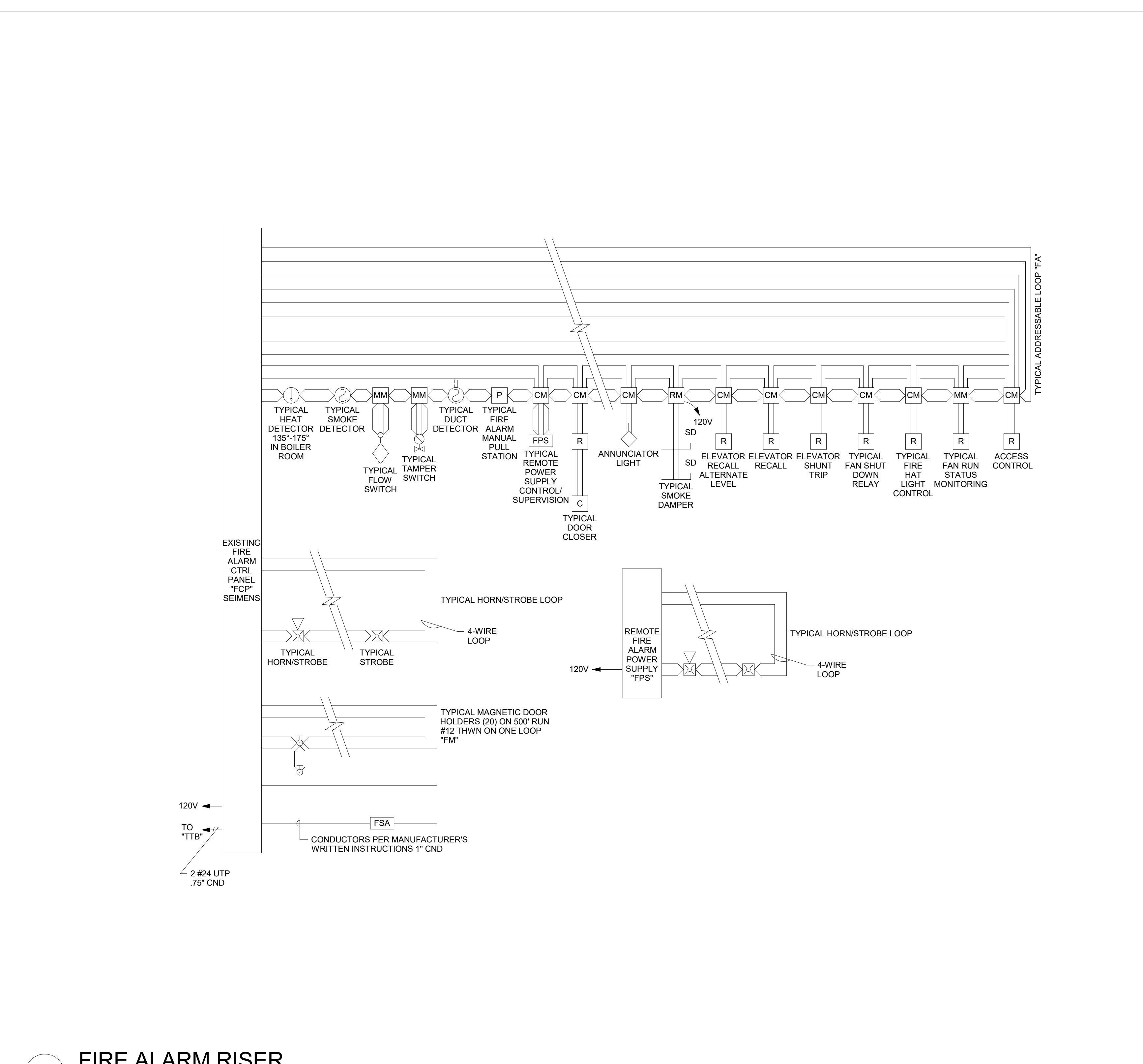
GENERAL SHEET NOTES

- PLANS ARE BASED UPON 125 DETECTORS AND 125 MODULES DEVICES PER ADDRESSABLE LOOP. OTHER CONFIGURATIONS ARE ACCEPTABLE SUBJECT TO CONTRACTOR ALLOWING FOR INCREASED WIRING REQUIREMENTS AND SUBMITTAL DRAWINGS SHOWING NEW WIRING CONFIGURATION. INITIAL DEVICES PER LOOP SHALL NOT EXCEED 75% MAXIMUM ALLOWABLE.
- PLANS ARE BASED UPON THE WIRING SCHEDULE SHOWN, WHERE MANUFACTURER'S REQUIREMENTS EXCEED REQUIREMENTS SHOWN, INCLUDE ADDITIONAL ASSOCIATED COSTS AND SUBMITTAL DRAWINGS INDICATING NEW WIRING CONFIGURATION.
- PLANS ARE BASED UPON 3 AMPS AT 24 VDC, NOT TO EXCEED 75% (2.25 AMPS AVAILABLE), POWER SUPPLY CAPACITY PER NOTIFICATION CIRCUIT OR 6 AMPS PER POWER SUPPLY NOTIFICATION DEVICE LOADS ARE BASED UPON NOTIFICATION DEVICE SCHEDULE SHOWN. INCLUDE ADDITIONAL ASSOCIATED COSTS FOR INCREASED WIRING AND POWER SUPPLY CAPACITY IF LOADS OF ACTUAL DEVICES PROVIDED EXCEED CIRCUIT CAPACITY OR IF LOAD OUTPUT OF ACTUAL POWER SUPPLIES PROVIDED IS SIZED DIFFERENTLY. PROVIDE SUBMITTAL DRAWINGS SHOWING NEW WIRING CONFIGURATION.
- FLOW AND TAMPER CONFIGURATION BASED UPON FIRE SPRINKLER DESIGN CONCEPT. FIELD VERIFY ACTUAL REQUIREMENTS. INCLUDE ANY ADDITIONAL MONITOR MODULES REQUIRED BY ACTUAL DESIGN REQUIREMENTS.
- HEAT DETECTORS WHEN INSTALLED IN ELEVATOR SHAFTS OR MECHANICAL ROOMS FOR ELEVATOR SHUT DOWN SHALL HAVE HEAT DETECTOR WITH LOWER RESPONSE TIME INDEX THAN SPRINKLER HEAD.
- PROVIDE POWER SUPPLY CAPACITY AS REQUIRED FOR DOOR HOLD OPENS SHOWN.
- BATTERY CAPACITY TO BE ADEQUATE TO OPERATE 15 MINUTES AFTER 24 HOURS PLUS 25% SPARE CAPACITY.
- PROVIDE MONITOR MODULES AT CONTROLLERS FOR ALL SUPPLY, RELIEF, AND EXHAUST FANS TO MONITOR RUN STATUS. WHEN ANY OF THE ABOVE ARE NOT RUNNING, AS INDICATED BY THE RUN STATUS CONTACTS, THE ASSOCIATED FIRE/SMOKE DAMPERS SHALL BE CLOSED.
- PROVIDE DUCT DETECTORS FOR SUPPLY AND RETURN AIR SYSTEMS OVER 2000 CFM. INSTALL DUCT DETECTORS PER NFPA 72 REQUIREMENTS AND PROVIDE ADDITIONAL DUCT DETECTORS DEPENDING UPON FINAL DUCT ARRANGEMENT.
- PROVIDE DUCT DETECTOR AT EACH FLOOR, PRIOR TO CONNECTION TO A COMMON RETURN AND PRIOR TO RECIRCULATING OR FRESH AIR INLET IN AIR RETURN SYSTEMS OVER 15,000 CFM CAPACITY AND SERVING MORE THAN ONE STORY.
- PROVIDE MANUAL PULL STATIONS IN BOILER ROOMS AND KITCHENS.
- PROVIDE ONE YEAR OFF SITE MONITORING INCLUDING ALL INTERFACE DEVICES AND MONITORING CHARGES. COORDINATE WITH BUILDING OWNER'S OFF SITE MONITORING COMPANY.
- LOCATE SMOKE DETECTORS MINIMUM 3' FROM AIR SUPPLY AND RETURN LOUVERS.
- PROVIDE SYNCHRONIZED STROBES THROUGHOUT FACILITY. PROVIDE SYNCHRONIZATION MODULES PER MANUFACTURER'S REQUIREMENTS. INCLUDE ADDITIONAL WIRING, IF REQUIRED.
- FOR THE PURPOSES OF ALARM ANNUNCIATION EACH FLOOR SHALL BE CONSIDERED AS A SEPARATE ZONE. INDICATING DEVICES SHALL ANNUNCIATE ONLY ON THE FLOOR OR FLOORS WITH AN INITIATING DEVICE THAT IS IN ALARM.
- ALL INDICATING LOOPS SHALL BE 4-WIRE.

INITIATING DEVICES	ZONE	OUTPUT DEVICES																		NOTES		
		ALARM ANNUNCIATION PER DEVICE	SUPERVISORY ANNUNCIATION PER DEVICE	ELEVATOR RECALL - MAIN LEVEL	ELEVATOR RECALL - ALTERNATE LEVEL	ELEVATOR FIRE HAT LIGHT CONTROL	ELEVATOR SHUNT TRIP	FAN SHUT DOWN	SMOKE DAMPER CLOSURE	STROBES (ZONE OF ALARM)	HORN/SCHIMMS (ZONE OF ALARM)	DELAYED EGRESS DOOR UNLOCKING	HELD-OPEN DOOR RELEASE (BY FLOOR)	ELEVATOR SMOKE GUARD	RELEASES MAINTENANCE TESTING REPORT	CLOSE ASSOCIATED FIRE SMOKE DAMPERS						
1	MAIN FIRE SPRINKLER FLOW ALARM																					
2	MAIN FIRE SPRINKLER TAMPER																					
3	FLOOR SPRINKLER FLOW ALARM																					
4	FLOOR SPRINKLER TAMPER																					
5	FLOOR INITIATING DEVICE																					
6	MAIN LEVEL ELEVATOR LOBBY DETECTOR																					
7	ELEVATOR LOBBY DETECTOR LEVEL 2																					
8	ELEVATOR LOBBY DETECTOR LEVEL 3																					
9	ELEVATOR LOBBY DETECTOR LEVEL 4																					
10	ELEVATOR LOBBY DETECTOR PENTHOUSE																					
11	ELEVATOR MACHINE ROOM SMOKE DETECTOR																					
12	ELEVATOR MACHINE ROOM HEAT DETECTOR																					
13	SUPPLY DUCT SMOKE DETECTOR																					
14	RETURN DUCT SMOKE DETECTOR																					
15	DAMPER SMOKE DETECTOR																					
16	SMOKE DETECTOR																					
17	PULL STATION																					
18	FAN SHUTDOWN																					

WIRING SCHEDULE				
FUNCTION	< 500'	< 1000'	1000'-3000'	> 3000'
ADDRESSABLE LOOP	#16 TSP	#16 TSP	#14 TSP	#12 TSP
POWER LOOP	#14 THWN	#14 THWN	#12 THWN	#10 THWN
SPARE LOOP	#14 THWN	#14 THWN	#12 THWN	#10 THWN
STROBE HORNS	#14 THWN	#14 THWN	#12 THWN	#10 THWN
MAGNETIC DOOR HOLDER SPEAKERS	#12 THWN	#10 THWN		
	#16 TSP	#16 TSP	#14 TSP	#14 TSP

NOTIFICATION SCHEDULE				
SYMBOL	STROBE SIZE	COVERAGE	AVERAGE CURRENT	MAXIMUM PER CIRCUIT ALONE
☒ 15	15 CD	20'x20'	.085A	17
☒ 30	30 CD	30'x30'	.135A	11
☒ 75	75 CD	40'x40'	.200A	7
☒ 110	110 CD	50'x50'	.225A	6



1 FIRE ALARM RISER
NTS