



PROPOSAL REQUEST 001

project	SDP Sumitomo Dainippon Pharma TI	project no	21560
date	2021-11-02	no. pages	
owner	SDP Sumitomo Dainippon Pharma Oncology		
contractor	Saunders Construction Inc.		
reference	PR 001 - SDP Sumitomo Dainippon Pharma TI		

attention	Ed Saunders Cory Grand Ryan Boogaard Alex Boswell Jon Jacobs Tyler Squire	firm(s)	Saunders Construction Inc. SDP Sumitomo Dainippon Pharma Oncology Spectrum Engineers Spectrum Engineers Spectrum Engineers Spectrum Engineers
------------------	--	----------------	--

This is a proposal request for an estimate or cost for the following item(s) of work and is not an authorization or order for changes or additional work and does not revise the contract price.

- 1.1 Sheet A700
Modifications made to door hardware doors R003, R004 & R005, See revised hardware types and notes.
 - 1.2 Sheet EP101
Provide additional outlet on north wall of Equipment Room 003.
 - 1.3 Sheet EP602
Revisions made to existing panel 1QL1. See sheet attached.
-

VCBO Architecture

Nancy McKendrick



REV	DATE	DESCRIPTION
1	08.05.21	ADD 01
3	11.02.21	PR 01

VCBO NUMBER: 21560
CLIENT NUMBER:
DATE: OCTOBER 28, 2021

DOOR & FRAME NOTES

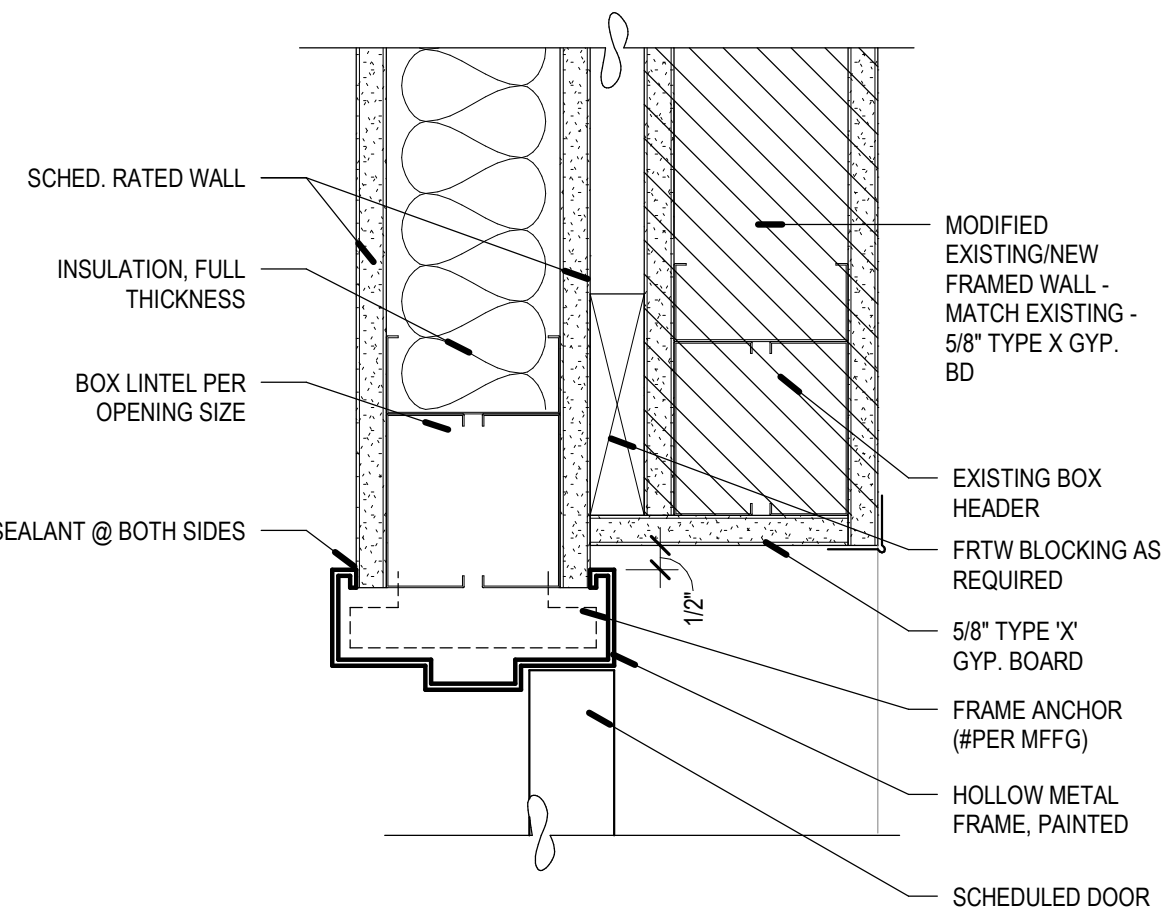
- MATERIAL ABBREVIATIONS:
WD = WOOD
AL = ALUMINUM
HM = HOLLOW METAL
- ALL HOLLOW METAL DOOR AND WINDOW FRAMES ARE TO HAVE A SINGLE RABBET PROFILE
- SEE SPECIFICATION FOR HARDWARE GROUP DEFINITION
- GENERAL CONTRACTOR TO COORDINATE WORK BETWEEN DOOR INSTALLER AND SECURITY SYSTEM INSTALLER
- PAINT HOLLOW METAL DOORS & FRAMES TO MATCH EXISTING

GLAZING TYPE LEGEND

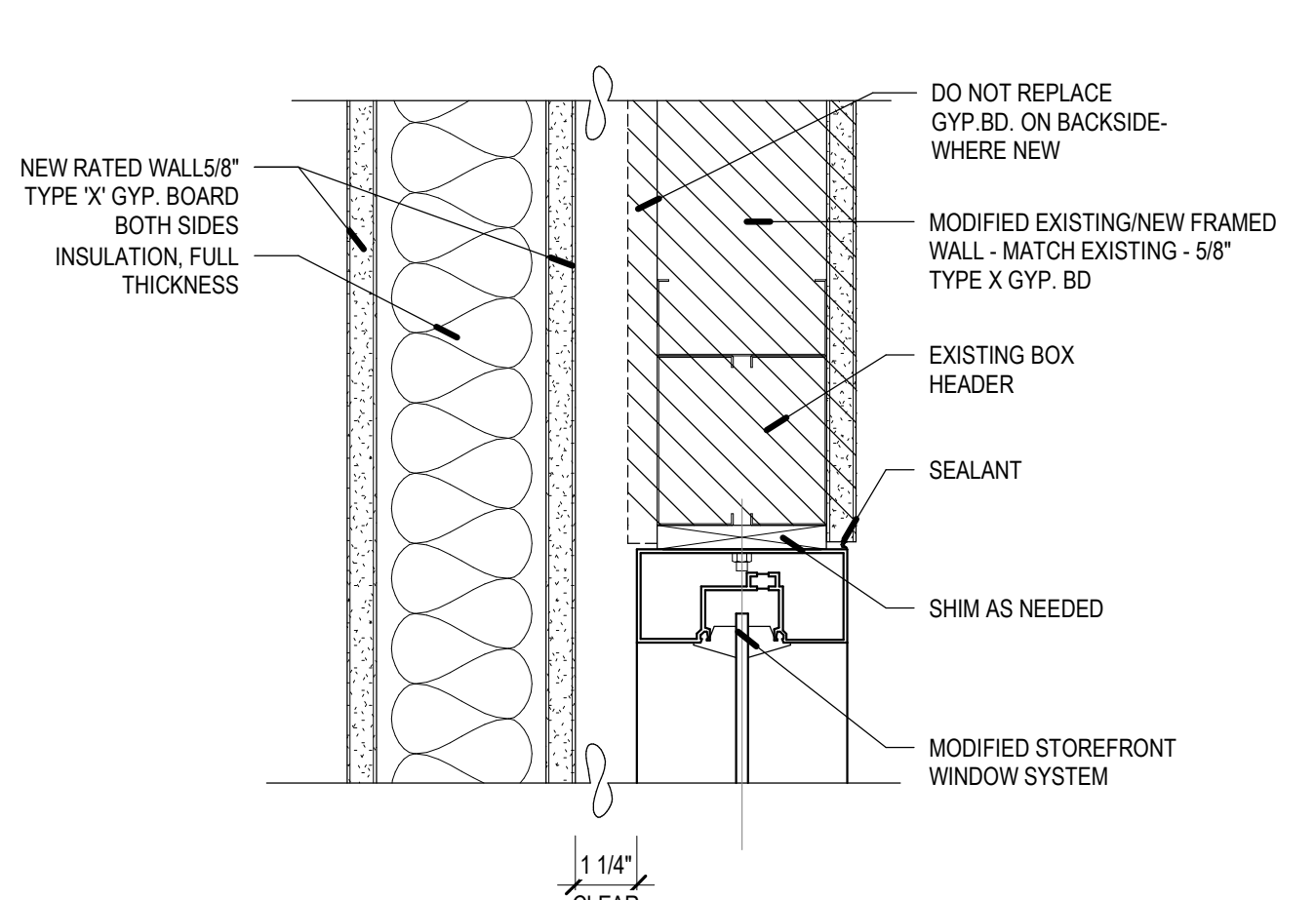
MARK	DESCRIPTION
①	1/4" THICK GLASS
#T	'T' INDICATES TEMPERED GLASS

NOTE:
WINDOW TYPE QUANTITIES PROVIDED FOR CONVENIENCE, THE CONTRACTOR IS RESPONSIBLE TO VERIFY THE QUANTITIES OF EACH WINDOW TYPE.

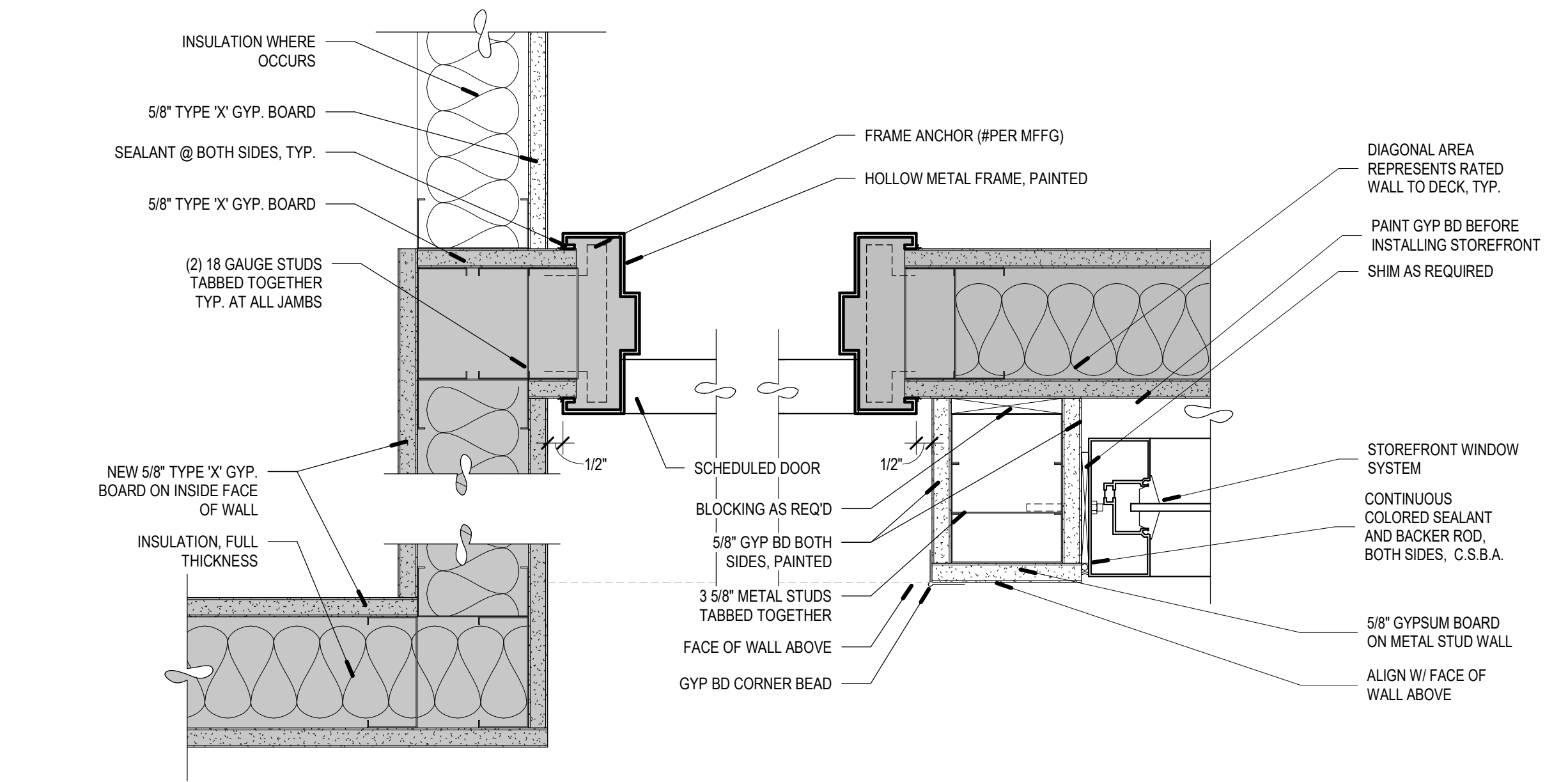
DOOR NUMBER	NEW/EXISTING	DOOR				FRAME				HARDWARE GROUP	GLAZING TYPE	LABEL (MIN.)	NOTES	DOOR NUMBER		
		SIZE			ELEV. TYPE	MATERIAL	FACING/FINISH	NEW/EXISTING	ELEV. TYPE						MATERIAL	FINISH/FACING
		WIDTH	HEIGHT	THICK												
R001	NEW	36"	96"	1 3/4"	A2	WD	STAINED	NEW	1	HM	PAINTED	200	NA	45 MIN.	R001	
R003	NEW	48"	96"	1 3/4"	E	HM	PAINTED	EXISTING	1	HM	PAINTED	202.1	NA	NOT RATED	MODIFY FRAME TO ALLOW DOOR TO LATCH, SEAL EXISTING HOLLOW METAL FRAME TO WALL	R003
R004	NEW	48"	96"	1 3/4"	E	HM	PAINTED	EXISTING	1	HM	PAINTED	202	NA	NOT RATED	MODIFY FRAME TO ALLOW DOOR TO LATCH, SEAL EXISTING HOLLOW METAL FRAME TO WALL	R004
R005	RELOCATED	36"	96"	1 3/4"	B	HM	PAINTED	EXISTING	1	HM	PAINTED	202	NA	60 MIN.	MODIFY FRAME TO ALLOW DOOR TO LATCH, SEAL EXISTING HOLLOW METAL FRAME TO WALL	R005
R022	EXISTING	36"	96"	1 3/4"	A	WD	STAINED	NEW	2A	HM	PAINTED	EXIST	1			R022



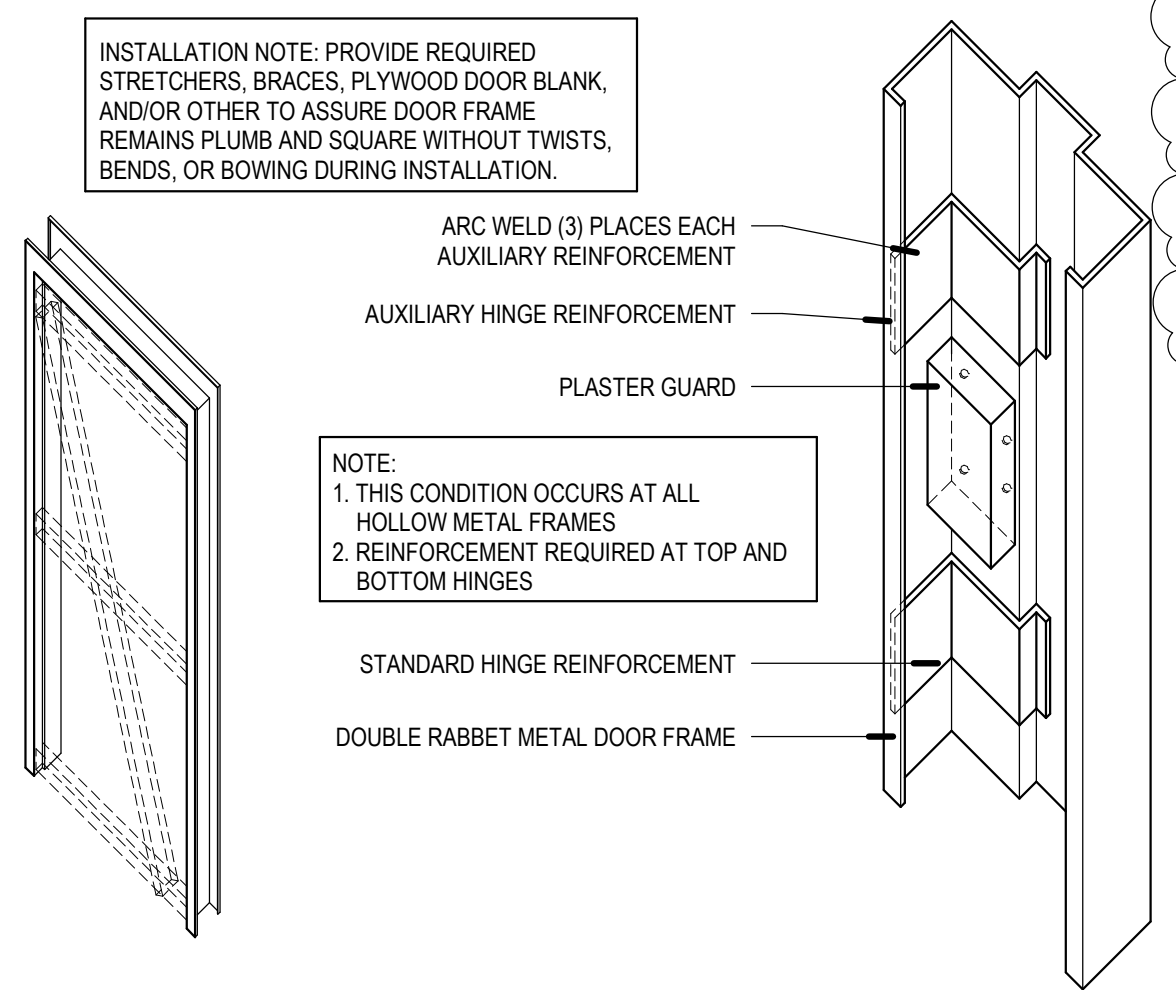
C1 H.M. DOOR HEAD DTL. @ 1 HR WALL
SCALE: 3" = 1'-0"



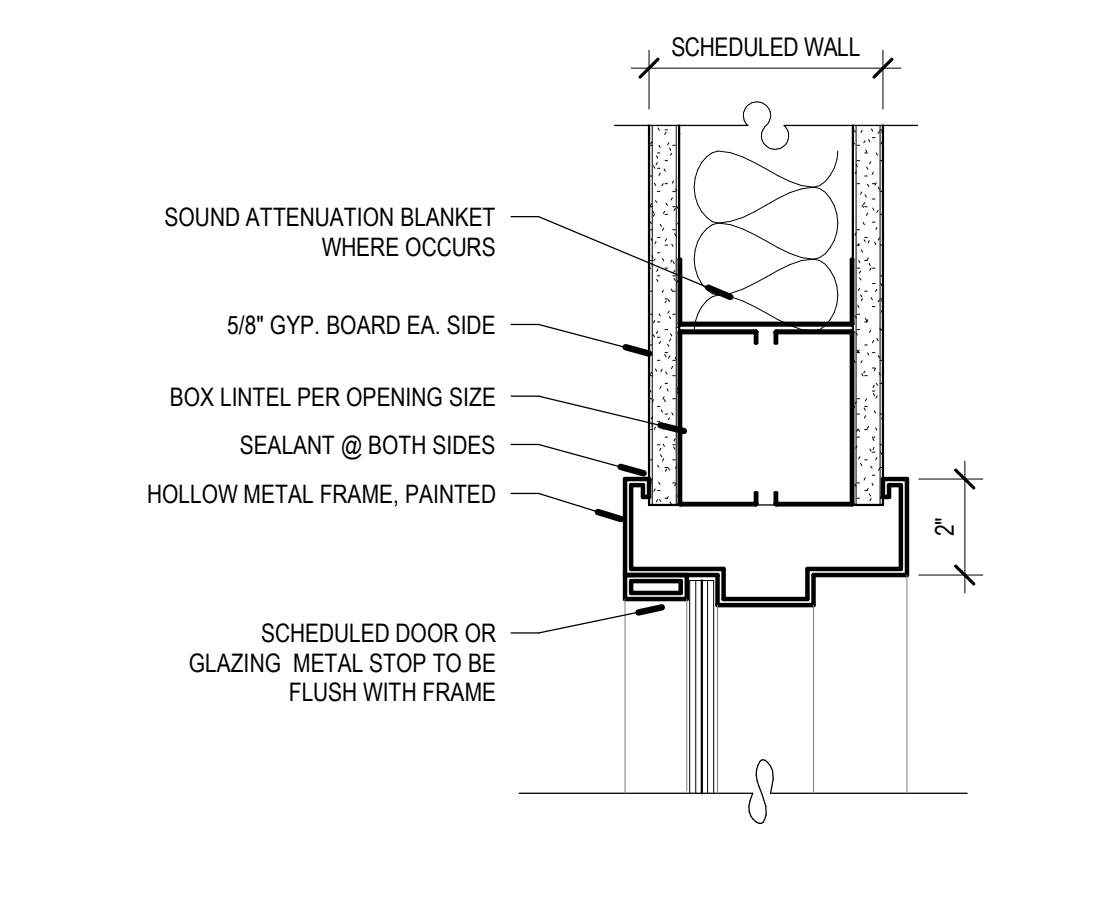
C2 STOREFRONT HEAD DTL. @ 1 HR WALL
SCALE: 3" = 1'-0"



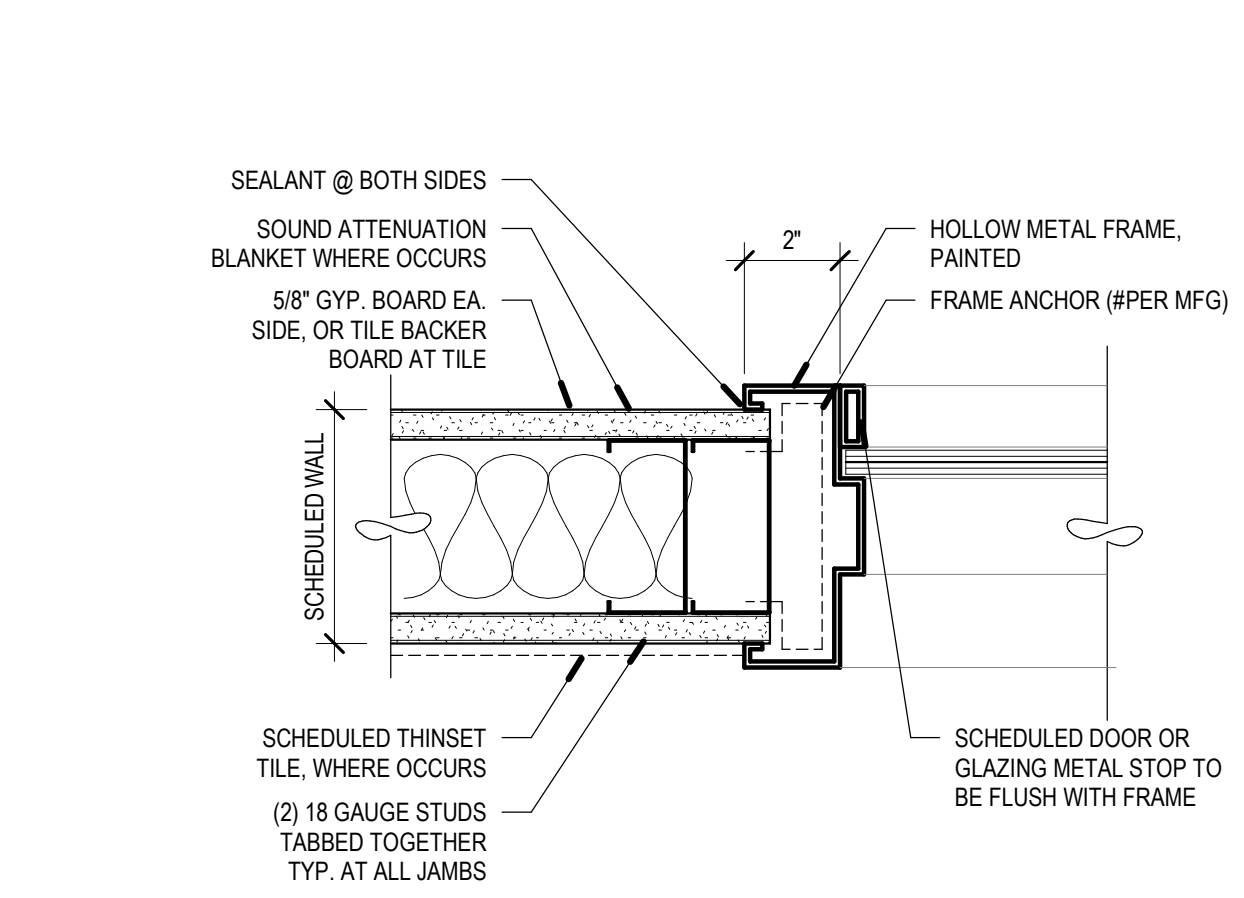
B1 H.M. DOOR JAMB DTL. @ 1 HR WALL
SCALE: 3" = 1'-0"



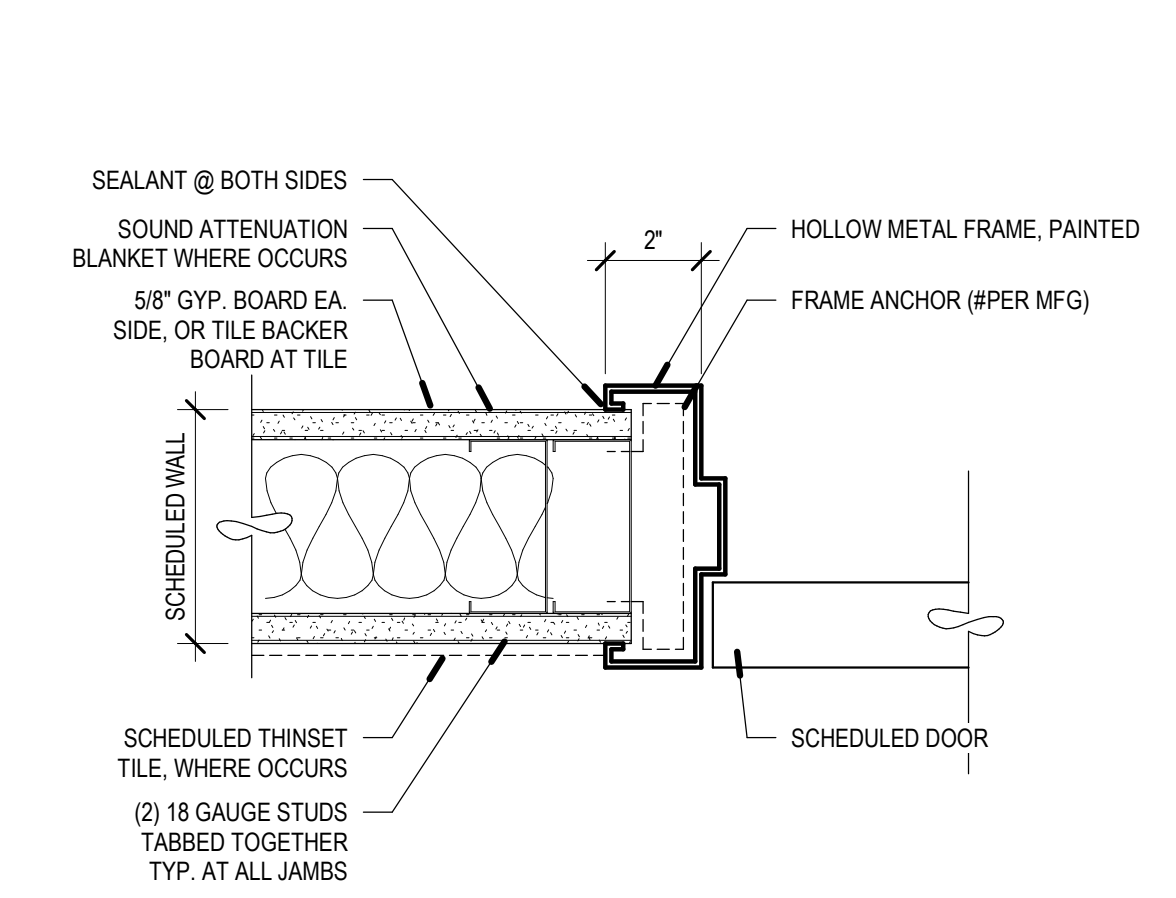
B3 TYPICAL H.M. FRAME DTL.
SCALE: NOT TO SCALE



A1 H.M. DOOR OR WINDOW HEAD DTL.
SCALE: 3" = 1'-0"



A2 H.M. WINDOW JAMB DTL.
SCALE: 3" = 1'-0"



A3 H.M. DOOR JAMB DTL.
SCALE: 3" = 1'-0"

HW Set 202
Doors R004 & R005, Lab 2 & IHC Nanostring

Existing hardware to be reused
Interior Hinge(s)
Surface Closer
Mop Plate
Kick Plate
Door Stop
Door Bottom

Existing hardware to be demolished
Push Plate
Flush Pull

NEW hardware needed

1 EA	Gasketing	429A	719	ZER
1 EA	Fire Exit Device	F-25-R-L-BE-Dane	626	FAL

HW Set 202.1
Door R003- Equipment Room

Existing hardware to be reused
Continuous Hinge
Surface Closer
Mop Plate
Kick Plate
Door Stop
Door Bottom

Existing hardware to be demolished
Push Plate
Flush Pull

NEW hardware needed

1 EA	Gasketing	429A	719	ZER
1 EA	Fire Exit Device	F-25-R-L-BE-Dane	626	FAL

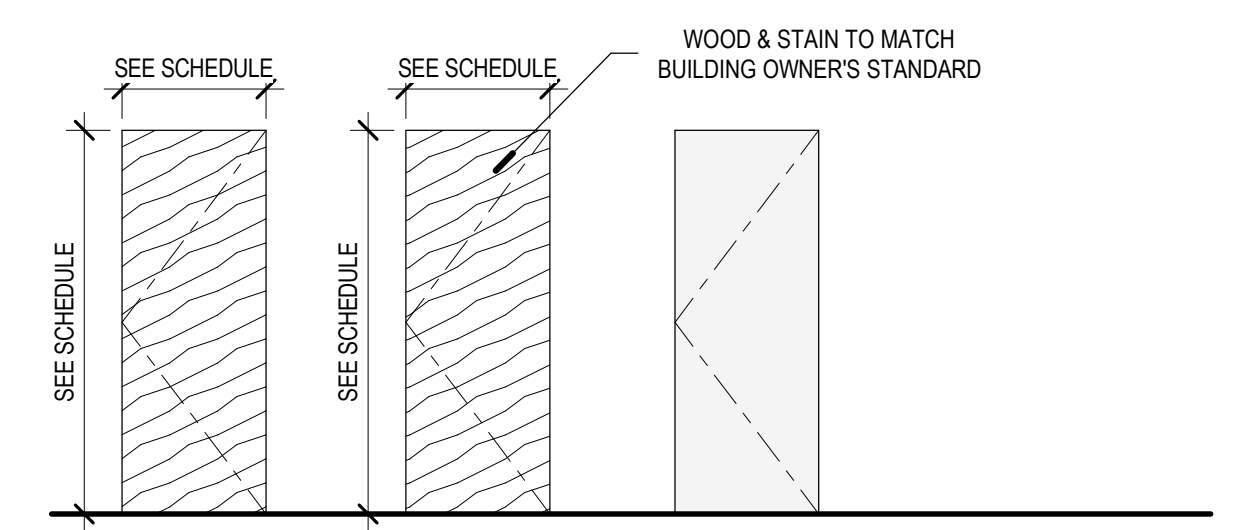
HW SET: 200
DOOR: 001

LAB SPACE; ELECTRIFIED; CARD READER ENTRANCE SGL

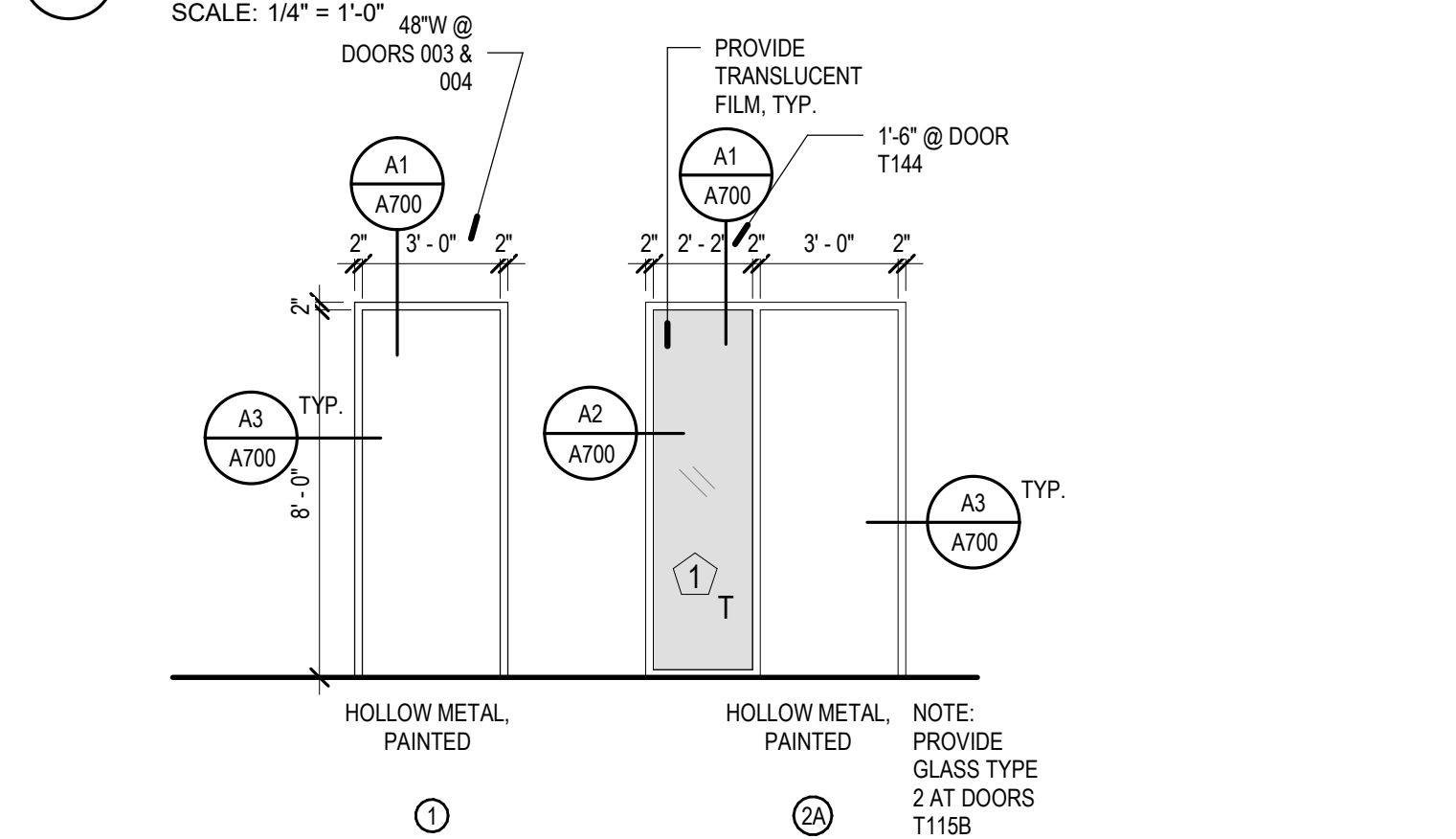
ITEM	MODEL NUMBER	ELECTRIC COORD. REQ'D	FINISH	MFR.
1 SET INTERIOR HINGE(S)	5B81HW SERIES			652 IVE
1 EA PANIC HARDWARE	25-4-L-NL-DANE			626 FAL
1 SET FSIC CYLINDER HOUSING(S)	AS REQ'D BY LOCKING HARDWARE			626 SCH
1 SET PERMANENT CORE(S)	23-030 CKC EV29S			626 SCH
1 SET CONSTRUCTION CORE(S)	23-030-ICX			626 SCH
1 EA ELECTRIC STRIKE	6300 FSE	YES		630 VON
1 EA SURFACE CLOSER	4050 RW/PA			689 LCN
1 EA KICK PLATE (PUSH SIDE)	8400 10" x 32" LW B-CS			630 IVE
1 EA DOOR STOP	WS407 SERIES / FS439			630 IVE
1 EA GASKETING	429A			719 ZER
1 EA DOOR BOTTOM	350-XA6			719 ZER
1 EA CARD READER	(SALVAGED / EXISTING)	YES		
1 EA DOOR CONTACT	(SALVAGED / EXISTING)	YES		
1 EA MOTION SENSOR	(SALVAGED / EXISTING)	YES		
1 SET WIRING & CONNECTIONS	BY DIVISION 26 / DIVISION 28	YES		B/O
1 SET CONDUIT & RACEWAY	BY DIVISION 26 / DIVISION 28	YES		B/O
1 EA LOW VOLTAGE POWER	BY DIVISION 26 / DIVISION 28	YES		B/O
1 SET WIRING DIAGRAMS	RISER/ELEVATION & SCHEMATIC	YES		DLR

OPERATIONAL DESCRIPTION

- DOOR IS NORMALLY CLOSED AND SECURE TO PREVENT UNAUTHORIZED ENTRY. VALID CREDENTIAL AT READER MOMENTARILY RELEASES STRIKE FOR ENTRY. DURING OWNER-DETERMINED TIMES, ACCESS CONTROL SYSTEM MAY HOLD ELECTRIC STRIKE IN RELEASED STATE TO ALLOW PUBLIC PUSH/PULL ENTRANCE.
- PANIC TOUCHBAR ALWAYS ALLOWS IMMEDIATE EGRESS.



B4 DOOR TYPES
SCALE: 1/4" = 1'-0"



A4 DOOR FRAME TYPES
SCALE: 1/4" = 1'-0"

GENERAL SHEET NOTES

1. OUTLETS ADJACENT TO WET AREAS OR WITHIN 6'-0" OF A SINK ARE TO BE GFCI PROTECTED.
2. THE EXACT LOCATION OF ALL ELECTRICAL DEVICES SHALL BE COORDINATED WITH THE OWNER/ ARCHITECT DURING A WALK-THROUGH PRIOR TO ROUGH-IN.
3. LOCATE ALL DISCONNECT SWITCHES ADJACENT TO EQUIPMENT IN ACCESSIBLE LOCATION. EACH DISCONNECT SWITCH LOCATION TO MEET ALL APPLICABLE WORKING CLEARANCE REQUIREMENTS.
4. CIRCUITING TO EXISTING DEVICES MAY BE MAINTAINED. FIELD VERIFY DEVICES THAT REMAIN ACTIVE ONCE DEMOLITION HAS BEEN COMPLETED. DRAWINGS SHOW CIRCUITING INTENT. EXACT CIRCUIT NUMBERS MAY BE DETERMINED IN THE FIELD BASED ON FIELD CONDITIONS. PROVIDE UPDATED TYPEWRITTEN PANEL SCHEDULES AT THE COMPLETION OF CONSTRUCTION.

SHEET KEYNOTES

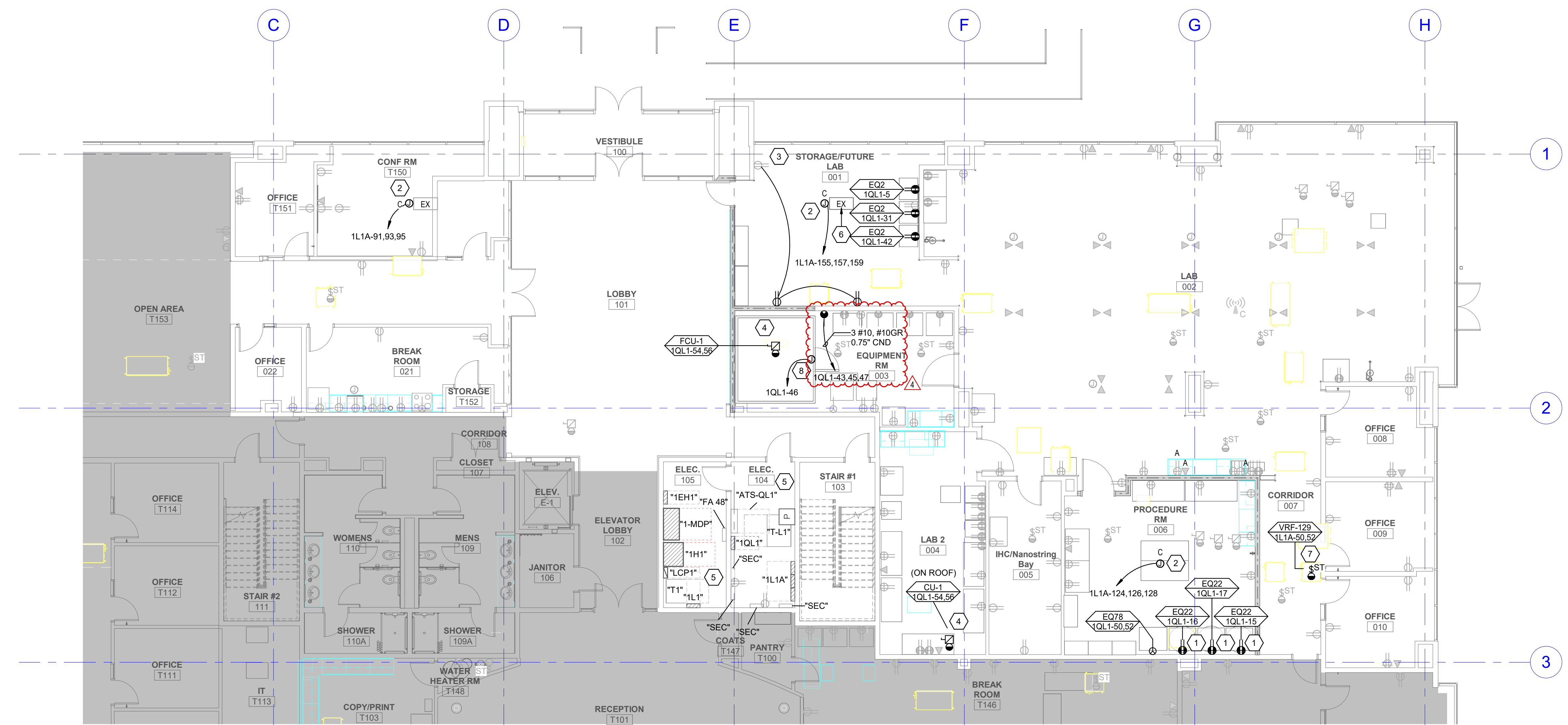
1. FIXTURES LABELED "(R)" ARE RELOCATED FIXTURES. EXTEND CIRCUITING AS REQUIRED FOR RELOCATION. VERIFY OUTLET LOCATION WITH ARCHITECT/OWNER PRIOR TO ROUGH-IN AND CIRCUIT TO ORIGINAL EMERGENCY CIRCUIT AS INDICATED.
2. ELECTRICAL CEILING PANEL, MOUNTED FLUSH WITH CEILING TILES. SEE DETAIL/PHOTOGRAPH "C2" ON SHEET EE01. THE EXACT NUMBER OF SPECIALTY RECEPTACLES IS TO BE VERIFIED WITH THE OWNER PRIOR TO ROUGH-IN. VERIFY EXACT LOCATION WITH ARCHITECT/ OWNER PRIOR TO ROUGH-IN.
3. CIRCUIT WITH EXISTING DEVICE AS INDICATED.
4. VERIFY EXACT LOCATION OF MECHANICAL EQUIPMENT CONNECTIONS WITH MECHANICAL DRAWINGS.
5. ALL EQUIPMENT IN THIS ROOM IS EXISTING TO REMAIN UNLESS NOTED OTHERWISE.
6. COORDINATE WITH GENERAL CONTRACTOR TO REMOVE FLOORBOX AND GRIND THE FLOOR AROUND THE FLOORBOX TO ALLOW THE COVER TO SIT FLUSH IN THE CONCRETE. PROTECT FLOORBOX DURING GRINDING AND WHILE FLOOR EPOXY IS BEING INSTALLED.
7. VRF IS TO BE VERIFIED WITH OWNER/ MECHANICAL CONTRACTOR PRIOR TO ROUGH-IN.
8. PROVIDE POWER FOR COLD ROOM LIGHTING AND DOOR HEAT CONNECTIONS. VERIFY EXACT LOCATIONS WITH COLD ROOM MANUFACTURER/ INSTALLERS.



REV	DATE	DESCRIPTION
3	09/13/2021	ADDENDUM #05
4	10/27/2021	PR #01

VCBO NUMBER: 21560
 CLIENT NUMBER:
 DATE: 07/27/2021

SPECTRUM ENGINEERS
 324 S. State St., Suite 400
 Salt Lake City, UT 84111
 800-678-7077
 801-328-5151
 fax: 801-328-5155
 www.spectrum-engineers.com



A1 LEVEL 1 POWER PLAN
 SCALE: 1/8" = 1'-0"

SUMITOMO DAINIPPON PHARMA TI
 FORGE COMPANIES
 3900 TRAVERSE MOUNTAIN BLVD, SUITE 100, LEHI, UTAH 84043
 CONSTRUCTION DOCUMENTS

NOTE: ALL EXISTING CIRCUITS ON THIS PANEL ARE LABELED "(EX)".

EXISTING PANEL: "1QL1"

Table with columns: VOLTS/PHASE/WIRE, PANEL SIZE & TYPE, MAIN SIZE AND TYPE, FED FROM, CABINET, LOCATION, NOTES. Includes accessories, phase load, and NEC diversified load calculations.

NOTE: ALL EXISTING CIRCUITS ON THIS PANEL ARE LABELED "(EX)".

EXISTING PANEL: "1L1A"

Table with columns: VOLTS/PHASE/WIRE, PANEL SIZE & TYPE, MAIN SIZE AND TYPE, FED FROM, CABINET, LOCATION, NOTES. Includes accessories, phase load, and NEC diversified load calculations.



Table with columns: REV, DATE, DESCRIPTION. Shows revision history.

VCBO NUMBER: 21560
CLIENT NUMBER:
DATE: 07/27/2021



SUMITOMO DAINIPPON PHARMA TI
FORGE COMPANIES
3900 TRAVERSE MOUNTAIN BLVD, SUITE 100, LEHI, UTAH 84043
CONSTRUCTION DOCUMENTS