



ADDENDUM 005

project	SDP Sumitomo Dainippon Pharma TI	project no	21560
date	2021-09-13	no. pages	
owner	SDP Sumitomo Dainippon Pharma Oncology		
contractor			
bid date	2021-09-16	bid time	2:00 pm

This Addendum shall be considered part of the Contract Documents and Project Manual for the above mentioned project as though it had been issued at the same time and shall be incorporated integrally therewith. Where provisions of the following supplementary data differ from those of the original Contract Documents and Project Manual, the Addendum shall govern and take precedence.

drawings

item	sheet#	description
5.1	EP101	Modifications made to 'Cold Room' - Equipment Room 003. See attached sheet.
5.2	EP601	Modifications made to Equipment Schedule. See attached sheet.
5.3	EP602	Modifications made to existing panel IQLI. See attached sheet.

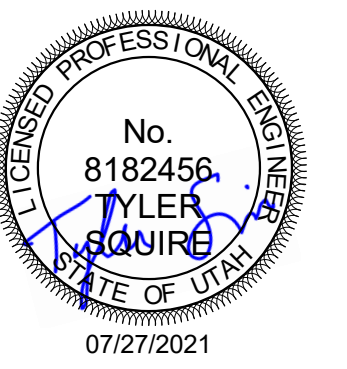
End of Addendum 005

GENERAL SHEET NOTES

1. OUTLETS ADJACENT TO WET AREAS OR WITHIN 6'-0" OF A SINK ARE TO BE GFCI PROTECTED.
2. THE EXACT LOCATION OF ALL ELECTRICAL DEVICES SHALL BE COORDINATED WITH THE OWNER/ ARCHITECT DURING A WALK-THROUGH PRIOR TO ROUGH-IN.
3. LOCATE ALL DISCONNECT SWITCHES ADJACENT TO EQUIPMENT IN ACCESSIBLE LOCATION. EACH DISCONNECT SWITCH LOCATION TO MEET ALL APPLICABLE WORKING CLEARANCE REQUIREMENTS.
4. CIRCUITING TO EXISTING DEVICES MAY BE MAINTAINED. FIELD VERIFY DEVICES THAT REMAIN ACTIVE ONCE DEMOLITION HAS BEEN COMPLETED. DRAWINGS SHOW CIRCUITING INTENT. EXACT CIRCUIT NUMBERS MAY BE DETERMINED IN THE FIELD BASED ON FIELD CONDITIONS. PROVIDE UPDATED TYPEWRITTEN PANEL SCHEDULES AT THE COMPLETION OF CONSTRUCTION.

SHEET KEYNOTES

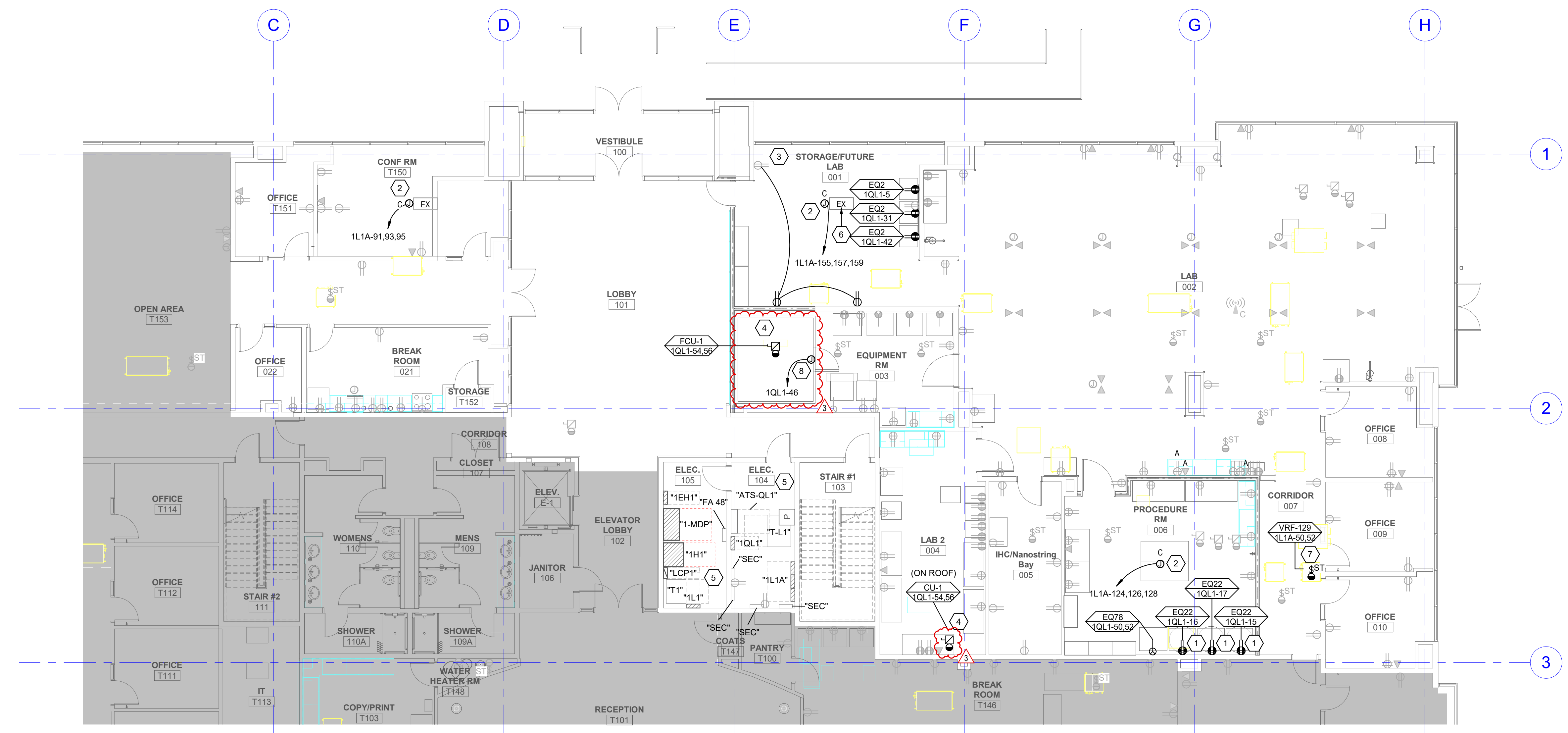
1. FIXTURES LABELED "(R)" ARE RELOCATED FIXTURES. EXTEND CIRCUITING AS REQUIRED FOR RELOCATION. VERIFY OUTLET LOCATION WITH ARCHITECT/OWNER PRIOR TO ROUGH-IN AND CIRCUIT TO ORIGINAL EMERGENCY CIRCUIT AS INDICATED.
2. ELECTRICAL CEILING PANEL, MOUNTED FLUSH WITH CEILING TILES. SEE DETAIL/PHOTOGRAPH "C2" ON SHEET EE01. THE EXACT NUMBER OF SPECIALTY RECEPTACLES IS TO BE VERIFIED WITH THE OWNER PRIOR TO ROUGH-IN. VERIFY EXACT LOCATION WITH ARCHITECT/ OWNER PRIOR TO ROUGH-IN.
3. CIRCUIT WITH EXISTING DEVICE AS INDICATED.
4. VERIFY EXACT LOCATION OF MECHANICAL EQUIPMENT CONNECTIONS WITH MECHANICAL DRAWINGS.
5. ALL EQUIPMENT IN THIS ROOM IS EXISTING TO REMAIN UNLESS NOTED OTHERWISE.
6. COORDINATE WITH GENERAL CONTRACTOR TO REMOVE FLOORBOX AND GRIND THE FLOOR AROUND THE FLOORBOX TO ALLOW THE COVER TO SIT FLUSH IN THE CONCRETE. PROTECT FLOORBOX DURING GRINDING AND WHILE FLOOR EPOXY IS BEING INSTALLED.
7. VRF IS TO BE VERIFIED WITH OWNER/ MECHANICAL CONTRACTOR PRIOR TO ROUGH-IN.
8. PROVIDE POWER FOR COLD ROOM LIGHTING AND DOOR HEAT CONNECTIONS. VERIFY EXACT LOCATIONS WITH COLD ROOM MANUFACTURER/ INSTALLERS.



REV	DATE	DESCRIPTION
3	09/13/2021	ADDENDUM #05

VCBO NUMBER: 21560
CLIENT NUMBER:
DATE: 07/27/2021

SPECTRUM ENGINEERS
324 S. State St., Suite 400
Salt Lake City, UT 84111
800-678-7077
801-328-5151
fax: 801-328-5155
www.spectrum-engineers.com



A1 LEVEL 1 POWER PLAN
SCALE: 1/8" = 1'-0"

SUMITOMO DAINIPPON PHARMA TI
FORGE COMPANIES
3900 TRAVERSE MOUNTAIN BLVD, SUITE 100, LEHI, UTAH 84043
CONSTRUCTION DOCUMENTS

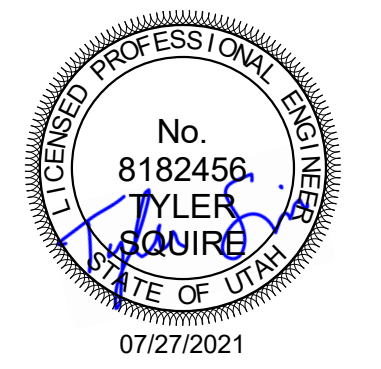
EQUIPMENT SCHEDULE

EQUIPMENT SCHEDULE KEY			NOTES:												GENERAL NOTES:											
E - DIVISION 26 Q - FURNISHED WITH EQUIPMENT * - COORDINATE WITH THE DIVISION 23 TEMPERATURE CONTROL INSTALLER ** - AUTOMATIC CONTROL WIRING BY DIVISION 23			1. NEMA 3R 2. TOGGLE SWITCH W/ THERMAL OVERLOAD. 3. PROVIDE FUSED DISCONNECT ELEVATOR POWER MODULE WITH SHUNT TRIP. 4. CONTRACTOR TO PERFORM FINAL CONNECTION TO LINE VOLTAGE THERMOSTATS. 5. TOGGLE SWITCH W/BACNET INTERFACE. 6. INDOOR UNITS FED FROM OUTDOOR UNIT. PROVIDE DISCONNECTS FOR BOTH. 7. PROVIDE SWITCH WITH BACNET MS/TP CAPABILITY. 8. PROVIDE LABEL ON DISCONNECT "DISCONNECT OUTDOOR UNIT PRIOR TO INDOOR." 9. LINE VOLTAGE THERMOSTAT ON WALL. 10. PROVIDE EXPLOSION PROOF DEVICES AND WIRING METHODS. 11. PROVIDE DUAL-REDUNDANT 100% RATED VFD'S FOR AIR HANDLER. 12. PROVIDE MANUAL STARTER WITH THERMAL OVERLOAD AND RELAY FOR ATC/BAS CONTROL.												1. WHERE DISCONNECTS, STARTERS, OR VFCs ARE BEING PROVIDED BY ELECTRICAL CONTRACTOR, LOCATE EQUIPMENT IN ACCESSIBLE LOCATION, SUCH THAT IT IS WITHIN SITE OF THE MECHANICAL EQUIPMENT IT IS SERVING, AND COMPLIES WITH N.E.C. REQUIRED CLEARANCES.											
MARK	QTY	ITEM DESCRIPTION	LOAD DATA						OVERCURRENT PROTECTION			DISCONNECT			STARTER			NOTES	MARK							
			HP	KW	MCA	FLA	VOL T	PH	Hz	WIRE AND CONDUIT SIZE	FURN BY	DEVICE	LOCATION	FURN BY	DEVICE	LOCATION	FURN BY			DEVICE	SIZES	SELECTOR SWITCH	PILOT LAMP	NORMALLY OPEN CONTACT	NORMALLY CLOSED CONTACT	PHASE FAILURE RELAY
CU-1	1	CONDENSING UNIT	-	-	-	11.4	208	1	60	2 #10, #10 GR 0.75" CND	E	30/2 CB	1QL1	E	30A/2P FRN-25	ADJ TO EQUIP	Q	-	-	-	-	-	-	-	NOTE 6	CU-1
FCU-1	1	DUCTLESS SPLIT SYSTEM INDOOR UNIT	-	-	-	1	208	1	60	2 #10, #10 GR 0.75" CND	E	30/2 CB	1QL1	E	30A/2P FRN-25	ADJ TO EQUIP	Q	-	-	-	-	-	-	-	NOTE 6	FCU-1
VRF-129	1	VRF - INDOOR UNIT	-	-	-	1	208	1	60	2 #12, #12 GR 0.75" CND	E	20/2 CB	1L1A	E	TOGGLE SWITCH	ADJ TO EQUIP	Q	-	-	-	-	-	-	-		VRF-129

OWNER EQUIPMENT SCHEDULE

SUMITOMO DAINIPPON PHARMA TI

MARK	QTY	ITEM DESCRIPTION	LOAD DATA						OVERCURRENT PROTECTION			DISCONNECT			NOTES	MARK		
			HP	KW	MCA	FLA	VOL T	PH	Hz	WIRE AND CONDUIT SIZE	FURN BY	DEVICE	LOCATION	FURN BY			DEVICE	LOCATION
EQ2	3	FREEZER	-	-	-	10	120	1	60	2 #12, 12 GR 0.75" CND	E	20/1 CB	1QL1	E		1QL1	1	EQ2
EQ22	3	CAGE CAROUSEL	-	-	-	6.7	120	1	60	2 #12, 12 GR 0.75" CND	E	20/1 CB	1QL1	E		1QL1	1	EQ22
EQ78	1	SMALL ANIMAL IRRADIATOR	-	-	-	30	208	1	60	2 #8, #10 GR 0.75" CND	E	40/2 CB	1QL1	E		1QL1	1	EQ78



REV	DATE	DESCRIPTION
3	09/13/2021	ADDENDUM #05

VCBO NUMBER: 21560
CLIENT NUMBER:
DATE: 07/27/2021



SUMITOMO DAINIPPON PHARMA TI

FORGE COMPANIES
3900 TRAVERSE MOUNTAIN BLVD, SUITE 100, LEHI, UTAH 84043
CONSTRUCTION DOCUMENTS

NOTE: ALL EXISTING CIRCUITS ON THIS PANEL ARE LABELED "(EX)".

EXISTING PANEL: "1QL1"

VOLTS/PHASE/WIRE:		PANEL SIZE & TYPE:		MAIN SIZE AND TYPE:		FED FROM:	CABINET:	LOCATION:	NOTES:				
120/208V, 3 PH 4 WIRE		22" W x 6" D, BOLT-ON		225 AMPERE			SURFACE	ELEC. 104					
ACCESSORIES: PANEL DIRECTORY, IDENTIFICATION, GROUNDING BAR													
CKT NO	AMP	POLE	BKR	LOAD (kVA)	DESCRIPTION	PHASE LOAD			LOAD (kVA)	OCP	CKT NO		
						A	B	C					
1	20	1	--	--	(EX) FREEZER T141	0.0	0.0				1	15	2
3	20	1	--	--	(EX) FREEZER RM T141						1	15	4
5	20	1	--	0.0 1.2 0.0	PWR: (EQ2) FREEZER			1.2	0.0		1	15	6
7	20	1	--	--	(EX) FREEZER T141	0.0	0.0				1	20	8
9	20	1	--	--	(EX) FREEZER T140-2						1	20	10
11	20	1	--	--	(EX) FREEZER T140-2						1	20	12
13	30	1	--	--	(EX) WATER PURIFICATION T140-2	0.0	0.0				1	20	14
15	20	1	--	0.0 0.8 0.0	PWR: (EQ22) CAGE CAROUSEL		0.8	0.8		0.0	1	20	16
17	20	1	--	0.0 0.8 0.0	PWR: (EQ22) CAGE CAROUSEL			0.8	0.0		1	20	18
19	20	1	--	--	(EX) INCUBATOR T140	0.0	0.0				1	20	20
21	20	1	--	--	(EX) INCUBATOR T140		0.0	0.0			1	20	22
23	20	1	--	--	(EX) INCUBATOR T140			0.0	0.0		1	20	24
25	20	1	--	--	(EX) NUAIRE, BSC II, A2 (EQ21AA)	0.0	0.0				1	20	26
27	20	1	--	--	(EX) DED EM OUTLET IT T113		0.0	0.0			1	20	28
29	20	1	--	--	(EX) DED EM OUTLET IT T113			0.0	0.0		1	20	30
31	20	1	--	0.0 1.2 0.0	PWR: (EQ2) FREEZER	1.2	0.0				1	20	32
33	20	1	--	--	(EX) POWER LAB 3-2 T140-2		0.0	0.0			1	20	34
35	20	1	--	--	(EX) POWER LAB 3-2 T140-2			0.0	0.0		1	20	36
37	20	1	--	--	(EX) EF-1 T137	0.0	0.0				1	20	38
39	20	1	--	--	(EX) POWER LAB 3-2 T140-2		0.0	0.0			1	20	40
41	20	1	--	--	(EX) POWER LAB 3-2 T140-2			0.0	1.2		1	20	42
43	20	1	--	--	SPARE	0.0	0.0				1	20	44
45	20	1	--	--	SPARE		0.0	0.2			1	20	46
47	20	1	--	--	SPARE			0.0	0.0		1	20	48
49	20	1	--	--	SPARE	0.0	3.1				2	40	50
51	20	1	--	--	SPARE		0.0	3.1			2	40	52
53	20	1	--	--	SPARE			0.0	2.4		2	20	54
55	20	1	--	--	SPARE	0.0	2.4				1	20	56
57	20	1	--	--	TOLERO I.T. SPLIT			0.0	0.0		1	20	58
59	20	1	--	--	SPARE			0.0	0.0		1	20	60
TOTALS:						CONNECTED KVA PER PHASE	7	5	6	CONNECTED TOTAL KVA =	17		
						CONNECTED AMPS PER PHASE	56	41	47	AVERAGE CONNECTED AMPS PER PHASE =	48		
NEC DIVERSIFIED LOAD CALCULATIONS													
LIGHTING & CONTINUOUS LOADS:			- 100% CONNECTED LOAD PLUS 25%			DIVERSIFIED TOTAL KVA =			19				
RECEPTACLES:			- FIRST 10kVA @ 100%, REMAINDER @ 50%			AVERAGE AMPS PER PHASE =			52				
ALL OTHER LOADS @ 100%:			18.7 KVA			MOTOR TOTALS INCLUDED IN ALL OTHER LOADS WITH LARGEST MOTOR CALCULATED @ 125% PER NEC							
BKR: GF=GFCI, GF3=30mA GFCI CAPABLE OF BEING LOCKED OUT IN OPEN POSITION, IG=ISOLATED GROUND, AF=AFCI, ST=SHUNT TRIP, RED=PROVIDE RED COLORED BREAKER, AF=ARC FAULT CURRENT INTERRUPTER, GA=COMBINATION OF GROUND FAULT AND ARC FAULT CIRCUIT INTERRUPTER, GS=COMBINATION OF SHUNT TRIP WITH GFCI													

NOTE: ALL EXISTING CIRCUITS ON THIS PANEL ARE LABELED "(EX)".

EXISTING PANEL: "1L1A"

VOLTS/PHASE/WIRE:		PANEL SIZE & TYPE:		MAIN SIZE AND TYPE:		FED FROM:	CABINET:	LOCATION:	NOTES:				
120/208V, 3 PH 4 WIRE		22" W x 6" D, BOLT-ON		600 AMPERE			SURFACE	ELEC. 104					
ACCESSORIES: PANEL DIRECTORY, IDENTIFICATION, GROUNDING BAR													
CKT NO	AMP	POLE	BKR	LOAD (kVA)	DESCRIPTION	PHASE LOAD			LOAD (kVA)	OCP	CKT NO		
						A	B	C					
1	20	1	--	--	(EX) LIGHTING RECEPTION T101	0.0	0.0				1	20	2
3	20	1	--	--	(EX) RED TAPE LIGHT T101						1	20	4
5	20	1	--	--	(EX) UC DISHWASHER T153						1	20	6
7	50	1	--	--	(EX) RANGE T153	0.0	0.0				1	20	8
9	50	1	--	--	SPARE						1	20	10
11	20	1	--	--	(EX) SHREDDER T103						1	20	12
13	20	1	--	--	(EX) MICROWAVE T153	0.0	0.0				1	20	14
15	20	1	--	--	(EX) ICE MACHINE T153		0.0	0.0			1	20	16
17	20	1	--	--	SPARE						1	20	18
19	20	1	--	--	(EX) MICROWAVE T104	0.0	0.0				1	20	20
21	20	1	--	--	(EX) ICE MACHINE T104		0.0	0.0			1	20	22
23	20	1	--	--	(EX) UC REFRIGERATOR T104			0.0	0.0		1	20	24
25	20	1	--	--	(EX) BSC T137	0.0	0.0				1	20	26
27	20	1	--	--	(EX) BSC T137		0.0	0.0			1	20	28
29	20	1	--	--	(EX) REFRIGERATOR T140			0.0	0.0		1	20	30
31	20	1	--	--	(EX) BSC T140	0.0	0.0				1	20	32
33	20	1	--	--	(EX) BSC T140		0.0	0.0			1	20	34
35	20	1	--	--	(EX) BSCT140			0.0	0.0		1	20	36
37	20	1	--	--	(EX) WATER DISPENSER T127	0.0	0.0				1	20	38
39	20	1	--	--	(EX) UC REFRIGERATOR T127			0.0	0.0		1	20	40
41	20	1	--	--	(EX) UC DISHWASHER T127			0.0	0.0		1	20	42
43	50	1	--	--	(EX) RANGE T127	0.0	0.0				1	20	44
45	50	1	--	--	SPARE						1	20	46
47	20	1	--	--	(EX) ROOM 106 SOUTH			0.0	0.0		1	20	48
49	20	1	--	--	(EX) MICROWAVE T127		0.0	0.1			1	20	50
51	20	1	--	--	(EX) MICROWAVE T127			0.0	0.1		1	20	52
53	20	1	--	--	(EX) CO FUTURE T153			0.0	0.0		1	20	54
55	20	1	--	--	(EX) COUNTER CO T153	0.0	0.0				1	20	56
57	20	1	--	--	(EX) COUNTER CO CONF RM T106			0.0	0.0		1	20	58
59	20	1	--	--	(EX) CO T106, T105			0.0	0.0		1	20	60
61	20	1	--	--	(EX) CO OFFICE T117	0.0	0.0				1	20	62
63	20	1	--	--	(EX) INSTA HOT		0.0	0.0			1	20	64
65	20	1	--	--	(EX) CO OFFICE T119			0.0	0.0		1	20	66
67	20	1	--	--	(EX) CO ROOM T109, T111, T110	0.0	0.0				1	20	68
69	20	1	--	--	(EX) CO ROOM T115, T116		0.0	0.0			1	20	70
71	20	1	--	--	(EX) CO COPY/PRINT T103			0.0	0.0		1	20	72
73	20	1	--	--	(EX) CO	0.0	0.0				1	20	74
75	20	1	--	--	(EX) FLOORBOX RECEPTION T101			0.0	0.0		1	20	76
77	20	1	--	--	(EX) FLOORBOX BOARD ROOM...			0.0	0.0		1	20	78
79	20	1	--	--	(EX) FLOORBOX BOARD ROOM...	0.0	0.0				1	20	80
81	20	1	--	--	(EX) ROOM 106 NORTH		0.0	0.0			1	20	82
83	20	1	--	--	SPARE			0.0	0.0		1	20	84
85	20	1	--	--	(EX) CO BREAK ROOM T127	0.0	0.0				1	20	86
87	20	1	--	--	(EX) POWER BREAK ROOM T127			0.0	0.0		1	20	88
89	20	1	--	--	(EX) CO BREAK ROOM T127			0.0	0.0		1	20	90
91	20	3	--	0.0 1.1 0.0	PWR: ELEC. CEILING PANEL	0.4	0.0				1	20	92
93	--	--	--	--	--			0.4	0.0		1	20	94
95	--	--	--	--	--						1	20	96
97	20	1	--	--	(EX) CO ROOM T144, T142	0.0	0.0				1	20	98
99	20	1	--	--	(EX) CO ROOM T132, T137		0.0	0.0			1	20	100
101	20	1	--	--	(EX) CO FLUORIMICRO T132			0.0	0.0		1	20	102
103	20	1	--	--	(EX) CO ROOM T131, T140-2	0.0	0.0				1	20	104
105	20	1	--	--	(EX) CO ROOM T139, T140			0.0	0.0		1	20	106
107	20	1	--	--	(EX) VRF-109, 126, 128, T140-2			0.0	0.0		1	20	108
109	20	1	--	--	SPARE						1	20	110
111	20	1	--	--	(EX) CO ROOM T140-2, T143		0.0	0.0			1	20	112
113	20	1	--	--	(EX) VRF-101,107,109 T153			0.0	0.0		1	20	114
115	20	1	--	--	SPARE			0.0	0.0		1	20	116
117	20	1	--	--	(EX) VRF-104,113,114 T116, T113...			0.0	0.0		1	20	118
119	20	1	--	--	SPARE			0.0	0.0		1	20	120
121	20	1	--	--	(EX) VRF-116,117,118 T126, T127	0.0	0.0				1	20	122
123	20	1	--	--	SPARE			0.0	0.4		3	20	124
125	20	1	--	--	(EX) CO LAB 3-2 T140-2				0.4		--	--	126
127	20	1	--	--	(EX) PWR: FURN LABS-2 T140-2	0.0	0.4				--	--	128
129	20	1	--	--	(EX) VRF-124,125 RM T141			0.0	0.0		1	20	130
131	20	1	--	--	SPARE				0.0	0.0	1	20	132
133	20	1	--	--	(EX) VRF-110,111,112 T115, T116	0.0	0.0				1	30	134
135	20	1	--	--	SPARE			0.0	0.0		1	30	136
137	20	1	--	--	(EX) VRF-119,121,122 T131, T140-...				0.0	0.0	1	30	138
139	20	1	--	--	SPARE			0.0	0.0		1	20	140
141	20	1	--	--	(EX) INSTA-HOT BREAK ROOM...		0.0	0.0			1	20	142
143	20	1	--	--	(EX) RECIRC PUMP RCP-1			0.0	0.0		1	20	144
145	20	1	--	--	(EX) BC-7	0.0	0.0				1	20	146
147	20	1	--	--	SPARE			0.0	0.0		1	20	148
149	20	1	--	--	SPARE				0.0	0.0	1	20	150
151	20	1	--	--	(EX) UC REFRIGERATOR T106	0.0	0.0				1	20	152
153	20	1	--	--	(EX) FUTURE T153 RANGE HOOD	0.0	0.0				1	20	154
155	20	3	--	0.0 1.1 0.0	PWR: ELEC. CEILING PANEL			0.4	0.0		1	20	156
157	--	--	--	--	--		0.4	0.0			1	20	158
159	--	--	--	--	--			0.4	0.0		1	20	160
161	20	1	--	--	SPARE				0.0	0.0	1	20	162
163	20	1	--	--									