

KEYED NOTES

- 202.1 EXISTING WINDOW SYSTEM TO REMAIN, PROTECT AS REQUIRED
- 2604.3 LIGHT FIXTURE - SUSPENDED LIGHT FIXTURE - REFER ELECTRICAL DRAWINGS

GENERAL CEILING NOTES

- 1. REMOVE OR MASK OFF ALL CEILING MOUNTED DEVICES PRIOR TO PAINTING.
- 2. REFER TO ARCHITECTURAL DRAWINGS FOR LOCATIONS OF LIGHT FIXTURES AND TO ELECTRICAL DRAWINGS FOR QUANTITY AND TYPES.

CEILING LEGEND (EXISTING)

- A - SUSPENDED 2' X 2' ACOUSTICAL LAY-IN TILE CEILING
- B - SUSPENDED 2' X 4' ACOUSTICAL LAY-IN TILE CEILING
- C - SUSPENDED 5/8" GYP. BD. CEILING SYSTEM - PAINT
- D - SUSPENDED 5/8" EXTERIOR GYP. SOFFIT BD. - PAINT
- E - SUSPENDED 5/8" GYP. BD. CEILING SYSTEM - EPOXY PAINT
- G - OPEN TO STRUCTURE ABOVE
- H - WOOD CEILING SYSTEM - PAINT ALL BUILDING STRUCTURE, OVERHEAD MEP UTILITIES, ETC. ABOVE WOOD CEILING
- I - CUSTOM WOOD CEILING
- J - WOODWORKS PLANK CEILING OR APPROVED EQUAL - REFER SPECIFICATIONS
- K - LINEAR ACOUSTICAL TILE CEILING 1' X 6' - PAINT ALL BUILDING STRUCTURE, OVERHEAD MEP UTILITIES, ETC. A MIN. OF 24" OVERLAP OF ACOUSTICAL CEILING
- L - SPRAY APPLIED ACOUSTICAL CLOSED CELL INSULATION - 1-1/2" MIN - PAINT ALL BUILDING STRUCTURE, OVERHEAD MEP UTILITIES, ETC. TO MATCH INSULATION COLOR

CEILING SYMBOLS

ELECTRICAL

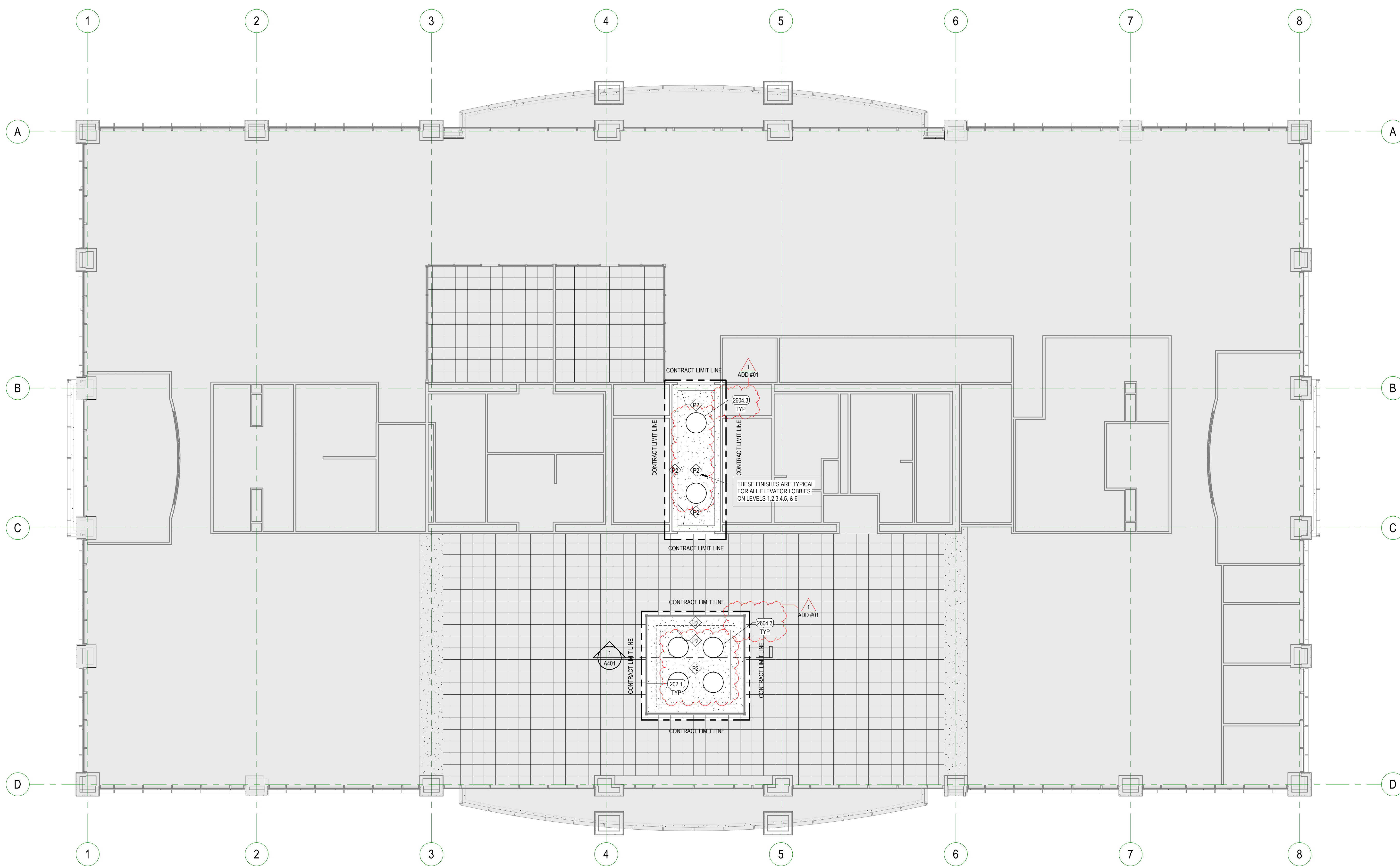
- 2'X4' FLUORESCENT FIXTURE
- 2'X2' FLUORESCENT FIXTURE
- 1'X4' FLUORESCENT FIXTURE
- FLUORESCENT STRIP FIXTURE
- RECESSED DOWN LIGHT
- WALL WASH
- 1'X4' FLUORESCENT FIXTURE
- PENDANT LIGHT FIXTURE
- EXIT SIGN, SINGLE-SIDED
- EXIT SIGN, DOUBLE-SIDED
- FIRE ALARM
- SPEAKER
- SMOKE DETECTOR
- WIRELESS INTERNET

MECHANICAL

- SUPPLY GRILLE
- RETURN GRILLE
- EXHAUST GRILLE
- LINEAR DIFFUSER
- SPRINKLER HEAD - CEILING MOUNT
- SPRINKLER HEAD - WALL MOUNT

REV	DATE	DESCRIPTION
1	1-26-2022	ADD #01

VCBO NUMBER: 20235.01
 CLIENT NUMBER: 00000
 DATE: 01-15-2022



A1 REFLECTED CEILING PLAN - LEVEL 02

SCALE: 1/8" = 1'-0"