

ELECTRIC VEHICLE CHARGING STATIONS

PROJECT NO. 54 3030 1738

SALT LAKE CITY DEPARTMENT OF AIRPORTS

**Engineering Division
P. O. Box 145550
Salt Lake City, Utah 84114-5550**

(801) 575-2900

ADDENDUM NO. 1

April 22, 2021

All Contractors submitting bids on the project referenced above shall be governed by the following addendum changes and/or clarifications and the work designated herein shall be part of and included in the contract and contract documents.

The Contractors shall acknowledge receipt of the addendum by indicating so in the space provided in Section 2 of the bid form.

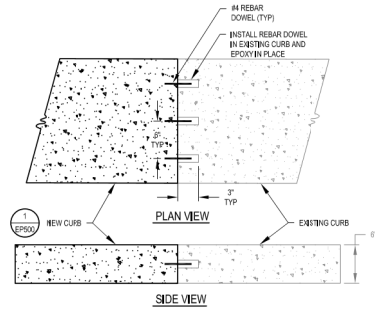
This addendum consists of (4) four pages including this page.

**Scott Martin, AIA
Facilities Engineering Manager**

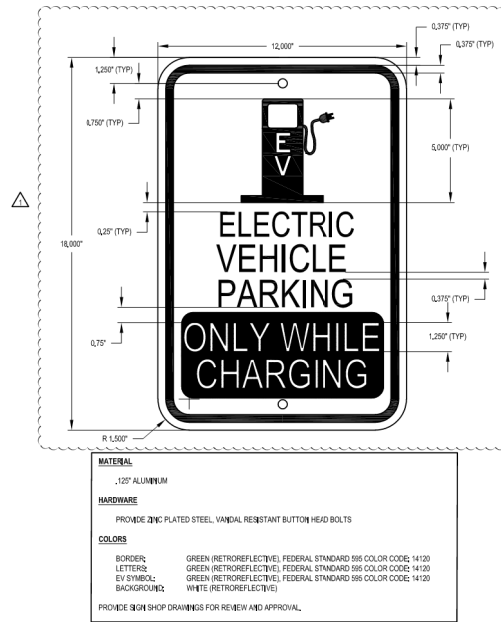
ADDENDUM NO. 1
ELECTRIC VEHICLE CHARGING STATIONS
Project No. 54 3030 1738

PROJECT PLAN CHANGES

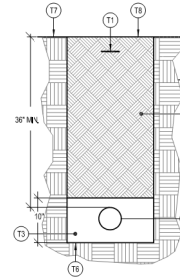
- | | |
|--------------------------|---|
| <u>ITEM NO. 1</u> | Updated EVCS Sign Detail on EP500. |
| <u>ITEM NO. 2</u> | Updated feeder wire sizes on EP600. |
| <u>ITEM NO. 3</u> | Modified the Electric Vehicle Charging Stations Branch Schedule on EP600. |
| <u>ITEM NO. 4</u> | Added Electric Vehicle Charging Stations Branch Schedule for Lot E North on EP600. |



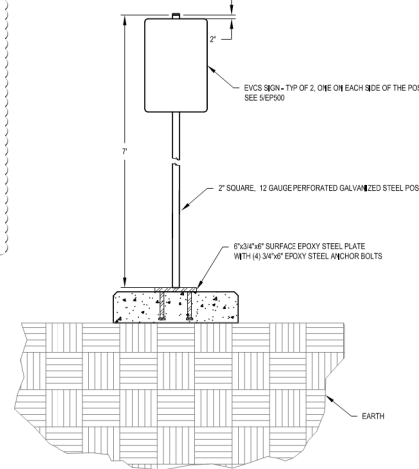
6 NEW CURB ATTACHMENT DETAIL
SCALE: NONE



5 EVCS SIGN DETAIL
SCALE: NONE



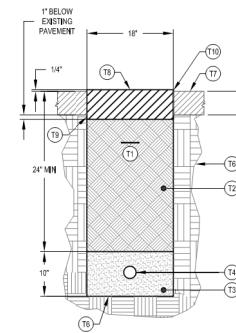
4 UNDERGROUND CONDUIT DETAIL - LANDSCAPE
SCALE: NONE



3 TYPICAL PARKING LOT BREAKAWAY SIGN POST DETAIL
SCALE: NONE

TRENCHING KEYED NOTES:

- (T1) MARKER TAPE WITH TRACER WIRE LABELED, "CAUTION BURIED ELECTRIC CONDUITS BELOW" DIRECTLY OVER POWER CONDUITS 6\"/>
- (T2) CLEAN BACKFILL CONTAINING NO ROCKS LARGER THAN 2\"/>
- (T3) BACKFILL MATERIAL WITHIN 4\"/>
- (T4) ALL CONDUITS SHOWN SHALL BE SCHEDULE 40 PVC. REFER TO PLANS FOR QUANTITY AND SIZE.
- (T5) UNDISTURBED EARTH.
- (T6) TRENCHES SHALL BE A UNIFORM DEPTH FOR ENTIRE LENGTH OF TRENCH SO CONDUITS CAN SET FLAT HORIZONTAL WITH THE GROUND.
- (T7) FINISHED GRADE.
- (T8) PATCH REPAIR TO MATCH EXISTING SURFACE.



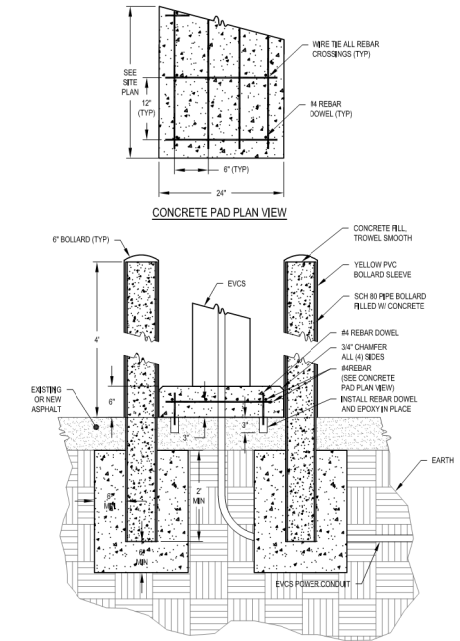
2 UNDERGROUND CONDUIT DETAIL - PAVEMENT
SCALE: NONE

TRENCHING KEYED NOTES:

- (T1) MARKER TAPE WITH TRACER WIRE LABELED, "CAUTION BURIED ELECTRIC CONDUITS BELOW" DIRECTLY OVER POWER CONDUITS 6\"/>
- (T2) FLOWABLE FILL (800 FFB).
- (T3) BACKFILL MATERIAL WITHIN 4\"/>
- (T4) ALL CONDUITS SHOWN SHALL BE SCHEDULE 40 PVC. REFER TO PLANS FOR QUANTITY AND SIZE.
- (T5) UNDISTURBED EARTH.
- (T6) TRENCHES SHALL BE A UNIFORM DEPTH FOR ENTIRE LENGTH OF TRENCH SO CONDUITS CAN SET FLAT HORIZONTAL WITH THE GROUND.
- (T7) EXISTING 3\"/>
- (T8) REMOVE EXISTING 3\"/>
- (T9) PLACE BITUMINOUS TACK COAT (P603) AT EDGES.
- (T10) SAWCUT THE BROKEN AREAS.

TRENCHING GENERAL NOTES:

1. PROVIDE 1/4\"/>
- 2. ALL MARKER TAPE SHALL CONTAIN #10 TRACER WIRE.
- 3. WHERE MULTIPLE CONDUITS ARE INSTALLED IN SAME TRENCH, PROVIDE MINIMUM 1\"/>



1 TYPICAL PARKING LOT EVCS CONCRETE PAD AND BOLLARD DETAIL
SCALE: NONE



REVISIONS				
No.	DATE	REMARKS	BY	APV
1	04/22/21	Addendum 1	B.B.	A.P.

DESIGNED: BRENT BUTLER
DRAWN: BRENT BUTLER
CHECKED: ALEKSANDAR RANKOVIC
APPROVED: _____
DATE: APRIL 9, 2021



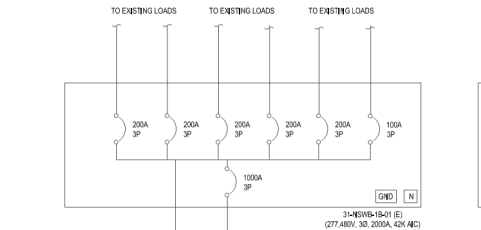
ENGINEERING DIVISION
SALT LAKE CITY
DEPARTMENT OF AIRPORTS
P.O. BOX 145550
SALT LAKE CITY, UT. 84114-5550

SALT LAKE CITY INTERNATIONAL AIRPORT
ELECTRICAL VEHICLE
CHARGING STATIONS
DETAILS

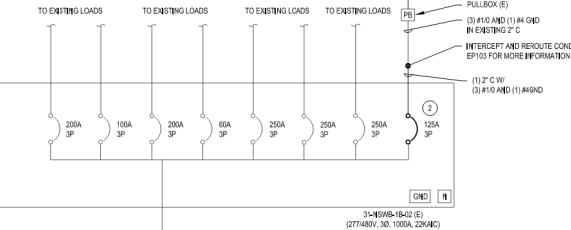
SCALE: AS NOTED
DRAWING: EP500
PROJECT: SA_2020_1783
SHEET: 7 OF 11

EVCS SCHEDULE								
UNIT NAME	PROVIDED BY	DESCRIPTION	LOAD	VOLTAGE	PHASE	AMPERAGE	CONDUIT AND WIRE	CONNECTION TYPE
EVCS-001	(1)2 FURNISHED AND INSTALLED BY CIV 20	BOLLARD MOUNT DUAL PORT LEVEL 2 CUPPER CREEK HCS&H, PEDESTAL, EXTENSION, AND CABLE MANAGEMENT	700KA	208	1	32	SEE ONE-LINE DIAGRAMS	DIRECT CONNECT
EVCS-002	(1)0 FURNISHED BY AIRPORT		700KA	208	1	32	SEE ONE-LINE DIAGRAMS	DIRECT CONNECT
EVCS-003	(1)0 FURNISHED BY AIRPORT		700KA	208	1	32	SEE ONE-LINE DIAGRAMS	DIRECT CONNECT
EVCS-004	(1)0 FURNISHED BY AIRPORT		700KA	208	1	32	SEE ONE-LINE DIAGRAMS	DIRECT CONNECT
EVCS-005	(1)0 FURNISHED BY AIRPORT		700KA	208	1	32	SEE ONE-LINE DIAGRAMS	DIRECT CONNECT
EVCS-006	(1)0 FURNISHED BY AIRPORT		700KA	208	1	32	SEE ONE-LINE DIAGRAMS	DIRECT CONNECT
EVCS-007	(1)0 FURNISHED BY AIRPORT		700KA	208	1	32	SEE ONE-LINE DIAGRAMS	DIRECT CONNECT
EVCS-008	(1)0 FURNISHED BY AIRPORT		700KA	208	1	32	SEE ONE-LINE DIAGRAMS	DIRECT CONNECT
EVCS-009	(1)0 FURNISHED BY AIRPORT		700KA	208	1	32	SEE ONE-LINE DIAGRAMS	DIRECT CONNECT
EVCS-010	(1)0 FURNISHED BY AIRPORT		700KA	208	1	32	SEE ONE-LINE DIAGRAMS	DIRECT CONNECT

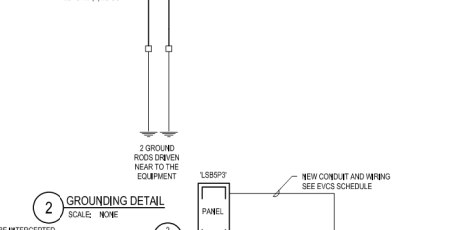
NOTES:
1. EACH EVCS SHALL BE FED BY (1) 40A, 2-POLE CIRCUIT BREAKER.



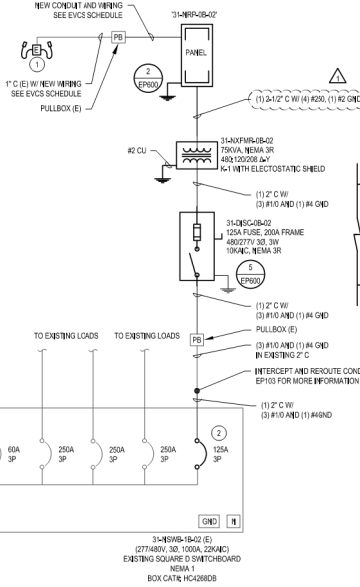
6 LOT E - PARTIAL ONE-LINE DIAGRAM
SCALE: NONE



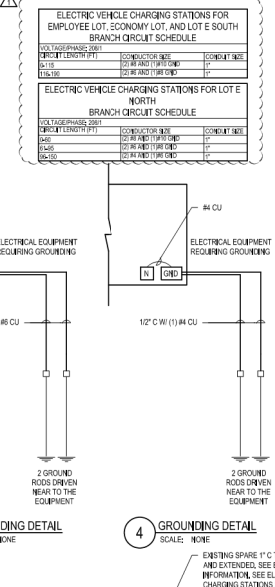
3 EMPLOYEE PARKING LOT - PARTIAL ONE-LINE DIAGRAM
SCALE: NONE



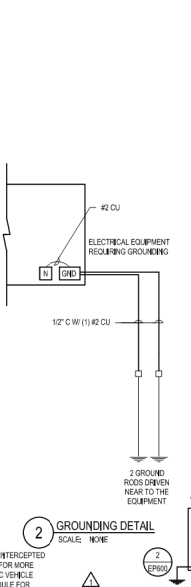
1 ECONOMY PARKING LOT - PARTIAL ONE-LINE DIAGRAM
SCALE: NONE



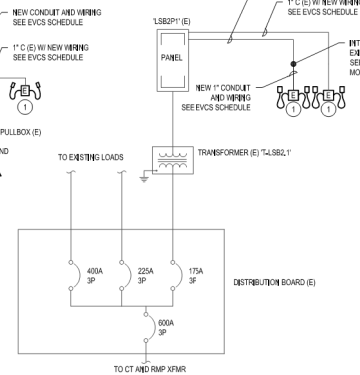
5 GROUNDING DETAIL
SCALE: NONE



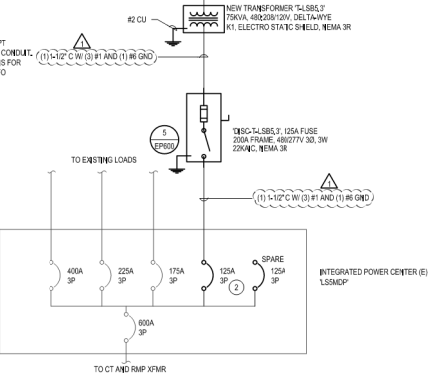
4 GROUNDING DETAIL
SCALE: NONE



2 GROUNDING DETAIL
SCALE: NONE



3 EMPLOYEE PARKING LOT - PARTIAL ONE-LINE DIAGRAM
SCALE: NONE



1 ECONOMY PARKING LOT - PARTIAL ONE-LINE DIAGRAM
SCALE: NONE

ELECTRIC VEHICLE CHARGING STATIONS FOR EMPLOYEE LOT, ECONOMY LOT, AND LOT E SOUTH BRANCH CIRCUIT SCHEDULE			
VOLTAGE/PHASE/TYPE	CONDUCTOR SIZE	CONDUIT SIZE	CONDUIT TYPE
208/1	2\"/>		

- KEYED NOTES:**
- TYPICAL NEW EVCS. SEE SITE PLANS FOR LOCATIONS AND QUANTITY. SEE SCHEDULE FOR DETAILS.
 - PROVIDE NEW LOCKABLE CIRCUIT BREAKER IN EXISTING SPACE. PROVIDE HANDLE CLAMP FOR HOLDING CIRCUIT BREAKER "ON" OR "OFF" POSITION. NEW BREAKER SHALL BE OF THE SAME MANUFACTURER AND RC-RATING AS EXISTING DISTRIBUTION PANEL. PROVIDE NEW 1/16\"/>

ENVISION ENGINEERING
240 East Merrill Ave. Suite 200
South Salt Lake City, UT 84115
• (801) 554-1130
• (801) 554-1080
www.envisioneng.com



REVISIONS				
No.	DATE	REMARKS	BY	APV
1	04/22/21	Addendum 1	A.R.	B.B.

DESIGNED BRENT BUTLER
DRAWN BRENT BUTLER
CHECKED ALEKSANDAR RANKOVIC
APPROVED _____
DATE APRIL 9 2021



ENGINEERING DIVISION
SALT LAKE CITY
DEPARTMENT OF AIRPORTS
P.O. BOX 145550
SALT LAKE CITY, UT 84114-5550

SALT LAKE CITY INTERNATIONAL AIRPORT
ELECTRIC VEHICLE CHARGING STATIONS
ONE-LINE DIAGRAMS

SCALE: AS NOTED
DRAWING EP600
PROJECT 54_3030_1283
SHEET 9 OF 11