



KEY PLAN

REVISION	NO.	DESCRIPTION	DATE

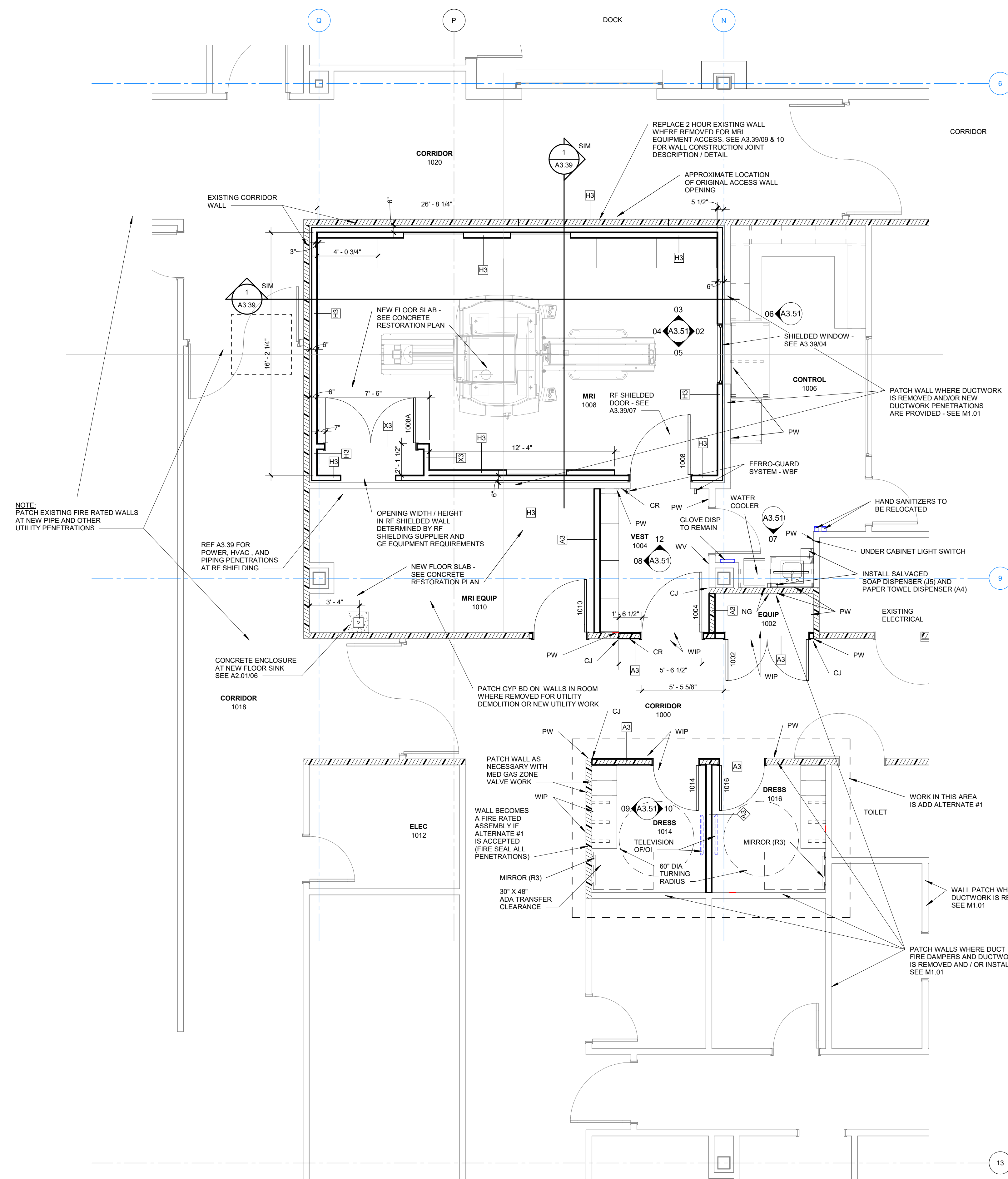
HKS PROJECT NUMBER
23798.000

DATE
03/23/2020

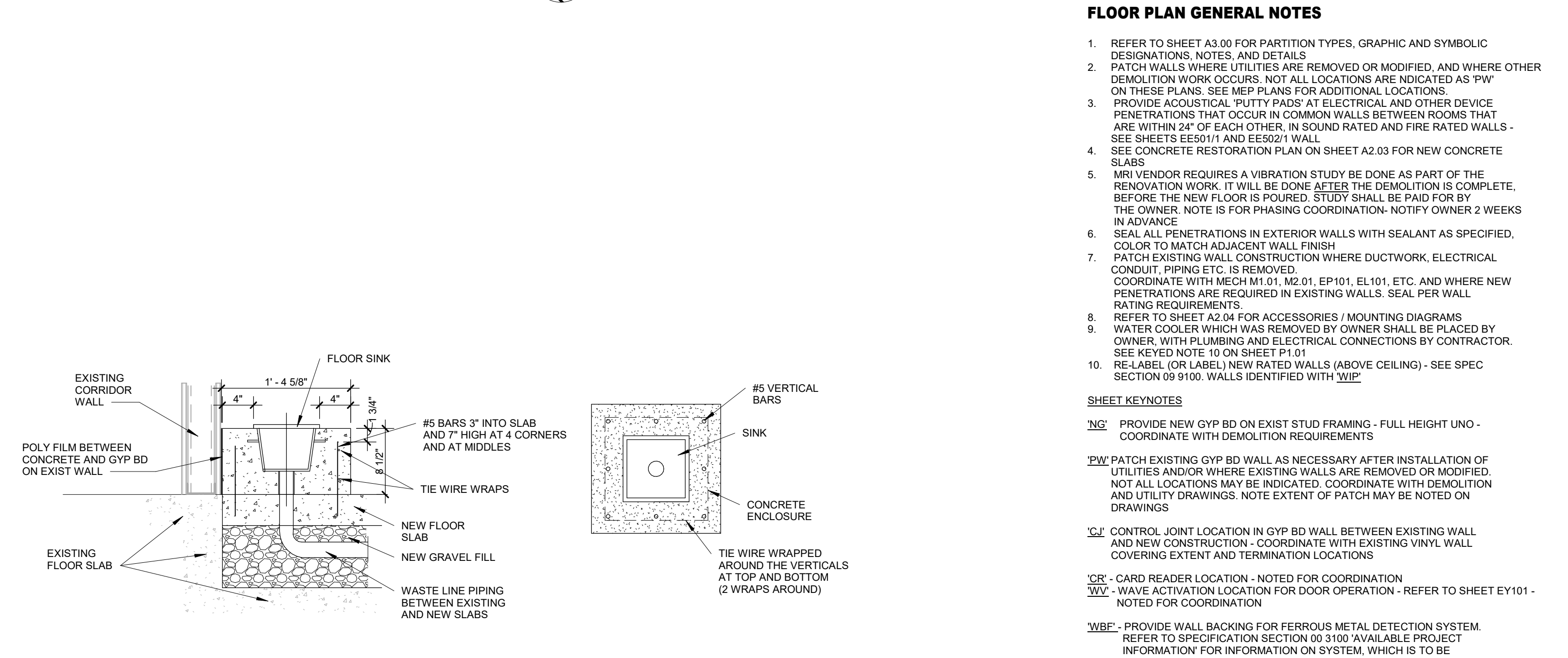
ISSUE
CONSTRUCTION DOCUMENTS

SHEET TITLE
PLANS / DOOR INFORMATION

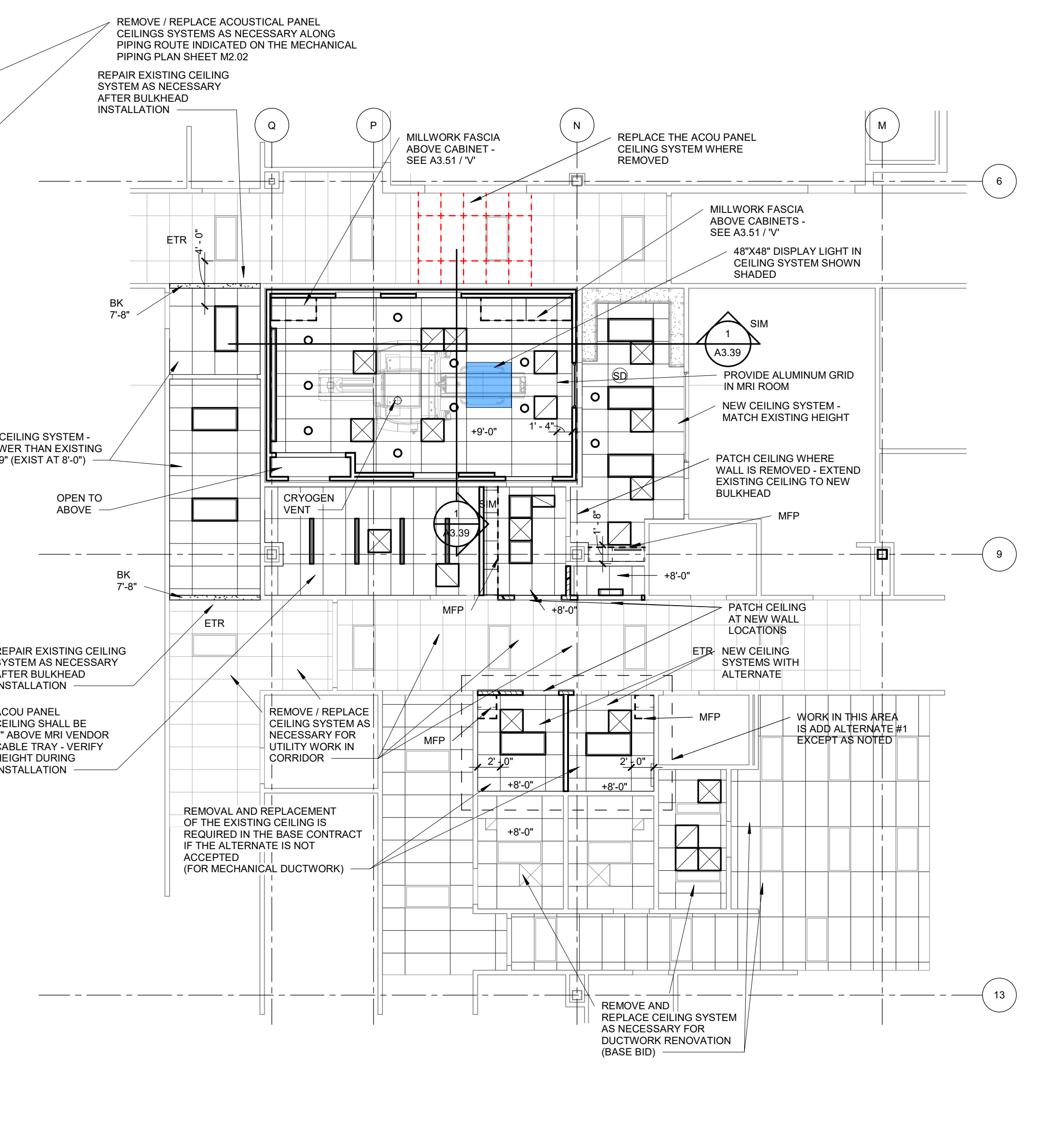
SHEET NO.
A2.01



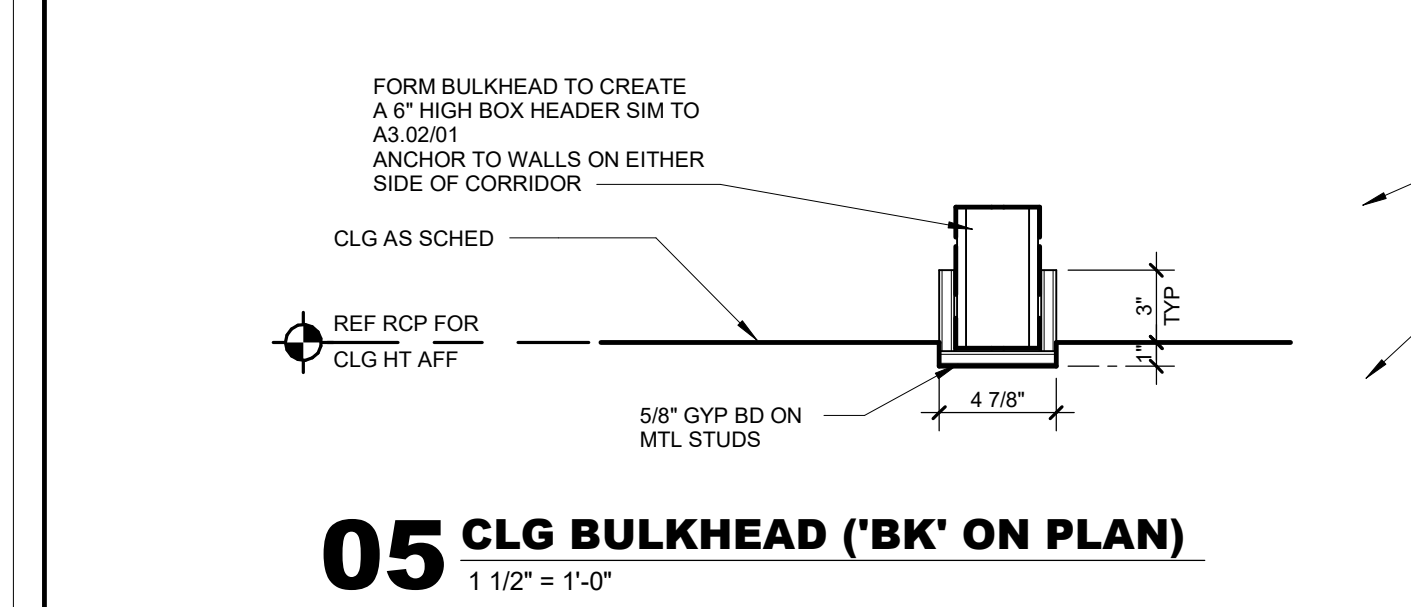
01 LEVEL 1 REMODEL PLAN
1/4" = 1'-0"



06 FLOOR SINK
1" = 1'-0"



02 LEVEL 1 REFLECTED CEILING PLAN
1/8" = 1'-0"



05 CLG BULKHEAD ('BK' ON PLAN)
1 1/2" = 1'-0"

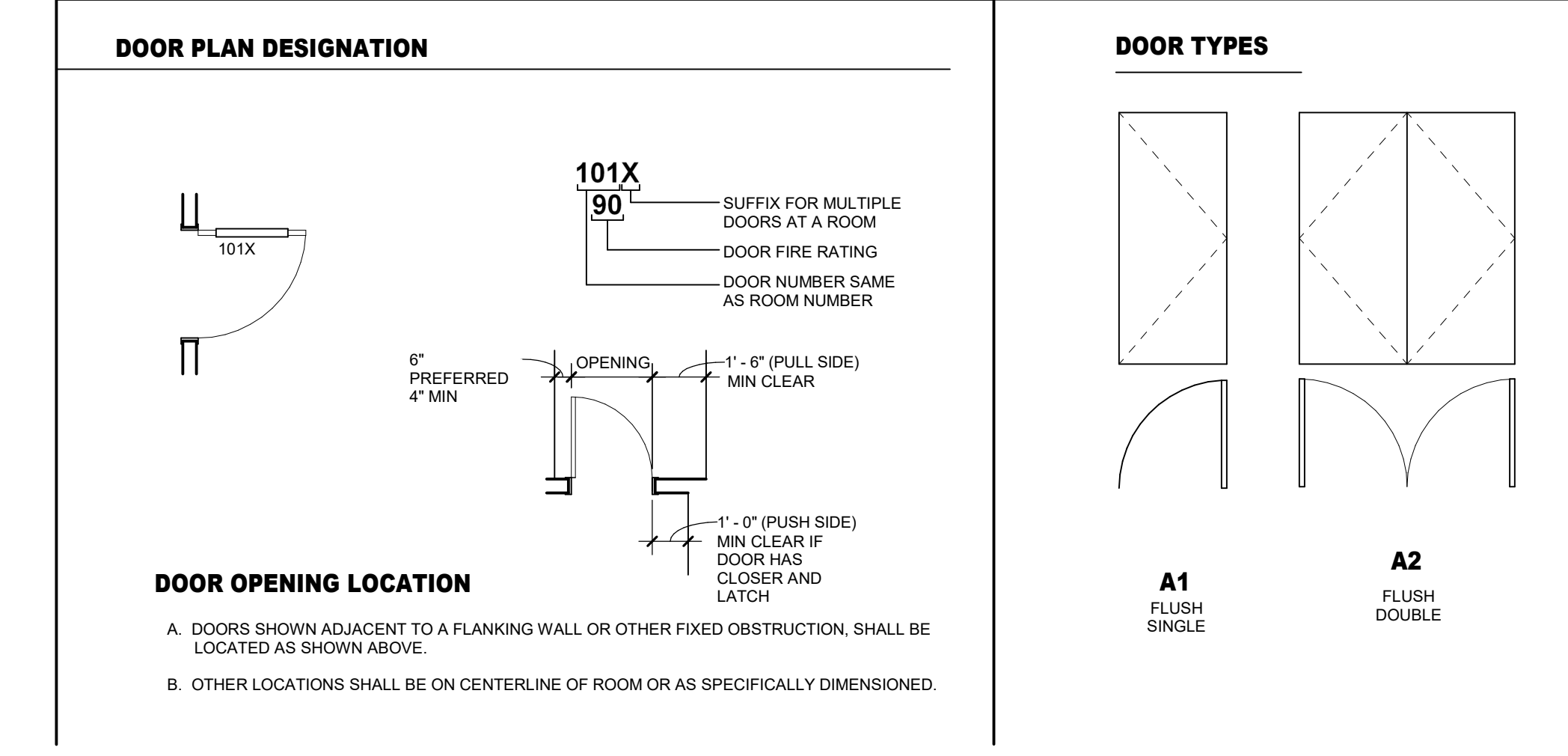
CEILING SYMBOL LEGEND

	GYPSUM BOARD CEILING		CONTROL JOINTS
	ACOJ PANEL CEILING		EXIT SIGN - HATCH INDICATES EXIT TEXT & ARROW INDICATES DIRECTION
	SUPPLY AIR		FIRE ALARM / STROBE
	RETURN AIR		SPEAKER
	EXHAUST AIR		WALL WASHER
	ACCESS PANEL		PENDANT TYPE LIGHT FIXTURE
	CEILING GRID LIGHT		WALL MOUNTED LIGHT FIXTURE
	SUSPENDED LIGHT		DOWNLIGHT
	SUSPENDED LIGHT		STRIP LIGHT

REFLECTED CEILING NOTES

- CEILING ARE AT HEIGHT AFF NOTED, UNLESS INDICATED OTHERWISE. 'ELC' INDICATES EXISTING CEILING WHICH ARE TO REMAIN.
- 36" x 36" CEILING BULKHEAD. SEE A2.0106 FOR DESCRIPTION OF CONSTRUCTION.
- CEILING PANELS SHALL BE ACP-01 UNLESS NOTED OTHERWISE.

DOOR LEGEND



DOOR SCHEDULE

DOOR NUMBER	WIDTH	HEIGHT	DOOR TYPE	FRAME TYPE	MATERIALS AND FINISHES		DETAILS			HARDWARE	COMMENTS
					DOOR MATERIAL	FRAME MATERIAL	DOOR RATING	HEAD	LAMB		
1002	9'-0"	7'-0"	A2	1	WOOD / PLAM	HOLLOW METAL	-	A2.0103	A2.0104	-	-
1004	4'-0"	7'-0"	A1	1	WOOD / PLAM	HOLLOW METAL	45	A2.0103	A2.0104	-	-
1008	4'-0"	7'-0"	A1	1	MFG	MFG	-	MFG	MFG	-	RF SHIELDED DOOR / FRAME
1008A	8'-0"	7'-0"	A2	1	WOOD / PLAM	HOLLOW METAL	-	A2.0103	A2.0104	-	-
1008B	3'-0"	7'-0"	A1	1	WOOD / PLAM	HOLLOW METAL	-	-	-	-	-
1008C	3'-0"	7'-0"	A1	1	WOOD / PLAM	HOLLOW METAL	-	-	-	-	-
1008D	4'-0"	7'-0"	A1	1	WOOD / PLAM	HOLLOW METAL	-	-	-	-	-
1008E	3'-0"	7'-0"	A1	1	WOOD / PLAM	HOLLOW METAL	-	-	-	-	-
1008F	3'-0"	7'-0"	A1	1	WOOD / PLAM	HOLLOW METAL	-	-	-	-	-
1010	3'-0"	7'-0"	A1	1	WOOD / PLAM	HOLLOW METAL	45	A2.0103	A2.0104	-	-
1012	4'-0"	7'-0"	A1	1	WOOD / PLAM	HOLLOW METAL	-	A2.0103	A2.0104	-	-
1014	3'-0"	7'-0"	A1	1	WOOD / PLAM	HOLLOW METAL	45	A2.0103	A2.0104	-	-
1016	3'-0"	7'-0"	A1	1	WOOD / PLAM	HOLLOW METAL	45	A2.0103	A2.0104	-	-

HARDWARE SCHEDULE

GROUP 01, DOOR 1004
CONTINUOUS HINGE, AUTO DOOR OPERATOR, STOREROOM LOCKSET, ELECTRIC STRIKE, CARD READER, CLOSER / STOP, SMOKE SEALS, KICKPLATE
FUNCTION: CARD READER RELEASES ELECTRIC STRIKE AND ACTIVATES AUTO DOOR OPERATOR FROM OUTSIDE
WAVE DOOR OPERATOR ON INSIDE SIDE RELEASES ELECTRIC STRIKE AND ACTIVATES AUTO DOOR OPERATOR

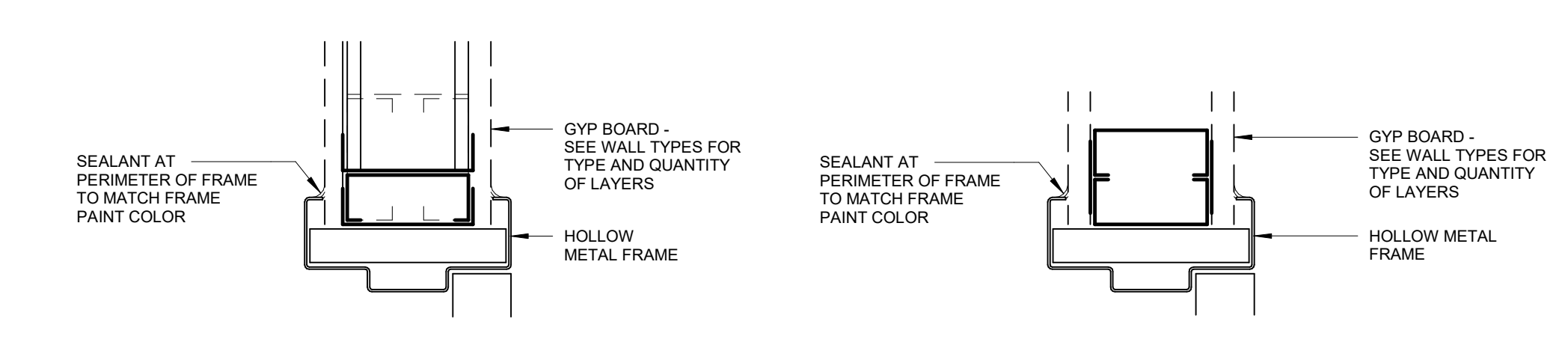
GROUP 02, DOOR 1008
HARDWARE BY RF SHIELDING SUPPLIER
DOOR IS MANUAL OPERATION
PROVIDE CARD READER ACCESS FUNCTION INTERFACE

GROUP 03, DOOR 1002
HINGES, KEYPAD COMBINATION ELECTRONIC LOCKSET, AUTO FLUSHBOLT, WALL STOP, SILENCERS, KICKPLATES (WALL FIRE RATING RUNS BEHIND ALCOVE)

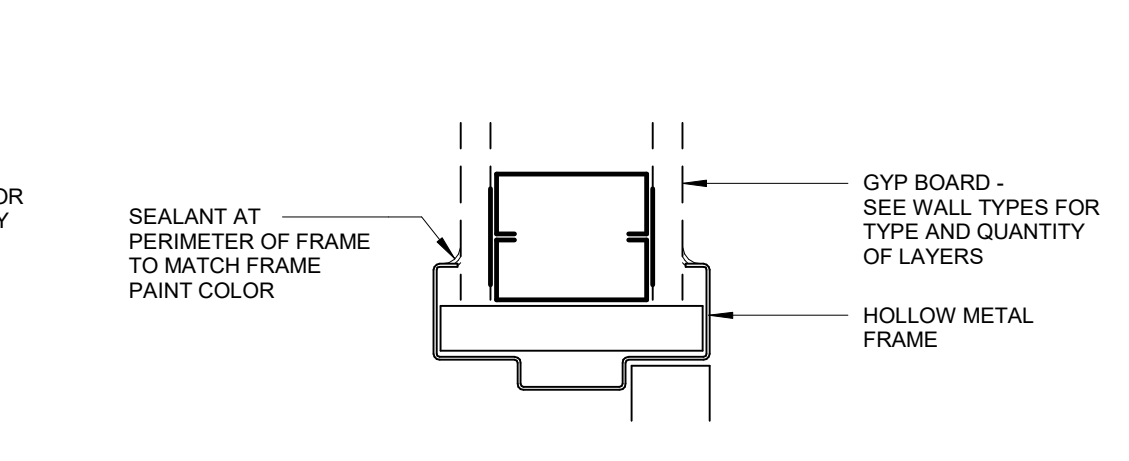
GROUP 04, DOOR 1008A
HINGES, STOREROOM LOCKSET, MANUAL FLUSHBOLT, WALL STOP

GROUP 05, DOORS 1014, 1016
HINGES, PRIVACY LOCKSET W/ OCCUPIED INDICATOR, CLOSER, WALL STOP, SMOKE SEAL, KICKPLATE

HARDWARE DESIGN INTENT:
INTENT IS TO PROVIDE HARDWARE THAT IS THE SAME MFG / MODEL AS THE EXISTING ADJACENT HARDWARE



03 INTERIOR DOOR HEAD DETAIL - HOLLOW METAL
3" = 1'-0"



04 INTERIOR DOOR JAMB DETAIL - HOLLOW METAL
3" = 1'-0"