



ARCHITECT'S SUPPLEMENTAL INSTRUCTIONS

Date Issued:	May 5, 2020
Project:	Intermountain Healthcare Tooele Valley Dialysis Clinic Expansion 2356 North 400 East, Suite #102 Tooele, Utah 84074
Architect's Supplemental Instructions:	ASI #5
To:	Saunders Construction 1113 South 500 West Bountiful, Utah 84010

The Work shall be revised in accordance with the following supplemental instructions and shall be carried out in accordance with the Contract Documents. Prior to proceeding with the work described, the Contractor is to determine if the work is to affect the contract amount. If additional costs are to be incurred, the Contractor shall submit an itemized cost breakdown showing time, material and other items affected by the change. After acceptance of this work and associated costs, a change order will be prepared for signatures to affect a change to the contract.

Item Number	Description
1	Please see attached Electrical ASI #5 from Spectrum Engineer prepared in coordination with Owner for circuiting update at TDR Room.

Attachments:

ASI #5 Memo from Spectrum Engineers
 Revised sheet EE601, EP101.



SPECTRUM
ENGINEERS

Electrical ASI #05

Project: Dialysis Clinic Expansion

From: Peter Johansen

Project No: 20190957

Date: May 05, 2020

DISCIPLINES

Mechanical Engineering
Electrical Engineering
Technology Design
Acoustical Engineering
Lighting Design
Theatre Design
Fire Protection Engineering
Building Commissioning

DRAWINGS

EE601 / EP101

1. Updated circuiting details for TDR A126.

CENTERS OF ENGINEERING EXCELLENCE

Healthcare
Higher Education
K-12 Education
Government
Houses of Worship
Special Projects

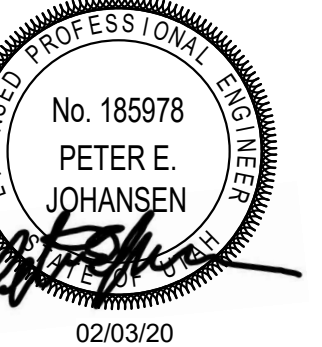
SALT LAKE CITY

324 S. State Street
Suite 400
Salt Lake City, UT 84111
phone: 801-328-5151
fax: 801-328-5155

PHOENIX

1501 W. Fountainhead Parkway
Suite 340
Tempe, AZ 85282
phone: 480-621-3444
fax: 480-621-3445

www.spectrum-engineers.com
800-678-7077

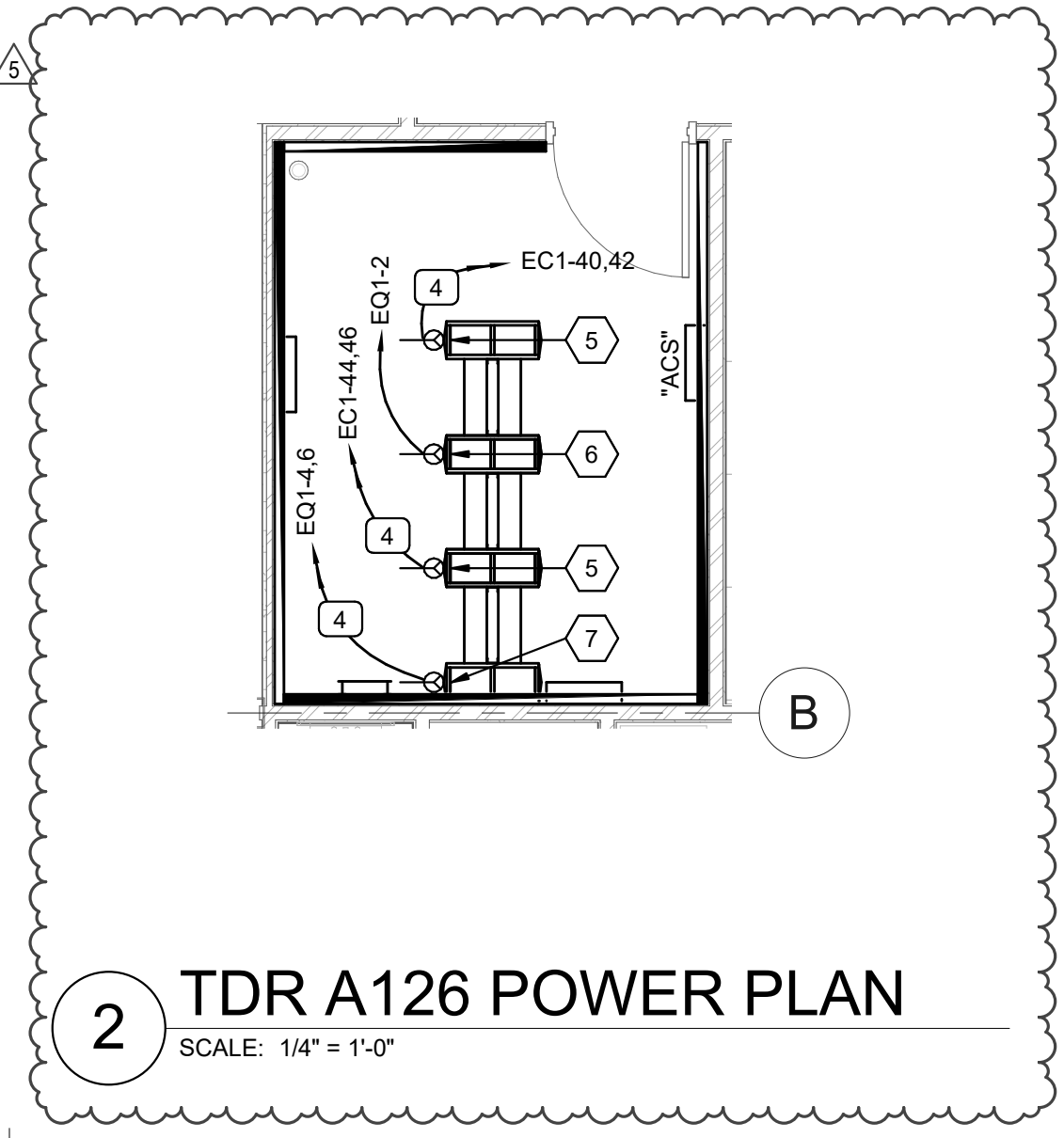
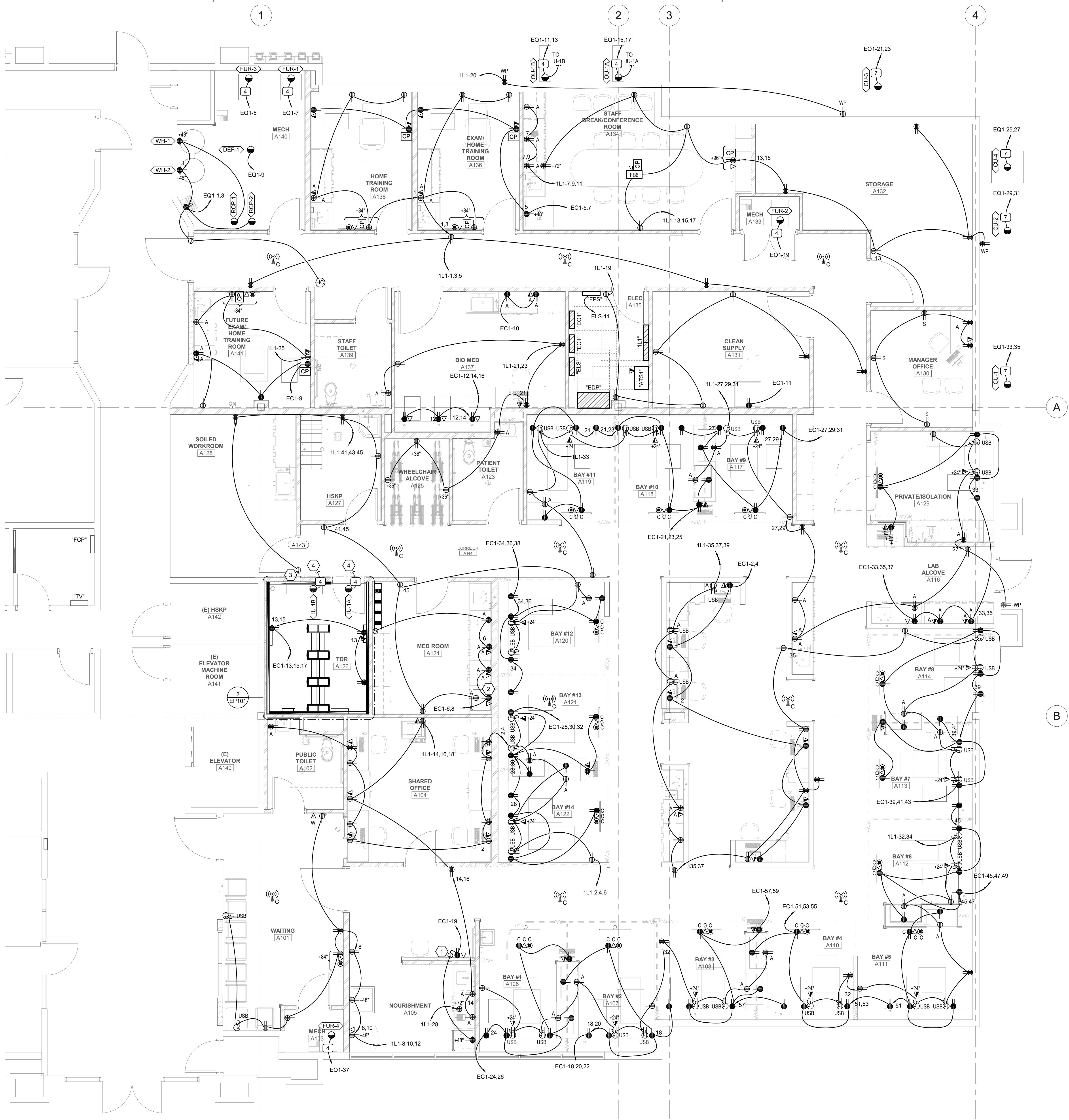


GENERAL SHEET NOTES

1 GROUNDING FOR ALL CIRCUITS TO MEET NEC 517-13 (a) & (b) REQUIREMENTS.

SHEET KEYNOTES

- 1 RUN .75" CONDUIT FROM IN-FLOOR SCALE TO MONITOR RECESSED IN WALL.
- 2 POWER AND DATA FOR U/C FRIDGE. FRIDGE WILL HAVE TEMP TRACKING.
- 3 PROVIDE 120 VOLT POWER TO SAFE-ZONE CLOSER.
- 4 CIRCUIT WITH OUT DOOR SPLIT SYSTEM UNIT.
- 5 L6/30 RECEPTACLE MOUNTED AT 76".
- 6 L5/20R RECEPTACLE MOUNTED AT 76".
- 7 L14/30 RECEPTACLE MOUNTED AT 71" AFF TO BOTTOM OF BOX.



1 POWER PLAN LEVEL 1
SCALE: 1/4" = 1'-0"

2 TDR A126 POWER PLAN
SCALE: 1/4" = 1'-0"

Intermountain Healthcare

Tooele Valley Dialysis Clinic Expansion

Northpointe Medical Park, Bldg B
2356 North 400 East, Suite # 102
Tooele, Utah 84074

NJRA Project # 19230.00
Construction Documents Feb 03, 2020
2 ASI #01 03/02/20
5 ASI #05 05/05/20

POWER PLAN LEVEL 1

EP101

C:\Users\baoo\Documents\20190957 ELEC CENTRAL_boc45407.rvt