



# ARCHITECT'S SUPPLEMENTAL INSTRUCTIONS

Date Issued:	May 19, 2020
Project:	Intermountain Healthcare <b>Tooele Valley Dialysis Clinic Expansion</b> 2356 North 400 East, Suite #102 Tooele, Utah 84074
Architect's Supplemental Instructions:	<b>ASI #6</b>
To:	Saunders Construction 1113 South 500 West Bountiful, Utah 84010

The Work shall be revised in accordance with the following supplemental instructions, and shall be carried out in accordance with the Contract Documents. Prior to proceeding with the work described, the Contractor is to determine if the work is to affect the contract amount. If additional costs are to be incurred, the Contractor shall submit an itemized cost breakdown showing time, material and other items affected by the change. After acceptance of this work and associated costs, a change order will be prepared for signatures to affect a change to the contract.

Item Number	Description
1	As requested by the Owner main entrance door A101A has been moved west and merged with the new hollow metal window W1 shown in the plan. See attached revised sheets with revisions shown clouded for more information on this change.
2	As notified by the contractor through RFI #01- some existing waste lines from upper floor were found to be located inside the demolished walls. These needed to be re-routed in coordination with the new layout of the suite at level 1. See attached revised plumbing & architectural sheets with revisions shown clouded for more information.
3	See attached Mechanical & Plumbing ASI #6 from VBFA Engineers.

**Attachments:**

ASI #6 Coversheet from VBFA,  
 Drawings: Revised sheets A110, A113, A114, A252, A601A, MH101, PD101, PP100 & PP101.



Corporate Office  
Salt Lake City  
181 E. 5600 S. Suite 130  
Murray, UT 84107  
T 801 530 3148  
F 801 530 3150

## MEMORANDUM

**DATE:** May 14, 2020

**TO:** Sourabh Sinha, LEED AP  
NJRA Architects, Inc.

**FROM:** Dallen Romriell, P.E.

**PROJECT NO.** 19605

**PROJECT:** Intermountain Healthcare Tooele Dialysis Clinic

**RE:** ASI-006 – Existing Waste Drops from Level 2

St. George  
230 N. 1680 E.  
Building V  
St. George, UT 84770  
T 435 674 4800  
F 435 674 2708

Logan  
40 W. Cache Valley Blvd.  
Building 1, Suite B  
Logan, UT 84341  
T 435 752 5081  
F 435 752 0335

Arizona  
1602 S. Priest Drive  
Suite #103  
Tempe, AZ 85281  
T 480 889 5075  
F 480 889 5076

---

ASI-006 adds clarification to the contract documents due to unforeseen existing conditions. The ASI adds in existing drops that were either not shown on the drawings or were not shown in the correct location on the existing drawings

### SHEET - MH101 – LEVEL 1 MECHANICAL PLAN

1. Offset on south duct off of FUR-2 removed.

### SHEET - PD101 – LEVEL 1 PLUMBING DEMOLITION PLAN

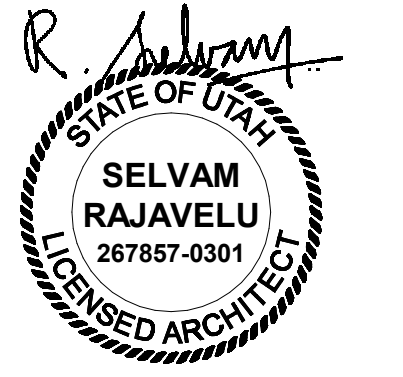
1. Keyed note 7 added.
2. Keyed note 8 added.

### SHEET - PP100 – BELOW GRADE PLUMBING PLAN

1. Existing drops not shown on existing drawings added.
2. New drops and routing to existing drops added.
3. Keyed note 4 added.
4. Keyed note 5 added.
5. Keyed note 6 added.

### SHEET - PP101 – LEVEL PLUMBING PLAN

1. Keyed note 19 added.
2. Keyed note 20 added.

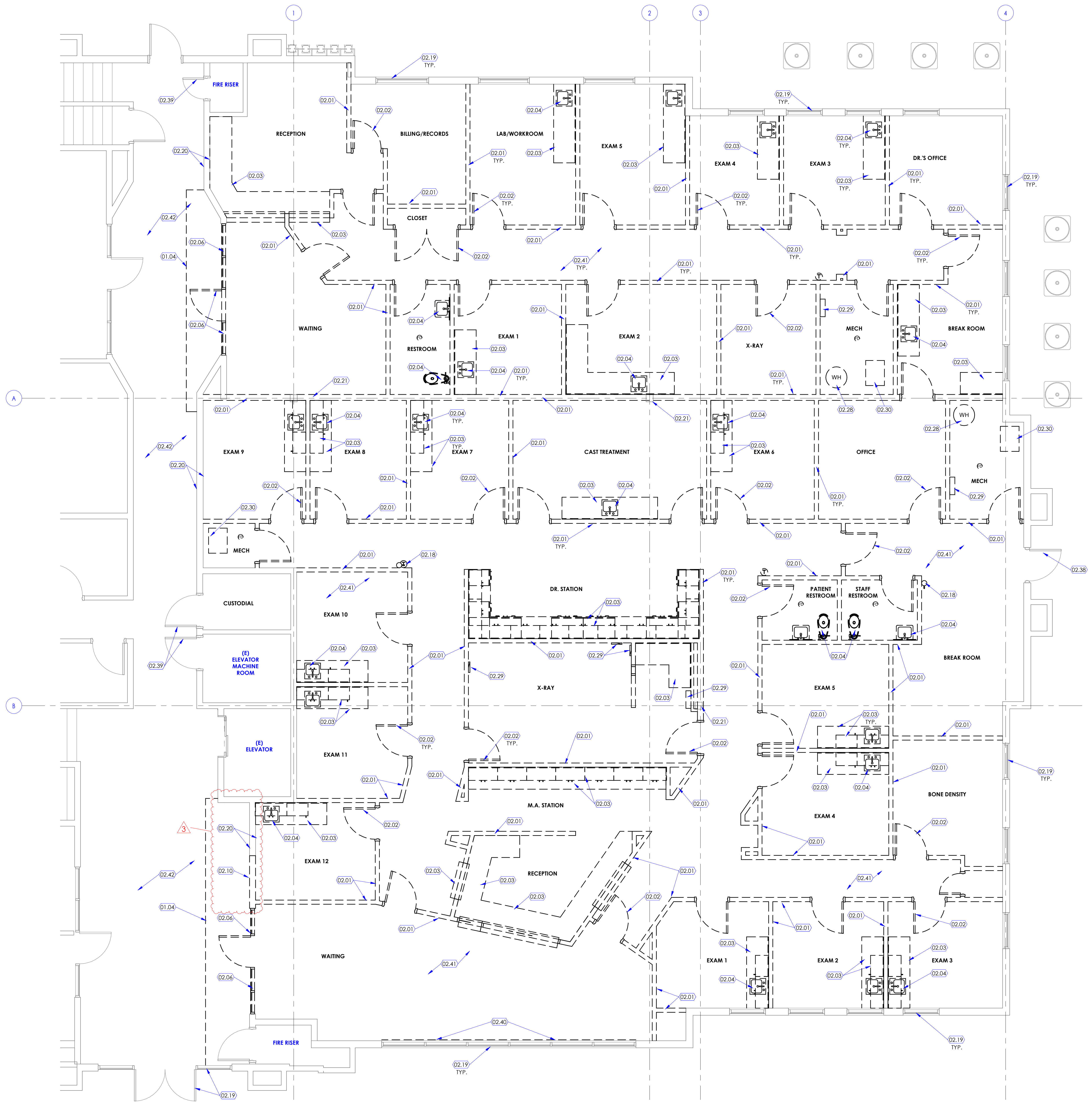


**KEYED NOTES**

- 01.04 DASHED LINE INDICATES FLOOR TO CEILING FIRE RETARDANT VISQUEEN BARRIER (10 MILS MINIMUM THICKNESS) TO PREVENT DUST AND DIRT MIGRATION AND TO SEPARATE AREAS OCCUPIED BY THE OWNER FROM FUMES AND NOISE. ALL AREAS AROUND VISQUEEN BARRIER TO BE COMPLETELY SEALED INCLUDING ANY AND ALL PENETRATIONS THROUGH BARRIER.
- 02.01 REMOVE EXISTING WOOD STUD FRAMED WALL SHOWN DASHED INCLUDING STUDS, GYPSUM BOARD, STUD BRACING ABOVE CEILING, ELECTRICAL, MECHANICAL, AND PLUMBING ITEMS LOCATED IN THE WALL.
- 02.02 REMOVE EXISTING DOOR, HARDWARE AND FRAME.
- 02.03 REMOVE EXISTING MILLWORK INCLUDING BASE CABINETS, UPPER/WALL CABINETS, FULL HEIGHT CABINETS, COUNTERTOPS, CLOSER PANEL, SLOPED DUST TOP, ETC.
- 02.04 REMOVE EXISTING PLUMBING FIXTURES, PIPING AND ACCESSORIES. SEE PLUMBING DRAWINGS FOR ADDITIONAL INFORMATION.
- 02.06 REMOVE EXISTING ALUMINUM STOREFRONT SYSTEM, GLASS AND ASSOCIATED HARDWARE.
- 02.10 REMOVE PORTION OF WALL FOR NEW DOOR OPENING. SEE KEYED NOTES 2.01 FOR WALL DEMOLITION. VERIFY ROUGH OPENING NEEDED FROM DOOR SCHEDULE.
- 02.18 REMOVE EXISTING WALL MOUNTED FIRE EXTINGUISHER AND RETURN TO OWNER.
- 02.19 EXISTING EXTERIOR ALUMINUM WINDOW AND STOREFRONT SYSTEM TO REMAIN. PROTECT DURING CONSTRUCTION. REMOVE EXISTING WINDOW BLINDS, TYPICAL.
- 02.20 REMOVE GYPSUM BOARD FROM EACH SIDE OF THE EXISTING WOOD STUD FRAMED WALL AND REPLACE WITH TYPE-X GYPSUM BOARD SHEATHING AND EXTEND WALL TO FLOOR DECK ABOVE TO ACHIEVE 1-HR FIRE RATING. SEE FLOOR PLAN FOR WALL TYPE.
- 02.21 EXISTING TUBE STEEL STRUCTURAL COLUMN TO REMAIN. PROTECT DURING CONSTRUCTION.
- 02.28 REMOVE EXISTING WATER HEATER. SEE PLUMBING DRAWINGS.
- 02.29 REMOVE COMMUNICATION PANELS. SEE ELECTRICAL DRAWINGS.
- 02.30 CAREFULLY REMOVE AND RELOCATE EXISTING FURNACE. SEE MECHANICAL DRAWINGS.
- 02.38 EXISTING ALUMINUM STOREFRONT GLAZED DOOR AND HARDWARE TO REMAIN. PROTECT DURING CONSTRUCTION.
- 02.39 EXISTING DOOR AND HARDWARE TO REMAIN. PROTECT DURING CONSTRUCTION.
- 02.40 REMOVE EXISTING WINDOW SHUTTERS.
- 02.41 REMOVE EXISTING FLOOR FINISH INCLUDING ADHESIVE DOWN TO THE BARE CONCRETE FLOOR. PREPARE FLOOR TO RECEIVE NEW FINISHES. SEE FINISH FLOOR PLAN FOR MORE INFORMATION.
- 02.42 EXISTING FLOOR FINISH TO REMAIN. PROTECT DURING CONSTRUCTION. PATCH AND REPAIR AS REQUIRED AFTER REMODEL WORK IS COMPLETED.

**GENERAL NOTES**

- A. SEE SHEET G003 AND G005 FOR SYMBOLS, GENERAL NOTES AND LEGEND.
- B. SEE SHEET A505A FOR CABINET LEGEND.
- C. SEE SHEET A601A FOR DOOR SCHEDULE AND WINDOW SCHEDULE.
- E. SEE SHEET A602A FOR FINISH SCHEDULE AND GENERAL NOTES.



Intermountain Healthcare

**Tooele Valley Dialysis Clinic Expansion**

Northpointe Medical Park, Bldg B  
2356 North 400 East, Suite # 102  
Tooele, Utah 84074

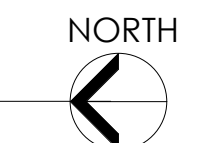
NJRA Project # 19230.00  
Construction Documents Feb 4, 2020  
2 ASI #1 Mar 5, 2020  
3 ASI #6 May 14, 2020

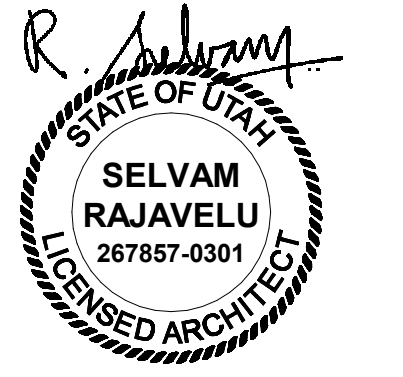
Demolition  
Floor Plan  
Level 1

**A110**

5/14/2020 3:42:04 PM

**1 Demolition Floor Plan Level 1**  
SCALE: 1/4" = 1'-0"





**KEYED NOTES**

- 01.08 CLEAN GOWN STORAGE.
- 01.14 DASHED LINE INDICATES AREA OF FUTURE TRAINING ROOM A141 TO BE BID UNDER BID ALTERNATE #1. THE ROOM SHALL HAVE WALLS AND DOOR IN BASE BID ALONG WITH PLUMBING PIPING, HVAC ITEMS NOTED IN CONSTRUCTION DOCUMENTS, NEW FINISHES, CEILING, MILLWORK, LIGHTING, PLUMBING FIXTURE ETC. TO BE BID UNDER ALTERNATE #1.
- 01.16 SOILED GOWN STORAGE.
- 02.24 UPGRADE EXISTING WALL TO TYPE-G BY REPLACING GYPSUM BOARD TO TYPE-K GYPSUM AND EXTENDING WALL TO DECK ABOVE FOR A ONE-HR FIRE RATING.
- 02.26 EXISTING FIRE RATED DOOR AND HARDWARE TO REMAIN. PROTECT DURING CONSTRUCTION.
- 02.39 EXISTING DOOR AND HARDWARE TO REMAIN. PROTECT DURING CONSTRUCTION.
- 06.01 NEW CASEWORK. SEE INTERIOR ELEVATIONS AND FINISH PLANS.
- 06.01 PLUMBING CHASE WALL. SEE INTERIOR ELEVATIONS AND DETAILS ON SHEET A505. ALSO SEE ELECTRICAL AND PLUMBING DRAWINGS.
- 06.21 SOLID SURFACE INTEGRAL SINK. BASIS OF DESIGN: SAMSUNG STARON A1181 SINK, COLOR 'BRIGHT WHITE' BW010. ALSO SEE PLUMBING DRAWINGS.
- 08.01 NEW DOOR. SEE DOOR SCHEDULE FOR MORE INFORMATION. WOOD DOOR AT THE BUILDING HALLWAY SHALL MATCH COLOR AND FINISH OF THE ADJACENT EXISTING WOOD DOORS IN THE HALLWAY. WOOD DOORS INSIDE THE REMODEL SUITE SHALL BE CLEAR MAPLE FINISH.
- 08.03 CARD ACCESS, TYPICAL. SEE ELECTRICAL DRAWINGS.
- 08.04 CARD ACCESS AND AUTOMATED DOOR OPENER. SEE ELECTRICAL DRAWINGS.
- 08.05 PUSH PAD FOR AUTO DOOR ACTIVATION. SEE ELECTRICAL DRAWINGS.
- 08.07 OVERHEAD CONCEALED FULL BREAKOUT TRACKLESS UL 1784 SMOKE RATED NARROW SILE SINGLE SLIDE ALUMINUM AND GLASS DOOR. BASIS OF DESIGN: ASSA ABLOY VERSAMAX ICL1 DOOR SYSTEM. GLAZING TO BE 1/4" CLEAR TEMPERED. SEE DETAIL 8/A601A & 10/A601A.
- 08.08 EXISTING EXTERIOR WINDOWS TO REMAIN. PROTECT DURING CONSTRUCTION. ALUMINUM AND GLASS MANUAL SLIDING WINDOW. BASIS OF DESIGN: C. R. LAURENCE DW 4000 A. TWO PANEL MANUAL DELUXE LOCKABLE SLIDING WINDOW. FINISH: SATIN ANODIZED. SEE SHEET A601A.
- 08.10 EXISTING WINDOW. SEE SCHEDULE. HM WINDOW FRAME AND GLAZING TO BE 1-HR FIRE RATED.
- 09.04 PARTIAL HEIGHT WALL WITH SOLID SURFACE CAP. SEE WALL TYPE 'P' ON SHEET A501.
- 09.08 3/4" THICK FIRE TREATED PLYWOOD FROM TOP OF BASE TO 7'-0" ABOVE BASE-ALL WALLS. TYPICAL. PAINT PLYWOOD TO MATCH WALL COLOR.
- 09.27 PROVIDE SOLID SURFACE WINDOW SILL AT ALL EXTERIOR WINDOWS TYPICAL. SEE FINISH SCHEDULE AND DETAIL S/A602A.
- 10.06 GRAB BARS. SEE SPECIFICATIONS. PROVIDE TYPE 1 METAL STUD BACKING PER DETAIL S/A502A. SEE SHEET G003 FOR MOUNTING HEIGHTS.
- 10.11 METAL LOCKERS. 15" W X 18" D X 2" THICK. 10 LOCKERS. SEE SPECIFICATIONS. SEE DETAIL 6/A506A FOR LOCKER BASE DETAIL.
- 10.18 COFFEE POT, OFCI. SEE ELECTRICAL DRAWINGS.
- 10.19 REFRIGERATOR, OFCI. SEE ELECTRICAL DRAWINGS.
- 11.02 NURSE CHARTING STATION. SEE DETAIL 1/A504A. ALSO SEE DETAIL 13/A502A FOR BACKING REQUIREMENTS. SEE ELECTRICAL DRAWINGS FOR POWER AND DATA.
- 11.03 PATIENT CHAIR/ RECLINER, OFCI.
- 11.05 METAL SHELVING, OFCI.
- 11.06 WALL MOUNTED MONITOR OFCI. SEE ELECTRICAL DRAWINGS. PROVIDE 3'-0" W X 2'-0" H X 18 GA SHEET METAL BACKING.
- 11.07 DIALYSIS HOSE AND SUPPLY BOX. SEE PLUMBING DRAWINGS. VERIFY LOCATION AND HEIGHT WITH OWNER BEFORE INSTALLATION.
- 11.08 TABLE HEMODIALYSIS SYSTEM. PROVIDED AND INSTALLED BY OWNERS VENDOR.
- 11.12 VENDING MACHINE, OFCI. SEE ELECTRICAL DRAWINGS.
- 11.13 ICE AND WATER DISPENSER ON STAND, OFCI. SEE PLUMBING DRAWINGS.
- 11.14 FLUSH MOUNTED IN-FLOOR SCALE, OFCI. CONCRETE FLOOR TO HAVE A 3" RECESS FOR IN-FLOOR SCALE. RECESS TO BE 3'-0" W X 3'-4" D. PROVIDE 10" MINIMUM CLEARANCE FROM BACK WALL AND 6" MINIM CLEARANCE FROM SIDE WALL AS SHOWN. ALSO PROVIDE 3" RECESS FOR CONDUIT CENTERED ON THE RECESSED SLAB IN-FLOOR SCALE. FROM THE FLOOR SCALE TO WALL BEHIND. COORDINATE WITH IN-FLOOR SCALE MANUFACTURER. SEE DETAIL 2/A504A. POUR NEW THICKENED SLAB AFTER REMOVAL OF CONCRETE.
- 11.15 HIGH DENSITY WIRE SHELVING, OFCI.
- 11.16 FLOOR MOUNTED BLANKET WARMER, OFCI. SEE ELECTRICAL DRAWINGS FOR POWER REQUIREMENTS.
- 11.17 LINEN CART, OFCI.
- 11.18 EXAM TABLE, OFCI. SEE ELECTRICAL DRAWINGS FOR POWER REQUIREMENTS.
- 12.01 FURNITURE. TO BE PROVIDED AND INSTALLED BY OWNERS VENDOR (MIDWEST COMMERCIAL INTERIORS - MWCI).
- 12.02 PRIVACY CURTAIN AND TRACK. SEE FINISH SCHEDULE AND PROJECT MANUAL. SEE DETAIL 13/A503A.
- 12.03 PROVIDE AND INSTALL 1" ALUMINUM BLINDS AT ALL EXTERIOR WINDOWS. TYPICAL THROUGHOUT THE PROJECT. FIELD VERIFY WINDOW SIZE BEFORE INSTALLATION.
- 22.01 FLOOR MOUNTED WATER CLOSET. SEE PLUMBING DRAWINGS.
- 22.02 WALL MOUNTED HAND WASH SINK. SEE PLUMBING DRAWINGS.
- 22.03 MOP SINK. SEE PLUMBING DRAWINGS.
- 22.04 COUNTER MOUNTED STAINLESS STEEL DEEP SINK. SEE PLUMBING DRAWINGS.
- 22.05 COUNTER MOUNTED EYE WASH. SEE PLUMBING DRAWINGS.
- 26.04 WALL MOUNTED PLUG STRIP. SEE ELECTRICAL DRAWINGS.
- 26.06 DOOR RELEASE BUTTON. SEE ELECTRICAL DRAWINGS.
- 26.14 NURSE CALL WITH PULLO W/SPEAKER. SEE ELECTRICAL DRAWINGS.
- 26.16 WALL PHONE. SEE ELECTRICAL DRAWINGS.
- 26.17 FLOOR MOUNTED MULTI FUNCTION PRINTER/COPIER. SEE ELECTRICAL DRAWINGS FOR POWER AND DATA.
- 26.19 SEE ELECTRICAL DRAWINGS FOR FLOOR BOX RECESSED IN CONCRETE TO PROVIDE POWER AND DATA CONNECTION TO THE TABLE. COORDINATE WITH OWNERS VENDOR MIDWEST FURNITURE FOR LOCATION OF THE TABLE LEGS TO RUN ELECTRICAL CONNECTIONS TO THE TABLE.

**GENERAL NOTES**

- A. SEE SHEET G003 AND G005 FOR SYMBOLS, GENERAL NOTES AND LEGEND.
- B. SEE SHEET A505A FOR CABINET LEGEND.
- C. SEE SHEET A601A FOR DOOR SCHEDULE AND WINDOW SCHEDULE.
- E. SEE SHEET A602A FOR FINISH SCHEDULE AND GENERAL NOTES.

Intermountain Healthcare

Tooele Valley Dialysis Clinic Expansion

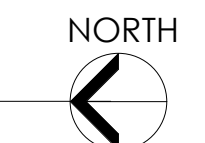
Northpointe Medical Park, Bldg B  
2356 North 400 East, Suite # 102  
Tooele, Utah 84074

Floor Plan  
Level 1

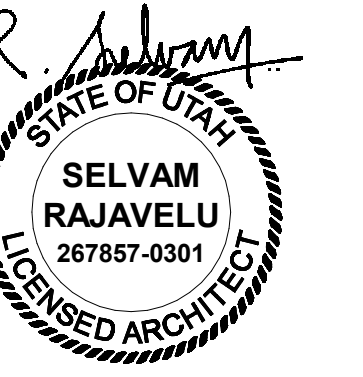
A113



1 Floor Plan Level 1  
SCALE: 1/4" = 1'-0"



5/14/2020 3:42:07 PM



**KEYED NOTES**

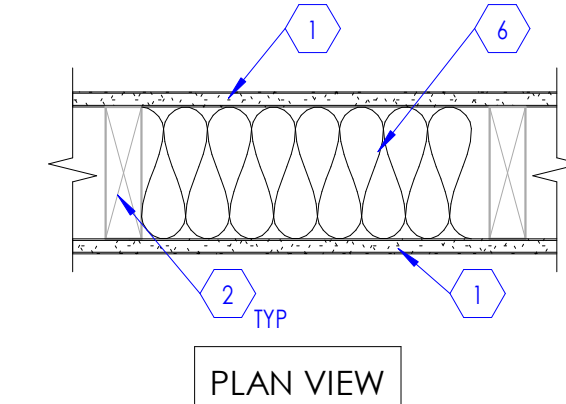
- 03.01 SAW CUT EXISTING CONCRETE SLAB ON GRADE (3/4" X 40" W) - EXTEND SAW CUT 3" WIDE TO WALL BEYOND AS SHOWN. POUR NEW 4" THICK CONCRETE SLAB ON GRADE OVER 4" DRAINAGE GRAVEL SUCH THAT THE RECESS/DEPRESSION IN THE NEW SLAB IS 3" FROM THE ADJACENT FLOOR SLAB.

**GENERAL NOTES**

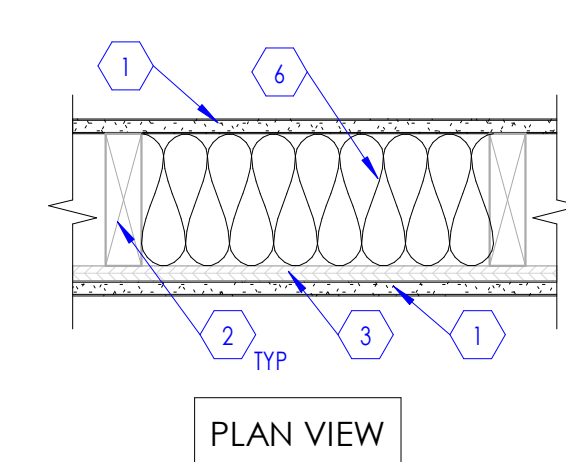
- A. SEE SHEET G003 AND G005 FOR SYMBOLS, GENERAL NOTES AND LEGEND.
- B. SEE SHEET A505A FOR CABINET LEGEND.
- C. SEE SHEET A601A FOR DOOR SCHEDULE AND WINDOW SCHEDULE.
- E. SEE SHEET A602A FOR FINISH SCHEDULE AND GENERAL NOTES.

**KEYED NOTES**

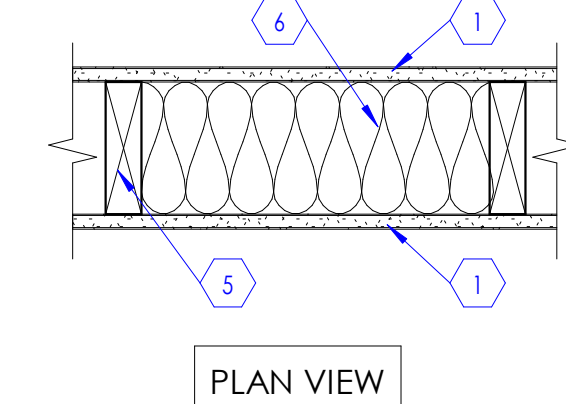
- 1. NEW 5/8" THICK TYPE 'X' GYPSUM WALL BOARD FROM FINISHED FLOOR TO DECK/STRUCTURE ABOVE.
- 2. EXISTING 2x4 WOOD STUDS @ 16" O.C.
- 3. EXISTING SHEATHING TO REMAIN.
- 4. EXISTING GYPSUM WALL BOARD.
- 5. NEW 2x6 WOOD STUDS @ 16" O.C. TO MATCH ADJACENT EXISTING.
- 6. NEW SOUND BATT INSULATION.
- 7. NEW SHEATHING. SEE STRUCTURAL DRAWINGS.



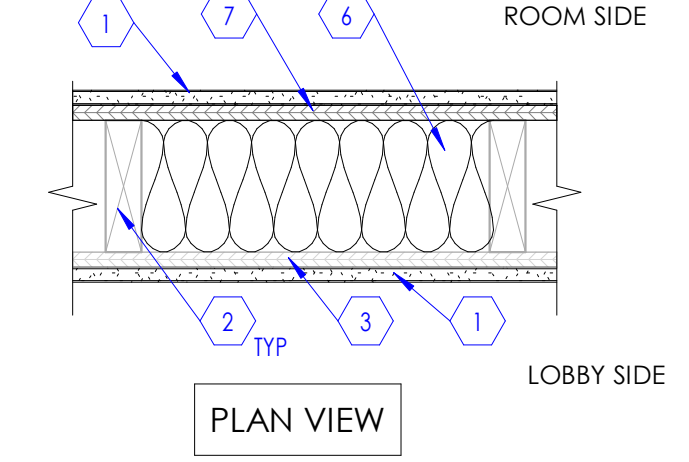
**Type - Q**  
Wood Stud Furring Wall  
UL U305 1-HOUR RATED



**Type - R**  
Wood Stud Furring Wall  
UL U305 1-HOUR RATED



**Type - S**  
Wood Stud Furring Wall  
UL U305 1-HOUR RATED

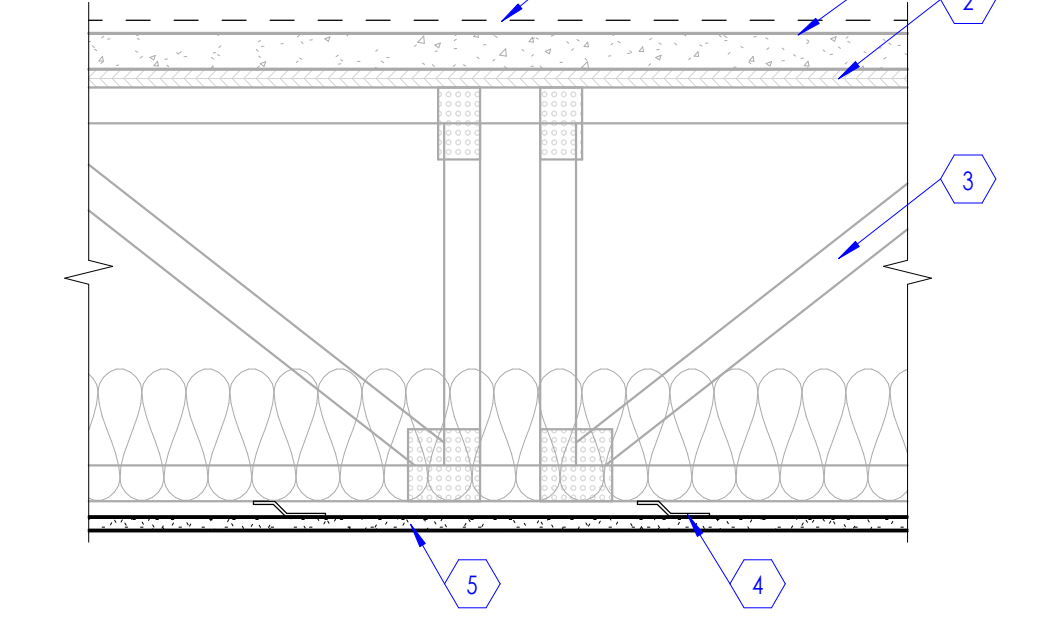


**Type - T**  
Wood Stud Furring Wall  
UL U305 1-HOUR RATED

**2 Wall Types**  
SCALE: 1 1/2" = 1'-0"

**KEYED NOTES**

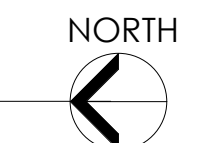
- 1. EXISTING 1 1/2" GYPCRETE TOPPING
- 2. EXISTING 3/4" PLYWOOD SHEATHING
- 3. EXISTING WOOD JOIST
- 4. NEW 25 GA. RESILIENT CHANNEL
- 5. NEW 5/8" TYPE 'X' GYPSUM
- 6. EXISTING FLOOR FINISH



**3 1-Hr. Fire Rated Floor Assembly**  
SCALE: 1 1/2" = 1'-0"  
UL L521 1-HOUR RATED  
(APPLY UNDERFLOOR JOISTS OF ENTIRE REMODEL SUITE)



**1 Dimension Floor Plan Level 1**  
SCALE: 1/4" = 1'-0"



5/14/2020 3:42:13 PM

Intermountain Healthcare

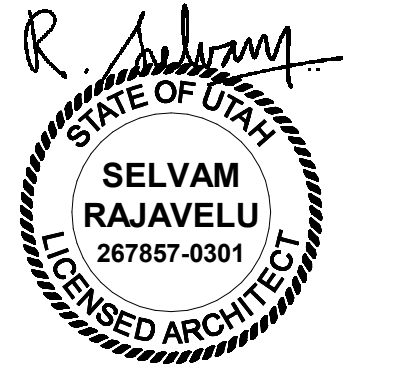
Tooele Valley Dialysis Clinic Expansion

Northpointe Medical Park, Bldg B  
2356 North 400 East, Suite # 102  
Tooele, Utah 84074

NJRA Project #	19230.00
Construction Documents	Feb 4, 2020
2 ASI #1	Mar 5, 2020
3 ASI #6	May 14, 2020

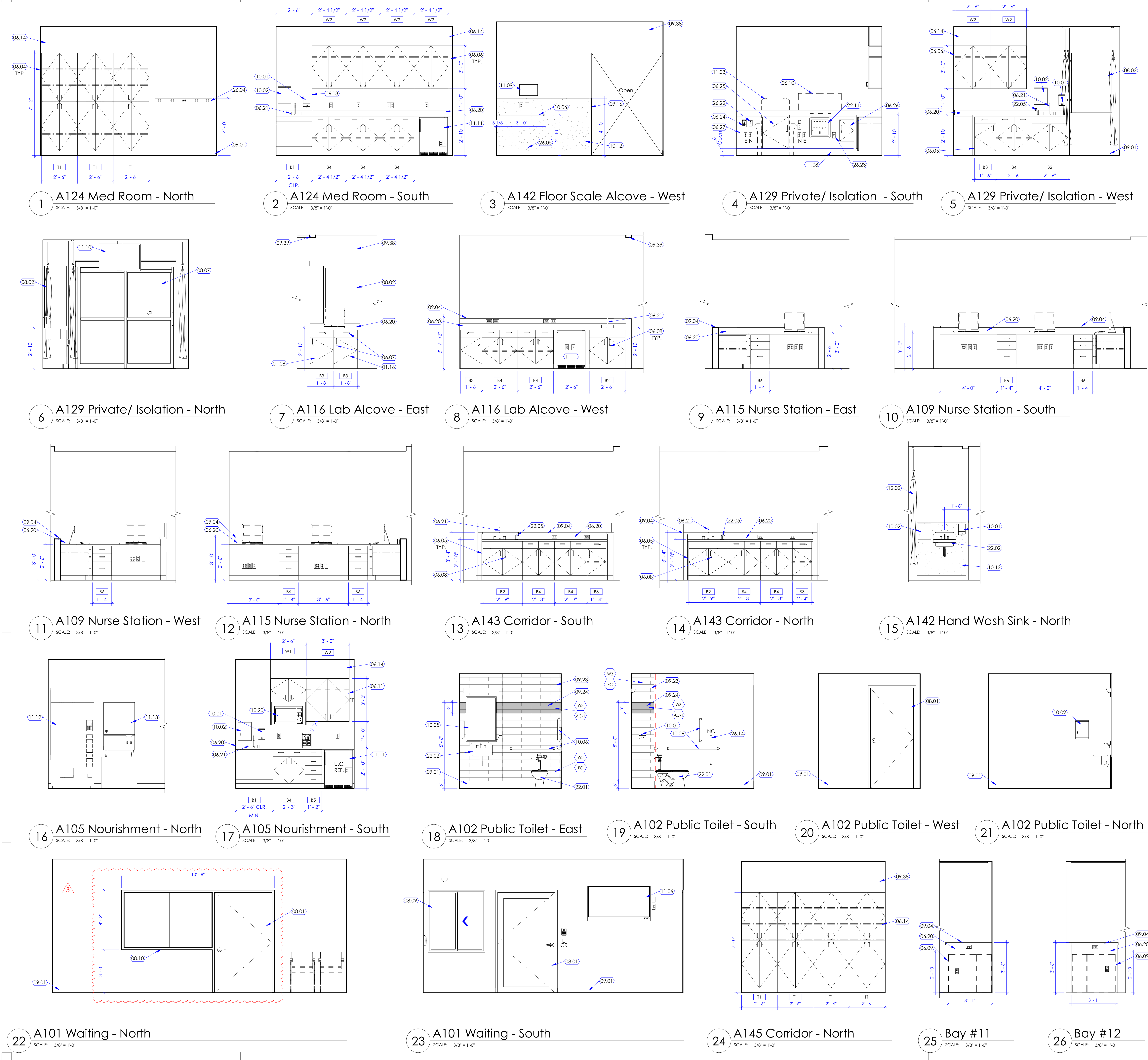
Dimension Floor Plan Level 1

**A114**



**KEYED NOTES**

- 01.08 CLEAN GOWN STORAGE.
- 01.16 SOLED DOWN STORAGE.
- 06.04 PLASTIC LAMINATE TALL CABINET FILLER PANEL AS REQUIRED. FILLER PANEL TO MATCH PROFILE AND FINISH OF ADJACENT CABINETS.
- 06.05 PLASTIC LAMINATE BASE CABINET FILLER PANEL AS REQUIRED. FILLER PANEL TO MATCH PROFILE AND FINISH OF ADJACENT CABINETS.
- 06.06 PLASTIC LAMINATE WALL CABINET FILLER PANEL AS REQUIRED. FILLER PANEL TO MATCH PROFILE AND FINISH OF ADJACENT CABINETS.
- 06.07 CABINETS TO BE LOCKABLE.
- 06.08 ALL SINK CABINETS TO BE LOCKABLE, TYPICAL.
- 06.09 PROVIDE P-LAM FINISHED PANEL AT SIDE OF CABINET.
- 06.10 30" WIDE P-LAM LIFT UP ACCESS PANEL WITH STAINLESS STEEL CONTINUOUS CONCEALED PIANO HINGE AND MOUNTING BRACKET. CENTER ACCESS PANEL ON WALL BOX BELOW.
- 06.11 P-LAM END PANEL.
- 06.13 GLASS PARTITION BETWEEN DIRTY AND CLEAN SIDE. GLASS TO BE 1/2" THICK X DEPTH OF COUNTERTOP. GLASS TO SPAN FROM TOP OF COUNTERTOP TO BOTTOM OF UPPER/WALL CABINET. PROVIDE 3" RADIUS EDGE ON THE EXPOSED EDGE. PROVIDE POLISHED EDGES AT ALL TWO EXPOSED EDGES. PROVIDE 1/2" X 1/2" X CONT. STAINLESS STEEL RECEIVING CHANNEL TO HOLD THE GLASS IN PLACE. CUT COUNTER BACKSPASH TO ANCHOR GLASS TO WALL BEHIND.
- 06.14 P-LAM CLOSER PANEL TO CEILING ABOVE. SEE DETAIL 2/A5058.
- 06.20 SOLID SURFACE COUNTER WITH FULL BULLNOSE EDGE AND INTEGRAL BACKSPASH. SEE DETAIL 5/A5058 AND 8/A5058. PROVIDE INTEGRAL SIDE SPLASH WHERE COUNTER ABUTS PERPENDICULAR WALL/CABINET.
- 06.21 SOLID SURFACE INTEGRAL SINK. BASIS OF DESIGN: SAMSUNG, STARON A181 SINK. COLOR "BRIGHT WHITE" BW010. ALSO SEE PLUMBING DRAWINGS.
- 06.24 TALL CABINET. SEE CASEWORK LEGEND.
- 06.25 P-LAM LOCKABLE ACCESS PANEL WITH STAINLESS STEEL CONTINUOUS CONCEALED PIANO HINGE AND MOUNTING BRACKET.
- 06.26 P-LAM LOCKABLE STORAGE CABINET WITH DOOR TO STORE PATIENT BELONGINGS. SEE DETAILS ON SHEET A505C.
- 06.27 BUILT IN CASEWORK FOR CHASE WALL WITH PLASTIC LAMINATE FASCIA PANEL AND MELAMINE BACK. USE MARINE GRADE PLYWOOD THROUGHOUT. SEE DETAILS ON SHEET A505C.
- 08.01 NEW DOOR. SEE DOOR SCHEDULE FOR MORE INFORMATION. WOOD DOOR AT THE BUILDING HALLWAY SHALL MATCH COLOR AND FINISH OF THE ADJACENT EXISTING WOOD DOORS IN THE HALLWAY. WOOD DOORS INSIDE THE REMODEL SUITE SHALL BE CLEAR MAPLE FINISH.
- 08.02 CORNER ALUMINUM WINDOW. BASIS OF DESIGN KAWNEER VG TRIFAB 451. SEE WINDOW SCHEDULE. GLAZING TO BE 1/4" THICK CLEAR TEMPERED.
- 08.07 OVERHEAD CONCEALED FULL BREAKOUT TRACKLESS UL 1784 SMOKE RATED NARROW STILE SINGLE SLIDE ALUMINUM AND GLASS DOOR. BASIS OF DESIGN: ASSA ALCBY VERSAMAX ICU DOOR SYSTEM. GLAZING TO BE 1/4" CLEAR TEMPERED. SEE DETAIL 8/A601A & 10/A601A.
- 08.09 ALUMINUM AND GLASS MANUAL SLIDING WINDOW. BASIS OF DESIGN C. R. LAURENCE DW 4200 A TWO PANEL MANUAL DELUXE LOCKABLE SLIDING WINDOW. FINISH SATIN ANODIZED. SEE SHEET A601A.
- 08.10 INTERIOR WINDOW. SEE SCHEDULE. HW WINDOW FRAME AND GLAZING TO BE 1-HR FIRE RATED.
- 09.01 WALL BASE. SEE FINISH SCHEDULE.
- 09.04 PARTIAL HEIGHT WALL WITH SOLID SURFACE CAP. SEE WALL TYPE 'P' ON SHEET A501.
- 09.16 CORNER GUARD. 2' X 2' X 4'-0". SEE FINISH SCHEDULE. SEE DETAIL 11/A601B. TOP OF CORNER GUARD TO ALIGN WITH TOP OF WALL PROTECTION WAINGSOT. TYP.
- 09.23 WALL FIELD TILE. SEE FINISH SCHEDULE.
- 09.24 WALL ACCENT TILE. SEE FINISH SCHEDULE.
- 09.38 GYPSUM BOARD SOFFIT. SEE DETAIL 9/A503A.
- 09.39 GYPSUM BOARD HEADER. SEE DETAIL 6/A503A.
- 10.01 SOAP DISPENSER. OFCI. SEE SHEET G004 FOR MOUNTING HEIGHT.
- 10.02 PAPER TOWEL DISPENSER. OFCI. SEE SHEET G003 FOR MOUNTING HEIGHT.
- 10.05 MIRROR. 24 INCHES WIDE X 36" HIGH. SEE SPECIFICATIONS. MOUNT MIRROR SUCH THAT THE REFLECTIVE SURFACE OF MIRROR IS NO MORE THAN 40 INCHES AFF. SEE SHEET G003 FOR MOUNTING HEIGHT.
- 10.06 GRAB BARS. SEE SPECIFICATIONS. PROVIDE TYPE 1 METAL STUD BACKING PER DETAIL 5/A502A. SEE SHEET G003 FOR MOUNTING HEIGHTS.
- 10.12 WALL PROTECTION WAINGSOT. 0.06 INCH THICK. SEE FINISH SCHEDULE. ALIGN TOP OF WAINGSOT WITH TOP OF CORNER GUARD WHERE OCCURS. SEE DETAIL 4/A602A.
- 10.20 MICROWAVE. OFCI. SEE ELECTRICAL DRAWINGS. FOR MICROWAVE IN WALL CABINET PROVIDE OUTLET IN THE CABINET ABOVE WITH A GROMMET OPENING AT THE BASE OF THIS CABINET.
- 11.03 PATIENT CHAIR/RECLINER. OFCI.
- 11.06 WALL MOUNTED MONITOR. OFCI. SEE ELECTRICAL DRAWINGS. PROVIDE 3'-0" W X 2'-0" H X 18 GA SHEET METAL BACKING.
- 11.08 TABLE HEMODIALYSIS SYSTEM. PROVIDED AND INSTALLED BY OWNERS VENDOR.
- 11.09 WALL MOUNTED READOUT PANEL FOR SCALE. O.F.C.I. SEE ELECTRICAL DRAWINGS FOR POWER AND DATA. INSTALL PER MANUFACTURERS RECOMMENDATION. CONTACT OWNER FOR MORE INFORMATION.
- 11.10 CEILING MOUNTED TV. OFCI. PROVIDE 3" STAINLESS STEEL GROMMET AT OPENING IN CEILING TILE AT ALL CEILING MOUNTED TV LOCATIONS. TYPICAL.
- 11.11 UNDERCOUNTER REFRIGERATOR. OFCI. SEE ELECTRICAL DRAWINGS FOR POWER AND DATA.
- 11.12 VENDING MACHINE. OFCI. SEE ELECTRICAL DRAWINGS.
- 11.13 ICE AND WATER DISPENSER ON STAND. OFCI. SEE PLUMBING DRAWINGS.
- 12.02 PRIVACY CURTAIN AND TRACK. SEE FINISH SCHEDULE AND PROJECT MANUAL. SEE DETAIL 13/A503A.
- 22.01 FLOOR MOUNTED WATER CLOSET. SEE PLUMBING DRAWINGS.
- 22.02 WALL MOUNTED HAND WASH SINK. SEE PLUMBING DRAWINGS.
- 22.05 COUNTER MOUNTED EYE WASH. SEE PLUMBING DRAWINGS.
- 22.11 DIALYSIS HOSE AND SUPPLY BOX. SEE PLUMBING DRAWINGS. VERIFY LOCATION AND HEIGHT WITH OWNER BEFORE INSTALLATION.
- 26.04 WALL MOUNTED PLUG STRIP. SEE ELECTRICAL DRAWINGS.
- 26.05 IN WALL CONDUIT FOR LOAD CELL CABLE. SEE MANUFACTURER AND ELECTRICAL DRAWINGS.
- 26.14 NURSE CALL WITH PILLOW SPEAKER. SEE ELECTRICAL DRAWINGS.
- 26.22 LIGHT SWITCH. SEE ELECTRICAL DRAWINGS.
- 26.23 DEDICATED OUTLET FOR DIALYSIS MACHINE. SEE ELECTRICAL DRAWINGS.



**GENERAL NOTES**

- A. SEE SHEET G003 AND G005 FOR SYMBOLS, GENERAL NOTES AND LEGEND.
- B. SEE SHEET A505A FOR CABINET LEGEND.
- C. SEE SHEET A601A FOR DOOR SCHEDULE AND WINDOW SCHEDULE.
- E. SEE SHEET A602A FOR FINISH SCHEDULE AND GENERAL NOTES.

Intermountain Healthcare

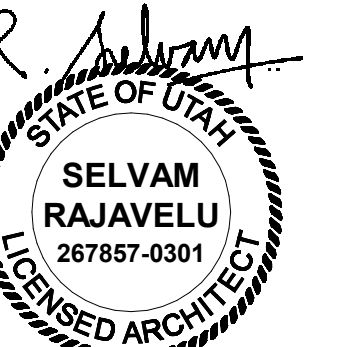
Tooele Valley Dialysis Clinic Expansion

Northpointe Medical Park, Bldg B  
2356 North 400 East, Suite # 102  
Tooele, Utah 84074

Interior Elevations

A252

5/14/2020 3:42:20 PM



**DOOR SCHEDULE**

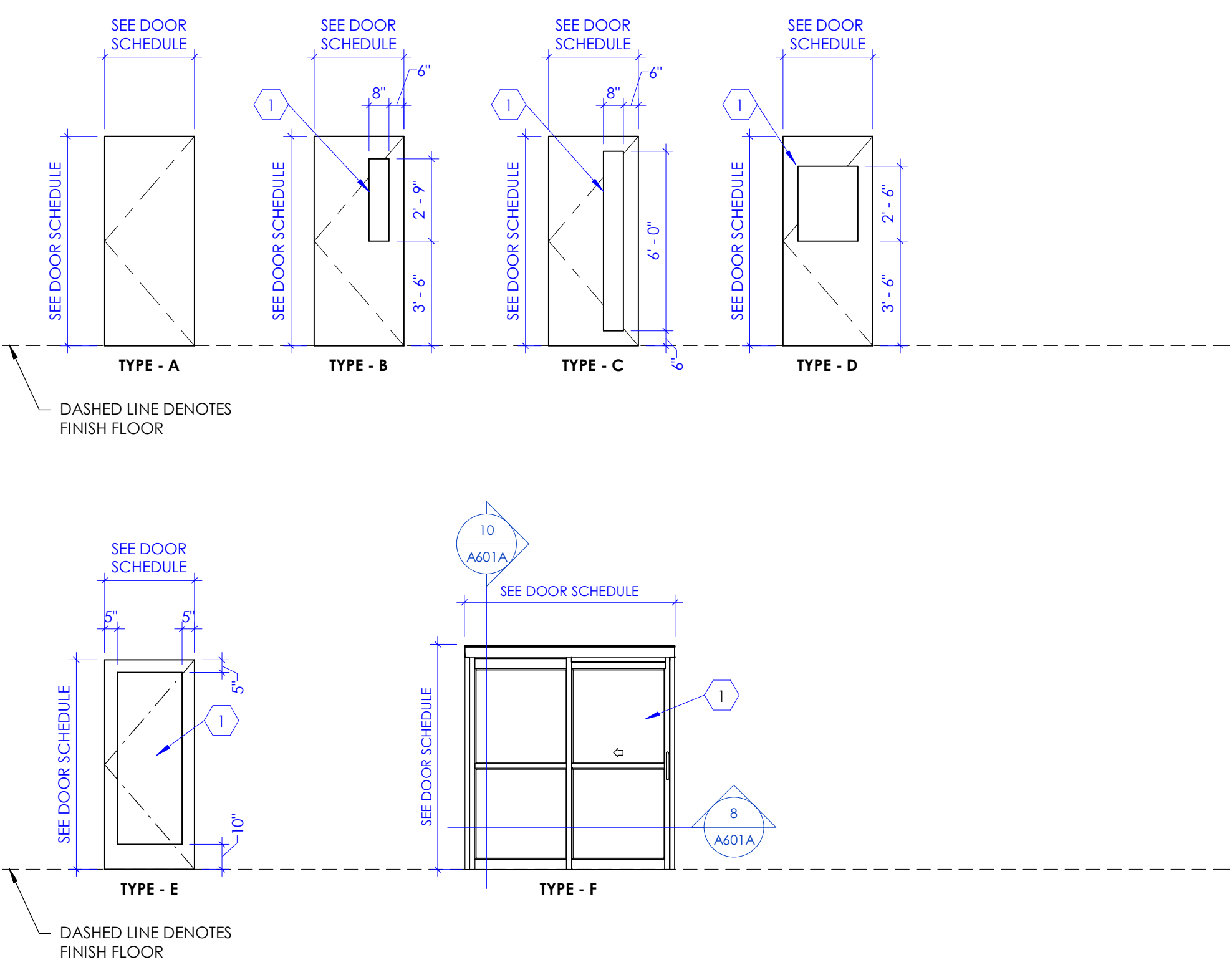
DOOR #	# OF PANELS	DOOR				FRAME			DETAILS			DOOR #	FIRE RATING (MINUTES)	HARDWARE GROUP	COMMENTS	
		W1	W2	HEIGHT	THICKNESS	MATERIAL	TYPE (1/A601A)	DEPTH	MATERIAL	JAMB	HEAD					THRESHOLD
A101A	1	4'-0"		7'-0"	1 3/4"	WD	A	7 3/4"	HM	9/A601A	9/A601A	A101A	45	1	6	
A101B	1	4'-0"		7'-0"	1 3/4"	WD	E	8 1/4"	HM	9/A601A	9/A601A	A101B		2	1,2	
A102	1	3'-0"		7'-0"	1 3/4"	WD	A	5 7/8"	HM	9/A601A	9/A601A	A102		11		
A103	1	3'-0"		7'-0"	1 3/4"	WD	A	5 7/8"	HM	9/A601A	9/A601A	A103		13		
A104	1	3'-0"		7'-0"	1 3/4"	WD	D	5 7/8"	HM	9/A601A	9/A601A	A104		10		
A123	1	3'-0"		7'-0"	1 3/4"	WD	A	5 7/8"	HM	9/A601A	9/A601A	A123		11		
A124	1	3'-0"		7'-0"	1 3/4"	WD	D	5 7/8"	HM	9/A601A	9/A601A	A124		7	1	
A126	1	3'-0"		7'-0"	1 3/4"	WD	A	5 7/8"	HM	9/A601A	9/A601A	A126		7	1	
A127	1	3'-0"		7'-0"	1 3/4"	WD	A	5 7/8"	HM	9/A601A	9/A601A	A127		9		
A128	1	3'-6"		7'-0"	1 3/4"	WD	A	5 7/8"	HM	9/A601A	9/A601A	A128		5	1,3	
A129	1	7'-0"		7'-6"	MFR.	AL	F	MFR.	AL	8/A601A	10/A601A	A129		12	5	
A130	1	3'-0"		7'-0"	1 3/4"	WD	A	5 7/8"	HM	9/A601A	9/A601A	A130		10		
A131	1	4'-0"		7'-0"	1 3/4"	HM	A	5 7/8"	HM	9/A601A	9/A601A	A131		4	1	
A132A	1	4'-0"		7'-0"	1 3/4"	HM	A	5 7/8"	HM	9/A601A	9/A601A	A132A		6		
A133	2	2'-6"		7'-0"	1 3/4"	WD	A	5 7/8"	HM	9/A601A	9/A601A	A133		8		
A134	1	3'-0"		7'-0"	1 3/4"	WD	A	5 7/8"	HM	9/A601A	9/A601A	A134		10		
A135	1	3'-0"		7'-0"	1 3/4"	WD	A	5 7/8"	HM	9/A601A	9/A601A	A135		9		
A136	1	3'-0"		7'-0"	1 3/4"	WD	A	5 7/8"	HM	9/A601A	9/A601A	A136		10		
A137	1	4'-0"		7'-0"	1 3/4"	WD	A	5 7/8"	HM	9/A601A	9/A601A	A137		4	1	
A138	1	3'-0"		7'-0"	1 3/4"	WD	A	5 7/8"	HM	9/A601A	9/A601A	A138		10		
A139	1	3'-0"		7'-0"	1 3/4"	WD	A	5 7/8"	HM	9/A601A	9/A601A	A139		11		
A140	1	3'-0"		7'-0"	1 3/4"	WD	A	5 7/8"	HM	9/A601A	9/A601A	A140		9		
A141	1	3'-0"		7'-0"	1 3/4"	WD	A	5 7/8"	HM	9/A601A	9/A601A	A141		10		
A142	1	4'-0"		7'-0"	1 3/4"	WD	A	7 3/4"	HM	9/A601A	9/A601A	A142		45	3	1,4

**COMMENTS**

- NOTES:
- CARD READER REQUIRED AT THIS DOOR.
  - DOOR RELEASE REQUIRED AT THIS DOOR FROM THE NURSE STATION AND SHARED OFFICE.
  - PROVIDE SAFE ZONE CLOSER AT THIS DOOR.
  - PROVIDE AUTO-OPENER AT THIS DOOR.
  - BREAKOUT SLIDING ALUM. GLASS DOOR. SEE SPECIFICATIONS.
  - COMBINED 45 MINUTE FIRE RATED HOLLOW METAL DOOR AND WINDOW FRAME REQUIRED.

**KEYED NOTES**

- VISION PANEL, GLAZING IN VISION PANEL SHALL BE 1/4" THICK, CLEAR, TEMPERED, GLAZING. FOR WOOD DOOR, PROVIDE WOOD TRIM FRAME FLUSH WITH THE FACE OF THE DOOR, AROUND THE VISION PANEL OPENING. STAIN AND SPECIES OF WOOD TRIM SHALL MATCH WOOD DOOR. FOR HOLLOW METAL DOOR, PROVIDE METAL TRIM AROUND VISION PANEL. GLAZING SHALL BE FIRE RATED IF DOORS ARE REQUIRED TO BE FIRE RATED.
- FOR EXTERIOR DOORS OF THIS TYPE, GLAZING SHALL BE TINTED, INSULATED, TEMPERED, LOW E, AND 1" THICK. FOR INTERIOR DOORS OF THIS TYPE, GLAZING SHALL BE CLEAR, TEMPERED AND 1/4" THICK. STAINLESS STEEL WELDED WIRE MESH (15 GAUGE) ATTACHED TO DOOR. PROVIDE FRAME AROUND THE OPENING IN DOOR TO SECURE THE MESH IN PLACE.
- METAL LOUVER IN DOOR FOR VENTILATION.



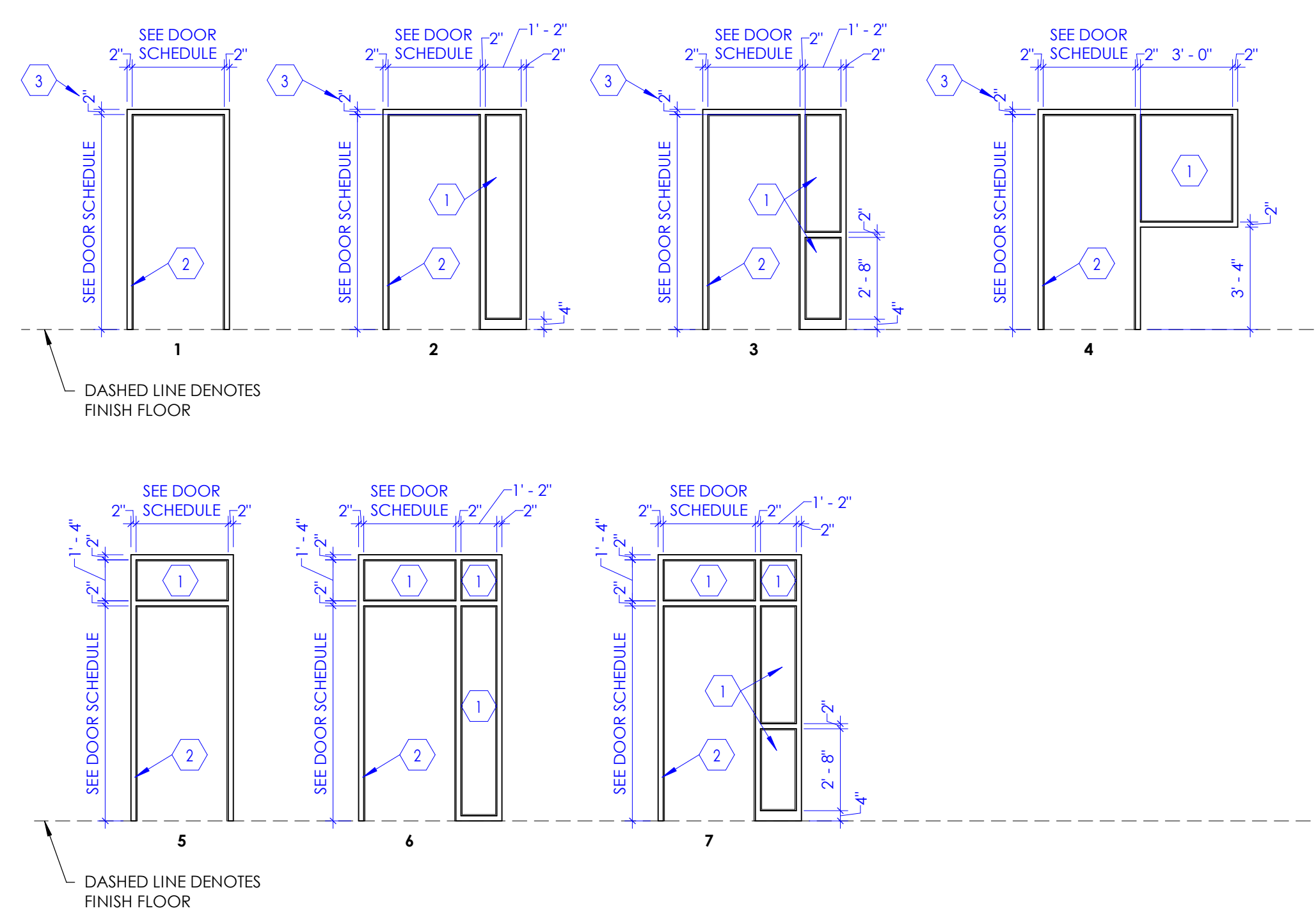
**1 Door Types**

NOTE: REFER TO "DOOR SCHEDULE" TABLE FOR DOOR TYPES REQUIRED FOR THIS PROJECT. SOME DOOR TYPE ELEVATIONS INDICATED ABOVE, MAY NOT BE APPLICABLE TO THIS PROJECT.

SCALE: 1/4" = 1'-0"

**KEYED NOTES**

- GLAZING SHALL BE CLEAR, TEMPERED, AND 1/4" THICK.
- DOOR FRAME, SEE DOOR SCHEDULE.
- WHERE DOOR OCCURS AT MASONRY WALL (8" HIGH, C.M.U. BLOCKS), AND WITH A TYPICAL DOOR HEIGHT OF 7'-0", USE 4" FRAME AS FRAME HEAD INSTEAD OF THE STANDARD 2" FRAME.



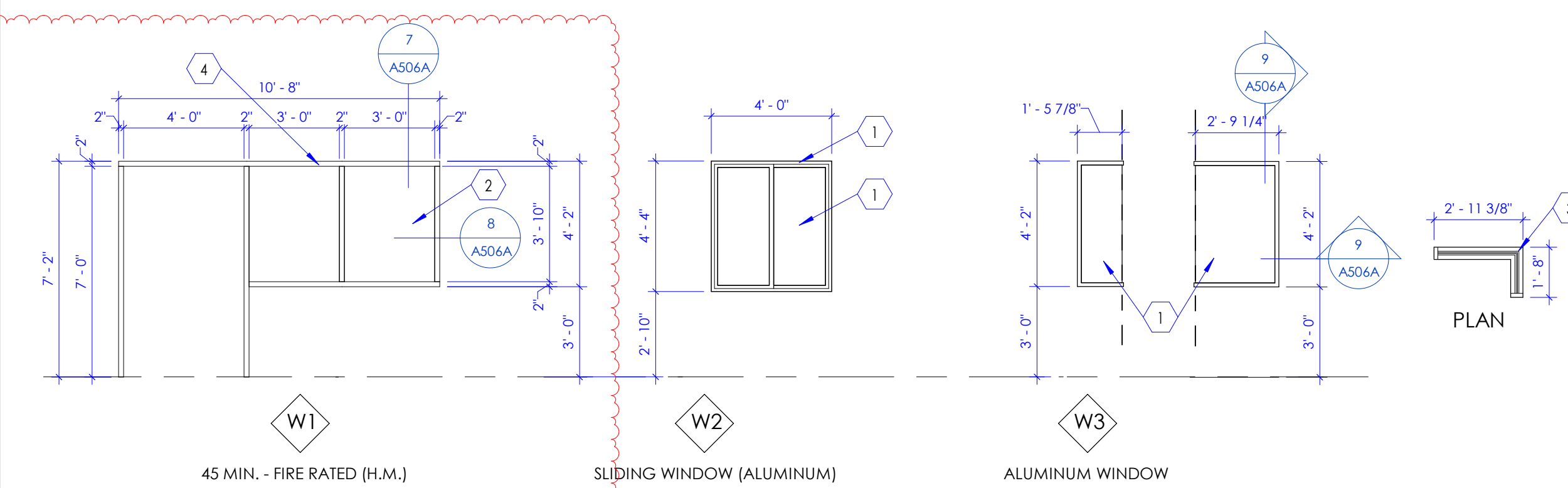
**2 Frame Types**

NOTE: REFER TO "DOOR SCHEDULE" FOR FRAME TYPES REQUIRED FOR THIS PROJECT. SOME FRAME TYPE ELEVATIONS INDICATED ABOVE MAY NOT BE APPLICABLE TO THIS PROJECT.

SCALE: 1/4" = 1'-0"

**KEYED NOTES**

- GLAZING SHALL BE CLEAR, TEMPERED, AND 1/4" THICK.
- 45 MINUTE FIRE RATED GLAZING REQUIRED AT THIS WINDOW.
- MITER GLASS AT CORNER.
- 45 MINUTE FIRE RATED HOLLOW METAL WINDOW SYSTEM.
- ALUMINUM AND GLASS MANUAL SLIDING WINDOW, OR LAWRENCE DW 4200 A TWO PANEL MANUAL DELUXE LOCKABLE SLIDING WINDOW, FINISH: SATIN ANODIZED.

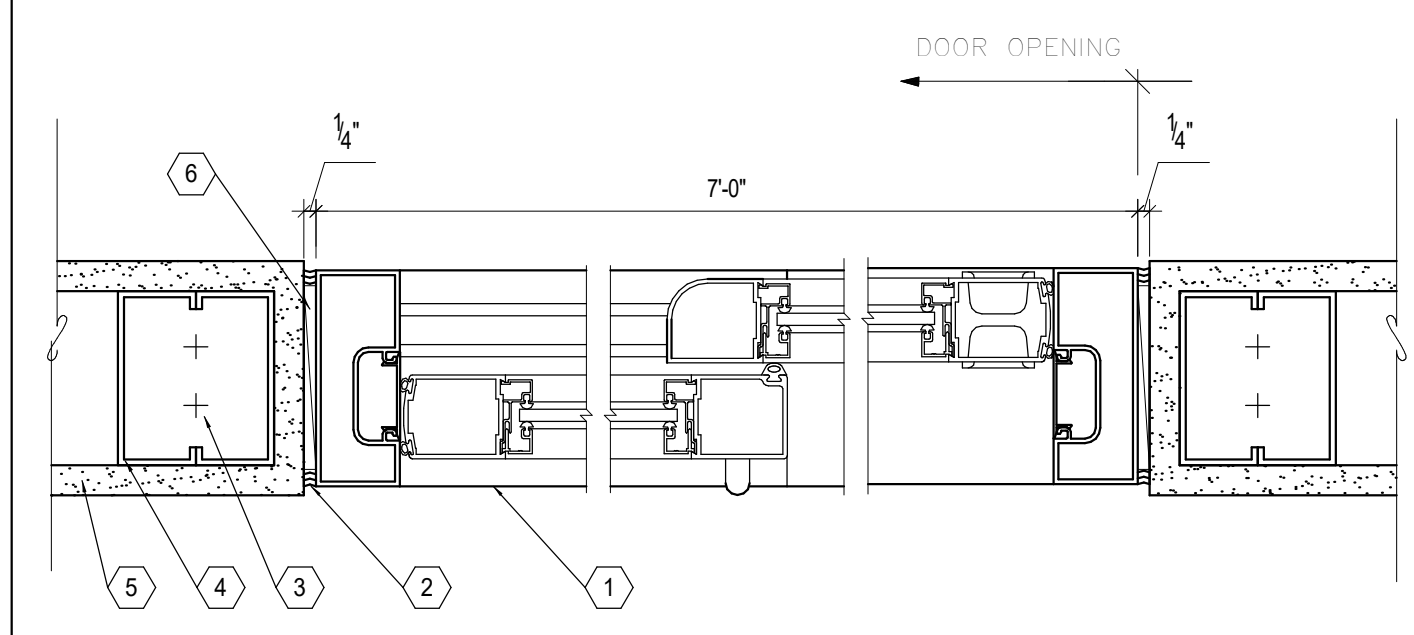


**3 Window Legend**

SCALE: 1/4" = 1'-0"

**KEYED NOTES**

- PRE MANUFACTURED ALUMINUM AND GLASS SLIDING DOOR. SEE PROJECT MANUAL FOR DETAILS.
- PROVIDE CLEAR SILICON SEALANT ALL AROUND DOOR FRAME, BOTH SIDES OF DOOR.
- (2) TYP. TRACK PINS AT DECK ABOVE AND FLOOR SLAB BELOW.
- DOUBLE METAL STUDS, SEAM WELD AT 12" O.C. TYP. USE 16 GA STUDS.
- 5/8" THICK TYPE 'X' GYP. BD. ALL AROUND.
- 1/4" SHIM SPACE AT EACH JAMB.

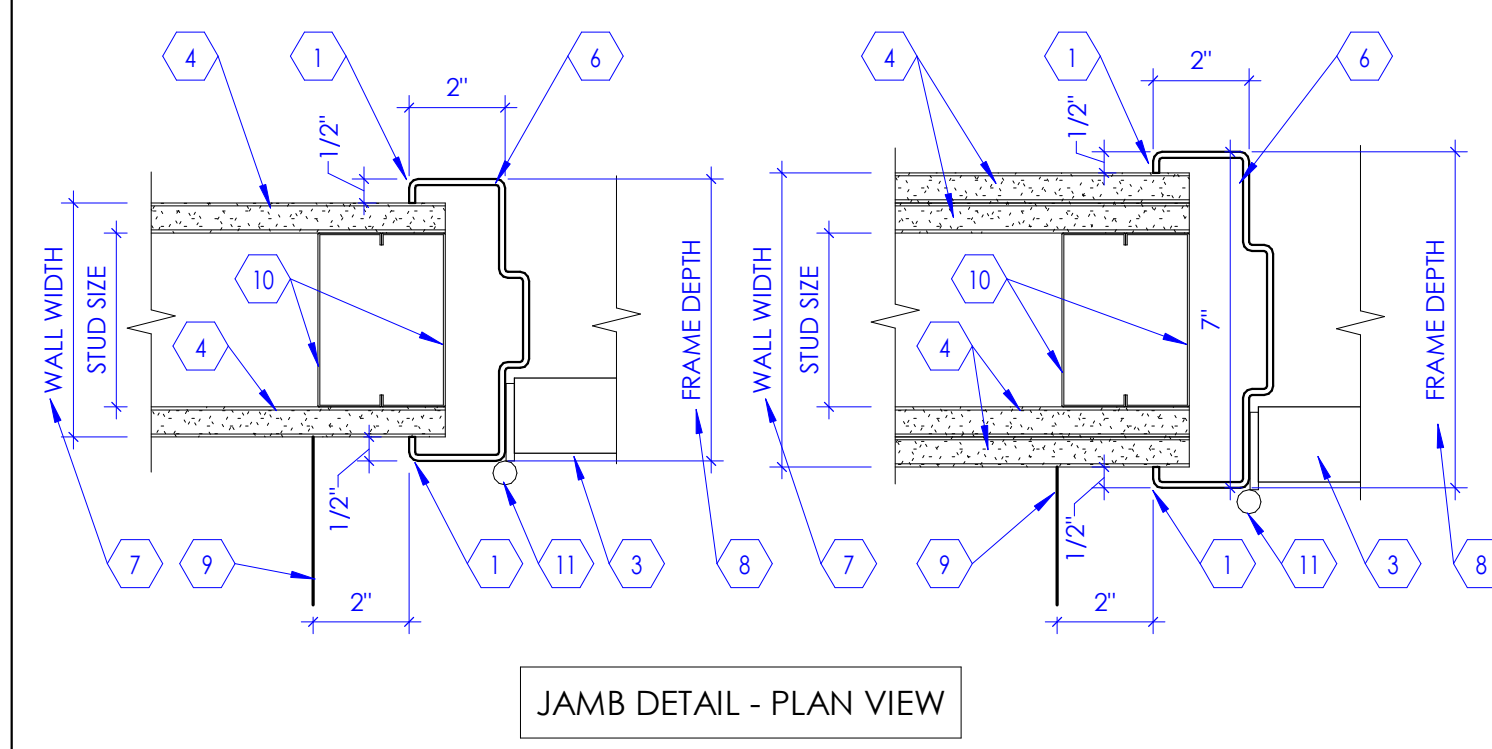
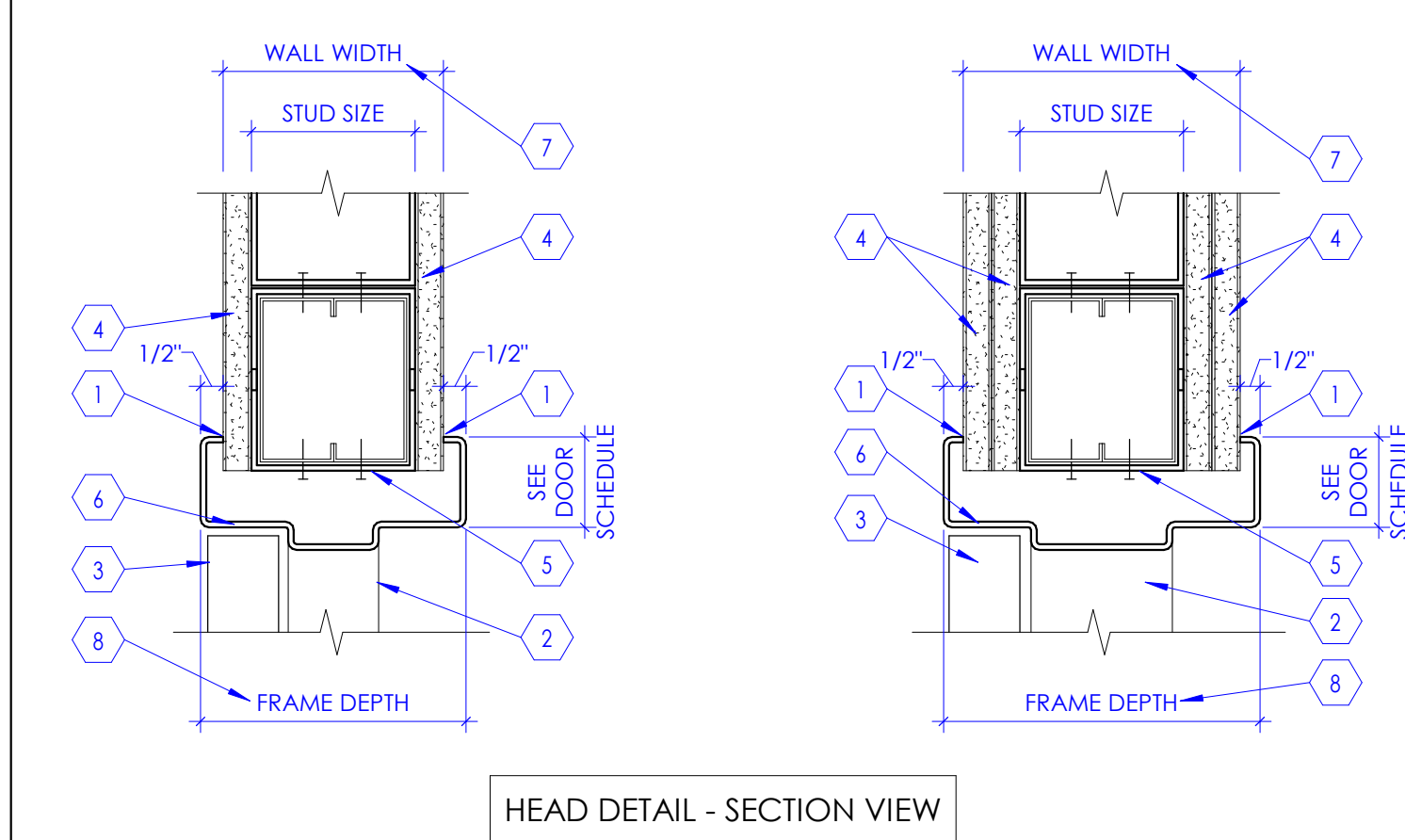


**8 Manual Sliding Breakout Door at Isolation Rooms**

SCALE: 3" = 1'-0"

**KEYED NOTES**

- CONTINUOUS SEALANT ON BOTH SIDES OF THE FRAME.
- DOOR FRAME SEEN BEYOND.
- DOOR. SEE DOOR SCHEDULE FOR DOOR TYPE.
- GYP. BOARD, 5/8" THICK, TYPE 'X', ATTACH TO METAL STUD FRAMING. SEE WALL TYPES.
- STEEL RUNNER (18 GAUGE) FASTENED WITH SCREWS TO STRUT STUDS AT EACH END. SEE DETAIL 6/A502A.
- HOLLOW METAL DOOR FRAME. FRAME THICKNESS VARIES WITH WALL THICKNESS. SEE FLOOR PLAN AND WALL SECTIONS. PAINT FRAME.
- SEE WALL TYPES FOR WALL WIDTH AND STUD SIZE.
- FRAME DEPTH SHALL BE WALL WIDTH PLUS 1".
- LINE OF WALL, AS OCCURS.
- PROVIDE DOUBLE METAL STUDS AT FRAME JAMBS, WALL ENDS, ETC. PROVIDE STEEL STRIPS (6" HIGH 1/4 GAUGE STRIPS AT 2'-0" O.C.) SEE DETAIL 7/A502A.
- DOOR HINGE AS OCCURS. SEE DOOR AND HARDWARE SCHEDULE. SEE FLOOR PLAN FOR DOOR SWING.

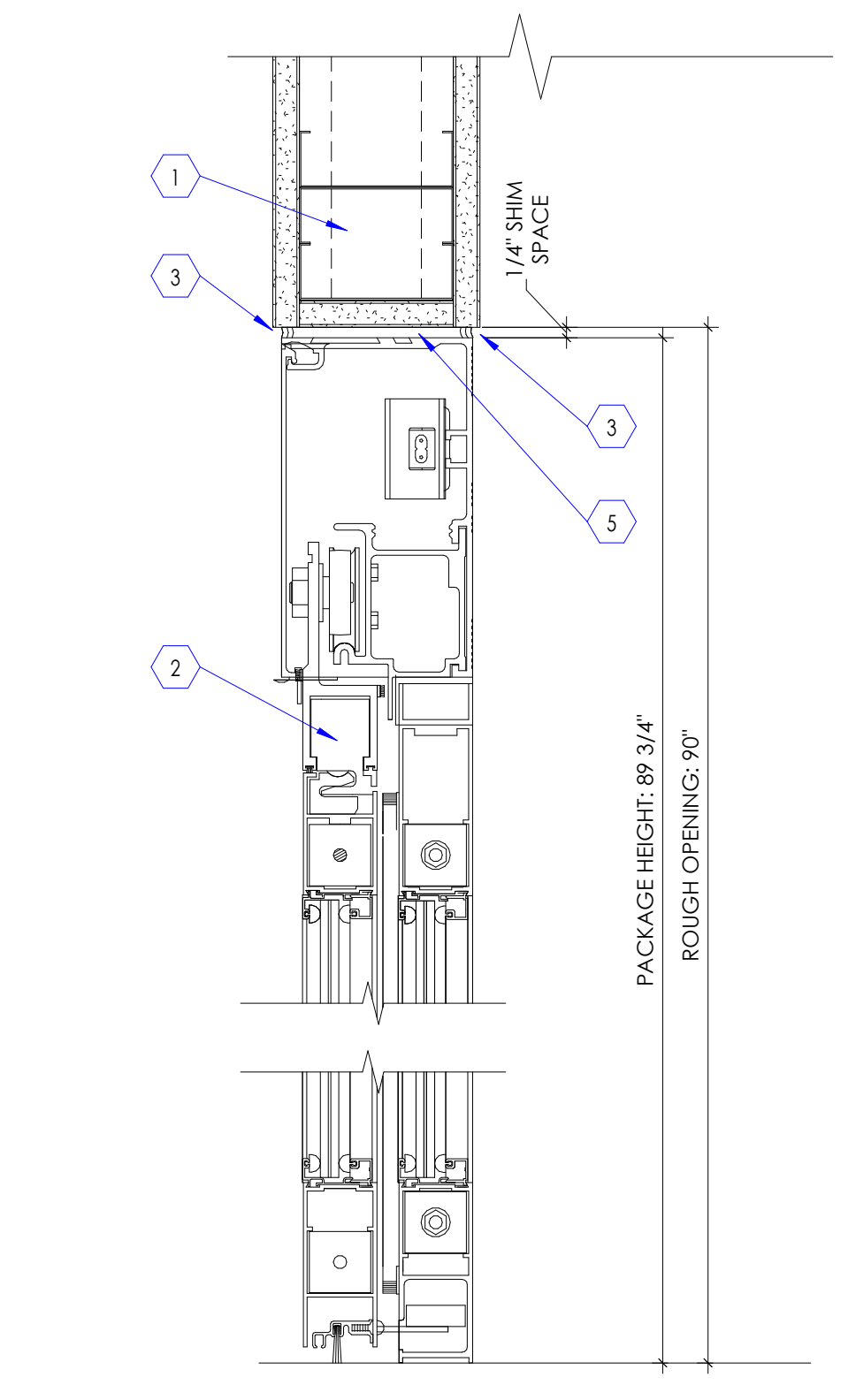


**9 Door Frame in Stud Wall**

SCALE: 3" = 1'-0"

**KEYED NOTES**

- SEE DETAIL 6/A502A FOR FRAMING AT DOOR HEADER.
- MANUAL SLIDING DOOR ALUMINUM AND GLASS DOOR AS SCHEDULED.
- PROVIDE CLEAR SILICON CAULKING ALL AROUND DOOR - BOTH SIDES.
- GYP. BD. SOFFIT AS SCHEDULED.
- SHIM AS REQUIRED.



**10 Sliding Door Head Detail**

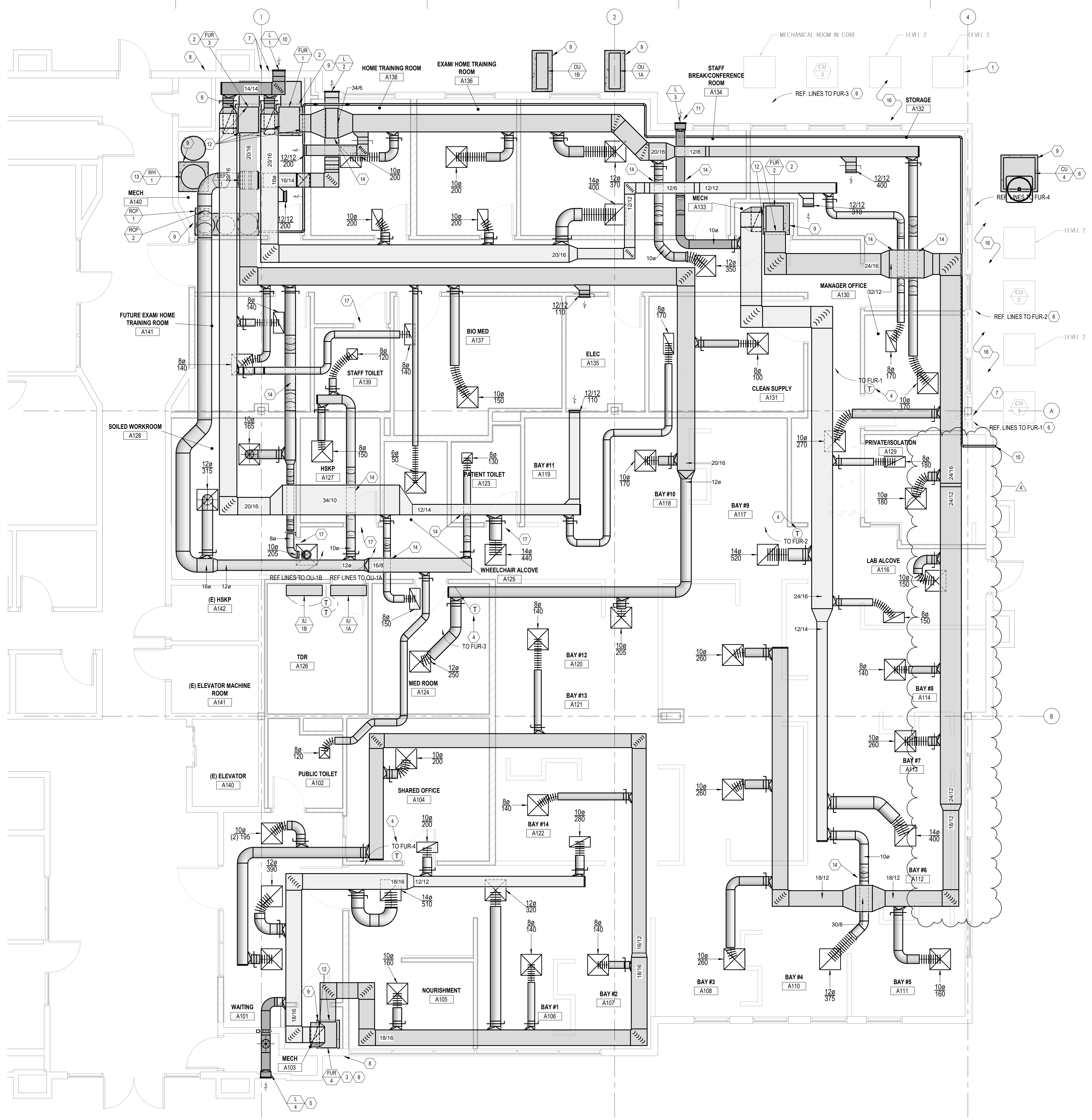
SCALE: 3" = 1'-0"

5/14/2020 3:42:21 PM



**KEYED NOTES**

- EXISTING ELEMENTS SHOWN LIGHT TO REMAIN, TYPICAL.
- RELOCATED EXISTING FURNACES.
- NEW FURNACE.
- PROVIDE NEW PROGRAMMABLE THERMOSTAT.
- INSTALL OUTSIDE AIR LOUVER AND CONNECT TO RETURN SYSTEM WITH A 10 INCH ROUND DUCT TO FUR-4. INSTALL MANUAL DAMPER AND BALANCE TO 250 CFM. CONNECTION TO RETURN SYSTEM SHALL BE REASONABLY CLOSE TO THE FURNACE. ADJUST RETURN FROM EACH ROOM TO BALANCE OUTSIDE AIR.
- RUN NEW REFRIGERANT LINES SETS FROM FURNACES TO CONDENSING UNITS. FIELD VERIFY WHICH CONDENSING UNITS SERVES EACH FURNACE BEFORE ANY DEMOLITION. INFORM ENGINEER OF ANY DISCREPANCIES ON THE DRAWINGS.
- RECONNECT 4 INCH VENT AND COMBUSTION AIR TO NEW FURNACE LOCATION. REUSE EXISTING SYSTEM AS NECESSARY, TYPICAL.
- INSTALL NEW 4 INCH VENT AND COMBUSTION AIR TO EXTERIOR. FOLLOW ALL MANUFACTURER RECOMMENDATIONS. INSTALL NEW VENT AND COMBUSTION AIR LOUVER ON EXTERIOR WALL.
- PROVIDE 4 INCH THICK HOUSEKEEPING PAD.
- INSTALL OUTSIDE AIR LOUVER AND CONNECT ONE 12 INCH ROUND DUCT TO THE RETURN AIR SYSTEM OF FUR-1 AND ONE 12 INCH DUCT TO THE RETURN AIR SYSTEM OF FUR-3. INSTALL MANUAL DAMPER IN EACH DUCT. BALANCE THE OUTSIDE AIR TO FUR-1 TO 410 CFM. BALANCE THE OUTSIDE AIR TO FUR-3 TO 445 CFM. CONNECTION TO RETURN SYSTEM SHALL BE REASONABLY CLOSE TO THE FURNACE. ADJUST RETURN FROM EACH ROOM TO BALANCE OUTSIDE AIR.
- REPLACE EXISTING OUTSIDE AIR HOOD WITH LOUVER. CONNECT TO RETURN SYSTEM WITH A 12 INCH ROUND DUCT TO FUR-2. INSTALL MANUAL DAMPER AND BALANCE TO 315 CFM. CONNECTION TO RETURN SYSTEM SHALL BE REASONABLY CLOSE TO THE FURNACE. ADJUST RETURN FROM EACH ROOM TO BALANCE OUTSIDE AIR.
- COORDINATE FINAL CONNECTION WITH FURNACE OPENINGS.
- ROUTE WITH A 4 INCH CONCENTRIC VENT SET TO THE EXTERIOR WALL.
- CONTRACTOR SHALL CLOSELY COORDINATE AREA WHERE DUCTWORK CROSSES. NO PLUMBING, FIRE PROTECTION, OR ELECTRICAL WILL BE ABLE TO RUN UNDERNEATH AREA.
- SALT LINE FOR WASTER SOFTENER. SYSTEM INSTALLED AND COORDINATED BY VENDOR.
- COORDINATE EXISTING REFRIGERANT LINES WITH FIRE RATING PENETRATIONS.
- UNDERCUT DOORS TO ALLOW FOR AIRFLOW UNDER DOORS.



**1** LEVEL 1 MECHANICAL PLAN  
SCALE: 1/4"=1'-0"



Intermountain Healthcare

Dialysis Clinic Expansion

400 East 2400 South  
Tooele, Utah 84074

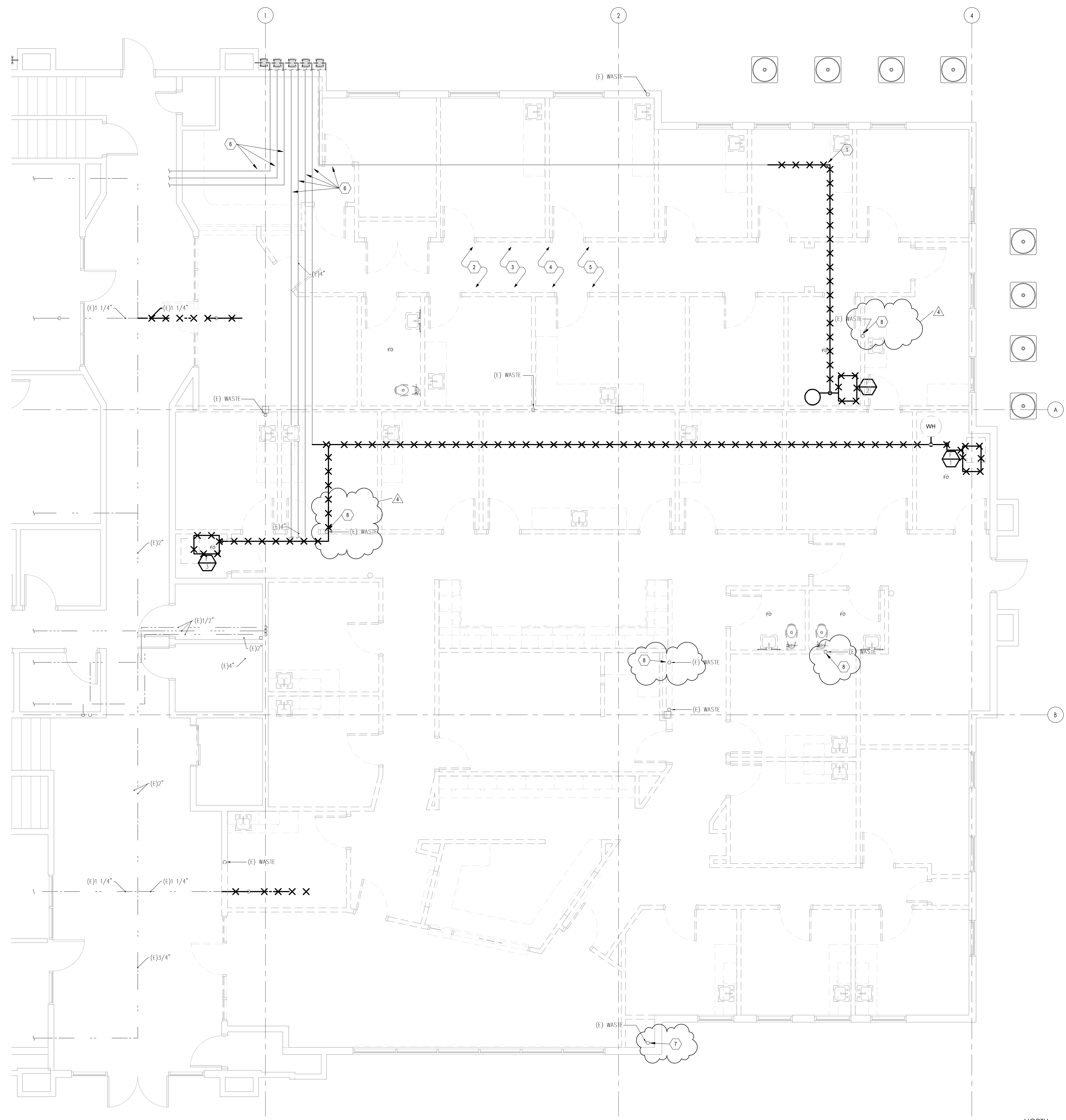
NJRA Project # 19230.00  
Construction Documents February 03, 2020  
1. Addendum #1 02/17/20  
3. ASI-001 03/02/20  
4. ASI-005 Date 4

LEVEL 1  
MECHANICAL  
PLAN

MH101

5/14/2020 4:57:17 PM





- KEYED NOTES**
- EXISTING ELEMENTS SHOWN DARK AND INDICATED WITH AN "X" TO BE DEMOLISHED. TYPICAL.
  - DEMOLISH ALL DOMESTIC WATER LINES BACK TO MAIN.
  - DEMOLISH ALL VENT LINES.
  - DEMOLISH ALL WASTE LINES. CUT BELOW CONCRETE AND CAP PATCH FLOOR.
  - DEMOLISH ALL FIRE SPRINKLER PIPING BACK TO RISER.
  - DISASSEMBLE ALL GAS LINES. REASSEMBLE GAS LINES AFTER SHEETROCK HAS BEEN INSTALLED TO JOISTS. COORDINATE ALL SHUTDOWNS WITH EFFECTED TENANTS. PIPES SHALL BE DISASSEMBLED AND REINSTALLED OVER WEEKEND TO MITIGATE OPERATIONAL DOWNTIME. PROVIDE TEMPORARY TRAP AS NECESSARY.
  - DISCONNECT WASTE PIPING IN CEILING AND DROP WASTE DOWN EXTERIOR WALL CAVITY. MAKE SURE THAT PIPE IS COMPLETELY COVERED WITH INSULATION ON THE EXTERIOR SIDE OF PIPE. ONCE WASTE PIPING IS BELOW THE CABINET CONTRACTOR CAN JOG BACK TO WHERE THE EXISTING DROP IS LOCATED IN ORDER TO AVOID BREAKING UP CONCRETE.
  - DISCONNECT PIPING IN CEILING AND ROUTE AS SHOWN ON PP101.



**NJRA Architects, Inc.**  
 5272 S. College Drive, Suite 104  
 Murray, Utah 84123  
 801.364.9259  
 www.njraarchitects.com



**VAN BOERUM & FRANK ASSOCIATES, INC.**  
 CONSULTING ENGINEERS  
 WWW.VBFA.COM  
 Salt Lake City - Logan - St. George - Temple  
 330 South 300 East 801.530.3148 T  
 Salt Lake City, UT 84111 801.530.3150 F  
 VBFA Project Number: 19605

Intermountain Healthcare  
**Dialysis Clinic Expansion**

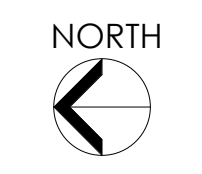
400 East 2400 South  
 Tooele, Utah 84074

NJRA Project # 19230.00  
 Construction Documents February 03, 2020  
 4 ASI-006 Date 4

LEVEL 1  
 PLUMBING  
 DEMOLITION  
 PLAN

**PD101**

**1 LEVEL 1 PLUMBING DEMOLITION PLAN**  
 SCALE: 1/4" = 1'-0"

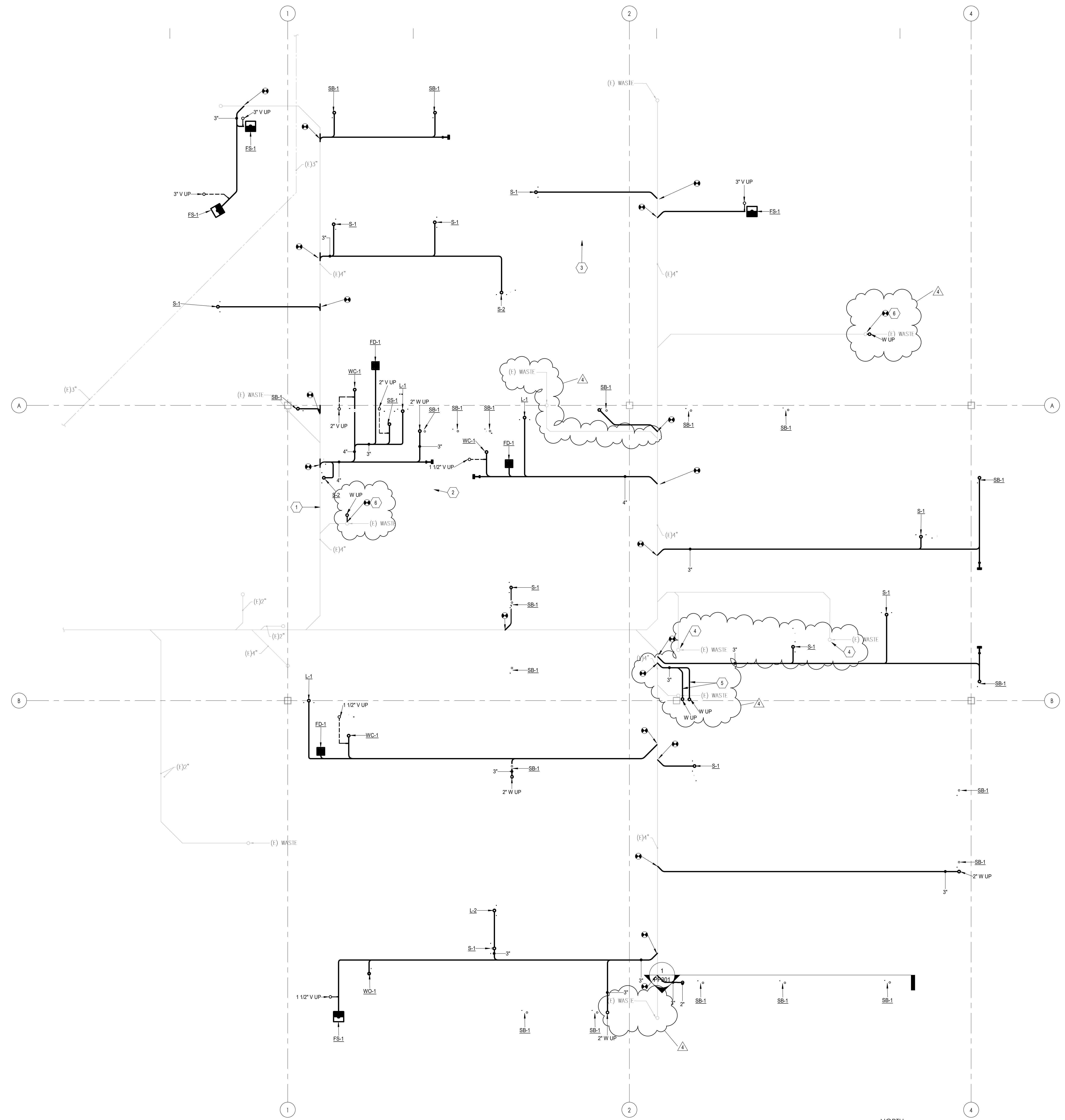


5/14/2020 4:57:20 PM



**KEYED NOTES**

1. EXISTING ELEMENTS SHOWN LIGHT, TYPICAL.
2. CONTRACTOR RESPONSIBLE FOR COORDINATING AND LOCATING ALL CLEANOUTS PER CODE IN ADDITION TO CLEANOUTS CALLED OUT ON PLANS, TYPICAL.
3. WALLS SHOWN FROM ABOVE, TYPICAL.
4. CAP IN FLOOR.
5. FLOOR CUT FOR EXISTING WASTE DROP, TIE INTO NEAREST WASTE LINE.
6. FLOOR CUT TO TIE INTO EXISTING DROP LOCATIONS.



5/14/2020 4:57:22 PM

**1 BELOW GRADE PLUMBING PLAN**  
SCALE: 1/4" = 1'-0"

Intermountain Healthcare

**Dialysis Clinic Expansion**

400 East 2400 South  
Tooele, Utah 84074

NJRA Project #	19230.00
Construction Documents	February 03, 2020
1. Addendum #1	02/17/20
2. Addendum #2	02/18/20
3. ASI-001	03/02/20
4. ASI-005	Date 4

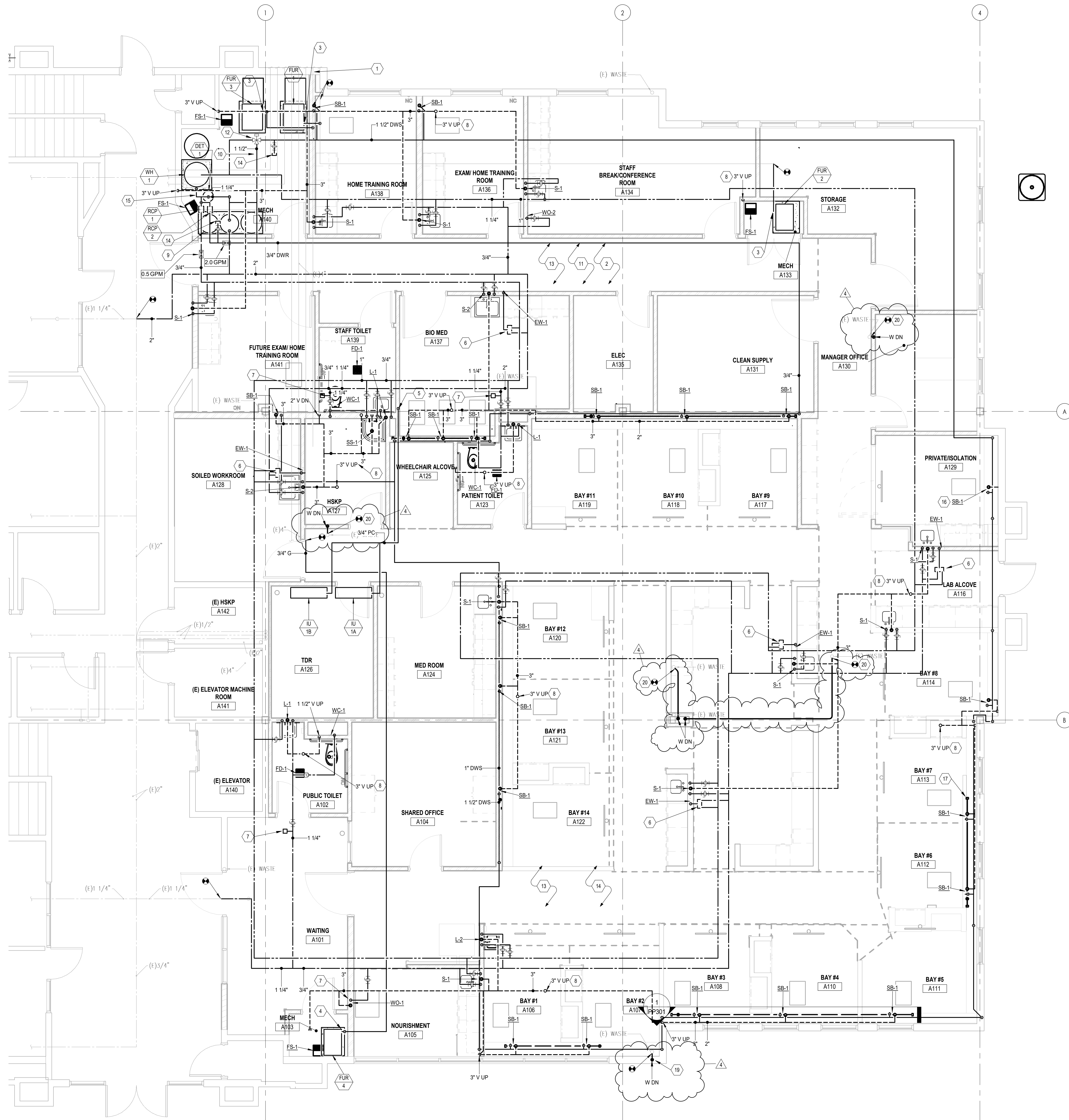
**BELOW GRADE PLUMBING PLAN**

**PP100**



**KEYED NOTES**

- EXISTING ELEMENTS SHOWN LIGHT TO REMAIN, TYPICAL.
- INSTALL NEW FIRE SPRINKLERS.
- RELOCATE EXISTING PRV
- INSTALL NEW 4 OZ PRV.
- DROP DOWN WALL AND TERMINATE IN SERVICE SINK.
- THERMOSTATIC MIXING VALVE INSTALLED IN CEILING.
- PROVIDE HAMMER ARRESTOR ON ALL FAST ACTING VALVES, TYPICAL.
- FIELD VERIFY LOCATION OF EXISTING VENT LINES PENETRATING LEVEL 2 FLOOR. CONNECT NEW VENT LINES TO EXISTING VENT LINES PENETRATING LEVEL 2 FLOOR. RUN ADDITIONAL PIPING AS NECESSARY.
- OWNER PROVIDED WATER SOFTENER.
- CONNECT TO OWNER PROVIDED WATER SOFTENER.
- ALL SPRINKLER HEADS SHALL BE QUICK RESPONSE THROUGHOUT EACH REMODELED COMPARTMENT. TYPICAL. FIRE SPRINKLERS SHALL BE INSTALLED TO MEET NFPA 13-2016 REQUIREMENTS, TYPICAL.
- INSTALL THERMOSTATIC MIXING VALVE FOR REVERSE OSMOSIS APPLICATIONS.
- INSTALL FIRE SPRINKLER SPRINKLERS AND PIPING AS NECESSARY FOR THE REMODELED SPACE, INCLUDING NEW FLOOR PLAN, CEILING PLAN, AND CEILING HEIGHT ADJUSTMENTS. REFER TO THE ARCHITECTURAL SHEETS FOR COMPLETE SCOPE OF THE PROJECT.
- VALVE AND CAP FOR OWNER TO CHLORINATE LINE.
- CONNECT RETURN LINE TO WATER HEATER PER MANUFACTURER RECOMMENDATIONS.
- SEE ARCHITECTURAL PLANS FOR ELEVATION AND EXACT LOCATION OF SUPPLY BOX, TYPICAL.
- TYPICAL CLEANOUT, SEE PP301 FOR SECTION.
- DISASSEMBLE GAS PIPING FOR SHEETROCK INSTALLATION TO JOISTS.
- DISCONNECT WASTE PIPING IN CEILING AND DROP WASTE DOWN EXTERIOR WALL CAVITY. MAKE SURE THAT PIPE IS COMPLETELY COVERED WITH INSULATION ON THE EXTERIOR SIDE OF PIPE. ONCE WASTE PIPING IS BELOW THE CABINET CONTRACTOR CAN JOG BACK TO WHERE THE EXISTING DROP IS LOCATED IN ORDER TO AVOID BREAKING UP CONCRETE.
- DISCONNECT PIPING IN CEILING AND ROUTE AS SHOWN.



**1 LEVEL 1 PLUMBING PLAN**  
SCALE: 1/4" = 1'-0"

Intermountain Healthcare

**Dialysis Clinic Expansion**

400 East 2400 South  
Tooele, Utah 84074

NJRA Project #	19230.00
Construction Documents	February 03, 2020
1 Addendum #1	02/17/20
2 Addendum #2	02/18/20
3 ASI-001	03/02/20
4 ASI-005	Date 4

**LEVEL 1  
PLUMBING  
PLAN**

**PP101**

5/14/2020 4:57:26 PM