



# ARCHITECT'S SUPPLEMENTAL INSTRUCTIONS

Date Issued:	May 22, 2020
Project:	Intermountain Healthcare <b>Tooele Valley Dialysis Clinic Expansion</b> 2356 North 400 East, Suite #102 Tooele, Utah 84074
Architect's Supplemental Instructions:	<b>ASI #7</b>
To:	Saunders Construction 1113 South 500 West Bountiful, Utah 84010

The Work shall be revised in accordance with the following supplemental instructions, and shall be carried out in accordance with the Contract Documents. Prior to proceeding with the work described, the Contractor is to determine if the work is to affect the contract amount. If additional costs are to be incurred, the Contractor shall submit an itemized cost breakdown showing time, material and other items affected by the change. After acceptance of this work and associated costs, a change order will be prepared for signatures to affect a change to the contract.

Item Number	Description
1	As requested by the Owner Wall mounted Ergotron Computer Charting stations have been added at the exam/ training room and the isolation room. Outlets and data in these rooms and few other places have also been re-arranged and or revised as necessary. See attached Architectural sheet A113 and Electrical sheet EP101 with revisions shown clouded.
2	See attached Electrical ASI #7 memo from Spectrum Engineers.

**Attachments:**

ASI #7 Cover sheet memo from Spectrum Engineers,  
 Drawings: Revised sheets A113 & EP101.



**SPECTRUM**  
ENGINEERS

## Electrical ASI #07

**Project:** Dialysis Clinic Expansion

**From:** Peter Johansen

**Project No:** 20190957

**Date:** May 21, 2020

---

### DISCIPLINES

Mechanical Engineering  
Electrical Engineering  
Technology Design  
Acoustical Engineering  
Lighting Design  
Theatre Design  
Fire Protection Engineering  
Building Commissioning

### CENTERS OF

### ENGINEERING EXCELLENCE

Healthcare  
Higher Education  
K-12 Education  
Government  
Houses of Worship  
Special Projects

## DRAWINGS

### EP101

1. Relocated monitor receptacles to 48" AFF in A136, A138, & A141.
2. Added wall phone in A136, A138, & A141.
3. Added a 2-drop data receptacle in A141.
4. Relocated power receptacle and added a 2-drop data receptacle in A132.
5. Power receptacle in A129 was re-circuited/repurposed to provide power for a monitor.
6. Added data for monitor in A129.
7. Three 2-drop data receptacles in A109 were changed to 3-drop data receptacles.

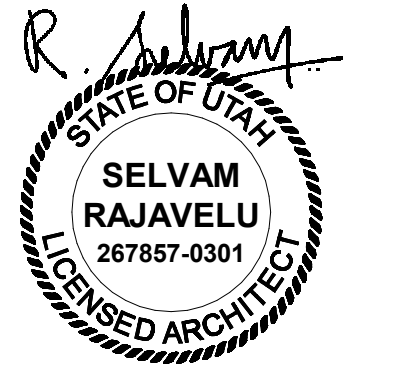
### SALT LAKE CITY

324 S. State Street  
Suite 400  
Salt Lake City, UT 84111  
phone: 801-328-5151  
fax: 801-328-5155

### PHOENIX

1501 W. Fountainhead Parkway  
Suite 340  
Tempe, AZ 85282  
phone: 480-621-3444  
fax: 480-621-3445

www.spectrum-engineers.com  
800-678-7077



**KEYED NOTES**

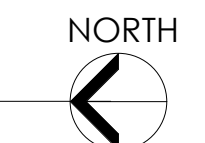
- 01.08 CLEAN GOWN STORAGE.
- 01.14 DASHED LINE INDICATES AREA OF FUTURE TRAINING ROOM A141 TO BE BID UNDER BID ALTERNATE #1. THE ROOM SHALL HAVE WALLS AND DOOR IN BASE BID ALONG WITH PLUMBING PIPING, HVAC ITEMS NOTED IN CONSTRUCTION DOCUMENTS, NEW FINISHES, CEILING, MILLWORK, LIGHTING, PLUMBING FIXTURE ETC. TO BE BID UNDER ALTERNATE #1.
- 01.16 SOILED GOWN STORAGE.
- 02.24 UPGRADE EXISTING WALL TO TYPE-G BY REPLACING GYPSUM BOARD TO TYPE-K GYPSUM AND EXTENDING WALL TO DECK ABOVE FOR A ONE-HR FIRE RATING.
- 02.26 EXISTING FIRE RATED DOOR AND HARDWARE TO REMAIN. PROTECT DURING CONSTRUCTION.
- 02.39 EXISTING DOOR AND HARDWARE TO REMAIN. PROTECT DURING CONSTRUCTION.
- 06.01 NEW CASEWORK. SEE INTERIOR ELEVATIONS AND FINISH PLANS.
- 06.17 PLUMBING CHASE WALL. SEE INTERIOR ELEVATIONS AND DETAILS ON SHEET A505. ALSO SEE ELECTRICAL AND PLUMBING DRAWINGS.
- 06.21 SOLID SURFACE INTEGRAL SINK. BASIS OF DESIGN: SAMSUNG STARON A1181 SINK, COLOR 'BRIGHT WHITE' BW10. ALSO SEE PLUMBING DRAWINGS.
- 08.01 NEW DOOR. SEE DOOR SCHEDULE FOR MORE INFORMATION. WOOD DOOR AT THE BUILDING HALLWAY SHALL MATCH COLOR AND FINISH OF THE ADJACENT EXISTING WOOD DOORS IN THE HALLWAY. WOOD DOORS INSIDE THE REMODEL SUITE SHALL BE CLEAR MAPLE FINISH.
- 08.03 CARD ACCESS, TYPICAL. SEE ELECTRICAL DRAWINGS.
- 08.04 CARD ACCESS AND AUTOMATED DOOR OPENER. SEE ELECTRICAL DRAWINGS.
- 08.05 PUSH PAD FOR AUTO DOOR ACTIVATION. SEE ELECTRICAL DRAWINGS.
- 08.07 OVERHEAD CONCEALED FULL BREAKOUT TRACKLESS UL 1784 SMOKE RATED NARROW SLIT SINGLE SLIDE ALUMINUM AND GLASS DOOR. BASIS OF DESIGN: ASSA ABLOY VERBA MAX ICL DOOR SYSTEM. GLAZING TO BE 1/4" CLEAR TEMPERED. SEE DETAIL 8/A601A & 10/A601A.
- 08.08 EXISTING EXTERIOR WINDOWS TO REMAIN. PROTECT DURING CONSTRUCTION. ALUMINUM AND GLASS MANUAL SLIDING WINDOW. BASIS OF DESIGN: C. R. LAURINCZE DW 4000 A TWO PANEL MANUAL DELUXE LOCKABLE SLIDING WINDOW. FINISH: SATIN ANODIZED. SEE SHEET A601A.
- 08.10 INTERIOR WINDOW. SEE SCHEDULE. HM WINDOW FRAME AND GLAZING TO BE 1-HR FIRE RATED.
- 09.04 PARTIAL HEIGHT WALL WITH SOLID SURFACE CAP. SEE WALL TYPE 'P' ON SHEET A501.
- 09.08 3/4" THICK FIRE TREATED PLYWOOD FROM TOP OF BASE TO 7'-0" ABOVE BASE-ALL WALLS. TYPICAL. PAINT PLYWOOD TO MATCH WALL COLOR.
- 09.27 PROVIDE SOLID SURFACE WINDOW SILL AT ALL EXTERIOR WINDOWS TYPICAL. SEE FINISH SCHEDULE AND DETAIL 5/A602A.
- 10.06 GRAB BARS. SEE SPECIFICATIONS. PROVIDE TYPE 1 METAL STUD BACKING PER DETAIL 5/A502A. SEE SHEET G003 FOR MOUNTING HEIGHTS.
- 10.11 METAL LOCKERS. 15" W X 18" D X 2" THICK. 10 LOCKERS. SEE SPECIFICATIONS. SEE DETAIL 6/A506A FOR LOCKER BASE DETAIL.
- 10.18 COFFEE POT, OFCI. SEE ELECTRICAL DRAWINGS.
- 10.19 REFRIGERATOR, OFCI. SEE ELECTRICAL DRAWINGS.
- 11.02 NURSE CHARTING STATION. SEE DETAIL 1/A504A. ALSO SEE DETAIL 13/A502A FOR BACKING REQUIREMENTS. SEE ELECTRICAL DRAWINGS FOR POWER AND DATA.
- 11.03 PATIENT CHAIR/ RECLINER, OFCI.
- 11.05 METAL SHELVING, OFCI.
- 11.06 WALL MOUNTED MONITOR OFCI. SEE ELECTRICAL DRAWINGS. PROVIDE 3'-0" W X 2'-0" H X 18 GA SHEET METAL BACKING.
- 11.07 DIALYSIS HOSE AND SUPPLY BOX. SEE PLUMBING DRAWINGS. VERIFY LOCATION AND HEIGHT WITH OWNER BEFORE INSTALLATION.
- 11.08 TABLE HEMODIALYSIS SYSTEM. PROVIDED AND INSTALLED BY OWNERS VENDOR.
- 11.12 VENDING MACHINE, OFCI. SEE ELECTRICAL DRAWINGS.
- 11.13 ICE AND WATER DISPENSER ON STAND, OFCI. SEE PLUMBING DRAWINGS.
- 11.14 FLUSH MOUNTED IN-FLOOR SCALE, OFCI. CONCRETE FLOOR TO HAVE A 3" RECESS FOR IN-FLOOR SCALE. RECESS TO BE 3'-0" W X 3'-4" D. PROVIDE 10" MINIMUM CLEARANCE FROM BACK WALL AND 6" MINIM CLEARANCE FROM SIDE WALL AS SHOWN. ALSO PROVIDE 3" RECESS FOR CONDUIT CENTERED ON THE RECESSED SLAB IN-FLOOR SCALE. FROM THE FLOOR SCALE TO WALL BEHIND. COORDINATE WITH IN-FLOOR SCALE MANUFACTURER. SEE DETAIL 2/A504A. POUR NEW THICKENED SLAB AFTER REMOVAL OF CONCRETE.
- 11.15 HIGH DENSITY WIRE SHELVING, OFCI.
- 11.16 FLOOR MOUNTED BLANKET WARMER, OFCI. SEE ELECTRICAL DRAWINGS FOR POWER REQUIREMENTS.
- 11.17 LINEN CART, OFCI.
- 11.18 EXAM TABLE, OFCI. SEE ELECTRICAL DRAWINGS FOR POWER REQUIREMENTS.
- 12.01 FURNITURE. TO BE PROVIDED AND INSTALLED BY OWNERS VENDOR (MIDWEST COMMERCIAL INTERIORS - MWCI).
- 12.02 PRIVACY CURTAIN AND TRACK. SEE FINISH SCHEDULE AND PROJECT MANUAL. SEE DETAIL 13/A503A.
- 12.03 PROVIDE AND INSTALL 1" ALUMINUM BLINDS AT ALL EXTERIOR WINDOWS. TYPICAL THROUGHOUT THE PROJECT. FIELD VERIFY WINDOW SIZE BEFORE INSTALLATION.
- 22.01 FLOOR MOUNTED WATER CLOSET. SEE PLUMBING DRAWINGS.
- 22.02 WALL MOUNTED HAND WASH SINK. SEE PLUMBING DRAWINGS.
- 22.03 MOP SINK. SEE PLUMBING DRAWINGS.
- 22.04 COUNTER MOUNTED STAINLESS STEEL DEEP SINK. SEE PLUMBING DRAWINGS.
- 22.05 COUNTER MOUNTED EYE WASH. SEE PLUMBING DRAWINGS.
- 26.04 WALL MOUNTED PLUG STRIP. SEE ELECTRICAL DRAWINGS.
- 26.06 DOOR RELEASE BUTTON. SEE ELECTRICAL DRAWINGS.
- 26.14 NURSE CALL WITH PULLO SPEAKER. SEE ELECTRICAL DRAWINGS.
- 26.16 WALL PHONE. SEE ELECTRICAL DRAWINGS.
- 26.17 FLOOR MOUNTED MULTI FUNCTION PRINTER/COPIER. SEE ELECTRICAL DRAWINGS FOR POWER AND DATA.
- 26.19 SEE ELECTRICAL DRAWINGS FOR FLOOR BOX RECESSED IN CONCRETE TO PROVIDE POWER AND DATA CONNECTION TO THE TABLE. COORDINATE WITH OWNERS VENDOR MIDWEST FURNITURE FOR LOCATION OF THE TABLE LEGS TO RUN ELECTRICAL CONNECTIONS TO THE TABLE.

**GENERAL NOTES**

- A. SEE SHEET G003 AND G005 FOR SYMBOLS, GENERAL NOTES AND LEGEND.
- B. SEE SHEET A505A FOR CABINET LEGEND.
- C. SEE SHEET A601A FOR DOOR SCHEDULE AND WINDOW SCHEDULE.
- E. SEE SHEET A602A FOR FINISH SCHEDULE AND GENERAL NOTES.



1 Floor Plan Level 1  
SCALE: 1/4" = 1'-0"



Intermountain Healthcare

Tooele Valley Dialysis Clinic Expansion

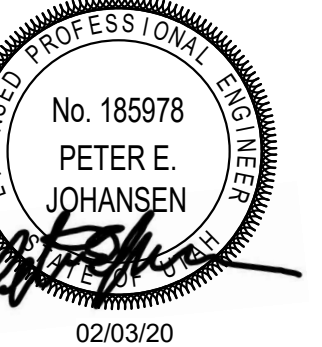
Northpointe Medical Park, Bldg B  
2356 North 400 East, Suite # 102  
Tooele, Utah 84074

NJRA Project #	19230.00
Construction Documents	Feb 4, 2020
2 ASI #1	Mar 5, 2020
3 ASI #6	May 14, 2020
4 ASI #7	May 21

Floor Plan  
Level 1

A113

5/21/2020 11:06:42 AM

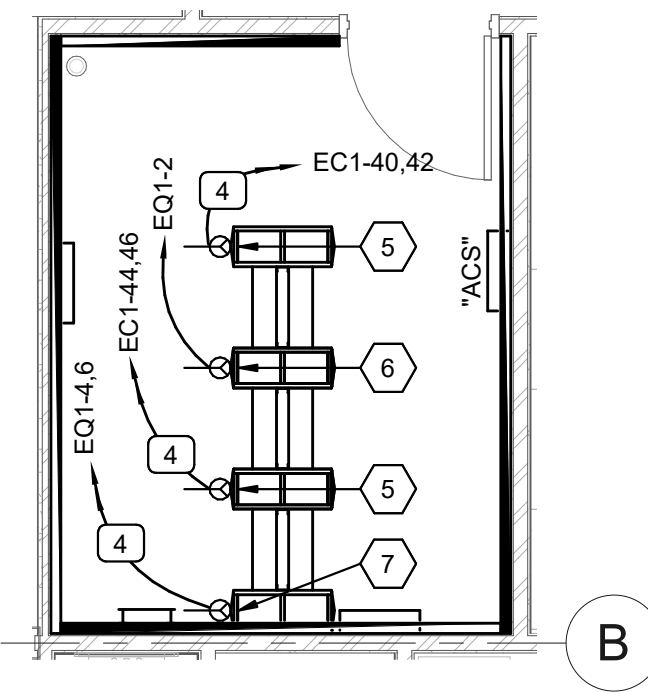
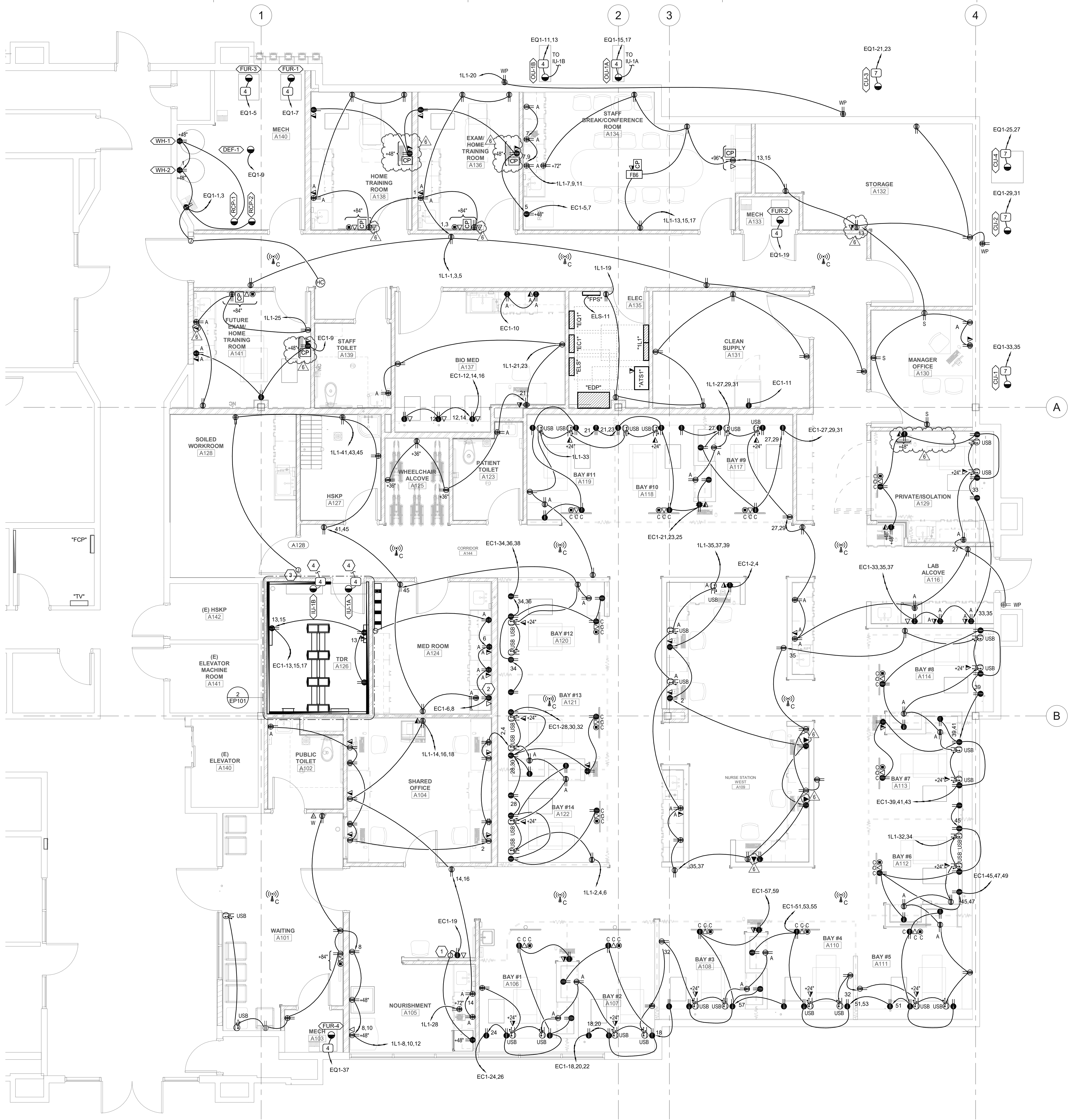


GENERAL SHEET NOTES

1 GROUNDING FOR ALL CIRCUITS TO MEET NEC 517-13 (a) & (b) REQUIREMENTS.

SHEET KEYNOTES

- 1 RUN .75" CONDUIT FROM IN-FLOOR SCALE TO MONITOR RECESSED IN WALL.
- 2 POWER AND DATA FOR U/C FRIDGE. FRIDGE WILL HAVE TEMP TRACKING.
- 3 PROVIDE 120 VOLT POWER TO SAFE-ZONE CLOSER.
- 4 CIRCUIT WITH OUT DOOR SPLIT SYSTEM UNIT.
- 5 L6/30 RECEPTACLE MOUNTED AT 76".
- 6 L5/20R RECEPTACLE MOUNTED AT 76".
- 7 L14/30 RECEPTACLE MOUNTED AT 71" AFF TO BOTTOM OF BOX.



1 POWER PLAN LEVEL 1  
SCALE: 1/4" = 1'-0"

2 TDR A126 POWER PLAN  
SCALE: 1/4" = 1'-0"

Intermountain Healthcare

Tooele Valley Dialysis Clinic Expansion

Northpointe Medical Park, Bldg B  
2356 North 400 East, Suite # 102  
Tooele, Utah 84074

NJRA Project #	19230.00
Construction Documents	Feb 03, 2020
2 ASI #01	03/02/20
5 ASI #05	05/05/20
6 ASI #07	05/21/20

POWER PLAN  
LEVEL 1

EP101

C:\Users\baoo\Documents\20190957 ELEC CENTRAL\_boc45407.rvt