

KEYED NOTES

- 01.08 CLEAN GOWN STORAGE.
- 01.14 DASHED LINE INDICATES AREA OF FUTURE TRAINING ROOM A141 TO BE BID UNDER BID ALTERNATE #1. THE ROOM SHALL HAVE WALLS AND DOOR IN BASE BID ALONG WITH PLUMBING PIPING, HVAC ITEMS NOTED IN CONSTRUCTION DOCUMENTS, NEW FINISHES, CEILING, MILLWORK, LIGHTING, PLUMBING FIXTURE ETC. TO BE BID UNDER ALTERNATE #1.
- 01.16 SOILED GOWN STORAGE.
- 02.24 UPGRADE EXISTING WALL TO TYPE-G BY REPLACING GYPSUM BOARD TO TYPE-X GYPSUM AND EXTENDING WALL TO DECK ABOVE FOR A ONE-HR FIRE RATING.
- 02.26 EXISTING FIRE RATED DOOR AND HARDWARE TO REMAIN. PROTECT DURING CONSTRUCTION.
- 02.39 EXISTING DOOR AND HARDWARE TO REMAIN. PROTECT DURING CONSTRUCTION.
- 06.01 NEW CASEWORK. SEE INTERIOR ELEVATIONS AND FINISH PLANS.
- 06.01 PLUMBING CHASE WALL. SEE INTERIOR ELEVATIONS AND DETAILS ON SHEET A505. ALSO SEE ELECTRICAL AND PLUMBING DRAWINGS.
- 06.21 SOLID SURFACE INTEGRAL SINK. BASIS OF DESIGN: SAMSUNG STARON A1181 SINK, COLOR 'BRIGHT WHITE' BW10. ALSO SEE PLUMBING DRAWINGS.
- 08.01 NEW DOOR. SEE DOOR SCHEDULE FOR MORE INFORMATION. WOOD DOOR AT THE BUILDING HALLWAY SHALL MATCH COLOR AND FINISH OF THE ADJACENT EXISTING WOOD DOORS IN THE HALLWAY. WOOD DOORS INSIDE THE REMODEL SUITE SHALL BE CLEAR MAPLE FINISH.
- 08.03 CARD ACCESS, TYPICAL. SEE ELECTRICAL DRAWINGS.
- 08.04 CARD ACCESS AND AUTOMATED DOOR OPENER. SEE ELECTRICAL DRAWINGS.
- 08.05 PUSH PAD FOR AUTO DOOR ACTIVATION. SEE ELECTRICAL DRAWINGS.
- 08.07 OVERHEAD CONCEALED FULL BREAKOUT TRACKLESS UL 1784 SMOKE RATED NARROW SLIT SINGLE SLIDE ALUMINUM AND GLASS DOOR. BASIS OF DESIGN: ASSA ABLOY VERAMAX ICL1 DOOR SYSTEM. GLAZING TO BE 1/4" CLEAR TEMPERED. SEE DETAIL 8/A601A & 10/A601A.
- 08.08 EXISTING EXTERIOR WINDOWS TO REMAIN. PROTECT DURING CONSTRUCTION. ALUMINUM AND GLASS MANUAL SLIDING WINDOW. BASIS OF DESIGN: C. R. LAURENCE DW 4000 A. TWO PANEL MANUAL DELUXE LOCKABLE SLIDING WINDOW. FINISH: SATIN ANODIZED. SEE SHEET A601A.
- 08.10 INTERIOR WINDOW - SEE SCHEDULE, HM WINDOW FRAME AND GLAZING TO BE 1-HR FIRE RATED.
- 09.04 PARTIAL HEIGHT WALL WITH SOLID SURFACE CAP. SEE WALL TYPE 'P' ON SHEET A501.
- 09.08 3/4" THICK FIRE TREATED PLYWOOD FROM TOP OF BASE TO 7'-0" ABOVE BASE-ALL WALLS. TYPICAL. PAINT PLYWOOD TO MATCH WALL COLOR.
- 09.27 PROVIDE SOLID SURFACE WINDOW SILL AT ALL EXTERIOR WINDOWS TYPICAL. SEE FINISH SCHEDULE AND DETAIL 5/A602A.
- 10.06 GRAB BARS. SEE SPECIFICATIONS. PROVIDE TYPE 1 METAL STUD BACKING PER DETAIL 5/A502A. SEE SHEET G003 FOR MOUNTING HEIGHTS.
- 10.11 METAL LOCKERS. 15" W X 18" D X 2" THICK. 10 LOCKERS. SEE SPECIFICATIONS. SEE DETAIL 6/A506A FOR LOCKER BASE DETAIL.
- 10.18 COFFEE POT, OFCI. SEE ELECTRICAL DRAWINGS.
- 10.19 REFRIGERATOR, OFCI. SEE ELECTRICAL DRAWINGS.
- 11.02 NURSE CHARTING STATION. SEE DETAIL 1/A504A. ALSO SEE DETAIL 13/A502A FOR BACKING REQUIREMENTS. SEE ELECTRICAL DRAWINGS FOR POWER AND DATA.
- 11.03 PATIENT CHAIR/ RECLINER, OFCI.
- 11.05 METAL SHELVING, OFCI.
- 11.06 WALL MOUNTED MONITOR OFCI. SEE ELECTRICAL DRAWINGS. PROVIDE 3'-0" W X 2'-0" H X 18 GA SHEET METAL BACKING.
- 11.07 DIALYSIS HOSE AND SUPPLY BOX. SEE PLUMBING DRAWINGS. VERIFY LOCATION AND HEIGHT WITH OWNER BEFORE INSTALLATION.
- 11.08 TABLE HEMODIALYSIS SYSTEM. PROVIDED AND INSTALLED BY OWNERS VENDOR.
- 11.12 VENDING MACHINE, OFCI. SEE ELECTRICAL DRAWINGS.
- 11.13 ICE AND WATER DISPENSER ON STAND, OFCI. SEE PLUMBING DRAWINGS.
- 11.14 FLUSH MOUNTED IN-FLOOR SCALE, OFCI. CONCRETE FLOOR TO HAVE A 3" RECESS FOR IN-FLOOR SCALE. RECESS TO BE 3'-0" W X 3'-4" D. PROVIDE 10" MINIMUM CLEARANCE FROM BACK WALL AND 6" MINIM CLEARANCE FROM SIDE WALL AS SHOWN. ALSO PROVIDE 3" RECESS FOR CONDUIT CENTERED ON THE RECESSED SLAB IN-FLOOR SCALE. FROM THE FLOOR SCALE TO WALL BEHIND. COORDINATE WITH IN-FLOOR SCALE MANUFACTURER. SEE DETAIL 2/A504A. POUR NEW THICKENED SLAB AFTER REMOVAL OF CONCRETE.
- 11.15 HIGH DENSITY WIRE SHELVING, OFCI.
- 11.16 FLOOR MOUNTED BLANKET WARMER, OFCI. SEE ELECTRICAL DRAWINGS FOR POWER REQUIREMENTS.
- 11.17 LINEN CART, OFCI.
- 11.18 EXAM TABLE, OFCI. SEE ELECTRICAL DRAWINGS FOR POWER REQUIREMENTS. FURNITURE TO BE PROVIDED AND INSTALLED BY OWNERS VENDOR (MIDWEST COMMERCIAL INTERIORS - MWCI).
- 12.02 PRIVACY CURTAIN AND TRACK. SEE FINISH SCHEDULE AND PROJECT MANUAL. SEE DETAIL 13/A503A.
- 12.03 PROVIDE AND INSTALL 1" ALUMINUM BLINDS AT ALL EXTERIOR WINDOWS. TYPICAL THROUGHOUT THE PROJECT. FIELD VERIFY WINDOW SIZE BEFORE INSTALLATION.
- 22.01 FLOOR MOUNTED WATER CLOSET. SEE PLUMBING DRAWINGS.
- 22.02 WALL MOUNTED HAND WASH SINK. SEE PLUMBING DRAWINGS.
- 22.03 MOP SINK. SEE PLUMBING DRAWINGS.
- 22.04 COUNTER MOUNTED STAINLESS STEEL DEEP SINK. SEE PLUMBING DRAWINGS.
- 22.05 COUNTER MOUNTED EYE WASH. SEE PLUMBING DRAWINGS.
- 26.04 WALL MOUNTED PLUG STRIP. SEE ELECTRICAL DRAWINGS.
- 26.06 DOOR RELEASE BUTTON. SEE ELECTRICAL DRAWINGS.
- 26.14 NURSE CALL WITH PULLOW SPEAKER. SEE ELECTRICAL DRAWINGS.
- 26.16 WALL PHONE. SEE ELECTRICAL DRAWINGS.
- 26.17 FLOOR MOUNTED MULTI FUNCTION PRINTER/COPIER. SEE ELECTRICAL DRAWINGS FOR POWER AND DATA.
- 26.19 SEE ELECTRICAL DRAWINGS FOR FLOOR BOX RECESSED IN CONCRETE TO PROVIDE POWER AND DATA CONNECTION TO THE TABLE. COORDINATE WITH OWNERS VENDOR MIDWEST FURNITURE FOR LOCATION OF THE TABLE LEGS TO RUN ELECTRICAL CONNECTIONS TO THE TABLE.

GENERAL NOTES

- A. SEE SHEET G003 AND G005 FOR SYMBOLS, GENERAL NOTES AND LEGEND.
- B. SEE SHEET A505A FOR CABINET LEGEND.
- C. SEE SHEET A601A FOR DOOR SCHEDULE AND WINDOW SCHEDULE.
- E. SEE SHEET A602A FOR FINISH SCHEDULE AND GENERAL NOTES.



Intermountain Healthcare

Tooele Valley Dialysis Clinic Expansion

Northpointe Medical Park, Bldg B
2356 North 400 East, Suite # 102
Tooele, Utah 84074

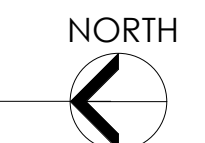
NJRA Project # 19230.00
Construction Documents Feb 4, 2020
6 ASH #9 June 15, 2020

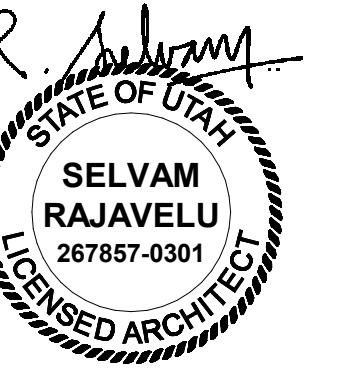
Floor Plan
Level 1

A113

6/10/2020 8:42:51 AM

1 Floor Plan Level 1
SCALE: 1/4" = 1'-0"





DOOR SCHEDULE

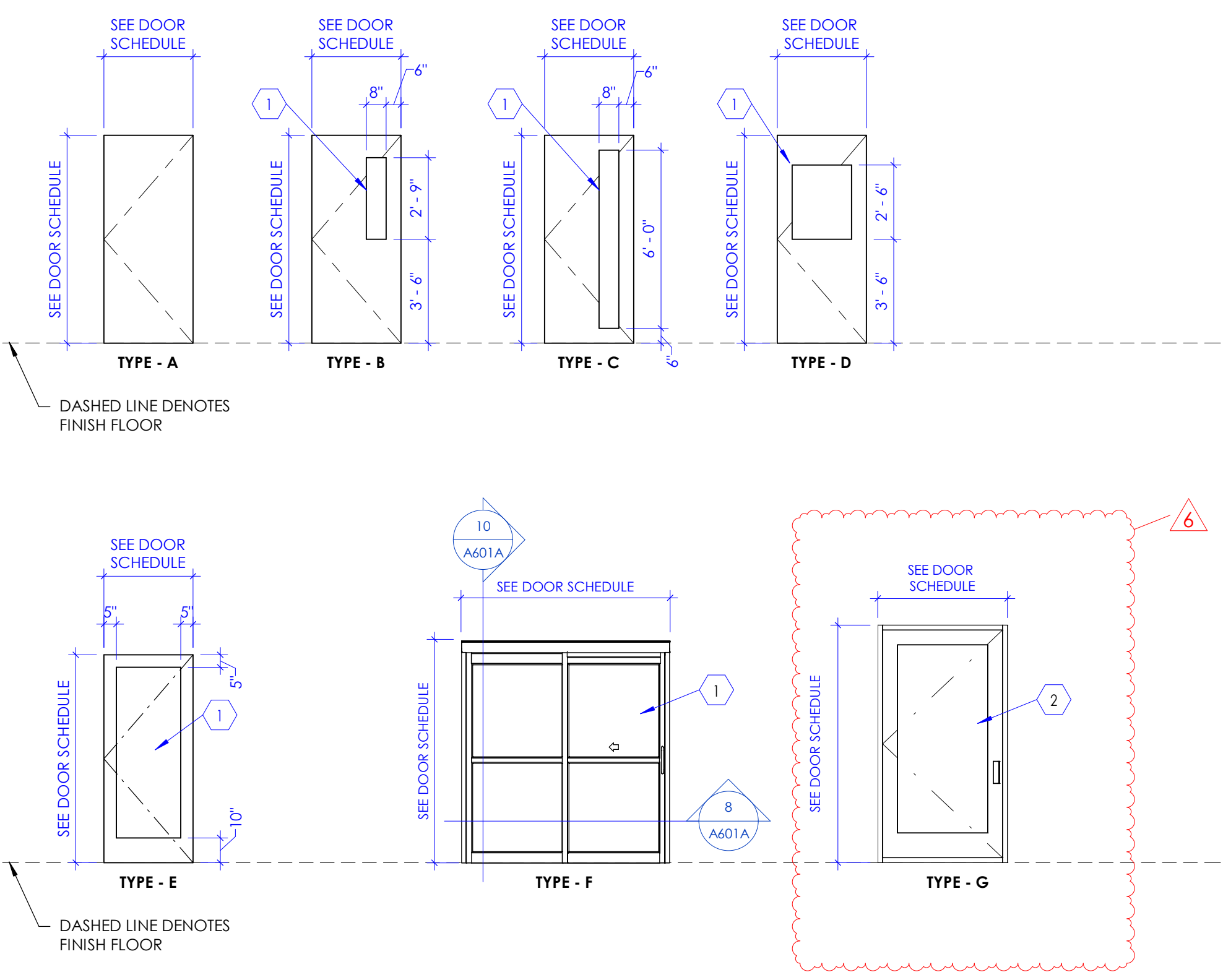
DOOR #	# OF PANELS	WIDTH		HEIGHT		THICKNESS		MATERIAL		TYPE (1/A601A)		FRAME (2/A601A)		DETAILS		DOOR #	FIRE RATING (MINUTES)	HARDWARE GROUP	COMMENTS
		W1	W2	7'-0"	8'-0"	1/4"	1 3/4"	WD	HM	E	W1	7 3/4"	HM	9/A601A	9/A601A				
A101A	1	4'-0"		8'-0"	1 3/4"	HM	E	W1	7 3/4"	HM	9/A601A	9/A601A	A101A	45	1	6			
A101B	1	4'-0"		7'-0"	1 3/4"	WD	E	1	8 1/4"	HM	9/A601A	9/A601A	A101B		2	1,2			
A102	1	3'-0"		7'-0"	1 3/4"	WD	A	1	5 7/8"	HM	9/A601A	9/A601A	A102		11				
A103	1	3'-0"		7'-0"	1 3/4"	WD	A	1	5 7/8"	HM	9/A601A	9/A601A	A103		13				
A104	1	3'-0"		7'-0"	1 3/4"	WD	D	1	5 7/8"	HM	9/A601A	9/A601A	A104		10				
A116	1	4'-0 1/2"		7'-8"	1 3/4"	AL	G	G	4 1/2"	AL			A116						
A123	1	3'-0"		7'-0"	1 3/4"	WD	A	1	5 7/8"	HM	9/A601A	9/A601A	A123		11				
A124	1	3'-0"		7'-0"	1 3/4"	WD	D	1	5 7/8"	HM	9/A601A	9/A601A	A124		7	1			
A126	1	3'-0"		7'-0"	1 3/4"	WD	A	1	5 7/8"	HM	9/A601A	9/A601A	A126		7	1			
A127	1	3'-0"		7'-0"	1 3/4"	WD	A	1	5 7/8"	HM	9/A601A	9/A601A	A127		9				
A128	1	3'-6"		7'-0"	1 3/4"	WD	A	1	5 7/8"	HM	9/A601A	9/A601A	A128		5	1,3			
A129	1	7'-0"		7'-6"	MFR.	AL	F	MFR.	MFR.	AL	8/A601A	10/A601A	A129		12	5			
A130	1	3'-0"		7'-0"	1 3/4"	WD	A	1	5 7/8"	HM	9/A601A	9/A601A	A130		10				
A131	1	4'-0"		7'-0"	1 3/4"	HM	A	1	5 7/8"	HM	9/A601A	9/A601A	A131		4	1			
A132A	1	4'-0"		7'-0"	1 3/4"	HM	A	1	5 7/8"	HM	9/A601A	9/A601A	A132A		6				
A133	2	2'-6"		7'-0"	1 3/4"	WD	A	1	5 7/8"	HM	9/A601A	9/A601A	A133		8				
A134	1	3'-0"		7'-0"	1 3/4"	WD	A	1	5 7/8"	HM	9/A601A	9/A601A	A134		10				
A135	1	3'-0"		7'-0"	1 3/4"	WD	A	1	5 7/8"	HM	9/A601A	9/A601A	A135		9				
A136	1	3'-0"		7'-0"	1 3/4"	WD	A	1	5 7/8"	HM	9/A601A	9/A601A	A136		10				
A137	1	4'-0"		7'-0"	1 3/4"	WD	A	1	5 7/8"	HM	9/A601A	9/A601A	A137		4	1			
A138	1	3'-0"		7'-0"	1 3/4"	WD	A	1	5 7/8"	HM	9/A601A	9/A601A	A138		10				
A139	1	3'-0"		7'-0"	1 3/4"	WD	A	1	5 7/8"	HM	9/A601A	9/A601A	A139		11				
A140	1	3'-0"		7'-0"	1 3/4"	WD	A	1	5 7/8"	HM	9/A601A	9/A601A	A140		9				
A141	1	3'-0"		7'-0"	1 3/4"	WD	A	1	5 7/8"	HM	9/A601A	9/A601A	A141		10				
A142	1	4'-0"		7'-0"	1 3/4"	WD	A	1	7 3/4"	HM	9/A601A	9/A601A	A142		45	3	1,4		

COMMENTS

- NOTES:
- CARD READER REQUIRED AT THIS DOOR.
 - DOOR RELEASE REQUIRED AT THIS DOOR FROM THE NURSE STATION AND SHARED OFFICE.
 - PROVIDE SAFE ZONE CLOSER AT THIS DOOR.
 - PROVIDE AUTO-OPENER AT THIS DOOR.
 - BREAK-OUT SLIDING ALUM. GLASS DOOR. SEE SPECIFICATIONS.
 - 45 MINUTE FIRE RATED HOLLOW METAL DOOR. AND WINDOW FRAME REQUIRED. CONTRACTOR SHALL FIELD VERIFY ADJACENT EXISTING STOREFRONT AT THE BUILDING HALLWAY TO MATCH WITH THE DOOR WINDOW SYSTEM IN APPEARANCE AND COLOR.

KEYED NOTES

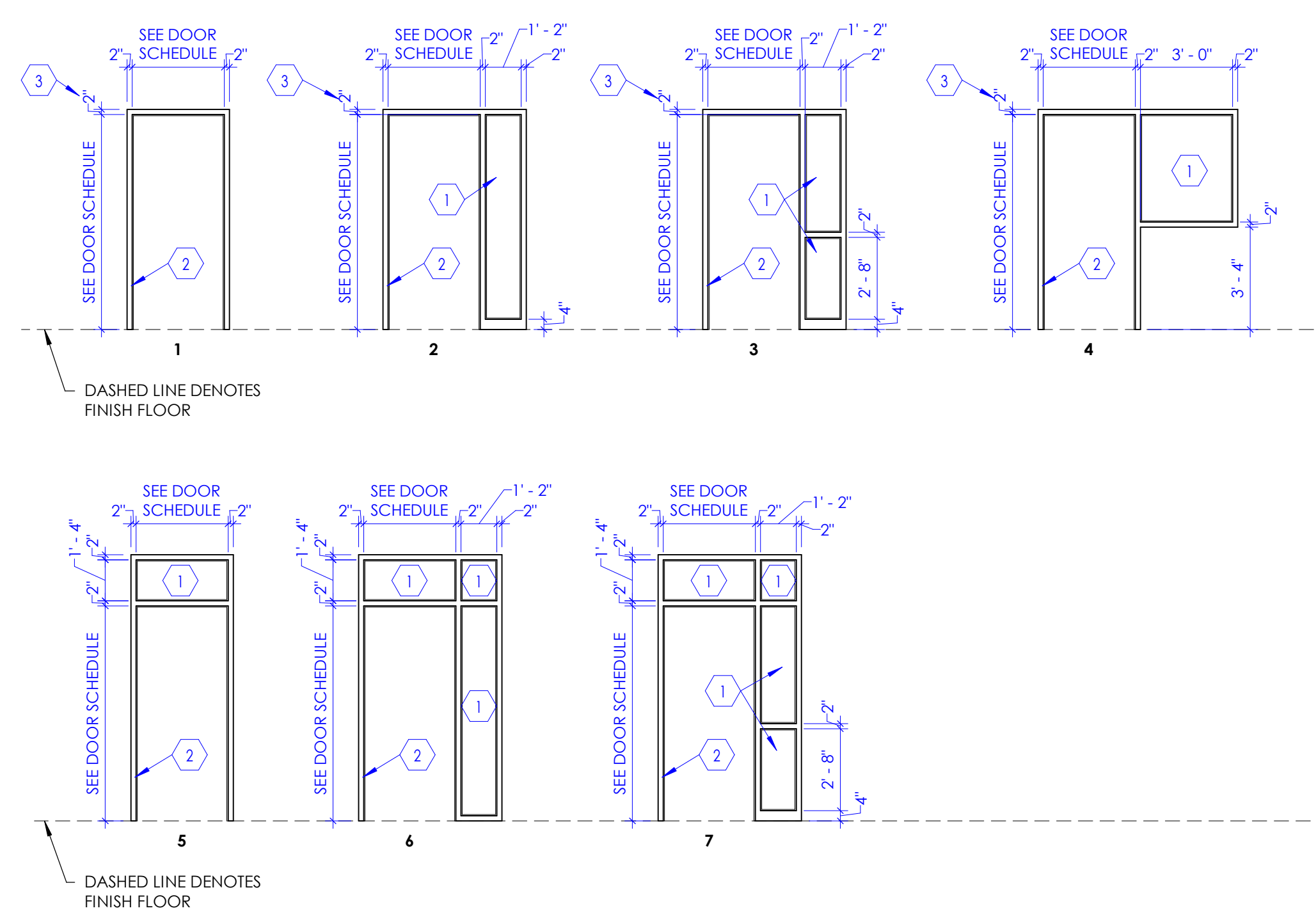
- VISION PANEL, GLAZING IN VISION PANEL SHALL BE 1/4" THICK, CLEAR, TEMPERED, GLAZING. FOR WOOD DOOR, PROVIDE WOOD TRIM FRAME FLUSH WITH THE FACE OF THE DOOR, AROUND THE VISION PANEL OPENING. STAIN AND SPECIES OF WOOD TRIM SHALL MATCH WOOD DOOR. FOR HOLLOW METAL DOOR, PROVIDE METAL TRIM AROUND VISION PANEL. GLAZING SHALL BE FIRE RATED IF DOORS ARE REQUIRED TO BE FIRE RATED.
- FOR EXTERIOR DOORS OF THIS TYPE, GLAZING SHALL BE TINTED, INSULATED, TEMPERED, LOW E, AND 1" THICK. FOR INTERIOR DOORS OF THIS TYPE, GLAZING SHALL BE CLEAR, TEMPERED AND 1/4" THICK.
- STAINLESS STEEL WELDED WIRE MESH (15 GAUGE) ATTACHED TO DOOR. PROVIDE FRAME AROUND THE OPENING IN DOOR TO SECURE THE MESH IN PLACE.
- METAL LOUVER IN DOOR FOR VENTILATION.



1 Door Types NOTE: REFER TO "DOOR SCHEDULE" TABLE FOR DOOR TYPES REQUIRED FOR THIS PROJECT. SOME DOOR TYPE ELEVATIONS INDICATED ABOVE, MAY NOT BE APPLICABLE TO THIS PROJECT.
SCALE: 1/4" = 1'-0"

KEYED NOTES

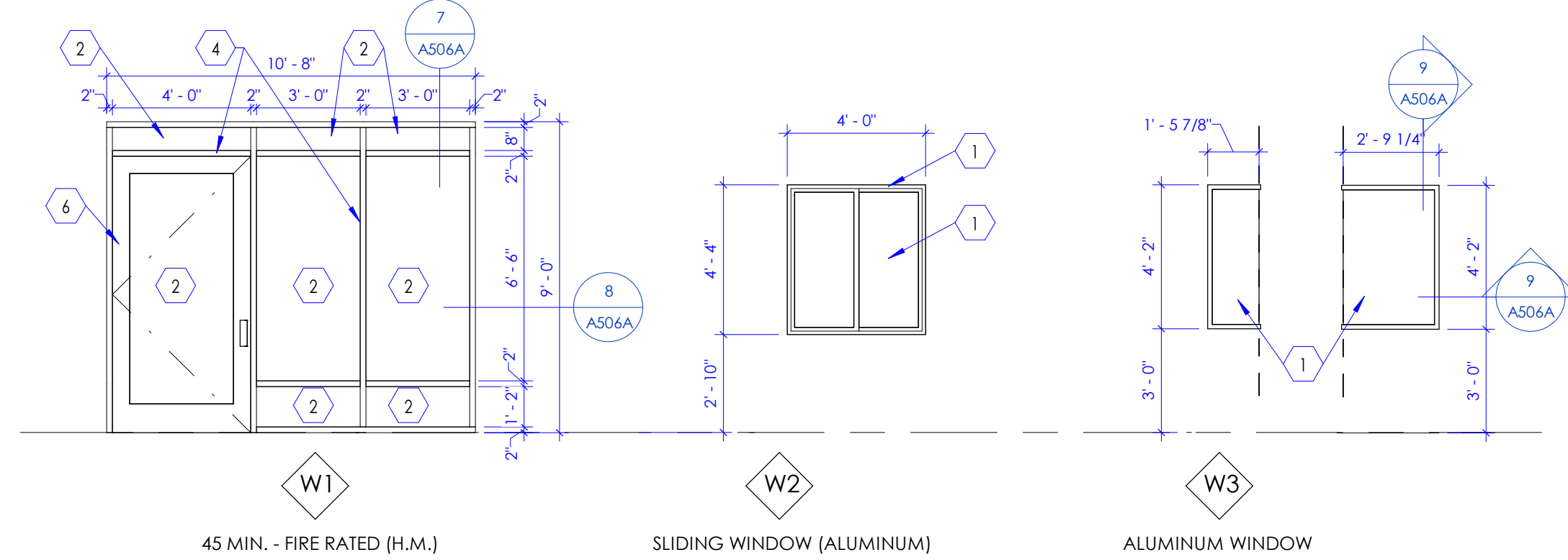
- GLAZING SHALL BE CLEAR, TEMPERED, AND 1/4" THICK.
- DOOR FRAME, SEE DOOR SCHEDULE.
- WHERE DOOR OCCURS AT MASONRY WALL (8" HIGH, C.M.U. BLOCKS), AND WITH A TYPICAL DOOR HEIGHT OF 7'-0", USE 4" FRAME AS FRAME HEAD INSTEAD OF THE STANDARD 2" FRAME.



2 Frame Types NOTE: REFER TO "DOOR SCHEDULE" FOR FRAME TYPES REQUIRED FOR THIS PROJECT. SOME FRAME TYPE ELEVATIONS INDICATED ABOVE MAY NOT BE APPLICABLE TO THIS PROJECT.
SCALE: 1/4" = 1'-0"

KEYED NOTES

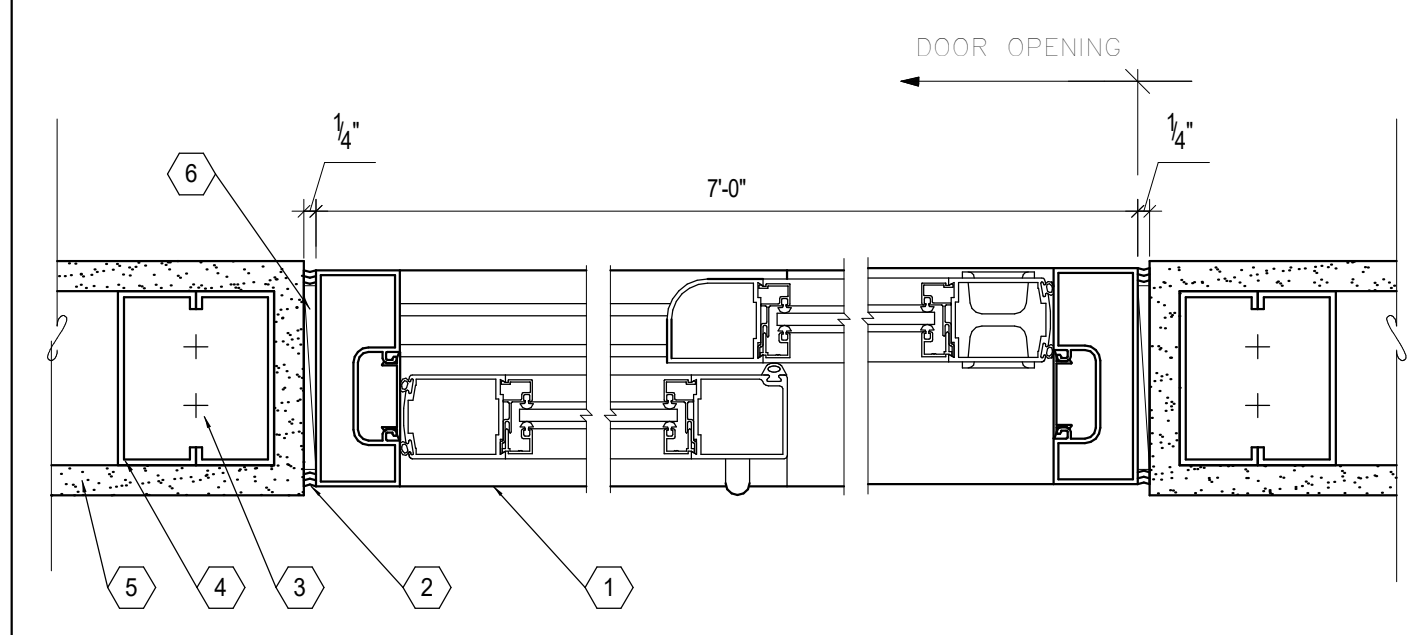
- GLAZING SHALL BE CLEAR, TEMPERED, AND 1/4" THICK.
- 45 MINUTE FIRE RATED GLAZING REQUIRED AT THIS DOOR WINDOW SYSTEM.
- MITER GLASS AT CORNER.
- 45 MINUTE FIRE RATED HOLLOW METAL DOOR WINDOW FRAME SYSTEM, COLOR TO MATCH ADJACENT EXISTING.
- ALUMINUM AND GLASS MANUAL SLIDING WINDOW, CR LAWRENCE DW 4200 A TWO PANEL MANUAL DELUXE LOCKABLE SLIDING WINDOW, FINISH: SATIN ANODIZED.
- 45 MINUTE FIRE RATED HOLLOW METAL GLAZED DOOR.



3 Window Legend SCALE: 1/4" = 1'-0"

KEYED NOTES

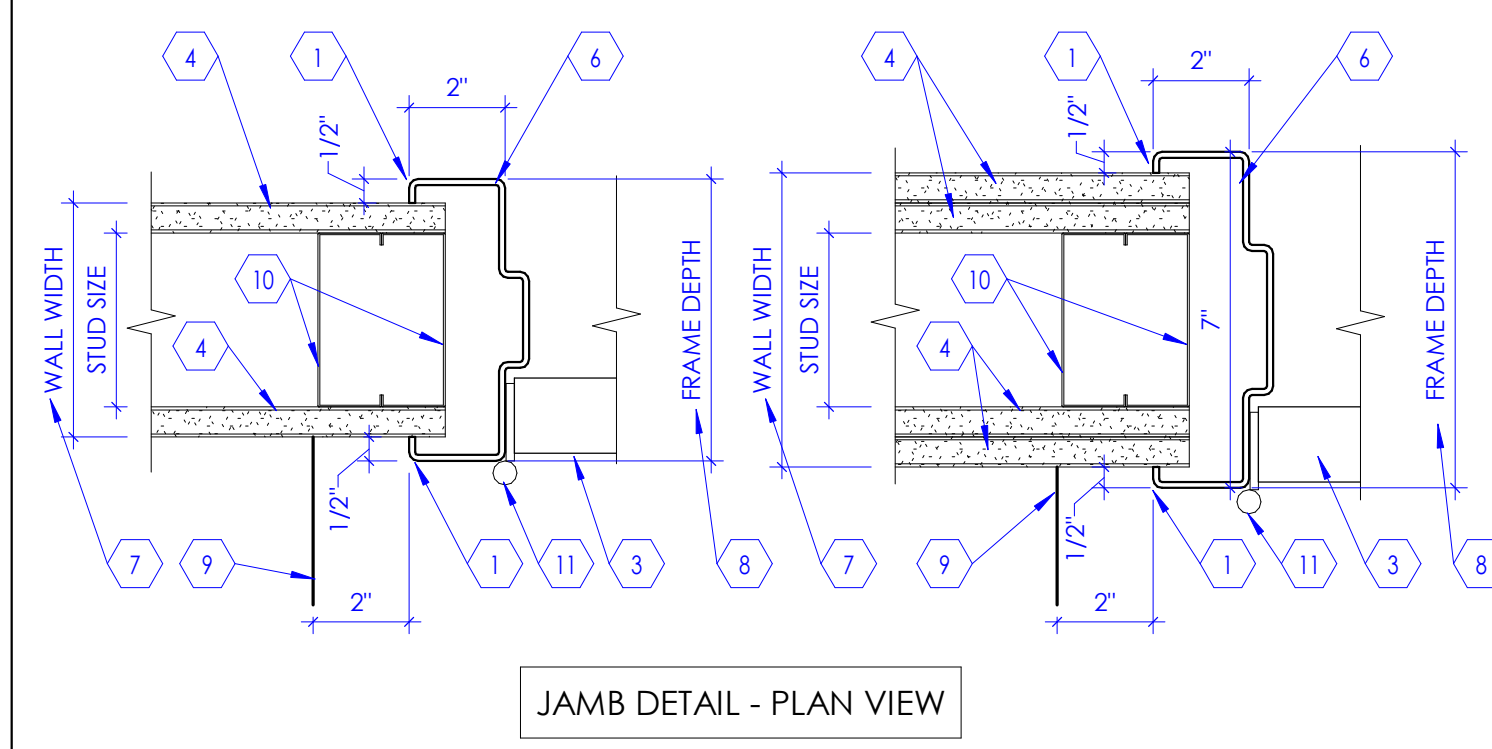
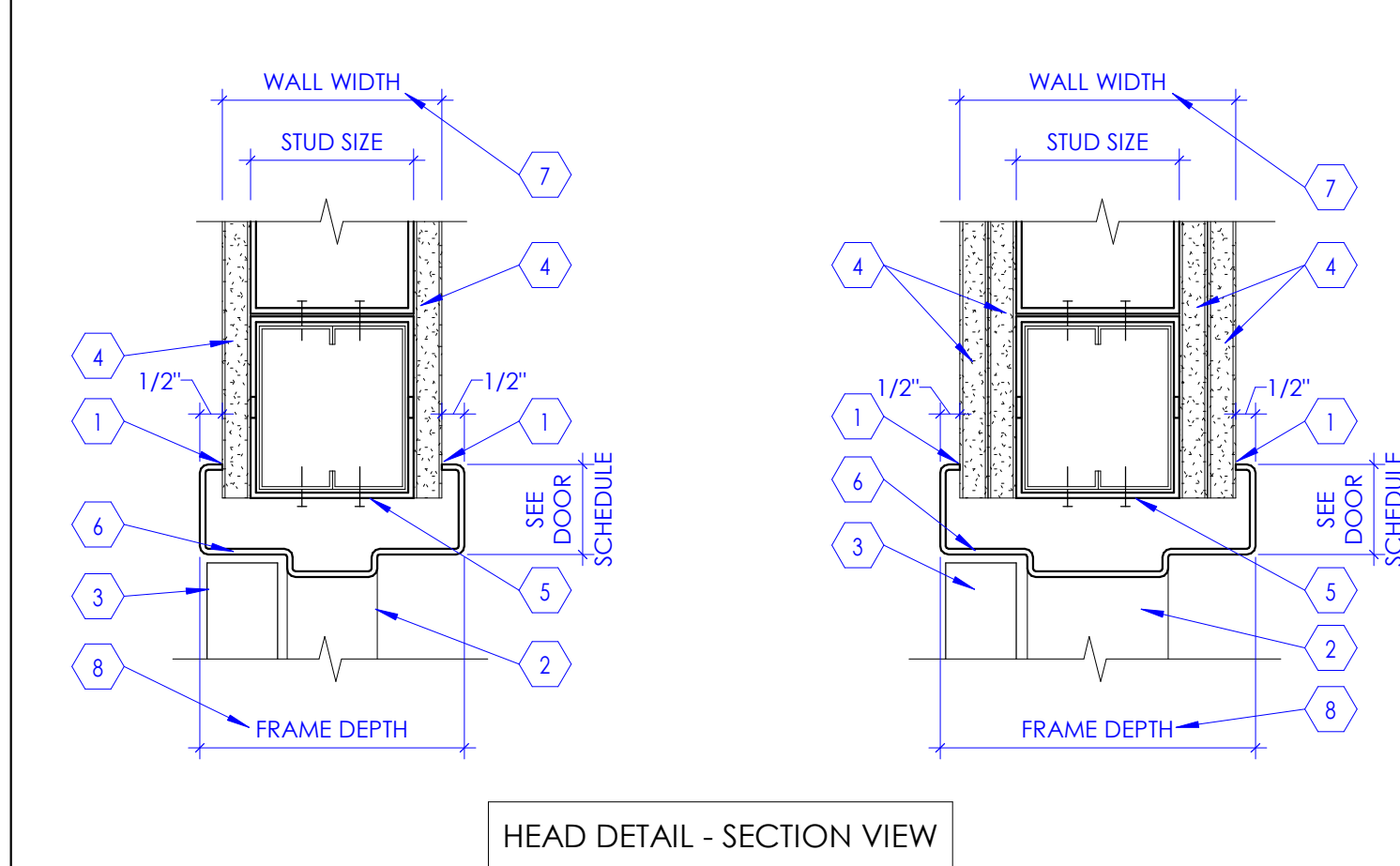
- PRE MANUFACTURED ALUMINUM AND GLASS SLIDING DOOR. SEE PROJECT MANUAL FOR DETAILS.
- PROVIDE CLEAR SILICON SEALANT ALL AROUND DOOR FRAME. BOTH SIDES OF DOOR.
- (2) TYP. TRACK PINS AT DECK ABOVE AND FLOOR SLAB BELOW.
- DOUBLE METAL STUDS, SEAM WELD AT 12" O.C. TYP. USE 16 GA STUDS.
- 5/8" THICK TYPE 'X' GYP. BD. ALL AROUND.
- 1/4" SHIM SPACE AT EACH JAMB.



8 Manual Sliding Breakout Door at Isolation Rooms SCALE: 3" = 1'-0"

KEYED NOTES

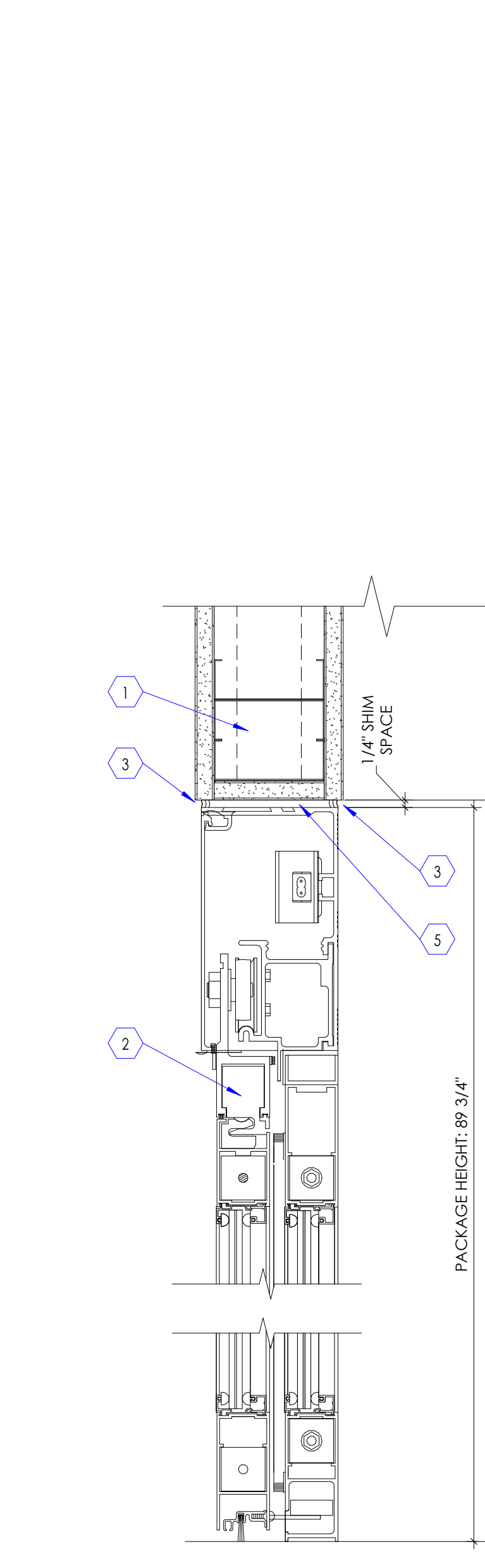
- CONTINUOUS SEALANT ON BOTH SIDES OF THE FRAME.
- DOOR FRAME SEEN BEYOND.
- DOOR. SEE DOOR SCHEDULE FOR DOOR TYPE.
- GYP. BOARD, 5/8" THICK, TYPE 'X', ATTACH TO METAL STUD FRAMING. SEE WALL TYPES.
- STEEL RUNNER (18 GAUGE) FASTENED WITH SCREWS TO STRUT STUDS AT EACH END. SEE DETAIL 6/A502A.
- HOLLOW METAL DOOR FRAME. FRAME THICKNESS VARIES WITH WALL THICKNESS. SEE FLOOR PLAN AND WALL SECTIONS. PAINT FRAME.
- SEE WALL TYPES FOR WALL WIDTH AND STUD SIZE.
- FRAME DEPTH SHALL BE WALL WIDTH PLUS 1".
- LINE OF WALL, AS OCCURS.
- PROVIDE DOUBLE METAL STUDS AT FRAME JAMBS, WALL ENDS, ETC. PROVIDE STEEL STRIPS (6" HIGH 1/4 GAUGE STRIPS AT 2'-0" O.C.) SEE DETAIL 7/A502A.
- DOOR HINGE AS OCCURS. SEE DOOR AND HARDWARE SCHEDULE. SEE FLOOR PLAN FOR DOOR SWING.



9 Door Frame in Stud Wall SCALE: 3" = 1'-0"

KEYED NOTES

- SEE DETAIL 6/A502A FOR FRAMING AT DOOR HEADER.
- MANUAL SLIDING DOOR ALUMINUM AND GLASS DOOR AS SCHEDULED.
- PROVIDE CLEAR SILICON CAULKING ALL AROUND DOOR. BOTH SIDES.
- GYP. BD. SOFFIT AS SCHEDULED.
- SHIM AS REQUIRED.



10 Sliding Door Head Detail SCALE: 3" = 1'-0"