

SELECT HEALTH - VCT 2ND FLOOR REMODEL 2022

INTERMOUNTAIN HEALTHCARE
VALLEY CENTER TOWER - 5373 SOUTH GREEN STREET, MURRAY, UTAH



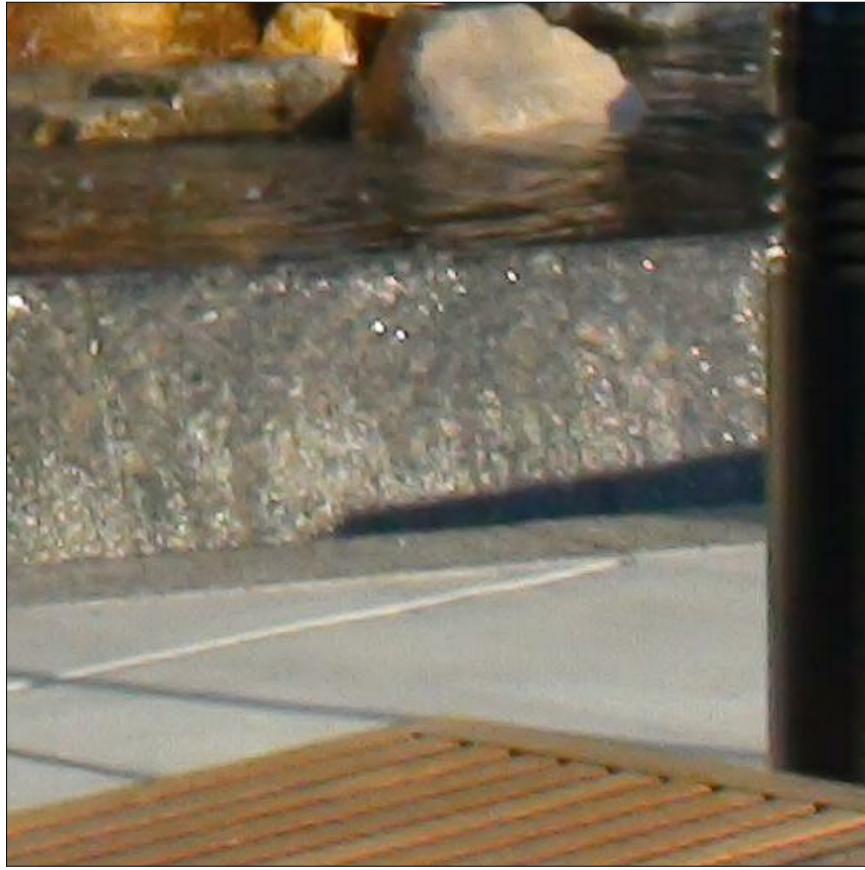
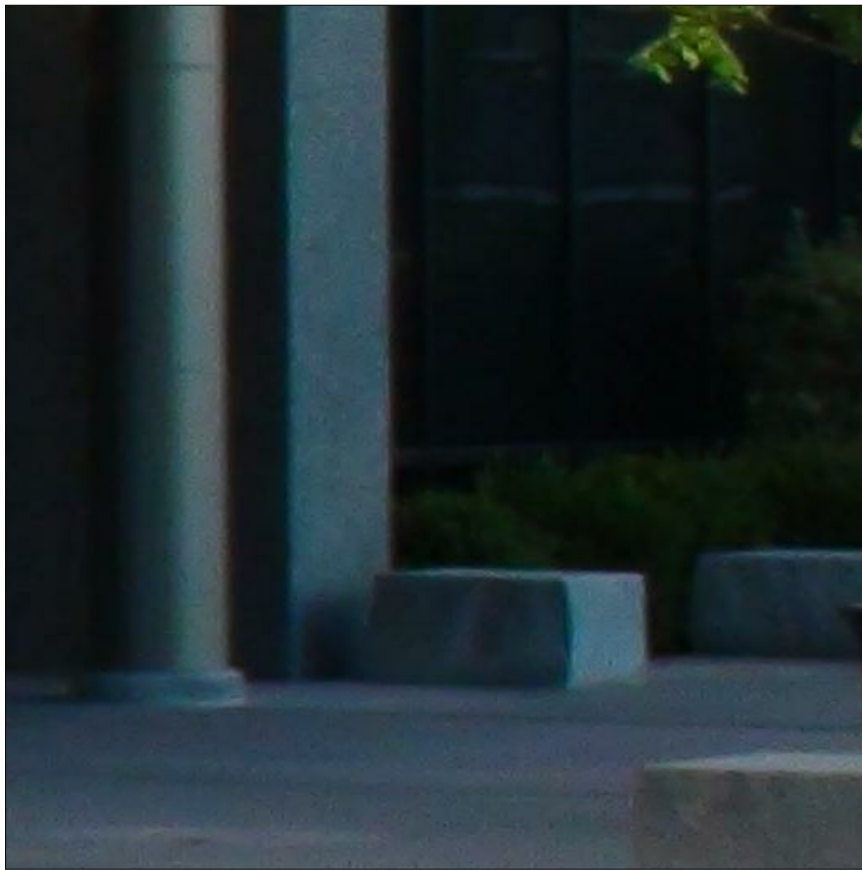
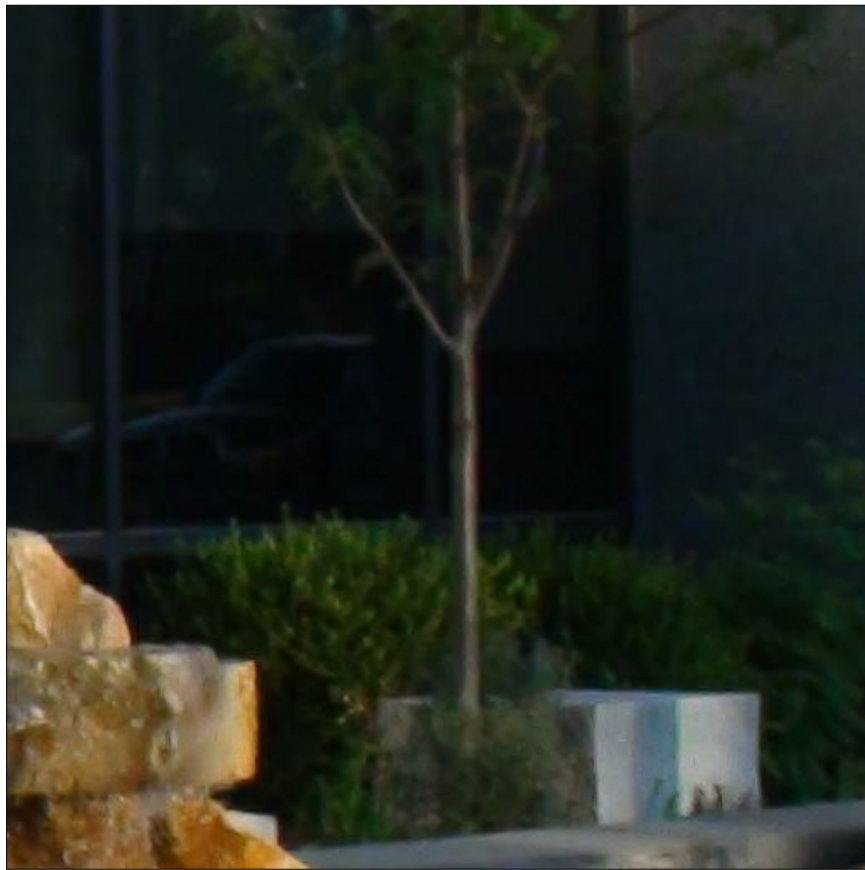
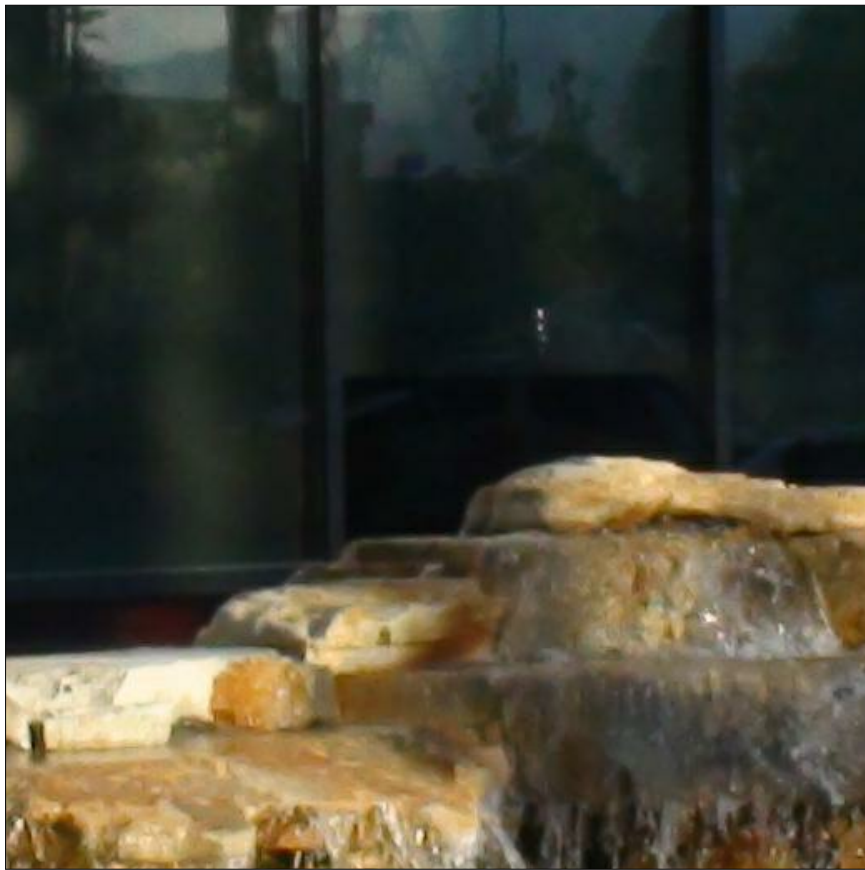
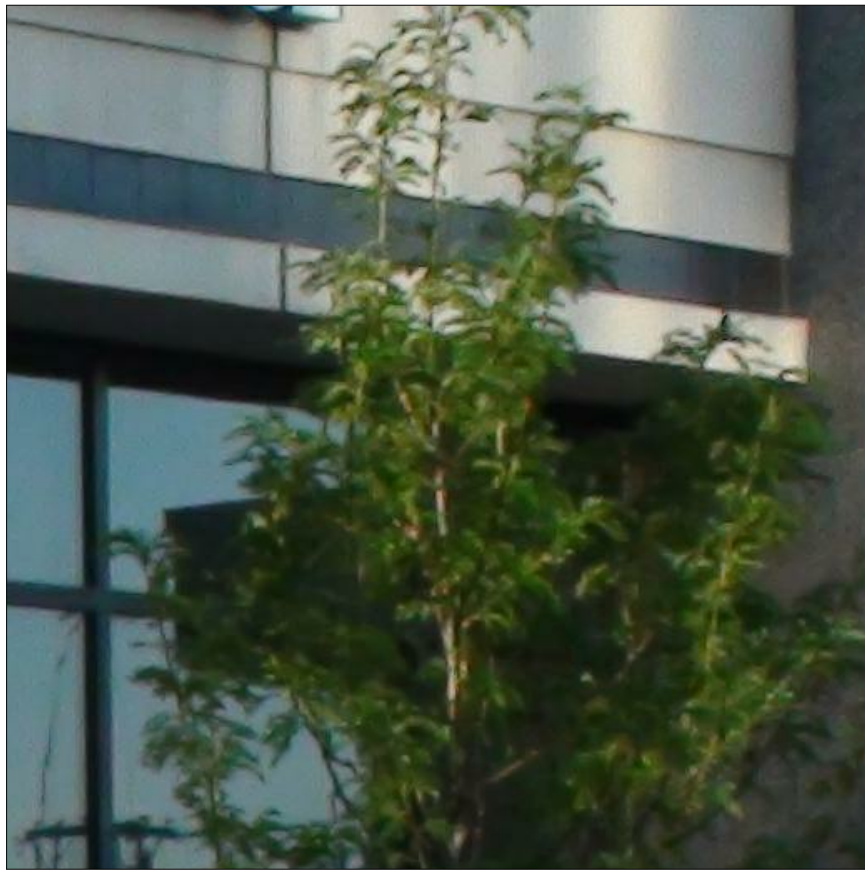
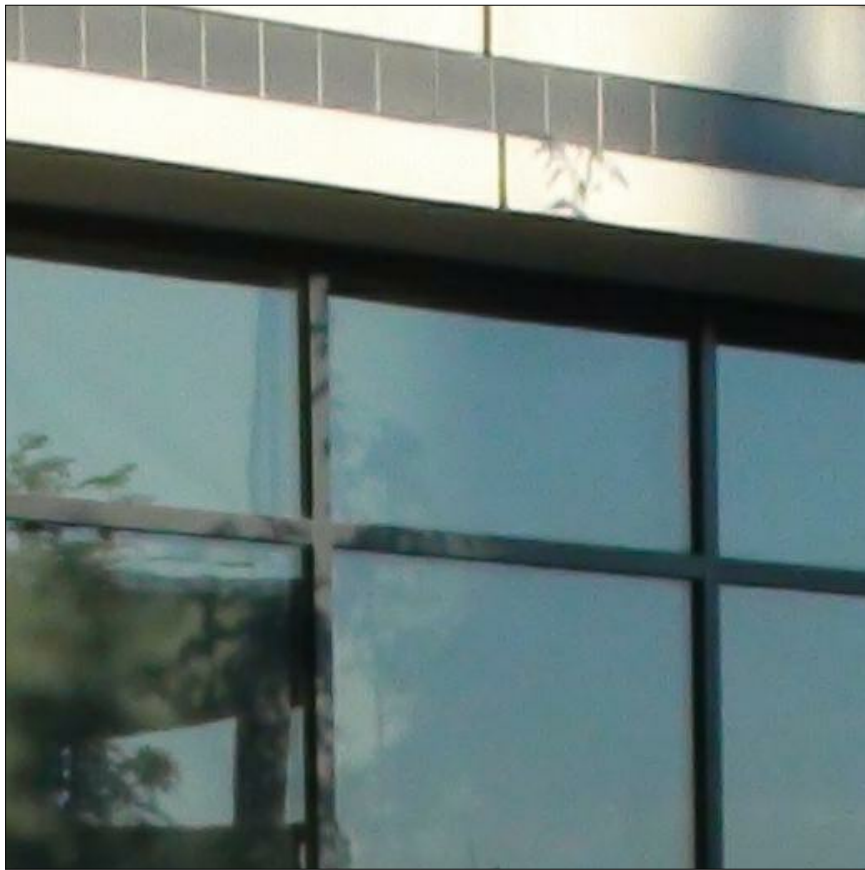
524 SOUTH 600 EAST
SALT LAKE CITY, UT 84102
801.575.8800 | VCBO.COM

owner
STEVE ROSE
INTERMOUNTAIN HEALTH CARE
38 SOUTH STATE STREET, SUITE 2300
MURRAY, UTAH 84111
steve.rose@mail.org
801.442.2861

architect
TODD BRAUN, AIA
VCBO ARCHITECTURE
524 SOUTH 600 EAST
SALT LAKE CITY, UT 84102
tbraun@vcbo.com
801.575.8800

mechanical engineer
JOSH ELLIOTT
PVE INC.
1040 NORTH 2200 WEST SUITE 100
SALT LAKE CITY, UTAH 84116
jelliott@pve-ut.com
801.359.3158

electrical engineer
TYLER SQUIRE
SPECTRUM ENGINEERS
324 SOUTH STATE ST. #400
SALT LAKE CITY, UTAH 84111
tds@spectrum-engineers.com
801.328.5151



1/14/2022 3:06:47 PM 20205 SELECT HEALTH - VCT 2ND FLOOR REMODEL 2022 CONSTRUCTION DOCUMENTS

REV	DATE	DESCRIPTION
-----	------	-------------

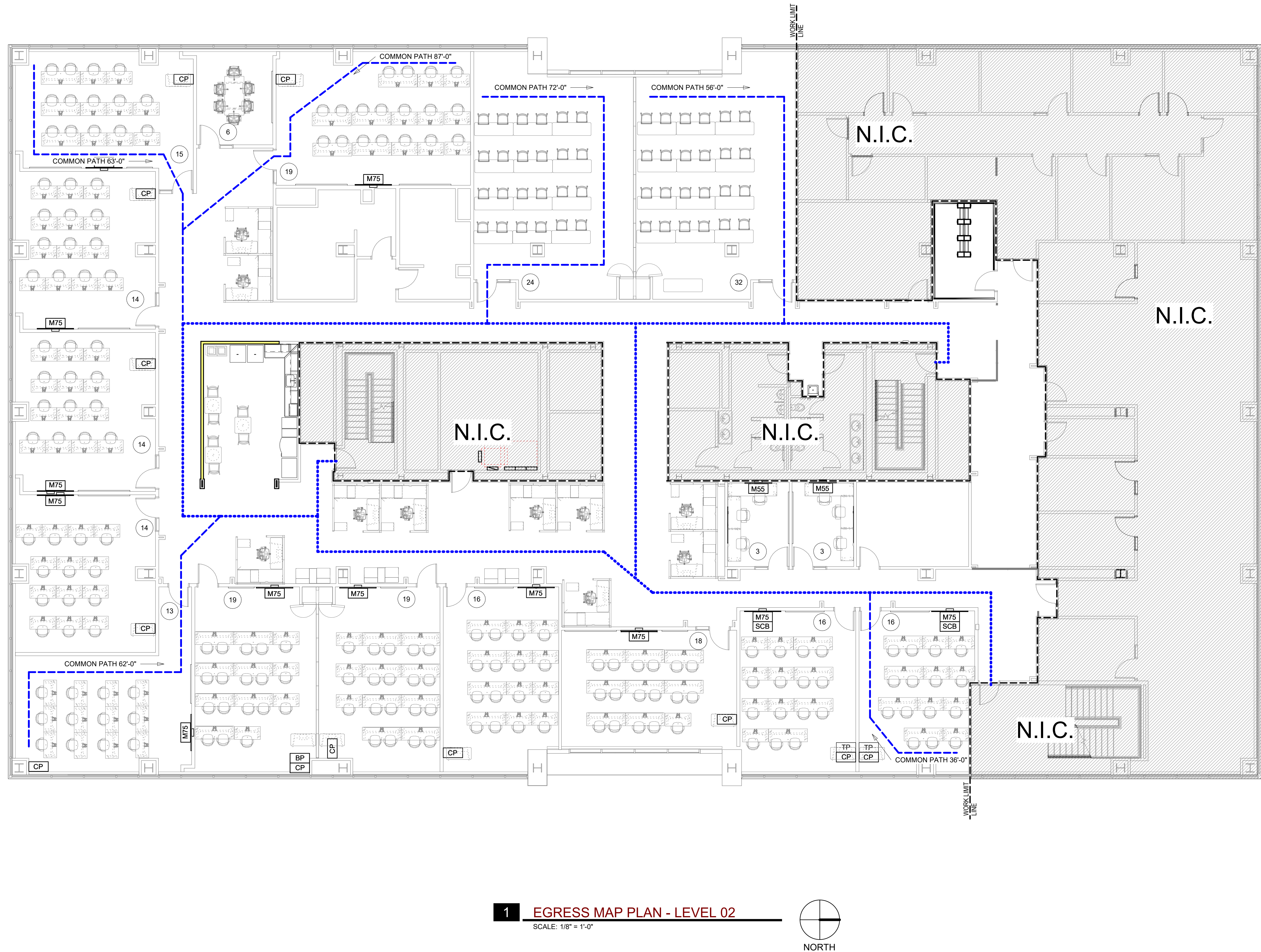
VCBO NUMBER: 20235
CLIENT NUMBER: 00000
DATE: 1-14-2022

SELECT HEALTH - VCT 2ND FLOOR REMODEL 2022

INTERMOUNTAIN HEALTHCARE
VALLEY CENTER TOWER - 5373 SOUTH GREEN STREET,
MURRAY, UTAH
CONSTRUCTION DOCUMENTS

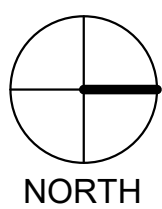
EGRESS PLAN - LEVEL
02

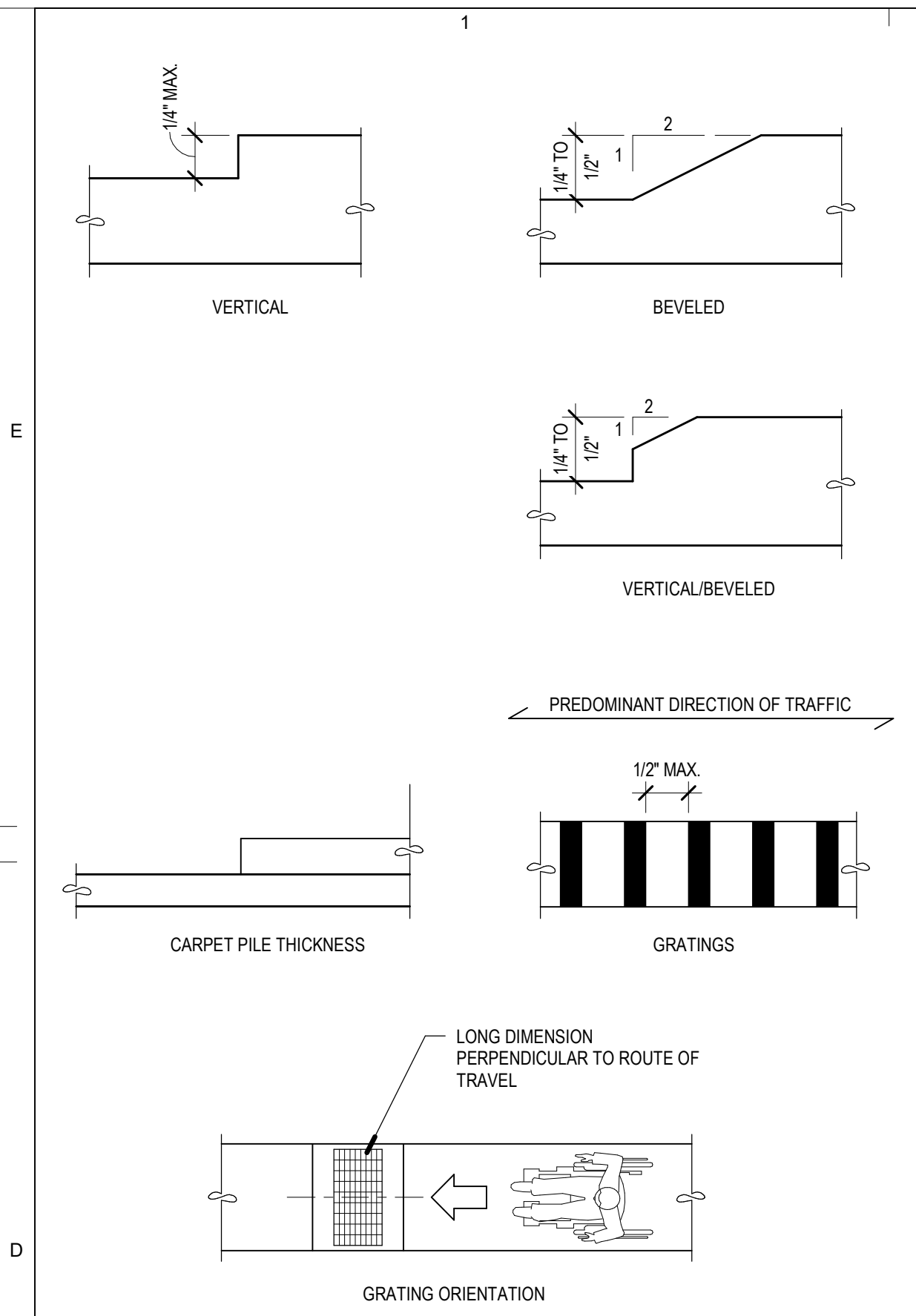
G120



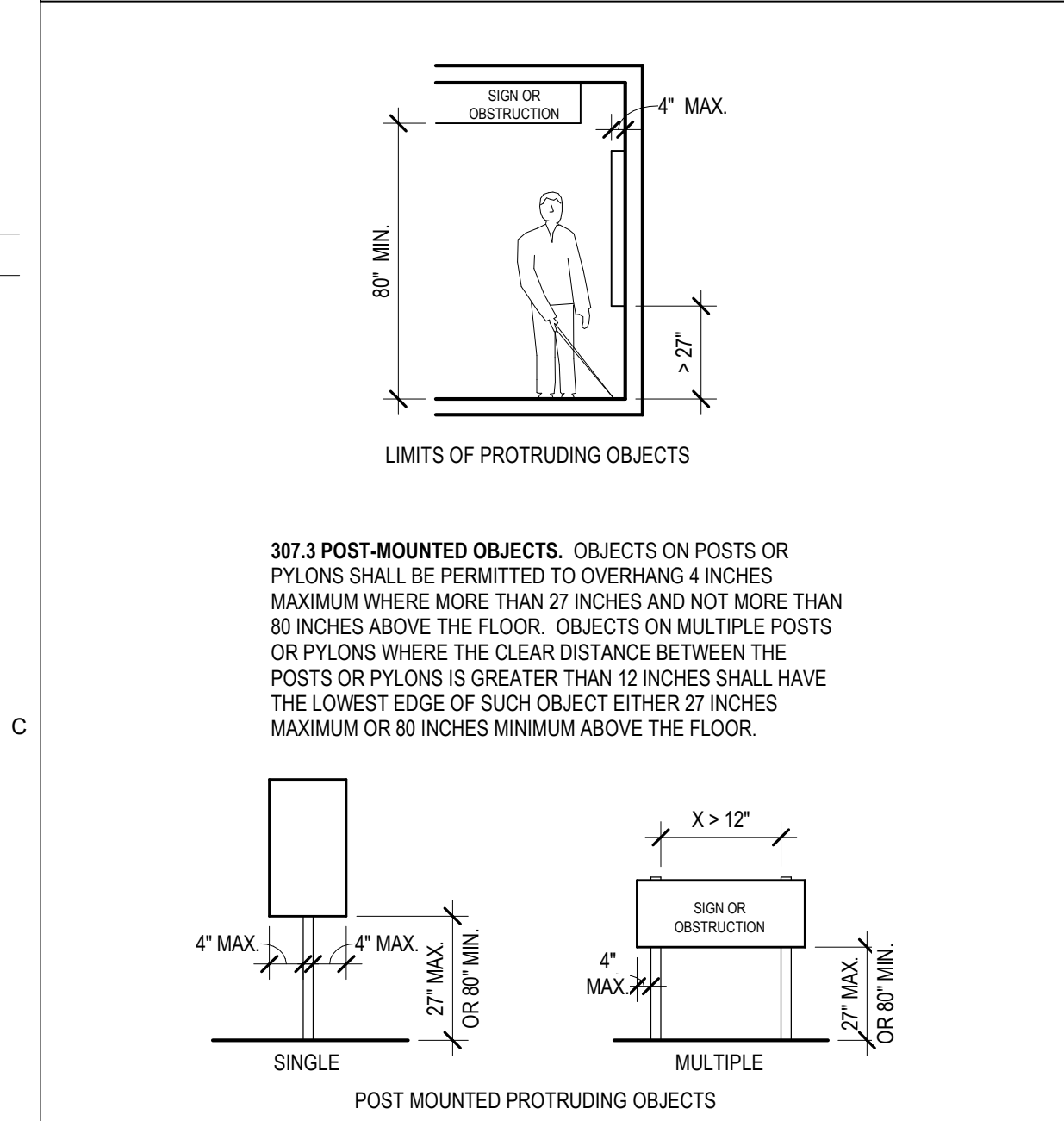
1 EGRESS MAP PLAN - LEVEL 02

SCALE: 1/8" = 1'-0"

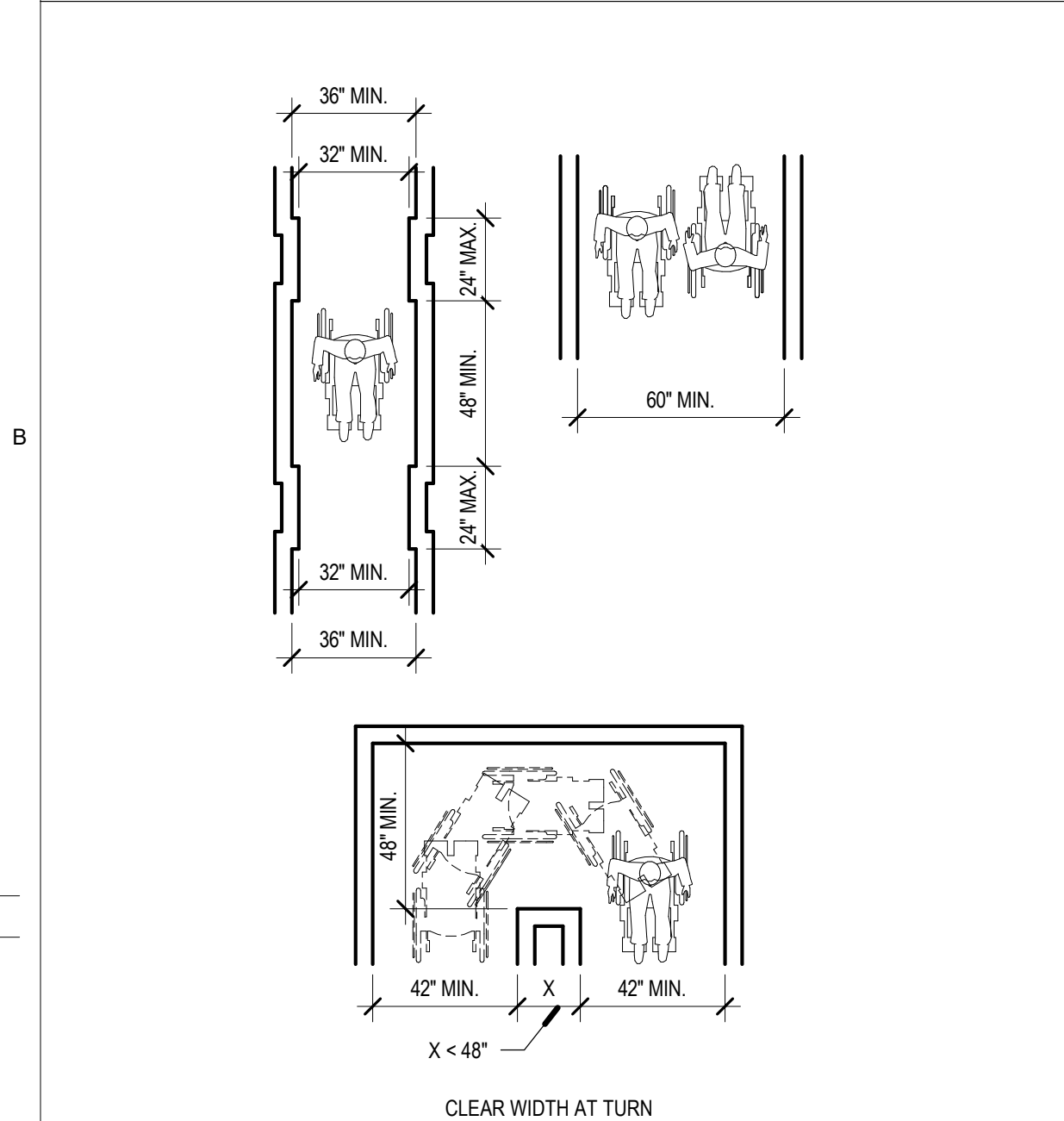




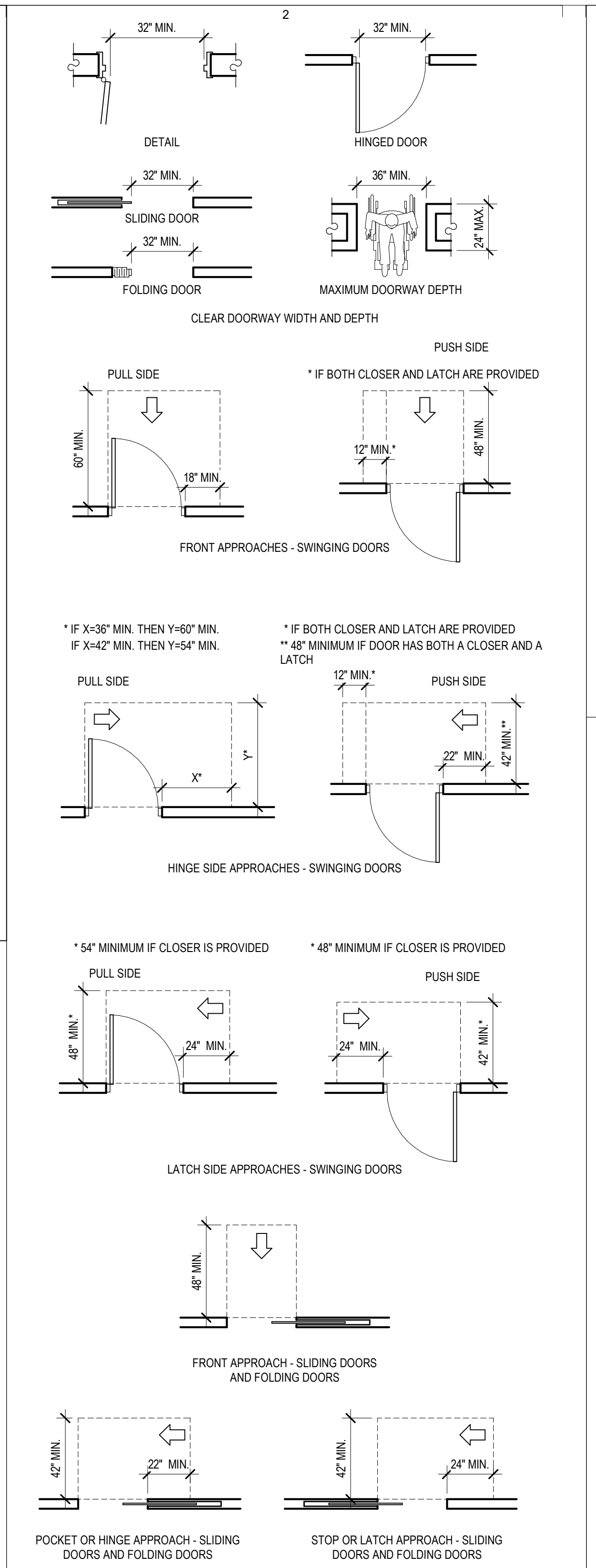
303. CHANGES IN LEVEL



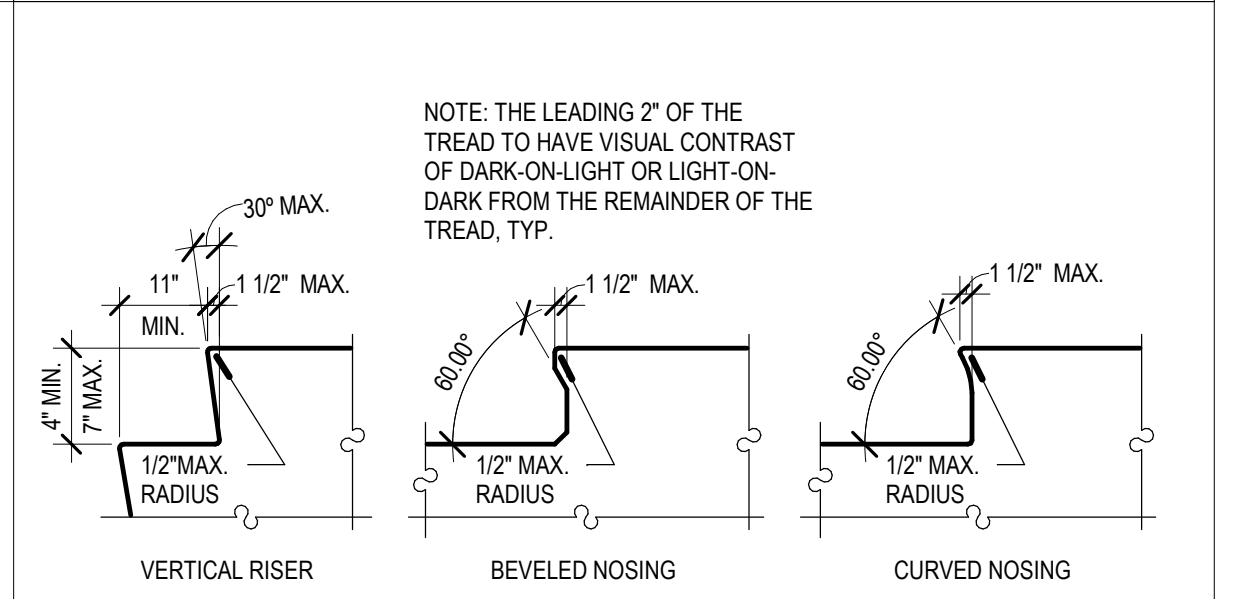
307. PROTRUDING OBJECTS



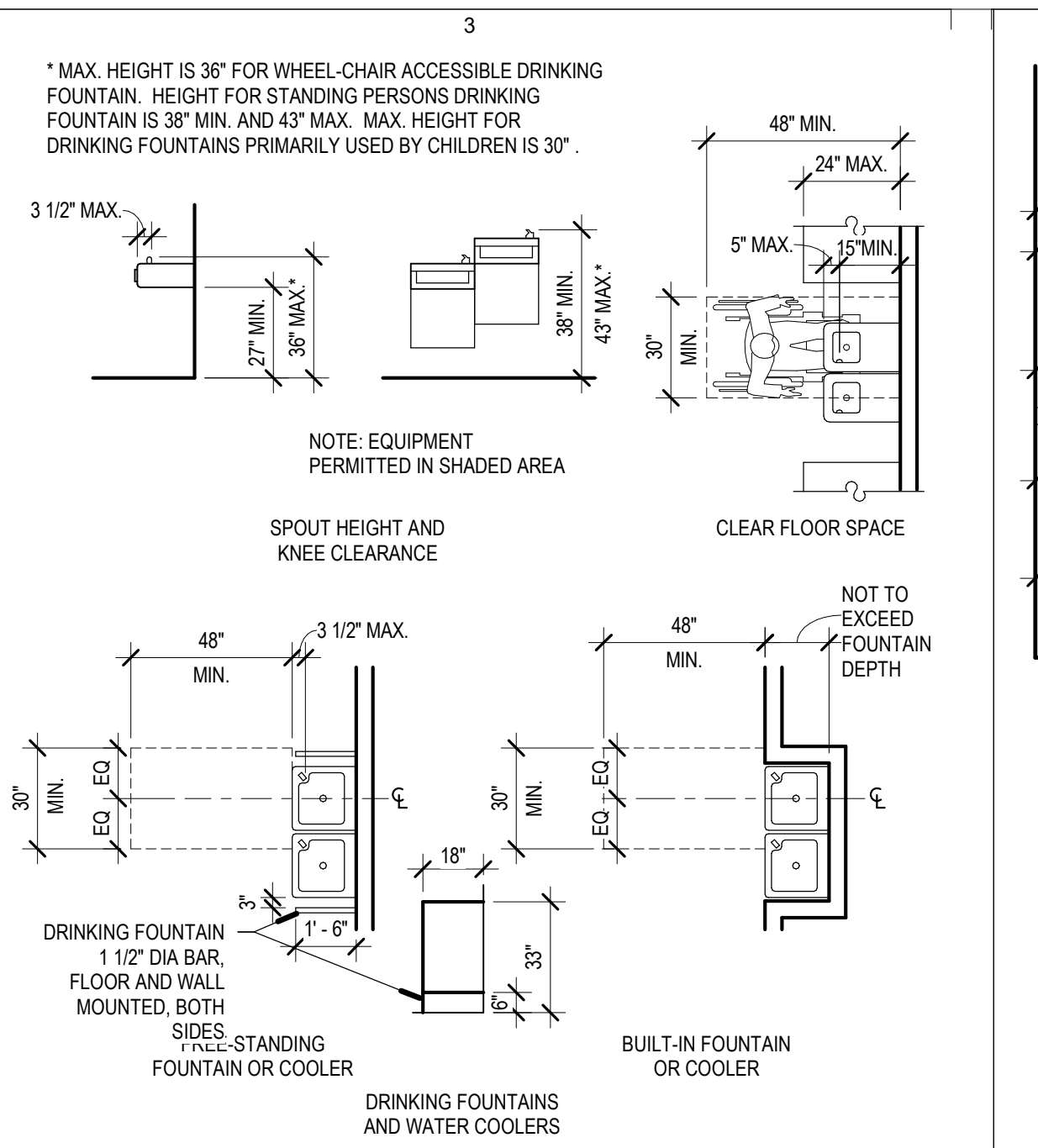
403. ACCESSIBLE ROUTES



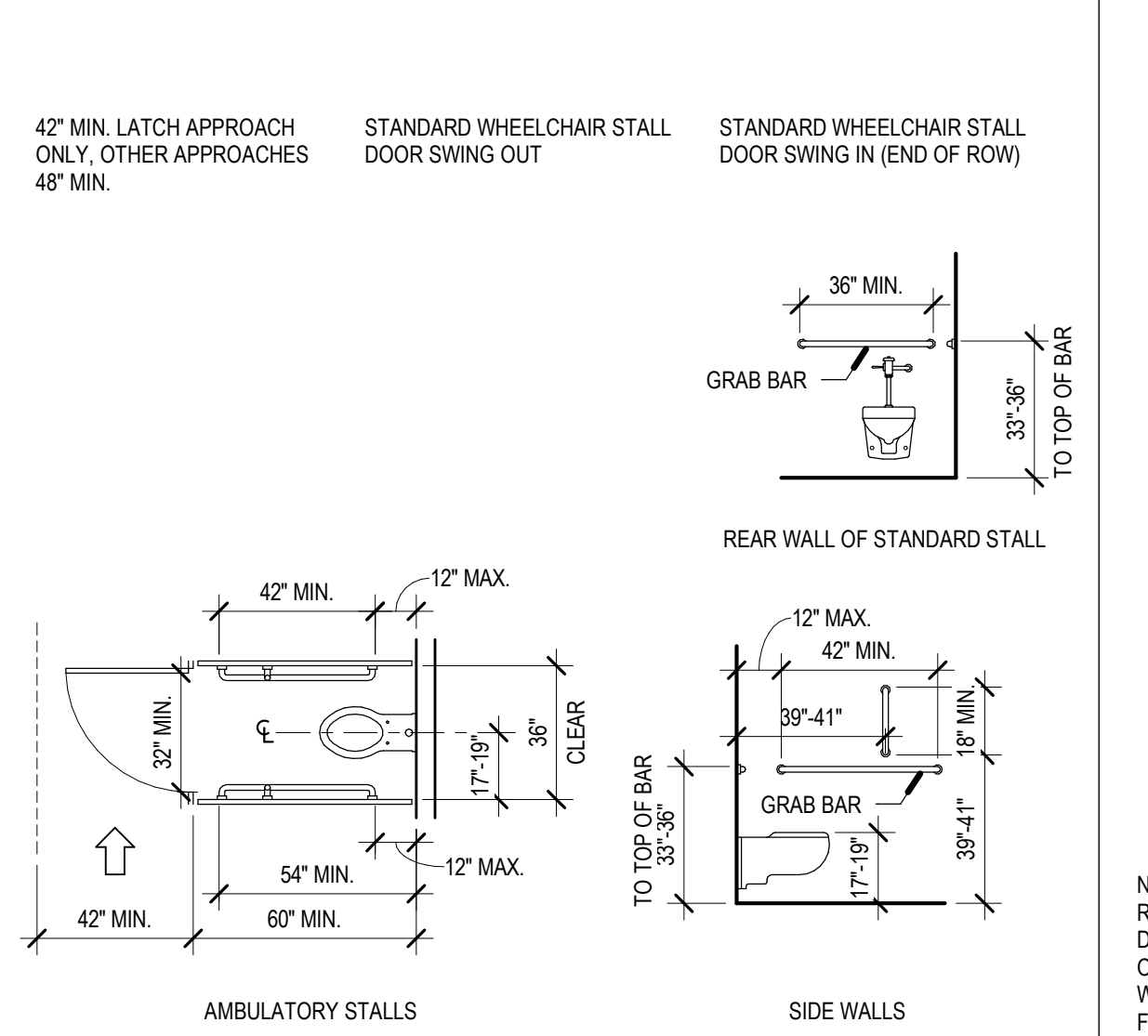
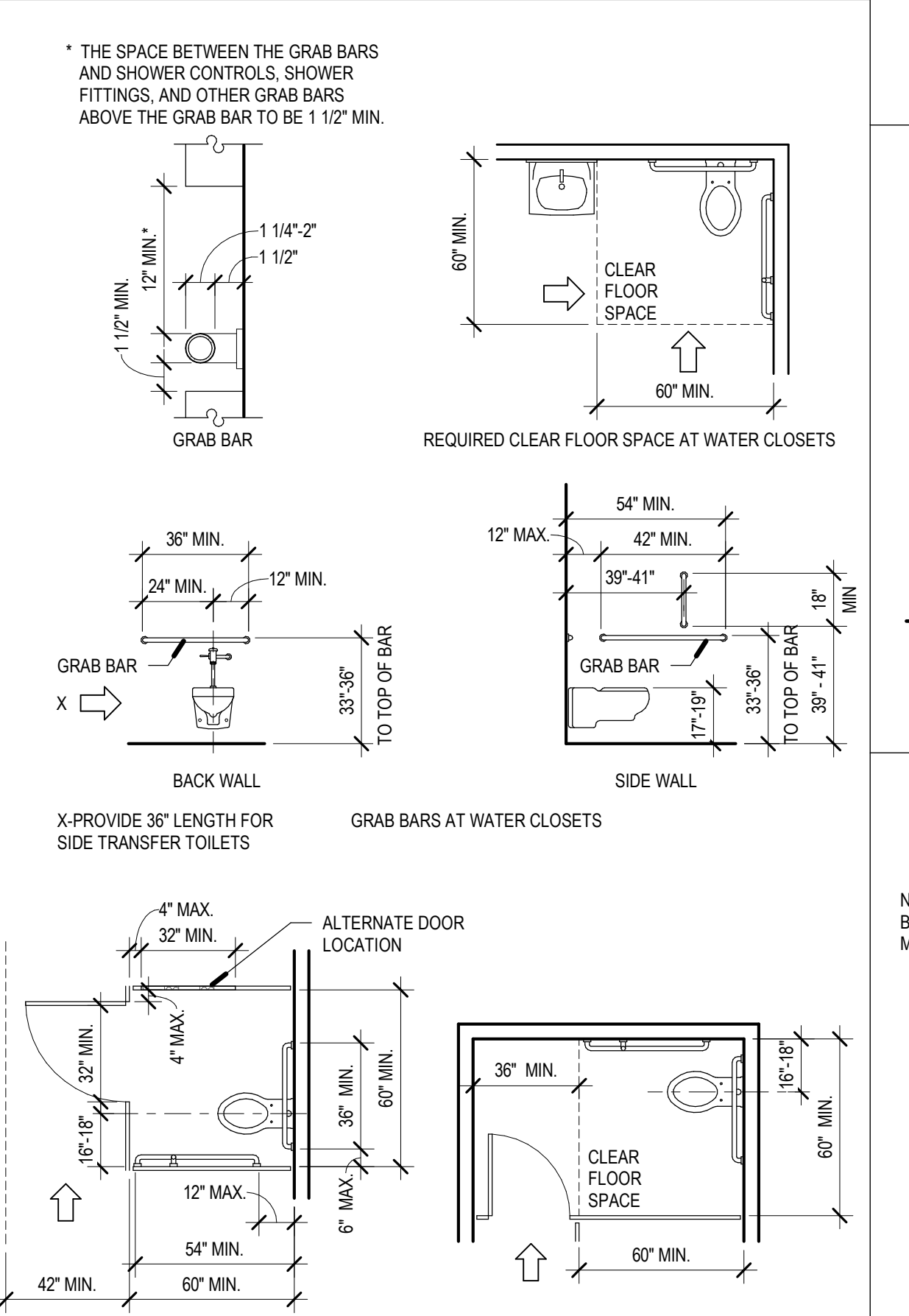
404. DOORS AND DOORWAYS



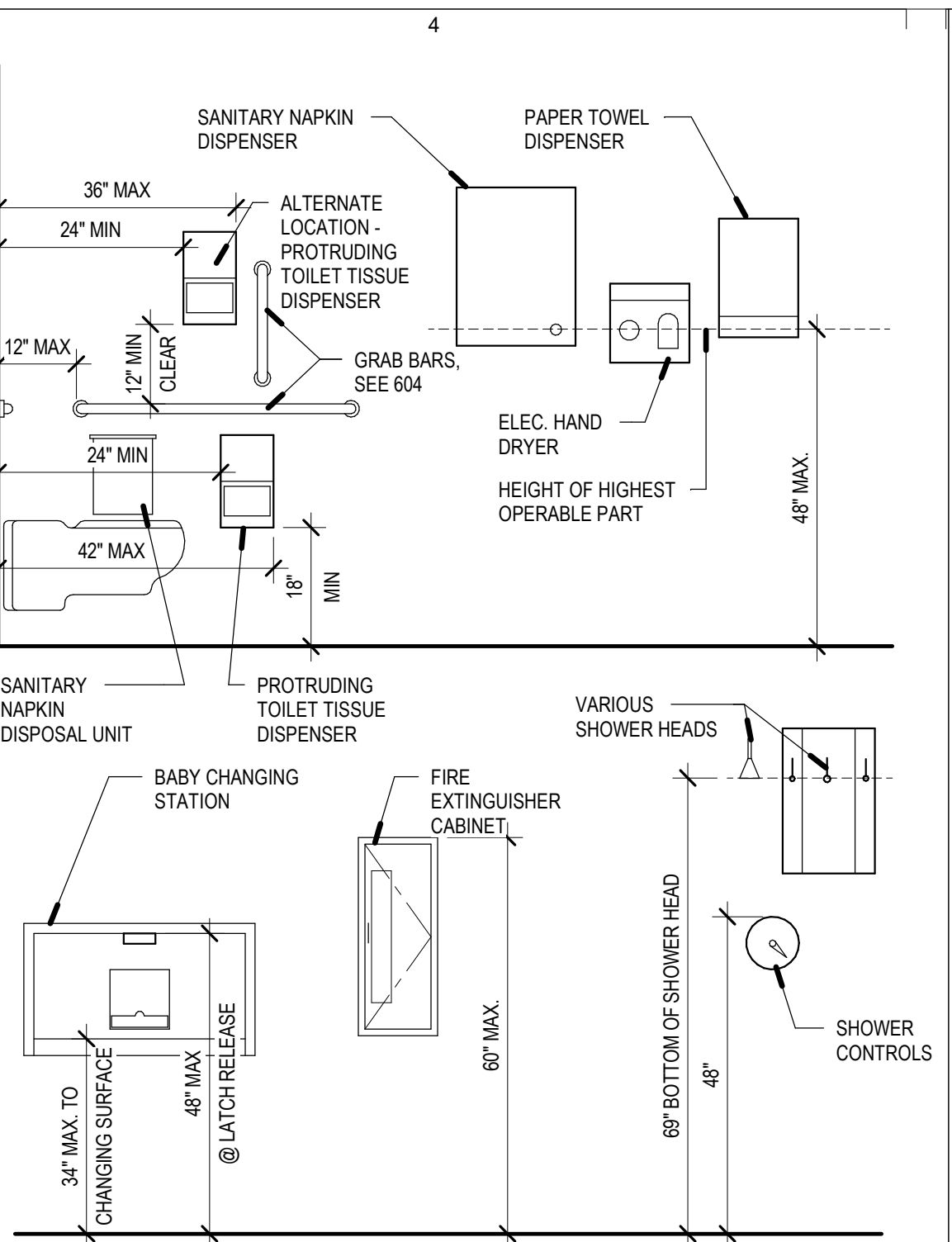
504.5 STAIR NOSINGS



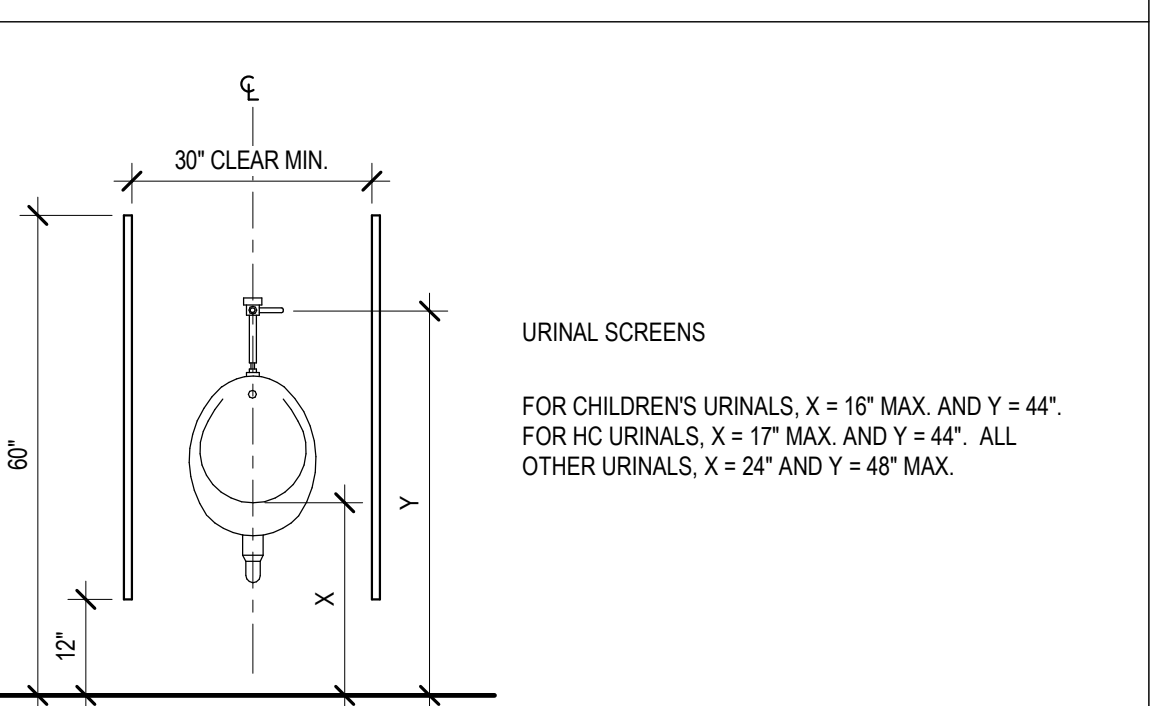
602. DRINKING FOUNTAINS



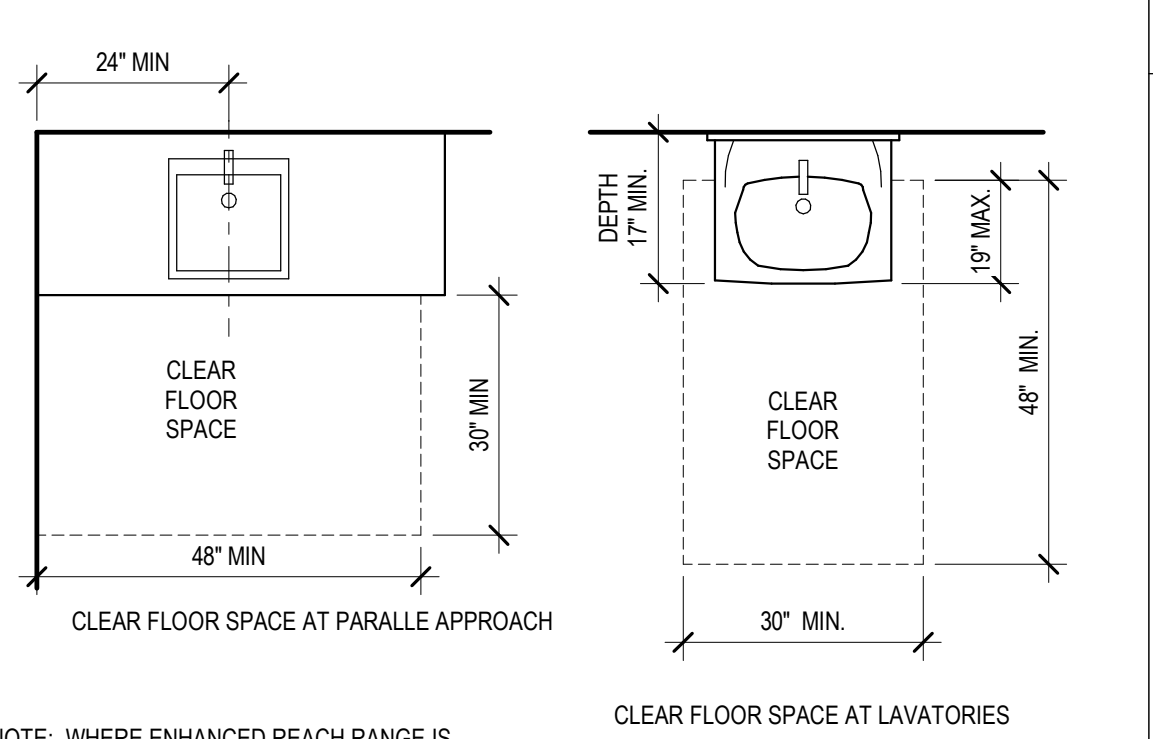
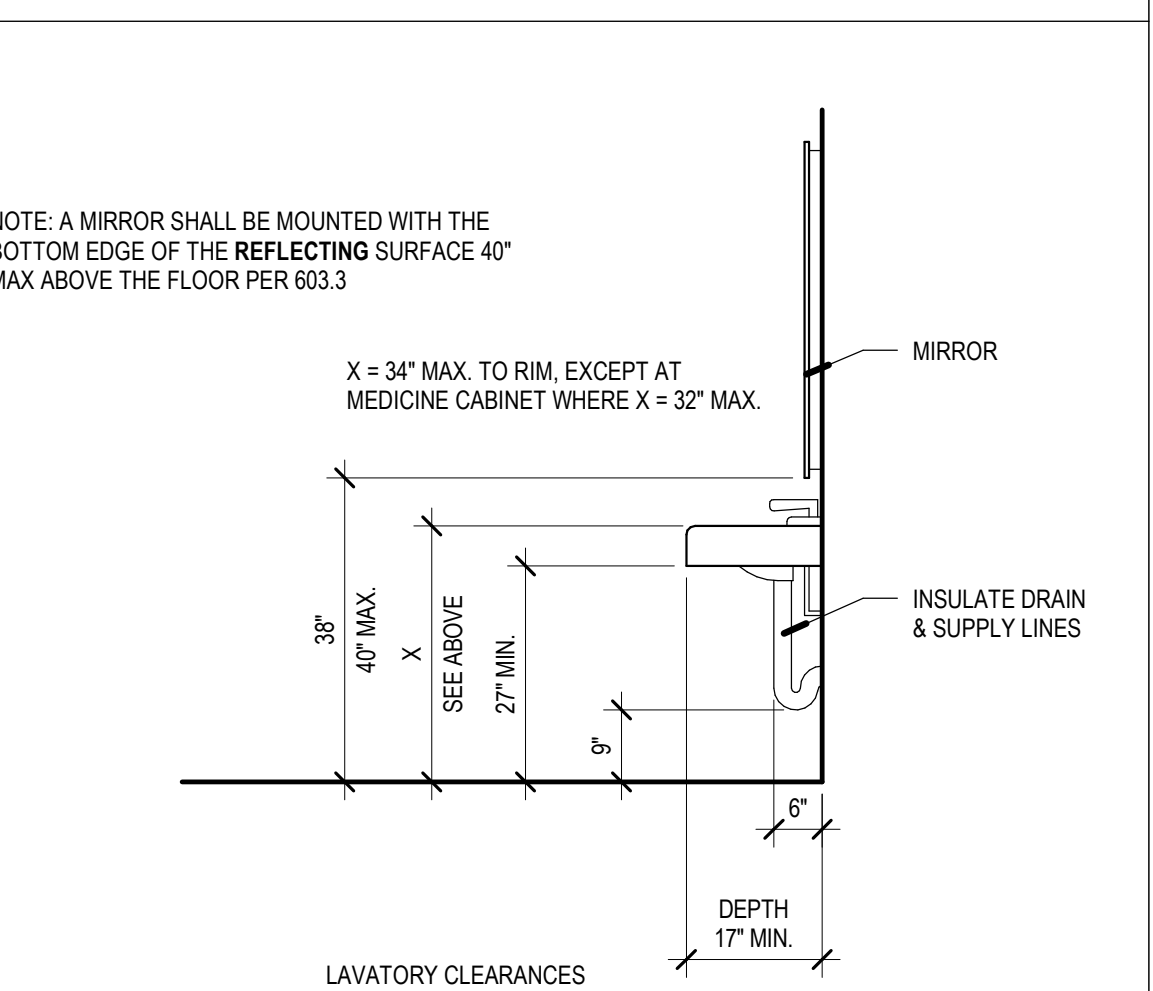
604. TOILETS AND TOILET COMPARTMENTS



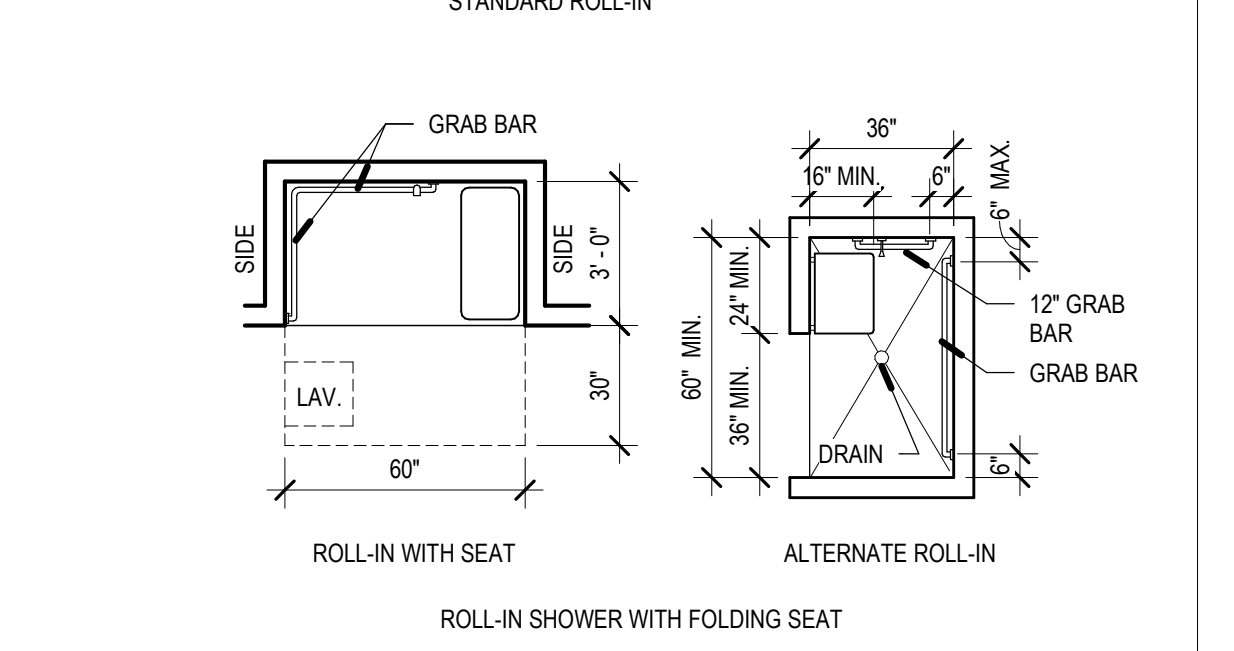
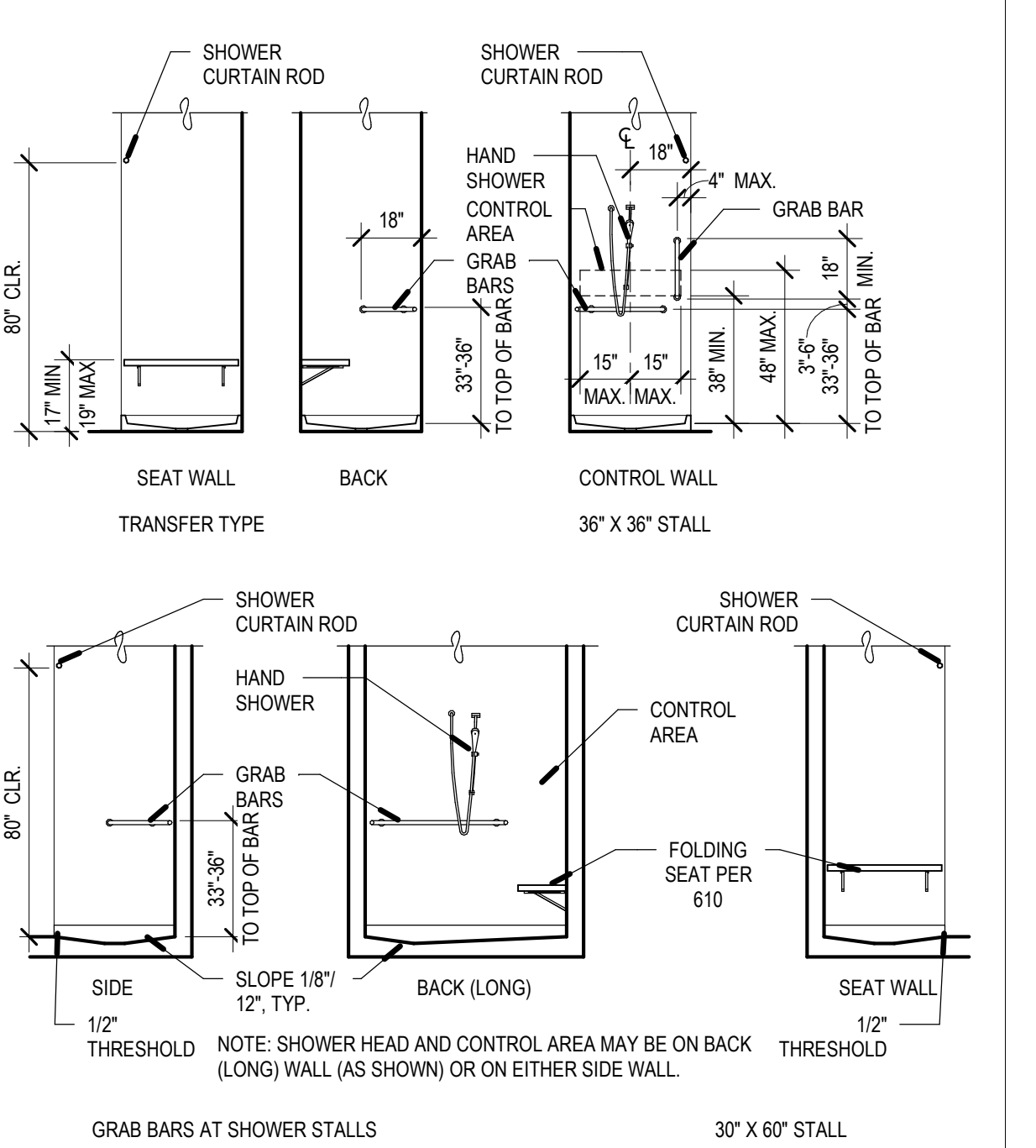
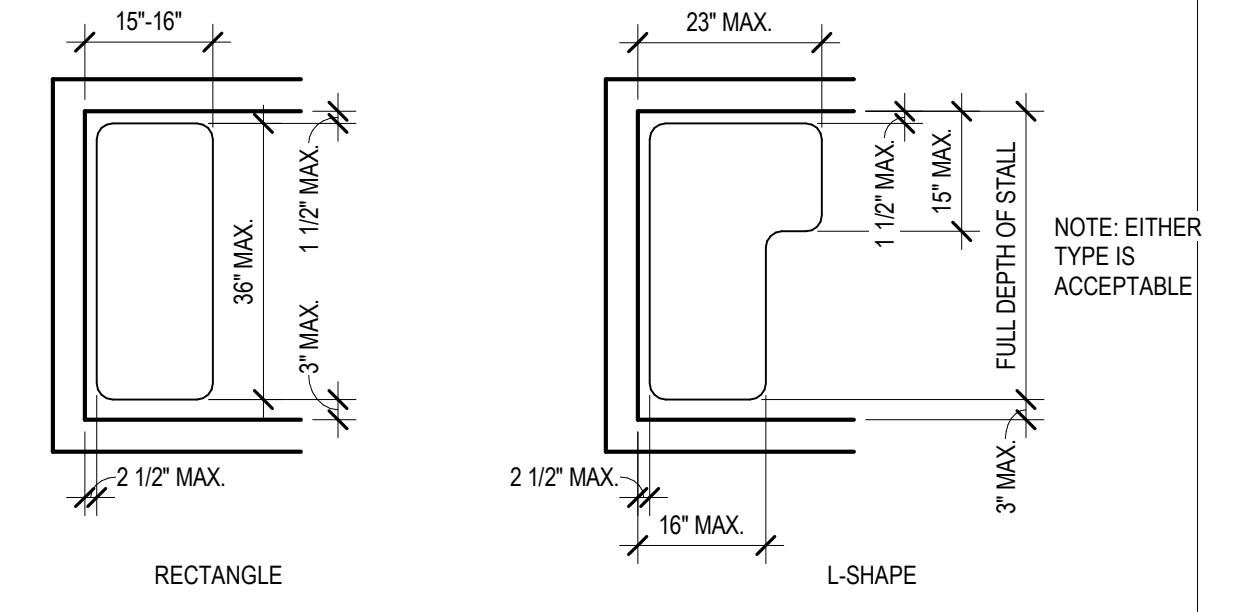
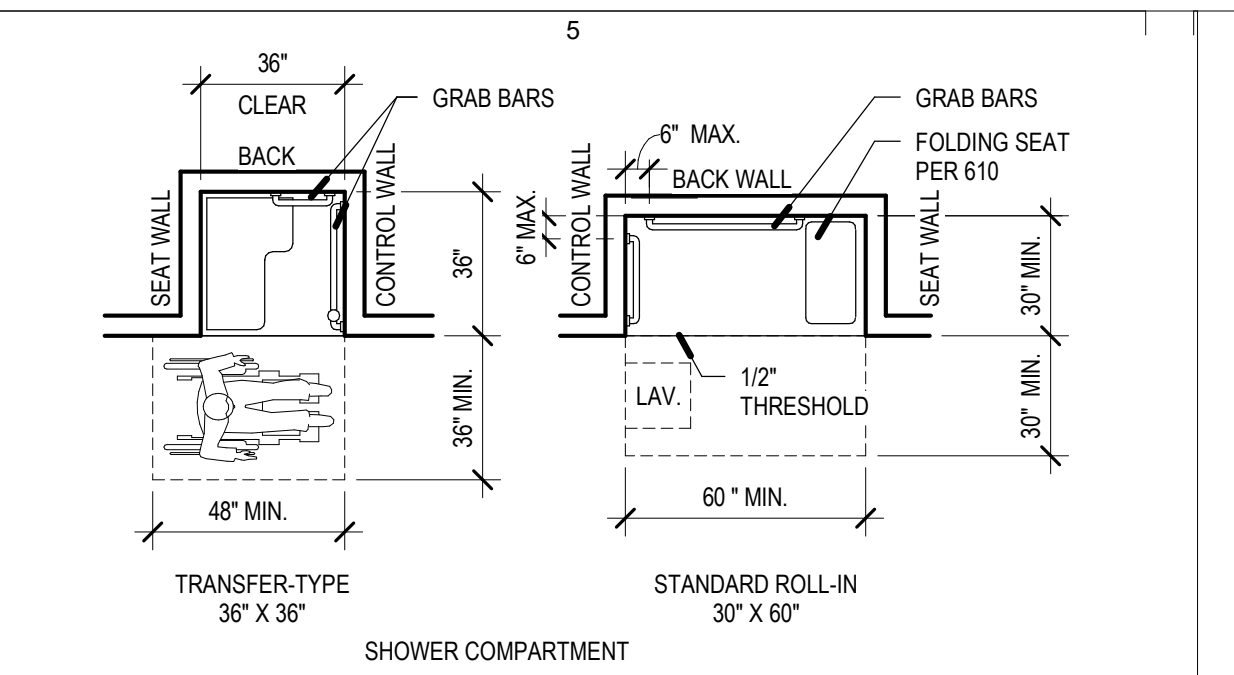
604.7 ACCESSORIES AND EQUIPMENT



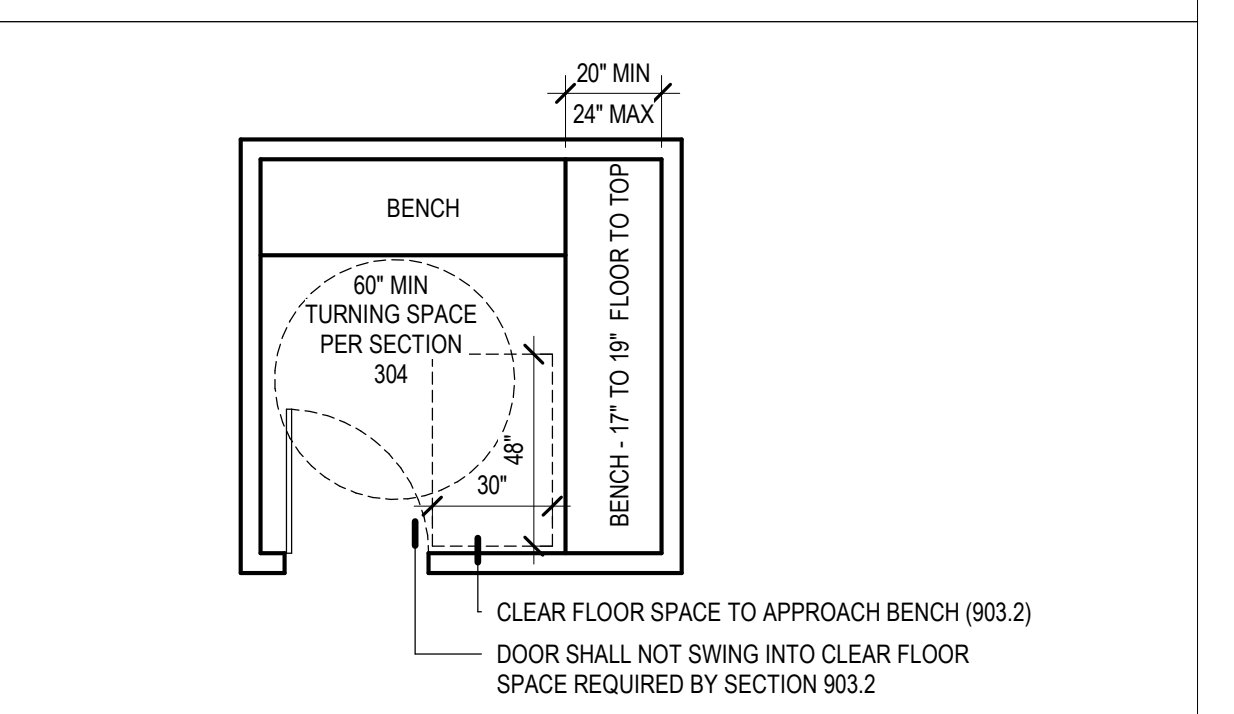
605. URINALS



606. LAVATORIES AND SINKS



608. SHOWER COMPARTMENTS



612. SAUNA AND STEAM ROOMS

612. SAUNA AND STEAM ROOMS