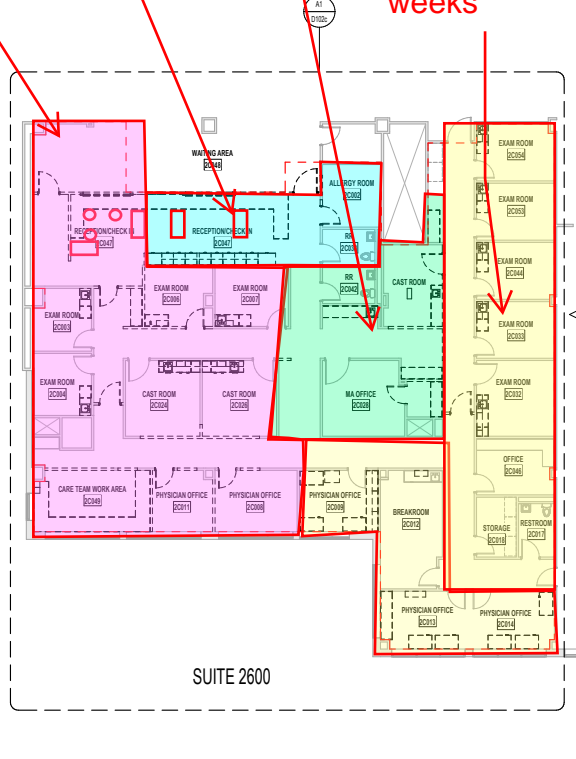


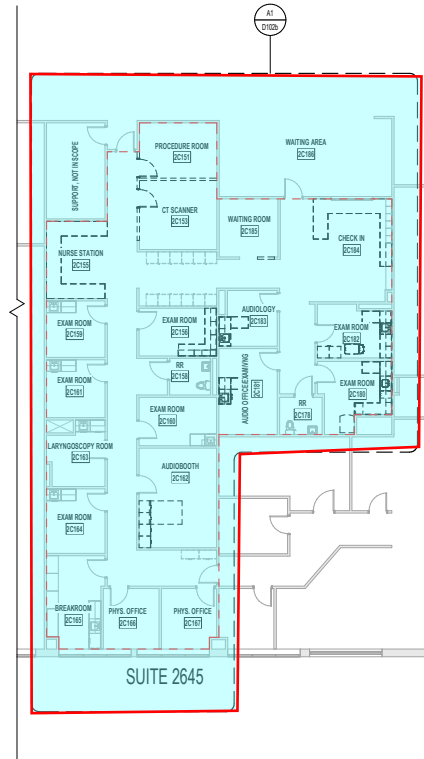
Phase 2, 3 ~27 Weeks ~  
November 2025

Phase 3 A, Phase 2, Phase 3 B,  
~8 weeks ~ 8 weeks ~8 Weeks

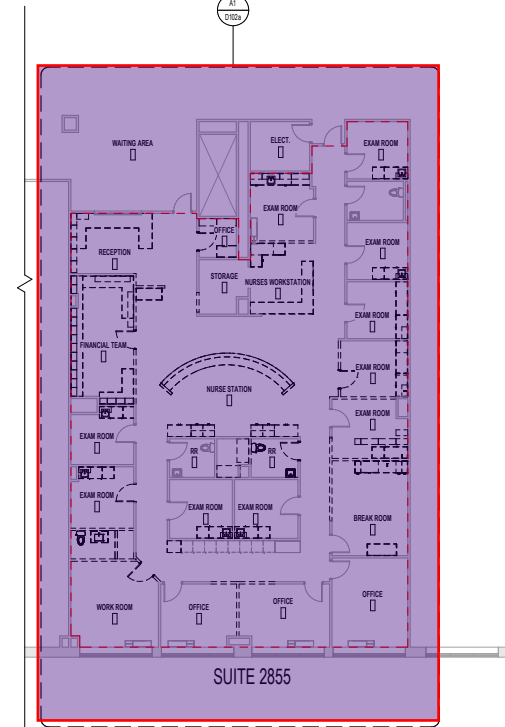
Phase 3C,  
Flooring,  
Millwork and  
Door, ~3  
weeks



Phase 2, ~12 Weeks  
~July 2025



Phase 1, ~ 16 weeks  
~ March 2025  
completion



A1 DEMOLITION - OVERALL  
3/32" = 1'-0"

**\* Allow 2 weeks  
between phases 1,2,3**