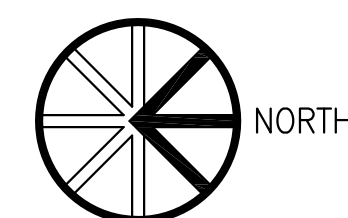


BUILDING PLAN  
SCALE 1"=10'-0"



# LAUNDRY MAT

## TENANT IMPROVEMENT

### 20649 S. HARRISON

### OGDEN, UTAH

#### CODE SUMMARY

OCCUPANCY TYPE:	B
CONSTRUCTION TYPE:	V B
MAXIMUM NO. STORIES	1
MAXIMUM HEIGHT	40 FT
ALLOWABLE AREA	9,000 SQ FT
SPRINKLERED	NO
YARD INCREASE	YES
STRUCTURAL FRAME	0
BEARING WALL EXTERIOR	0
INTERIOR	0
NONBEARING WALL	0
FLOOR /CEILING	0
ROOF/CEILING	0

#### BUILDING SUMMARY

NO. STORIES	1 STORY
TOTAL HEIGHT OF BUILDING	26'-0" REQUIRED
TENANT IMPROVEMENT	1,716 SQ FT

SNOW LOAD	30#/SQ FT
WIND LOAD	110#/SQ FT

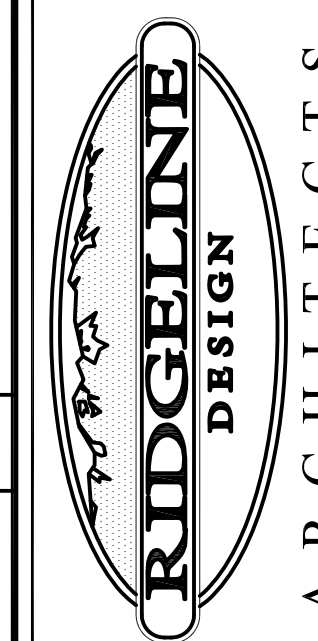
#### APPLICABLE CODE

- 2018 INTERNATIONAL BUILDING CODE
- 2018 INTERNATIONAL PLUMBING CODE
- 2018 INTERNATIONAL MECHANICAL CODE
- 2018 INTERNATIONAL FUEL GAS CODE
- 2017 NATIONAL ELECTRICAL CODE
- 2018 INTERNATIONAL FIRE CODE
- 2018 INTERNATIONAL ENERGY CONSERVATION CODE
- 2010 ANSI 117 HANDICAP REGULATIONS

#### INDEX

- C-0 COVER SHEET
- ARCHITECTURAL
- A-1 FLOOR PLANS
- A-2 REFLECTED CEILING PLAN
- A-3 INTERIOR ELEVATION, WALL TYPES AND DETAILS
- PLUMBING
- P001 PLUMBING SCHEDULES AND DETAILS
- P101 PLUMBING FLOOR PLANS
- MECHANICAL
- M001 MECHANICAL SCHEDULES AND DETAILS
- M101 MECHANICAL FLOOR PLANS
- ELETRICAL
- E001 ELECTRICAL SCHEDULES AND DETAILS
- E101 ELECTRICAL FLOOR PLANS

**RIDGELINE DESIGN ARCHITECTS**  
 1708 EAST 5550 SOUTH #20  
 SOUTH OGDEN, UT 84403  
 PHONE: 801-392-6882 FAX: 801-621-1494  
 www.ridgeline-design.com



Stamp:

Date:  
8/29/2019

Revisions:

**LAUNDRY MAT**  
**TENANT IMPROVEMENT**  
 2064 S. HARRISON  
 OGDEN, UTAH

Project Number:  
1918

Sheet Title:  
COVER SHEET

Sheet:  
C-0

DOOR SCHEDULE																		
DOOR					FRAME					DETAILS				REMARKS				
DOOR NO.	WIDTH	HEIGHT	DEPTH	MAT'L	DOOR SKIN	FINISH	DOOR TYPE	DOOR GLASS	MAT'L	FINISH	FRAME TYPE	HARDWARE GROUP	RATING	HEAD	JAMB	MULLION	THRES	
101A	3-0	7-0	1 3/4"	SC	WOOD	PRE-FINISH	A	-	HM	PAINT	1	1	-	4/A-3	5/A-3	-	-	
102A	3-0	7-0	1 3/4"	SC	WOOD	PRE-FINISH	A	-	HM	PAINT	1	1	-	4/A-3	5/A-3	-	-	
103A	3-0	7-0	1 3/4"	SC	WOOD	PRE-FINISH	A	-	HM	PAINT	1	3	-	4/A-3	5/A-3	-	-	

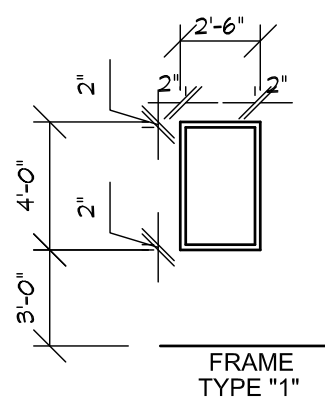
HARDWARE GROUPS			
GROUP 1	GROUP 2	GROUP 3	GROUP 4
1 1/2 PR BUTTS (BALL BEARING)	1 1/2 PR BUTTS (BALL BEARING)		
1 LATCHSET - LEVER	1 LATCHSET - LEVER		
1 OFFICE FUNCTION WALL STOP	1 OFFICE FUNCTION WALL STOP		
1 OFFICE FUNCTION WALL STOP	1 OFFICE FUNCTION WALL STOP		

DOOR SKIN: CHERRY (PRE-FINISHED)

NOTE: PROVIDE SIGN ON EXISTING ALUM STOREFRONT DOOR THIS DOOR TO REMAIN UNLOCKED WHEN BUILDING IS OCCUPIED

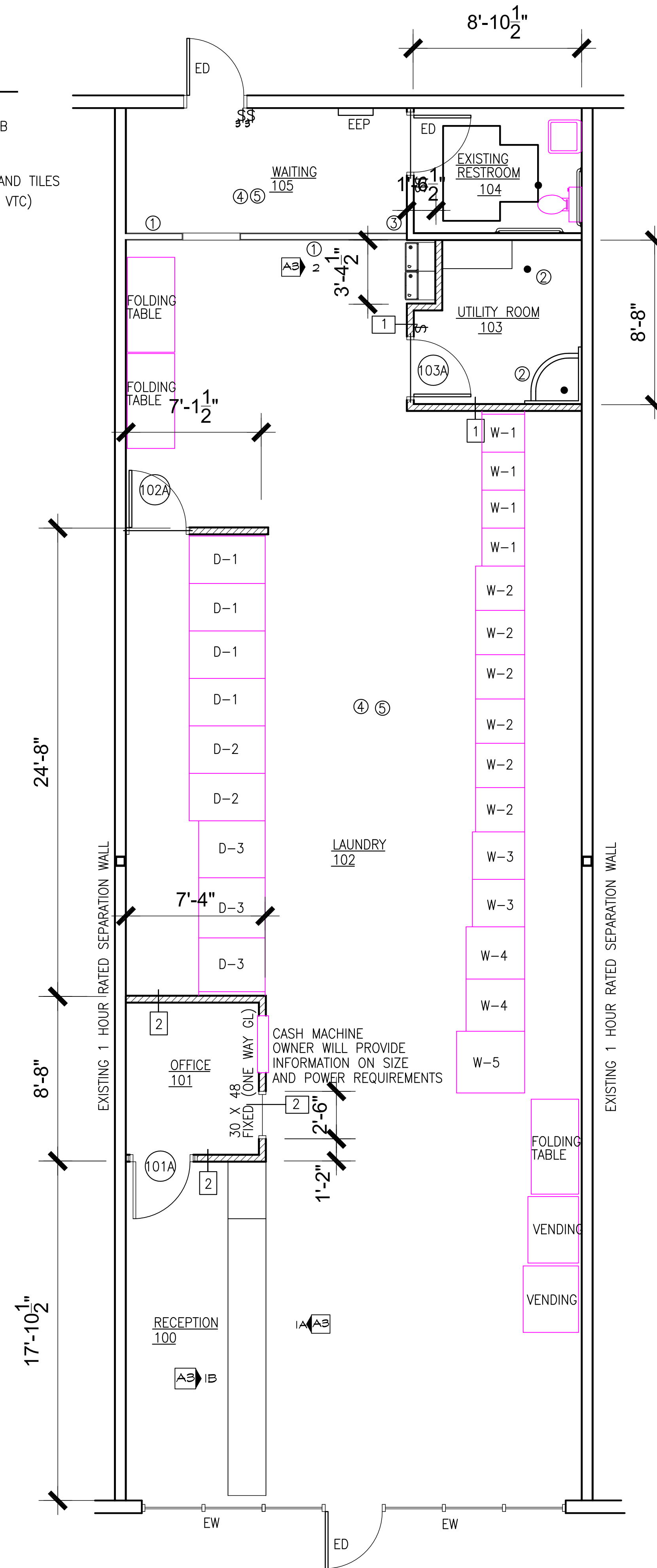
FINISH SCHEDULE							
ROOM NO.	ROOM NAME	FLOOR	BASE	WALL	WNST	CEILING	REMARKS
100	RECEPTION	CARPET	6" CERAMIC TILE	PAINT	TILE	2 X 4 LAY IN DRYWALL (PAINT) OPEN TO STRUCT. EXISTING CLG	
101	OFFICE	CARPET	6" CERAMIC TILE	PAINT	TILE	2 X 4 LAY IN DRYWALL (PAINT) OPEN TO STRUCT. EXISTING CLG	
102	LAUNDRY	CARPET	6" CERAMIC TILE	PAINT	TILE	2 X 4 LAY IN DRYWALL (PAINT) OPEN TO STRUCT. EXISTING CLG	
103	UTILITY	CARPET	6" CERAMIC TILE	PAINT	TILE	2 X 4 LAY IN DRYWALL (PAINT) OPEN TO STRUCT. EXISTING CLG	4' X 4' L WAINSCOT @ MOP SINK
104	RESTROOM	CARPET	6" CERAMIC TILE	PAINT	TILE	2 X 4 LAY IN DRYWALL (PAINT) OPEN TO STRUCT. EXISTING CLG	
105	WAITING	CARPET	6" CERAMIC TILE	PAINT	TILE	2 X 4 LAY IN DRYWALL (PAINT) OPEN TO STRUCT. EXISTING CLG	

WINDOW SCHEDULE												
WINDOW			FRAME				DETAILS				REMARKS	
WINO NO.	MAT'L	GLASS	FINISH	MAT'L	FRAME TYPE	FINISH	RATING	HEAD	JAMB	MULLION	SILL	
101	FLOAT	1/4"	CLEAR	HM	1	PAINT	-	6/A-3	7/A-3	-	-	



**DEMO NOTE:**

- REMOVE EXISTING WOOD WALL
- SAW CUT AND REMOVE 4" CONC SLAB PLUMBING DRAIN AND FIXTURE
- SAW CUT AND REMOVE STUD WALL
- REMOVE ALL EXISTING CEILING GRID AND TILES
- REMOVE ALL FLOORING (CARPET AND VTC)



**WALL LEGEND**

	EXISTING EXTERIOR WALL
	EXISTING INTERIOR 2 X 4 WALL
	DEMO WALL
	INTERIOR 2 X 4 WALL

**NOTE:**  
 DIMENSIONS ARE FROM FACE OF EXISTING WALL TO FACE OF NEW STUDS  
 MATCH 4" CONC SLAB TO MATCH WHERE DEMO OCCURED FOR NEW PLUMBING  
 COORDINATE WITH LAUNDRY EQUIPMENT SUPPLIER ON EQUIPMENT SIZE, LOCATION, PLUMBING AND POWER AND MECHANICAL REQUIREMENTS  
 SEE M001 FOR ROOF PENETRATIONS DETAILS

**MAIN FLOOR PLAN**  
 SCALE 1/8" = 1'-0"

**RIDGELINE DESIGN ARCHITECTS**  
 1708 EAST 5550 SOUTH #20  
 SOUTH OGDEN, UT 84403  
 PHONE: 801-392-6882 FAX: 801-621-1494  
 WWW.RIDGELINE-DESIGN.COM

**RIDGELINE DESIGN ARCHITECTS**

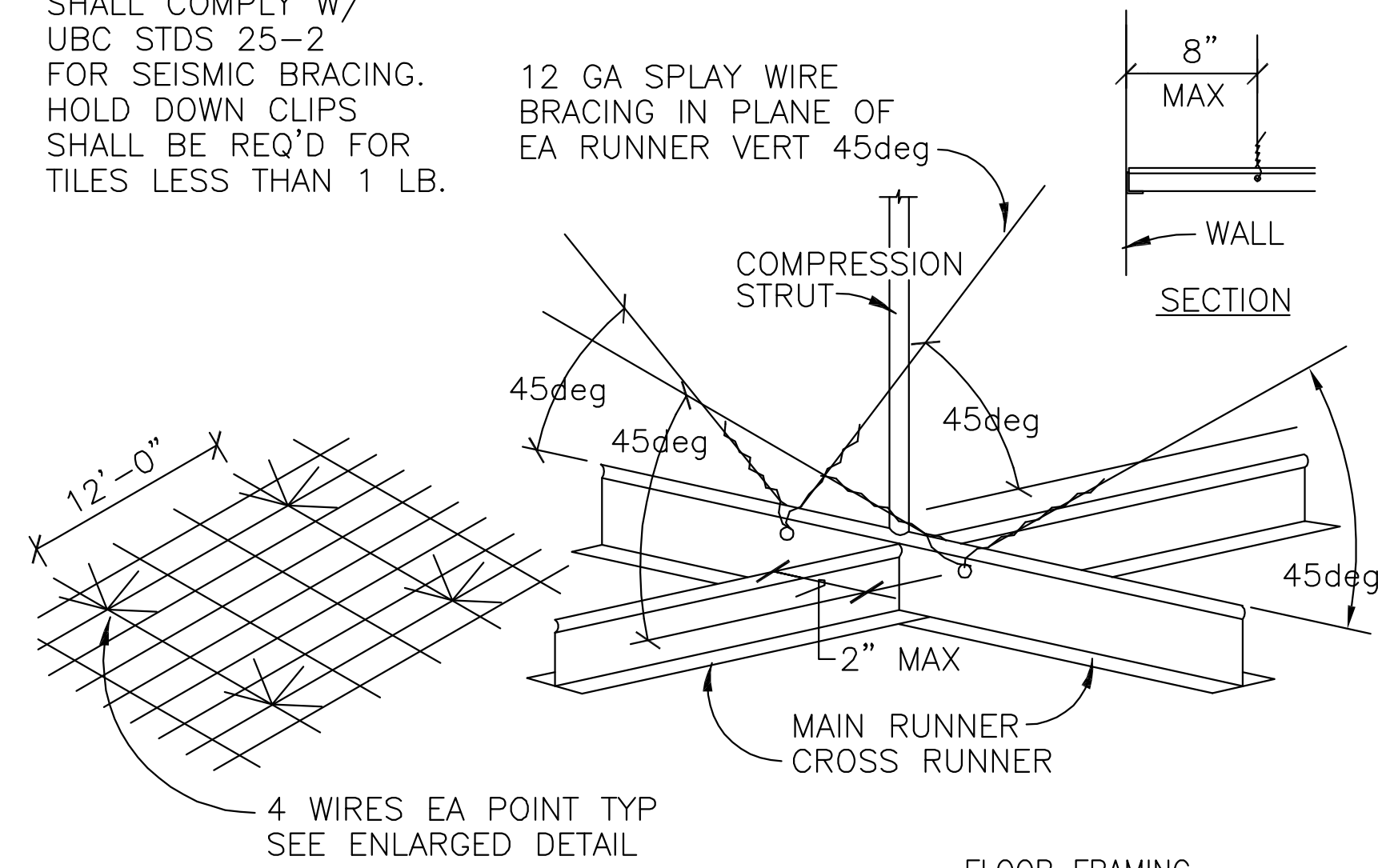
**LAUNDRY MAT**  
 Tenant Improvement  
 2064 S HARRISON  
 OGDEN, UTAH

Project Number: 1918

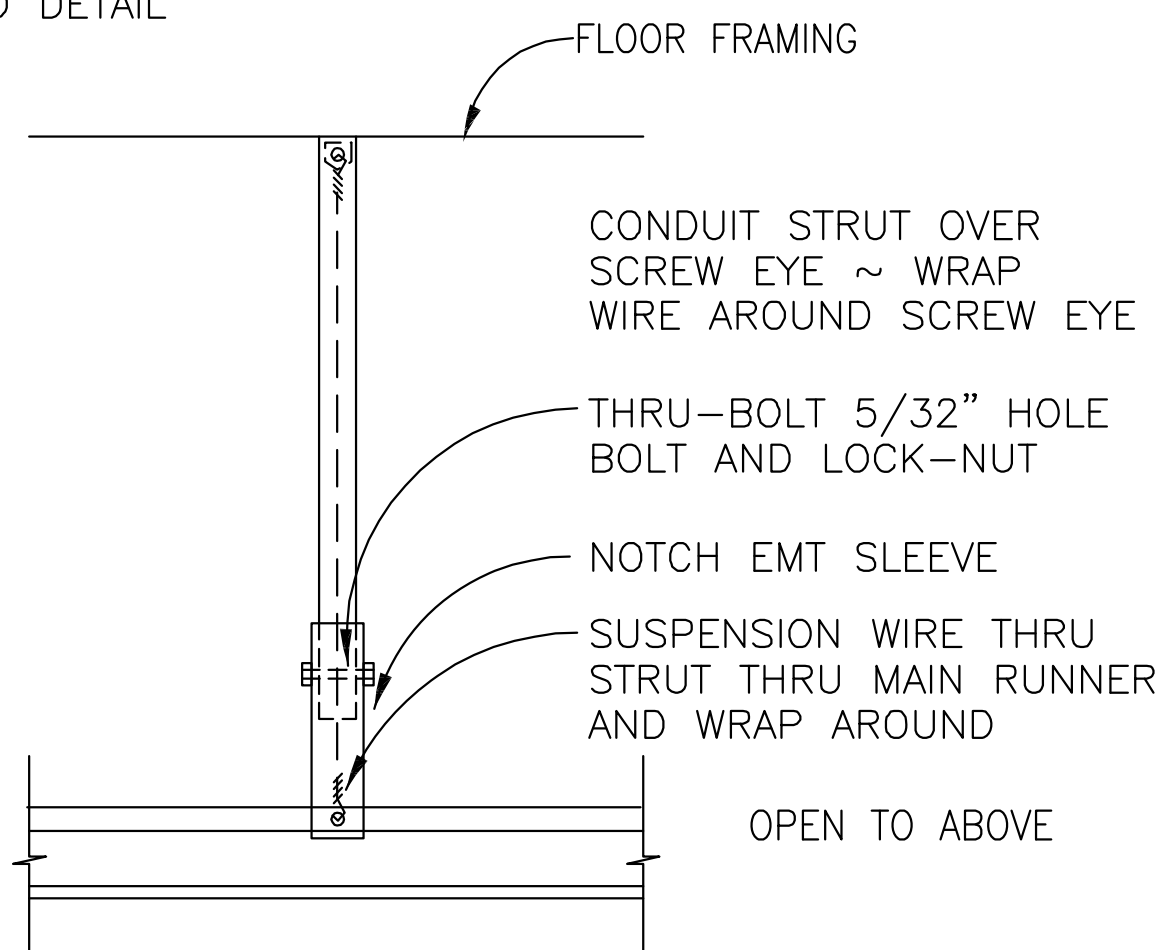
Sheet Title: FLOOR PLANS  
 WINDOW SCH  
 DOOR SCHED  
 FINISH SCHED

Sheet: **A-1**

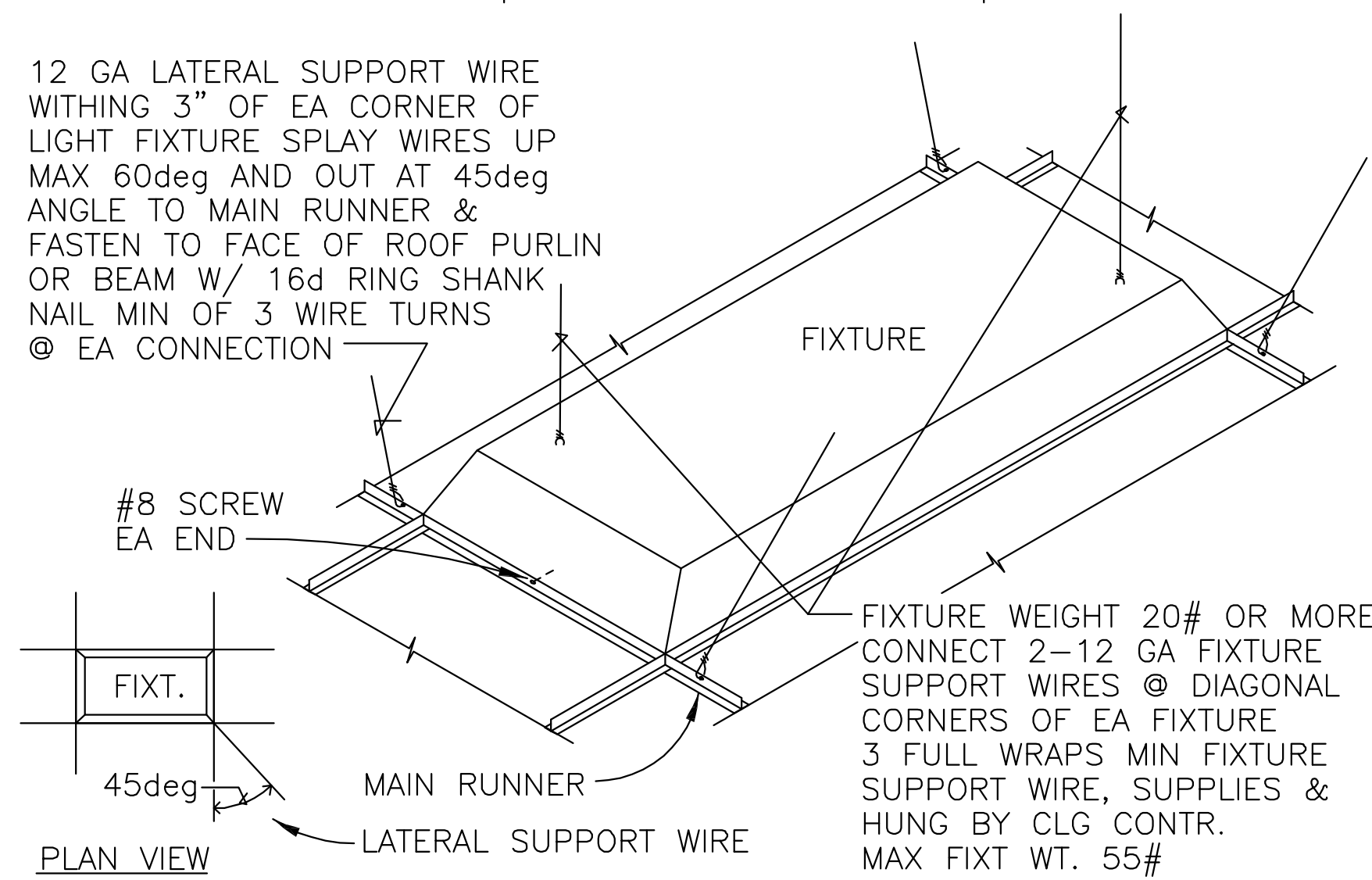
NOTES: SUSP CLG SHALL COMPLY W/ UBC STDS 25-2 FOR SEISMIC BRACING. HOLD DOWN CLIPS SHALL BE REQ'D FOR TILES LESS THAN 1 LB.



EMT STRUT	
SIZE	LENGTH
1/2"	4'-0"
3/4"	5'-2"
1"	6'-6"
1 1/4"	8'-6"
1 1/2"	9'-10"
2"	12'-7"
2 1/2"	16'-6"
3"	20'-2"
3 1/2"	26'-0"



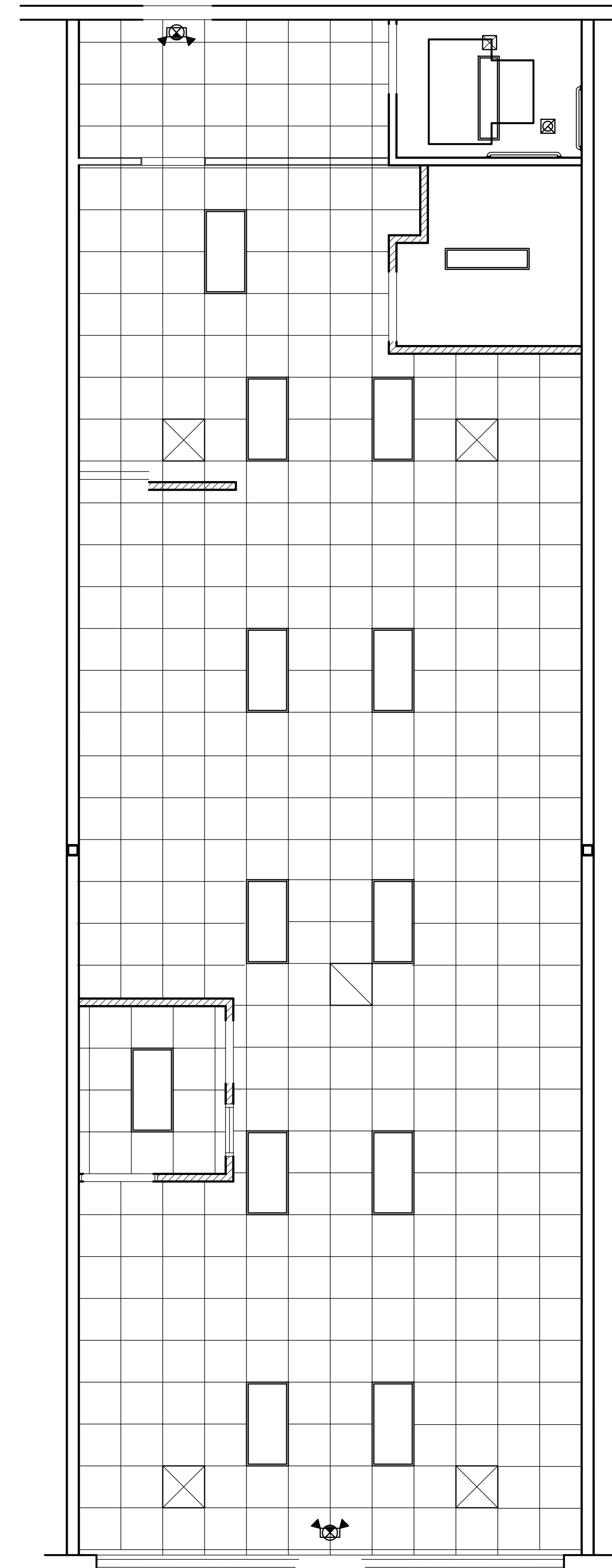
12 GA LATERAL SUPPORT WIRE WITHING 3" OF EA CORNER OF LIGHT FIXTURE SPLAY WIRES UP MAX 60deg AND OUT AT 45deg ANGLE TO MAIN RUNNER & FASTEN TO FACE OF ROOF PURLIN OR BEAM W/ 16d RING SHANK NAIL MIN OF 3 WIRE TURNS @ EA CONNECTION



**TYP SUSP CLG STD DETAILS**

NTS

NOTES:  
SUSPENDED ACCOUSTICAL CEILING SHALL BE INSTALLED IN ACCORDANCE WITH ASTM C 635/636 CLASS A MATERIAL CLASSIFICATION



MAIN FLOOR REFLECTED CEILING PLAN  
SCALE 1/4"=1'-0"



NOTE:  
MECHANICAL AND ELECTRICAL EQUIPEMENT SHALL BE SEISMIC ANCHORED PER MANUFACTURES DESIGNATED SEISMIC SYSTEM OR ANALYZE THE COMPONENTS AND ITS MOUNTING SYSTEM OR ANCHORAGE AND SUBMIT A CERTIFICATE OF COMPLIANCE FOR REVIEW AND ACCEPTANCE BY THE DESIGN PROFESSIONAL AND THE BUILDING OFFICIAL

REMOVE EXISTING CEILING SYSTEM W/ ASSOCIATED LIGHTING FIXTURES AND CEILING DIFFUSERS



Stamp:

Date:  
8-29-2019

Revisions:

LAUNDRY MAT  
Tenant Improvement

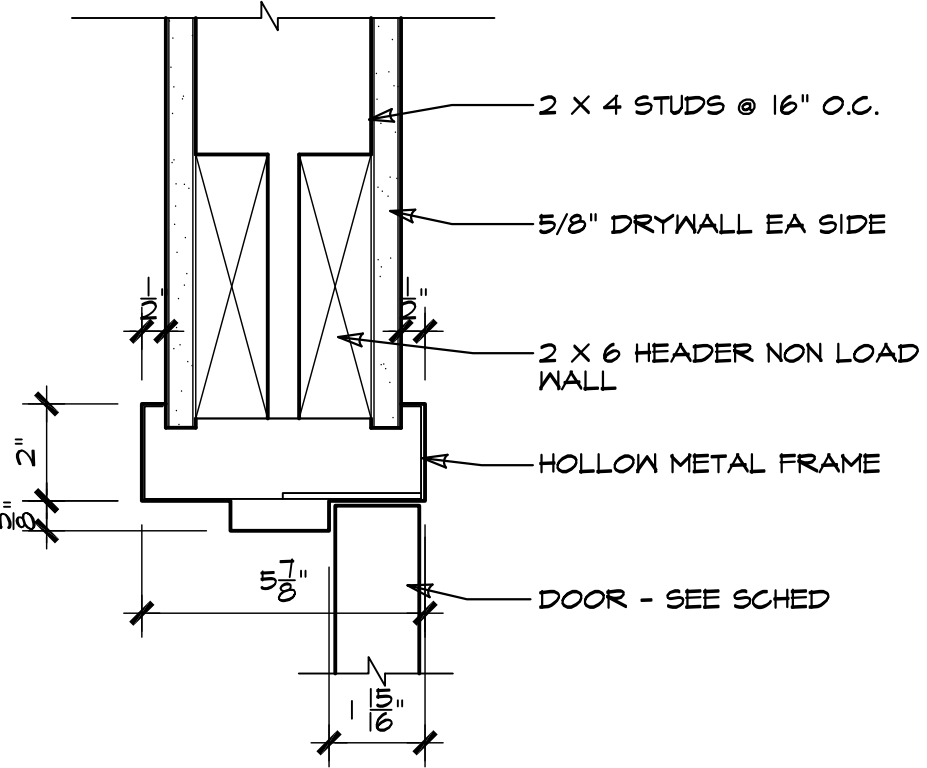
2087 S HARRISON  
OGDEN, UTAH

Project Number:  
1918

Sheet Title:  
REFLECTED  
CEILING  
PLANS  
& DET

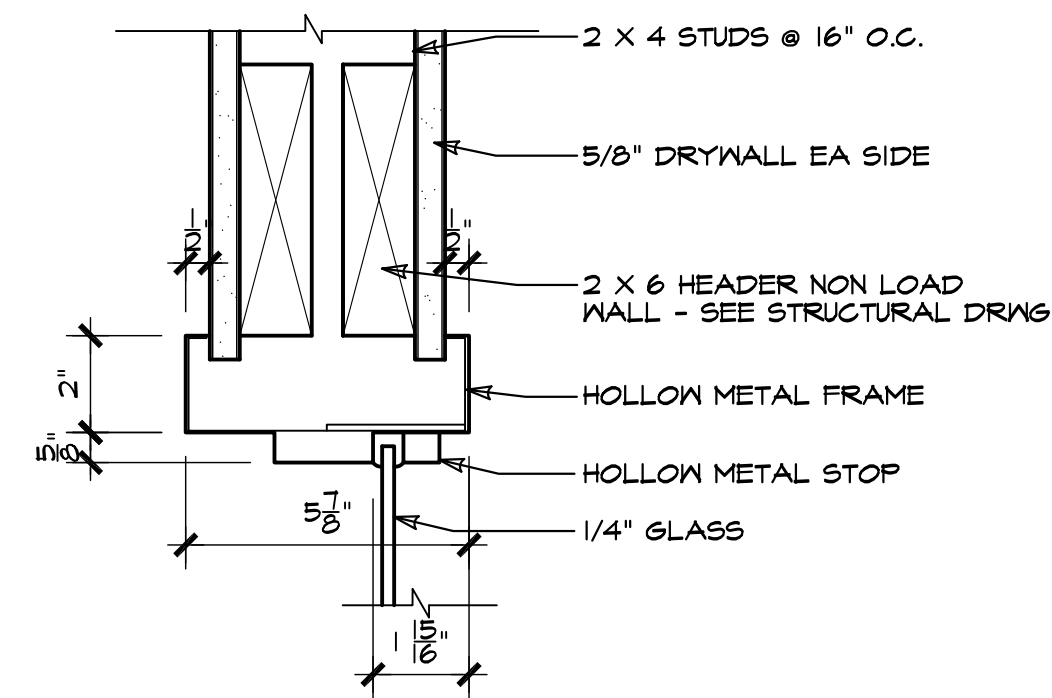
Sheet:

A-2



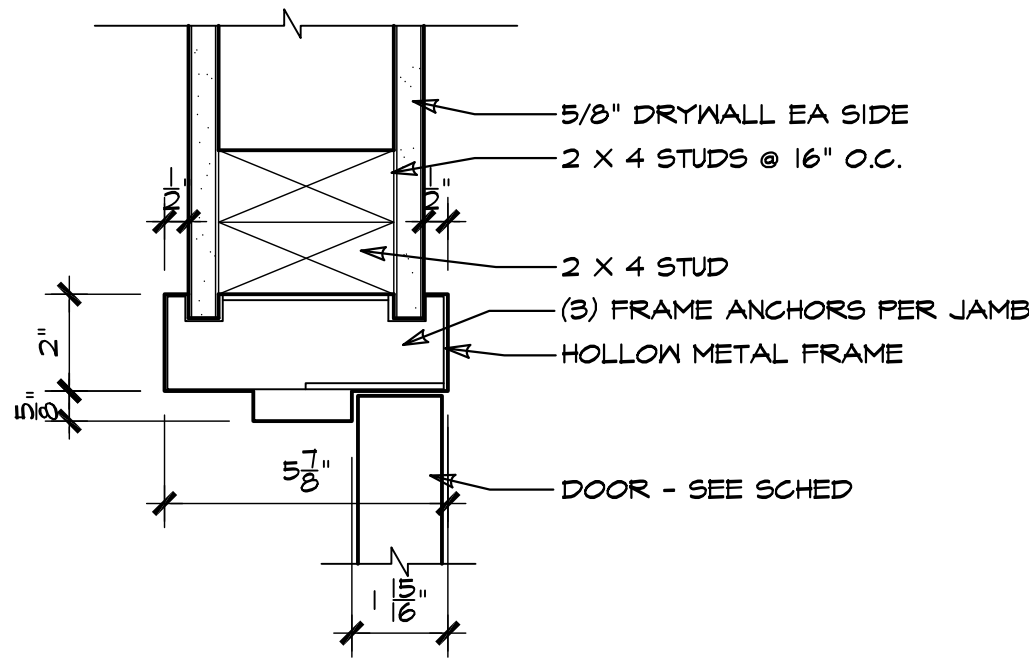
DRHEADS

4 SCALE 3/8"=1'-0" DOOR HEAD



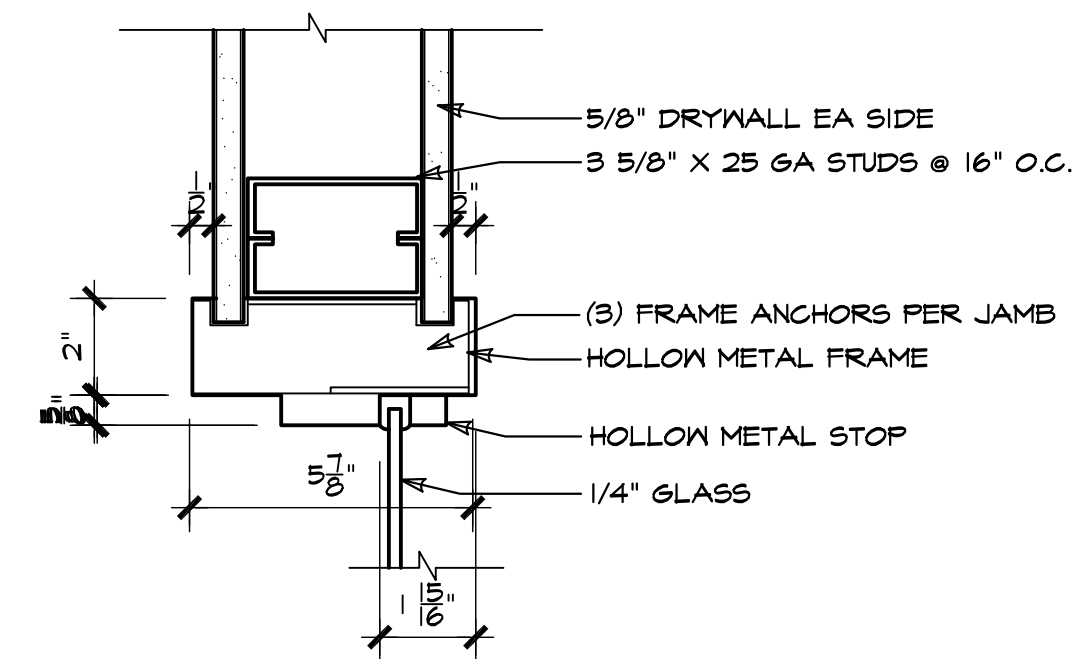
WDWHEADS

6 SCALE 3/8"=1'-0" WINDOW HEAD



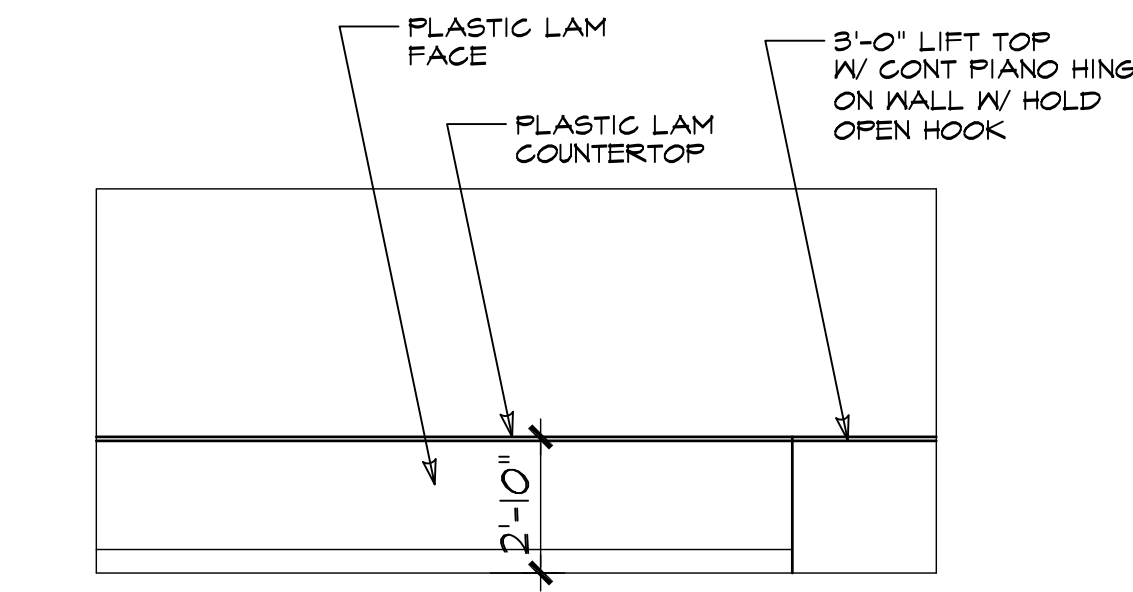
DRJAMBS

5 SCALE 3/8"=1'-0" DOOR JAMB

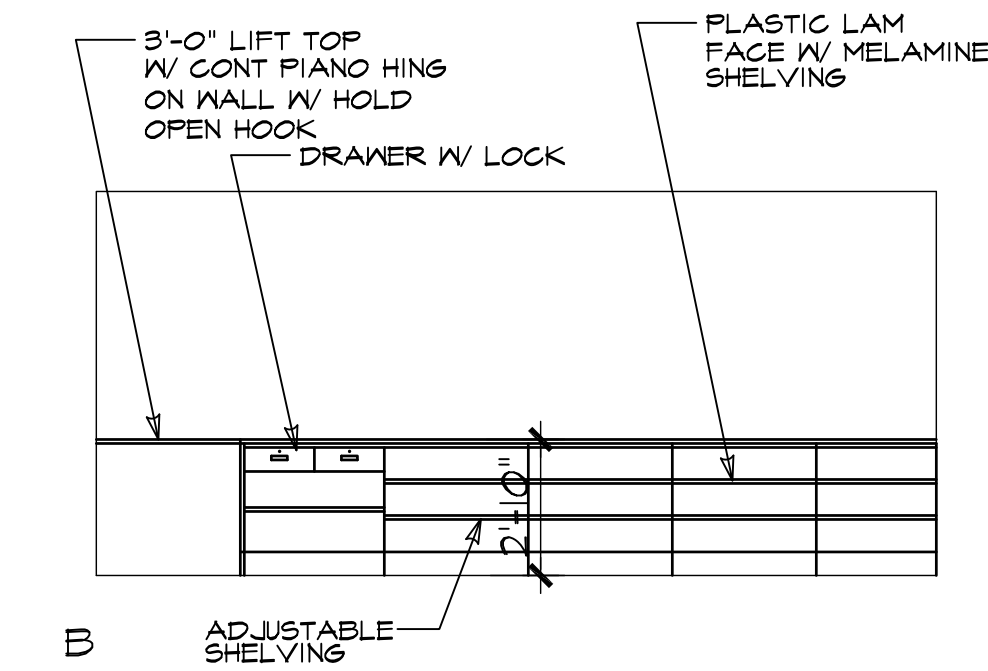


WDWJAMBS

7 SCALE 3/8"=1'-0" WINDOW JAMB

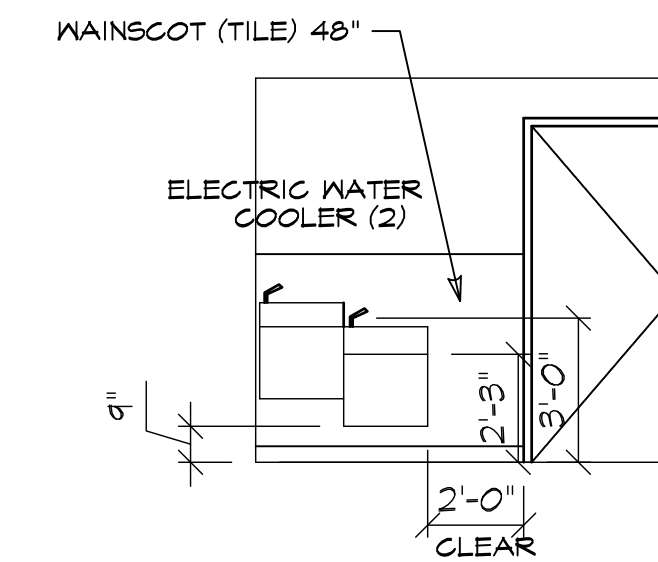


A



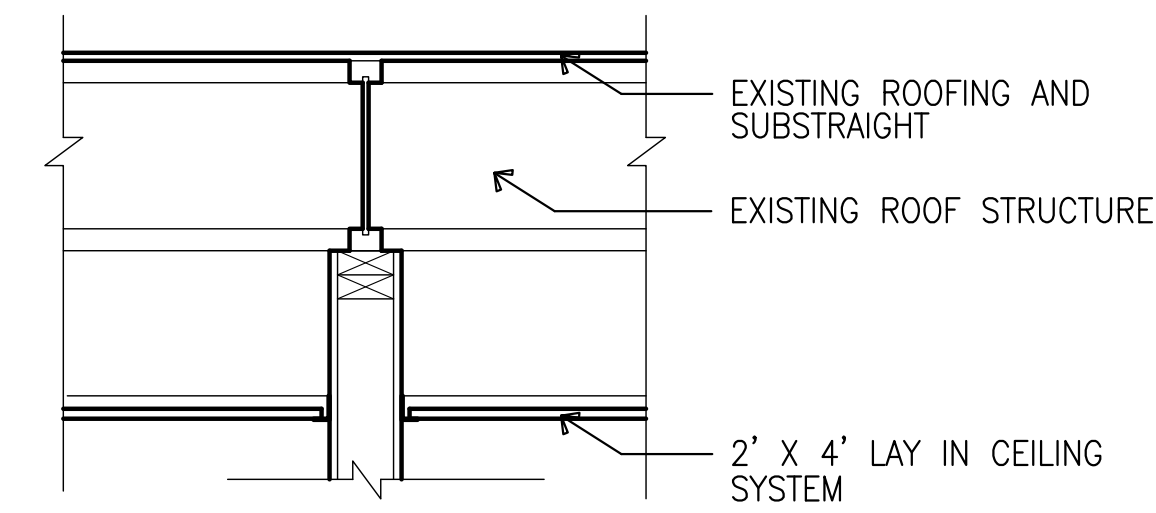
B

1 SCALE 1/4"=1'-0" FRONT COUNTER

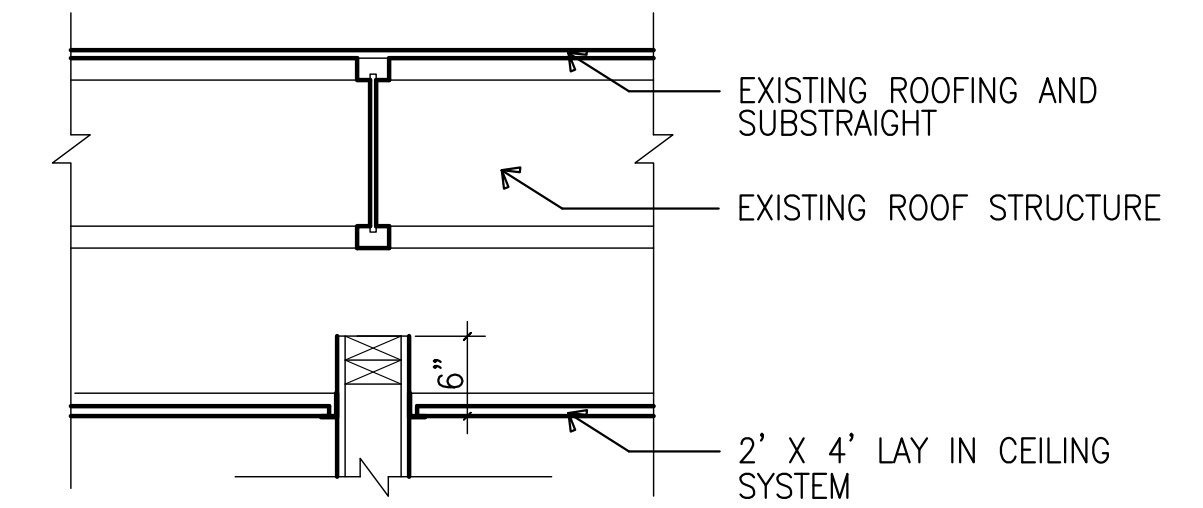


HC EWC SCALE 1/4"=1'-0"

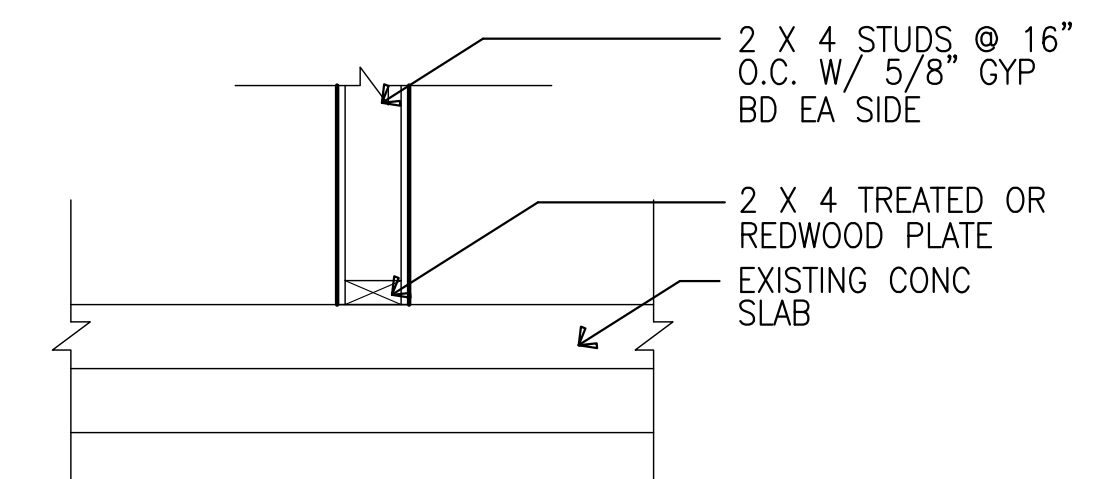
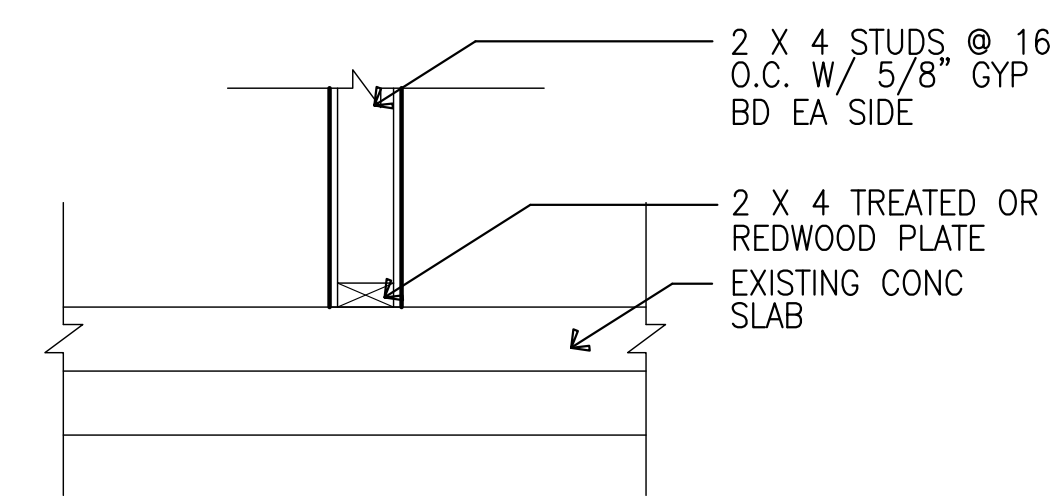
2 A-3



WALL TYPE 1 SCALE 1"=1'-0"



WALL TYPE 2 SCALE 1"=1'-0"



Stamp:

Date: 8-29-2019

Revisions:

LAUNDRY MAT  
Tenant Improvement

2064 S HARRISON  
OGDEN, UTAH

Project Number: 1918

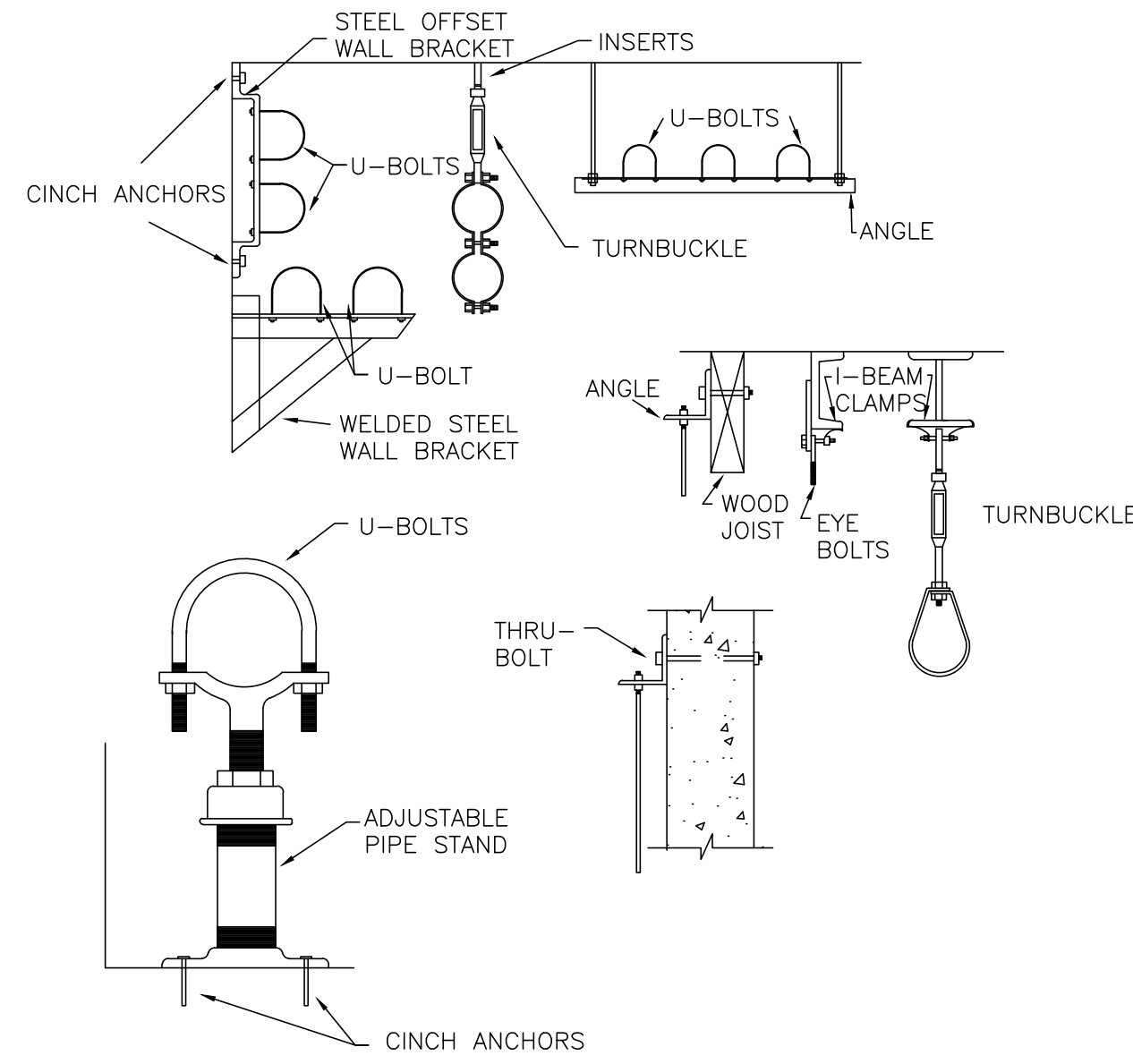
Sheet Title:

RR ELEVATION  
DR & WDW DET  
WALL TYPES

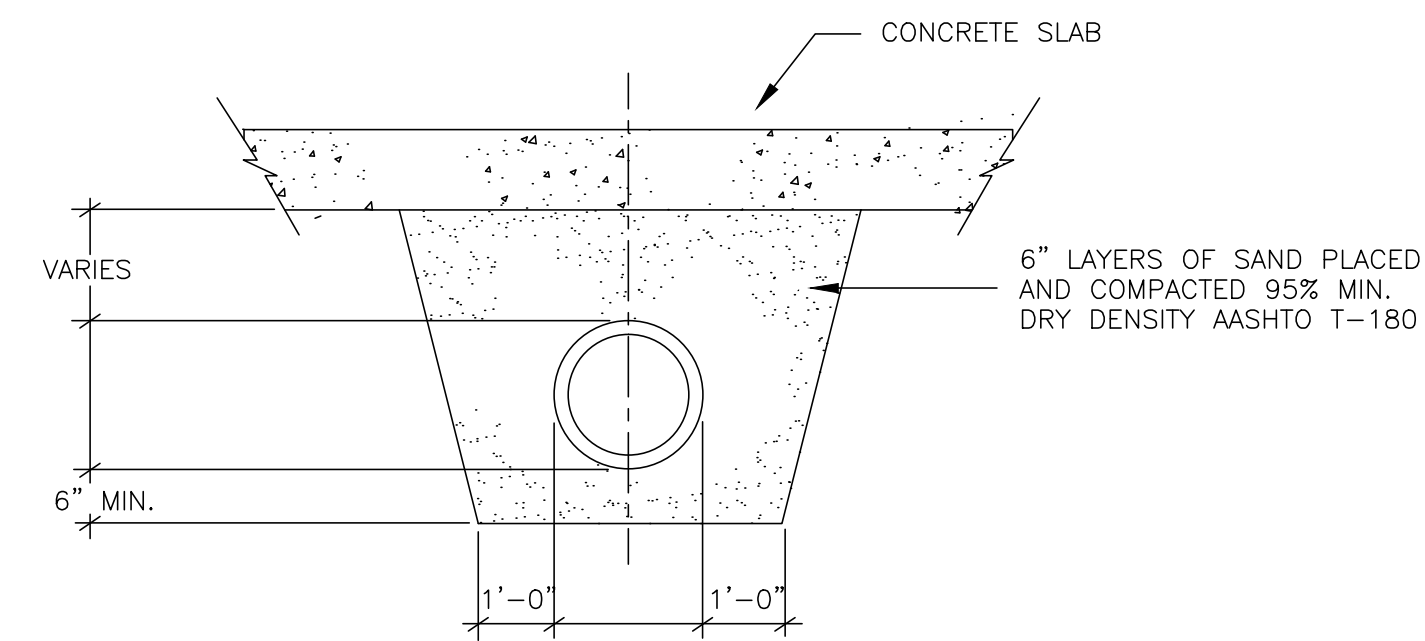
Sheet:

A-3

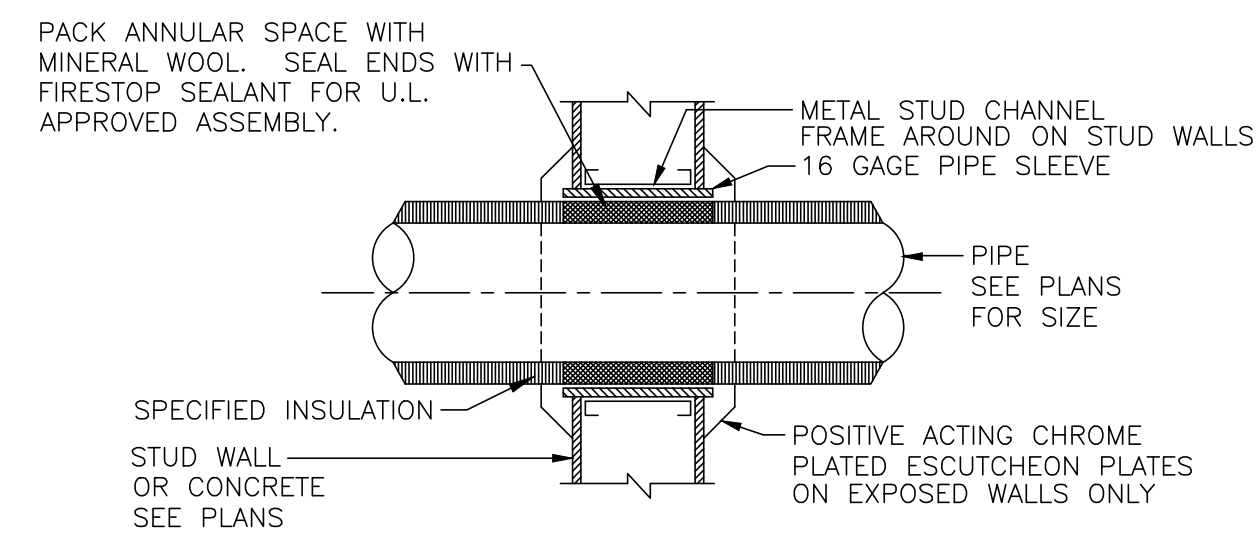




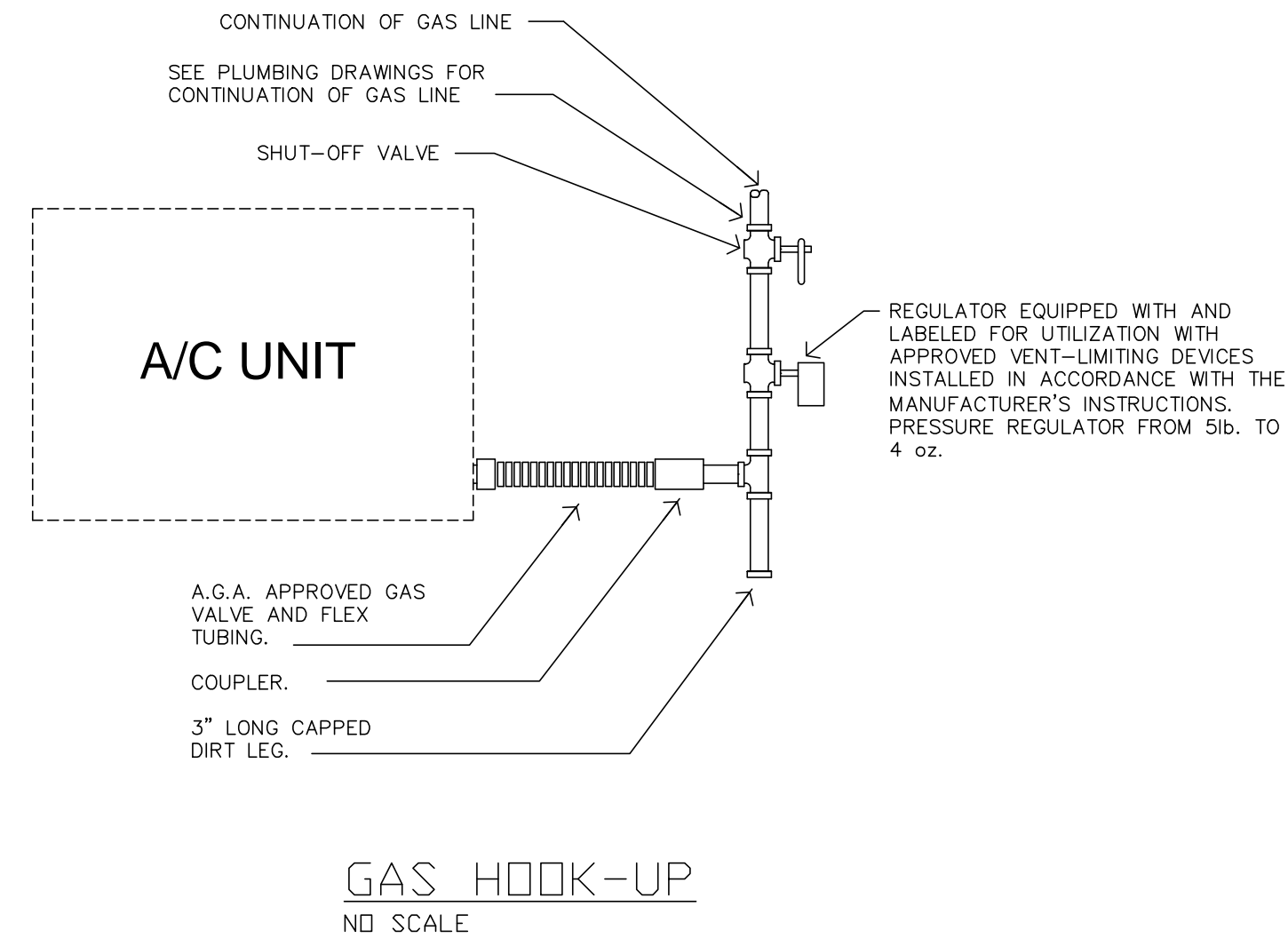
TYPICAL PIPE SUPPORT DETAIL  
NO SCALE



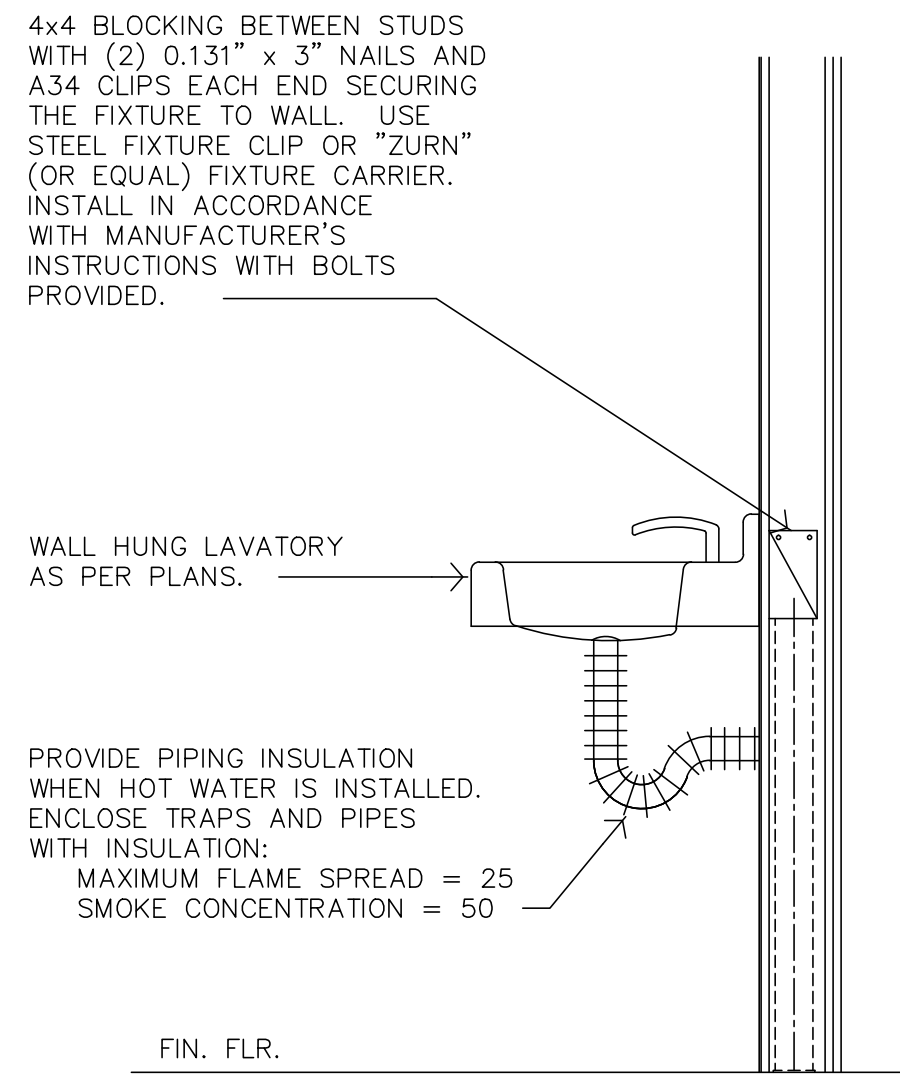
TYPICAL PIPE UNDER SLAB DETAIL  
NO SCALE



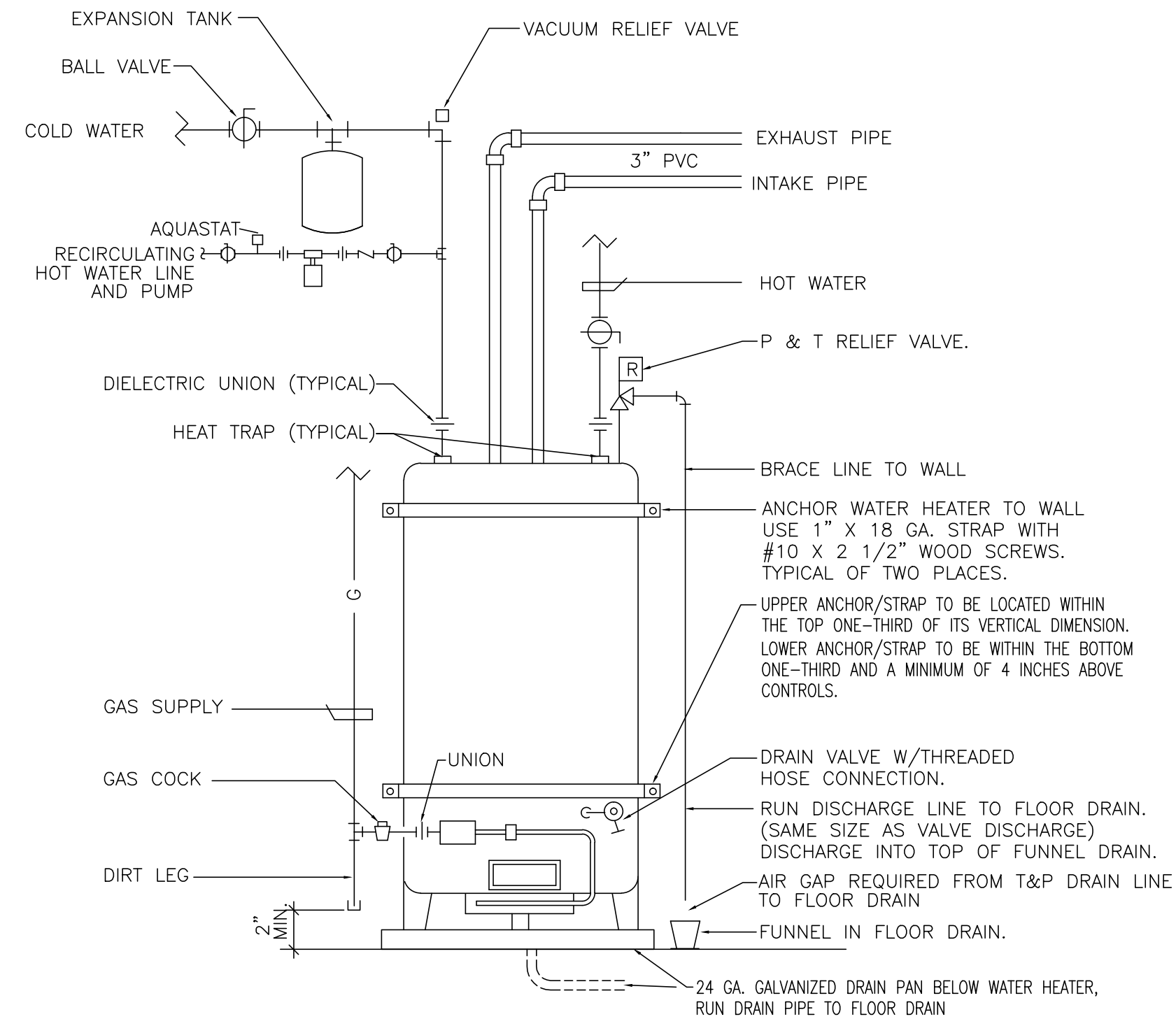
PIPE THROUGH WALL DETAIL  
NO SCALE



GAS HOOK-UP  
NO SCALE



LAVATORY ATTACHMENT  
NOT TO SCALE



WATER HEATER DETAIL  
NO SCALE

PLUMBING FIXTURE SCHEDULE									
SYMBOL	DESCRIPTION	MANUFACTURE & CATALOG	TRIM & DETAIL REFERENCE	PIPE SIZE (INCH)					NOTES
				TRAP	WASTE	VENT	C.W.	H.W.	
FD-1	FLOOR DRAIN	SMITH 2010-A	TRAP 7220 WITH DEEP SEAL P-TRAP	2	2	2	-	-	
WC-1	ADA WATER CLOSET	TANK: KOHLER K-3493 SEAT: KOHLER 4670-CA		INT.	4	2	1	-	
LI-1	LINT INTERCEPTOR	SMITH 8910-150		6	6	2	-	-	150GPM FLOW
L-2	LAVATORY ADA	KOHLER GREENWICH K-2032	WALL MOUNT	1 1/2	1 1/2	1 1/2	1/2	1/2	FAUCET & DRAIN K-6883, WATTS LFMMV TEMPERATURE LIMITING
SS-1	SERVICE SINK	KOHLER 6710	FAUCET WITH HOSE KOHLER K-8928	3	3	2	1/2	1/2	
RC-1	RECIRCULATING PUMP	B&G SLC25B		-	-	-	-	1/2	6GPM, 4FT
WH-1	WATER HEATER	LOCHINVAR	SHEILD SNR151-100	-	-	-	1-1/2	1-1/2	150BTUH, 90GAL, 175GPH, 1ST=247GAL

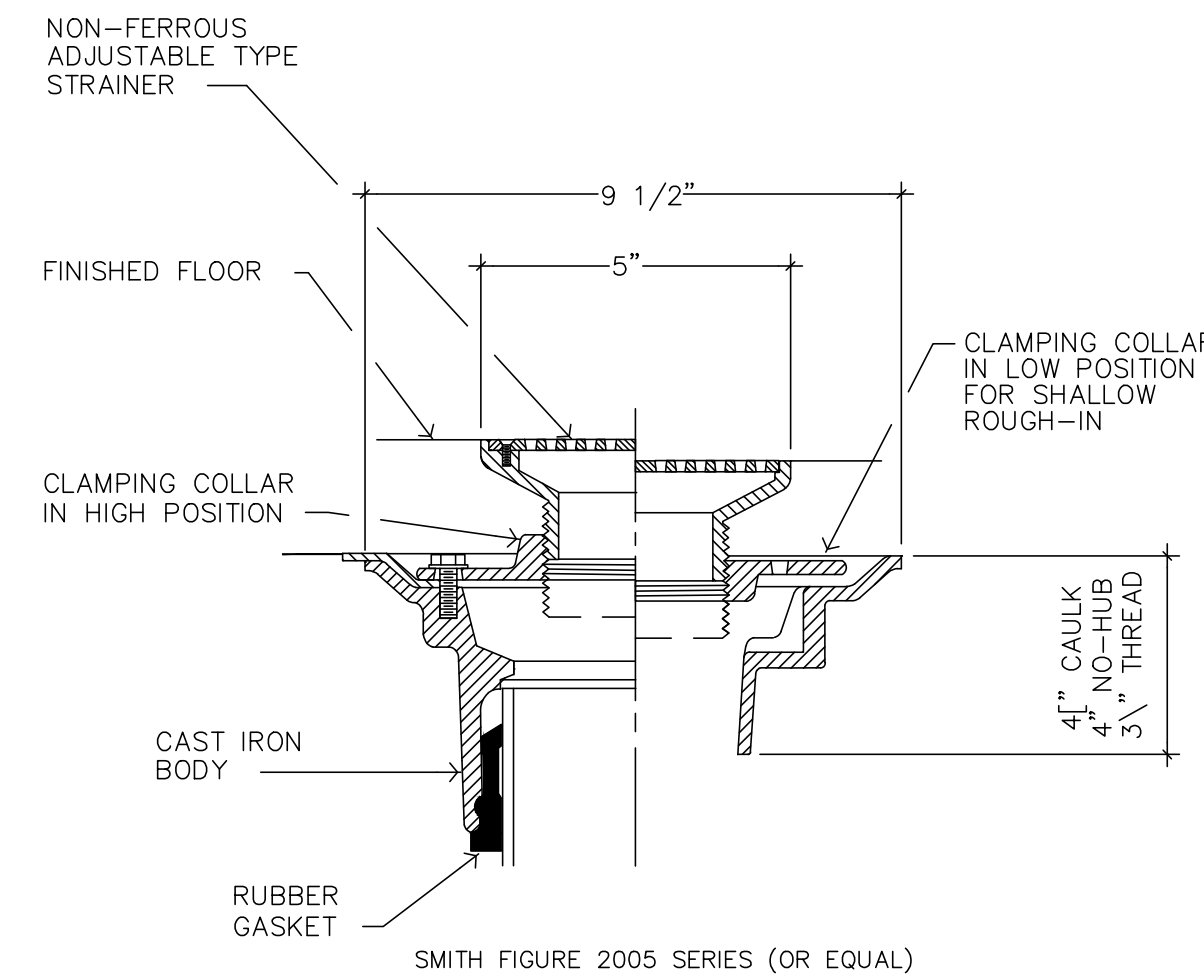
PLUMBING SYMBOLS	
SYMBOL	DESCRIPTION
---	SOIL OR WASTE
----	VENT PIPING
-----	COLD WATER PIPING
-----	HOT WATER PIPING
-----	HOT WATER RETURN PIPING
—G—	NATURAL GAS LINE
—C.O.—	CLEANOUT
—V.T.R.—	VENT THRU ROOF
—B.V.—	BALL VALVE
—P.O.C.—	POINT OF CONNECTION
—H.B.—	HOSE BIBB
—R.O.—	RISE OR DROP IN PIPING
—HWR—	HEATING HOT WATER RETURN
—HWS—	HEATING HOT WATER SUPPLY
—SD—	STORM DRAIN, RAINWATER
—SDO—	STORM DRAIN OVERFLOW
—W.C.—	WALL CLEANOUT (WCO)

NATURAL GAS SCHEDULE					
Fixture No.	Description	Location	Total Fixture BTUH	Total Fixture CF/HR	
RTU-1	ROOF TOP UNIT	MAIN FLOOR	75,000	84	
WH-1	WATER HEATER	MAIN FLOOR	150,000	169	
6	DRYER	MAIN FLOOR	68,000	76	
6	DRYER	MAIN FLOOR	68,000	76	
6	DRYER	MAIN FLOOR	68,000	76	
6	DRYER	MAIN FLOOR	68,000	76	
6	DRYER	MAIN FLOOR	68,000	76	
6	DRYER	MAIN FLOOR	68,000	76	
7	DRYER	MAIN FLOOR	106,000	119	
7	DRYER	MAIN FLOOR	106,000	119	
8	DRYER	MAIN FLOOR	175,000	197	
8	DRYER	MAIN FLOOR	175,000	197	
8	DRYER	MAIN FLOOR	175,000	197	
			Building Total BTUH = 1,370,000		
			Building Total CF/HR = 1,539		
			Total Developed Length = 140ft		

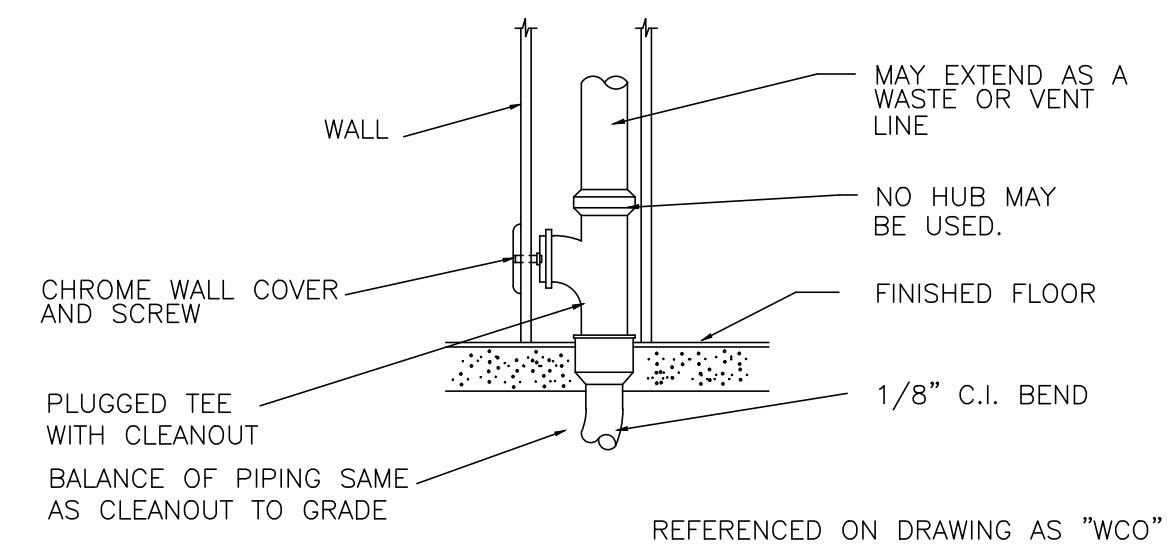
Gas Pressure = 5lb

GENERAL NOTES:

- WORKMANSHIP SHALL COMPLY WITH THE INTERNATIONAL PLUMBING CODE AND ALL OTHER LOCAL CODES, ORDINANCES AND ADA REQUIREMENTS.
- INSULATE ALL WATER LINES.
- SEE ARCHITECTS DRAWINGS FOR EXACT LOCATIONS OF ALL PLUMBING FIXTURES.
- VERIFY SEWER FLOW LINES PRIOR TO COMMENCEMENT OF WORK.
- COORDINATE ALL WORK WITH OTHER TRADES.
- PROVIDE PROPER PROVISIONS FOR EXPANSION OR MOVEMENT OF ANY PIPING.
- ALL FIXTURES SHALL BE PROPERLY VENTED TO THE ATMOSPHERE.
- PATCH ALL CUTTING OR DRILLING OF EXISTING FINISHED WALLS, CEILINGS, OR FLOORS.
- CONTRACTOR MUST COMPLY WITH ALL E.P.A. STANDARDS, INCLUDING LEAD FREE WATER SYSTEMS.

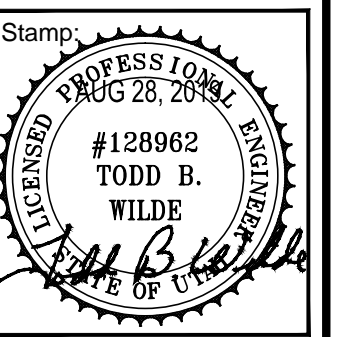
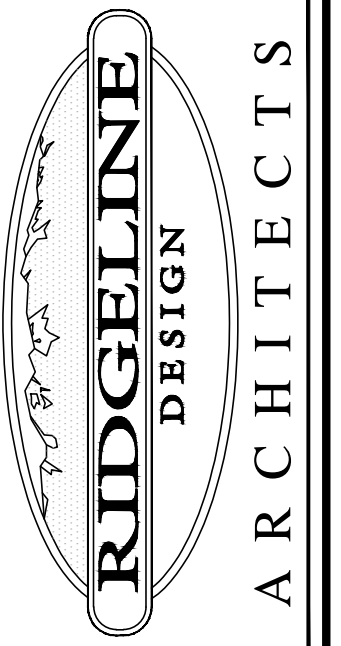


FLOOR DRAIN  
NOT TO SCALE



WALL CLEANOUT DETAIL  
NO SCALE

RIDGELINE DESIGN ARCHITECTS  
1708 EAST 5550 SOUTH #20  
SOUTH OGDEN, UT 84403  
PHONE: 801-392-6882 FAX: 801-621-1494  
www.ridgeline-design.com



Date: 8-6-2019  
Revisions:

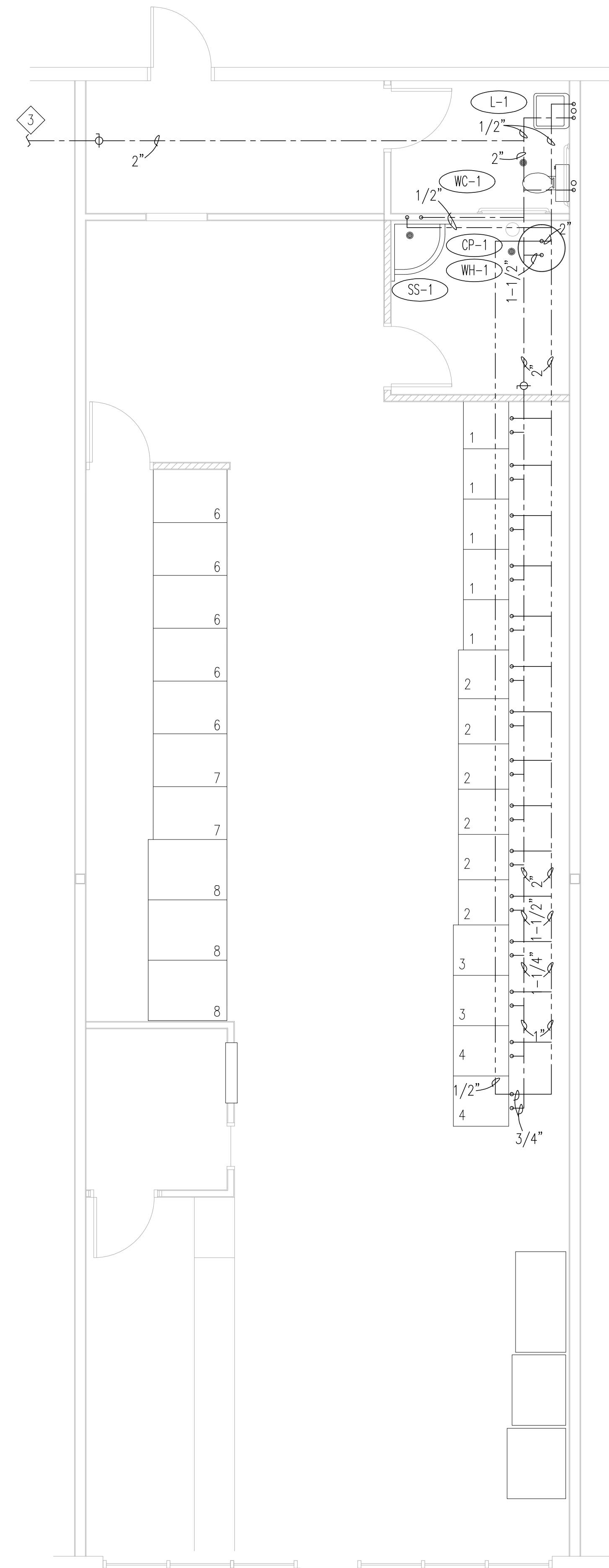
LAUNDRY MAT  
Tenant Improvement  
2064 S HARRISON  
OGDEN, UTAH

Project Number:  
1918

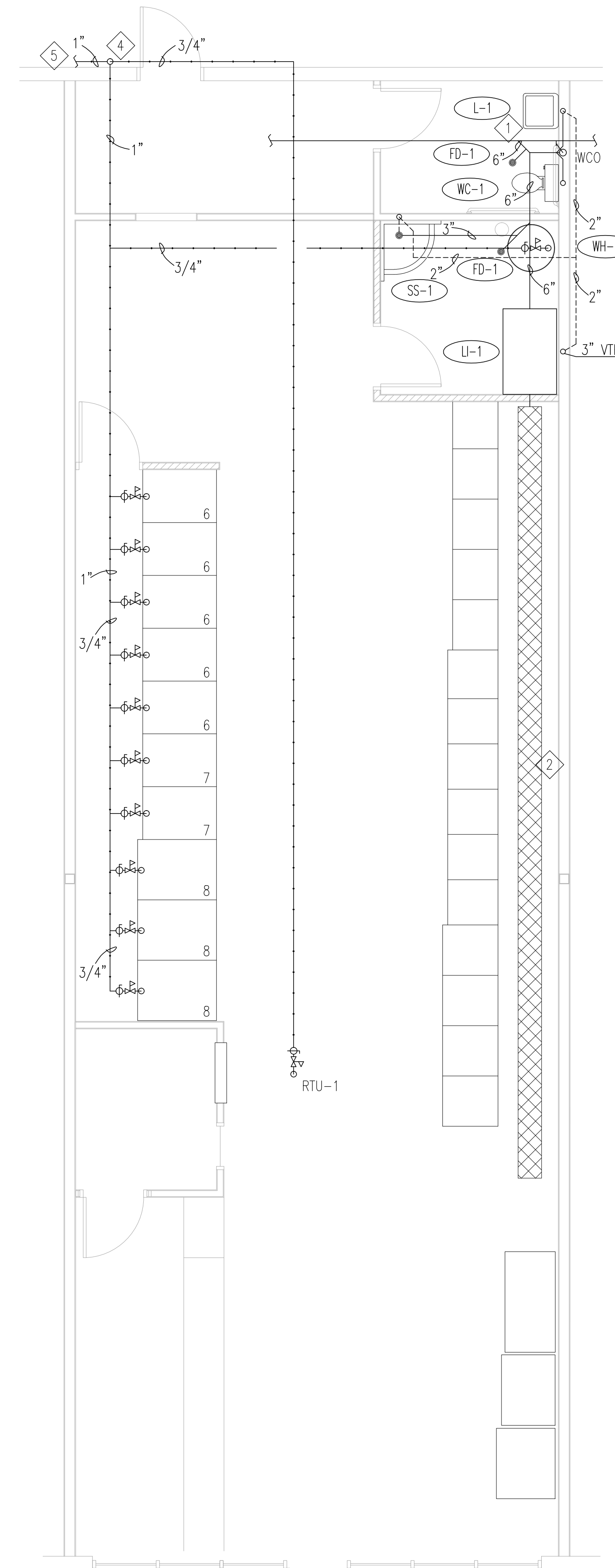
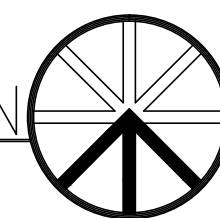
Sheet Title:  
PLUMBING  
SCHEDULES  
AND DETAILS

Sheet:

P001



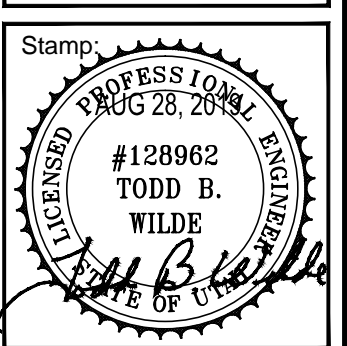
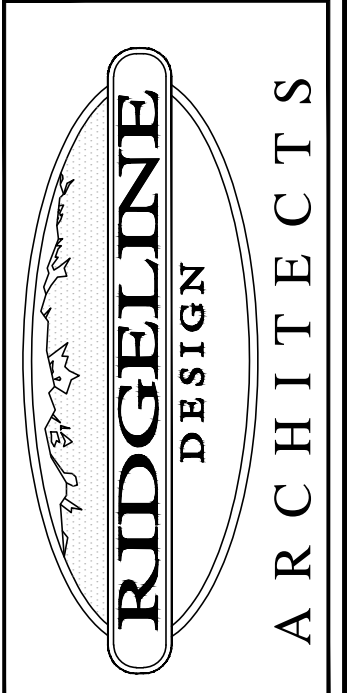
PLUMBING SUPPLY PLAN  
SCALE 1/4"=1'-0"



PLUMBING WASTE PLAN  
SCALE 1/4"=1'-0"



KEYED NOTES	
1	CONNECT TO EXISTING WASTE LINE.
2	TRENCH DRAIN BY OTHERS.
3	RUN 2" CW LINE. CONNECT TO EXISTING PRV STATION.
4	RISE 3/4" GAS LINE UP TO ROOF FOR RTU-1.
5	RUN 1" GAS LINE TO METER.



Date:  
8-6-2019  
Revisions:

**LAUNDRY MAT  
 Tenant Improvement**  
 2064 S HARRISON  
 OGDEN, UTAH

Project Number:  
1918

Sheet Title:  
PLUMBING  
FLOOR PLANS

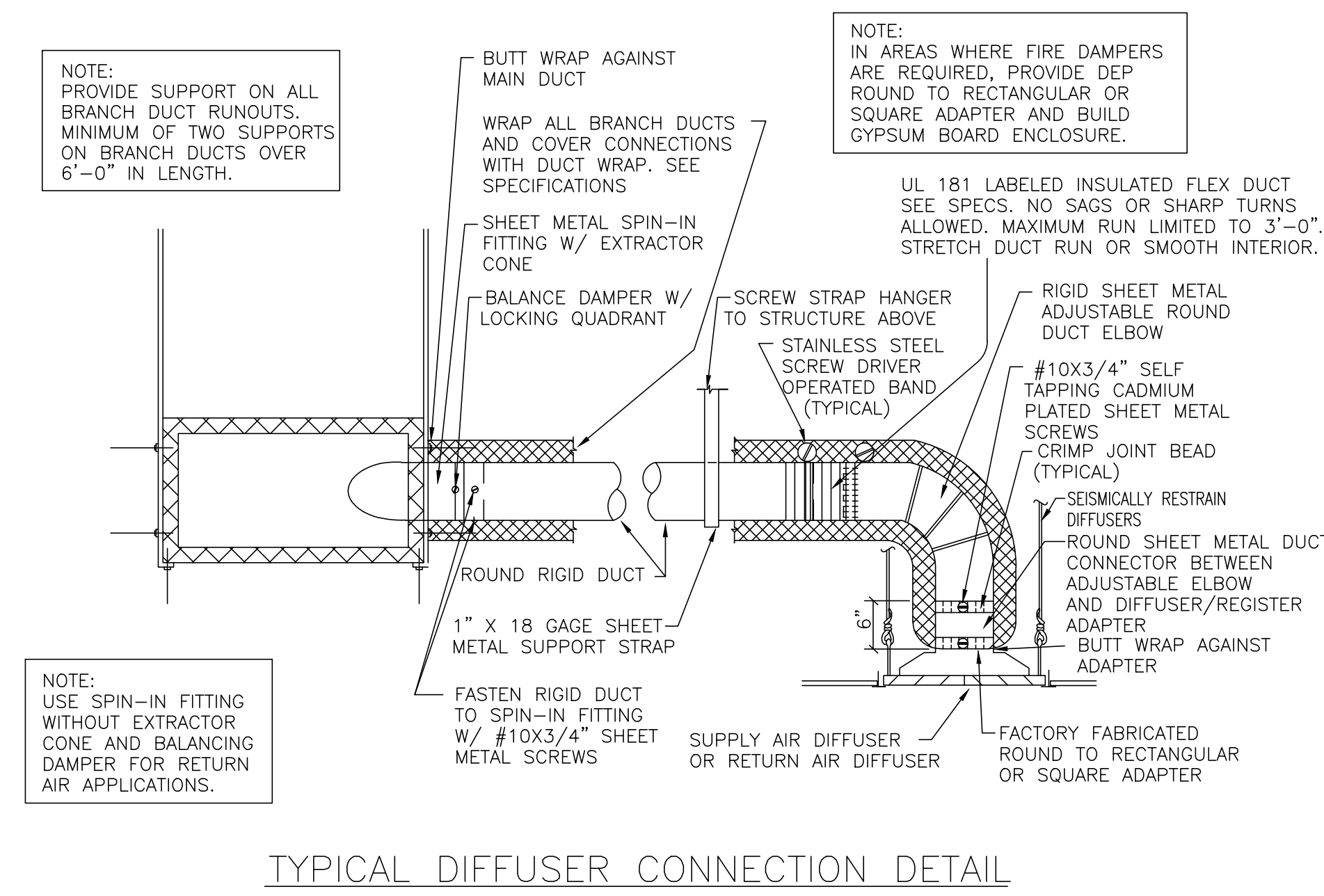
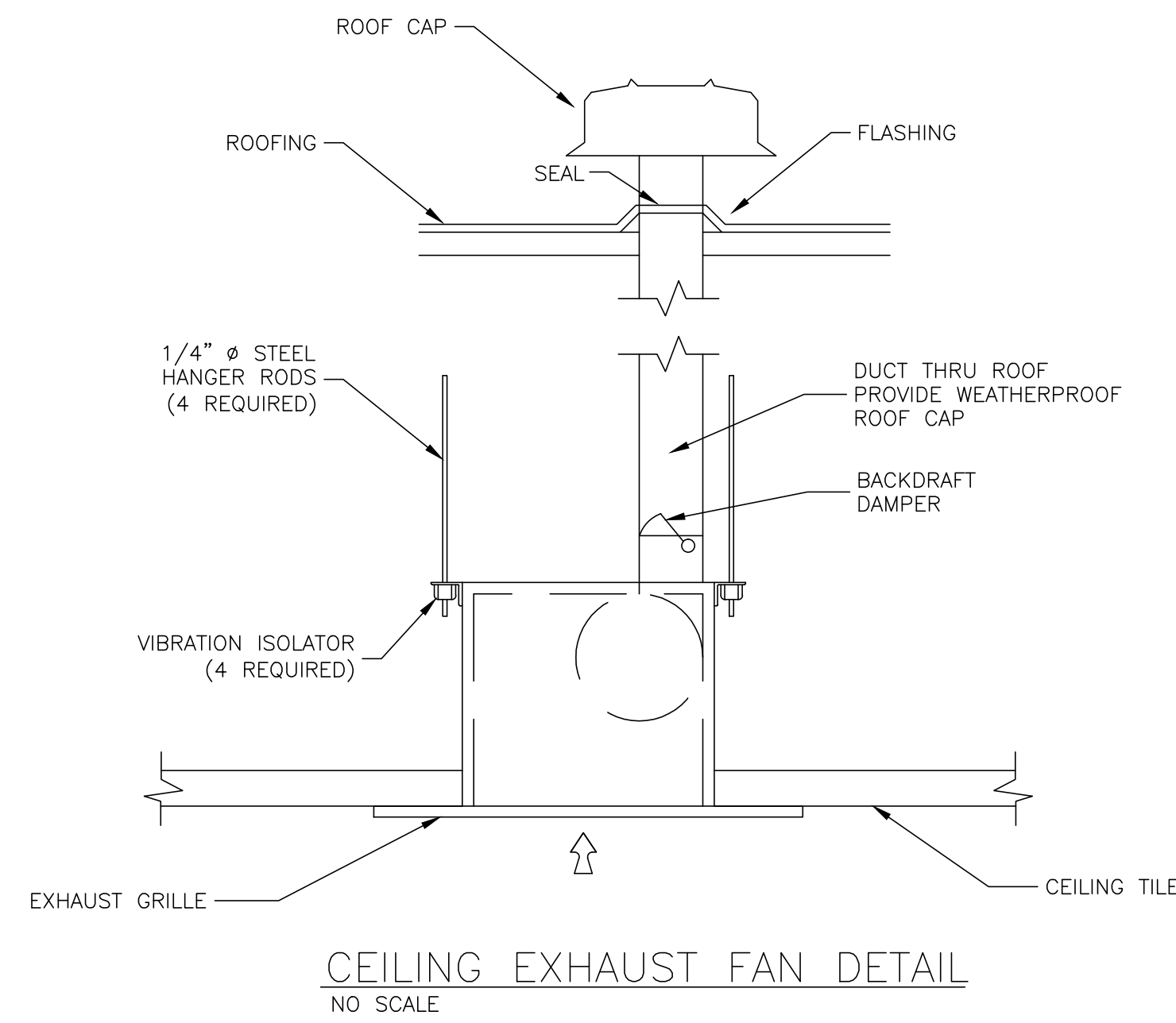
Sheet:  
**P101**



EXHAUST FAN SCHEDULE											
MARK	NO. REQ'D	SERVES	MANUFACTURER	MODEL No.	MIN. S.C.F.M. (#1)	STATIC PRESSURE			MOTOR		
						IN. W.G.	MIN. HP.	PHASE	HERTZ	VOLTS	MAX. RPM
EF-1	1	RESTROOM	GREENHECK	SP-224	128	0.5"	83WATTS	1	60	120	1000

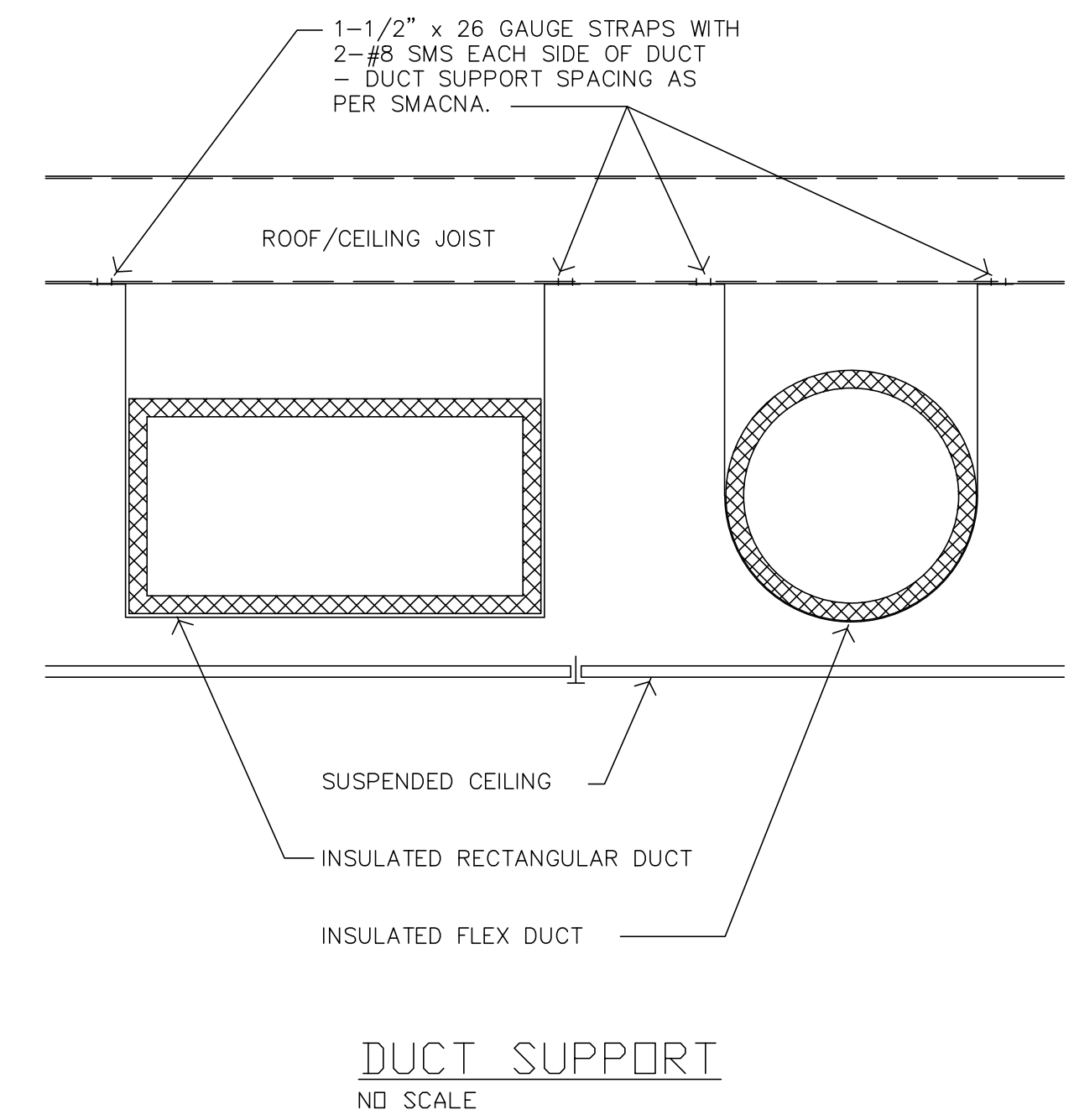
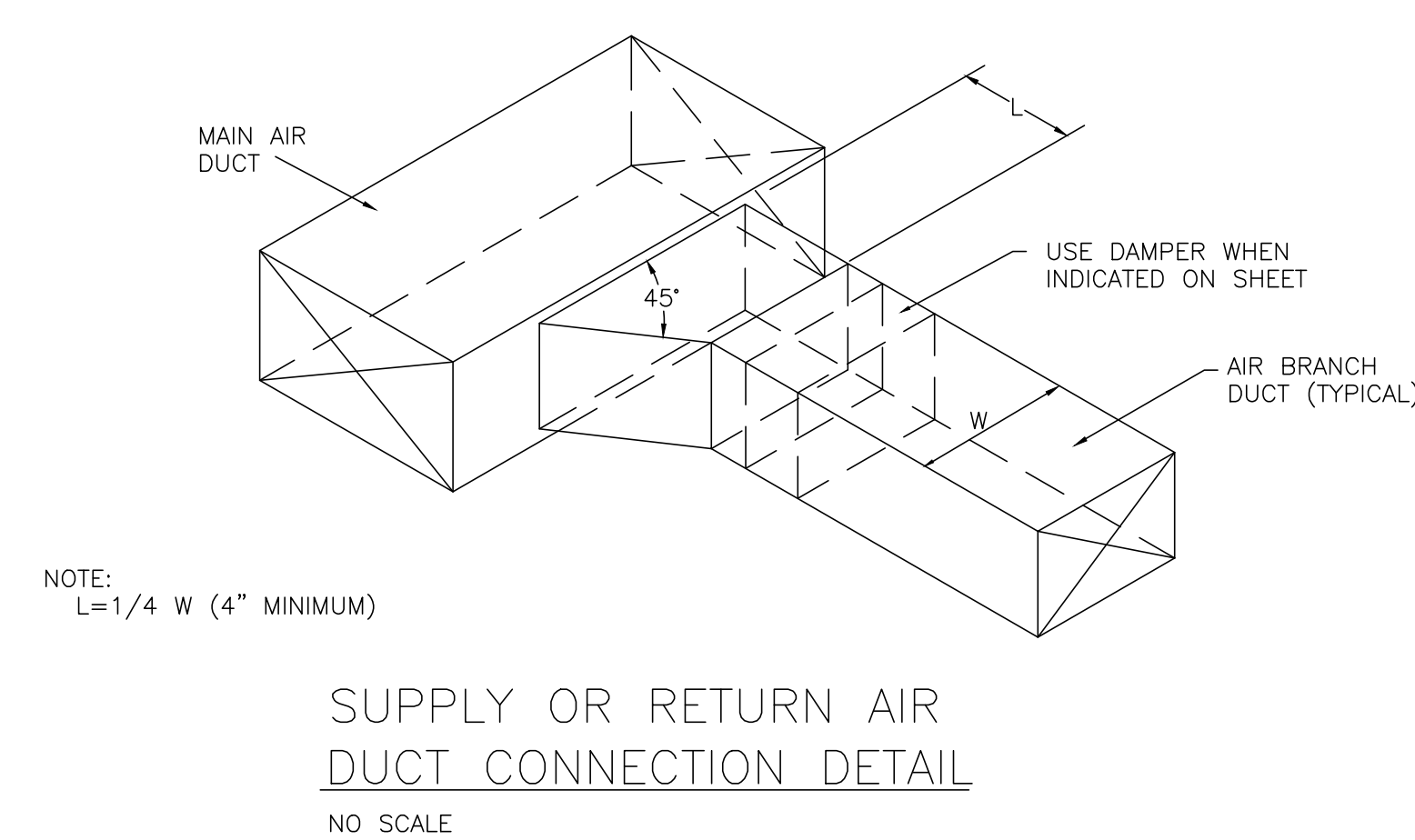
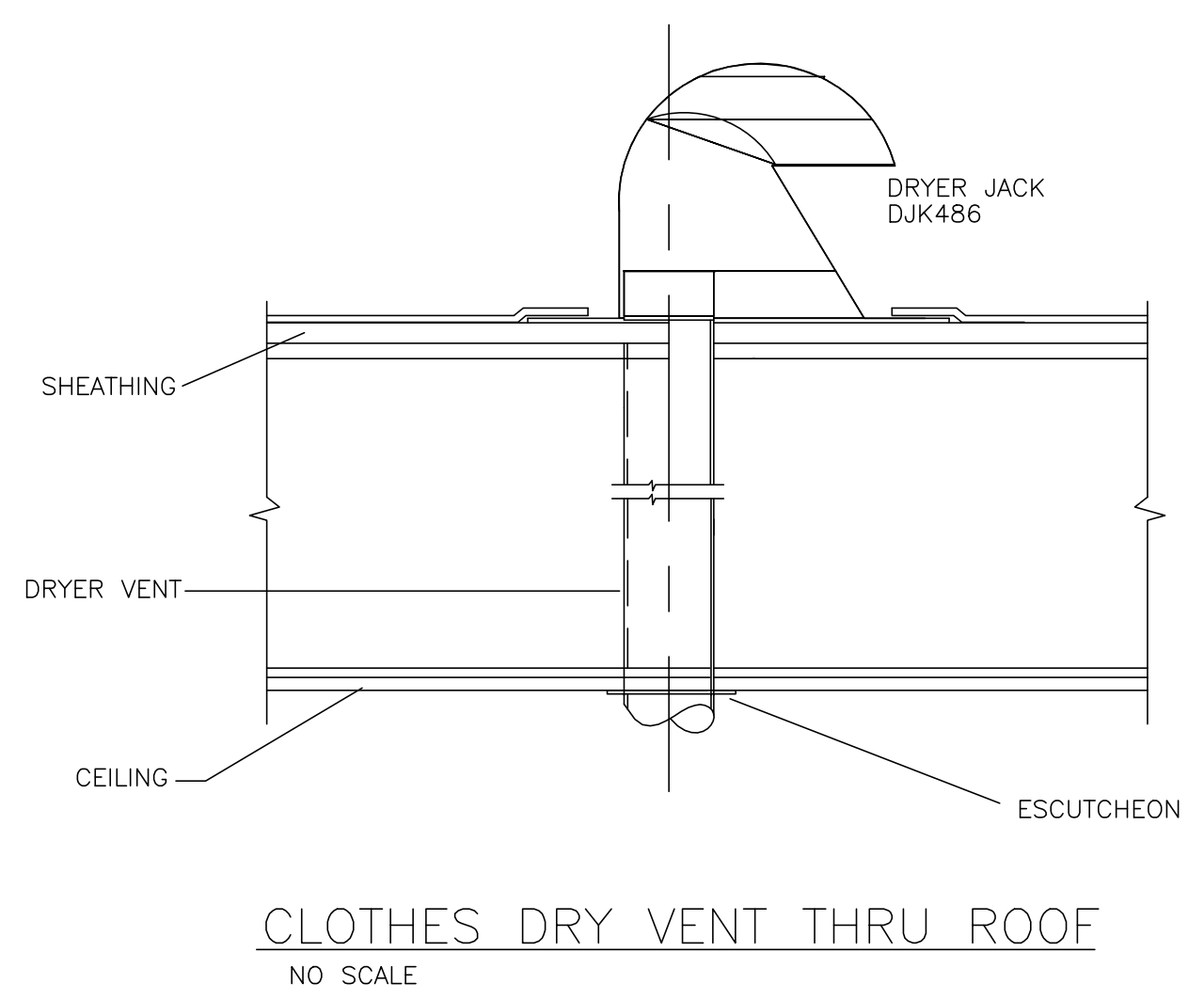
Notes:  
 (#1) = provide opposed blade damper in discharge of each fan and balance to cfm shown w/ back draft damper.  
 (#2) = provide roof or wall cap, as necessary.

DIFFUSER AND GRILLE SCHEDULE							
SYMBOL	MANUFACTURER AND MODEL NO.	MIN./MAX. CFM	BLOW	OVERALL SIZE	NECK SIZE	TYPE	ACCESSORIES AND REMARKS
D-1	TITUS TMS	0/130	4 WAY	24" x 24"	6" DIA	SUPPLY AIR	COORDINATE WITH CEILING
D-2	TITUS TMS	130/260	4 WAY	24" x 24"	8" DIA	SUPPLY AIR	COORDINATE WITH CEILING
D-3	TITUS TMS	260/400	4 WAY	24" x 24"	10" DIA	SUPPLY AIR	COORDINATE WITH CEILING
R-1	TITUS PXP	0/1000	N/A	24" x 12"	N/A	RETURN AIR	COORDINATE WITH CEILING

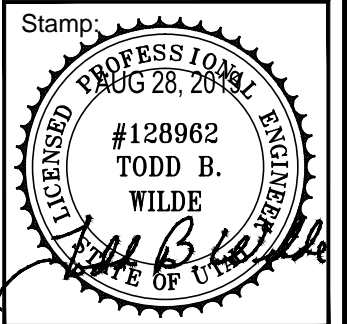
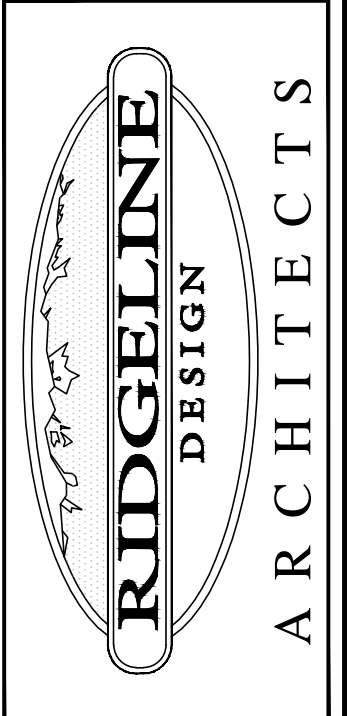


GENERAL NOTES:

- WORKMANSHIP SHALL COMPLY WITH THE INTERNATIONAL MECHANICAL CODE AND ALL OTHER LOCAL CODES AND ORDINANCES.
- THE FANS SHALL BE DERATED FOR THE ELEVATION OF THE JOB SITE TO DELIVER THE REQUIRED CFM OF AIR SHOWN ON DRAWINGS.
- DIMENSIONS SHOWN ON DRAWINGS FOR DUCTWORK ARE INSIDE CLEAR. FIELD VERIFY ALL DIMENSIONS BEFORE FABRICATING DUCTWORK.
- ALL DUCTWORK, INCLUDING FIRE DAMPERS, SHALL BE SEALED AND TESTED FOR LEAKS PRIOR TO COVERING WORK.
- INSTALL FIRE DAMPERS IN ALL DUCTWORK THROUGH FIRE RATED ASSEMBLIES.
- ALL RECTANGULAR DUCTWORK SHALL BE LINED. ALL ROUND DUCTWORK SHALL BE WRAPPED WITH DUCT INSULATION.
- ALL CONTROL WIRING SHALL BE RUN IN CONDUIT. SEE DIVISION 16 FOR WIRING METHODS, CONDUIT, BOX SUPPORT, ETC.
- COORDINATE WORK WITH OTHER TRADES. COORDINATE ALL EQUIPMENT WITH CONTROL SYSTEM FOR A COMPLETE OPERABLE SYSTEM.
- PATCH ALL CUTTING OR DRILLING OF EXISTING FINISHED WALLS, CEILINGS, OR FLOORS.
- UPON COMPLETION OF WORK, AN INDEPENDENT CERTIFIED TEST & BALANCE ENGINEER SHALL BALANCE ALL SYSTEMS, CHECK OPERATION OF ALL CONTROLS, AND SUBMIT A WRITTEN AIR TEST & BALANCE AND OPERATION OF CONTROLS REPORT TO ARCHITECT/ENGINEER ALONG WITH O&M MANUALS.
- CONTRACTOR SHALL INSTALL ANY BALANCING DEVICE NECESSARY TO ACHIEVE PROPER ADJUSTING AND BALANCING OF MECHANICAL SYSTEMS.
- FIELD VERIFY ALL UNDERGROUND UTILITIES, PIPE LINES, ETC. PRIOR TO DIGGING. MECHANICAL CONTRACTOR IS RESPONSIBLE FOR ALL DAMAGE AND REPAIR OF UTILITIES, PIPE LINES, ETC. DAMAGED DURING CONSTRUCTION.
- ALL AUTOMATIC OR MOTORIZED CONTROL DAMPERS AND ACTUATORS NOT FURNISHED WITH PACKAGED EQUIPMENT SHALL BE FURNISHED BY CONTROL CONTRACTOR AND INSTALLED BY MECHANICAL CONTRACTOR.
- ALL AUTOMATIC CONTROL VALVES SHALL BE FURNISHED BY CONTROL CONTRACTOR AND INSTALLED BY MECHANICAL CONTRACTOR.
- SEE STRUCTURAL DRAWINGS FOR HANGING FROM ROOF TRUSSES OR FLOOR JOISTS.



**RIDGELINE DESIGN ARCHITECTS**  
 1708 EAST 5550 SOUTH #20  
 SOUTH OGDEN, UT 84403  
 PHONE: 801-392-6882 FAX: 801-621-1494  
 www.ridgeline-design.com



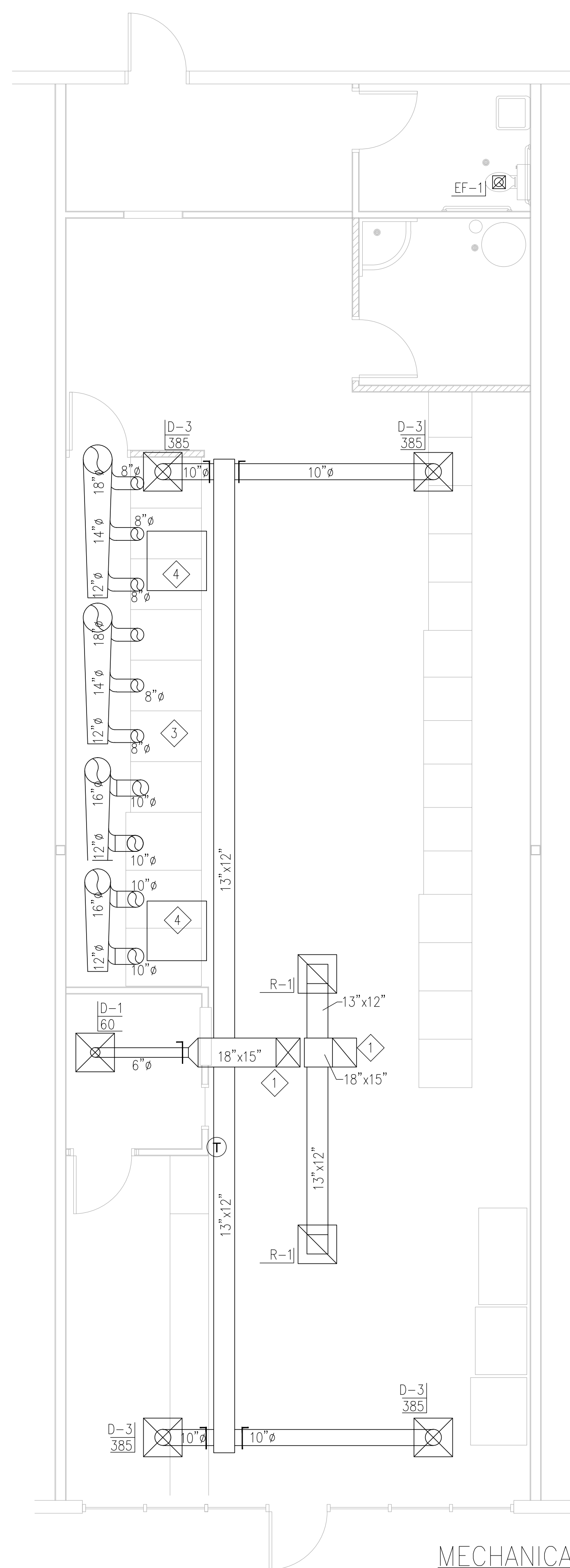
Date: 8-6-2019  
 Revisions:

**LAUNDRY MAT**  
 Tenant Improvement  
 2064 S HARRISON  
 OGDEN, UTAH

Project Number: 1918

Sheet Title: MECHANICAL SCHEDULES AND DETAILS

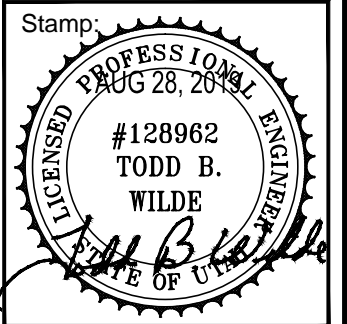
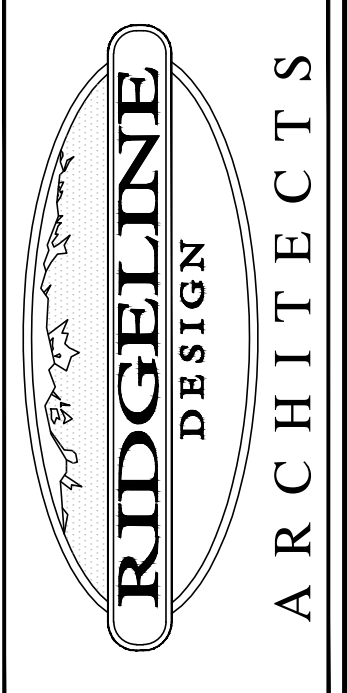
Sheet: M001



- KEYED NOTES**
- ① DUCT UP TO ROOF. CONNECT TO EXISTING 4 TON ROOF TOP UNIT.
  - ② 18" EXHAUST, VENT THRU ROOF.
  - ③ FOR VENTING OF DRYERS SEE MANUFACTURER'S INSTRUCTIONS.
  - ④ 37"x37" PENTHOUSE ON ROOF FOR FRESH AIR.

MECHANICAL FLOOR PLAN  
SCALE 1/4"=1'-0"

**RIDGELINE DESIGN ARCHITECTS**  
1708 EAST 5550 SOUTH #20  
SOUTH OGDEN, UT 84403  
PHONE: 801-392-6882 FAX: 801-621-1494  
www.ridgeline-design.com



Date:  
8-6-2019  
Revisions:

**LAUNDRY MAT**  
**Tenant Improvement**  
2064 S HARRISON  
OGDEN, UTAH

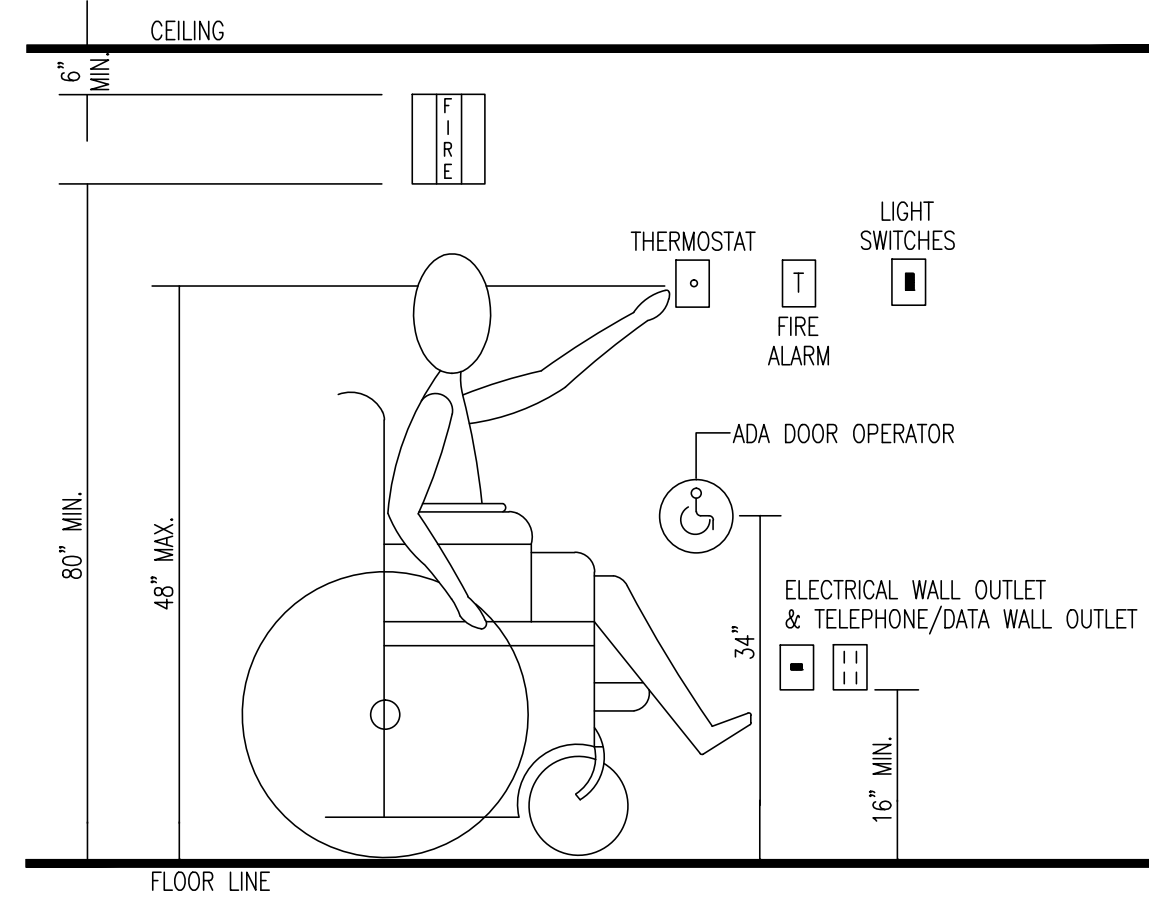
Project Number:  
1918

Sheet Title:  
**MECHANICAL FLOOR PLAN**

Sheet:  
**M101**

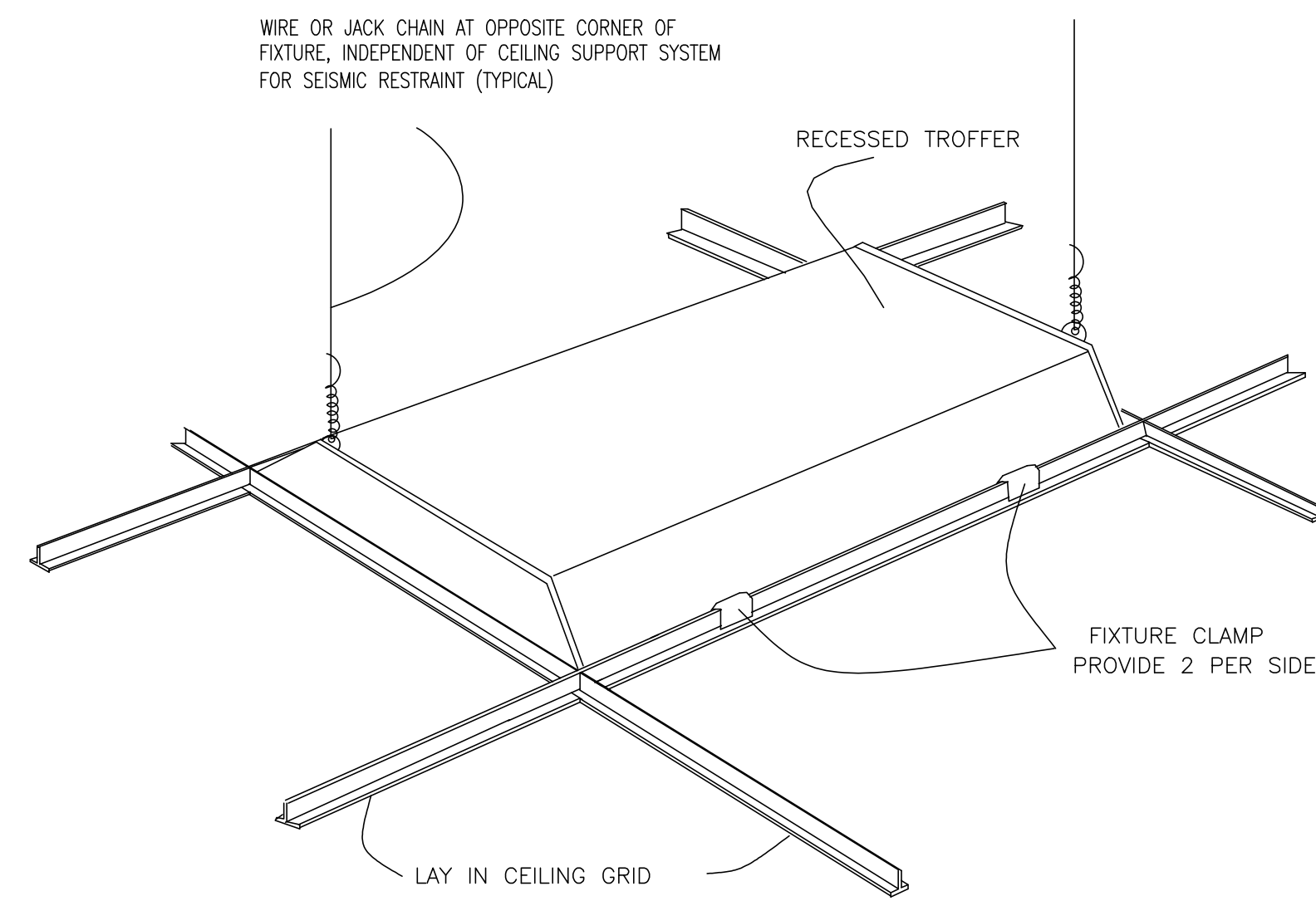
Original drawings remain the property of Ridgeline Design Architects and as such Ridgeline Design Architects retains and reserves all copyright and control. The design represented by these drawings is valid for the client for a set time and under certain conditions given upon its signing by Ridgeline Design Architects.





HANDICAP MOUNTING HEIGHTS DETAIL

NO SCALE



TYPICAL RECESSED FIXTURE MOUNTING DETAIL

NO SCALE

LIGHT FIXTURE SCHEDULE

FIXTURE CALL OUT	MANUFACTURER	CATALOG #	DESCRIPTION	LAMPS	NOTES
F1	LITHONIA	2BLT4 40L ADP EZ1 LP840	2x4 INDIRECT/DIRECT	34W LED	
F1E	LITHONIA	2BLT4 40L ADP EZ1 LP840 EL14	2x4 INDIRECT/DIRECT	34W LED	WITH 1400 LUMEN EMERGENCY BATTERY PACK
F2	LITHONIA	STL4 40L EZ1 LP840	1x4 SURFACE MOUNT	34W LED	
F2E	LITHONIA	STL4 40L EZ1 LP840 EL14L	1x4 SURFACE MOUNT	34W LED	WITH 1400 LUMEN EMERGENCY BATTERY PACK
EX1	LITHONIA	LQMSW3G120/277ELN	EXITS	LED	
EX2	LITHONIA	AFN W EXT	EXTERIOR EXT LIGHT	LED	

PANELBOARD SCHEDULE

PANEL: A NEMA 1 Enclosure 120 / 208 VOLT 3  $\Phi$  4 Wire 250 A Bus

- Main Lugs Only     Fusible     Copper Bus     Ground Bus     Surface Mounted  
 Main Breaker 250 A     Bolt-On     Aluminum Bus     Iso. Ground Bus     Flush Mounted  
 Plug-On

Item	Amp	Pole	Cir No.	Left Phase Load			Right Phase Load			Cir No.	Amp	Pole	Item
				A	B	C	A	B	C				
NORTH WALL			1						2			SIGN	
BATH GFI	1	20	3			500			4			SOUTH SIDE LIGHTS	
SOUTH WALL			5						6			NORTH SIDE LIGHTS	
RTU-6			7				2,400		8	30	3	WASHER	
"			9					2,400	10	"	"	"	
"			11						12	"	"	"	
HVAC OUTLET			13				2,400		14	30	3	WASHER	
LIGHTS	1	20	15			476		2,400	16	"	"	"	
OUTLET	1	20	17			720			18	"	"	"	
OUTLET	1	20	19			720	948		20	20	3	WASHER	
OUTLET	1	20	21			720		948	22	"	"	"	
WATER HEATER/PUMP	1	20	23			500			24	"	"	"	
WASHER	1	20	25			216		900	26	20	1	DRYER	
WASHER	20	3	27			1,800		400	28	20	1	DRYER	
"	"	"	29			1,800		1,650	30	20	1	DRYER	
"	"	"	31			1,800		1,650	32	20	1	DRYER	
WASHER	20	3	33			1,800		1,920	34	20	1	DRYER	
"	"	"	35			1,800			36				
"	"	"	37			1,800			38				
"	"	"	39						40				
"	"	"	41						42				
				4,536	5,296	4,820	8,298	8,068	7,398				
Total Amp / Phase				12,834	13,364	12,218							
Total Connected Load:				107	111	102	38,416 VA						

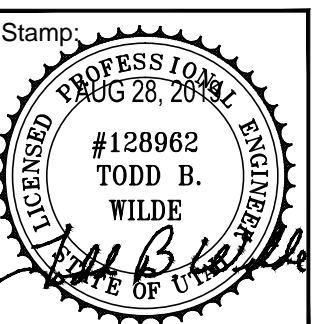
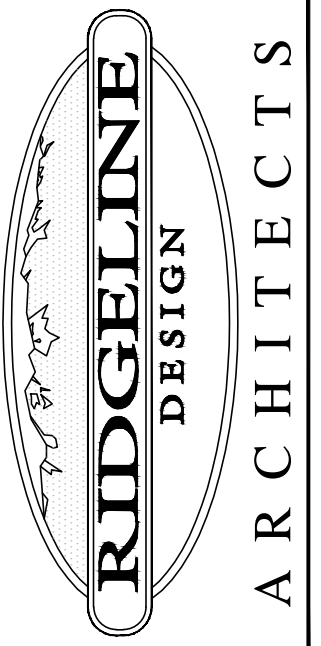
GENERAL NOTES:

- WORKMANSHIP SHALL COMPLY WITH THE NATIONAL ELECTRICAL CODE AND ALL OTHER LOCAL CODES AND ORDINANCES.
- COORDINATE ALL WORK WITH OTHER TRADES.
- SEE ARCHITECTS DRAWINGS FOR EXACT LOCATION OF ALL LIGHT FIXTURES.
- ELECTRICAL CONTRACTOR TO MAKE ALL FINAL ELECTRICAL CONNECTIONS TO ELECTRICAL AND MECHANICAL EQUIPMENT.
- PATCH ALL CUTTING OR DRILLING OF EXISTING FINISHED WALLS, CEILINGS, OR FLOORS.
- ELECTRICAL CONTRACTOR SHALL FURNISH AND INSTALL ALL MOTOR STARTERS AND THERMAL UNITS EXCEPT THOSE FURNISHED AS PART OF PACKAGED AIR CONDITIONING EQUIPMENT.
- CONTRACTOR SHALL INSTALL RIGID METAL CONDUIT WRAPPED WITH 3-M CORROSIVE RESISTANT TAPE WHEN CONVERTING FROM UNDERGROUND OR UNDER SLAB PVC CONDUIT TO ABOVE GROUND METAL CONDUIT.
- ALL CONDUIT FOR POWER AND DATA WILL BE A MINIMUM SIZE OF 3/4"

RIDGELINE DESIGN ARCHITECTS

1708 EAST 5550 SOUTH #20  
SOUTH OGDEN, UT 84403  
PHONE: 801-392-6882 FAX: 801-621-1494  
www.ridgeline-design.com

Original drawings remain the property of Ridgeline Design Architects and no part of these drawings may be reproduced or transmitted in any form or by any means, electronic, mechanical, photocopying, recording, or by any information storage and retrieval system, without the prior written permission of Ridgeline Design Architects.



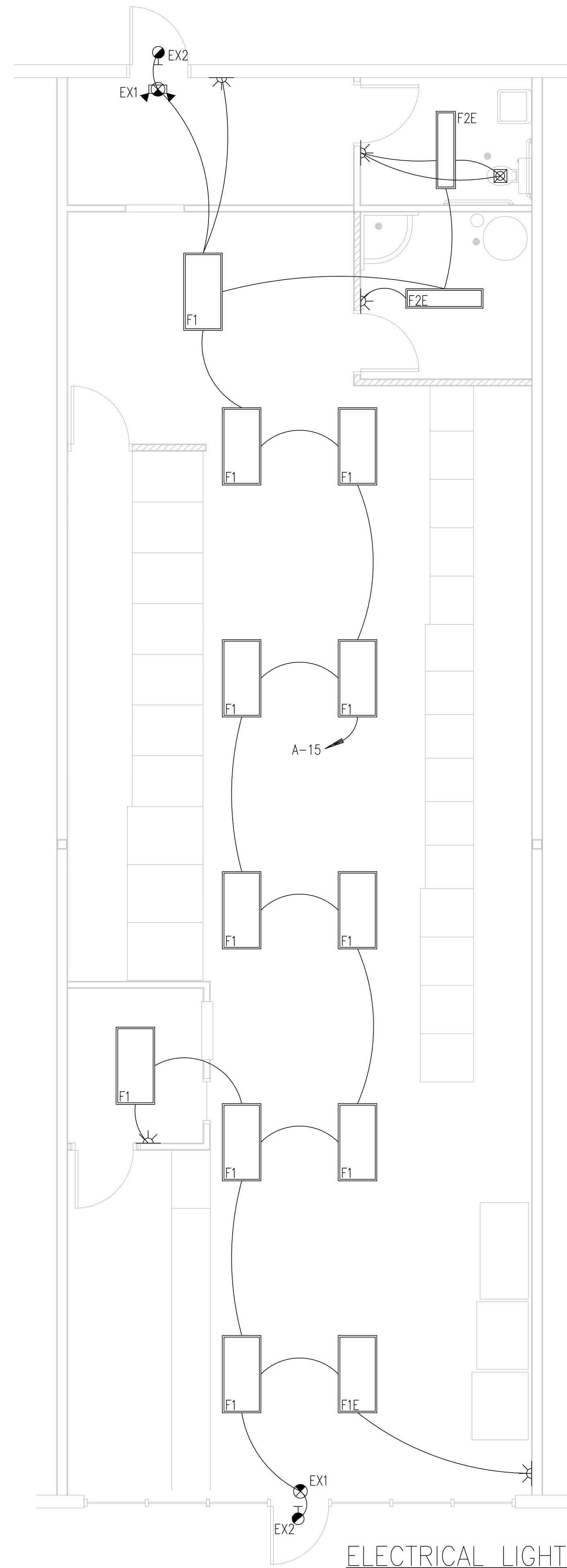
Date: 8-6-2019  
Revisions:

LAUNDRY MAT  
Tenant Improvement  
2064 S HARRISON  
OGDEN, UTAH

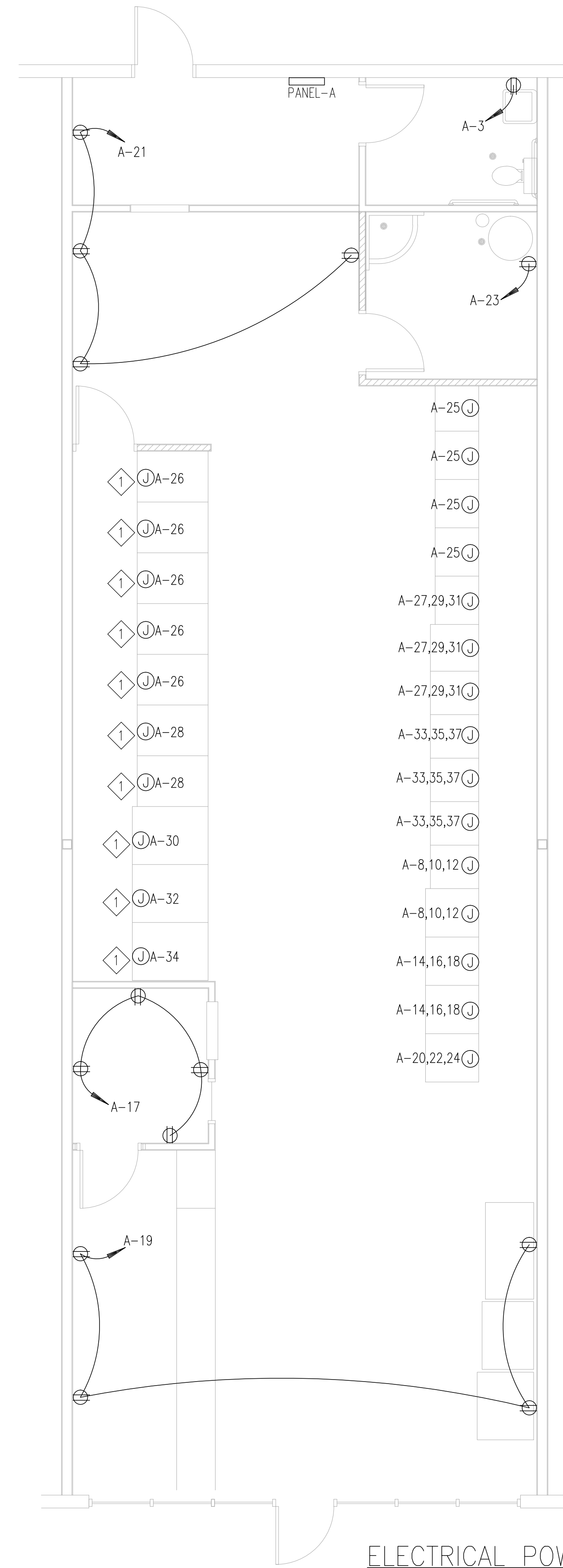
Project Number: 1918

Sheet Title: ELECTRICAL SCHEDULES AND DETAILS

Sheet: E001



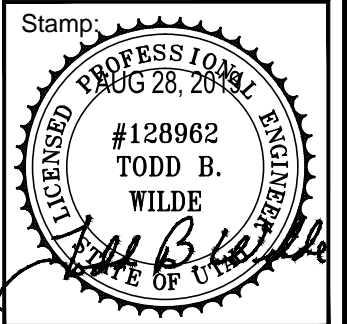
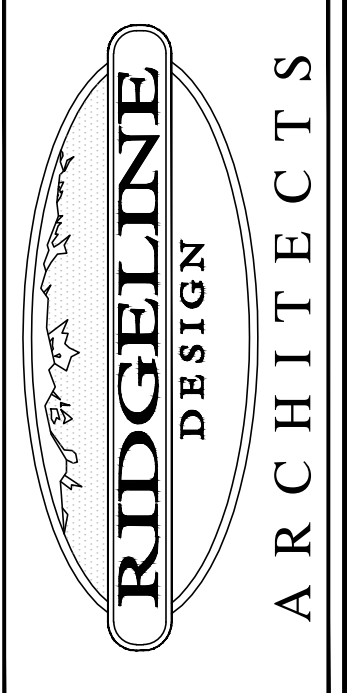
ELECTRICAL LIGHTING PLAN  
SCALE 1/4"=1'-0"



ELECTRICAL POWER PLAN  
SCALE 1/4"=1'-0"

KEYED NOTES	
Ⓛ	COORDINATE AMPERAGE WITH DRYER MANUFACTURER.

**RIDGELINE DESIGN ARCHITECTS**  
 1708 EAST 5550 SOUTH #20  
 SOUTH OGDEN, UT 84403  
 PHONE: 801-392-6882 FAX: 801-621-1494  
 www.ridgeline-design.com



Date:  
8-6-2019  
Revisions:

**LAUNDRY MAT**  
**Tenant Improvement**  
 2064 S HARRISON  
 OGDEN, UTAH

Project Number:  
1918

Sheet Title:  
ELECTRICAL  
FLOOR PLANS

Sheet:  
E101

Original drawings remain the property of Ridgeline Design Architects and are not to be reproduced, copied, or transmitted in any form or by any means, electronic or mechanical, including photocopying, recording, or by any information storage and retrieval system, without the prior written permission of Ridgeline Design Architects.