



ADDENDUM

Date Issued:	Feb 27, 2019
Project:	Intermountain Healthcare Park City Hospital – Level 1 Registration Remodel 900 Round Valley Dr. Park City, Utah 84060
Addendum Number:	1

The Contractors submitting proposals on the above-captioned project shall be governed by the following addendum, changes and explanations to the drawings and specifications and shall submit their bids in accordance therewith.

Item Number	General Items Description
1	See attached drawings for the Board Room Remodel. Please add this as Add Alternate # 4 to your bid proposal.



INTERMOUNTAIN PARK CITY HOSPITAL BOARD ROOM REMODEL

INTERMOUNTAIN HEALTHCARE
900 ROUND VALLEY DR, PARK CITY, UT 84060

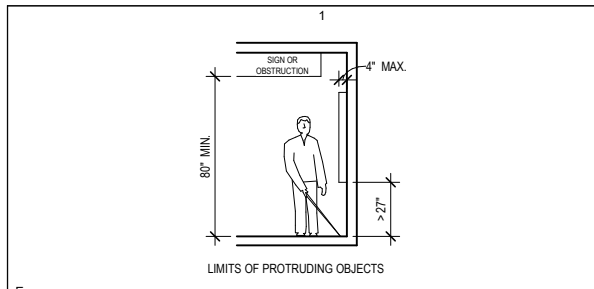


524 SOUTH 600 EAST
SALT LAKE CITY, UT 84102
801.575.8800 | VCBO.COM

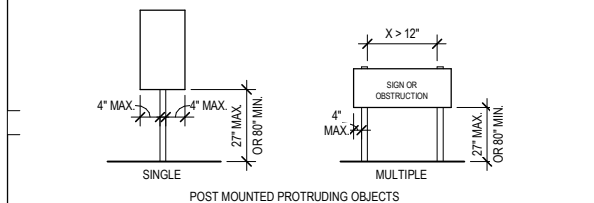
electrical engineer
SPECTRUM ENGINEERS, INC.
324 SOUTH STATE STREET, SUITE 400
SALT LAKE CITY, UT 84111
www.spectrum-engineers.com
801.328.5151



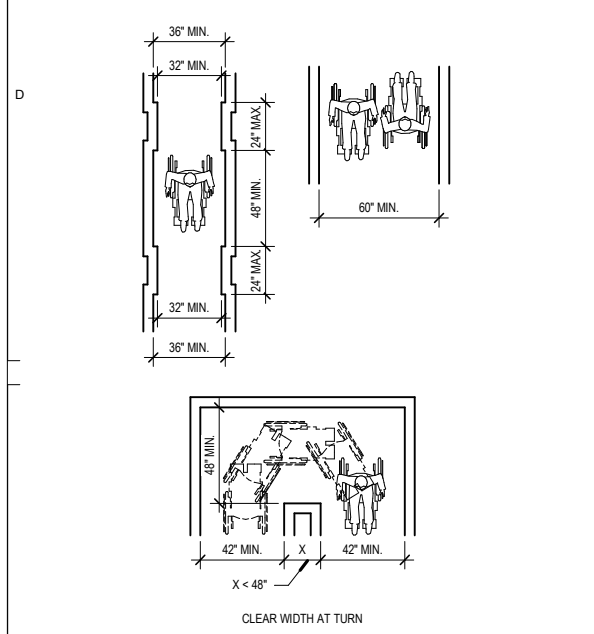
CONSTRUCTION DOCUMENTS
04-11-2018



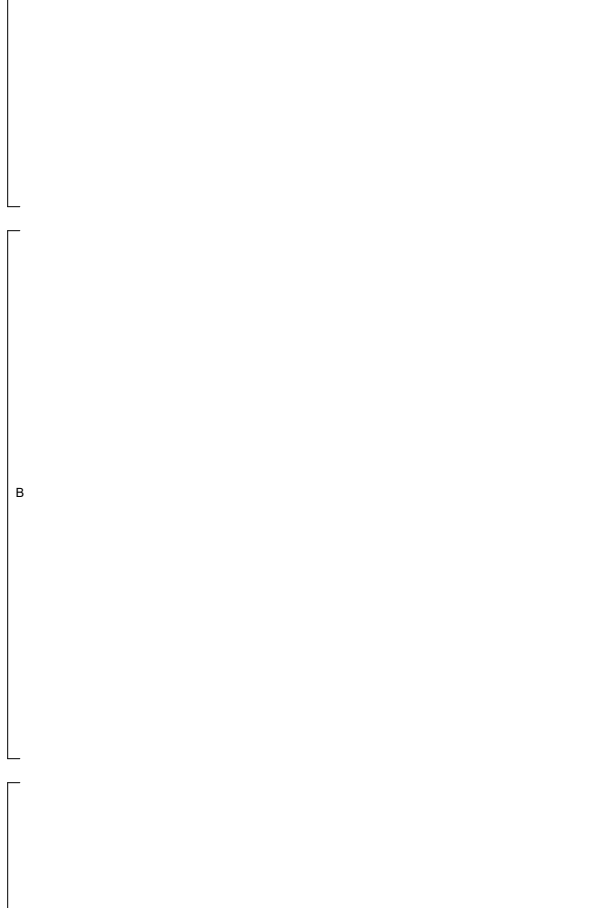
307.3 POST-MOUNTED OBJECTS. OBJECTS ON POSTS OR PYLONS SHALL BE PERMITTED TO OVERHANG 4 INCHES MAXIMUM WHERE MORE THAN 27 INCHES AND NOT MORE THAN 80 INCHES ABOVE THE FLOOR. OBJECTS ON MULTIPLE POSTS OR PYLONS WHERE THE CLEAR DISTANCE BETWEEN THE POSTS OR PYLONS IS GREATER THAN 12 INCHES SHALL HAVE THE LOWEST EDGE OF SUCH OBJECT EITHER 27 INCHES MAXIMUM OR 80 INCHES MINIMUM ABOVE THE FLOOR.



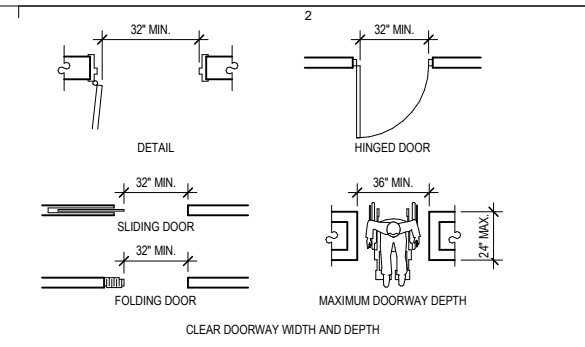
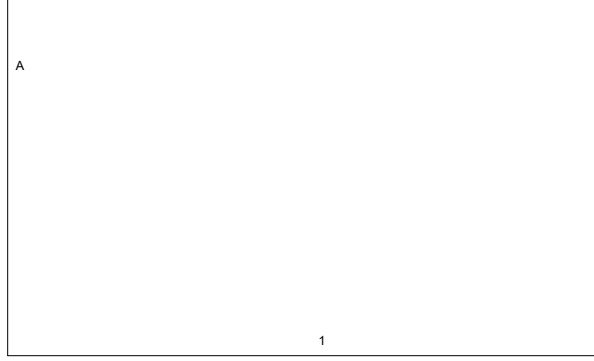
307. PROTRUDING OBJECTS



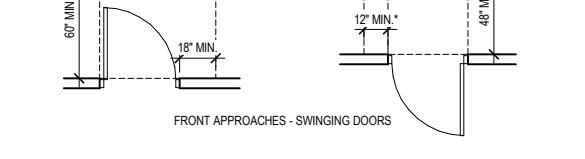
403. ACCESSIBLE ROUTES



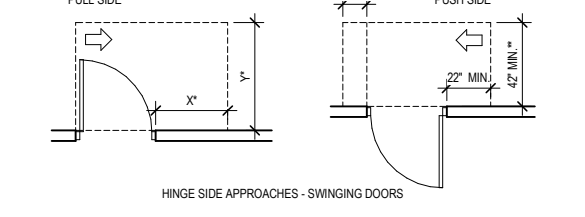
404. DOORS AND DOORWAYS



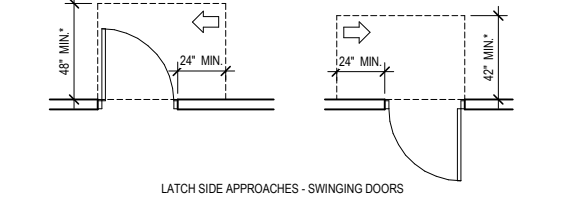
307. HINGED DOORS



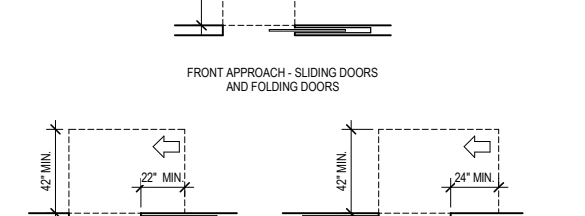
307. FRONT APPROACHES - SWINGING DOORS



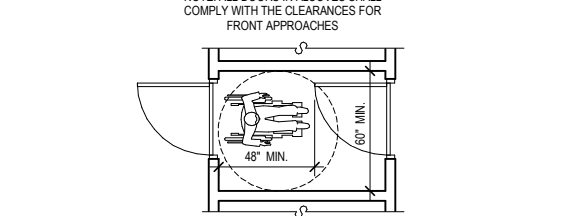
307. HINGE SIDE APPROACHES - SWINGING DOORS



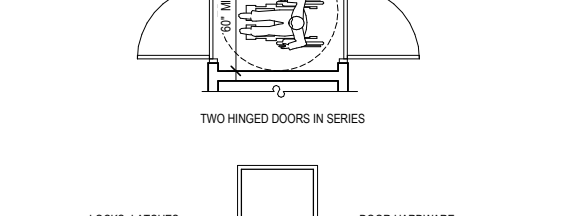
307. LATCH SIDE APPROACHES - SWINGING DOORS



307. FRONT APPROACH - SLIDING DOORS AND FOLDING DOORS



307. POCKET OR HINGE APPROACH - SLIDING DOORS AND FOLDING DOORS



307. TWO HINGED DOORS IN SERIES



307. LOCKS, LATCHES, PULLS, EXIT DEVICES

ABBREVIATIONS

& @	AND AT	EJ	EXPANSION JOINT	LAV	LAVATORY	REFG	REFRIGERATOR
ACT	ACOUSTICAL CEILING TILE	ELEC	ELECTRICAL	LB/	LBS POUND (S)	REIN	REINFORCE (ED)
ADJ	ADJUSTABLE	ELEV	ELEVATION	EQ	EQUAL	REPL	REPLACE
AFF	ABOVE FINISH FLOOR	EQUIP	EQUIPMENT	MAX	MAXIMUM	REQD	REQUIRED
ALT	ALTERNATE	EVAP	EVAPORATIVE	MECH	MEDIUM DENSITY FIBERBOARD	REV	REVISION (S)
ALUM	ALUMINUM	EXST	EXISTING	MEMB	MEMBRANE	RM	ROOM
APPROX	APPROXIMATE	EXP	EXPANSION	MEZZ	MEZZANINE	RO	ROUGH OPENING
ARCH	ARCHITECTURAL	EXT	EXTERIOR	MFR	MANUFACTURER	S	SOUTH
BD	BOARD	EWC	ELECTRIC WATER COOLER	MGR	MANAGER	SALV	SALVAGE (ED)
BLDG	BUILDING	FA	FIRE ALARM	MIN	MINIMUM	SECT	SECTION
BLK	BLOCK (ING)	FD	FLOOR DRAIN	MIR	MIRROR	SQ	SQUARE FOOT
BO	BOTTOM OF	FDN	FOUNDATION	MISC	MISCELLANEOUS	SIM	SIMILAR
BRG	BEARING	FE	FIRE EXTINGUISHER	MO	MASONRY OPENING	SLNT	SLANT
BSMT	BASEMENT	FEC	FIRE EXTINGUISHER CABINET	MOUNT, (ED)	MOUNT, (ED)	SPEC	SPECIFICATION (S)
BW	BOTH SIDES	FG	FINISH GRADE	MTL	METAL	SQ	SQUARE
CAB	CABINET	FH	FIRE HYDRANT	MW	MICROWAVE	SS	STAINLESS STEEL
CB	CATCH BASIN	FIN	FINISHED	N	NORTH	STD	STANDARD
CCSA	CUSTOM COLOR SELECTED BY ARCHITECT	FLR	FLOOR	NIC	NOT IN CONTRACT	STL	STEEL
CG	CORNER GUARD	FRP	FIBER REINFORCED PANEL	NO	NUMBER	STOR	STORAGE
CHAM	CHAMFER	FRT	FIRE RETARDANT TREATED WOOD	NOM	NOMINAL	STRUC	STRUCTURE (AL)
CJ	CONTROL JOINT	FT	FOOT, FEET	NRC	NOISE REDUCTION COEFFICIENT	SUSP	SUSPENDED
CL	CENTER LINE	FTG	FOOTING	NTS	NOT TO SCALE	SYM	SYMMETRY (ICAL)
CLG	CEILING	FV	FIELD VERIFY	OC	ON CENTER	T	THICKNESS
CLR	CLEAR	GA	GAUGE	OD	OUTSIDE DIAMETER	T & B	TOP AND BOTTOM
CM	CONSTRUCTION MANAGER	GALV	GALVANIZED	OFCl	OWNER FURNISHED/ TO BE DETERMINED	T&G	TONGUE AND GROOVE
COL	COLUMN	GB	GRAB BAR	OFD	OVERFLOW DRAIN	TBD	TO BE DETERMINED
COMP	COMPUTER	GC	GENERAL CONTRACTOR	OH	OVERHEAD	TEMP	TEMPORARY
CONC	CONCRETE	OPC	OPENING	OR	ORIENTED STRAND BOARD	THRU	THROUGH
CONT	CONTINUOUS	OPG	OPENING	OSB	ORIENTED STRAND BOARD	T.O.	TOP OF
CMU	CONCRETE MASONRY UNIT	GWB	GYPSSUM WALLBOARD	OZ	OUNCE	TRANS	TRANSFORMER
CSBA	COLOR SELECTED BY ARCHITECT	CERAMIC TILE	CERAMIC TILE	PERI	PERIMETER	TYP	TYPICAL
DB	DECK BEARING	HC	HANDICAP ACCESSIBLE	PERM	PERMANENT	UNF	UNFINISHED
DBL	DOUBLE	HDW	HARDWARE	PL	PLATE	UNO	UNLESS OTHERWISE NOTED
DEPT	DEPARTMENT	HDF	HIGH DENSITY FIBERBOARD	PLAM	PLASTIC LAMINATE	VAR	VARIABLE
DF	DRINKING FOUNTAIN	HM	HOLLOW METAL	PNL	PANEL	VB	VAPOR BARRIER
DIA	DIAMETER	H	HEIGHT	P.O.	POINT OF	VCT	VINYL COMPOSITION TILE
DN	DOWN	HOR	HORIZONTAL	PR	PAIR	VERT	VERTICAL
DRN	DRAIN	ID	INSIDE DIAMETER	PT	POST TENSIONED	VEST	VESTIBULE
DTU DET	DETAIL	ICF	INSULATED CONCRETE FORM	PART	PARTITION	VWC	VINYL WALLCOVERING
DW	DISHWASHER	IN	INCH	PLY	PLYWOOD	W	WEST
DWG	DRAWING	INCL	INCLUDE	QT	QUARRY TILE	W	WIDTH
E	EAST	INT	INTERIOR	R / RAD	RADIUS	W	WITH
(E)	EXISTING	INSUL	INSULATE, (D), (ION)	RCP	REFLECTED CEILING PLAN	WC	WOOD
EA	EACH	INV	INVERT	REC	RECESSED	W/O	WITHOUT
EIFS	EXTERIOR INSULATION SYSTEM	JST	JOIST JOINT	REF	REFERENCE	W/O	WHERE OCCURS
		WT	WATER TREATMENT			WSCOT	WAINSCOT
						WWF	WELDED WIRE FABRIC

DESIGN DATA

PROJECT CONSIST OF 500 SQUARE FOOT REMODEL OF EXISTING AV CLOSET AND CONFERENCE ROOM. REMOVING EXISTING PROJECTION SCREEN AV EQUIPMENT AND ADDING IN NEW AV EQUIPMENT. ADDING IN MILLWORK INTO EXISTING AV EQUIPMENT ROOM.

GOVERNING BUILDING CODES:
 IBC 2015, to include Appendix J, ANSI 117-1 2009, NFPA 101 LIFE SAFETY 2015, IMC 2015, IPC 2015, IECC 2015 for commercial projects, IFGC 2015, NEC 2014

ORIGINAL BUILDING BUILT UNDER:
 IBC 2006, ANSI 117-1 1991, IECC 2006, IMC 2006, IPC2006, NEC 2005

OCCUPANCY TYPE - (CH.3)
 B - BUSINESS

CONSTRUCTION TYPE: PER TABLE 503.1B (Unchanged)

FIRE RESISTANCE RATING REQUIREMENTS FOR BUILDING ELEMENTS (TBL 601)

- STRUCTURAL FRAME (INCLUDES COL, GIRDERS, TRUSSES) - 2 HOUR (Unchanged)
- BEARING WALLS EXTERIOR - 2 HOUR (Unchanged)
- INTERIOR PARTITION - 1 HOUR (Unchanged)
- INTERIOR SUPPORTING ROOF ONLY - 1 HOUR (Unchanged)
- NON-BEARING WALLS AND PARTITION - 0 HOUR (Unchanged)
- FLOOR CONSTRUCTION INCLUDING BEAMS AND JOISTS - 2 HOUR (Unchanged)
- ROOF CONSTRUCTION INCLUDING BEAMS AND JOISTS - 1 HOUR (Unchanged)

UL ASSEMBLIES TO BE AS FOLLOWS FOR RATING LISTED ABOVE:
 METAL STUD WALLS: U419
 TOP OF RATED WALLS: HW-D-0042
 SEE SHEETS G200 FOR FULL ASSEMBLY
 SEE PLANS FOR WALL ASSEMBLY TYPES AND LOCATIONS

AUTOMATIC SPRINKLER SYSTEM:
 PROVIDE SYSTEM PER IBC 903 AND NFPA 13 (Unchanged)

ALLOWABLE HEIGHTS FOR TYPE I-B CONSTRUCTION (TABLE 503)
 160' / 11 STORIES (Unchanged)

ALLOWABLE AREA (FOR TYPE I-B CONSTRUCTION) (TABLE 503)
 UNLIMITED AREA PER FLOOR (Unchanged)

ACTUAL AREA - 500 SF

EGRESS WIDTH FOR OCCUPANCY SERVED PER 1005
 ORIGINAL PROJECT ACCOUNTED FOR EGRESS WIDTHS AT FULL OCCUPANCY. NO CHANGES ARE PROPOSED FOR EGRESS COMPONENTS.

EXIT ACCESS - (CH. 10)

2 EXITS REQUIRED - (CH. 1006.3.1) (Unchanged)
 WHERE THE OCCUPANCY LOAD TOTALS MORE THAN 50
 EXITS PLACED FAR ENOUGH APART - NOT LESS THAN 1/3 MAXIMUM DIAGONAL DIMENSION OF AREA SERVED - MEASURED STRAIGHT LINE BETWEEN EXITS (1015.2.1 EXCEPTION 2)

THROUGH INTERVENING SPACES (1016.2) (Unchanged)
 PERMITTED WHERE ADJOINING ROOMS OR AREAS ACCESSORY TO THE AREAS SERVED, IS NOT HIGH HAZARD OCCUPANCY, AND PROVIDE A DISCREMINABLE PATH OF EGRESS TRAVEL TO AN EXIT.

TRAVEL DISTANCE: (TABLE 1017.2) (Unchanged)
 WITH SPRINKLER SYSTEM - 300' MAXIMUM LENGTH OF EXIT ACCESS TRAVEL (UNCHANGED)

CORRIDOR FIRE RESISTANCE RATING (TABLE 1020.1) (Unchanged)
 WITH SPRINKLER SYSTEM - 0 HOUR FIRE RATED CONSTRUCTION

DEAD ENDS (1020.4) (Unchanged)
 50' IN SPRINKLERED BUILDING (EXCEPTION 2)
 OR THE LENGTH IS 2.5 TIMES THE WIDTH (EXCEPTION 3)

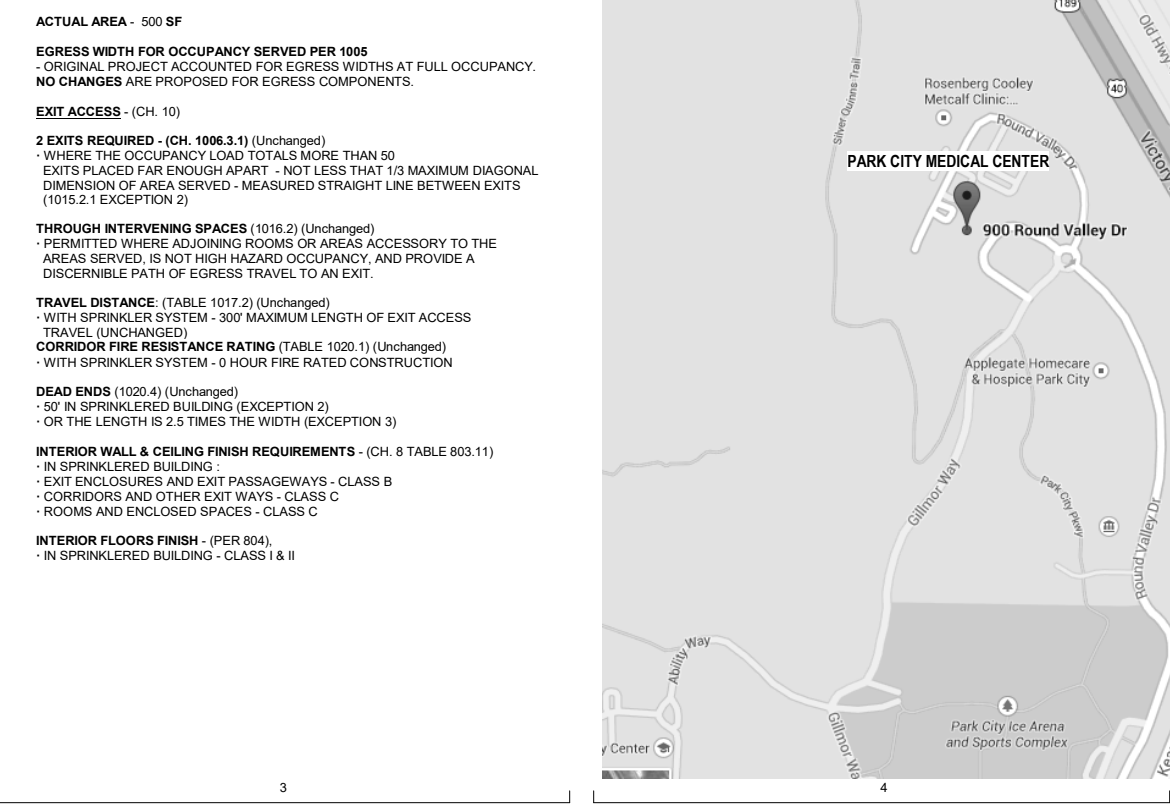
INTERIOR WALL & CEILING FINISH REQUIREMENTS - (CH. 8 TABLE 803.11)
 IN SPRINKLERED BUILDING -
 EXIT ENCLOSURES AND EXIT PASSAGEWAYS - CLASS B
 CORRIDORS AND OTHER EXIT WAYS - CLASS C
 ROOMS AND ENCLOSED SPACES - CLASS C

INTERIOR FLOORS FINISH - (PER 804)
 IN SPRINKLERED BUILDING - CLASS I & II

ABBREVIATIONS

REFG	REFRIGERATOR	REIN	REINFORCE (ED)	REPL	REPLACE	REQD	REQUIRED
REV	REVISION (S)	RM	ROOM	RO	ROUGH OPENING	S	SOUTH
SALV	SALVAGE (ED)	SECT	SECTION	SQ	SQUARE	SS	STAINLESS STEEL
STD	STANDARD	STL	STEEL	STOR	STORAGE	STRUC	STRUCTURE (AL)
SUSP	SUSPENDED	SYM	SYMMETRY (ICAL)	T	THICKNESS	T & B	TOP AND BOTTOM
T & G	TONGUE AND GROOVE	TBD	TO BE DETERMINED	TEMP	TEMPORARY	THRU	THROUGH
T.O.	TOP OF	TRANS	TRANSFORMER	TS	TUBE STEEL	TYP	TYPICAL
UNF	UNFINISHED	UNO	UNLESS OTHERWISE NOTED	VAR	VARIABLE	VB	VAPOR BARRIER
VCT	VINYL COMPOSITION TILE	VERT	VERTICAL	VEST	VESTIBULE	VWC	VINYL WALLCOVERING
W	WEST	W	WIDTH	W	WITH	WC	WOOD
W/O	WITHOUT	W/O	WHERE OCCURS	WSCOT	WAINSCOT	WWF	WELDED WIRE FABRIC

REFERENCE SYMBOL LEGEND



SHEET INDEX

SHEET NUMBER	SHEET NAME
GENERAL	COVER
G001	GENERAL INFORMATION AND SHEET INDEX
ARCHITECTURAL DEMOLITION	
AD111	FIRST FLOOR - AREA 1 - DEMOLITION PLAN
ARCHITECTURAL	
AR10.1	OVERALL PLAN - FIRST FLOOR
A111	FIRST FLOOR BOARD ROOM FLOOR PLAN, RCP, & INTERIOR ELEVATIONS
ELECTRICAL	
EE001	SHEET INDEX, ABBREVIATIONS, AND GENERAL NOTES
EE501	TYPICAL MOUNTING HEIGHTS DETAILS
EE502	ELECTRICAL DETAILS AND SCHEDULES
EP100	OVERALL POWER PLAN
EP101	ELECTRICAL PLANS
Grand total:	10

GENERAL NOTES

- IT IS THE CONTRACTOR'S RESPONSIBILITY TO REVIEW AND COORDINATE THE WORK OF ALL SUB-CONTRACTORS, TRADES AND SUPPLIERS WITH THE REQUIREMENTS OF THE CONTRACT DOCUMENTS BEFORE COMMENCING CONSTRUCTION, AND TO ASSURE THAT ALL PARTIES ARE AWARE OF ALL REQUIREMENTS, REGARDLESS OF WHERE THE REQUIREMENTS OF THE CONTRACT DOCUMENTS, WHICH MIGHT AFFECT THE WORK OF THAT PARTY.
- AS PART OF THE CONTRACTOR'S RESPONSIBILITY TO COORDINATE THE WORK OF ALL SUB-CONTRACTORS, TRADES AND SUPPLIERS, THE CONTRACTOR SHALL ENDEAVOR TO IDENTIFY AND NOTIFY THE ARCHITECT OF ANY CONFLICTS BETWEEN THE WORK OF DIFFERENT PARTIES AT THE EARLIEST POSSIBLE DATE SO AS TO ALLOW REASONABLE AND ADEQUATE TIME FOR THE CONFLICT TO BE RESOLVED WITHOUT DELAYING THE WORK. ALL DEVIATIONS FROM THAT WHICH IS REQUIRED BY THE CONTRACT DOCUMENTS MUST BE APPROVED IN ADVANCE BY THE ARCHITECT.
- THE ARCHITECTURAL DRAWINGS ESTABLISH AND COORDINATE THE FINISHED APPEARANCE AND EXACT LOCATION OF ALL EXPOSED ELEMENTS OF THE WORK OF ALL THE TRADES, INCLUDING THAT WORK WHICH IS ILLUSTRATED PRIMARILY ON DRAWINGS OF OTHER DISCIPLINES. QUANTITIES ARE TO BE PROVIDED AS SHOWN ON DRAWINGS OF OTHER DISCIPLINES BUT LOCATIONS SHOWN ON OTHER DRAWINGS ARE SCHEMATIC, UNLESS OTHERWISE NOTED ON THE ARCHITECTURAL DRAWINGS. THE ARCHITECTURAL DRAWINGS TAKE PRECEDENCE FOR THE FINISHED APPEARANCE AND EXACT LOCATION OF ALL PARTS OF THE WORK.
- EXCEPT WHERE DIRECTED TO PLACE ITEMS OF WORK AT THE APPROXIMATE LOCATION SHOWN, DO NOT SCALE DRAWINGS FOR DIMENSIONAL INFORMATION. ALL ELEMENTS OF THE DRAWINGS MAY NOT BE DRAWN TO EXACT SCALE. ALL DIMENSIONS REQUIRED ARE SHOWN OR MAY BE DERIVED FROM THOSE SHOWN ON THE FLOOR PLANS, DETAIL PLANS, ELEVATIONS, SECTIONS, DETAILS, SCHEDULES AND SPECIFICATIONS. IF DIMENSIONS ARE NOT PRESENT, THE ARCHITECT IS TO BE NOTIFIED SO THAT A CLARIFICATION CAN BE ISSUED.
- CONTRACTOR TO FOLLOW CURRENT ANSI 117-1 STANDARDS AS REPRESENTED ON SHEET G001, GENERAL ACCESSIBILITY GUIDELINES. NOTIFY ARCHITECT IF THE DESIGN DRAWINGS CONFLICT WITH THIS SHEET.

NOTES TO BIDDERS

- THIS SHEET CONTAINS A LIST OF DRAWINGS WHICH COMPRISE A FULL SET OF DRAWINGS FOR THIS PROJECT. ANY CONTRACTOR, SUBCONTRACTOR, VENDOR OR ANY OTHER PERSON PARTICIPATING IN OR BIDDING ON THIS PROJECT SHALL BE RESPONSIBLE FOR THE INFORMATION CONTAINED IN ANY AND ALL SHEETS OF DRAWINGS AND SPECIFICATIONS. IF ANY PERSON, PARTY OR ENTITY ELECTS TO SUBMIT BIDS FOR ANY PORTION, OR ALL OF THIS PROJECT, THAT PERSON, PARTY OR ENTITY SHALL BE RESPONSIBLE FOR ANY AND ALL INFORMATION CONTAINED IN THESE DRAWINGS AND SPECIFICATIONS, INCLUDING, BUT NOT LIMITED TO, ANY SUBSEQUENT ADDENDUMS OR CLARIFICATIONS THAT MAY BE ISSUED.
- THESE DOCUMENTS SHOW THE DESIGN INTENT. IT IS THE CONTRACTOR'S RESPONSIBILITY TO PROVIDE EVERYTHING SHOWN ON THE DRAWINGS OR SPECIFIED REGARDLESS OF WHERE IT IS SHOWN ON THE DRAWINGS OR IN THE SPECIFICATIONS. FOR EXAMPLE, SOME MILLWORK DETAILS HAVE STEEL FRAMES WHICH MAY BE PROVIDED BY DIVISION 05 OR WITH THE MILLWORK AT THE CONTRACTOR'S DISCRETION, BUT IT SHALL BE PROVIDED AS PART OF THE CONTRACT.
- EVERYTHING CALLED FOR IN THESE DOCUMENTS SHALL BE "NEW" AND PROVIDED BY THE CONTRACTOR, SUBCONTRACTOR, VENDOR OR ANY OTHER PERSON PARTICIPATING IN OR BIDDING ON THIS PROJECT UNLESS NOTED OTHERWISE AS EXISTING (EXIST), NOT IN CONTRACT (NIC) OR FOR REFERENCE ONLY. FURNISHINGS SHOWN DASHED SHALL BE FOR REFERENCE ONLY.

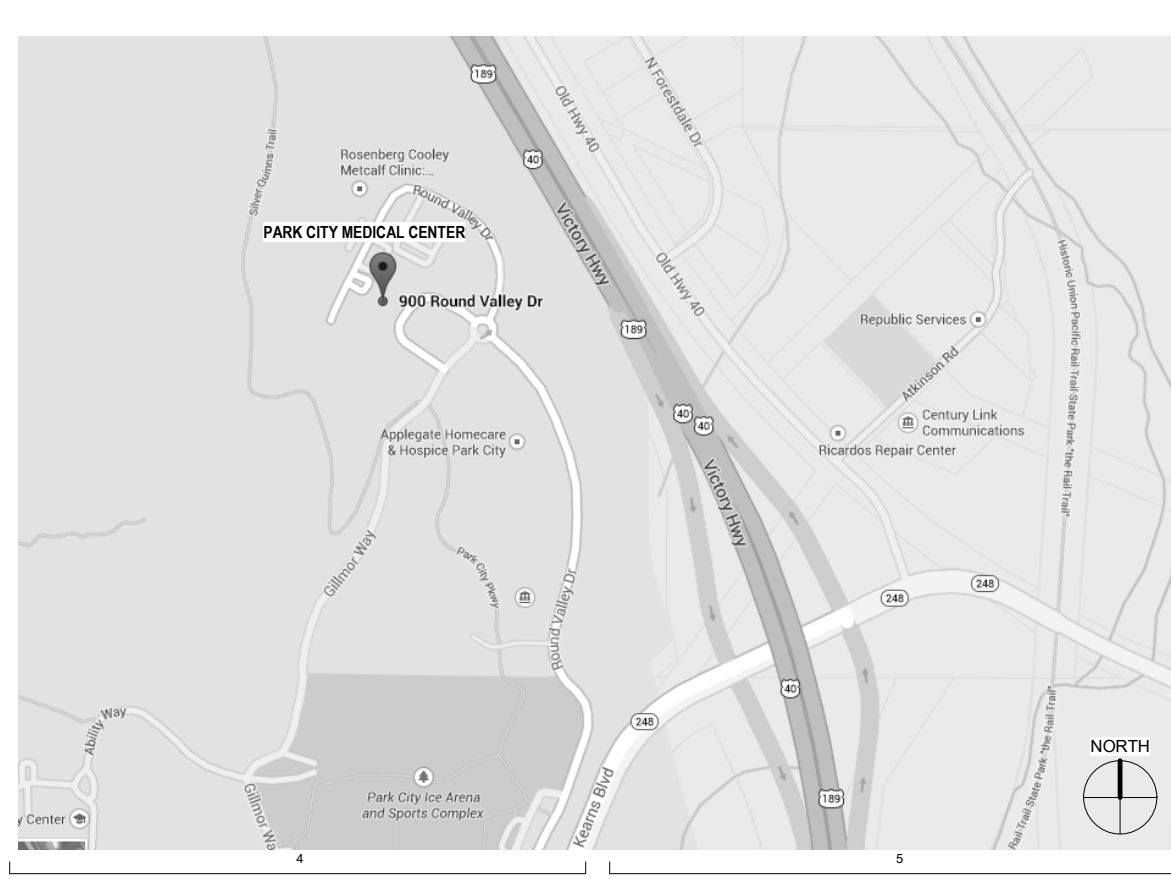
PROJECT TEAM

OWNER Intermountain Healthcare 4566 South Holladay BLVD. Holladay, Utah 84117	FACILITY Park City Hospital Intermountain Healthcare Si Hult, Hospital Administrator 900 Round Valley Drive Park City, Utah 84060 si.hult@gmail.com
ARCHITECTS VCBO Architecture Jeff Pinegar, AIA, Principal in Charge 524 S. State Street, Suite 400 Salt Lake City, UT 84102 Phone: 801.575.8800 Email: jpinegar@vcbo.com	ELECTRICAL ENGINEER Spectrum Engineers Peter Johansen, P.E., LEED AP 524 S. State Street, Suite 400 Salt Lake City, UT 84111 801.401.8422 pej@spectrum-engineers.com

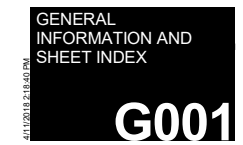
UTILITY CONTACTS

POWER Rocky Mountain Power 201 S. Main Street, Suite #2300 Salt Lake City, UT 84111 888.221.7070	WATER / SEWER Snyderville Basin Water Reclamation District 2800 Homestead Road Park City, Utah 84098 phone: 435.649.7993 fax: 435.649.8040
NATURAL GAS Dominion Energy Park City, UT 84060 435.649.0670	TELEPHONE Centurylink 4160 Atkinson Drive Park City, UT 84098 phone: 435.649.6186

VICINITY MAP





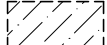

INTERMOUNTAIN PARK CITY HOSPITAL
BOARD ROOM REMODEL
 INTERMOUNTAIN HEALTHCARE
 900 ROUND VALLEY DR, PARK CITY, UT 84060
 CONSTRUCTION DOCUMENTS
G001



KEYED NOTES

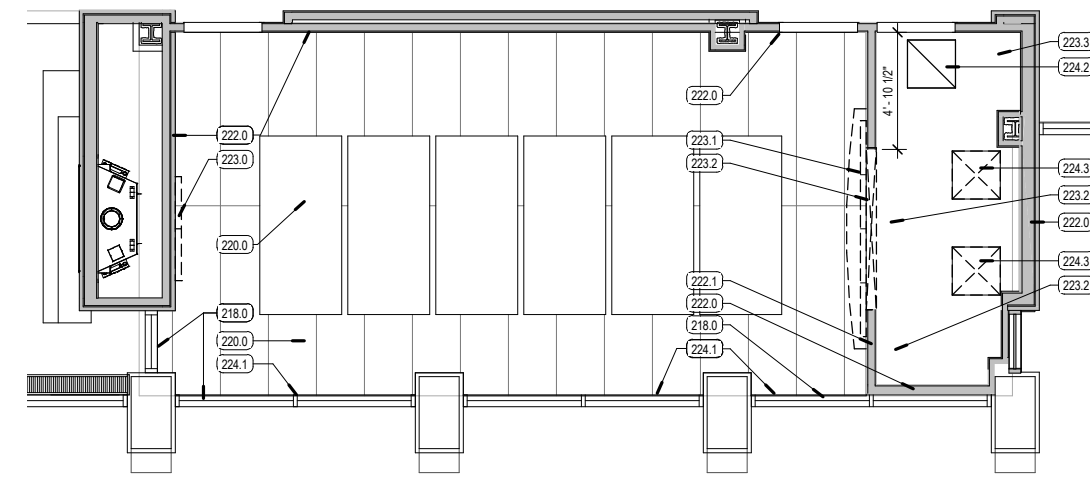
- 218.0 EXISTING DOOR/WINDOW, PROTECT AS NECESSARY, REPAIR AS REQUIRED
- 220.0 EXISTING SOFFIT/CEILING, PROTECT AS NECESSARY, REPAIR AS REQUIRED
- 222.0 EXISTING WALL, PROTECT AS NECESSARY, REPAIR AS REQUIRED
- 222.1 REMOVE & DISPOSE PORTION OF EXISTING WALL FOR NEW OPENING
- 223.0 REMOVE & SALVAGE MARKER BOARD CABINET, RELOCATE AS PER OWNER DIRECTION
- 223.1 REMOVE & DISPOSE EXISTING MILLWORK
- 223.2 REMOVE & SALVAGE PROJECTION SCREEN AND EQUIPMENT
- 223.3 EXISTING AV EQUIPMENT CABINET, PROTECT IN PLACE, REPAIR AS REQUIRED
- 224.1 EXISTING WINDOW SHADES, PROTECT IN PLACE, REPAIR AS REQUIRED
- 224.2 EXISTING MECHANICAL RETURN DIFFUSER, PROTECT IN PLACE, REPAIR AS REQUIRED
- 224.3 EXISTING MECHANICAL SUPPLY DIFFUSER, RELOCATE INTO NEW CEILING, BALANCE SYSTEM

DEMOLITION LEGEND

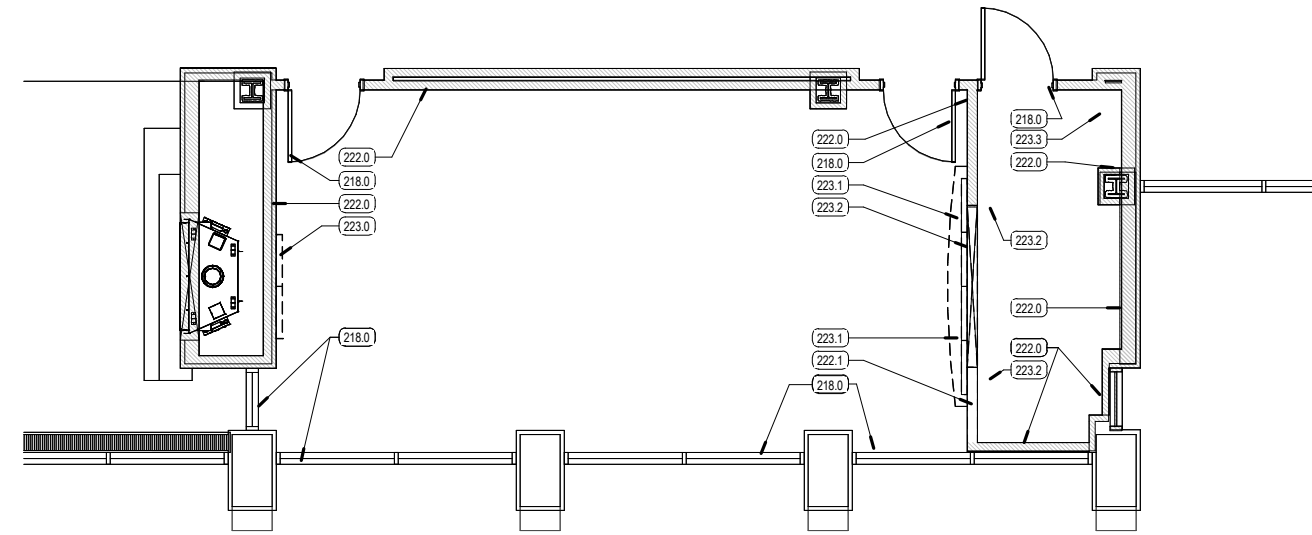
-  REMOVE & DISPOSE ELEMENT
-  REMOVE & DISPOSE FLOORING AND CEILING IN THIS AREA (SEE DEMO PLANS)
-  REMOVE & DISPOSE FLOORING (ONLY) IN THIS AREA (SEE DEMO PLANS)
-  SAW CUT EXISTING SLAB AS NEEDED FOR FUTURE PLUMBING IN THIS AREA (SEE DEMO PLANS)

GENERAL DEMOLITION NOTES

1. FIELD VERIFY CONDITIONS PRIOR TO BIDDING. BRING DIFFERING DIMENSIONS AND CONDITIONS TO ARCHITECT'S ATTENTION PRIOR TO BIDDING.
2. A HAZARDOUS MATERIAL SURVEY IS AVAILABLE FROM THE OWNER. ABATEMENT MUST BE COMPLETED PRIOR TO DEMOLITION OF BUILDINGS OR BUILDING ELEMENTS.
3. COORDINATION WITH OWNER'S INFECTION CONTROL SPECIALIST AND AN APPROVED ICRA MANAGEMENT PLAN IS REQUIRED PRIOR TO START OF ANY DEMOLITION WORK.
4. PROVIDE DUSTPROOF ENCLOSURES AT PERIMETER OF CONSTRUCTION & DEMOLITION FOR PROTECTION OF ADJACENT SPACES AS PER ICRA PLAN.
5. COORDINATE MAINTENANCE OF FIRE EGRESS FOR OCCUPANTS IN EXISTING BUILDING WITH THE OWNER AND FIRE MARSHAL. PROVIDE NECESSARY TEMPORARY WALLS OR ENCLOSURES, EMERGENCY LIGHTS, ETC., FOR THE DURATION OF CONSTRUCTION.
6. BRING TO ARCHITECT'S ATTENTION EXISTING CONDITIONS THAT PRESENT ANY CODE VIOLATIONS, INCORRECT CONSTRUCTION OR SAFETY PROBLEMS.
7. MAINTAIN EXISTING FIRE RATINGS, ABOVE CEILING MARKING REQUIREMENTS AND ASSOCIATED FIRE PROTECTION SYSTEMS (I.E. FIRE SPRINKLERS AND FIRE ALARM SYSTEMS) THROUGHOUT CONSTRUCTION. COORDINATE ANY INTERRUPTION TO THESE SYSTEMS WITH THE OWNER AND FIRE MARSHAL. PROVIDE FIRE WATCH REQUIREMENTS ASSOCIATED WITH INTERRUPTIONS TO THESE SYSTEMS.
8. DO NOT DISTURB EXISTING FIRE RATED ELEMENTS INCLUDING FIREPROOFING ON BUILDING STRUCTURE. PATCH/REPAIR DAMAGED OR DISTURBED ITEMS.
9. PROTECT EXISTING STRUCTURE, FINISHES, AND SITE ELEMENTS NOT SCHEDULED FOR DEMOLITION. RESTORE DAMAGED ITEMS TO THEIR ORIGINAL CONDITION OR REPLACE AT CONTRACTOR'S EXPENSE.
10. REMOVE AND DISPOSE SELECTIVE DEMOLITION MATERIAL PER LOCAL REQUIREMENTS.
11. SALVAGE MATERIAL WHERE INDICATED. REMOVE ITEMS FROM CURRENT LOCATIONS & PREPARE FOR STORAGE BY THE OWNER.
12. REFER TO ELECTRICAL AND MECHANICAL PLANS FOR REQUIRED ADDITIONAL DEMOLITION.
13. AFTER DEMOLITION, PRIOR TO FINISH, PATCH AND REPAIR EXISTING WALLS TO PROVIDE SURFACE SUITABLE FOR PAINTING OR WALL COVERING.
14. PATCH & LEVEL EXISTING CONCRETE SLABS FOR NEW FINISHES WITH FLOOR LEVELING COMPOUND.
15. FIELD VERIFY AND COORDINATE SAW CUTTING OF THE CONCRETE FLOOR SLAB WITH PLUMBING AND ELECTRICAL.
16. REPLACE SLAB AND TRENCH BY COMPACTING CLEAN GRAVEL IN 8 INCH LIFTS. DRILL #4 EPOXY-COATED REBAR INTO EXISTING SLAB @ 12 INCHES OC. POUR SLAB TO PROVIDE A SMOOTH EVEN FLOOR.
17. WHERE ELECTRICAL CIRCUIT CONTINUITY IS INTERRUPTED, BUT MUST BE MAINTAINED, MAKE NECESSARY MODIFICATIONS TO MAINTAIN CIRCUIT INTEGRITY.
18. REMOVE ELECTRICAL BOXES BEHIND RELOCATED MILLWORK AND CAP AS REQUIRED.
19. CAP EXISTING DUCT WORK FOR DUST CONTROL.
20. CONTRACTOR IS TO COORDINATE ALL DEMOLITION AND CONSTRUCTION ACTIVITIES WITH THE ONGOING OPERATIONS OF AN ACTIVE AND ONGOING CLINIC. AFTER HOURS OR WEEKEND WORK SHALL BE EMPLOYED TO AVOID ADVERSE IMPACTS TO TENANT EMPLOYEES. CONTRACTOR TO SCHEDULE WORK AND COORDINATE ANY UTILITY SHUT OFFS OR INTERRUPTIONS WITH BUILDING OWNER 2 WEEKS PRIOR TO OCCURRENCE.
21. SAWCUT EXISTING SLAB AS REQUIRED FOR NEW PLUMBING AND ELECTRICAL. COORDINATE WITH PLUMBING AND ELECTRICAL DRAWINGS FOR EXACT LOCATION.



B4 FIRST FLOOR, BOARD ROOM RCP
DEMOLITION
SCALE: 1/4" = 1'-0"



A4 FIRST FLOOR, AREA 1 - DEMOLITION PLAN
SCALE: 1/4" = 1'-0"

REV	DATE	DESCRIPTION

VCBO NUMBER: 17950
DATE: 04-11-2018

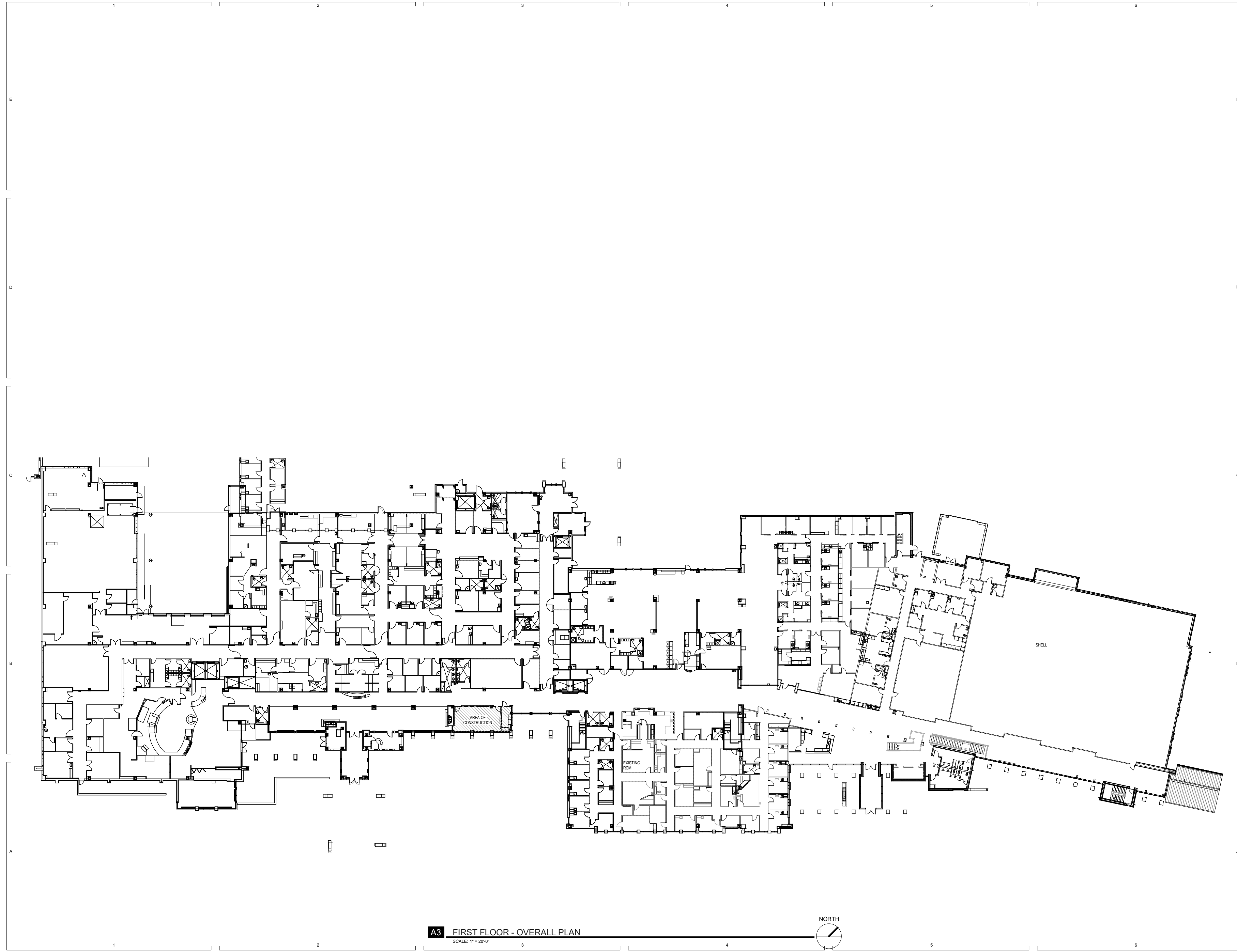
REV	DATE	DESCRIPTION

VCBO NUMBER: 17950
 DATE: 04-11-2018

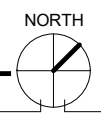
**INTERMOUNTAIN PARK CITY HOSPITAL
 BOARD ROOM REMODEL**
 INTERMOUNTAIN HEALTHCARE
 900 ROUND VALLEY DR, PARK CITY, UT 84060
 CONSTRUCTION DOCUMENTS

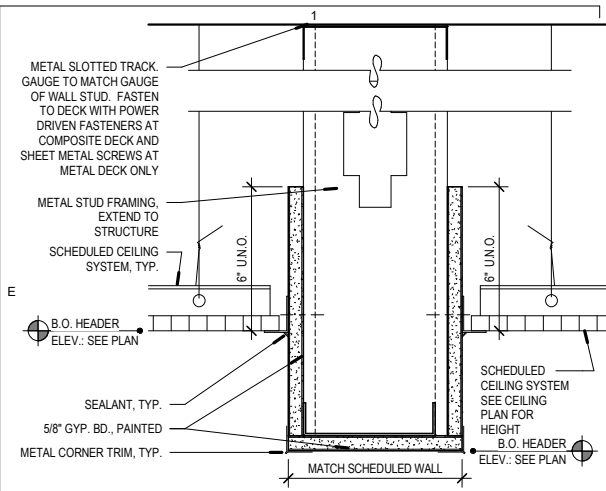
OVERALL PLAN - FIRST FLOOR

A010.1

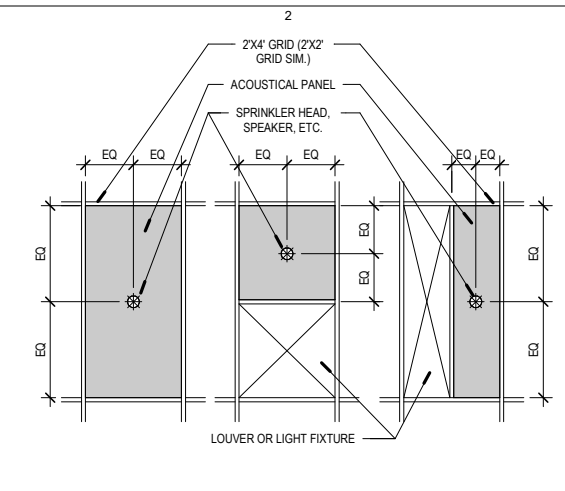


A3 FIRST FLOOR - OVERALL PLAN
 SCALE: 1" = 20'-0"

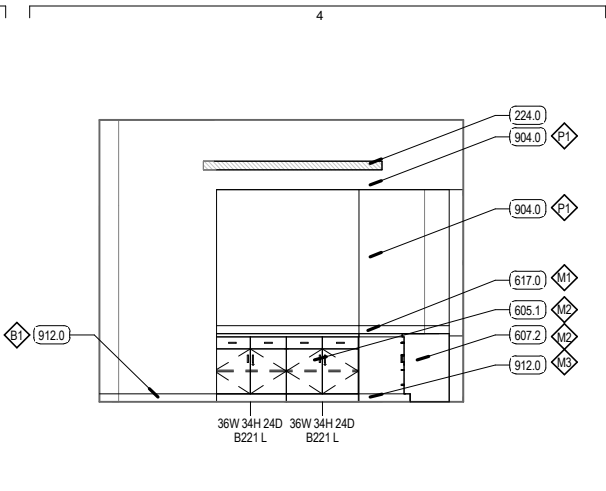




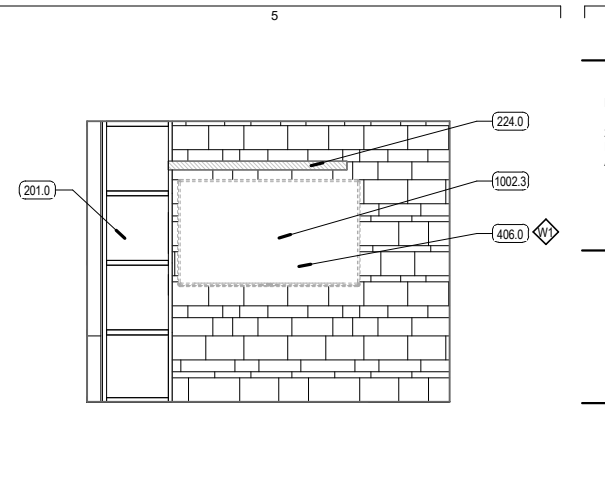
E1 TYP. METAL STUD HEADER
SCALE: 3" = 1'-0"



E2 TYP. CEILING TILE PENETRATION
SCALE: 1/2" = 1'-0"



E4 INTERIOR ELEVATION - BOARD ROOM 2618 NORTH
SCALE: 1/4" = 1'-0"



E5 INTERIOR ELEVATION - BOARD ROOM 2618 SOUTH
SCALE: 1/4" = 1'-0"

EQUIPMENT & ACCESSORIES NOTES

- 1) CONTRACTOR TO PROVIDE REQUIRED WALL BACKING FOR WALL MOUNTED EQUIPMENT AND/OR ACCESSORIES.
- 2) CONTRACTOR TO VERIFY MANUFACTURER'S REQUIREMENTS FOR FLOOR / WALL / CEILING MOUNTED EQUIPMENT AND/OR ACCESSORIES. NOTIFY ARCHITECT WITH ANY DISCREPANCIES.

CEILING LEGEND

- A- SUSPENDED 2' X 2' ACOUSTICAL LAY-IN TILE CEILING
- B- GYPSUM BOARD HEADER

CEILING SYMBOLS

- ELECTRICAL**
- 1'X4' LED FIXTURE
 - RECESSED LED DOWN LIGHT
 - WALL WASH
 - EXIT SIGN, SINGLE-SIDED
 - EXIT SIGN, DOUBLE-SIDED
 - FIRE ALARM
 - SPEAKER
 - SMOKE DETECTOR
- MECHANICAL**
- SUPPLY GRILLE
 - RETURN GRILLE
 - EXHAUST GRILLE
 - LINEAR DIFFUSER
 - SPRINKLER HEAD - CEILING MOUNT
 - SPRINKLER HEAD - WALL MOUNT
 - ACCESS PANEL

GENERAL CEILING NOTES

1. GRID SUSPENSION SYSTEMS SHALL BE CENTERED WITHIN AREAS INDICATED, UNLESS NOTED OTHERWISE
2. PAINT ALL EXPOSED STRUCTURE, MECHANICAL, DUCTS, ELECTRICAL WORK, PIPING, ETC.
3. REFER TO ARCHITECTURAL DRAWINGS FOR LOCATION OF MECHANICAL GRILLES, AND TO MECHANICAL DRAWINGS FOR QUANTITIES AND TYPES
4. REFER TO ARCHITECTURAL DRAWINGS FOR LOCATIONS OF LIGHT FIXTURES AND TO ELECTRICAL DRAWINGS FOR QUANTITY AND TYPES
5. MECHANICAL AND ELECTRICAL CONTRACTORS TO COORDINATE WORK WITH SPRINKLER CONTRACTOR TO AVOID CONFLICTS IN FIELD
6. ALL CEILING HEIGHTS ARE ELEVATION ABOVE TOP OF CONCRETE FLOOR SLAB

FINISH LEGEND

- FLOORING
- FE - EXISTING TILES
 - F1 - MANNINGTON PARADIGM COLLECTION, INTERSECT, EXEMPLAR PAR102
- BASE
- BE - EXISTING BASE - MATCH DALTI S369COT COVE BASE BRUN 6'X12"
 - B1 - ROPPE STRAIGHT RUBBER BASE, LUNAR DUST P114, 4" HIGH
- PAINT
- P1 - LATEX PAINT, MATCH DUNN EDWARDS, DE6192, NOMADIC TAUPE.
 - P2 - LATEX PAINT, MATCH BENJAMIN MOORE 2132-10 BLACK, FLAT FINISH.
 - P3 - LATEX PAINT, MATCH DUNN EDWARDS, DE6190 BALL OF STRING
- WALL SURFACE
- W1 - NATURAL STONE, MATCH EXISTING, BROWNS CANYON NATURAL STONE
- MILLWORK
- M1 - MATCH QUALITY STONE, COLOR: SAFIRMA BROWN
 - M2 - CHERRY STAIN, MATCH WILSONART SAVOY CHERRY
 - M3 - CHERRY STAIN, MATCH EBONY BLACK

GENERAL FINISH NOTES

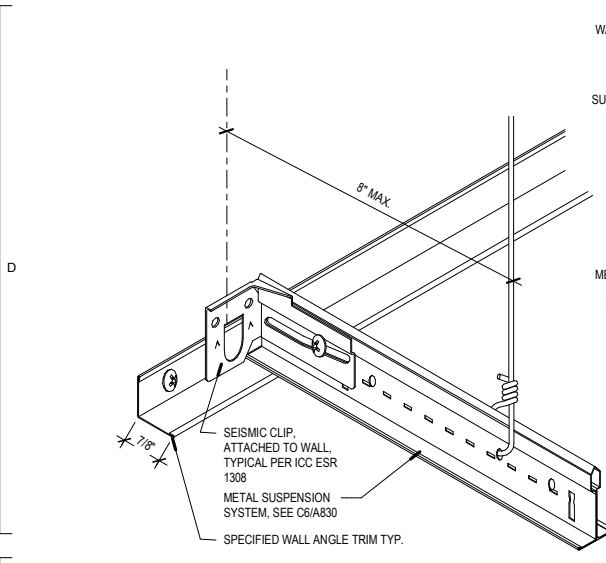
1. PROVIDE A SMOOTH TRANSITION AT ALL FLOOR MATERIALS - CONTRACTOR TO INSTALL ALL FLOOR FINISHES AT SAME LEVEL, DESPITE DIFFERENT THICKNESS. PROVIDE FLOOR TRANSITION BETWEEN DISSIMILAR FLOOR MATERIALS.
2. ALL FLOOR TRANSITIONS TO BE LOCATED AT CENTER OF DOOR, U.N.O.
3. ALL FLOOR TRANSITIONS AT FLOOR TILE LOCATIONS TO BE LOCATED AT INSIDE CORNER OF DOOR.
3. FIELD VERIFY ALL DIMENSIONS BEFORE FABRICATION OF MILLWORK.
4. COORDINATE ALL MILLWORK WITH APPLIANCES BEFORE FABRICATION.
5. ALL COUNTERTOP, BACKSPASHES, AND EDGE BANDING TO HAVE COORDINATING FINISHES.
6. PROVIDE 'CG1' CORNER GUARDS AT ALL CORNERS

FINISH PLAN SYMBOLS

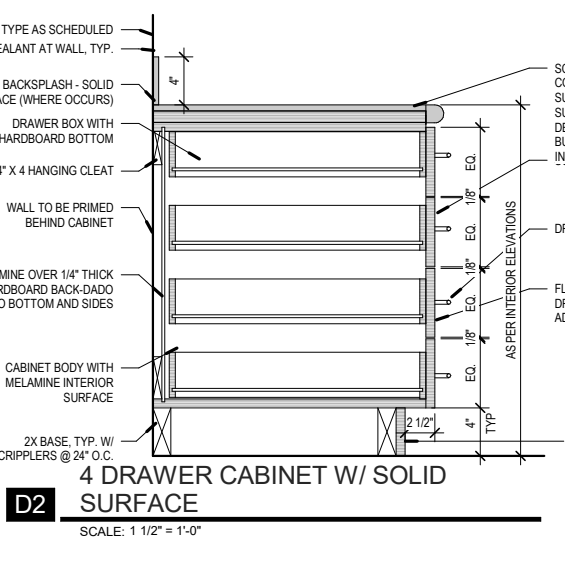
- CG1 HARDWOOD, TO MATCH EXISTING
- SINGLE FINISH SYMBOLS INDICATE WHERE FINISHES ARE DIFFERENT FROM GENERAL ROOM FINISHES, OR PROVIDE ADDITIONAL FINISH INFORMATION
- CHANGE AT FLOOR MATERIAL. PROVIDE FLOOR TRANSITION STRIP
- INDICATES LOCATION OF ACCENT PAINT
- INDICATES DIRECTION OF FLOORING PATTERN TO BE INSTALLED

KEYED NOTES

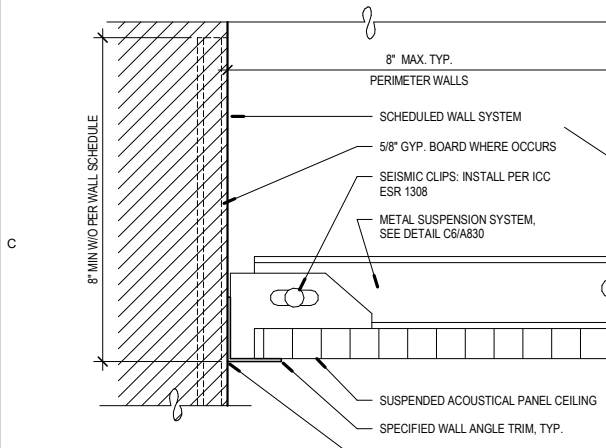
- 201.0 EXISTING BUILDING, PROTECT AS NECESSARY, REPAIR AS REQUIRED
- 224.0 EXISTING CURTAIN WALL SYSTEM, PROTECT IN PLACE, REPAIR AS REQUIRED
- 406.0 VENER ASSEMBLY INFILL, STONE TO MATCH EXISTING STONE
- 605.1 MILLWORK, WALL MOUNTED BASE CABINET WITH BLOCKING
- 607.0 MILLWORK, FILLER PANEL
- 607.2 PANEL, FINISHED END/SIDE/BACK
- 617.0
- 617.2
- 904.0 GYPSUM BOARD PAINTED WHERE EXPOSED
- 912.0 SCHEDULED BASE
- 912.1
- 1002.3 WALL MOUNTED BABY-CHANGING STATION



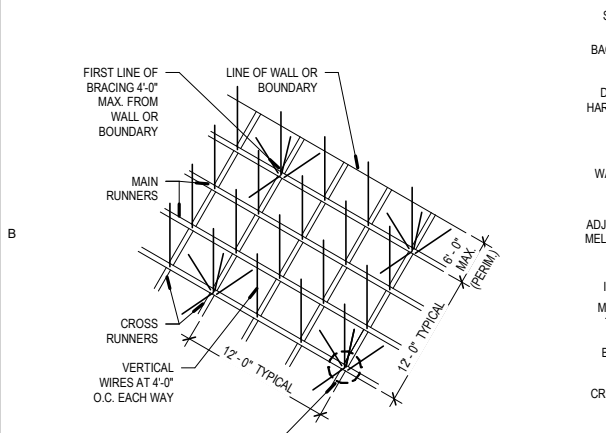
C1 TYP. SUSPENDED CEILING DETAIL
SCALE: 6" = 1'-0"



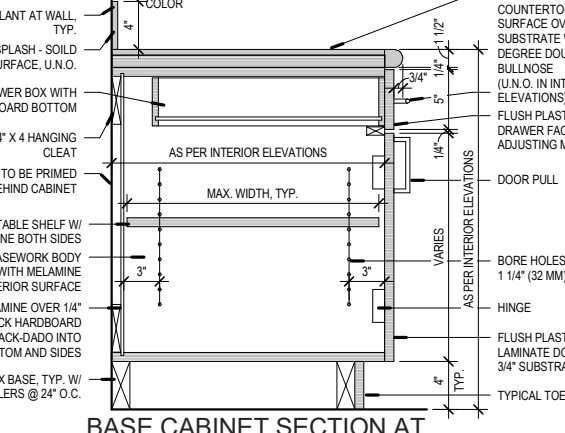
D2 4 DRAWER CABINET W/ SOLID SURFACE
SCALE: 1 1/2" = 1'-0"



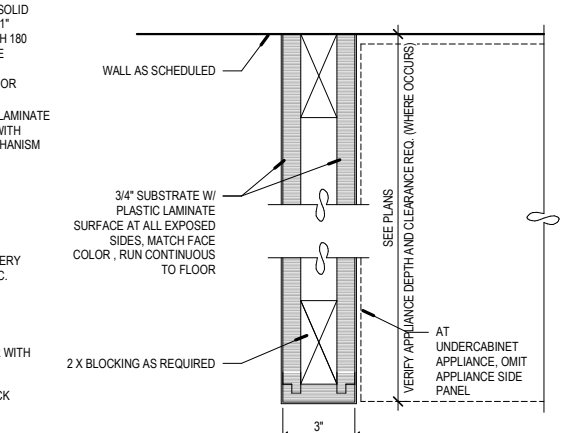
C2 TYPICAL TOE KICK DETAIL
SCALE: 6" = 1'-0"



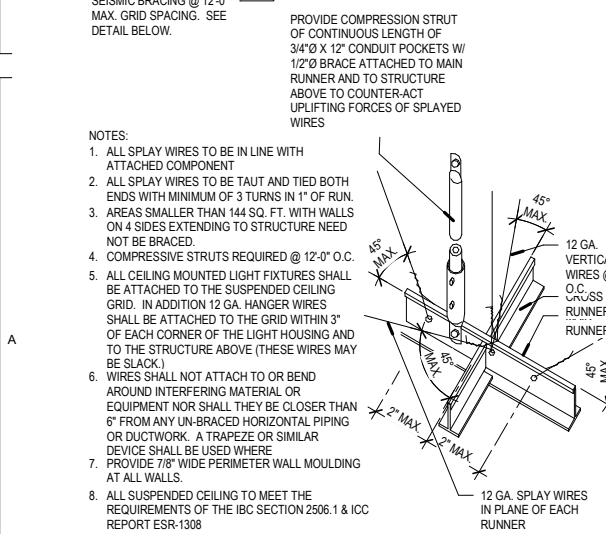
A1 CLG. SUSPENSION & SEISMIC BRACING
SCALE: NOT TO SCALE



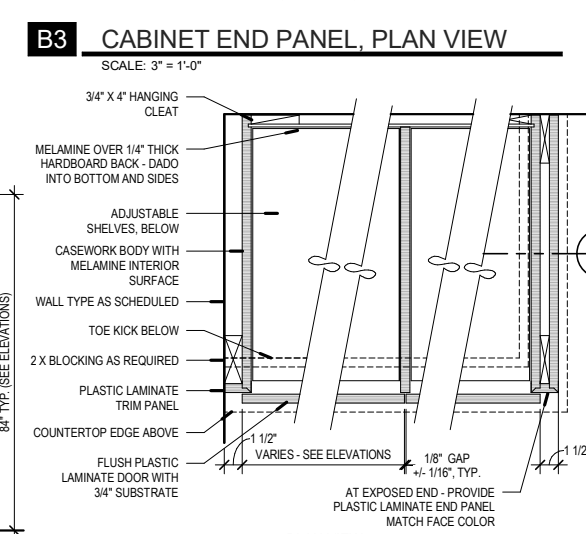
B2 BASE CABINET SECTION AT DRAWER / DOOR W/ SOLID SURFACE
SCALE: 1 1/2" = 1'-0"



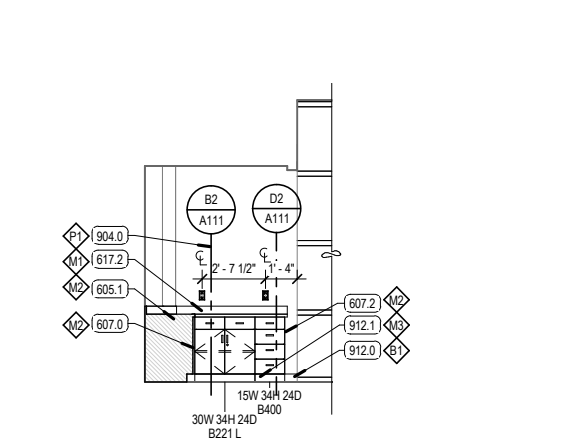
B3 CABINET END PANEL, PLAN VIEW
SCALE: 3" = 1'-0"



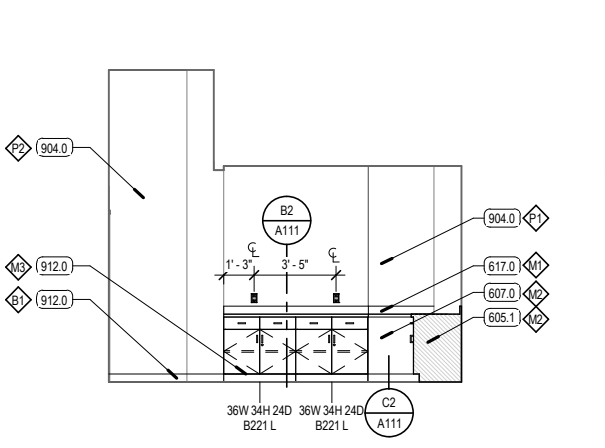
A2 TYPICAL MILLWORK ANCHOR DETAILS
SCALE: 1/2" = 1'-0"



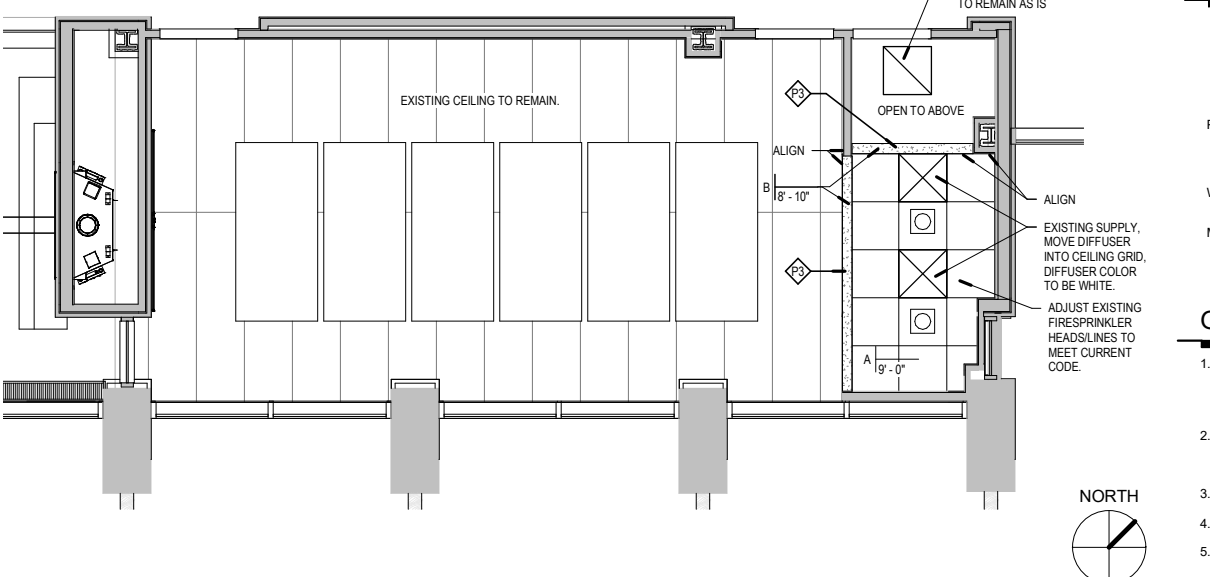
A3 BASE CABINET PLAN VIEW
SCALE: 1 1/2" = 1'-0"



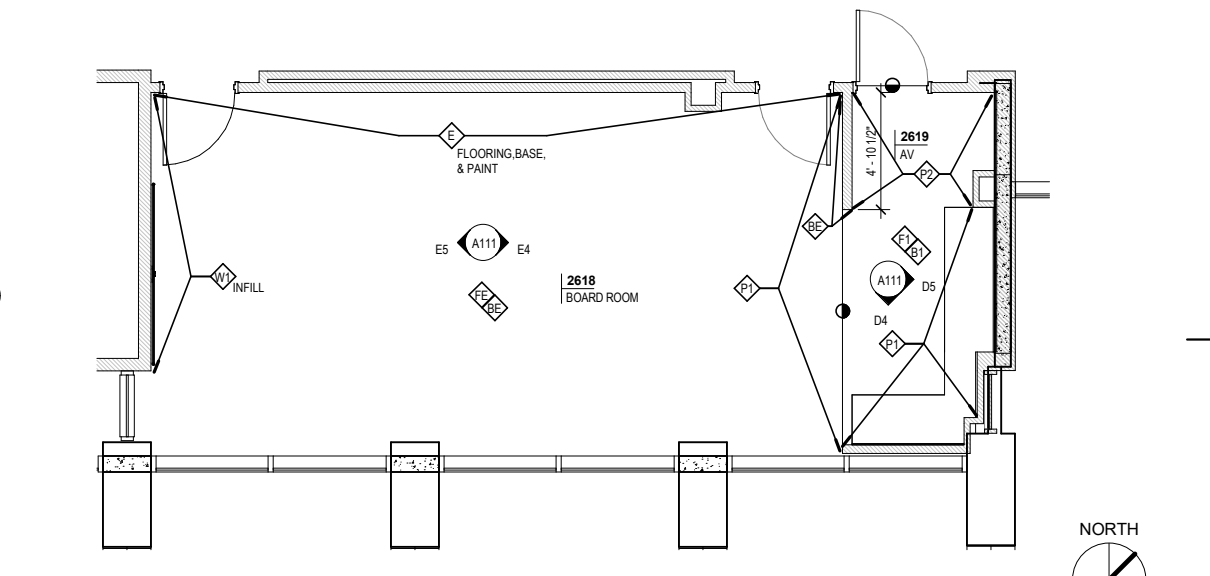
D4 INTERIOR ELEVATION - AV 2619 EAST
SCALE: 1/4" = 1'-0"



D5 INTERIOR ELEVATION - AV 2619 NORTH
SCALE: 1/4" = 1'-0"



B4 FIRST FLOOR, BOARD ROOM RCP
SCALE: 1/4" = 1'-0"



A4 FIRST FLOOR, BOARD ROOM FLOOR PLAN
SCALE: 1/4" = 1'-0"

REV	DATE	DESCRIPTION

VCBO NUMBER: 17950
DATE: 04-11-2018

SYMBOLS LEGEND	
SYMBOL	DESCRIPTION
REFERENCE AND LINE SYMBOLS	
01	DETAIL INDICATOR: A5 INDICATES DETAIL NUMBER. E-501 INDICATES DRAWING SHEET WHERE DETAIL IS SHOWN.
02	ELEVATION OR SECTION INDICATOR, EXTERIOR: A5 INDICATES ELEVATION OR SECTION NUMBER. E-201 INDICATES DRAWING SHEET WHERE ELEVATION OR SECTION IS SHOWN.
03	ELEVATION OR SECTION INDICATOR, INTERIOR: A5 INDICATES ELEVATION OR SECTION NUMBER. E-201 INDICATES DRAWING SHEET WHERE ELEVATION OR SECTION IS SHOWN.
04	ROOM IDENTIFIER WITH ROOM NAME AND NUMBER.
05	KEYNOTE INDICATOR.
06	REVISION INDICATOR.
07	EQUIPMENT INDICATOR.
08	MECHANICAL EQUIPMENT INDICATOR. "X-X" INDICATES EQUIPMENT MARK SHOWN ON EQUIPMENT SCHEDULE. "X-MDP" IDENTIFIES PANEL EQUIPMENT IS CIRCUITED TO. REFER TO EQUIPMENT SCHEDULE FOR ADDITIONAL INFORMATION.
09	BREAK, STRAIGHT: TO BREAK PARTS OF DRAWING
10	BREAK, ROUND
11	MATCH LINE INDICATOR: CENTER, EXTRA WIDE LINE.
12	NEW LINE: MEDIUM LINE.
13	HIDDEN FEATURES LINE: HIDDEN, THIN LINE.
14	EXISTING TO REMAIN LINE: THIN LINE.
15	DEMOLITION LINE: DASHED, MEDIUM LINE.
16	PROPERTY LINE: DASHED, WIDE LINE.
17	CONTRACT LIMIT LINE: DASHDOT, WIDE LINE.
18	ELECTRICAL EQUIPMENT INDICATOR. "XXX" INDICATES TYPE OF EQUIPMENT OR EQUIPMENT ID. "EF-X" IDENTIFIES MECHANICAL EQUIPMENT BEING SERVED. REFER TO EQUIPMENT SCHEDULE FOR ADDITIONAL INFORMATION.
19	KITCHEN EQUIPMENT INDICATOR. "X-X" INDICATES EQUIPMENT MARK SHOWN ON EQUIPMENT SCHEDULE. "X-KP" IDENTIFIES PANEL EQUIPMENT IS CIRCUITED TO. REFER TO EQUIPMENT SCHEDULE FOR ADDITIONAL INFORMATION.
WIRING METHODS	
01	WIRING
04	BRANCH CIRCUIT HOME RUN TO PANELBOARD: NUMBER OF ARROWS INDICATES NUMBER OF CIRCUITS. LETTER AND NUMBER NOTATIONS IDENTIFY PANEL AND CIRCUIT NUMBERS. USE #12 CONDUCTORS, EXCEPT #10 CONDUCTORS SHALL BE INSTALLED IF DISTANCES EXCEED THOSE SPECIFIED IN THE ELECTRICAL SPECIFICATIONS.
05	BRANCH CIRCUIT HOME RUN TO PANELBOARD: NUMBER OF ARROWS INDICATES NUMBER OF CIRCUITS. LETTER AND NUMBER NOTATIONS IDENTIFY PANEL AND CIRCUIT NUMBERS. NUMBER IN BOX REFERS TO THE CONDUCTOR AND CONDUIT SCHEDULE. FOR BRANCH WIRING USE #12 CONDUCTORS, EXCEPT #10 CONDUCTORS SHALL BE INSTALLED IF DISTANCES EXCEED THOSE SPECIFIED IN THE ELECTRICAL SPECIFICATIONS.
07	FLEXIBLE WIRING.
08	WIRING AND/OR RACEWAY: THIN LINE, WHERE "X" =: CATV = CABLE TELEVISION NC = NURSE CALL CCTV = CLOSED CIRCUIT PC = POWER FA = FIRE ALARM S = SOUND F = FIBER OPTICS T = TELEPHONE I = INTERCOM TV = TELEVISION OTHERS AS NOTED IN OTHER SCHEDULES. RACEWAYS AND WIRING SHALL BE SIZED AS SHOWN AND/OR SPECIFIED.
09	LOW VOLTAGE WIRING: DIVIDE, MEDIUM LINE.
10	CONDUIT STUB. DIMENSION RECORD DRAWINGS AND MARK.
11	CONDUCTOR & CONDUIT ("CC") SCHEDULE INDICATOR. REFER TO ONE-LINE DIAGRAM.
12	ADA ACCESS PUSH PLATE
13	JUNCTION BOX.
14	JUNCTION BOX, SYSTEMS FURNITURE COMMUNICATION CONNECTION.
15	CABLE TRAY ABOVE ACCESSIBLE CEILING.
16	WIREWAY.
17	EARTH GROUND (ONE-LINE DIAGRAM).
18	JUNCTION BOX, CEILING.
19	LADDER RACK.
20	MECHANICAL EQUIPMENT CONNECTION. REFER TO EQUIPMENT SCHEDULE FOR REQUIREMENTS.
TV DISTRIBUTION	
01	TV DISTRIBUTION CABLE, INDIVIDUAL DROPS.
02	TV DISTRIBUTION CABLE, TRUNK.
03	COMBINER.
04	DIRECTIONAL COUPLER.
05	DISTRIBUTION AMPLIFIER (ONE-LINE DIAGRAM).
06	SPLITTER (ONE-LINE DIAGRAM).
07	TV OUTLET.
08	SATELLITE ANTENNA.
09	TV ANTENNA (ONE-LINE DIAGRAM).
10	TERMINATOR, 75 OHM (TV DISTRIBUTION).
CLOCK	
01	CLOCK.
02	CLOCK, SURFACE WITH WIRE GUARD.

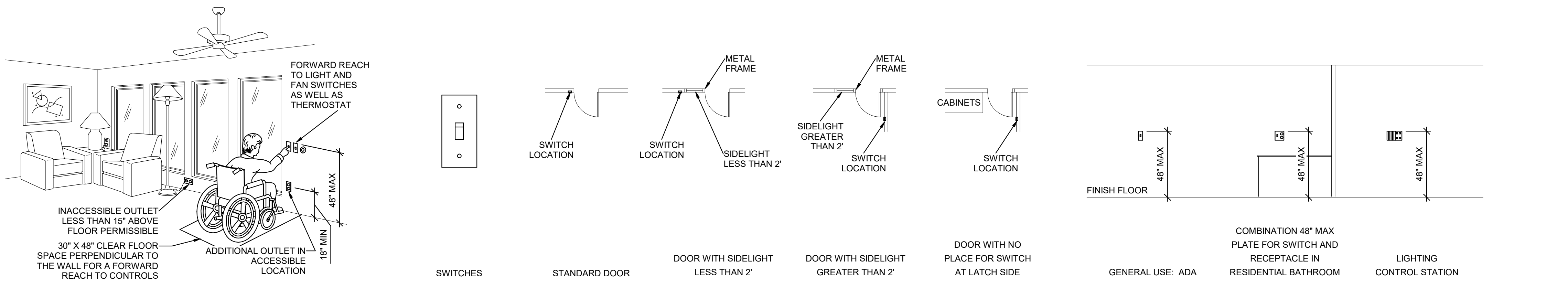
SYMBOLS LEGEND	
SYMBOL	DESCRIPTION
WIRING DEVICES	
02	RECEPTACLE, DUPLEX: NEMA 5-20R.
03	RECEPTACLE, DUPLEX, ABOVE COUNTER: NEMA 5-20R.
04	RECEPTACLE, DUPLEX, CEILING: NEMA 5-20R.
06	RECEPTACLE, DUPLEX WITH GROUND FAULT CIRCUIT INTERRUPTER, DRINKING FOUNTAIN: CONCEAL WATER COOLER RECEPTACLE BEHIND WATER COOLER. SEE MECHANICAL/PLUMBING SHOP DRAWINGS FOR INSTALLATION REQUIREMENTS.
08	RECEPTACLE, DUPLEX, SWITCHED: NEMA 5-20R.
09	RECEPTACLE, DUPLEX, FLOOR, UNDER CARPET: NEMA 5-20R.
12	RECEPTACLE, DUPLEX, HOSPITAL GRADE: NEMA 5-20R.
13	RECEPTACLE, DUPLEX ON EMERGENCY POWER: NEMA 5-20R.
14	RECEPTACLE, DUPLEX, HOSPITAL GRADE ON EMERGENCY POWER: NEMA 5-20R.
16	RECEPTACLE, DUPLEX WITH GROUND FAULT CIRCUIT INTERRUPTER: NEMA 5-20R.
17	RECEPTACLE, DUPLEX WITH GROUND FAULT CIRCUIT INTERRUPTER, HOSPITAL GRADE: NEMA 5-20R.
18	RECEPTACLE, DUPLEX WITH GROUND FAULT CIRCUIT INTERRUPTER, HOSPITAL GRADE ON EMERGENCY POWER: NEMA 5-20R.
19	RECEPTACLE, DUPLEX WITH GROUND FAULT CIRCUIT INTERRUPTER, WEATHERPROOF: NEMA 5-20R.
22	RECEPTACLE, QUADRAPLEX: NEMA 5-20R.
23	RECEPTACLE, QUADRAPLEX ON EMERGENCY POWER: NEMA 5-20R.
24	RECEPTACLE, QUADRAPLEX, HOSPITAL GRADE: NEMA 5-20R.
25	RECEPTACLE, QUADRAPLEX, HOSPITAL GRADE ON EMERGENCY POWER: NEMA 5-20R.
27	RECEPTACLE, QUADRAPLEX WITH GROUND FAULT CIRCUIT INTERRUPTER: NEMA 5-20R.
28	RECEPTACLE, SPECIAL PURPOSE. PROVIDE RECEPTACLE TO MATCH EQUIPMENT PLUG.
29	RECEPTACLE, SPECIAL PURPOSE ON EMERGENCY POWER. PROVIDE RECEPTACLE TO MATCH EQUIPMENT PLUG.
32	RECEPTACLE, CLOCK HANGER: NEMA 5-15R.
33	MULTI-OUTLET ASSEMBLY: NEMA 5-20R.
34	DROP CORD. SEE DETAIL.
36	FLUSH FLOOR BOX. "F" SHOWN ON DRAWINGS. REFER TO WIRING DEVICE SCHEDULE IN THE ELECTRICAL SPECIFICATIONS FOR CONFIGURATION AND DEVICES.
37	POWER POLE. "P" SHOWN ON DRAWINGS. REFER TO WIRING DEVICE SCHEDULE IN THE ELECTRICAL SPECIFICATIONS FOR CONFIGURATION AND DEVICES.
39	SWITCH, DIMMER.
40	SWITCH, SINGLE POLE ("X" INDICATES FIXTURES CONTROLLED).
41	SWITCH, DOUBLE POLE ("X" INDICATES FIXTURES CONTROLLED).
42	SWITCH, THREE-WAY ("X" INDICATES FIXTURES CONTROLLED).
43	SWITCH, FOUR-WAY ("X" INDICATES FIXTURES CONTROLLED).
45	SWITCH, KEY OPERATED.
47	SWITCH, MOMENTARY.
52	RECEPTACLE, DUPLEX, TAMPER RESISTANT: NEMA 5-20R.
53	RECEPTACLE, QUADRAPLEX WITH GROUND FAULT CIRCUIT INTERRUPTER, HOSPITAL GRADE: NEMA 5-20R.
54	RECEPTACLE, QUADRAPLEX WITH GROUND FAULT CIRCUIT INTERRUPTER, HOSPITAL GRADE ON EMERGENCY POWER: NEMA 5-20R.
56	RECEPTACLE, SINGLE PLEX, WITH USB OUTLET
57	RECEPTACLE, DUPLEX, RECESSED, NEMA 5-20R, AUTOMATICALLY CONTROLLED THROUGH TIME OR OCCUPANCY BASED CONTROLS (REFER TO PLANS FOR CONTROL METHOD)
58	RECEPTACLE, QUADRAPLEX, RECESSED, NEMA 5-20R, AUTOMATICALLY CONTROLLED THROUGH TIME OR OCCUPANCY BASED CONTROLS (REFER TO PLANS FOR CONTROL METHOD)
59	INDICATES A RECEPTACLE IS AUTOMATICALLY CONTROLLED THROUGH TIME OR OCCUPANCY BASED CONTROLS (REFER TO PLANS FOR CONTROL METHOD)
FIRE ALARM	
07	FIRE ALARM CONTROL PANEL, SEMI-RECESSED.
08	CONTROL MODULE.
09	MONITOR MODULE.
10	FIRE ALARM MANUAL PULL STATION.
11	MAGNETIC DOOR HOLDER.
15	DETECTOR, SMOKE.
22	DETECTOR, SMOKE, DUCT WITH HOUSING AND SAMPLING TUBE
23	DETECTOR, HEAT.
24	INDICATOR LAMP.
25	STROBE.
27	ALARM, HORN/SPEAKER, WEATHERPROOF.
28	ALARM, HORN/STROBE, ONE ASSEMBLY.
37	SMOKE DAMPER.
38	FIRE AND SMOKE DAMPER.
40	DETECTOR, CARBON MONOXIDE.
42	ALARM, HORN/STROBE, ONE ASSEMBLY, CEILING MOUNTED. SUBSCRIPT INDICATES CANDELA RATING.
43	ALARM, HORN, CEILING MOUNTED. SUBSCRIPT INDICATES CANDELA RATING.
44	ALARM, STROBE, CEILING MOUNTED. SUBSCRIPT INDICATES CANDELA RATING.
46	LIGHTING RELAY, CONTACTOR PANEL, OR DIMMING ENCLOSURE.
55	SWITCH, TOGGLE MOTOR STARTER WITH OVERLOAD PROTECTION.
56	TRANSFORMER: NUMBER INDICATES KVA.
57	ACCESSIBLE DOOR ENTRY PUSH PLATE OPERATOR.

SYMBOLS LEGEND	
SYMBOL	DESCRIPTION
ELECTRICAL POWER AND DISTRIBUTION	
01	FUSE WITH RATING (ONE-LINE DIAGRAM).
02	DISCONNECT, FUSED (ONE-LINE DIAGRAM).
03	DISCONNECT, NONFUSED (ONE-LINE DIAGRAM).
04	DISCONNECT WITH FUSE AND MOTOR STARTER COMBINATION (ONE-LINE DIAGRAM).
05	OVERLOAD RELAY (ONE-LINE DIAGRAM).
06	STARTER (ONE-LINE DIAGRAM).
07	CIRCUIT BREAKER, MOLDED CASE (ONE-LINE DIAGRAM).
08	CIRCUIT BREAKER, MOLDED CASE WITH SHUNT TRIP (ONE-LINE DIAGRAM).
10	CIRCUIT BREAKER, SOLID STATE (ONE-LINE DIAGRAM).
11	CIRCUIT BREAKER, SOLID STATE WITH GROUND FAULT PROTECTION (ONE-LINE DIAGRAM).
12	MOTOR.
16	TRANSFORMER (ONE-LINE DIAGRAM).
17	TRANSFORMER, CURRENT (ONE-LINE DIAGRAM).
18	BATTERY (ONE-LINE DIAGRAM).
19	CAPACITOR (ONE-LINE DIAGRAM).
20	DELTA CONNECTION (ONE-LINE DIAGRAM).
21	WYE CONNECTION (ONE-LINE DIAGRAM).
23	PANELBOARD WITH MAIN LUGS ONLY. BUS SIZE AND PHASE AS SHOWN (ONE-LINE DIAGRAM).
24	PANELBOARD WITH MAIN CIRCUIT BREAKER. SIZE AND PHASE AS SHOWN (ONE-LINE DIAGRAM).
25	PANELBOARD WITH MAIN AND SUB FEED CIRCUIT BREAKER (ONE-LINE DIAGRAM).
26	PANELBOARD WITH MAIN LUGS ONLY AND SURGE PROTECTION WITH CIRCUIT BREAKER (ONE-LINE DIAGRAM).
29	PANELBOARD WITH SUB FEED LUGS (ONE-LINE DIAGRAM).
29	CT CABINET PER UTILITY'S REQUIREMENTS (ONE-LINE DIAGRAM).
31	TRANSFER SWITCH (ONE-LINE DIAGRAM).
32	DIGITAL MULTIMETER (ONE-LINE DIAGRAM).
33	SERVICE ENTRANCE SURGE PROTECTION (ONE-LINE DIAGRAM).
35	GENERATOR, POWER (ONE-LINE DIAGRAM).
36	METER.
38	VARIABLE FREQUENCY MOTOR CONTROLLER (ONE-LINE DIAGRAM).
41	DISCONNECT SWITCH, FUSED.
42	DISCONNECT SWITCH, UNFUSED.
43	STARTER, COMBINATION WITH DISCONNECT SWITCH.
44	STARTER OR MOTOR CONTROLLER.
45	PUSHBUTTON.
46	PUSHBUTTONS, MOTOR CONTROL.
47	PANELBOARD CABINET, FLUSH MOUNTED.
48	PANELBOARD CABINET, SURFACE MOUNTED, 1 SECTION.
49	PANELBOARD CABINET, SURFACE MOUNTED, 2 SECTION.
50	DISTRIBUTION PANEL OR SWITCHBOARD.
51	LIGHTING RELAY, CONTACTOR PANEL, OR DIMMING ENCLOSURE.
55	SWITCH, TOGGLE MOTOR STARTER WITH OVERLOAD PROTECTION.
56	TRANSFORMER: NUMBER INDICATES KVA.
57	ACCESSIBLE DOOR ENTRY PUSH PLATE OPERATOR.

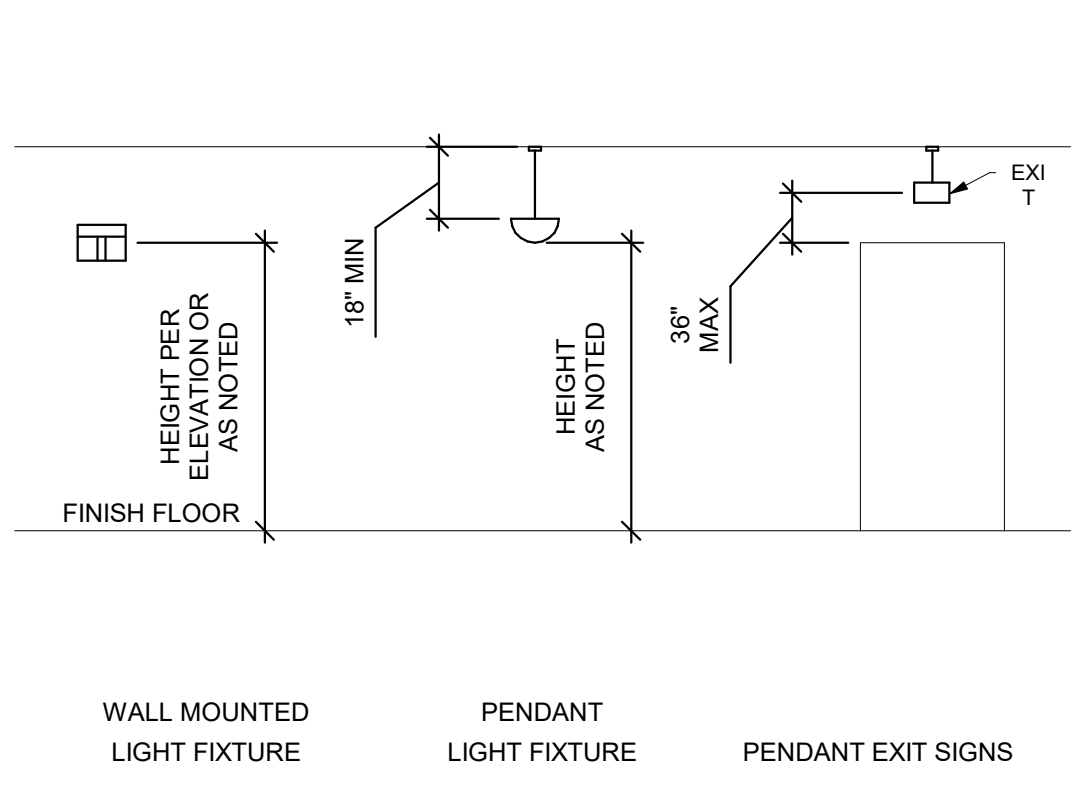
SYMBOLS LEGEND	
SYMBOL	DESCRIPTION
STRUCTURED CABLE IHC	
01	IHC COMMUNICATIONS DEVICE (1 DATA).
03	IHC COMMUNICATIONS DEVICE (1 DATA WALL PHONE).
04	IHC COMMUNICATIONS DEVICE (2 DATA).
05	IHC COMMUNICATIONS DEVICE (3 DATA).
06	IHC COMMUNICATIONS DEVICE (4 DATA).
07	IHC COMMUNICATIONS DEVICE (6 DATA).
08	IHC COMMUNICATIONS DEVICE PHYSIOLOGICAL MONITOR (1 DATA).
09	IHC COMMUNICATIONS DEVICE WIRELESS ACCESS POINT (2 DATA).
SECURITY	
01	SECURITY CABLE. SEE EQUIPMENT SCHEDULE FOR CABLE TYPE.
05	CARD ACCESS DOOR TYPE #1 OR AS NOTED. SEE SCHEDULE.
06	CARD READER.
07	KEYPAD/CARD READER COMBINATION.
TECHNOLOGY SYSTEMS	
01	TECHNOLOGY SYSTEM CABLE. SEE ELECTRICAL JOB EQUIPMENT LIST FOR APPLICABLE DESIGNATIONS. EXAMPLES: C = CONTROL CABLE G = GROUND CABLE, 10 AWG, 1 CONDUCTOR, GREEN I = INSULATED M = MICROPHONE CABLE S = SPEAKER CABLE, 70 VOLT SYSTEM Z = SPEAKER CABLE, 8 OHM SYSTEM
02	SPEAKER, CEILING MOUNTED.
03	SPEAKER, WALL MOUNTED.
16	SPEAKER, HIGH FREQUENCY.
17	SPEAKER, LOW FREQUENCY.
18	SPEAKER ENCLOSURE (CLUSTER).
19	CALL SWITCH, INTERCOM.
20	MICROPHONE, TABLE OR LECTERN MOUNTED.
21	EQUIPMENT CABINET.
22	MEDIA CONNECTION PLATE.
23	AUDIOVISUAL OUTLET.
24	SCREEN, PROJECTION, CEILING MOUNTED.
25	PROJECTOR, CEILING MOUNTED.
26	VIDEO CONFERENCING CAMERA.
27	CONTROL PANEL.
28	MICROPHONE INPUT.
29	MICROPHONE INPUT, FLOOR MOUNTED.
30	REMOTE CONTROL INPUT.
31	POWER SWITCH.
32	SPEAKER SWITCH OR INPUT.
33	SOURCE SWITCH/VOLUME CONTROL.
34	TAPE RECORD OUTPUT.
35	VOLUME CONTROL.
36	HUB CABINET.
37	VIDEO MONITOR.
38	AUDIO DISTRIBUTION AMPLIFIER.
39	AUDIO PATCH PANEL.
40	CONNECTION PANEL.
41	DIGITAL VERSATILE DISC (DVD) PLAYER.
42	ASSISTED LISTENING EMITTER PANEL.
43	SIGNAL RELAY DPDT WITH SOCKET.
44	LINE DRIVER (VARIZONE DIGITAL PAGING SYSTEM).
45	POWER AMP MODULE (VARIZONE DIGITAL PAGING SYSTEM).
46	RGBHV DISTRIBUTION AMPLIFIER.
47	REMOTE CONTROL PANEL.
48	RGBHV MATRIX SWITCHER.
49	TRANSIENT VOLTAGE SURGE SUPPRESSOR, AC LINE CONDITIONER.
50	VIDEO CASSETTE RECORDER.
51	COMPOSITE VIDEO DISTRIBUTION AMPLIFIER.
52	COMPOSITE VIDEO MATRIX SWITCHER.
53	VIDEO PATCH PANEL.
54	S-VIDEO MATRIX SWITCHER.
55	AMPLIFIER (ONE-LINE DIAGRAM).
56	POWER BRIDGE (VARIZONE DIGITAL PAGING SYSTEM).
57	TERMINATOR (VARIZONE DIGITAL PAGING SYSTEM).
58	DIODE (ONE-LINE DIAGRAM).
59	TRANSFORMER, ISOLATION/MATCHING (ONE-LINE DIAGRAM).
60	TRANSFORMER, # WATT (ONE-LINE DIAGRAM).
61	MICROPHONE, HANDHELD (ONE-LINE DIAGRAM).
62	AUXILIARY INPUT.
63	INFRARED SENSOR.

ABBREVIATIONS			
NOTE: ALL ABBREVIATIONS MAY NOT BE USED.			
1P	SINGLE POLE	KV	KILOVOLT
1PH	SINGLE-PHASE	KVA	KILOVOLT AMPERE
1WAY	ONE-WAY	KVAR	KILOVOLT AMPERE REACTIVE
2C	TWO-CONDUCTOR	KW	KILOWATT
2WAY	TWO-WAY	KWH	KILOWATT HOUR
3C	THREE-CONDUCTOR	LED	LIGHT EMITTING DIODE
3WAY	THREE-WAY	LFMC	LIQUID TIGHT FLEXIBLE METAL CONDUIT
4OUT	QUADRIPOLE RECEPTACLE OUTLET	LFNC	LIQUID TIGHT FLEXIBLE NONMETALLIC CONDUIT
4PDT	FOUR-POLE DOUBLE THROW	LPS	LOW PRESSURE SODIUM
4PST	FOUR-POLE SINGLE THROW	LRA	LOCKED ROTOR AMPS
4W	FOUR-WAY	LTG	LIGHTING
4WAY	FOUR-WAY	LV	LOW VOLTAGE
A	ABOVE COUNTER	MA TV	MASTER ANTENNA TELEVISION SYSTEM
AC	ARMORED CABLE	MAX	MAXIMUM
ADA	AMERICANS WITH DISABILITIES ACT	MCA	MINIMUM CIRCUIT AMPS
ADJ	ADJACENT	MCB	MAIN CIRCUIT BREAKER
AFF	ABOVE FINISHED FLOOR	MCC	MOTOR CONTROL CENTER
AFG	ABOVE FINISHED GRADE	MCP	MOTOR CIRCUIT PROTECTION
AIC	AMPERE INTERRUPTING CAPACITY	MDP	MAIN DISTRIBUTION PANEL
ALLUM	ALUMINUM	MGP	MOTOR GENERATOR
AMP	AMPERE	MH	MANHOLE
ANN	ANNUNCIATOR	MM	MINIMUM
AP	ACCESS POINT (WIRELESS DATA)	MLO	MAIN LUGS ONLY
AR	AS REQUIRED	MOCP	MAXIMUM OVERCURRENT PROTECTION
ASC	AMPS SHORT CIRCUIT CAPACITY	NC	NIGHT LIGHT
ATS	AUTOMATIC TRANSFER SWITCH	NO	NORMAL OPEN
AV	AUDIO VISUAL	NTS	NOT TO SCALE
AWG	AMERICAN WIRE GAGE	OC	ON CENTER
BB	BUCK-BOOST TRANSFORMER	OCB	OVER CURRENT PROTECTION
CB	CIRCUIT BREAKER	OCPI	OWNER FURNISHED CONTRACTOR INSTALLED
CBTA	CUSTOM COLOR AS SELECTED BY ARCHITECT	OFOI	OWNER FURNISHED OWNER INSTALLED
CBA	CUSTOM COLOR AS SELECTED BY ARCHITECT	OFPI	OWNER FURNISHED CONTRACTOR INSTALLED
CBK	CIRCUIT BREAKER	OPF	OBTAIN FROM PLANS
CCBA	CUSTOM COLOR AS SELECTED BY ARCHITECT	OHDR	OVERHEAD (COLING) DOOR
CFCI	CIRCUIT BREAKER WITH GROUND FAULT PROTECTION	OL	OVERLOAD
CFI	CIRCUIT BREAKER	PB	PUSHBUTTON
CFI	CIRCUIT BREAKER WITH GROUND FAULT PROTECTION	PF	PHASE FACTOR
CFI	CIRCUIT BREAKER WITH GROUND FAULT PROTECTION	PH	PHASE
CFI	CIRCUIT BREAKER WITH GROUND FAULT PROTECTION	PNL	PANEL
CFI	CIRCUIT BREAKER WITH GROUND FAULT PROTECTION	PT	POTENTIAL TRANSFORMER
CFI	CIRCUIT BREAKER WITH GROUND FAULT PROTECTION	PTZ	PAN/TILT/ZOOM
CFI	CIRCUIT BREAKER WITH GROUND FAULT PROTECTION	QTY	QUANTITY
CFI	CIRCUIT BREAKER WITH GROUND FAULT PROTECTION	R	REMOVE
CFI	CIRCUIT BREAKER WITH GROUND FAULT PROTECTION	RCP	REFLECTED CEILING PLAN
CFI	CIRCUIT BREAKER WITH GROUND FAULT PROTECTION	RMC	RIGID METAL CONDUIT
CFI	CIRCUIT BREAKER WITH GROUND FAULT PROTECTION	RNC	RIGID NONMETAL CONDUIT
CFI	CIRCUIT BREAKER WITH GROUND FAULT PROTECTION	RPM	REVOLUTIONS PER MINUTE
CFI	CIRCUIT BREAKER WITH GROUND FAULT PROTECTION	RR	REMOVE AND RELOCATE
CFI	CIRCUIT BREAKER WITH GROUND FAULT PROTECTION	RS	STARTER
CFI	CIRCUIT BREAKER WITH GROUND FAULT PROTECTION	SCA	SHORT CIRCUIT AMPS
CFI	CIRCUIT BREAKER WITH GROUND FAULT PROTECTION	SCBA	STANDARD COLOR AS SELECTED BY ARCHITECT
CFI	CIRCUIT BREAKER WITH GROUND FAULT PROTECTION	SCF	SQUARE FOOT (FEET)
CFI	CIRCUIT BREAKER WITH GROUND FAULT PROTECTION	SFBA	STANDARD FINISH AS SELECTED BY ARCHITECT

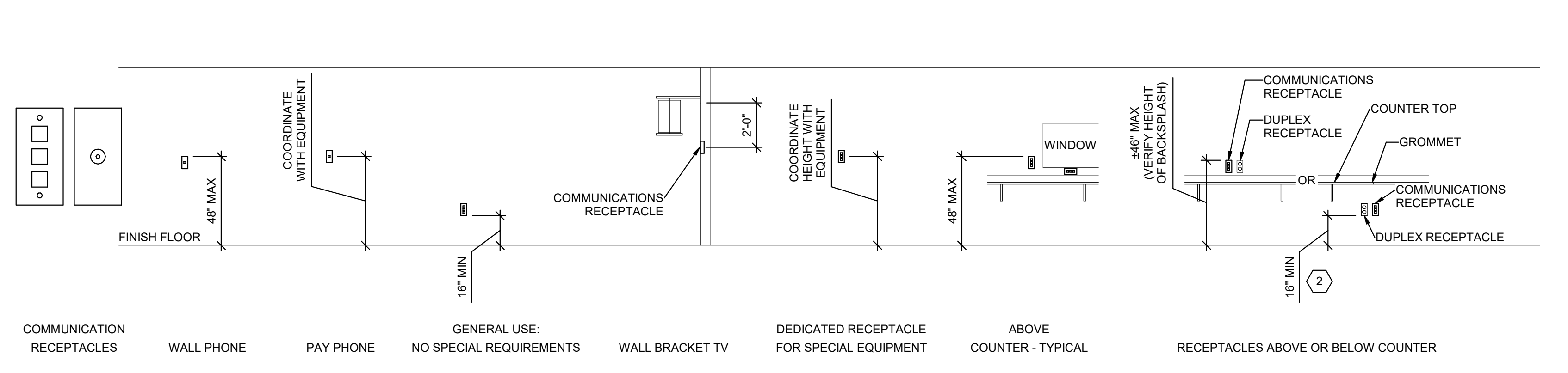
E2 RECEPTACLE MOUNTING DETAILS
SCALE: NTS



D2 ADA DETAIL
SCALE: NTS

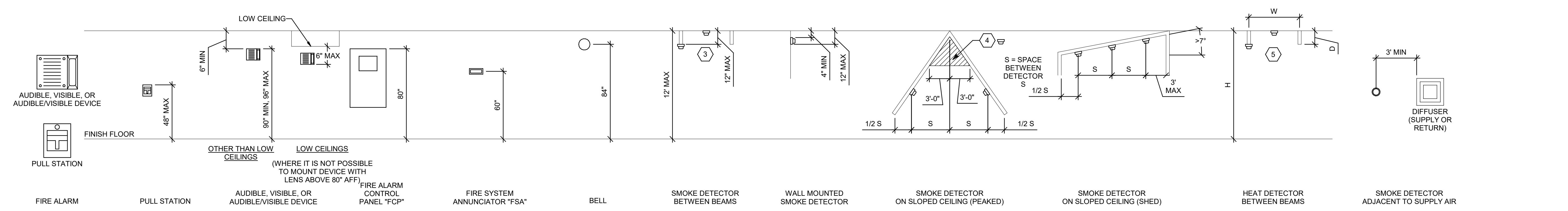


D3 SWITCH MOUNTING DETAILS
SCALE: NTS

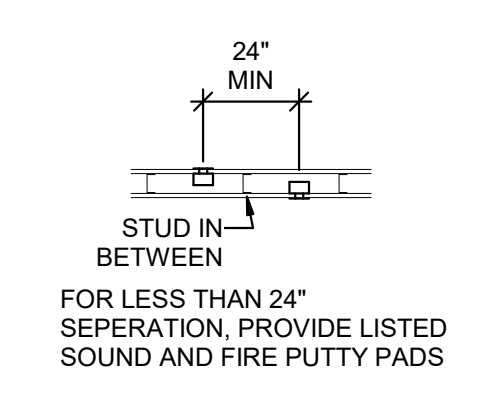


C2 LIGHTING MOUNTING DETAILS
SCALE: NTS

C3 COMMUNICATIONS MOUNTING DETAILS
SCALE: NTS

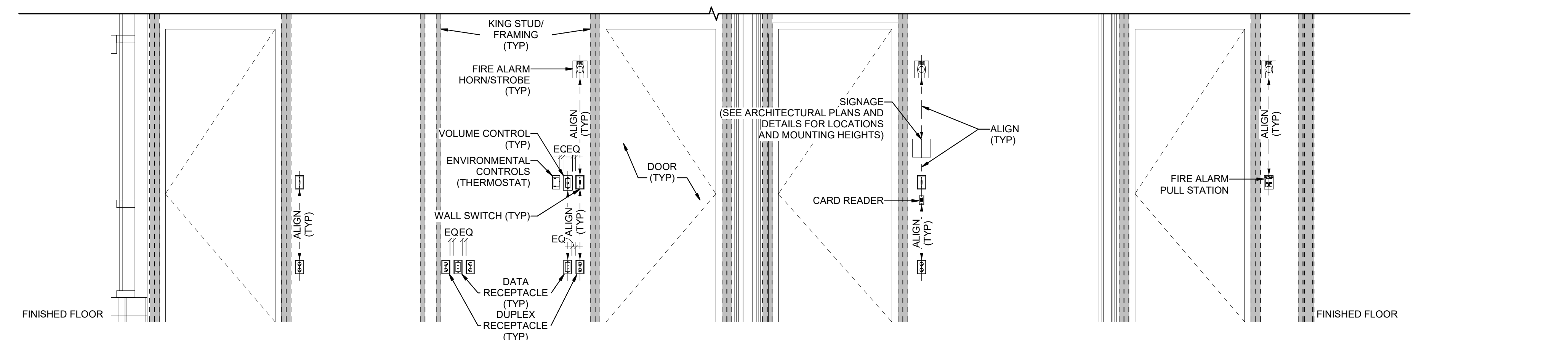


B1 FIRE ALARM MOUNTING DETAILS
SCALE: NTS



A1 BOX MOUNTING DETAILS
SCALE: NTS

A2 TYPICAL WALL MOUNTED DEVICES ALIGNMENT DETAIL
SCALE: NTS



GENERAL SHEET NOTES

1. DETERMINE MOUNTING HEIGHTS OF ELECTRICAL AND ELECTRONIC EQUIPMENT IN THE FOLLOWING ORDER OF PRIORITY:
1 - ELEVATIONS (ARCHITECTURAL, ELECTRICAL, MECHANICAL, ETC).
2 - EQUIPMENT SHOP DRAWINGS.
3 - FIELD INSTRUCTIONS.
2. LOCATE RECEPTACLES SERVING THE SAME TYPE OF USE AT A UNIFORM HEIGHT UNLESS DIRECTED OTHERWISE.
3. MECHANICAL, ELECTRICAL, AND COMMUNICATION ROOMS: COORDINATE LOCATION OF LIGHTING AND POWER RECEPTACLES WITH EQUIPMENT, PIPING, AND DUCTWORK. DO NOT INSTALL RECEPTACLES BEHIND EQUIPMENT OR WHERE OTHERWISE INACCESSIBLE. POSITION LIGHTING REGARDLESS OF WHERE SHOWN ON DRAWING TO PROVIDE PROPER ILLUMINATION.
4. MOUNT RECEPTACLE BOXES FOR SWITCHES AND RECEPTACLES WITH LONG AXIS OF THE DEVICE VERTICAL UNLESS OTHERWISE INDICATED.
5. SET BOXES WITH PLASTER RINGS FLUSH WITH FINISHED SURFACE.
6. LOCATE BOX COVERS OR DEVICE PLATES SO THEY WILL NOT SPAN DIFFERENT TYPES OF BUILDING FINISHES EITHER VERTICALLY OR HORIZONTALLY.
7. VERIFY ALL DOOR CONDITIONS ON ARCHITECTURAL DRAWINGS PRIOR TO INSTALLING SWITCHES.
8. LOCATE WIRING DEVICES WHICH ARE ADJACENT AND ARE COMPATIBLE VOLTAGES IN ONE PLATE.
9. WHERE DEVICES ARE LOCATED IN CLOSE PROXIMITY OF THE SAME VERTICAL PLANE, ALIGN DEVICES VERTICALLY PER THE TYPICAL WALL MOUNTED DEVICES ALIGNMENT DETAIL, UNLESS OTHERWISE INDICATED.

SHEET KEYNOTES

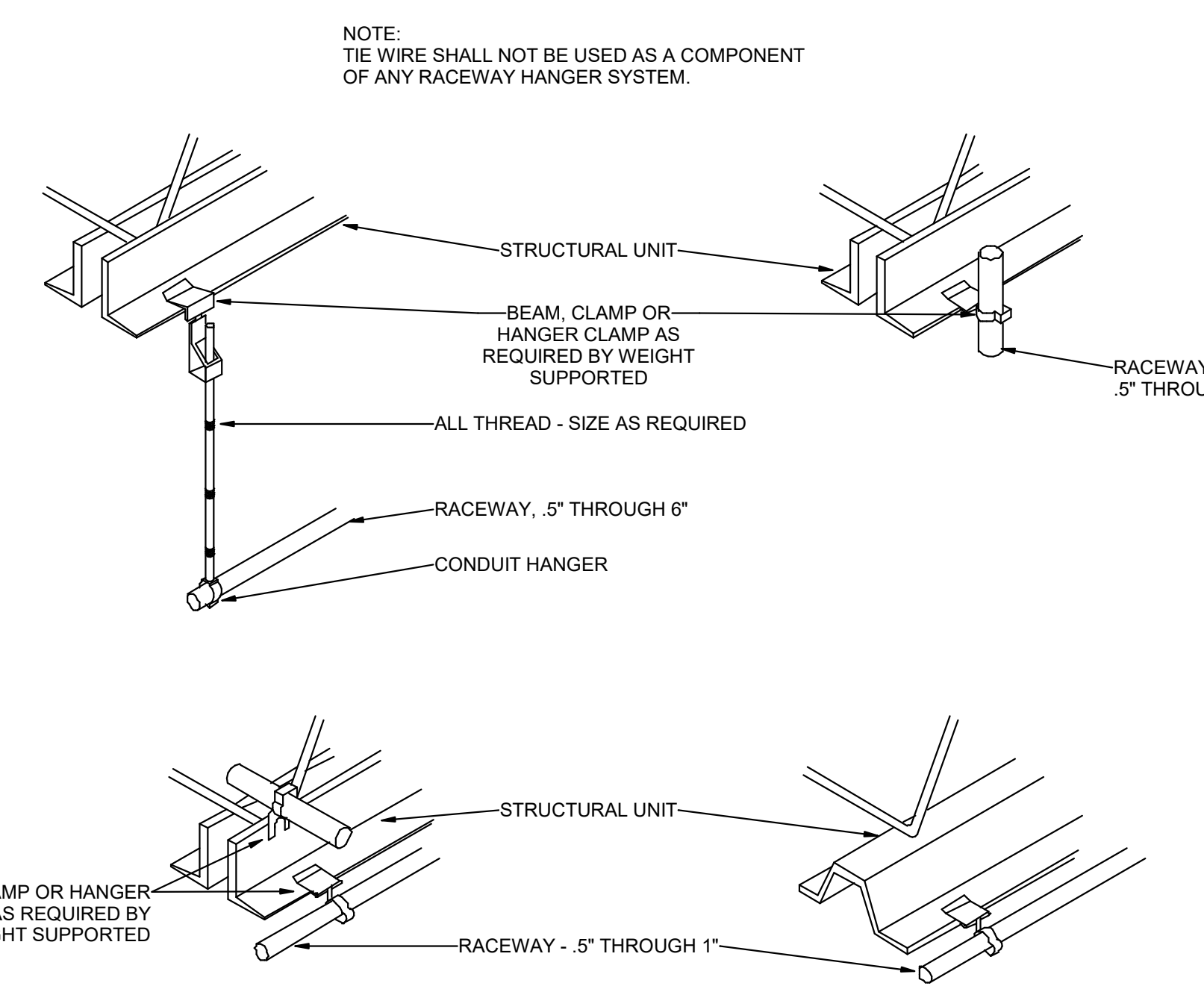
1. LOCATE RECEPTACLES BEHIND DRINKING FOUNTAINS.
2. REFER TO ARCHITECTURAL ELEVATIONS FOR PLACEMENT OF OUTLETS.
3. LOCATE AT BOTTOM OF BEAMS (OR JOISTS) OR AT CEILING. (REDUCE SPACING BY 5 PERPENDICULAR TO BEAM OR JOIST DIRECTION.) FOR OTHER CONDITIONS, REFER TO NFPA 72.
4. LOCATE DETECTOR ANYWHERE IN SHADED AREA BUT NOT IN TOP 4" OF PEAK.
5. LOCATE AT BOTTOM OF BEAMS IF D/N < 1 OR W/H < 4. OTHERWISE, LOCATE IN BEAM FOOT. FOR D > 4 REDUCE SPACING .33 PERPENDICULAR TO BEAMS.

LIGHTING/SPACE CONTROL TYPE SCHEDULE

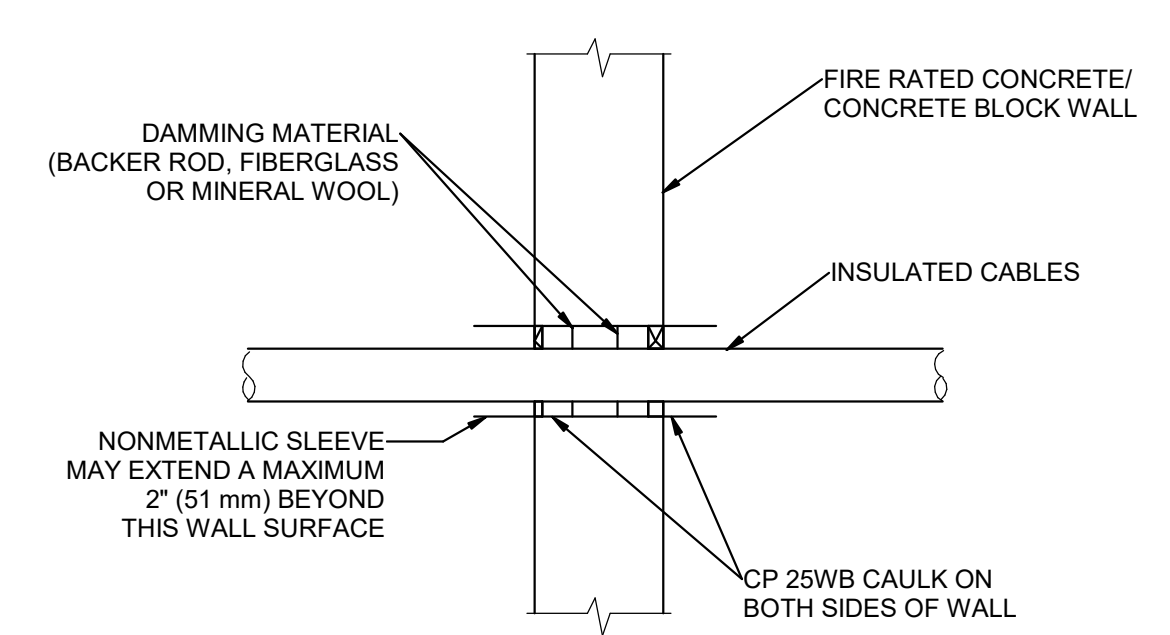
WIRING LEGEND	APPROVED MANUFACTURERS	LIGHTING CONTROL ID	GENERAL NOTES	GENERAL NOTES															
_____ LINE VOLTAGE WIRING - - - - - 0-10V WIRING CAT5E CABLING _____ WIRING BY OTHERS ○ TMP SEGMENT NETWORK CABLING	1. WATTSTOPPER (BASIS OF DESIGN) 2. NLIGHT 3. HUBBEL BUILDING AUTOMATION 4. GREENGATE	1. # = NUMBER OF ZONES 2. D = DIMMING, S = SWITCHING 3. P = DAYLIGHT PHOTOCELL 4. L = PLUG LOAD CONTROLLER 5. # = INSTANCE	1. COORDINATE INITIAL PROGRAMMING WITH OWNER AND MODIFY CONTROL TIMES AND OPERATION AS REQUESTED BY OWNER. 2. PROVIDE FINE TUNING PROGRAMMING AND ADJUSTMENTS UPON REQUEST BY OWNER WITHIN FIRST 6 MONTHS AFTER SUBSTANTIAL COMPLETION. 3. PROVIDE CUSTOMIZED ENGRAVED PERMANENT BUTTON LABELS ON EACH SWITCH, LABEL TO MATCH BUTTON LABEL ID OR AS DIRECTED BY OWNER. 4. PART NUMBERS SHOWN ARE BASED ON WATTSTOPPER AS THE BASIS OF DESIGN. ALL APPROVED MANUFACTURERS ARE SUBJECT TO MEETING ALL FUNCTIONS AND CAPABILITIES OF THE BASIS OF DESIGN SYSTEM AND PRODUCTS. FAILURE TO MEET THESE SHALL REQUIRE THE CONTRACTOR TO PROVIDE A SYSTEM THAT DOES AT NOT ADDITIONAL COST.	5. REFER TO PLANS FOR LOCATIONS AND QUANTITIES OF DEVICES. 6. INSTALL ONE OF EACH CONTROL TYPE WITH PROGRAMMING, ADJUST, AND OBTAIN OWNERS APPROVAL PRIOR TO PROGRAMMING THE REMAINING CONTROLS. 7. WIRING MAY VARY BETWEEN MANUFACTURERS. CONTRACTOR IS RESPONSIBLE FOR PROVIDING THE REQUIRED WIRING THAT WILL BOTH MEET THE MANUFACTURERS REQUIREMENTS AND MATCH WITH THE SHOWN SYSTEM. 8. PROVIDE COMPLETE SHOP DRAWING SUBMITTALS INCLUDING OCCUPANCY SENSOR LAYOUT AND COVERAGE PATTERNS. PROVIDE ADDITIONAL SENSORS AS REQUIRED FOR 100% COVERAGE OF SPACES WITH OCCUPANCY SENSOR CONTROL.															
ID	DETAIL	LIGHTS ON CONTROL	LIGHTS OFF CONTROL	LIGHTING CONTROL TYPE	DAYLIGHT SENSOR SETTING (FC)	TIME DELAY TO OFF (MIN.)	BAS AUX RELAY SIGNAL	PLUG LOAD CONTROLLER	NETWORKED CONTROLS	BUTTON_1	BUTTON_2	BUTTON_3	BUTTON_4	BUTTON_5	BUTTON_6	BUTTON_7	BUTTON_8	BUTTON_9	NOTES
4D1		MANUAL & OCCUPANCY	MANUAL OR OCCUPANCY	DIMMING 0-10V	30	15	RELAY CLOSED ON OCCUPANCY	-	-	FUNCTION: PRESS TOP-ON, HOLD TOP-RAISE FOR DIMMING LABEL ID: "ZONE a"	FUNCTION: PRESS-SELEC T ZONE "b" FOR DIMMING LABEL ID: "ZONE b"	FUNCTION: PRESS-SELEC T ZONE "c" FOR DIMMING LABEL ID: "ZONE c"	FUNCTION: PRESS-SELEC T ZONE "d" FOR DIMMING LABEL ID: "ZONE d"	FUNCTION: PRESS-SELEC T ZONE "e" FOR DIMMING LABEL ID: "ZONE e"	FUNCTION: PRESS-SELEC T ZONE "f" FOR DIMMING LABEL ID: "ZONE f"	FUNCTION: PRESS-SELEC T ZONE "g" FOR DIMMING LABEL ID: "ZONE g"	FUNCTION: PRESS-SELEC T ZONE "h" FOR DIMMING LABEL ID: "ZONE h"	FUNCTION: PRESS-SELEC T ZONE "i" FOR DIMMING LABEL ID: "ZONE i"	COORDINATE PRE-SET SCENE WITH OWNER, AV INTEGRATION REQUIRED

INTERIOR LIGHTING FIXTURE SCHEDULE

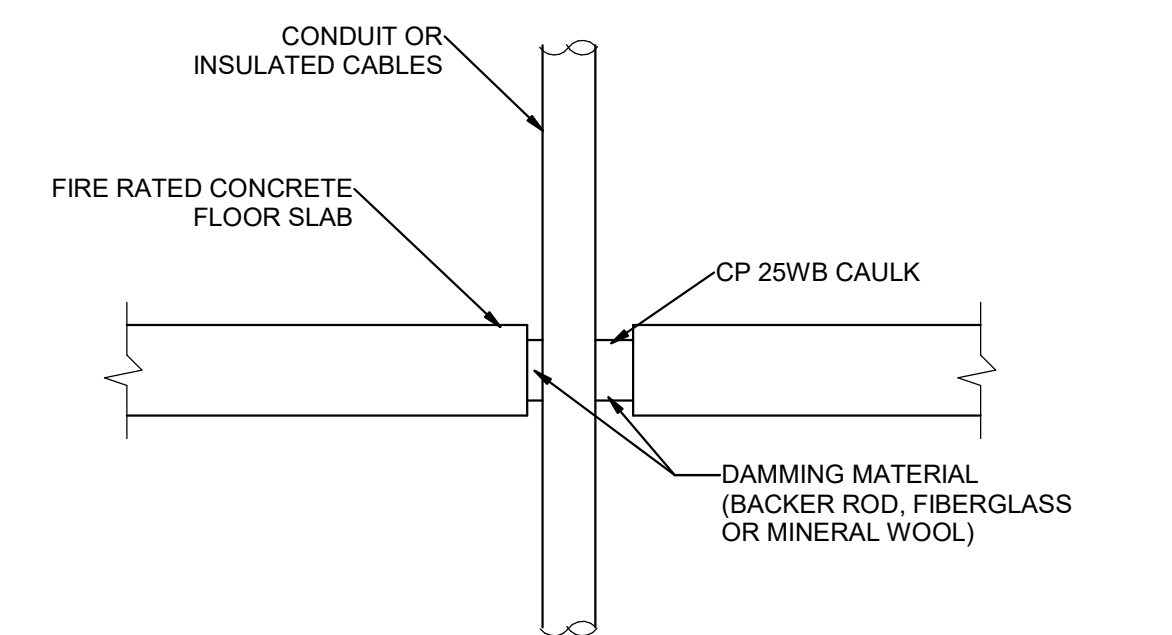
ABBREVIATIONS										GENERAL NOTES																																																
MOUNTING					LUMINAIRE OPTIONS					FINISH					DIFFUSER/LENS					REFLECTOR																																						
B - BASE	C - CEILING	F - FLANGE	G - GRID	P - PENDANT	PL - POLE	R - RECESSED	S - SURFACE	W - WALL	ARHR - AIR RETURN AND HEAT REJECTION	DL - DAMP LOCATION	EOC - EARTHQUAKE CLIPS	F - FURING	HLD - HINGED AND LATCHED DOOR	HS - HOUSE SIDE SHIELD	PS - PHOTOCELL SWITCH	QMS - QUARTZ RESTRIKE	ST - STATIC	WG - WIRE GUARD	WL - WET LOCATION	MW - MATTE WHITE	BL - BLACK	SL - SILVER	CL - CLEAR	EA - EXTRUDED ALUMINUM	S - STEEL	GS - GALVANIZED STEEL	C - CAST	CBA - COLOR BY ARCHITECT	SCBA - STANDARD COLOR BY ARCHITECT	CCA - CUSTOM COLOR BY ARCHITECT	FS 2000 - MEETS FEDERAL STANDARD 2000	TP - THERMALLY PROTECTED	FL - FLUSH	R - REGRESS	M - MITERED	BA - ACRYLIC #THICK	GA - ACRYLIC #THICK (OPAL)	GC - GLASS (CLEAR)	GO - GLASS (OPAL)	GF - GLASS (FROSTED)	SGL - SOFT GLOW LENS	EA - EXTRUDED ALUMINUM	DO - DROP OPAL	CGL - CONVEX GLASS LENS	S - SATIN LENS	OP - NONE/OPEN	SP - SPECULAR	SS - SEMI-SPECULAR	D - DIFFUSE (WHITE ENAMEL)	SC - SPECULAR (COLORED)	PR - PRISMATIC	FDR - FULL DEPTH REFLECTOR	DB - DIFFUSE (SEMI-SPECULAR) SILVER	LR - LOW IRIDESCENT	IR - IRIDESCENT	SL - SILVER	GL - GOLD	CA - CLEAR ALZAK
										<p>1. PROVIDE UNIT PRICES AND FIXTURE BRAND SELECTED FOR ADD/DELETE CHANGES FOR EACH FIXTURE TYPES SHOWN WITHIN 48 BUSINESS HOURS OF THE BID DATE. FAILURE TO COMPLY WITH THIS REQUIREMENT MAY DISQUALIFY THE PRODUCTS AND EMPOWER THE ENGINEER TO DETERMINE FAIR VALUE FOR FIXTURE AND INSTALLATION CHANGES, WITHOUT FURTHER INPUT FROM THE CONTRACTOR OR INSTALLER.</p> <p>2. CONTRACTOR ALLOWANCE PRICES ARE ACCURATE WHEN THIS JOB WAS SPECIFIED. CONTRACTOR AND ELECTRICAL DISTRIBUTOR SHALL VERIFY THIS ALLOWANCE AND REPORT ANY PROBLEMS TO THE ENGINEER BEFORE THE BID. ALLOWANCE PRICE MAY OR MAY NOT INCLUDE LAMP(S) OR FREIGHT AS NOTED, AND DO NOT INCLUDE ANY TAXES.</p> <p>3. SUBSTITUTIONS AND/OR EQUAL FIXTURES MUST RECEIVE APPROVAL PRIOR TO BIDDING, THEY MUST BE SUBMITTED TO THE ENGINEER NO LESS THAN 2 WEEKS PRIOR TO BID OPENING.</p> <p>4. SAMPLES MUST BE PROVIDED FOR ANY AND ALL FIXTURES UPON A/E REQUEST PRIOR TO RELEASING FIXTURES.</p> <p>5. ALL FIXTURES SHALL BE LISTED AND APPROVED FOR THEIR INTENDED USE AND LOCATION.</p> <p>6. VERIFY THE PROPER MOUNTING KITS OR ACCESSORIES TO FACILITATE INSTALLATION AS SHOWN AT EACH LOCATION ON THE DRAWINGS.</p> <p>7. COMPLY WITH THE "INTERIOR LIGHTING" SECTION OF THE SPECIFICATIONS.</p> <p>8. REFER TO SPECIFICATIONS FOR IMPORTANT TECHNICAL REQUIREMENTS FOR LIGHTING FIXTURES, DRIVERS, AND LAMPS.</p> <p>9. ALL LIGHT FIXTURES TO BE EITHER "DLC" OR "LIGHTING FACTS" LISTED OR TO BE APPROVED BY ARCHITECT/ENGINEER AND OWNER.</p>																																																
ID	DESCRIPTION	LENGTH	DEPTH	HEIGHT	DIAMETER/APERTURE	MOUNTING	TYPE	COLOR TEMP	CRI	DRIVER CONFIGURATION	VOLTAGE	WATTS	FINISH	FIXTURE LUMENS	DIFFUSER/LENS	REFLECTOR	OPTIONS	NOTES	OPTION 1	OPTION 2	OPTION 3																																					
(DX-1)	6" ROUND, RECESSED LED DOWNLIGHT, SEMI-SPECULAR REFLECTOR, WHITE TRIM FINISH	-	-	-	0" - 6"	CR	LED	3500K	-	0-10V DIMMING (10%)	120/277	19	-	1500	-	-	-	-	GOTHAM (EVO-35/15-6AR-WD-LSS-MVOLT-E210)	LITON (LHALD612C034UE-D10/LRALD65WF160-B80-T35)	PORTFOLIO (LD8815D010/EU8B10208/0356L8W21H H820)																																					
(DX-23)	6" ROUND, RECESSED LED DOWNLIGHT, SEMI-SPECULAR REFLECTOR, WHITE TRIM FINISH	-	-	-	0" - 6"	CR	LED	3500K	-	0-10V DIMMING (10%)	120/277	19	-	1500	-	-	-	-	GOTHAM (EVO-LW-35-15-6AR-LSS-MVOLT-E210)	LITON (LHALD625-C070UE-D10-C260-SWF-101)	PORTFOLIO (LD88-1500-D010-EU8B-10-20-90-35-6LB-SW-0-L)																																					
(NF-8)	4" X 8" LINEAR RECESSED SLOT, GRID MOUNT	8" - 0"	0" - 2"	-	-	CR	LED	3500K	-	0-10V DIMMING (10%)	120/277	80	-	6400	-	-	-	-	PRUDENTIAL (P23-FLSH-LED24-SO-8-T MW-SAL-D1-SC-UNV-X3B-DM10)	-	-																																					



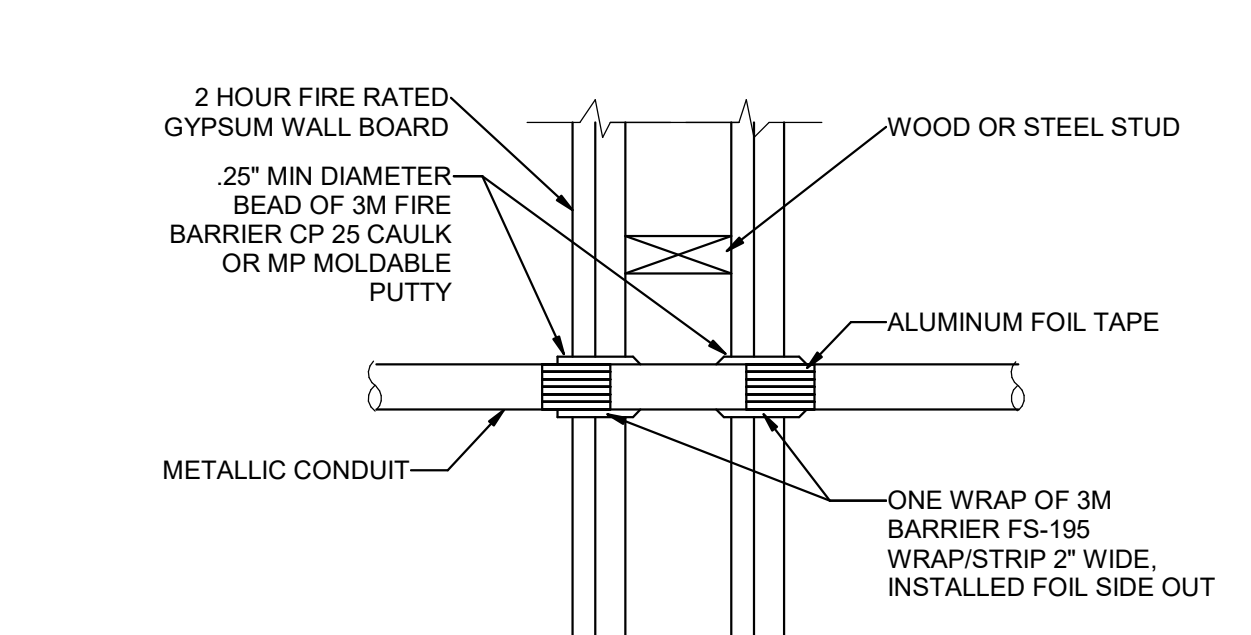
(C5) TYPICAL RACEWAY SUPPORT METHODS DETAIL
SCALE: NTS



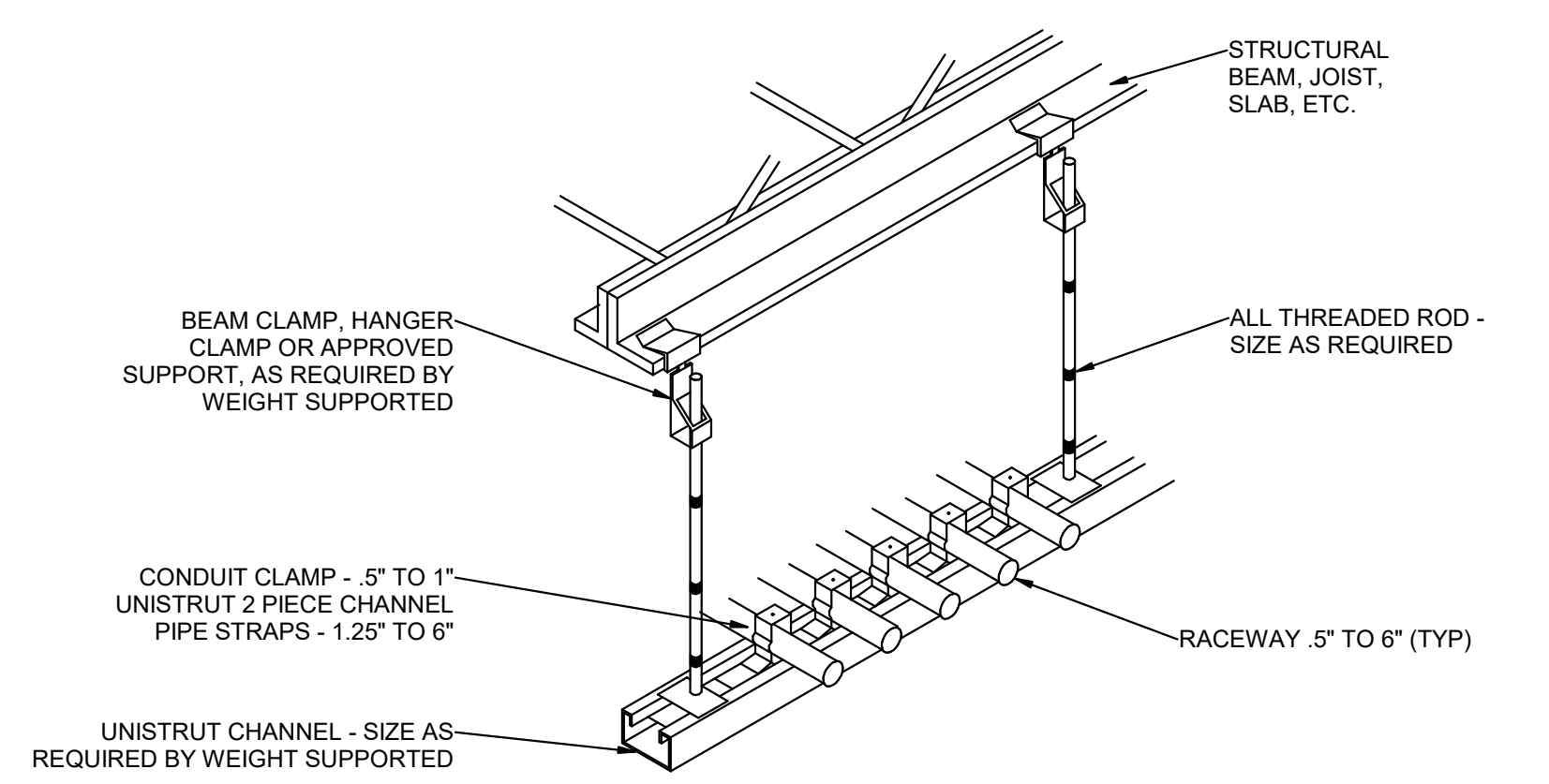
(B1) TYPICAL FIRE STOP FOR CABLES/CONDUIT THROUGH CONCRETE WALLS
SCALE: NTS



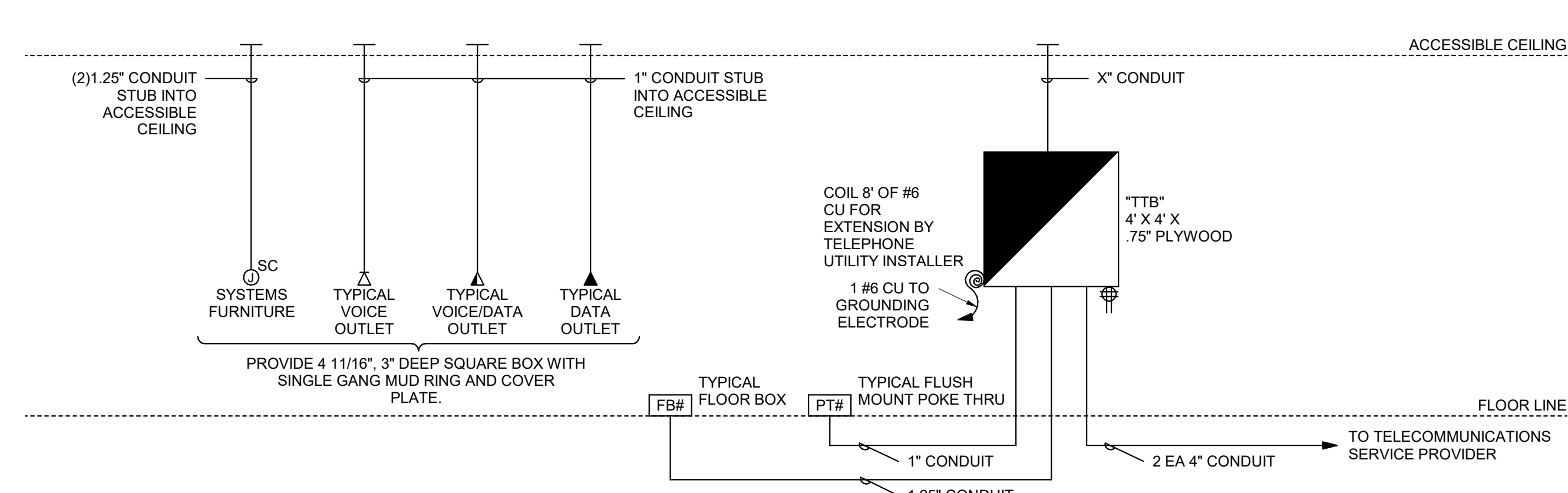
(B2) TYPICAL FIRE STOP FOR CABLES/CONDUIT THROUGH CONCRETE FLOORING
SCALE: NTS



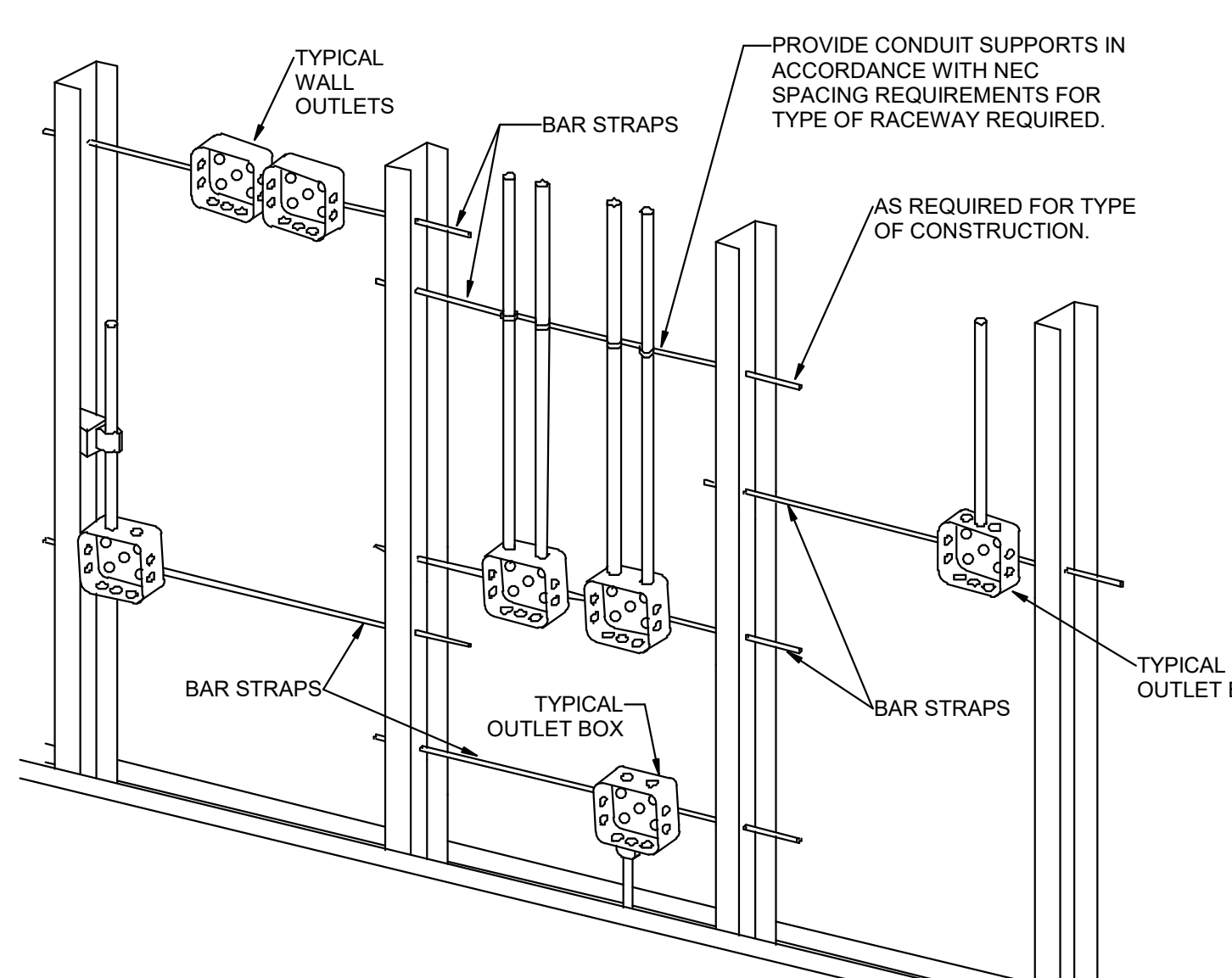
(B3) FIRE STOP FOR METAL CONDUIT THROUGH GYPSUM WALL BOARD
SCALE: NTS



(A1) TYPICAL CONDUIT RACK DETAIL
SCALE: NTS



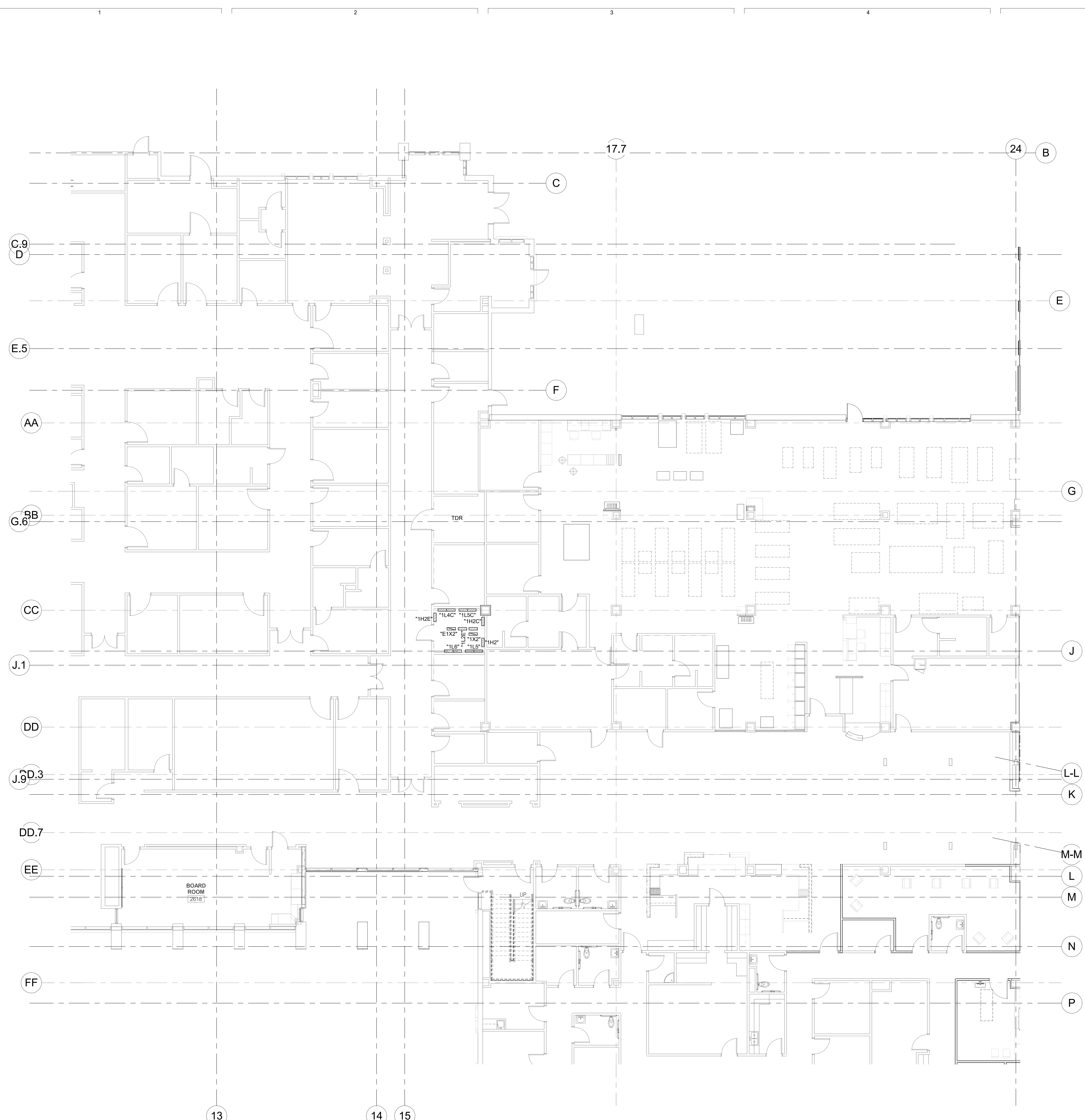
(A2) VOICE/DATA RISER DIAGRAM
SCALE: NTS



(A5) TYPICAL ROUGH-IN REQUIREMENTS DETAIL
SCALE: NTS

REV	DATE	DESCRIPTION

VCBO NUMBER: 13630
DATE: 4-11-2018



A1 LEVEL 1 OVERALL PLAN
SCALE: 1/8" = 1'-0"



GENERAL SHEET NOTES

- 1 PROVIDE A DEDICATED NEUTRAL FOR ALL BRANCH CIRCUITS.
- 2 PROVIDE NEW TYPED PANEL SCHEDULES FOR ALL PANELS AFFECTED DURING CONSTRUCTION.
- 3 ALL RECEPTACLES LOCATED WITHIN 6' OF THE EDGE OF A SINK SHALL BE GFCI PROTECTED.

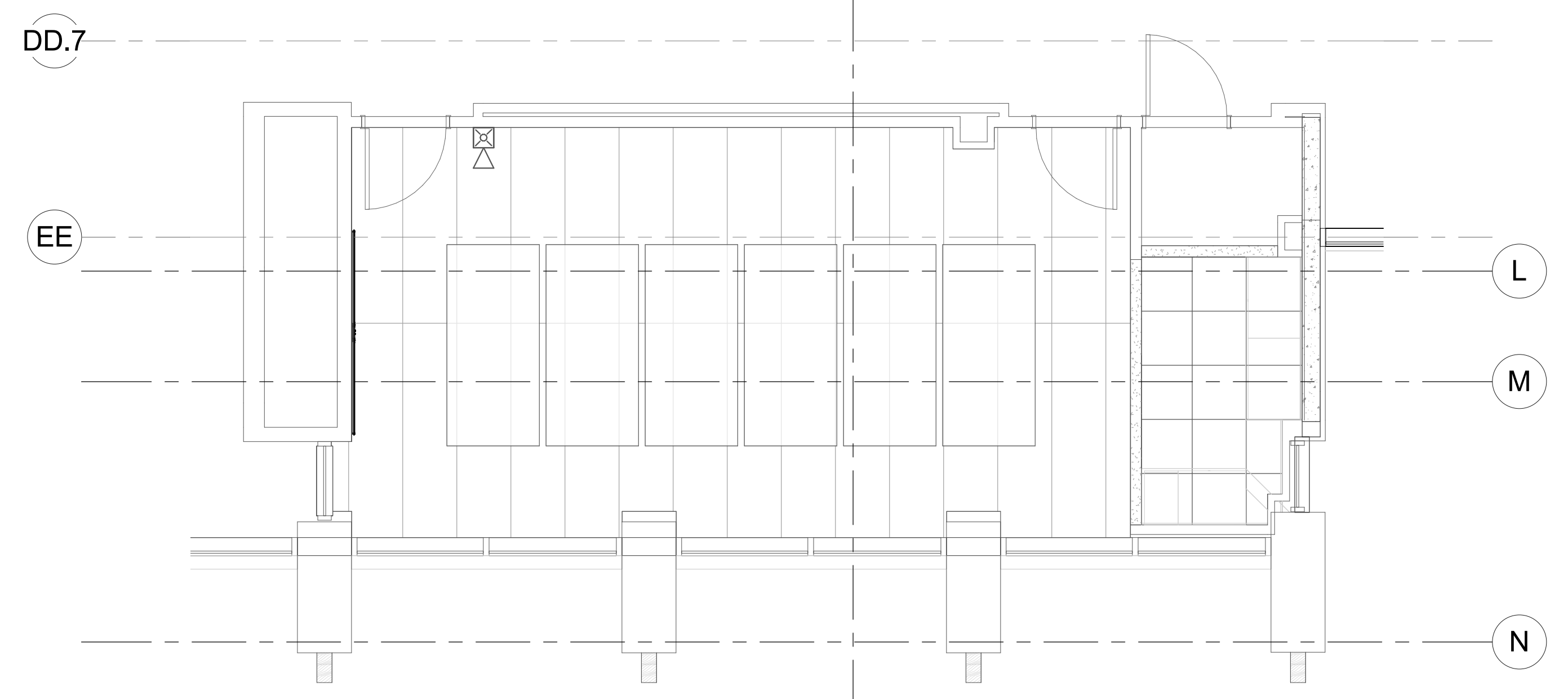
GENERAL DEMO NOTES

- 1 UNLESS OTHERWISE INDICATED, REMOVE ALL LIGHTING FIXTURES, OUTLETS, DEVICES AND EQUIPMENT IN HATCHED AREAS. REMOVE ASSOCIATED CONDUIT AND WIRING BACK TO THE PANEL BOARD OF ORIGIN. SYSTEMATICALLY CHECK EACH BRANCH PANEL BOARD CIRCUIT TO VERIFY THAT EACH CIRCUIT BREAKER NO LONGER HAS ANY ACTIVE LOAD. DISCONNECT THE WIRING AND TURN THE CIRCUIT BREAKER OFF. ANY REMAINING ACTIVE LOADS SHALL BE LABELED AND THE PANEL BOARD AS TO WHAT LOAD IS SERVED.
- 2 UNLESS NOTED OTHERWISE REMOVE ALL LIGHTING FIXTURES AND EQUIPMENT SHOWN DASHED. REMOVE CONDUIT AND WIRING BACK TO THE PANEL BOARD OF ORIGIN OR TO THE FIRST ACTIVE DEVICE THAT REMAINS.
- 3 SALVAGE ALL LIGHT FIXTURES, TWIST LOCK RECEPTACLES AND WALL PLATES, CEILING SPEAKERS AND SECURITY AND FIRE ALARM DEVICES TO OWNER. PROTECT SALVAGED EQUIPMENT FROM DAMAGE.
- 4 PRIOR TO SUBMITTING BID, VISIT THE SITE AND FIELD VERIFY THE EXTENT OF ELECTRICAL DEMOLITION WORK TO MEET THE INTENT OF THE BID DOCUMENTS AND INCLUDE ALL COSTS IN BID.
- 5 PRIOR TO THE REMOVAL OF ANY ELECTRICAL EQUIPMENT OR WIRING, FIELD VERIFY THAT THE EQUIPMENT OR WIRING IS INACTIVE OR NO LONGER IN USE.
- 6 REMOVE ALL DEVICES, RACEWAYS, AND WIRING FROM WALL TO BE REMOVED. WHERE ACTIVE RACEWAY OCCURS IN WALLS TO BE REMOVED, REROUTE THE RACEWAY WITH TEH ASSOCIATED WIRING TO KEEP THE CIRCUIT OPERATIONAL.
- 7 REMOVE ALL FIRE ALARM DEVICES WHERE EXISTING WALLS AND CEILINGS ARE BEING REMOVED. WITH ASSOCIATED CONDUIT AND WIRING. EXISTING FIRE ALARM DEVICES AND SYSTEM NOT INDICATED FOR REMOVAL, SHALL REMAIN ACTIVE THROUGHOUT DEMOLITION AND CONSTRUCTION UNTIL THE NEW SYSTEM IS TESTED AND OPERATIONAL. MAINTAIN ALL CLASS A FIRE ALARM INITIATING AND INDICATING LOOPS WHERE EXISTING DEVICES ARE REMOVED.
- 8 REMOVE ALL ABANDONED RACEWAY, CONDUIT, WIRING AND CABLING WHETHER ABANDONED PREVIOUS TO THIS PROJECT OR AS A RESULT OF THIS PROJECT. NOT ALL ABANDONED ITEMS ARE SHOWN ON THESE PLANS AND FIELD VERIFICATION OF DEMOLITION SCOPE EXTENT IS REQUIRED.
- 9 DEVICES MARKED 'RR' ARE TO BE REMOVED AND RELOCATED PER NEW PLANS. EXTEND CIRCUITING AS REQUIRED FOR RELOCATION.

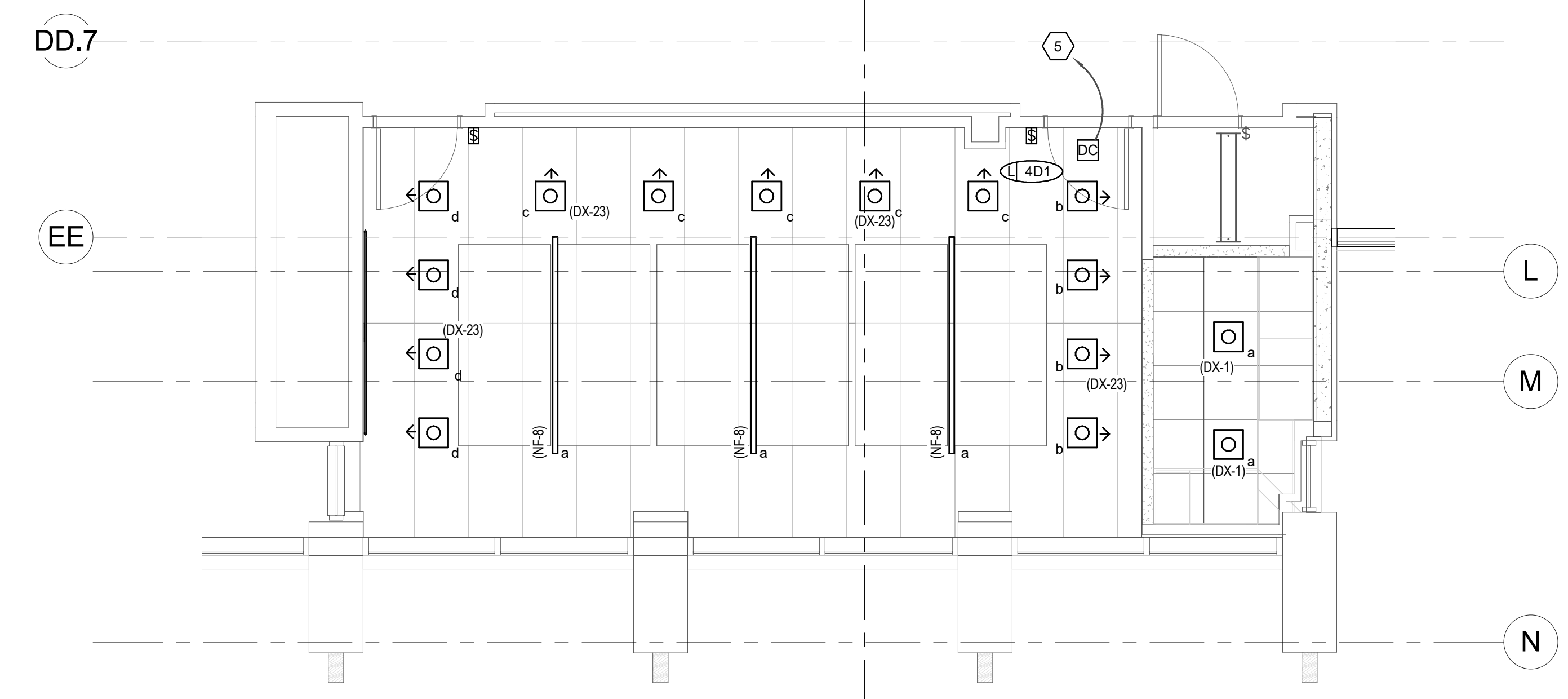
SHEET KEYNOTES

- 1 DEMOLISH POWER TO EXISTING PROJECTION SCREEN ENCLOSURE.
- 2 CONNECT TO EXISTING 120V CIRCUIT.
- 3 PROVIDE 4" SQUARE BACKBOX WITH SINGLE GANG MUD RING AND A 1.25" CONDUIT STUBBED TO ABOVE THE ACCESSIBLE CEILING FOR AV CONNECTIONS. VERIFY AND COORDINATE AV ROUGH-IN REQUIREMENTS WITH CACHE VALLEY ELECTRIC.
- 4 DEMOLISH EXISTING LIGHTING CONTROL STATIONS AND ASSOCIATED DIMMING CONTROL PANEL.
- 5 CONNECT TO THE EXISTING LIGHTING CIRCUIT THAT PREVIOUSLY FED THE LIGHTS IN THIS ROOM.

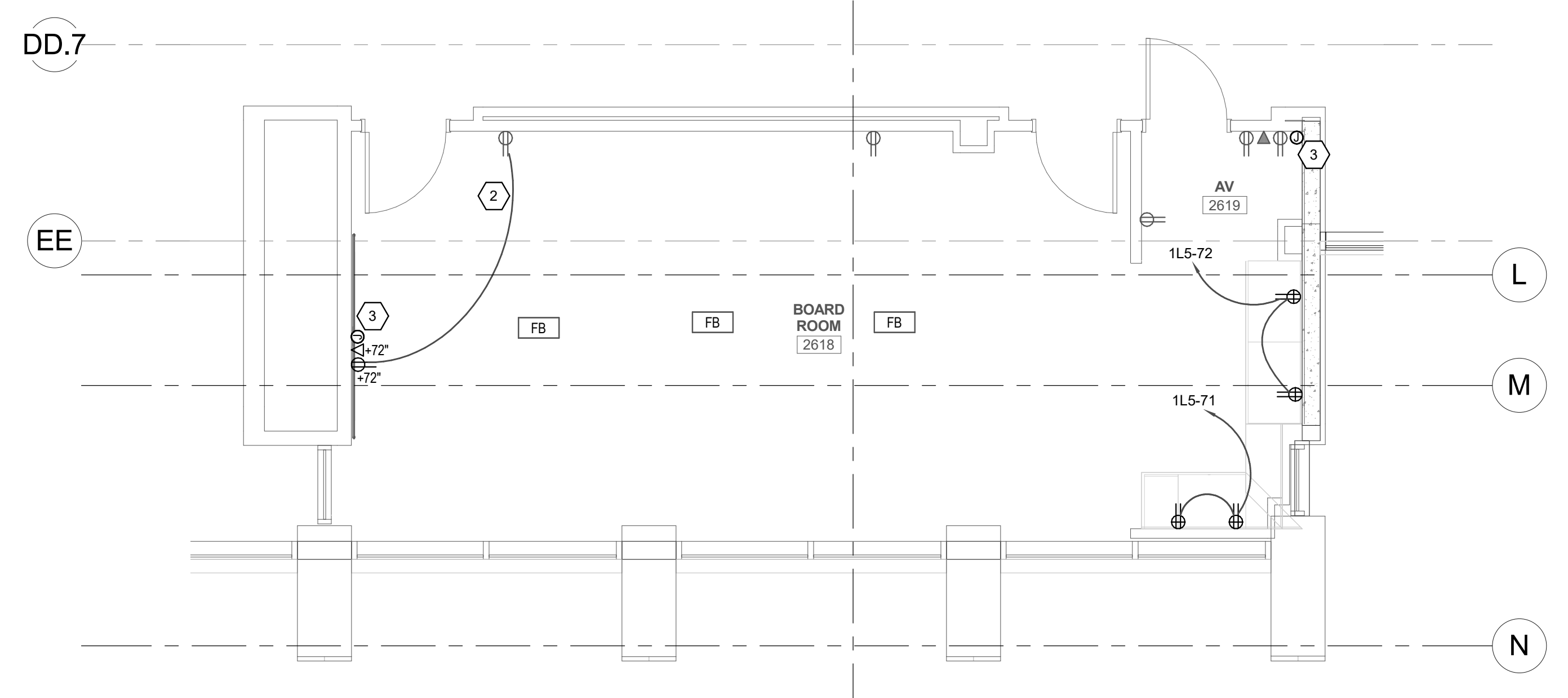
13630
4-11-2018



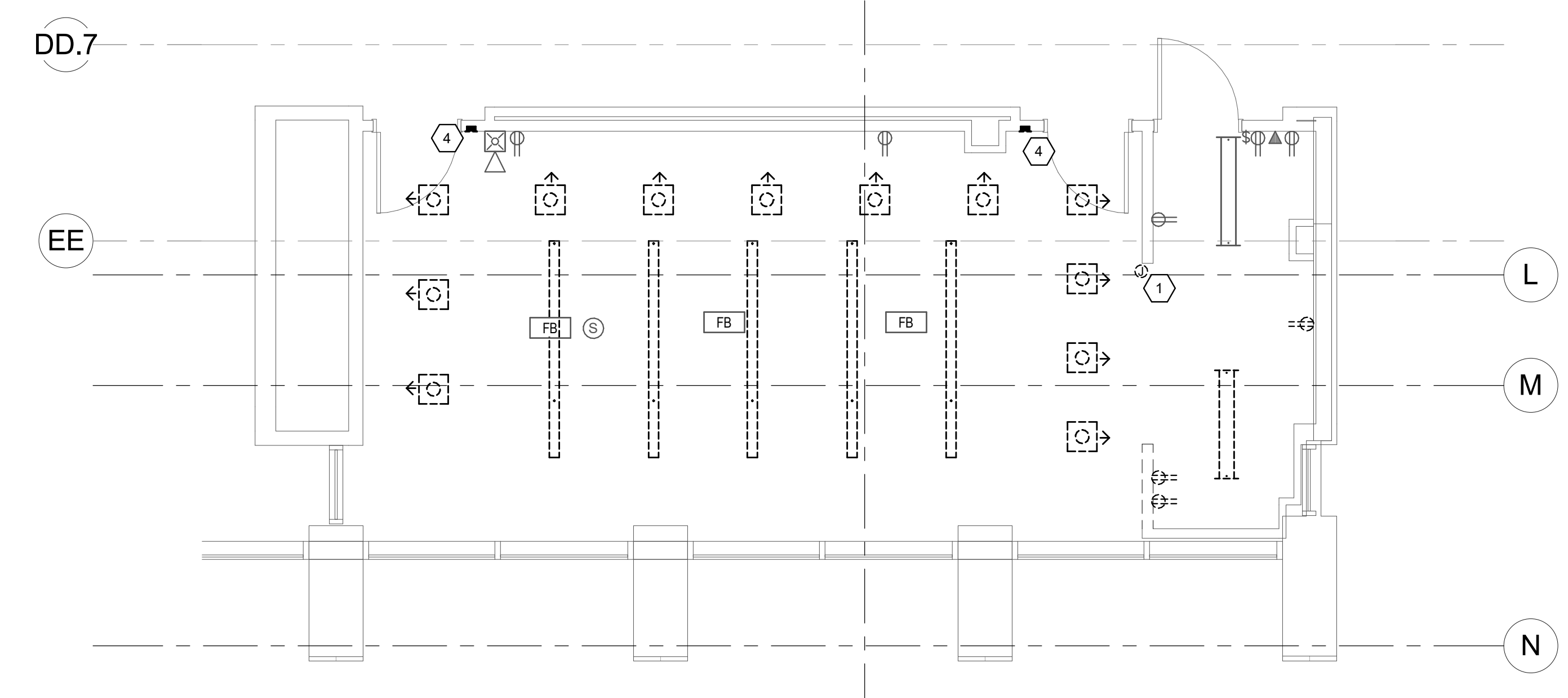
C1 LEVEL 1 AUXILIARY PLAN
SCALE: 1/4" = 1'-0"



C3 LEVEL 1 LIGHTING PLAN
SCALE: 1/4" = 1'-0"



A1 LEVEL 1 POWER PLAN
SCALE: 1/4" = 1'-0"



A3 LEVEL 1 ELECTRICAL DEMOLITION PLAN
SCALE: 1/4" = 1'-0"