

**GENERAL NOTES**

- EXISTING WALLS ARE MEASURED FROM FACE OF WALL (F.O.W.) AND NEW WALLS ARE MEASURED FROM CENTER OF STUD (C.O.S.) TYPICAL, UNLESS OTHERWISE NOTED.
- IT IS THE CONTRACTOR'S RESPONSIBILITY TO REVIEW AND COORDINATE THE WORK OF ALL SUB-CONTRACTORS, TRADES AND SUPPLIERS WITH THE REQUIREMENTS OF THE CONTRACT DOCUMENTS BEFORE COMMENCING CONSTRUCTION, AND TO ASSURE THAT ALL PARTIES ARE AWARE OF ALL REQUIREMENTS, REGARDLESS OF WHERE THE REQUIREMENTS OCCUR IN THE CONTRACT DOCUMENTS, WHICH MIGHT AFFECT THE WORK OF THAT PARTY.
- AS PART OF THE CONTRACTOR'S RESPONSIBILITY TO COORDINATE THE WORK OF ALL SUB-CONTRACTORS, TRADES AND SUPPLIERS, THE CONTRACTOR SHALL ENDEAVOR TO IDENTIFY AND NOTIFY THE ARCHITECT OF ANY CONFLICTS BETWEEN THE WORK OF DIFFERENT PARTIES AT THE EARLIEST POSSIBLE DATE SO AS TO ALLOW REASONABLE AND ADEQUATE TIME FOR THE CONFLICT TO BE RESOLVED WITHOUT DELAYING THE WORK. ALL DEVIATIONS FROM THAT WHICH IS REQUIRED BY THE CONTRACT DOCUMENTS MUST BE APPROVED IN ADVANCE BY THE ARCHITECT.
- THE ARCHITECTURAL DRAWINGS ESTABLISH AND COORDINATE THE FINISHED APPEARANCE AND EXACT LOCATION OF ALL EXPOSED ELEMENTS OF THE WORK OF ALL THE TRADES, INCLUDING THAT WORK WHICH IS ILLUSTRATED PRIMARILY ON DRAWINGS OF OTHER DISCIPLINES. QUANTITIES ARE TO BE PROVIDED AS SHOWN ON DRAWINGS OF OTHER DISCIPLINES BUT LOCATIONS SHOWN ON OTHER DRAWINGS ARE SCHEMATIC, UNLESS OTHERWISE NOTED ON THE ARCHITECTURAL DRAWINGS. THE ARCHITECTURAL DRAWINGS TAKE PRECEDENCE FOR THE FINISHED APPEARANCE AND EXACT LOCATION OF ALL PARTS OF THE WORK.
- EXCEPT WHERE DIRECTED TO PLACE ITEMS OF WORK AT THE APPROXIMATE LOCATION SHOWN, DO NOT SCALE DRAWINGS FOR DIMENSIONAL INFORMATION. ALL ELEMENTS OF THE DRAWINGS MAY NOT BE DRAWN TO EXACT SCALE. ALL DIMENSIONS REQUIRED ARE SHOWN OR MAY BE DERIVED FROM THOSE SHOWN ON THE FLOOR PLANS, DETAIL PLANS, ELEVATIONS, SECTIONS, DETAILS, SCHEDULES AND SPECIFICATIONS. IF DIMENSIONS ARE NOT PRESENT, THE ARCHITECT IS TO BE NOTIFIED SO THAT A CLARIFICATION CAN BE ISSUED.
- CONTRACTOR TO FOLLOW ANSI 117.1-2003 AS REPRESENTED ON SHEET G300 FOR ACCESSIBILITY GUIDELINES. NOTIFY ARCHITECT IF THE DESIGN DRAWINGS CONFLICT WITH THIS SHEET.
- SEE SHEET A500 FOR PARTITION TYPES, & GENERAL NOTES
- SEE SHEET A600 FOR WINDOW AND DOOR TYPES & NOTES
- ALL CHANGES IN FLOOR MATERIAL OCCUR AT CENTERLINE OF DOOR OR FRAMED OPENING UNLESS NOTED OTHERWISE.
- PROVIDE BLOCKING FOR ALL CASEWORK, CABINETS & OPEN SHELVING SHOWN ON THE DRAWINGS OR SUPPLIED BY OTHERS.
- USE THE NORTH ELEVATOR FOR THE DURATION OF THE PROJECT FOR ALL DEMOLITION & CONSTRUCTION USE

**KEY FOR PARTITION TYPES**

DENOTES TYPE OF CONSTRUCTION (SPEC. DIVISION)	WALL
3X0 SERIES	CONCRETE
4X0 SERIES	MASONRY
6X0 SERIES	WOOD STUDS
8X0 SERIES	METAL STUDS
NOMINAL SIZES: V = VARIABLE/MATCH/EXISTING	
EXAMPLE: WALL TYPE 644 IS A 2x4 WOOD STUD WITH 5/8" GYPSUM BOARD ON BOTH SIDES.	2 = 2x2 WOOD STUDS 4 = 2x4 WOOD STUDS / 4" C.M.U. 6 = 2x6 WOOD STUDS / 6" C.M.U. 8 = 2x8 WOOD STUDS / 8" C.M.U. 10 = 2x10 WOOD STUDS / 10" C.M.U. OR CONC. 12 = 2x12 WOOD STUDS / 12" C.M.U. OR CONC.

**RATED WALL LEGEND**

INCIDENTAL USE AREAS	EXAMPLE: WALL TYPE 644-1 IS A ONE HOUR RATED, 2x4 WOOD STUD WALL WITH 5/8" GYPSUM BOARD ON BOTH SIDES, PER ASSEMBLY REQUIREMENTS.
1 HOUR SEPARATION	
2 HOUR SEPARATION	
3 HOUR SEPARATION	
6X0-R SERIES	
FIRE RATING (ONLY WHEN NOTED):	1 = 1 HOUR RATED ASSEMBLY 2 = 2 HOUR RATED ASSEMBLY 3 = 3 HOUR RATED ASSEMBLY

**KEYED NOTES**

- 235.0 EXISTING TIME CLOCK. PROTECT DURING DEMOLITION AND CONSTRUCTION
- 1002.0 WALL MOUNTED GLASS MARKER BOARD, BY OWNER (THROUGH MIDWEST OFFICE FURNITURE). CONTRACTOR TO PROVIDE BLOCKING
- 1222.0 DEMOUNTABLE PARTITIONS. SEE VENDOR DRAWINGS FOR DIMENSIONS AND DETAILS
- 2622.0 CLOCK, ETHERNET POWERED AND CONTROLLED
- 2623.0 POWER POKE-THRU. SEE ELECTRICAL
- 2624.0 DATA POKE-THRU. SEE ELECTRICAL
- 2711.0 WALL MOUNTED VIDEO MONITOR, BY OWNER
- 2711.1 WALL MOUNTED VIDEO MONITOR. SEE ELECTRICAL DRAWINGS

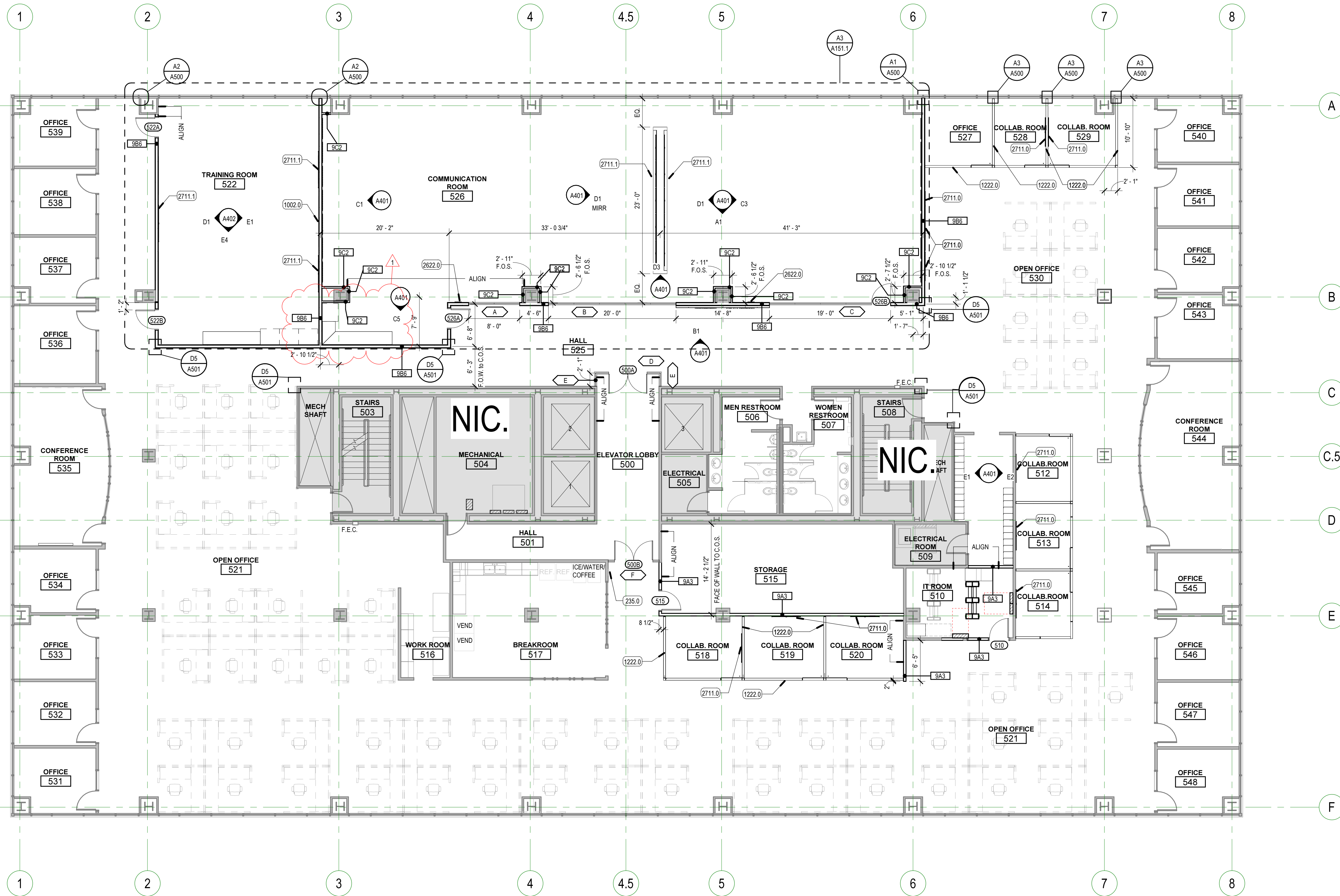


REV	DATE	DESCRIPTION
1	11-02-22	ADDENDUM #1

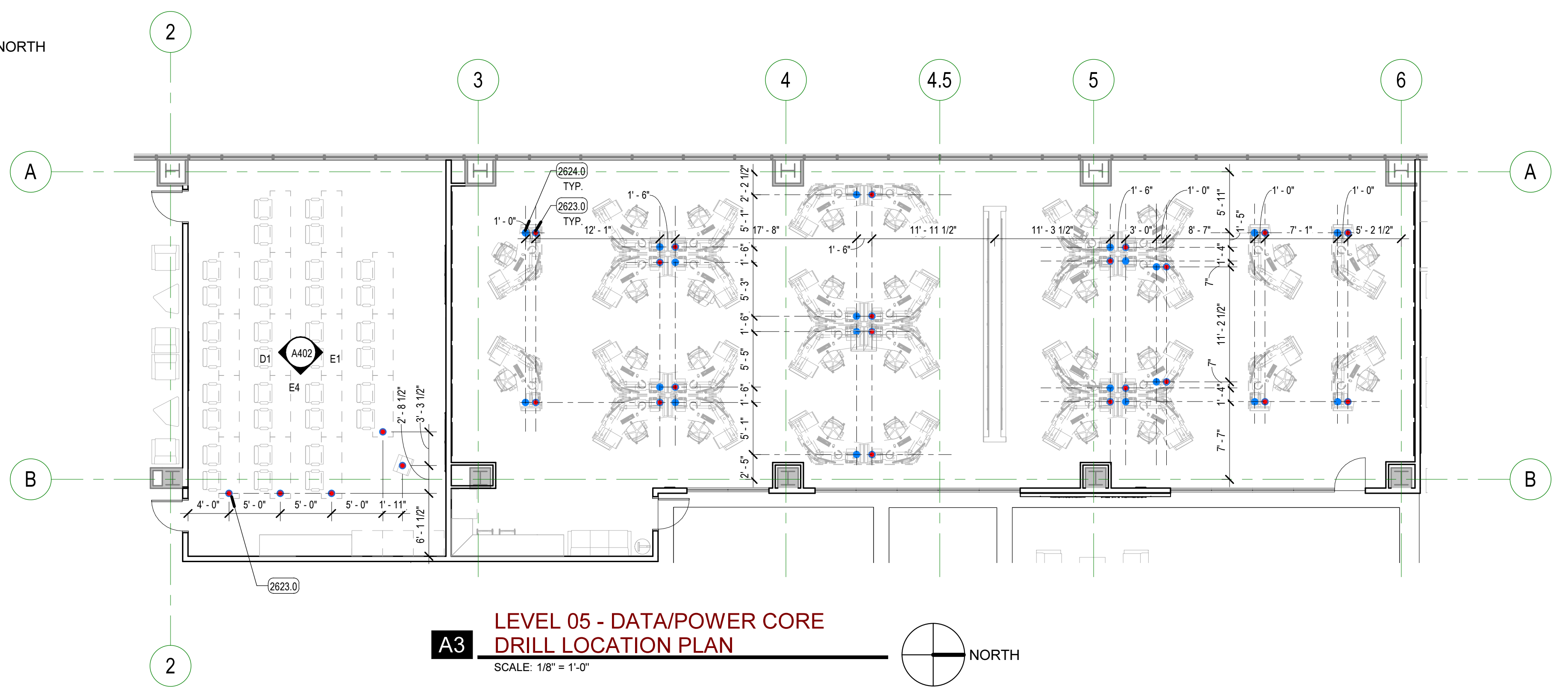
VCBO NUMBER: 22015  
CLIENT NUMBER: 00000  
DATE: 2022.10.25

**CLASSIC AIR - VCT 5TH FLOOR REMODEL**  
INTERMOUNTAIN HEALTHCARE  
VALLEY CENTER TOWER - 5373 SOUTH GREEN STREET  
MURRAY, UTAH  
BID SET

ANNOTATED & DIMENSION PLAN - LEVEL 05  
**A151.1**



**B1** LEVEL 05 - FLOOR PLAN - ANNOTATED & DIMENSION  
SCALE: 1/8" = 1'-0"  
NORTH



**A3** LEVEL 05 - DATA/POWER CORE DRILL LOCATION PLAN  
SCALE: 1/8" = 1'-0"  
NORTH