

Montenegro 2026

From Commitment to Delivery

Working Session IV: Pipeline Development

Pipeline: *Food, Bioeconomy, Natural Resources*

Presenter: Prof dr. Aleksandra Martinovic, Centre of Excellence for Food Safety Risk Assessment, Dean of the FFFSE, UDG

How to read the pipeline: calls roles ➡ participants ➡ activation

1. Most relevant calls

- Immediate activation lines with a realistic 2026 fit
- Strategic build-up lines that require positioning now
- Focus on the calls that can actually mobilize actors after the conference

2. Realistic roles

- Lead / co-lead where Montenegro has system ownership
- Host where strong institutions can attract talent or activity
- Join as partner where participation builds credibility toward future leadership

3. Potential participants

- Universities, research institutes, environmental NGOs and food sector actors
- Ministries, environmental agencies, municipalities, water utilities, farmers and agri-businesses
- Each call should leave this room with a first, named participant pool

Logical grouping of the most relevant calls

Pipeline group	Most relevant calls	Main strengths / benefits	Realistic Montenegro role	Best-placed participants	Indicative timing
Food Science, Safety & Traditional Foods	Cluster 6 Farm to Fork; Cluster 1 nutrition & microbiome; PRIMA (Mediterranean food systems)	Research-driven food safety, authenticity and nutrition. Montenegro's active projects in microbiome, contaminant detection and food traceability provide credible scientific capacity for EU partnerships.	Scientific partner; research data provider; pilot contributor in food science consortia.	Centre of Excellence FoodHub, UDG FPTBHE, food sector SMEs, honey and meat producers, food safety agencies.	Oct–Nov 2026 (Cluster 6); Autumn 2026 (PRIMA)
ERA Capacity Building	WIDERA Twinning (2 proposals submitted); MSCA Staff Exchanges; MSCA Postdoctoral Fellowships; ERA Chairs	Structural EU research integration: staff mobility, joint grant writing, co-supervision and proposal capacity. Critical pathway to equal ERA participation. HAMTRACE (MSCA) already active.	Applicant institution (WIDERA Twinning); host institution or individual applicant (MSCA); partnership co-designer.	Centre of Excellence FoodHub, UDG faculties, individual food science and biotechnology researchers.	Ongoing / Sept 2026 (MSCA PF)
Conservation, Bioeconomy & Direct Access	IPARD III; LIFE Nature & Biodiversity; LIFE Circular Economy; Soil Mission; CIRCBIO (Cluster 6)	Immediate national access (IPARD) and direct EU conservation entry (LIFE, just published). Horizon EU Missions offer pilot site roles for agricultural and coastal systems.	Direct applicant (IPARD); lead or co-applicant (LIFE); pilot site and research partner (Missions, CIRCBIO).	National parks, environmental NGOs, municipalities, water utilities, farmers, agri-businesses.	Apr – Sep 2026 (LIFE, IPARD, Missions)
Transnational Cooperation	INTERREG ADRIAN (FISHIMPACT active); Interreg Euro-MED (GARDEN active); next Interreg cycle	EU research networks for agri-food, fisheries and logistics. Active projects demonstrate track record for stronger future Horizon and WIDERA applications.	Research partner; agri-food cooperation co-lead; active project contributor building toward next-cycle leadership.	UDG FoodHub, coastal municipalities, fisheries and aquaculture actors, agri-food logistics actors.	Ongoing / next cycle

Four strategic tracks: food science excellence (research-driven); ERA integration (WIDERA, MSCA); national access and conservation (LIFE, IPARD, Missions); and transnational cooperation (Interreg).

Immediate activation lines (2026): strongest fit for early mobilisation

Call	Why relevant now / benefits	Realistic role	Best-placed participants	Concrete example	Timeline
PRIMA — Mediterranean Research Partnership	Annual calls for Mediterranean food systems, traditional food valorisation, water-food-agriculture nexus. Montenegro's honey, dry-cured meats and Mediterranean identity are strong assets.	Scientific partner; case-study contributor; co-applicant in food systems consortia.	Centre of Excellence FoodHub, UDG FPTBHE, honey producers, meat processors, agri-food SMEs.	FoodHub and a honey producer co-lead a PRIMA project on Montenegrin honey molecular characterisation, valorisation and EU market access.	Autumn 2026 (annual)
WIDERA Twinning	Structural EU research integration for widening countries. Two proposals already submitted. Links Montenegro's research institutions with leading EU partners for 3-year joint capacity building.	Applicant institution; Twinning coordinator.	Centre of Excellence FoodHub, UDG faculties, food science and biotechnology research groups.	Centre of Excellence Twinning proposal links FoodHub with two leading EU food science and biotechnology institutions for joint research, training and proposal development.	Submitted / next call upcoming
LIFE Nature & Biodiversity	Direct EU environmental programme for habitat restoration, biodiversity and ecological conservation. Montenegro's rich natural heritage is a strong fit.	Protected area manager; research partner; co-applicant with EU conservation body.	National parks (Durmitor, Biogradska Gora, Lake Skadar), environmental NGOs, UoM, MoE.	National Park Durmitor leads a biodiversity monitoring and habitat restoration project co-designed with UoM and a leading EU conservation institution.	Apr–Sep 2026 (URGENT)
MSCA Postdoctoral Fellowships	Individual EU-funded fellowships for experienced researchers. Key route to ERA integration — enables food scientists to train at leading EU institutions and return to build capacity at home.	Host institution (incoming fellows) or sending institution (outgoing fellows).	Centre of Excellence FoodHub, UDG FPTBHE, any institution able to host or supervise a fellow.	A FoodHub researcher applies for an MSCA PF to spend 18 months at a leading EU food safety institute, then returns to build new laboratory capacity at UDG.	Sept 2026
Cluster 6 Farm to Fork (Food Safety & Authenticity)	Horizon Europe research on food systems, food safety, authenticity and supply chain sustainability. Directly aligned with FoodHub's risk assessment and traditional food valorisation work.	Scientific lead or co-applicant; food safety risk assessment and authenticity methods provider.	Centre of Excellence FoodHub, UDG FPTBHE, food producers, food safety authorities, EU consortium partners.	FoodHub leads a Cluster 6 project on authenticity markers and contamination risk in Montenegrin honey and traditional dry-cured meats, with EU food science partners.	Oct–Nov 2026

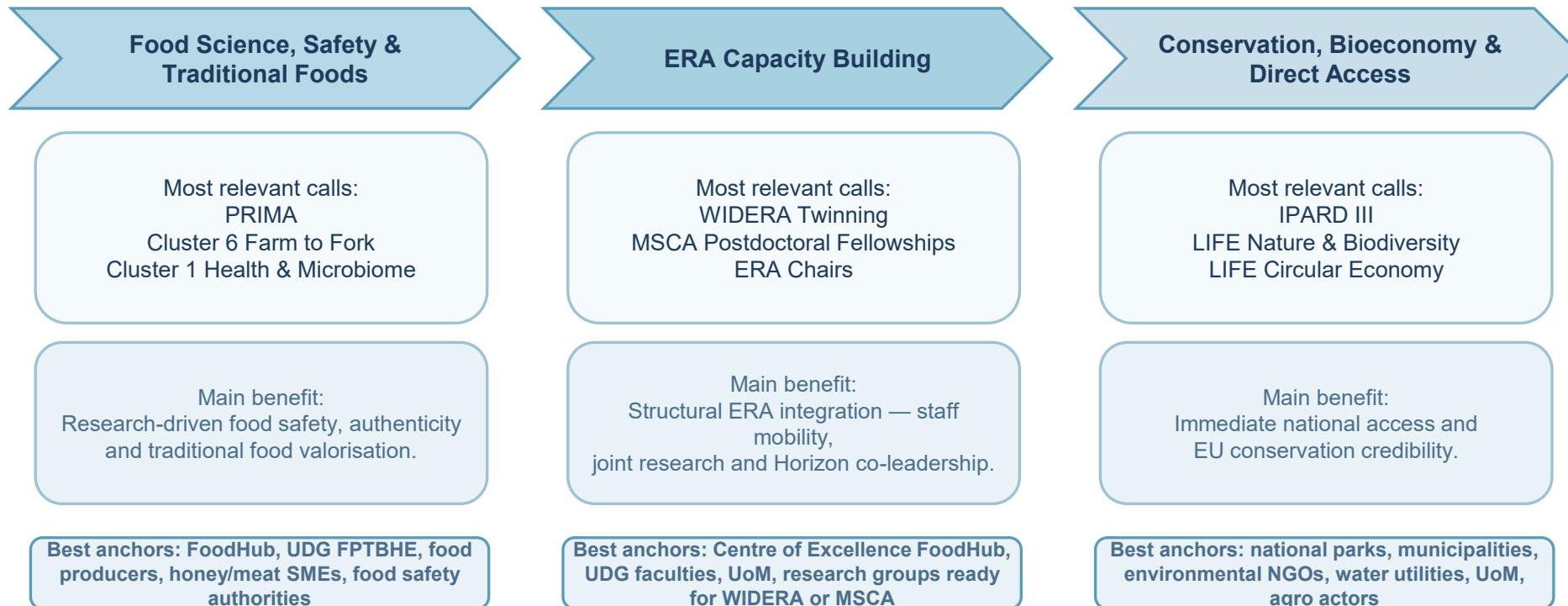
These lines matter because they combine immediate national access (IPARD, LIFE) with near-term Horizon windows where Montenegro can serve as a credible pilot site.

Build-up lines to position now (2026-2027)

Call	Why relevant now / benefits	Realistic role	Best-placed participants	Concrete example	Timeline
Cluster 1 Health — Nutrition, Microbiome & Food Safety	Horizon Europe health and nutrition calls covering microbiome science, food safety risk and personalised nutrition. Directly aligned with FoodHub's active research agenda.	Scientific partner; microbiome / food safety methods provider; co-applicant.	Centre of Excellence FoodHub, UDG FPTBHE, clinical partners, food producers, public health institutes.	FoodHub leads a Cluster 1 project on gut microbiome and dietary patterns in the Montenegrin population, linking food safety risk to personalised nutrition outcomes.	Autumn 2026 (Cluster 1 calls)
EIC Accelerator & Pathfinder (Food Tech Innovation)	European Innovation Council instruments for breakthrough food technology. Active projects (PollenTrace, algal proteins) create a direct pathway to EIC competition readiness.	Innovation applicant or spin-off vehicle; technology developer; EIC ecosystem participant.	Centre of Excellence FoodHub, UDG FPTBHE, food tech start-ups, innovation ecosystem actors, STP Montenegro.	PollenTrace pollen-DNA traceability technology is packaged for an EIC Accelerator application with STP Montenegro as the commercialisation and market access partner.	Ongoing / next EIC cut-off
ERA Chairs (Horizon Europe Widening)	Attracts a leading EU scientist to anchor a research group at a Montenegrin institution for 5 years, building critical mass in food science and boosting ERA integration.	Host institution; ERA Chair holder recruiter; research group builder.	UDG / Centre of Excellence FoodHub as host; UoM as partner; national science fund as co-funder.	UDG applies for an ERA Chair in food safety risk assessment, recruiting a distinguished EU professor to lead FoodHub's research group and anchor future Horizon proposals.	Check current Widening call schedule
2027 Cluster 6 Agri-Food & Food Science packages	2027 Horizon calls will include new agri-food, food system resilience and food science lines. FoodHub's 2026 work creates a direct bridge to co-lead roles in the next cycle.	Build toward consortium co-lead or WP lead; consolidate 2026 research outputs and partnerships.	Centre of Excellence FoodHub, UDG FPTBHE, UoM, food producers, food safety authorities, agro actors.	FoodHub teams that publish PRIMA and Cluster 6 results in 2026 convert these outputs into WP-lead bids in 2027 Cluster 6 agri-food consortia.	18 Nov 2026*
MSCA Doctoral Networks (food science & biotechnology)	EU-funded doctoral training networks in food science, biotechnology and nutrition. FoodHub can join as a partner institution, co-supervising PhD candidates and accessing EU-funded talent.	Partner institution; PhD co-supervisor; secondment host for network fellows.	Centre of Excellence FoodHub, UDG FPTBHE, EU university consortium leads, food industry partners.	FoodHub joins an EU-led MSCA Doctoral Network in food authenticity and safety, co-supervising two PhD candidates and hosting secondments from partner institutions.	Annual (next: 2027)
IPARD III — ongoing national windows (food sector)	IPARD national calls remain open throughout 2026–2027. Food processors, beekeepers, traditional food producers and rural actors should continuously monitor and apply.	Direct applicant; food processing and production investment recipient.	Honey producers, dry-cured meat processors, food SMEs, agri-businesses, rural municipalities, Ministry of Agriculture.	Traditional food producers use IPARD to modernise processing and certification, building the market credibility that underpins FoodHub's valorisation research.	Ongoing nationally

*All Horizon Europe deadlines should be verified on the EU Funding & Tenders Portal. These build-up lines are designed to be positioned now so that FoodHub and partners enter 2027 as experienced consortium actors, not first-time applicants.

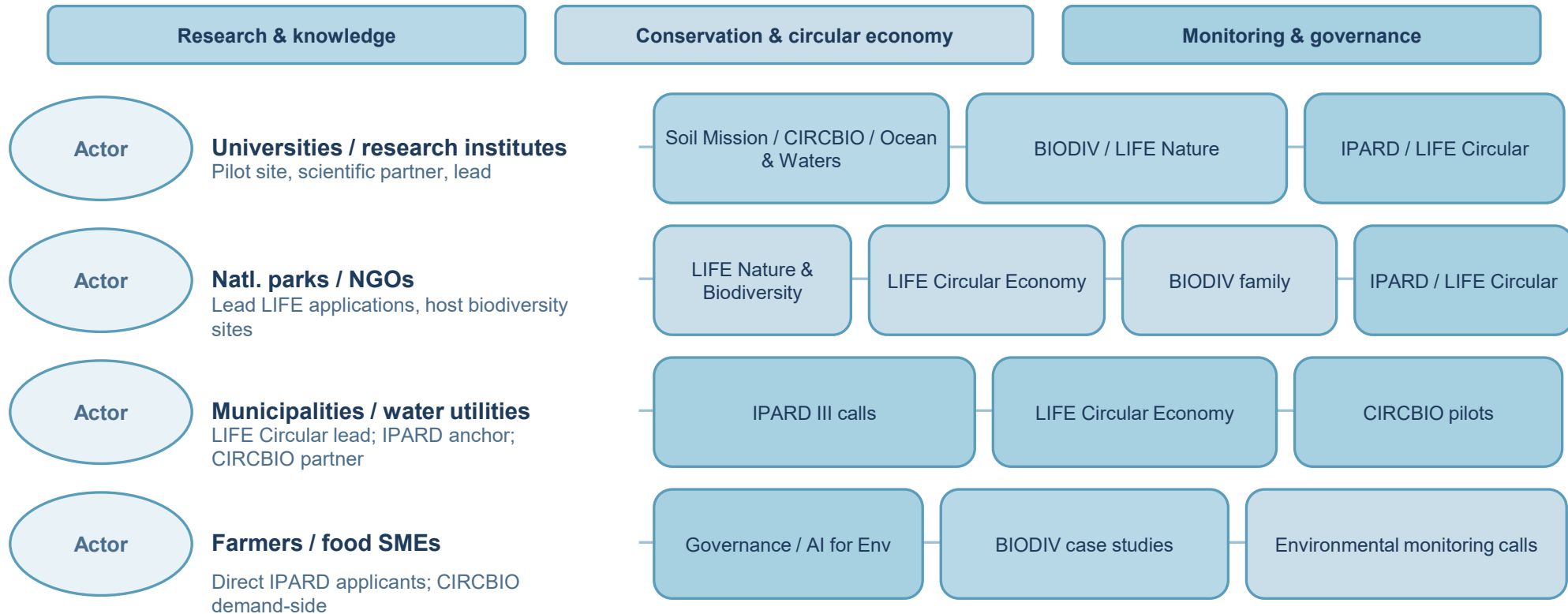
Strengths and benefits: why these call groups matter



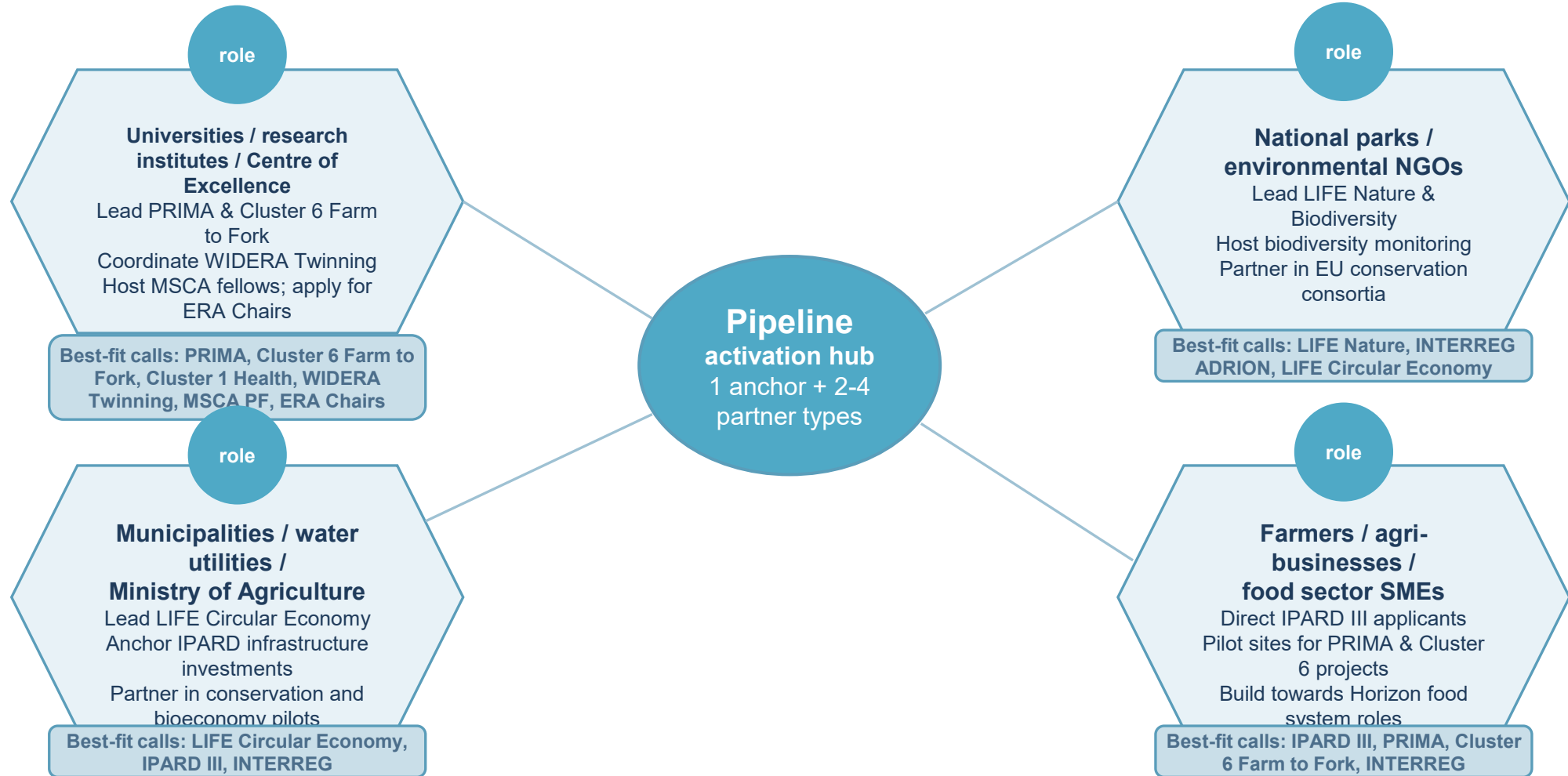
Grouped calls by what they deliver, not just by programme label: entry, capability building, and ecosystem scale-up.

Pipeline logic: PRIMA and Cluster 6 build research depth and publications; WIDERA and MSCA integrate Montenegro into ERA; LIFE and IPARD create national results and conservation credibility.

Which actors are most relevant for which call groups

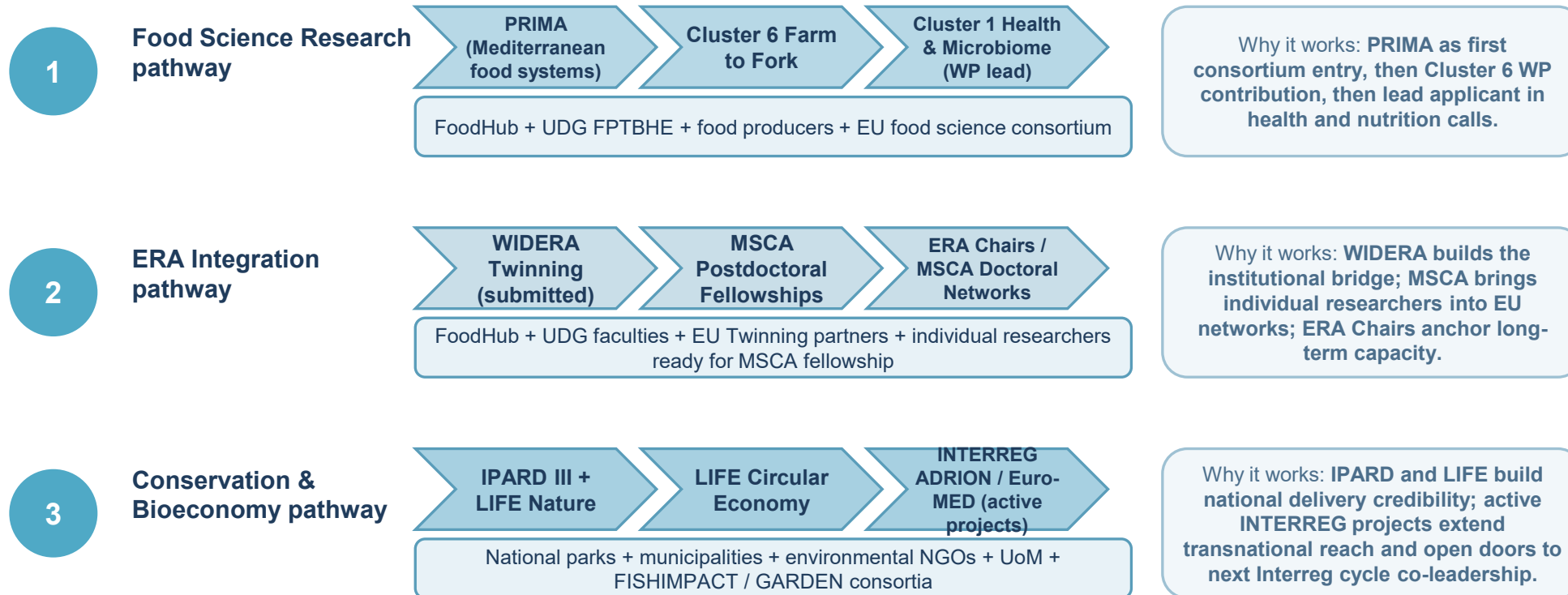


Relevance for different actors: who should lead, host, join or convene



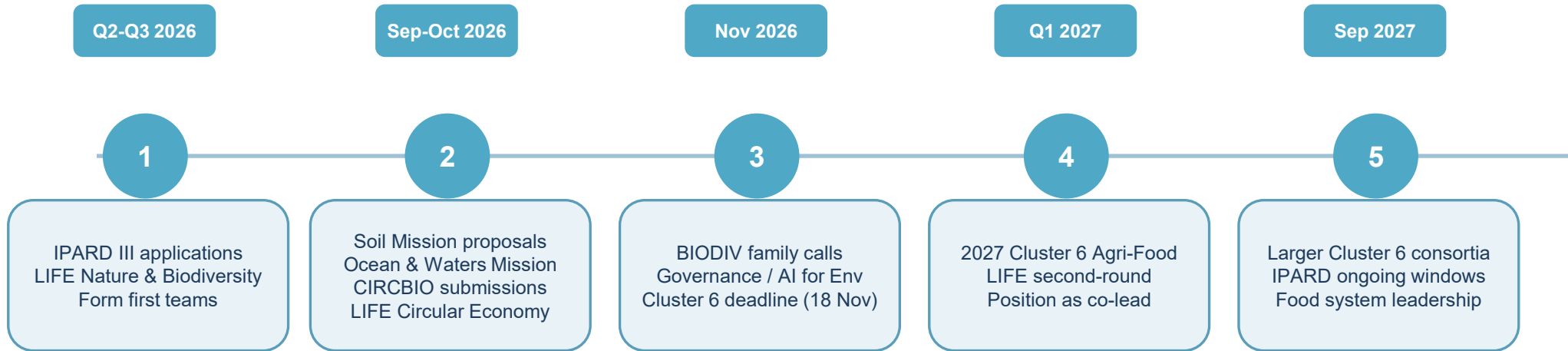
Key message: most calls cut across actor types, but each activation line needs one clear institutional anchor. FoodHub anchors food science and ERA calls. National parks anchor LIFE Nature. Municipalities anchor LIFE Circular. Food producers anchor PRIMA and IPARD.

Selected examples: how calls, roles and actors connect in practice



*These are starter combinations, not fixed consortia; the value is that each example already links a call sequence, a lead actor set and a practical activation logic.

Indicative timeline and the cornerstones this session must secure



Cornerstones to secure in the room today



*The aim is not to predict every step precisely, but to sequence the work so actors know what should happen first, next and later.

Selected examples: how calls, roles and actors connect in practice

Example 1 - IPARD III direct investment

- Call(s): IPARD III national calls
- Actors: Farmers / agri-businesses + food processing SMEs + rural municipalities
- Why it works: direct national funding, no EU consortium required; Montenegro applies independently and builds delivery capacity.

Example 2 - LIFE Nature conservation lead

- Call(s): LIFE Nature & Biodiversity
- Actors: National Park Durmitor or Biogradska Gora + UoM + EU conservation partner
- Why it works: national parks anchor the application; UoM provides science; EU partner satisfies consortium rules.

Example 3 - Soil Mission pilot site

- Call(s): Horizon Europe Soil Mission (22 Sep 2026)
- Actors: UoM Faculty of Agriculture + national parks + rural municipalities
- Why it works: Montenegro's agricultural zones and national parks give it strong pilot site credentials for EU Mission science.

Example 4 - Circular bioeconomy demo

- Call(s): CIRC BIO (Cluster 6 Horizon Europe)
- Actors: Municipality + local food sector SME + EU bioeconomy partner
- Why it works: city-region scale proof-of-concept builds track record and positions Montenegro as co-lead for 2027 Cluster 6.

Today, the goal is not to leave with a longer list of calls, but with a clearer path of action — because the real value of this pipeline will not be measured by how many calls we mention today, but by how many actors we align, mobilise, and move into action tomorrow!