

# GUNSLINGER INTERIORS



*Dream It ~ Build It ~ Live It*



[www.gunslingerinteriors.com](http://www.gunslingerinteriors.com)

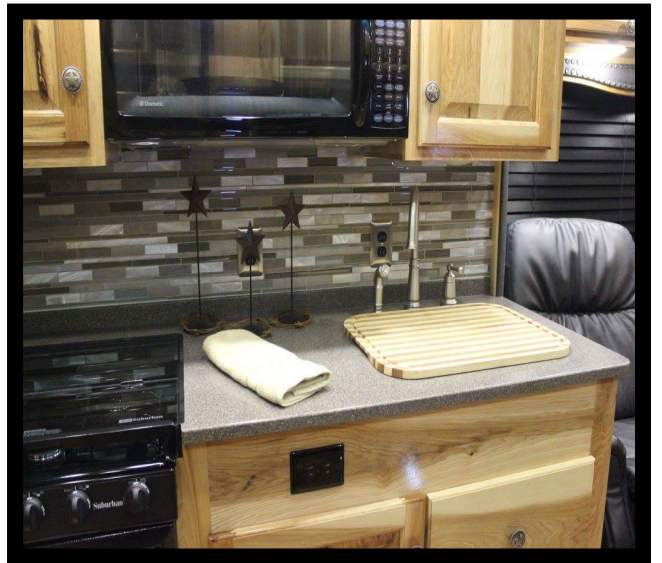
With over 25 years combined experience, Gunslinger Interiors strives to give our customers our very best every time in workmanship, material and customer service.





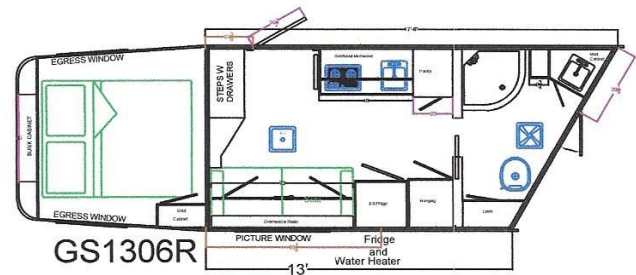
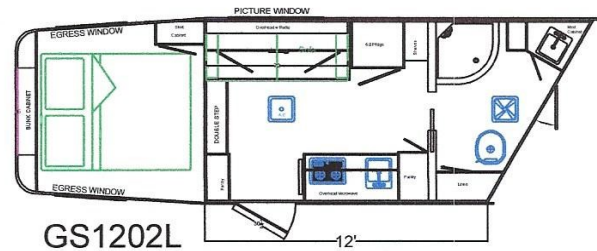
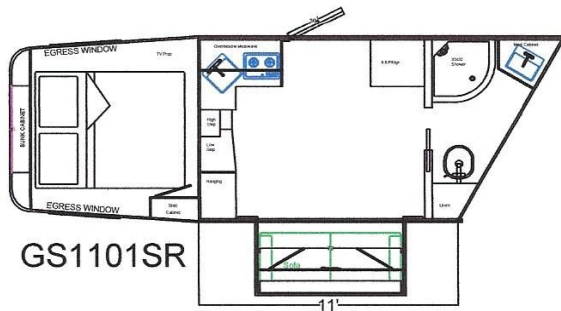
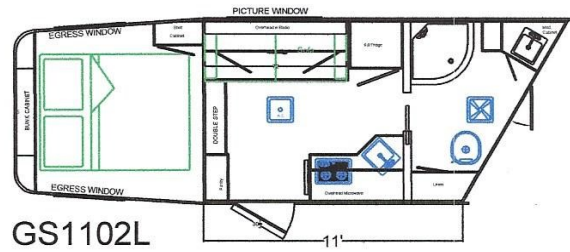
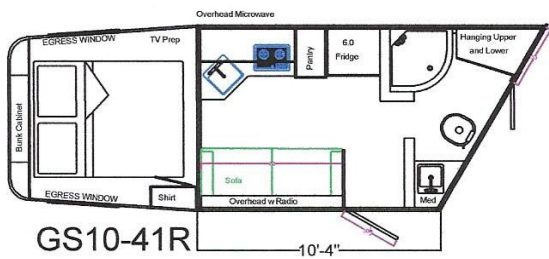
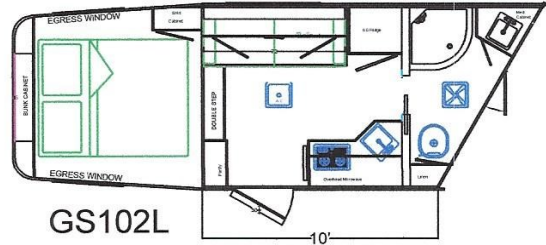
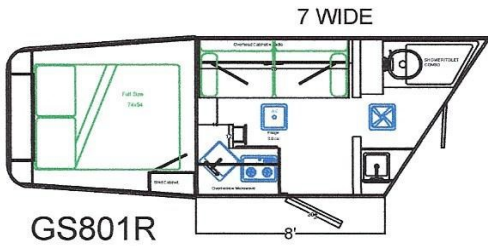
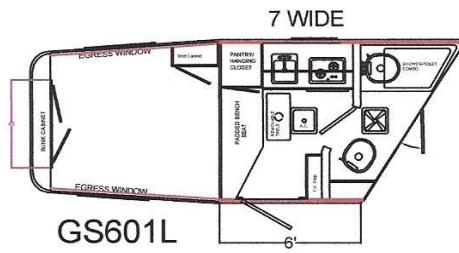
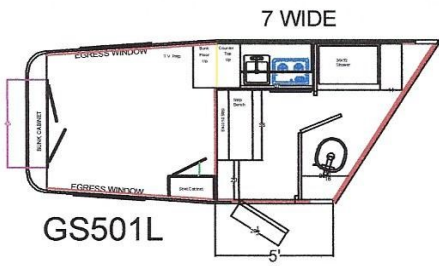
We are happy to offer one of the most diverse lines of interiors available in the industry, which is always evolving. Enjoy the many options that come with choosing Gunslinger Interiors. Customize your home away from home today!





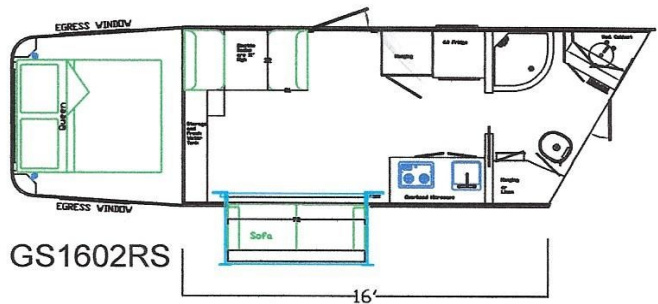
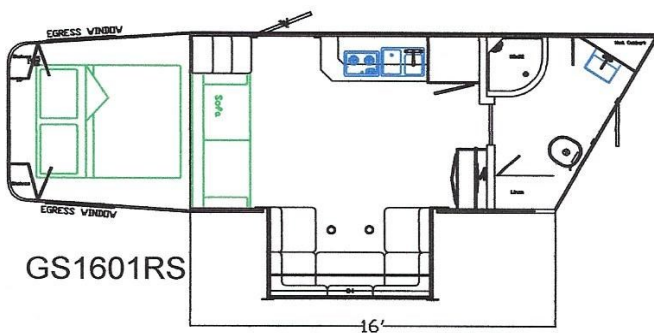
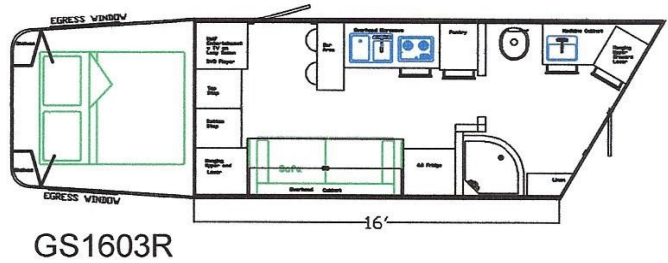
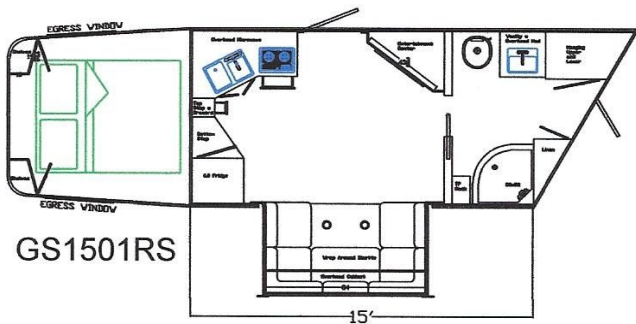
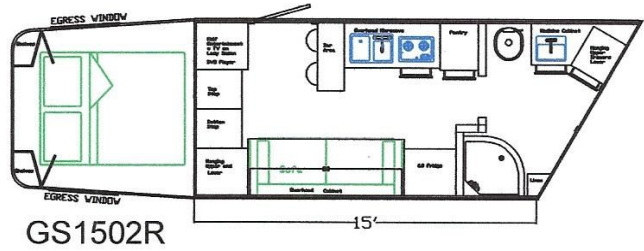
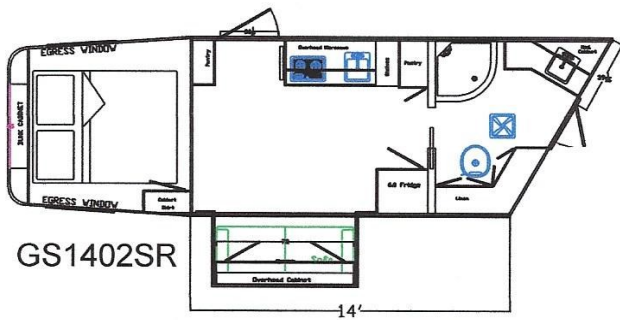
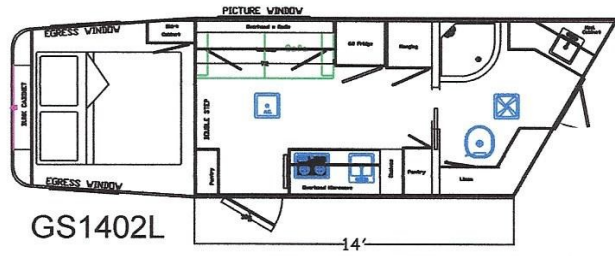
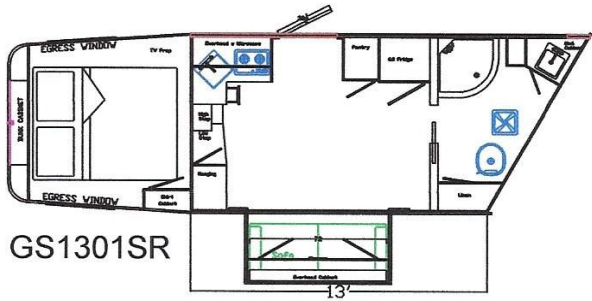
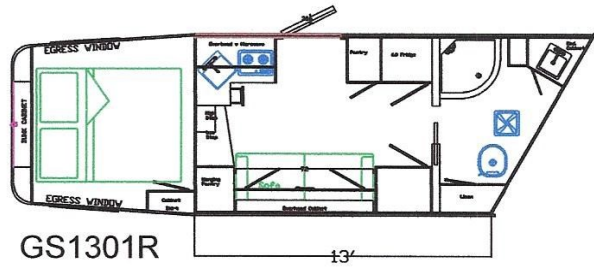
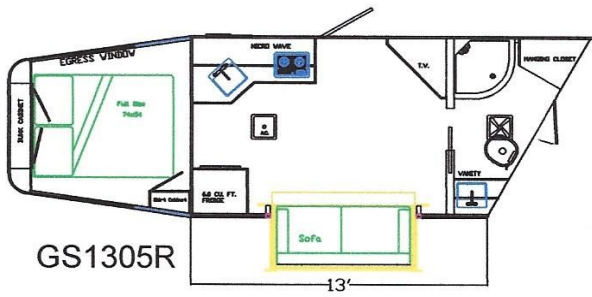


Gunslinger Interiors offers a wide range of options and the flexibility to customize your layout, detail to color, entertainment and more!



Browse some of the layouts available, then contact your local Gunslinger dealer to customize the trailer of your dreams!

[www.adamtrailers.com](http://www.adamtrailers.com)



Browse some of the layouts available, then contact your local Gunslinger dealer to customize the trailer of your dreams!

## **Standard Features:**

Full size bed w/ inner spring mattress  
Carpet in bunk  
Insulated bunk floor  
Reading lights in bunk  
Shirt closet in bunk  
Hanging closet in front bunk  
Hardwood cabinet faces  
Crown molding in living & bunk  
Hardwood trim  
Hardwood door casings  
Solid wood, raised panel cabinet doors  
Solid wood window rings  
Laminate countertops & tabletops  
Solid wood edge on countertops & tabletops  
Sofa or Dinette (per print)  
Cabinets above sofa or dinette  
Single kitchen sink  
Nickel color cabinet hardware  
.9 cubic foot microwave  
Lighted/vented range hood  
2 Burner cook top w/ lid  
3 Cubic foot refrigerator (6.0 for 10' and up)  
Raised panel refrigerator door (6.0 and up)  
Flip-up countertop (per print)  
Nickel color towel ring & paper holder  
White 32 x 32 Shower w/ glass door  
Nickel color faucet  
Sink w/ vanity  
Marine foot flush toilet- white  
Medicine cabinet w/ mirror  
Powered roof vent in bathroom  
Panel walls  
Paneled ceiling  
3/4" subfloor  
Standard Linoleum floor  
Pleated shades on all windows  
Wood valence on all windows  
Camper door snap curtain  
AM/FM/CD stereo w/ inside speakers  
Outside speakers  
Smoke detector  
CO2 & LP detector  
Fire extinguisher

110V Inside receptacle  
TV Prep including antenna & outside cable hook-up  
12V Outlet  
Hitch hook-up light  
Lighted grab handle  
Exterior porch light  
25' Power cord  
Powered awning  
City/Country water hook-up  
30 Gal. Black water tank  
30 Gal. Grey water tank  
25-50 Gal. fresh water tank (per print)  
6 Gal. gas water heater  
Outside water spigot  
Sewer hose & holder  
Tank Monitor System  
On demand pressure water system  
Dual deep cycle marine batteries w/ box  
Dual 20# LPG Tanks w/ regulator  
Master On/Off switch  
60-90 amp power converter (per print)  
120V exterior receptacle  
13,500 BTU Ducted AC & Digital control thermostat (10' and up)  
16,000 BTU furnace (ducted 10' and up)  
TRA certified



**Manufactured by:**

**Dalton Enterprises, Inc.**

**206 Gienow Road**

**Rural Retreat, VA 24368**

**Phone: 276.686.9178**

**Fax: 276.686.9100**

**Email: [info@gunslingerinteriors.com](mailto:info@gunslingerinteriors.com)**

**[www.gunslingerinteriors.com](http://www.gunslingerinteriors.com)**