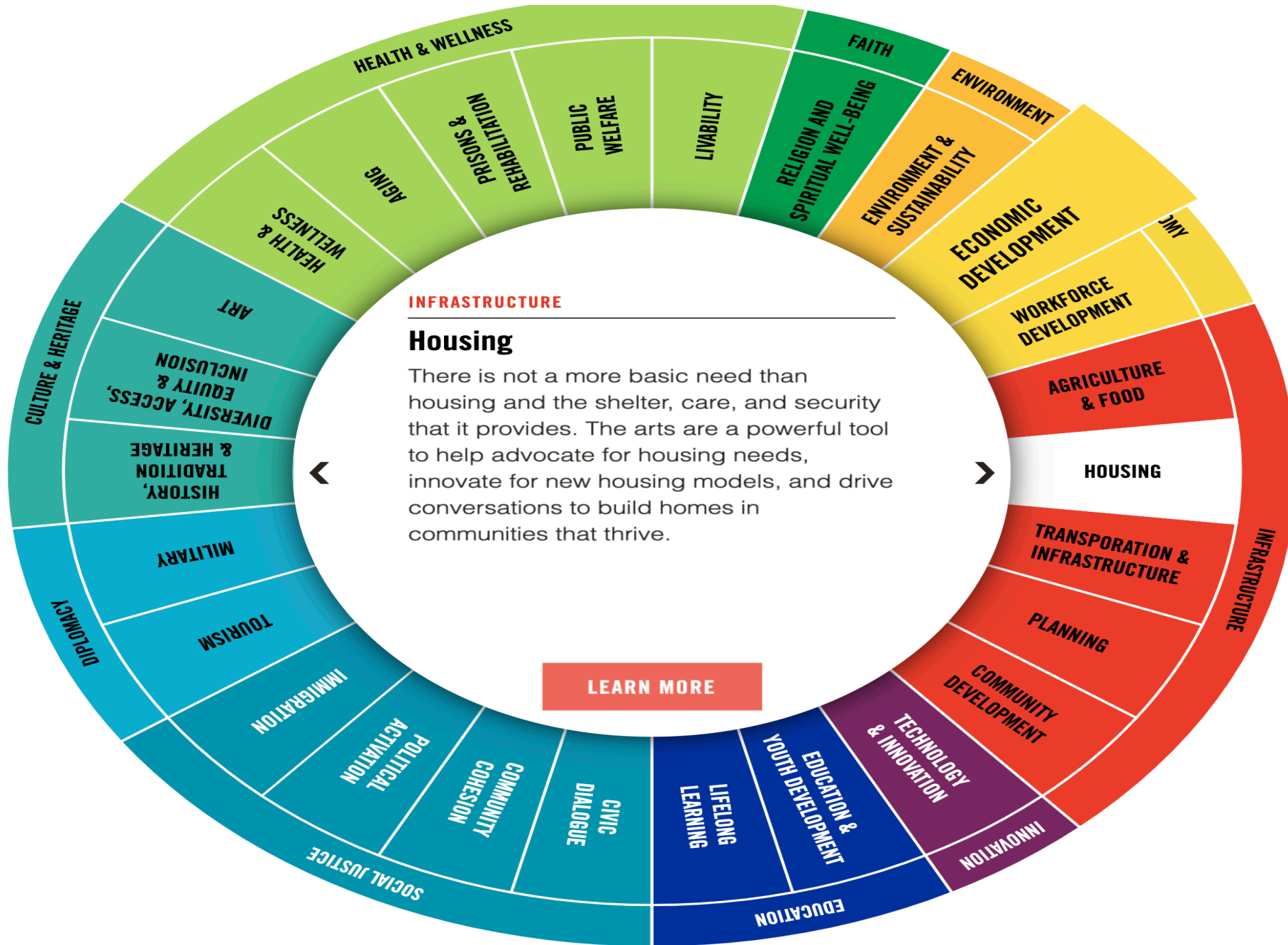


HEALING BALTIMORE

Claudia Wilson Randall

 COMMUNITY DEVELOPMENT
NETWORK OF MARYLAND



**Americans for
the Arts
Social Impact.**

<https://www.americansforthearts.org/social-impact>

Why should we invest in **collaboration** between Community Development & Health in Baltimore?

Understanding the Social Determinants of Health

Social Determinants of Health Explained

<https://www.youtube.com/watch?v=8PH4JYfF4Ns>

Video from Colorado

<https://www.youtube.com/watch?v=I7iSYi3ziTI>

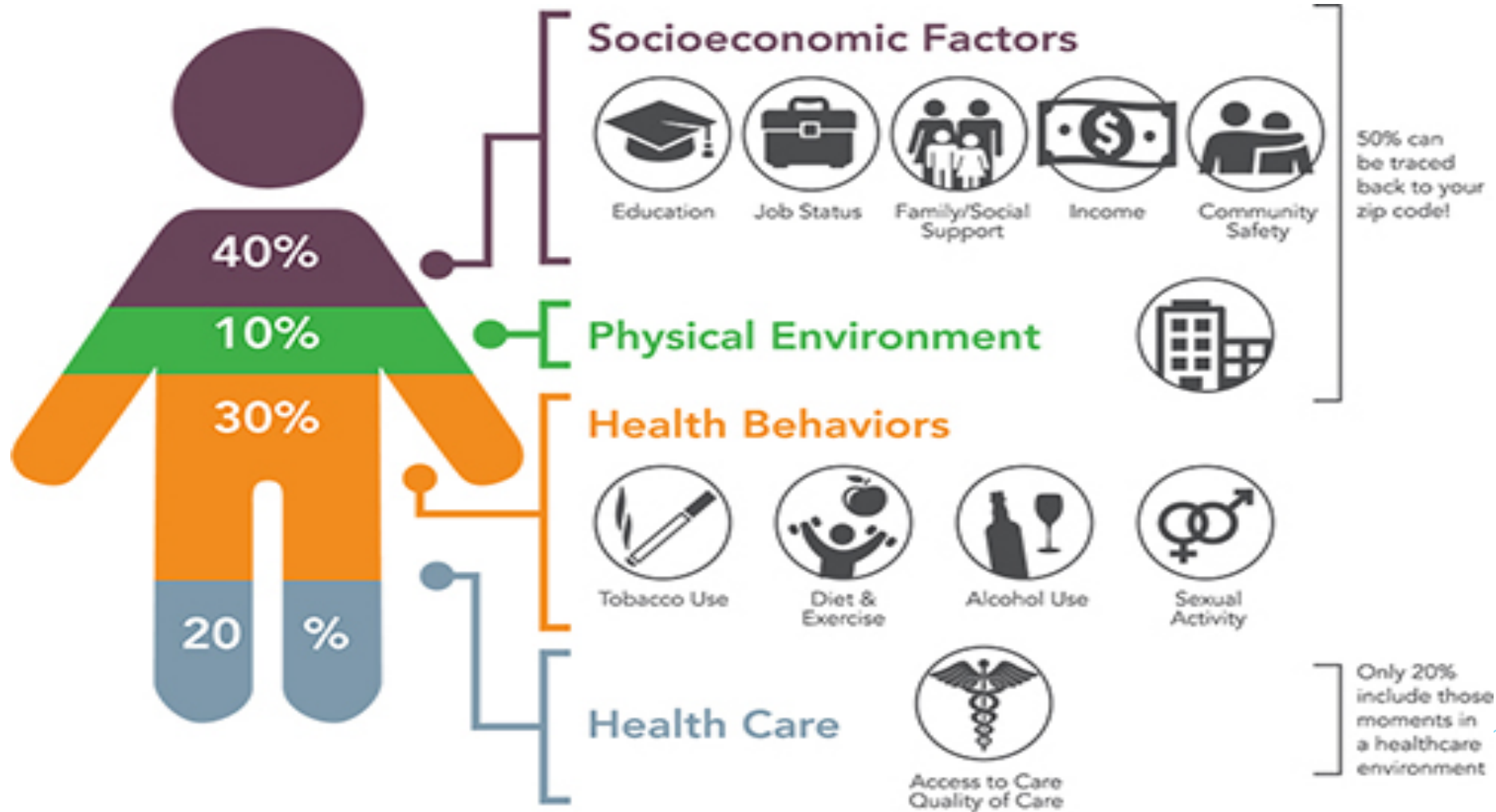
Dr. Camara Jones, Public Health Administration

<https://www.urban.org/policy-centers/cross-center-initiatives/social-determinants-health/projects/dr-camara-jones-explains-cliff-good-health>

Why?

- ▶ Maryland All Payer System - Affordable Care Act
- ▶ The importance of the Social Determinants of Health
- ▶ National Community Development field coming together around SDOH
Democracy Collaborative, Enterprise, LISC, NeighborWorks, PolicyLink
- ▶ Bring the power and influence of the healthcare industry to the affordable housing and community development field.
- ▶ Align resources - huge expenditures - little change in racial disparities, reduction in poverty and inequality.
- ▶ Only 20% of health is determined by the Healthcare system. Healthcare has acknowledged the need to address “upstream” factors.

Socioeconomic Factors Account for 40% of health



Why? Building on existing momentum

- ▶ Baltimore Integration Project
- ▶ Work of Community Hospitals
- ▶ CDN & NDCC anchor institution work
- ▶ Success with Partners here today.
- ▶ Build capacity of underfunded community development sector to take on bigger higher impact projects.
- ▶ Develop a more equitable approach to work in Baltimore
- ▶ Cultivate more transformative and fewer transactional programs

Potential benefits for many systems

Lower poverty and increase opportunity rate
(Close link between poverty and health)

The population over 60 will double by 2050.

Improved community can save lives, reduce disease,
increase opportunity and achievement,
and reduce healthcare costs.

What needs to be done to further this work?

1. Address the needs and aspirations of Baltimore residents.
2. Build knowledge and trust among Baltimore healthcare and community development leaders;
3. Identify opportunities to address social determinants of health in through cross-sector collaboration and investment; and

What needs to be done to further this work?

4. Develop a more strategic and accelerated approach to launching initiatives between healthcare and community development in Baltimore.,
5. Add sustainability framework,
6. Connect art and creativity to this work in order to help sectors get out of their siloed approach and give hope to residents.

How do we syndicate, replicate and focus on areas and populations who need this work most?

- ▶ Geography
- ▶ Racial Disparity Framework
- ▶ Redlining & Real Estate
- ▶ Leadership
- ▶ Community Participation

Areas in worst health and with the shortest life expectancy

What do we hope to achieve today

- ▶ Raise up the work that is already taking place,
- ▶ Understand what organizations hope to achieve at the intersection of Health and Community Development,
- ▶ Understand what information or training would support support the work, and
- ▶ Find out who is the appetite for the Community Benefits Agreement process.