

BAUM K20B KNIFE FOLDER



The Baum K20 is A Heavy Duty knife Folder that can be adapted to a number of post press needs.

This includes:

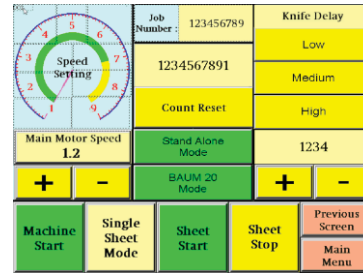
- Floor-model Buckle folders
- Table Top Folders
- Bookletmakers
- Saddlestitchers

Some of the features of the New K20B are the same as on the previous model including:

- Heavy Duty Construction
- Independent Mobile unit with heavy duty casters
- Independent Drive
- 1.75" diameter combination urethane/steel fold rolls
- Reversible belt allows choice of left hand or right hand delivery
- Knife can operate from top down or bottom up
- Synchronized maintenance free drive with sealed ball bearings
- Can fold signature sizes from 4.72" x3.94" up to 20.47" x 14.17"

FEATURES ONLY ON THE K20B

Touch Screen Control Panel

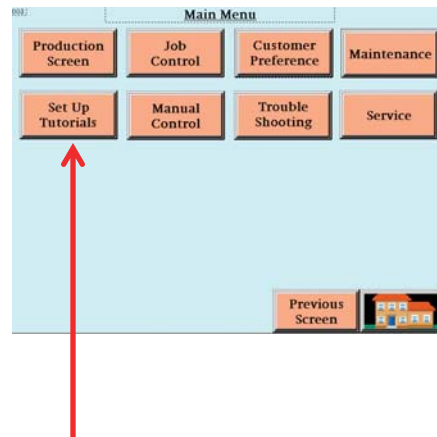


HMI (Human Machine Interface) 7-inch diagonal touch screen control with color pictographs that provide easy access to multiple machine functions and monitoring.

NEW Baum ifold Tutorial

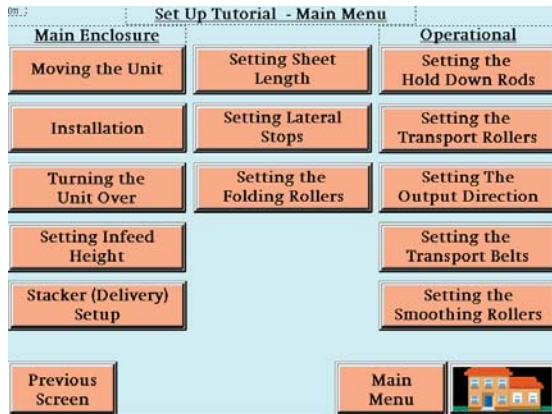
This unique and exclusive feature was not available on the previous model K20.

Tutorials are available on various topics using the touch screen

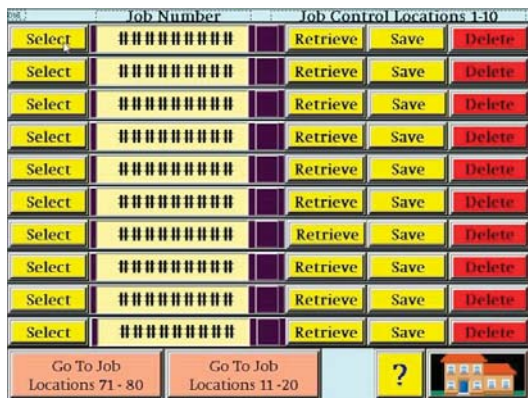


The Set up Tutorials provide you with the necessary information to set up and operate the K20.

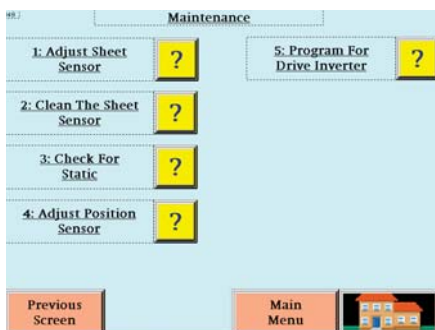
The Set up Tutorials menu allows you to select the necessary information to set up and operate the K20. You will find detailed information containing pictures and drawings showing each step.



You also have the ability to save the speed and knife delay information for up to 80 jobs using the job control screen



The Maintenance Screen gives you the information about maintaining and troubleshooting the K20.



The versatile K20 folding unit can perform several folding applications such as:

- Last fold for bulky folds that a buckle folder cannot produce
- Folding booklets in half to meet postal regulations for reduced cost
- Double gatefolding
- Newspaper inserts
- Instruction sheets with multiple languages requiring many pages

BAUM K20 KNIFE FOLDER SPECIFICATIONS

Maximum signature size 20.47" x 14.17"
[52x36cm]

Minimum signature size 4.72" x 3.94" [12x10cm]

Maximum product final thickness 0.23 to 0.31 inches [6-8mm]

Folding speed 1969-5905 ipm [50-150 m/min]

Infeed height 20.27 to 36 inches [51.5 to 91.5cm]
Motor output 0.6hp [0.45kw]

Electrical Info

Electrical 220/1/60/50

Operating amperage 2.7

Fuse protection 15 amps



AUTOMATED EQUIPMENT SERVICE, INC.

MAIL PROCESSING SYSTEMS

(845) 452-2100 (518) 459-4545
(914) 478-2100 (607) 733-2108

info@AESMailPro.com



1660 Campbell Rd
Sidney, Ohio 45365