

7104 Series

HIGH VOLUME MODULAR INSERTER SOLUTION



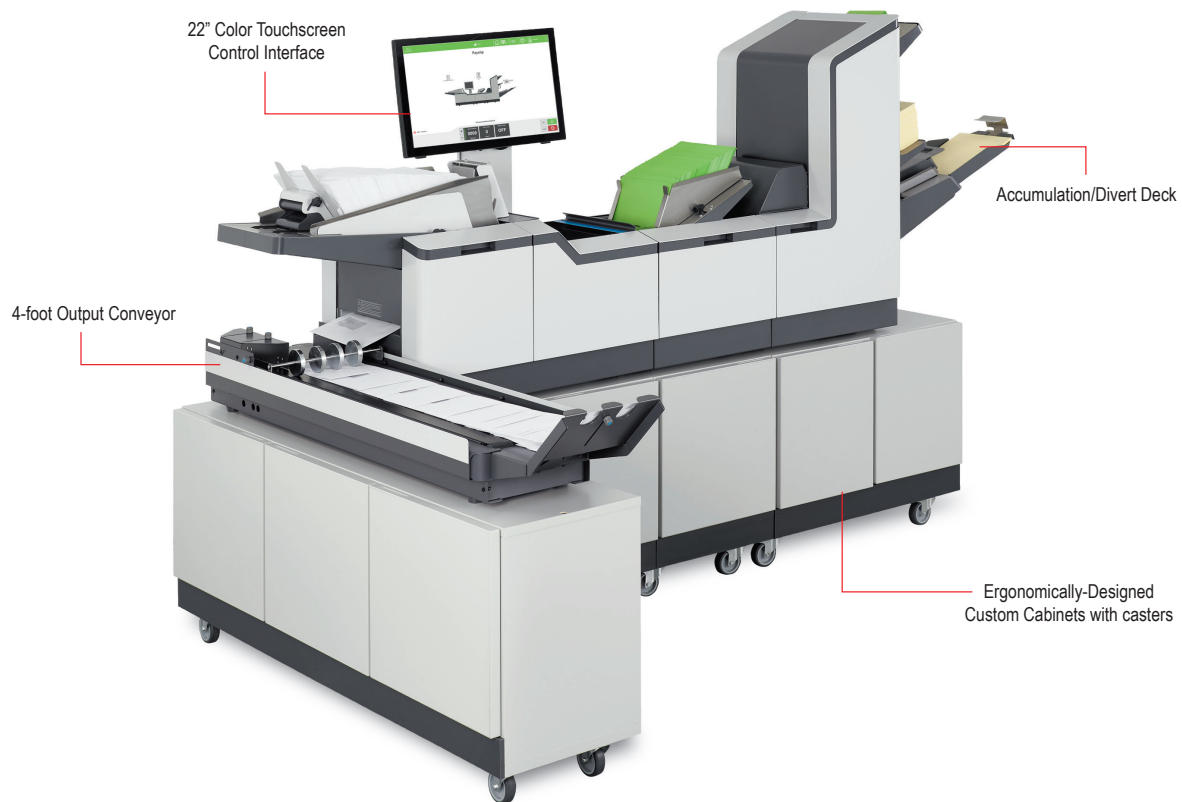
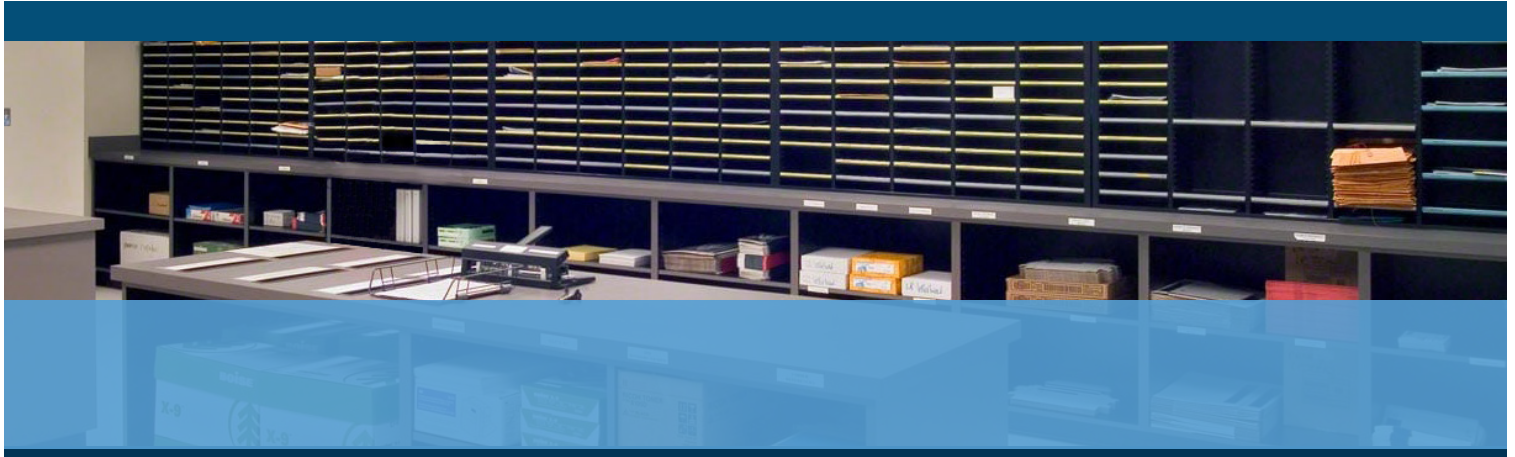
AUTOMATED EQUIPMENT SERVICE, INC.

MAIL PROCESSING SYSTEMS

(845) 452-2100 (518) 459-4545

(914) 478-2100 (607) 733-2108

info@AESMailPro.com



- Modular design
- Up to 8 modules with up to 17 feeders
- 22" color touchscreen
- Processes up to 4,500 envelopes/hour
- Unlimited programmable jobs

FORMAX[®]

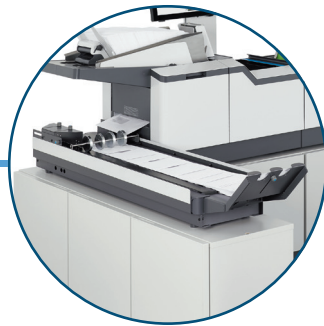
www.formax.com

Local Dealer:

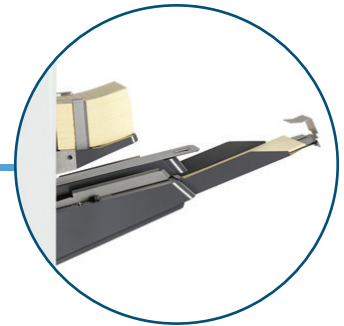
The **7104 Series** is available in 3 configurations, with an optional **Productivity Package**. Its modular design offers up to **eight modules** with up to **17 feed stations**, **high-capacity feeders**, and a **standard capacity of up to 1,500 sheets**. Feeder combinations include: one 1,000-sheet feeder, one 500-sheet and one 1,000-sheet feeder, or three 500-sheet feeders. The 7104 Series processes **up to 4,500* envelopes per hour** and **folds up to 8 sheets at a time**. Standard features include a **22" color touchscreen**, **unlimited programmable jobs**, an **accumulator/divert deck**, **custom cabinets on casters**, and a **high-capacity envelope feeder**, and **4-foot output conveyor**. A variety of **intelligence features, modules, and output options** are also available, in addition to the Productivity Package.



22" Intuitive Color Touchscreen
Graphical interface provides quick and easy setup



High-Capacity Output Conveyor
Holds up to 500 filled envelopes, can be used straight-on or at 90°



Divert Station
Sensors redirect double documents and incomplete sets without interruption



High-Capacity Envelope Feeder
Holds up to 800 envelopes with on-the-fly reloading for continuous operation



Optional Full-Page Scanner
Reads a variety of codes, printed in any location, on both sides on the page

STANDARD FEATURES

- Modular design
- 22" color touchscreen
- Quick and easy setup
- Unlimited programmable jobs
- Inserts up to 6mm thick
- Up to 4,500 envelopes per hour
- Folds up to 8 sheets at a time
- C, half, Z, double parallel, no fold
- High-capacity envelope feeder
- Double document detection
- Divert tray
- Automatic document measurement
- Bottom-feeding for easy reloading
- Glossy paper capability
- 10-liter sealing solution reservoir
- Custom cabinets
- High-capacity output conveyor
- Daily mail mode

OPTIONS

- Single or multi-code reading licenses
- 2-sided code reading
- Productivity package
- Insert feeders
- Intelligent feeders
- Feeder folders
- BRE feeder
- Envelope sorter/diverter
- Catch tray
- Sorter catch tray

* Speeds with optional Productivity Package. Paper & envelope specifications may vary. All media must be tested.

SPECIFICATIONS

Speed (1-sheet letter fold)	Up to 4,500/5,500* per hour
Accumulation Speed (multi)	Up to 6,900/9,400* per hour
Feeders	Up to 17
Tower Feeder Capacity	Standard 1F: one 1,000-sheet feeder Standard 2F: one 500 and one 1,000-sheet feeder Standard 3: three 500-sheet feeders
Envelope Feeder Capacity	Up to 800
Duty Cycle	Up to 180,000 pieces per month
Document Size	5.5" W x 5.5"L to 9" W x 16" L (140 x 140mm to 229 x 406mm)
Envelope Size	#10, 6" x 9" (152 x 229mm)
Insert/Booklet Thickness	Up to 5/32" (4mm)
Dimensions (tower feeder w/insert base)	76.5" L x 36" H x 18.5" D (194 x 91 x 47cm)
Weight (tower w/insert)	400 lbs. (181kg)
Voltage	115V, 50/60 Hz, 10Amp
Safety Certifications	UL, CE, FCC certified