

# PoliControl

Analytical Instruments



**Reagents - Standards - Solutions**

**Laboratory - Field - Online**

# Easy calibration with accurate results

IP 67

Rugged design



Portable Colorimeters and turbidimeters are suitable for operation under any condition/location. Manufactured under strict QC processes, units are field and customer proven, simple to operate and affordable.

Multidetector optical system compensates for color in the sample, light fluctuation and stray light, enabling precise readings even in field applications.

Ideal for regulatory water or wastewater monitoring, Industrial applications and environmental analysis.

Easy and simple USB data transfer, no special module or cable required, just plug the USB to Hyperterminal and download the CSV file, optional Bluetooth wireless data transfer is available.

Features a new level of robustness with the Full IP67 ultra-tough housing



## Colorimeter / Turbidimeter



### Toughest in the market!

Housing is designed to meet laboratory and field intensive work demands. Exclusive IP-67 rating even with lid is open, instruments also floats completely when in water.

These exclusive features also ensure longevity to the units as it protects electronics and sensors against corrosive gases, humidity and accidental spills in the sample chamber.

Optional easy wireless communication emulates a serial port over a Bluetooth connection.

Parameter	Range	Accuracy	Method	Light Source
Chlorine	0.00 – 5.00 mg/L Cl <sub>2</sub> 0.00 – 10.0 mg/L Cl <sub>2</sub>	0.01 mg/L	SMEWW 4500-Cl G	LED
Chlorine / pH	0.00 – 5.00 mg/L Cl <sub>2</sub> 0.00 – 10.0 mg/L Cl <sub>2</sub> 6.0 – 8.5 (pH)	0.01 mg/L (Cl <sub>2</sub> ) 0.1 (pH)	SMEWW 4500-Cl G	LED
Fluoride	0.00 – 2.00 mg/L F <sup>-</sup>	0.01 mg/L	SMEWW 4500-F <sup>-</sup>	LED
Color	0 a 500 UC	0.1 UC / 1 UC	SMEWW 2120 E Tristimulus	LED
COD	0 – 1500 mg/L	1 mg/L	SMEWW 5520 D	LED
Turbidimeter WL	0 – 1000 NTU	0.01 NTU	US-EPA 180.1 SMEWW 2130 B	Tungsten Lamp
Turbidimeter IR	0 – 1000 NTU	0.01 NTU	ISO 7027	IR LED
Color Multi	Chlorine: 0.00 – 5.00 mg/L Cl <sub>2</sub> 0.00 – 10.0 mg/L Cl <sub>2</sub>	0.01 / 0.1 mg/L 0.1 (pH)	SMEWW 4500-Cl G	LED
	Aluminun: 0.00 – 1.00 mg/L Al <sup>+3</sup>		SMEWW 3500-Al B	
	Chrome: 0.00 – 1.00 mg/L Cr <sup>+6</sup>		SMEWW 3500-Cr D	
	Phenol: 0.00 – 5.00 mg/L C <sub>6</sub> H <sub>5</sub> OH		SMEWW 5530 D	
	Iron: 0.00 – 4.00 mg/L Fe <sup>+2</sup>		SMEWW 3500-Fe B	
	Manganese: 0.00 – 1.00 mg/L Mn <sup>+2</sup>		Formaloxime	
	Molybdenun: 0.0 – 25.0 mg/L MoO <sub>4</sub> <sup>2-</sup>		Molybdate	
	Nitrate: 0.00 – 6.00 mg/L NO <sub>3</sub> <sup>-</sup>		SMEWW 4500-NO <sub>3</sub> <sup>-</sup> H	
	Nitrite: 0.00 – 1.00 mg/L NO <sub>2</sub> <sup>-</sup>		NO <sub>2</sub> <sup>-</sup>	
	pH: 6.0 – 8.5		pH: phenol red	

## Programmable Jar Test

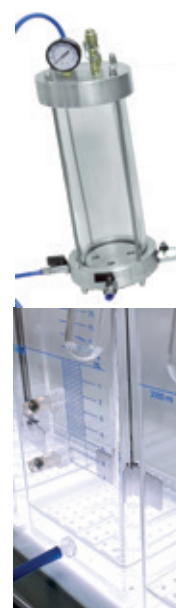


Six or three paddle programmable models delivers a high level of precision by utilizing state of the art motor and programming. Software allows for four operator-programmable memory banks with up to 20 steps each.

Banks may be programmed with paddle speeds from 5 to 300 rpm in 1-rpm increments, or 10 to 600 RPM.

Constructed on a powder-coated steel chassis, features an LED floc illuminator built into the base, and stainless steel depth-adjustable paddles.

Paddles	Stainless steel 300 series
Display	LCD
Unit	RPM - G/s
Speed	Programmable up to 300 or 600 RPM
Jars	3 or 6
Display	LCD
Gradient	10 to 2000 $s^{-1}$
Controller	Programmable de 0 to 120 minutes
Alarm	Test finish with auto-off
Jars	Squared acrylic
Sample collector	Bar system for simultaneous collection
Chemical distributor	Bar system for simultaneous distribution
Base illumination	LED lights



Optional: Saturation chamber and jars for flotation test.

## MPN Reader

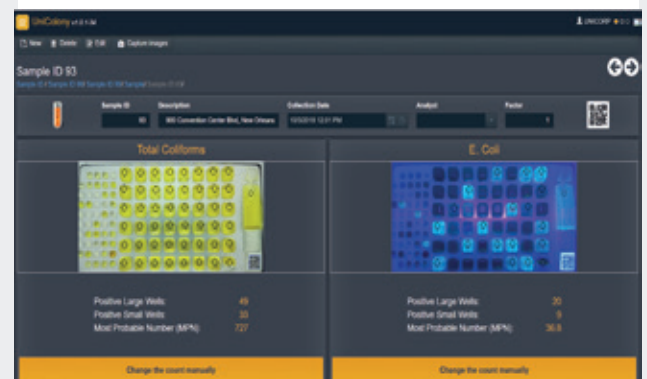


Easy 3 steps procedure for safe, accurate and precise Coliforms/E.coli readings.

**1- Insert incubated tray.**

**2- Close the lid.**

**3 -Click to capture an image.**



Coliforms and E.coli quantitative analysis performed by MPN (most probable number) tray method is widely used as it's a fast and easy method for this important determination. However, the reading and quantification procedure is not precise (visual comparison), not accurate, not economical, not traceable and unsafe for users.

The MPN reader acquires images of trays under UV and white light, performs image detection and calculates MPN.

The system is the first ever to help users with the tray reading routine.

-Eliminates Manual processes and delivers reliable results.

-From 5 minutes to 7 seconds per test

-From uncontrolled variability to 100% accurate results.

-Assurance to the water utility that they are providing or discharging safe water.

-Cost reduction in the form of reduced labor, resampling and bacteria count error, and reliable decision making regarding water quality.

-Improved user safety as exposure to UV light causes non-melanoma skin cancers and/or Blindness (WHO 2003).

Tray	96 wells
Data Stored	Sampling date / User / MPN reading / Sample Number / Sample Name / Dilution Factor
Method	ONPG/MUG
Camera	Color HD
User UV Exposure	None
Analysis time	7 Seconds
Count	Automatic with manual control
Illumination	White LED / UV 356
Power Supply	110V / 220V
Data Protection	User-defined password
Data Storage	Cloud / Local
Sample automation	QR Code
Software	Unicorp
Output	2 USB - Ethernet
Tablet/PC connection	WIFI
Data	.CSV

No confirmation Required

18 to 24 hours incubation



P/A or MPN

ColiControl is a state-of-the-art media for the detection of coliforms and Escherichia coli.

Designed to simplify analysis, it offers quick preparation, reliability, precision, and exclusive radiation sterilization certification.

Approved and validated according to ISO 17025 requirements, in accordance with the standard methods for the examination of water and wastewater (APHA/AWWA/WEF).

Eliminates false positives: ColiControl effectively suppresses up to 2 million heterotrophs per 100ml of sample, with exclusive inhibitors ensuring accurate results in all analyses.

One Product, multiple Applications:

- Drinking water
- Bottled water (still and sparkling\*)
- Well water
- Surface water
- Groundwater
- Seawater
- Wastewater/effluents
- UPW (Ultra-Pure Water)

## ColiControl

Total Coliforms / E.coli  
P/A or Quantification

### Easy of use

Exclusive easy-open clear plastic vial allows opening with just one hand, reducing the risk of contamination, facilitating sterile handling, and ensuring greater reliability and reproducibility in tests.



Technology	Defined Substrate Enzymatic ONPG/MUG
Detection	Total Coliforms, Escherichia coli, and thermotolerant
Incubation	18-24 Hours
Methodology	Substrate Technology Standard Methods 9223B
Analysis Type	NMP (Most Probable Number, MPN) and Presence/Absence
Shelf Life	12 months
Sample	100 ml - ColiControl100 250 ml - ColiControl250
Packaging	Individual transparent vial



No confirmation Required

18 to 24 hours incubation



No controlled Temperature Incubation Required

P/A or MPN

ColiControl is a state-of-the-art media for the detection of coliforms and Escherichia coli.

Approved and validated according to ISO 17025 requirements, require no especial laboratory equipment nor incubators.

Designed to be incubated at room temperature,, results within 12 hours for positive and up to 24 for negative

Effectively suppresses up to 2 million heterotrophs per 100ml of sample, Exclusive inhibitors allows for accurate results in all analyses.

- Validation of disinfection and filtration processes.
- Remote and Underserved Areas Without Safe Water
- Rural communities lacking access to laboratory infrastructure.
- Emergency response in humanitarian aid efforts.
- Field testing by NGOs and government agencies.

### Single dose -Complete Kit

- 1-Pair of gloves
- 2-Sterile bottle
- 3-Colicontrol Go



## ColiControl GO

Total Coliforms / E.coli  
Presence / Absence

### Easy of use

Exclusive easy-open clear plastic vial allows opening with just one hand, reducing the risk of contamination.

**Room Temperature incubation.**

**Ideal for remote locations water safety check.**



Technology	Defined Substrate Enzymatic ONPG/MUG
Detection	Total Coliforms, Escherichia coli, and thermotolerant
Incubation	18-24 Hours
Methodology	Substrate Technology
Analysis Type	Presence/Absence
Shelf Life	12 months
Sample	100 ml
Packaging	Individual transparent vial

## Poli Tray

### MPN Tray



For simple and rapid bacterial counting, specifically for quantification testing.

Based on the Most Probable Number (MPN) model according to the Standard Methods for the Examination of Water and Wastewater.

-Includes sterilization certificate, well volume, well ratio, dye test, and seal integrity.

-Packaging features high bacterial barrier, complying with national and international standards.

Tray	96 well
Sterilization	Certified methodology
Sealing	Policontrol or other brand sealer
Packing	Certifies sterile packing
Métodologia	Most Probable Number, MPN - Standard Methods for the Examination of Water and Wastewater
Fabricação	Brasil
Sample	100 ml
Quantification	up to 2419,2 NMP Coliform / E.coli
Material	Plastic

## Poli Sealer

### Selar for Trays



Poli Sealer is specially designed for sealing MPN Trays from various brands.

Constructed with highly durable aluminum with resistance connected via rotary contact, ensuring simplified operation and long instrument lifespan.

With preheating in just 5 minutes and precise temperature control, it enables optimized sealing in various conditions.

Heating	Electrical resistance
Sealing	motor-driven, heated roller
Motor revert	Reversion button
Temperature control	User defined 170 to 180C (optional)
Pre heating	5 minutes
Operation	Multi brand trays
Weight	11 kG
Voltage	110/220
Size	40 x 26,6 x 36



## Colorimetric reagents



## Powder Pillows

Field or lab use  
Easy-to-open package, no calibration  
Required for Policontrol/Hach  
instruments

Easy Tearing  
5-year shelf life

Measurement drinking/waste water, alkaline cleaners, sanitizer applications, food industry, drinking water treatment and wastewater treatment.

Instrument required: Visual/Digital colorimeters or spectrophotometers

Powder pillows combine easy dosing with photometric precision. Ideal for pool or drinking water analysis.

Can be used in Policontrol or HACH photometers without calibration.

100 or 1000 test packages.

Parameter	Free Chlorine	Total Chlorine	Iron	Aluminun
Range	0.02 - 2.5 mg/L	0.02 - 2.5 mg/L	0.02 to 3.00 mg/L	0.08 - 0.800 mg/L
Description	Powder Pillow			
Printed information	Code, Expiration Date, Parameter			
Operation	Ready to use			
Sample volume	10 ml / 5 ml		10 ml	10 ml
Method	DPD		1,10-phenantroline	ascorbic acid
Packing	100 or 1000 tests			
Shelf life	5 years Chlorine/Aluminun - 4 years Iron			
Storage	10 °C to 25 °C			
Direct Compatibility	Policontrol or Hach Instruments (no calibration required)			

Ease of use in the Field



Unmatched dosing precision – Accurate and stable reagent delivery for reliable chlorine readings.

- Clean and simple operation – Reduces operator exposure, contamination risk, and preparation time.
- Efficient supply and support – Available with fast delivery and technical support across multiple regions.
- Designed for long shelf life – Five-year shelf stability ensures optimal performance with minimal waste.
- Cost-effective and scalable – Ideal for both small labs and large-scale monitoring programs.

## Powder Dispenser

**Easy Tearing**  
**2-year shelf life**

Policontrol DPD Powder Dispenser is an advanced, ready-to-use solution for precise and consistent measurement of free chlorine in water quality analysis.

Engineered for reliability and convenience, this system combines pre-measured DPD powder reagent with a precision-designed dispenser that delivers exact doses every time—ensuring accuracy, repeatability, and user confidence in both laboratory and field environments.

Dispenser streamlines your workflow, reduce human error, and provide rapid, interference-free readings.

- Factory-calibrated and ready to use – No need for additional calibration or adjustments.
- Compatible with existing systems – Fully compatible with Hach® and Policontrol instruments.

Parameter	Free Chlorine
Measuring Range	0.02–2.5 mg/L
Reagent Format	DPD Powder Pillow
Printed Info	Code, Expiration Date, Parameter
Operation	Ready to use
Sample Volume	10 mL
Analytical Method	DPD (N,N-Diethyl-p-phenylenediamine)
Packaging Options	100 or 1000 tests
Shelf Life	5 years
Storage Temperature	10 °C to 25 °C
Instrument Compatibility	Direct with Policontrol and Hach®—no calibration required

## Optical grade glass vials

● Easy to use, pre dosed.

Validade estendida



### COD reagent Vials

Efficient, safe, economical, standardized, pre-dosed, ready for use.

Box with 25 or 150 borosilicate glass cuvettes with lids, 16 mm in diameter.

Simply add 2.5 mL of sample, perform digestion in a Digestion Block, and take the reading.

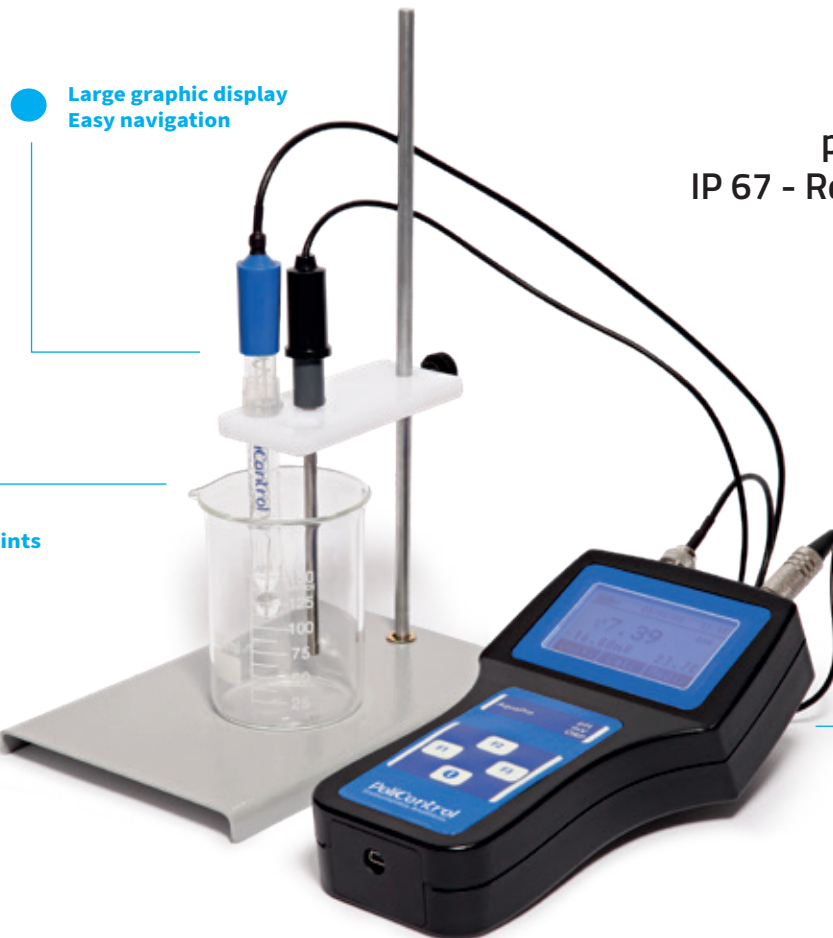
Compatible with digestion blocks and analyzers from the Hach, Merck, and Policontrol brands, without the need for curve insertion.

Parameterter	DQO	DQO	DQO
Description	Pre-dosed Liquid Reagent		
Packaging	Cuvettes		
Range	0.7 to 40 mg/L		
Operation	Ready to use		
Sample Volume	2.5 ml		
Methodology	EPA / Standard Methods		
Package	25 or 150 tests		
Expiry	5 years		
Compatibility	Policontrol / Merck / Hach		
Compatibility	Compatible with instruments from all brands; no curve adjustment required for Policontrol, Merck, and Hach instruments.		



## AquaPro

pH /mV /ORP /Temp  
IP 67 - Rechargeable Battery



Large graphic display  
Easy navigation

up to 5 calibration points

Rechargeable  
Battery

Easy to use and budget-friendly precise pH, Ion, mV, and temperature measurements

Rechargeable battery and waterproof design with IP67-rated housing for rugged protection in outdoor environments.

Calibrations can be performed in up to 5 points. pH calibration with easy recall of calibration points and slope.

User-friendly navigation setup menus ensure consistent calibrations/operation using the simple keypad layout.

Simplified, easy-to-read display shows the main measurement with temperature, stability indicator, and electrode condition icon.

Meter kits include field case with electrode, temperature sensor and pH buffers (4 - 7 - 10)

Applications:  
-Surface Water  
-Wine/Juice  
-Ethanol production  
-Concentrated Samples  
-Ground Water  
-WasteWater  
-Food processing  
-Chemical manufacturing

Parameter	pH	mV	Temperature
Range	-2 to 20 pH	- 1999.9 to + 1999.9 mV.	-20 °C to +120 °C
Accuracy	±0.01 pH	0.1 mV	± 0.3 °C
Resolution	0.1 / 0.01 / 0.001 pH	0.1 mV.	0.1 °C
Temperature compensation	Automatic		
Temperature reference	25°C		
Operation Conditions	5 to 35 °C / 5 to 95% humidity		
Probe Type	pH electrode, ORP electrode, ATC temperature probe		
Calibration	Up to 5 points - USA buffer: 1.68/4.01/7.00/10.01/12.46. DIN buffer 1.68/4.01/6.86/9.18.		
Display	Graphic LCD		
Keypad	Waterproof membrane keypad with touch-sensitive buttons		
Battery	Rechargeable Lithium Ion Battery		
Channels	1 BNC (pH/ORP/mV) 1 RCA (Temperature)		
Housing	IP 67 - ABS		
Power Supply	USB - 110/220 VAC		
Includes	pH electrode, TC temperature probe, carrying case, power supply, internal battery, pH buffers (4,01 and 7,00 pH)		

### DPD Liquid

Online instruments



### DPD Powder

Online Instruments  
Just Hidratate



Simplify your routine with Policontrol's Online Chlorine Reagent Set, specifically developed for direct use with multiple brand analyzers. This formulation comes fully prepared and its designed for maximum convenience/ performance, our reagents are chemically equivalent to the original factory reagents, ensuring seamless compatibility and reliable results without the need for calibration curve adjustments.

Kits are offered in 2 versions, Liquid and powder (Just Hidratade it)

#### Key Benefits:

- Ready-to-Use
- Seamless Compatibility – Works perfectly with multiple brands
- Consistent Accuracy – Equivalent to OEM performance, ensures reliable chlorine readings
- Convenient Packaging – Supplied in clearly labeled bottles for 30-day usage
- Competitive Pricing – Get high-quality performance at a cost-effective price

Specification	Liquid Reagent Set	Powder Reagent Set
Parameter	Free & Total Chlorine	Free Chlorine
Measurement Range	0.00 – 5.00 mg/L Cl <sub>2</sub> (standard) 0.00 – 10.00 mg/L Cl <sub>2</sub> (extended)	0.00 – 5.00 mg/L Cl <sub>2</sub> (standard) 0.00 – 10.00 mg/L Cl <sub>2</sub> (extended)
Analytical Method	DPD Method (SMEWW 4500 Cl G)	DPD Method (SMEWW 4500 Cl G)
Accuracy / Resolution	0.01 mg/L	0.01 mg/L
Instrument Compatibility	Fully compatible with multiple brands and Policontrol analyzers No calibration required	Fully compatible with multiple brands and Policontrol analyzers No calibration required

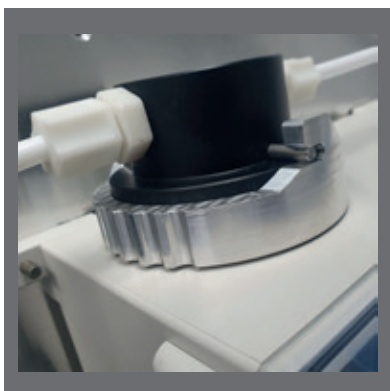
## Online turbidimeter

### Nephelometric multi-sensor



IP66  
Digital/Analogic communication  
SD card Datalogger

Multi-sensor design for low-level  
precision and sensitivity



Fast and easy calibration  
and verification

Online Turbidimeter for water, wastewater, reservoir water and monitoring applications.

Multi-sensor design delivers great low-level precision and sensitivity while minimizing variability between measurements.

30 ml sample chamber provides a fast and accurate response to changes in turbidity.

Meets EPA and ISO regulations.

Unique fast and easy calibration and verification with extremely low maintenance, a single calibration kit can be used for multiple instruments.

Light source	Tungsten / IR (ISO)
Detector	Multi detector
Method	Nephelometric
Range	0.0001 to 1000
Automatic resolution	0,0001 / 0,001 / 0,01 / 0,1 / NTU
Accuracy	±2% of reading or ±0,02 NTU (<40 NTU)/±5% (40 to 100 NTU).
Repeatability	±1%
Sample chamber	30 ml with bubble removal
Calibration	Automatic - sealed standards - 4 points
Alarms	2 Hi/Lo, NTU and % hysteresis
Analogic output	1x 4 to 20mA galvanic isolated.
Digital output	RS485 - Modbus
Power supply	110/220V / 24V



## Color 450



Online color analyser for drinking water, waste water or industrial applications, can be used to monitor any type of colored liquid.

Uses multi-wavelength detector that distinguish RGB colors and report accurate color readings.

Method Tristimulus (RGB), 400 to 700nm, 2120 E – Standard Methods 23rd edition.

Optical design that increases accuracy, removes bubbles and maintains sample pressure/flow. Assures reliable data for communication to scada via RS485 or analog outputs.

Exclusive easy calibration with certified pre-diluted calibration standards packed in cartridges.

Method	Tristimulus (RGB), 400 to 700nm - 2120 E - Standard Methods 23rd Edition.
Display	LCD Backlight
Range	0 to 500 uC.
Resolution	0.1 / 1 uC.
Readings	CU - color units -(APHA), Hazen Pt/Co.
Accuracy	+/-1CU or 3%
Light source	White LED
Calibration	0 – 10 – 100 – 500 uC, or Offset
Zero	Automatic
Memory	Configuration/calibration data stored
Sample Flow	50 a 150 ml / minute
Sample pressure	8 bar (120 psi)
Sample temperature	0 to 50°C.
Analog output	1 x 4 a 20 mA galvanic isolated
Digital output	RS485
Alarms	2 independent alarm relays
Hysteresys	Nominal in CU
Housing	IP-65, NEMA 4X.
Power Supply	240VAC (50/60 Hz).