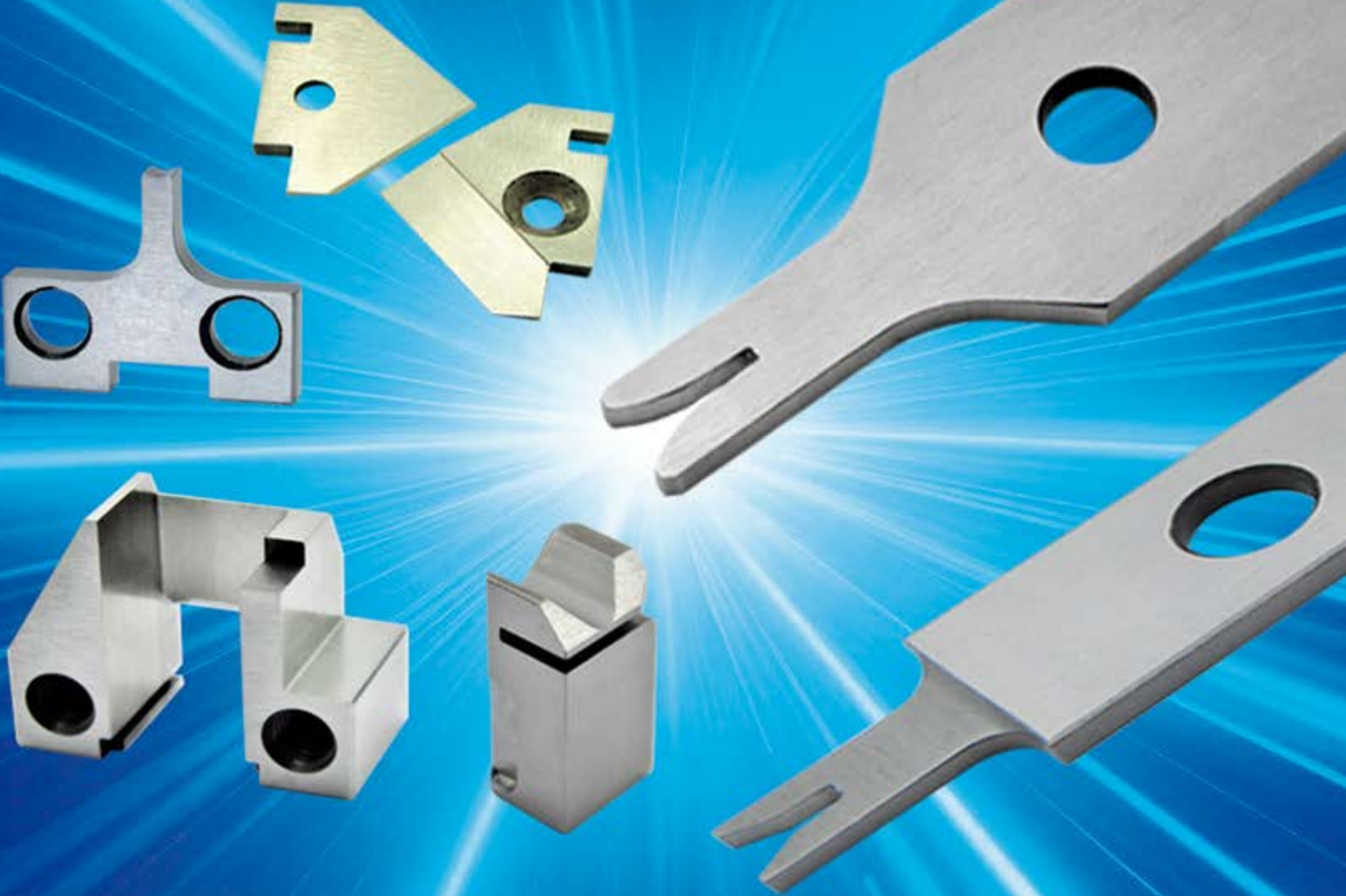




# CATALOGO: CRIMPER 2026



# Crimper



No. Tooling Manufacturing  
**120-1-456404-6**

No. Parte Original  
**1-456404-6**

Descripción  
**CRIMPER WIRE**

No. Tooling Manufacturing  
**120-1-456404-8-Y**

No. Parte Original  
**1-456404-8-Y**

Descripción  
**CRIMPER WIRE 070 F**



No. Tooling Manufacturing  
**120-1-456406-1**

No. Parte Original  
**1-456406-1**

Descripción  
**CRIMPER WIRE 090 F**

No. Tooling Manufacturing  
**120-1-456406-2-V**

No. Parte Original  
**1-456406-2-V**

Descripción  
**CRIMPER WIRE  
1417 090 F**



No. Tooling Manufacturing  
**120-1-456406-6-V**

No. Parte Original  
**1-456406-6-V**

Descripción  
**CRIMPER WIRE 090**

# Crimper



No. Tooling Manufacturing  
**120-1-2119582-0-D**

No. Parte Original  
**1-2119582-0-D**

Descripción

**CRIMPER INSULATION**

No. Tooling Manufacturing

No. Parte Original

**120-2-454765-2-L**

**2-454765-2-L**

Descripción

**CRIMPER**



No. Tooling Manufacturing

No. Parte Original

**120-2-456134-2-BZ**

**2-456134-2-BZ**

Descripción

**CRIMPER  
INSULATION**

No. Tooling Manufacturing

No. Parte Original

**120-2-456401-1-S**

**2-456401-1-S**

Descripción

**CRIMPER WIRE 45 F**



No. Tooling Manufacturing

No. Parte Original

**120-2-456408-6-J**

**2-456408-6-J**

Descripción

**CRIMPER WIRE 110 F**



# Crimper



No. Tooling Manufacturing

120-2-2119582-0

No. Parte Original

2-2119582-0

Descripción

**CRIMPER INSULATION  
F PREM**

No. Tooling Manufacturing

120-3-2119582-6-D

No. Parte Original

3-2119582-6-D

Descripción

**CRIMPER WIRE**



No. Tooling Manufacturing

120-2-1633961-6-D

No. Parte Original

2-1633961-6-D

Descripción

**CRIMPER WIRE**

No. Tooling Manufacturing

120-3-683453-2-AV

No. Parte Original

3-683453-2-AV

Descripción

**CRIMPER  
INSULATION F**



No. Tooling Manufacturing

120-4-456134-8-BY

No. Parte Original

4-456134-8-BY

Descripción

**CRIMPER**



# Crimper



No. Tooling Manufacturing  
**120-4-456406-1-V**  
(0441)

No. Parte Original  
**4-456406-1-V**  
(0441)

Descripción

**CRIMPER WIRE**

No. Tooling Manufacturing  
**120-4-456406-4-V**

No. Parte Original  
**4-456406-4-V**

Descripción

**CRIMPER WIRE 090 F**



No. Tooling Manufacturing  
**120-5-1633961-8-J**

No. Parte Original  
**5-1633961-8-J**

Descripción

**CRIMPER INSULATION**

No. Tooling Manufacturing  
**120-5-2119582-2-E**

No. Parte Original  
**5-2119582-2-E**

Descripción

**CRIMPER WIRE**



No. Tooling Manufacturing  
**120-8-456134-0-BZ**

No. Parte Compatible  
**8-456134-0-BZ**

Descripción

**CRIMPER WIRE**

# Crimper



No. Tooling Manufacturing  
**120-456401-7-S**

No. Parte Original  
**456401-7-S**

Descripción  
**CRIMPER WIRE 45 F**

No. Tooling Manufacturing  
**120-456402-2-AE**

No. Parte Original  
**456402-2-AE**

Descripción  
**CRIMPER WIRE 55 F**



No. Tooling Manufacturing  
**120-458141-2-AM**

No. Parte Original  
**458141-2-AM**

Descripción  
**CRIMPER WIRE**

No. Tooling Manufacturing  
**120-464281-1-E**

No. Parte Compatible  
**464281-1-E**

Descripción  
**CRIMPER WIRE**



No. Tooling Manufacturing  
**120-464290-1-F**

No. Parte Original  
**464290-1-F**

Descripción  
**CRIMPER WIRE**

# Crimper



No. Tooling Manufacturing  
**120-808830-2-F**

No. Parte Original  
**808830-2-F**

Descripción  
**CRIMPER WIRE**

No. Tooling Manufacturing  
**120-1633965-2-A**

No. Parte Original  
**1633965-2-A**

Descripción  
**CRIMPER  
APLICATOR 103**



No. Tooling Manufacturing  
**120-1803454-1-F**

No. Parte Original  
**1803454-1-F**

Descripción  
**CRIMPER WIRE**

No. Tooling Manufacturing  
**120-2-2119582-1**

No. Parte Original  
**2-2119582-1**

Descripción  
**CRIMPER  
INSULATION**



No. Tooling Manufacturing  
**120-3-1633730-2**

No. Parte Compatible  
**3-1633730-2**

Descripción  
**CRIMPER WIRE**

# CRIMPER



No. Tooling Manufacturing  
**120-4-1633966-7-J**

No. Parte Original  
**4-1633966-7-J**

Descripción  
**CRIMPER**

No. Tooling Manufacturing  
**120-1-456401-6-S**

No. Parte Original  
**1-456401-6-S**

Descripción  
**CRIMPER WIRE**



No. Tooling Manufacturing  
**120-1-456401-7-S**

No. Parte Original  
**1-456401-7-S**

Descripción  
**CRIMPER WIRE**

No. Tooling Manufacturing  
**120-2.1X2.4R**

No. Parte Original  
**2.1X2.4R**

Descripción  
**PUNCH INSULATION**



No. Tooling Manufacturing  
**120-2-683454-5-AM**

No. Parte Compatible  
**2-683454-5-AM**

Descripción  
**FORMADOR (0447)**

# CRIMPER



No. Tooling Manufacturing

No. Parte Original

120-5-456135-7-BZ

5-456135-7-BZ

Descripción

**FORMADOR (1637)**

No. Tooling Manufacturing

No. Parte Original

120-10-2895

10-2895

Descripción

**CRIMPER WIRE**



No. Tooling Manufacturing

No. Parte Original

120-10-4226

10-4226

Descripción

**CRIMPER WIRE**

No. Tooling Manufacturing

No. Parte Original

120-10-4226

10-4329

Descripción

**CRIMPER**



No. Tooling Manufacturing

No. Parte Original

120-10-4330

10-4330

Descripción

**CRIMPER**

# CRIMPER

---



No. Tooling Manufacturing  
**120-10-4345**

No. Parte Original  
**10-4345**

Descripción  
**CRIMPER**

---

No. Tooling Manufacturing  
**120-10-4450**

No. Parte Original  
**10-4450**

Descripción  
**CRIMPER INSULATION**



No. Tooling Manufacturing  
**120-11-18-4076**

No. Parte Original  
**11-18-4076**

Descripción  
**CRIMPER  
(REV.GDDM2/19/15)**

---

No. Tooling Manufacturing  
**120-20.99 01016004-R  
30-32**

No. Parte Original  
**20.99 01016004-R  
30-32**

Descripción  
**CRIMPER**



No. Tooling Manufacturing  
**120-20-4226**

No. Parte Original  
**20-4226**

Descripción  
**CRIMPER**

---

# CRIMPER

---



No. Tooling Manufacturing  
**120-20-4450**

No. Parte Original  
**20-4450**

Descripción

**CRIMPER INSULATION**

---

No. Tooling Manufacturing  
**120-1017-002-0200 REV B**

No. Parte Original  
**1017-002-0200 REV B**

Descripción

**FRONT**



No. Tooling Manufacturing  
**120-1017-211-0200 REV C**

No. Parte Original  
**1017-211-0200 REV C**

Descripción

**FRONT**

---

No. Tooling Manufacturing  
**120-63108**

No. Parte Original  
**63108**

Descripción

**CRIMPER WIRE**



No. Tooling Manufacturing  
**120-63510**

No. Parte Original  
**63510**

Descripción

**CRIMPER DE  
FILAMENTOS**

---

# CRIMPER

---



No. Tooling Manufacturing  
**120-63641 (U16T2)**

No. Parte Original  
**63641 (U16T2)**

Descripción  
**CRIMPER**

---

No. Tooling Manufacturing  
**120-64155 (B16R2)**

No. Parte Original  
**64155 (B16R2)**

Descripción  
**CRIMPER**



No. Tooling Manufacturing  
**120-64440**

No. Parte Original  
**64440**

Descripción  
**CRIMPER  
INSULATION**

---

No. Tooling Manufacturing  
**120-64565**

No. Parte Original  
**64565**

Descripción  
**CRIMPER  
INSULATION.**



No. Tooling Manufacturing  
**120-64671**

No. Parte Original  
**64671**

Descripción  
**CRIMPER  
INSULATION**

---

# CRIMPER

---



No. Tooling Manufacturing  
**120-63821**

No. Parte Original  
**63821**

Descripción  
**CRIMPER**

---

No. Tooling Manufacturing  
**120-10-4363**

No. Parte Original  
**10-4363**

Descripción  
**CRIMPER**



No. Tooling Manufacturing  
**120-CHS-A066-01**

No. Parte Original  
**CHS-A066-01**

Descripción  
**CRIMPER**

---

No. Tooling Manufacturing  
**120-CHS-A066-02**

No. Parte Original  
**CHS-A066-02**

Descripción  
**FORMADOR**



No. Tooling Manufacturing  
**120-CHS-A067-02**

No. Parte Original  
**CHS-A067-02**

Descripción  
**FORMADOR**

# CRIMPER



No. Tooling Manufacturing  
**120-568176-7-AC**

No. Parte Original  
**568176-7-AC**

Descripción

**CRIMPER WIRE**

No. Tooling Manufacturing  
**120-6344632-08**

No. Parte Original  
**6344632-08**

Descripción

**INSULATION PUNCH**



No. Tooling Manufacturing  
**120-78282309  
(DJ454A)**

No. Parte Original  
**78282309  
(DJ454A)**

Descripción

**CRIMPER**

No. Tooling Manufacturing  
**120-62519708**

No. Parte Original  
**662519708**

Descripción

**INSULATION PUNCH**



No. Tooling Manufacturing  
**120-662519709**

No. Parte Original  
**662519709**

Descripción

**CRIMPER WIRE**

# CRIMPER



No. Tooling Manufacturing  
**120-20.98 010160004**  
**20.32**

No. Parte Original  
**20.98 010160004**  
**20.32**

Descripción  
**CRIMPER**

No. Tooling Manufacturing  
**120-1-456402-5-AU**

No. Parte Original  
**1-456402-5-AU**

Descripción

**CRIMPER (1705)**



No. Tooling Manufacturing  
**120-2-456404-5-AL**

No. Parte Original  
**2-456404-5-AL**

Descripción

**PUNCH WIRE**

No. Tooling Manufacturing  
**120-20-4363**

No. Parte Original  
**20-4363**

Descripción

**FORMADOR**



No. Tooling Manufacturing  
**120-1-45640-7-M**

No. Parte Original  
**1-456400-7-M**

Descripción

**CRIMPER 1832**

# CRIMPER



No. Tooling Manufacturing 120-2-456134-5-AZ  
No. Parte Original 2-456134-5-AZ

Descripción  
**CRIMPER**

No. Tooling Manufacturing  
**120-2-456135-4**

No. Parte Original  
**2-456135-4**

Descripción  
**CRIMPER**



No. Tooling Manufacturing 120-2-1633730-4-C  
No. Parte Original 2-1633730-4-C

Descripción  
**CRIMPER (1626)**

No. Tooling Manufacturing  
**120-2-2119582-4-D**

No. Parte Original  
**2-2119582-4-D**

Descripción  
**INSULATOR PUNCH**



No. Tooling Manufacturing 120-3-456135-0  
No. Parte Original 3-456135-0 REV S

**REV S**  
Descripción  
**FORMADOR**

# CRIMPER



No. Tooling Manufacturing  
**120-3-456404-1-AL**

No. Parte Original  
**3-456404-1-AL**

Descripción  
**CRIMPER**

No. Tooling Manufacturing  
**120-3-456406-3-V**

No. Parte Original  
**3-456406-3-V**

Descripción  
**CRIMPER**



No. Tooling Manufacturing  
**120-3-683453-3-AV**

No. Parte Original  
**3-683453-3-AV**

Descripción  
**CRIMPER**



No. Tooling Manufacturing

No. Parte Original

**120-4B1660701**  
**/SM16M1D70**  
Descripción

**4B1660701**  
**/SM16M1D70**

**FORMADOR**



No. Tooling Manufacturing  
**120-4B1660801**

No. Parte Original  
**4B1660801**

Descripción  
**FORMADOR**



# CRIMPER



No. Tooling Manufacturing  
**120-4B1660803**  
191290- 2650

No. Parte Original  
**4B1660803**  
191290- 2650

Descripción

**FORMADOR**

No. Tooling Manufacturing  
**120-456424-5-D**

No. Parte Original  
**456424-5-D**

Descripción

**CRIMPER**



No. Tooling Manufacturing  
**120-5-1803016-4**

No. Parte Original  
**5-1803016-4**

Descripción

**INSULATION PUNCH**

No. Tooling Manufacturing  
**120-7-1633609-9-T**

No. Parte Original  
**7-1633609-9-T**

Descripción

**CRIMPER 1508**



No. Tooling Manufacturing  
**120-7-2119582-2-J**

No. Parte Original  
**7-2119582-2-J**

Descripción

**CRIMPER**

# CRIMPER



No. Tooling Manufacturing  
**120-8-456406-1**

No. Parte Original  
**8-456406-1**

Descripción  
**FORMADOR**

No. Tooling Manufacturing  
**120-10-3907**

No. Parte Original  
**10-3907**

Descripción  
**APPLITEK**



No. Tooling Manufacturing  
**120-10-4432**

No. Parte Original  
**10-4432**

Descripción  
**CRIMPER DE  
FILAMENTOS**

No. Tooling Manufacturing  
**120-10-4457**

No. Parte Original  
**10-4457**

Descripción  
**CRIMPER DE  
FILAMENTOS**



No. Tooling Manufacturing  
**120-10-4510**

No. Parte Original  
**10-4510**

Descripción  
**PUNCH WIRE**

# CRIMPER

---



No. Tooling Manufacturing  
**120-11-18-5244-C**

No. Parte Original  
**11-18-5244-C**

Descripción  
**WIRE PUNCH**

---

No. Tooling Manufacturing

**120-11-18-5246**

No. Parte Original

**11-18-5246**

Descripción

**Rev.D (DDM 1/5/05)**



No. Tooling Manufacturing  
**120-20-4329**

No. Parte Original  
**20-4329**

Descripción  
**FORMADOR**

---

No. Tooling Manufacturing

**120-20-4432**

No. Parte Original

**20-4432**

Descripción

**CRIMPER**



No. Tooling Manufacturing  
**120-20-4457**

No. Parte Original  
**20-4457**

Descripción  
**PUNCH WIRE**

# CRIMPER



No. Tooling Manufacturing  
**120-64006**

No. Parte Original  
**64006**

Descripción  
**WIRE PUNCH**

No. Tooling Manufacturing  
**120-456406-2-D**

No. Parte Original  
**456406-2-D**

Descripción  
**CRIMPER**



No. Tooling Manufacturing  
**120-456409-6-G**

No. Parte Original  
**456409-6-G**

Descripción  
**CRIMPER WIRE**

No. Tooling Manufacturing  
**120-1633966-6-A**

No. Parte Original  
**1633966-6-A**

Descripción  
**FORMADOR (1526)**



No. Tooling Manufacturing  
**120-2119784-5-E**

No. Parte Original  
**2119784-5-E**

Descripción  
**FORMADOR (1408)**

# CRIMPER

---



No. Tooling Manufacturing  
**120-6344408-02**

No. Parte Original  
**6344408-02**

Descripción  
**REV-G DDM2/23/09  
CRIMPER**

---

No. Tooling Manufacturing  
**120-6344412-07**

No. Parte Original  
**6344412-07**

Descripción  
**CRIMPER**



No. Tooling Manufacturing  
**120-6344616-22**

No. Parte Original  
**6344616-22**

Descripción  
**CRIMPER WIRE**

---

No. Tooling Manufacturing  
**120-63282409 C.P.**

No. Parte Original  
**63282409 C.P.**

Descripción  
**FORMADOR (1526)**



No. Tooling Manufacturing  
**120-634540069**

No. Parte Original  
**634540069**

Descripción  
**REV-G DDM2/18/09  
CRIMPER**

# CRIMPER



No. Tooling Manufacturing

**120-662389309**

**EL-12020801**

**10.05.18**

Descripción

**CRIMPER**

No. Parte Original

**662389309**

**EL-12020801**

**10.05.18**

No. Tooling Manufacturing  
**120-991463979-N18**

No. Parte Original  
**991463979-N18**

Descripción

**CRIMPER**



No. Tooling Manufacturing

**120-662519608**

No. Parte Original

**662519608**

Descripción

**INSULATION  
CRIMPER**

No. Tooling Manufacturing  
**120-CHP-K024-01**

No. Parte Original  
**CHP-K024-01**

Descripción

**WIRE PUNCH**



No. Tooling Manufacturing  
**120-CHP-K024-02**

No. Parte Original  
**CHP-K024-02**

Descripción

**INSULATION  
PUNCH**



# CRIMPER



No. Tooling Manufacturing

No. Parte Original

120-2-456404-5-AL

2-456404-5-AL

Descripción

**PUNCH WIRE**

No. Tooling Manufacturing

No. Parte Original

120-7-1490019-7-AL

7-1490019-7-AL

Descripción

**WIRE CRIMPER**



No. Tooling Manufacturing

No. Parte Original

120-9-2119582-0-P

9-2119582-0-P

Descripción

**INSULATION  
CRIMPER**

No. Tooling Manufacturing

No. Parte Original

120-10-4098

10-4098

Descripción

**CRIMPER WIRE**



No. Tooling Manufacturing

No. Parte Original

120-10-4368-1

10-4368-1

Descripción

**INSULATION  
PUNCH**

# CRIMPER



No. Tooling Manufacturing  
**120-20-4098-1**

No. Parte Original  
**20-4098-1**

Descripción  
**CRIMPER**

No. Tooling Manufacturing  
**120-6345712-12 REV E**

No. Parte Original  
**6345712-12 REV E**

Descripción  
**CRIMPER**



No. Tooling Manufacturing  
**120-456409-5-U**

No. Parte Original  
**456409-5-U**

Descripción  
**CRIMPER (2051)**

No. Tooling Manufacturing  
**120-20-4368-1**

No. Parte Original  
**20-4368-1**

Descripción  
**INSULATION  
CRIMPER**



No. Tooling Manufacturing  
**120-6344412-10**

No. Parte Original  
**6344412-10**

Descripción  
**WIRE CRIMPER**



# CRIMPER



No. Tooling Manufacturing  
**120-6344615-14**

No. Parte Original  
**6344615-14**

Descripción  
**INSULATION  
CRIMPER**

No. Tooling Manufacturing  
**120-1-456135-1-BW**

No. Parte Original  
**1-456135-1-BW**

Descripción  
**CRIMPER**



No. Tooling Manufacturing  
**120-662389408**  
**EL-12124582**  
**EL-12124580**  
**10.05.07**  
Descripción

No. Parte Original  
**662389408**  
**EL-12124582**  
**EL-12124580**  
**10.05.07**

**CRIMPER  
(2051)**

No. Tooling Manufacturing  
**120-1-456405-5**

No. Parte Original  
**1-456405-5**

Descripción  
**INSULATION  
CRIMPER**



No. Tooling Manufacturing  
**120-1-456411-2-D**

No. Parte Original  
**1-456411-2-D**

Descripción  
**WIRE CRIMPER**

# CRIMPER



No. Tooling Manufacturing 120-3-456402-1-AE  
No. Parte Original 3-456402-1-AE

Descripción  
**INSULATION  
CRIMPER**

No. Tooling Manufacturing  
120-4-456402-5

No. Parte Original  
4-456402-5

Descripción  
**CRIMPER**



No. Tooling Manufacturing 120-6-456402-9-AU  
No. Parte Original 6-456402-9-AU

Descripción  
**WIRE CRIMPER  
(2005)**

No. Tooling Manufacturing  
120-9-1633966-8-W

No. Parte Original  
9-1633966-8-W

Descripción  
**WIRE CRIMPER (2005)**



No. Tooling Manufacturing  
120-10-3580

No. Parte Original  
10-3780

Descripción  
**CRIMPER**

# CRIMPER

---



No. Tooling Manufacturing  
**120-10-4136-1**

No. Parte Original  
**10-4136-1**

Descripción  
**CRIMPER**

---

No. Tooling Manufacturing  
**120-10-4328**

No. Parte Original  
**10-4328**

Descripción  
**CRIMPER**



No. Tooling Manufacturing  
**120-11-18-4007**

No. Parte Original  
**11-18-4007**

Descripción  
**CRIMPER**

---

No. Tooling Manufacturing  
**120-11-18-4077**

No. Parte Original  
**11-18-4077**

Descripción  
**INSULATION  
PUNCH**



No. Tooling Manufacturing  
**120-11-18-5383-B**

No. Parte Original  
**11-18-5383-B**

Descripción  
**CRIMPER**

# CRIMPER



No. Tooling Manufacturing  
**120-11-18-5465**

No. Parte Original  
**11-18-5465**

Descripción  
**CRIMPER**

No. Tooling Manufacturing  
**120-CHS-A067-01 E1659**

No. Parte Original  
**CHS-A067-01 E1659**

Descripción  
**WIRE CRIMPER**



No. Tooling Manufacturing  
**120-13-060**

No. Parte Original  
**13-060**

Descripción  
**WIRE CRIMPER**

No. Tooling Manufacturing  
**120-20.98 010150047**  
**18.30-12**  
Descripción

No. Parte Original  
**20.98 010150047**  
**18.30-12**

**CRIMPER**



No. Tooling Manufacturing  
**120-20.98 010250010**  
**27.30 12**

No. Parte Original  
**20.98 010250010**  
**27.30 12**

Descripción  
**CRIMPER**

# CRIMPER

---



No. Tooling Manufacturing  
**120-20.99 010150046-R**  
**23.30**

No. Parte Original  
**20.99 010150046-R**  
**23.30**

Descripción  
**CRIMPER**

---

No. Tooling Manufacturing  
**120-20.99 010250010-R**  
**40.32**  
Descripción  
**CRIMPER**

No. Parte Original  
**20.99 010250010-R**  
**40.32**



No. Tooling Manufacturing  
**120-20-2895-3.53CW**

No. Parte Original  
**20-2895-3.53CW**

Descripción  
**CRIMPER**

---

No. Tooling Manufacturing  
**120-63311408**

No. Parte Original  
**63311408**

Descripción  
**WIRE CRIMPER**



No. Tooling Manufacturing  
**120-63312009**

No. Parte Original  
**63312009**

Descripción  
**WIRE CRIMPER**

---

# CRIMPER



No. Tooling Manufacturing  
**120-20-4136**

No. Parte Original  
**20-4136**

Descripción  
**CRIMPER**

No. Tooling Manufacturing  
**120-20-4328**

No. Parte Original  
**20-4328**

Descripción  
**CRIMPER**



No. Tooling Manufacturing  
**120-1633962-3-D**

No. Parte Original  
**1633962-3-D**

Descripción  
**CRIMPER**

No. Tooling Manufacturing  
**120-3.2 X 1.7**

No. Parte Original  
**3.2 X 1.7**

Descripción  
**CRIMPER**



No. Tooling Manufacturing  
**120-634615-10**

No. Parte Original  
**6344615-10**

Descripción  
**CRIMPER**

# CRIMPER



No. Tooling Manufacturing  
**120-634540146**  
**REV. A**

No. Parte Original  
**634540146**  
**REV. A**

Descripción  
**CRIMPER**

No. Tooling Manufacturing  
**120-634540146**  
**REV. A**

No. Parte Original  
**662389409**  
**EL-12124582**  
**EL-12124580**  
**10.05.10**

Descripción  
**CRIMPER**



No. Tooling Manufacturing  
**120-11-18-5258**

No. Parte Original  
**11-18-5258**

Descripción  
**CRIMPER**

No. Tooling Manufacturing  
**120-6344416-09**

No. Parte Original  
**6344416-09**

Descripción  
**WIRE CRIMPER**



No. Tooling Manufacturing  
**120-28464-73**

No. Parte Original  
**28464-73**

Descripción  
**CRIMPER**

# CRIMPER



No. Tooling Manufacturing  
**120-CHP-K027-01**

No. Parte Original  
**CHP-K027-01**

Descripción

**CRIMPER (170511)  
012901-001**

No. Tooling Manufacturing  
**120-CHP-K027-02**

No. Parte Original  
**CHP-K027-02**

Descripción

**CRIMPER (170505)  
012901-002**



No. Tooling Manufacturing  
**120-1803482-4-A**

No. Parte Original  
**1803482-4-A**

Descripción

**CRIMPER**

No. Tooling Manufacturing  
**120-6-1490019-5-V**

No. Parte Original  
**6-1490019-5-V**

Descripción

**CRIMPER**



No. Tooling Manufacturing  
**120-3-456406-3-AE**

No. Parte Original  
**3-456406-3-AE**

Descripción

**CRIMPER**

# CRIMPER



No. Tooling Manufacturing  
**120-2-456406-2-V**

No. Parte Original  
**2-456406-2-V**

Descripción

**CRIMPER WIRE**

No. Tooling Manufacturing  
**120456408-5-T**

No. Parte Original  
**456408-5-T**

Descripción

**CRIMPER**



No. Tooling Manufacturing  
**120-7-456408-6-AC**

No. Parte Original  
**7-456408-6-AC**

Descripción

**CRIMPER**



No. Tooling Manufacturing  
**120-6-2119582-7-J**

No. Parte Original  
**6-2119582-7-J**

Descripción

**CRIMPER**



No. Tooling Manufacturing  
**120-456402-1-AE**

No. Parte Original  
**456402-1-AE**

Descripción

**CRIMPER WIRE**



# CRIMPER



No. Tooling Manufacturing  
**120-5-456406-7-V**

No. Parte Original  
**5-456406-7-V**

Descripción

**CRIMPER**

No. Tooling Manufacturing  
**120-3-456404-6-Y**

No. Parte Original  
**3-456404-6-Y**

Descripción

**CRIMPER WIRE**



No. Tooling Manufacturing  
**120-1-1752057-8-G**

No. Parte Original  
**1-1752057-8-G**

Descripción

**CRIMPER WIRE**

No. Tooling Manufacturing  
**120-1-456402-8-AE**

No. Parte Original  
**1-456402-8-AE**

Descripción

**CRIMPER WIRE**



No. Tooling Manufacturing  
**120-1803017-9-A**

No. Parte Original  
**1803017-9-A**

Descripción

**CRIMPER**

# CRIMPER



No. Tooling Manufacturing  
**120-6344628-27**  
**REV.E**

No. Parte Original  
**6344628-27**  
**REV.E**

Descripción

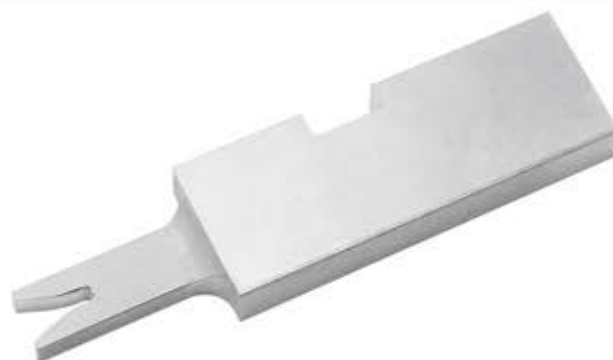
**CRIMPER**

No. Tooling Manufacturing  
**120-6344416-05**  
**REV.H**

No. Parte Original  
**6344416-05**  
**REV.H**

Descripción

**CRIMPER**



No. Tooling Manufacturing  
**120-456401-3-AE**

No. Parte Original  
**456401-3-AE**

Descripción

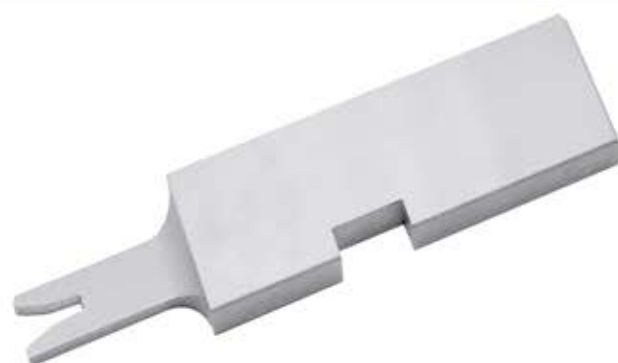
**CRIMPER**

No. Tooling Manufacturing  
**120-6344619-02**  
**REV.E**

No. Parte Original  
**6344619-02**  
**REV.E**

Descripción

**CRIMPER**



No. Tooling Manufacturing  
**120-28-464-74**

No. Parte Original  
**28-464-74**

Descripción

**CRIMPER**

# CRIMPER



No. Tooling Manufacturing  
**120-456402-2-AU**

No. Parte Original  
**456402-2-AU**

Descripción  
**CRIMPER  
WIRE 090 F**

No. Tooling Manufacturing  
**120-20.98  
010150046  
16.20**

No. Parte Original  
**20.98  
010150046  
16.20**

Descripción  
**CRIMPER  
WIRE (2029)**



No. Tooling Manufacturing  
**120-10-4551**

No. Parte Original  
**10-4551**

Descripción  
**APPLICATOR  
CRIMPER 103**

No. Tooling Manufacturing  
**120-634571403  
REV. A**  
Descripción

No. Parte Original  
**634571403  
REV. A**

**CRIMPER**



No. Tooling Manufacturing  
**120-1-354003-0-B**

No. Parte Original  
**1-354003-0-B**

Descripción  
**CRIMPER**

# CRIMPER

---



No. Tooling Manufacturing 120-1-1803016-7-B  
No. Parte Original 1-1803016-7-B

Descripción  
**CRIMPER**

---

No. Tooling Manufacturing 120-2-1490019-4-J  
No. Parte Original 2-1490019-4-J

Descripción  
**CRIMPER**



No. Tooling Manufacturing 120-638914001  
REV.A  
No. Parte Original 638914001  
REV.A

Descripción  
**CRIMPER**

---

No. Tooling Manufacturing 120-4-1633664-3-P  
No. Parte Original 4-1633664-3-P

Descripción  
**CRIMPER**



No. Tooling Manufacturing 120-7-2119784-3-R  
No. Parte Original 7-2119784-3-R

Descripción  
**CRIMPER  
INSULATION**

# CRIMPER



No. Tooling Manufacturing  
**120-00191-060CP**

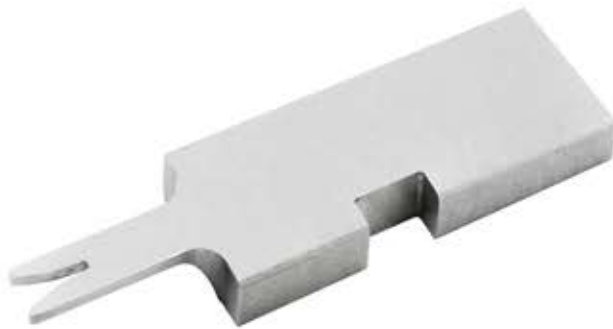
No. Parte Original  
**00191-060CP**

Descripción  
**CRIMPER**

No. Tooling Manufacturing  
**120-63406**

No. Parte Original  
**63406**

Descripción  
**CRIMPER**



No. Tooling Manufacturing  
**120-6344410-03 REV.F**

No. Parte Original  
**6344410-03 REV.F**

Descripción  
**CRIMPER**

No. Tooling Manufacturing  
**120-6344614-02 REV.E**

No. Parte Original  
**6344614-02 REV.E**

Descripción  
**CRIMPER**



No. Tooling Manufacturing  
**120-9-14900-19-7**

No. Parte Original  
**9-14900-19-7**

Descripción  
**CRIMPER**

# CRIMPER



No. Tooling Manufacturing  
120-1633022-6

No. Parte Original  
1633022-6

Descripción  
**CRIMPER**

No. Tooling Manufacturing  
120-SPH-002-T-P0-5L

No. Parte Original  
SPH-002-T-P0-5L

Descripción  
**WIRE CRIMPER**



No. Tooling Manufacturing  
1206344419-09

No. Parte Original  
6344419-09

Descripción  
**WIRE CRIMPER**

No. Tooling Manufacturing  
120-004-0011

No. Parte Original  
004-0011

Descripción  
**H028 FORMADOR  
620TR**



No. Tooling Manufacturing  
120-004-0014

No. Parte Original  
004-0014

Descripción  
**FORMADOR TR717**

# CRIMPER



No. Tooling Manufacturing  
**120-004-0019**

No. Parte Original  
**004-0019**

Descripción  
**H036  
FORMADOR 600**

No. Tooling Manufacturing  
**120-004-0022**

No. Parte Original  
**004-0022**

Descripción  
**FORMADOR TR728**



No. Tooling Manufacturing  
**120-004-0047**

No. Parte Original  
**004-0047**

Descripción  
**H066-B  
FORMADOR AMP**

No. Tooling Manufacturing  
**120-004-0056**

No. Parte Original  
**004-0056**

Descripción  
**H078 CRIMPADOR  
SUPERIOR**



No. Tooling Manufacturing  
**120-004-0086**

No. Parte Original  
**004-0086**

Descripción  
**H111 FORMADOR  
605TR**

# CRIMPER

---



No. Tooling Manufacturing  
**120-004-0093**

No. Parte Original  
**004-0093**

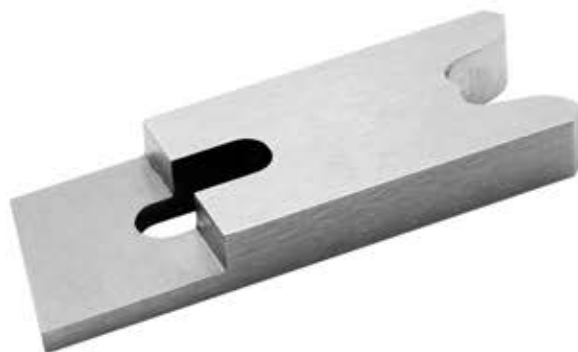
Descripción  
**H120  
FORMADOR**

---

No. Tooling Manufacturing  
**120-004-0134**

No. Parte Original  
**004-0134**

Descripción  
**FORMADOR AIS**



No. Tooling Manufacturing  
**120-004-0144**

No. Parte Original  
**004-0144**

Descripción  
**H168 FORMADOR  
MEGOMAT TR728**

---

No. Tooling Manufacturing  
**120-004-0147**

No. Parte Original  
**004-0147**

Descripción  
**FORMADOR MEGOMAT  
AMP AISLANTE**



No. Tooling Manufacturing  
**120-004-0150**

No. Parte Original  
**004-0150**

Descripción  
**FORMADOR  
AMP1**

# CRIMPER



No. Tooling Manufacturing  
**120- 004-0153**

No. Parte Original  
**004-0153**

Descripción  
**FORMADOR  
MEGOMAT**

No. Tooling Manufacturing  
**120-004-0164**

No. Parte Original  
**004-0164**

Descripción  
**FORMADOR  
BITECH 728**



No. Tooling Manufacturing  
**120-8N90764-A**

No. Parte Original  
**8N90764-A**

Descripción  
**INSULATION  
CRIMP PLATE**

No. Tooling Manufacturing  
**120-8NC002-A**

No. Parte Original  
**8NC002-A**

Descripción  
**CRIMPER**



No. Tooling Manufacturing  
**120-8NCD002-Z**

No. Parte Original  
**8NCD002-Z**

Descripción  
**CRIMP TOOL 109**

# CRIMPER

---



No. Tooling Manufacturing  
**120-1633468-5-C**

No. Parte Original  
**1633468-5-C**

Descripción  
**CRIMPER**

---

No. Tooling Manufacturing  
**120-107-19H-A**

No. Parte Original  
**107-19H-A**

Descripción  
**CRIMPER TOOL**



No. Tooling Manufacturing  
**120-109-28H**

No. Parte Original  
**109-28H**

Descripción  
**CRIMPER TOOL**

---

No. Tooling Manufacturing  
**120-70718A**

No. Parte Original  
**70718A**

Descripción  
**CRIMPER  
TOOLING**



No. Tooling Manufacturing  
**120-139611-ABIT**

No. Parte Original  
**139611-ABIT**

Descripción  
**ABITS CRIMP TOOL**

---

# CRIMPER



No. Tooling Manufacturing  
**120-140820**

No. Parte Original  
**140820**

Descripción  
**CRIMPER**

No. Tooling Manufacturing  
**120-CT-994TJ-B**

No. Parte Original  
**CT-994TJ-B**

Descripción  
**CRIMP TOOL (994)**



No. Tooling Manufacturing  
**120-CT-1000**

No. Parte Original  
**CT-1000**

Descripción  
**APPLITEK  
FORMADOR**

No. Tooling Manufacturing  
**120-CT-1000R**

No. Parte Original  
**CT-1000R**

Descripción  
**APPLITEK  
CT-1000R**



No. Parte Compatible  
**120-CT-2357**

No. Parte Original  
**CT-2357**

Descripción  
**APPLITEK PUNCH**

# CRIMPER

---



No. Tooling Manufacturing  
**120-CT-19750**

No. Parte Original  
**CT-19750**

Descripción  
**ABITS CRIMP  
TOOL**

---

No. Tooling Manufacturing  
**120-H132**

No. Parte Original  
**H132**

Descripción  
**FORMADOR**



No. Tooling Manufacturing  
**120-H082**

No. Parte Original  
**H082**

Descripción  
**FORMADOR  
HO82 621 OMZ**

---

No. Tooling Manufacturing  
**120-TR519**

No. Parte Original  
**TR519**

Descripción  
**TROQEL NUEVO  
FORMADOR**



No. Tooling Manufacturing  
**120-TR717**

No. Parte Original  
**TR717**

Descripción  
**CRIMPER**

# CRIMPER

---



No. Tooling Manufacturing  
**120-140821**

No. Parte Original  
**140821**

Descripción  
**CRIMPER**

---

No. Tooling Manufacturing  
**120-CP-464**

No. Parte Original  
**CP-464**

Descripción  
**CRIMPER**



No. Tooling Manufacturing  
**120-CP-469**

No. Parte Original  
**CP-469**

Descripción  
**CRIMPER**

---

No. Tooling Manufacturing  
**120-CP-470**

No. Parte Original  
**CP-470**

Descripción  
**CRIMPER**



No. Tooling Manufacturing  
**120-CP-519**

No. Parte Original  
**CP-519**

Descripción  
**CRIMPER**

---

# CRIMPER



No. Tooling Manufacturing  
**120-CP-531**

No. Parte Original  
**CP-531**

Descripción

**CRIMPER**

No. Tooling Manufacturing  
**120-CPM2603**

No. Parte Original  
**CPM2603**

Descripción  
**CRIMPER**



No. Tooling Manufacturing  
**120-DA-3270-19**

No. Parte Original  
**DA-3270-19**

Descripción

**CRIMPER**

No. Tooling Manufacturing  
**120-DA-3270-22**

No. Parte Original  
**DA-3270-22**

Descripción  
**CRIMPER**



No. Tooling Manufacturing  
**120-DA-3551-1**

No. Parte Original  
**DA-3551-1**

Descripción  
**CRIMPER**



# CRIMPER



No. Tooling Manufacturing  
**120-CP-531**

No. Parte Original  
**CP-531**

Descripción  
**CRIMPER**

No. Tooling Manufacturing  
**120-CPM2603**

No. Parte Original  
**CPM2603**

Descripción  
**CRIMPER**



No. Tooling Manufacturing  
**120-DA-3270-19**

No. Parte Original  
**DA-3270-19**

Descripción  
**CRIMPER**

No. Tooling Manufacturing  
**120-DA-3270-22**

No. Parte Original  
**DA-3270-22**

Descripción  
**CRIMPER**



No. Tooling Manufacturing  
**120-DA-3551-1**

No. Parte Original  
**DA-3551-1**

Descripción  
**CRIMPER**

# CRIMPER



No. Tooling Manufacturing  
**120-IP404**

No. Parte Original  
**IP404**

Descripción  
**CRIMPER**

No. Tooling Manufacturing  
**120-IP408**

No. Parte Original  
**IP408**

Descripción  
**CRIMPER**



No. Tooling Manufacturing  
**120-312284**

No. Parte Original  
**312284**

Descripción  
**CRIMPER**

No. Tooling Manufacturing  
**120-312308**

No. Parte Original  
**312308**

Descripción  
**CRIMPER**



No. Tooling Manufacturing  
**120-312310**

No. Parte Original  
**312310**

Descripción  
**CRIMPER**

# CRIMPER



No. Tooling Manufacturing  
**120-312381**

No. Parte Original  
**312381**

Descripción  
**CRIMPER**

No. Tooling Manufacturing  
**120-312394**

No. Parte Original  
**312394**

Descripción  
**CRIMPER**



No. Tooling Manufacturing  
**120-312402**

No. Parte Original  
**312402**

Descripción  
**CRIMPER**

No. Tooling Manufacturing  
**120-312407**

No. Parte Original  
**312407**

Descripción  
**CRIMPER**



No. Tooling Manufacturing  
**120-312408**

No. Parte Original  
**312408**

Descripción  
**CRIMPER**

# CRIMPER

---



No. Tooling Manufacturing  
**120-312645**

No. Parte Original  
**312645**

Descripción  
**CRIMPER**

---

No. Tooling Manufacturing  
**120-312646**

No. Parte Original  
**312646**

Descripción  
**CRIMPER**



No. Tooling Manufacturing  
**120-312695**

No. Parte Original  
**312695**

Descripción  
**CRIMPER**

---

No. Tooling Manufacturing  
**120-312696**

No. Parte Original  
**312696**

Descripción  
**CRIMPER**



No. Tooling Manufacturing  
**120-312346**

No. Parte Original  
**312346**

Descripción  
**CRIMPER**

# CRIMPER



No. Tooling Manufacturing  
**120- 3-456135-0-CC**

No. Parte Original  
**3-456135-0-CC**

Descripción  
**CRIMPER  
INSULACION**

No. Tooling Manufacturing  
**120-63855**

No. Parte Original  
**63855**

Descripción  
**CRIMPER WIRE**



No. Tooling Manufacturing  
**120-64438**

No. Parte Original  
**64438**

Descripción  
**CRIMPER WIRE**

No. Tooling Manufacturing  
**120-456400-9-N**

No. Parte Original  
**456400-9-N**

Descripción  
**CRIMPER WIRE**



No. Tooling Manufacturing  
**120-6344408-04  
REV. G**

No. Parte Original  
**6344408-04  
REV. G**

Descripción  
**CRIMPER WIRE**



# CRIMPER



No. Tooling Manufacturing

**120-20.98**  
**010150005**  
**16.23**

Descripción

**CRIMPER WIRE**

No. Parte Original

**20.98**  
**010150005**  
**16.23**

No. Tooling Manufacturing

**120-20.99**  
**010150005-R**  
**23.25**

Descripción

**CRIMPER WIRE**

No. Parte Original

**20.99**  
**010150005-R**  
**23.25**



No. Tooling Manufacturing  
**120-63248 B11U2**

Descripción

**CRIMPER WIRE**

No. Parte Original  
**63248 B11U2**

No. Tooling Manufacturing  
**120-64685 6K20S8**

Descripción

**CRIMPER WIRE**

No. Parte Original  
**64685 6K20S8**



No. Tooling Manufacturing  
**120-CAT-1-456402-7**

Descripción

**CRIMPER WIRE**

No. Parte Original  
**CAT-1-456402-7**

# CRIMPER



No. Tooling Manufacturing 120-5-456402-4-AU  
No. Parte Original 5-456402-4-AU

Descripción  
**CRIMPER WIRE**

No. Tooling Manufacturing  
**120-1-2119582-2-L**

No. Parte Original  
**1-2119582-2-L**

Descripción  
**CRIMPER WIRE**



No. Tooling Manufacturing  
**120-64685**

No. Parte Original  
**64685**

Descripción  
**CRIMPER WIRE**

No. Tooling Manufacturing  
**120-64685**

No. Parte Original  
**6344407-05  
REV.C**

Descripción  
**CRIMPER WIRE**



No. Tooling Manufacturing  
**120-6344614-30  
REV. F**

No. Parte Original  
**6344614-30  
REV. F**

Descripción

**CRIMPER WIRE**



# CRIMPER



No. Tooling Manufacturing  
**120-6344608-08**

**REV.F**

Descripción

**CRIMPER WIRE**

No. Parte Original  
**6344608-08**  
**REV.F**

No. Tooling Manufacturing  
**120-27569004-12**

Descripción

**CRIMPER WIRE**

No. Parte Original  
**27569004-12**



No. Tooling Manufacturing  
**120-27568911-11**

Descripción

**CRIMPER WIRE**

No. Parte Original  
**27568911-11**



No. Tooling Manufacturing  
**120-CAT-9-1490019-7**

Descripción

**CRIMPER WIRE**

No. Parte Original  
**CAT-9-1490019-7**



No. Tooling Manufacturing  
**120-2-456402-4-UA**

Descripción

**CRIMPER WIRE**

No. Parte Original  
**2-456402-4-UA**



# CRIMPER



No. Tooling Manufacturing  
**120-D-4345**

No. Parte Original  
**D-4345**

Descripción  
**CRIMPER**

No. Tooling Manufacturing  
**120-1-2119784-3-C.**

No. Parte Original  
**1-2119784-3-C.**

Descripción  
**CRIMPER**



No. Tooling Manufacturing  
**120-8-456135-3-BW.**

No. Parte Original  
**8-456135-3-BW.**

Descripción  
**CRIMPER**

No. Tooling Manufacturing  
**120-662519609**

No. Parte Original  
**662519609**

Descripción  
**CRIMPER**



No. Tooling Manufacturing  
**120-2-456403-6-AG**

No. Parte Original  
**2-456403-6-AG**

Descripción  
**CRIMPER**

# CRIMPER



No. Tooling Manufacturing  
**120-D-3692**

No. Parte Original  
**D-3692**

Descripción  
**4510 Punch**

No. Tooling Manufacturing  
**120-4-456403-2-AG**

No. Parte Original  
**4-456403-2-AG**

Descripción  
**CRIMPER**



No. Tooling Manufacturing  
**1205-456405-3-AF**

No. Parte Original  
**5-456405-3-AF**

Descripción  
**CRIMPER**

No. Tooling Manufacturing  
**120-6344614-06**

No. Parte Original  
**6344614-06**

Descripción  
**CRIMPER**



No. Tooling Manufacturing  
**120-D-4330**

No. Parte Original  
**D-4330**

Descripción  
**CRIMPER**

# CRIMPER



No. Tooling Manufacturing  
**120-10-4565**

No. Parte Original  
**10-4565**

Descripción  
**CRIMPER**

No. Tooling Manufacturing  
**120-20-4565**

No. Parte Original  
**20-4565**

Descripción  
**CRIMPER**



No. Tooling Manufacturing  
**120-10-4128**

No. Parte Original  
**10-4128**

Descripción  
**CRIMPER**

No. Tooling Manufacturing  
**120-20-4128**

No. Parte Original  
**20-4128**

Descripción  
**CRIMPER**



No. Tooling Manufacturing  
**120-10-4583-00**

No. Parte Original  
**10-4583-00**

Descripción  
**CRIMPER**

# CRIMPER



No. Tooling Manufacturing  
**120-1-456134-4-AZ**

No. Parte Original  
**1-456134-4-AZ**

Descripción  
**CRIMPER**

No. Tooling Manufacturing  
**120-2-683453-0-BK**

No. Parte Original  
**2-683453-0-BK**

Descripción  
**CRIMPER**



No. Tooling Manufacturing  
**120-634650002  
REV.C**

No. Parte Original  
**634650002  
REV.C**

Descripción  
**CRIMPER**

No. Tooling Manufacturing  
**120-CD-800-1**

No. Parte Original  
**CD-800-1**

Descripción  
**CRIMPER**



No. Tooling Manufacturing  
**120-CD-800-C-1**

No. Parte Original  
**CD-800-C-1**

Descripción  
**CRIMPER**

# CRIMPER



No. Tooling Manufacturing  
**120-1.5 X 1.3  
F5U-5833-2**

No. Parte Original  
**1.5 X 1.3  
F5U-5833-2**

Descripción  
**CRIMPER**

No. Tooling Manufacturing  
**120-1633966-7-B**

No. Parte Original  
**1633966-7-B**

Descripción  
**CRIMPER**



No. Tooling Manufacturing  
**1201-456402-6-AE**

No. Parte Original  
**1-456402-6-AE**

Descripción  
**CRIMPER**

No. Tooling Manufacturing  
**120-9-456134-3-BZ**

No. Parte Original  
**9-456134-3-BZ**

Descripción  
**CRIMPER**



No. Tooling Manufacturing  
**120-1-456403-5-P**

No. Parte Original  
**1-456403-5-P**

Descripción  
**CRIMPER**

# CRIMPER



No. Tooling Manufacturing  
**120-2-1633730-5-C**

No. Parte Original  
**2-1633730-5-C**

Descripción  
**CRIMPER**

No. Tooling Manufacturing  
**120-1-1633730-9-C**

No. Parte Original  
**1-1633730-9-C**

Descripción  
**CRIMPER**



No. Tooling Manufacturing  
**120-467342-3-H**

No. Parte Original  
**467342-3-H**

Descripción  
**CRIMPER**

No. Tooling Manufacturing  
**120-6-1633965-4-F**

No. Parte Original  
**6-1633965-4-F**

Descripción  
**CRIMPER**



No. Tooling Manufacturing  
**120-28464-71**

No. Parte Original  
**28464-71**

Descripción  
**CRIMPER**

# CRIMPER



No. Tooling Manufacturing  
**120-28464-72**

No. Parte Original  
**28464-72**

Descripción  
**CRIMPER**

No. Tooling Manufacturing  
**120-11-18-4108**  
**REV.G**

No. Parte Original  
**11-18-4108**  
**REV.G**

Descripción  
**CRIMPER**



No. Tooling Manufacturing  
**120-634570037**  
**REV.**

No. Parte Original  
**634570037**  
**REV.**

Descripción  
**CRIMPER**

No. Tooling Manufacturing  
**120-456407-5-M.**

No. Parte Original  
**456407-5-M.**

Descripción  
**CRIMPER**



No. Tooling Manufacturing  
**120-2-456409-8-U**

No. Parte Original  
**2-456409-8-U**

Descripción  
**CRIMPER**

# CRIMPER



No. Parte Compatible  
**120-4-1333281-1-K**

No. Parte Original  
**4-1333281-1-K**

Descripción  
**CRIMPER**

No. Parte Compatible  
**120-6344614-06**  
**REV.F**  
Descripción  
**CRIMPER**

No. Parte Original  
**6344614-06**  
**REV.F**



No. Parte Compatible  
**120-6344410-04**  
**REV.G**

No. Parte Original  
**6344410-04**  
**REV.G**

Descripción  
**CRIMPER**



No. Parte Compatible  
**120-1803364-2-B.**

No. Parte Original  
**1803364-2-B.**

Descripción  
**CRIMPER**



No. Parte Compatible  
**120-00269-345-CP**

No. Parte Original  
**00269-345-CP**

Descripción  
**CRIMPER**



# CRIMPER



No. Parte Compatible  
**120-61863-1**

No. Parte Original  
**61863-1**

Descripción  
**CRIMPER**

No. Parte Compatible  
**120-8-1633588-1-Z.**

No. Parte Original  
**8-1633588-1-Z.**

Descripción  
**CRIMPER**



No. Parte Compatible  
**120-456134-5-BZ.**

No. Parte Original  
**456134-5-BZ.**

Descripción  
**CRIMPER**

No. Parte Compatible  
**120-2-456134-9-BZ.**

No. Parte Original  
**2-456134-9-BZ.**

Descripción  
**CRIMPER**



No. Parte Compatible  
**120-2-456402-4-UA.**

No. Parte Original  
**2-456402-4-UA.**

Descripción  
**CRIMPER**

# CRIMPER



No. Parte Compatible  
**120-M21-4182-1000**  
**991464474**  
Descripción

No. Parte Original  
**M21-4182-1000**  
**991464474**

**CRIMPER**

No. Parte Compatible  
**120-M21-4182-1010**  
**991452680**

Descripción  
**CRIMPER**

No. Parte Original  
**M21-4182-1010**  
**991452680**



No. Parte Compatible  
**120-456411-3 REV.D**

Descripción  
**CRIMPER**

No. Parte Original  
**456411-3 REV.D**

No. Parte Compatible  
**120-6344414-21**  
**REV.E**

Descripción  
**CRIMPER**

No. Parte Original  
**6344414-21**  
**REV.E**



No. Parte Compatible  
**120-634541302**  
**REV.D (181415)**  
Descripción

**CRIMPER**

No. Parte Original  
**634541302**  
**REV.D (181415)**

# CRIMPER



No. Parte Compatible  
**120-634571004**  
REV.D  
Descripción  
**CRIMPER**

No. Parte Original  
**634571004**  
REV.D

No. Parte Compatible  
**120-3-1633730-2-C.**

No. Parte Original  
**3-1633730-2-C.**

Descripción  
**FORMADOR**



No. Parte Compatible  
**120-103K4353**

No. Parte Original  
**103K4353**

Descripción  
**CRIMPER**

No. Parte Compatible  
**120-20.98 1670146**  
1.55.26

No. Parte Original  
**20.98 1670146**  
1.55.26

Descripción  
**CRIMPER**



No. Parte Compatible  
**120-20.98 964274**  
20.30

No. Parte Original  
**20.98 964274**  
20.30

Descripción  
**CRIMPER.**

# CRIMPER



No. Tooling Manufacturing

120-20.99 1670146 -R  
32.35

No. Parte Original

20.99 1670146 -R  
32.35

Descripción  
**CRIMPER**

No. Parte Compatible

120-69872

No. Parte Original

69872

Descripción

**CRIMPER**



No. Parte Compatible

120-20.9896427420.30

No. Parte Original

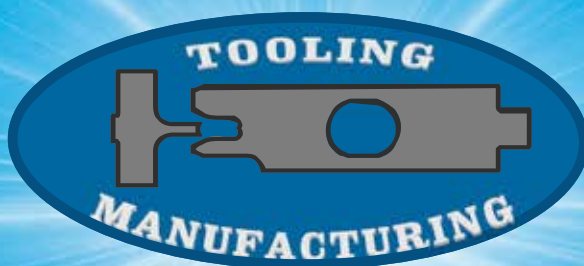
20.9896427420.30

Descripción

**CRIMPER**



# “Precisión que impulsa tu productividad”



(631) 31-5-86-16



(631) 115-34-24



[rbqmaquinados@tooling-manufacturing.com](mailto:rbqmaquinados@tooling-manufacturing.com)



[tooling-manufacturing.com](http://tooling-manufacturing.com)



TOOLING MANUFACTURING



Tooling manufacturing.

