



# CATALOGO 2026



(631) 31-5-86-16



(631) 115-34-24



stockparts@tooling-manufacturing.com



tooling-manufacturing.com



TOOLING MANUFACTURING



Tooling manufacturing.



No. Tooling Manufacturing

**120-20.96**

**0101500471**

Descripción

**ANVIL**

No. Parte Original

**20.96**

**0101500471**

**1.85.21**

No. Tooling Manufacturing

**120-20.96**

**010160004 22.29**

Descripción

**ANVIL**

No. Parte Original

**20.96**

**010160004**

**22.29**



No. Tooling Manufacturing

**120-20.98 010160004**

**20.32-15GR**

Descripción

**CRIMPER**

No. Parte Original

**20.98**

**010160004**

**20.32-15GR**

No. Tooling Manufacturing

**120-20.99**

**010160004-R 30.32**

Descripción

**CRIMPER WIRE**

No. Parte Original

**20.99**

**010160004-R**

**30.32**



No. Tooling Manufacturing

**120-1-1633665-9-R**

Descripción

**ANVIL**

No. Parte Original

**1-1633665-9-R**



No. Tooling Manufacturing  
**120-30-4329**

No. Parte Original  
**30-4329**

Descripción  
**ANVIL**

---

No. Tooling Manufacturing  
**120-D-4345**

No. Parte Original  
**D-4345**

Descripción  
**FORMADOR**



No. Tooling Manufacturing  
**120-10-4345**

No. Parte Original  
**10-4345**

Descripción  
**CRIMPER**

---

No. Tooling Manufacturing  
**120-10-4330**

No. Parte Original  
**10-4330**

Descripción  
**CRIMPER**



No. Tooling Manufacturing  
**120-1-456402-5-AU**

No. Parte Original  
**1-456402-5-AU**

Descripción  
**CRIMPER (1705)**

---



No. Tooling Manufacturing  
**120-30-4345**

No. Parte Original  
**30-4345**

Descripción  
**ANVIL**

No. Tooling Manufacturing  
**120-3-662183-1-P**

No. Parte Original  
**3-662183-1-P**

Descripción  
**ANVIL COMBINACION**



No. Tooling Manufacturing  
**120-5-456135-7-BW**

No. Parte Original  
**5-456135-7-BW**

Descripción  
**FORMADOR (1637)**

No. Tooling Manufacturing  
**120-2-683454-5-AM**

No. Parte Original  
**2-683454-5-AM**

Descripción  
**FORMADOR (0447)**



No. Tooling Manufacturing  
**120-11-18-4076**

No. Parte Original  
**11-18-4076**

Descripción  
**CRIMPER  
(REV.GDDM2/19/15)**



No. Tooling Manufacturing  
**120-10-4329**

No. Parte Original  
**10-4329**

Descripción  
**CRIMPER**

No. Tooling Manufacturing  
**120-1118-4078F**

No. Parte Original  
**1118-4078F**

Descripción  
**120-1-**



No. Tooling Manufacturing  
**120-6346400-02**

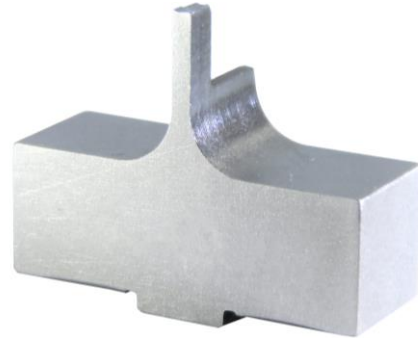
No. Parte Original  
**6346400-02**

Descripción  
**ANVIL**

No. Tooling Manufacturing  
**120-30-4226**

No. Parte Original  
**30-4226**

Descripción  
**ANVIL**



No. Tooling Manufacturing  
**120-10-4226**

No. Parte Original  
**10-4226**

Descripción  
**CRIMPER**



No. Tooling Manufacturing  
**120-PT13870**

No. Parte Original  
**PT13870**

Descripción  
**ANVIL**

---

No. Tooling Manufacturing  
**120-4-1633620-9-AG**

No. Parte Original  
**4-1633620-9-AG**

Descripción  
**ANVIL**



No. Tooling Manufacturing  
**120-63443-0012D**

No. Parte Original  
**63443-0012D**

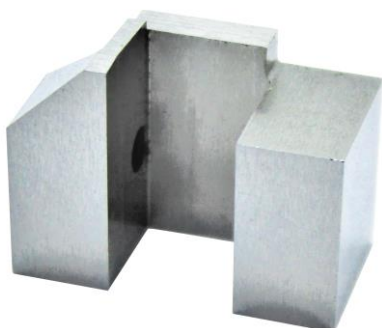
Descripción  
**CAJA P/CORTADOR**

---

No. Tooling Manufacturing  
**120-APP-111**

No. Parte Original  
**APP-111**

Descripción  
**CUT-OFF FLOATING**



No. Tooling Manufacturing  
**120-APP-110**

No. Parte Original  
**APP-110**

Descripción  
**CUT-OFF HOLDER**



No. Tooling Manufacturing  
**120-10-4328**

No. Parte Original  
**10-4328**

Descripción  
**CRIMPER**

No. Tooling Manufacturing  
**120-30-4328**

No. Parte Original  
**30-4328**

Descripción  
**ANVIL**



No. Tooling Manufacturing  
**120-20-4328**

No. Parte Original  
**20-4328**

Descripción  
**CRIMPER**

No. Tooling Manufacturing  
**120-5-456134-4-BZ**

No. Parte Original  
**5-456134-4-BZ**

Descripción  
**CRIMPER (1541)**



No. Tooling Manufacturing  
**120-401151**

No. Parte Original  
**401151**

Descripción  
**CONTRA NAVAJA BOZWANG  
(SET DE 2 PCS)**



No. Tooling Manufacturing  
**120-510.0017**

No. Parte Original  
**510.0017**

Descripción  
**CUT OFF**

No. Tooling Manufacturing  
**120-1-803653-1**

No. Parte Original  
**1-803653-1**

Descripción  
**ANVIL**



No. Tooling Manufacturing  
**120-20.96**

No. Parte Original  
**20.96**

**(010150046)**

**(010150046)**

**16.23**  
Descripción  
**ANVIL**

**16.23**

No. Tooling Manufacturing  
**120-20.96(010250010)**  
**2.75.39**

No. Parte Original  
**20.96(010250010)**  
**2.75.39**

Descripción  
**ANVIL**



No. Tooling Manufacturing  
**120-20.99**

No. Parte Original

**(010150046-R)**

**20.99(010150046-R)**

**23.30**

**23.30**

Descripción  
**FORMADOR**



No. Tooling Manufacturing  
**120-20.99**  
**(010250010-R-)**  
**40.32**  
Descripción  
**FORMADOR**

No. Parte Original  
**20.99 (010250010-R-)**  
**40.32**

No. Tooling Manufacturing  
**120-20.98**  
**(010250010)**  
**27.32-12º**  
Descripción  
**CRIMPER**

No. Parte Original  
**20.98**  
**(010250010)**  
**27.32-12º**



No. Tooling Manufacturing  
**120-20.98**  
**(010150047)**  
**18.30-12º**  
Descripción  
**CRIMPER**

No. Parte Original  
**20.98**  
**(010150047)**  
**18.30-12º**

No. Tooling Manufacturing  
**120-2-1633730-7-C**  
  
Descripción  
**CRIMPER (1626)**

No. Parte Original  
**2-1633730-7-C**



No. Tooling Manufacturing  
**120-3-456402-1-AE**  
  
Descripción  
**ANVIL**

No. Parte Original  
**3-456402-1-AE**



No. Tooling Manufacturing  
**120-1633966-6-A**

No. Parte Original  
**1633966-6-A**

Descripción  
**FORMADOR (1526)**

No. Tooling Manufacturing  
**120-2119784-5-E**

No. Parte Original  
**2119784-5-E**

Descripción  
**FORMADOR (1408)**



No. Tooling Manufacturing  
**120-1338701-1-R**

No. Parte Original  
**1338701-1-R**

Descripción  
**ANVIL**

No. Tooling Manufacturing  
**120-4-1633139-8-BY**

No. Parte Original  
**4-1633139-8-BY**

Descripción  
**ANVIL**



No. Tooling Manufacturing  
**120-2-1633730-4-C**

No. Parte Original  
**2-1633730-4-C**

Descripción  
**CRIMPER (1646)**



No. Tooling Manufacturing  
**120-20-4329**

No. Parte Original  
**20-4329**

Descripción  
**FORMADOR**

No. Tooling Manufacturing  
**120-30-4330**

No. Parte Original  
**30-4330**

Descripción  
**ANVIL**



No. Tooling Manufacturing  
**120-510.0021**

No. Parte Original  
**510.0021**

Descripción  
**NAVAJA DESPOJE**

No. Tooling Manufacturing  
**120-1-456135-7-BW**

No. Parte Original  
**1-456135-7-BW**

Descripción  
**CRIMPER INSULACION**



No. Tooling Manufacturing  
**120-63282409 C.P. 99014**

No. Parte Original  
**63282409 C.P. 99014**

Descripción  
**FORMADOR**



No. Tooling Manufacturing  
**120-63282421**  
**C.P. 99014**

No. Parte Original  
**63282421**  
**C.P. 99014**

Descripción  
**ANVIL**

No. Tooling Manufacturing  
**120-4B1660803**  
**191290-2650**

Descripción  
**FORMADOR**

No. Parte Original  
**4B1660803**  
**191290-2650**



No. Tooling Manufacturing  
**120-4B1660802**  
**192990-2650**

No. Parte Original  
**4B1660802**  
**192990-2650**

Descripción  
**ANVIL**

No. Tooling Manufacturing  
**120-4B1660802**  
**SM16M1D70**

Descripción  
**ANVIL**

No. Parte Original  
**4B1660802**  
**SM16M1D70**



No. Tooling Manufacturing  
**120-4B1660804**  
**192990-2650**  
Descripción  
**ANVIL**

No. Parte Original  
**4B1660804**  
**192990-2650**



No. Tooling Manufacturing  
**120-2-456135-4**

No. Parte Original  
**2-456135-4**

Descripción  
**CRIMPER**

No. Tooling Manufacturing  
**120-4B1660801**

No. Parte Original  
**4B1660801**

Descripción  
**FORMADOR**



No. Tooling Manufacturing  
**120-4B1660701/  
SM16M1D70**

No. Parte Original  
**4B1660701/  
SM16M1D70**

Descripción  
**FORMADOR**

No. Tooling Manufacturing  
**120-4B1660702  
/SM16M1D70**

No. Parte Original  
**4B1660702  
/SM16M1D70**

Descripción  
**ANVIL**



No. Tooling Manufacturing  
**120-4-456402-5**

No. Parte Original  
**4-456402-5**

Descripción  
**CRIMPER**



No. Tooling Manufacturing  
**120-402576**

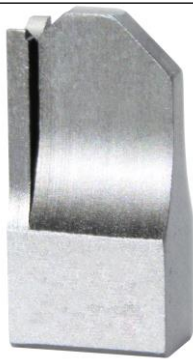
No. Parte Original  
**402576**

Descripción  
**SAW BLADE Ø3.0  
(SET DE DOS PCS**

No. Tooling Manufacturing  
**120-805887-3-C**

No. Parte Original  
**805887-3-C**

Descripción  
**ANVIL**



No. Tooling Manufacturing  
**120-458834-9-AV**

No. Parte Original  
**458834-9-AV**

Descripción  
**ANVIL**

No. Tooling Manufacturing  
**120-456406-2-D**

No. Parte Original  
**456406-2-D**

Descripción  
**CRIMPER**



No. Tooling Manufacturing  
**120-3-456135-0**

No. Parte Original  
**3-456135-0 REV S**

**REV S**  
Descripción  
**ANVIL**



No. Tooling Manufacturing  
**120-2-456134-5-AZ.**

No. Parte Original  
**2-456134-5-AZ.**

**0335**  
Descripción  
**CRIMPER**

**0335**

No. Tooling Manufacturing  
**120-MFX-3965**

No. Parte Original  
**MFX-3965**

Descripción  
**CUTTER FLOATING**



No. Tooling Manufacturing  
**120-SINE-019**

No. Parte Original  
**SINE-019**

Descripción  
**CUTTER FLOATING**

No. Tooling Manufacturing  
**120-SINE-021**

No. Parte Original  
**SINE-021**

Descripción  
**CUTTER FLOATING**



No. Tooling Manufacturing  
**120-416077**

No. Parte Original  
**416077**

**Ø 14.0**  
Descripción

**Ø 14.0**

**SAW BLADE**  
**SCHLEUNIGER SET**  
**DOS PCS**



No. Tooling Manufacturing  
**120-95-3692A**

No. Parte Original  
**95-3692A**

Descripción  
**CUTTER FLOATING**

No. Tooling Manufacturing  
**120-4-456406-1-V**  
**(0441)**

No. Parte Original  
**4-456406-1-V**  
**(0441)**

Descripción  
**CRIMPER**



No. Tooling Manufacturing  
**120-20-4226**

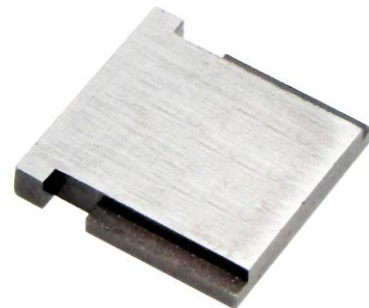
No. Parte Original  
**20-4226**

Descripción  
**CRIMPER**

No. Tooling Manufacturing  
**120-C78010**

No. Parte Original  
**C78010**

Descripción  
**BASE PARA EL  
RESORTE DEL  
HOLDER#C73120**



No. Tooling Manufacturing  
**120-C73120**

No. Parte Original  
**C73120**

Descripción  
**HOLDER**



No. Tooling Manufacturing  
**120-C74370**

No. Parte Original  
**C74370**

Descripción  
**CUTTER FLOATING**

No. Tooling Manufacturing  
**120-63641**  
**(U16T2)**

Descripción  
**CRIMPER**

No. Parte Original  
**63641 (U16T2)**



No. Tooling Manufacturing  
**120-64155**  
**(B16R2)**

Descripción  
**CRIMPER**

No. Parte Original  
**64155 (B16R2)**

No. Tooling Manufacturing  
**120-C75790**  
**(B17M7)**

Descripción  
**ANVIL**

No. Parte Original  
**C75790 (B17M7)**



No. Tooling Manufacturing  
**120-C76420**  
**(B17L7)**

Descripción  
**ANVIL**

No. Parte Original  
**C76420 (B17L7)**



No. Tooling Manufacturing  
**120-1118-4468/C**  
**(D.S.12/15)**

No. Parte Original  
**1118-4468/C**  
**(D.S.12/15)**

Descripción  
**CUTTER**

No. Tooling Manufacturing  
**120-1118-4009J**  
**(D.S. 1/16)**

No. Parte Original  
**1118-4009J**  
**(D.S. 1/16)**

Descripción  
**CUTTER**



No. Tooling Manufacturing  
**120-1017-462-0200**  
**REV F**

No. Parte Original  
**1017-462-0200**  
**REV F**

Descripción  
**CUTTER FLOATING**

No. Tooling Manufacturing  
**120-1017-211-0200**  
**REV C**

No. Parte Original  
**1017-211-0200**  
**REV C**

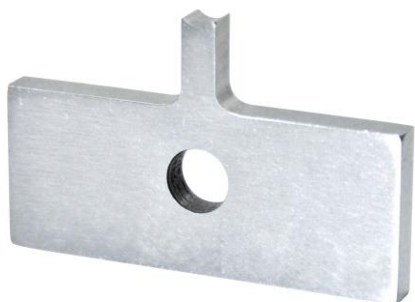
Descripción  
**FRONT**



No. Tooling Manufacturing  
**120-1017-002-0200**  
**REV B**

No. Parte Original  
**1017-002-0200**  
**REV B**

Descripción  
**FRONT**



No. Tooling Manufacturing  
**120-1017-311-0200**

No. Parte Original  
**1017-311-0200**

Descripción  
**ANVIL**

No. Tooling Manufacturing  
**120-1017-101-0200**

No. Parte Original  
**1017-101-0200**

**REV C**

**REV C**

Descripción  
**ANVIL**



No. Tooling Manufacturing  
**120-78282309**

No. Parte Original  
**78282309**

**(DJ454A)**

**(DJ454A)**

Descripción  
**CRIMPER.**

No. Tooling Manufacturing  
**120-416073**

No. Parte Original  
**416073**

Descripción  
**NAVAJAS Ø 11.0 MM**  
**SET DE 2 PCS.**



No. Tooling Manufacturing  
**120-416099**

No. Parte Original  
**416099**

Descripción  
**NAVAJAS Ø 5 MM**  
**SET 2 PCS.**



No. Tooling Manufacturing  
**120-662389409**  
**EL-12124582**  
**EL-12124580**  
**10.05.10**  
Descripción  
**CRIMPER**

No. Parte Original  
**662389409**  
**EL-12124582**  
**EL-12124580**  
**10.05.10**

No. Tooling Manufacturing  
**120-662389408**  
**EL-12124582**  
**EL-12124580**  
**10.05.07**  
Descripción  
**CRIMPER**

No. Parte Original  
**662389408**  
**EL-12124582**  
**EL-12124580**  
**10.05.07**



No. Tooling Manufacturing  
**120-SINE-005 A**  
Descripción  
**CUTTER HOUSING**

No. Parte Original  
**SINE-005 A**

No. Tooling Manufacturing  
**120-SINE-005**  
Descripción  
**CUTTER FLOATING**

No. Parte Original  
**SINE-005**



No. Tooling Manufacturing  
**120-SPACER-005 A**  
**(Ø OD .487 ID.261**  
**LONG .170)**  
Descripción  
**SPACER**

No. Parte Original  
**SPACER-005 A**  
**(Ø OD .487 ID.261**  
**LONG .170)**



No. Tooling Manufacturing  
**120-662389421**  
**EL-12124582**  
**EL 12124580**  
Descripción  
**ANVIL**

No. Parte Original  
**662389421**  
**EL-12124582**  
**EL 12124580**  
**10.05.07**

No. Tooling Manufacturing  
**120-1-662389422**  
**EL-12124583**  
**EL 12124580 10.05.24**  
Descripción  
**ANVIL**

No. Parte Original  
**662389422**  
**EL-12124583**  
**EL 12124580**  
**10.05.24**

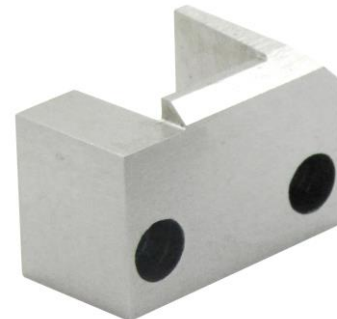


No. Tooling Manufacturing  
**120-662389309**  
**EL-12020801**  
**10.05.18**  
Descripción  
**CRIMPER**

No. Parte Original  
**662389309**  
**EL-12020801**  
**10.05.18**

No. Tooling Manufacturing  
**120-SINE-004 A**  
Descripción  
**CUTTER HOUSING**

No. Parte Original  
**SINE-004 A**



No. Tooling Manufacturing  
**120-SINE-004**  
Descripción  
**CUTTER FLOATING**

No. Parte Original  
**SINE-004**



No. Tooling Manufacturing  
**120-662389321**

No. Parte Original  
**662389321**

Descripción  
**ANVIL**

No. Tooling Manufacturing  
**120-662389322**  
**EL-12020801**  
**10.05.24**  
Descripción  
**ANVIL**

No. Parte Original  
**662389322**  
**EL-12020801**  
**10.05.24**



No. Tooling Manufacturing  
**120-1-456401-6-S**

No. Parte Original  
**1-456401-6-S**

Descripción  
**CRIMPER WIRE**

No. Tooling Manufacturing  
**120-1-456401-7-S**

No. Parte Original  
**1-456401-7-S**

Descripción  
**CRIMPER**



No. Tooling Manufacturing  
**120-1-662182-4-L**

No. Parte Original  
**1-662182-4-L**

Descripción  
**ANVIL**



No. Tooling Manufacturing  
**120-568176-7-AC**

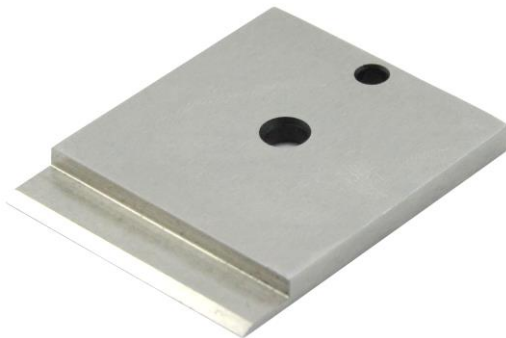
No. Parte Original  
**568176-7-AC**

Descripción  
**CRIMPER WIRE**

No. Tooling Manufacturing  
**120-78282321**

No. Parte Original  
**78282321**

Descripción  
**ANVIL CONBINADO**



No. Tooling Manufacturing  
**120-134342**

No. Parte Original  
**134342**

Descripción  
**BLADE SHEAR**

No. Tooling Manufacturing  
**120-INSERT 001**

No. Parte Original  
**INSERT 001**

Descripción  
**PIN INSERTADOR**



No. Tooling Manufacturing  
**120-402586**

No. Parte Original  
**402586**

Descripción  
**SET 2 NAVAJAS V  
PARA US-2600**



No. Tooling Manufacturing  
**120-CHS-A066-01**

No. Parte Original  
**CHS-A066-01**

Descripción  
**CRIMPER 349301-001**

No. Tooling Manufacturing  
**120-CHS-A067-02**

No. Parte Original  
**CHS-A067-02**

Descripción  
**FORMADOR  
349302-002**



No. Tooling Manufacturing  
**120-CHS-A067-05A**

No. Parte Original  
**CHS-A067-05A**

Descripción  
**ANVIL 349302-003**

No. Tooling Manufacturing  
**120-CHS-A067-05B**

No. Parte Original  
**CHS-A067-05B**

Descripción  
**ANVIL 349302-004**



No. Tooling Manufacturing  
**120-CHS-A066-02**

No. Parte Original  
**CHS-A066-02**

Descripción  
**FORMADOR  
349301-002**



No. Tooling Manufacturing  
**120-CHS-A066-05A**  
**349301-003**  
Descripción  
**ANVIL**

No. Parte Original  
**CHS-A066-05A**  
**349301-003**

No. Tooling Manufacturing  
**120-CHS-A066-05B**

No. Parte Original  
**CHS-A066-05B**

Descripción  
**ANVIL 349301-004**



No. Tooling Manufacturing  
**120-2.1X2.4R**

No. Parte Original  
**2.1X2.4R**

Descripción  
**PUNCH DE  
INSULACION**

No. Tooling Manufacturing  
**120-2.1X2.4**

No. Parte Original  
**2.1X2.4**

Descripción  
**ANVIL DE  
INSULACION**



No. Tooling Manufacturing  
**120-3.2X1.7**

No. Parte Original  
**3.2X1.7**

Descripción  
**PUNCH DE  
FILAMENTOS**



No. Tooling Manufacturing  
**120-5.0X1.7**

No. Parte Original  
**5.0X1.7**

Descripción  
**ANVIL**

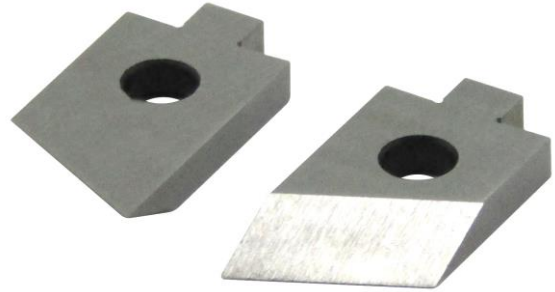
---

No. Tooling Manufacturing

**120-R-WJAPS**

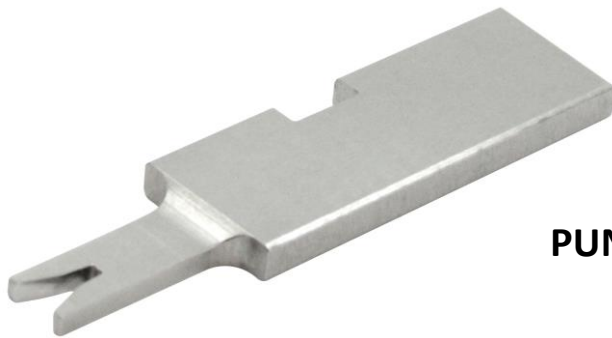
No. Parte Original

**R-WJAPS**



Descripción  
**NAVAJA SET DE 2 PCS.**

---



No. Tooling Manufacturing  
**120-6344416-09**

No. Parte Original  
**6344416-09**

Descripción  
**PUNCH DE FILAMENTOS**

---

No. Tooling Manufacturing  
**120-6344516-46**

No. Parte Original  
**6344516-46**

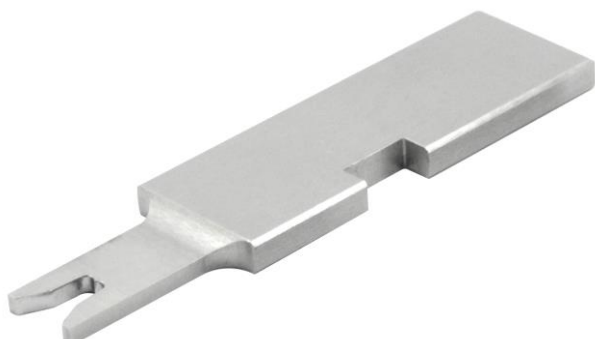
Descripción  
**ANVIL**



No. Tooling Manufacturing  
**120-6344532-11**

No. Parte Original  
**6344532-11**

Descripción  
**ANVIL**



No. Tooling Manufacturing  
**120-6344632-08**

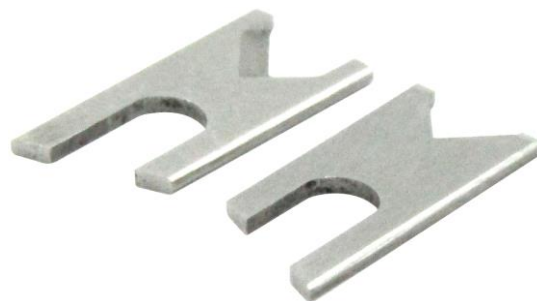
No. Parte Original  
**6344632-08**

Descripción  
**PUNCH  
INSULACION**

No. Tooling Manufacturing  
**120-04530**

No. Parte Original  
**04530**

Descripción  
**NVAJAS SCHLEUNGER  
2015 SET DE 2 PCS.**



No. Tooling Manufacturing  
**120-402574**

No. Parte Original  
**402574**

Descripción  
**NAVAJAS 2.0mm  
SET DE 2 PCS.**

No. Tooling Manufacturing  
**120-WA27F**

No. Parte Original  
**WA27F**

Descripción  
**WA27F MORDAZA  
P/MAQUINA WA27F**



No. Tooling Manufacturing  
**120-INSERT 002**

No. Parte Original  
**INSERT 002**

Descripción  
**PIN INSERTADOR**



No. Tooling Manufacturing  
**120-INSERT 003**

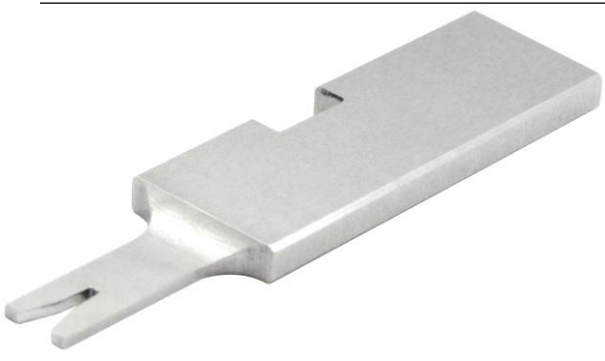
No. Parte Original  
**INSERT 003**

Descripción  
**PIN INSERTADOR 003**

No. Tooling Manufacturing  
**120-6344300-02**

No. Parte Original  
**6344300-02**

Descripción  
**CUTTER FLOATING**



No. Tooling Manufacturing  
**120-6344412-07**

No. Parte Original  
**6344412-07**

Descripción  
**CRIMPER**

No. Tooling Manufacturing  
**120-6344512-17**

No. Parte Original  
**6344512-17**

Descripción  
**ANVIL**



No. Tooling Manufacturing  
**120-6344515-03**

No. Parte Original  
**6344515-03**

Descripción  
**ANVIL**



No. Tooling Manufacturing  
**120-6344615-10**

No. Parte Original  
**6344615-10**

Descripción  
**CRIMPER**

No. Tooling Manufacturing  
**120-11-18-4007**

No. Parte Original  
**11-18-4007**

Descripción  
**PUNCH INSULACION**



No. Tooling Manufacturing  
**120-11-18-4011**

No. Parte Original  
**11-18-4011**

Descripción  
**ANVIL**

No. Tooling Manufacturing  
**120-11-18-4077**

No. Parte Original  
**11-18-4077**

Descripción  
**PUNCH INSULACION**



No. Tooling Manufacturing  
**120-11-18-5258**

No. Parte Original  
**11-18-5258**

Descripción  
**PUNCH INSULACION**



No. Tooling Manufacturing  
**120-11-18-5259**

No. Parte Original  
**11-18-5259**

Descripción  
**ANVIL**

No. Tooling Manufacturing  
**120-1633962-3-D**

No. Parte Original  
**1633962-3-D**

Descripción  
**CRIMPER**



No. Tooling Manufacturing  
**120-1803095-1-E**

No. Parte Original  
**1803095-1-E**

Descripción  
**CUTTER FLOATING**

No. Tooling Manufacturing  
**120-2119805-1-P**

No. Parte Original  
**2119805-1-P**

Descripción  
**HOUSING**



No. Tooling Manufacturing  
**120-10-4432**

No. Parte Original  
**10-4432**

Descripción  
**CRIMPER DE  
FILAMENTOS**



No. Tooling Manufacturing  
**120-20-4432**

No. Parte Original  
**20-4432**

Descripción  
**CRIMPER**

No. Tooling Manufacturing  
**120-3-456406-3-V**

No. Parte Original  
**3-456406-3-V**

Descripción  
**CRIMPER**



No. Tooling Manufacturing  
**120-MTZ151018**

No. Parte Original  
**MTZ151018**

Descripción  
**NAVAJAS 9400 SET 2 PCS.**

No. Tooling Manufacturing  
**120-WA22**

No. Parte Original  
**WA22**

Descripción  
**MORDAZA WA22**



No. Tooling Manufacturing  
**120-WA300**

No. Parte Original  
**WA300**

Descripción  
**MORDAZA WA300**



No. Tooling Manufacturing  
**120-INSERT-004**

No. Parte Original  
**INSERT-004**

Descripción  
**PIN INSERTADOR**

No. Tooling Manufacturing  
**120-418229**

No. Parte Original  
**418229**

Descripción  
**STRIP BLADE V-  
MAQ.US2300 SET 2 PCS.**



No. Tooling Manufacturing  
**120-8-1333205-1-ED**

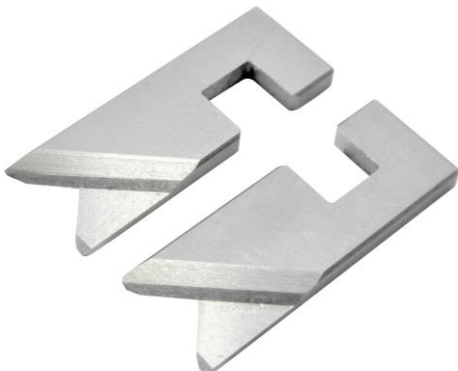
No. Parte Original  
**8-1333205-1-ED**

Descripción  
**ANVIL COMBINACION**

No. Tooling Manufacturing  
**120-30-4432**

No. Parte Original  
**30-4432**

Descripción  
**ANVIL**



No. Tooling Manufacturing  
**120-148952**

No. Parte Original  
**148952**

Descripción  
**NAVAJAS DESPOJADORAS  
ES-100 SET 2 PCS.**



No. Tooling Manufacturing  
**120-1-1333224-1-K**

No. Parte Original  
**1-1333224-1-K**

Descripción  
**ANVIL**

No. Tooling Manufacturing  
**120-13911**

No. Parte Original  
**13911**

Descripción  
**NAVAJA RADIAL US-8300**



No. Tooling Manufacturing  
**120-13910**

No. Parte Original  
**13910**

Descripción  
**NAVAJA AXIAL**

No. Tooling Manufacturing  
**120-DES-001**

No. Parte Original  
**DES-001**

Descripción  
**DESINSERTADORA DE TERMINAL  
RT06164SNH**



No. Tooling Manufacturing  
**120-7-1633609-9-T**

No. Parte Original  
**7-1633609-9-T**

Descripción  
**CRIMPER 1508**



No. Tooling Manufacturing  
**120-1-456400-7-M**

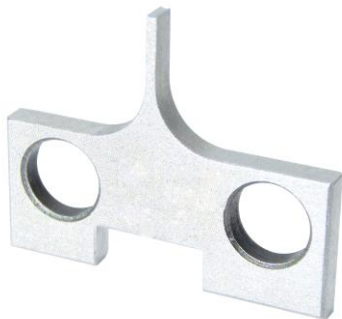
No. Parte Original  
**1-456400-7-M**

Descripción  
**CRIMPER 1832**

No. Tooling Manufacturing  
**120-1633572-9-E**

No. Parte Original  
**1633572-9-E**

Descripción  
**ANVIL**



No. Tooling Manufacturing  
**120-150118**

No. Parte Original  
**150118**

Descripción  
**ANVIL**

No. Tooling Manufacturing  
**120-6344408-02**

No. Parte Original  
**6344408-02**

Descripción  
**REV-G DDM2/23/09 CRIMPER**



No. Tooling Manufacturing  
**120-634540069**

No. Parte Original  
**634540069**

Descripción  
**REV-G DDM2/18/09  
CRIMPER**



No. Tooling Manufacturing  
**120-991463979-N18**

No. Parte Original  
**991463979-N18**

Descripción  
**CRIMPER**

No. Tooling Manufacturing  
**120-WA27-309**

No. Parte Original  
**WA27-309**

Descripción  
**MORDAZA WA27-309**



No. Tooling Manufacturing  
**120-7-2119582-2-J**

No. Parte Original  
**7-2119582-2-J**

Descripción  
**CRIMPER**

No. Tooling Manufacturing  
**120-1-1803293-2-A**

No. Parte Original  
**1-1803293-2-A**

Descripción  
**ANVIL COMBINACION**



No. Tooling Manufacturing  
**120-456409-6-G**

No. Parte Original  
**456409-6-G**

Descripción  
**CRIMPER WIRE**



No. Tooling Manufacturing  
**120-INSER-006**

No. Parte Original  
**INSER-006**

Descripción  
**RTADOR P/CONECTOR  
MC47A47C30E**

No. Tooling Manufacturing  
**120-20-4363**

No. Parte Original  
**20-4363**

Descripción  
**FORMADOR**



No. Tooling Manufacturing  
**120-30-3780-00**

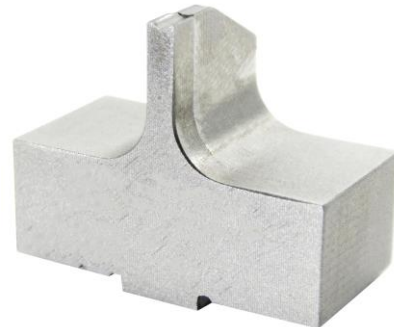
No. Parte Original  
**30-3780-00**

Descripción  
**ANVIL**

No. Tooling Manufacturing  
**120-30-4363**

No. Parte Original  
**30-4363**

Descripción  
**ANVIL COMBINACION**



No. Tooling Manufacturing  
**120-10-3780**

No. Parte Original  
**10-3780**

Descripción  
**CRIMPER**



No. Tooling Manufacturing  
**120-10-4363**

No. Parte Original  
**10-4363**

Descripción  
**CRIMPER**

No. Tooling Manufacturing  
**120-DES-002**

No. Parte Original  
**DES-002**

Descripción  
**DESINSERTADOR**



No. Tooling Manufacturing  
**120-10-2895**

No. Parte Original  
**10-2895**

Descripción  
**CRIMPER WIRE**

No. Tooling Manufacturing  
**120-20-2895-3.53**

No. Parte Original  
**20-2895-3.53**

Descripción  
**CRIMPER INSULACION**



No. Tooling Manufacturing  
**120-30-2895-1**

No. Parte Original  
**30-2895-1**

Descripción  
**ANVIL COMBINACION**



No. Tooling Manufacturing  
**120-APP-111-2895**

No. Parte Original  
**APP-111-2895**

Descripción  
**CUTTER FLOATTING**

No. Tooling Manufacturing  
**120-63821**

No. Parte Original  
**63821**

Descripción  
**CRIMPER DE FILAMENTOS**



No. Tooling Manufacturing  
**120-64671**

No. Parte Original  
**64671**

Descripción  
**CRIMPER  
INSULACION**

No. Tooling Manufacturing  
**120-C75055**

No. Parte Original  
**C75055**

Descripción  
**ANVIL**



No. Tooling Manufacturing  
**120-63108**

No. Parte Original  
**63108**

Descripción  
**CRIMPER WIRE**



No. Tooling Manufacturing  
**120-64565**

No. Parte Original  
**64565**

Descripción  
**CRIMPER  
INSULACION**

No. Tooling Manufacturing  
**120-C75348**

No. Parte Original  
**C75348**

Descripción  
**ANVIL**



No. Tooling Manufacturing  
**120-C76660**

No. Parte Original  
**C76660**

Descripción  
**ANVIL**

No. Tooling Manufacturing  
**120-63510**

No. Parte Original  
**63510**

Descripción  
**CRIMPER DE  
FILAMENTOS**



No. Tooling Manufacturing  
**120-64440**

No. Parte Original  
**64440**

Descripción  
**CRIMPER  
INSULACION**



No. Tooling Manufacturing  
**120-C75720**

No. Parte Original  
**C75720**

Descripción  
**ANVIL**

---

No. Tooling Manufacturing  
**120-C76580**

No. Parte Original  
**C76580**

Descripción  
**ANVIL**



No. Tooling Manufacturing  
**120-1-456405-5**

No. Parte Original  
**1-456405-5**

Descripción  
**CRIMPER DE  
FILAMENTOS**

---

No. Tooling Manufacturing  
**120-662519708**

No. Parte Original  
**662519708**

Descripción  
**CRIMPER**



No. Tooling Manufacturing  
**120-662519709**

No. Parte Original  
**662519709**

Descripción  
**PUNCH DE  
FILAMENTOS**



No. Tooling Manufacturing  
**120-662519721**

No. Parte Original  
**662519721**

Descripción  
**ANVIL DE  
FILAMENTOS**

---

No. Tooling Manufacturing  
**120-662519722**

No. Parte Original  
**662519722**

Descripción  
**ANVIL DE  
INSULACION**



No. Tooling Manufacturing  
**120-20-4450**

No. Parte Original  
**20-4450**

Descripción  
**CRIMPER DE  
INSULACION**

---

No. Tooling Manufacturing  
**120-10-4450**

No. Parte Original  
**10-4450**

Descripción  
**CRIMPER DE  
FILAMENTOS**



---

No. Tooling Manufacturing  
**120-30-4450**

No. Parte Original  
**30-4450**

Descripción  
**ANVIL  
COMBINACION**





No. Tooling Manufacturing  
**120-1-456411-2**

No. Parte Original  
**1-456411-2**

Descripción  
**CRIMPER WIRE**

No. Tooling Manufacturing  
**120-7-690512-4**

No. Parte Original  
**7-690512-4**

Descripción  
**ANVIL COMBINADO**



No. Tooling Manufacturing  
**120-10-4136**

No. Parte Original  
**10-4136**

Descripción  
**CRIMPER WIRE**

No. Tooling Manufacturing  
**120-20-4136**

No. Parte Original  
**20-4136**

Descripción  
**CRIMPER  
FORMADOR**



No. Tooling Manufacturing  
**120-30-4136**

No. Parte Original  
**30-4136**

Descripción  
**ANVIL COMBINACION**



No. Tooling Manufacturing  
**120-AOS-04**

No. Parte Original  
**AOS-04**

Descripción  
**CUTTER BITECH**

---

No. Tooling Manufacturing  
**120-63088221**

No. Parte Original  
**63088221**

Descripción  
**ANVIL FILAMENTOS**



No. Tooling Manufacturing  
**120-63088222**

No. Parte Original  
**63088222**

Descripción  
**ANVIL INSULACION**

---

No. Tooling Manufacturing  
**120-63311408**

No. Parte Original  
**63311408**

Descripción  
**PUNCH DE  
FILAMENTOS**



No. Tooling Manufacturing  
**120-63312009**

No. Parte Original  
**63312009**

Descripción  
**PUNCH DE  
FILAMENTOS**

---



No. Tooling Manufacturing  
**120-CHP-K027-02**

No. Parte Original  
**CHP-K027-02**

Descripción  
**(012901-002)**  
**70505 FORMADOR**

No. Tooling Manufacturing  
**120-CHP-K027-01**

No. Parte Original  
**CHP-K027-01**

Descripción  
**(170511) 012901-001**  
**CRIMPER**



No. Tooling Manufacturing  
**120-CHP-K027-05B**

No. Parte Original  
**CHP-K027-05B**

Descripción  
**(170504) 12901-004**  
**ANVIL**

No. Tooling Manufacturing  
**120-CHP-K027-05A**

No. Parte Original  
**CHP-K027-05A**

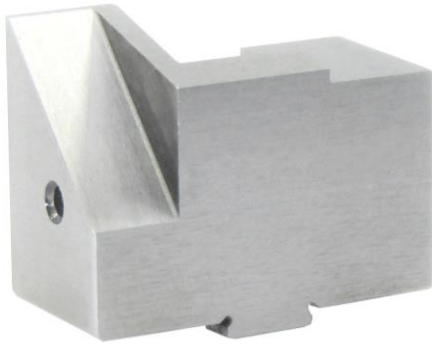
Descripción  
**(170504) 12901-003**  
**ANVIL**



No. Tooling Manufacturing  
**120-60707-18/C**

No. Parte Original  
**60707-18/C**

Descripción  
**HOUSING**



No. Tooling Manufacturing  
**120-60707-19/D**

No. Parte Original  
**60707-19/D**

Descripción  
**HOUSING**

---

No. Tooling Manufacturing  
**120-7163-30G**

No. Parte Original  
**7163-30G**

Descripción  
**CUTTER FLOATING**



No. Tooling Manufacturing  
**120-7163-33**

No. Parte Original  
**7163-33**

Descripción  
**CUTTER FLOATING**

---

No. Tooling Manufacturing  
**120-638200006B**

No. Parte Original  
**638200006B**

Descripción  
**ANVIL**



No. Tooling Manufacturing  
**120-416067**

No. Parte Original  
**416067**

Descripción  
**NAVAJAS 8MM  
SET 2 PCS**



No. Tooling Manufacturing  
**120-416072**

No. Parte Original  
**416072**

Descripción  
**NAVAJAS 10MM  
SET 2 PCS**

No. Tooling Manufacturing  
**120-416074**

No. Parte Original  
**416074**

Descripción  
**NAVAJAS 12MM**



No. Tooling Manufacturing  
**120-10-4457**

No. Parte Original  
**10-4457**

Descripción  
**CRIMPER DE  
FILAMENTOS**

No. Tooling Manufacturing  
**120-20-4457**

No. Parte Original  
**20-4457**

Descripción  
**PUNCH DE  
INSULACION**



No. Tooling Manufacturing  
**120-30-4457**

No. Parte Original  
**30-4457**

Descripción  
**ANVIL  
COMBINACION**



No. Tooling Manufacturing  
**120-662519609**

No. Parte Original  
**662519609**

Descripción  
**PUNCH WIRE**

No. Tooling Manufacturing  
**120-662519621**

No. Parte Original  
**662519621**

Descripción  
**ANVIL WIRE**



No. Tooling Manufacturing  
**120-662519622**

No. Parte Original  
**662519622**

Descripción  
**ANVIL INSULACION**

No. Tooling Manufacturing  
**120-662519608**

No. Parte Original  
**662519608**

Descripción  
**CRIMPER  
INSULACION**



No. Tooling Manufacturing  
**120-11-18-5246**

No. Parte Original  
**11-18-5246**

Descripción  
**REV.D (DDM 1/5/05)**



No. Tooling Manufacturing  
**120-10-3907**

No. Parte Original  
**10-3907**

Descripción  
**APPLITEK**

No. Tooling Manufacturing  
**120-3-854014-2AG**

No. Parte Original  
**3-854014-2AG**

Descripción  
**ANVIL  
COMBINACION**



No. Tooling Manufacturing  
**120-64006**

No. Parte Original  
**64006**

Descripción  
**PUNCH DE FILAMENTOS**

No. Tooling Manufacturing  
**120-C75685**

No. Parte Original  
**C75685**

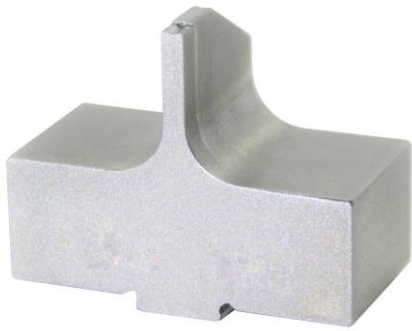
Descripción  
**ANVIL DE FILAMENTOS**



No. Tooling Manufacturing  
**120-11-18-5244-C**

No. Parte Original  
**11-18-5244-C**

Descripción  
**PUNCH DE  
FILAMENTOS**



No. Tooling Manufacturing  
**120-30-3907**

No. Parte Original  
**30-3907**

Descripción  
**ANVIL  
COMBINACION**

No. Tooling Manufacturing  
**120-3-683453-3-AV**

No. Parte Original  
**3-683453-3-AV**

Descripción  
**CRIMPER**



No. Tooling Manufacturing  
**120-3-456404-1-AL**

No. Parte Original  
**3-456404-1-AL**

Descripción  
**CRIMPER**

No. Tooling Manufacturing  
**120-1-1333205-1-EA**

No. Parte Original  
**1-1333205-1-EA**

Descripción  
**ANVIL  
COMBINACION**



No. Tooling Manufacturing  
**120-5-1803016-4**

Descripción  
**PUNCH INSULACION**

No. Parte Original  
**5-1803016-4**



No. Tooling Manufacturing  
**120-8-456406-1**

No. Parte Original  
**8-456406-1**

Descripción  
**CRIMPER WIRE**

No. Tooling Manufacturing  
**120-1338692-2-K**

No. Parte Original  
**1338692-2-K**

Descripción  
**ANVIL  
COMBINACION**



No. Tooling Manufacturing  
**120-2-2119582-4-D**

No. Parte Original  
**2-2119582-4-D**

Descripción  
**CRIMPER  
INSULACION**

No. Tooling Manufacturing  
**120-2-456404-5-AL**

No. Parte Original  
**2-456404-5-AL**

Descripción  
**PUNCH WIRE**



No. Tooling Manufacturing  
**120-6344519-04**

No. Parte Original  
**6344519-04**

Descripción  
**ANVIL**



No. Tooling Manufacturing  
**120-6344519-24**

No. Parte Original  
**6344519-24**

Descripción  
**ANVIL**

No. Tooling Manufacturing  
**120-690514-3-V**

No. Parte Original  
**690514-3-V**

Descripción  
**ANVIL  
COMBINACION**



No. Tooling Manufacturing  
**120-463310-6-F.18**

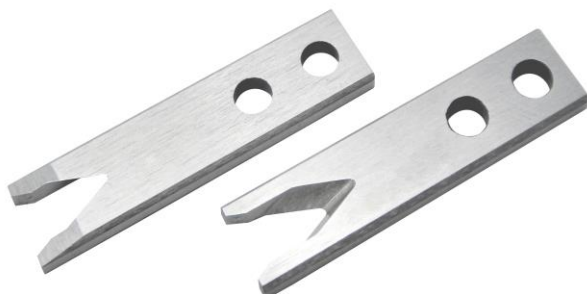
No. Parte Original  
**463310-6-F.18**

Descripción  
**STRIPPER  
(SET DE 2 PCS)**

No. Tooling Manufacturing  
**120-463310-6-F.20**

No. Parte Original  
**463310-6-F.20**

Descripción  
**STRIPPER  
(SET DE 2 PCS)**



No. Tooling Manufacturing  
**120-463310-6-F.22**

No. Parte Original  
**463310-6-F.22**

Descripción  
**STRIPPER  
(SET DE 2 PCS)**



No. Tooling Manufacturing  
**120-463310-6-F.24**

No. Parte Original  
**463310-6-F.24**

Descripción  
**STRIPPER**  
**(SET DE 2 PCS)**

No. Tooling Manufacturing  
**120-463310-6-F.26**

No. Parte Original  
**463310-6-F.26**

Descripción  
**STRIPPER**  
**(SET DE 2 PCS)**



No. Tooling Manufacturing  
**120-463310-6-F.28**

No. Parte Original  
**463310-6-F.28**

Descripción  
**STRIPPER**  
**(SET DE 2 PCS)**

No. Tooling Manufacturing  
**120-6344514-36**

No. Parte Original  
**6344514-36**

Descripción  
**ANVIL DE**  
**FILAMENTOS**



No. Tooling Manufacturing  
**120-6344519-05**

No. Parte Original  
**6344519-05**

Descripción  
**ANVIL DE**  
**INSULACION**



No. Tooling Manufacturing  
**120-11-18-5465**

No. Parte Original  
**11-18-5465**

Descripción  
**CRIMPER**

---

No. Tooling Manufacturing  
**120-11-18-5383-B**

No. Parte Original  
**11-18-5383-B**

Descripción  
**FORMADOR**



No. Tooling Manufacturing  
**120-6344525-35**

No. Parte Original  
**6344525-35**

Descripción  
**ANVIL**

---

No. Tooling Manufacturing  
**120-6344520-43**

No. Parte Original  
**6344520-43**

Descripción  
**ANVIL**



No. Tooling Manufacturing  
**120-638210002**

No. Parte Original  
**638210002**

Descripción  
**ANVIL**



No. Tooling Manufacturing  
**120-CHP-K024-05A**

No. Parte Original  
**CHP-K024-05A**

Descripción  
**ANVIL DE  
FILAMENTOS**

No. Tooling Manufacturing  
**120-CHP-K024-05B**

No. Parte Original  
**CHP-K024-05B**

Descripción  
**ANVIL DE  
INSULACION**



No. Tooling Manufacturing  
**120-CHP-K024-01**

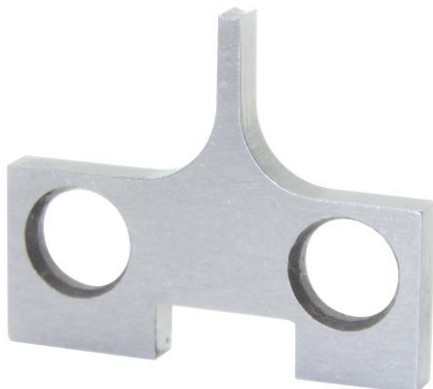
No. Parte Original  
**CHP-K024-01**

Descripción  
**PUNCH DE  
FILAMENTOS**

No. Tooling Manufacturing  
**120-CHP-K024-02**

No. Parte Original  
**CHP-K024-02**

Descripción  
**PUNCH  
INSULACION**



No. Tooling Manufacturing  
**120-6344514-35**

No. Parte Original  
**6344514-35**

Descripción  
**ANVIL**



No. Tooling Manufacturing  
**120-638210004**

No. Parte Original  
**638210004**

Descripción  
**ANVIL**

---

No. Tooling Manufacturing  
**120-30-4510**

No. Parte Original  
**30-4510**

Descripción  
**ANVIL**



No. Tooling Manufacturing  
**120-10-4510**

No. Parte Original  
**10-4510**

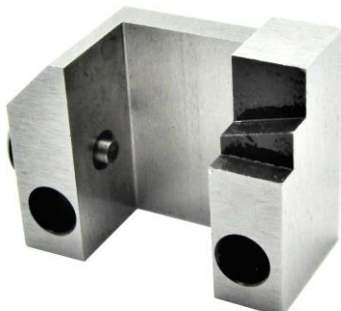
Descripción  
**PUNCH WIRE**

---

No. Tooling Manufacturing  
**120-95-3692**

No. Parte Original  
**95-3692**

Descripción  
**CUTTER FLOATING**



No. Tooling Manufacturing  
**120-90-3692A**

No. Parte Original  
**90-3692A**

Descripción  
**HOUSING**



No. Tooling Manufacturing

No. Parte Original

**120-6344516-30**

**6344516-30**

Descripción  
**ANVIL DE  
FILAMENTOS**

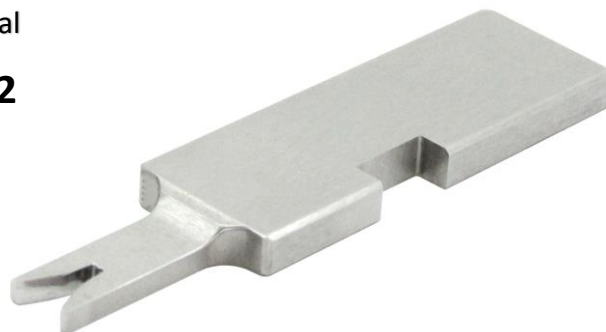
No. Tooling Manufacturing

No. Parte Original

**120-6344616-22**

**6344616-22**

Descripción  
**CRIMPER DE  
FILAMENTOS**



No. Tooling Manufacturing

No. Parte Original

**120-CHS-A067-01**

**CHS-A067-01**

Descripción  
**CRIMPER WIRE**

No. Tooling Manufacturing

No. Parte Original

**120-416080**

**416080**

Descripción  
**NAVAJA 3MM  
9550 SET DE 2 PCS**



No. Tooling Manufacturing

No. Parte Original

**120-416082**

**416082**

Descripción  
**NAVAJA 4MM  
9550 SET DE 2 PCS**



No. Tooling Manufacturing  
**120-416065**

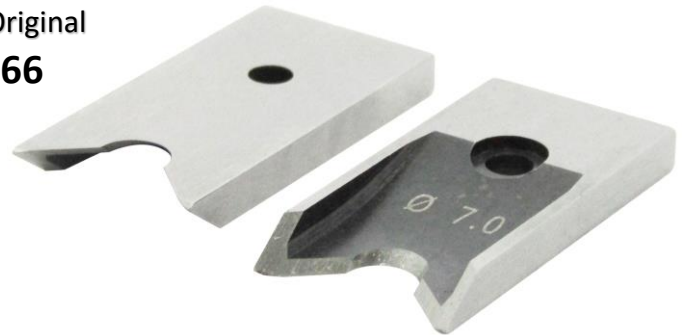
No. Parte Original  
**416065**

Descripción  
**NAVAJA 6MM 9550  
SET DE 2 PCS**

No. Tooling Manufacturing  
**120-416066**

No. Parte Original  
**416066**

Descripción  
**NAVAJA 7MM 9550  
SET DE 2 PCS**



No. Tooling Manufacturing  
**120-2-456403-6-AG**

No. Parte Original  
**2-456403-6-AG**

Descripción  
**CRIMPER WIRE  
567033**

No. Tooling Manufacturing  
**120-10-4368-1**

No. Parte Original  
**10-4368-1**

Descripción  
**CRIMPER**



No. Tooling Manufacturing  
**120-20-4368-1**

No. Parte Original  
**20-4368-1**

Descripción  
**CRIMPER DE  
INSULACION**



No. Tooling Manufacturing  
**120-7-1490019-7-AL**

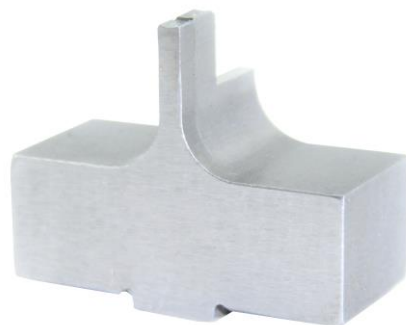
No. Parte Original  
**7-1490019-7-AL**

Descripción  
**CRIMPER**

No. Tooling Manufacturing  
**120-30-4368-1**

No. Parte Original  
**30-4368-1**

Descripción  
**ANVIL  
COMBINACION**



No. Tooling Manufacturing  
**120-416069**

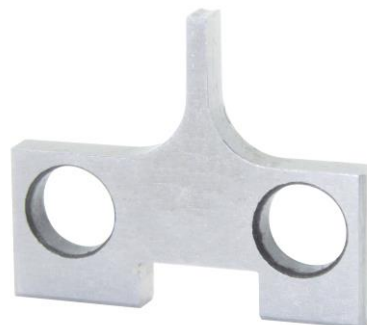
No. Parte Original  
**416069**

Descripción  
**NAVAJA 9 MM SET  
DE 2 PCS**

No. Tooling Manufacturing  
**120-6344514-46**

No. Parte Original  
**6344514-46**

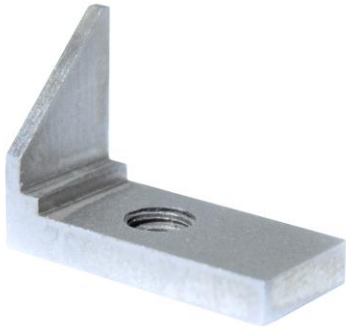
Descripción  
**ANVIL**



No. Tooling Manufacturing  
**120-60712G105**

No. Parte Original  
**60712G105**

Descripción  
**CORTADOR 60803**



No. Tooling Manufacturing  
**120-APP-3692**

No. Parte Original  
**APP-3692**

Descripción  
**UÑA ALIMENTADOR  
APPLITEK**

No. Tooling Manufacturing  
**120-D-3692**

No. Parte Original  
**D-3692**

Descripción  
**4510 PUNCH**



No. Tooling Manufacturing  
**120-S-4510**

No. Parte Original  
**S-4510**

Descripción  
**GUÍA PARA  
TERMINAL**

No. Tooling Manufacturing  
**120-1-683403-6-AA**

No. Parte Original  
**1-683403-6-AA**

Descripción  
**ANVIL  
COMBINACION**



No. Tooling Manufacturing  
**120-10-4098**

No. Parte Original  
**10-4098**

Descripción  
**CRIMPER DE  
FILAMENTOS**



No. Tooling Manufacturing  
**120-20-4098-1**

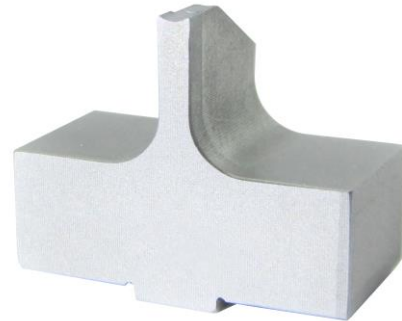
No. Parte Original  
**20-4098-1**

Descripción  
**CRIMPER DE  
INSULACION**

No. Tooling Manufacturing  
**120-30-4098**

No. Parte Original  
**30-4098**

Descripción  
**ANVIL**



No. Tooling Manufacturing  
**120-363021000**

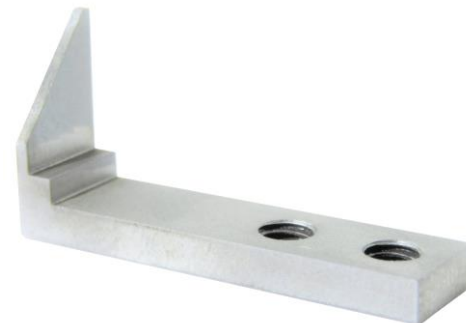
No. Parte Original  
**363021000**

Descripción  
**HOUSING FOR  
CUTTER**

No. Tooling Manufacturing  
**120-AOS-017S-A**

No. Parte Original  
**AOS-017S-A**

Descripción  
**UÑA DE ARRASTRE  
PARA BITECH**



No. Tooling Manufacturing  
**120-4-456403-2-AG**

No. Parte Original  
**4-456403-2-AG**

Descripción  
**CRIMPER DE  
FILAMENTOS**



No. Tooling Manufacturing  
**120-9-2119582-0-P**

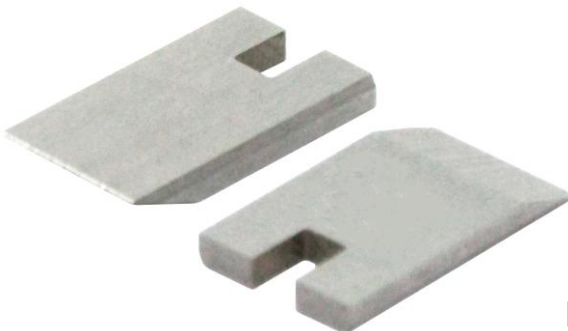
No. Parte Original  
**9-2119582-0-P**

Descripción  
**CRIMPER DE  
INSULACION**

No. Tooling Manufacturing  
**120-8-1333202-5-GV**

No. Parte Original  
**8-1333202-5-GV**

Descripción  
**ANVIL  
COMBINACION**



No. Tooling Manufacturing  
**120-9204306**

No. Parte Original  
**9204306**

Descripción  
**NAVAJAS DE  
CABIDE SET DE 2  
PCS MAQ.COMAX**

No. Tooling Manufacturing  
**120-9204307**

No. Parte Original  
**9204307**

Descripción  
**CENTRALIZADORES  
SET DE 2 PCS**



No. Tooling Manufacturing  
**120-419016**

No. Parte Original  
**419016**

Descripción  
**SCHLEUNLGER  
NAVAJA EN V SET 2 PC**



No. Tooling Manufacturing  
**120-1803095-3-E**

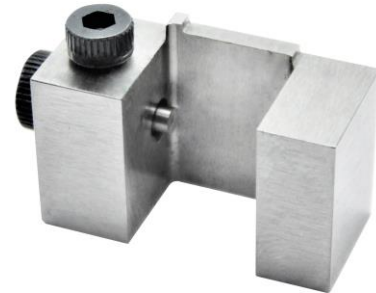
No. Parte Original  
**1803095-3-E**

Descripción  
**(2101) CUTTER  
FLOATING**

No. Tooling Manufacturing  
**120-2119805-1-T**

No. Parte Original  
**2119805-1-T**

Descripción  
**HOUSING**



No. Tooling Manufacturing  
**120-2119806-1**

No. Parte Original  
**2119806-1**

Descripción  
**INSERT SHEAR**

No. Tooling Manufacturing  
**120-4-1633966-7-J**

No. Parte Original  
**4-1633966-7-J**

Descripción  
**(2048) CRIMPER  
DE INSULACION**



No. Tooling Manufacturing  
**120-5-456405-3-AF**

No. Parte Original  
**5-456405-3-AF**

Descripción  
**(2048) CRIMPER DE  
FILAMENTOS**



No. Tooling Manufacturing  
**120-9-1633131-1-BM**

No. Parte Original  
**9-1633131-1-BM**

Descripción  
**ANVIL  
COMBINATION**

---

No. Tooling Manufacturing  
**120-6344512-12**

No. Parte Original  
**6344512-12**

Descripción  
**ANVIL**



No. Tooling Manufacturing  
**120-634451410**

No. Parte Original  
**634451410**

Descripción  
**ANVIL**

---

No. Tooling Manufacturing  
**120-6344614-06**

No. Parte Original  
**6344614-06**

Descripción  
**CRIMPER**



No. Tooling Manufacturing  
**120-6345712-12**

No. Parte Original  
**6345712-12**

Descripción  
**CRIMPER**

---



No. Tooling Manufacturing  
**120-95-4330**

No. Parte Original  
**95-4330**

Descripción  
**CUTTER FLOATING**

No. Tooling Manufacturing  
**120-D-4330**

No. Parte Original  
**D-4330**

Descripción  
**GUIA DE TERMINAL**



No. Tooling Manufacturing  
**120-S-4330**

No. Parte Original  
**S-4330**

Descripción  
**GUIA**

No. Tooling Manufacturing  
**120-30-4510-A**

No. Parte Original  
**30-4510-A**

Descripción  
**ANVIL**



No. Tooling Manufacturing  
**120-462006-1**

No. Parte Original  
**462006-1**

Descripción  
**CUTTER SHEAR**



No. Tooling Manufacturing  
**120-20012021**

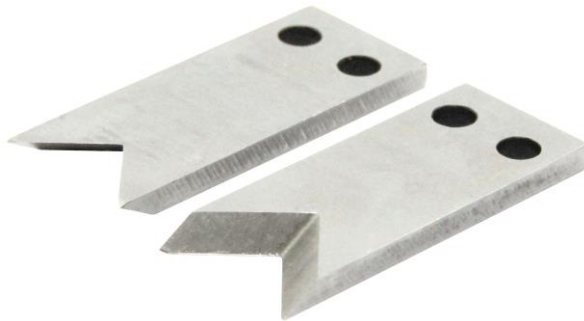
No. Parte Original  
**20012021**

Descripción  
**LEVA**

No. Tooling Manufacturing  
**120-STM-410993**

No. Parte Original  
**STM-410993**

Descripción  
**STRIP BLADE SET 2  
PIEZAS**



No. Tooling Manufacturing  
**120-016498**

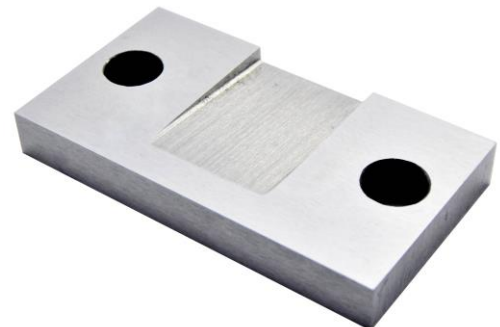
No. Parte Original  
**016498**

Descripción  
**NAVAJA KOMAX 34  
SET DE 2 PCS**

No. Tooling Manufacturing  
**120-1-240644-1**

No. Parte Original  
**1-240644-1**

Descripción  
**SHEAR BLADE**



No. Tooling Manufacturing  
**120-2-691157-6**

No. Parte Original  
**2-691157-6**

Descripción  
**SHEAR BLADE**



No. Tooling Manufacturing  
**120-240642-5-G**

No. Parte Original  
**240642-5-G**

Descripción  
**SPACER**

---

No. Tooling Manufacturing  
**120-4-1803002-5-M**

No. Parte Original  
**4-1803002-5-M**

Descripción  
**ANVIL**



No. Tooling Manufacturing  
**120-456409-5-U**

No. Parte Original  
**456409-5-U**

Descripción  
**CRIMPER WIRE  
(2051)**

---

No. Tooling Manufacturing  
**120-6344412-10**

No. Parte Original  
**6344412-10**

Descripción  
**CRIMPER WIRE**



No. Tooling Manufacturing  
**120-6344615-14**

No. Parte Original  
**6344615-14**

Descripción  
**CRIMPER  
INSULACION**



No. Tooling Manufacturing  
**120-6344512-13**

No. Parte Original  
**6344512-13**

Descripción  
**ANVIL DE  
INSULACION**

No. Tooling Manufacturing  
**120-6344515-10**

No. Parte Original  
**6344515-10**

Descripción  
**ANVIL DE  
FILAMENTOS**



No. Tooling Manufacturing  
**120-6-456402-9-AU**

No. Parte Original  
**6-456402-9-AU**

Descripción  
**(2005) CRIMPER DE  
FILAMENTOS**

No. Tooling Manufacturing  
**120-9-1633966-8-W**

No. Parte Original  
**9-1633966-8-W**

Descripción  
**(2005) CRIMPER DE  
INSULACION**



No. Tooling Manufacturing  
**120-2-1803252-3-BH**

No. Parte Original  
**2-1803252-3-BH**

Descripción  
**ANVIL  
COMBINACION**





No. Tooling Manufacturing  
**120-13-060**

No. Parte Original  
**13-060**

Descripción  
**(F111215-03)  
Formador**

No. Tooling Manufacturing  
**120-9-08970974**

No. Parte Original  
**9-08970974**

Descripción  
**(F161005-08) ANVIL  
DOBLE**



No. Tooling Manufacturing  
**120-12-05671622**

No. Parte Original  
**12-05671622**

Descripción  
**SHEAR BLADE**

No. Tooling Manufacturing  
**120-70190**

No. Parte Original  
**70190**

Descripción  
**(F160518-02)  
SHEAR BLADE**



No. Tooling Manufacturing  
**120-1-456135-1-BW**

No. Parte Original  
**1-456135-1-BW**

Descripción  
**(1904) CRIMPER  
INSULATION**



No. Tooling Manufacturing  
**120-2-456134-2-BZ**

No. Parte Original  
**2-456134-2-BZ**

Descripción  
**(2039) CRIMPER DE  
FILAMENTOS**

No. Tooling Manufacturing  
**120-MTZ04082021**

No. Parte Original  
**MTZ04082021**

Descripción  
**MANDRIL  
P/INSERTOS**



No. Tooling Manufacturing  
**120-1-683403-3-AL**

No. Parte Original  
**1-683403-3-AL**

Descripción  
**ANVIL  
COMBINATION**

No. Tooling Manufacturing  
**120-10-4565**

No. Parte Original  
**10-4565**

Descripción  
**CRIMPER DE  
FILAMENTOS**



No. Tooling Manufacturing  
**120-20-4565**

No. Parte Original  
**20-4565**

Descripción  
**CRIMPER DE  
INSULACION**



No. Tooling Manufacturing  
**120-30-4565**

No. Parte Original  
**30-4565**

Descripción  
**ANVIL**

---

No. Tooling Manufacturing  
**120-10-4128**

No. Parte Original  
**10-4128**

Descripción  
**CRIMPER DE  
TERMINAL**



No. Tooling Manufacturing  
**120-20-4128**

No. Parte Original  
**20-4128**

Descripción  
**CRIMPER DE  
INSULACION**

---

No. Tooling Manufacturing  
**120-30-4128**

No. Parte Original  
**30-4128**

Descripción  
**ANVIL**



No. Tooling Manufacturing  
**120-638914001  
REV.A**

No. Parte Original  
**638914001  
REV.A**

Descripción  
**CRIMPER**

---



No. Tooling Manufacturing  
**120-2-1490019-4-J**

No. Parte Original  
**2-1490019-4-J**

Descripción  
**CRIMPER**

No. Tooling Manufacturing  
**120-1-1803016-7-B**

No. Parte Original  
**1-1803016-7-B**

Descripción  
**CRIMPER**



No. Tooling Manufacturing  
**120-L13-08-14**  
**1017-468**

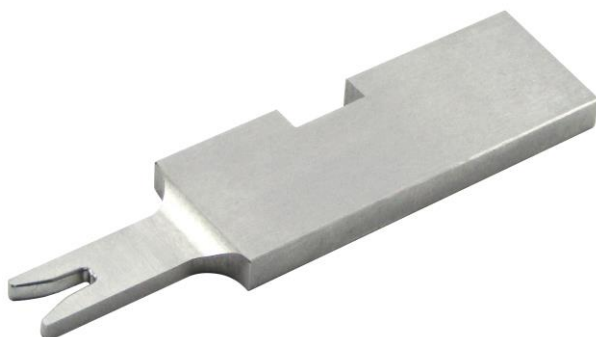
No. Parte Original  
**L13-08-14 1017-468**

Descripción  
**UÑA DCT-16-00**

No. Tooling Manufacturing  
**120-CHP-001**

No. Parte Original  
**CHP-001**

Descripción  
**EXPULSADOR PARA  
APLICADOR BITECH**



No. Tooling Manufacturing  
**120-6344419-09**

No. Parte Original  
**6344419-09**

Descripción  
**CRIMPER DE  
FILAMENTOS**



No. Tooling Manufacturing  
**120-634550147 RV.B**

No. Parte Original  
**634550147 RV.B**

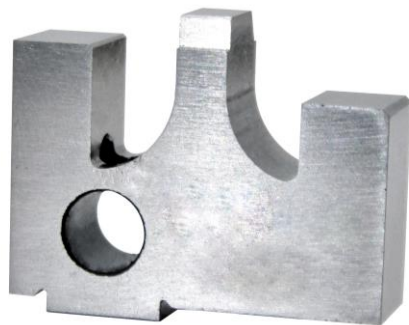
Descripción  
**ANVIL DE  
FILAMENTOS**

---

No. Tooling Manufacturing  
**120-10-4583-00**

No. Parte Original  
**10-4583-00**

Descripción  
**FORMADOR**



No. Tooling Manufacturing  
**120-30-4583-00**

No. Parte Original  
**30-4583-00**

Descripción  
**ANVIL**

---

No. Tooling Manufacturing  
**120-CS-4583**

No. Parte Original  
**CS-4583**

Descripción  
**CARRIER SHEAR**



No. Tooling Manufacturing  
**120-FG-4583**

No. Parte Original  
**FG-4583**

Descripción  
**FRONT GUIDE**



No. Tooling Manufacturing  
**120-TS-4583**

No. Parte Original  
**TS-4583**

Descripción  
**TERMINAL SHEAR**

No. Tooling Manufacturing  
**120-419935**

No. Parte Original  
**419935**

Descripción  
**NAVAJAS EN V SET  
DE 2 PCS.**



No. Tooling Manufacturing  
**120-634430003G**

No. Parte Original  
**634430003G**

Descripción  
**CUTTING FLOATING**

No. Tooling Manufacturing  
**120-FAPI-0005-1**

No. Parte Original  
**FAPI-0005-1**

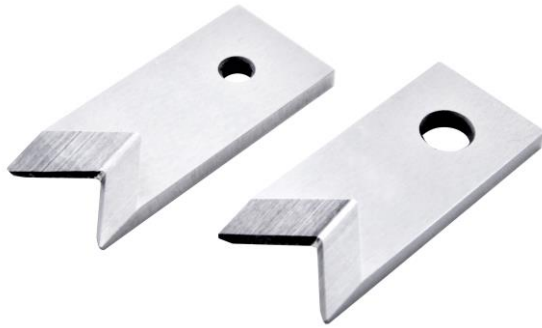
Descripción  
**CORONA POSICIONADOR  
PARA REMACHADORA**



No. Tooling Manufacturing  
**120-FAPI-0005-2**

No. Parte Original  
**FAPI-0005-2**

Descripción  
**PINES REMACHADORES  
DE TERMINAL SET DE 4**



No. Tooling Manufacturing  
**120-405095**

No. Parte Original  
**405095**

Descripción  
**SHEAR BLADE (SET  
2 PCS)**

---

No. Tooling Manufacturing  
**120-TA-T-3001**

No. Parte Original  
**TA-T-3001**

Descripción  
**PIN SLEEVE HANDLE**



No. Tooling Manufacturing  
**120-TA-T-3002**

No. Parte Original  
**TA-T-3002**

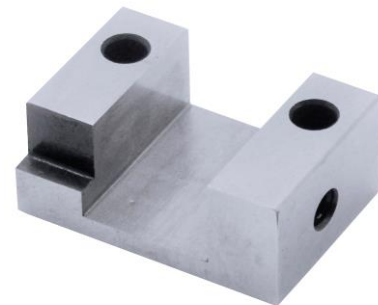
Descripción  
**PIN SLEEVE HANDLE**

---

No. Tooling Manufacturing  
**120-CAJASINE-027**

No. Parte Original  
**CAJASINE-027**

Descripción  
**HOUSING**



No. Tooling Manufacturing  
**120-CORSINE-027**

No. Parte Original  
**CORSINE-027**

Descripción  
**CUTTER FLOATING**

---



No. Tooling Manufacturing  
**120-456402-2-AU**

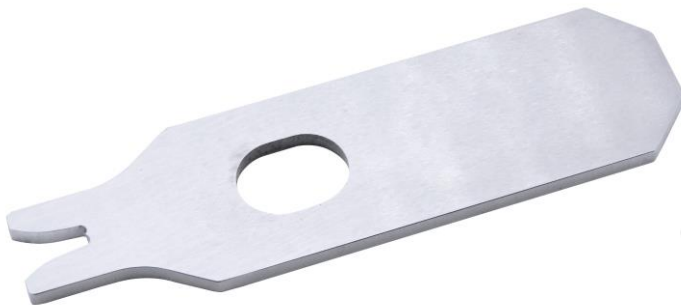
No. Parte Original  
**456402-2-AU**

Descripción  
**(2143) CRIMPER**

No. Tooling Manufacturing  
**120-4-238005-0-AJ**

No. Parte Original  
**4-238005-0-AJ**

Descripción  
**ANVIL  
COMBINATION**



No. Tooling Manufacturing  
**120-1-456134-4-AZ**

No. Parte Original  
**1-456134-4-AZ**

Descripción  
**(2121) CRIMPER OF  
INSULATION**

No. Tooling Manufacturing  
**120-7-356038-8-M**

No. Parte Original  
**7-356038-8-M**

Descripción  
**ANVIL  
COMBINACION**



No. Tooling Manufacturing  
**120-10-4551**

No. Parte Original  
**10-4551**

Descripción  
**REMACHADOR**



No. Tooling Manufacturing  
**120-30-4551**

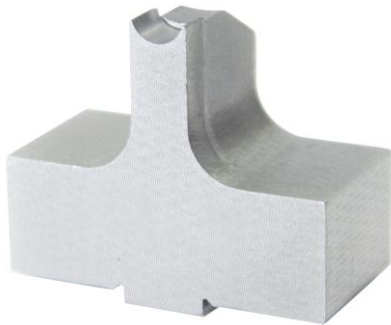
No. Parte Original  
**30-4551**

Descripción  
**ANVIL**

No. Tooling Manufacturing  
**120-10-4136-1**

No. Parte Original  
**10-4136-1**

Descripción  
**CRIMPER**



No. Tooling Manufacturing  
**120-30-4136-1**

No. Parte Original  
**30-4136-1**

Descripción  
**ANVIL  
COMBINATION**

No. Tooling Manufacturing  
**120-6344619-02**  
**REV.E**

No. Parte Original  
**6344619-02**  
**REV.E**

Descripción  
**DDM 11-23-21**  
**CRIMPER**



No. Tooling Manufacturing  
**120-6344518-19**

No. Parte Original  
**6344518-19**  
**REV.E**

**REV.E**  
Descripción  
**DDM 07-28-21**  
**ANVIL**



No. Tooling Manufacturing  
**120-TFC-FB-9112-03-08**

No. Parte Original  
**TFC-FB-9112-03-08**

Descripción  
**PIN WIRE SEAL PIN**

---

No. Tooling Manufacturing  
**120-TFC-FB-9112-04-41**

No. Parte Original  
**TFC-FB-9112-04-41**

Descripción  
**PIN WIRE SEAL PIN**



---

No. Tooling Manufacturing  
**120-TFC-FB-9113-03-25**

No. Parte Original  
**TFC-FB-9113-03-25**

Descripción  
**PIN WIRE SEAL PIN**



---

No. Tooling Manufacturing  
**120-TFC-FB-9113-04-52**

No. Parte Original  
**TFC-FB-9113-04-52**

Descripción  
**PIN WIRE SEAL PIN**



No. Tooling Manufacturing  
**120-1-690495-9-K**

No. Parte Original  
**1-690495-9-K**

Descripción  
**CUTTER**



No. Tooling Manufacturing  
**120-690474-6-AH**

No. Parte Original  
**690474-6-AH**

Descripción  
**CUTTER**

No. Tooling Manufacturing  
**120-C75585**

No. Parte Original  
**C75585**

Descripción  
**(B16M7) ANVIL**



No. Tooling Manufacturing  
**120-1-683403-3-AA**

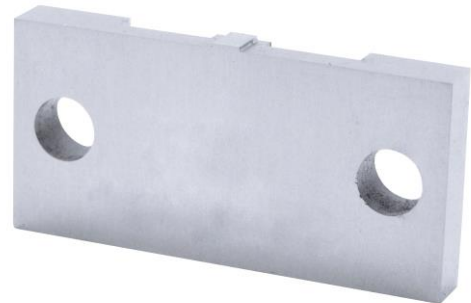
No. Parte Original  
**1-683403-3-AA**

Descripción  
**ANVIL  
COMBINACION**

No. Tooling Manufacturing  
**120-690495-8-K.**

No. Parte Original  
**690495-8-K.**

Descripción  
**CUTTER**



No. Tooling Manufacturing  
**120-ENS001PINLIG**

No. Parte Original  
**ENS001PINLIG**

Descripción  
**PIN LIGA ENSA-001  
(SET 4 PCS)**



No. Tooling Manufacturing  
**120-TFC-FB-8374-03-65**

No. Parte Original  
**TFC-FB-8374-03-65**

Descripción  
**PIN FOR JAW TFC-  
FB-8374-03-65  
(SET 4 PCS)**

No. Tooling Manufacturing  
**120-20.96 010150005**  
**16.23**

No. Parte Original  
**20.96 010150005**  
**16.23**

Descripción  
**ANVIL**



No. Tooling Manufacturing  
**120-20.98**  
**010150046 16.20**

No. Parte Original  
**20.98**  
**010150046**  
**16.20**

Descripción  
**CRIMPER**

No. Tooling Manufacturing  
**120-TFC-FB-8374-03-52**

No. Parte Original  
**TFC-FB-8374-03-52**

Descripción  
**PIEZA ANGULADA  
PARA EXPANDER**



No. Tooling Manufacturing  
**120-ENS001GROM**

No. Parte Original  
**ENS001GROM2**

**225422802**  
Descripción  
**PIN PARA GROMET  
CAFÉ DE 2  
POSICIONES MAQ.  
ENSA 001**



No. Tooling Manufacturing

**120-20.98**

**010150005 16.23**

Descripción

**CRIMPER  
CONDUCTOR**

No. Parte Original

**20.98**

**010150005**

**16.23**

No. Tooling Manufacturing

**120-20.99**

**010150005-R 23.25**

Descripción

**CRIMPER  
INSULANTE**

No. Parte Original

**20.99**

**010150005-R**

**23.25**



No. Tooling Manufacturing

**120-456400-9-N**

Descripción

**(2042) CRIMPER**

No. Parte Original

**456400-9-N**

No. Tooling Manufacturing

**120-AOS-09**

Descripción

**HOUSING**

No. Parte Original

**AOS-09**



No. Tooling Manufacturing

**120-TFC-FB-9372-03-08**

Descripción

**PIN GROMMET  
ENSA-005**

No. Parte Original

**TFC-FB-9372-03-08**





No. Tooling Manufacturing  
**120-TFC-FB-9372-04-52**

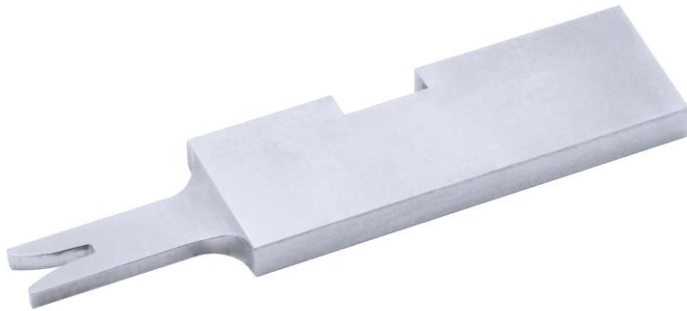
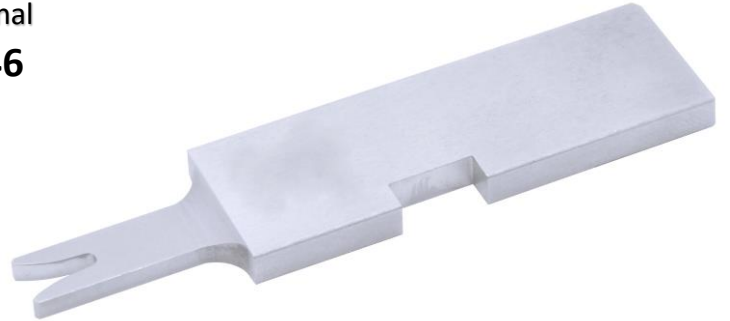
No. Parte Original  
**TFC-FB-9372-04-52**

Descripción  
**PIN EXPANSOR LIGA  
ENSA-005**

No. Tooling Manufacturing  
**120-634540146**  
**REV.A**

No. Parte Original  
**634540146**  
**REV.A**

Descripción  
**FORMADOR DE  
INSULACION**



No. Tooling Manufacturing  
**120-634571403**  
**REV.A**

No. Parte Original  
**634571403**  
**REV.A**

Descripción  
**FORMADOR DE  
FILAMENTOS**

No. Tooling Manufacturing  
**120-634560099**  
**REV.A**

No. Parte Original  
**634560099**  
**REV.A**

Descripción  
**ANVIL**



No. Tooling Manufacturing  
**120-634451431**  
**REV.F**  
Descripción  
**ANVIL**

No. Parte Original  
**634451431**  
**REV.F**



No. Tooling Manufacturing  
**120-805887-3-BP**

No. Parte Original  
**805887-3-BP**

Descripción  
**ANVIL  
COMBINATION**

---

No. Tooling Manufacturing  
**120-464291-1-F**

No. Parte Original  
**464291-1-F**

Descripción  
**ANVIL**



No. Tooling Manufacturing  
**120-464290-1-F**

No. Parte Original  
**464290-1-F**

Descripción  
**FORMADOR**

---

No. Tooling Manufacturing  
**120-2-854014-5-BB**

No. Parte Original  
**2-854014-5-BB**

Descripción  
**ANVIL**



No. Tooling Manufacturing  
**120-DESINSERTADOR-#3**

No. Parte Original  
**DESINSERTADOR-#3**

Descripción  
**ANVIL**



No. Tooling Manufacturing  
**120-2-683453-0-BK**

No. Parte Original  
**2-683453-0-BK**

Descripción  
**(2137) CRIMPER**

No. Tooling Manufacturing  
**120-3-904132-6-U**

No. Parte Original  
**3-904132-6-U**

Descripción  
**ANVIL  
COMBINATION**



No. Tooling Manufacturing  
**120-634650002**  
**REV.C**

No. Parte Original  
**634650002**  
**REV.C**

Descripción  
**DDM 03/22/22**  
**FORMADOR**

No. Tooling Manufacturing  
**120-634620006**  
**RV.A**

No. Parte Original  
**634620006**  
**RV.A**

Descripción  
**DDM 11/17/22**  
**ANVIL**



No. Tooling Manufacturing  
**120-7163-4/B**

No. Parte Original  
**7163-4/B**

Descripción  
**D.S 10/21 SHEAR**  
**BLADE**



No. Tooling Manufacturing  
**120-CD-800-C-1**

No. Parte Original  
**CD-800-C-1**

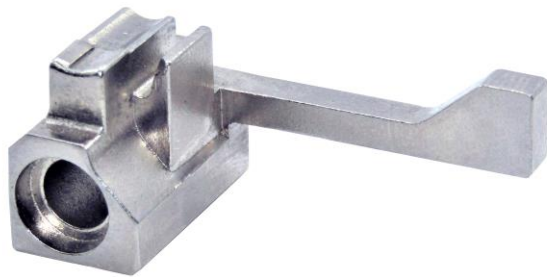
Descripción  
**CRIMPER**

---

No. Tooling Manufacturing  
**120-CD-800-1**

No. Parte Original  
**CD-800-1**

Descripción  
**CRIMPER**



No. Tooling Manufacturing  
**120-C-1**

No. Parte Original  
**C-1**

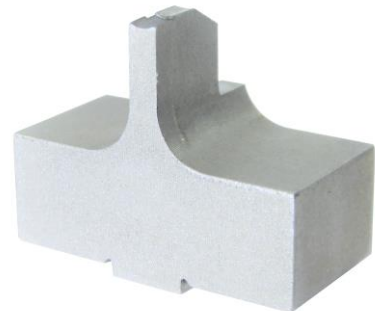
Descripción  
**ANVIL**

---

No. Tooling Manufacturing  
**120-30-4098-1**

No. Parte Original  
**30-4098-1**

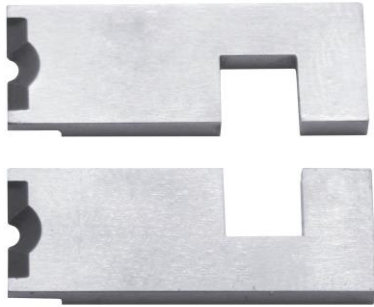
Descripción  
**ANVIL  
COMBINACION**



No. Tooling Manufacturing  
**120-1.5X1.3 F5U-  
5833-2**

No. Parte Original  
**1.5X1.3 F5U-5833-2**

Descripción  
**CRIMPER**



No. Tooling Manufacturing  
**120-008138 Ø1.58**

No. Parte Original  
**008138 Ø1.58**

Descripción  
**NAVAJAS SET 2 PCS  
LEFT RIGHT**

No. Tooling Manufacturing  
**120-PINGROMMETENSA#7**

No. Parte Original  
**PINGROMMETENSA#7**

Descripción  
**PIN GROMMET ENSA #7  
(SET 5 PCS)**



No. Tooling Manufacturing  
**120-PINGROMMETENSA#6**

No. Parte Original  
**PINGROMMETENSA#6**

Descripción  
**PIN GROMMET ENSA #6  
(SET 4 PCS)**

No. Tooling Manufacturing  
**120-PINGROMMETENSA#8**

No. Parte Original  
**PINGROMMETENSA#8**

Descripción  
**PIN GROMMET ENSA #8  
(SET 4 PCS)**



No. Tooling Manufacturing  
**120-PINLIGAENSA#6**

No. Parte Original  
**PINLIGAENSA#6**

Descripción  
**PIN LIGA ENSA #6**



No. Tooling Manufacturing  
**120-428037**

No. Parte Original  
**428037**

Descripción  
**NAVAJA 2MM SET  
DE 2 PCS**

No. Tooling Manufacturing  
**120-1633966-7-B**

No. Parte Original  
**1633966-7-B**

Descripción  
**CRIMPER**



No. Tooling Manufacturing  
**120-356553-1**

No. Parte Original  
**356553-1**

**120-356553-2**

**356553-2**

Descripción

**STRIP BLADE KIT 10-26  
AWG (SET 4 NAVAJAS)**

No. Tooling Manufacturing  
**120-456404-6**

No. Parte Original  
**1-456404-6**

Descripción  
**CRIMPER WIRE  
070F**



No. Tooling Manufacturing  
**120-462006-1**

No. Parte Original  
**462006-1**

Descripción  
**FLOATING SHEAR**



No. Tooling Manufacturing

**120-1-456406-1**

No. Parte Original

**1-456406-1**

Descripción

**CRIMPER WIRE 090 F**

No. Tooling Manufacturing

**120-458141-2-AM**

No. Parte Original

**458141-2-AM**

Descripción

**CRIMPER WIRE**



No. Tooling Manufacturing

**120-690474-6-Y**

No. Parte Original

**690474-6-Y**

Descripción

**SHEAR BLADE \*15  
BLADE SLUG**

No. Tooling Manufacturing

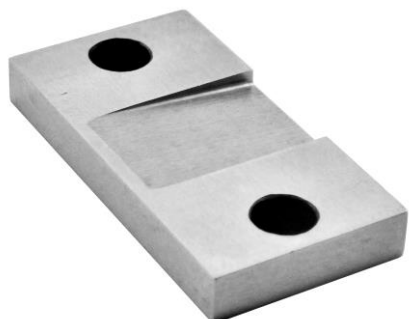
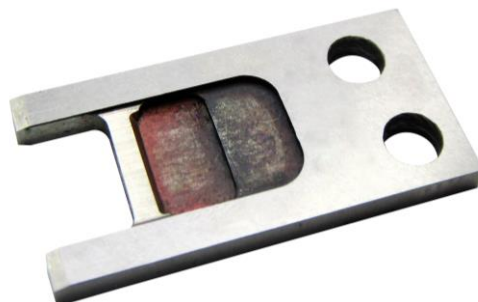
**120-2-690474-6-AE**

No. Parte Original

**2-690474-6-AE**

Descripción

**SHEAR BLADE**



No. Tooling Manufacturing

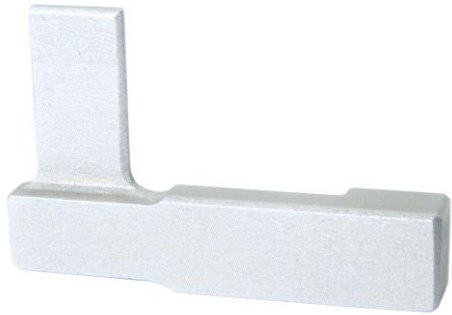
**120-240644-1-C**

No. Parte Original

**240644-1-C**

Descripción

**PLATE-REAR  
SHEAR**



No. Tooling Manufacturing  
**120-1-455892-9-P**

No. Parte Original  
**1-455892-9-P**

Descripción  
**HOLD DOWN**

No. Tooling Manufacturing  
**120-458253-5-E**

No. Parte Original  
**458253-5-E**

Descripción  
**SHEAR BLADE**



No. Tooling Manufacturing  
**120-690474-4-Y**

No. Parte Original  
**690474-4-Y**

Descripción  
**SHEAR BLADE**

No. Tooling Manufacturing  
**120-2217206-4-A**

No. Parte Original  
**2217206-4-A**

Descripción  
**BLADE SLUG**



No. Tooling Manufacturing  
**120-2-454765-2-L**

No. Parte Original  
**2-454765-2-L**

Descripción  
**CLIMPER  
INSULACION**



No. Tooling Manufacturing  
**120-0690472-2**

No. Parte Original  
**0690472-2**

Descripción  
**STRIPPER**

No. Tooling Manufacturing  
**120-808830-2-F**

No. Parte Original  
**808830-2-F**

Descripción  
**CRIMPER WIRE**



No. Tooling Manufacturing  
**120-1-456402-6-AE.**  
**(1202)**

No. Parte Original  
**1-456402-6-AE.**  
**(1202)**

Descripción  
**CRIMPER**

No. Tooling Manufacturing  
**120-4-456134-8-BY**

No. Parte Original  
**4-456134-8-BY**

Descripción  
**CRIMPER**



No. Tooling Manufacturing  
**120-2-456401-1-S**

No. Parte Original  
**2-456401-1-S**

Descripción  
**CRIMPER WIRE 42 F**



No. Tooling Manufacturing  
**120-9-456134-3-BZ**

No. Parte Original  
**9-456134-3-BZ**

Descripción  
**CRIMPER  
INSULACION**

No. Tooling Manufacturing  
**120-844764-5**

No. Parte Original  
**844764-5**

Descripción  
**BLADE CUTTING**



No. Tooling Manufacturing  
**120-1-456404-8-Y**

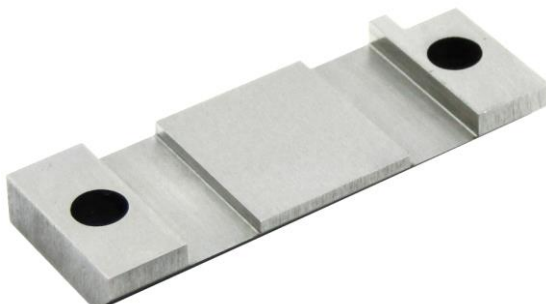
No. Parte Original  
**1-456404-8-Y**

Descripción  
**CRIMPER WIRE 070**

No. Tooling Manufacturing  
**120-1-456406-6-V**

No. Parte Original  
**1-456406-6-V**

Descripción  
**CRIMPER WIRE.090**



No. Tooling Manufacturing  
**120-1-458254-1-B**

No. Parte Original  
**1-458254-1-B**

Descripción  
**PLATE FRONT  
CHEAR**



No. Tooling Manufacturing  
**120-2-456134-2-BZ**

No. Parte Original  
**2-456134-2-BZ**

Descripción  
**CRIMPER  
INSULACION**

No. Tooling Manufacturing  
**120-4-238005-0-AJ**

No. Parte Original  
**4-238005-0-AJ**

Descripción  
**ANVIL**



No. Tooling Manufacturing  
**120-454276-1-AJ**

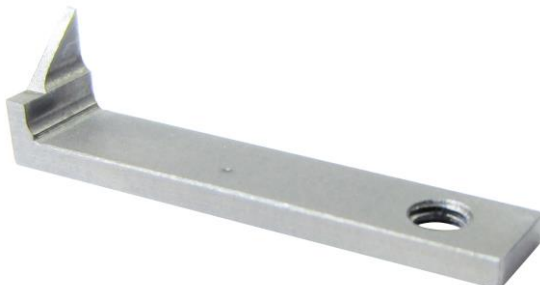
No. Parte Original  
**454276-1-AJ**

Descripción  
**FLOATING SHEAR**

No. Tooling Manufacturing  
**120-467590-1-C**

No. Parte Original  
**467590-1-C**

Descripción  
**REAR SHEAR HOLER**



No. Tooling Manufacturing  
**120-690542-2-E**

No. Parte Original  
**690542-2-E**

Descripción  
**FEEN PAWI**



No. Tooling Manufacturing  
**120-033958**

No. Parte Original  
**033958**

Descripción  
**NAVAJA ORIGINAL  
MAQUINAS AMP  
KOMAX**

No. Tooling Manufacturing  
**120-030297**

No. Parte Original  
**030297**

Descripción  
**NAVAJA ORIGINAL  
TOP G333/ALPHA**



No. Tooling Manufacturing  
**120-037862**

No. Parte Original  
**037862**

Descripción  
**NAVAJA ORIGINAL  
BOTTOM/BAD**

No. Tooling Manufacturing  
**120-2-2119582-0**

No. Parte Original  
**2-2119582-0**

Descripción  
**CRIMPER  
INSULACION F**



No. Tooling Manufacturing  
**120-2-2119582-1**

No. Parte Original  
**2-2119582-1**

Descripción  
**CRIMPER  
INSULACION**



No. Tooling Manufacturing  
**120-1-2119582-0-D**

No. Parte Original  
**1-2119582-0-D**

Descripción  
**CRIMPER  
INSULACION**

No. Tooling Manufacturing  
**120-5-1633961-8-J**

No. Parte Original  
**5-1633961-8-J**

Descripción  
**CRIMPER  
INSULACION**



No. Tooling Manufacturing  
**120-1338689-1-A**

No. Parte Original  
**1338689-1-A**

Descripción  
**ANVIL**

No. Tooling Manufacturing  
**120-456401-7-S**

No. Parte Original  
**456401-7-S**

Descripción  
**CRIMPER WIRE**



No. Tooling Manufacturing  
**120-1-456403-5-P**

No. Parte Original  
**1-456403-5-P**

Descripción  
**CRIMPER**



No. Tooling Manufacturing  
**120-1-1338691-0-F**

No. Parte Original  
**1-1338691-0-F**

Descripción  
**ANVIL**

No. Tooling Manufacturing  
**120-5-1333217-9-BZ**

No. Parte Original  
**5-1333217-9-BZ**

Descripción  
**ANVIL EF .090**



No. Tooling Manufacturing  
**120-1-456406-2-V**

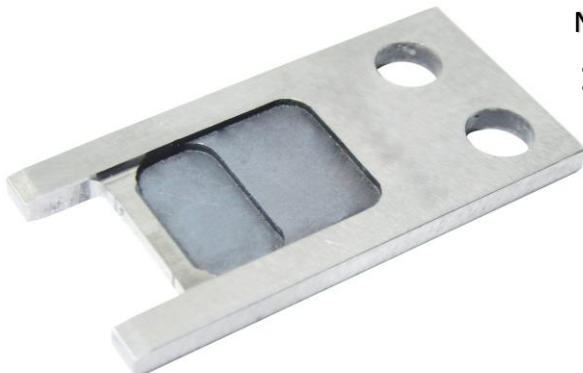
No. Parte Original  
**1-456406-2-V**

Descripción  
**CRIMPER WIRE  
1417 090 F**

No. Tooling Manufacturing  
**120-2-1633961-6-D**

No. Parte Original  
**2-1633961-6-D**

Descripción  
**CRIMPER (1436)**



No. Tooling Manufacturing  
**120-1-2217206-0-A**

No. Parte Original  
**1-2217206-0-A**

Descripción  
**SHEAR BLADE**



No. Tooling Manufacturing  
**120-4-1633139-4**

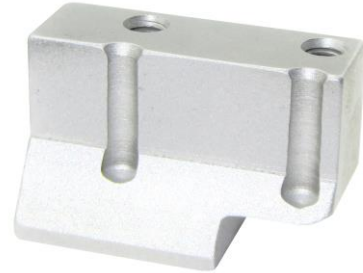
No. Parte Original  
**4-1633139-4**

Descripción  
**ANVIL  
CONBINATON**

No. Tooling Manufacturing  
**120-3-1752356-9**

No. Parte Original  
**3-1752356-9**

Descripción  
**SUPPORT  
TERMINAL**



No. Tooling Manufacturing  
**120-2063796-1-F**

No. Parte Original  
**2063796-1-F**

Descripción  
**ARM FEED**

No. Tooling Manufacturing  
**120-2-456408-6-J**

No. Parte Original  
**2-456408-6-J**

Descripción  
**CRIMPER  
WIRE.110"F"**



No. Tooling Manufacturing  
**120-3-683453-2-AV**

No. Parte Original  
**3-683453-2-AV**

Descripción  
**CRIMPER  
INSULACION "F"**



No. Tooling Manufacturing  
**120-4-803653-9 AE**

No. Parte Original  
**4-803653-9 AE**

Descripción  
**ANVIL  
CONBINATION**

No. Tooling Manufacturing  
**120-2-456406-2-V**

No. Parte Original  
**2-456406-2-V**

Descripción  
**CRIMPER WIRE.090**



No. Tooling Manufacturing  
**120-2119534-1-F**

No. Parte Original  
**2119534-1-F**

Descripción  
**MOUNT STRIPER  
SIDE FEED**

No. Tooling Manufacturing  
**120-1320928-2 M**

No. Parte Original  
**1320928-2 M**

Descripción  
**PLATE STRIP GUIDE**



No. Tooling Manufacturing  
**120-1-1338691-0-F**

No. Parte Original  
**1-1338691-0-F**

Descripción  
**ANVIL**



No. Tooling Manufacturing  
**120-2119342-1-L**

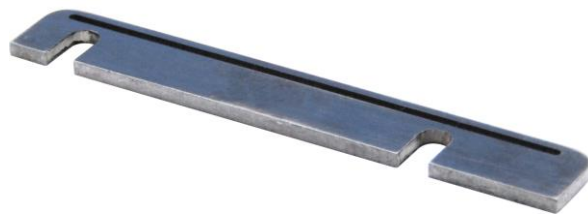
No. Parte Original  
**2119342-1-L**

Descripción  
**HOLDER FEED F**

No. Tooling Manufacturing  
**120-690438-1-L**

No. Parte Original  
**690438-1-L**

Descripción  
**FRONT STRIP GUIDE**



No. Tooling Manufacturing  
**120-1-690438-0-L**

No. Parte Original  
**1-690438-0-L**

Descripción  
**FRONT STRIP  
GUIDE**

No. Tooling Manufacturing  
**120-4-456406-4-V**

No. Parte Original  
**4-456406-4-V**

Descripción  
**CRIMPER WIRE.  
090 F**



No. Tooling Manufacturing  
**120-1-455888-0-C**

No. Parte Original  
**1-455888-0-C**

Descripción  
**SPACE CRIMPER  
(050)**



No. Tooling Manufacturing  
**120-5-1333205-6-EE**

No. Parte Original  
**5-1333205-6-EE**

Descripción  
**ANVIL**

No. Tooling Manufacturing  
**120-469542-3-F**

No. Parte Original  
**469542-3-F**

Descripción  
**FLOATIN SHEAR**



No. Tooling Manufacturing  
**120-456402-2-AE**

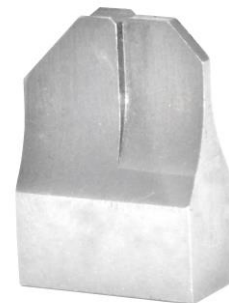
No. Parte Original  
**456402-2-AE**

Descripción  
**CRIMPER  
WIRE.55" F"**

No. Tooling Manufacturing  
**120-3-1803000-7-P**

No. Parte Original  
**3-1803000-7-P**

Descripción  
**ANVIL  
CONVINACION**



No. Tooling Manufacturing  
**120-1320928-1-L**

No. Parte Original  
**1320928-1-L**

Descripción  
**PLATE STRIP  
GUIDE**



No. Tooling Manufacturing  
**120-1633965-2-A**

No. Parte Original  
**1633965-2-A**

Descripción  
**CRIMPER  
APLICADOR 103**

No. Tooling Manufacturing  
**120-1803017-9-A**

No. Parte Original  
**1803017-9-A**

Descripción  
**CRIMPER  
AMPLICADOR 103**



No. Tooling Manufacturing  
**120-4-456406-1**

No. Parte Original  
**4-456406-1**

Descripción  
**CRIMPER WIRE**

No. Tooling Manufacturing  
**120-1-240651-6-R**

No. Parte Original  
**1-240651-6-R**

Descripción  
**SHEAR BLADE**



No. Tooling Manufacturing  
**120-462006-6-AA**

No. Parte Original  
**462006-6-AA**

Descripción  
**FLOATING SHEAR**



No. Tooling Manufacturing  
**120-5-456406-7-V**

No. Parte Original  
**5-456406-7-V**

Descripción  
**CRIMPER**

No. Tooling Manufacturing  
**120-2063961-1**

No. Parte Original  
**2063961-1**

Descripción  
**NAIL FOR HOLDER  
FEED FINGER.**



No. Tooling Manufacturing  
**120-2119757-8-E**

No. Parte Original  
**2119757-8-E**

Descripción  
**PUSHER**

No. Tooling Manufacturing  
**120-2-1633730-5-C**

No. Parte Original  
**2-1633730-5-C**

Descripción  
**CRIMPER WIRE.**



No. Tooling Manufacturing  
**120-1-1633730-9-C**

No. Parte Original  
**1-1633730-9-C**

Descripción  
**CRIMPER WIRE.**



No. Tooling Manufacturing  
**120-3-1803001-4-R**

No. Parte Original  
**3-1803001-4-R**

Descripción  
**ANVIL APLICADOR  
103 TERMINAL**

No. Tooling Manufacturing  
**120-3-2119582-6-D**

No. Parte Original  
**3-2119582-6-D**

Descripción  
**CRIMPER WIRE**



No. Tooling Manufacturing  
**120-3-456404-6-Y**

No. Parte Original  
**3-456404-6-Y**

Descripción  
**CRIMPER WIRE**

No. Tooling Manufacturing  
**120-6-1490019-5-V**

No. Parte Original  
**6-1490019-5-V**

Descripción  
**CRIMPER  
AMPLICADOR 103**



No. Tooling Manufacturing  
**120-458537-2-G**

No. Parte Original  
**458537-2-G**

Descripción  
**HOLDER FEED  
FINGER**



No. Tooling Manufacturing  
**120-455888-4-F**

No. Parte Original  
**455888-4-F**

Descripción  
**SPACE**

No. Tooling Manufacturing  
**120-456402-1-AE**

No. Parte Original  
**456402-1-AE**

Descripción  
**CRIMPER WIRE**



No. Tooling Manufacturing  
**120-464281-1-E**

No. Parte Original  
**464281-1-E**

Descripción  
**CRIMPER WIRE**

No. Tooling Manufacturing  
**120-464290-1-F**

No. Parte Original  
**464290-1-F**

Descripción  
**CRIMPER WIRE**



No. Tooling Manufacturing  
**120-467342-3-H**

No. Parte Original  
**467342-3-H**

Descripción  
**CRIMPER WIRE**



No. Tooling Manufacturing  
**120-5-2119582-2-E**

No. Parte Original  
**5-2119582-2-E**

Descripción  
**CRIMPER WIRE**

No. Tooling Manufacturing  
**120-6-1633965-4-F**

No. Parte Original  
**6-1633965-4-F**

Descripción  
**CRIMPER WIRE**



No. Tooling Manufacturing  
**120-8-456134-0-BZ**

No. Parte Original  
**8-456134-0-BZ**

Descripción  
**CRIMPER WIRE**

No. Tooling Manufacturing  
**120-455658-1-H**

No. Parte Original  
**455658-1-H**

Descripción  
**ANVIL**



No. Tooling Manufacturing  
**120-4-1333202-8-DL**

No. Parte Original  
**4-1333202-8-DL**

Descripción  
**ANVIL**



No. Tooling Manufacturing  
**120-1-456402-8-AE**

No. Parte Original  
**1-456402-8-AE**

Descripción  
**CRIMPER WIRE.**

No. Tooling Manufacturing  
**120-1-1752057-8-G**

No. Parte Original  
**1-1752057-8-G**

Descripción  
**CRIMPER WIRE**



No. Tooling Manufacturing  
**120-3-1633730-2**

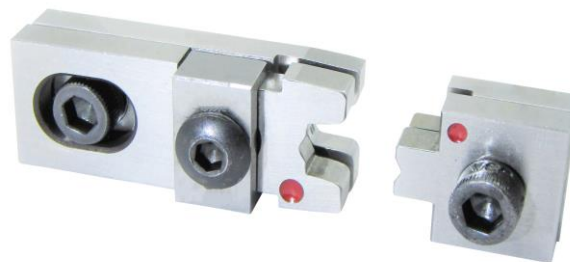
No. Parte Original  
**3-1633730-2**

Descripción  
**CRIMPER WIRE.**

No. Tooling Manufacturing  
**120-69872 C 1639**  
**32-16 PIDG 307275-9-L**  
**69872 C 1639**

No. Parte Original  
**69872 C 1639**  
**32-16 PIDG**  
**307275-9-L**  
**69872 C 1639**

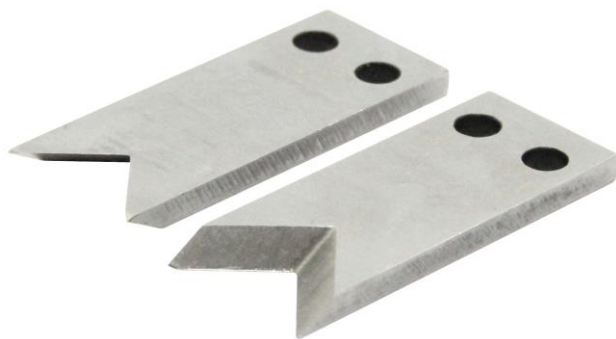
Descripción  
**KIT OF PATS 69872 C 1639**  
**32-16 PIDG 307275-9-L**  
**69872 C 1639**



No. Tooling Manufacturing  
**120-1-683403-3-AL**

No. Parte Original  
**1-683403-3-AL**

Descripción  
**ANVIL**



No. Tooling Manufacturing  
**120-016498**

No. Parte Original  
**016498**

Descripción  
**016498-V BLADES  
CARBIDE SET 2 PCS  
PARA MAQ. KOMAX**

No. Tooling Manufacturing  
**120-354004-8**

No. Parte Original  
**354004-8**

Descripción  
**ANVIL PARA  
REMACHADORA DE  
SPLICE 354004-8**



No. Tooling Manufacturing  
**120-1-354003-0-B**

No. Parte Original  
**1-354003-0-B**

Descripción  
**CRIMPER F**

No. Tooling Manufacturing  
**120-354005-4-E**

No. Parte Original  
**354005-4-E**

Descripción  
**NAVAJA P/REMACHADORA  
DE SPLICE**



No. Tooling Manufacturing  
**120-28464-71**

No. Parte Original  
**28464-71**

Descripción  
**O28464-71  
CRIMPER**



No. Tooling Manufacturing  
**120-28464-72**

No. Parte Original  
**28464-72**

Descripción  
**O28464-72**  
**CRIMPER**

No. Tooling Manufacturing  
**120-28464-73**

No. Parte Original  
**28464-73**

Descripción  
**O2846-73**  
**CRIMPER**



No. Tooling Manufacturing  
**120-28-464-74**

No. Parte Original  
**28-464-74**

Descripción  
**28-464-74**  
**CRIMPER**

No. Tooling Manufacturing  
**120-1803454-1-F.**

No. Parte Original  
**1803454-1-F.**

Descripción  
**1803454-1-F CRIMPER**



No. Tooling Manufacturing  
**120-3-456406-3-AE.**

No. Parte Original  
**3-456406-3-AE.**

Descripción  
**CRIMPER (2029)**



No. Tooling Manufacturing  
**120-8-1333205-1-ED**

No. Parte Original  
**8-1333205-1-ED**

Descripción  
**ANVIL COMBINATION**

No. Tooling Manufacturing  
**120-456408-5-T**

No. Parte Original  
**456408-5-T**

Descripción  
**CRIMPER**



No. Tooling Manufacturing  
**120-7-456408-6-AC**

No. Parte Original  
**7-456408-6-AC**

Descripción  
**CRIMPER**

No. Tooling Manufacturing  
**120-6-2119582-7-J**

No. Parte Original  
**6-2119582-7-J**

Descripción  
**CRIMPER**



No. Tooling Manufacturing  
**120-1803482-4-A**

No. Parte Original  
**1803482-4-A**

Descripción  
**CRIMPER**



No. Tooling Manufacturing  
**120-1-683403-3-AA**

No. Parte Original  
**1-683403-3-AA**

Descripción  
**ANVIL COMBINATION**

No. Tooling Manufacturing  
**120-0084667**

No. Parte Original  
**0084667**

Descripción  
**NAVAJAS DE CARBIDE  
KOMAX SET DE 2 PCS.**



No. Tooling Manufacturing  
**120-SPH-002T-P0-5L**

No. Parte Original  
**SPH-002T-P0-5L**

Descripción  
**CRIMPER DE  
FILAMENTOS**

No. Tooling Manufacturing  
**120-1118-4470/D**

No. Parte Original  
**1118-4470/D**

Descripción  
**D.S. 5/12 CUTTING  
BASE**



No. Tooling Manufacturing  
**120-1803042-1-C**

No. Parte Original  
**1803042-1-C**

Descripción  
**ANVIL**



No. Tooling Manufacturing  
**120-4-1633664-3-P**

No. Parte Original  
**4-1633664-3-P**

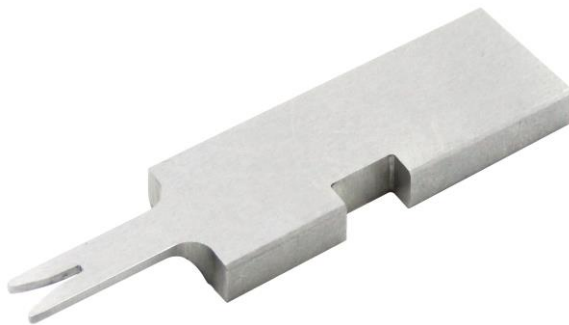
Descripción  
**CRIMPER**

---

No. Tooling Manufacturing  
**120-7-2119784-3-R**

No. Parte Original  
**7-2119784-3-R**

Descripción  
**CRIMPER INSULACION**



No. Tooling Manufacturing  
**120-6344410-03**  
**REV.F**

No. Parte Original  
**6344410-03**  
**REV.F**

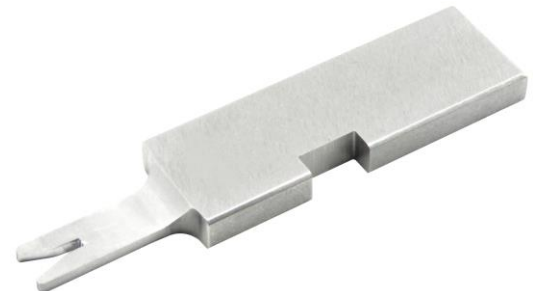
Descripción  
**CRIMPER**

---

No. Tooling Manufacturing  
**120-6344614-02**  
**REV.E**

No. Parte Original  
**6344614-02**  
**REV.E**

Descripción  
**CRIMPER**



No. Tooling Manufacturing  
**120-63406**

No. Parte Original  
**63406**

Descripción  
**CRIMPER**



No. Tooling Manufacturing  
**120-6344514-04**

No. Parte Original  
**6344514-04**

Descripción  
**ANVIL**

---

No. Tooling Manufacturing  
**120-6344510-10**

No. Parte Original  
**6344510-10**

Descripción  
**ANVIL**



No. Tooling Manufacturing  
**120-6344510-13**

No. Parte Original  
**6344510-13**

Descripción  
**ANVIL**

---

No. Tooling Manufacturing  
**120-634450821**

No. Parte Original  
**634450821**

**REV.E**

**REV.E**

Descripción

**ANVIL**



No. Tooling Manufacturing  
**120-634450718**

No. Parte Original  
**634450718**

**REV.A**

**REV.A**

Descripción

**ANVIL**



No. Tooling Manufacturing  
**120-27568911-11**

No. Parte Original  
**27568911-11**

Descripción  
**CRIMPER**

---

No. Tooling Manufacturing  
**120-27569004-12**

No. Parte Original  
**27569004-12**

Descripción  
**CRIMPER**



No. Tooling Manufacturing  
**120-634430005C**

No. Parte Original  
**634430005C**

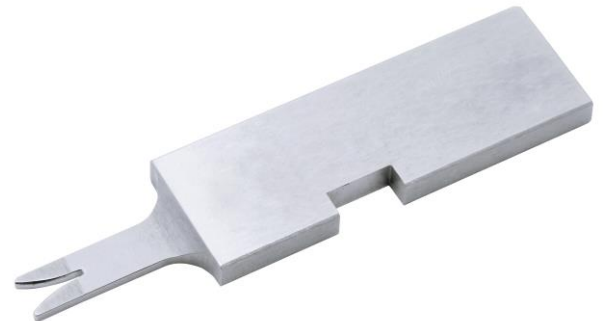
Descripción  
**(D.S.4/12) CUTTER  
FLOATING**

---

No. Tooling Manufacturing  
**120-6344608-08**  
**REV.F**

No. Parte Original  
**6344608-08**  
**REV.F**

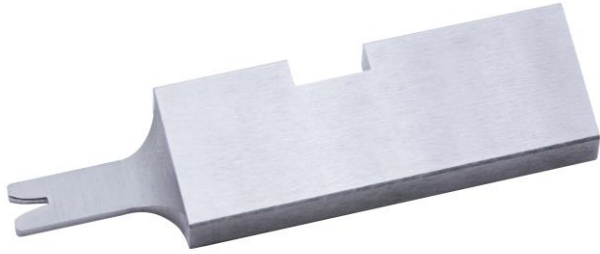
Descripción  
**(DDM 01-19-21)**  
**CRIMPER**



No. Tooling Manufacturing  
**120-6344614-30**

No. Parte Original  
**6344614-30**  
**REV.F**

Descripción  
**(DDM 8/28/12)**  
**CRIMPER (608)**



No. Tooling Manufacturing

**120-6344407-05**

**REV.C**

Descripción  
**(DDM 02-01-21)**

**CRIMPER**

No. Parte Original

**6344407-05 REV.C**

No. Tooling Manufacturing

**120-634451405**

**REV.F**

Descripción

**ANVIL**

No. Parte Original

**634451405 REV.F**



No. Tooling Manufacturing

**120-1-2119582-2-L**

Descripción

**CRIMPER**

No. Parte Original

**1-2119582-2-L**

No. Tooling Manufacturing

**120-5-456402-4-AU**

Descripción

**CRIMPER**

No. Parte Original

**5-456402-4-AU**



No. Tooling Manufacturing

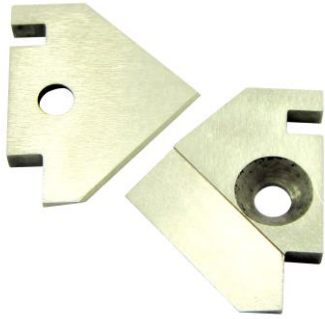
**120-4-1333201-0-EG**

Descripción

**ANVIL (608)**

No. Parte Original

**4-1333201-0-EG**



No. Tooling Manufacturing  
**120-16000-CT1**

No. Parte Original  
**16000-CT1**

Descripción  
**NAVAJA ROTATIVA  
SCHLEUNIGER 9500  
(SET DE 2 PCS)**

No. Tooling Manufacturing  
**120-CAT-1-456402-7**

No. Parte Original  
**CAT-1-456402-7**

Descripción  
**SN02419733 CRIMPER**



No. Tooling Manufacturing  
**120-1633468-5-C**

No. Parte Original  
**1633468-5-C**

Descripción  
**(2004) CRIMPER**

No. Tooling Manufacturing  
**120-CAT-1583502-5**

No. Parte Original  
**CAT-1583502-5**

Descripción  
**SN30120727**



No. Tooling Manufacturing  
**120-64685 6K20S8**

No. Parte Original  
**64685 6K20S8**

Descripción  
**CRIMPER (608)**





No. Tooling Manufacturing  
**120-63248 B11U2**

No. Parte Original  
**63248 B11U2**

Descripción  
**CRIMPER**

No. Tooling Manufacturing  
**120-C76776  
P96689**

No. Parte Original  
**C76776 P96689**

Descripción  
**ANVIL**



No. Tooling Manufacturing  
**120-C75529  
P97254**

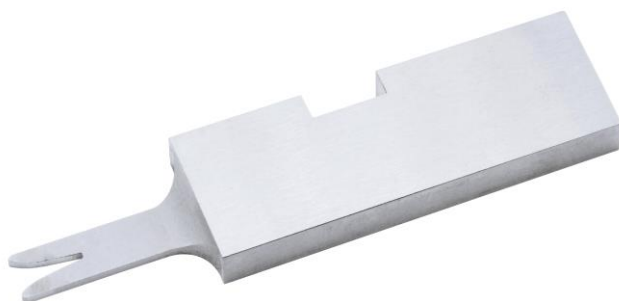
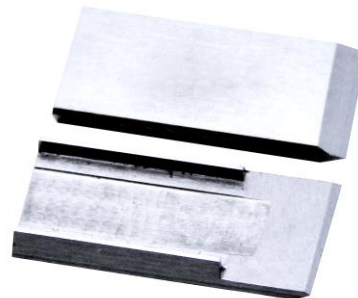
No. Parte Original  
**C75529 P97254**

Descripción  
**ANVIL**

No. Tooling Manufacturing  
**120-03361 SN  
187807**

No. Parte Original  
**03361 SN  
187807**

Descripción  
**SAW BLADE SET  
DE 2 PCS**



No. Tooling Manufacturing  
**120-6344408-04 RE.G**

No. Parte Original  
**6344408-04  
RE.G**

Descripción  
**CONDUCTOR PUCH  
(608)**



No. Tooling Manufacturing  
**120-63855**

No. Parte Original  
**63855**

Descripción  
**B11T6 CONDUCTOR  
PUNCH**

No. Tooling Manufacturing  
**120-C75195**

No. Parte Original  
**C75195**

Descripción  
**ANVIL CONDUCTOR**



No. Tooling Manufacturing  
**120-64438**

No. Parte Original  
**64438**

Descripción  
**P60332 PUNCH  
INSULATION**

No. Tooling Manufacturing  
**120-C76478**

No. Parte Original  
**C76478**

Descripción  
**ANVIL INSULATION**



No. Tooling Manufacturing  
**120-27647-500**

No. Parte Original  
**27647-500 S91S**

S91S  
Descripción  
**SHEAR BLADE (608)**



No. Tooling Manufacturing  
**120-27647 S91L**

No. Parte Original  
**27647 S91L**

Descripción  
**SHEAR BLADE**

No. Tooling Manufacturing  
**120-456400-9-N**

No. Parte Original  
**456400-9-N**

Descripción  
**(2220) CRIMPER  
FILAMENTOS**



No. Tooling Manufacturing  
**120-3-456135-0-CC**

No. Parte Original  
**3-456135-0-CC**

Descripción  
**(2143) CRIMPER  
INSULATION**

No. Tooling Manufacturing  
**120-805887-7-BP**

No. Parte Original  
**805887-7-BP**

Descripción  
**ANVIL  
COMBINATION**



No. Tooling Manufacturing  
**120-600-060-1**

No. Parte Original  
**600-060-1**

Descripción  
**NAVAJA PARA  
PINZA CORTADORA**



No. Tooling Manufacturing  
**120-634450806**

No. Parte Original  
**634450806**

Descripción  
**11/26/20 DDM ANVIL**

---

No. Tooling Manufacturing  
**120-634450810**  
**REV.E**

No. Parte Original  
**634450810 REV.E**

Descripción  
**12/21/20 DDM ANVIL**



No. Tooling Manufacturing  
**120-5-456135-7-BW**

No. Parte Original  
**5-456135-7-BW**

Descripción  
**(1141) CRIMPER**  
**INSULATION**

---

No. Tooling Manufacturing  
**120-662183-1-D**

No. Parte Original  
**662183-1-D**

Descripción  
**ANVIL**  
**COMBINATION**



No. Tooling Manufacturing  
**120-1-456402-5-AU**

No. Parte Original  
**1-456402-5-AU**

Descripción  
**(2230) CRIMPER**



No. Tooling Manufacturing  
**120-1-2119784-3-C**

No. Parte Original  
**1-2119784-3-C**

Descripción  
**FORMADOR**

---

No. Tooling Manufacturing  
**120-4-690512-9-AK**

No. Parte Original  
**4-690512-9-AK**

Descripción  
**ANVIL**



No. Tooling Manufacturing  
**120-8-456135-3-BW**

No. Parte Original  
**8-456135-3-BW**

Descripción  
**(1702) FORMADOR**

---

No. Tooling Manufacturing  
**120-73120**

No. Parte Original  
**73120**

Descripción  
**HOUSING**



No. Tooling Manufacturing  
**120-78010**

No. Parte Original  
**78010**

Descripción  
**BASE FOR SPRING**



No. Tooling Manufacturing  
**120-74690**

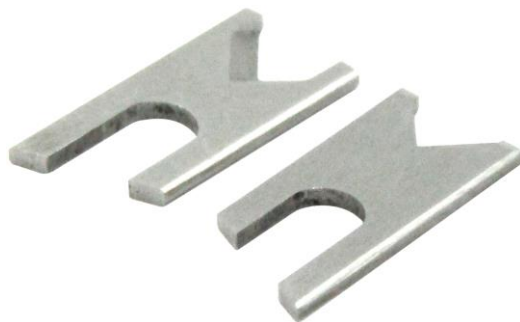
No. Parte Original  
**74690**

Descripción  
**CUTTER FLOATING**

No. Tooling Manufacturing  
**120-6344408-02**  
**REV.G**

No. Parte Original  
**6344408-02**  
**REV.G**

Descripción  
**CONDUCTOR PUNCH**



No. Tooling Manufacturing  
**120-04530**

No. Parte Original  
**04530**

Descripción  
**NAVAJAS**  
**SCHLEUNIGER 2015**  
**SET 2 PIEZAS**

No. Tooling Manufacturing  
**120-634430012F**

No. Parte Original  
**634430012F**

Descripción  
**D.S. 9/15 HOUSING**



No. Tooling Manufacturing  
**120-634430002F**

No. Parte Original  
**634430002F**

Descripción  
**D.S. 1/12 CUTTER**  
**FLOATING (608)**



No. Tooling Manufacturing  
**120-456401-3-AE**

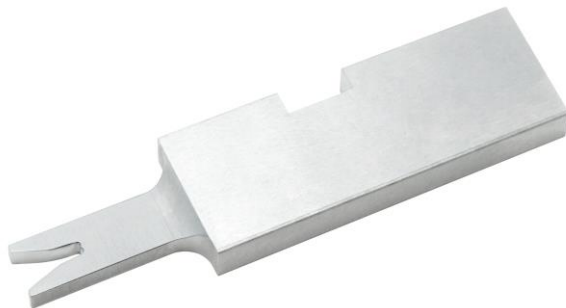
No. Parte Original  
**456401-3-AE**

Descripción  
**(2238) CRIMPER**

No. Tooling Manufacturing  
**120-904132-6-S**

No. Parte Original  
**904132-6-S**

Descripción  
**ANVIL COMBINATION**



No. Tooling Manufacturing  
**120-6344416-05**  
**REV.H**

No. Parte Original  
**6344416-05**  
**REV.H**

Descripción  
**DDM 06-08-21**  
**CRIMPER**

No. Tooling Manufacturing  
**120-634451641**

No. Parte Original  
**634451641 RV.J**

Descripción  
**DDM 8-28-15 ANVIL**



No. Tooling Manufacturing  
**120-634452835**

Descripción  
**DDM 6-23-15 ANVIL**

No. Parte Original  
**634452835 RV.E**



No. Tooling Manufacturing  
**120-6344628-27**

No. Parte Original  
**6344628-27**

Descripción  
**DDM 11-11-15  
CRIMPER**

No. Tooling Manufacturing  
**120-64006**

No. Parte Original  
**64006**

Descripción  
**PUNCH DE FILAMENTOS**



No. Tooling Manufacturing  
**120-C75685**

No. Parte Original  
**C75685**

Descripción  
**ANVIL DE  
FILAMENTOS**

No. Tooling Manufacturing  
**120-SPH-002T-P0.5L**

No. Parte Original  
**SPH-002T-P0.5L**

Descripción  
**ANVIL**



No. Tooling Manufacturing  
**120-456424-5-D**

No. Parte Original  
**456424-5-D**

Descripción  
**(1825) CRIMPER**



No. Tooling Manufacturing

**120-6344632-09**

**REV.E**

Descripción

**DDM3/1/10 CRIMPER**

No. Parte Original

**6344632-09 REV.E**

No. Tooling Manufacturing

**120-634453210**

**REV.B**

Descripción

**DDM 9.97 ANVIL**

No. Parte Original

**634453210 REV.B**



No. Tooling Manufacturing

**120-1338701-1-R**

Descripción

**ANVIL**

No. Parte Original

**1338701-1-R**

No. Tooling Manufacturing

**120-1633966-6-A**

Descripción

**CRIMPER (2048)**

No. Parte Original

**1633966-6-A**



No. Tooling Manufacturing

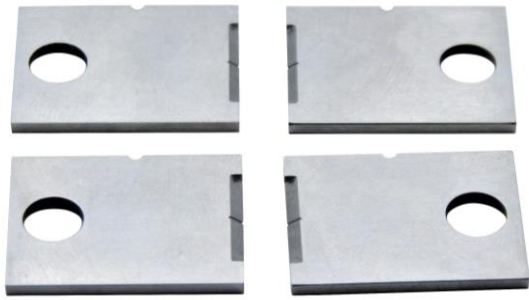
**120-3-456402-1-AU**

Descripción

**CRIMPER (608)**

No. Parte Original

**3-456402-1-AU**



No. Tooling Manufacturing  
**120-28AWG Ø1371-BL**

No. Parte Original  
**28AWG Ø1371-BL**

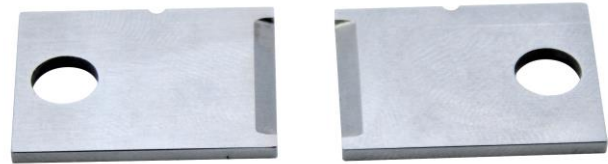
Descripción

**SHEAR BLADE STRIP A BOTTOM  
LEFT A TOP LEFT AA BOTTOM  
RIGHT SET DE 4 PIEZAS**

No. Tooling Manufacturing  
**120-BUTT CUT  
06906**

No. Parte Original  
**BUTT CUT 06906**

Descripción  
**SHEAR BLADE SET DE 2  
PIEZAS**



No. Tooling Manufacturing  
**120-28AWG  
Ø1371-BL**

No. Parte Original  
**28AWG Ø1371-BL**

Descripción

**GUIDE INSULATION A TOP LEFT  
THICKNESS .027 AA TOP RIGHT  
THICKNESS .0195 SET DE 2 PIEZAS**

No. Tooling Manufacturing  
**120-1-456135-7-BW**

No. Parte Original  
**1-456135-7-BW**

Descripción  
**CRIMPER  
INSULATION**



No. Tooling Manufacturing  
**120-C7489**

No. Parte Original  
**C7489**

Descripción  
**CUTTER FLOATING**



No. Tooling Manufacturing  
**120-C78010**

No. Parte Original  
**C78010**

Descripción  
**(MODIFICADO) BASE  
PARA RESORTE**

No. Tooling Manufacturing  
**120-C75055**

No. Parte Original  
**C75055**

Descripción  
**ANVIL**



No. Tooling Manufacturing  
**120-C73120**

No. Parte Original  
**C73120**

Descripción  
**HOLDER**

No. Tooling Manufacturing  
**120-C74370**

No. Parte Original  
**C74370**

Descripción  
**CUTTER FLOATING**



No. Tooling Manufacturing  
**120-11-18-5465**

No. Parte Original  
**11-18-5465**

Descripción  
**CRIMPER (608)**



No. Tooling Manufacturing  
**120-462006-1-AE**

No. Parte Original  
**462006-1-AE**

Descripción  
**CUTTER FLOATING**

No. Tooling Manufacturing  
**120-63821**

No. Parte Original  
**63821**

Descripción  
**CRIMPER DE FILAMENTOS**



No. Tooling Manufacturing  
**120-64671**

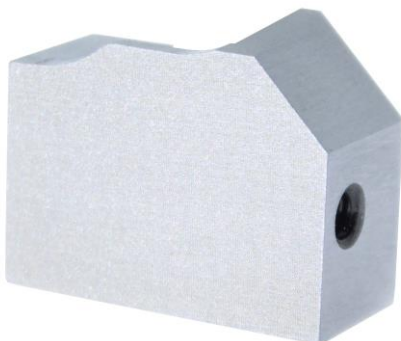
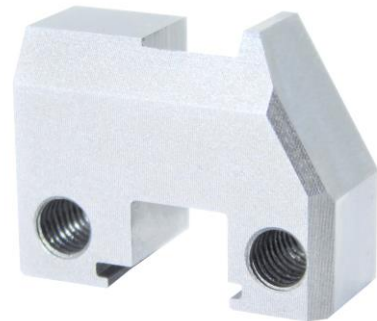
No. Parte Original  
**64671**

Descripción  
**CRIMPER DE INSULATION**

No. Tooling Manufacturing  
**120-C73431**

No. Parte Original  
**C73431**

Descripción  
**CUTTER HOUSING**



No. Tooling Manufacturing  
**120-690459-1-AB**

No. Parte Original  
**690459-1-AB**

Descripción  
**CUTTER HOUSING**



No. Tooling Manufacturing  
**120-6344512-13**

No. Parte Original  
**6344512-13**

Descripción  
**ANVIL DE  
INSULACION**

No. Tooling Manufacturing  
**120-6344519-24**

No. Parte Original  
**6344519-24**

Descripción  
**ANVIL**



No. Tooling Manufacturing  
**120-WA22**

No. Parte Original  
**WA22**

Descripción  
**MORDAZA**

No. Tooling Manufacturing  
**120-20.98**  
**96427420.30**

No. Parte Original  
**20.98**  
**96427420.30**

Descripción  
**CRIMPER.**



No. Tooling Manufacturing  
**120-1006-1**

No. Parte Original  
**1006-1**

Descripción  
**1006-1**



No. Tooling Manufacturing  
**120-1-1338690-1**

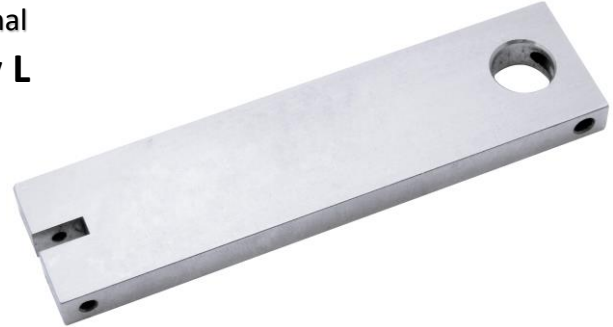
No. Parte Original  
**1-1338690-1**

Descripción  
**ANVIL**

No. Tooling Manufacturing  
**120-15006-9 Rev L**

No. Parte Original  
**15006-9 Rev L**

Descripción  
**N/A**



No. Tooling Manufacturing  
**120-21030-4-922**  
**REV Y**

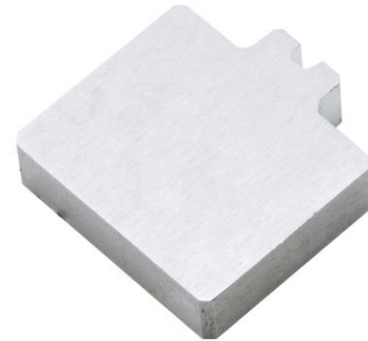
No. Parte Original  
**21030-4-922 REV Y**

Descripción  
**GUIA**

No. Tooling Manufacturing  
**120-1037K4353**

No. Parte Original  
**1037K4353**

Descripción  
**ANVIL**



No. Tooling Manufacturing  
**120-VIELA**

No. Parte Original  
**VIELA**

Descripción  
**VIELA**



No. Tooling Manufacturing  
**120-1006-14**

No. Parte Original  
**1006-14**

Descripción  
**CORTADOR**

No. Tooling Manufacturing  
**120-15025-4-92 REV AK**

No. Parte Original  
**15025-4-92 REV AK**



Descripción  
**15025-4-92 REV AK**

No. Tooling Manufacturing  
**120-15026-4-92 REV AF**

No. Parte Original  
**15026-4-92 REV AF**



Descripción  
**N/A**

No. Tooling Manufacturing  
**120-20.98**  
**1670146 1.55.26**

No. Parte Original  
**20.98 1670146**  
**1.55.26**

Descripción

**CRIMPER**



No. Tooling Manufacturing  
**120-20.99**  
**1670146-R 32.35**

No. Parte Original  
**20.99 1670146-**  
**R 32.35**

Descripción  
**CRIMPER**



No. Tooling Manufacturing  
**120-20.96**  
**1670146 (1.55.30)**

No. Parte Original  
**20.96 1670146**  
**(1.55.30)**

Descripción

**ANVIL**

No. Tooling Manufacturing  
**120-20.97-9.5-16.6**

No. Parte Original  
**20.97-9.5-16.6**

Descripción  
**CUTTER FLOATING**



No. Tooling Manufacturing  
**120-634541302**  
**REV.D**

No. Parte Original  
**634541302**  
**REV.D**

Descripción

**CRIMPER**

No. Tooling Manufacturing  
**120-634551005-**  
**REV.E**

No. Parte Original  
**634551005-REV.E**

Descripción

**ANVIL**



No. Tooling Manufacturing  
**120-634571004**  
**REV.D**

No. Parte Original  
**634571004**  
**REV.D**

Descripción

**CRIMPER (608)**



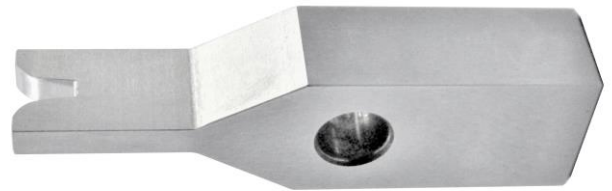
No. Tooling Manufacturing  
**120-634561302**  
**REV.G**

No. Parte Original  
**634561302 REV.G**

Descripción  
**ANVIL**

No. Tooling Manufacturing  
**120-AOE-BG06-01**  
**(H4633)**

No. Parte Original  
**AOE-BG06-01**  
**(H4633)**



Descripción  
**CRIMPER**



No. Tooling Manufacturing  
**120-AOE-BG06-05A**

No. Parte Original  
**AOE-BG06-05A**

Descripción  
**ANVIL**

No. Tooling Manufacturing  
**120-2-456407-0-R**

No. Parte Original  
**2-456407-0-R**



Descripción  
**CRIMPER**



No. Tooling Manufacturing  
**120-1633133-8-AH**

No. Parte Original  
**1633133-8-AH**

Descripción  
**ANVIL**  
**COMBINACION**



No. Tooling Manufacturing  
**120-00188-280CP**

No. Parte Original  
**00188-280CP**

Descripción  
**CRIMPER**

No. Tooling Manufacturing  
**120-00188-280CA**

No. Parte Original  
**00188-280CA**

Descripción  
**ANVIL**



No. Tooling Manufacturing  
**120-4-568176-3-AC**

No. Parte Original  
**4-568176-3-AC**

Descripción  
**CRIMPER**

No. Tooling Manufacturing  
**120-1-1803004-5-D**

No. Parte Original  
**1803004-5-D**

Descripción  
**ANVIL**



No. Tooling Manufacturing  
**120-2-1633609-8-F**

No. Parte Original  
**2-1633609-8-F**

Descripción  
**CRIMPER**



No. Tooling Manufacturing  
**120-3-1633928-7-Z**

No. Parte Original  
**3-1633928-7-Z**

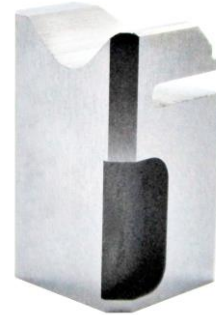
Descripción  
**ANVIL COMBINACION**

---

No. Tooling Manufacturing  
**120-1803095-5-G**

No. Parte Original  
**1803095-5-G**

Descripción  
**CUTTER FLOATING**



No. Tooling Manufacturing  
**120-454276-5-AN**

No. Parte Original  
**454276-5-AN**

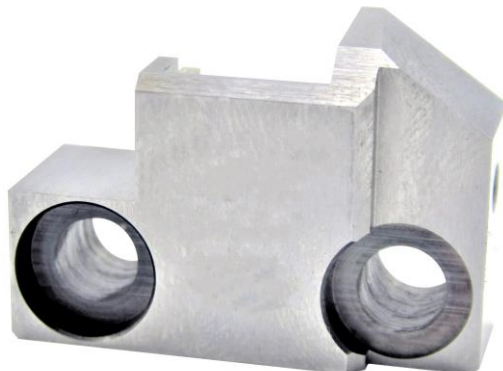
Descripción  
**CUTTER FLOAING**

---

No. Tooling Manufacturing  
**120-AOS-T30-04D**

No. Parte Original  
**AOS-T30-04D**

Descripción  
**CUTTER FLOATING**



No. Tooling Manufacturing  
**120-WLS-09-T30**

No. Parte Original  
**WLS-09-T30**

Descripción  
**HOUSING**



No. Tooling Manufacturing  
**120-1803223-9-F**

No. Parte Original  
**1803223-9-F**

Descripción  
**CRIMPER**

No. Tooling Manufacturing  
**120-7-1333201-3-PA**

No. Parte Original  
**7-1333201-3-PA**

Descripción  
**ANVIL**



No. Tooling Manufacturing  
**120-1-456402-5-AU**

No. Parte Original  
**1-456402-5-AU**

Descripción  
**CRIMPER**

No. Tooling Manufacturing  
**120-11-18-4110**  
**REV.B**

No. Parte Original  
**11-18-4110 REV.B**

Descripción  
**ANVIL**



No. Tooling Manufacturing  
**120-11-18-4108**  
**REV.G**

No. Parte Original  
**11-18-4108 REV.G**

Descripción  
**CRIMPER**



No. Tooling Manufacturing  
**120-690463-1-V.**

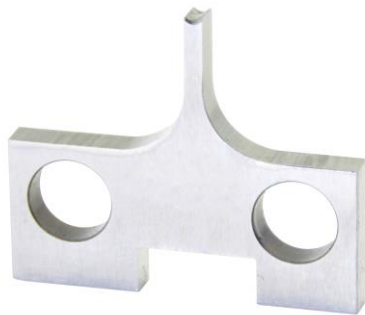
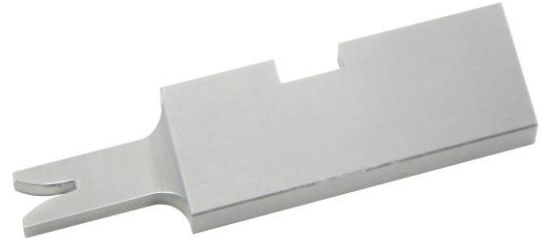
No. Parte Original  
**690463-1-V.**

Descripción  
**CUTTER FLOATING**

No. Tooling Manufacturing  
**120-634570037 REV.**

No. Parte Original  
**634570037 REV.**

Descripción  
**CRIMPER**



No. Tooling Manufacturing  
**120-634550051  
REV.A**

No. Parte Original  
**634550051 REV.A**

Descripción  
**ANVIL**

No. Tooling Manufacturing  
**120-456407-5-M.**

No. Parte Original  
**456407-5-M.**

Descripción  
**CRIMPER**



No. Tooling Manufacturing  
**120-1333206-1-CT.**

No. Parte Original  
**1333206-1-CT.**

Descripción  
**ANVIL  
COMBINATION**



No. Tooling Manufacturing  
**120-2-456409-8-U**

No. Parte Original  
**2-456409-8-U**

Descripción  
**CRIMPER**

---

No. Tooling Manufacturing  
**120-1-1803059-3-D.**

No. Parte Original  
**1-1803059-3-D.**

Descripción  
**ANVIL  
COMBINATION**



No. Tooling Manufacturing  
**120-4-1333281-1-K**

No. Parte Original  
**4-1333281-1-K**

Descripción  
**CRIMPER**

---

No. Tooling Manufacturing  
**120-1633928-7**

No. Parte Original  
**1633928-7**

Descripción  
**ANVIL  
COMBINATION**



No. Tooling Manufacturing  
**120-6344514-10  
REV.F**

No. Parte Original  
**6344514-10 REV.F**

Descripción  
**ANVIL**



No. Tooling Manufacturing

**120-6344410-04**

**REV.G**

Descripción

**CRIMPER**

No. Parte Original

**6344410-04 REV.G**

---

No. Tooling Manufacturing

**120-6344510-13**

**REV.D**

Descripción

**ANVIL**

No. Parte Original

**6344510-13 REV.D**



---

No. Tooling Manufacturing

**120-2-1583859-1**

Descripción

**SHEAR BLADE**

No. Parte Original

**2-1583859-1**



---

No. Tooling Manufacturing

**120-1752737-9-E**

Descripción

**CONTRA NAVAJA**

No. Parte Original

**1752737-9-E**



---

No. Tooling Manufacturing

**120-99.1.46.3834**

**S23 MB002**

**OP.104143**

Descripción

**CRIMPER**

No. Parte Original

**99.1.46.3834 S23 MB002**

**OP.104143**





No. Tooling Manufacturing  
**120-91.1.27.5776**  
**E21 MB001**  
**0P.075194**

No. Parte Original  
**91.1.27.5776 E21**  
**MB001 0P.075194**

Descripción  
**ANVIL**

No. Tooling Manufacturing  
**120-1803019-5-U.**

No. Parte Original  
**1803019-5-U.**



Descripción  
**CRIMPER**



No. Tooling Manufacturing  
**120-1-1803293-3-C.**

No. Parte Original  
**1-1803293-3-C.**

Descripción  
**ANVIL**

No. Tooling Manufacturing  
**120-1803364-2-B.**

No. Parte Original  
**1803364-2-B.**



Descripción  
**CRIMPER**



No. Tooling Manufacturing  
**120-00269-345-CP**

No. Parte Original  
**00269-345-CP**

Descripción  
**CRIMPER**



No. Tooling Manufacturing  
**120-00269-345-CA**

No. Parte Original  
**00269-345-CA**

Descripción  
**ANVIL**

---

No. Tooling Manufacturing  
**120-61863-1**

No. Parte Original  
**61863-1**

Descripción  
**CRIMPER**



No. Tooling Manufacturing  
**120-6-1803171-2-AH.**

No. Parte Original  
**6-1803171-2-AH.**

Descripción  
**ANVIL COMBINATION**

---

No. Tooling Manufacturing  
**120-8-1633588-1-Z.**

No. Parte Original  
**8-1633588-1-Z.**

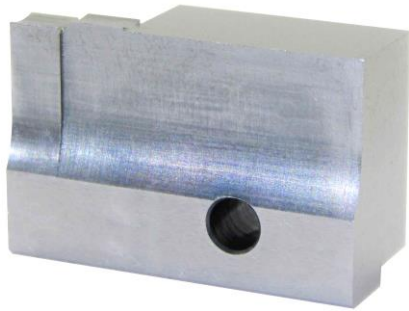
Descripción  
**CRIMPER**



No. Tooling Manufacturing  
**120-6-1633703-0-BA.**

No. Parte Original  
**6-1633703-0-BA.**

Descripción  
**ANVIL  
CPMBINATION**



No. Tooling Manufacturing  
**120-2844939-3-D**

No. Parte Original  
**2844939-3-D**

Descripción  
**ANVIL COMBINATION**

---

No. Tooling Manufacturing  
**120-6344614-06**  
**REV.F**

No. Parte Original  
**6344614-06**  
**REV.F**

Descripción  
**CRIMPER**



No. Tooling Manufacturing  
**120-240644-1-D**

No. Parte Original  
**240644-1-D**

Descripción  
**PLATE-REAR SHEAR**

---

No. Tooling Manufacturing  
**120-456134-5-BZ**

No. Parte Original  
**456134-5-BZ**

Descripción  
**CRIMPER**



No. Tooling Manufacturing  
**120-401.9533**

No. Parte Original  
**401.9533**

Descripción  
**Ø3.50 Saw Blade**  
**Schleuniger (Set de 2 pcs)**



No. Tooling Manufacturing  
**120-401.9578**

No. Parte Original  
**401.9578**

Descripción  
**Ø8.0MM SAW BLADE  
SCHLEUNIGER (SET DE  
2 PCS)**

No. Tooling Manufacturing  
**120-2-456134-9-BZ**

No. Parte Original  
**2-456134-9-BZ**

Descripción  
**CRIMPER**



No. Tooling Manufacturing  
**120-2-456402-4-UA**

No. Parte Original  
**2-456402-4-UA**

Descripción  
**CRIMPER**

No. Tooling Manufacturing  
**120-2-662183-5K**

No. Parte Original  
**2-662183-5K**

Descripción  
**ANVIL**



No. Tooling Manufacturing  
**120-M21-4182-  
1000 991464474**

No. Parte Original  
**M21-4182-1000  
991464474**

Descripción  
**CRIMPER**



No. Tooling Manufacturing  
**120-991275796**  
**M21-4182-1090**  
Descripción

No. Parte Original  
**991275796**  
**M21-4182-1090**

**ANVIL**

No. Tooling Manufacturing  
**120-M21-4182-1010**  
**991452680**  
Descripción  
**CRIMPER**

No. Parte Original  
**M21-4182-1010**  
**991452680**



No. Tooling Manufacturing  
**120-456411-3**  
**REV.D**

No. Parte Original  
**456411-3 REV.D**

Descripción  
**CRIMPER**

No. Tooling Manufacturing  
**120-6344414-21**  
**REV.E**

No. Parte Original  
**6344414-21 REV.E**

Descripción

**CRIMPER**



No. Tooling Manufacturing  
**120-634451441**  
**REV.F**

No. Parte Original  
**634451441**  
**REV.F**

Descripción  
**ANVIL**



No. Tooling Manufacturing  
**120-76420**

No. Parte Original  
**76420**

Descripción  
**ANVIL**

---

No. Tooling Manufacturing  
**120-12139983**

No. Parte Original  
**12139983**

Descripción  
**CUTTER FLOATING**



No. Tooling Manufacturing  
**120-690493-6**

No. Parte Original  
**690493-6**

Descripción  
**ANVIL**

---

No. Tooling Manufacturing  
**120-5-1633129-0-BK**

No. Parte Original  
**5-1633129-0-BK**

Descripción  
**ANVIL**



No. Tooling Manufacturing  
**120-11-18-5217**  
**REV.B**

No. Parte Original  
**11-18-5217**  
**REV.B**

Descripción  
**ANVIL**

---



No. Tooling Manufacturing  
**120-11-18-5216**  
**REV.A**

No. Parte Original  
**11-18-5216 REV.A**

Descripción  
**CRIMPER**

No. Tooling Manufacturing  
**120-75790 (P42280)**

No. Parte Original  
**75790 (P42280)**

Descripción  
**ANVIL**



No. Tooling Manufacturing  
**120-00190-064CA**

No. Parte Original  
**00190-064CA**

Descripción  
**ANVIL**

No. Tooling Manufacturing  
**120-2-456401-1-AE**

No. Parte Original  
**2-456401-1-AE**

Descripción  
**CRIMPER**



No. Tooling Manufacturing  
**120-00190-072IP**

No. Parte Original  
**00190-072IP**

Descripción  
**CRIMPER**



No. Tooling Manufacturing

**120-9-803653-9-BA**

No. Parte Original

**9-803653-9-BA**

Descripción

**ANVIL**

No. Tooling Manufacturing

**120-4-456134-6-BD**

No. Parte Original

**4-456134-6-BD**

Descripción

**CRIMPER**



No. Tooling Manufacturing

**120-4-461295-0-R**

No. Parte Original

**4-461295-0-R**

Descripción

**ANVIL**

No. Tooling Manufacturing

**120-2-456406-0-AE**

No. Parte Original

**2-456406-0-AE**

Descripción

**CRIMPER**



No. Tooling Manufacturing

**120-456411-3**

No. Parte Original

**456411-3**

Descripción

**CRIMPER**



No. Tooling Manufacturing No. Parte Original

**120-690493-6**

**690493-6**

Descripción

**ANVIL**

No. Tooling Manufacturing No. Parte Original

**120-1-456402-1-G**

**1-456402-1-G**

Descripción

**CRIMPER**



No. Tooling Manufacturing No. Parte Original

**120-805278-1-A**

**805278-1-A**

Descripción

**ANVIL**

No. Tooling Manufacturing No. Parte Original

**120-7-456134-3-N**

**7-456134-3-N**

Descripción

**CRIMPER**



No. Tooling Manufacturing No. Parte Original

**120-00 47165**

**00 47165**

Descripción

**PUNCH PLATE**





No. Tooling Manufacturing No. Parte Original  
**120-WFD-DHD13-01D MD-25** **WFD-DHD13-01D MD-25**

Descripción  
**N/A**

No. Tooling Manufacturing No. Parte Original  
**120-1803188-1-P** **1803188-1-P**

Descripción  
**CRIMPER**



No. Tooling Manufacturing No. Parte Original  
**120-AOS-AH03-05A** **AOS-AH03-05A**

Descripción  
**ANVIL**



No. Tooling Manufacturing No. Parte Original  
**120-AOS-AH03-02** **AOS-AH03-02**

Descripción  
**CRIMPER**



No. Tooling Manufacturing No. Parte Original  
**120-AOS-AH03-05B** **AOS-AH03-05B**

Descripción  
**ANVIL**





No. Tooling Manufacturing

**120-2-1633713-6-Z**

No. Parte Original

**2-1633713-6-Z**

Descripción

**CRIMPER**

No. Tooling Manufacturing

**120-1803293-2-A**

No. Parte Original

**1803293-2-A**

Descripción

**ANVIL**



No. Tooling Manufacturing

**120-2077713-1**

No. Parte Original

**2077713-1**

Descripción

**SHEAR BLADE**

No. Tooling Manufacturing

**120-2077712-1**

No. Parte Original

**2077712-1**

Descripción

**SHEAR BLADE**



No. Tooling Manufacturing

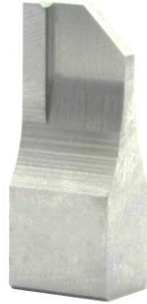
**120-7-1633962-4**

No. Parte Original

**7-1633962-4**

Descripción

**CRIMPER**



No. Tooling Manufacturing

**120-1338691-1-B.**

No. Parte Original

**1338691-1-B.**

Descripción

**ANVIL**

No. Tooling Manufacturing

**120-1633860-3-V.**

No. Parte Original

**1633860-3-V.**

Descripción

**CRIMPER**



No. Tooling Manufacturing

**120-991460384**

No. Parte Original

**991460384**

Descripción

**CRIMPER**

No. Tooling Manufacturing

**120-991450600**

No. Parte Original

**991450600**

Descripción

**CRIMPER**



No. Tooling Manufacturing

**120-991271103**

No. Parte Original

**991271103**

Descripción

**ANVIL**



No. Tooling Manufacturing

**120-991271104**

No. Parte Original

**991271104**

Descripción

**ANVIL**

No. Tooling Manufacturing

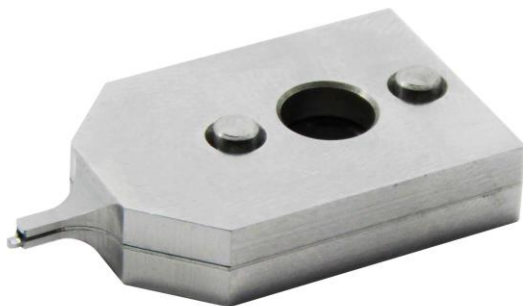
**120-60372-1-CP**

No. Parte Original

**60372-1-CP**

Descripción

**CRIMPER**



No. Tooling Manufacturing

**120-CAB-131123-  
FRONT/BACK**

No. Parte Original

**CAB-131123-  
FRONT/BACK**

Descripción

**Cabezal Signal  
Juego completo**

No. Tooling Manufacturing

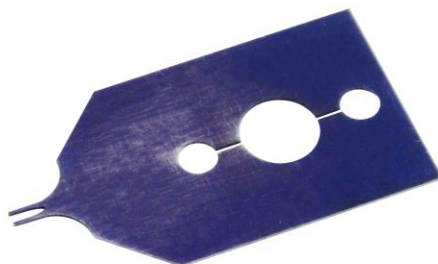
**120-CAB-131123-FRONT**

No. Parte Original

**CAB-131123-FRONT**

Descripción

**Cabezal Signal**



No. Tooling Manufacturing

**120-LAG-131123-010**

No. Parte Original

**LAG-131123-010**

Descripción

**N/A**



No. Tooling Manufacturing No. Parte Original

**120-CAB-131123-  
BACK**

**CAB-131123-  
BACK**

Descripción  
**Cabezal Signal**

No. Tooling Manufacturing

No. Parte Original

**120-CAB-181023-  
FRONT/BACK**

**CAB-181023-  
FRONT/BACK**

Descripción

**Cabezal Ground  
Juego completo**



No. Tooling Manufacturing

No. Parte Original

**120-CAB-181023-  
FRONT**

**CAB-181023-  
FRONT**

Descripción

**Cabezal Ground Front**



No. Tooling Manufacturing

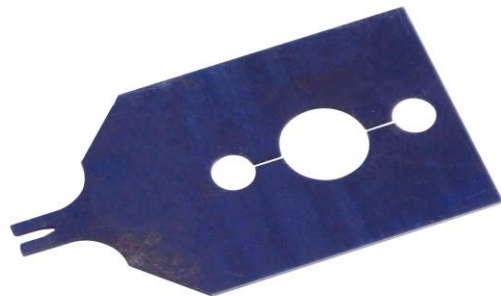
No. Parte Original

**120-LAG-181023-010**

**LAG-181023-010**

Descripción

**Laina Ground**



No. Tooling Manufacturing

No. Parte Original

**120-CAB-181023-BACK**

**CAB-181023-BACK**

Descripción

**Cabezal Ground**





No. Tooling Manufacturing No. Parte Original

**120-416075**

**416075**

Descripción

**Ø13.0MM Shear  
Blade Set de 2 piezas**

No. Tooling Manufacturing No. Parte Original

**120-991271827**

**991271827**

**M20-1391**

**M20-1391**

Descripción

**Anvil**



No. Tooling Manufacturing No. Parte Original

**120-CD-800C-2**

**CD-800C-2**

Descripción

**Formador**

No. Tooling Manufacturing No. Parte Original

**120-CD-800C-3**

**CD-800C-3**

Descripción

**Formador**



No. Tooling Manufacturing No. Parte Original

**120-CD-800C-11**

**CD-800C-11**

Descripción

**Formador**



No. Tooling Manufacturing

**120-CD-800C-13**

No. Parte Original

**CD-800C-13**

Descripción

**Formador**

No. Tooling Manufacturing

**120-M20-2563**

**991460142**

No. Parte Original

**M20-2563**

**991460142**

Descripción

**Conductor Crimper**



No. Tooling Manufacturing

**120-991270192**

**M17-3650**

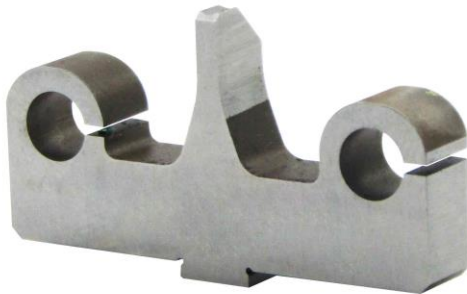
No. Parte Original

**991270192 M17-**

**3650**

Descripción

**Combination Anvil**



No. Tooling Manufacturing

**120-M20-2564**

**991450204**

No. Parte Original

**M20-2564**

**991450204**

Descripción

**Insulation Crimper**



No. Tooling Manufacturing

**120-991270193**

**M17-2380**

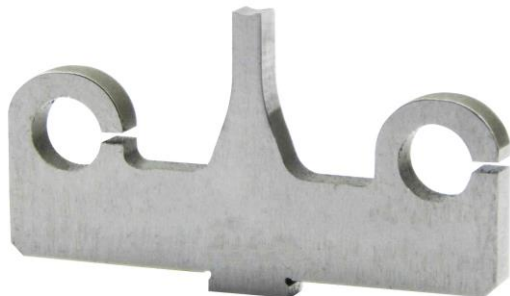
No. Parte Original

**991270193**

**M17-2380**

Descripción

**Insulante Anvil**





No. Tooling Manufacturing No. Parte Original

**120-CD-800-2**

**CD-800-2**

Descripción

**Conductor Punch**

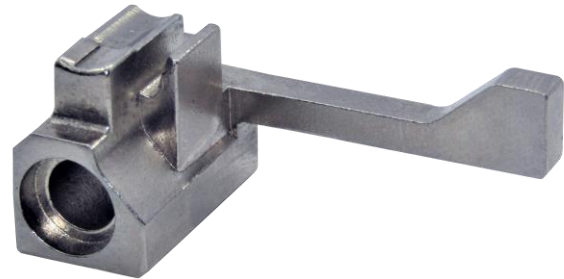
No. Tooling Manufacturing No. Parte Original

**120-C-1**

**C-1**

Descripción

**Combination Anvil**



No. Tooling Manufacturing No. Parte Original

**120-428037**

**428037**

Descripción

**Navaja 2mm Set  
de 2 pcs**

No. Tooling Manufacturing

**120-991460142 A25**

No. Parte Original

**991460142 A25**

Descripción

**CONDUCTOR CRIMPER**



No. Tooling Manufacturing

**120-01633-295CP**

No. Parte Original

**01633-295CP**

Descripción

**Conductor Crimper**



No. Tooling Manufacturing No. Parte Original

**120-634540069**

**634540069**

**REV.G**

**REV.G**

Descripción

**DDM 2/18/09**

**Crimper**

No. Tooling Manufacturing

No. Parte Original

**120-2-1633730-4-Z**

**2-1633730-4-Z**

Descripción

**Crimper**



No. Tooling Manufacturing

No. Parte Original

**120-1-1633305-7-B**

**1-1633305-7-B**

Descripción

**Conductor Crimper**

No. Tooling Manufacturing

No. Parte Original

**120-1-1633703-8-BE**

**1-1633703-8-BE**

Descripción

**Combination Anvil**



No. Tooling Manufacturing

No. Parte Original

**120-1803954-1-A**

**1803954-1-A**

Descripción

**Conductor Crimper**



No. Tooling Manufacturing

**120-4-1803763-2-P**

No. Parte Original

**4-1803763-2-P**

Descripción

**Combination Anvil**

No. Tooling Manufacturing

**120-2-1803454-8-F**

No. Parte Original

**2-1803454-8-F**



Descripción

**Conductor Crimper**



No. Tooling Manufacturing

**120-1-1803703-6-AL**

No. Parte Original

**1-1803703-6-AL**

Descripción  
**Combination  
Anvil**

No. Tooling Manufacturing

**120-1803019-4-F**

No. Parte Original

**1803019-4-F**



Descripción

**Insulation Crimper**



No. Tooling Manufacturing

**120-456413-6-G**

No. Parte Original

**456413-6-G**

Descripción

**CRIMPER**



No. Tooling Manufacturing No. Parte Original

**120-047175**

**047175**

Descripción

**PIN PARA GROMMET CELLO**

No. Tooling Manufacturing No. Parte Original

**120-456410-4-Y**

**456410-4-Y**

Descripción

**Conductor Crimper**



No. Tooling Manufacturing No. Parte Original

**120-2-2119784-8-L**

**2-2119784-8-L**

Descripción

**Insulation Crimper**



No. Tooling Manufacturing No. Parte Original

**120-1333229-1-AW**

**1333229-1-AW**

Descripción

**Combination Anvil**



No. Tooling Manufacturing No. Parte Original

**120-275628 05-18**

**275628 05-18**

Descripción

**Insulation Crimper**





No. Tooling Manufacturing

**120-275629 05-18**

No. Parte Original

**275629 05-18**

Descripción

**Conductor Crimper**

No. Tooling Manufacturing

**120-275284 05-21**

No. Parte Original

**275284 05-21**

Descripción

**Conductor Anvil**



No. Tooling Manufacturing

**120-275630 05-21**

No. Parte Original

**275630 05-21**

Descripción

**Insulation Anvil**

No. Tooling Manufacturing

**120-2119582-3-D**

No. Parte Original

**2119582-3-D**

Descripción

**Insulation Crimper**



No. Tooling Manufacturing

**120-00637-105CA**

No. Parte Original

**00637-105CA**

Descripción

**Anvil Conductor**



No. Tooling Manufacturing No. Parte Original  
**120-00637-105CP 00637-105CP**

Descripción

**Crimper**

No. Tooling Manufacturing  
**120-RS831067609-1**

No. Parte Original  
**RS831067609-1**

Descripción  
**Crimper**



No. Tooling Manufacturing No. Parte Original  
**120-RS831067608-1 RS831067608-1**

Descripción

**Crimper Insulation**

No. Tooling Manufacturing  
**120-RS831067621-1**

No. Parte Original  
**RS831067621-1**

Descripción

**Anvil Conductor**



No. Tooling Manufacturing No. Parte Original  
**120-RS831067622-1 RS831067622-1**

Descripción

**Anvil Insulation**



No. Tooling Manufacturing    No. Parte Original  
**120-6344410-03**            **6344410-03**  
**REV.G**                            **REV.G**  
Descripción

**CRIMPER DDM 03-15-24**

No. Tooling Manufacturing    No. Parte Original  
**120-6344614-30**            **6344614-30**  
**REV.F**                            **REV.F**

Descripción

**CRIMPER DDM 03-15-24**



No. Tooling Manufacturing    No. Parte Original  
**120-634451013**            **634451013 REV.D**  
**REV.D**  
Descripción  
**ANVIL**



No. Tooling Manufacturing    No. Parte Original  
**120-634451405**            **634451405 REV.F**  
**REV.F**

Descripción

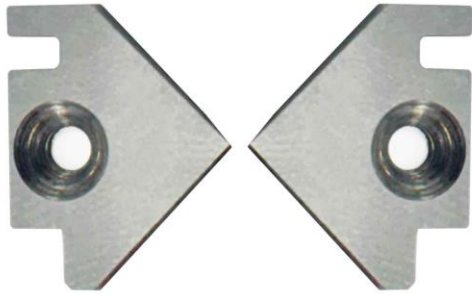
**ANVIL**



No. Tooling Manufacturing    No. Parte Original  
**120-ES-005117**            **ES-005117**

Descripción

**MORDAZAS DESPOJADORAS**



No. Tooling Manufacturing No. Parte Original

**120-R-ZM-WJCPS**

**R-ZM-WJCPS**

Descripción

**SHEAR BLADE (SET DE 2 PCS)**

No. Tooling Manufacturing No. Parte Original

**120-WG-8515-C**

**WG-8515-C**

Descripción

**CENTRALIZADORES (SET DE 4 PCS)**



No. Tooling Manufacturing No. Parte Original

**120-19426 S95L**

**19426 S95L**

Descripción

**STRIP BLADE TOOL STEEL (EACH)**



No. Tooling Manufacturing No. Parte Original

**120-19428 S95S**

**19428 S95S**

Descripción

**STRIP BLADE TOOL STEEL (EACH)**



No. Tooling Manufacturing

No. Parte Original

**120-7-240693-2-AL**

**7-240693-2-AL**

Descripción

**COMBINATION**





No. Tooling Manufacturing

**120-2-904132-4-S**

No. Parte Original

**2-904132-4-S**

Descripción

**ANVIL**

No. Tooling Manufacturing

**120-401.9008**

**009713**

No. Parte Original

**401.9008**

**009713**

Descripción

**(Set de 2 pcs) SAW BLADE**



No. Tooling Manufacturing

**120-MD-50-01-CC**

No. Parte Original

**MD-50-01-CC**

Descripción

**Crimper Conductor**



No. Tooling Manufacturing

**120-MD-50-02-AC**

No. Parte Original

**MD-50-02-AC**

Descripción

**Anvil Conductor**



No. Tooling Manufacturing

**120-MD-50-03-CI**

No. Parte Original

**MD-50-03-CI**

Descripción

**Crimper Insulation**





No. Tooling Manufacturing

**120-MD-50-04-AI**

No. Parte Original

**MD-50-04-AI**

Descripción

**Anvil Insulation**

No. Tooling Manufacturing

**120-318059-4**

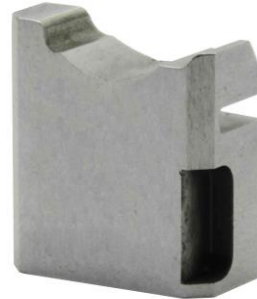
**REV.N**

Descripción

**CUTTER FLOATING**

No. Parte Original

**318059-4 REV.N**



No. Tooling Manufacturing

**120-59826-1**

**A1230816**

Descripción

**CONDUCTOR ANVIL**

No. Parte Original

**59826-1 A1230816**



No. Tooling Manufacturing

**120-307275-9-L**

Descripción

**GUIDE**

No. Parte Original

**307275-9-L**



No. Tooling Manufacturing

**120-69826-1**

Descripción

**ANVIL INSULATION**

No. Parte Original

**69826-1 A9749**





No. Tooling Manufacturing No. Parte Original

**120-22-18 PIDG**

**22-18 PIDG**

Descripción

**CRIMPER INSULATION**

No. Tooling Manufacturing No. Parte Original

**120-59826-1**

**59826-1**

**A1230816**

**A1230816**

**A1228816**

**A1228816**

Descripción

**CRIMPER CONDUCTOR**



No. Tooling Manufacturing No. Parte Original

**120-59826-1**

**59826-1**

Descripción

**TOOL TETRA-CRIMP  
DEI 22-18AWG**



No. Tooling Manufacturing No. Parte Original

**120-MORDAZA  
P/C20**

**MORDAZA P/C20**

Descripción

**MORDAZA P/C20**



No. Tooling Manufacturing

**120-HBQ-G100-111B**

No. Parte Original

**HBQ-G100-111B**

Descripción

**NAVAJA DESPOJADORA HACINT**



No. Tooling Manufacturing

**120-458537-2-G**

No. Parte Original

**458537-2-G**

Descripción

**UÑA DE ARRASTRE**

No. Tooling Manufacturing

**120-8-1803751-3**

No. Parte Original

**8-1803751-3**

Descripción

**COMBINATION ANVIL**

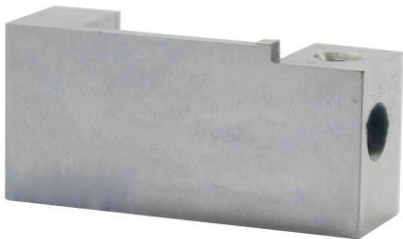


No. Tooling Manufacturing

**120-2119805-2 REV.W**

No. Parte Original

**2119805-2 REV.W**



Descripción

**HOUSING CUTTER**

No. Tooling Manufacturing

**120-634551005 REV.F**

No. Parte Original

**634551005 REV.F**

Descripción

**ANVIL**



No. Tooling Manufacturing

**120-1333231-2-AD**

No. Parte Original

**1333231-2-AD**



Descripción

**ANVIL COMBINATION**



No. Tooling Manufacturing  
**120-5-456403-0-AG**

No. Parte Original  
**5-456403-0-AG**

Descripción

**CRIMPER CONDUCTOR**

No. Tooling Manufacturing

**120-2-456404-1-AW**

No. Parte Original

**2-456404-1-AW**

Descripción

**CRIMPER**



No. Tooling Manufacturing

**120-1803364-3-B**

No. Parte Original

**1803364-3-B**

Descripción

**(2217) (2444)**

**Crimper**



No. Tooling Manufacturing

**120-6-1633139-7-DA.**

No. Parte Original

**6-1633139-7-DA.**

Descripción

**Anvil**



No. Tooling Manufacturing

**120-911275544**

**M20-1877-1140**

No. Parte Original

**911275544**

**M20-1877-1140**

Descripción

**Conductor Anvil**





No. Tooling Manufacturing  
**120-991463499 N23**

No. Parte Original  
**991463499 N23**

Descripción  
**Conductor Punch**

No. Tooling Manufacturing  
**120-CGA-024M-  
KYUNGSHING**

No. Parte Original  
**CGA-024M-KYUNGSHING**



Descripción  
**CUTTER FLOATING**



No. Tooling Manufacturing  
**120-4-1633933-3-S**

No. Parte Original  
**4-1633933-3-S**

Descripción  
**Anvil**

No. Tooling Manufacturing  
**120-91.1.33.0358 P22 BR**

No. Parte Original  
**91.1.33.0358 P22 BR**



Descripción  
**OP.089873 CUTTER FLOATING**



No. Tooling Manufacturing  
**120-122391-2 260142**

No. Parte Original  
**122391-2 260142**

Descripción  
**Set de 3 piezas**



No. Tooling Manufacturing

**120-6-456402-8-AU**

No. Parte Original

**6-456402-8-AU**

Descripción  
**(2344) Conductor**

No. Tooling Manufacturing

**120-6-1633917-1-AY**

No. Parte Original

**6-1633917-1-AY**

Descripción

**Combination Anvil**



No. Tooling Manufacturing

**120-1803537-7-V**

No. Parte Original

**1803537-7-V**

Descripción  
**Anvil**

No. Tooling Manufacturing

**120-6-456402-8-  
KYUNGSHIN**

No. Parte Original

**6-456402-8-  
KYUNGSHIN**

Descripción

**Conductor Crimper**



No. Tooling Manufacturing

**120-5E0041 REV.A**

No. Parte Original

**5E0041 REV.A**

Descripción

**Conductor Anvil**





No. Tooling Manufacturing

**120-4E0041 REV.A**

No. Parte Original

**4E0041 REV.A**

Descripción

**Conductor Crimper**

No. Tooling Manufacturing

**120-R8667-WC-B**

No. Parte Original

**R8667-WC-B**

Descripción

**Crimper**



No. Tooling Manufacturing

**120-5E0043 REV.A**

No. Parte Original

**5E0043 REV.A**

Descripción

**Conductor Anvil**

No. Tooling Manufacturing

**120-4E0043 REV.A**

No. Parte Original

**4E0043 REV.A**

Descripción

**Conductor Punch**



No. Tooling Manufacturing

**120-3-1803224-5-U**

No. Parte Original

**3-1803224-5-U**

Descripción

**(2438) Conductor Crimper**



No. Tooling Manufacturing

**120-1-1333201-9-S**

No. Parte Original

**1-1333201-9-S**

Descripción

**Combination Anvil**

No. Tooling Manufacturing

**120-4E0032 REV.A**

No. Parte Original

**4E0032 REV.A**

Descripción

**E11392 MOP. REV.A**



No. Tooling Manufacturing

**120-34230-0003 IN/C**

No. Parte Original

**34230-0003 IN/C**

Descripción

**Insulation  
Crimper**

No. Tooling Manufacturing

**120-34230-0003 IN/A**

No. Parte Original

**34230-0003 IN/A**

Descripción

**Insulation Anvil**



No. Tooling

**120-1-1803655-9-R**

No. Parte Original

**1-1803655-9-R**

Descripción

**Combination Anvil**



No. Tooling Manufacturing No. Parte Original

**120-1333281-4-K**

**1333281-4-K**

Descripción

**Crimper Conductor**

No. Tooling Manufacturing

**120-2-1633621-6-AB**

No. Parte Original

**2-1633621-6-AB**

Descripción

**Anvil Combination**



No. Tooling Manufacturing

**120-1-456402-7-  
AU (2449)**

No. Parte Original

**1-456402-7-AU  
(2449)**

Descripción

**Conductor Crimper**

No. Tooling Manufacturing

**120-R9304-WA**

No. Parte Original

**R9304-WA**

Descripción

**Conductor Anvil**



No. Tooling Manufacturing

**120-R9304-WC**

No. Parte Original

**R9304-WC**

Descripción

**Coductor Crimper**



No. Tooling Manufacturing

**120-R9011-WC-A**

No. Parte Original

**R9011-WC-A**

Descripción

**Conductor Crimper**

No. Tooling Manufacturing

**120-4-1803396-0-R**

No. Parte Original

**4-1803396-0-R**

Descripción

**CONDUCTOR CRIMPER**



No. Tooling Manufacturing

**120-7-1333201-4-NE**

No. Parte Original

**7-1333201-4-NE**

Descripción

**ANVIL  
COMBINATION**



No. Tooling Manufacturing

**120-3-1803767-5-K**

No. Parte Original

**3-1803767-5-K**

Descripción

**CRIMPER CONDUCTO**



No. Tooling Manufacturing

**120-3-2391967-0-  
KYUNGSHIN**

No. Parte Original

**3-2391967-0-  
KYUNGSHIN**

Descripción

**ANVIL COMBINATION**





No. Tooling Manufacturing No. Parte Original

**120-1-456402-7-  
KYUNGSHIN**

**1-456402-7-  
KYUNGSHIN**

Descripción

**CRIMPER CONDUCTOR**

No. Tooling Manufacturing No. Parte Original

**120-BOZWANG  
QX1228-R=0 3.0T** **BOZWANG  
QX1228-R=0 3.0T**



Descripción

**NAVAJAS BOZWANG (SET 5 PCS)**



No. Tooling Manufacturing No. Parte Original

**120-6-1490019-2-T** **6-1490019-2-T**

Descripción

**(2409) CONDUCTOR CRIMPER**

No. Tooling Manufacturing No. Parte Original

**120-6-1490019-2-  
KYUNGSHIN** **6-1490019-2-  
KYUNGSHIN**



Descripción

**CONDUCTOR CRIMPER**



No. Tooling Manufacturing No. Parte Original

**120-6-1633928-1-AR** **6-1633928-1-AR**

Descripción

**ANVIL COMBINATION**



No. Tooling Manufacturing  
**120- 4E0032-KYUNGSHIN**  
**TERM.K03006135**

No. Parte Original  
**4E0032-KYUNGSHIN**  
**TERM.K03006135**

Descripción  
**CRIMPER CONDUCTOR**

No. Tooling Manufacturing  
**120- 456407-5-M**

No. Parte Original  
**456407-5-M**



Descripción  
**CONDUCTOR CRIMPER**



No. Tooling Manufacturing  
**120- 1333206-1-CT**

No. Parte Original  
**1333206-1-CT**

Descripción  
**COMBINATION ANVIL**

No. Tooling Manufacturing  
**120- 6K0071-REV.A**

No. Parte Original  
**6K0071-REV.A**



Descripción  
**E8420 MOP CRIMPER**  
**INSULATION**



No. Tooling Manufacturing  
**120- 7K0070-REV.A**

No. Parte Original  
**7K0070-REV.A**

Descripción  
**MOP. ANVIL INSULATION**



No. Tooling Manufacturing

**120- 2-1803482-4-E**

No. Parte Original

**2-1803482-4-E**

Descripción

**CRIMPER CONDUCTOR**

No. Tooling Manufacturing

**120-5-1803248-7-E**

No. Parte Original

**5-1803248-7-E**

Descripción

**CRIMPER INSULATION**



No. Tooling Manufacturing

**120-2-1803512-2-**

**KYUNGSHIN**

No. Parte Original

**2-1803512-2-**

**KYUNGSHIN**

Descripción

**ANVIL COMBINATION**

No. Tooling Manufacturing

**120- 2-1803512-2**

No. Parte Original

**2-1803512-2**

Descripción

**ANVIL COMBINATION**



No. Tooling Manufacturing

**n/a**

No. Parte Original

**n/a**

Descripción

**n/a**